

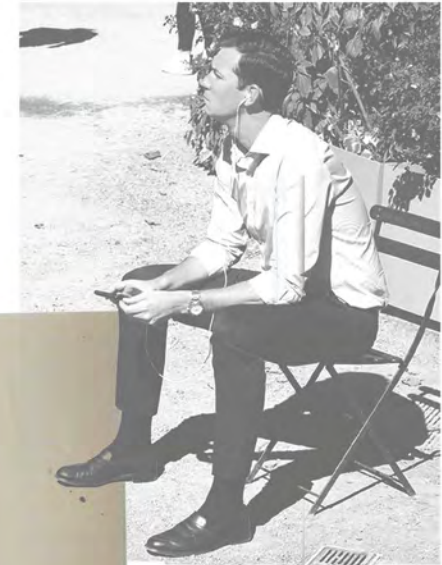
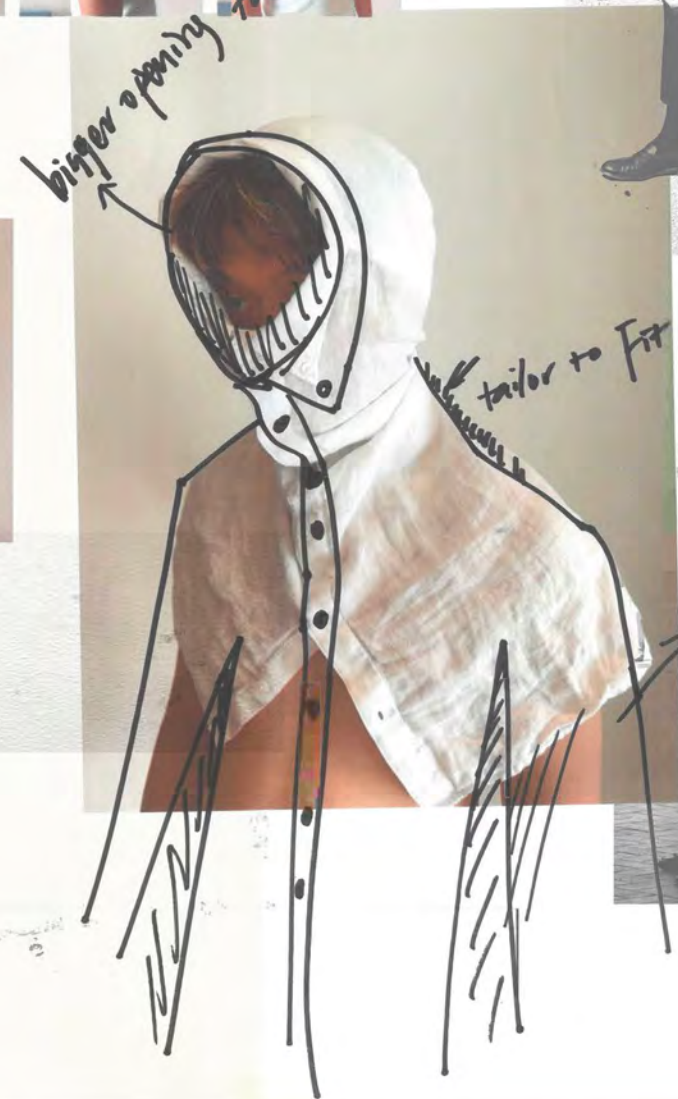
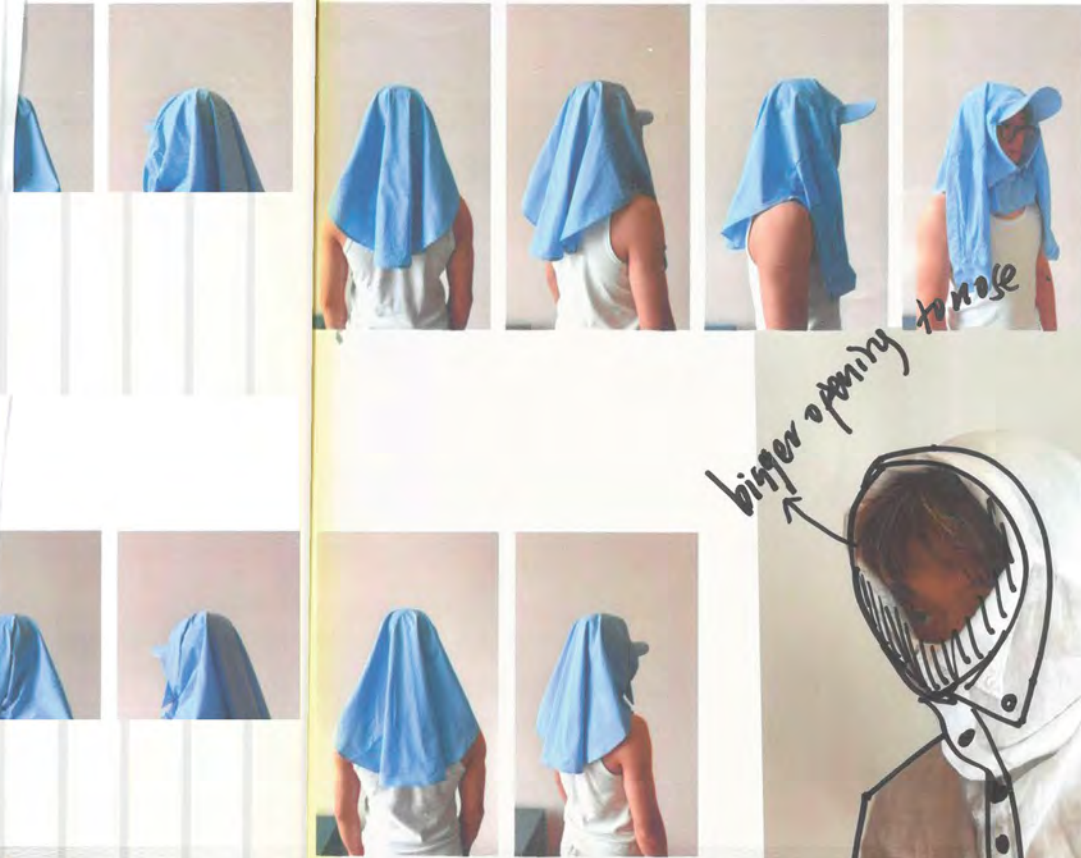




"Capitalist Veil"



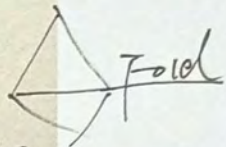
Dressed into Compliance:





Fitting 1



gilette 

sleeve + 15cm  
+ shirt cuff  
(lining)

leather belt 180cm  
+ belt wop

remove



*Dressed into Compliance:*



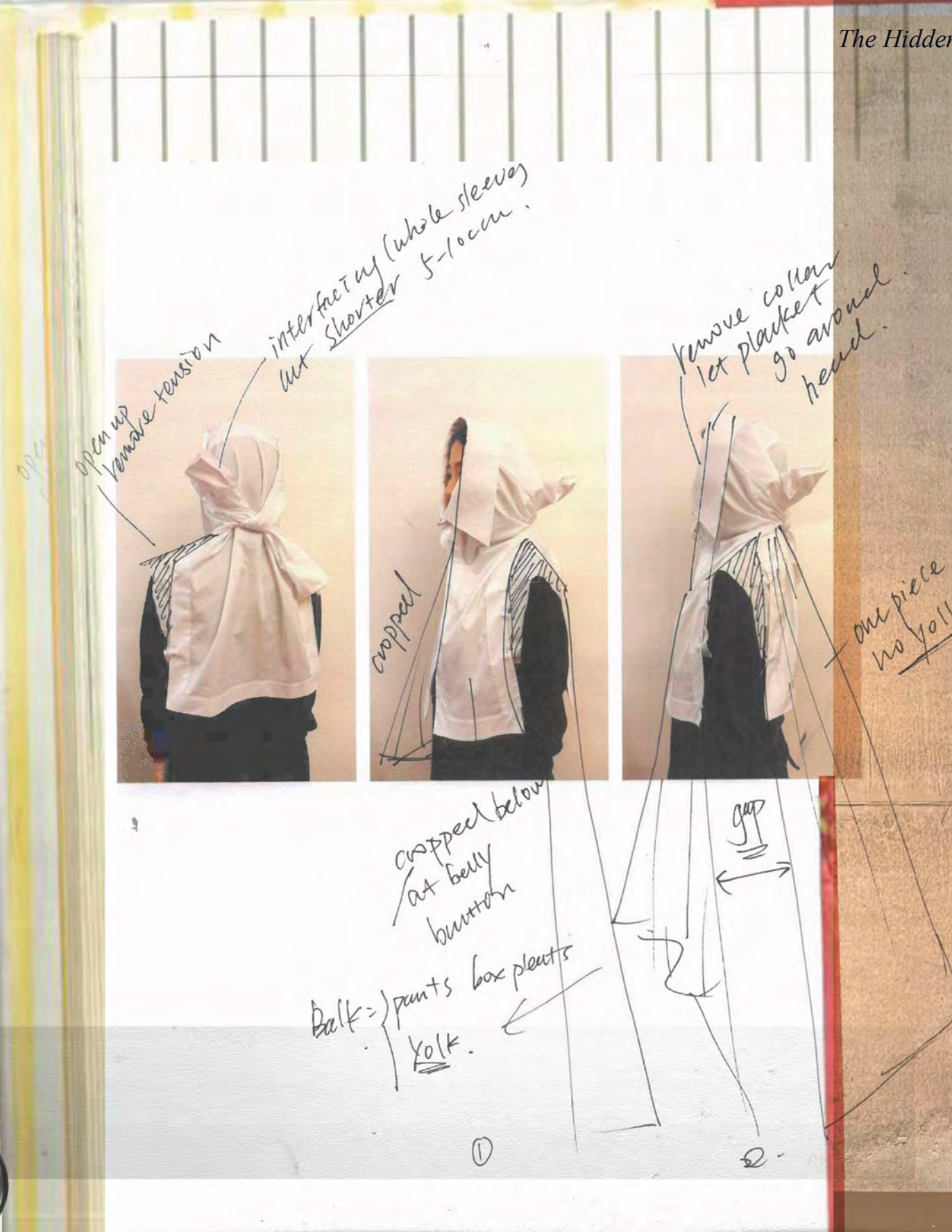
*shaping*

*Double pockets*

- 1. go all way through*
- 2. real pocket.*

*The Hidden Violence in Systems of Power Through Fashion*





Dressed into Compliance:



Bea Sherman  
placket

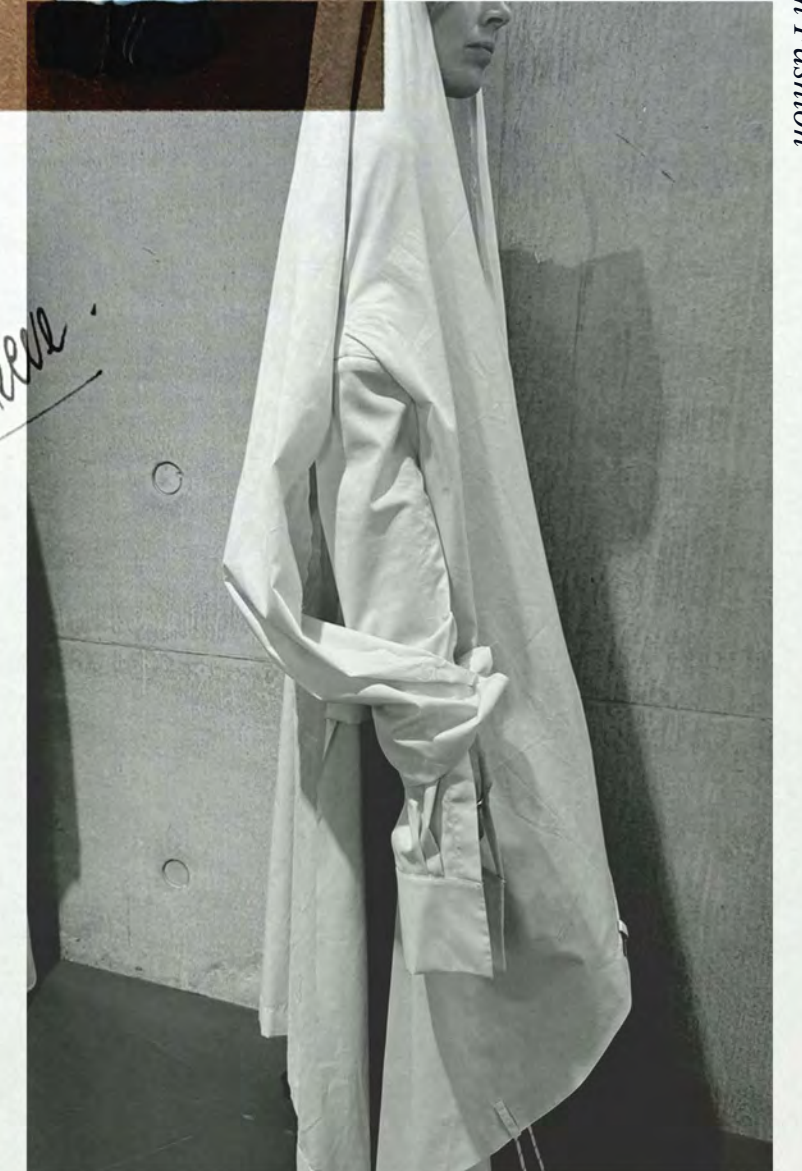
Deeper pocket  
on front



Slashed  
pen



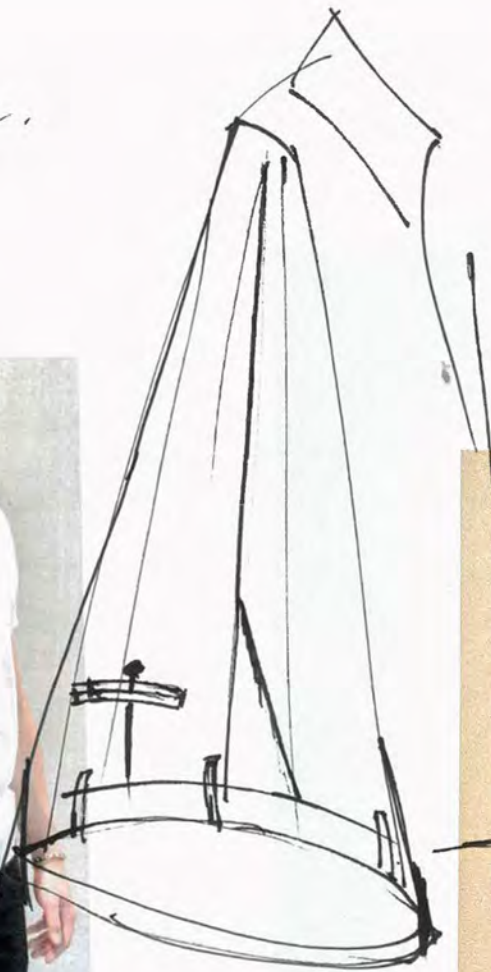
make a real sleeve



The Hidden Violence in Systems of Power Through Fashion

REPOSITION  
Tailored pant leg into a sleeve.

Fitted on shoulder  
Wider, shorter



1. Sample  
Trousers leg sleeve

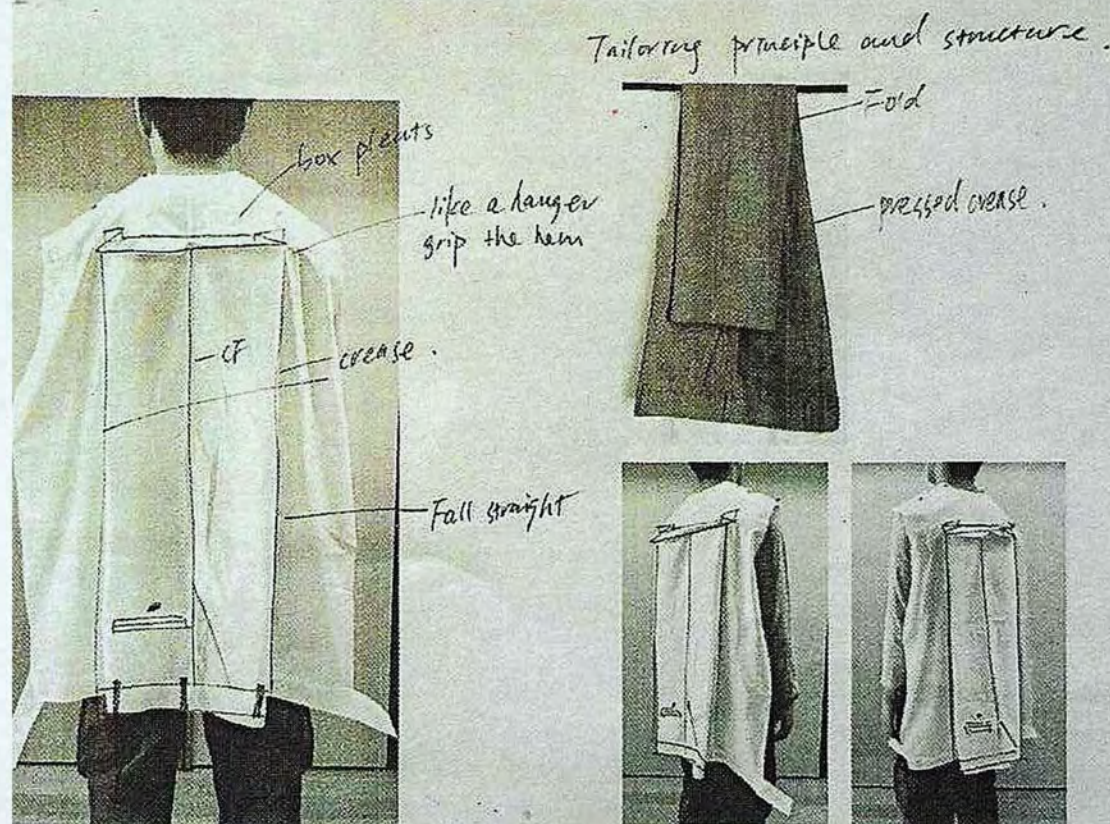


Fitting out or adjust to



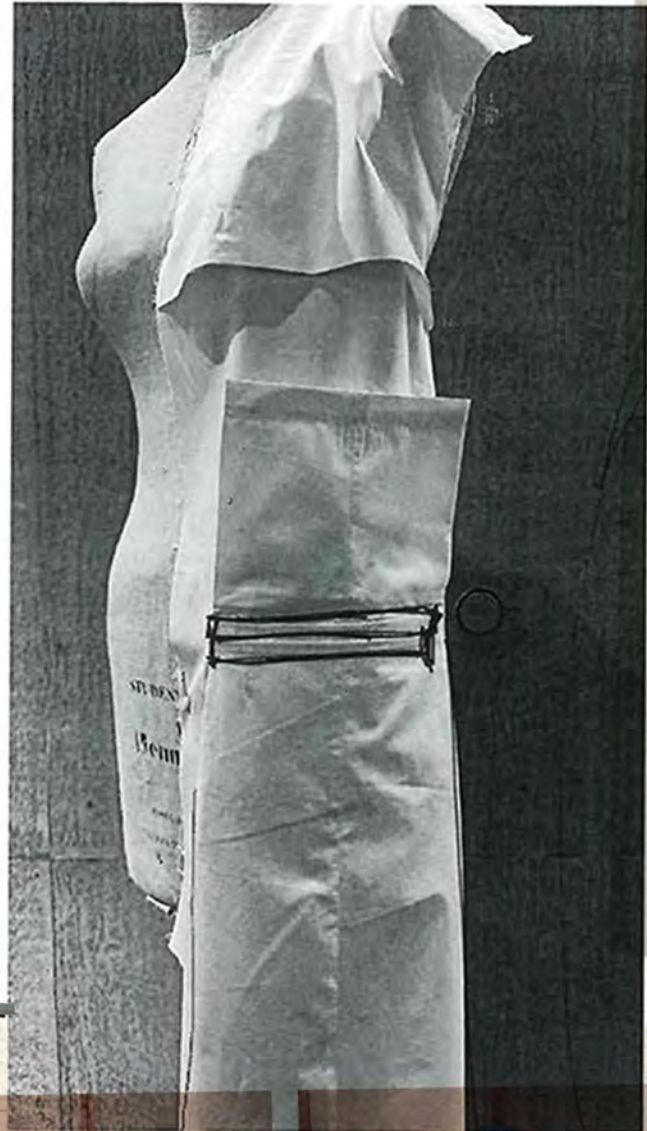
Trouser leg hanging  
on a jacket

Dressed into Compliance:



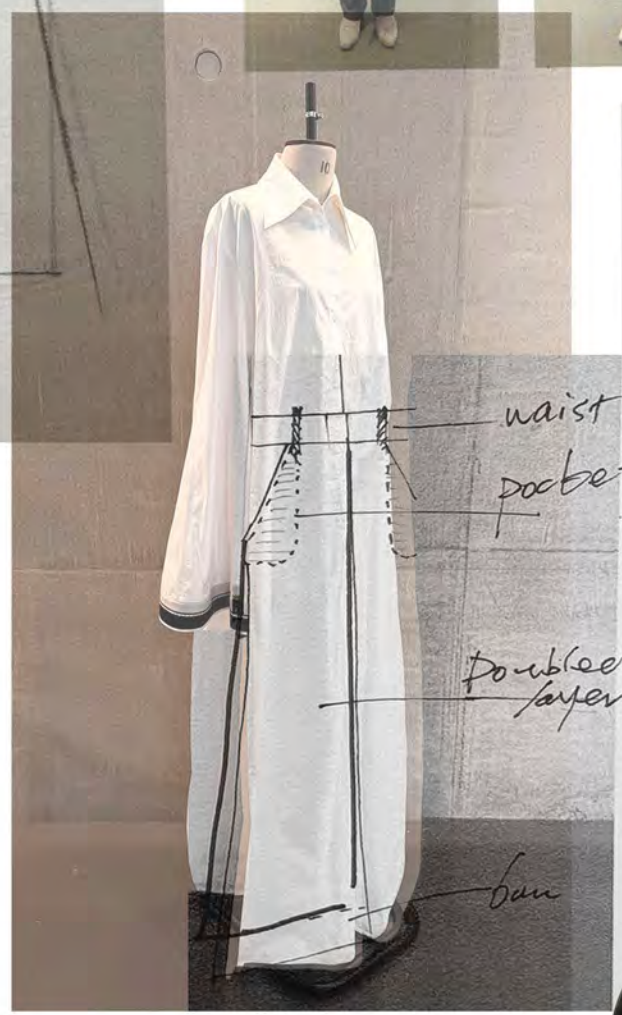
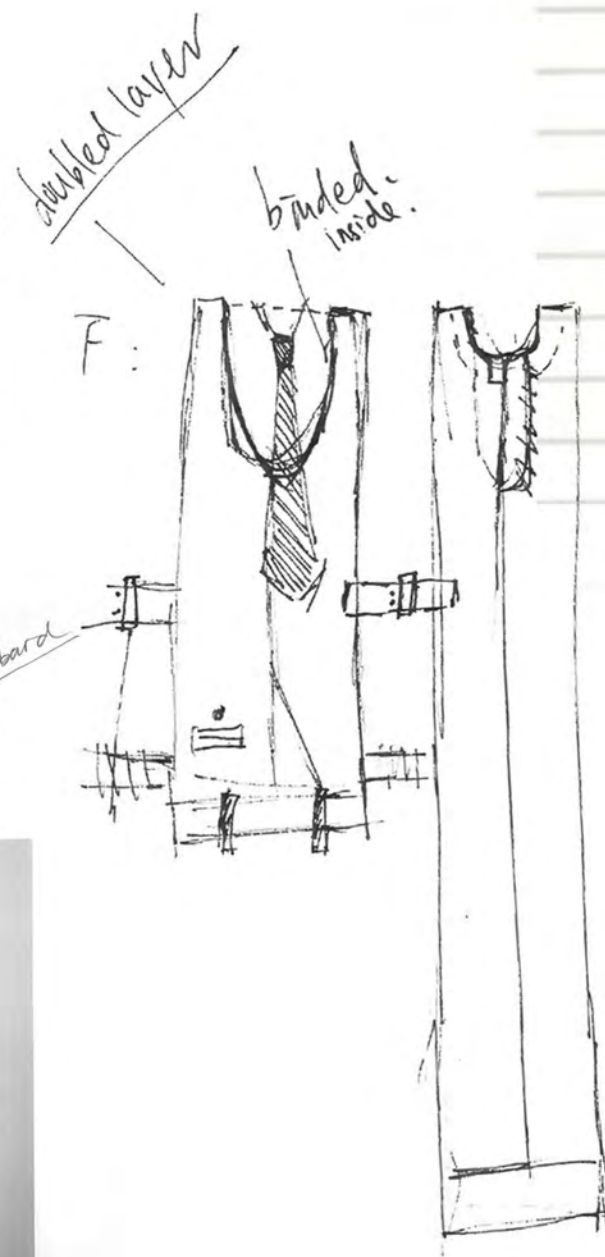


attach on with jespocket



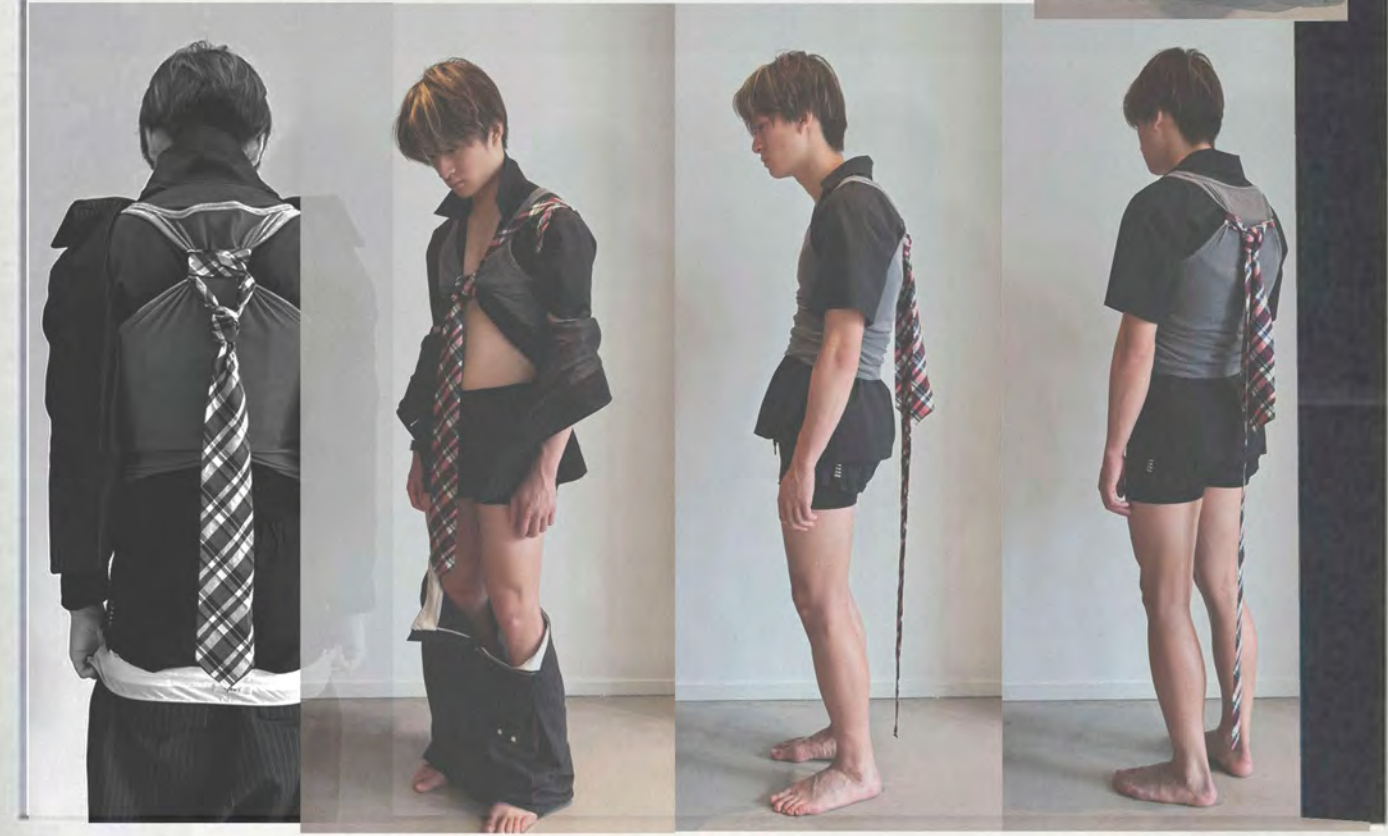
trouser leg pocket





Compression  
Restriction  
structural pull

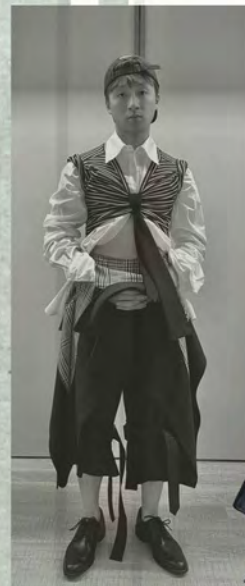
shape remain consistent through styling shift  
Same idea of form / tension



Dressed into Compliance:



shaebleed





2 long jacket  
1 trousers

1 knits top  
1 Tie  
1 Trousers

1 long shirt  
1 Cap  
1 Tie  
1 tabard.

1 Trenchcoat  
1 shirt  
1 scarf  
1 Trousers

1 shirt + cap  
1 Trousers

1 shirt  
1 Jacket  
1 suit  
1 trousers





Look 1



*Dressed into Compliance:*



*The Hidden Violence in Systems of Power Through Fashion*

Look 2

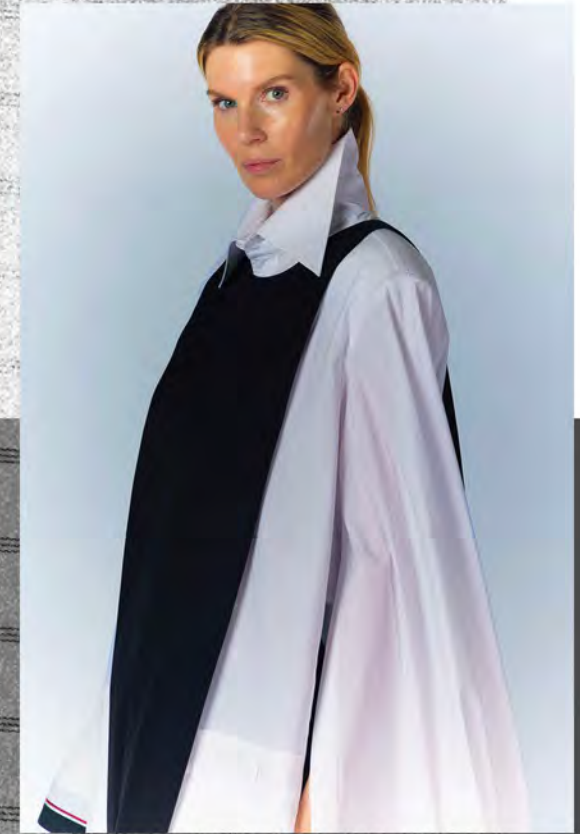
*Dressed into Compliance:*



*The Hidden Violence in Systems of Power Through Fashion*



*Look 3*



*The Hidden Violence in Systems of Power Through Fashion*

*Dressed into Compliance:*

*Look 4*



*The Hidden Violence in Systems of Power Through Fashion*

Look 5

*Dressed into Compliance:*

*The Hidden Violence in Systems of Power Through Fashion*



Look 6

*The Hidden Violence in Systems of Power Through Fashion*



*Dressed into Compliance.*

