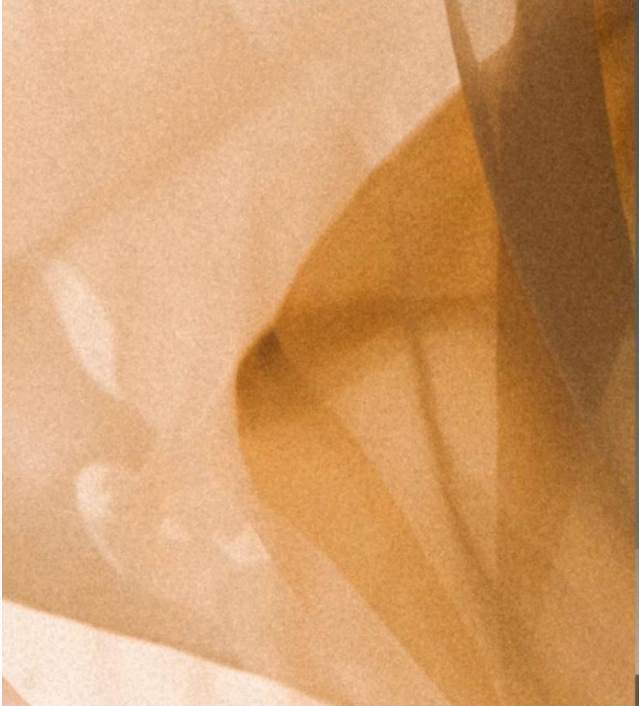




**Transformable Garments: Rethinking Fashion Through
Nomadic Design**

Yining Sun







INTRODUCTION

Ultimately, this project aims to explore how nomadic adaptability can inspire transformable garments. Specifically, it will examine consumer preferences for multifunctional sustainable garments, decipher nomadic design principles and translate them into a contemporary fashion language, whilst realising transformable garments through creative pattern cutting techniques and appropriate garment technologies. The objectives below outline how I will achieve the overarching aims of the project (Table 1).

Theme	OBJECTIVES
Consumer Psychology and Market Demand	To examine consumer preferences and market demand for transformable garments, focusing on emotional longevity and sustainable fashion values.
Emotional Longevity in Fashion	To explore how transformable garments can foster emotional attachment and prolonged use through versatile design and personal meaning.
Study of Nomadic Garments	To analyze the design principles, construction methods, and adaptive features of nomadic garments, identifying key elements that can inform contemporary design.
Creative Pattern Cutting and 3D Transformation	To investigate how creative pattern cutting techniques can be applied to develop garments offering multiple styling and functional options.
Technical Development	To develop and test construction techniques, such as drawstrings, ties, buttons, and modular systems, to achieve multifunctional and transformable garment designs.

Table1: Project Objectives.(Yining,2025)

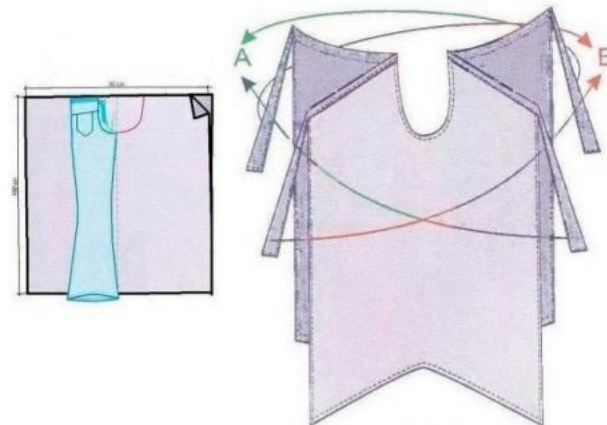
PROJECT DEVELOPMENT

LOOK1

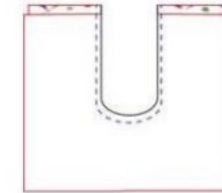
This LOOK1 builds on structural concepts developed in my previous TAD project, where from “Bola skirt” pattern was explored to enable transformation between skirt and trouser configurations through adjustable connection (see Appendix 4).

In the subsequent structural development, the gusset was removed and replaced with a semi-circular insert based on pattern research(fig19). Analysis revealed a geometric similarity between the trouser rise curve and the bodice armhole curve.

This led to the formulation of a design hypothesis: it might be possible to remove the traditional gusset and instead use a single semi-circular cut-out that could simultaneously accommodate both the trouser rise and the bodice armhole.



4. Déplier et coudre le long du "U" sur les deux rectangles en même temps



5. Ouvrir et faire les ourlets sur tous les bords (faites l'ourlet de bas en dernier, apres avoir décidé de la longueur). Je suggere un petit roulé de 1cm sur les côtés et 3-4cm à la taille et en bas.



6. Ajouter les bandes d'attache (ou du scratch) sur les 4 côtés. Enfiler le pantalon, mesurer la hauteur et faire l'ourlet. C'est tout!



*Pour enfiler avec le "U" entre les jambes, attacher le devant ou le dos autour de la taille, tirer l'autre partie par entre les jambes et l'attacher autour de la taille. Les deux côtés sont interchangeables.

Fig19 diagram Yining.S 2025

PROJECT DEVELOPMENT

LOOK1

To test this, a series of draping experiments were carried out. A piece of calico was prepared with a length corresponding to trouser length and a width matching the full fabric width. A semi-circular opening of approximately 15 × 30 cm was cut out at the centre to serve as the structural basis for the lower-body rise(fig20).

Using this as a foundation, different silhouettes were explored on the stand. In one variation, the semi-circular opening was positioned at the crotch and the remaining fabric was wrapped around the waist and allowed to fall naturally, creating a relaxed, straight-leg effect. In another, the fabric at the waist was gathered to create volume, resulting in a wide-leg trouser silhouette with a more dramatic proportion(fig21).

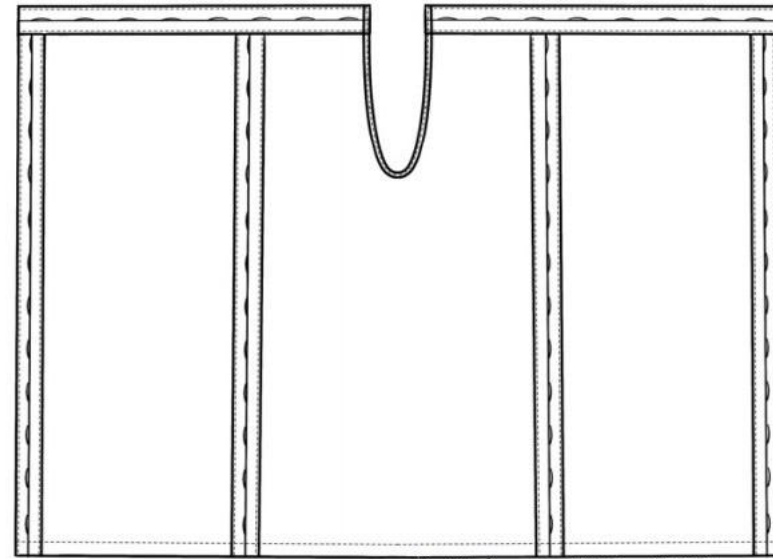


Fig20 diagram Yining.S 2025



Fig21 look1 toile Yining.S 2025

PROJECT DEVELOPMENT

LOOK1

The same semi-circular void was then repositioned to the upper body, where it was tested as an armhole connection. By altering the attachment points and the way the fabric was wrapped or suspended, the original trouser-based structure could be transformed into several skirt-like forms. (fig22)

Throughout this process, garment construction methods were a key focus. Techniques such as drawstrings and string weaving were tested along the fabric edges to create adjustable connections that enable transformation between different styles. At the same time, the experiments evaluated the wearability and practicality of these transformations, ensuring that adaptability in structure could coexist with comfort and functional use in everyday contexts.



Fig22 look1 toile Yining.S 2025



PROJECT DEVELOPMENT

LOOK1

Ultimately, two trouser variants are retained to meet the requirement of easy user conversion. Blanket-stitch channels are integrated along the waistband and side panels to serve as both button attachment points and cord passages, enabling quick switching between configurations. A “2+2” blanket-stitch repeat is specified across the waistband to stabilise the edge and provide evenly spaced anchor points for fastening and lacing. To improve comfort and conformity to the body, a softer fabric is selected for the main garment.

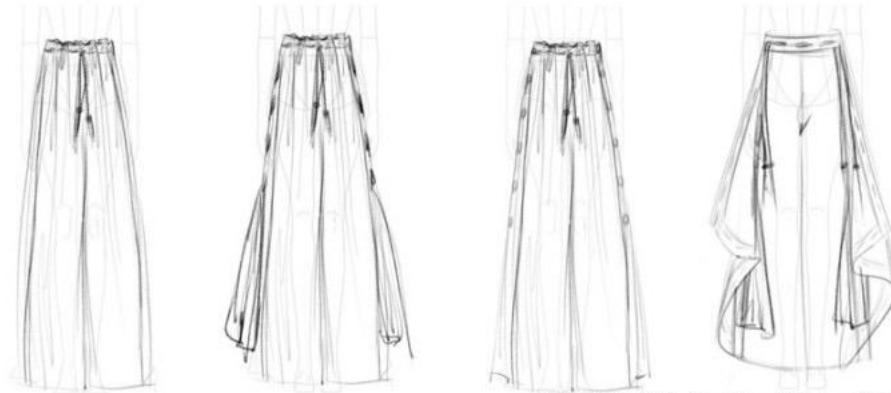


Fig23 look1 sketches Yining.S 2025



Fig24 look1 final garment Yining.S 2025
030

PROJECT DEVELOPMENT

LOOK2

Extending from Look 1 principle(fig25), by removing the semi-circular structure and extending this concept, to explore whether this semi-circular form could be applied to the upper body's sleeve cap to create a top(fig25). This leads to the idea of using a rectangular piece of fabric to form a gathered structure at the upper front and back panels, resulting in a halterneck top.

Based on this, a hypothesis was proposed: to create the two armholes by removing two semi-circular cut-outs. Through draping(fig26), led to the adoption of a halterneck top, rendering the two semi-circles unnecessary.



Fig26 toile Yining.S 2025

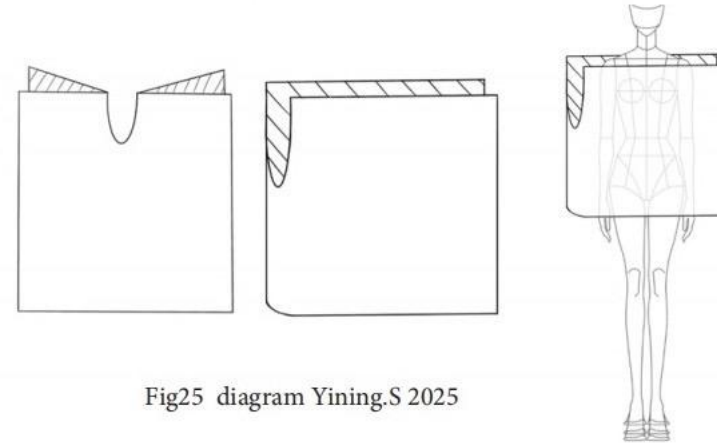
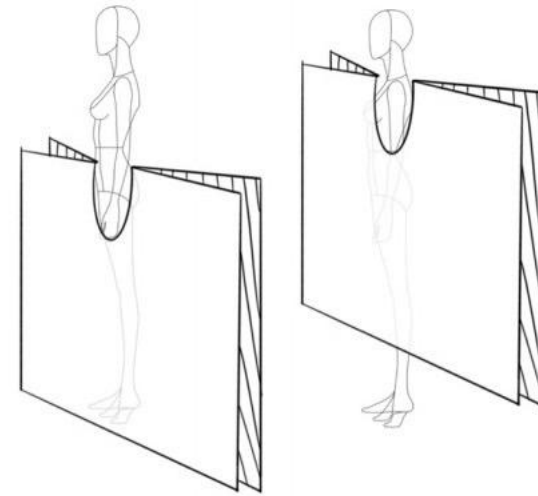


Fig25 diagram Yining.S 2025

PROJECT DEVELOPMENT

LOOK2

Based on this, a hypothesis was proposed: to create the two armholes by removing two semi-circular cut-outs. Through draping, led to the adoption of a halter-neck top, rendering the two semi-circles unnecessary. Drawing on geometric elements extracted from nomadic dress, the design employs collage combinations and the inherent looseness of heavier fabric to form relaxed silhouettes, thereby advancing a minimal-waste cutting strategy. (fig27)

Building on this principle, the lower section was developed through piece construction to increase volume while retaining pattern clarity. Referencing the base rectangle pattern, square panels were cut and collaged to generate the required fullness and silhouette.

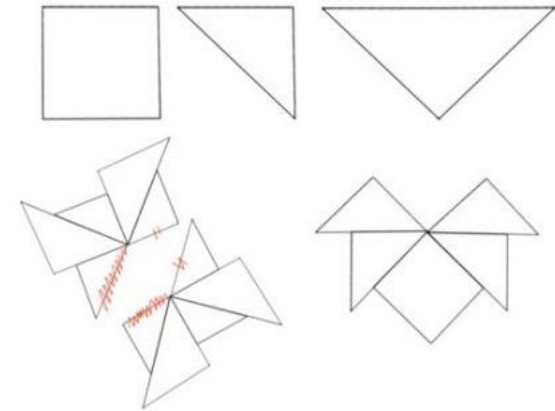
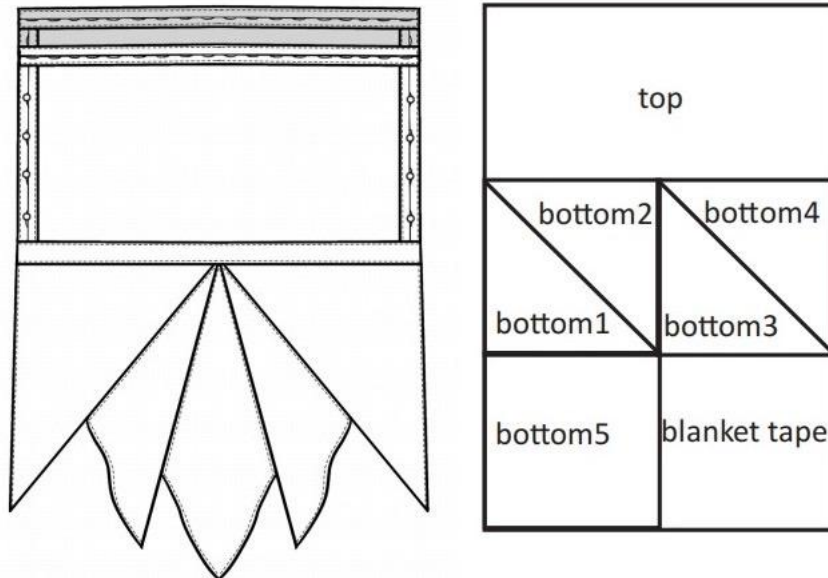
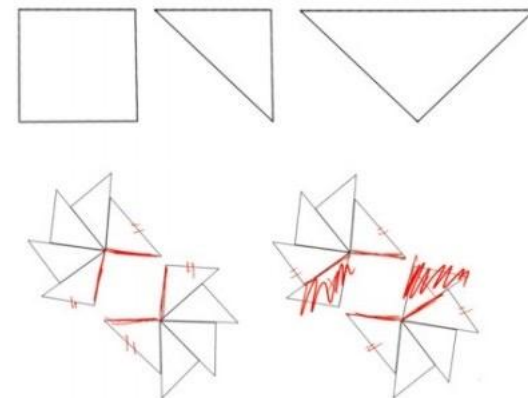


Fig27 diagram Yining.S 2025



PROJECT DEVELOPMENT

LOOK2

For the final garments, lightweight fabrics were selected, and raw-edge finishes were applied to the hems to echo the decorative spontaneity found in nomadic dress. The halter-neck top was retained (fig28), with a blanket-stitched channel at the waist to accommodate a robe belt. Building on this, a second variation adds blanket-stitched edging around the arm-pass opening with buttoned connections, while the waist is closed with a cord tie to create a secure pouch-like compartment suitable for carrying small items.



Fig28 Yining.S 2025

PROJECT DEVELOPMENT

LOOK3

Drawing from the structural logic of monastic nomadic garments (fig29), this experiment proposed a hypothesis: whether the neckline area of an upper garment could be reinterpreted as the waistband of a pair of trousers. Initially, the two sleeves were considered as potential trouser legs and tested through draping on the stand. A raglan-sleeve top was drafted, with additional space reserved in the body pattern for a gusset, and its behaviour was evaluated in three-dimensional form.

However, the first toile showed that directly converting the full upper garment into trousers resulted in excessive fabric volume between the legs, making the structure impractical.

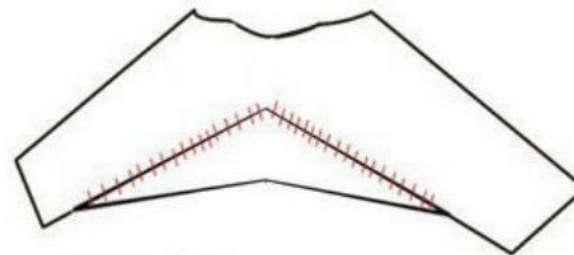


Fig29 Yining.S 2025



PROJECT DEVELOPMENT

LOOK3

In response, the design was adjusted so that one sleeve plus part of the body panel formed a trouser leg, allowing the piece to shift between a trouser-like and skirt-like silhouette.(fig30)

To support smoother movement and improve fit in the rise area during transformation, a gusset was added to the base of the sleeve. This iteration clarified the limitations of direct one-to-one conversion and suggested that partial structural borrowing, rather than complete inversion of form, is more effective for transformable garment development.

Because the top benefits from a collar while the trouser mode requires a clean, collar-less waist, the neckline is finished with evenly spaced button attachments for a removable collar module, allowing user-controlled styling with or without the collar.

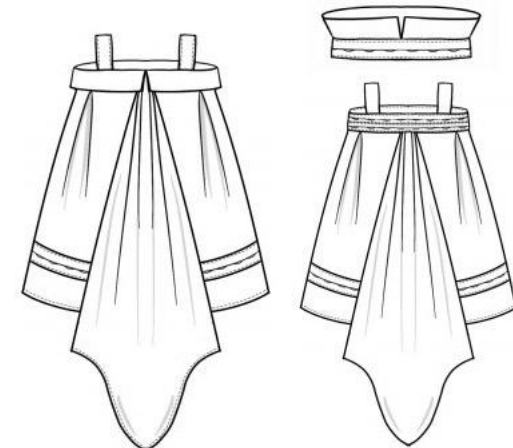
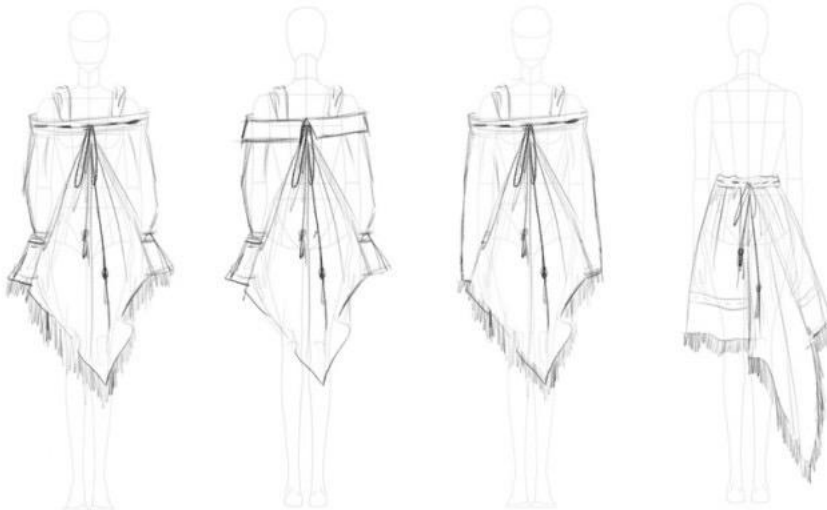
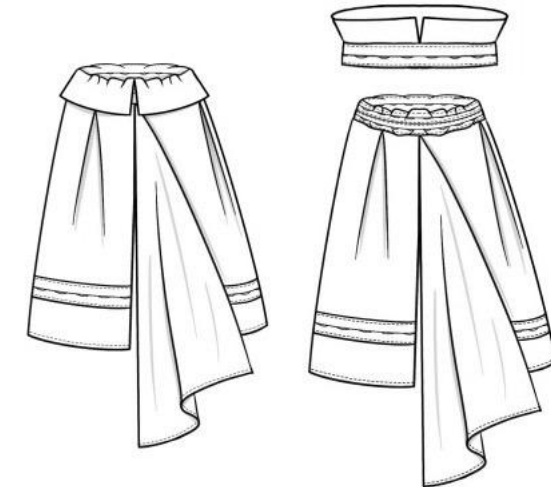


Fig30 Yining.S 2025



PROJECT DEVELOPMENT

LOOK3

In the final garments, a heavier-weight fabric was selected to retain silhouette integrity. Because excess drape accumulated at the waist, the belt treatment was upgraded from one to two blanket-stitched channels to stabilise and prevent sagging. Additionally, hem trimming was introduced to echo the edge ornamentation characteristic of nomadic dress.



Fig31 Yining.S 2025



PROJECT DEVELOPMENT

LOOK4

Informed by Tibetan pattern logic(fig32), this look tested a hypothesis: whether the front placket opening could be relocated to the waist so that one structure produces both a jacket and a skirt. The upper and lower sections were merged; the lower part of pattern was cut with a curved placket void that functions as the jacket opening while also wrapping at the waist to form a naturally draped skirt silhouette.

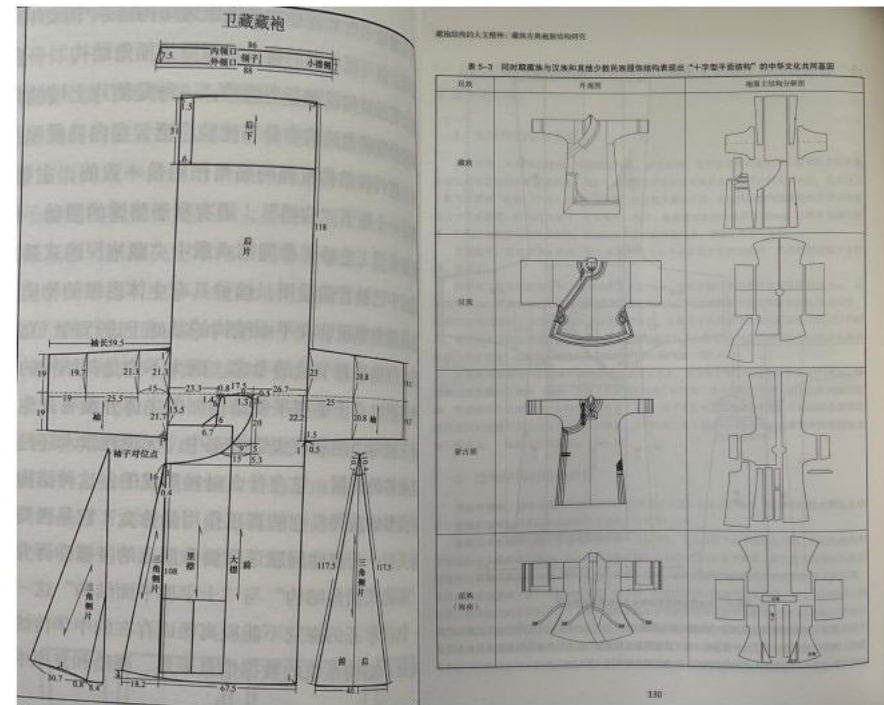


Fig32 Yining.S 2025

PROJECT DEVELOPMENT

LOOK4

Consequently, the skirt length is determined by the shoulder measurement of the jacket. Draping on the mannequin revealed that the shoulder span is shorter than the minimum skirt length required; therefore, the shoulder area was structured with multi-layer folding to add length through controlled folds, enabling one piece to satisfy both shoulder coverage and skirt length.

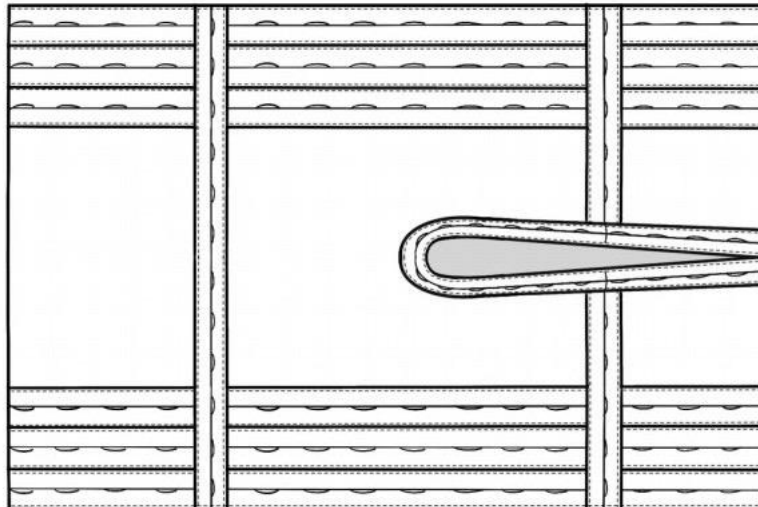


Fig33 Yining.S 2025



PROJECT DEVELOPMENT

LOOK4

To accommodate sleeves without compromising the transformable logic, a button-on modular system was adopted, referencing the rectangular sleeve block found in Tibetan dress. Sleeves can be attached to form a long-sleeve jacket, detached to create a vest configuration, or reapplied across looks as interchangeable components. Furthermore, the sleeves featured in Look 4 may also be utilised as sleeves for Look 2.




PROJECT DEVELOPMENT

LOOK4

In the final garments, the body and sleeves use different fabrics, allowing the sleeves to function interchangeably across Look 2 and Look 4. The hem detailing mirrors Look 3 with added trimming. Along the body side seam, cords are routed through blanket-stitched channels for connection. However, once laced, the side bulk becomes excessive and affects comfort. This should be addressed in the next iteration, either by redesigning the join or switching to a lighter fabric at the side treatment. Sleeve attachment is achieved via buttons to blanket-stitched edges, the sleeve weight does cause some body drag, which improves when worn on the body but still warrants monitoring. For the skirt transformation, the waistline is treated analogously to the collar and fitted with buttons so the skirt can be assembled through a buttoned connection.



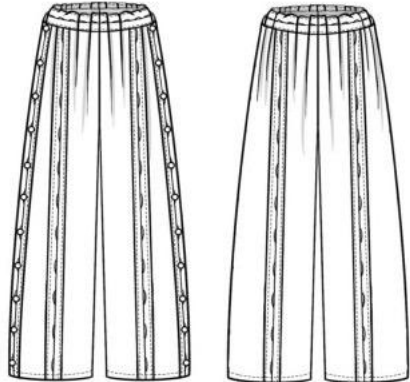
TECH PACK



Specification Sheet


ual: london college of fashion

Name: Yinying Sun	Brand: Yinying	Style No. 1 trouser
Block Reference: Look 1 Trouser	Base Size: 12	Date: 30/11/2025



Fabric	Thread			Trim				
Woven	Stretch	Lace	4 Thread	5 Thread	Pin Stitch	Buttons	Zip	Elastic
Lease	Contrast	Fusing	Coverstitch	Baby Lock	Felling	Hook + Bar	Hook + eye	Frangation
Other								
Hanging loops			Embroidery		Special Trims			

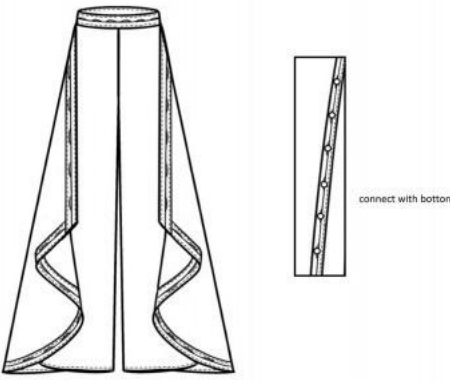
Fabric Samples:



Specification Sheet


ual: london college of fashion

Name: Yinying Sun	Brand: Yinying	Style No. 1 trouser
Block Reference: Look 1 Trouser	Base Size: 12	Date: 30/11/2025



Fabric	Thread			Trim				
Woven	Stretch	Lace	4 Thread	5 Thread	Pin Stitch	Buttons	Zip	Elastic
Lease	Contrast	Fusing	Coverstitch	Baby Lock	Felling	Hook + Bar	Hook + eye	Frangation
Other								
Hanging loops			Embroidery		Special Trims			

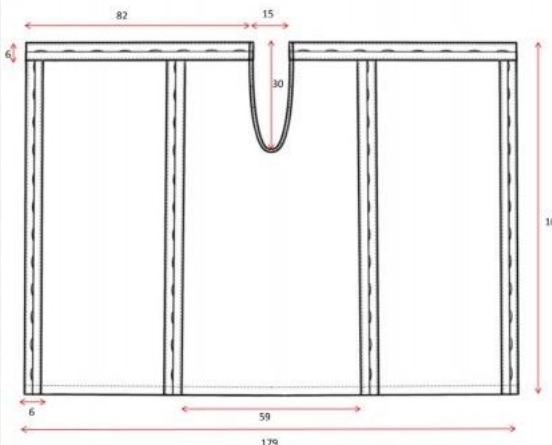
Fabric Samples:



Specification Sheet

ual: london college of fashion


Name: Yinying Sun	Brand: Yinying	Style No. 1 trouser
Block Reference: Look 1 Trouser	Base Size: 12	Date: 30/11/2025



Fabric	Thread			Trim				
Woven	Stretch	Lace	4 Thread	5 Thread	Pin Stitch	Buttons	Zip	Elastic
Lease	Contrast	Fusing	Coverstitch	Baby Lock	Felling	Hook + Bar	Hook + eye	Frangation
Other								
Hanging loops			Embroidery		Special Trims			

Fabric Samples:

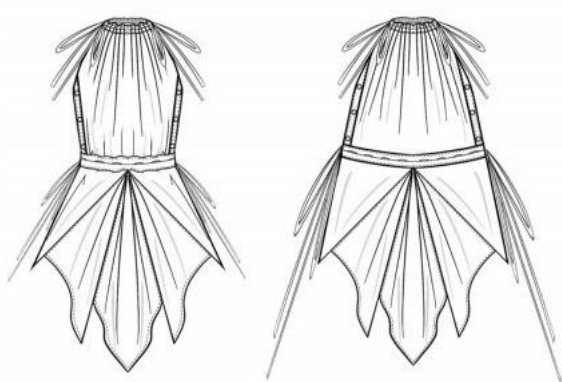
TECH PACK



ual london college
of fashion


Specification Sheet


Name: YinyingSun	Brand: Yinying	Style No.2 Top
Block Reference: Look2 Top	Base Size: 12	Date: 30/11/2025



Fabric			Thread			Trim		
Woven	Stretch	Lace	4 Thread	5 Thread	Pin Stitch	Buttons	Zip	Elastic
Lining	Contrast	Fusing	Coverstitch	Baby Lock	Felling	Hook + Bar	Hook+ eye	Framation
Other								
Hanging looms			Embroidery			Special Trims		

Fabric Samples:

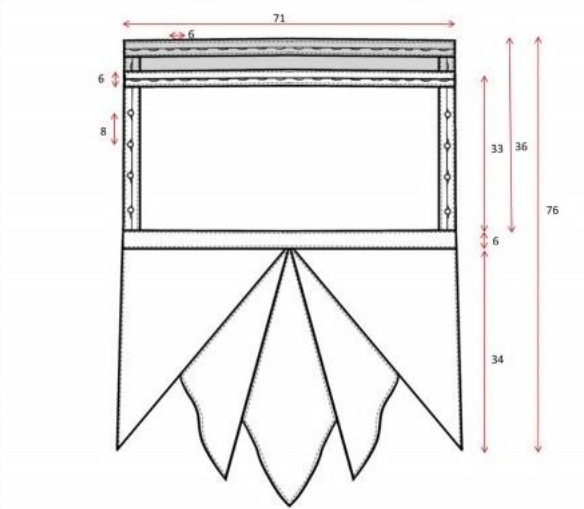




ual london college
of fashion

Specification Sheet


Name: YinyingSun	Brand: Yinying	Style No.2 Top
Block Reference: Look2 Top	Base Size: 12	Date: 30/11/2025



Fabric			Thread			Trim		
Woven	Stretch	Lace	4 Thread	5 Thread	Pin Stitch	Buttons	Zip	Elastic
Lining	Contrast	Fusing	Coverstitch	Baby Lock	Felling	Hook + Bar	Hook+ eye	Framation
Other								
Hanging looms			Embroidery			Special Trims		

Fabric Samples:

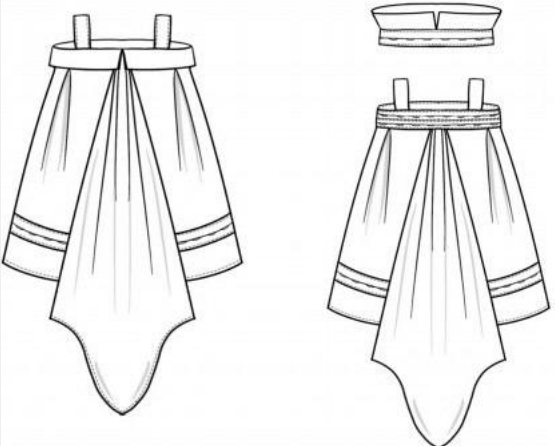
TECH PACK



ual: london college of fashion


Specification Sheet


Name: YiningSun		Brand: Yining		Style No.3 Dress	
Block Reference: Look3 Dress		Base Size: 12		Date: 30/11/2025	



Fabric			Thread			Trim		
Woven	Stretch	Lace	4 Thread	5 Thread	Pin Stitch	Buttons	Zip	Elastic
Lining	Contrast	Fusing	Coverstitch	Baby Lock	Felling	Hook + Bar	Hook + eye	Pranation
Other								
Hanging loops			Embroidery			Special Trims		

Fabric Samples:






ual: london college of fashion

Specification Sheet

Name: YiningSun		Brand: Yining		Style No.3 Dress	
Block Reference: Look3 Dress		Base Size: 12		Date: 30/11/2025	



Fabric			Thread			Trim		
Woven	Stretch	Lace	4 Thread	5 Thread	Pin Stitch	Buttons	Zip	Elastic
Lining	Contrast	Fusing	Coverstitch	Baby Lock	Felling	Hook + Bar	Hook + eye	Pranation
Other								
Hanging loops			Embroidery			Special Trims		

Fabric Samples:

TECH PACK



ual • london college
of fashion

Specification Sheet


Name: YivingSun	Brand: Yiving	Style No.4 Coat
Block Reference: Look4 Coat	Base Size: 12	Date: 30/11/2025



Fabric	Thread			Trim				
Woven	Stretch	Lace	4 Thread	5 Thread	Pin Stitch	Buttons	Zip	Elastic
Lining	Contrast	Fusing	Coverstitch	Baby Lock	Felling	Hook + Bar	Hook+ eye	Framekn
Other								
Hanging loops			Embroidery		Special Trims			

Fabric Samples:

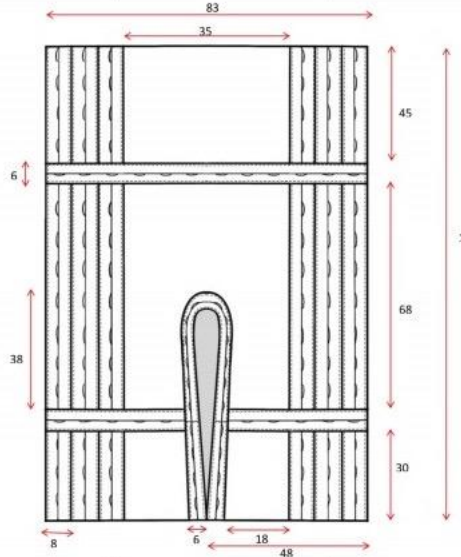




ual • london college
of fashion

Specification Sheet

Name: YivingSun	Brand: Yiving	Style No.4 Coat
Block Reference: Look4 Coat	Base Size: 12	Date: 30/11/2025



Fabric	Thread			Trim				
Woven	Stretch	Lace	4 Thread	5 Thread	Pin Stitch	Buttons	Zip	Elastic
Lining	Contrast	Fusing	Coverstitch	Baby Lock	Felling	Hook + Bar	Hook+ eye	Framekn
Other								
Hanging loops			Embroidery		Special Trims			

Fabric Samples: