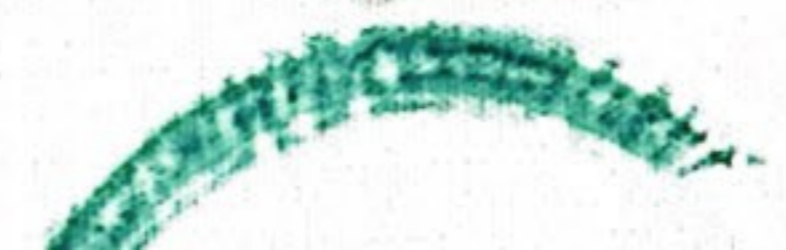
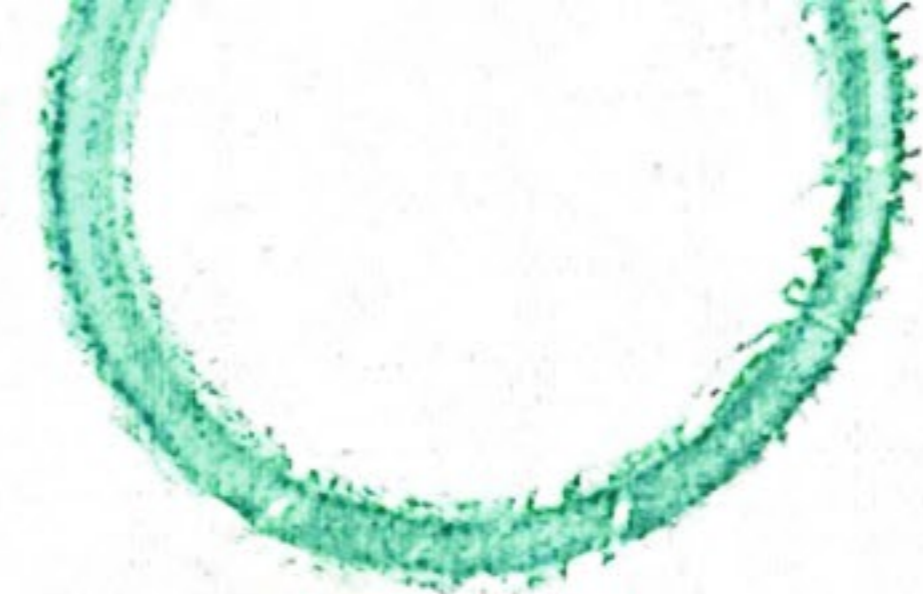


FORMS OF REMAINING
memory, time, trace



CONTENTS

Concept & Research Question

Archetypes

Body-Memory Details

Orbit Silhouette

Copper Experiments

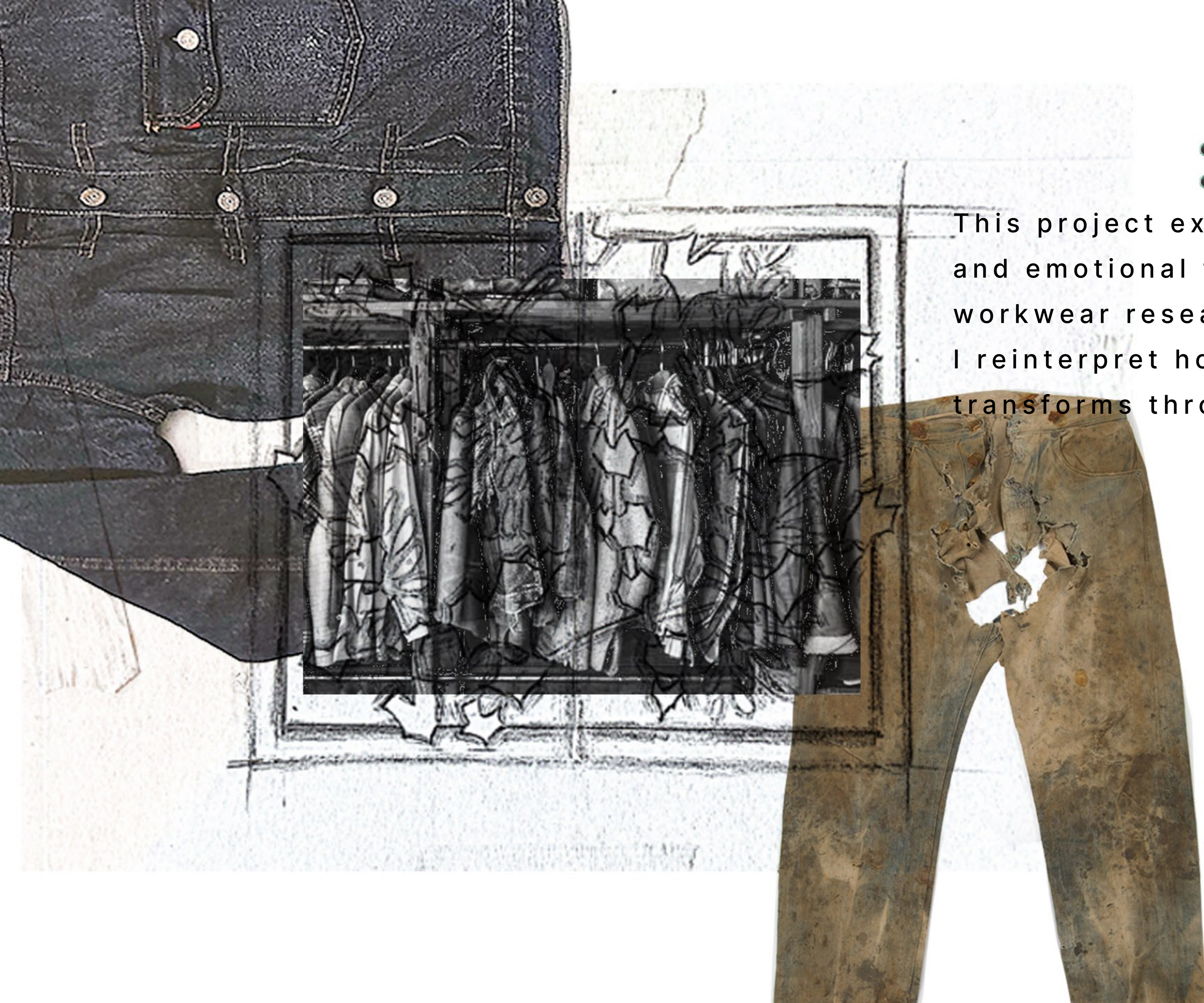
Oxidation Traces

Line-up

Range Plan

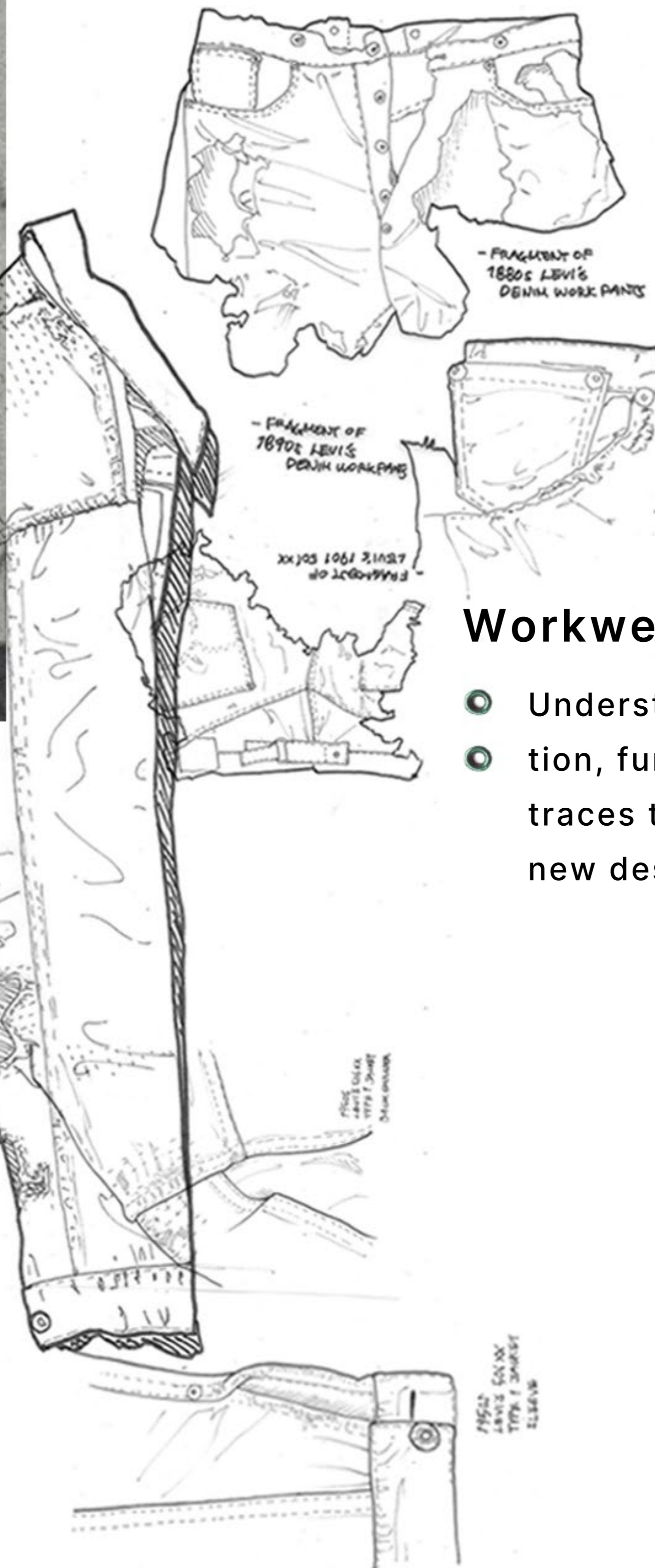
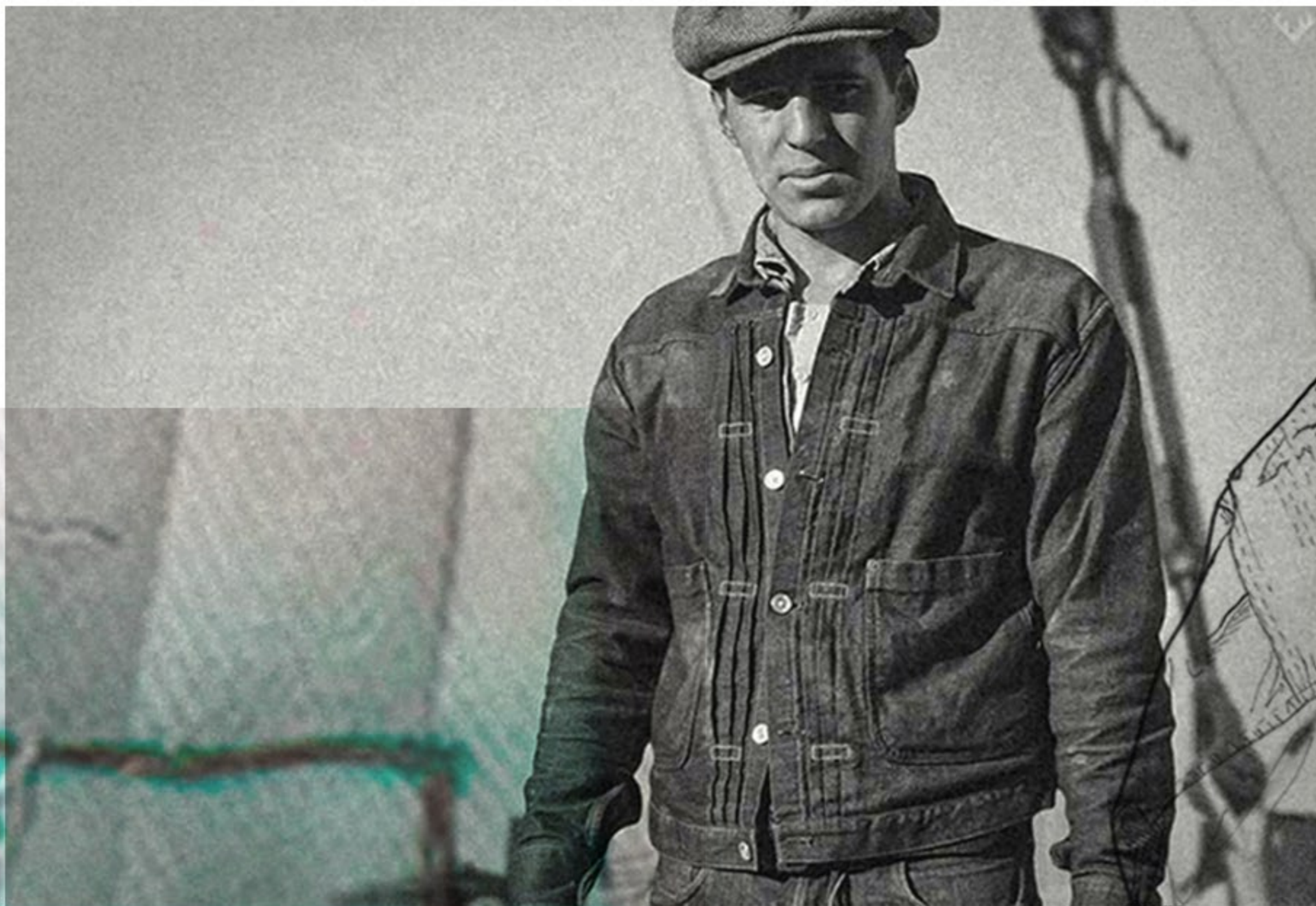
Final Look

References



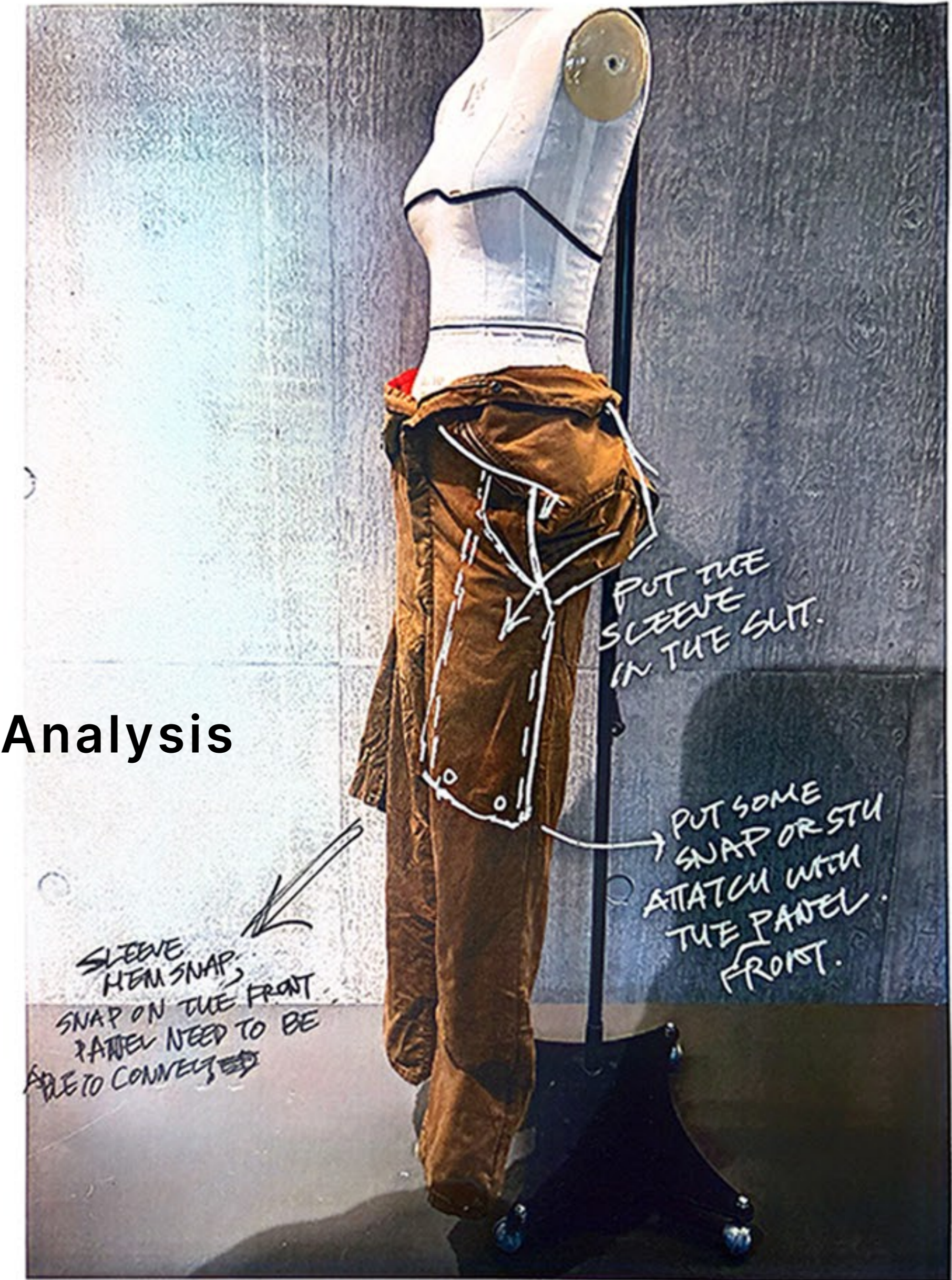
This project explores memory as a physical and emotional trace within garments. Through workwear research and material experiments, I reinterpret how clothing records time and transforms through use.

- What kinds of garments sustain or enhance personal memory and emotional connection?
- How can memory and emotion be translated into material elements such as fabric, structure, silhouette, and surface?
- Can garments embedded with personal memory evoke emotional responses or empathy in others?



Workwear Archetype Analysis

- Understanding construction, function, and wear traces that inform the new design direction.



Tracing the workwear archetype_ uncovering how function and time shape the foundational structure of garments.





Memory in Motion: The Cinch-Back System



Cinch-back adjustability is reimagined as a system for expressing memory's fluid and shifting nature.

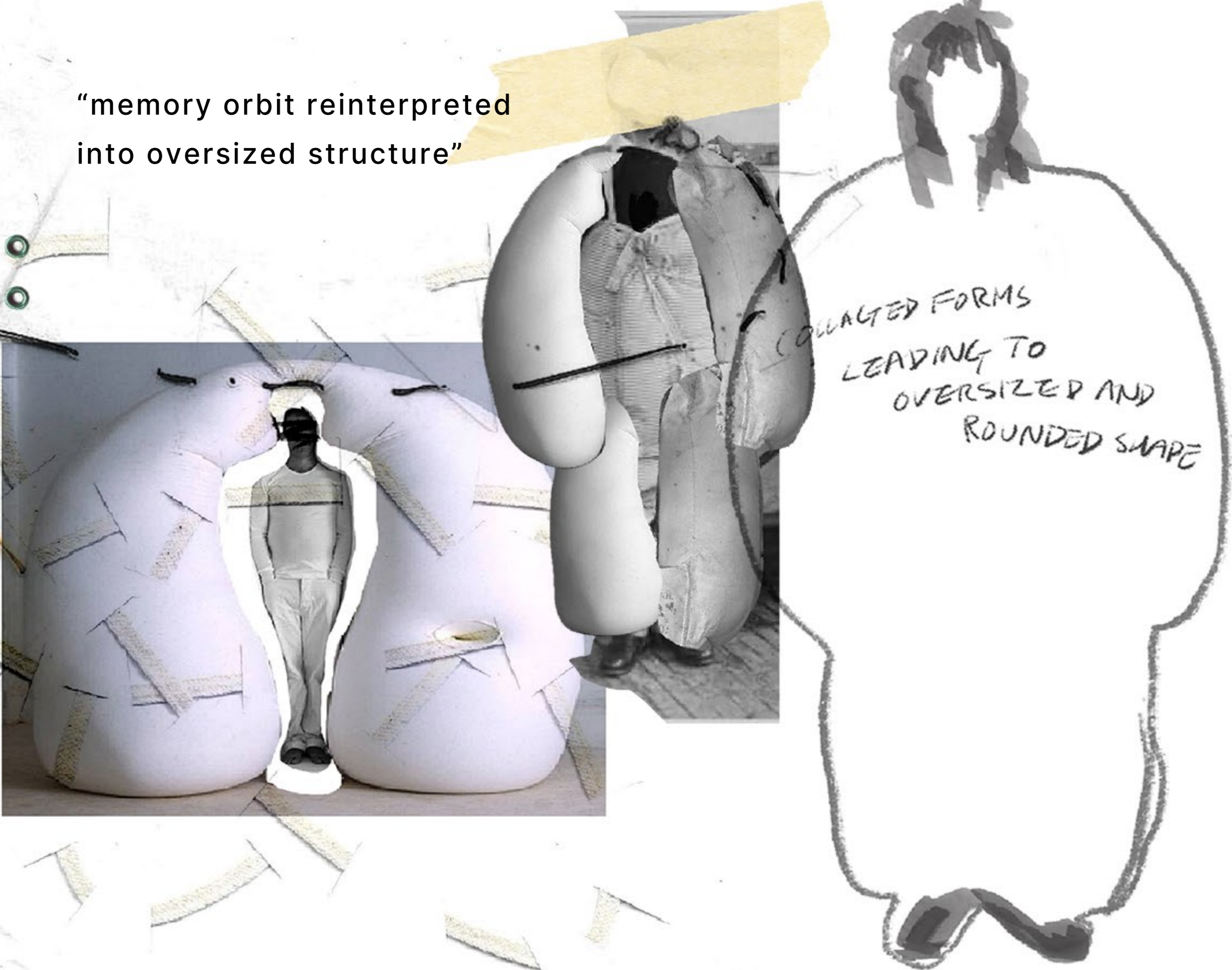
*"Tightening,
Loosening,
Transforming
through time"*



Body-Memory Spatial Collage

By visualizing the ambiguous space between body and memory, the collage reconstructs fragmented forms into a fluid, rounded structure. This organic mass served as a foundation for creating round shape and oversized silhouettes in the design.

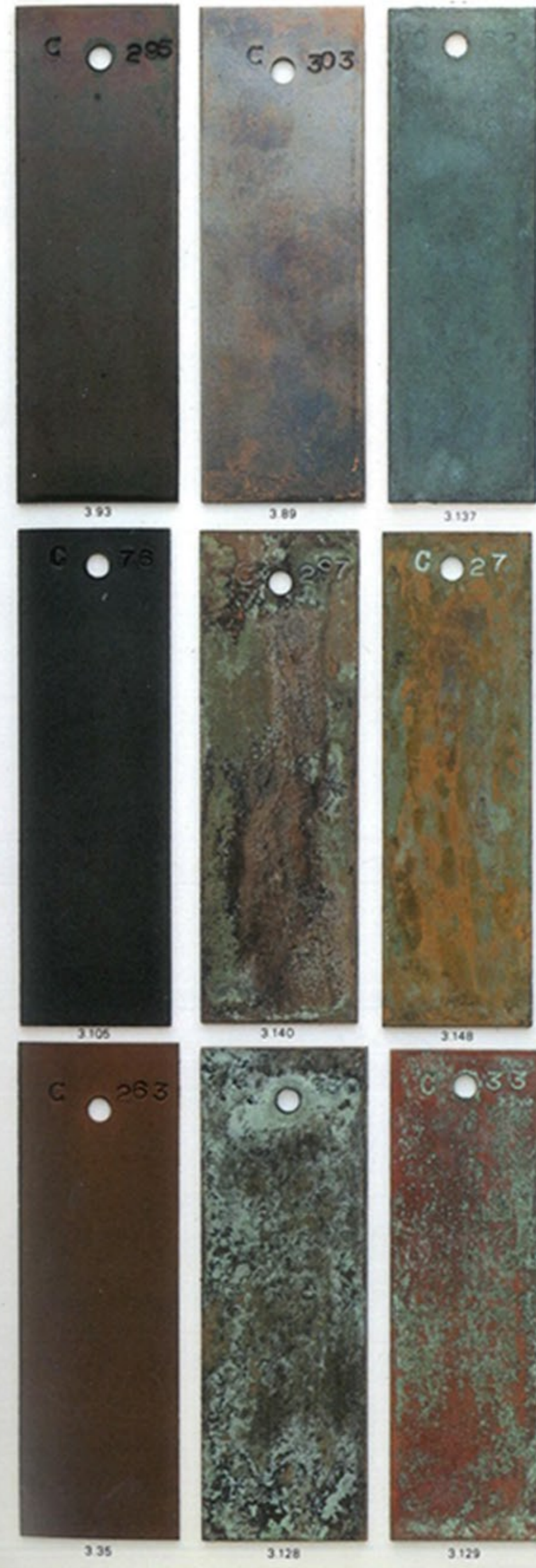
“memory orbit reinterpreted into oversized structure”



An orbit of memory circling the body, stitched together as a quite trace.



PLATE V COPPER



Copper Patina Samples- colour as a trace of time

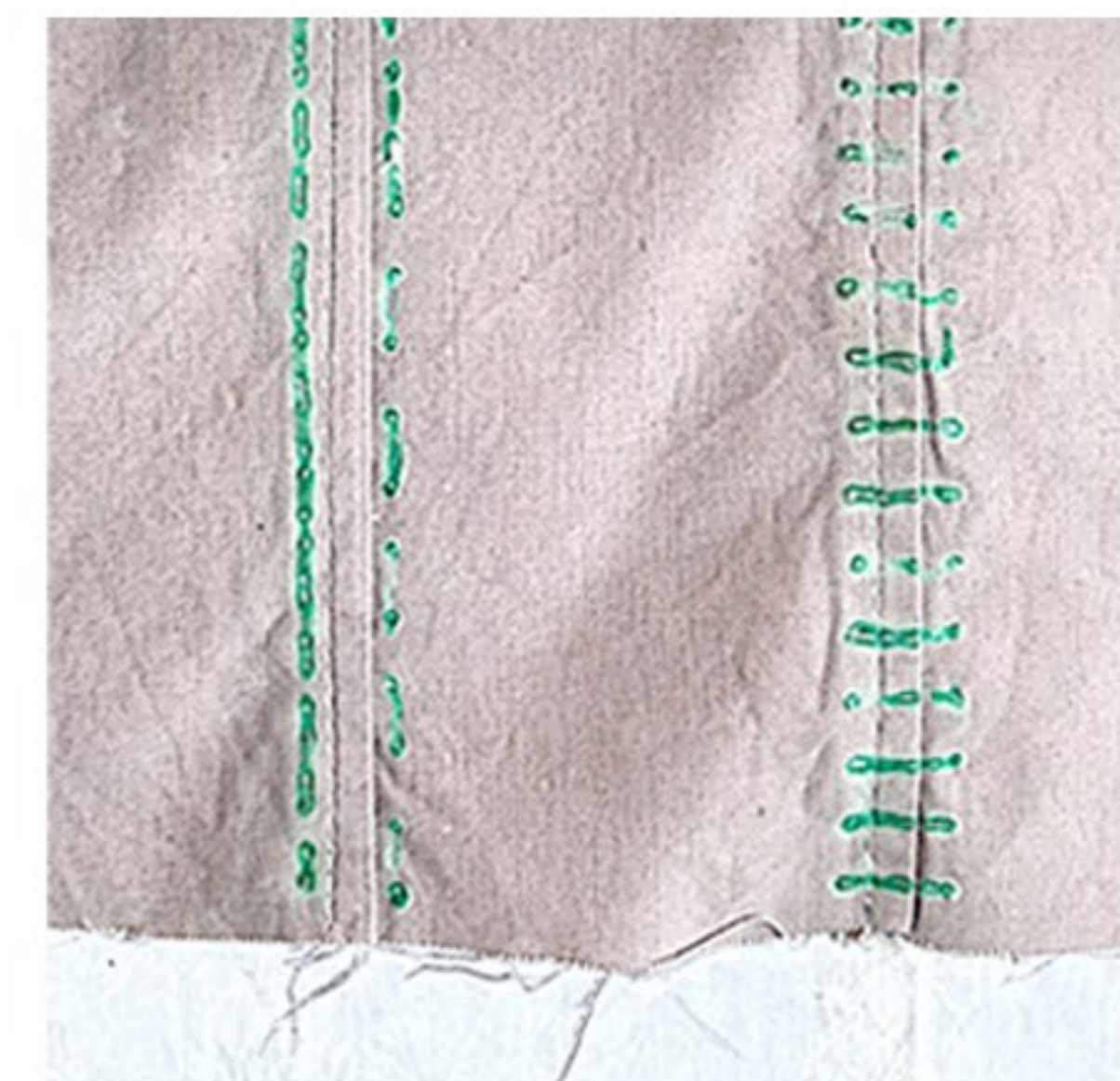
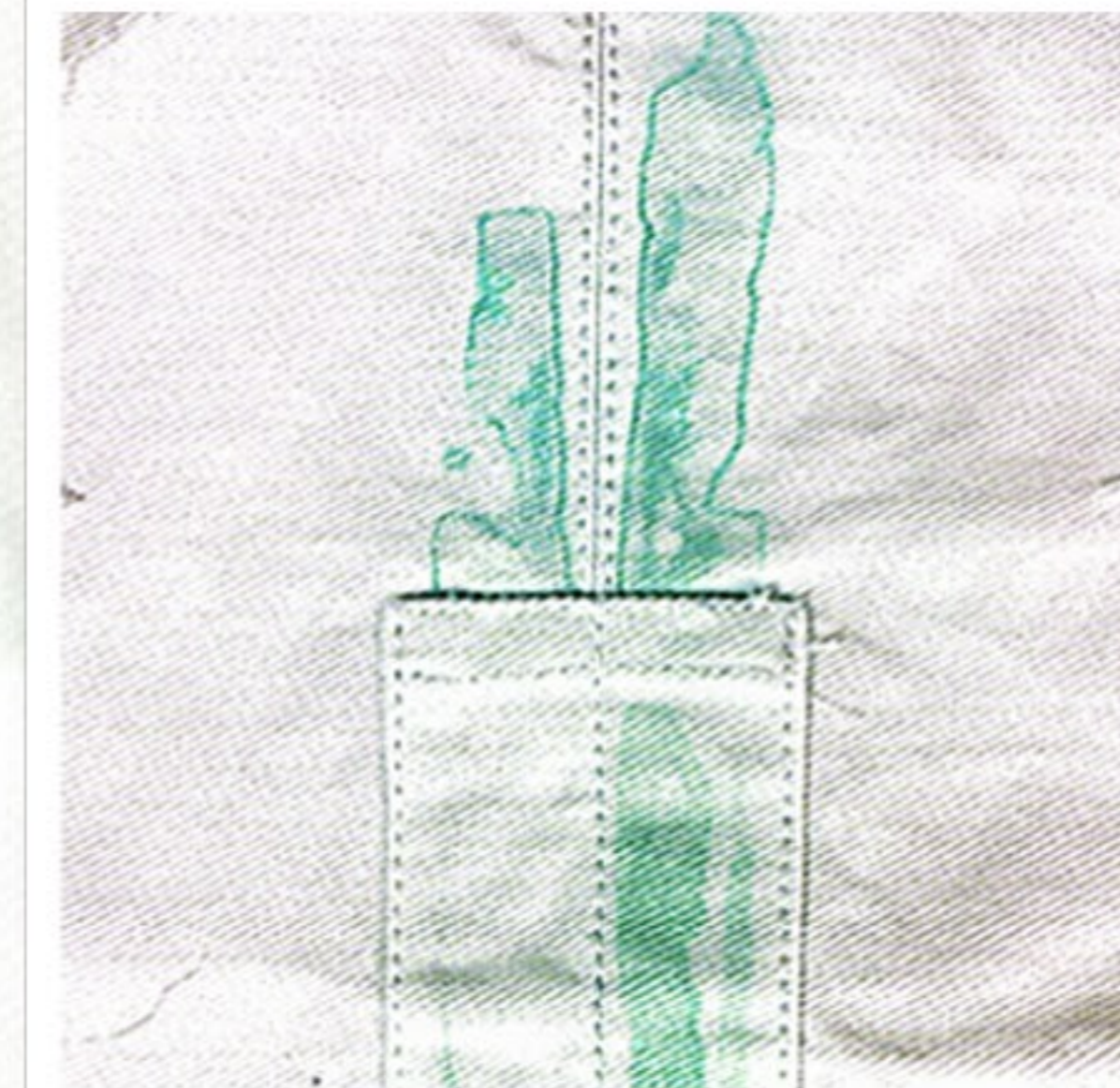
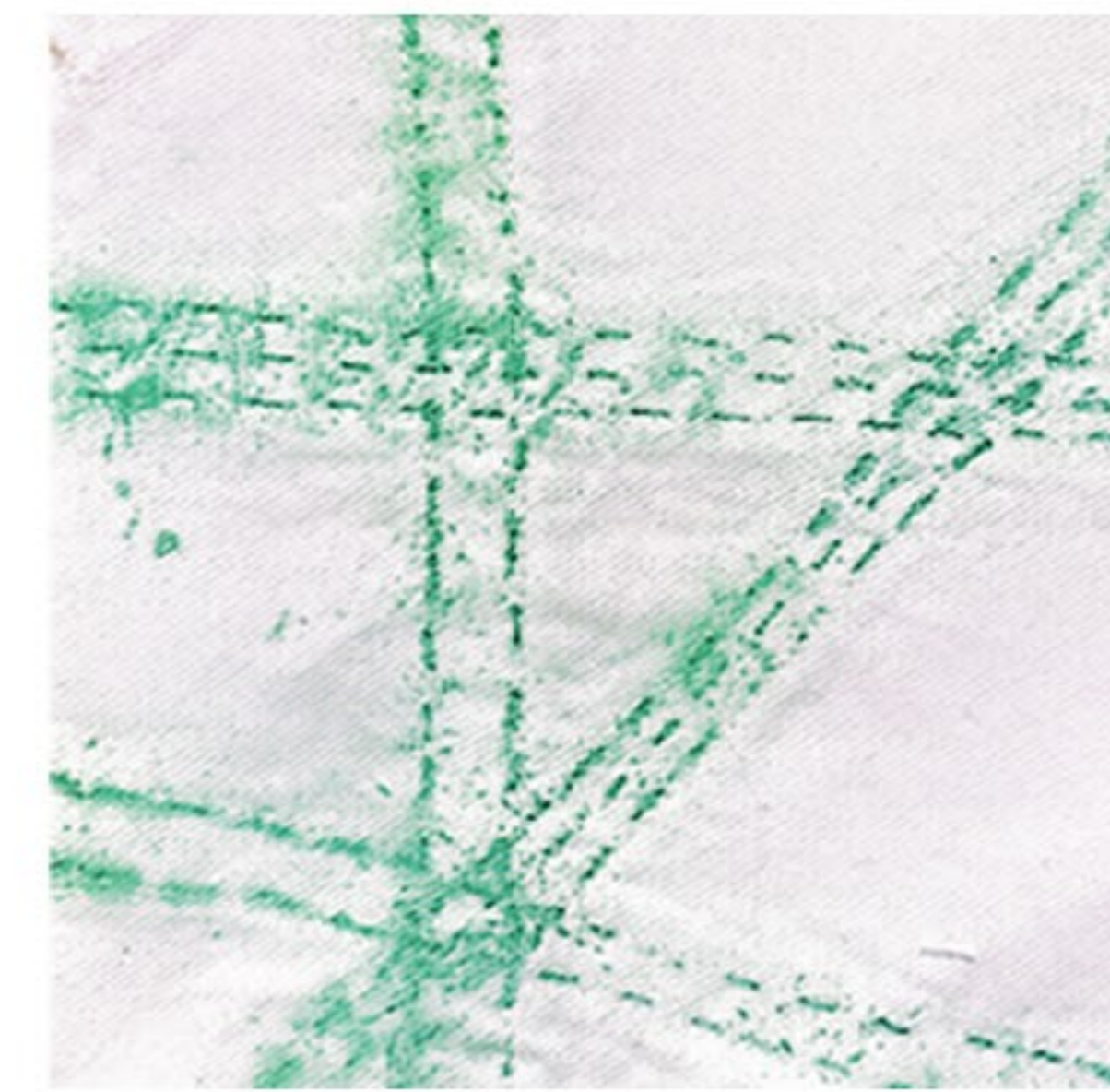
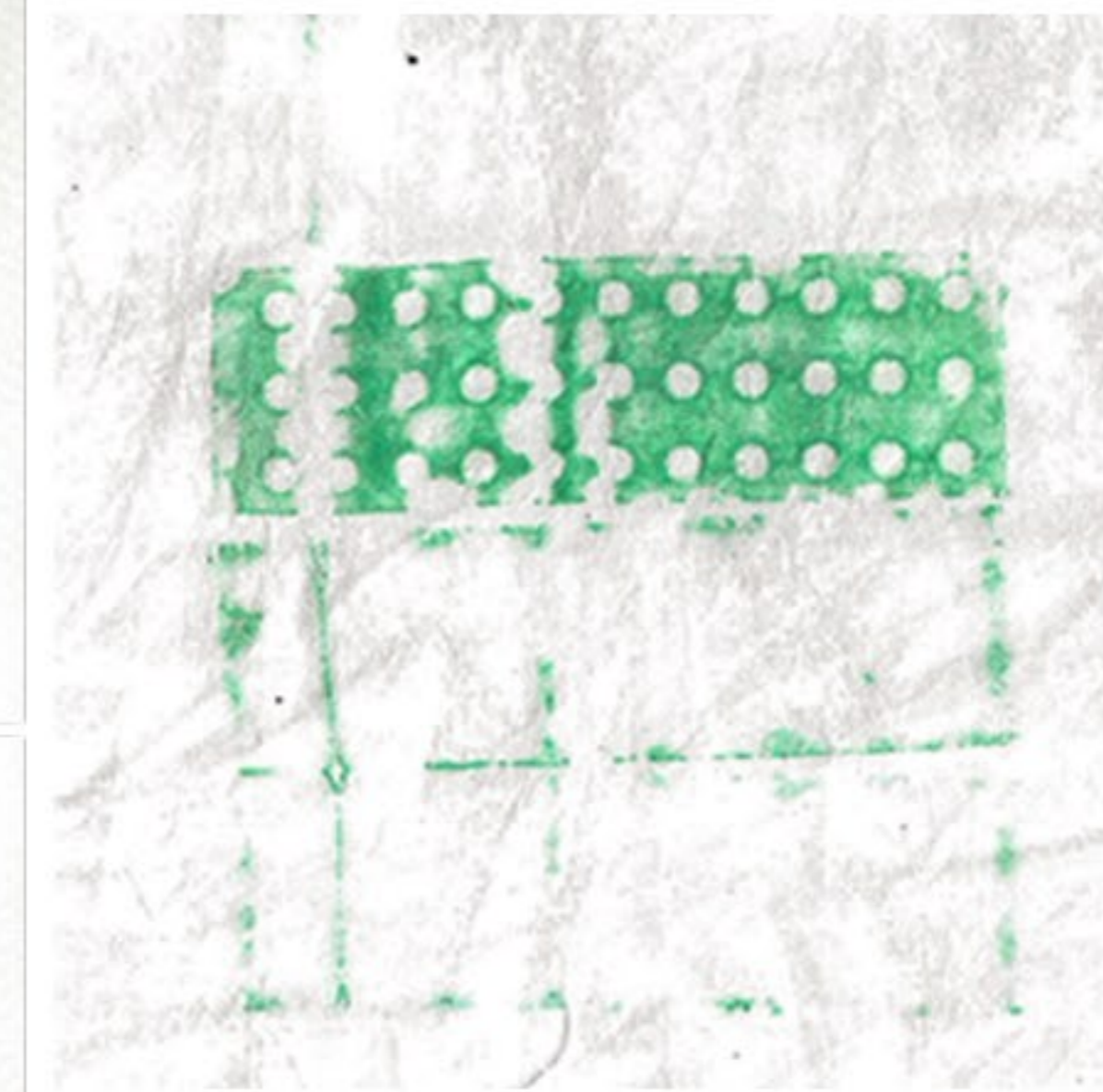
The emotional Materiality of Copper

Copper's familiar presence in everyday life, combined with its uniquely diverse oxidation colours, mirrors the fluid and evolving nature of memory. Its surface transforms through touch, atmosphere, and time, making it an ideal medium for exploring memory as a material process.





Copper scraps set for surface oxidation

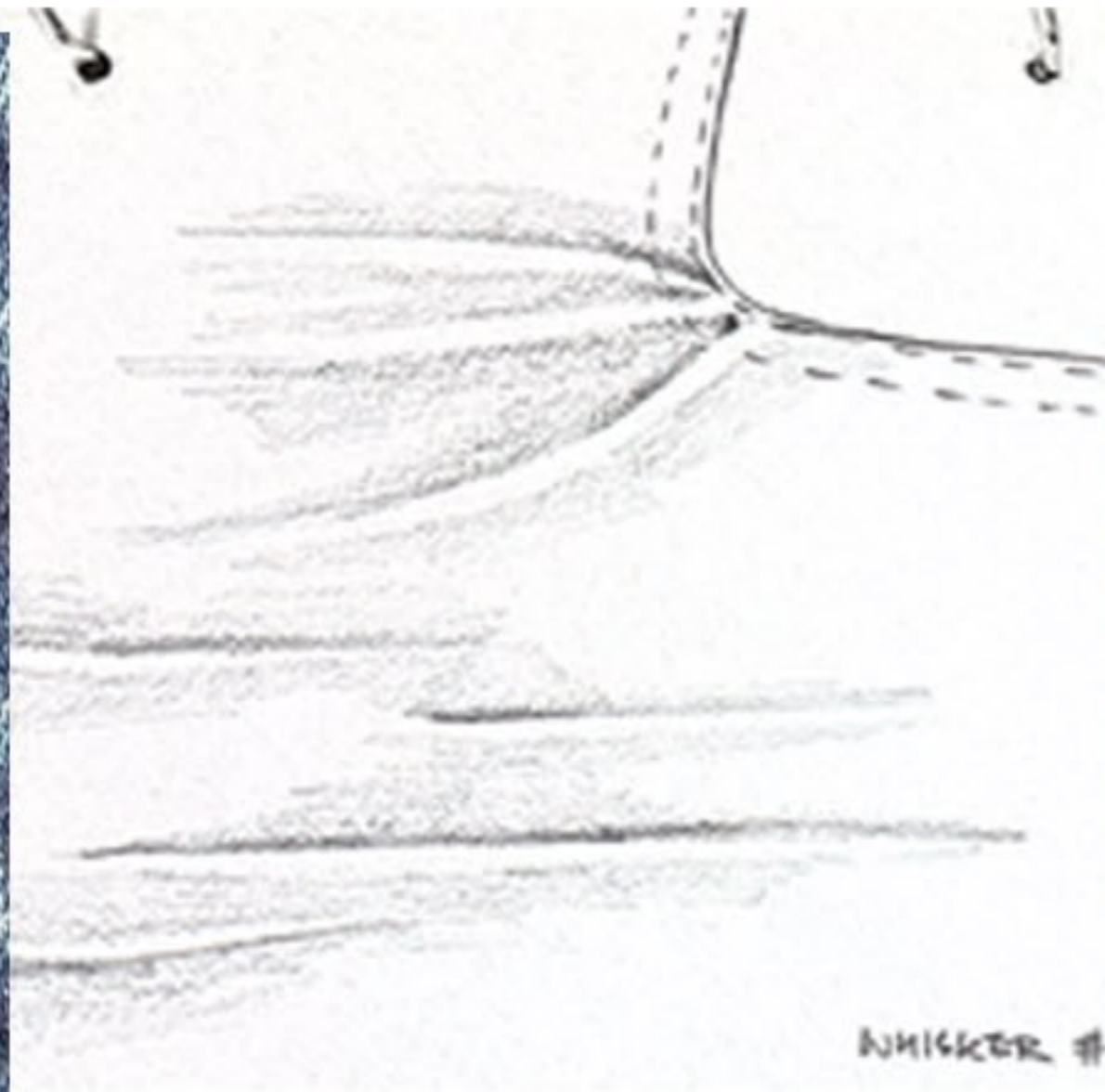
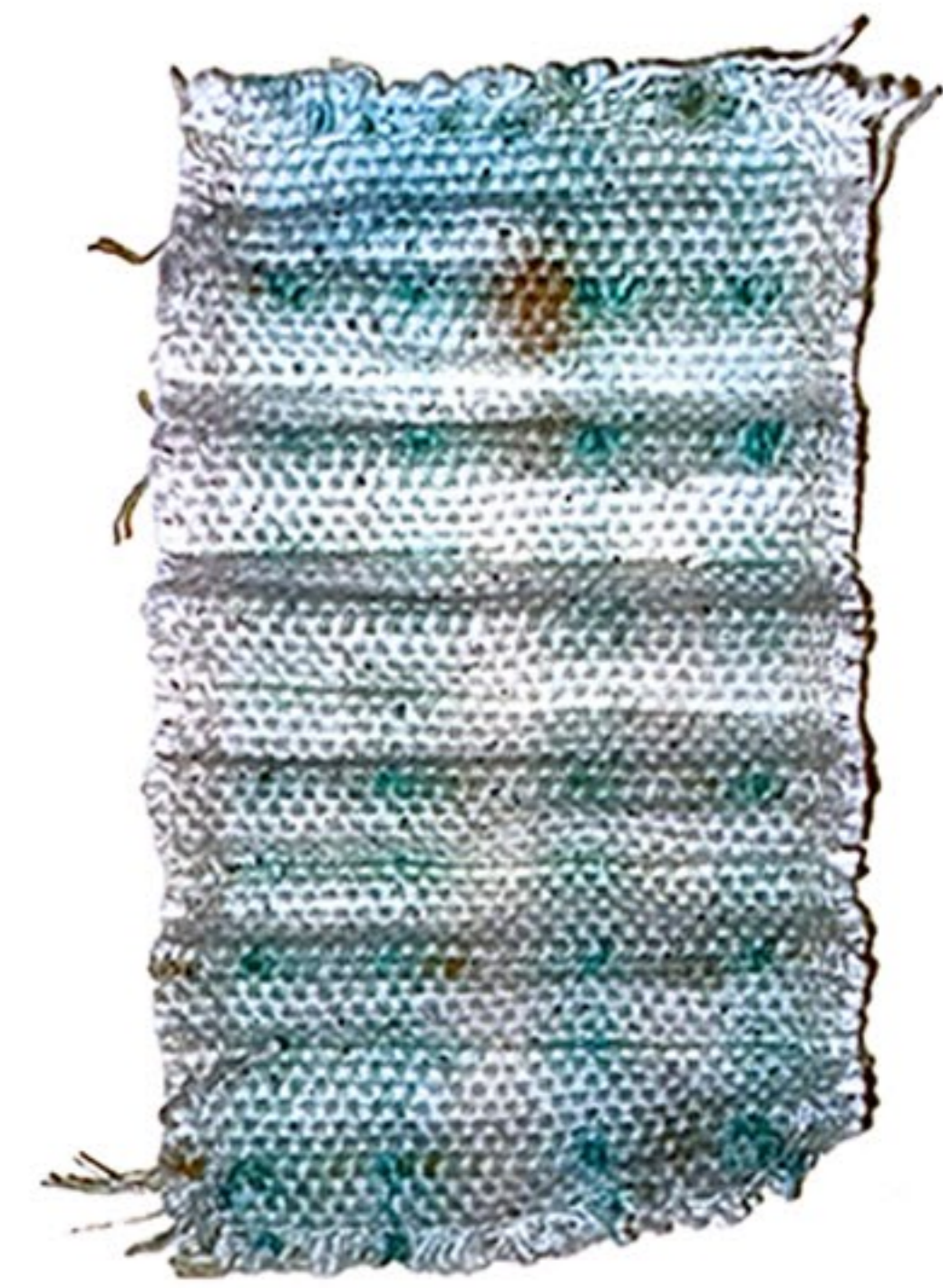


Material Residues to Textile Impressions

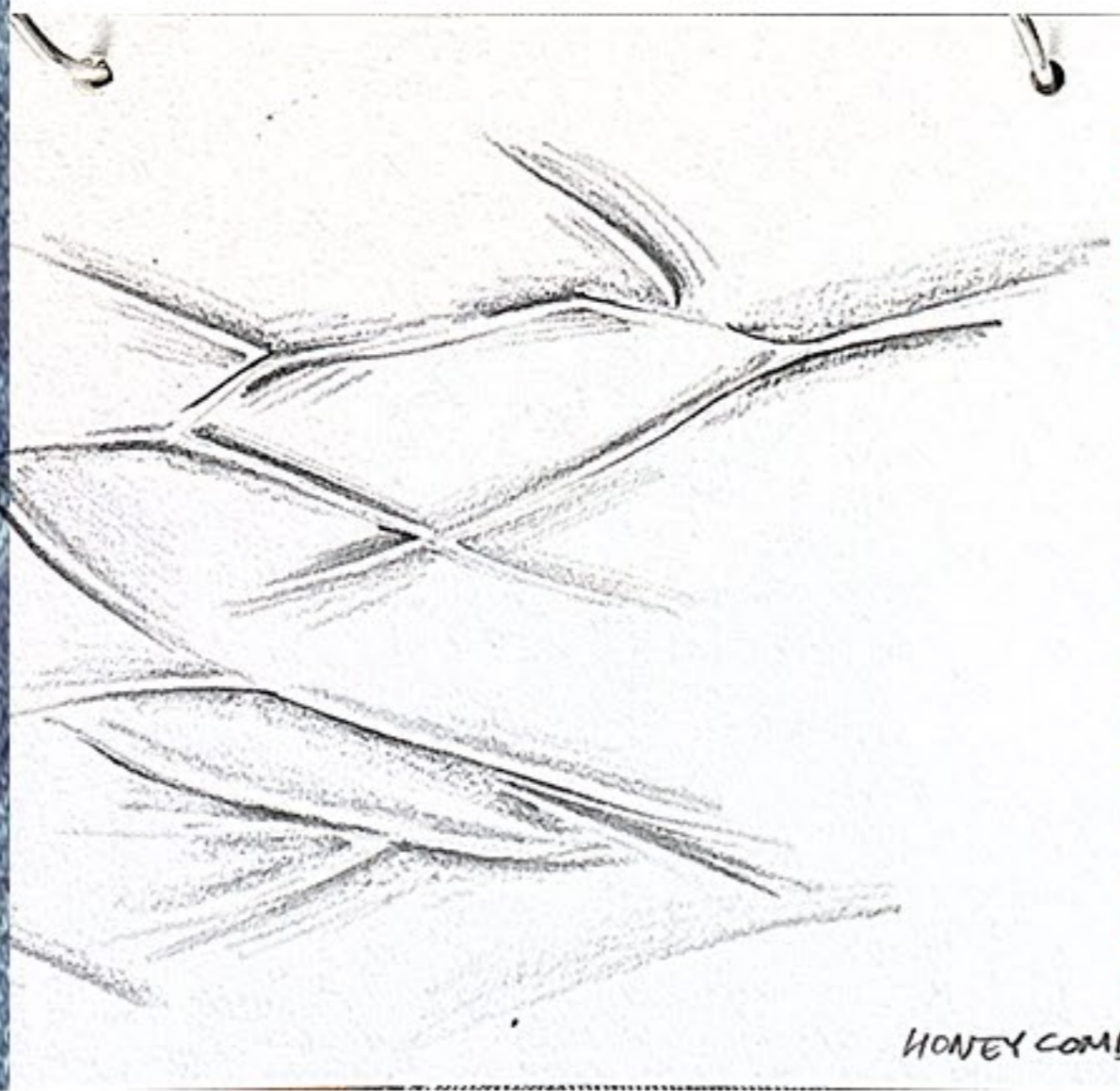
Copper remnants inform stitched, printed, and oxidised textile impressions that explore memory as layered material traces.



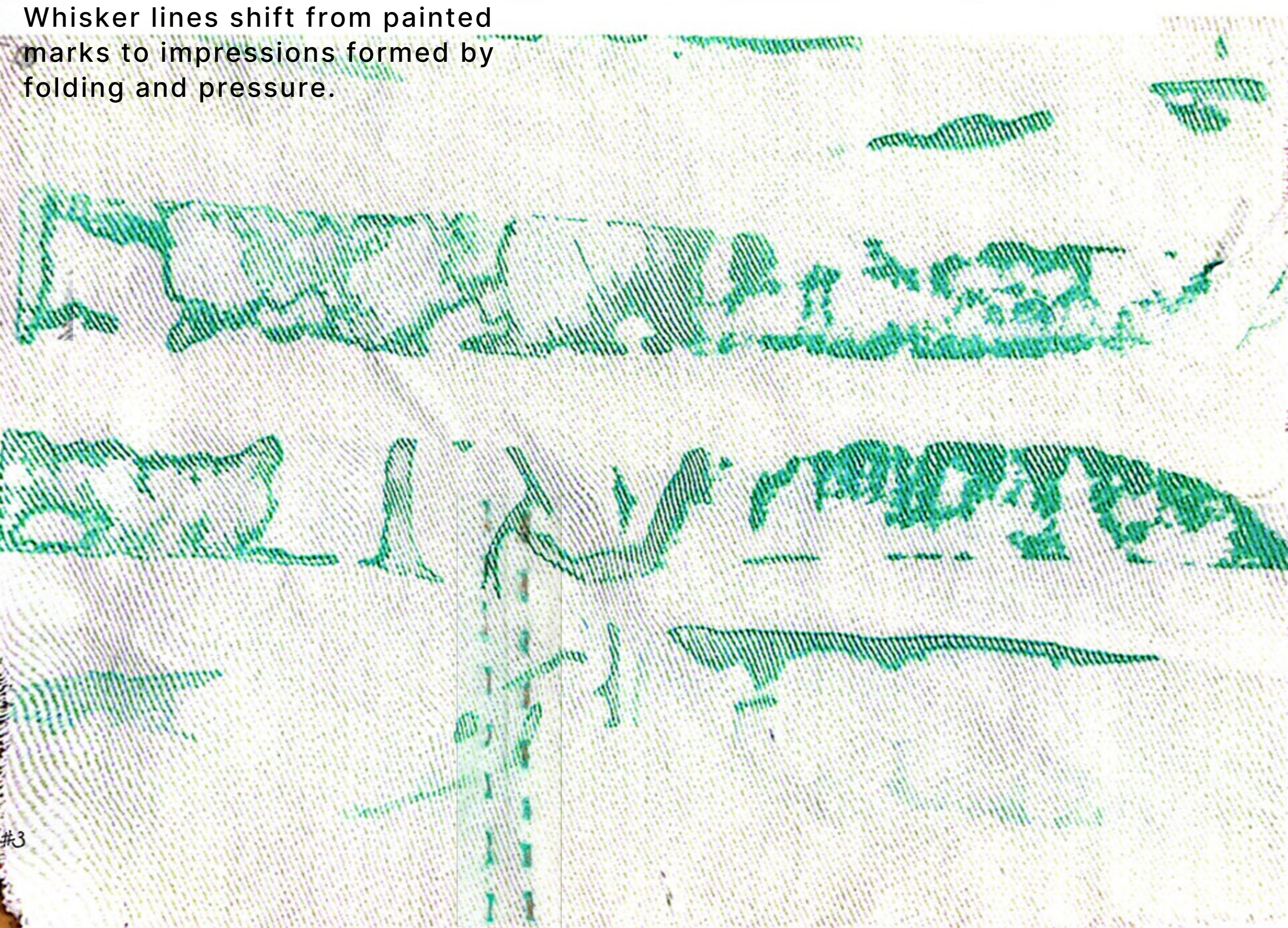
**Direct Tracing
Through Folded Fabric**



WHISKER #4



HONEY COMB #3



Whisker lines shift from painted marks to impressions formed by folding and pressure.

Memory

Time

Trace

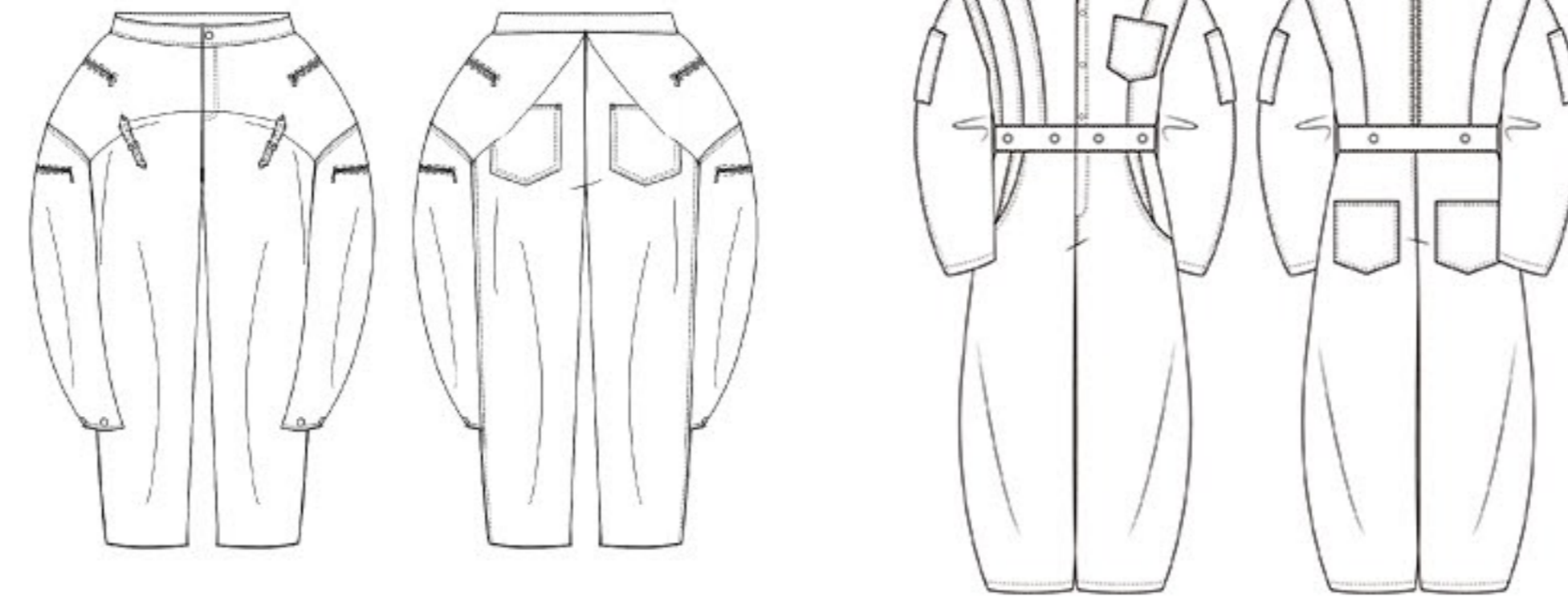




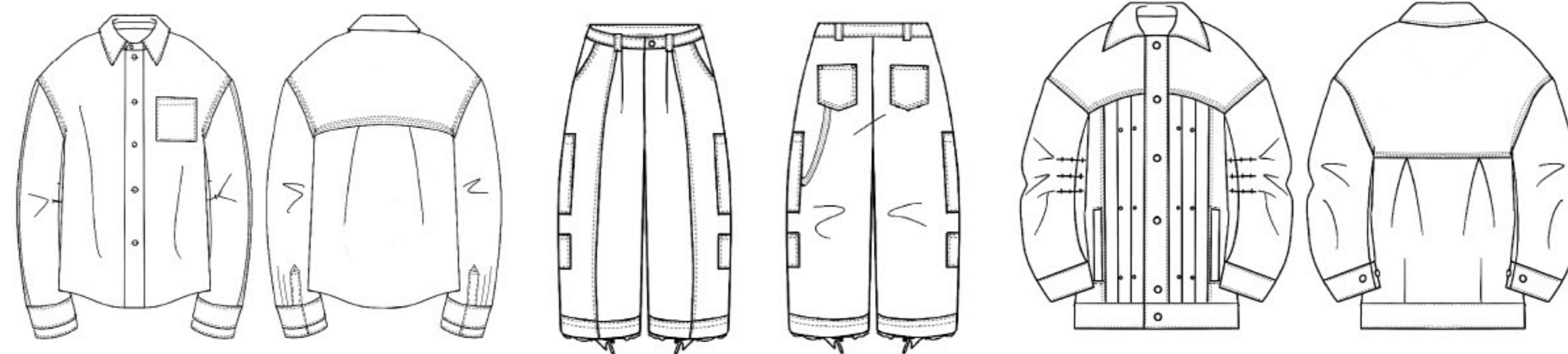
Memory

Time

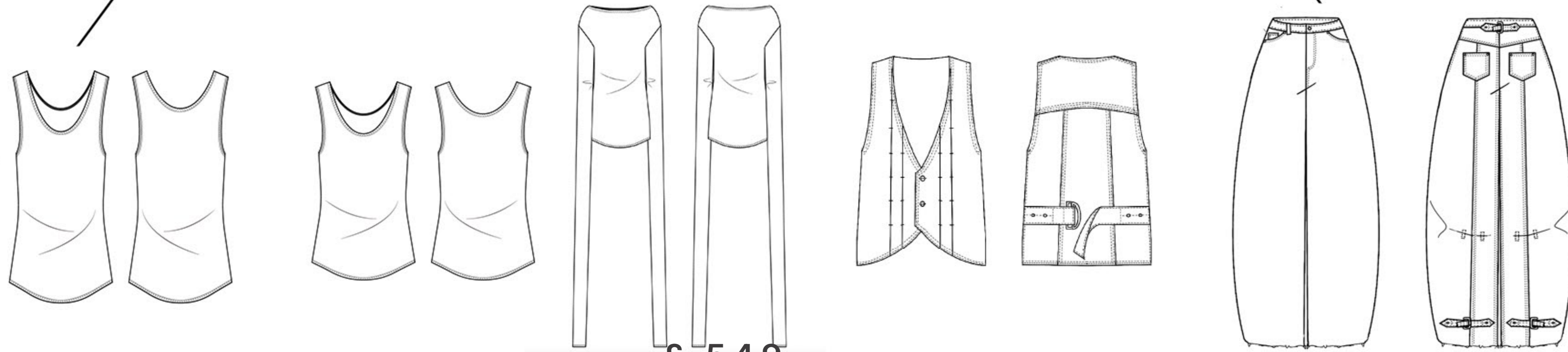
Trace



+ £ 1500



£ 550 - £ 1499



£ 549



Memory

-

Time

-

Trace

SOOJIN LEE

FORMS OF REMAINING



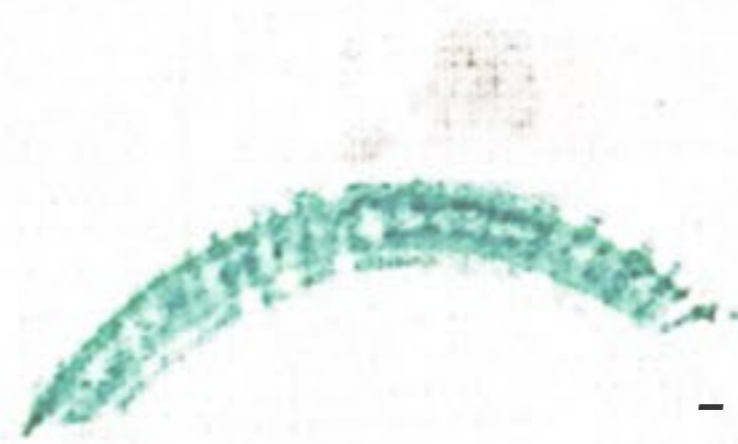
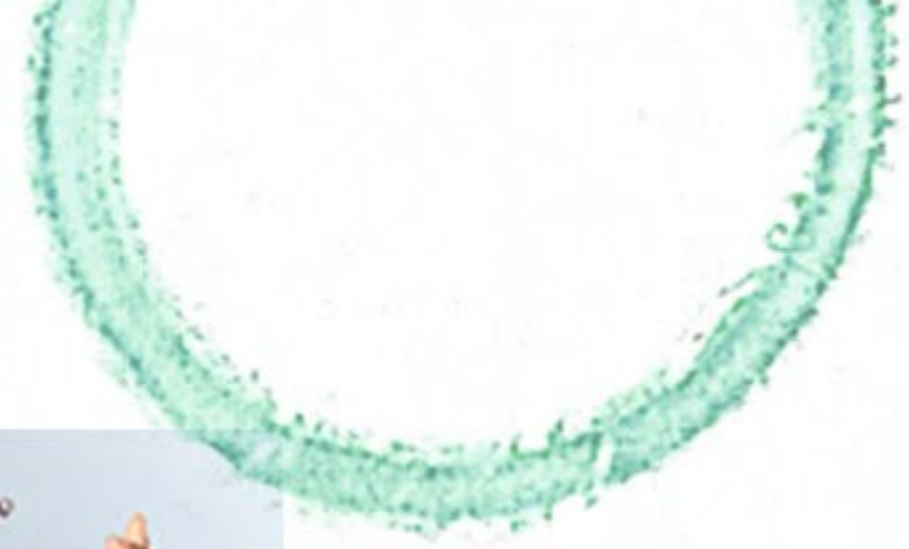


Memory

Time

Trace



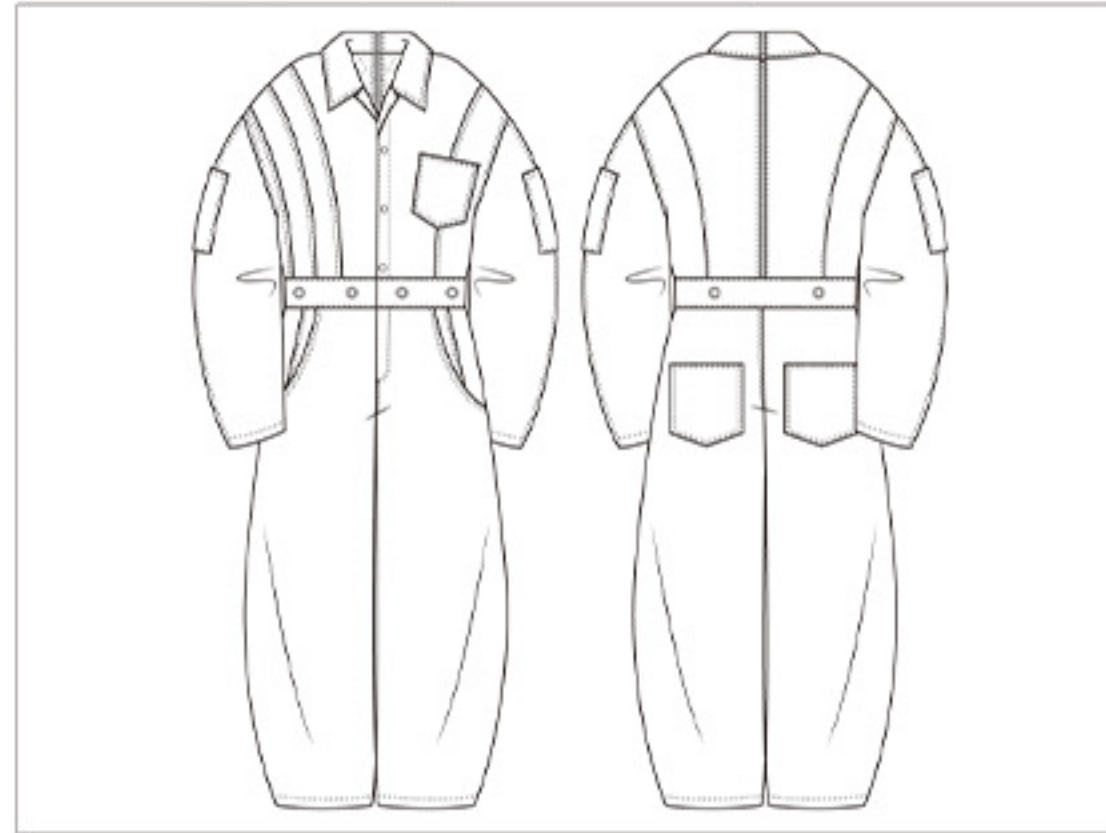




PRODUCT SPEC SHEET

FABRIC / SUPPLIER	Japan Blue Co.Ltd
USEABLE WIDTH	150CM
FUSINGS	Light-Mid Weight
LININGS	Quilted Lining
FASTENING	Snap, Eyelet, Zipper
TRIMS	Cord, Ring
EX WORKS DEADLINE	08.12.2025.

STYLE NAME	Copper Boilersuit
STYLE NO.	1
SEASON	FW25
SUPPLIER	Soojin Lee

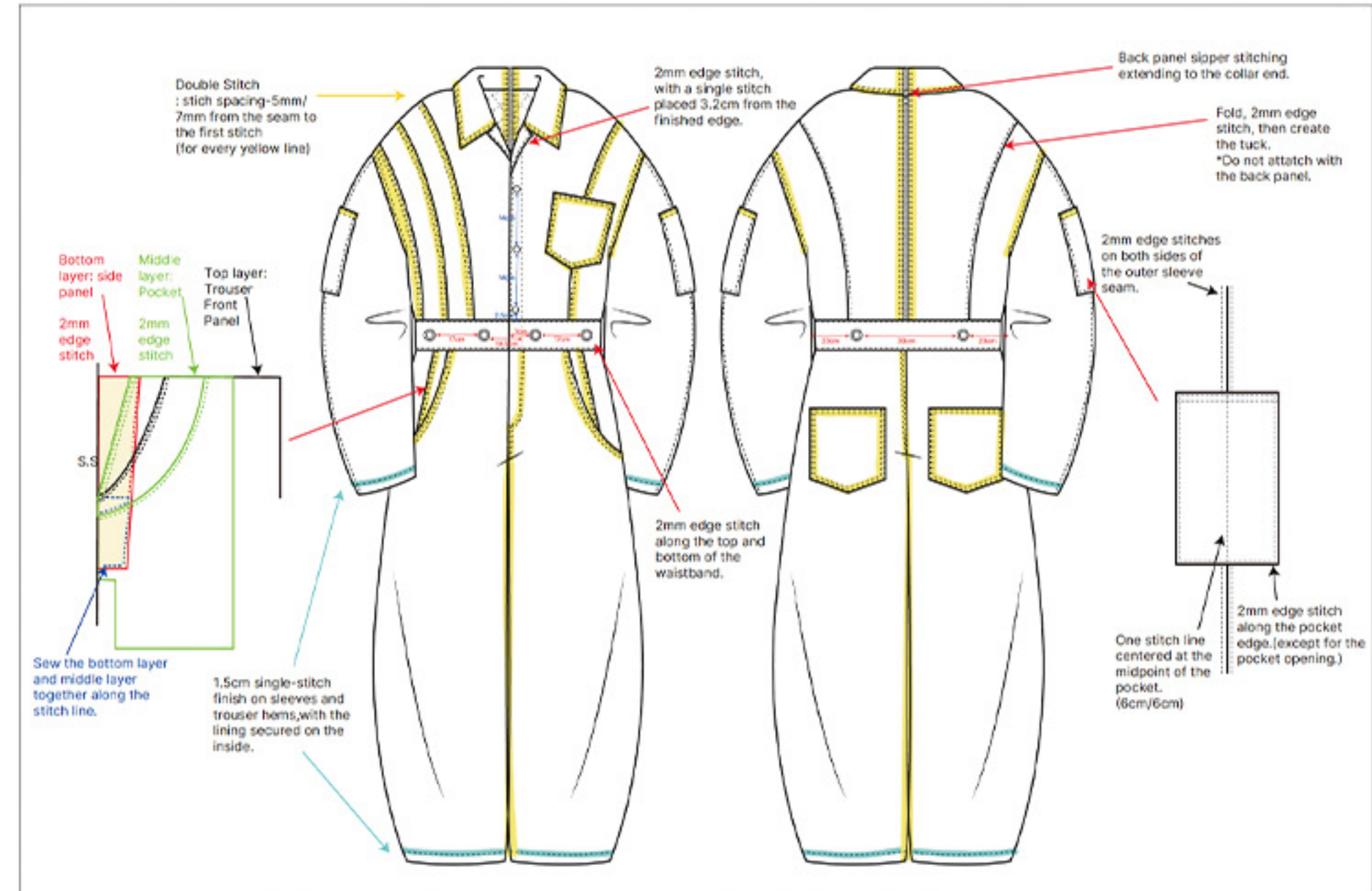


SWATCH

COMMENTS

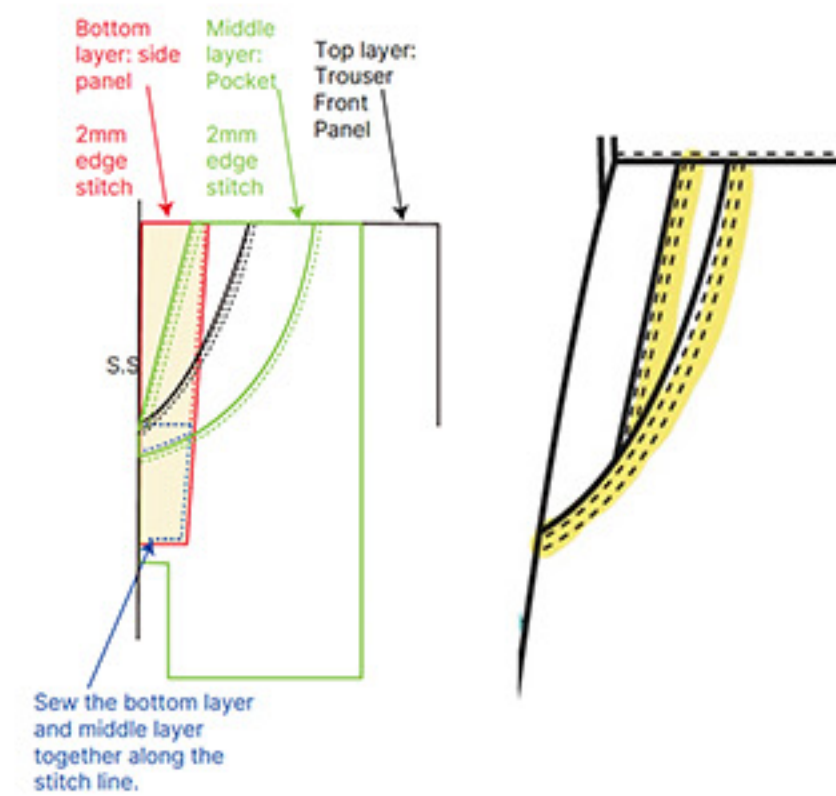
The top and trouser sections are first constructed, after which the garments are transferred to studio for the oxidation treatment.

Following the finishing process, the garments are returned to the factory for lining attachment, final construction, and QC.

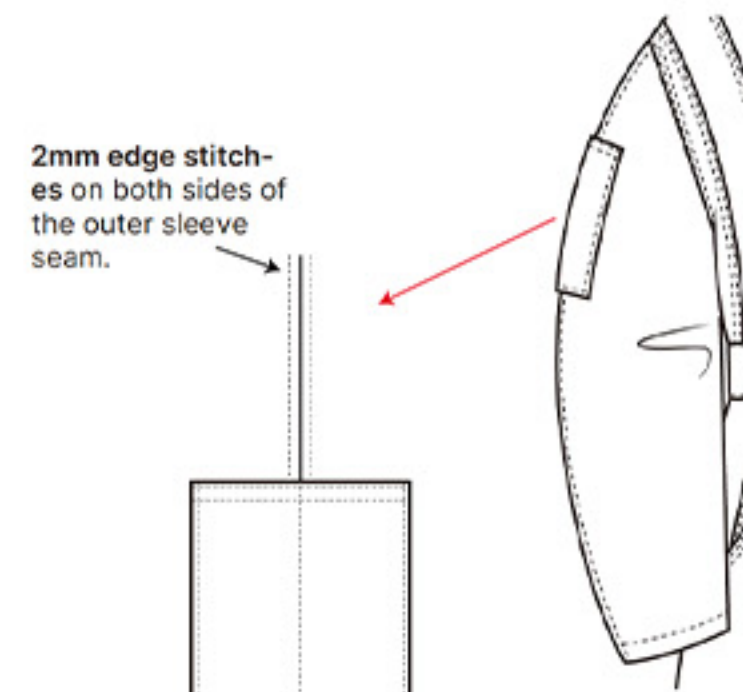


STYLE NAME: COPPER BOILERSUIT

* Sample attached.



Front- Side Pocket.



Sleeve Side Pocket





THANKS