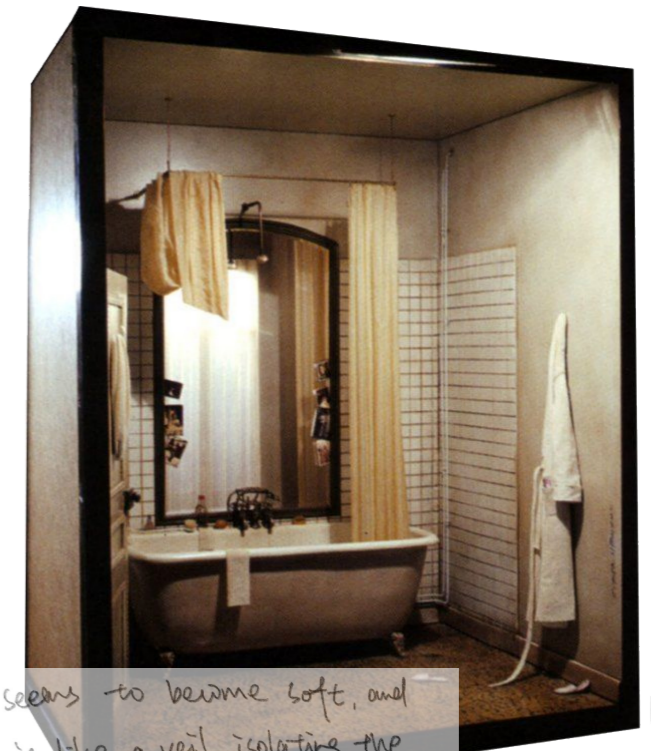


O It begins with water.
Falling, breaking, dissolving.
I learn to breathe inside it.



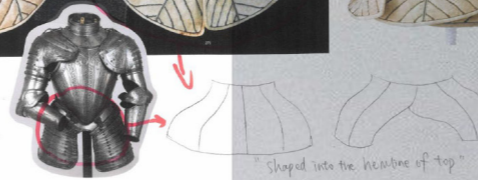
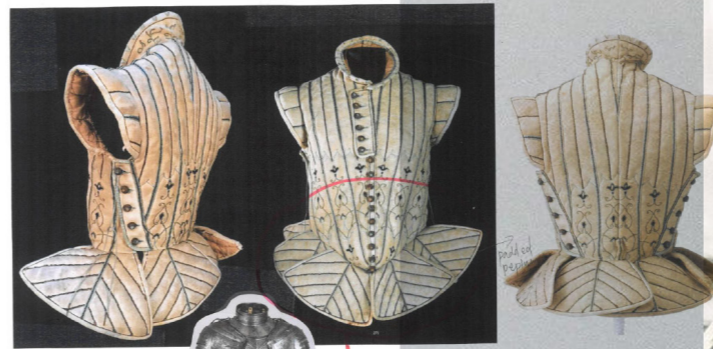
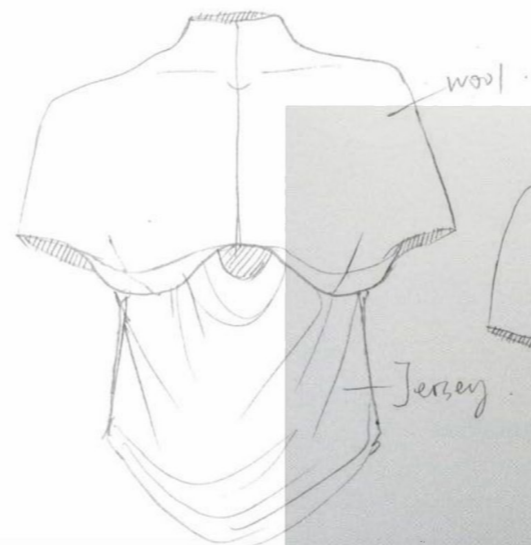
In this hazy mist, time seems to become soft, and thoughts drift away. Steam is like a veil, isolating the world from the outside, leaving only you and this warm private space. It is not only the rising of water vapor, but also a kind of soothing of the soul, making people feel endless peace and romance in a short moment.

**I wake before the city stirs.
The air is cool, the light slow — a quiet pause between stillness and becoming.
I dress not to shield, but to remember my skin.
The world asks for sharpness; I answer with softness.
My clothes breathe with me — gentle, grounded, alive.
They hold me when I scatter, steady me when I fade.
I don't wear fashion to be seen, but to return —
to find calm in the weight of wool, in the scent of cedar,
in the quiet rhythm of fabric that reminds me to breathe.**

Where water softens, strength returns.
 Where quiet gathers, resilience forms.
 In the shower, I become a Soft Warrior.

The world asks for hardness.
 I answer with softness.

02



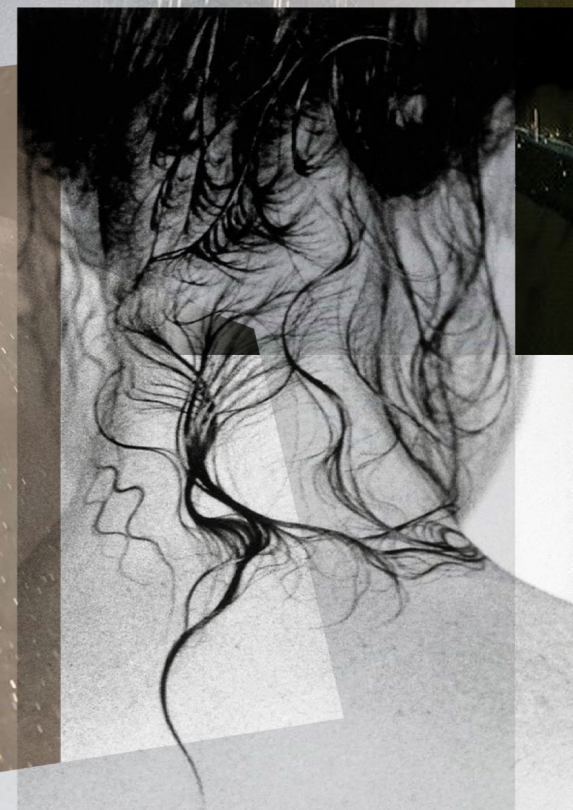
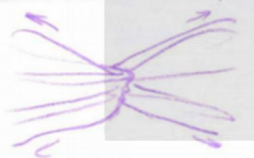
This gown, with its flowing drapery and open back, reflects the 1930s fascination with classical antiquity reinterpreted through modern elegance. The soft, fluid fabric recalls the line of Greek sculpture, turning the body into a living statue. At the same time, the daring cut reveals a new confidence in femininity, balancing sensuality with timeless grace. Such designs embodied Hollywood's vision of the ideal woman, where luxury and fluid form suggested both escape and aspiration during a decade of uncertainty.

Thierry Mugler



"soft power"
 These bodies are wrapped in delicate fabric like a protective second skin, evoking intimacy and vulnerability. Yet when the arms extend, the silhouette sharpens into bold geometric lines, protecting tension and authority. It transforms softness into power — an expression of sensuality fused with raw command presence not through but through the body's sculptural force.

The garment wraps the body like a second skin, while extended sleeves create sharp, dramatic outlines when stretched. It blurs the line between body and fabric, turning clothing into a soft sculpture with theatrical impact.





a sickness kept her in her world



A scented fabric pouch that carries the shower's calm into daily life.
 Soft structure, gentle fragrance, and tactile comfort.
 A small piece of "soft armour" the wearer can hold onto.

03 Steam becomes armor.
 Warmth becomes weapon.
 Vulnerability becomes entry point.

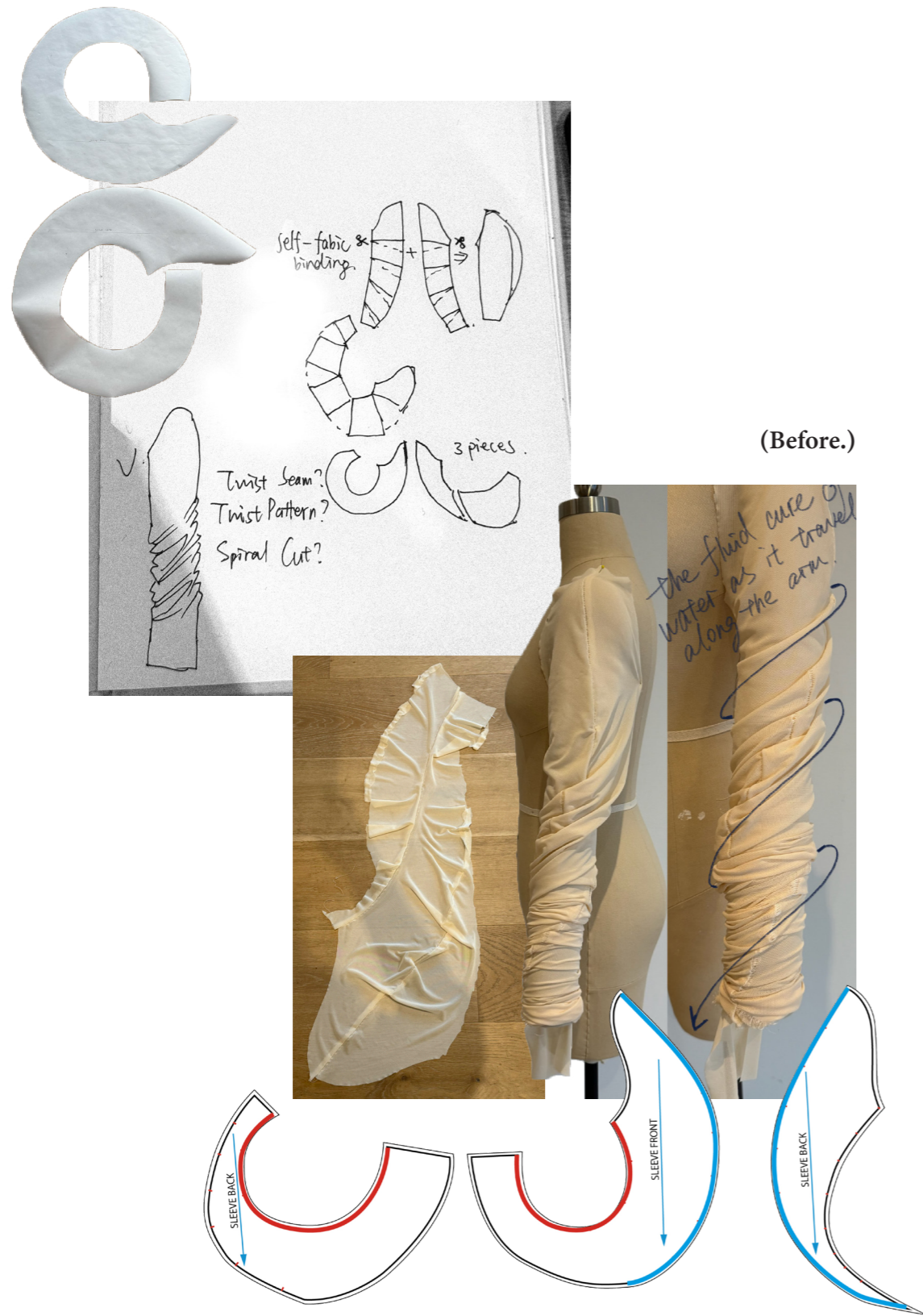


(Right) Lineup.

I reject traditional protection.
Too loud. Too heavy.
Mine sits closer to the skin. **04**

05

The body provides the map.
Curves. Joints. Collapse.
I simply sew along.



(Before.)



(After.)

Water naturally follows the curves of the skin, sliding and twisting as it moves. To echo this fluid behaviour, I developed curved pattern pieces that distort and rotate when worn. The panels create an organic flow around the body, allowing the garment to mimic the path of falling water.

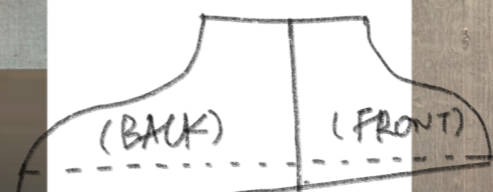


be a dress



The curves are not full enough.

All Fabric Change.



Shorter in Front
Longer in Back

needs more gathering volume

Soft armor is not concession.
It is strategy.
A silent form of defiance.

06



The waistline needs lower on the body

After stitching the fusible-canvas structure in place, a layer of wool felt was bonded to the surface using fabric adhesive. This created a smoother, more continuous curvature, onto which the final fabric was then applied.

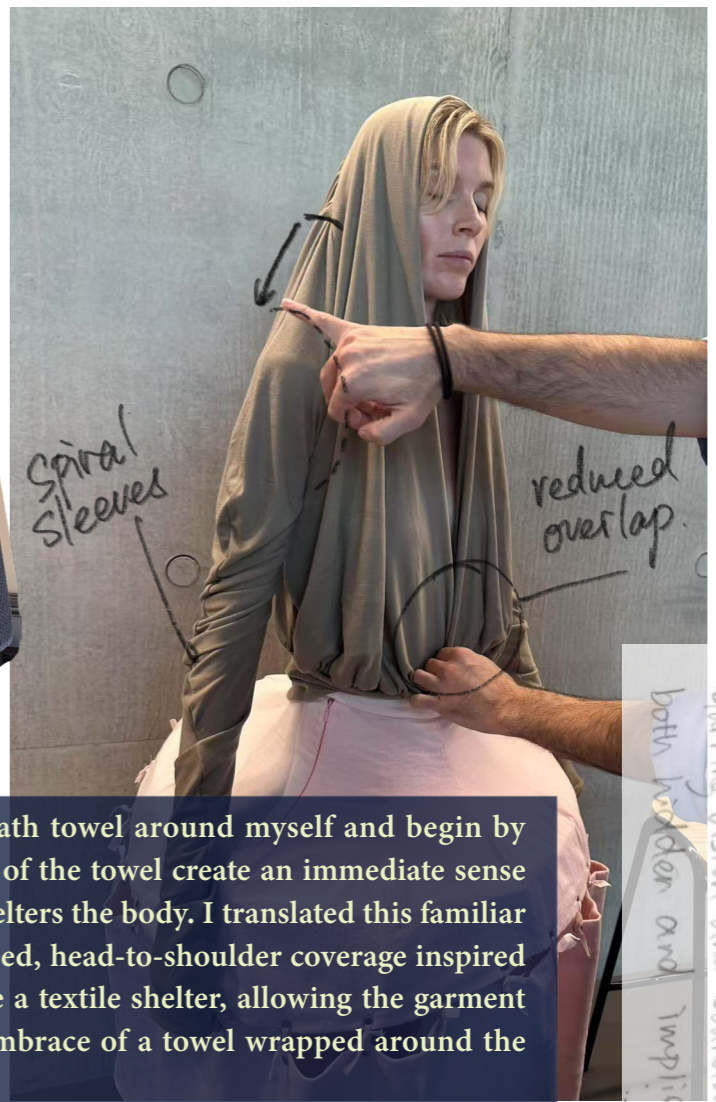


(Right) Armour Structure Translation Experiment.



Spiral sleeves

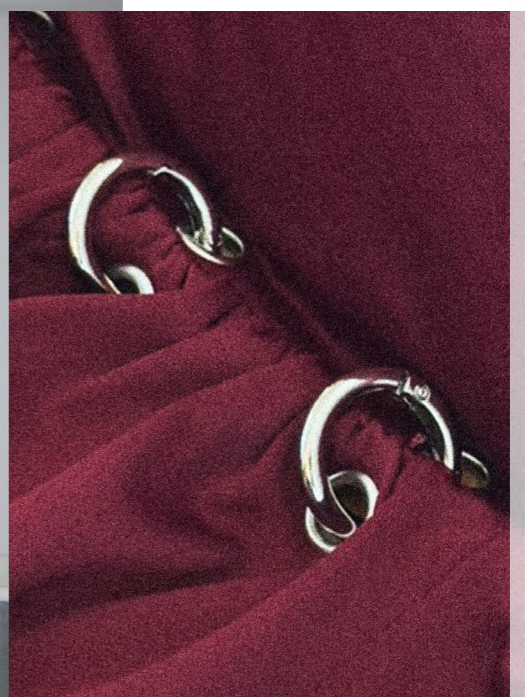
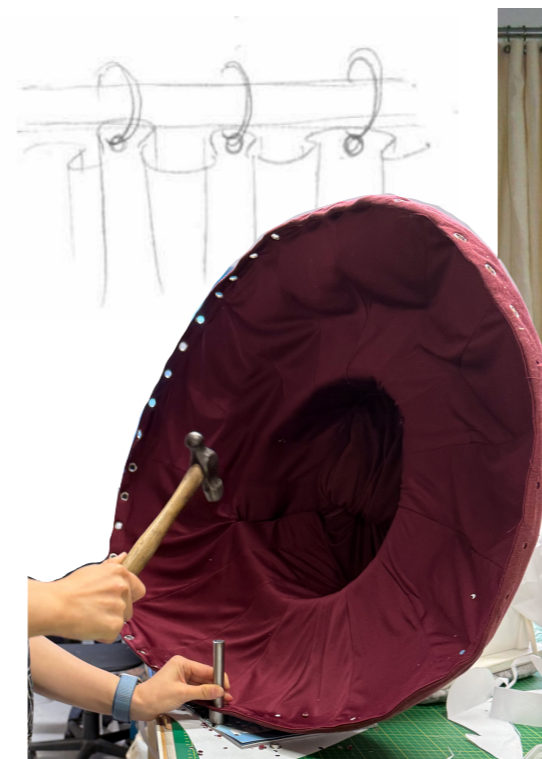
reduced overlap



The shower curtain serves as a vital medium of concealment and slant, blurring vision and boundaries. Behind its folds, body and emotion shift freely — both hidden and implied — creating a space that feels intimate and ambiguous.



After showering, I often wrap a large bath towel around myself and begin by drying my hair. The weight and warmth of the towel create an immediate sense of safety—a soft enclosure that briefly shelters the body. I translated this familiar gesture into my design process. The draped, head-to-shoulder coverage inspired a structural silhouette that functions like a textile shelter, allowing the garment to recreate the comforting, protective embrace of a towel wrapped around the body.



Shower curtain rings repurposed as soft articulations, guiding gathers and allowing subtle movement between fabric panels.

07 I look for shelter in fabric, and for release in the folds.

(Right) Toile Experiment.

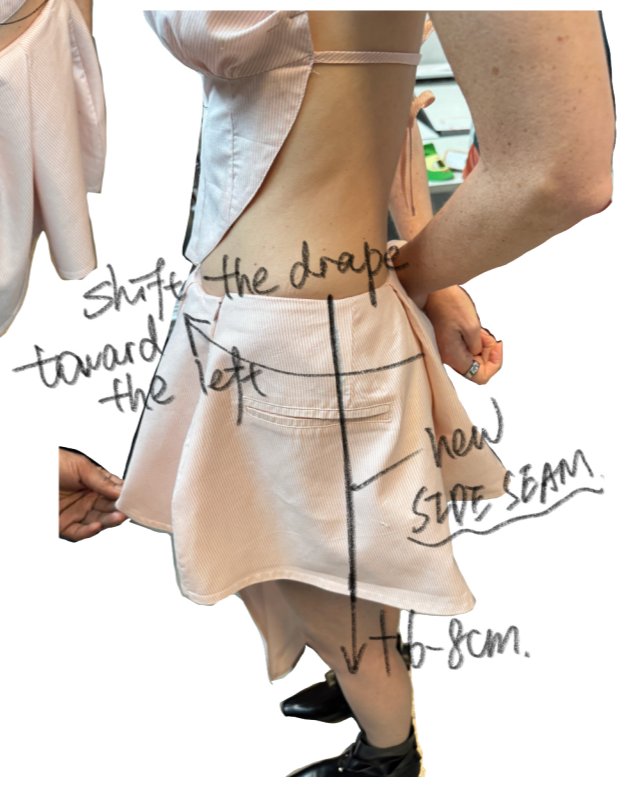


Every seam holds
an unspoken emotion. 08

(Right) LOOK 1.

09

I allow myself to bend.
To sag.
To reassemble.



(Left) Set Experiment.



(Before.)

(After.)



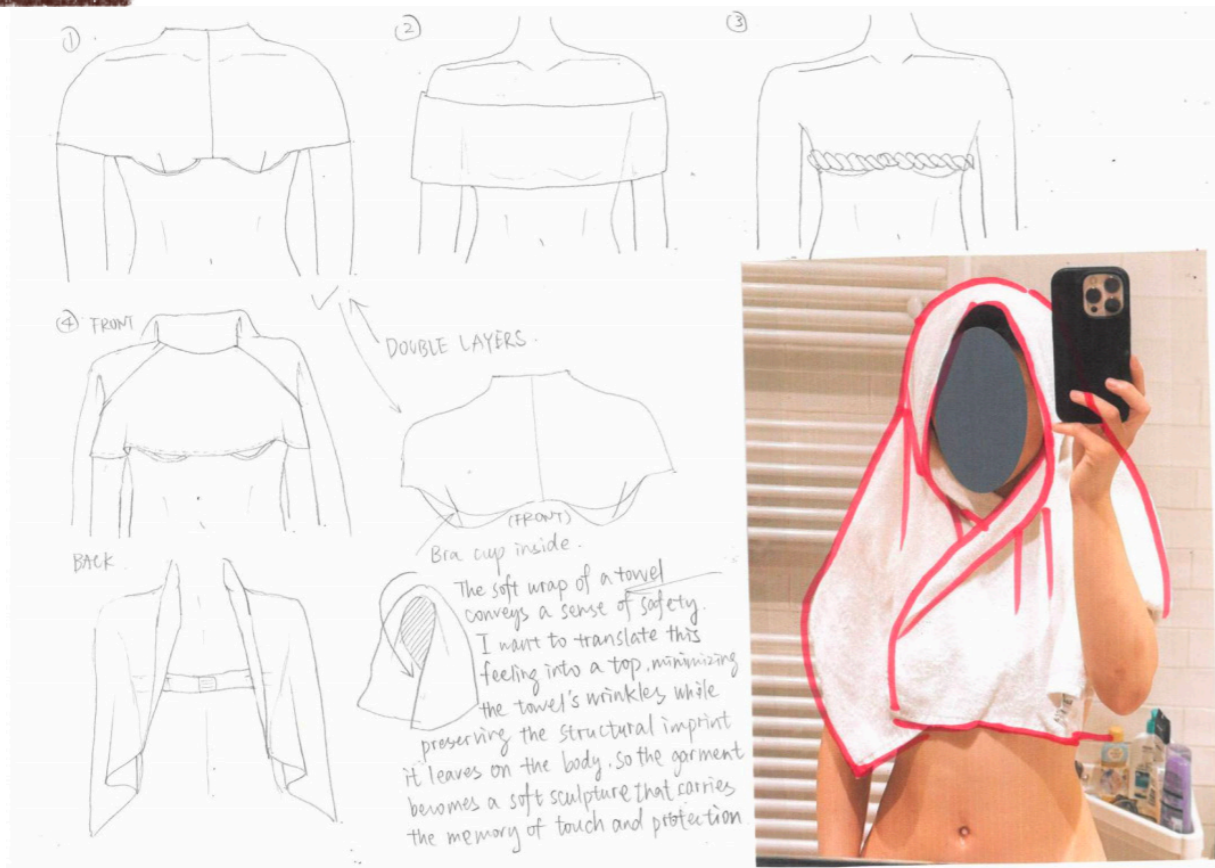
(Right) Armour Structure Jacket Experiment.



II Scent is an invisible shield.
Weight is a fluid bone.
Touch is a second skin.



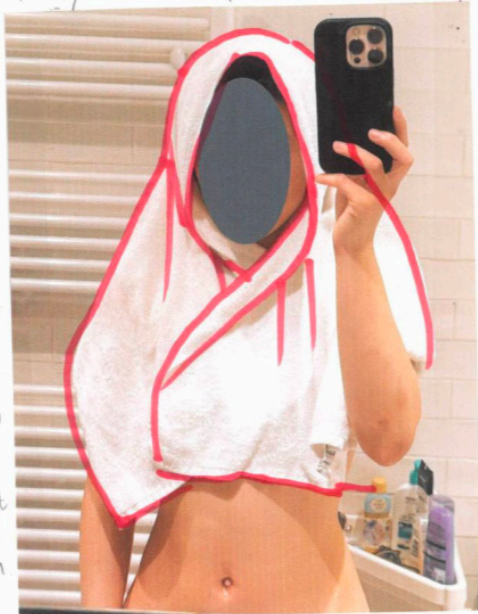
(Left) LOOK 2.



(Fabric Dyeing.)



(Right) Armour Structure Cape Experiment.



(Finishing test.)

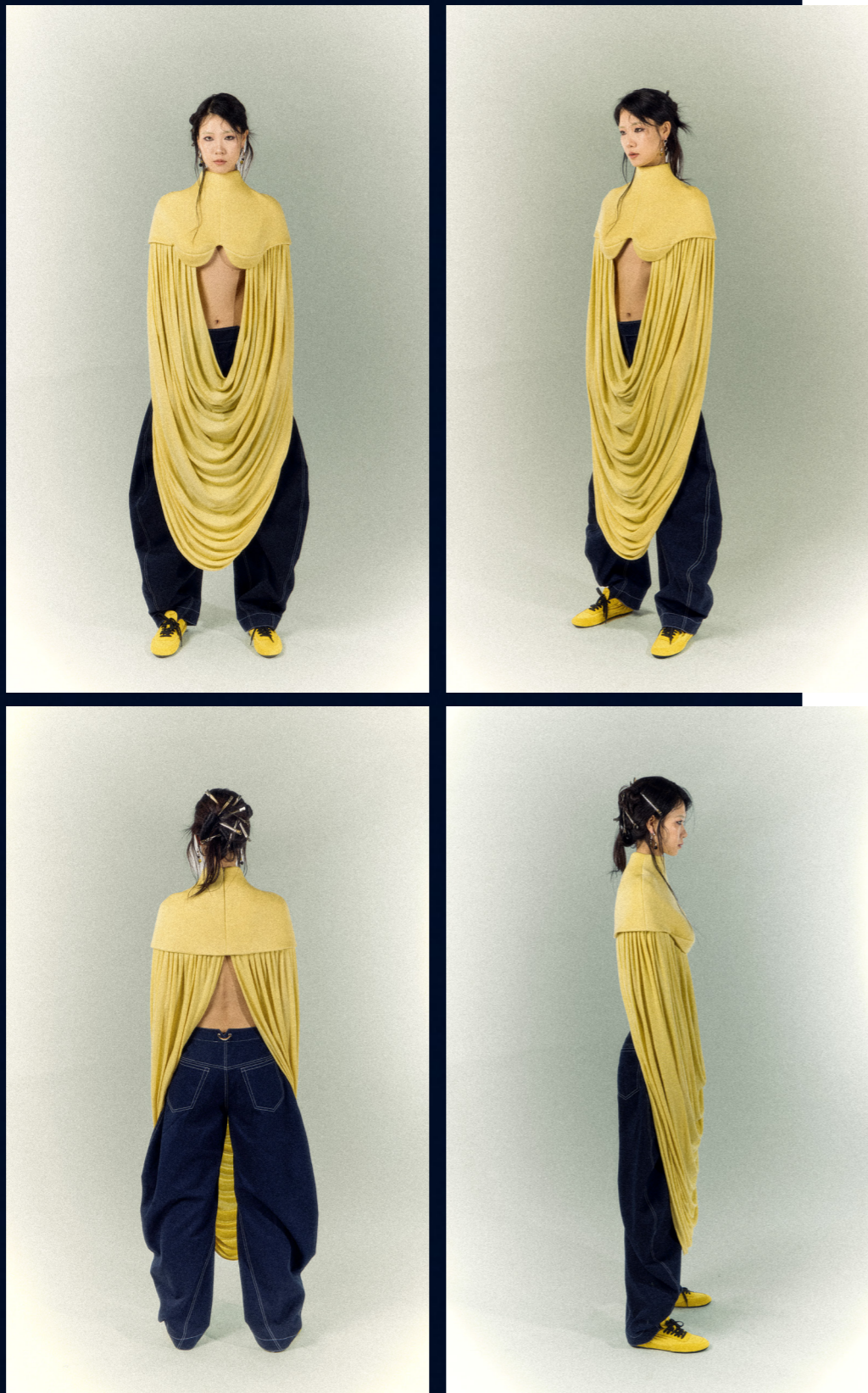
My armor comes from the everyday.
 Showering. Breathing. Pausing.
 These require no audience. 12

13 I am not escaping the world.
I am renewing myself in its fog.

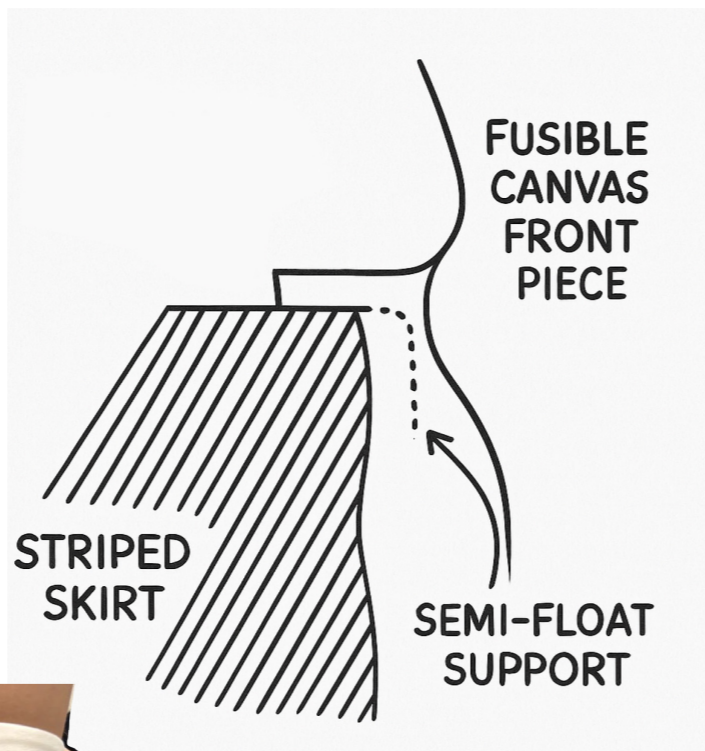
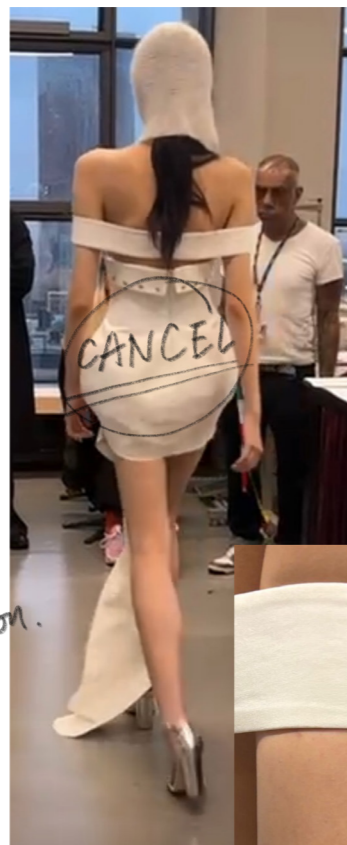


(Left) LOOK 3.

When the water stops,
I continue—
in a softer, stronger shape. 14



(Right) LOOK 3.



15 I am soft.
And I am sharp.

(Left) LOOK 4 & Toile Experiment.

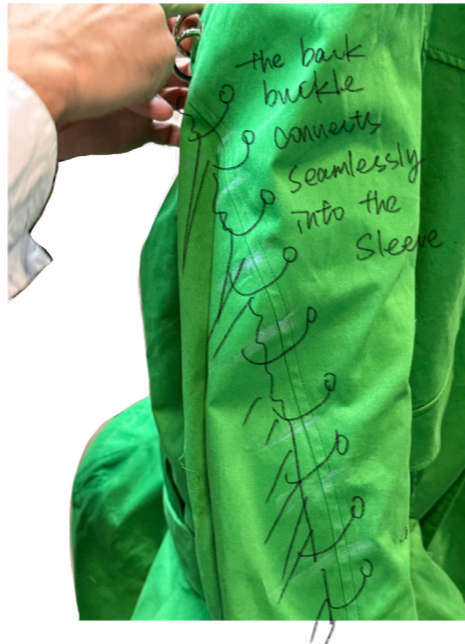


(Right) LOOK 4.



I am a warrior.
On my own terms. **10**

17 My silhouettes breathe.
Even when I cannot.



- ① the neckline is too tight around the neck
- ② change the collar shape



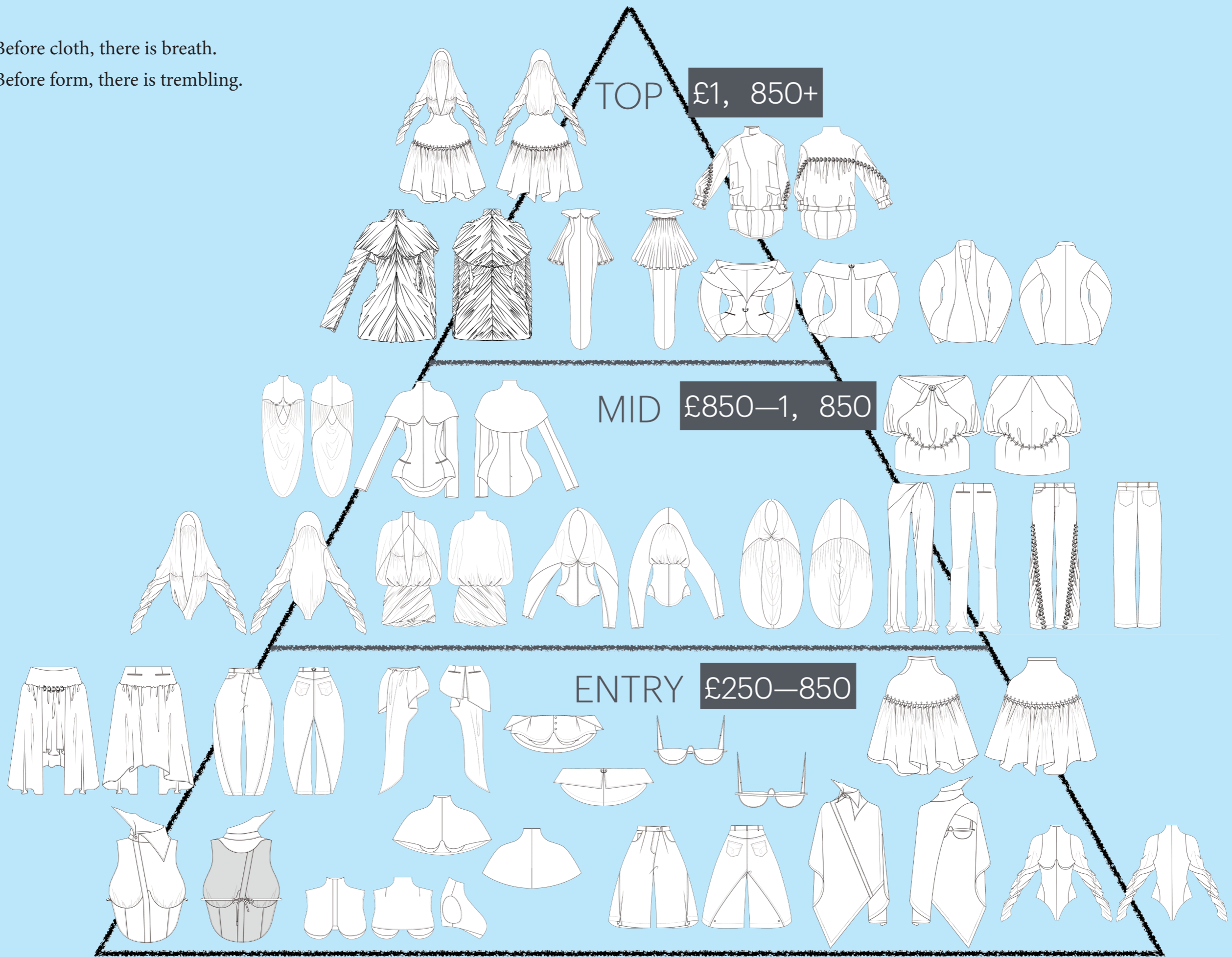
(Left) LOOK 5 Details & Toile Experiment.

Water teaches me collapse.
Heat teaches me return. 18



(Right) LOOK 5.

19 Before cloth, there is breath.
Before form, there is trembling.



“She is the one who walks through a crowded city with quiet grace — her clothes move like breath, not armour. She carries softness as strength, silence as statement.”

I carve space around the body
to let vulnerability move. **20**

Profile

Urban female, 24–32
Independent, creative, sensory-driven
Values comfort, emotional ease, and understated refinement

Needs

Soft structure/breathable protection/tactile calm
Clothing that supports focus, stabilises emotion, and moves with daily transitions

Motivations

Chooses pieces that feel grounding
Prefers subtle silhouettes over statement dressing
Seeks garments that hold space rather than demand attention

Brand Fit

Soft armour for modern city life
Designs that balance sensitivity with resilience
A wardrobe that feels like a quiet refuge



We are the brutally soft women.