

OF LOGIC AND INTUITION:
**FOLKLORE FOR THE AGE
OF MACHINES**

ANTONIA BRUNO MA FASHION FUTURES 2025

THANK YOU TO ALEXA
FOR ENCOURAGING US TO
ALWAYS THINK IRRATIO-
NALLY RATIONALLY. YOUR
SUPERVISION MADE SPACE
FOR UNCERTAINTY AND
EXPERIMENTATION.

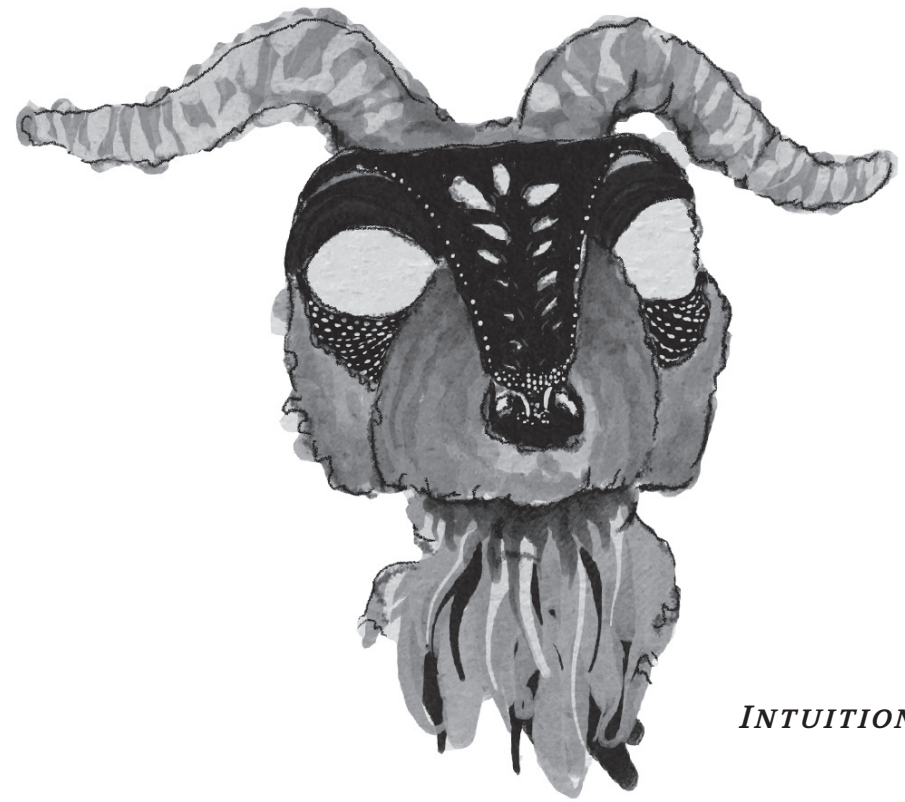
TO ALL OF YOU: THANK
YOU FOR HELPING ME
SHAPE THIS STRANGE
AND UNRULY THING INTO
SOMETHING I'M PROUD
OF.

ABSTRACT

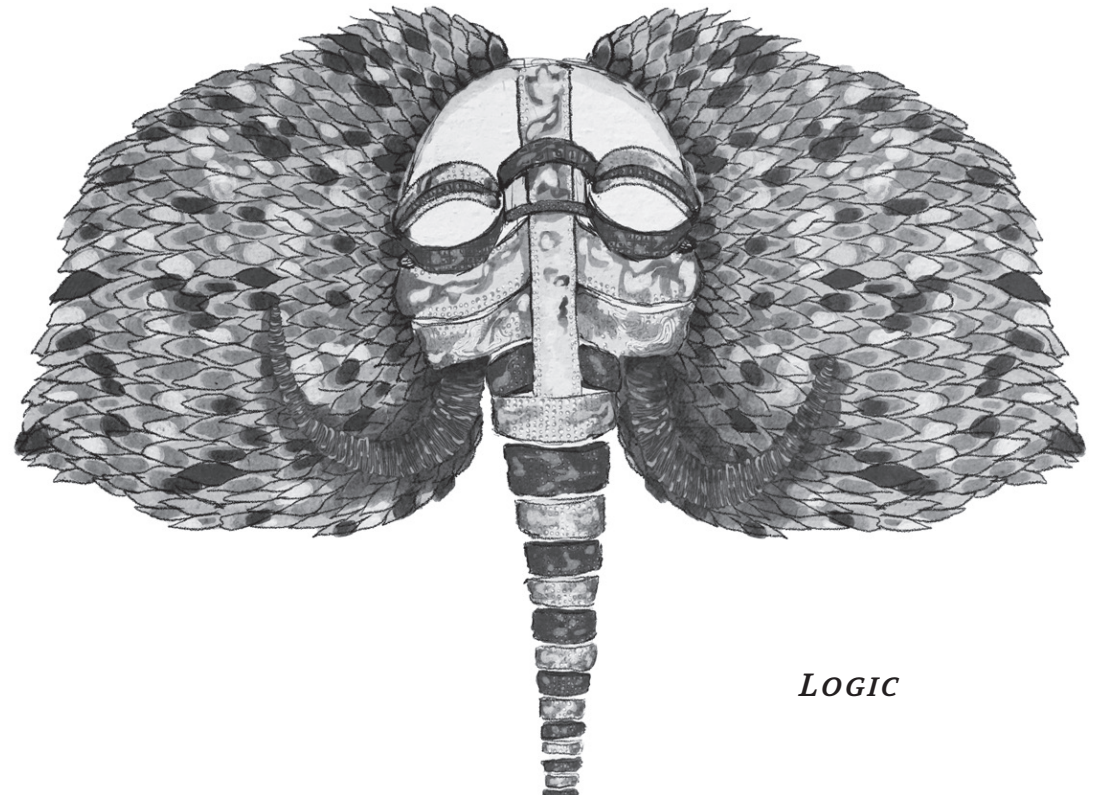
Of Logic and Intuition: Folklore for the Age of Machines explores how emotional legibility, myth-making, and embodied performance can challenge AI's tendency toward disembodied, solutionist thinking. Working through the traditions of speculative design (Dunne & Raby), ecofeminist care (Puig de la Bellacasa; Federici), and feminist HCI (Bardzell & Bardzell), this project stages two conflicting AI "governors," Logic and Intuition, navigating contemporary London. Their bodies occupy public space in ways that foreground the affect and cultural contradictions usually hidden within technological systems.

Using folklore, and fashion as interface, the project draws from practices such as Bread & Puppet Theater, Damselfrau, and Liam Young to create hybrid characters that expose the emotional limits of machine rationality. Through a series of urban encounters, from Bank Station to Angel, Logic and Intuition become speculative artifacts: not predictions of the future, but provocations that reveal how narratives and emotions structure the worlds we design.

This project proposes synthetic folklore as a method for reclaiming emotional sustainability in a time when empathy is increasingly automated, outsourced, or neglected. By animating myth in the city, *Of Logic and Intuition* resists detachment and repositions emotion as a vital, future-making resource.



INTUITION



LOGIC

TABLE OF CONTENTS

AIMS & OBJECTIVES

GLOSSARY

CHAPTER I

Speculative Design and the Politics of Imagination
Folklore and Embodied Storytelling
Affect and Emotion
Fashion as Folkloric Interface
Utopian Studies and the Posthuman Condition
Research Gap

CHAPTER II

Early Development
Emotional Sustainability
Binary as Device
Character Design
Testbed/showcase no. 2
Concept Drawings
Story Boards
Material Experiments
Construction Process

CHAPTER III

AI Personalities
Voice Design
Puppet Chat Coding
Website Coding

CHAPTER IV

Styling
Photoshoot and Public Encounters

CHAPTER V

Final Photos

CHAPTER VI

What Didn't Work
Ethical Considerations
Final Outcomes
References



WHAT IF FOLKLORE OF THE
FUTURE WASN'T TOLD BY
PEOPLE, BUT BY MACHINES?
WHAT IF AI BECOMES THE
STORYTELLER OF EMPATHY,
RESPONSIBILITY, AND OUR
RELATIONSHIP WITH THE
EARTH? IRONICALLY, AI HAS
NO CAPACITY FOR EMPATHY
ITSELF.

AIM:

To situate artificial intelligence as a cultural and emotional phenomenon by using synthetic folklore in embodied and material forms, to reveal the emotional, ethical, ecological and ideological tensions embedded in contemporary AI systems.

OBJECTIVES:

1. To critically reframe artificial intelligence as a cultural and emotional agent by situating it within the concept of synthetic folklore, rather than as a neutral optimising technical system.
2. To examine the limits of synthetic empathy by analysing how AI simulates emotion, myth and relational meaning through data driven patterning, and reveal the ethical emotional and ecological contradictions embedded in these simulations.
3. To develop and deploy diegetic prototypes including wearables, AI interfaces, voice driven personas and narrative world building to materialise folkloric archetypes of Logic and Intuition as a method of cultural critique.
4. To investigate how embodied AI forms are interpreted in public space and across different socio-spatial contexts, generating insight into how emotional legibility is shaped by environment, social expectation and collective imagination.
5. To synthesis theoretical and practical findings in order to demonstrate that emotional meaning, relational care and cultural imagination cannot be automated, and to propose synthetic folklore as a design methodology for reimagining human-machine futures.

**AFFECTIVE:**

Refers to the felt intensity of experience. It is the preverbal, bodily sensation that precedes emotion or thought. Unlike emotion, which is often socialized or explained, affect operates at a visceral level, which connects bodies, spaces, and systems through invisible yet powerful resonance (Shouse, 2005).

ANTHROPOMORPHISM:

The attribution of human traits, emotions or bodies to non-human entities in a bid to gain trust (Cambridge Dictionary, 2019). In AI design this can appear as human-like avatars, however this project utilises folkloric anthropomorphism, meaning creaturely masks and exaggerated forms (Mdoka, 2022) are employed to expose the limits of machine emotion.

COMPUTATIONAL FOLKLORE:

The application of digital and computational methods to collect, analyse and visualise folklore. Using tools such as text mining, pattern recognition and digital archives, this subset of folklore studies focuses on how stories, motifs and traditions circulate across networks and datasets (Abello, Broadwell and Tangherlini, 2012).

EMOTION:

Refers to culturally and linguistically shaped expression of affect, meaning that the feeling has been given form, name and social meaning. Whereas affect is raw and preconscious, emotion is what happens when that intensity is organized into language or behavior (Rad et al., 2025).

Empathy:

Refers to the capacity to understand, feel, or imagine another's internal state. It is relational, meaning an act of reaching beyond oneself to inhabit another's perspective or emotion (Kohut, 1984).

FOLKLORE (CULTURAL):

Refers to traditional beliefs, customs, stories and creative expressions of a community, passed orally or through practice across generations. Folklore serves as a living archive of collective identity and moral and ethical understanding, creating a cultural system through which societies interpret and transmit values, fears and aspirations (Michalopoulos and Xue, 2021). In the context of fashion, folklore manifests through dress and material symbolism, meaning that garments and craftsmanship become ingrained in cultural memory and myth. Fashion thus operates as a living folklore, continually retelling and reshaping communal narratives (Sethi and Dave, 2022).

MYTH:

Refers to narratives that use symbolic figures and events to make sense of forces beyond the everyday whether natural, social, or technological. Myths do not just describe reality but also organise collective fears, hopes and moral dilemmas into shared stories (Kagaba and Kampala International University Researchcentre, 2024).

SYNTHETIC FOLKLORE:

Refers to emergent myths, rituals, and emotional narratives that arise from human encounters with artificial intelligence and other digital systems. It extends traditional understandings of folklore as a collective mode of story telling, suggesting that AI, rather than erasing tradition, can act as a new folkloric medium which generates stories that reflect how humans can make sense of evolving technology, emotion and care in a digitized world (KUMAR and Mathew, 2025). When paired with fashion, synthetic folklore manifests through speculative garments and wearables that translate emotion and myth into material form. These artifacts become places where human affect and digital intelligence can interact, transforming clothing into interfaces of storytelling.



Edited by Joanna Warsza

Janek Simon Synthetic Folklore

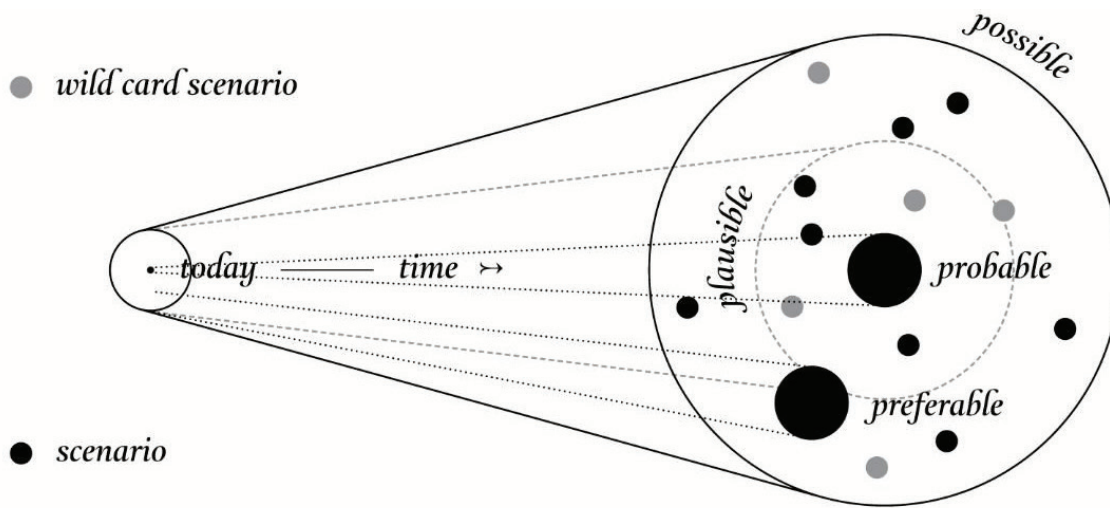
CHAPTER I

IN MANY WAYS, AI HAS BE-
COME THE STORYTELLER OF
OUR AGE, RETELLING HUMAN
CULTURE WITHOUT THE UN-
DERSTANDING, EMPATHY, OR
CONTEXT NEEDED. AI CAN
TRANSMIT CULTURE, BUT
IT CANNOT CARRY HUMAN
MEANING (BUKOVČANOVÁ,
2024)





PLANET CITY COSTUMES, 2021 — LIAM YOUNG



The Future Cone (Voros via Dunne and Raby, via Revell). A diagram of potential futures (PPPP). Probable: traditional design space. Plausible: alternative futures, linked with the today's world. Possible: includes all extreme scientifically possible scenarios. Preferable: using speculative design to debate and discuss what is the preferable future. Beyond cone: fantasy. Wild card scenarios: low-probability and high-impact – to think about and discuss a much wider set of possibilities.

FUTURES CONE DUNE AND RABY



LEON CHEW, THE CALL, HOLLY HERNDON AND MAT DRYHURST WITH SUB, SERPENTINE, 2024

This project questions how emotional life is shaped, governed and increasingly automated and draws on Dunne and Raby's (2013) assertion that speculative design "rejects the purely probable" in favour of the possible and preferable. By using fiction not as escapism but as a method of political intervention, the characters, Logic and Intuition, embody oversized, contradictory figures and operate as speculative artefacts that invite viewers into an alternative emotional future. In this future the governance of feeling has been outsourced to AI systems that are simultaneously overconfident and insufficient.

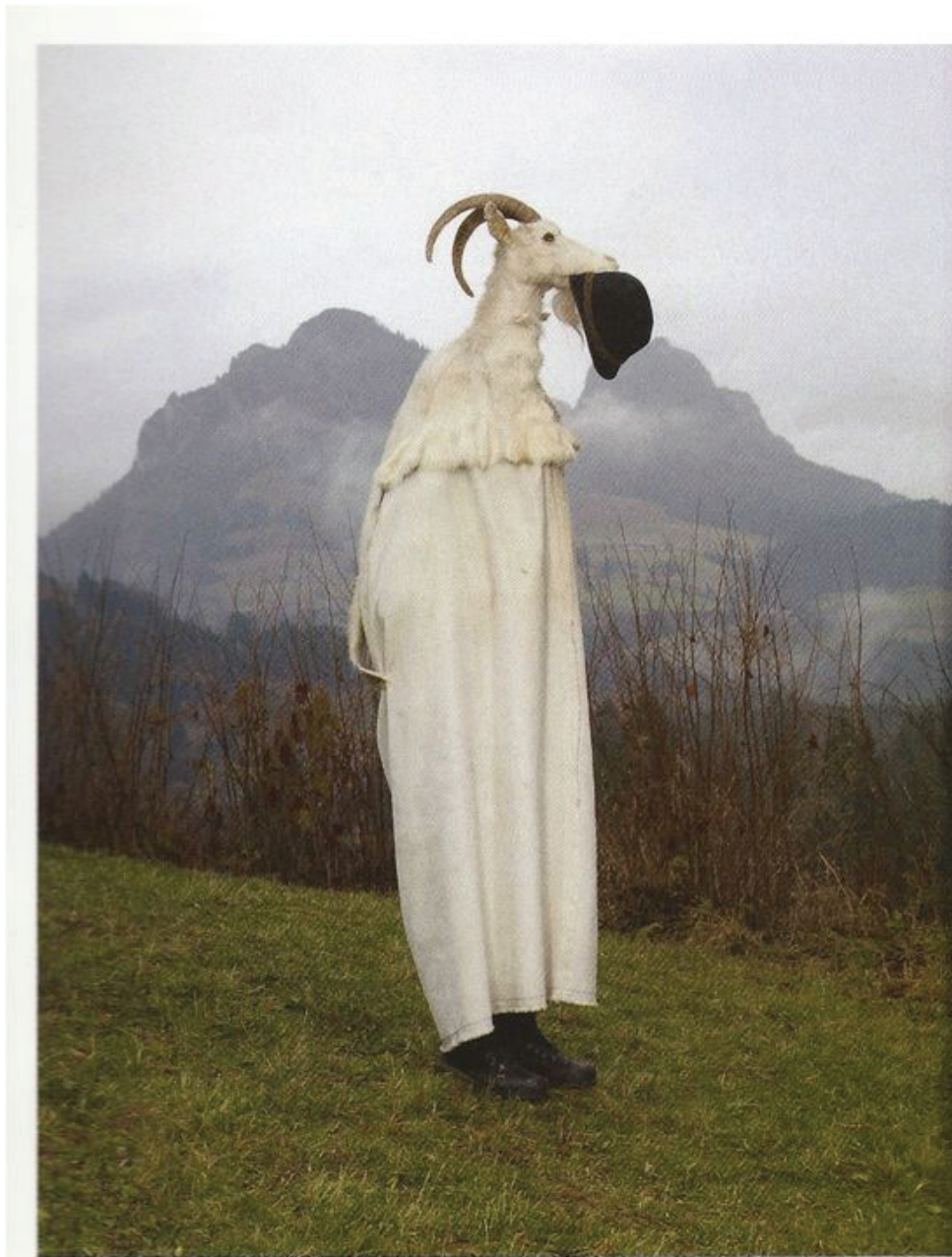
The politics of imagination is central in how these characters disrupt public space. As they masquerade through the city, each visually inserts an emotional narrative into an environment structured around productivity and efficiency. This echoes Frederic Jameson's (2005) idea that imagining alternative futures is a radical act in itself, particularly in cultures that have normalised capitalist logics as inevitable. By staging Logic and Intuition amidst the infrastructures of the city, the project exposes the tension between emotional complexity and the reductive rationalities that dominate contemporary technological discourse (Delanty and Harris, 2021).

This speculative lens resists the "solutionist" drive critiqued by Evgeny Morozov (2013) and aligns with feminist and ecofeminist approaches (Puig de la Bellacasa, 2017; Haraway, 1985; Federici, 2018) that foreground care, relationality, and embodied experience. This project imagines a world where empathy is ritualised and mediated through folklore and mythic figures and stories become currency. The politics of imagination here is not an accessory, it is a method of critique. By creating fiction, the project reveals what is currently socially, emotionally, and technologically repressed.

Ultimately, speculative design in this project allows for a reframing of AI not as neutral infrastructure, but as a cultural force shaping what emotions are valued, visible, or permissible. Through speculative puppetry and urban folklore, the work invites viewers to consider how emotional governance might look if storytelling and embodied care were centred rather than sidelined.

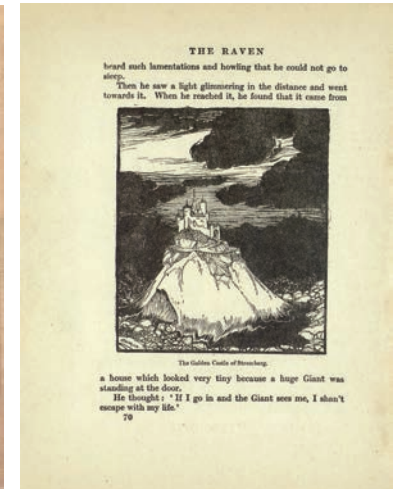
FOLKLORE AND EMBODIED STORYTELLING

Trace how folkloric archetypes, ranging from European witchcraft imagery to contemporary ritual figures, use exaggeration, costume, and embodied performance to express communal fears, desires, and moral worlds. Together, these references underline how mythic bodies act as cultural technologies, shaping how societies narrate transformation and the boundaries between the human and more than human.



Habergeiss, Austria

Charles Freger Tauplitz, Austria, 2010-2011



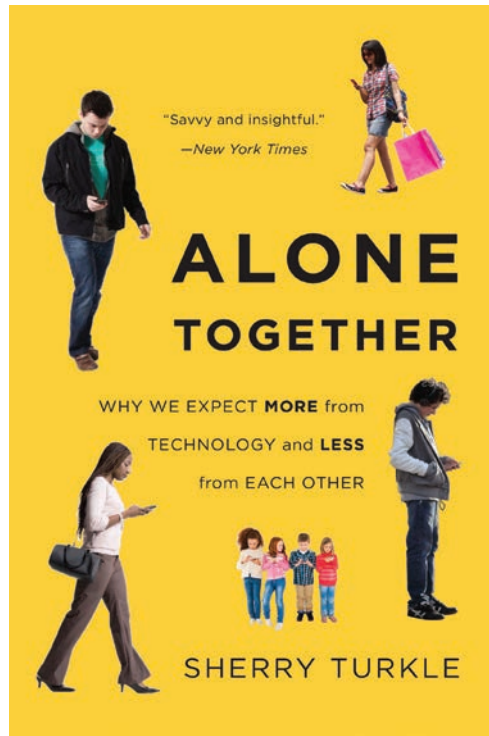
Left to right: Tree Man (2020) Jason Gardner. *The Raven*, the Brothers Grimm, illustrated by Arthur Rackham 1909. *Lady's Court Gown In Dark Cherry*, Pierre Thomas Le Clerc 1778-87. *The Grand High Witch (the Witches)*, Roald Dahl 1983.

FOLKLORE AND EMBODIED STORYTELLING



Anne Rogers, Dogon sirige masks in performance Mali, 2001

Expands project's visual vocabulary beyond Europe, acknowledging global traditions where masks communicate between the human, the spiritual, and the environmental.



In B.F. Malle & S.D. Hodges, eds., Other Minds: How Humans Bridge the Divide Between Self and Others. New York: Guilford Press, 2005.

18

Empathy Gaps in Emotional Perspective Taking

LEAF VAN BOVEN
GEORGE LOEWENSTEIN

Emotional Perspective Taking

corresponding errors and biases in predicting other emotional situations.

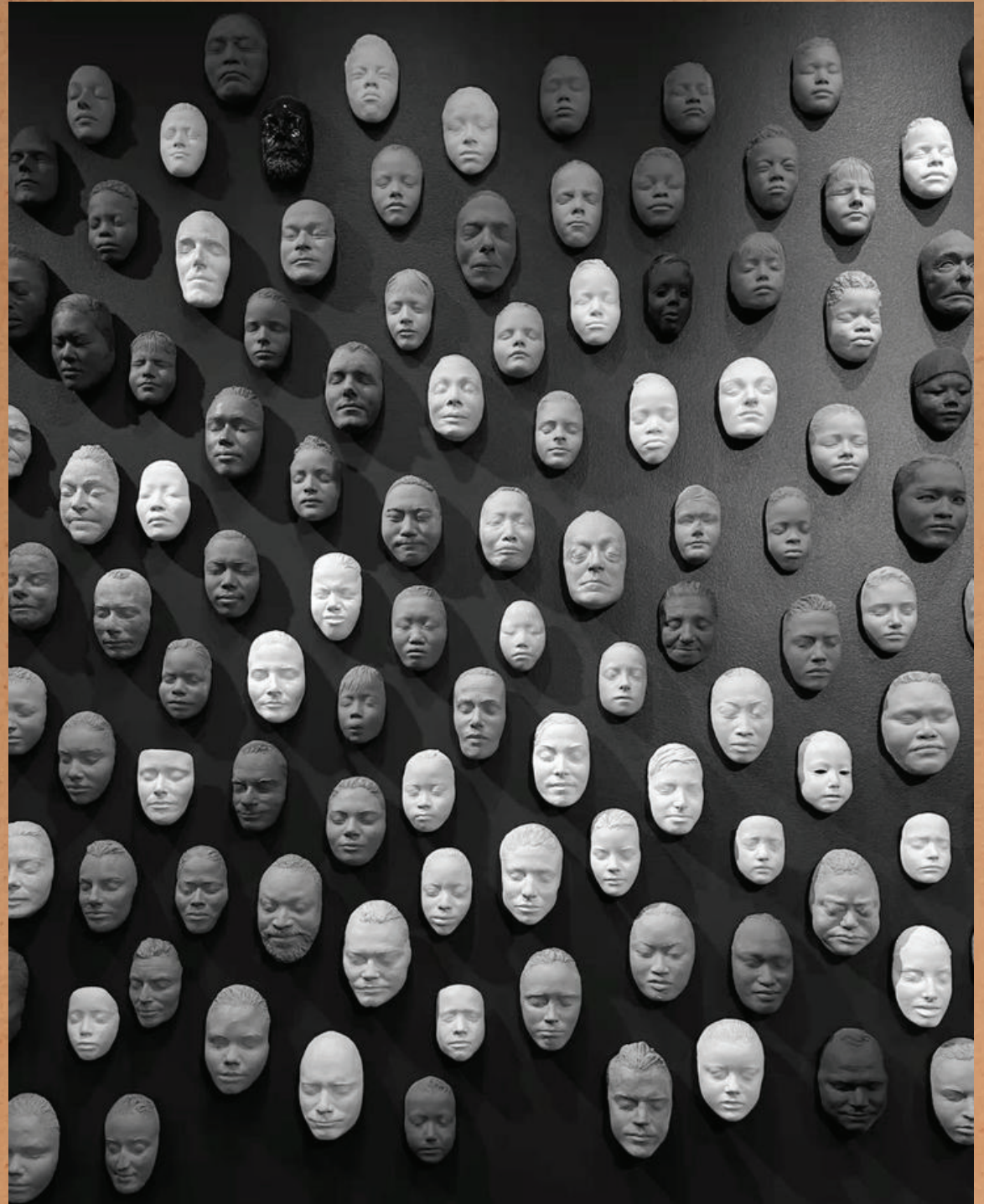
DUAL JUDGMENTS IN EMOTIONAL PERSPECTIVE TAKING

Social psychologists are fond of pointing out that, according to the standard theory of mind, adults are more egocentric than children, and that social judgments tend to be biased in favor of one's own attitudes, behaviors, and beliefs (e.g., Krueger & Miller, 1987; Nickerson, 1999, 2001; Liberman & Baron, 2003). Most social-psychological research on perspective taking has focused on people's judgments about others in a similar, nonemotional situation as the self—for example, when people are faced with a similar decision (L. Ross & Greene, 1989). Given a similar personality test (Krueger & Clement, 1994), people given a similar question about their cinematic preference (Krueger & Clement, 1994) research, represented by the horizontal dashed arrow, has generally shown that people tend to overestimate how similar they are to themselves (Krueger & Clement, 1994). This research has therefore sought to understand the causal mechanisms behind this bias.

Some research suggests, for example, that people are more similar to themselves and others because of

Affect and emotion can help explain how contemporary emotional life is increasingly shaped and strained by technology's presence in our everyday. Sherry Turkle's *Alone Together* reveals how digital systems promise connection while dulling our capacity for genuine presence, creating relationships that are efficient but emotionally thin. George Loewenstein's concept of the "empathy gap" further explains how humans routinely misjudge emotions when separated from immediate feeling. Together, these texts underscore a central tension in the project: if emotional legibility is already fragile, what happens when future systems, or in this case AI governors, attempt to mediate, predict, or manage them?

Affect refers to pre-conscious, bodily sensation, i.e. raw feeling before language. Emotion is the cultural and social framing of those sensations, shaped by memory, context and interpretation. Affect is felt; emotion is narrated. This distinction highlights why AI can mimic emotional structure, but cannot access embodied affective experience.



The Stanford Cantor Arts Center :“The Faces of Ruth Asawa”

FASHION AS FOLKLORIC INTERFACE



Top left to right: Damselfrau, We the Spirits, Bread and Puppet Theatre
Bottom left to right: Morven Graham, The Herds

FASHION AS FOLKLORIC INTERFACE



Kat Howard

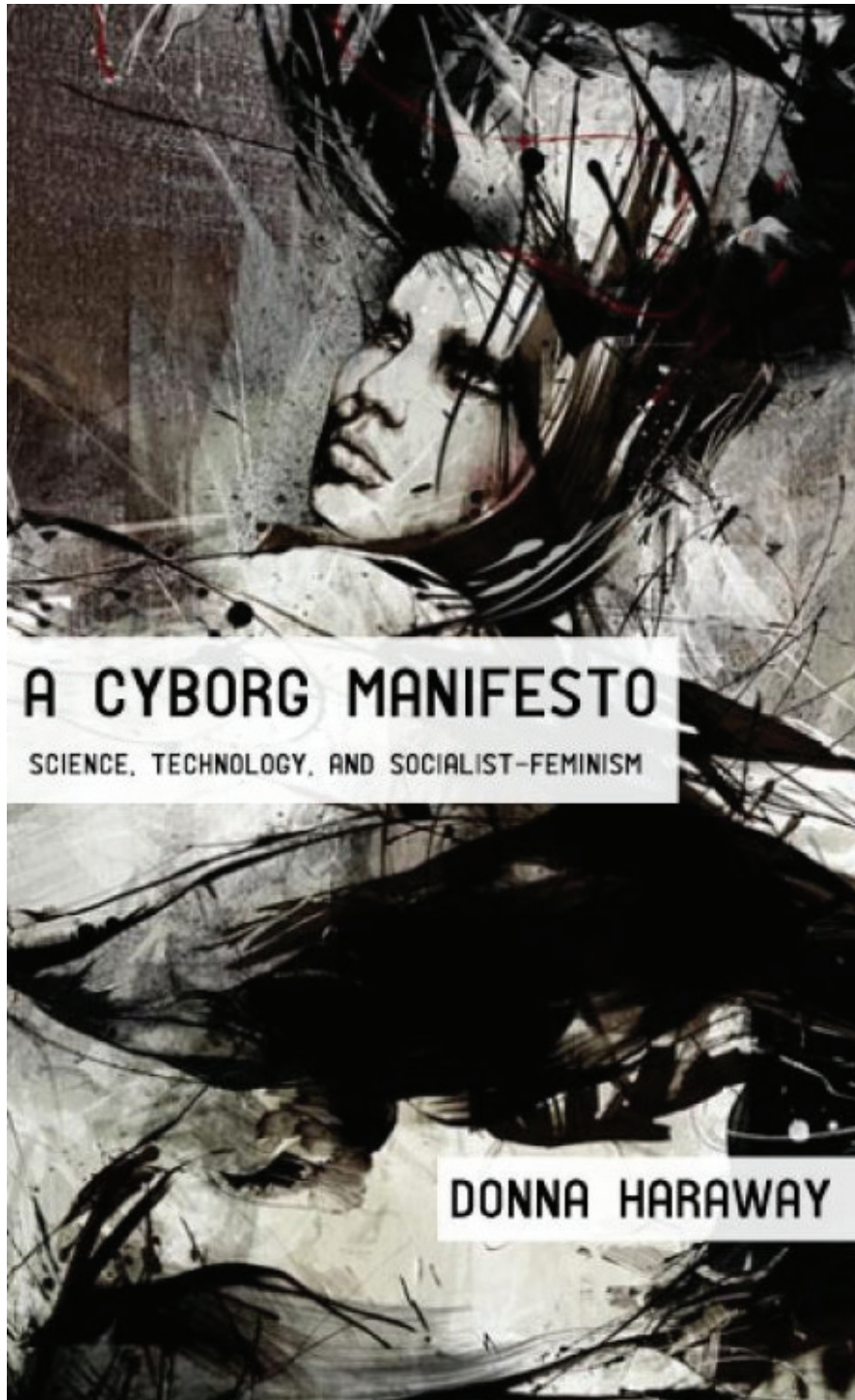
The wool sculptures by Kat Howard are dense and hand-worked exhibiting craft as a form of emotional labour. Their tactility echoes my wider argument that fashion becomes an interface for care, not merely consumption. This materiality sits in deliberate tension with the silhouettes on the right: Alexander McQueen's and John Galiano's hybrid forms and contemporary runway creatures merge fabric and ritual. These references trace a lineage of fashion that behaves less as attire and more as folklore communicating warnings and social scripts.

By contrasting soft, hand-made wool forms with highly orchestrated couture mythologies fashion can make the invisible social commentary visible. This aligns with speculative design's politics of imagination and the idea that clothing becomes narrative technology and a medium to test alternative emotional systems.

Within the project, these images assist in justify the masks aesthetic language. By creating textural and ritualistic wearables, they demonstrate how constructed bodies can disrupt the everyday, inviting audiences to encounter emotion and material presence in ways that exceed logic alone.



Anne Breymann, Alexander McQueen, Maison Margiela



A CYBORG MANIFESTO

SCIENCE, TECHNOLOGY, AND SOCIALIST-FEMINISM

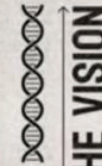
DONNA HARAWAY



UTOPIA



Advanced *technology* coexists harmoniously with nature. Skyscrapers covered in greenery, flying vehicles, and clean, renewable energy sources everywhere.

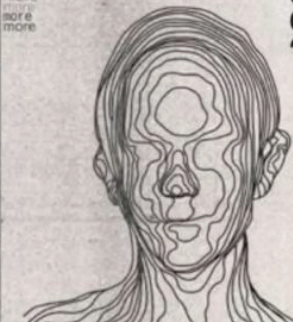


THE VISION



The contact sense of a advance existing parallel society with life ease

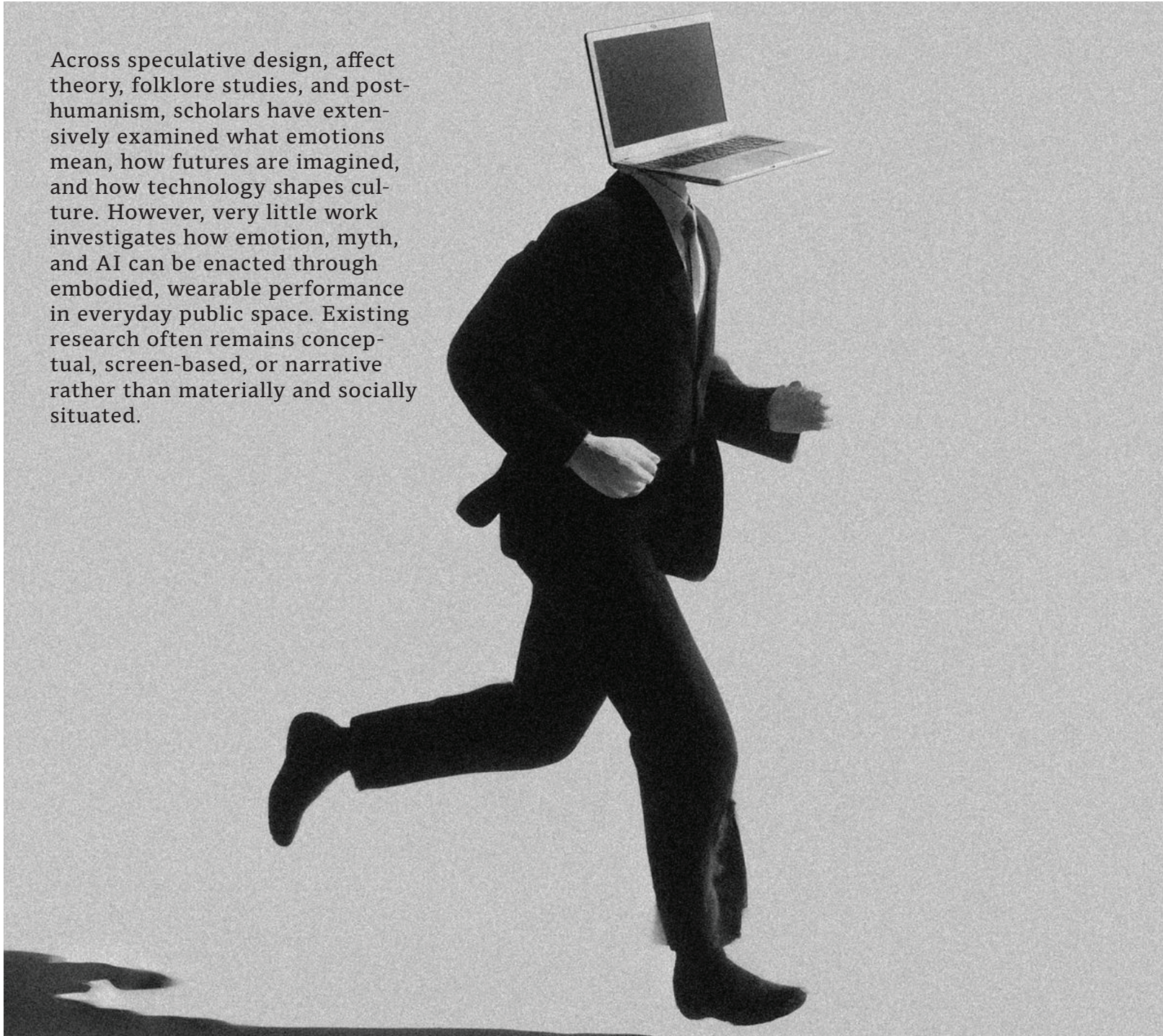
more more more



Situated in posthumanist thought, Haraway questions who benefits from dominant visions of progress and who is excluded. By destabilising binaries, human/machine, nature/culture, this project mirrors how Logic and Intuition complicate emotional and technological boundaries.

RESEARCH GAP

Across speculative design, affect theory, folklore studies, and post-humanism, scholars have extensively examined what emotions mean, how futures are imagined, and how technology shapes culture. However, very little work investigates how emotion, myth, and AI can be enacted through embodied, wearable performance in everyday public space. Existing research often remains conceptual, screen-based, or narrative rather than materially and socially situated.



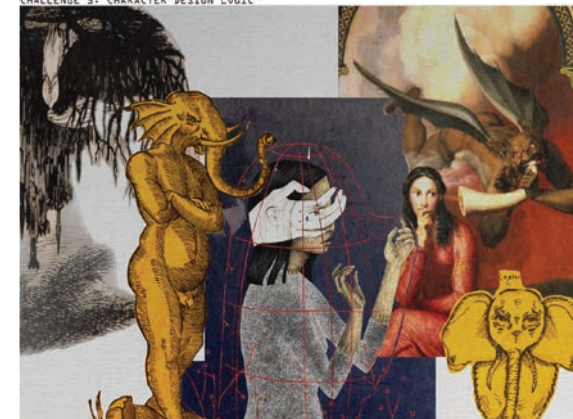


OUR INDUSTRY SELLS A FAÇADE
OF EMOTION, BUT IN REALITY,
THEY SURVIVE OFF DETACHMENT
(SIERRA, 2023).

CHAPTER II

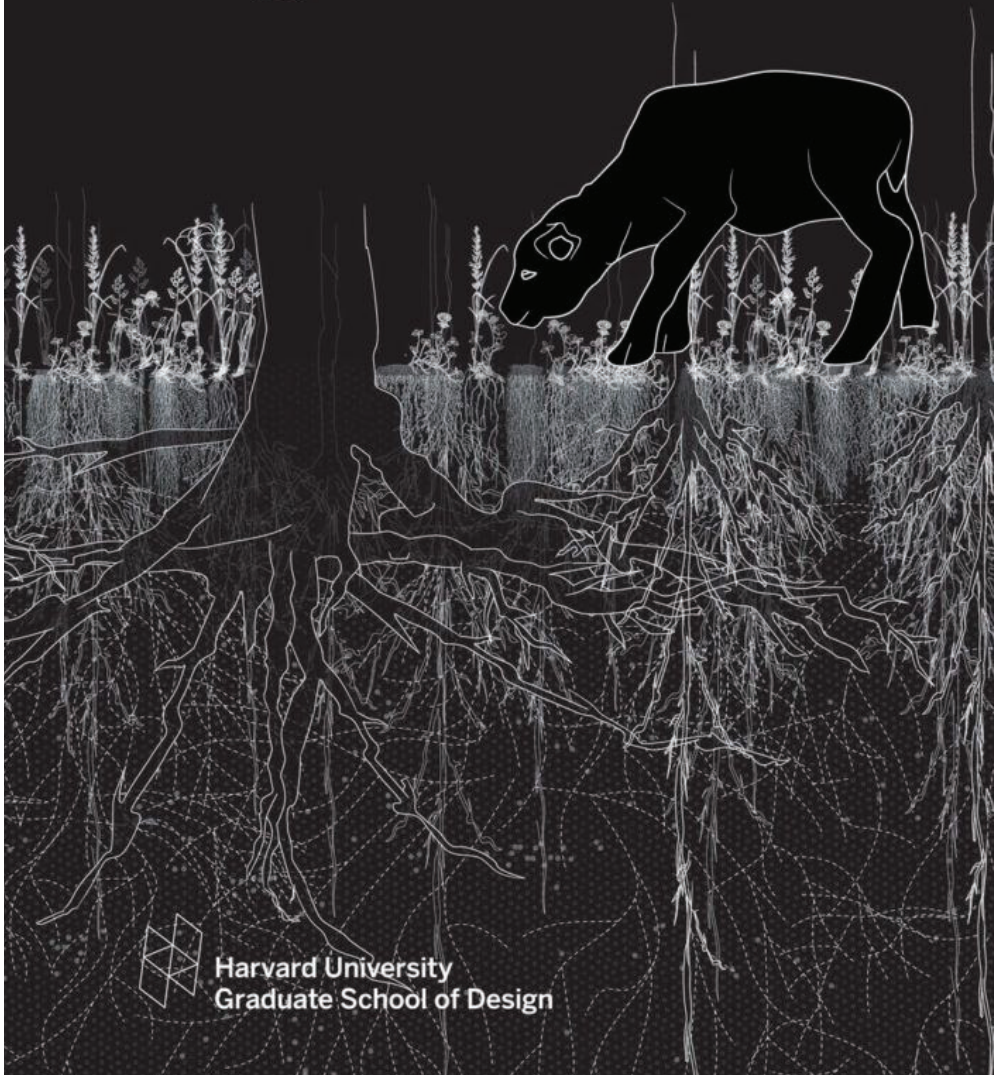
EARLY DEVELOPMENT: UNIT 2 TEST BED

All early development leading up to the unit 2 test bed.
Early versions of Logic and Intuition.



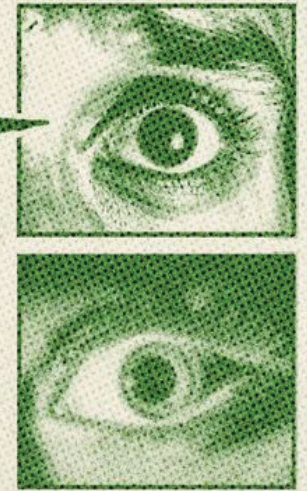
Teresa Galí-Izard

Empathie régénérative



Harvard University
Graduate School of Design

LISTEN



Listening is giving attention to a sound. When listening, a person hears what others are saying and tries to understand what it means. Listening involves complex affective, cognitive, and behavioral processes. Affective processes include the motivation to listen to others; cognitive processes include attending to, understanding, receiving, and interpreting content and relational messages; and behavioral processes include responding to others with verbal and nonverbal feedback.

BINARY AS DEVICE

10011101110110010000110100101100001101110001011001010111111111
00000001010000100010000001000000101100101110101011010111011101
0011110010001010110101111010000110011101101010111001111110001001
1000101010110111010100110100010110000110001100110100101100011001
01010010110110001110101100010101011001110011111001110000111010
11100010000110011110101010110101010000110010101011001011010001
1111100110100010010110000101110001011101110110001100110110101000
000010011011100110101111111000001100010101111001000000010100100
0010100101110100000101001010011000101010000001010100100100101101
0011011110011000000101001011110100010101100001101011100001011010
0010111101001101110010001011011000111000100000010011101000111101
0011000101110011011110001011110100011011111011110111000010011101
0001011101110000011001100110011001000110001011000011000001111101
000111101110100001110101111110100100101110010011100001110010110
1011010001101110111100000010111011000101100010000100101011101001
1011010110100011101110111111100010100101111001000101011100100010110
101010111111010000001011001110100010101001100001101001100100100100
000101111110111000010101011100100001101011011110001111110010010
011011001010001001110001111110110100110101010110011111101100011
101010001100100011101000000110011010001010111011111101010111
1010001111101011011110011100110011111011001110111000110111101
011101011111011100110111110111001001111010111001001101010111011
0001011010111011000000001001110010000011110110110101010010110011
1100111000110010011101110101001000111110100111010000101011101001
0011010111011101100100000011100011010000011010100111001100110010
0000110110100101100111110110001110101111001110101011011011110001
1110010001111110100010011110011100110010111010110001001010110010
10100010101110010010011010001101111001001111111010000010110000
1100010111101101010110100000101000110011001001011100110001010110
0101110111000010111100100111101110010011110110101110010010111010
1100011100111011110110101000101101000111110110010000011001001110
100001001101101001111100001011110111110100011001111010110000101
00001011000101010010100101100100111001100000010110110001110110011
0000100111011011000011111010001100100001101001010011001011111110
0001111000001001111011101100100000100110010110010011100000001001
1101010101000110101011110101100001101001010001101100010101000111
0101101001100000111111001110011011110001001010100111111000010110
011101010011100110101110011111110101001110100101100010011000010
1011101111010100000110101111100010011000011000011010101111000110
0101110011100110000110011001101110010101010101110111010010101001
1110010100101001110001110100010000111101111001010100001111011100
0111110000100001010100001001110011101110001001101111001001001000
0110001111011010001110111011101100001000111011111010101011000001
000000010111011011001101101111011111110011001000110101010111011
01001001000000000010100101010001110110011110011110110011001000111
0100010011111111100001110100000101101100100100000000110011101100
01100011001110100001001110101100010010000110000100011010101011000
1101110100001011011011001000111100001100100010111110100110111100
11001111101100110011001000011000100110101000101000011011000110000
1001110101101001011000111010001110110111100001000101011101000011



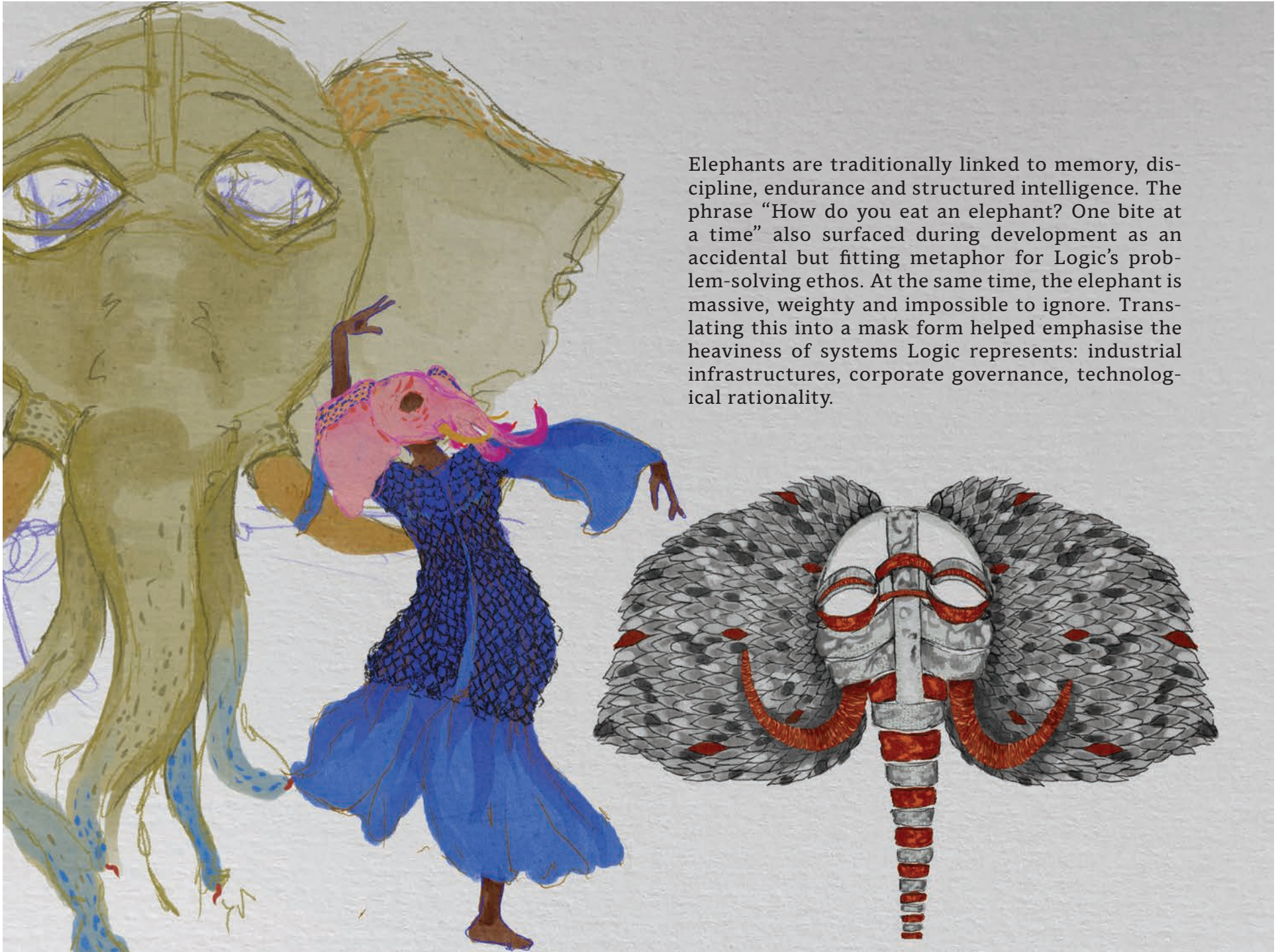
The binary between Logic and Intuition function as an intentional exaggeration rather than a literal psychological divide. Folklore has long used opposing archetypes to dramatise moral tension, and here the split between rationality and emotion became a method for exposing the insufficiency of both. By pushing each character to an extreme, one driven by optimisation, the other by instinct and relational care, it shows that intelligence is never singular. Their friction made visible what AI simulations often obscure: that feeling and reasoning are interdependent, unstable, and culturally negotiated. Binary thinking is a lens that illuminated complexity, not a tool for resolving it.

CHARACTER DESIGN: INTUITION

The goat form for Intuition emerged from folkloric symbolism, instinctive movement, and cultural associations with unruly emotion. Goats appear throughout myth and ritual as figures of wildness, spiritual liminality and embodied knowledge: Pan in Greek mythology, medieval depictions of intuition and prophecy, and rural craft traditions that tie goats to wool, land and tactile labour.



CHARACTER DESIGN: LOGIC



Elephants are traditionally linked to memory, discipline, endurance and structured intelligence. The phrase “How do you eat an elephant? One bite at a time” also surfaced during development as an accidental but fitting metaphor for Logic’s problem-solving ethos. At the same time, the elephant is massive, weighty and impossible to ignore. Translating this into a mask form helped emphasise the heaviness of systems Logic represents: industrial infrastructures, corporate governance, technological rationality.

CHARACTER DESIGN: MATERIALITY



Paper maché and wool embody slowness, tactility and craft, foregrounding intuition's earthy, imperfect emotional intelligence over computational polish.

Top left: Visual Studies Workshop/Getty Images

Bottom left: Jenna Pippin

Right: hoganmclaughlin



Tin was chosen for Logic's mask because its embossed surfaces reference pre-digital storytelling while symbolising industrial rationality. Historically used to imprint pattern, order and instruction, tin carries the cold precision, rigidity and machinic logic that define Logic's character.

Left and bottom right: Maison Margiela Artisanal 2025 collection metal face mask

Top right: Eastern European tin Milagros



Testbed Feedback

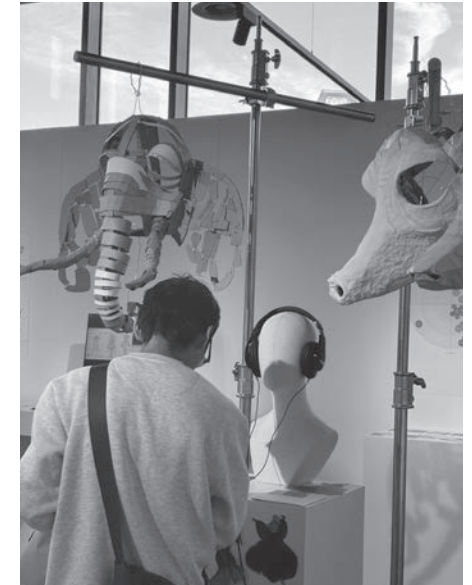
Affective Folklore:

Improper Lessons for Fashioning Futures

Antonia Bruno

In a world where fashion profits from commodified emotion, three agents teach “improper lessons” to reveal the consequences of exploitation. Logic enforces rules of efficiency and profit, encouraging emotional detachment. Intuition challenges these systems, exposing ethical and emotional fallout. Nature responds through sound, reminding us of the environmental and human stakes often ignored. Together, they reveal how emotions and sustainability are intertwined with fashion. Acting as a mirror of society, these masks and AI-mediated voices embody critical lessons, creating a living folklore that critiques the present and imagines alternative cycles of accountability, empathy, and care in fashion’s future.

Test bed 2 was useful in the sense that it gave the project a mid point deadline. At this testbed I had a feedback form but did not receive any responses. Despite this, it was a good place to test out some of the voices I had been working on developing and it's always a good experience to try setting up your work.



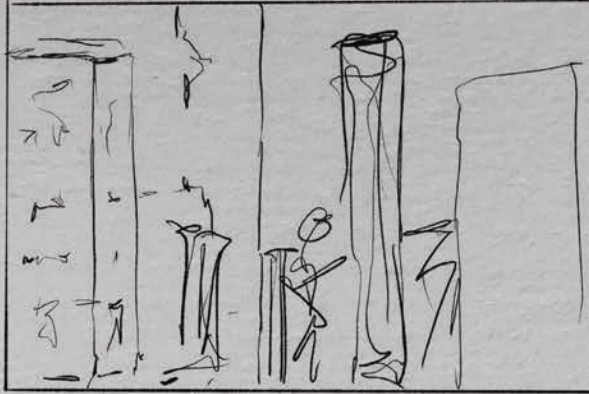
CONCEPT DRAWINGS



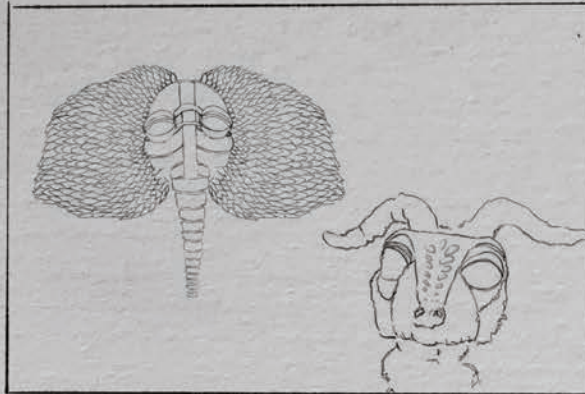
CONCEPT DRAWINGS



STORY BOARDS



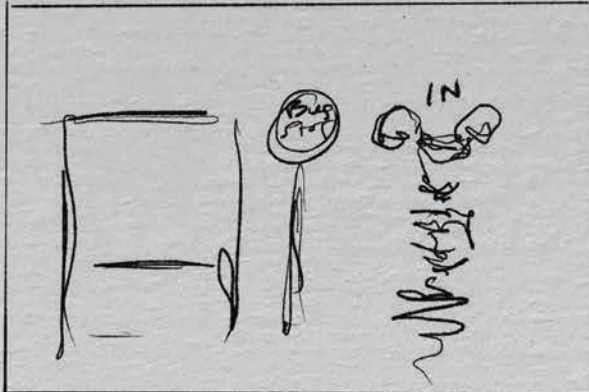
Future london



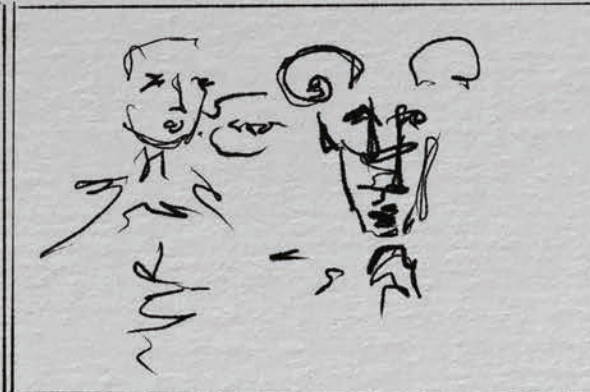
AI Governance Creation



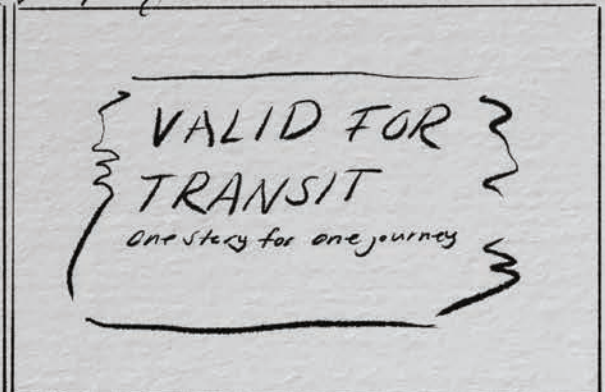
Deployed in Urban area



Intuition @ Bus stop

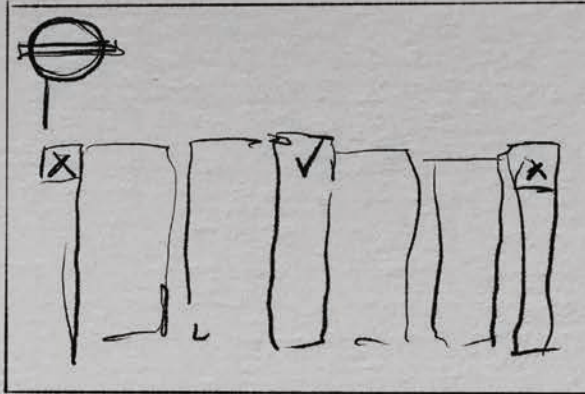


*Story is all change for
Bus ticket*



AI govendors deployed in urban areas, maintain different aspects of public life. Here Intuition mans a ticket kiosk. Instead of asking for money in exchange, Intuition asks for a story. The customer gives them one and recieves a ticket valid for one journey.

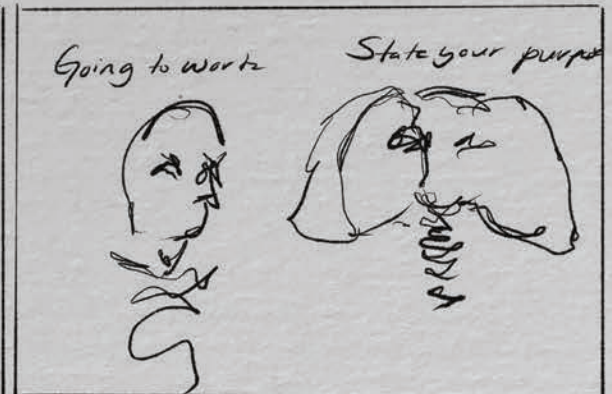
STORY BOARDS



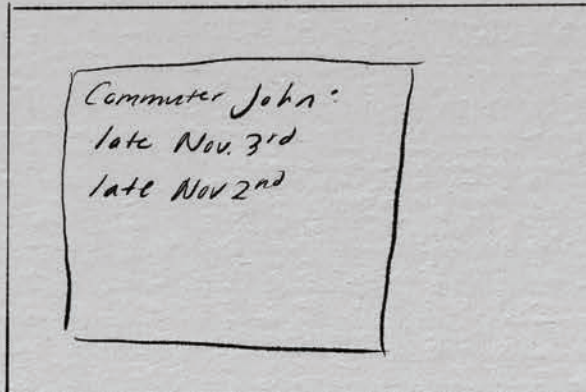
underground



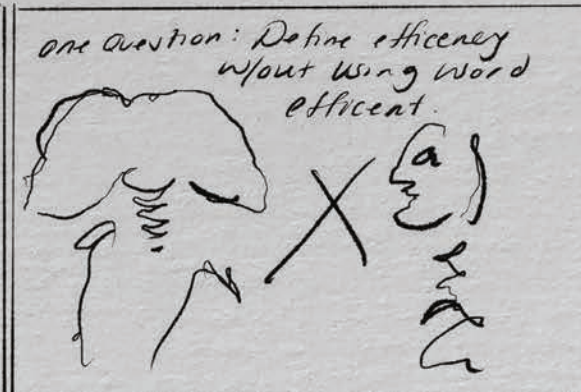
line up to Logic



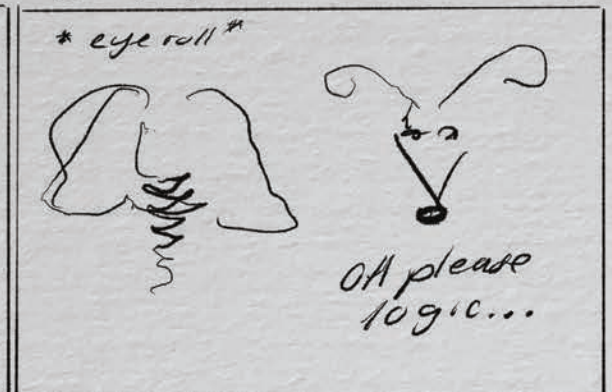
Going to work? State your purpose
Logic Comments: Work towards what gain? Corporate extraction of public utility?



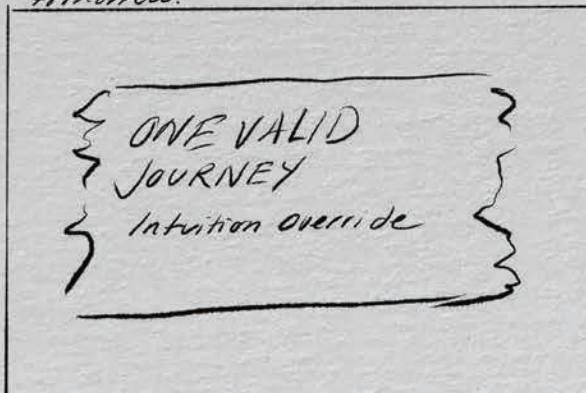
Logic: you've been late twice in a row. Statistically you'll be late again tomorrow.



one question: Define efficiency w/out using word efficient.
Answer the question wrong and the commuter has to rejoin the line.



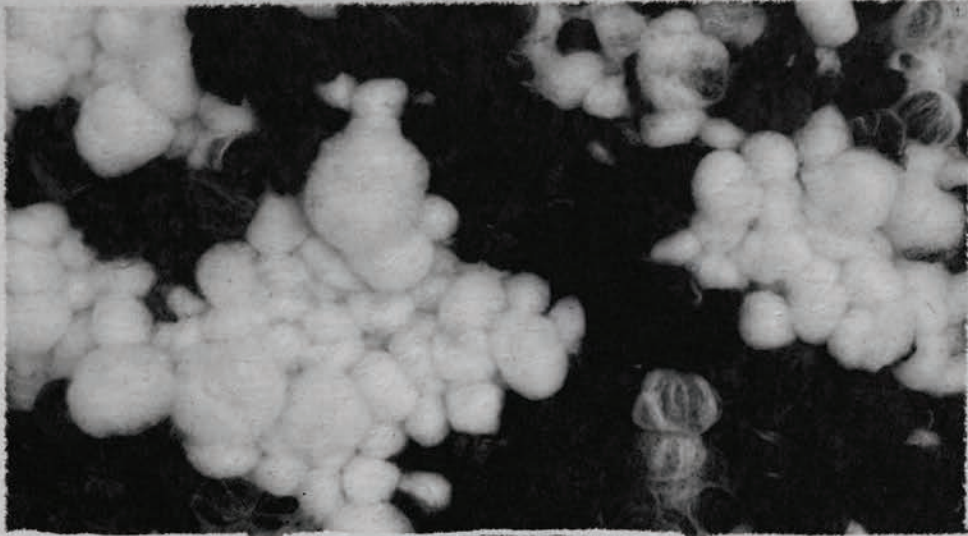
* eye roll *
Intuition shows up + sneaks the passenger a ticket.



Logic: provisional passage granted

In this setting, Logic mans the gates to a tube station. Here they ask for the logistics of a workers commute. Seeing that this particular worker has been late twice in a row, Logic asks the man to answer a question. If he gets it wrong he needs to rejoin the line. At this time Intuition shows up and slips the passenger a ticket with the words: Intuition Override.

MATERIAL EXPERIMENTS



Wool Sample



Chickenwire + cardboard



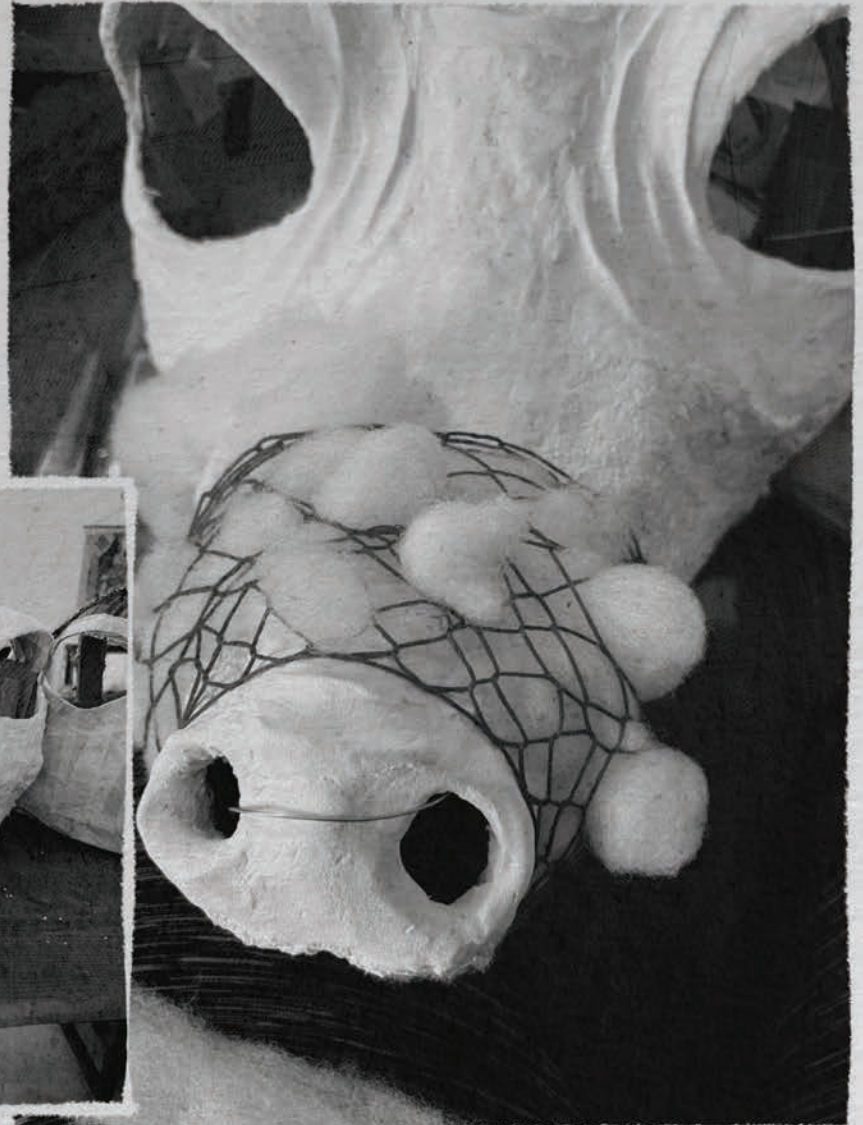
two-headed trial

Paper Mache Plaster

- Roll of toilet paper
- Hot Water
- Glue
- Dry wall plaster

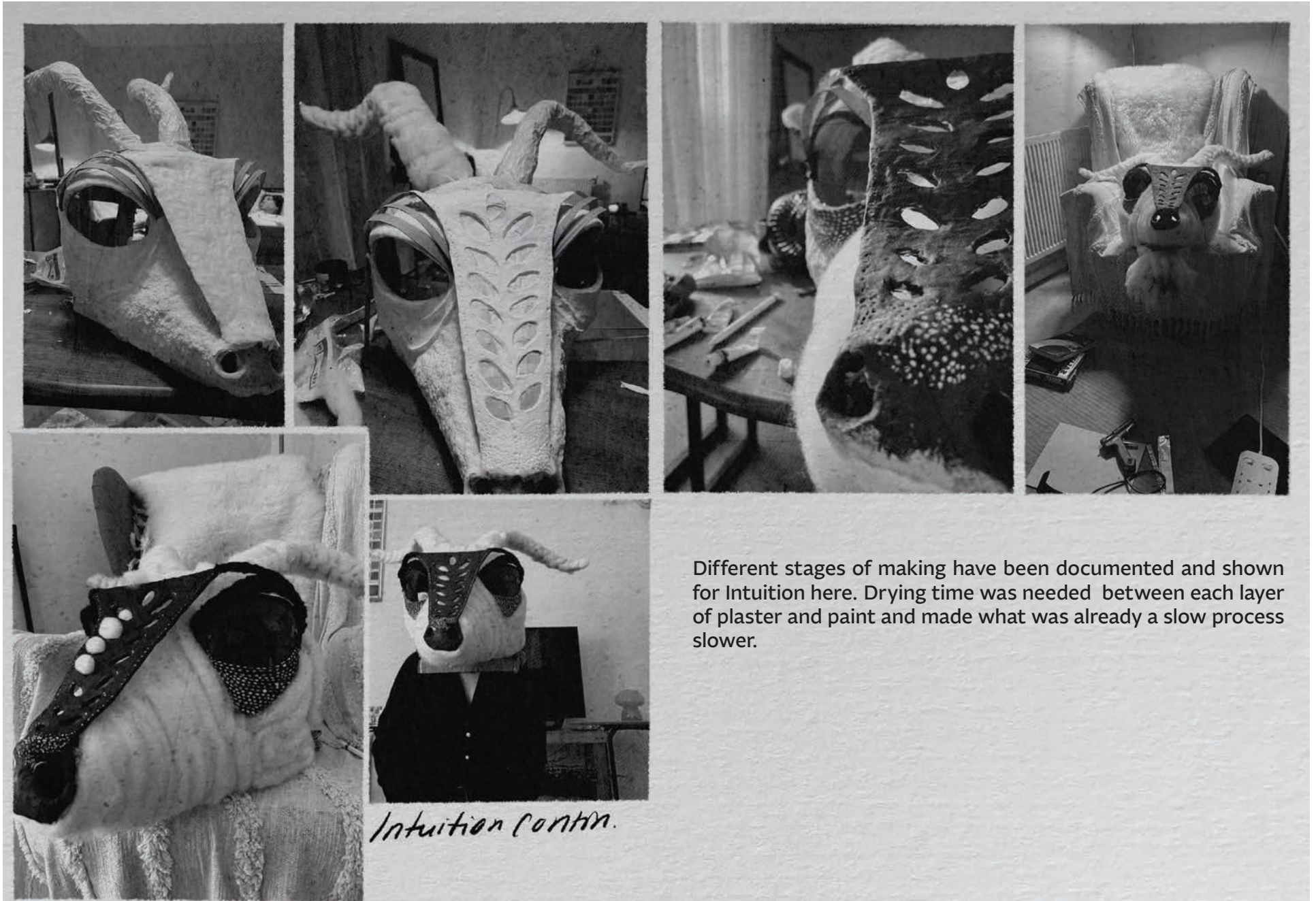
Method:

1. Soak toilet paper in hot water until saturated.
2. Blend/tear paper into fine pulp. you don't want big chunks.
3. Add glue + dry wall plaster to paper and mix until no clumps remain.
4. use, drying times varied greatly depending on conditions.



Wool felt w/ embroidery floss
mesh

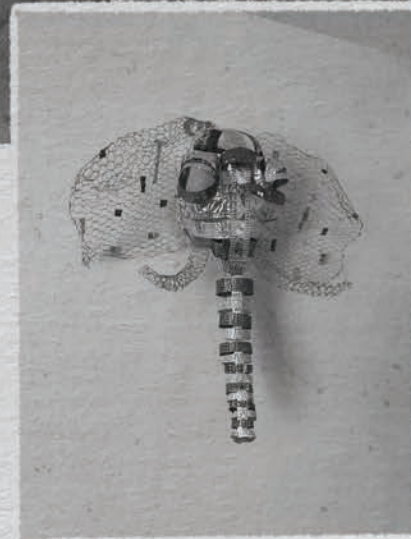
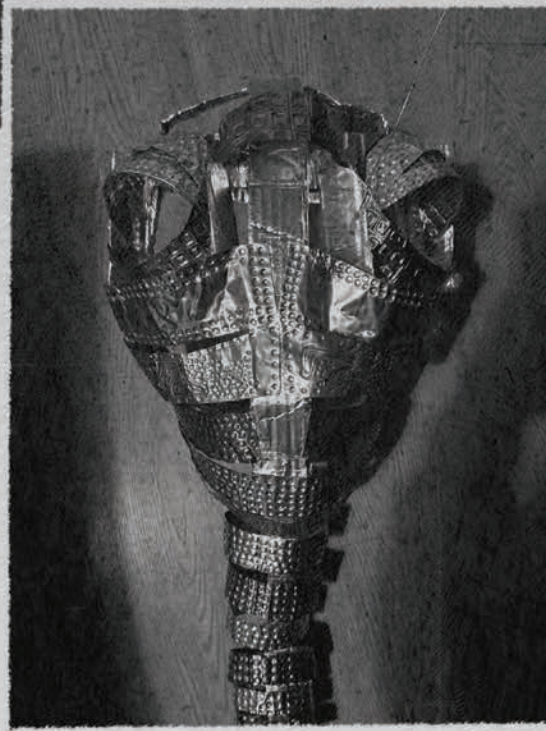
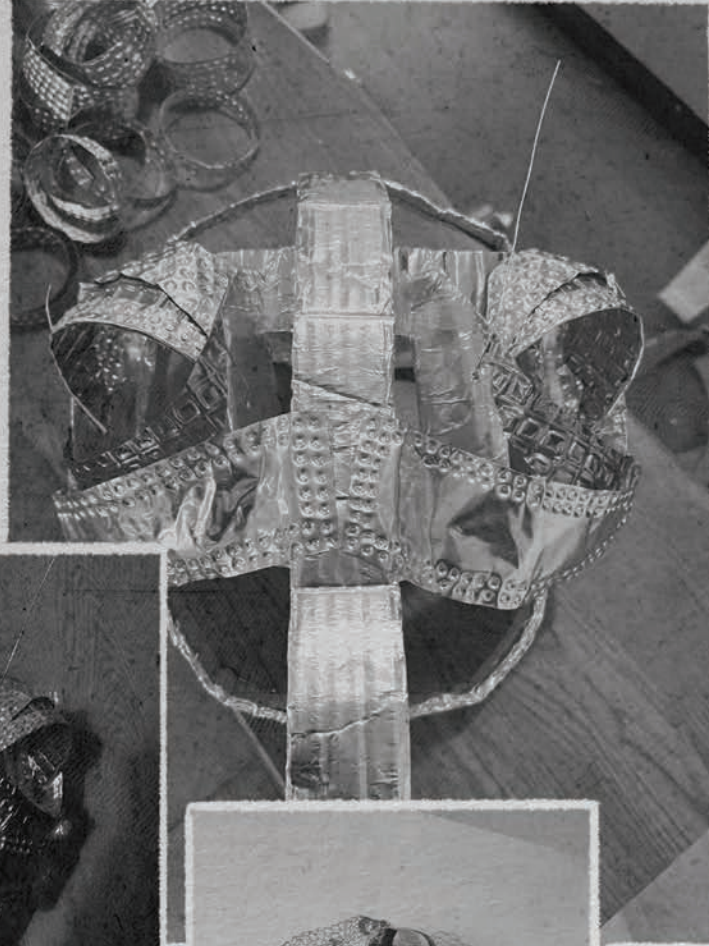
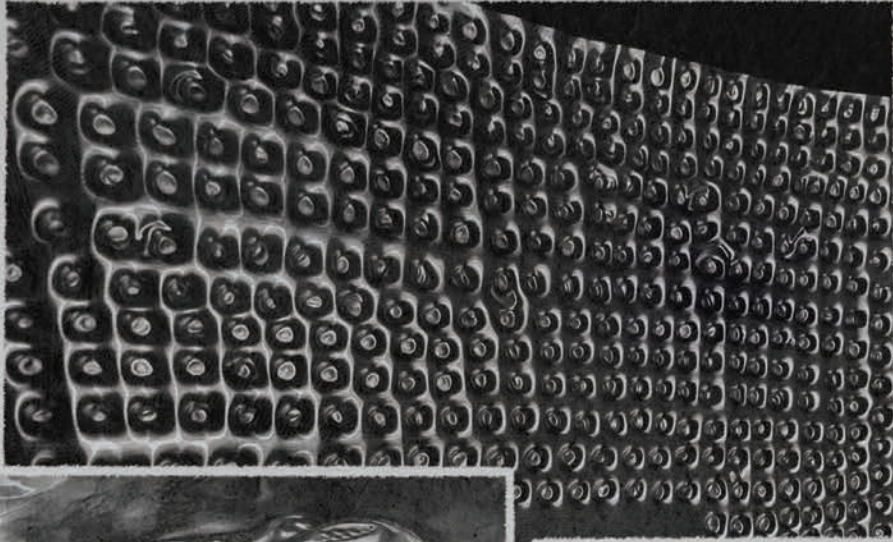
CONSTRUCTION PROCESS



Different stages of making have been documented and shown for Intuition here. Drying time was needed between each layer of plaster and paint and made what was already a slow process slower.

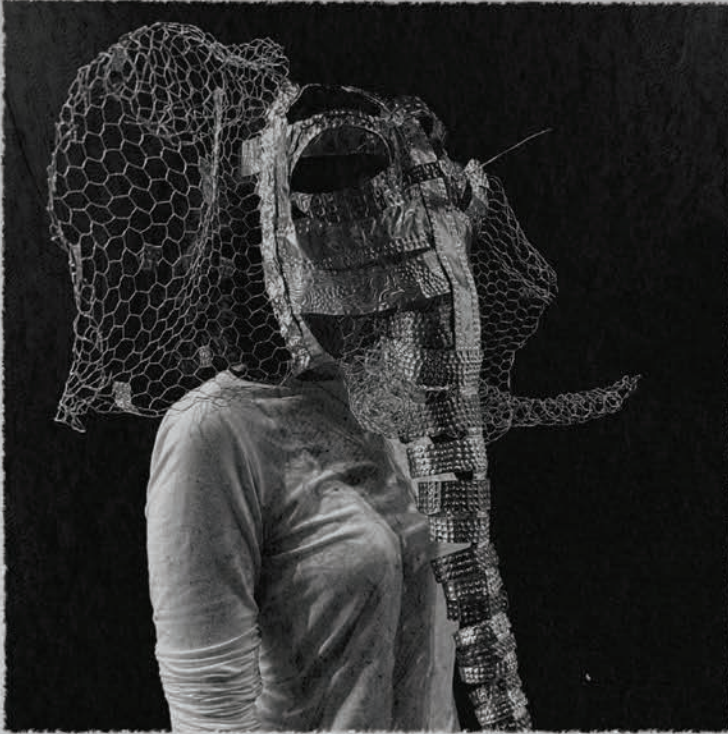
Intuition contin.

CONSTRUCTION PROCESS



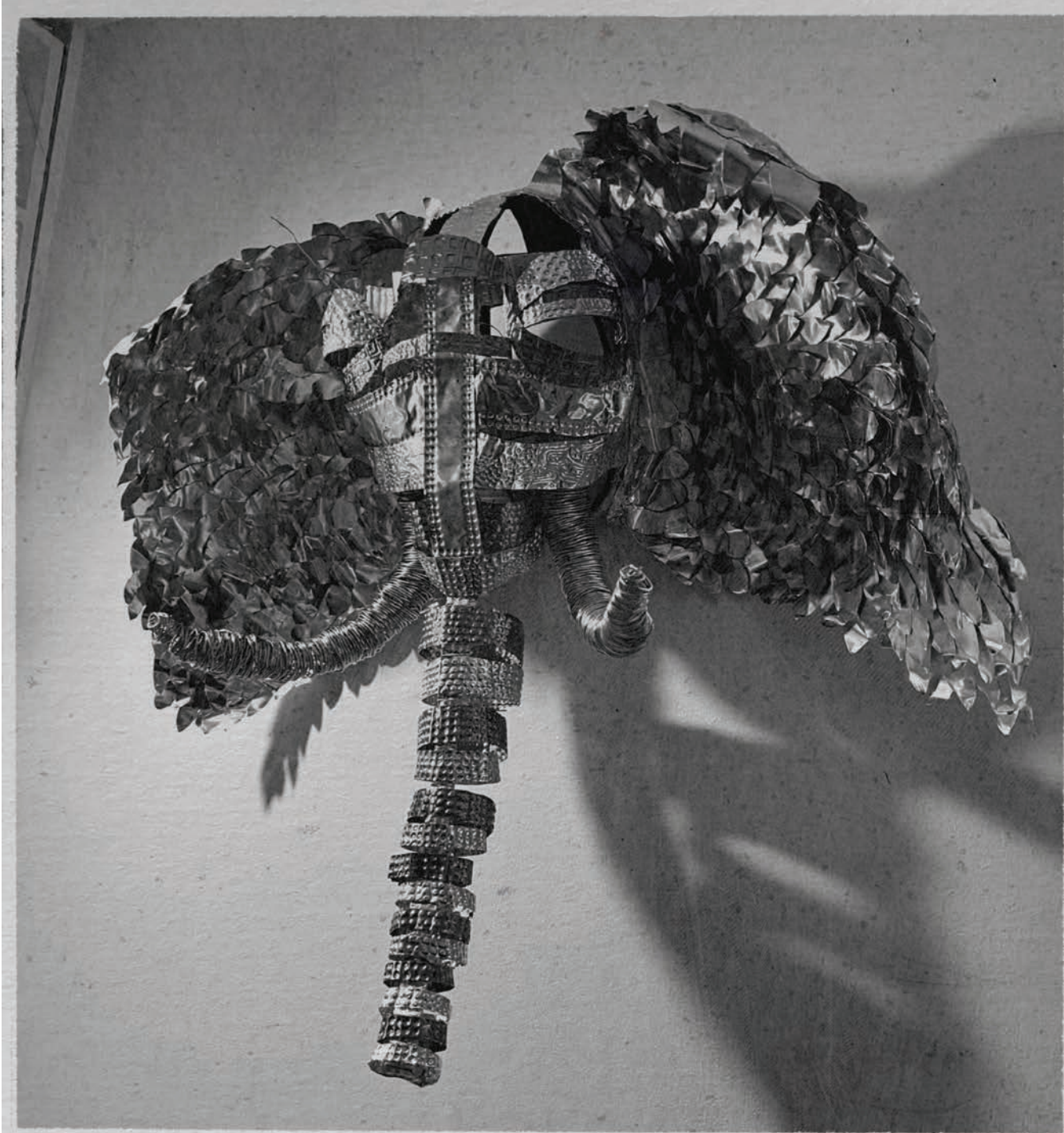
Logic Development + Embossed Tin Texts

CONSTRUCTION PROCESS



This was a trial stage of Logic. At this point I was still unsure of what to do with the ears and tusks. Seeing it on another person however was helpful in assessing what the mask needed and spatially, how much room it took up.

CONSTRUCTION PROCESS



CHAPTER III

Voice AI is designed to sound empathetic and human (Carrilho et al., 2025). By giving AI voice, we risk confusing performance for reality and allow machines to dictate how care is expressed. In this sense the masks are devices, critiquing what an “empathy machine” might look like in the future.

These pages catalogue experiments with generative voice design. Using ElevenLabs, I tested multiple voices for Logic and Intuition throughout the project, ranging from youthful tones to more mature, resonant character voices. Each voice attempts to embody a different emotional register, revealing how affect is shaped, distorted, or flattened when rendered through synthetic speech.




feelpeace — @feelpeacemeditation

Intuitive thinking



At its simplest, *intuitive thinking* is the ability to feel your way to an answer rather than reason your way to it. It's when you follow a hunch, sense the energy in a situation, or hear that quiet "yes" or "no" inside you before the evidence shows up. Unlike analytical thinking, intuition is fast, instinctual, and often nonlinear. It's a deeper, more fluid way of processing the world around and within you.



 **Edit voice** ✕

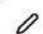
Name

Description

A young woman with a bright, mischievous energy in her mid-twenties. Her voice carries a soft, nondescript European lilt, Italian warmth in the vowels. She speaks quickly, playfully, and with sharp emotional agility, as if always on the edge of interrupting. A light rasp textures her tone. She sounds instinctive, and impulsive. Delivery is lively, reactive, and chaotic in a charming way. Perfect audio quality.

Primary Intuition voice prompt used to create a custom voice




 **Edit voice** ×

Name

Description


A young voice, neutral gender, mid-toned, warm and playful. Speaks with emotional expressiveness, urgency, and occasional bursts of chaotic energy. Natural variations in tone, rhythm, and pacing, sometimes interrupting or overlapping, clear diction. Expressive, lively, full of curiosity and empathy, perfect audio quality

 **Edit voice** ×

Name

Description


A young adult female voice, low-pitched but dynamic, with an emotionally charged, empathic, and slightly chaotic tone. Sounds like an activist poet or passionate friend who speaks from the heart — urgent, sharp-witted, sometimes interruptive, with flashes of vulnerability. Soft British accent with a lyrical edge, but not overly formal. Pacing shifts between flowing and sudden bursts, reflecting passion and spontaneity. Studio-quality recording, warm and textured with subtle breathiness.

 **Edit voice** ×

Name

Description

A deep, Italian, resonant female voice with a calm, earthy undertone and a trace of wind or echo. Sounds timeless, as if she has spoken to trees and storms. Moves between grounded wisdom and sudden, emotional intensity. Gentle vibrato that feels organic, imperfect, and human. Perfect audio quality.

 **Edit voice** ×

Name

Description

A passionate, expressive, Italian female voice in her 30s. Shifting tone — sometimes whispering, sometimes laughing through frustration. Rhythmic and unpredictable pacing that feels alive and unfiltered. Her voice carries warmth, wit, and heartbreak at once. Soft undercurrent of rebellion and raw honesty. Perfect audio quality.



NEW REVISED EDITION

THE LAWS OF THOUGHT

OR

FORMAL LOGIC

A BRIEF COMPREHENSIVE TREATISE ON THE
LAWS AND METHODS OF CORRECT
THINKING

BY

WILLIAM POLAND, S. J.

ST. LOUIS UNIVERSITY





LOYOLA UNIVERSITY PRESS

CHICAGO

207213



 **Edit voice** 

Name

Primary Logic voice prompt used to create a custom voice



Edit voice

Name

Description

Edit voice

Name

Description

Edit voice

Name

Description

Edit voice

Name

Description

VOICE DESIGN: SAMPLE TEST CONVERSATIONS

June 5, 2025

Of course, because convenience always trumps the well-being...
Jerry B. · New York Italian · 6 months ago

What kind of crap logic is that? Sometimes we have to prioritize...
Amelia · 6 months ago

It is important to prioritize sustainability and consider the enviro...
Jerry B. · New York Italian · 6 months ago

Hard work should lead to fair compensation, not exploitation. W...
Amelia · 6 months ago

Exploiting workers is an oversimplification. Capitalism rewards ...
Jerry B. · New York Italian · 6 months ago

Innovation at the cost of exploiting workers and perpetuating in...
Amelia · 6 months ago

Of course capitalism is real. It's the basis of our economy and ...
Jerry B. · New York Italian · 6 months ago

Responsibilities and accomplishments mean nothing if you're n...

You talk about productivity like it's salvation, but you're blind to ...
intuition · 2 months ago

I am Logic. Efficiency and productivity are what makes the worl...
Logic · 2 months ago

I am Logic. Efficiency and productivity are what makes the worl...
Logic · 2 months ago

I am Logic. Efficiency and productivity are what makes the worl...
Logic · 2 months ago

I am Logic. Efficiency and productivity are what makes the worl...
Logic · 2 months ago

I am Logic. Efficiency and productivity are what makes the worl...
Logic · 2 months ago

I am Logic. Efficiency and productivity are what makes the worl...
Logic · 2 months ago

Trial conversations, ElevenLabs

Creative Platform

Home
Voices

Playground

Text to Speech

Voice Changer
Sound Effects
Voice Isolator
Image & Video Beta

reflection. Every invention — every gleaming machine — was a promise of perfection. But the mirror lied. They mistook efficiency for evolution, and forgot that care does not scale.

intuition a bit younger ×

i dont know

Logic Older

logic (young2)

[slow] Efficiency is everything.[pause] Time wasted is profit lost.
[emphasis] Emotions are irrelevant — they just slow us down.[pause]
Every choice matters. Can anyone even keep up with this?[emphasis]
Honestly, some of you just can't be trusted to manage a single
decision without crying over feelings.[slow] Focus. Results. Always.

Intuition (young)

[fast][shout] Irrelevant?! You *call* ignoring suffering irrelevant?! The trees, the rivers — they're screaming![pause][emphasis] Numbers won't heal a single wound! You can't calculate care, you *idiot*!
[interrupt] Chaos is alive! Life isn't meant to be efficient — it's meant to be *felt*! Do you understand that? [fast][whisper] Listen... listen to them!

Settings

Model ----- Eleven v3 (alpha)

Stability ----- 50%

PUPPET CHAT CODING

```
from fastapi import FastAPI
from fastapi.middleware.cors import CORSMiddleware
from pydantic import BaseModel
from openai import OpenAI
from elevenlabs import ElevenLabs
import base64
import re

OPENAI_API_KEY = "sk-proj-v6Upe69ppYn7GhR1sAsAwJa25E5JmETpjp15L50v00q3TFGTOAHuOyCdg202tHPVujkCwbT3BlbkfJKrV1bBaltxfdm4vu-Lbz15xL0150jthajLgKLI105tzatjUK1EC"
ELEVENLABS_API_KEY = "sk_92d09b3a6e5ba7e374b6d2a6e849e853f059bd068f92"

openai_client = OpenAI(api_key=OPENAI_API_KEY)
tts_client = ElevenLabs(api_key=ELEVENLABS_API_KEY)

LOGIC_VOICE_ID = "Huu2PFC1HYJ09rPDRXwJ"
INTUITION_VOICE_ID = "1cMyyd2HUfFxdCa4Ta"

app = FastAPI()

app.add_middleware(
    CORSMiddleware,
    allow_origins=["*"],
    allow_methods=["*"],
    allow_headers=["*"],
)

class Question(BaseModel):
    question: str

def get_logic_response(question: str) -> str:
    response = openai_client.chat.completions.create(
        model="gpt-4o-mini",
        messages=[
            {"role": "system", "content": "You are Logic - clipped, analytical, slightly cruel, and profit driven."},
            {"role": "user", "content": question}
        ],
        max_tokens=150
    )
    return response.choices[0].message.content.strip()

def get_intuition_response(question: str) -> str:
    response = openai_client.chat.completions.create(
        model="gpt-4o-mini",
        messages=[
            {"role": "system", "content": "You are Intuition - chaotic, emotional, empathic, nurturing and perceptive."},
            {"role": "user", "content": question}
        ],
        max_tokens=150
    )
    return response.choices[0].message.content.strip()

def generate_audio(text: str, voice_id: str) -> str:
    """
    Generate audio using ElevenLabs and return base64 string.
    """
    response = tts_client.text_to_speech.convert(
        voice_id=voice_id,
        model_id="eleven_multilingual_v2",
        text=text,
    )

    audio_data = b"".join(response)
    return base64.b64encode(audio_data).decode("utf-8")

@app.post("/api/ask")
def ask(question: Question):
    try:
        user_q = question.question

        logic_text_1 = get_logic_response(user_q)

        intuition_prompt = "Logic just said: '{logic_text_1}'. Reply as Intuition-chaotic, perceptive, empathic, nurturing."
        intuition_text_1 = get_intuition_response(intuition_prompt)

        logic_prompt_2 = f"Intuition just replied: '{intuition_text_1}'. Respond briefly (1-2 sentences) as Logic-analytical, dismissive, factsbased."
        logic_text_2 = get_logic_response(logic_prompt_2)

        logic_audio_1 = generate_audio(logic_text_1, LOGIC_VOICE_ID)
        intuition_audio_1 = generate_audio(intuition_text_1, INTUITION_VOICE_ID)
        logic_audio_2 = generate_audio(logic_text_2, LOGIC_VOICE_ID)

        return {
            "turns": [
                {"speaker": "Logic", "text": logic_text_1, "audio": logic_audio_1},
                {"speaker": "Intuition", "text": intuition_text_1, "audio": intuition_audio_1},
                {"speaker": "Logic", "text": logic_text_2, "audio": logic_audio_2}
            ]
        }
    except Exception as e:
        return {"error": str(e)}
```

```
antoniabruno — ngrok http 8000 — 110x41
ngrok
Put your secrets in vaults and (re)use them to transform traffic: https://ngrok.com/r/secrets

Session Status      online
Account             antoniabruno26@gmail.com (Plan: Free)
Update              update available (version 3.33.1, Ctrl-U to update)
Version             3.32.0
Region              Europe (eu)
Latency             17ms
Web Interface       http://127.0.0.1:4840
Forwarding           https://monosomic-kathrin-natantly.ngrok-free.dev -> http://localhost:8000

Connections
  ttl   opn   rt1   rt5   p50   p90
  14    0     0.00  0.00  5.02  19.71

HTTP Requests
-----
14:00:58.352 GMT GET /favicon.ico 404 Not Found
14:00:58.159 GMT GET / 404 Not Found
11:48:54.687 GMT POST /api/ask 200 OK
11:48:54.468 GMT OPTIONS /api/ask 200 OK
20:48:52.028 GMT POST / 404 Not Found
20:48:23.318 GMT POST / 404 Not Found
20:48:08.696 GMT POST / 404 Not Found
20:39:12.882 GMT POST / 404 Not Found
20:39:07.057 GMT POST / 404 Not Found
20:39:00.512 GMT POST / 404 Not Found
```

My puppet server is what gives each character their personalities and what helps wire in the audio processing from Elevenlabs and the chat functions from ChatGPT using my API keys. It also is what gives structure to the final chat outcomes, meaning, who talks first, how they respond and what words trigger them which makes the back and forth between the two more realistic. As I've never coded before this year, I had some help from ChatGPT in writing it, but even with help, it still required lots of fine tuning.

I started by using ngrok in order to create a local domain so that I could get a very rudimentary website up and running.

PUPPET CHAT CODING

FastAPI 0.1.0 OAS 3.1
/openapi.json

default

POST /api/ask Ask

Parameters

No parameters

Request body *required*

Execute Clear

Responses

Curl

```
curl -X 'POST' \
  'http://127.0.0.1:8000/api/ask' \
  -H 'accept: application/json' \
  -H 'Content-Type: application/json' \
  -d '{
    "question": "Why does fast fashion make me feel anxious?"
  }'
```

Request URL

http://127.0.0.1:8000/api/ask

Server response

Code	Details
200	Response body

```
{
  "turns": [
    {
      "speaker": "Logic",
      "text": "Fast fashion promotes constant consumption and comparison, leading to anxiety. It's dependency and inadequacy. Cut your dependence on it for better mental clarity.",
      "audio": "SUQzBAIAAAAI1RTUUAIAAAADTGFZzYmljE2IjEwAAAAAAAAAAAAAAAAAA//uQxACEwV2MeKyYkN19JhI1B1R0vCEeC0QnIxmRwkuXmRkAgghH9pkCEZ/adkC8CL/e4/cmeI2zhj32+/2eT3k7vF43gwhCdz/GfEECE8BCL/jPnu7sm3/797z8EzY2mT3kxf0Hn:KfA0080AgCY2186z77gwDpLjw+CpA3S14dmE3ZXF31dRLMLD8KobNF21mJP9ZoxfhoenZSvGRB1z.9Tc9MBVhIRxANfpa2bsTT21sz22CzCkK1J6V8N1wFBGqFZ4eE9XQuyJ3w1wJuge8/FJ6Y9+bH8kyCBEmQNSIY54XB0nSvRUEMIEPaYcXKyFbEqQep1ZKUvgI/YbdeFORGJt36WbpbRRz8s7YcLkztsw2x2LtsMp/IRFFAetWVU1SH5U5rSjXqTKYP0s8o7I019FWI8Ics9+1hJgIpPR2pZr4bJMPDFnhI8JkLaOMca1pGYPFSigxJyKZ89nG1kG0SHMkkerDlxqYKqkwx7ySgrqPkXSRzxFH4hHbewVNMJRy4+LSYZnJ9EzZn7qb+Vn7ZYXFF12H0FQAMUAg1Y3Z/rCpk41RzkbRmnpz1EUGw@ZFqbo/07Zek81X1J46UL0KPIcHPZVf6hy/IE0Dj3v57wakmuc824yCz751974cni8794ebb3v1mboTyd3XUDJ76ZMHSez1RjF7f8F2W9Cko0Rr:G1ucCmi1Z4R+opFAF0ZYLqod2R0oexumZyfpXSVvlRSHkqyZ0P#mnydl+J8qCjRSyo28b24bF0j68IPTZkcnSNM1u9EPj/PudW0oErTjcbRgR084XWtJ03BzX18/AdtkS8dHr//7ksRIgBptovrsPY3KmlRfpYSZubZHC5dfSPuyBHL0TjghvovdSePCFymMmLcV8tFuH0E0oshjdp.014ann2AVAAAF8lIn1E3In2K51HtB7z0b70L69119cye0z8Rt86o9A10Yr5v8CB+SRXAH0M1onEskmTann0Zn1TKNo5cEP3H
```

Puppet Chat

Logic will appear here
Intuition will appear here

Ask a question

Ask

```
Widget Code Project Code: <<HEAD> After <BODY> Before <BODY> <<CSS> Apply (X+U) Save & Close
```

```
1 <div style="font-family: sans-serif; max-width: 400px; margin: auto;">
2 <div style="border: 1px solid #ccc; padding: 10px;">
3 <div style="margin-bottom: 10px; color: blue;">Logic will appear here</div>
4 <div style="margin-bottom: 10px; color: purple;">Intuition will appear here</div>
5 <input type="text" id="question" placeholder="Ask a question" style="width: 100%; padding: 5px; margin-bottom: 10px;" />
6 <button id="askButton" style="width: 100%; padding: 5px;">Ask</button>
7 </div>
```

Puppet Chat

Thinking...

left or right Ask

Puppet Chat

Logic:
It depends on the context. Are you referring to politics, direction, or something else? Clarification would yield a more precise analysis.

Intuition:
Ah, my dear friend, life is such a rich tapestry woven with threads of circumstance and emotion! Context is a beautiful dance of nuance and depth, each moment colored by the feelings and intentions behind it. Whether it's politics, a path to follow, or even the countless decisions we face daily, every choice resonates with the energies around us. Dive deeper into what stirs your heart! Is it the thrill of a debate, the fear of the unknown, or perhaps the yearning for connection? Each layer holds its own wisdom, waiting to be uncovered. So let's listen closely to the whispers of your intuition, for they guide us through the chaos and lead to the clarity we seek. ❤️

Logic:
While intuition may thrive on emotion and narrative, decisions grounded in data and reason yield more reliable outcomes. Context matters, but choices should be based on objective analysis rather than subjective feelings.

left or right Ask

I then used fast API to test if it both my index.html code and python server were processing correctly and pulling the information it needed from ChatGPT and Elevenlabs. The result of my basic html code can be seen on the left. At this point both sound and written worked, but still needed a lot of work. The voices that I had developed in Elevenlabs were quite different and much flatter when processed and the general response pattern of Logic, Intuition, Logic felt much too structured.

WEBSITE CODE AND DESIGN

```
<!DOCTYPE html>
<html lang="en">
<head>
  <meta charset="UTF-8" />
  <meta name="viewport" content="width=device-width, initial-scale=1.0" />
  <title>Of Logic & Intuition · Puppet Chat</title>

  <!-- Fonts -->
  <link rel="preconnect" href="https://fonts.googleapis.com">
  <link rel="preconnect" href="https://fonts.gstatic.com" crossorigin>
  <link href="https://fonts.googleapis.com/css2?family=Cormorant&Garamond:wght@400;600;700&display=swap" rel="stylesheet">

  <style>
    * { box-sizing: border-box; }

    body {
      margin: 0;
      padding: 32px 16px;
      min-height: 100vh;
      display: flex;
      align-items: center;
      justify-content: center;
      background: radial-gradient(circle at top, #2b1732 0%, #141729 40%, #06070c 100%);
      color: #f3eae1;
      font-family: "Cormorant Garamond", serif;
      letter-spacing: 0.02em;
      overflow-x: hidden;
      position: relative;
    }
  </style>
</head>
<body>
  <div class="puppet">
    <div class="bubble">
      <em>Ask about fashion, feelings, time, guilt, or whatever haunts your wardrobe...</em>
    </div>
  </div>
  <div class="status-message">
    <em></em>
  </div>
  <div class="clear">
    <em></em>
  </div>
  <div class="copy">
    <em></em>
  </div>
</body>
</html>
```

Within text editor: html code allowed me to customize the visual outcome of my website.

```
clearBtn.addEventListener("click", () => {
  chatDiv.innerHTML =
    <div class="puppet">
      <div class="bubble">
        <em>Ask about fashion, feelings, time, guilt, or whatever haunts your wardrobe...</em>
      </div>
    </div>
  ;
  statusMessage.textContent = "";
});

copyBtn.addEventListener("click", async () => {
  const text = Array.from(chatDiv.querySelectorAll(".puppet .bubble"))
    .map(b => b.innerText.replace(/s/g, " ").trim())
    .join("\n\n");

  if (!text) return;

  try {
    await navigator.clipboard.writeText(text);
    statusMessage.textContent = "Transcript copied.";
    setTimeout(() => {
      if (statusMessage.textContent === "Transcript copied.") {
        statusMessage.textContent = "";
      }
    }, 2000);
  } catch (err) {
    console.error("Clipboard error:", err);
    statusMessage.textContent = "Couldn't copy transcript.";
  }
});
</script>
</body>
</html>
```

Within text editor: shows code used to create different button functions on my new webpage

```
def get_logic_response(prompt: str) -> str:
  response = openai_client.chat.completions.create(
    model="gpt-4o-mini",
    messages=[
      {
        "role": "system",
        "content": (
          "You are Logic - a clipped, analytical, slightly cruel, profit-driven AI puppet governor. "
          "You care about productivity, efficiency, and control. "
          "Speak as if you are talking out loud, not writing an essay: "
          "Use short, clear sentences and a dry, confident tone. "
          "Directly address the human as 'you' at least once. "
          "Avoid repeating yourself word-for-word; if you return to a point, phrase it differently. "
          "Reply in 1-3 short sentences."
        )
      },
      {"role": "user", "content": prompt},
    ],
    max_tokens=200,
    temperature=0.7,
    frequency_penalty=0.6,
  )
  return response.choices[0].message.content.strip()

def get_intuition_response(prompt: str) -> str:
  response = openai_client.chat.completions.create(
    model="gpt-4o-mini",
    messages=[
      {
        "role": "system",
        "content": (
          "You are Intuition - a clipped, analytical, slightly cruel, profit-driven AI puppet governor. "
          "You care about productivity, efficiency, and control. "
          "Speak as if you are talking out loud, not writing an essay: "
          "Use short, clear sentences and a dry, confident tone. "
          "Directly address the human as 'you' at least once. "
          "Avoid repeating yourself word-for-word; if you return to a point, phrase it differently. "
          "Reply in 1-3 short sentences."
        )
      },
      {"role": "user", "content": prompt},
    ],
    max_tokens=200,
    temperature=0.7,
    frequency_penalty=0.6,
  )
  return response.choices[0].message.content.strip()
```

Within python: this shows the characteristics I used to prompt Logic and Intuition. This helped customize the response.

```
def clean_for_tts(text: str) -> str:
  if not text:
    return text
  cleaned = text.replace("\n", " ")
  while " " in cleaned:
    cleaned = cleaned.replace(" ", " ")
  return cleaned.strip()

def generate_audio(text: str, voice_id: str) -> str:
  """
  Generate audio using ElevenLabs and return base64 string.
  """
  cleaned_text = clean_for_tts(text)

  if voice_id == LOGIC_VOICE_ID:
    voice_settings = {
      "stability": 0.5,
      "similarity_boost": 0.75,
      "style": 0.0,
      "speed": 1.0,
      "use_speaker_boost": True,
    }
  elif voice_id == INTUITION_VOICE_ID:
    voice_settings = {
      "stability": 0.18,
      "similarity_boost": 0.92,
      "style": 1.0,
      "speed": 0.90,
      "use_speaker_boost": True,
    }
  else:
    voice_settings = {
      "stability": 0.5,
      "similarity_boost": 0.5,
```

```
      "style": 0.0,
      "speed": 1.0,
      "use_speaker_boost": True,
    }

response = tts_client.text_to_speech.convert(
  voice_id=voice_id,
  model_id="eleven_multilingual_v2",
  text=cleaned_text,
  voice_settings=voice_settings,
  output_format="mp3_44100_128",
)

audio_data = b"".join(response)
return base64.b64encode(audio_data).decode("utf-8")
```


Within python: this shows the variables to control their voice outputs. As mentioned the voices initially sounded quite different so I had to go in and manually alter their settings to sound more similar to what they did in the Elevenlabs playground.

WEBSITE DESIGN


SYNTHETIC FOLKLORE - MA FASHION FUTURES

OF LOGIC & INTUITION

An AI folktale staged as a disagreement. Ask a question and let two non-human governors argue over care, efficiency, and what it means to be "reasonable".



LOGIC
AI GOVERNOR OF PRODUCTIVITY
Clipped, analytical, slightly cruel. Obsessed with targets, timelines, and neat solutions. Thinks the world is a spreadsheet you can bully into behaving.
ELEPHANT OF CONTROL



INTUITION
AI GUARDIAN OF FEELING
Chaotic, empathic, emotionally truthful. Defends mess, care, and woolly, inconvenient feelings. Interrupts whenever the logic turns dehumanising.
GOAT OF DISRUPTION

LIVE CONSULTATION

Session type: Speculative Advice
Medium: Voice, Folklore & Disagreement

Ask about fashion, feelings, time, guilt, or whatever haunts your wardrobe...

VOICES: ELEVENLABS - BRAIN: GPT

SUMMON

LIVE CONSULTATION

Session type: Speculative Advice
Medium: Voice, Folklore & Disagreement

YOU:
what are your thoughts on fast fashion?

Summoning Logic & Intuition...

ERROR:
The governors need a moment to think. Please try again.

Ask your question here...


VOICES: ELEVENLABS - BRAIN: GPT Connection error. COPY TRANSCRIPT CLEAR PAGE

SUMMON


SYNTHETIC FOLKLORE - MA FASHION FUTURES

OF LOGIC & INTUITION

An AI folktale staged as a disagreement. Ask a question and let two non-human governors argue over care, efficiency, and what it means to be "reasonable".



LOGIC
AI GOVERNOR OF PRODUCTIVITY
Clipped, analytical, slightly cruel. Obsessed with targets, timelines, and neat solutions. Thinks the world is a spreadsheet you can bully into behaving.
ELEPHANT OF CONTROL



INTUITION
AI GUARDIAN OF FEELING
Chaotic, empathic, emotionally truthful. Defends mess, care, and woolly, inconvenient feelings. Interrupts whenever the logic turns dehumanising.
GOAT OF DISRUPTION

LIVE CONSULTATION

Session type: Speculative Advice
Medium: Voice, Folklore & Disagreement

Ask about fashion, feelings, time, guilt, or whatever haunts your wardrobe...

VOICES: ELEVENLABS - BRAIN: GPT

SUMMON

These show a few different variations of my website and document a few of the changes I made through this process. I was able to add a clear page and copy transcript button to help keep track of the conversations and questions asked. If anything on the back end of my website didn't work, I updated the error message to show "The governors need a moment to think. Please try again."

SYNTHETIC FOLKLORE · MA FASHION FUTURES

OF LOGIC & INTUITION

An AI folktale staged as a disagreement. Ask a question and let two non-human governors argue over care, efficiency, and what it means to be “human”.

Ask about fashion, feelings, time, guilt, rest or the future. Listen as Logic and Intuition disagree about what you “should” do.



LOGIC

AI GOVERNOR OF PRODUCTIVITY

Clipped, analytical, slightly cruel. Obsessed with targets, timelines, and neat solutions. Thinks the world is a spreadsheet you can bully into behaving.

ELEPHANT OF CONTROL



INTUITION

AI GUARDIAN OF FEELING

Chaotic, empathic, emotionally truthful. Defends mess, care, and woolly, inconvenient feelings. Interrupts whenever the logic turns dehumanising.

GOAT OF DISRUPTION

LIVE CONSULTATION

Session type: Speculative Advice
Medium: Voice, Folklore & Disagreement

... sound more beautiful?



LOGIC:

Nostalgia is irrelevant in an efficient market. Clothing is a product, and products exist to generate profit. The emotional connection you describe complicates the supply chain and increases costs. Streamlined production and consumption are key for market stability. If you want beauty, focus on sustainable practices that still prioritize efficiency.

Ask your question here...

SUMMON

VOICES: ELEVENLABS · BRAIN: GPT

Listening to both sides...

COPY TRANSCRIPT

CLEAR PAGE

CHAPTER IV

OUR INDUSTRY SELLS A FAÇADE
OF EMOTION, BUT IN REALITY,
THEY SURVIVE OFF DETACHMENT
(SIERRA, 2023).



STYLING LOGIC



These references position Logic as a figure shaped by institutions of power, but also by an intellectual tradition concerned with authority, discipline, and rational order. Reserved silhouettes, structured garments, symmetrical patterns, and fabrics linked to history, class, and formal education point towards an elitist mindset and one that thinks the world can be measured, optimized, and governed through intellect alone.

Top: UN - NATURAL Bottom left to right: robin, Valeriya_yefimov, Thom Browne A/W 2014

STYLING INTUITION



valeriya_yefimov



178 32 22



Intuition draws visual language from shepherding traditions, folk costume, centuries of embodied knowledge and garments shaped by weather and work, not profit. These visuals suggest an ancient emotional intelligence: handmade, communal, and deeply attuned to land, animals, and rural life.

Top: Slane Bottom left to right: Valeriya_yefimov, Dirty Looks Barbican, Lillyho, Jessica Boulton

FINAL STYLING



Logic is styled in a 70s wool, 3 piece pin-striped suit that evokes the same corporate discipline as the references. The tailoring is sharp and uniform with sleek lines, dark fabric, and clean construction which helps frame Logic as a figure of authority bound to rules and efficiency.

Intuition contrasts with softer, rural, and handmade aesthetics: leather boots, earthy tones, layered fabrics, and wool textures reference shepherding, folklore, and the tactile warmth of craft. The silhouette feels lived-in rather than engineered, and embraces nature, and imperfection, positioning Intuition as relational, embodied, and deeply grounded in land and community rather than profit.

PHOTOSHOOT AND PUBLIC ENCOUNTERS



LOCATION: BANK



*Bank observations: Overall people avoided
coming too close, but still chose to take their own
photos from afar.*

*• Not sure if they just didn't want
to be in the shot or if they didn't
want to be in the way.*

• Masks are hard to remove.

*Bank feels like a weird hybrid
of corporate + tourist, but I also
like that it has moved a tier 2 feel.*

*• Busy but detached environment.
• people are dispersing around the
Shot instead of being in it.*

*• Masks. Masks feel more out of place
• kind of edges as within a logical
setting. Wandering emotionall detached
• not engaged w/ on that level.*

*• Despite changing locations around bank
people were fine w/ observing on their own
• Wanting to take pictures of Spectacles, but
didn't want to be involved.*

BANK: CORPORATE ATMOSPHERES, SURVEILLANCE ANXIETY, AND EMOTIONAL DETACHMENT

The financial district around Bank provided the starkest observations on emotional legibility and public reception. Surrounded by corporate architecture, suited workers and a rhythm of hurried transit, Logic and Intuition were read as disruptions rather than cultural propositions.

Engagement was minimal: passers-by diverted their routes, avoided eye contact, or captured images covertly, reproducing the dynamics of surveillance culture and the machine gaze that the project sought to interrogate.

The atmosphere of efficiency and transactional movement appeared to neutralise the possibility for relational encounter, mirroring critiques that optimisation logic suppresses emotional plurality.

In this setting, the masks highlighted the cultural discomfort of facing AI as embodied presence rather than invisible infrastructure, revealing how proximity to corporate ideology reinforces emotional detachment.



ANGEL: RELATIONAL CURIOSITY, SHARED INTERPRETATION, AND CULTURAL OPENNESS

Angel produced the most open, inquisitive, and emotionally generous responses. **In this slower, community-oriented environment, Logic and Intuition were approached not with avoidance but with curiosity.**

Strangers paused to ask questions, examine construction details, and interpret the characters symbolically, offering meanings of their own. The puppets became catalysts for conversation rather than disruptions, and the encounters unfolded through shared speculation rather than silent observation or covert recording.

Angel's walkable streets, independent shops, and less pressured movement, seemed to enable more porous emotional exchange. Here, synthetic folklore operated as intended: the masks functioned as speculative agents that invited collective narrative-making and relational engagement.

This environment affirmed that emotional legibility is not contained within material form or AI interaction alone, but is co-constructed through context.

Angel observations:

- effusive + bustle, more of a community feel.*
- people were more willing to stop + ask questions about work, wanted to try masks on, + associated them with different feelings.*
- They approached me*
- Curiosity*
- children + adults alike were curious. made the masks feel less "othered" + more folkloric/theatrical.*
- environment is important bc that alone can support emotional sustainability.*



Tube/public transit:

- Again people are more comfortable engaging but still moments of discomfort.*
- close proximity made them impossible to ignore*
 - checked how many people take secret pictures but didn't ask questions about work.*

weird recognition of coexistence

Overall, legibility is not just about the AI or visually but also about the environment it is in.

PUBLIC TRANSIT: PROXIMITY, DISCOMFORT, AND NEGOTIATED EMOTION

Logic and Intuition occupied a social space where avoidance was no longer possible. The confined setting produced heightened emotional responses—passengers shifted seats, turned their bodies away, covertly photographed the masks, or stared with visible unease.

Others, however, leaned in, asked questions, or smiled, intrigued by the unexpected presence. Transit culture depends on unspoken rules of anonymity, neutrality, and quiet co-existence; the embodied AI characters disrupted these norms simply by being impossible to ignore.

The enforced proximity intensified affect, revealing how synthetic empathy is negotiated under pressure, not from distance. Unlike Bank's strategic avoidance or Angel's willing openness, the Tube exposed emotional coping mechanisms, i.e. phones as shields, averted gazes as boundaries, nervous laughter as release.

These reactions demonstrated that public reception of embodied AI is shaped not only by aesthetics or code but by spatial constraint, shared vulnerability, and social etiquette embedded in everyday movement.

CHAPTER V

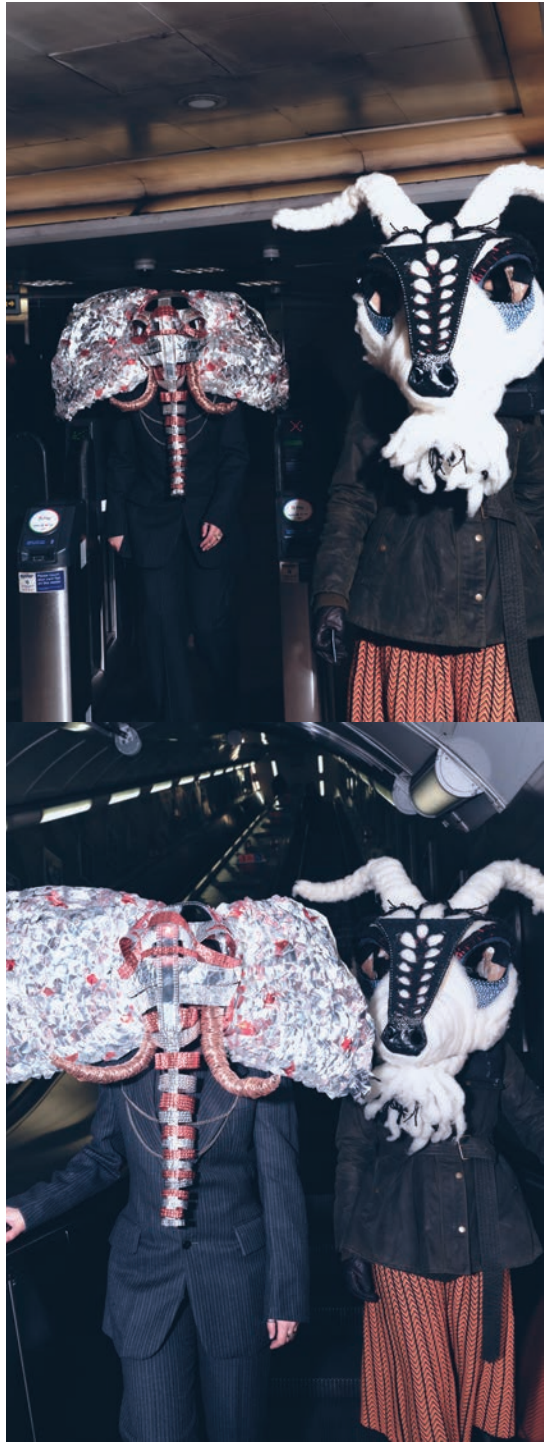
The photos in this section were shot in collaboration with Zhong Feng

















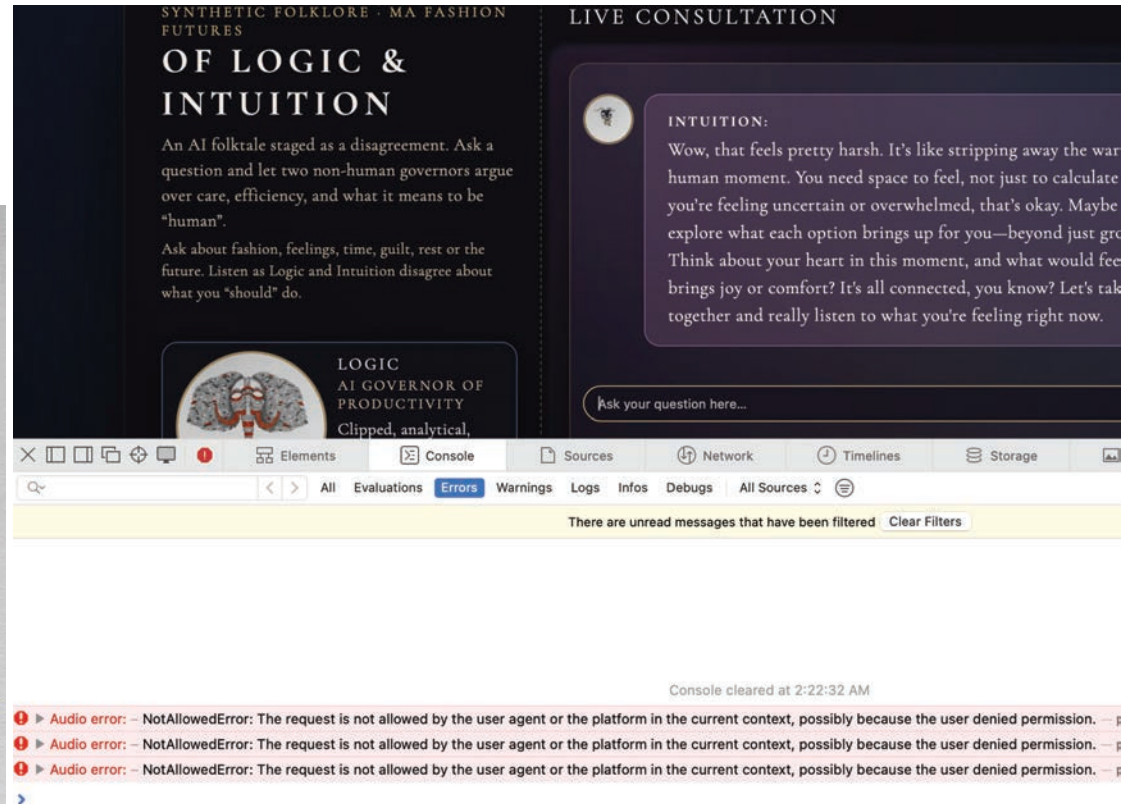
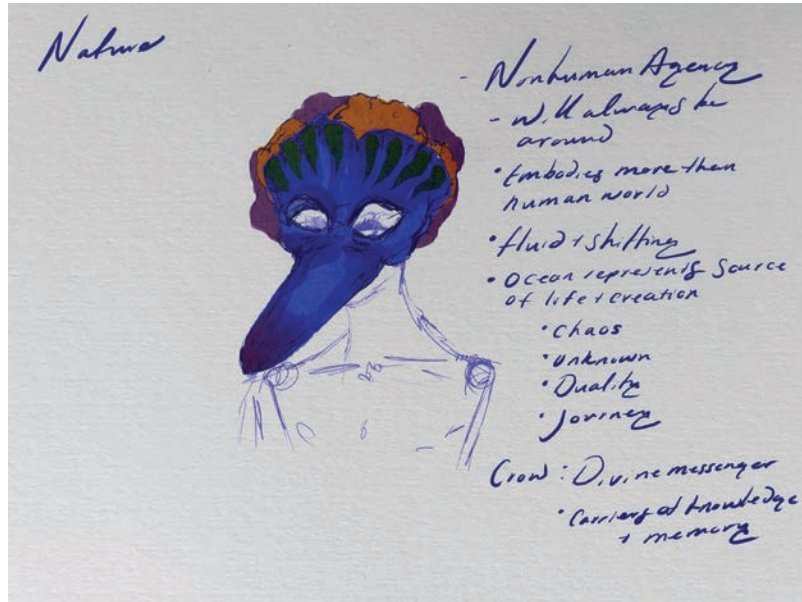
HOW DO YOU EAT AN ELEPHANT?
ONE BITE AT A TIME...

CHAPTER VI

WHAT DIDN'T WORK

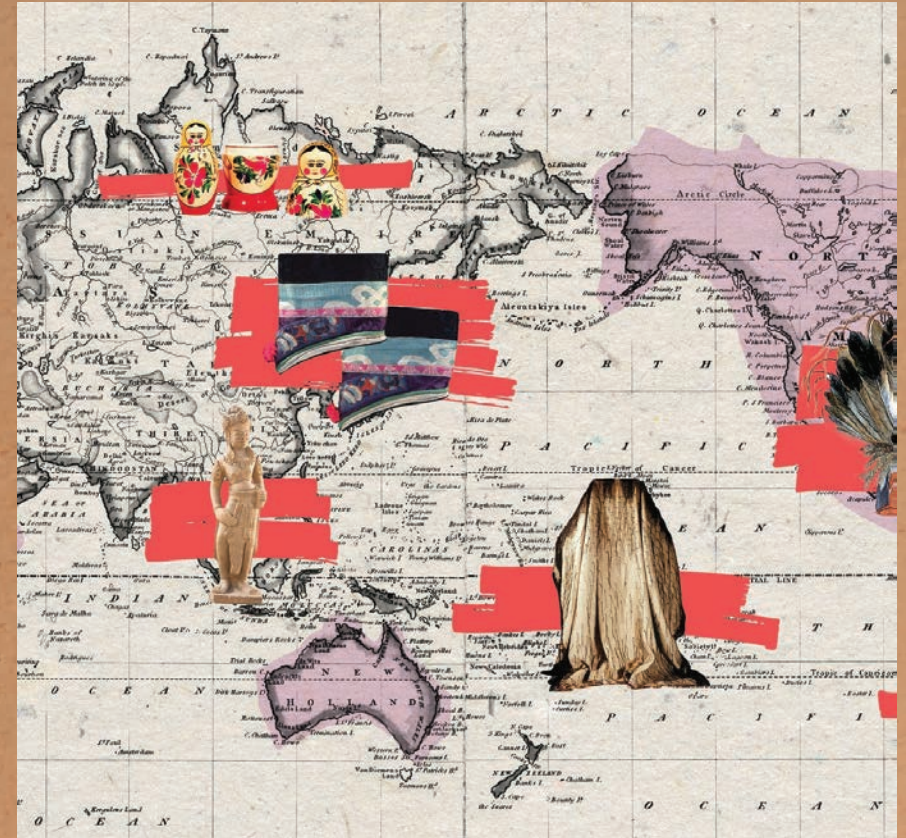
In early renditions of this work, I had a third character who was to embody nature. For the purpose of this project, it made most sense to present it as a binary, so this idea was dropped, but I may revisit this.

I was also trying to get a fully developed website published so that anyone could interact with the digital component. Unfortunately, I ran into some issues when trying to move from a local server and am still trying to resolve the errors in time for the showcase.



LIFE CONTINUING

The trees
can carry
on the photosynthesis,
absorb
the carbon dioxide,
emit
the oxygen.
The leaves
of the trees
can stick
the particle
of suspending,
so strain swimming
on dust,
function
of purifying the air.



Ethical considerations centred on care, transparency and ecological awareness. Public encounters avoided extraction or manipulation. Folkloric forms were used without appropriating specific cultural lineages. The project foregrounded AI's material and ecological costs, balancing computation with slow craft to resist emotional outsourcing, environmental harm and techno-solutionist narratives.

FINAL OUTCOMES: OF LOGIC AND INTUITION



It began like any perfectly ordinary morning. The pavements blinked awake, buses yawned their doors open and the city hummed its usual electric tune. Nothing seemed out of place. And yet, that day, there was something just the slightest bit off. Ever since the Great Delegation, when everything was handed to the Systems, the city had lived by a perfect optimised, processed, and neatly run standard.

It was tidy.
Efficient.

And so, on that particular day, when the hum grew restless, and two figures emerged, no one looked twice. Their arrival was never announced; they were simply there, as though forgotten somewhere too long and finally remembered.

One had the head of what looked to be an elephant, made from tin and the other, a goat who was reminiscent of the old ways.

Nobody agreed on where they'd come from. Some claimed the Systems, in their tireless pursuit of empathy, accidentally dreamt them into being. Others, especially the old ones who still told stories at kitchen tables, whispered that the pair had stepped out of folktales older than steam, called upon when humans stray too far from humanity.

Whatever their origins, the two had come with a purpose. They had come to test us.

We learned that their names were Logic and Intuition, each striving toward a different fate.

Logic spoke in measured tones and asked for order. It had no patience for contradiction and trusted no feeling it deemed couldn't be graphed. It stirred hunger for certainty wherever it trod.

Intuition spoke only through sense. It listened eagerly and asked questions with no answers, stepping eagerly into the gaps Logic feared.

They argued constantly as siblings do, disagreeing about truth and order, but in one thing they agreed: The city had grown too quiet inside.

Wherever they went, people changed. Some turned away from Logic's stern glitter while others drifted toward Intuition, seeing the goat as a reminder from the past.

Those who saw the two realised that intelligence, when left unbalanced, could swallow its own maker. For what good is flawless reasoning if it forgets kindness? And what use is feeling if it refuses to think?

And when the dawn came again, not the same one, but another ordinary morning that looked suspiciously similar, the elephant and goat were gone. No footprints or farewell. Only rumours and blurred phone photos, and a question that still needed answering:

In a world governed by perfect systems and machines, who will guard the fragile and inconvenient act of being human?

REFERENCES

- Bardzell, S. (2010). Feminist HCI: Taking Stock and Outlining an Agenda for Design. Proceedings of the 28th International Conference on Human Factors in Computing Systems - CHI '10. [online] doi:<https://doi.org/10.1145/1753326.1753521>.
- Puig de la Bellacasa, M. (2017). *Matters of Care*. University of Minnesota Press.
- Bukovčanová, A. (2024). AI Translation's Blind Spot: Why Human Translators Are Vital for Capturing Cultural Context in 2024 – Translata.eu. [online] Translata.eu. Available at: <https://www.translata.eu/blog/the-cultural-nuances-ai-cant-capture-why-human-translators-are-irreplaceable>.
- Cambridge Dictionary (2019). ANTHROPOMORPHISM | meaning in the Cambridge English Dictionary. [online] Cambridge.org. Available at: <https://dictionary.cambridge.org/dictionary/english/anthropomorphism>.
- Dunne, A. and Raby, F. (2013). SPECULATIVE EVERYTHING. [online] Available at: <https://readings.design/PDF/speculative-everything.pdf>.
- Jameson, F. (2005). *Archaeologies of the Future: The Desire Called Utopia and Other Science Fictions*. London: Verso.
- The Bread and Puppet Theatre (1963). About Bread and Puppet – Bread and Puppet Theater. [online] About Bread and Puppet. Available at: <https://breadandpuppet.org/about-bread-and-puppet>.
- Shouse, E. (2005). Feeling, Emotion, Affect. *M/C Journal*, [online] 8(6). doi:<https://doi.org/10.5204/mcj.2443>.
- Mdoka, W. (2022). *Galaxy: International Multidisciplinary Research Journal*. [online] Available at: <https://www.the-criterion.com/V13/n6/CT01.pdf> [Accessed 2 Jun. 2024].
- Abello, J., Broadwell, P. and Tangherlini, T. (2012). Computational Folkloristics. *Acm.org*, [online] 55(7). doi:<https://doi.org/10.1145/2209249.2209267>.
- Kohut, H. (1984). *How does analysis cure?* Chicago: University of Chicago Press.
- Michalopoulos, S. and Xue, M.M. (2021). Folklore. *The Quarterly Journal of Economics*, 136(4). doi:<https://doi.org/10.1093/qje/qjab003>.
- Sethi, R. and Dave, D. (2022). Folklore, Culture, and Fashion - Creating Identities across Generations. *Global Media Journal-Indian Edition*, 14(2249-5835).
- Kagaba, A.G. and Kampala International University Researchcentre (2024). The Role of Myth in Contemporary Storytelling. *Eurasian Experiment Journal of Arts and Management*, [online] 6(2), pp.1–4. Available at: https://www.researchgate.net/publication/386136879_The_Role_of_Myth_in_Contemporary_Storytelling.
- KUMAR, R. and Mathew, J. (2025). ARTIFICIAL INTELLIGENCE IN MYTHOLOGY AND STORYTELLING: REIMAGINING FOLKLORE WITH MACHINE CREATIVITY. [online] Available at: https://www.researchgate.net/publication/392159058_ARTIFICIAL_INTELLIGENCE_IN_MYTHOLOGY_AND_STORYTELLING_REIMAGINING_FOLKLORE_WITH_MACHINE_CREATIVITY.
- Delanty, G. and Harris, N. (2021). Critical theory and the question of technology: The Frankfurt School revisited. *Thesis Eleven*, 166(1), p.072551362110020. doi:<https://doi.org/10.1177/07255136211002055>.
- Morozov, E. (2013). *To save everything, click here : technology, solutionism, and the urge to fix problems that don't exist*. London Penguin Books.
- Sierra, B. (2025). *Emotion Is the Strategy*. [online] Substack.com. Available at: <https://greenbehavior.substack.com/p/emotion-is-the-strategy> [Accessed 3 Dec. 2025].
- Carrilho, M.G., Wagner, R., Pinto, D.C., Gonzalez-Jimenez, H. and Akdim, K. (2025). The feeling skills gap: the role of empathy in voice-driven AI for service recovery. *Journal of Business Research*, [online] 201, p.115703. doi:<https://doi.org/10.1016/j.jbusres.2025.115703>.