

# Primary Data

Focus group, Survey

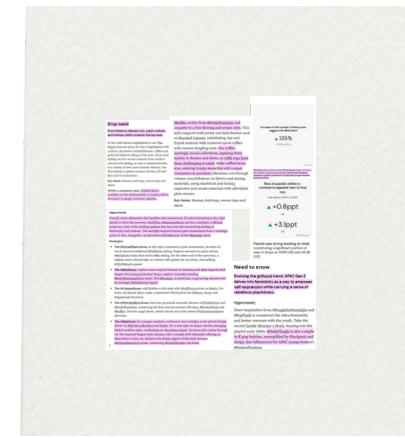
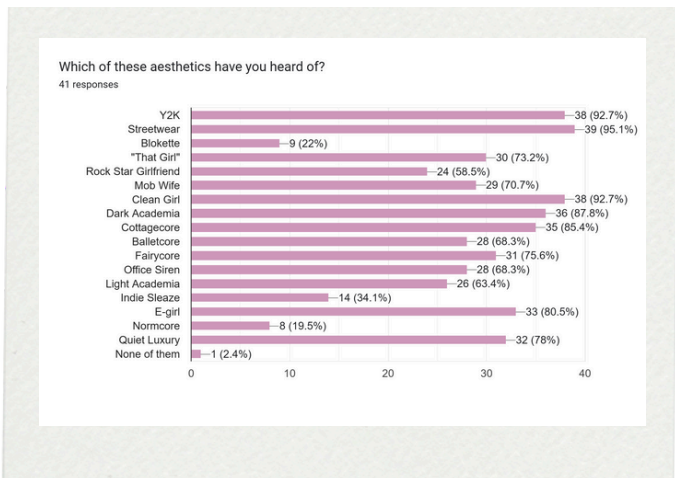
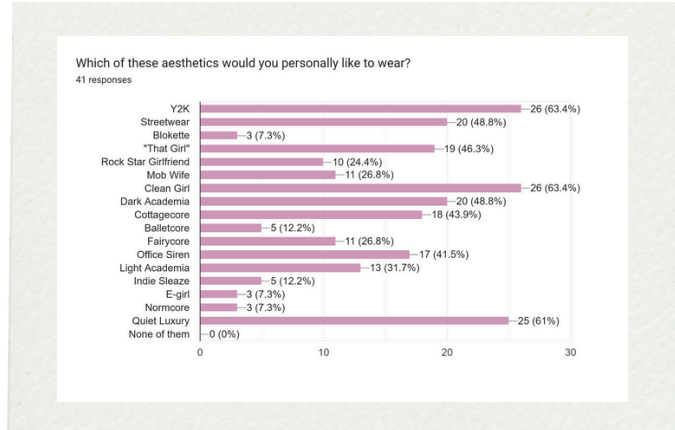
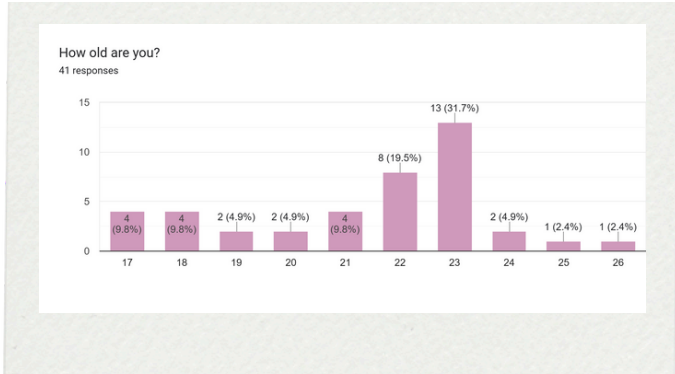
+

# Secondary Data

Reports

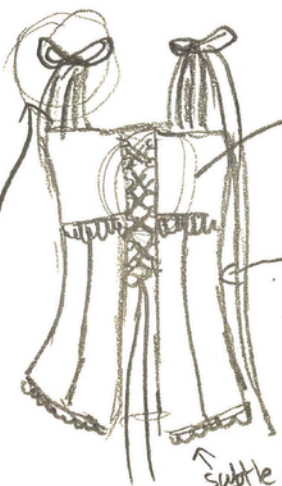
=

# Garment Details





lace panels



cinched waist

subtle flare



LOOK 1

adjustable back



adjustable waist



lace hems!



adjustable bow strap

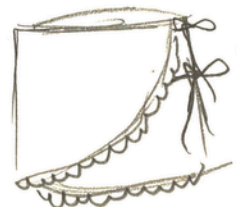
flowers, lace,  
bows, feminine  
Soft girl!



look 2



adjustable back panel



adjustable wrap around skirt

lace hem



flattering on the bust  
flared bottom of top

Y2K, halterneck, micro mini

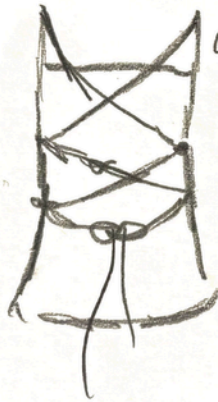


look 3



minimal

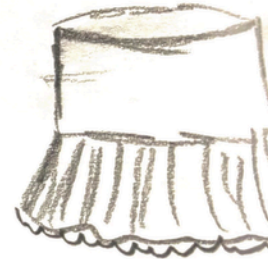
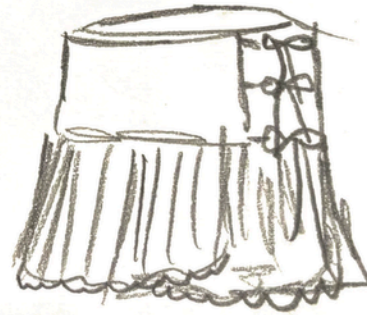
match a green,  
minimal, dean  
girl



open  
back  
(adjustable)

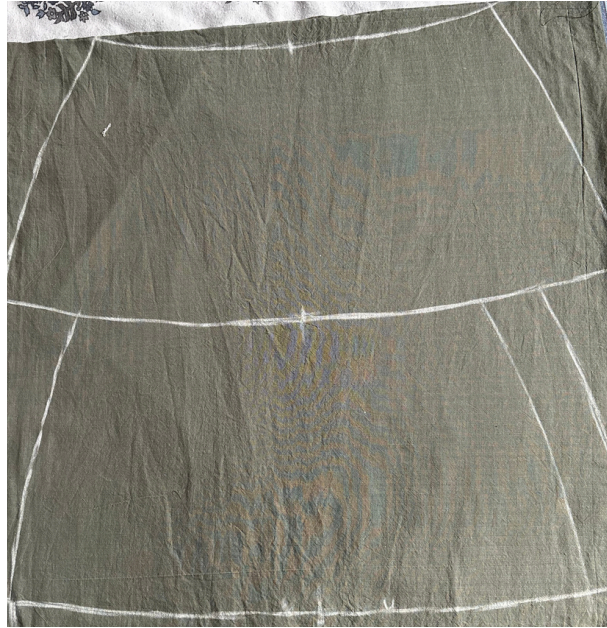
ruffled bottom

multiple ties









Adjustable lacing at the back



Adjustable sleeves



Tailoring Details



Cotton Crochet Lace between panels



Invisible hand-stitching for hem



No exposed seams along the torso, fully lined top

Adjustable Waist



Invisible hand-stitching for hem





Adjustable Lace-up back panel



Adjustable drawstring bust



Circular pattern for flare at the front



Completely reversible and adjustable skirt, no exposed seams



Trial



Trial

