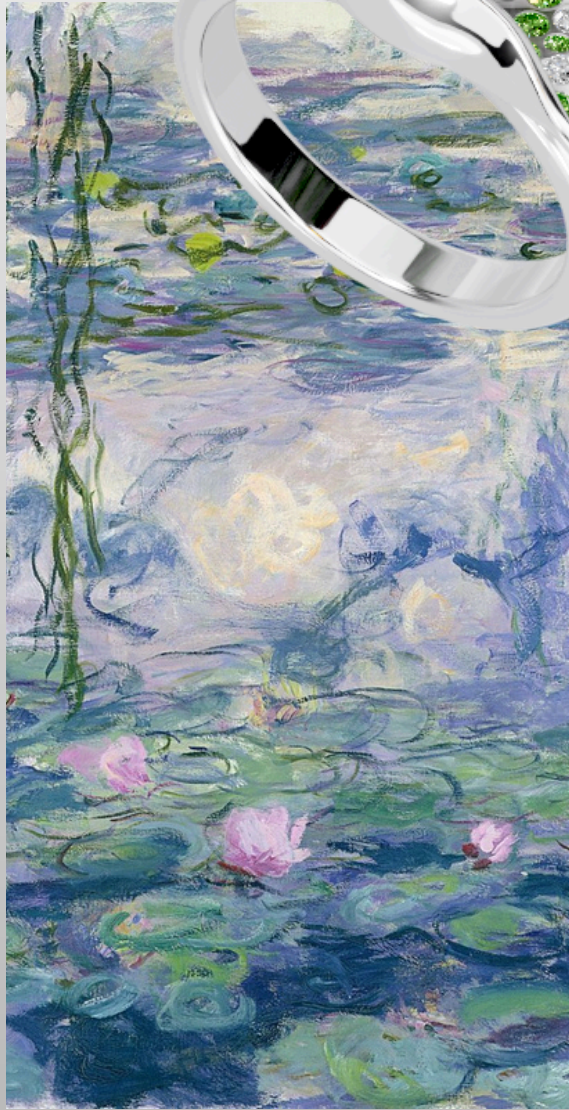
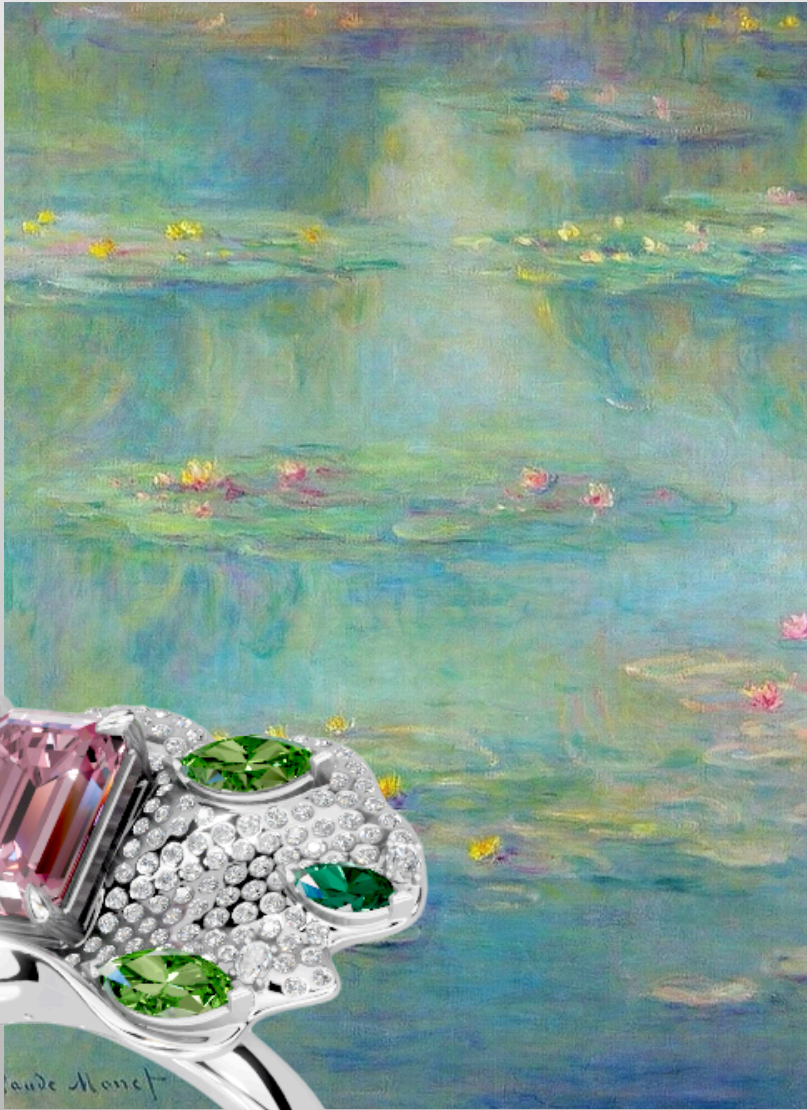


Whisper of Water Lilies



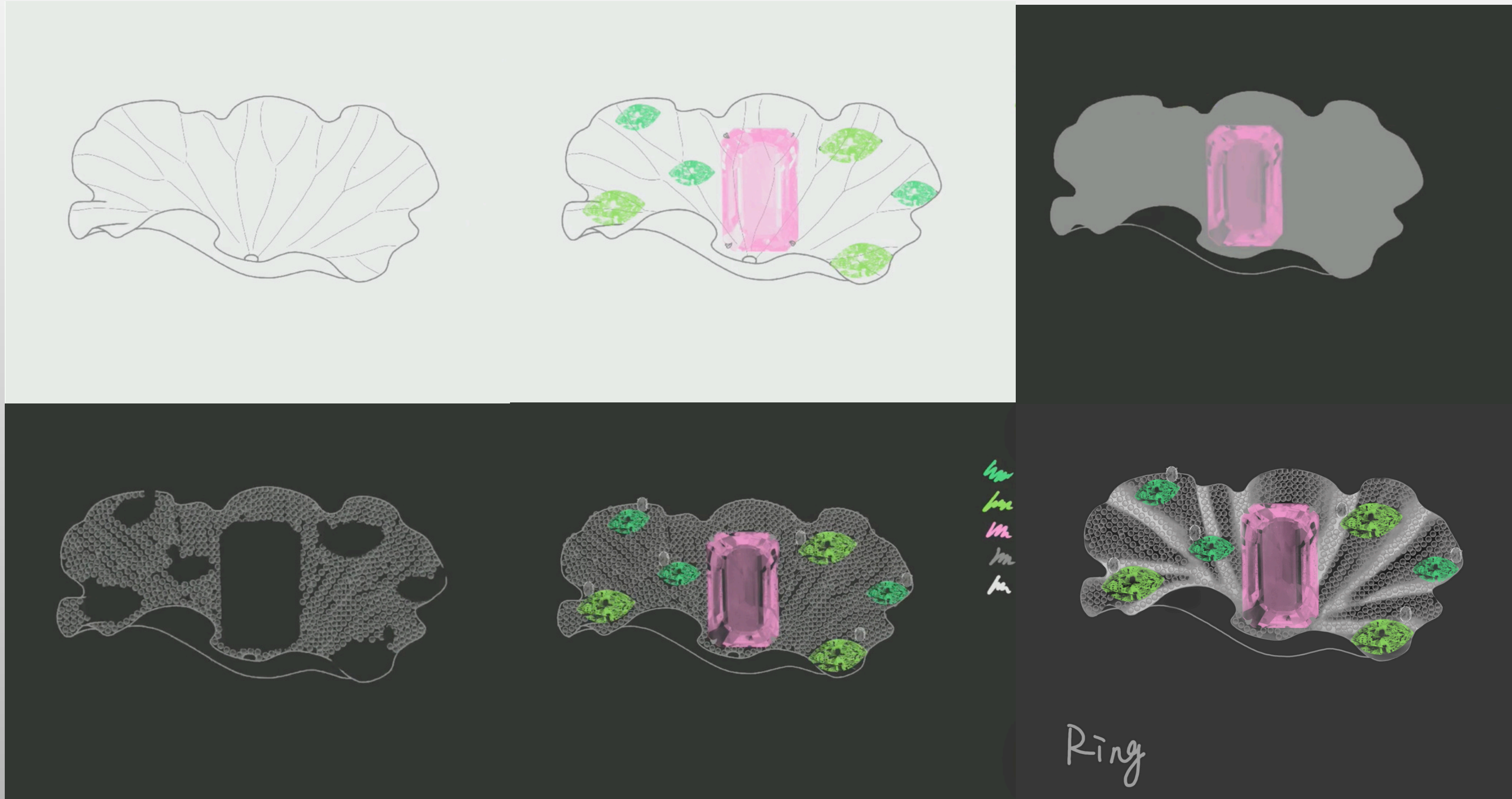
Inspired by the tranquil water lily ponds painted by Monet. The artist captured the fleeting flow of light and colour, and this ring, with gemstones and metal, captures that gentle light and shadow on the finger.

The ring is shaped like a lotus leaf. The pink diamonds resemble the first rays of light emerging from the water at dawn, while the green gemstones reflect the floating leaves and the gentle breeze in the pond. The diamonds' shimmer resembles the ripples on the water, gently swaying in the light.

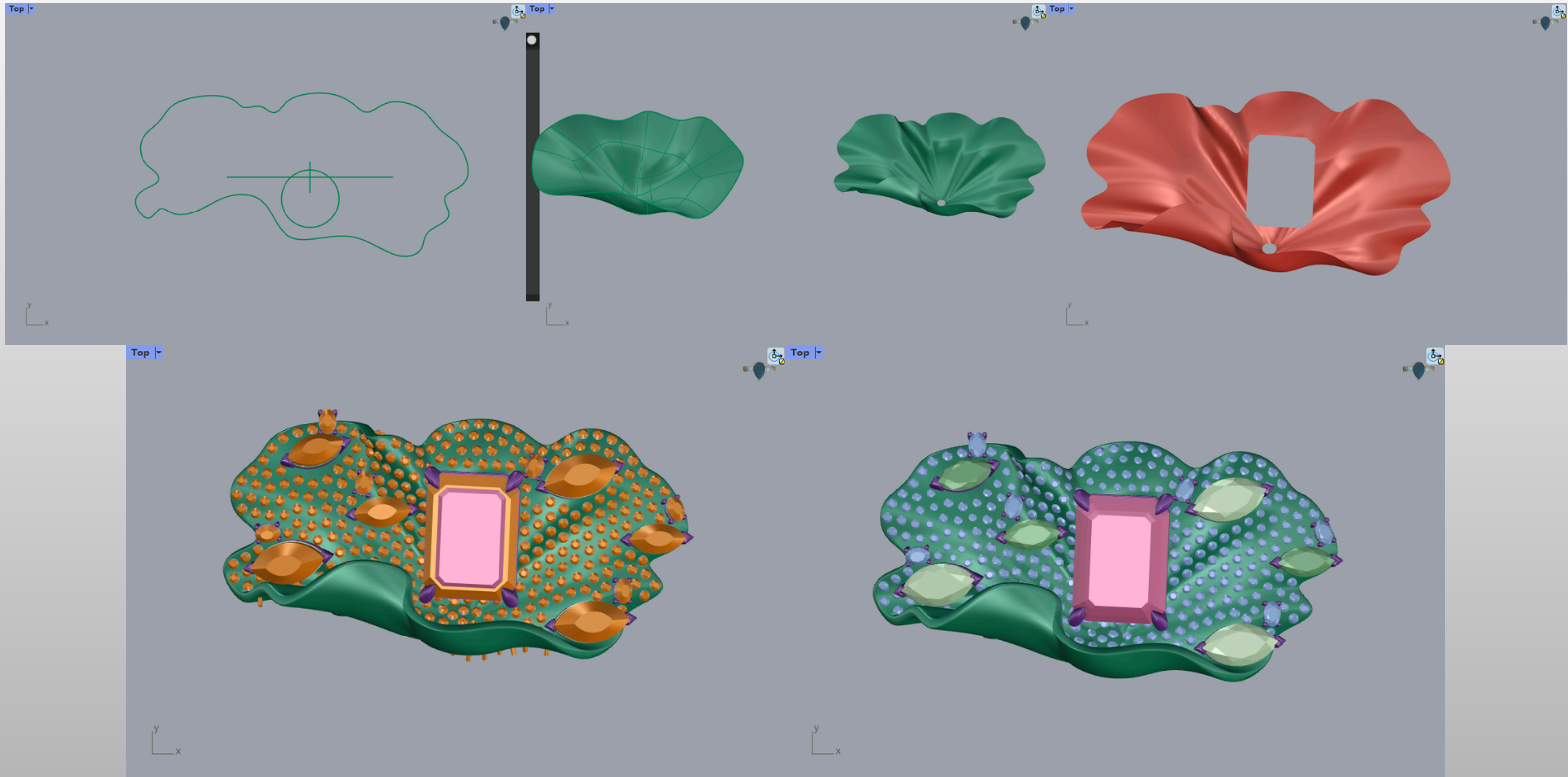
"Whisper of the Water Lilies" symbolises inner peace and gentle strength. It reminds the wearer that, amidst the hustle and bustle, one can remain as calm as water and as vibrant as a flower.



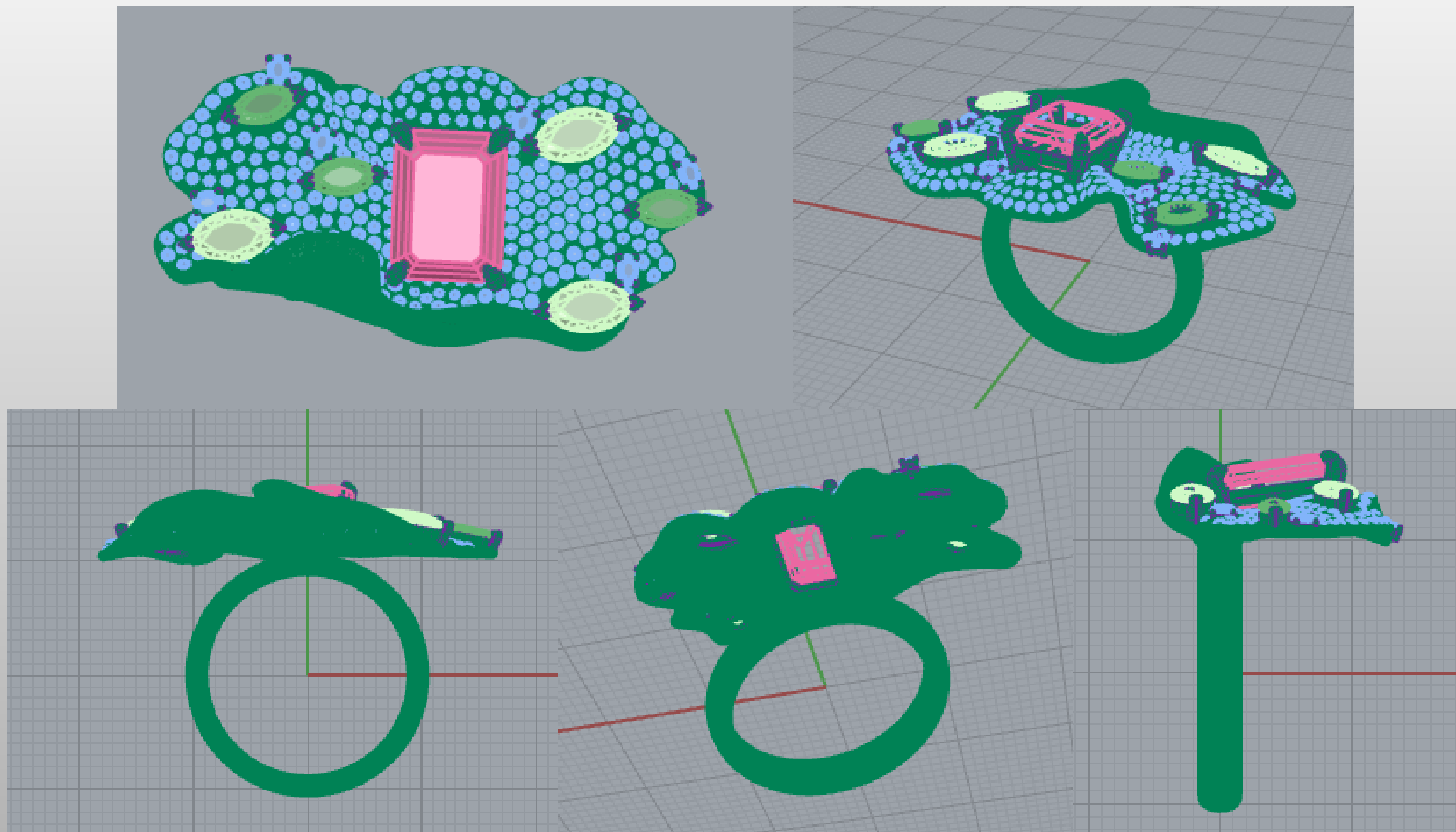
Drawing process



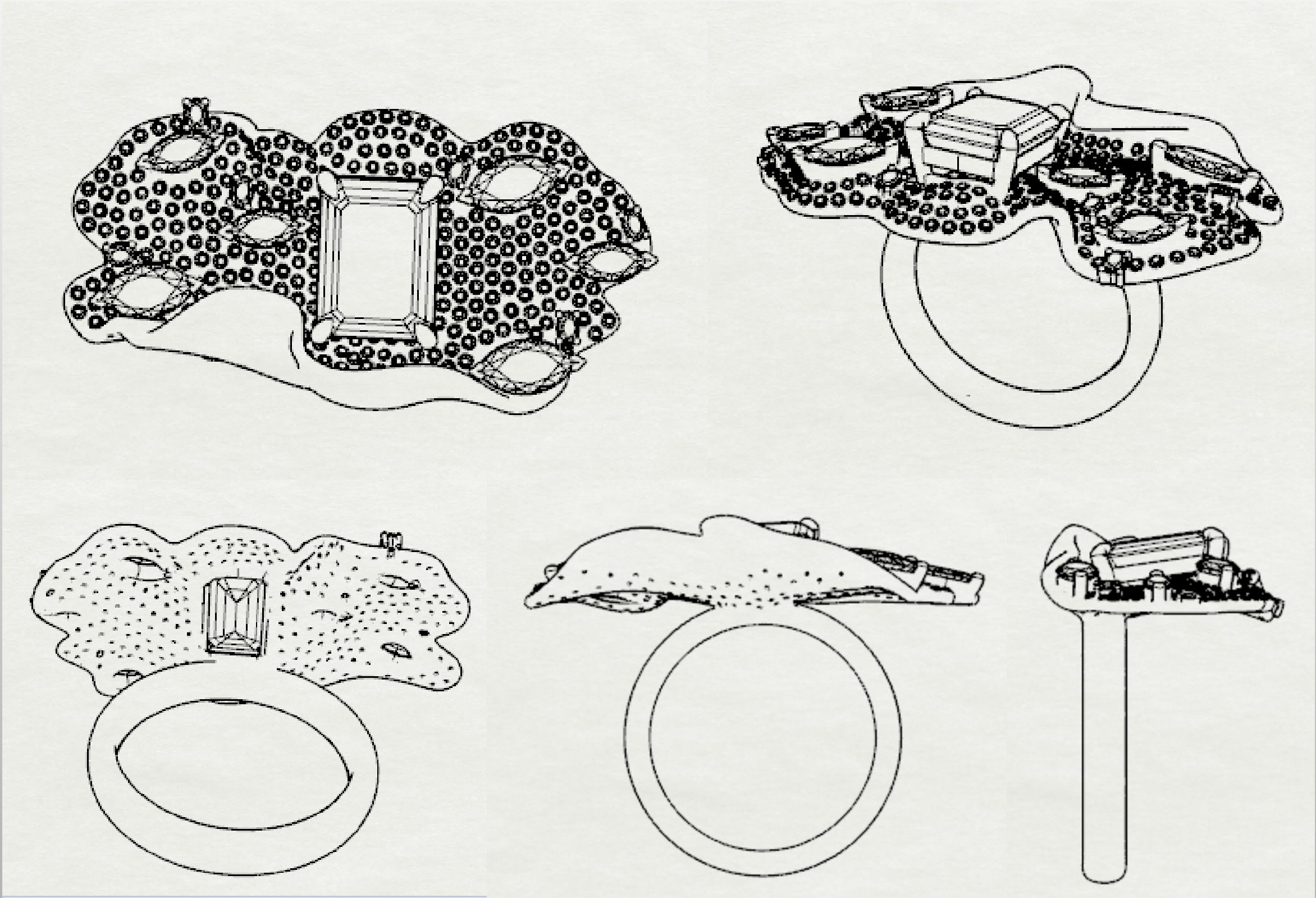
3D Modeling Process Overview



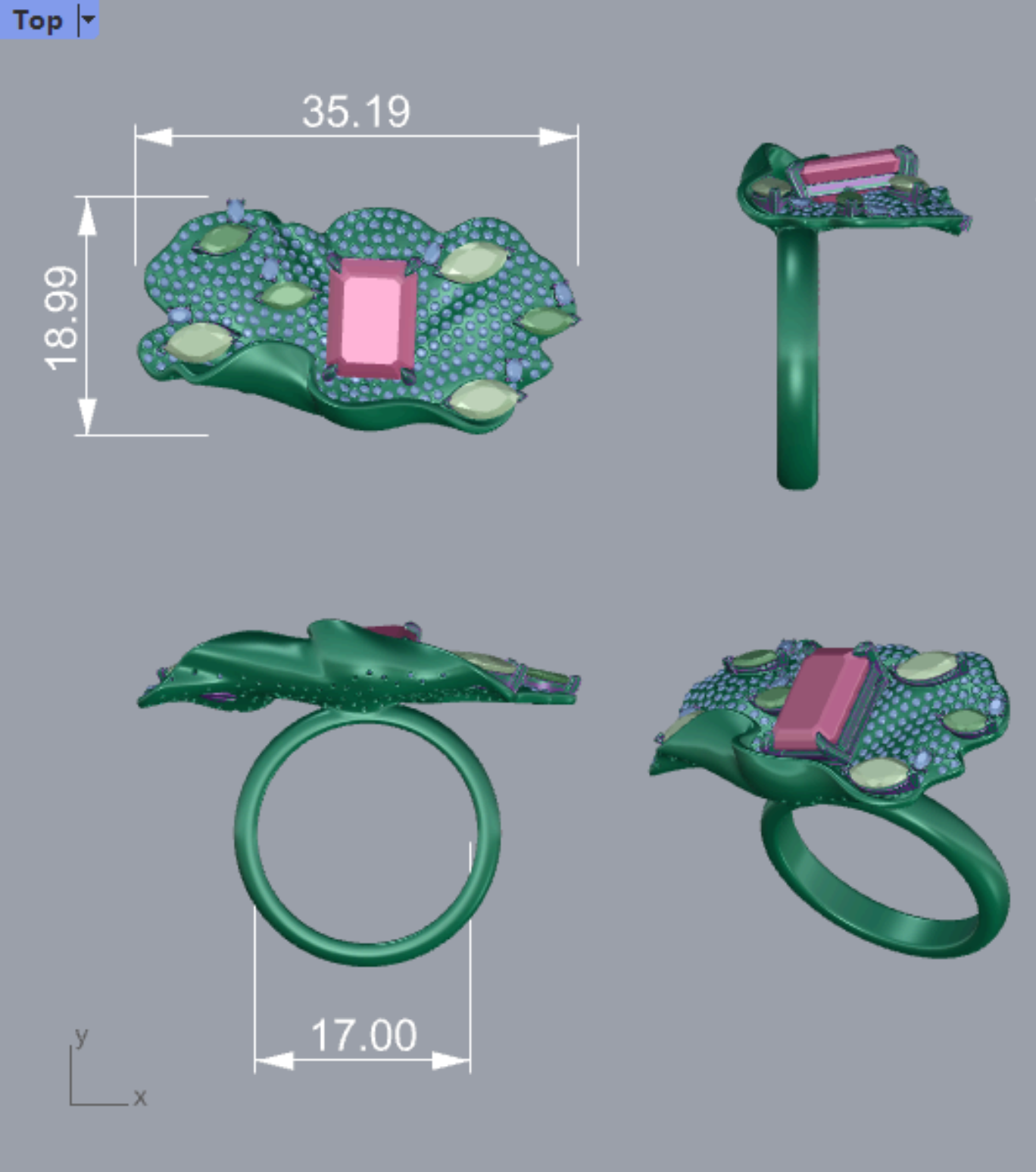
Final Modelling



Full views in pen effect.



Jewellery size and number of diamonds.



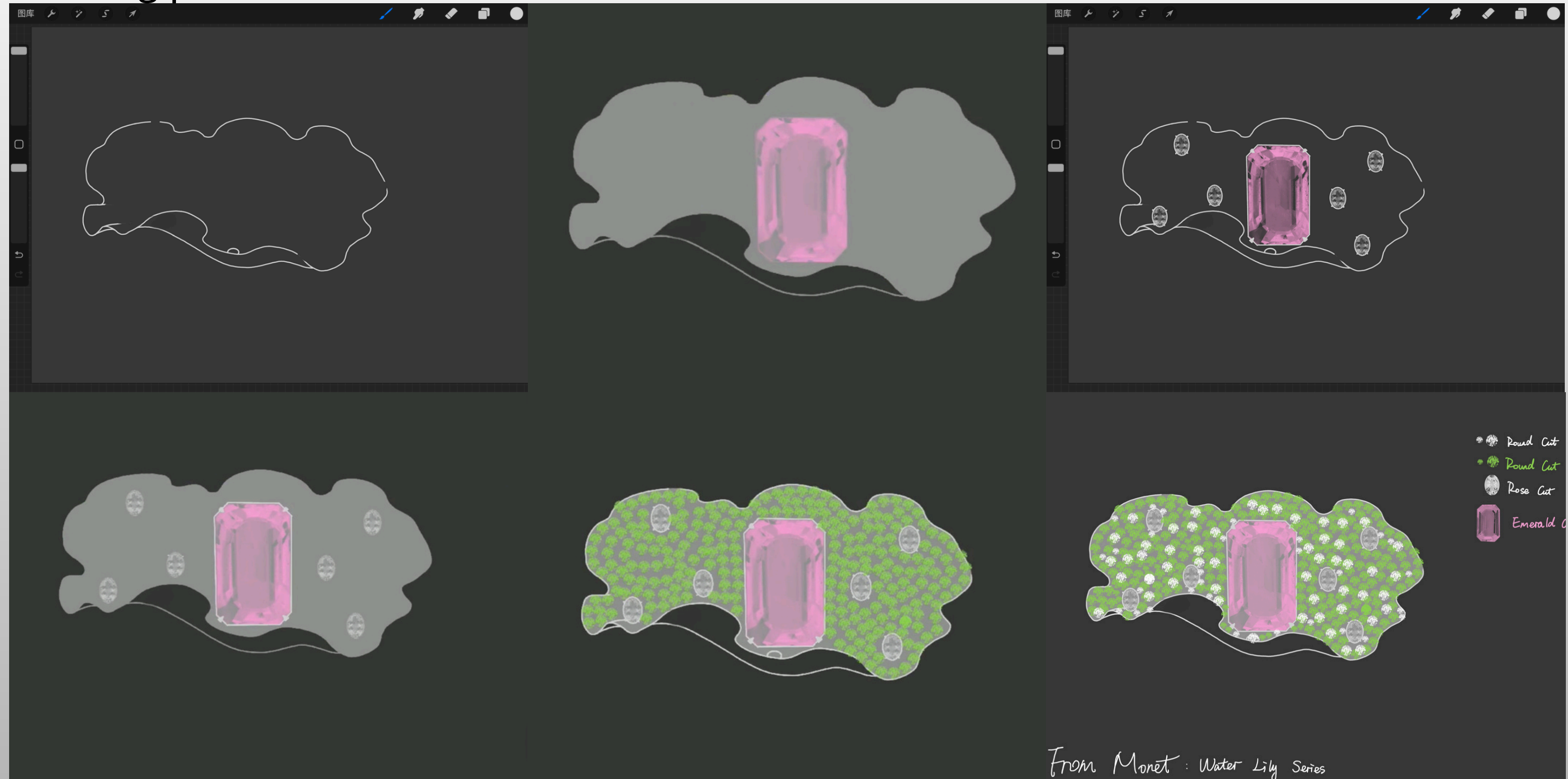
Stone	Size (mm)	Quantity
Grandmother Cut (Pink)	7×9.5	1
Oval (White)	1.32×1.91	6
Round (White)	0.8	288
Marquise (Dark Green)	2.3×4.5	3
Marquise (Light Green)	3.2×5.9	3

Jewellery Rendering

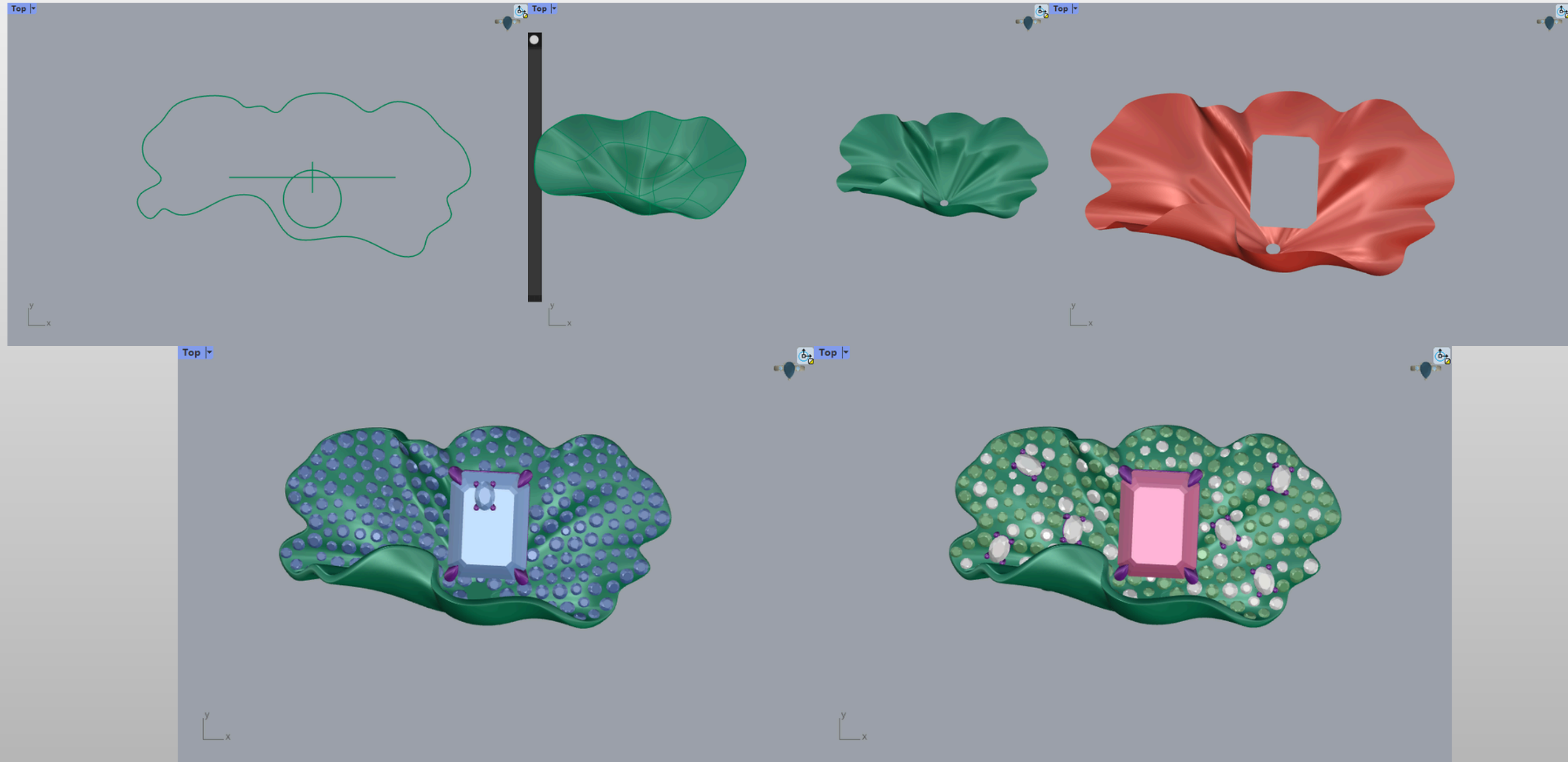


3.3.2 Design 05 - Lotus leaf - Ring 02

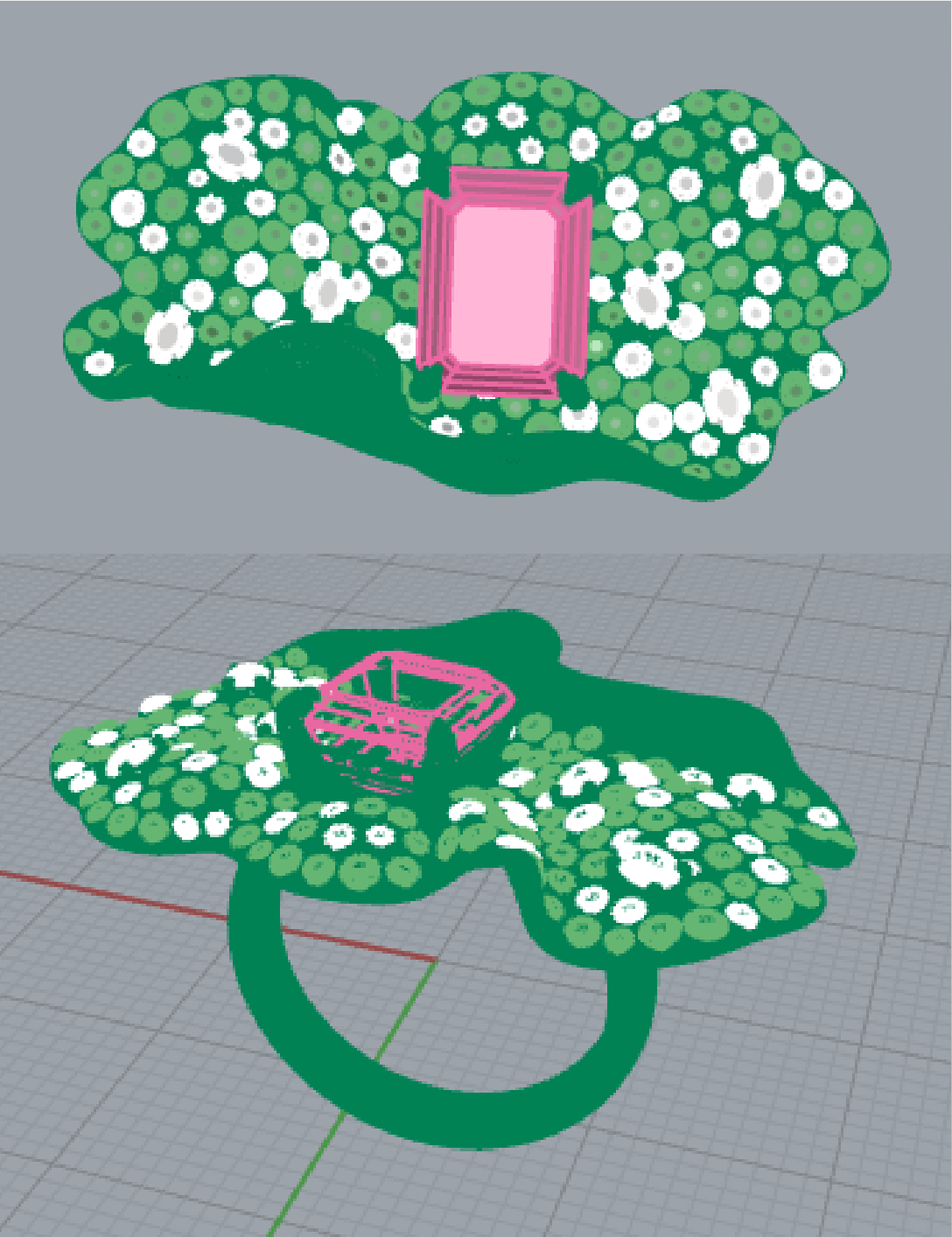
Drawing process



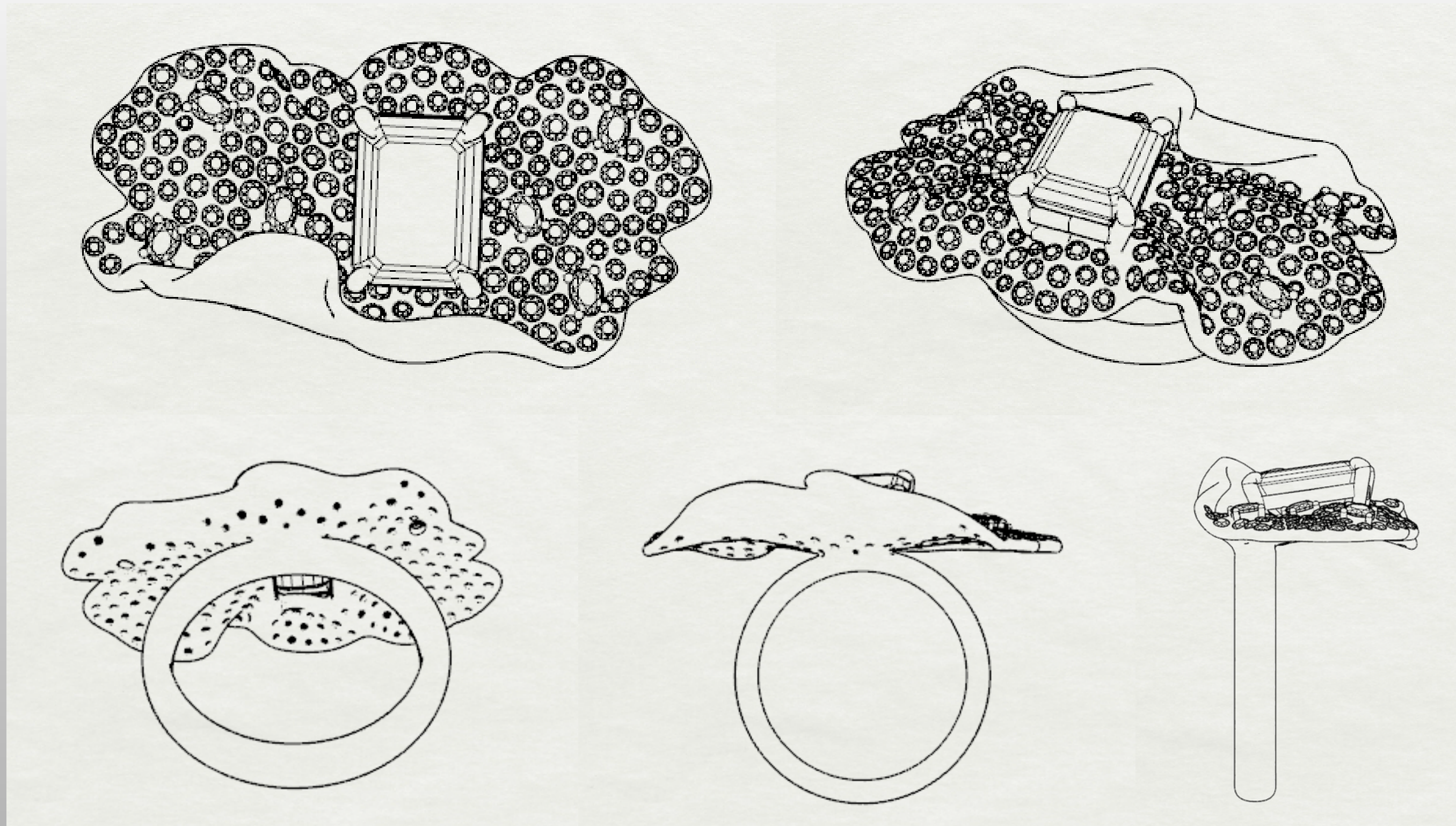
3D Modeling Process Overview



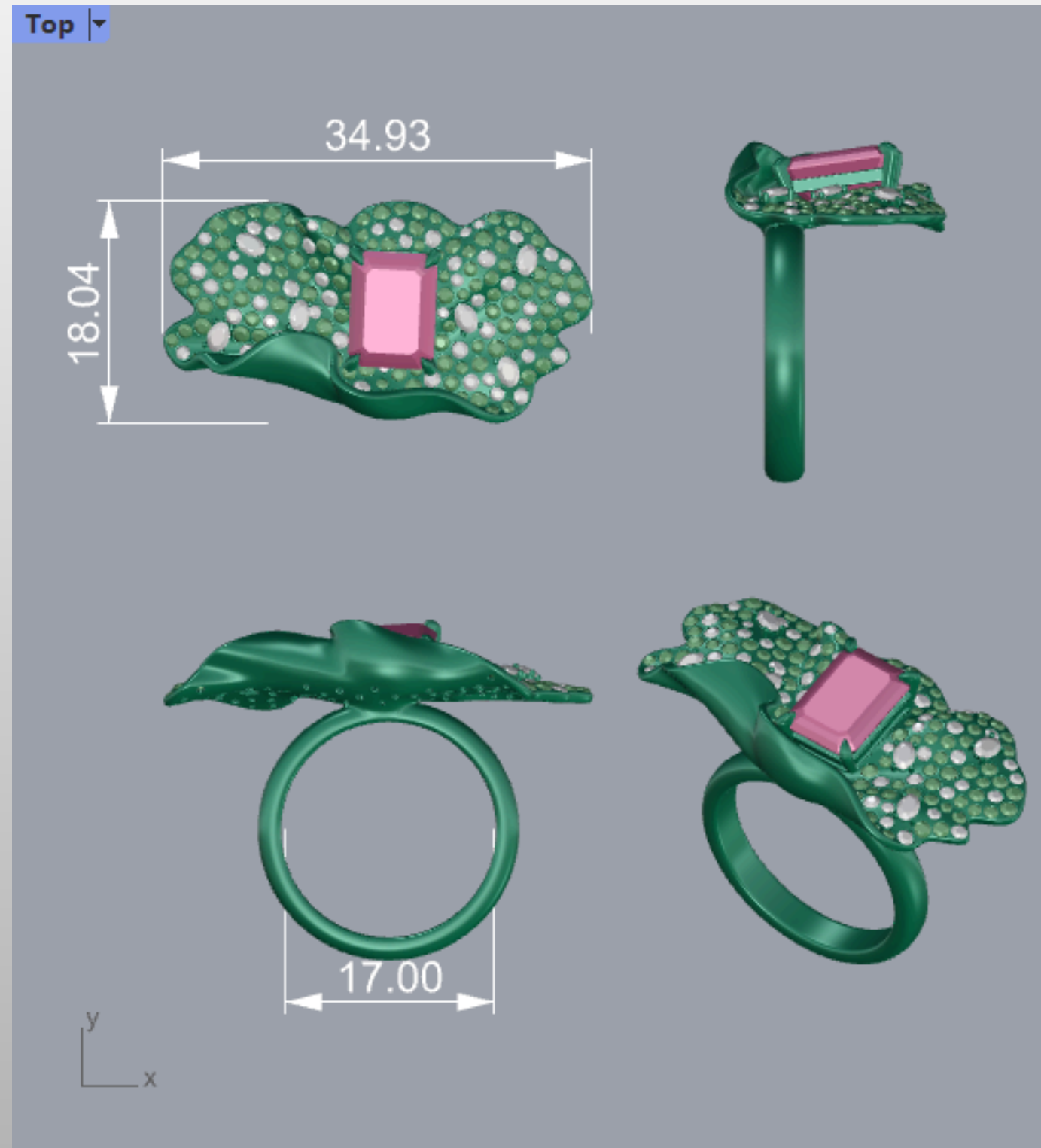
Final Modelling



Full views in pen effect.



Jewellery size and number of diamonds.



Stone	Size (mm)	Quantity
Grandmother Cut (Pink)	7×9.5	1
Oval (White)	1.8×2.6	6
Round (White)	1.0	5
Round (White)	1.1	3
Round (White)	1.15	1
Round (White)	1.2	9
Round (White)	1.25	7
Round (White)	1.3	4
Round (White)	1.35	4
Round (White)	1.4	7
Round (White)	1.45	6
Round (White)	1.45	5
Round (White)	1.5	5
Round (Green)	1.0	14
Round (Green)	1.1	14
Round (Green)	1.15	6
Round (Green)	1.2	13
Round (Green)	1.25	15
Round (Green)	1.3	5
Round (Green)	1.35	14
Round (Green)	1.4	11
Round (Green)	1.45	5
Round (Green)	1.5	15

Jewellery Rendering

