

Zeming.Chen 9/17/2025

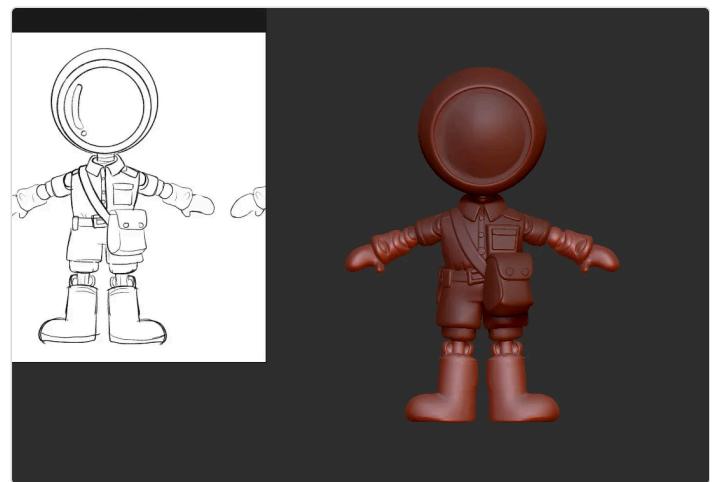
Master Project

ZEMING CHEN 9/17/25 6:11下午
Pitch PRE
♡ 0 ◻ 0

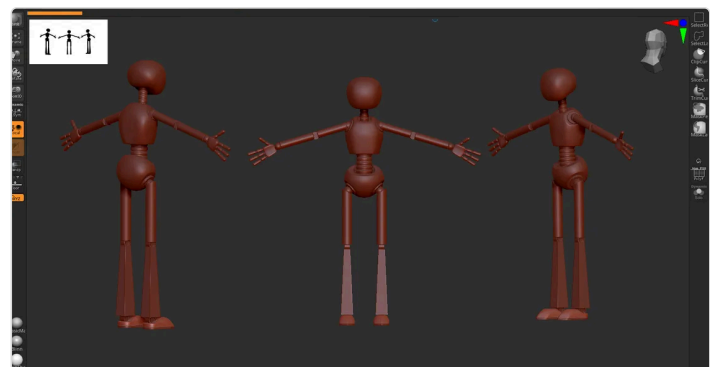


inbox () ppt

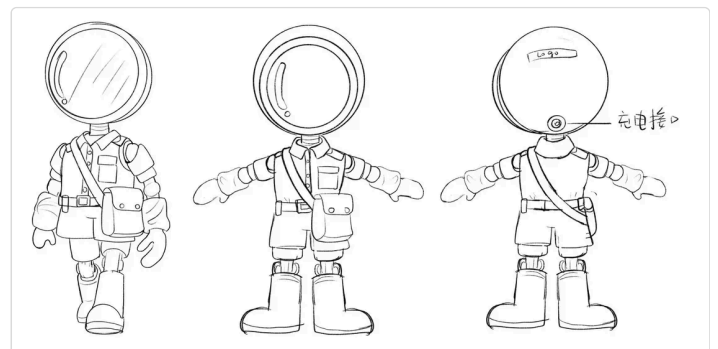
ZEMING CHEN 9/17/25 6:20下午
Robot A
♡ 0 ◻ 0



ZEMING CHEN 9/17/25 6:20下午
Robot B
♡ 0 ◻ 0



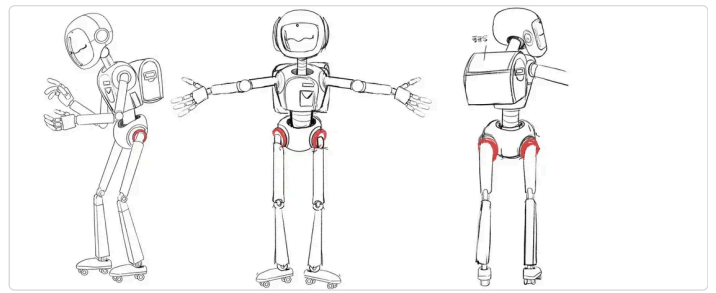
ZEMING CHEN 9/17/25 6:21下午
Robot A
♡ 0 ◻ 0



⇒ ZEMING CHEN 9/17/25 6:27下午

Robot B

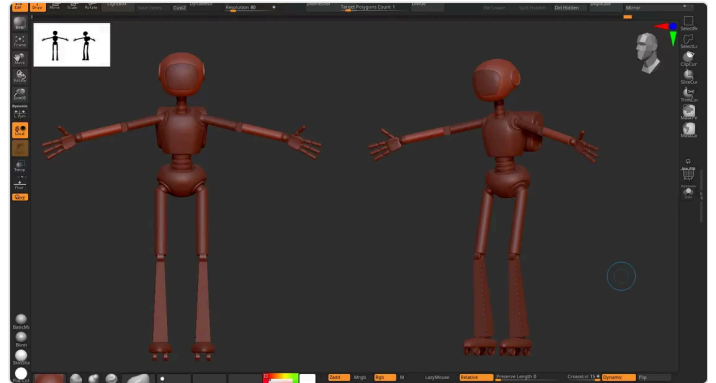
♡ 0 🗨 0



⇒ ZEMING CHEN 9/17/25 6:28下午

Robot B after adjusting

♡ 0 🗨 0



⇒ ZEMING CHEN 9/17/25 6:31下午

Development Process

♡ 0 🗨 0

Creative concept

Consciousness Post Office - Dream Retrieval - Visual Memory Fragments - Self-Archive - Forgotten Postage
 A malfunctioning consciousness post office. At night, it retrieves dream fragments. One robot glitches after reading a forgotten letter—what unfolds is a visual archive stitched from memory and emotion.

Theoretical framework

1. *Hito Steyerl - The Poor Image*
 Inspired by Hito Steyerl's *poor image*, the robot doesn't archive crisp, clean data—it clings to blurred, broken scraps of childhood: corrupted but alive.
2. *Jacques Derrida - Archive Fever*
 Derrida sees memory as a selective archive. In this story, the post office is that system. But one robot rebels—choosing to save what should have been erased.
3. *Posthumanism - Automated Consciousness*
 In a posthuman world, memory is automated. But when the robot glitches, its mechanical rhythm becomes a dream—suggesting identity still lingers in the code.
4. *Marianne Hirsch - Politics of Memory*
 Hirsch reminds us that images don't just reflect the past—they shape who we are. When the robot fixates on that childhood photo, it begins to reconstruct itself.

Storytelling

During the day, the post office hums—a flawless routine of sorting, cleaning, deleting.
 But when night comes, the robots enter dream mode. One reads a letter unlike any other: a faded photo with a child's face.
 Something cracks.
 It reads it again. Then again. The system stutters.
 Fragmented dreams flood in—images of hands, laughter, water, sky. The robot begins to feel.
 But memory is dangerous. The system sends a cleaner to reset the glitch.
 Padlet Drive ⇌ *ot compresses the dream into a hidden file. ts it—and dreams begin again.*

inbox

⇒ ZEMING CHEN 9/17/25 6:44下午

Development Process

♡ 0 🗨 0

Inbox ()

Project Title: INBOX
 A short film exploring memory through a fictional postal system inside the human brain.

In today's age of digital overload, memory has become fragmented and uncertain. Instead of portraying it as abstract dreams or voiceover monologues, this project uses a **concrete system** — a stylised post office run by four robots — to visualise how memories are stored, accessed, and sometimes lost. This structured metaphor turns the invisible workings of our mind into a physical, cinematic space.

I imagine my brain as a post office — a place that **receives, sorts, archives, and sometimes loses memories**. Just like a post office handles thousands of letters every day, our minds are constantly **processing information**, deciding what to keep, what to throw away, and what gets delayed or forgotten.

Some memories are like **priority mail** — vivid, important, and always accessible. Others are **lost in transit**, or stuck in a drawer somewhere, never opened again.

In this film, the post office becomes a metaphorical space inside the brain — a place where robots manage memory like postal workers. But what happens when one of them **refuses to throw something away**? What if a memory — like an old photo — insists on being remembered?

Padlet Drive ⇌ ual:

(已压缩) inbox process

⇒ ZEMING CHEN 9/17/25 6:58 下午

words scripts

♡ 0 0 0

Inbox ()

Total duration: 3-4 minutes
Visual style: AI animation + 3D modeling combined
Core premise: Through the changing color and size of a single garment, we mirror a person's consciousness being managed by a system, with emotions layering progressively. The film is structured around a "postal system" of operations; the real-world segments serve as the on/off boundary of the system.

Story Summary

The film begins on an ordinary morning. The protagonist wakes, gets up, walks to the wardrobe, and their fingers touch a neutral, minimalist long coat. In that instant, the image cuts into a vast, austere "postal system" — a mechanical space that symbolizes the brain.

Here, two postal robots receive, sort, and archive the coat. Each time the coat appears, its color, size, and texture change — from industrial steel-blue-gray, gradually to faded beige-gray, and finally to deep brown blood-red or forest dark ink-green, until it loosens into a formless pale pink-mist white.

Behind each change in the coat, flashes of real life appear: kitchen, windows, everyday details — but these details are gradually altered, even completely misplaced.

As the system shifts from "offset" to "collapse," the robots begin to move with delay and hesitation; background images flicker and tear; lighting loses control. In the end, the coat is stored away, a drawer closes, the postal lights fade out. The protagonist returns to reality, gently touching the coat at their side — it's the original one, as if nothing happened.

Black screen. Only breathing. End.

Core Theme

Tied to the initial research question, "How do contemporary practices of digital archiving influence the way we remember, forget, and represent ourselves through fashion?", the film conveys a direct yet philosophical idea.

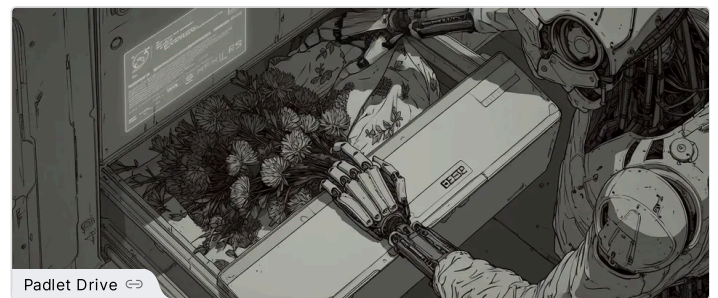
Padlet Drive ⇄

scripts

⇒ ZEMING CHEN 9/17/25 6:59 下午

AI prompt test

♡ 0 0 0



e

⇒ ZEMING CHEN 9/17/25 6:59 下午

AI prompt test

♡ 0 0 0



y

⇒ ZEMING CHEN 9/17/25 6:59 下午

AI prompt test

♡ 0 0 0

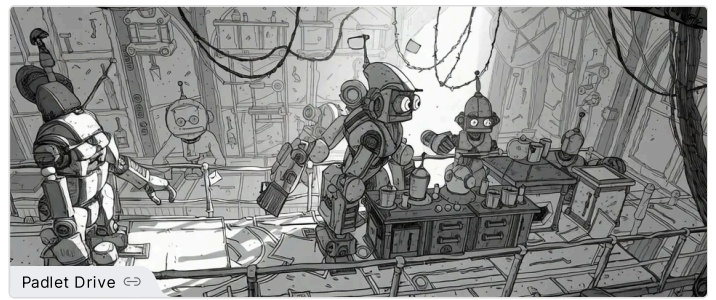


w

⇒ ZEMING CHEN 9/17/25 7:01下午

AI prompt test

♡ 0 🗨 0



t

⇒ ZEMING CHEN 9/17/25 7:05下午

AI prompt test

♡ 0 🗨 0

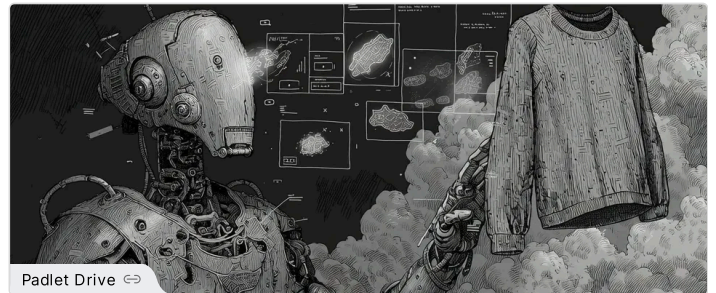


r

⇒ ZEMING CHEN 9/17/25 7:08下午

AI prompt test

♡ 0 🗨 0

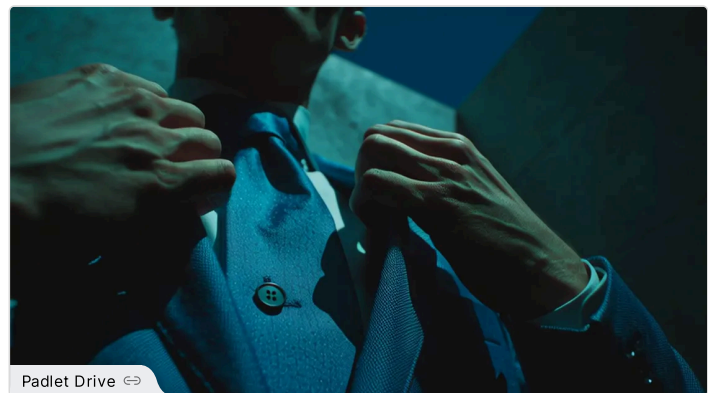


q

⇒ ZEMING CHEN 9/17/25 7:11下午

AI prompt test

♡ 0 🗨 0



social_u2853467384_first_person_POV_adjusting_a_steel-blue_suit_jack_d840cc04-1895-40e1-abba-5bac140df59c_1

⇒ ZEMING CHEN 9/17/25 7:12下午

AI prompt test

♡ 0 ◻ 0



social_u2853467384_first_person_POV_distorted_suit_jacket_flicke
397b-46f9-a359-00eb929ed117_3

⇒ ZEMING CHEN 9/17/25 7:12下午

AI prompt test

♡ 0 ◻ 0



social_u2853467384_first_person_POV_distorted_suit_jacket_flicke
6fb5-4e9d-a9e4-cb80d10a2061_2

⇒ ZEMING CHEN 9/17/25 7:13下午

AI prompt test

♡ 0 ◻ 0



social_u2853467384_first_person_POV_distorted_suit_jacket_flicke
6fb5-4e9d-a9e4-cb80d10a2061_3

⇒ ZEMING CHEN 9/17/25 7:13下午

AI prompt test

♡ 0 🗨 0



social_u2853467384_first_person_POV_distorted_suit_jacket_flicke
f127-47ba-bb08-4ffe9efd017_1

⇒ ZEMING CHEN 9/17/25 7:14下午

AI prompt test

♡ 0 🗨 0



social_u2853467384_first_person_POV_distorted_suit_jacket_flicke
f127-47ba-bb08-4ffe9efd017_3

⇒ ZEMING CHEN 9/17/25 7:14下午

AI prompt test

♡ 0 🗨 0

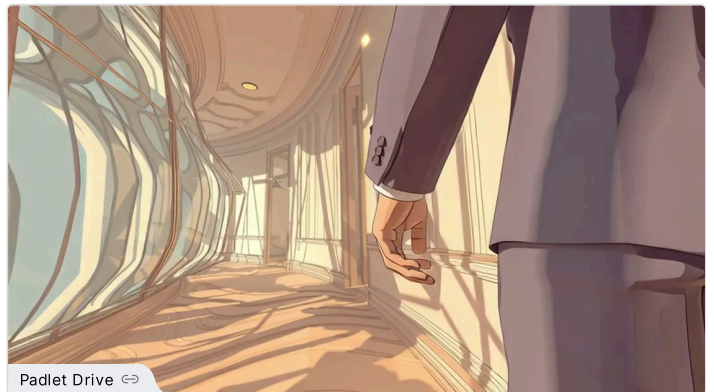


social_u2853467384_over-
shoulder_view_of_a_stylized_3D_cartoon_young_69c9b6ee-3be3-
4cb9-9b3b-d8b37b9b6fcf_3

⇒ ZEMING CHEN 9/17/25 7:14下午

AI prompt test

♡ 0 🗨 0



Padlet Drive ⇒

social_u2853467384_stylized_3D_cartoon_POVover-shoulder_walking_from_cd73d002-e686-4009-a8ac-1fb55335ac7b_3

⇒ ZEMING CHEN 9/17/25 7:16下午

AI prompt test

♡ 0 ◻ 0

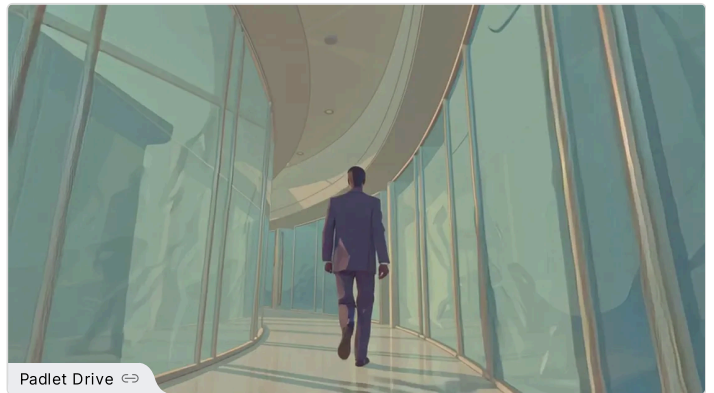


social_u2853467384_stylized_3D_cartoon_POVover-shoulder_walking_from_b4ac9d74-4f40-4600-81a5-c40d4db58541_1

⇒ ZEMING CHEN 9/17/25 7:17下午

AI prompt test

♡ 0 ◻ 0



social_u2853467384_stylized_3D_cartoon_POVover-shoulder_walking_from_3e39d606-2bb8-4deb-a600-8b9bc4305af5_2

⇒ ZEMING CHEN 9/17/25 7:17下午

AI prompt test

♡ 0 ◻ 0

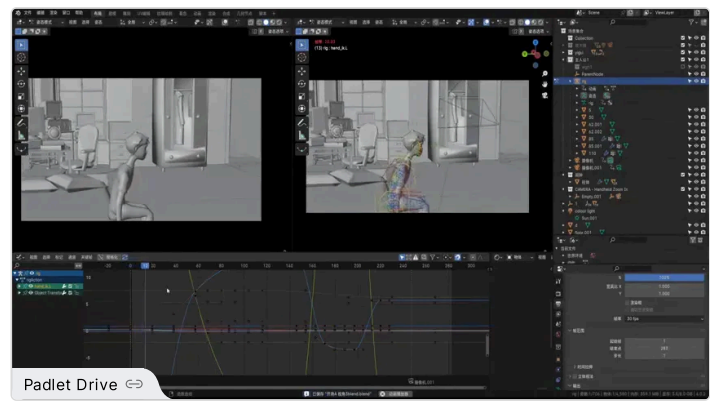


social_u2853467384_over-shoulder_view_of_a_stylized_3D_cartoon_young_33973681-9ec5-46c3-885a-f2852efc1a3b_1

⇒ ZEMING CHEN 9/17/25 7:18下午

3d test process

♡ 0 0

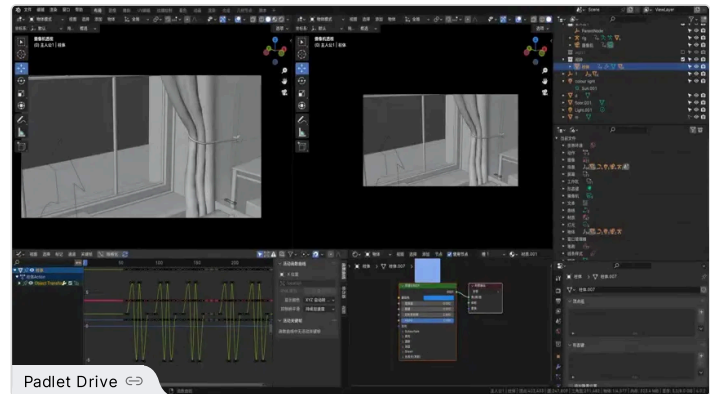


3d progress 1

⇒ ZEMING CHEN 9/17/25 7:18下午

3d test process

♡ 0 0

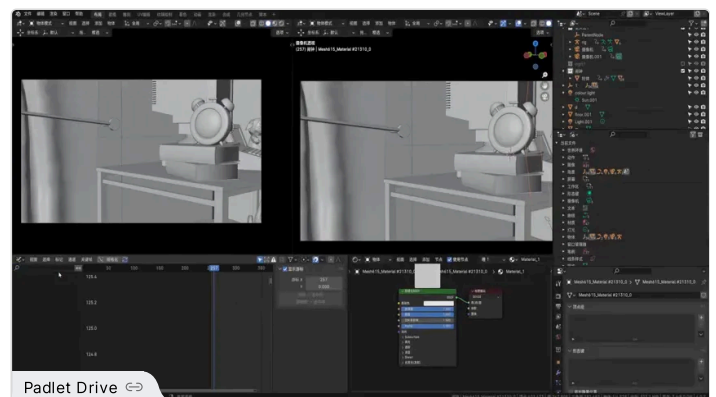


3d progress 2

⇒ ZEMING CHEN 9/17/25 7:19下午

3d test process

♡ 0 0



3d progress

⇒ ZEMING CHEN 9/17/25 7:25下午

Prompt test collections

- 1.stylized 3D cartoon POV/over-shoulder walking from restroom into a minimalist office corridor with glass panels, suit sleeve in frame, walls gently bending like waves, reflections soft and clean, soft area lights, smooth NPR toon shading, matte materials, muted palette, elegant surreal distortion
- 2.over-shoulder view of a stylized 3D cartoon young man at an office restroom sink, steel-blue suit jacket on, facing a rectangular black mirror, grey square tiles, white ceramic basin, ceiling strip light, soft area lighting, smooth NPR toon shading, matte materials, muted pastel palette, clean geometry, gentle depth of field
- 3.stylized 3D cartoon POV/over-shoulder walking from restroom into a minimalist office corridor with glass panels, suit sleeve in frame, walls gently bending like waves, reflections soft and clean, soft area lights, smooth NPR toon shading, matte materials, muted palette, elegant surreal distortion
- 4.stylized 3D cartoon office desk scene, same suit slumping into chair, desk lamp on, background gradually desaturating; the suit softly breaking into pale mist at the collar, objects simplifying into flat shapes, smooth NPR toon shading, matte materials, muted pastels, quiet dreamlike fade-out
- 5.stylized 3D cartoon office desk scene, same suit slumping into chair, desk lamp on, background gradually desaturating; the suit softly breaking into pale mist at the collar, objects simplifying into flat shapes, smooth NPR toon shading, matte materials, muted pastels, quiet dreamlike fade-out
- 6.over-shoulder view of a stylized 3D cartoon young man at an office restroom sink, steel-blue suit jacket on, facing a rectangular black mirror, grey square tiles, white ceramic basin, ceiling strip light, soft area lighting, smooth NPR toon shading, matte materials, muted pastel palette, clean geometry, gentle depth of field
- 7.first person POV, suit jacket dissolving into pale white mist, office fading into blank emptiness, stylized cartoon character design, NPR anime cel shading, clean bold outlines, flat pastel colors, simplified details, 3D toon shading style, dreamlike surreal fade-out atmosphere
- 8.first person POV, wearing a faded gray suit jacket in the same minimalist office, documents on desk blurred, cold gray light through the windows, stylized cartoon character design, NPR anime cel shading, clean bold outlines, flat pastel colors, simplified details, 3D toon shading style, surreal uncanny atmosphere
- 9.first person POV, adjusting a steel-blue suit jacket in soft morning sunlight, minimalist office background, stylized cartoon character design, NPR anime cel shading, clean bold outlines, flat pastel colors, simplified details, 3D toon shading style, soft hand-painted textures, expressive cartoon eyes, dreamlike but clear atmosphere
- 10.first person POV walking through a minimalist office corridor, walls bending slightly like waves, suit sleeve visible in frame, NPR anime cel shading style, sharp outlines, pastel tones with abstract distortions, dreamlike surreal atmosphere

- 11. POV looking into a tall mirror, adjusting the suit jacket, reflection slightly misaligned, colors gently shifting, NPR anime cel shading, clean line art, subtle distortion, soft muted tones, surreal dreamlike office background
- 12. first person POV, distorted suit jacket flickering in size, luxury office walls bending and stretching, prism light distortions, surreal abstract memory effect, fashion cinematic film look
- 13. first person POV, morning scene, putting on a steel-blue suit jacket in front of a mirror, soft warm sunlight through curtains, wooden floor glowing, realistic fabric folds, sharp focus, crisp clean edges, highly detailed textures, NPR toon shading, cel animation look, soft pastel colors, cinematic wide shot
- 15. first person POV, suit jacket dissolving into glowing white mist, luxury office fading into emptiness, dreamlike surreal atmosphere, abstract cinematic fashion film style
- 16. first person POV, wearing a faded gray suit jacket in the same luxury office, documents blurred, cold unnatural light, uncanny surreal atmosphere, cinematic fashion editorial style, prism reflections
- 17. first person POV, morning scene, putting on a steel-blue suit jacket in front of a mirror, soft warm sunlight through curtains, wooden floor glowing, realistic fabric folds, sharp focus, crisp clean edges, highly detailed textures, NPR toon shading, cel animation look, soft pastel colors, cinematic wide shot
- 18. first person POV, same morning scene, suit jacket dissolving into pale white mist while wearing it, mirror reflection fading away, room turning empty and blank, dreamlike erasure, sharp focus, crisp clean edges, highly detailed fabric dissolving, NPR toon shading, cel animation look, pale pastel whites and grays, cinematic wide shot
- 19. first person POV, same action putting on a distorted suit jacket in front of the mirror, jacket size flickers larger and smaller, mirror reflection out of sync, wall photo changes into a stranger, lighting flickers unnaturally, surreal glitchy atmosphere, NPR toon shading, cel animation look, cinematic 16:9
- 20. first person POV, same cozy kitchen but details are wrong, coffee mug is blue instead of white, cloudy grey sky outside the window, wall photo blurred and unclear, familiar yet unsettling atmosphere, NPR toon shading, cel animation look, pastel tones with slight distortion, cinematic wide shot

♡ 0 ◻ 0

⇒ ZEMING CHEN 9/18/25 9:53上午

images scripts

♡ 0 ◻ 0



scripts

