

I AM

LANDMINE





Last night
my heart was in disarray—
a mess I couldn't hide.
Maybe...
just maybe
these wounds still haven't healed.



Seems I, too
carry landmines within.



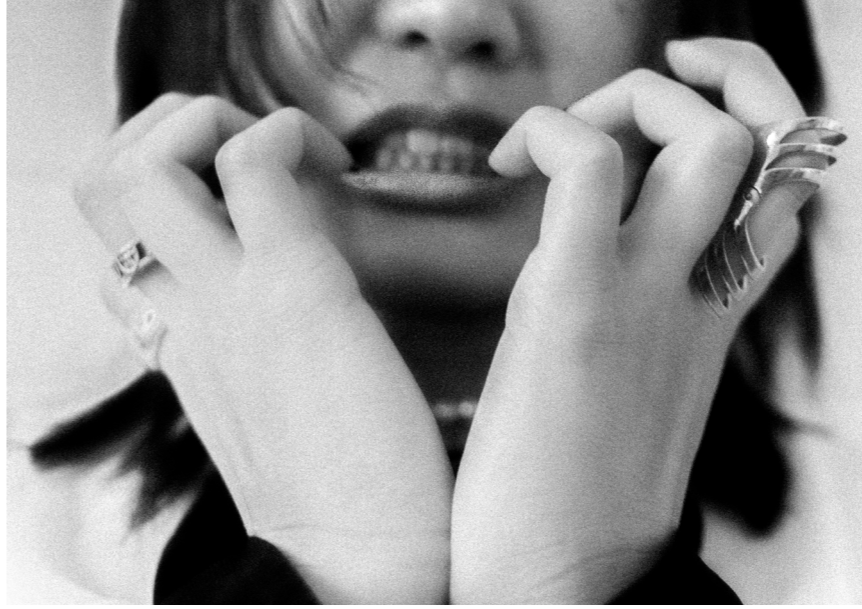




Kawaii?









Though I can polish the surface to a shine
my hands can't quite reach the dust within my heart.



This zine offers a visual exploration of Jirai Kei, a subculture that emerged from Tokyo's Kabukicho area and rose to prominence in the early 2020s. The term "Jirai," meaning "landmine" in Japanese, is a slang expression for someone emotionally unstable, who may suddenly "explode" when triggered. More than just a fashion trend, Jirai Kei represents a deeper psychological and social commentary—a response to a society that has neglected and failed to safeguard its young women.

Photography

Alicia Herrero Rodriguez

Model

Rina Sakurai

Production, Styling, Design

Nonika Wakishima

