

Angela Leng

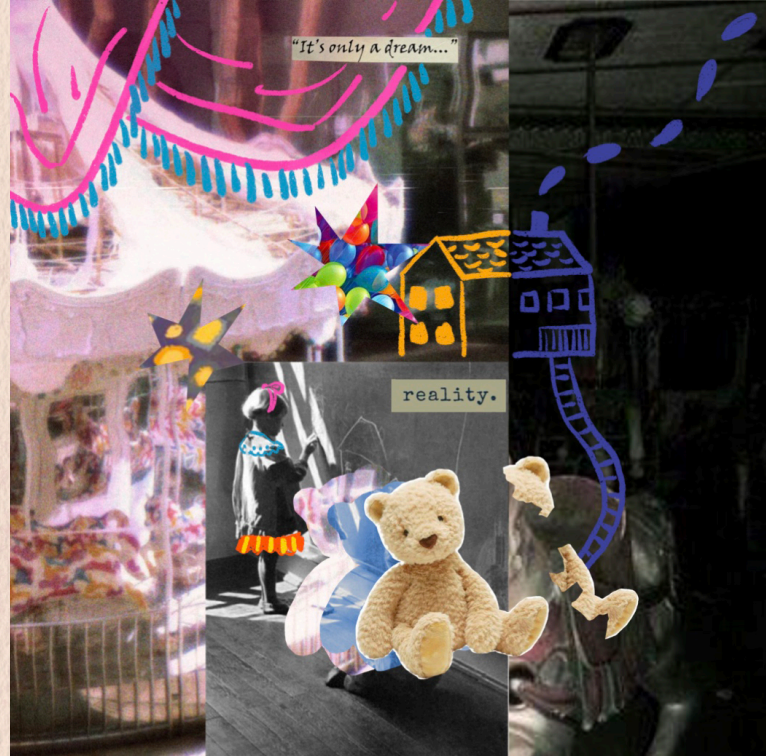
Flicker



"To be nostalgic is to yearn for something that is lost in the past

*Although the past that one longs for may have been as painful as the
present (or even more so)
in a nostalgic sense
these episodes have been somewhat paved over
rendering them pleasant
even ideal."*

— Kristine Keller

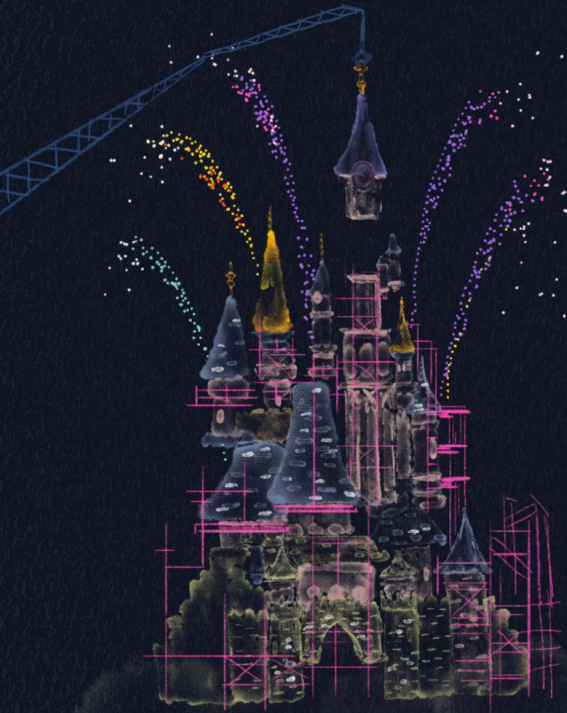


For a child, the simulation of Disneyland is often accepted without question. But as people grow older, they begin to recognize the “magic” as a manufactured illusion.

This realization mirrors how childhood memories, once vivid and emotionally charged become filtered through adult understanding.

The park that once felt alive and limitless is now seen as a carefully controlled space—a theme park as simulacrum, as theorist Jean Baudrillard might describe it.





"It was stepping into a dream

going from one land to the next was like making a motion picture dissolve

and that everything was thought of cinematically

It's an extraordinary experience that happened to you

You're moved by it, like a good movie moves you

It's not just intellectual, or it doesn't just make sense

You're actually changed or transformed by the end of the film"





Childhood

Simpler times

Imagination

Innocence

Conceal



It's all choreographed.



The camera is the viewer.



"While there is very little grown-up in a child

there's a lot of child in every grown-up"

Bibliography

Iwerks, L. (2019). The Imagineering Story [TV series]. Iwerks & Co. Available on Disney+.

Keller, K., 2011. Nostalgia Culture in Disneyland. California State University Northridge, December.