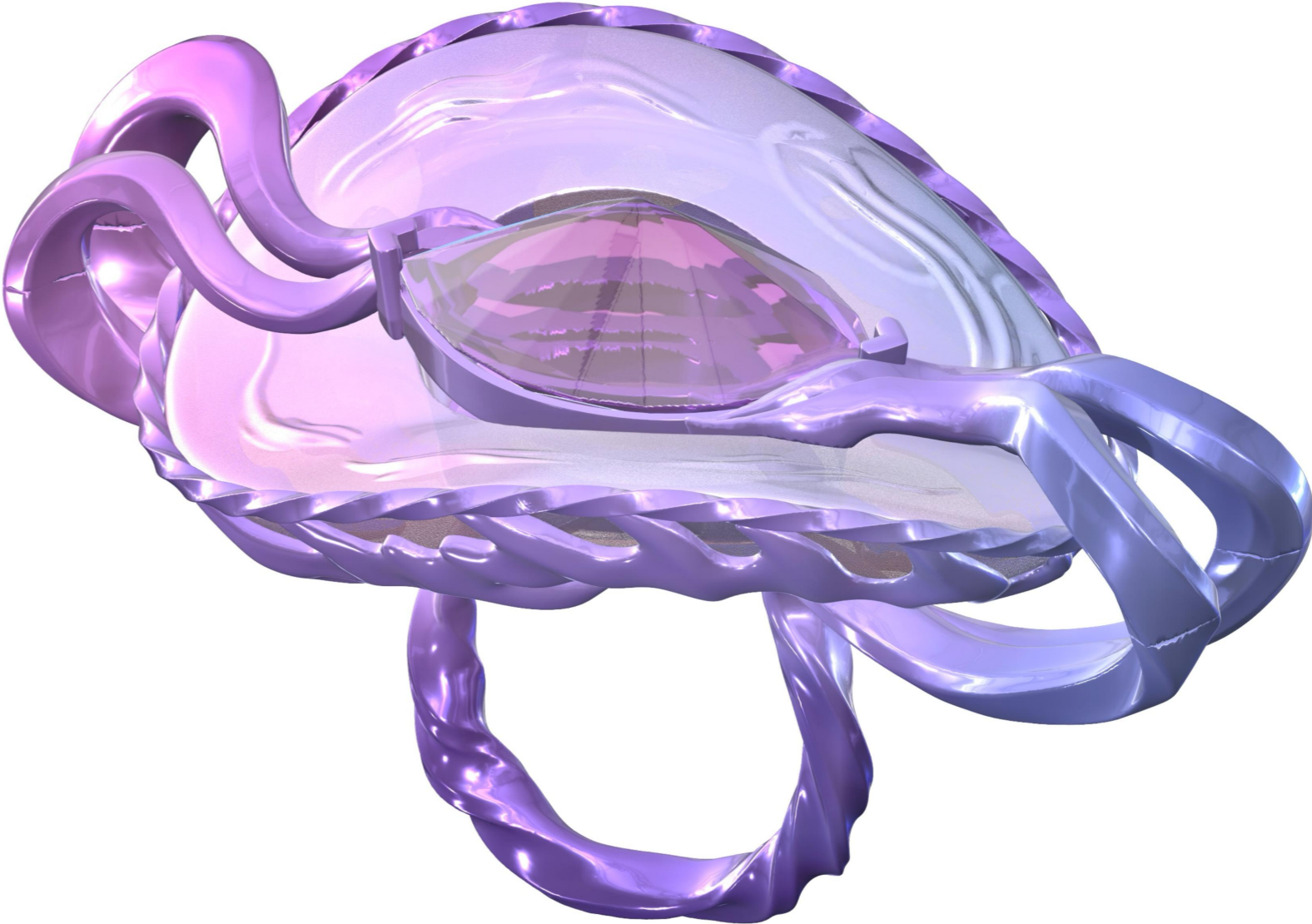


**JEWELLERY**

**DESIGN PROCESS**

# Ring

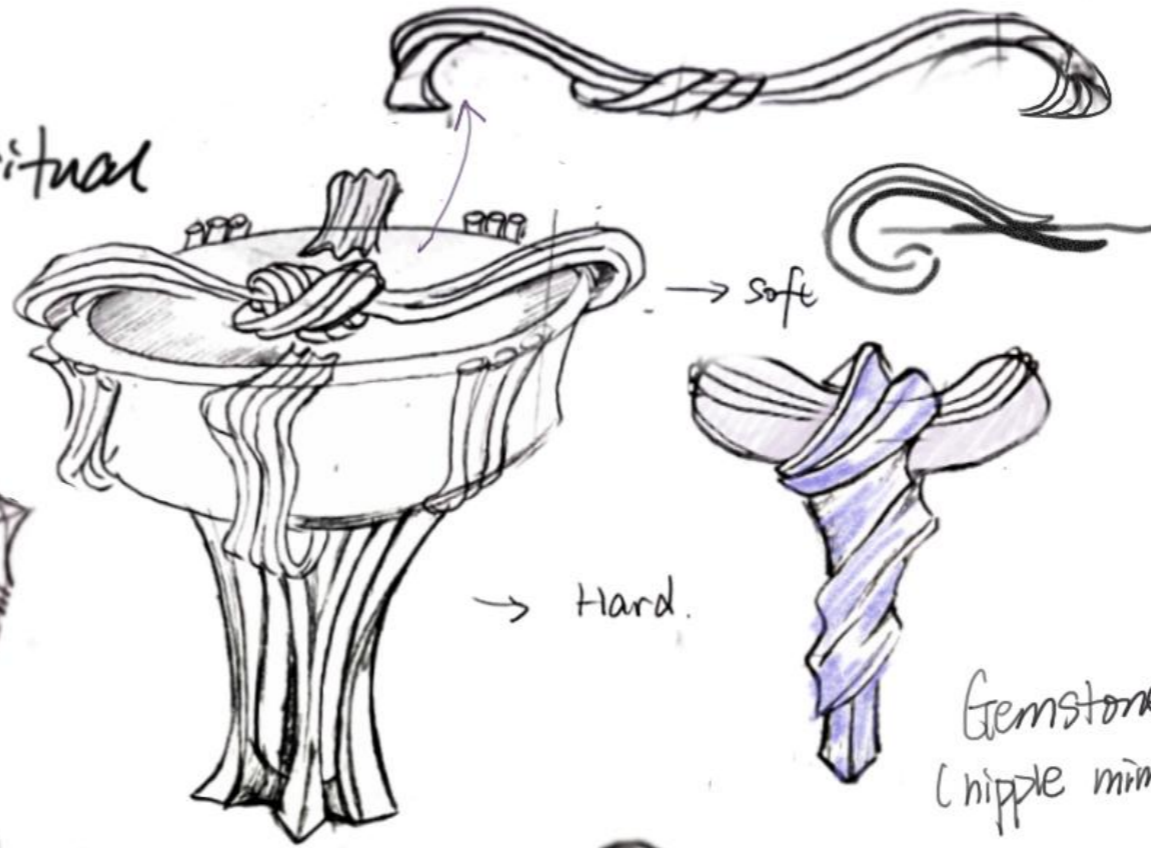
merge



Ring Design.



Shaman ritual Drum



Gemstone (nipple mimic)



Cowhide Shaman drum

Translucent texture



Spectrum

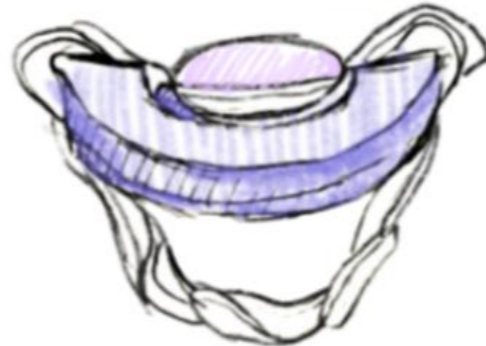
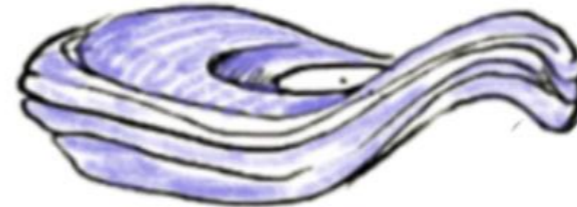


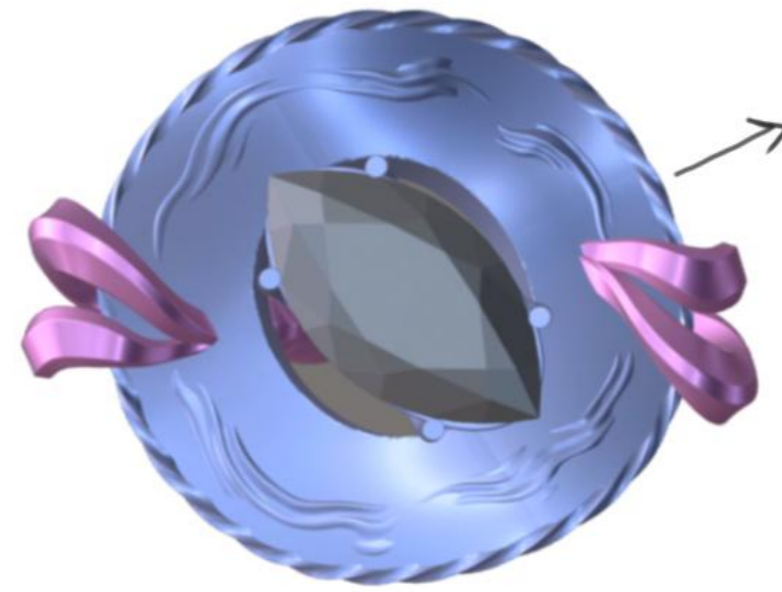
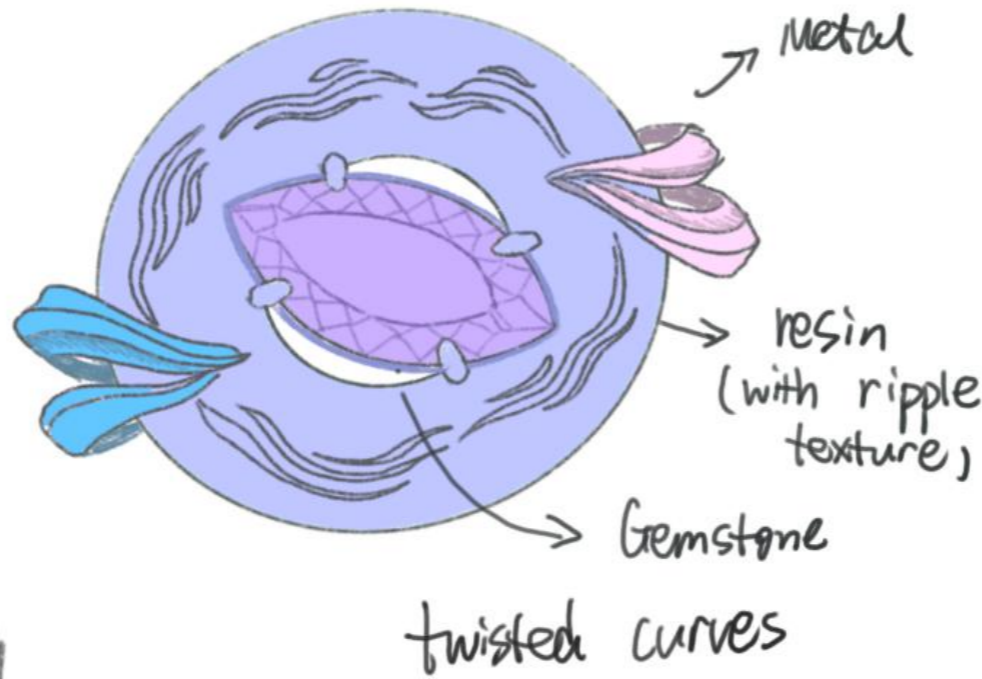
Flowing curves.



wipes

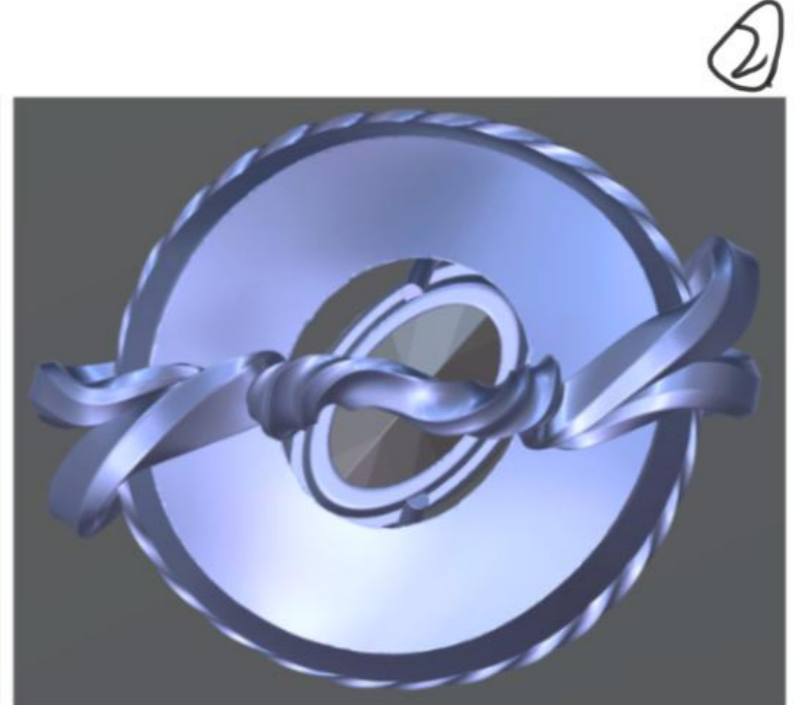
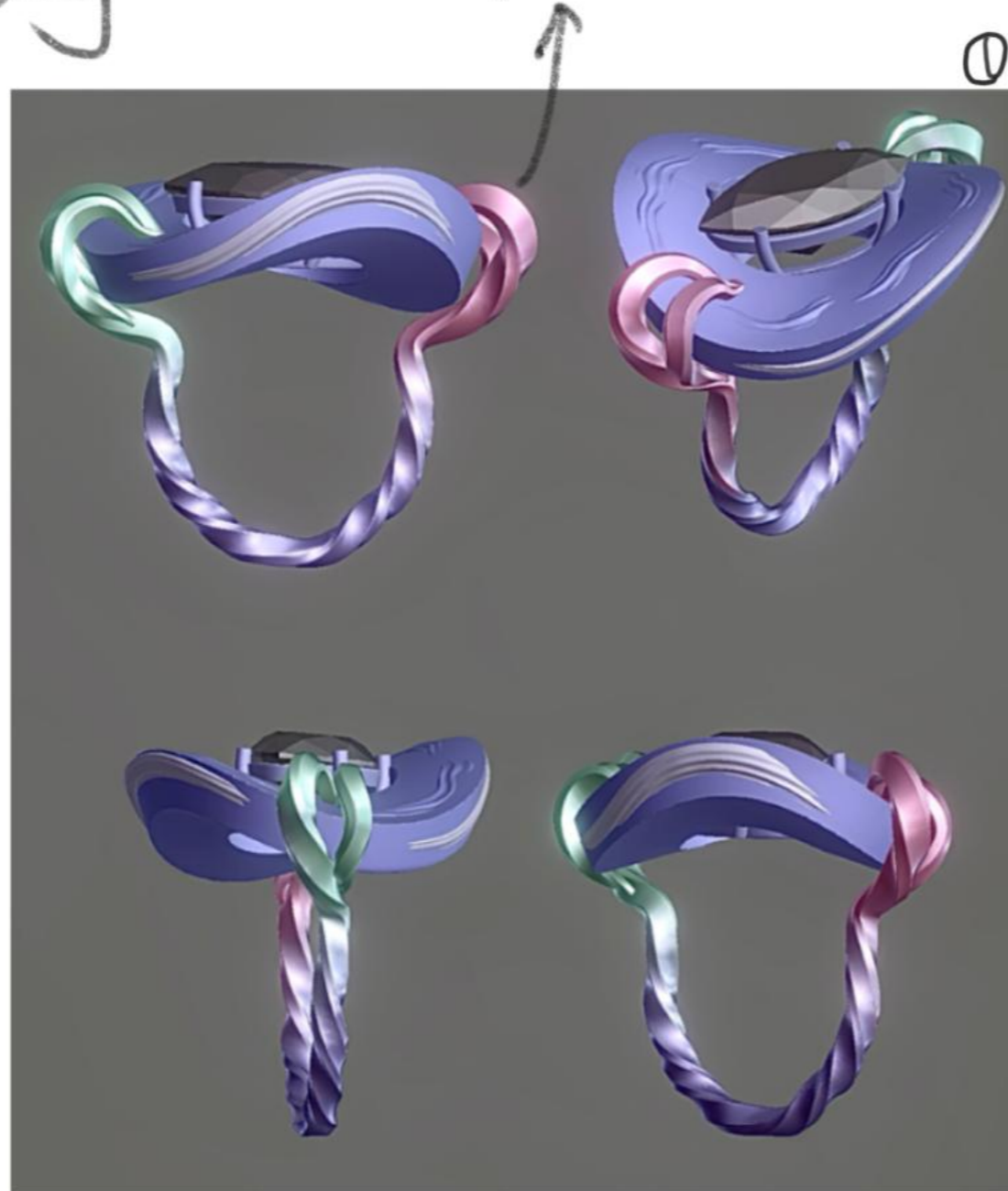
Nipple piercing



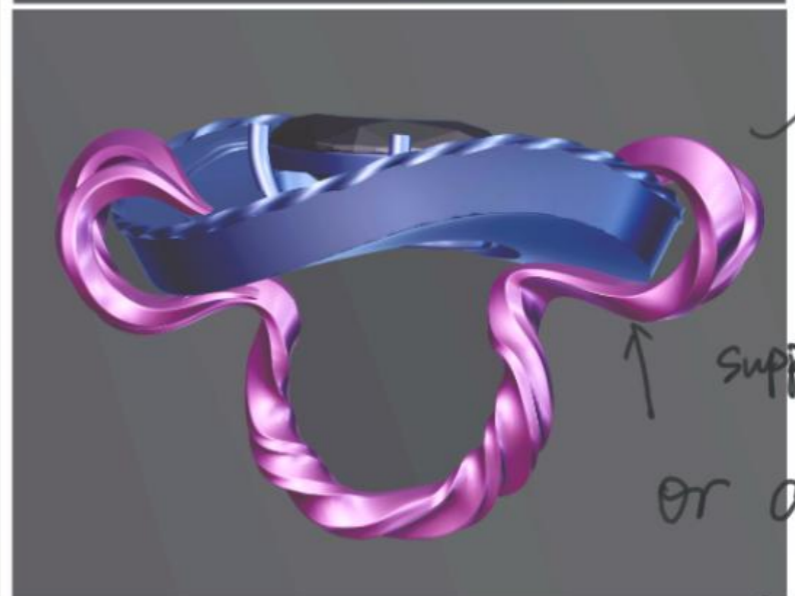


Add a ring of twisted curves to echo the ring arms

# Nipple Piercing



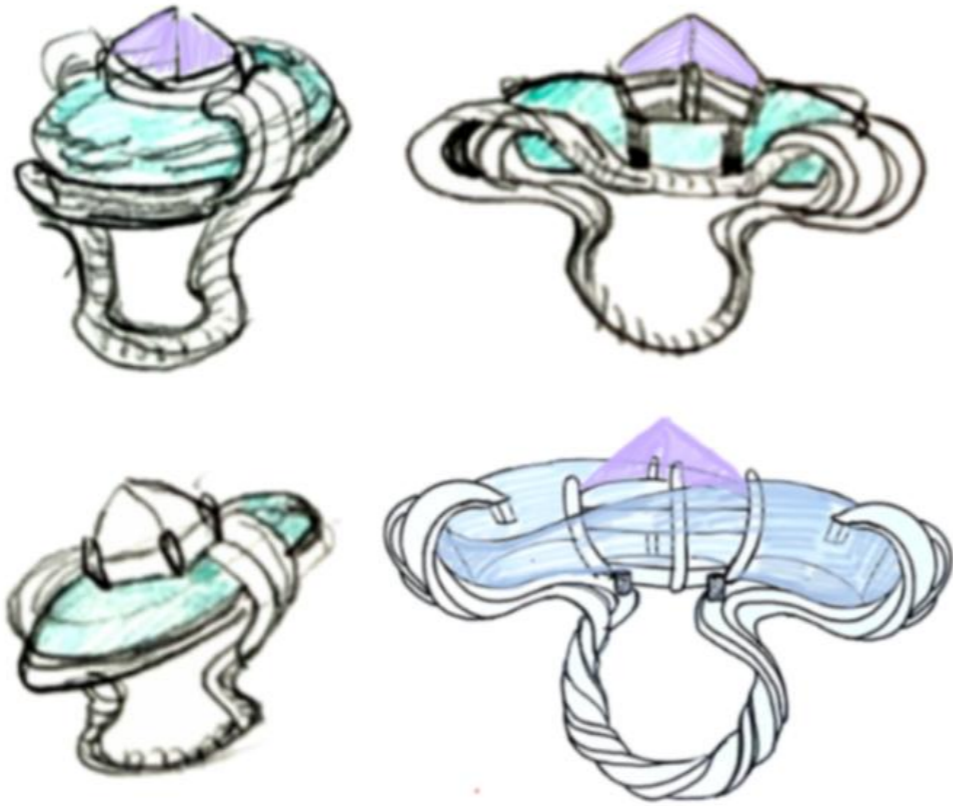
Exchange / merge.



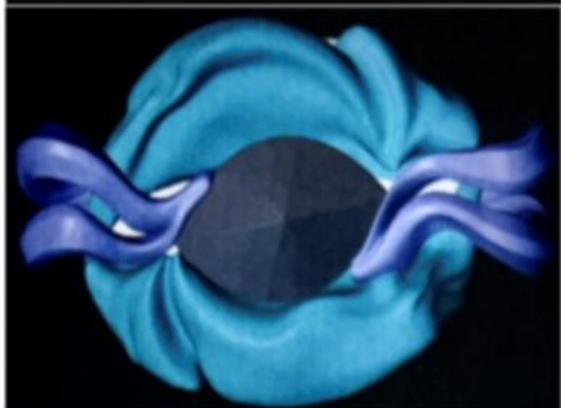
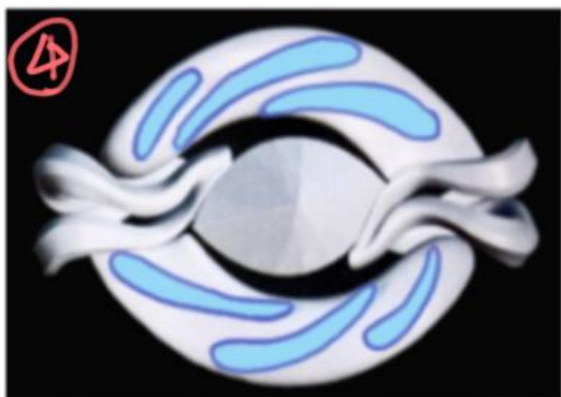
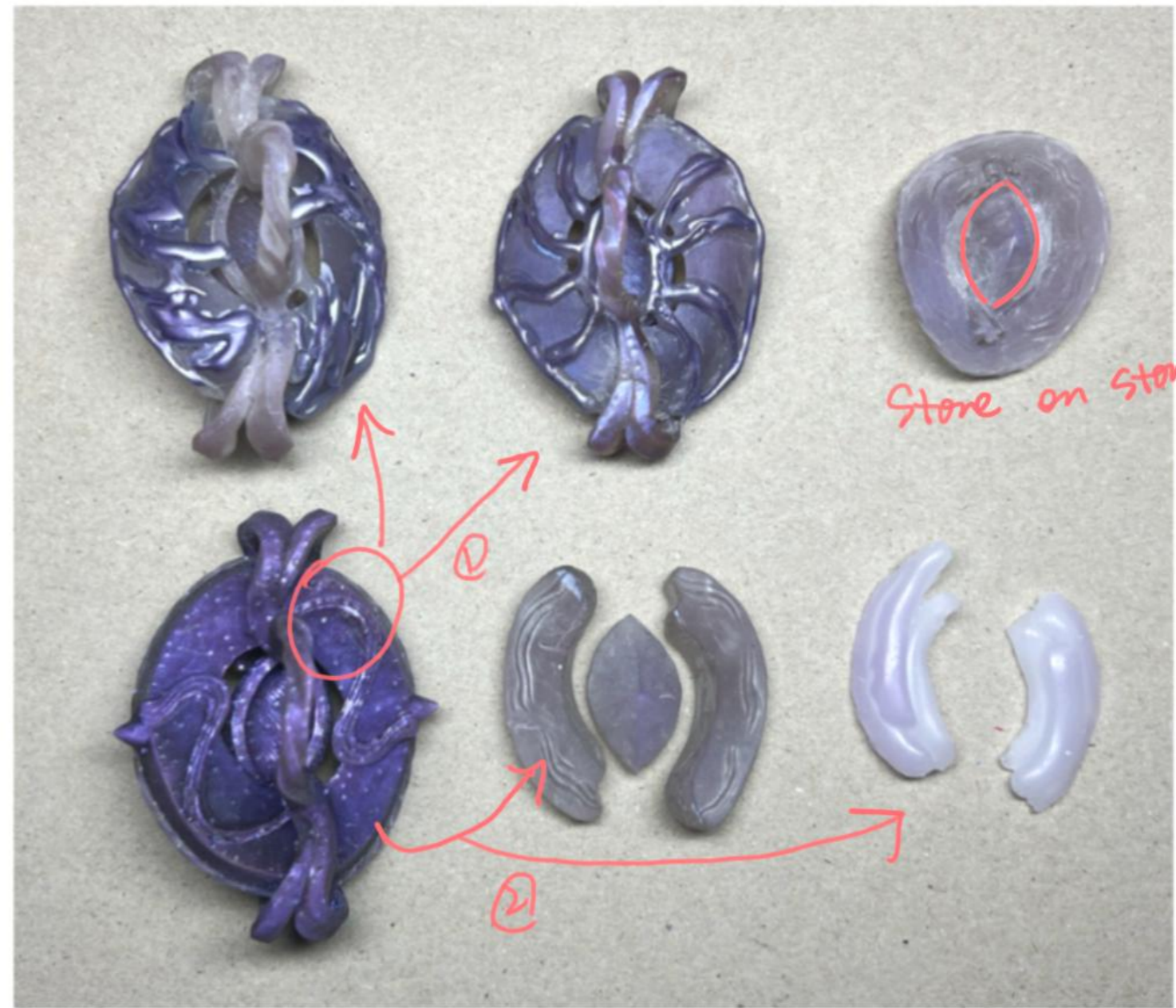
wonder if this constructure could be sensible

support the resin.  
or adjust another metal support?

# Structural improvement ideation.



Reference for 'stone-on-stone' craft  
Eliminating the hollow structure  
and add groove for setting?

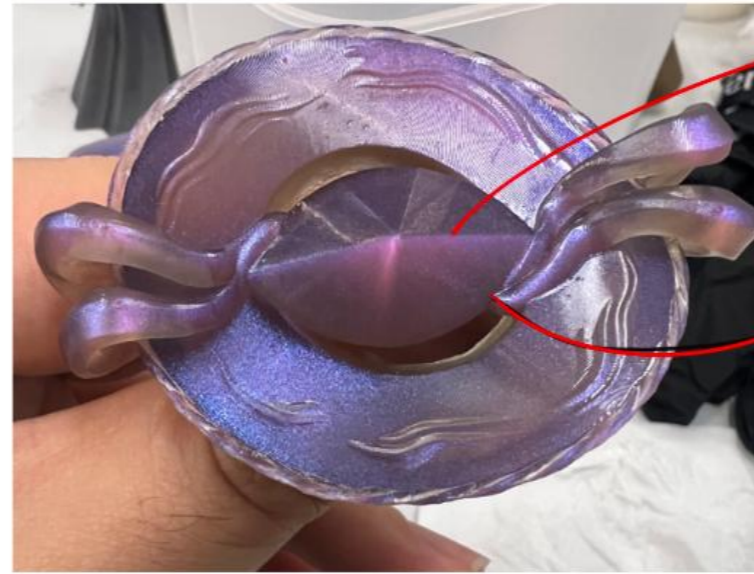


## Alternatives.

- ① Metal support (whirlpool)
- ② separate resin (in 2 pieces)
- ③ Separate metal components. (facilitate installation)
- ④ change the shape of resin.

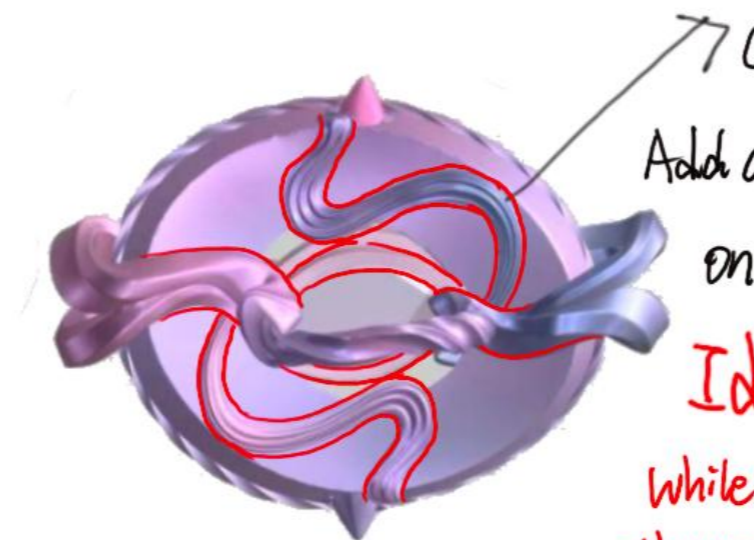
Or changing the Resin surface texture.  
give a sense of visual dynamism?

Iteration Model version 2. (Metal support structures)



→ The gemstone is set from above creating a more edgy aesthetic of rivets. Sharp angles contrast with smooth curves

→ Extend the claws on both sides to connect with the settings.

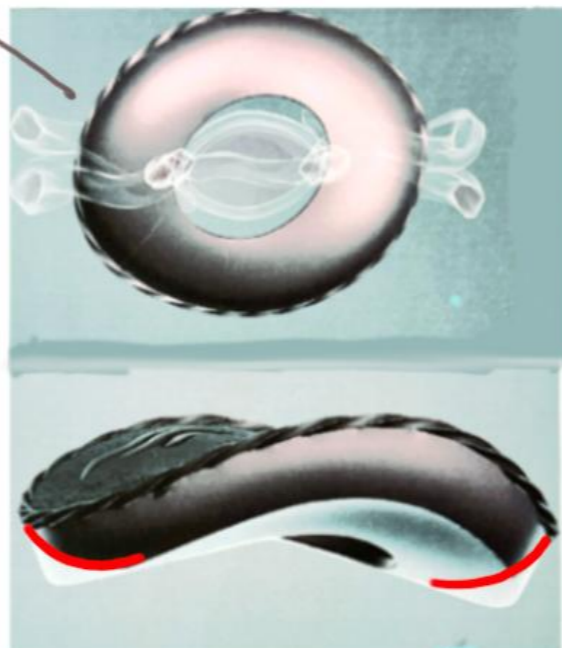
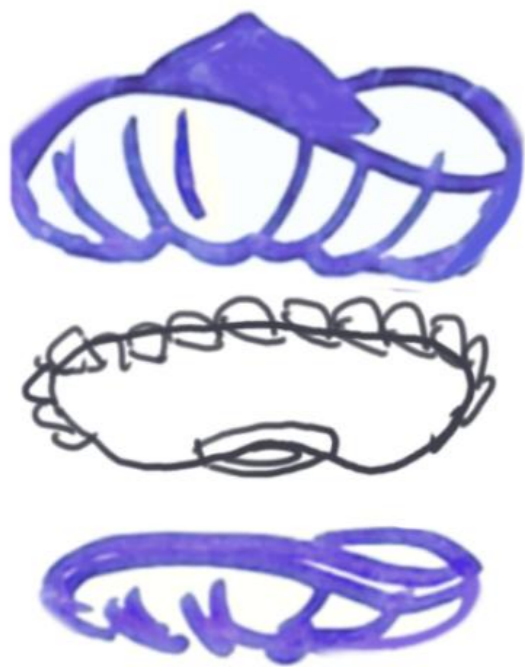
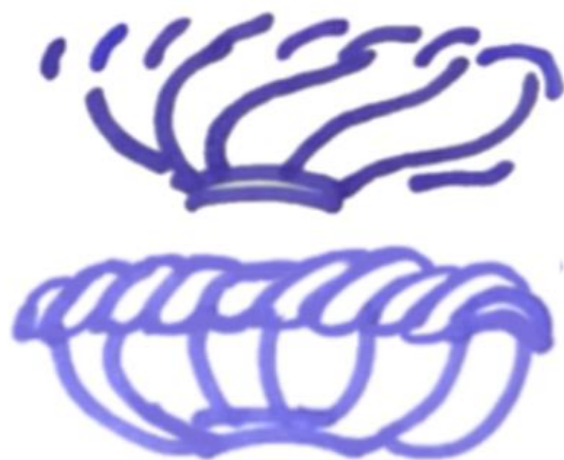
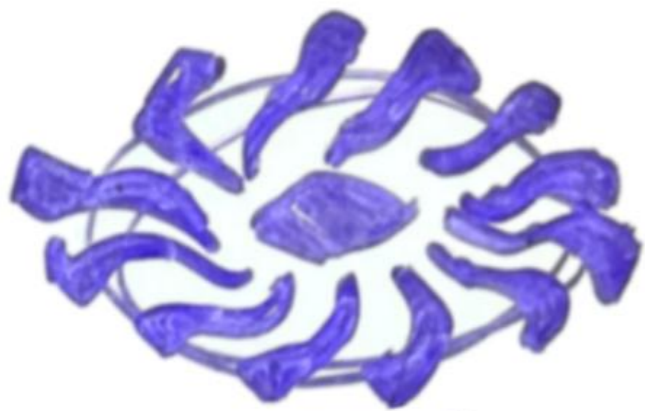


→ Consider how to combine Metal and Resin  
Add a supportive functional structure on ring band.

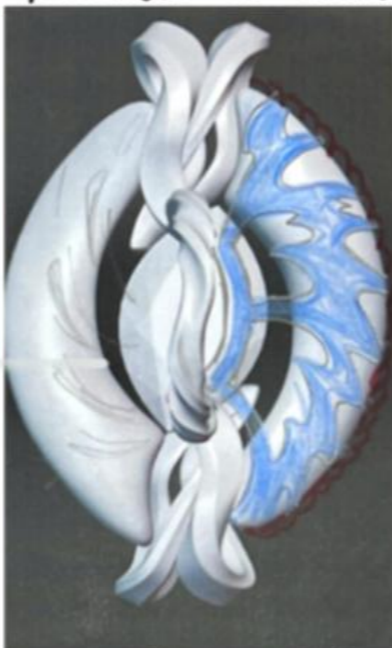
**Identified Issue:**

While the supportive structure enhances stability, the undulating contours of the resin component may restrict proper installation.

Change the resin more rounded. and iteration some improved supportive structure.

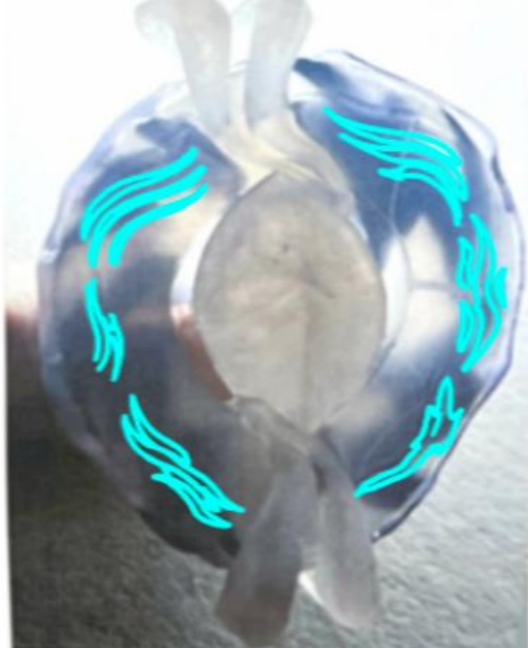


Method ① Metal support



Ripple texture  
 ↓  
 soft curves  
 ( a calm / gentle state)  
 ↑ transitional ↓  
 whirlpool texture  
 ↓  
 shaper lines  
 ( turbulent , fast-moving)

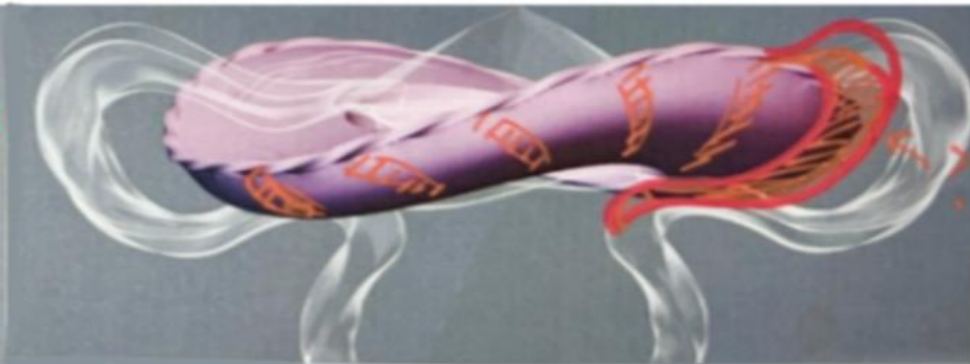
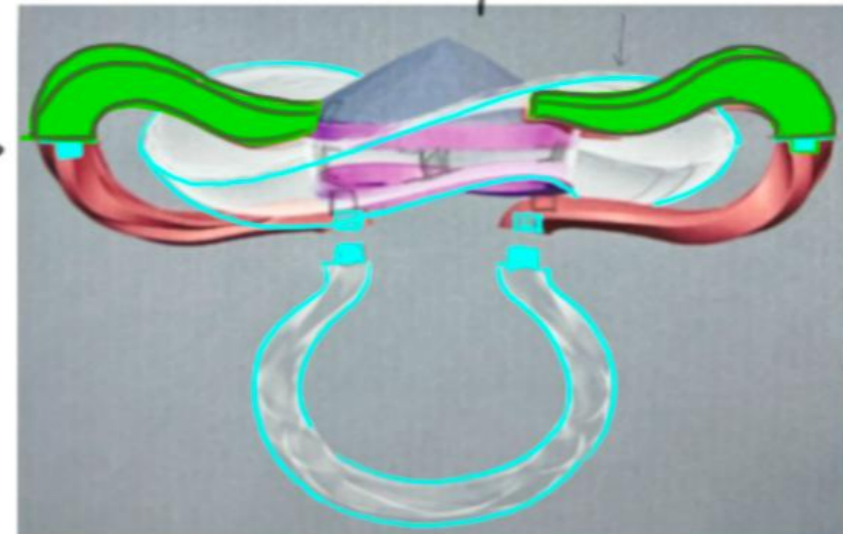
Translucent resin allows the swirling pattern to be visible.



Resin on metal base.

③ Method: Components. Separate.

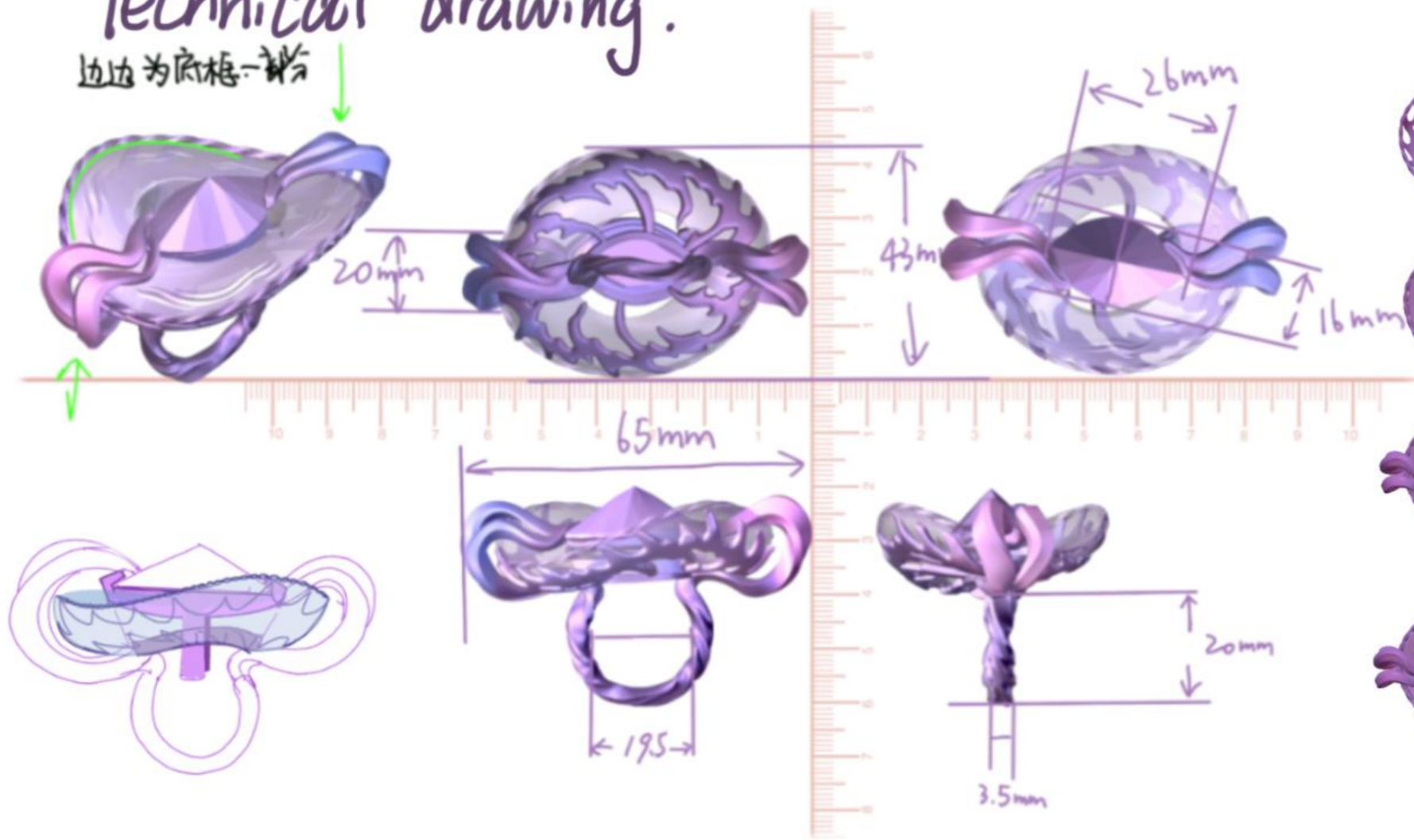
plug →



The ring band is divided into several sections, then welded together to form final piece.

# Technical drawing.

边为底框一部分



# Final assembly plan. (Divide the ring arm into two parts)



# Production Process



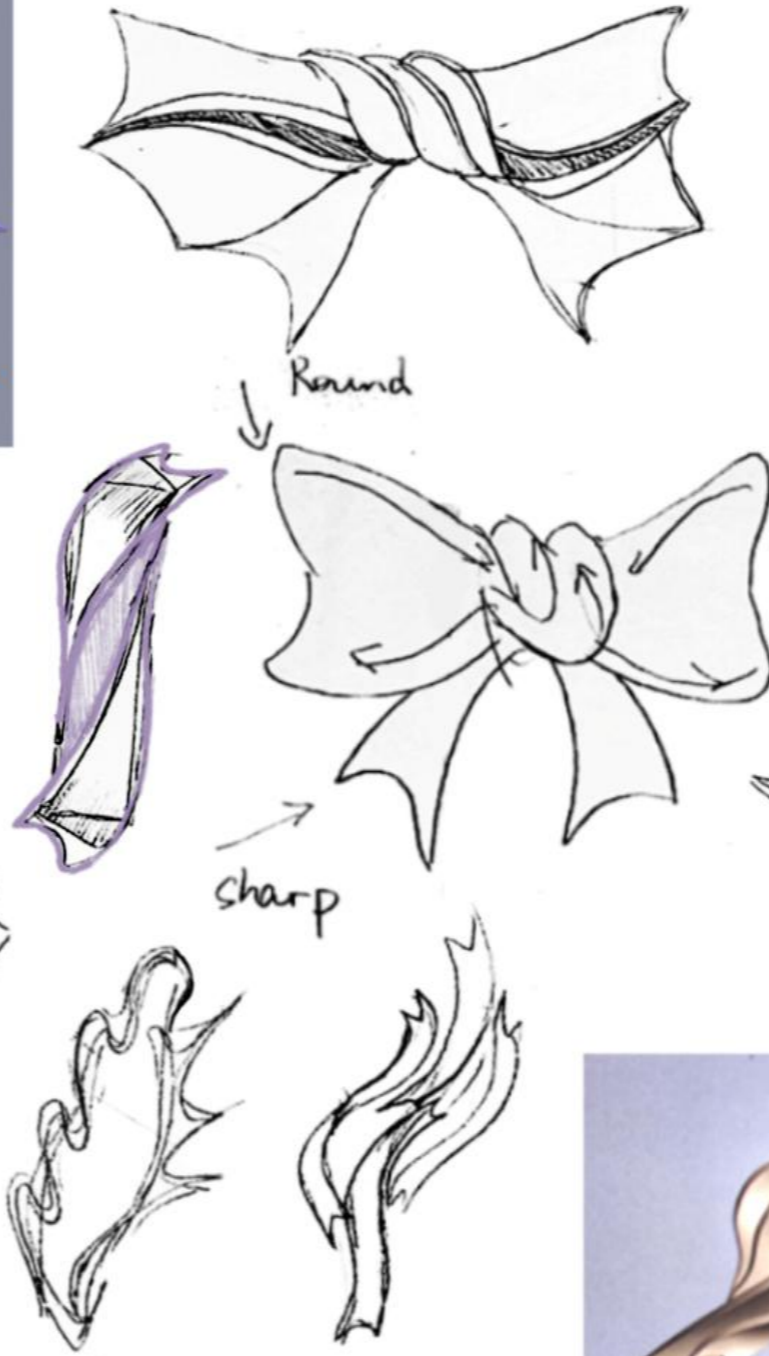
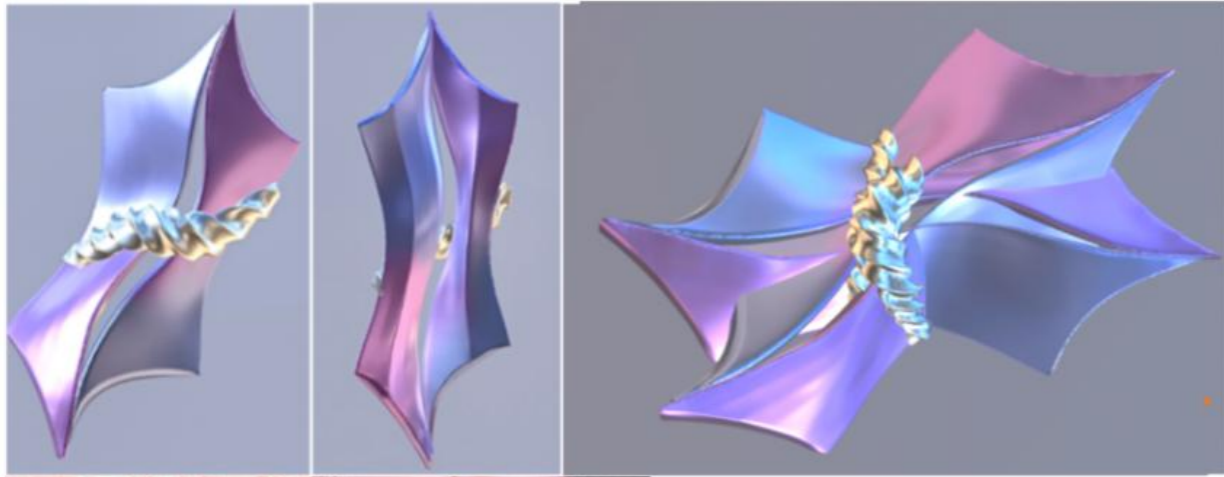
# Final Product



# Earrings

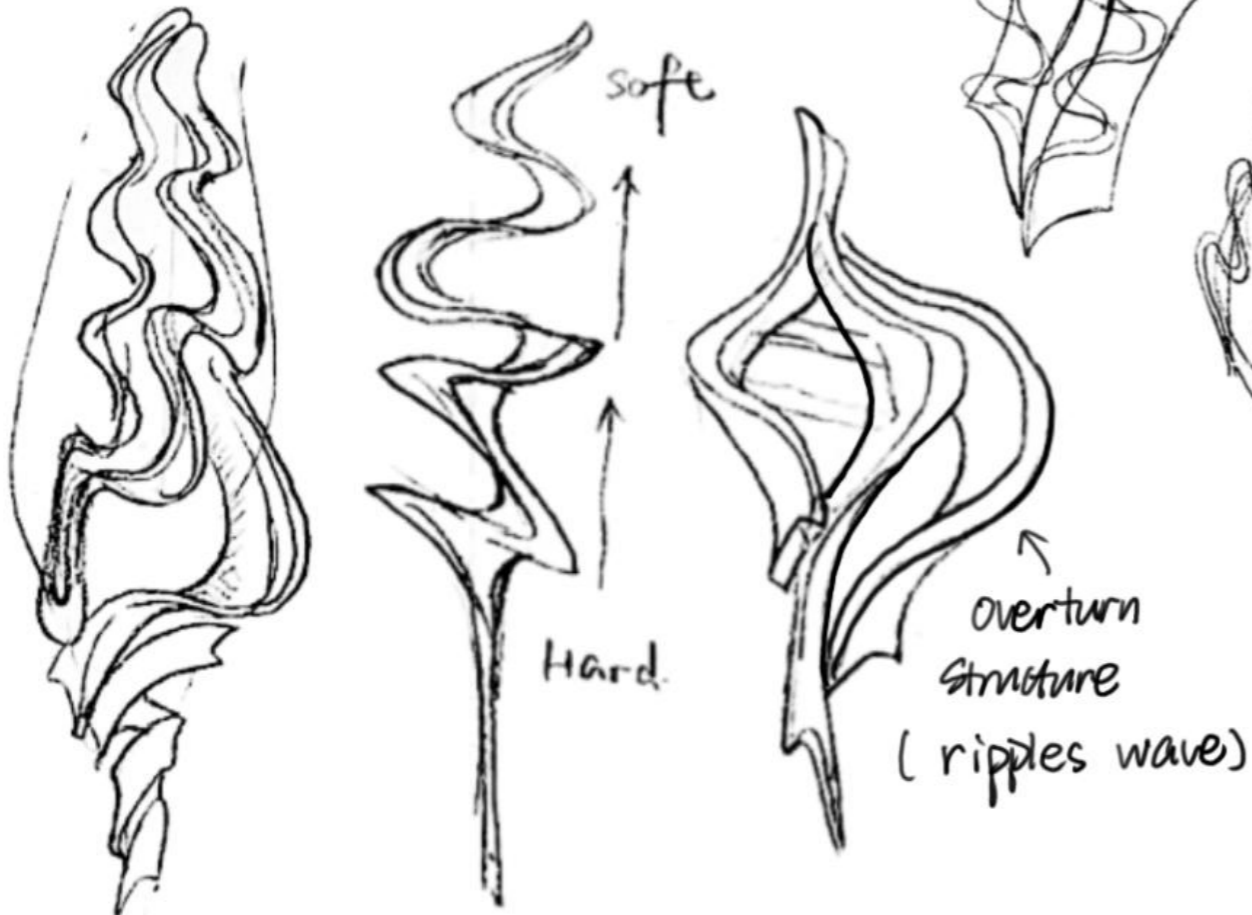
Flow



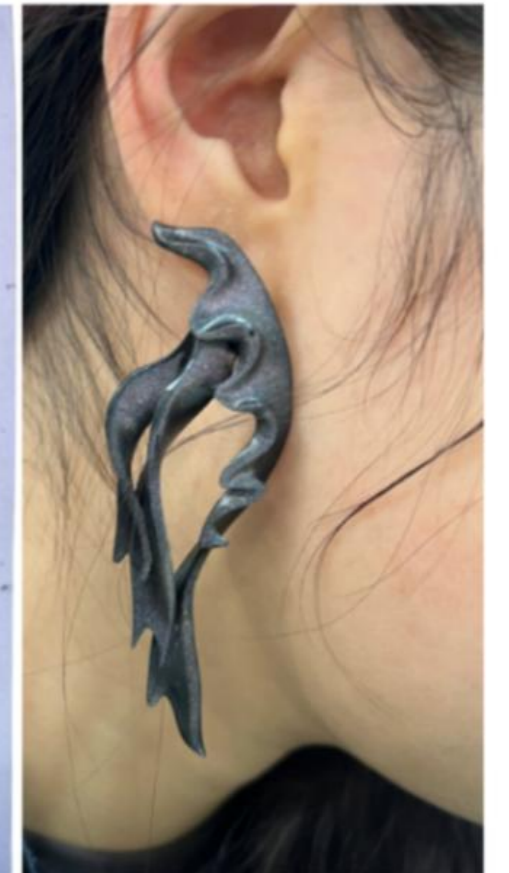


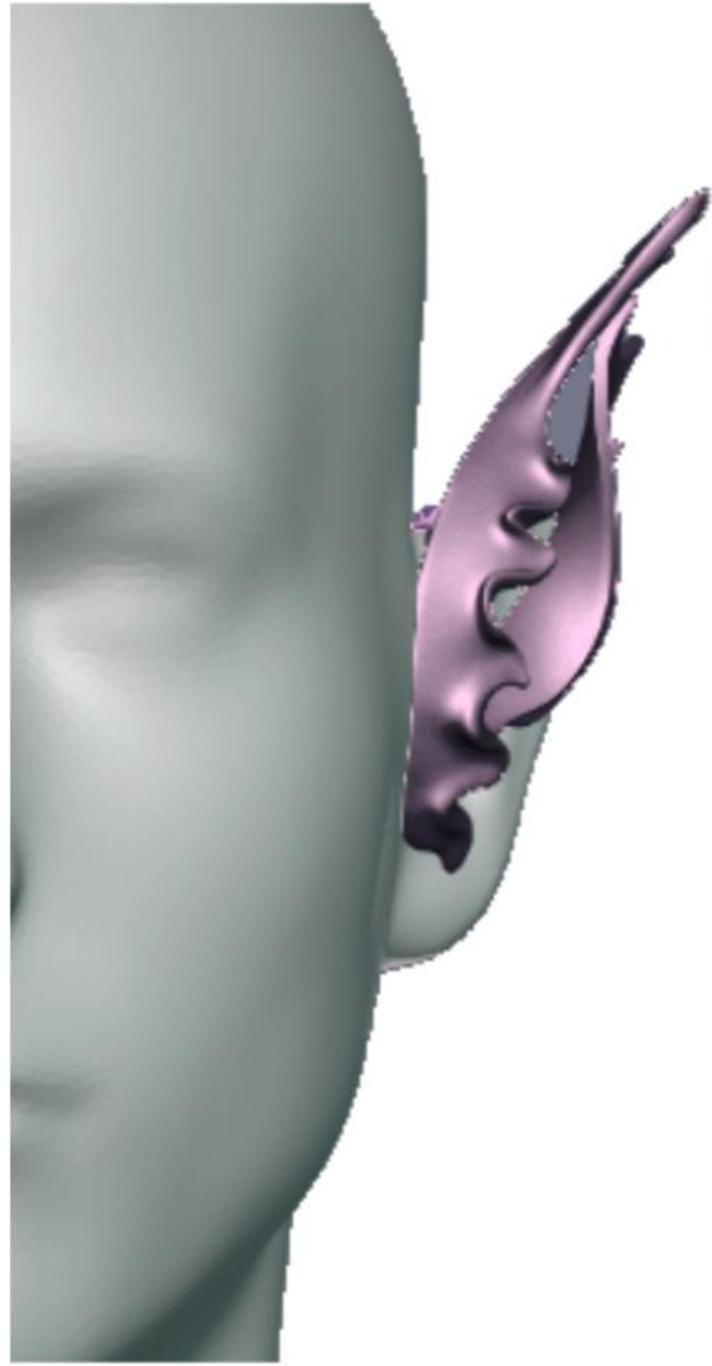
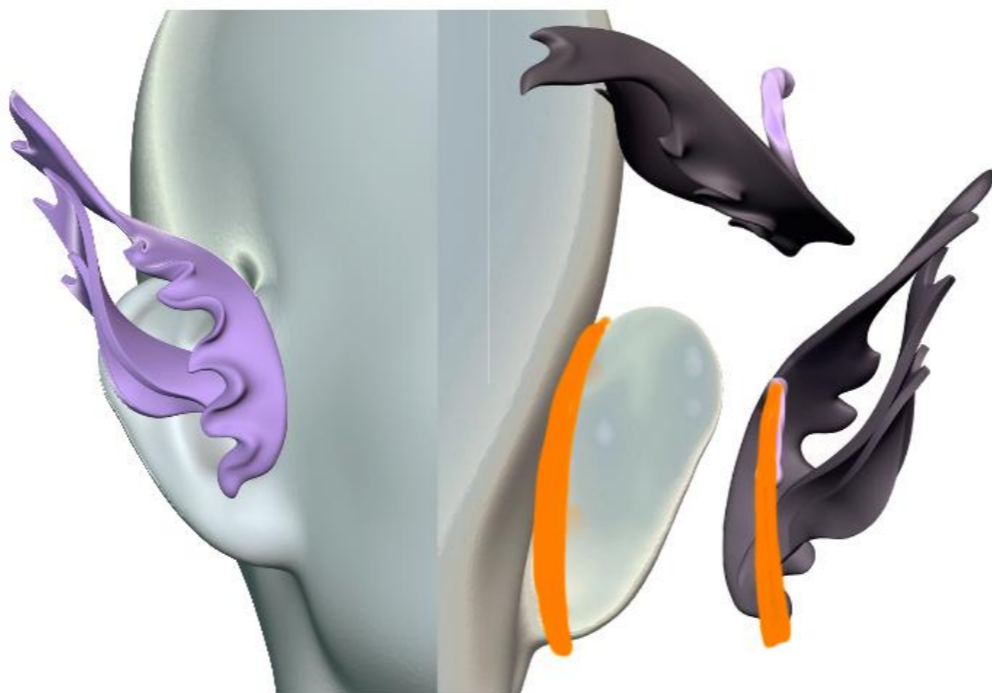
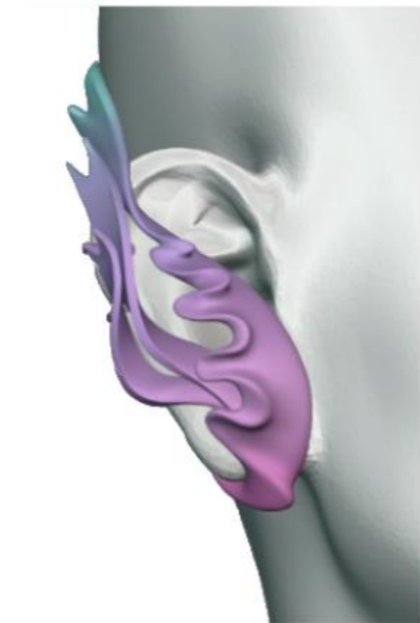
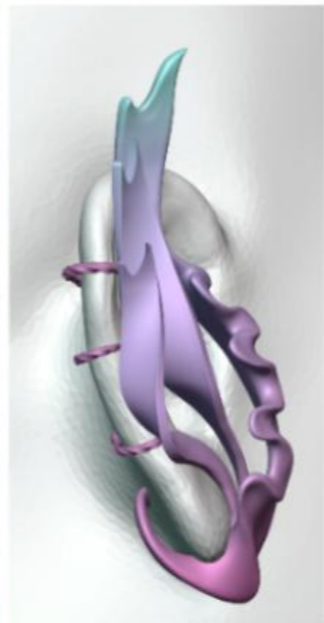
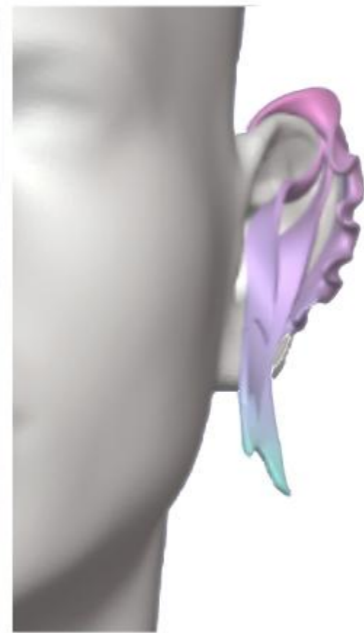
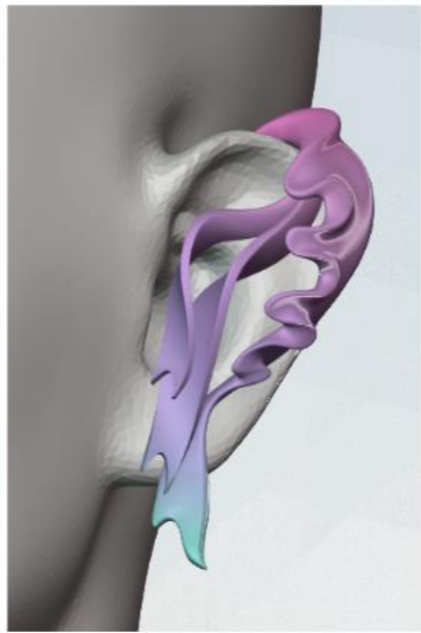
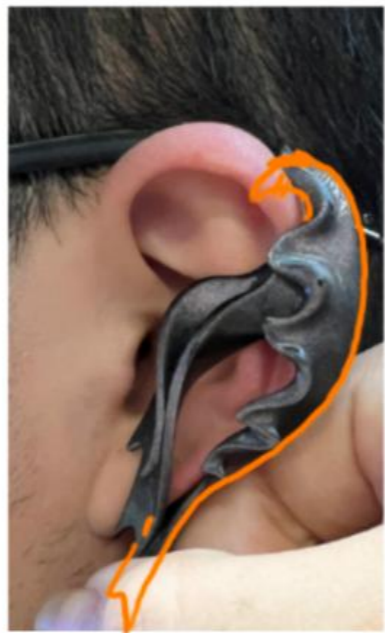
## The 'ribbon' imagery

- ① Tapered edges help prevent fraying
- ② pointed ends give the ribbon a sense of movement
- ③ A symbol of elegance
- ④ Queer culture a unique twist symbolizing a break from gender norms.



Conch shells → Vagina

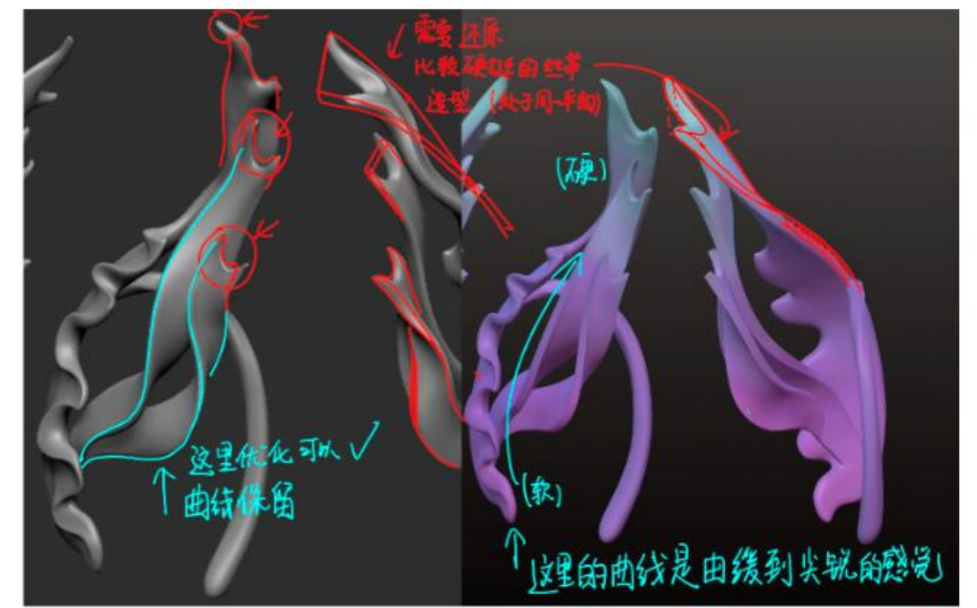
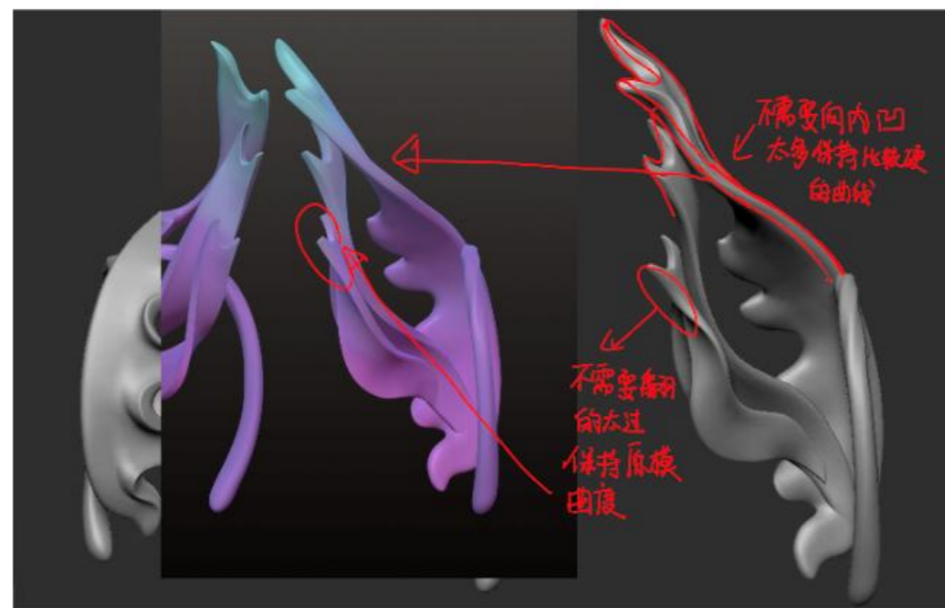
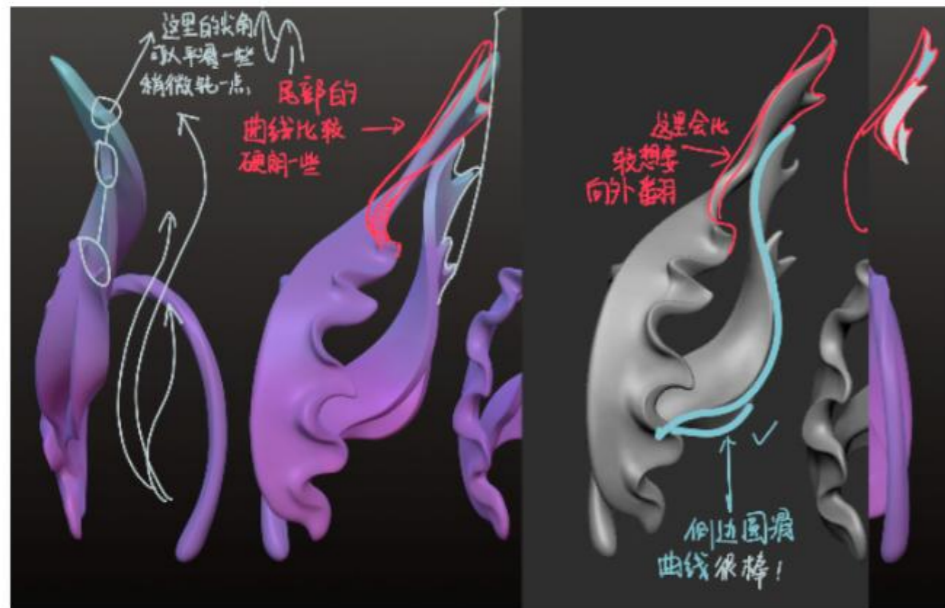
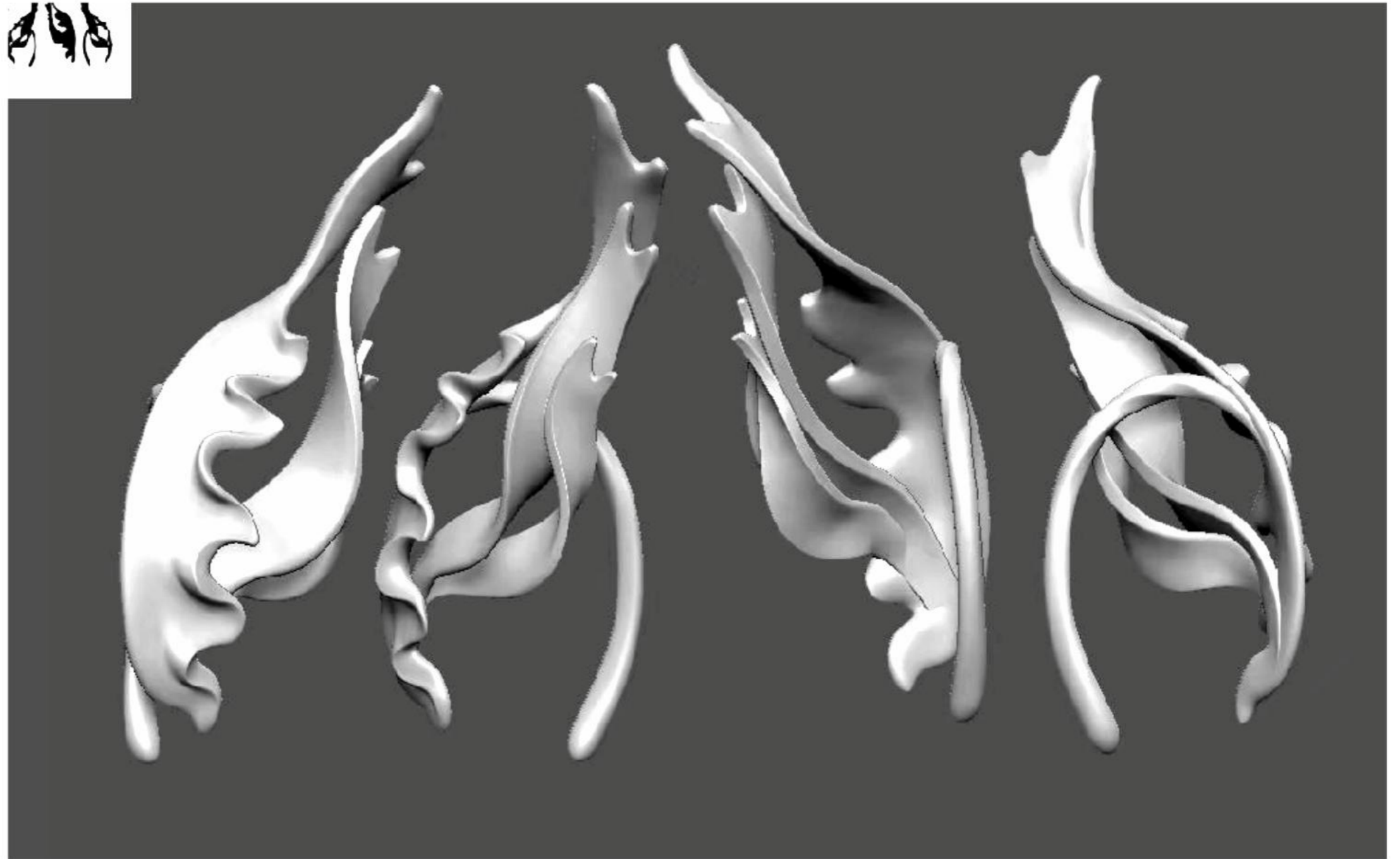




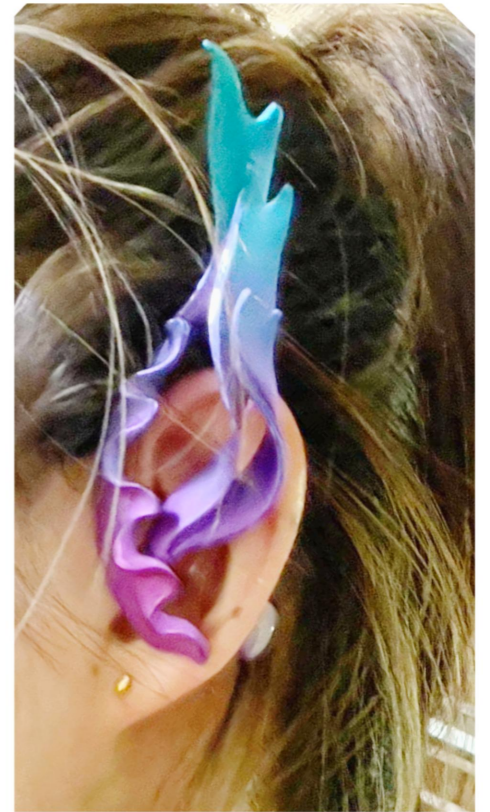
# Digital model adjustments



- ① Smoothed the edges
- ② optimized the curvature
- ③ Reduced thickness to lighten the overall weight for better wearability.



main metal body is matte texture with polished edges.

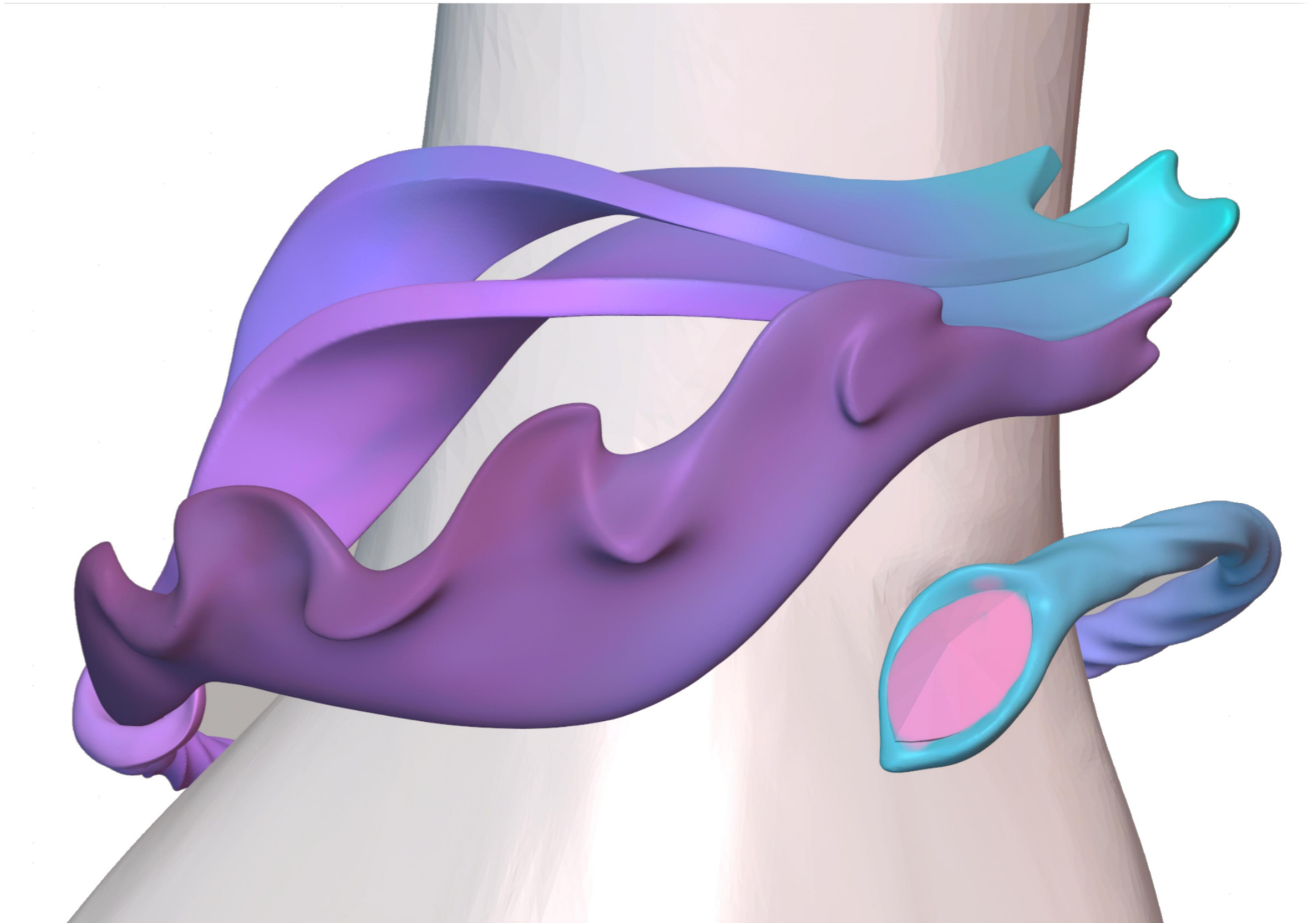


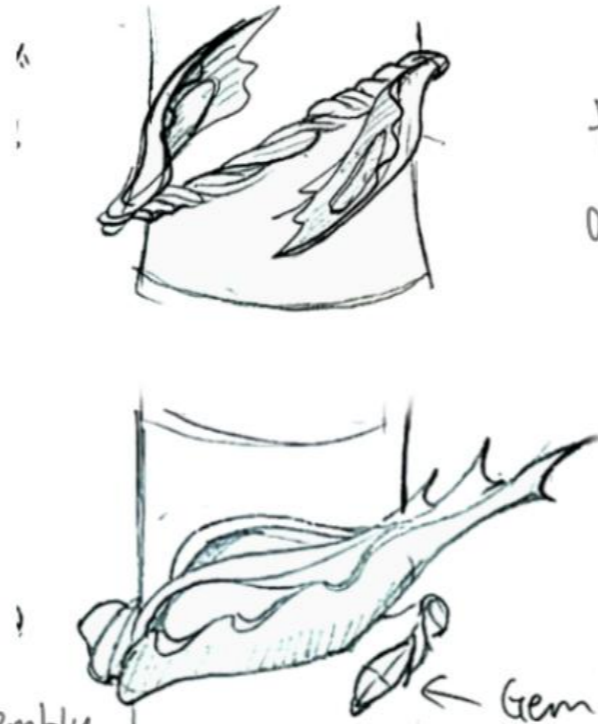
matte titanium anodizing color adjustment



# Bracelet

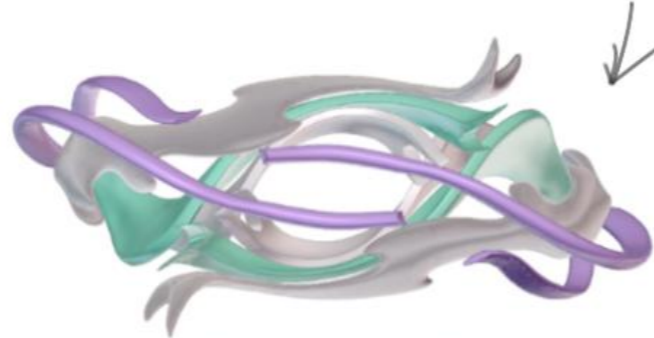
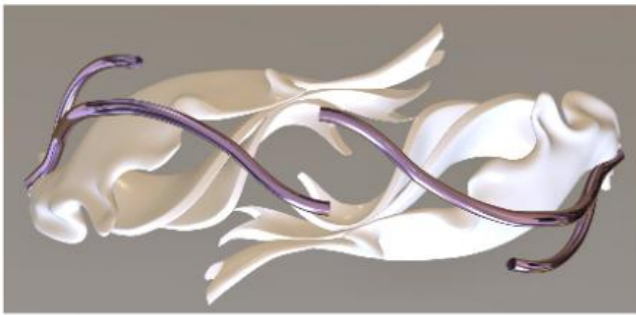
Fluctuate





too much / Hard to assembly.

Titanium anodizing.



resin metal support.

more coherent to blend Bracelet rings with main body.

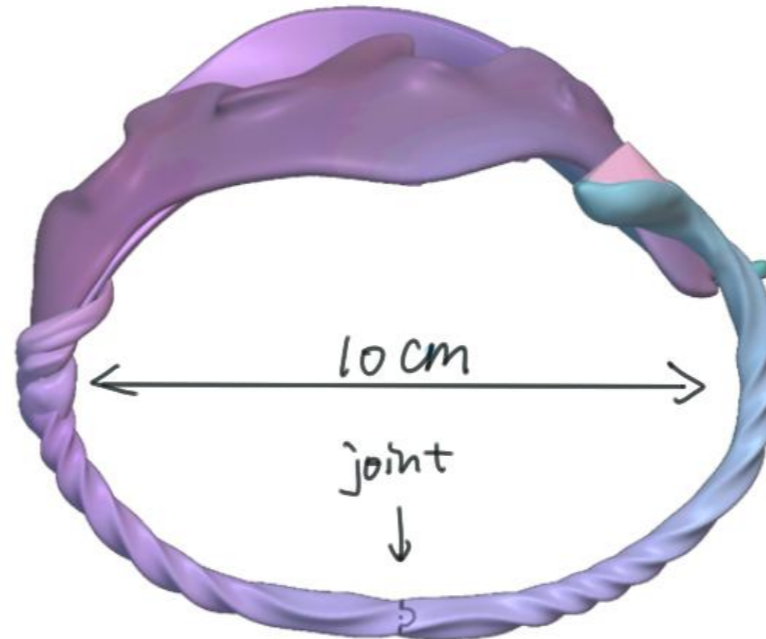
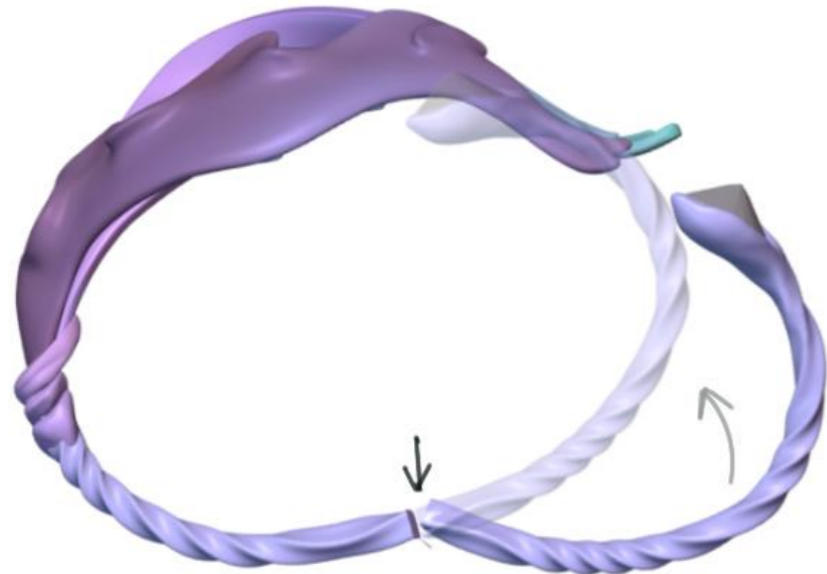
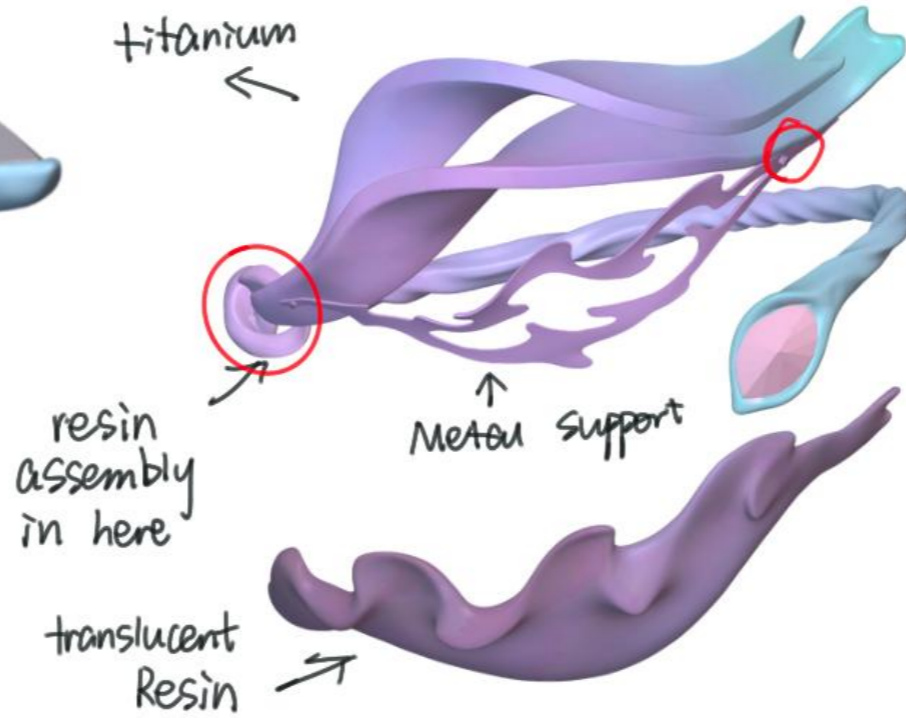
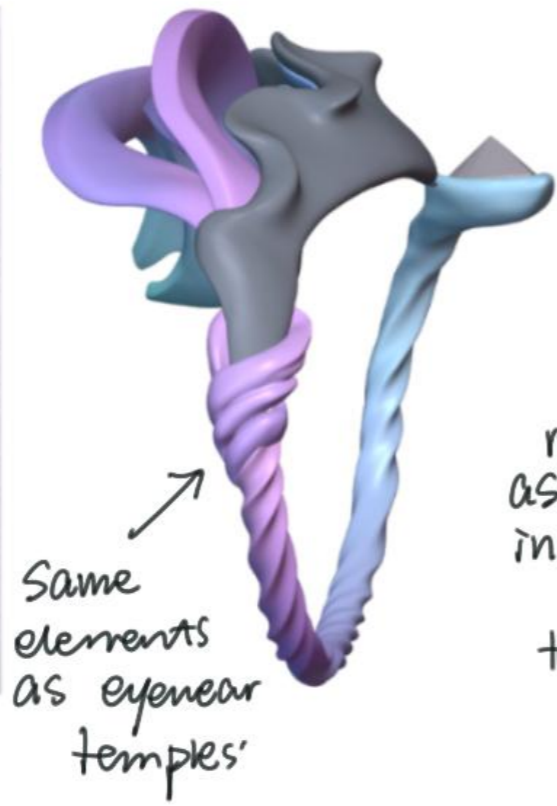
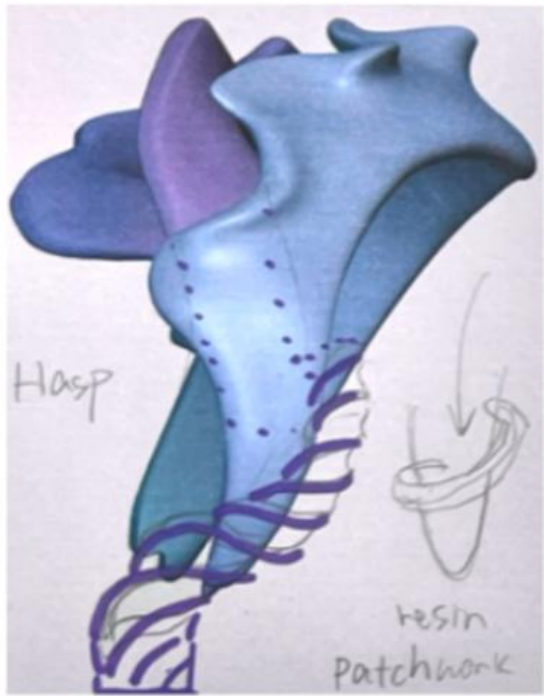
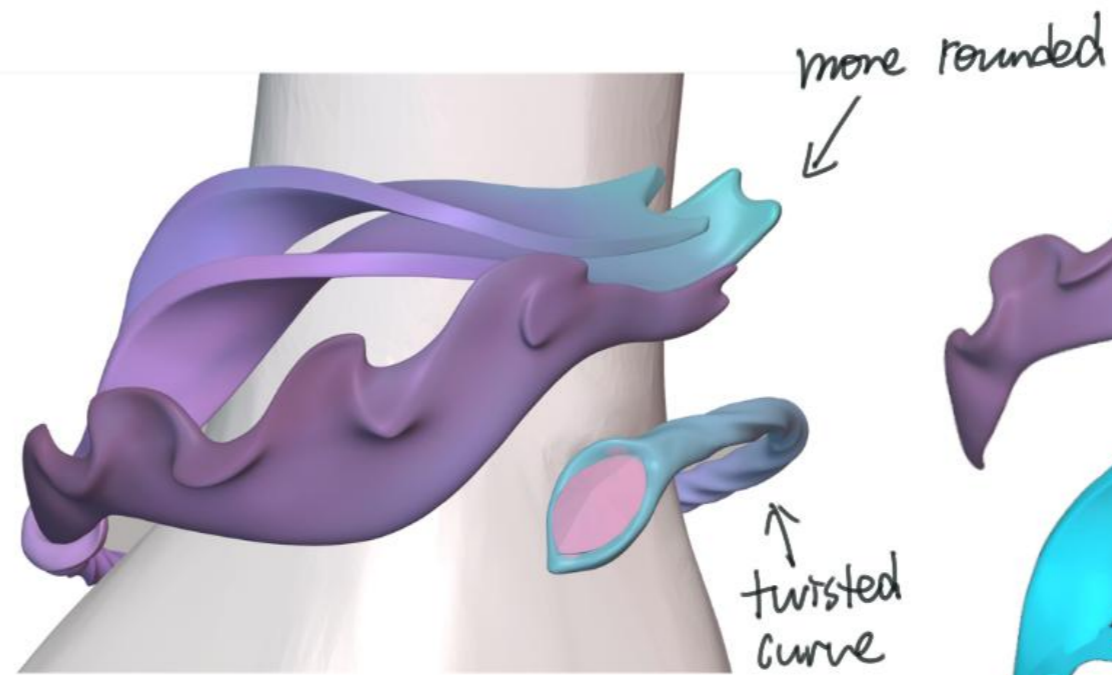
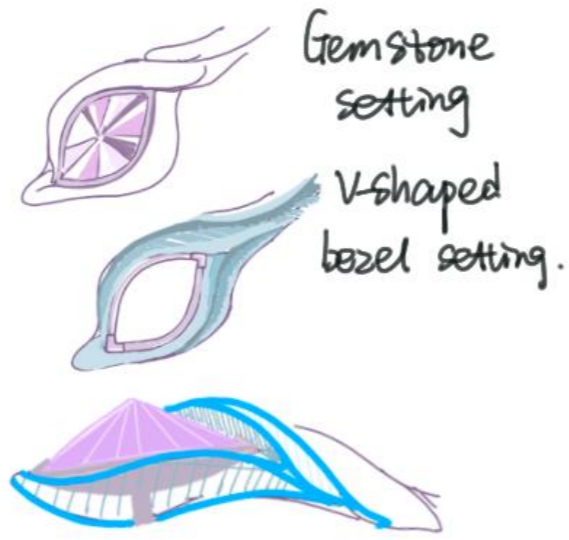
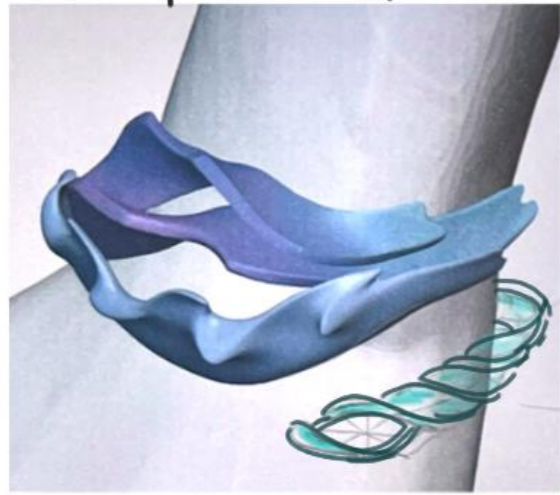
How to wear it?

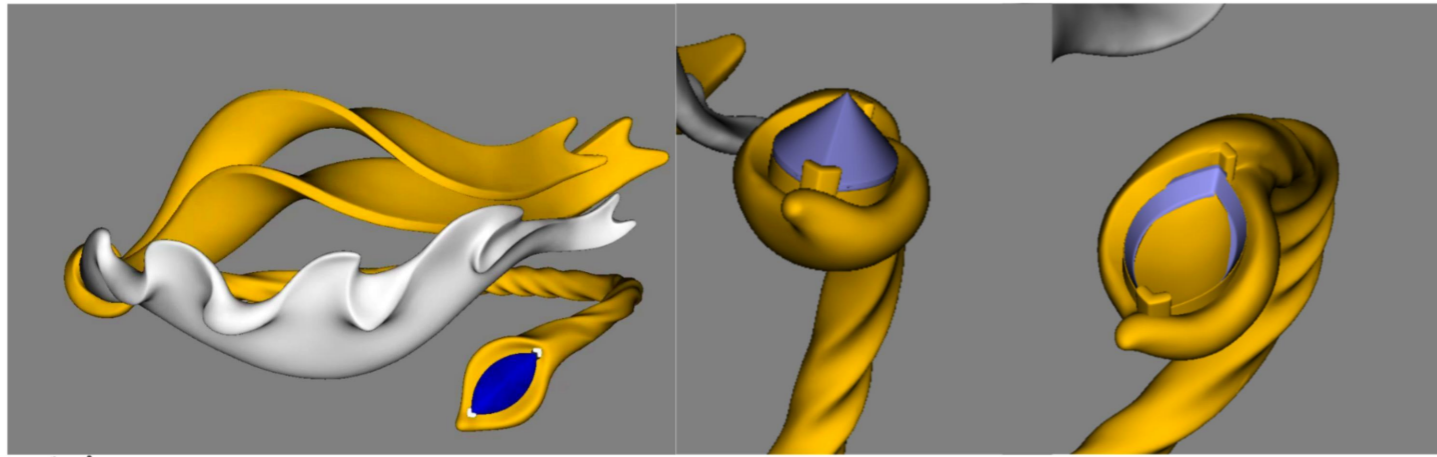
Set a joint?

polish inside.

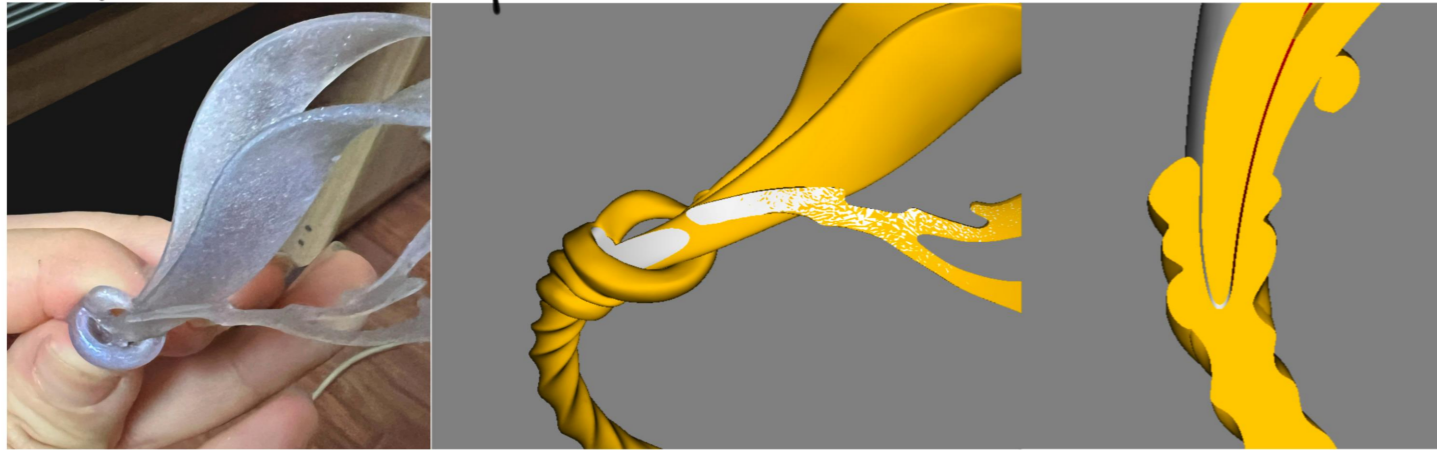
joint.

# Development of Bracelet.





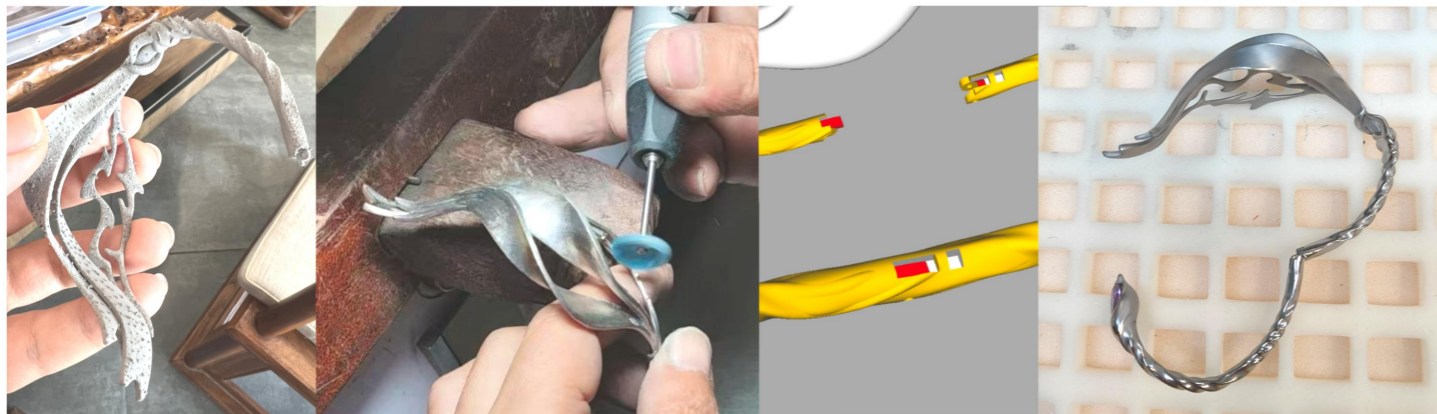
Adjust the size of the gemstone.



Using 3D printing confirms modified resin assembly site depth.



Post-dyeing process : ensure visual effect better



polish titanium metal. and assembly stainless steel spring insert at the joint



Due to the shrinkage of the resin, it doesn't contact with metal base very well.



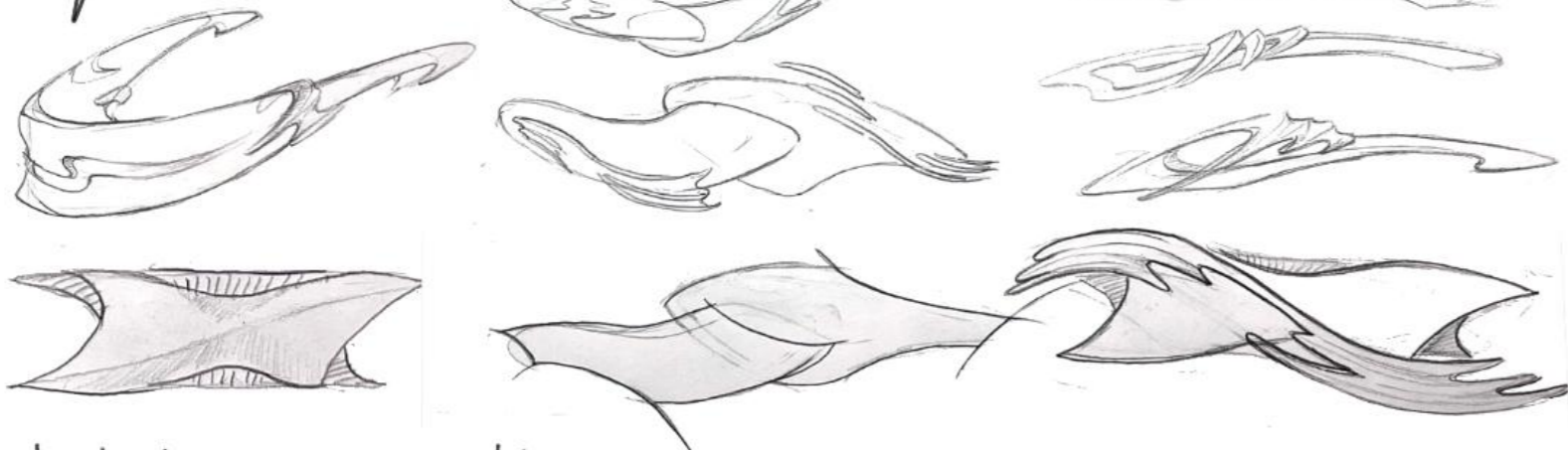
Final.

# Eyewear

collision



# Eyewear

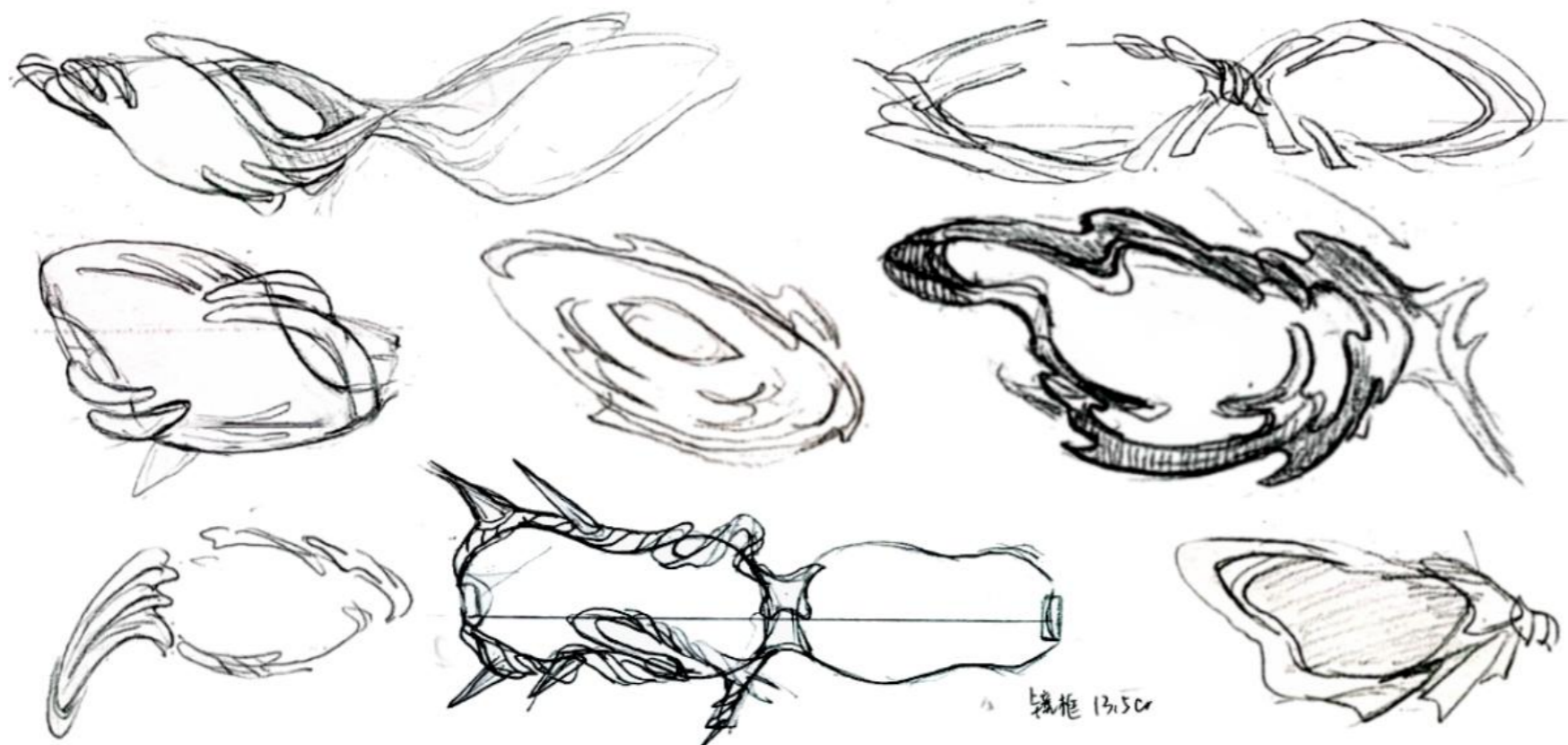


initial eyewear model



ripple wave surface pattern

(if change to a more intense ripple collision.)



镜框 13.50

① 支架框 + 象征性的镜片? (用于装饰, 表演)

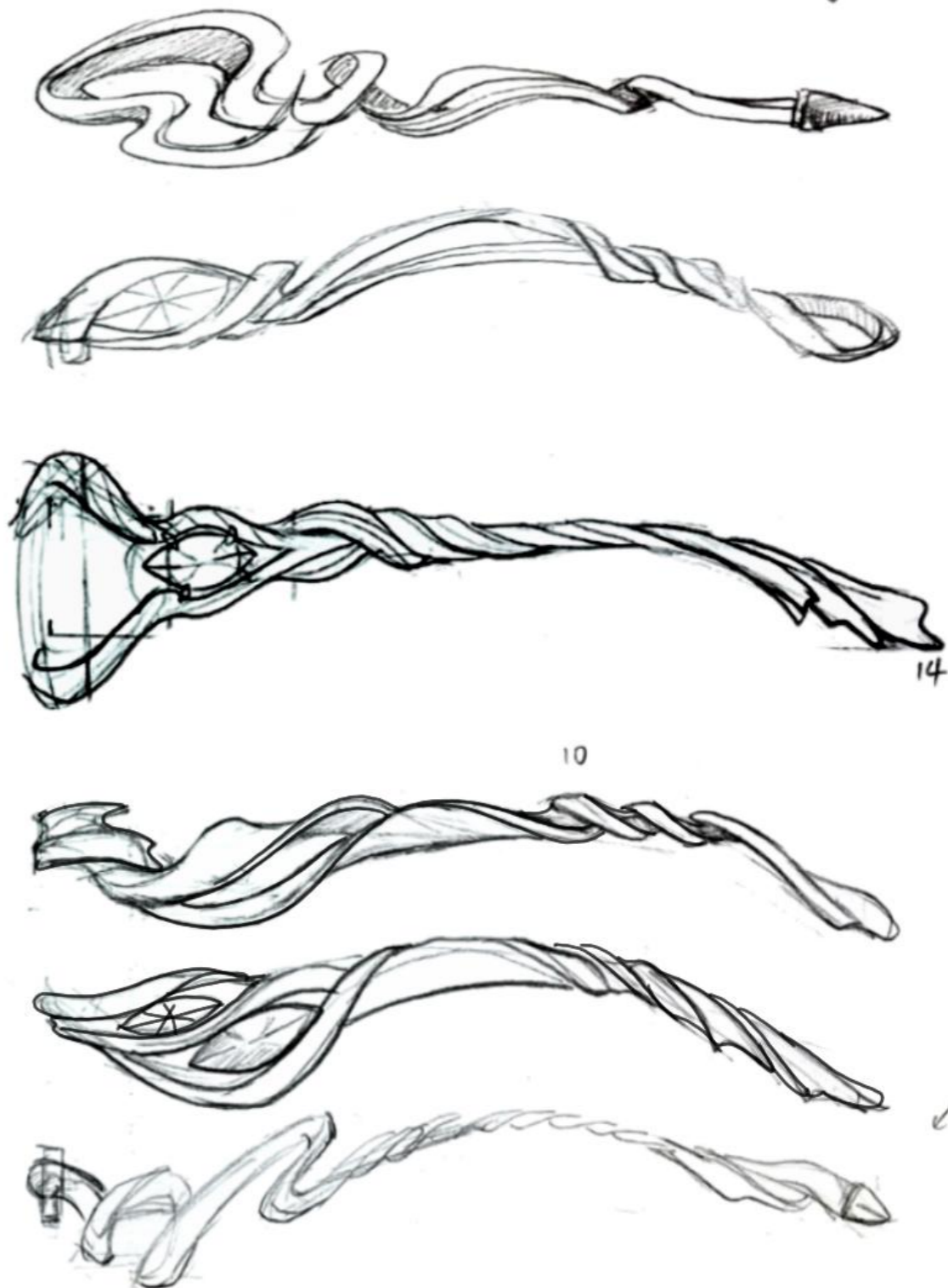
② 大型装置类型的面饰? 呼应齐满

① For decoration / show  
Just a support frame  
symbolic lenses?

② Mask / eyewear  
for performance?

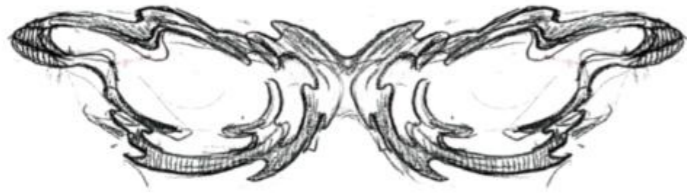
③ Fashion eyewear Jewellery.

↓ Gemstone



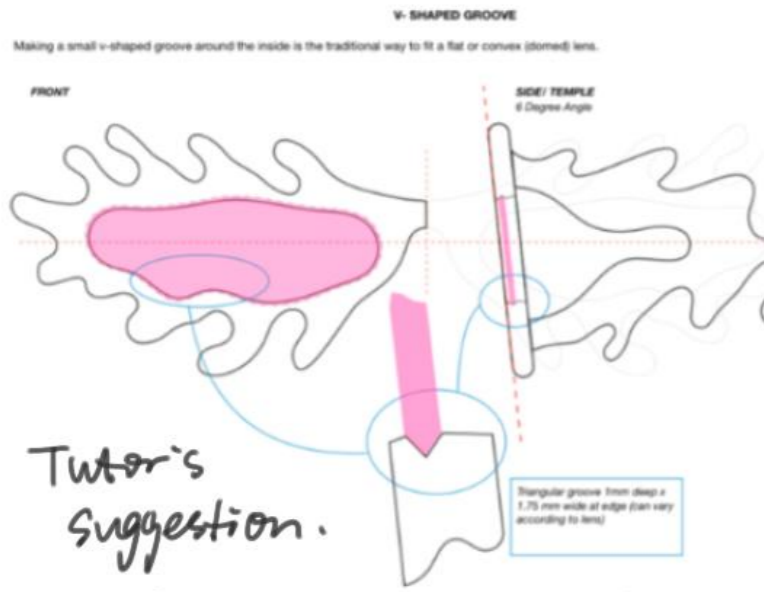
✓ Gem

# Ripple Collision Eyewear



Usually the template distance. 145mm to 155mm

lenses need the V-shape Groove

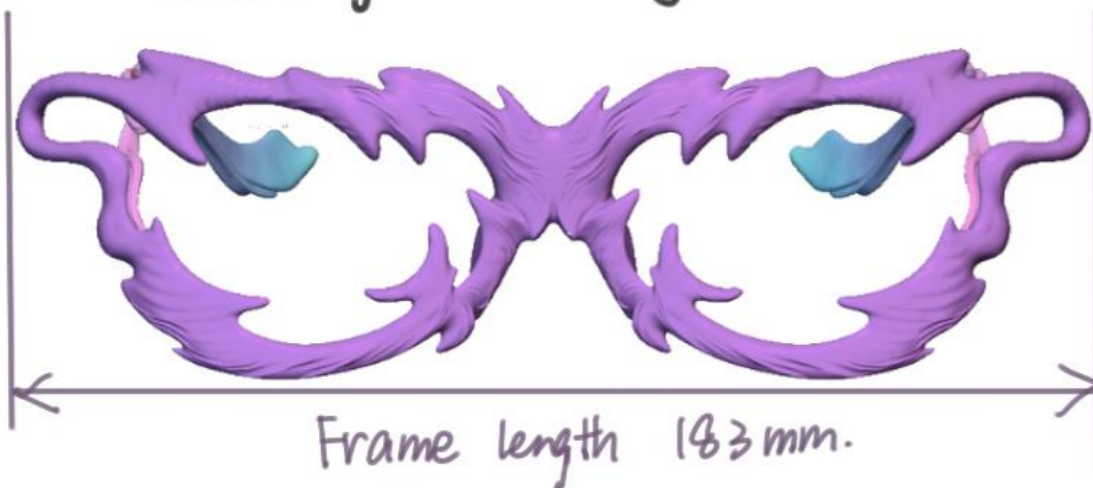
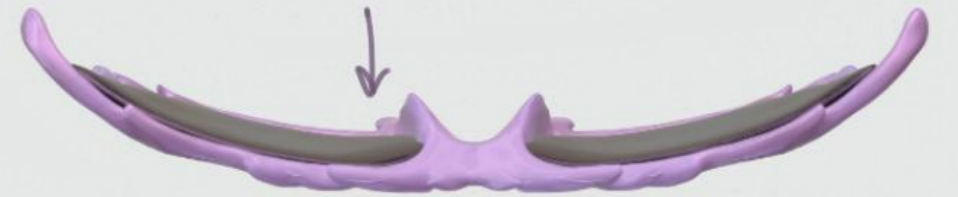


Tutor's suggestion.

Solve the problem about the eyewear frame and lenses' groove setting.



Frame is a curved type need consider the lenses' setting.



Frame length 183mm.



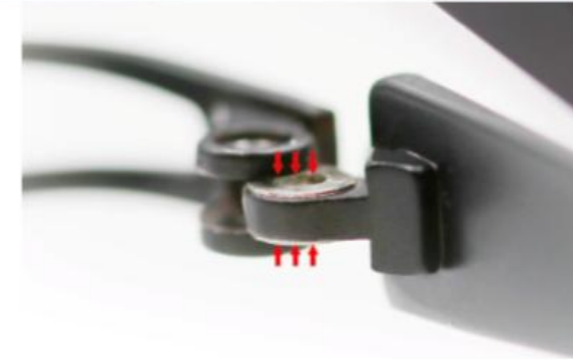
the template.

about 145mm

6° about 6° angle.



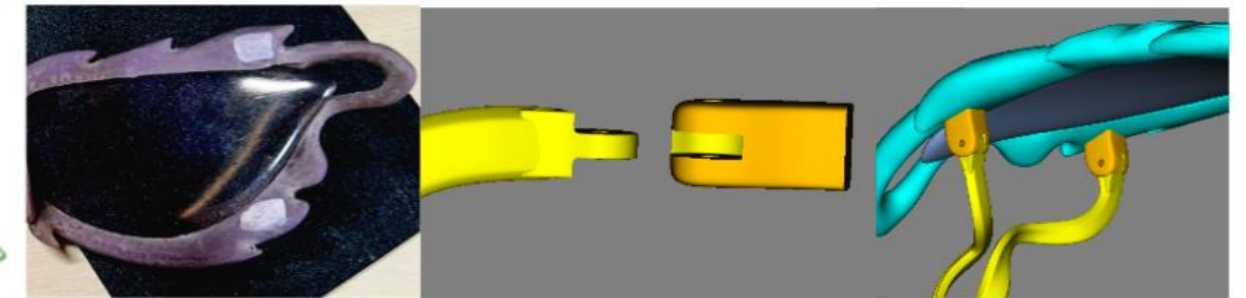
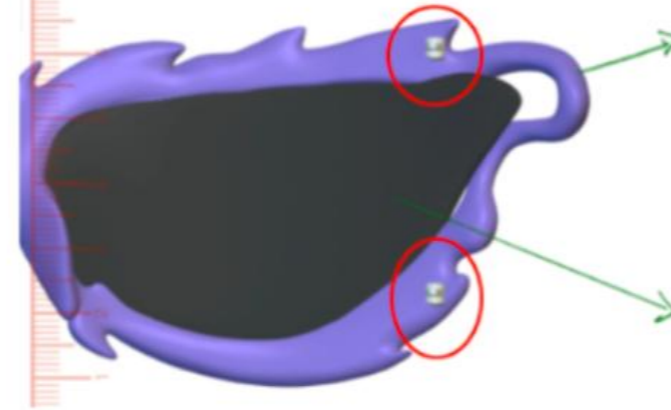
need to test the Hinge work?



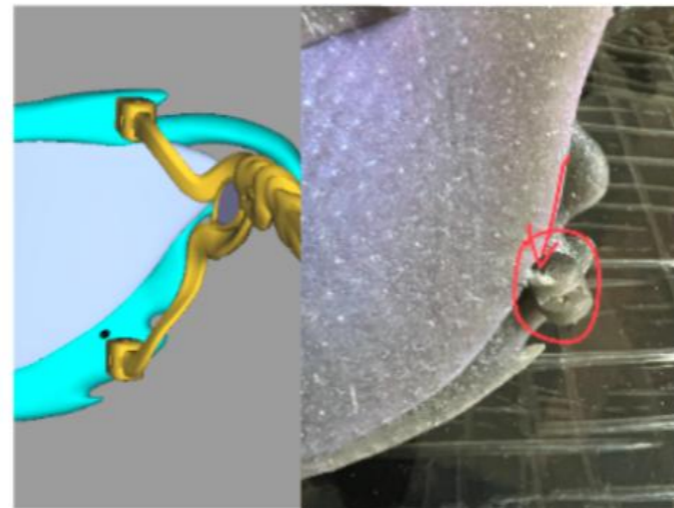
## Identified Issues.

- ① The connection method between metal temples and 3D printed resin frame.
- ② The properties of 3D printed resin
- ③ Adjustment of the position of the lenses installed on the hinge
- ④ polarised 3D printed resin post-dyeing and visual effect of the resin surface

## Production Adjust.



widen and thicken the hinge structure to ensure it can support temples



lower the position of the hinge to prevent scratching lenses

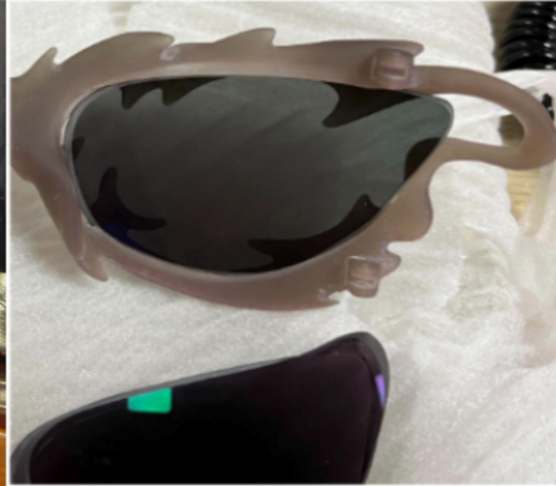


post-dyeing to enhance the resin's appearance  
spray the gloss / half-gloss protective coating.

Post-dyeing



customised lenses and assembly



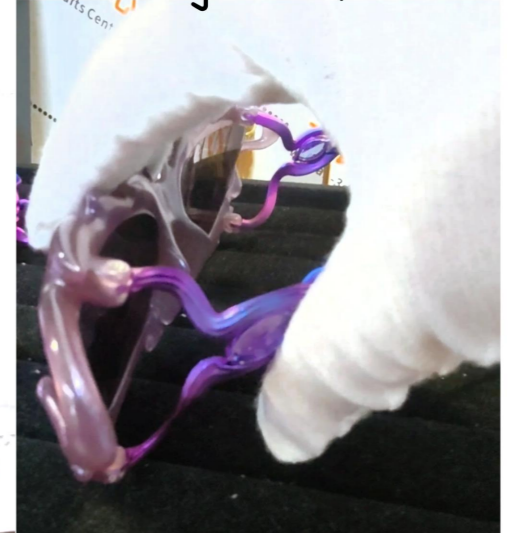
Sintering titanium metal powder



titanium anodizing



assembly two parts



# Nail ring

collision



Nails Drop  
ring → collision (extreme Yin)

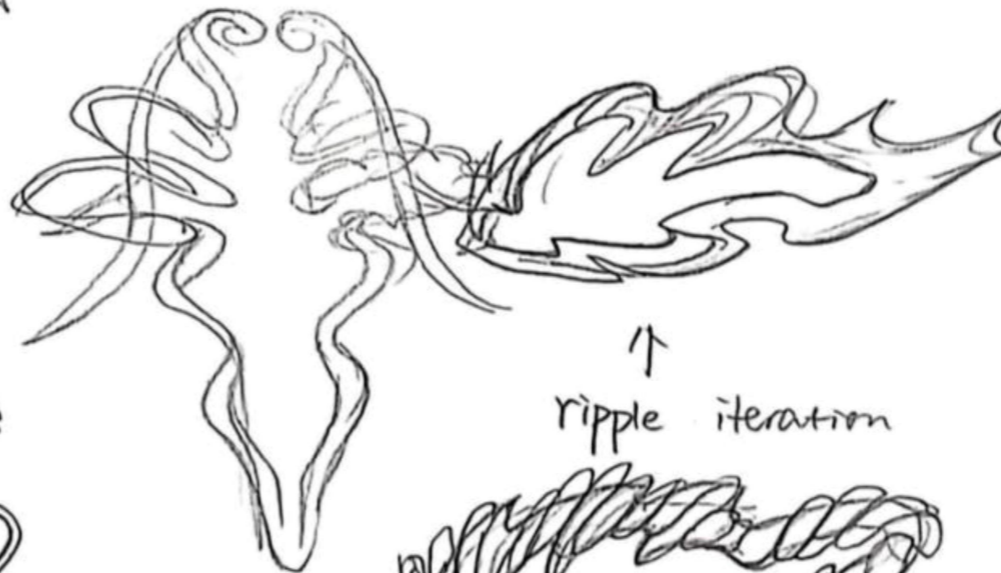


Convey a very dangerous sharp Energy.  
Spikes and twisted water  
symbolize a force of extremes,  
corresponding to the Yang of the  
eyewear frame.

Eye suggestion.

soft ↓

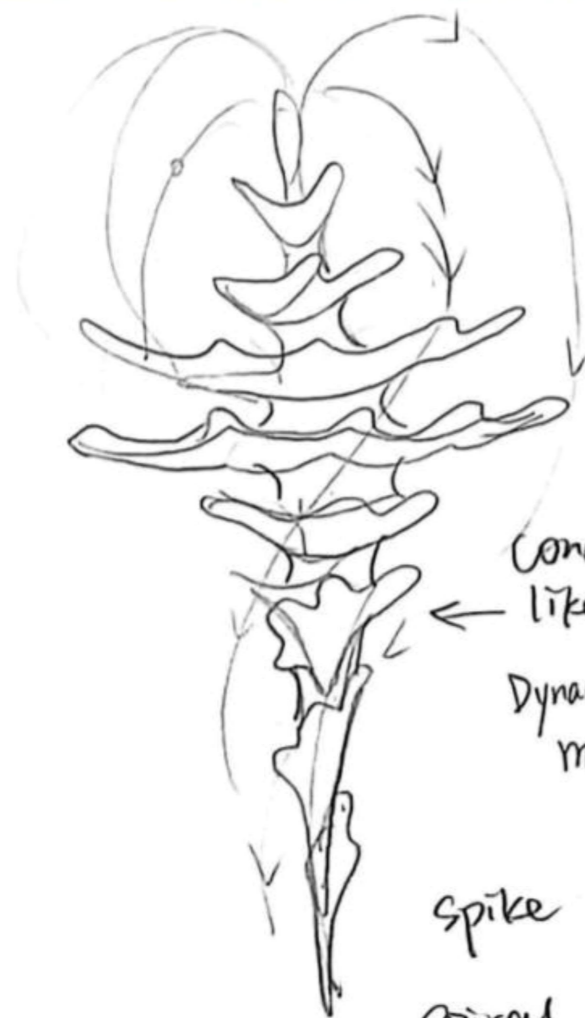
↓ sharp



↑ ripple iteration



sharp Lip / Eyes



→ like Fountain.

Conch.  
like

Dynamic drip  
movement

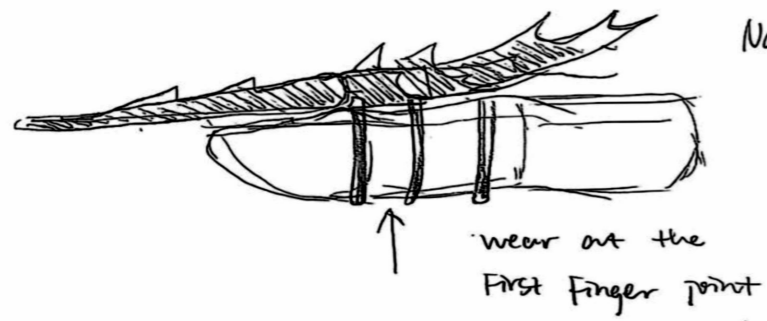
Spike  
Spiral

twisted.



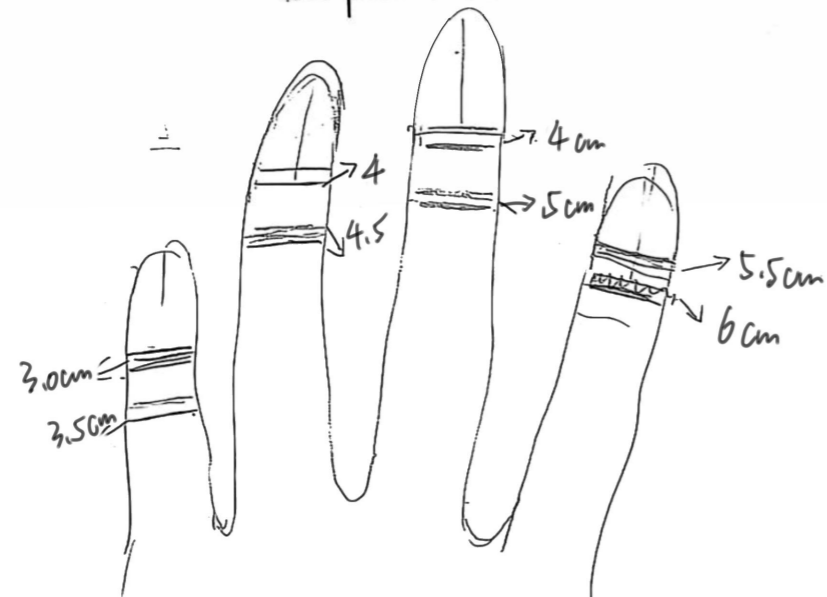
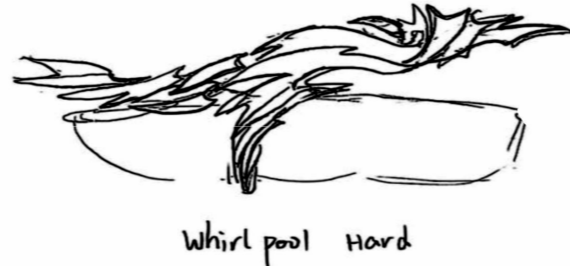
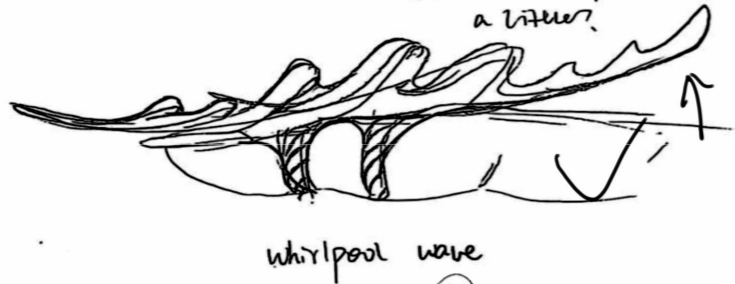
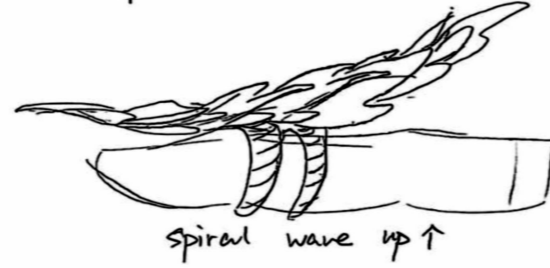
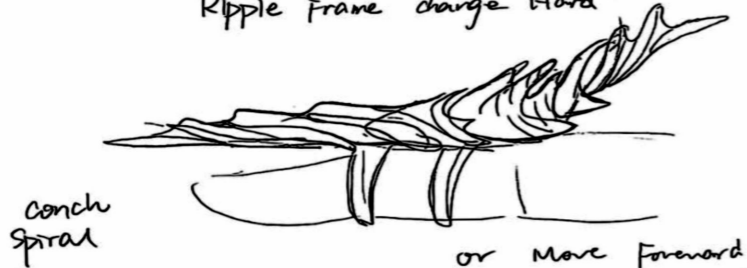
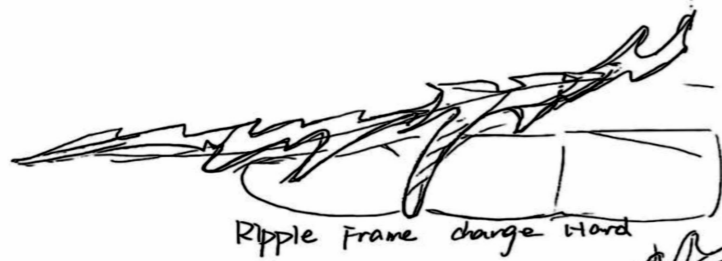
Drip



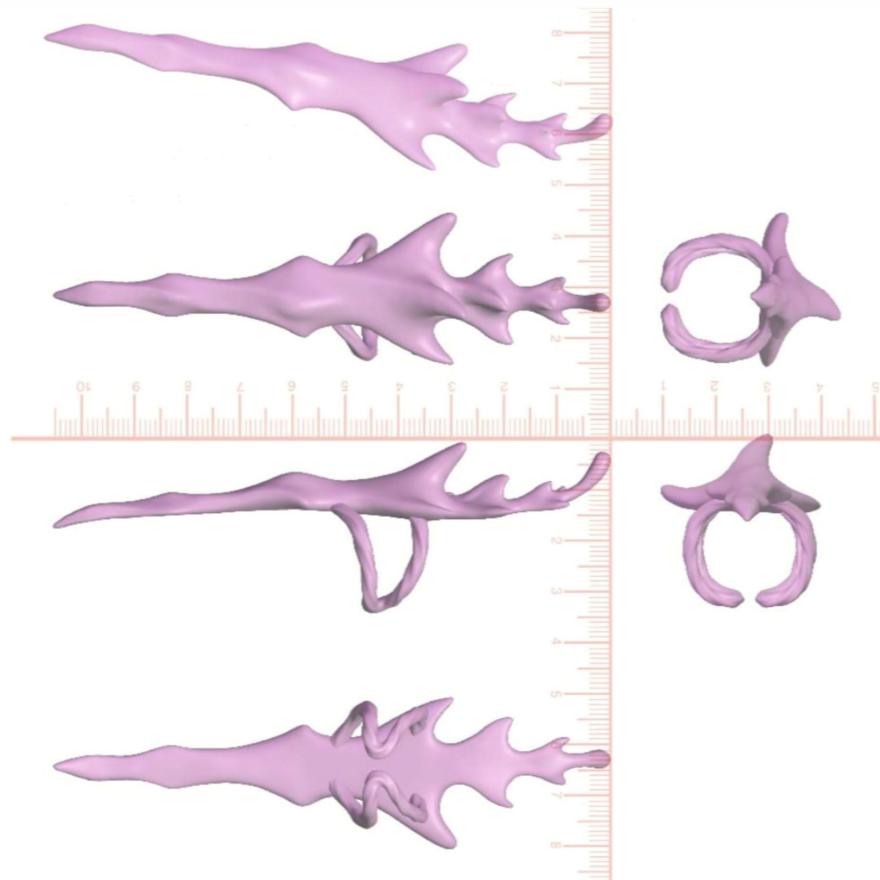


Nail Rings.

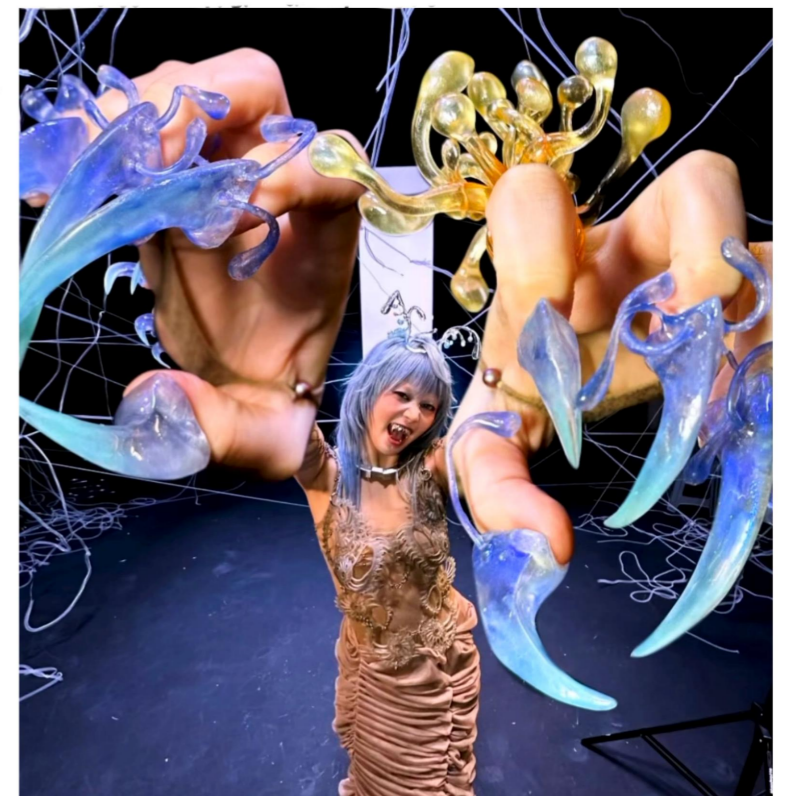
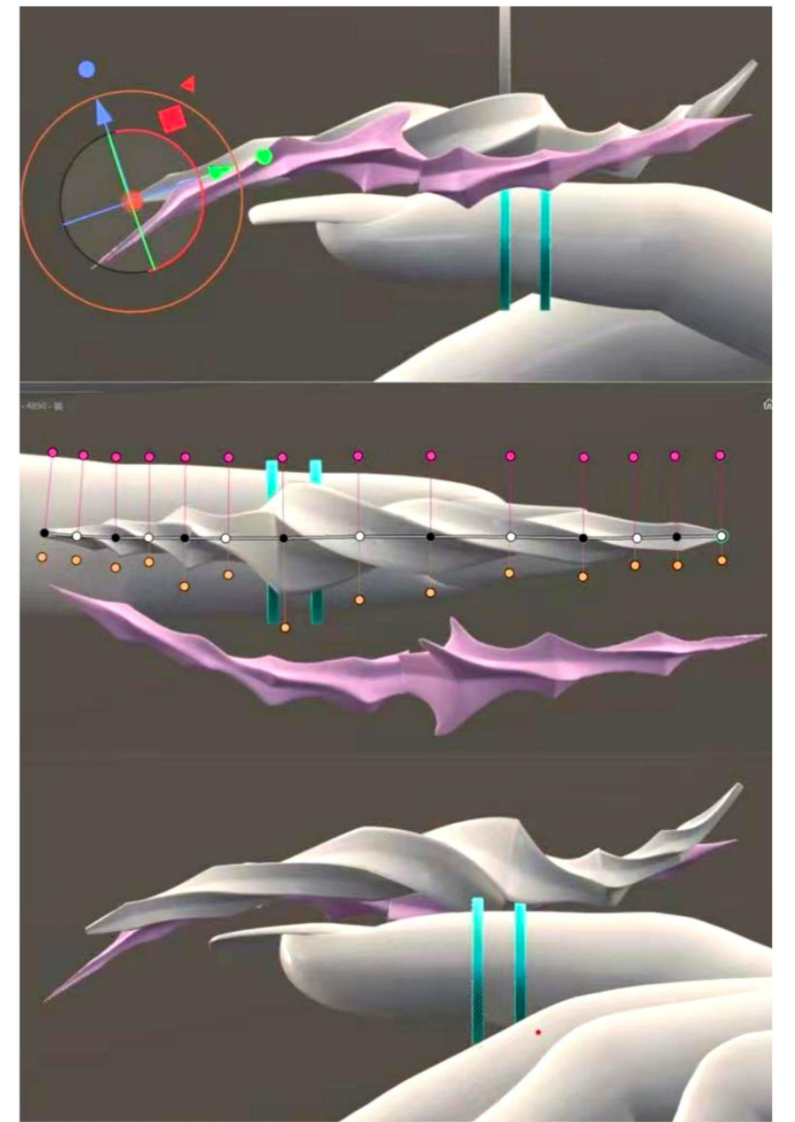
- Idea
- ① All made by resin?
  - ② A metal ring base + Resin body?
  - ③ Metal with Gemstone.



Designed to be worn on the first knuckle (like wear Manicure) open-ended ring

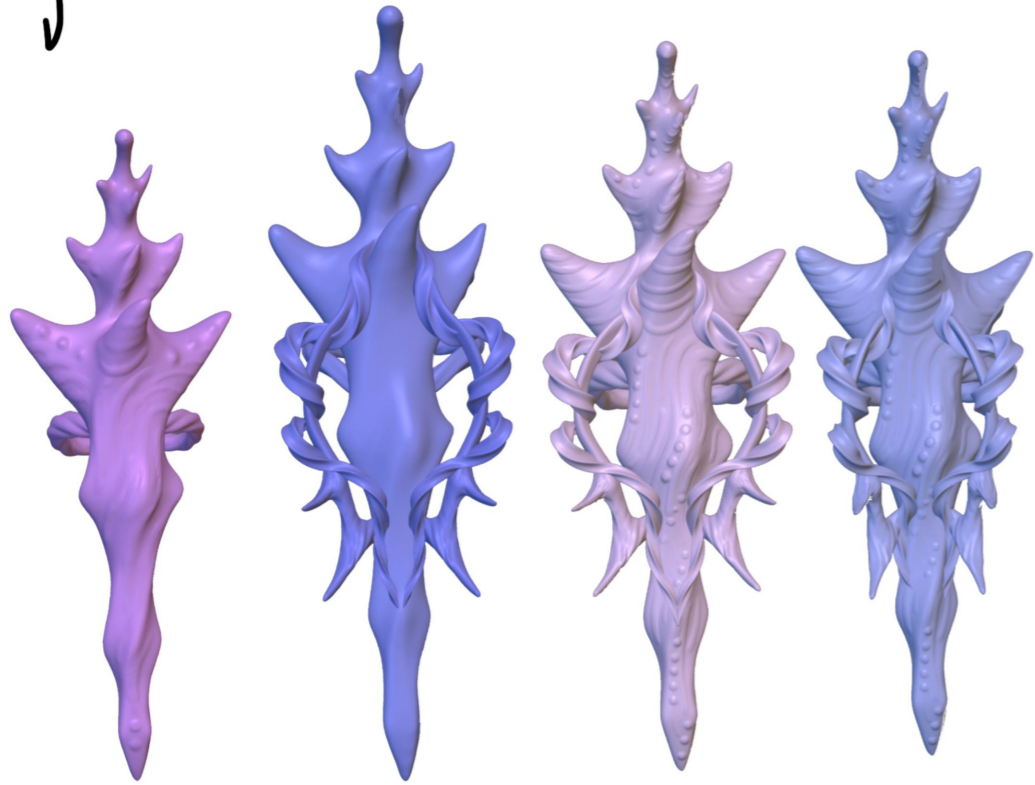


inspiration Reference  
↓  
Hinata from X6r idol group  
#subculture  
#visual kei  
Nail Design.



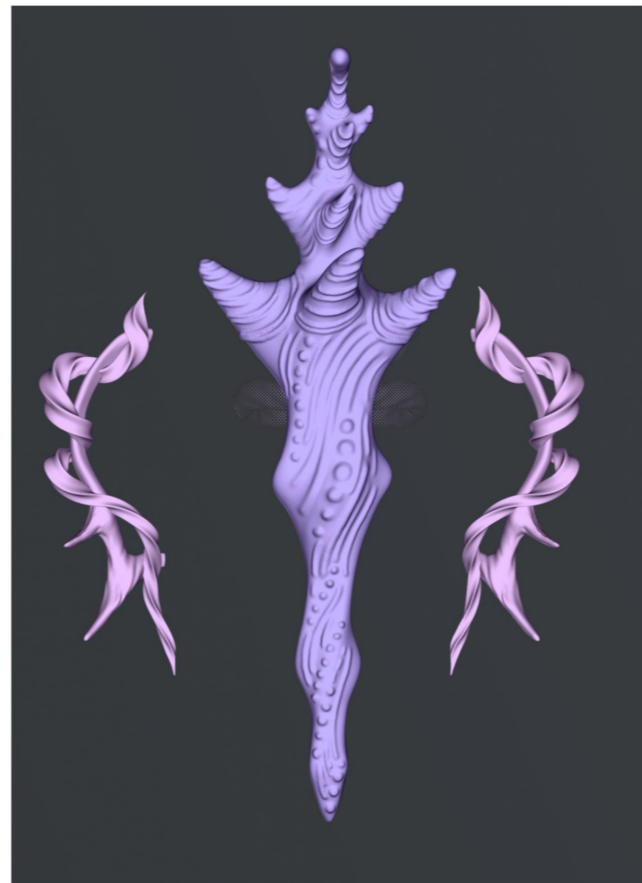
For Fashion shooting / pop group

# Digital Model development



Ver. 1

Ver. 2



Model disassembly test.

Curved lines enhancing the fluidity of the model surface.

Spiral twists on both sides represent the dynamic effect of water flowing and drip into the ripple.

Attempted to separate the curved structures on both sides for assembly, but the actual connection points turned out to be too small for resin printing

So decided to print the whole model.



Surface texture to increase reflection



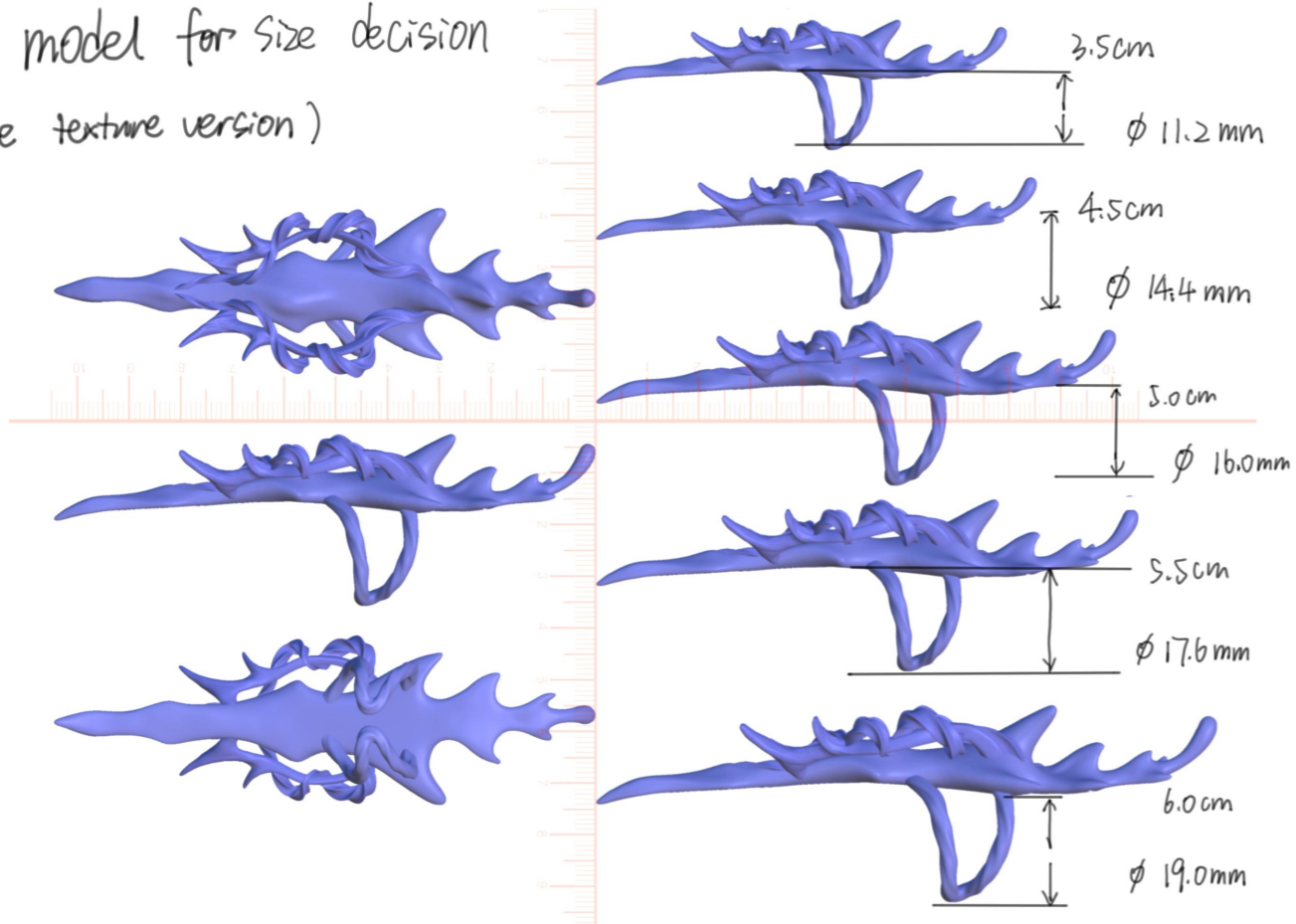
assembly point.



The components printed are inside the bottle cap.

(This also inspired me to iterate the chain design for the neck lace)

Original model for size decision  
(no surface texture version)

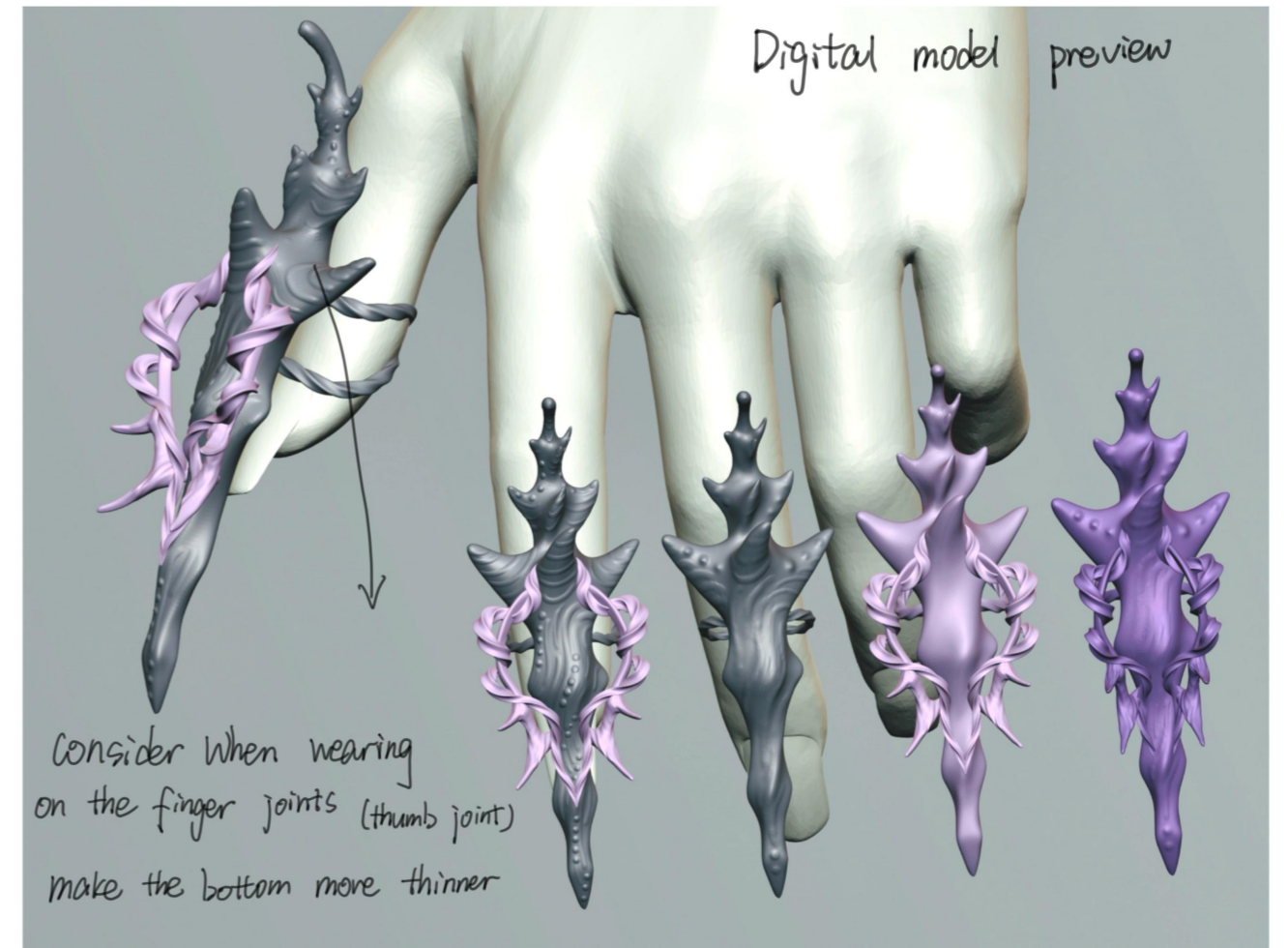


Ended-up Ring

Different version visual effect.

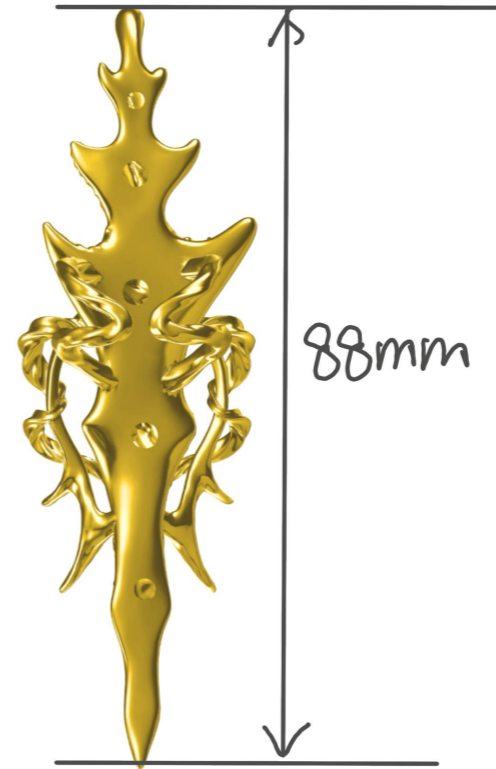
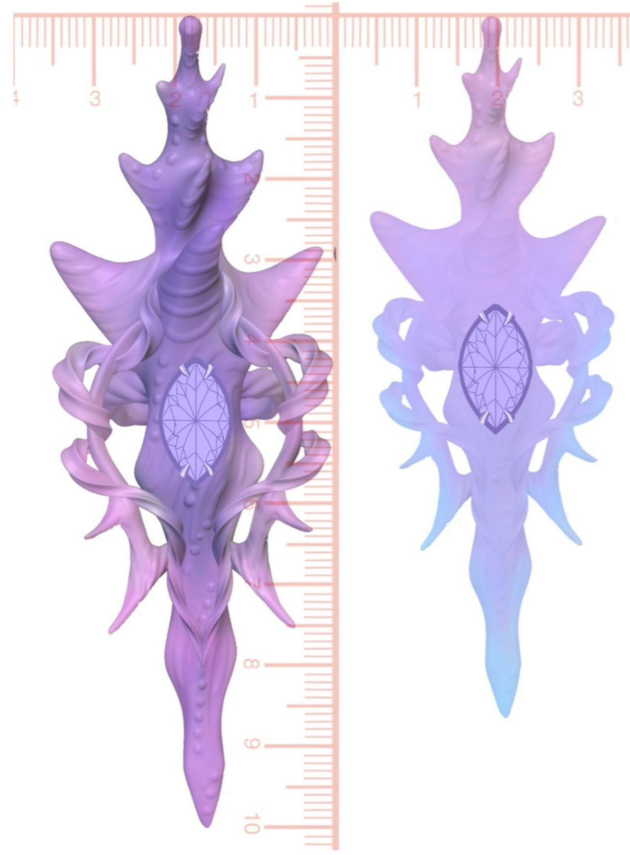


post-dyeing with polarised powder



Color test for first version Model





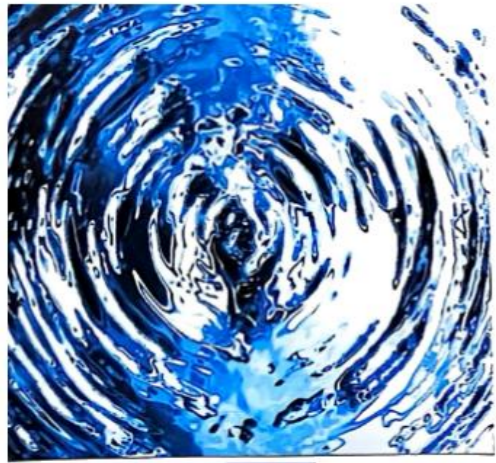
color Test



# Necklace

circulate





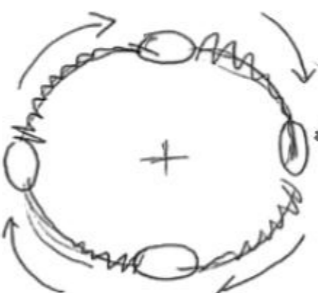
A sense of violent whirlpool

Top view

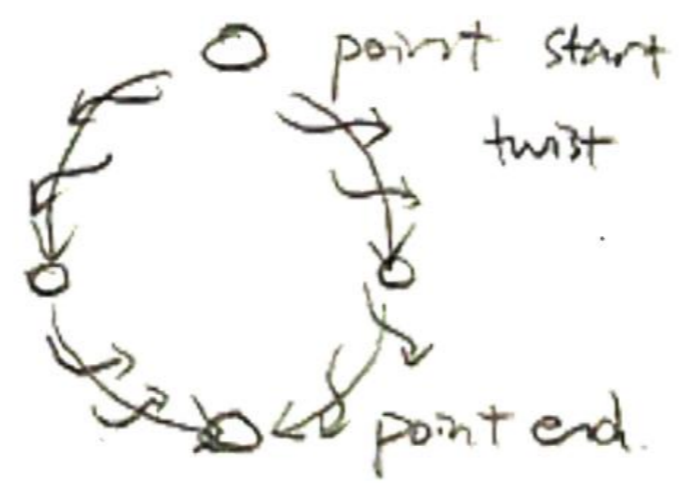


Front view

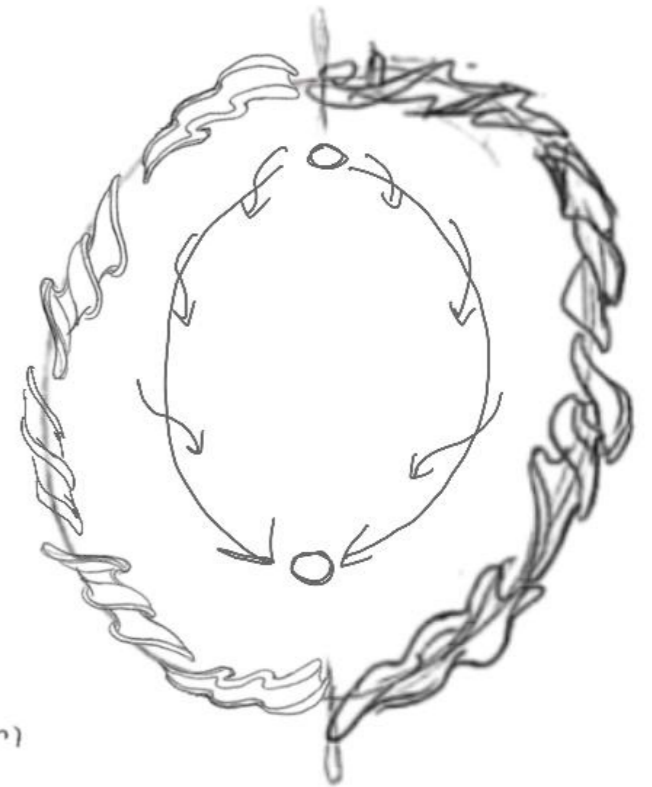
Reverse the flow of water



Circulate, split part



Balance of the Energy (circulation)



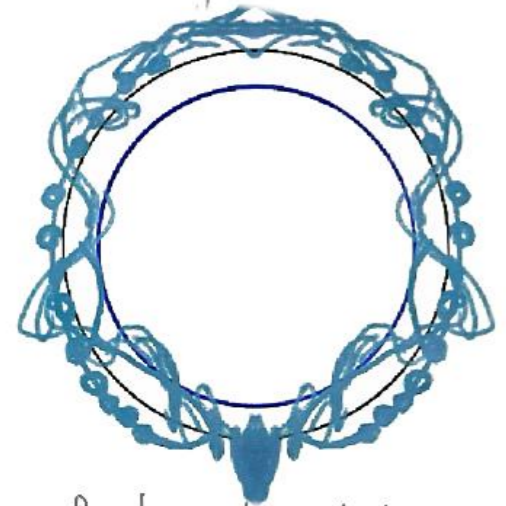
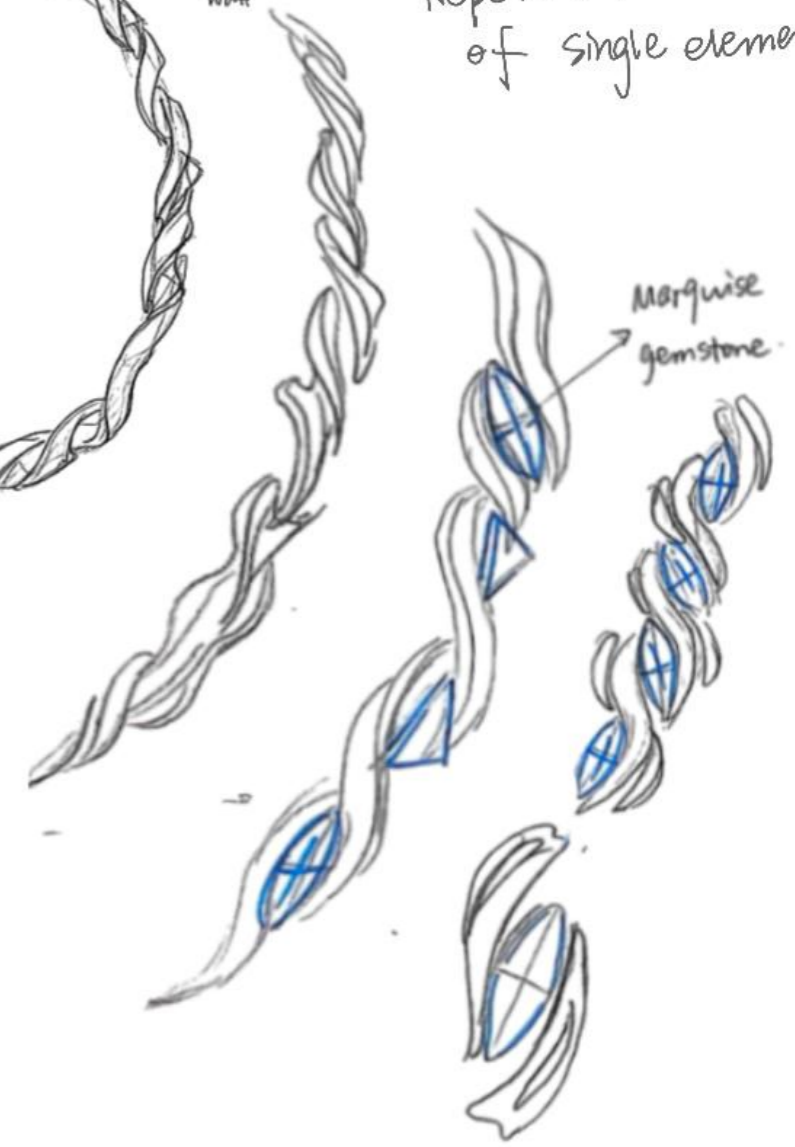
flexible assembly structure  
Circulation Flowing



Twisted water

Repetition of single element

Stackable chain for layering



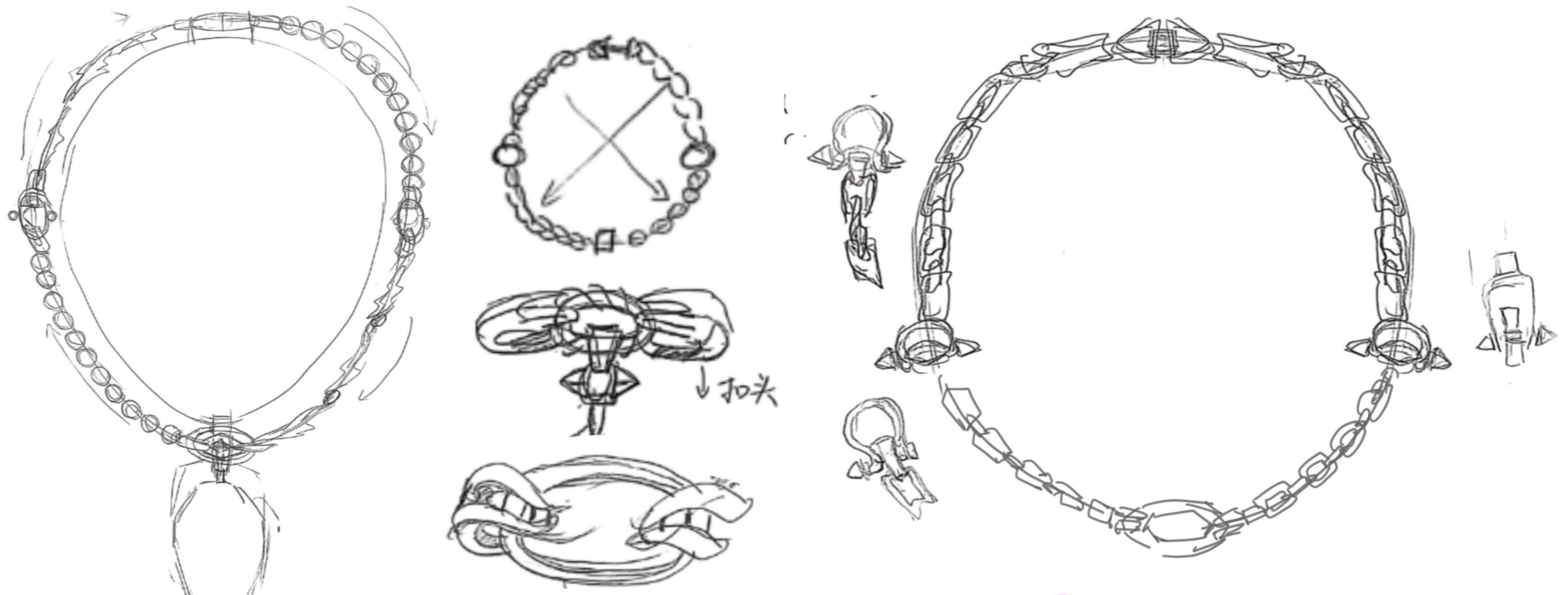
Beads and metal two layers twisted together (surrounding water flow)



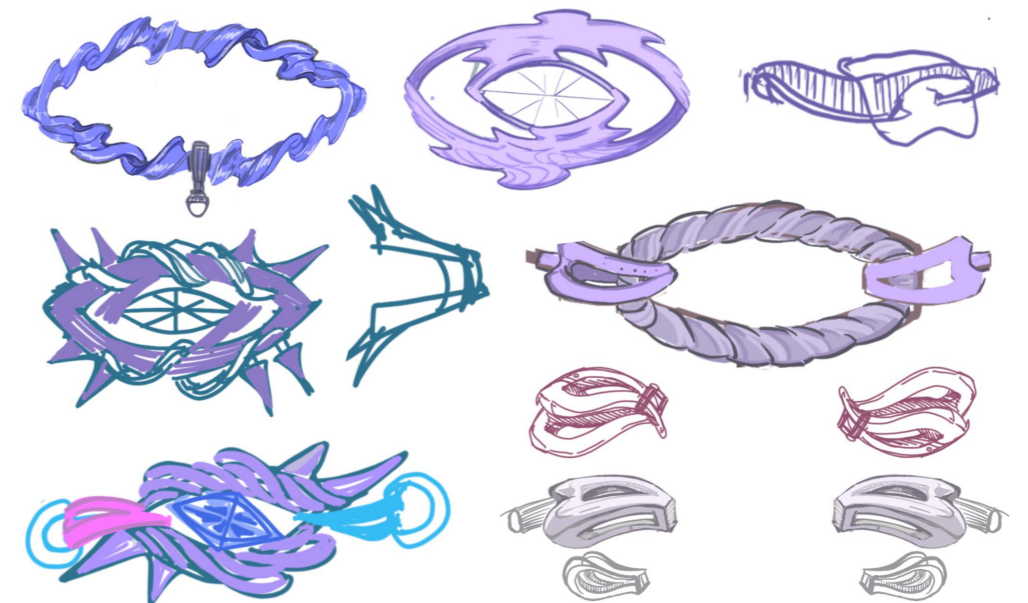
Marquise gemstone



# Beads necklace design.



Connector clasp (twisting water flow)  
visually echoes the ring (nipple piercing)

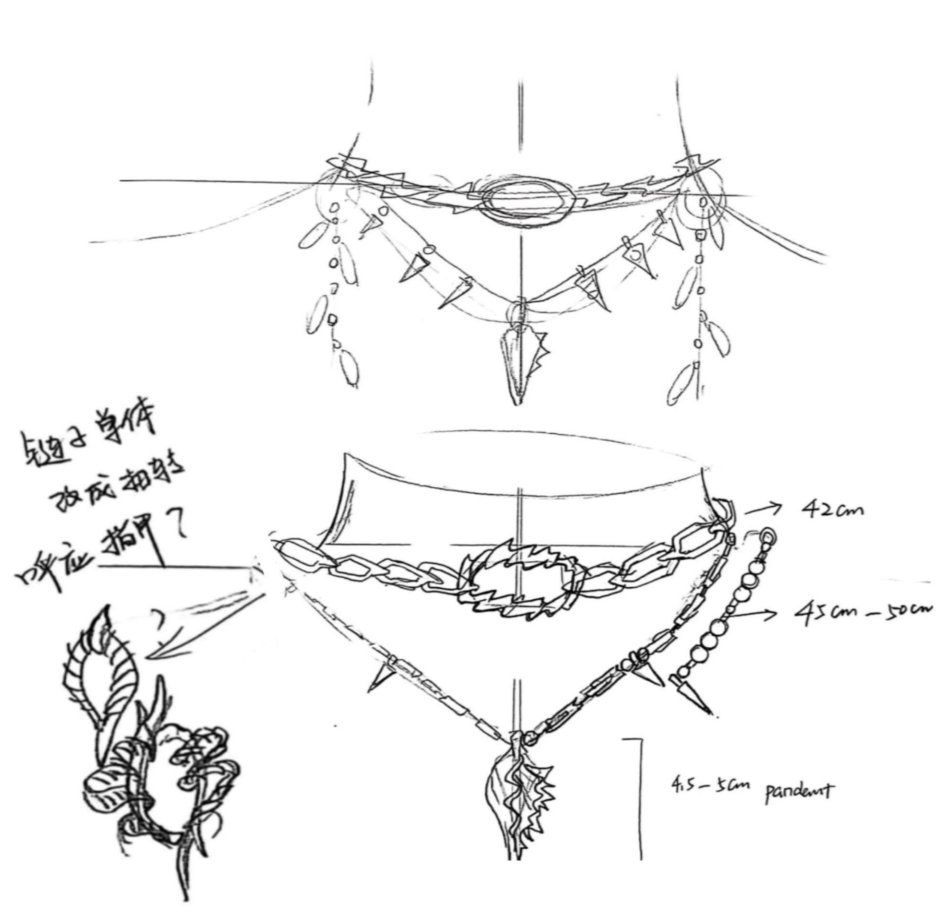


Echoing the piercing-inspired ring design, the necklace expresses bodily autonomy and challenges conventional identity expression

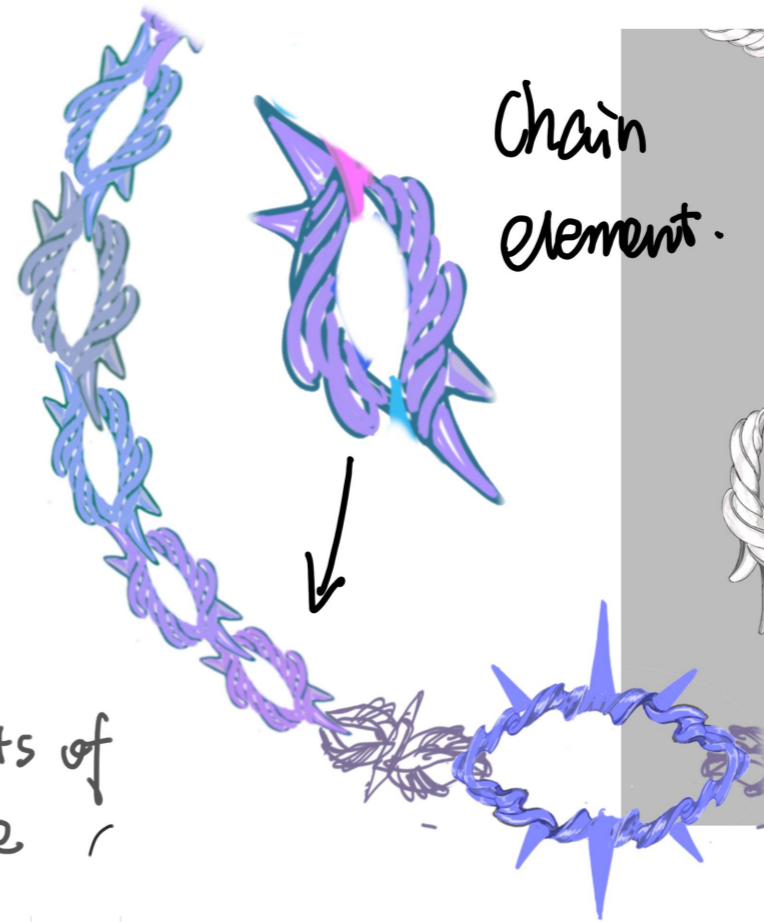
In shamanic culture, organ-based adornments symbolize shifts in gender temperament and spiritual states.

It challenges the stereotypical notions of traditional jewelry as 'elegant, passive, delicate' instead presenting power, desire, tension of identity.

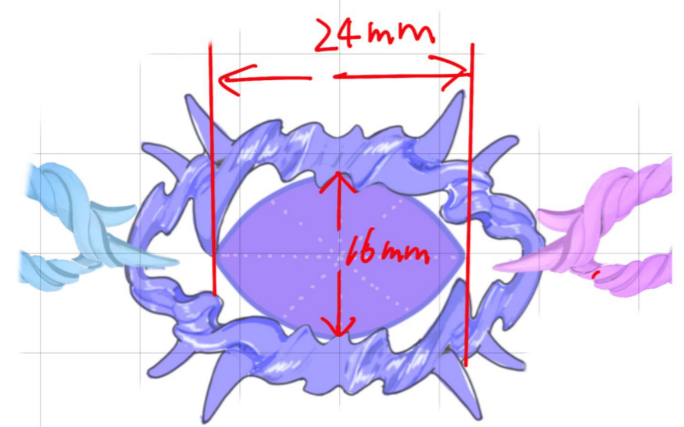
链子单体  
改成扭转  
呼应指甲?



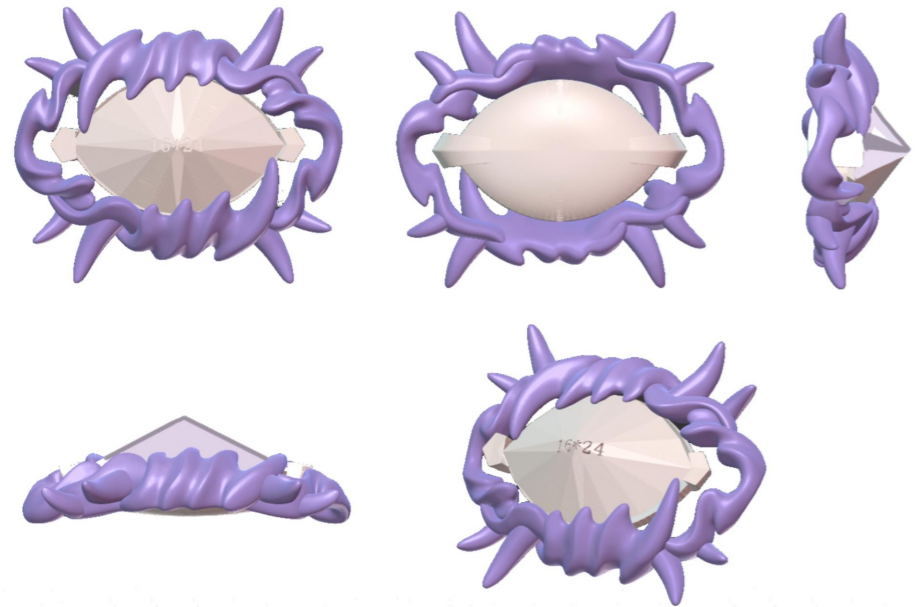
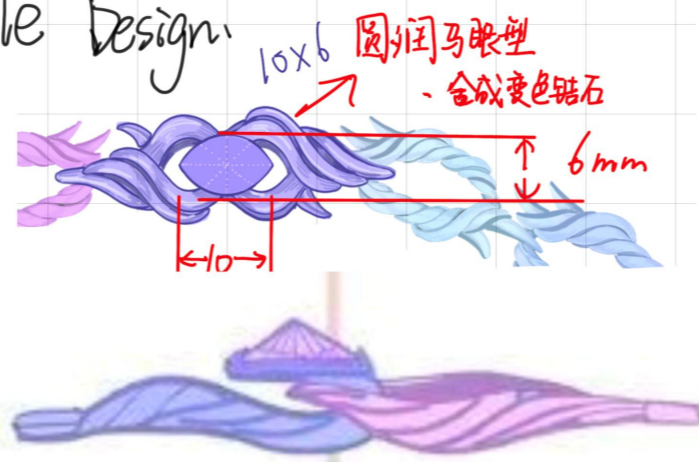
Redesign the elements of chain link structure



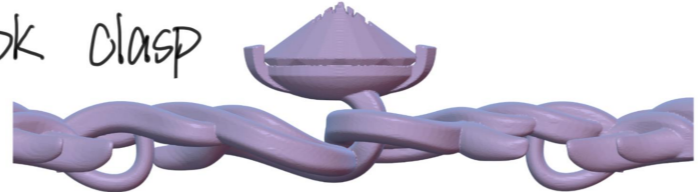
Chain element.



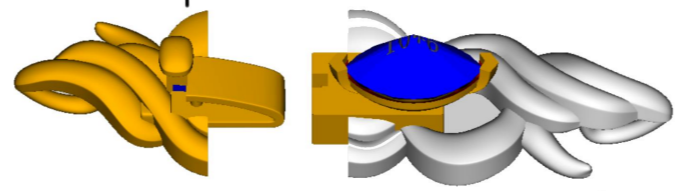
Buckle Design



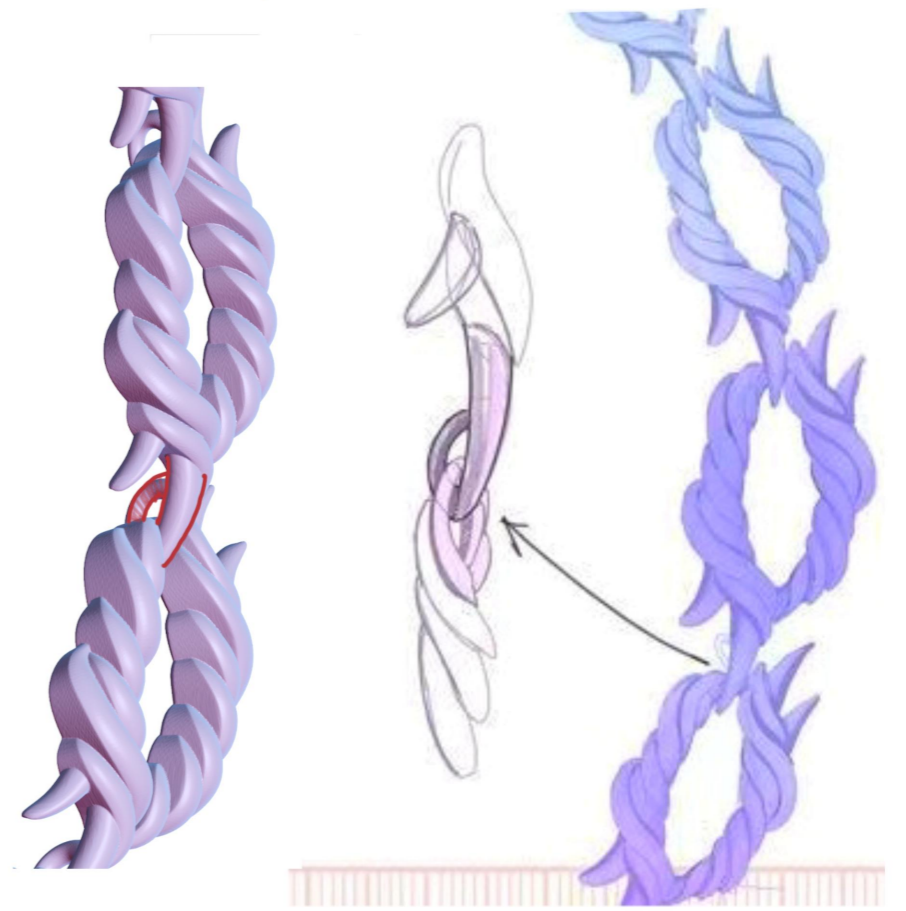
Hook clasp



Push clasp



The reverse-set gemstone stands out helping users quickly find the clasp position.



Sinking of individual chain elements to form a link with spikes

# Production Process



Add a movable structure to the back side of the chain



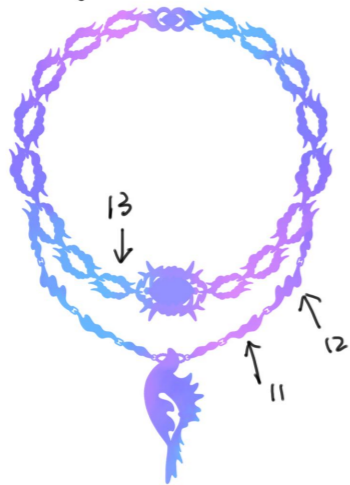
Titanium Primary matte texture.

Back view

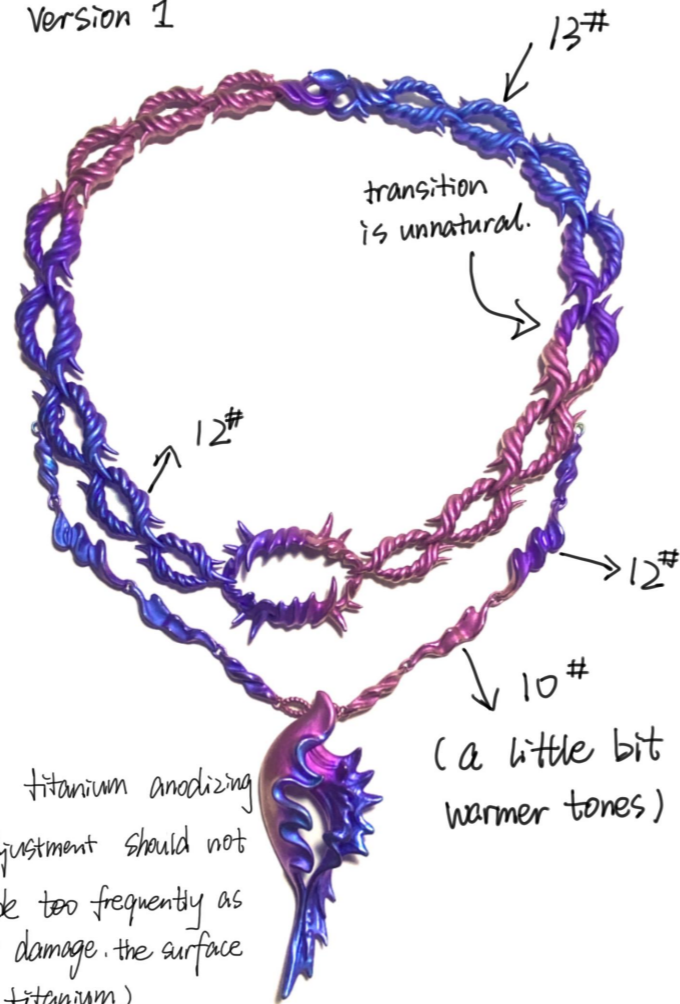


磨砂面  
titanium anodizing color palette.

target color

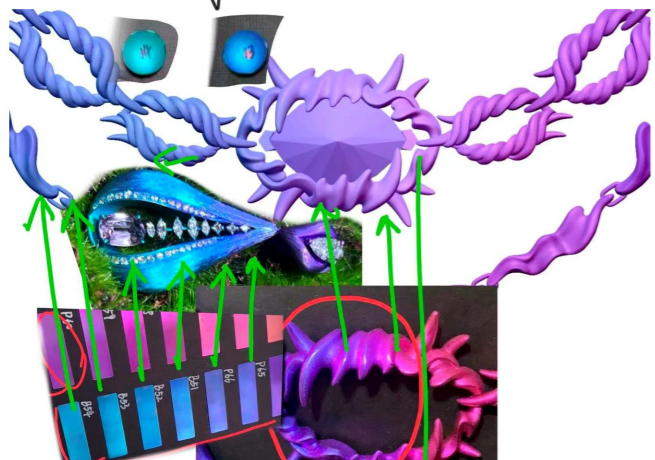


Version 1



Adjust titanium anodizing (p.s. adjustment should not be made too frequently as it may damage the surface of the titanium)

Color adjustments.



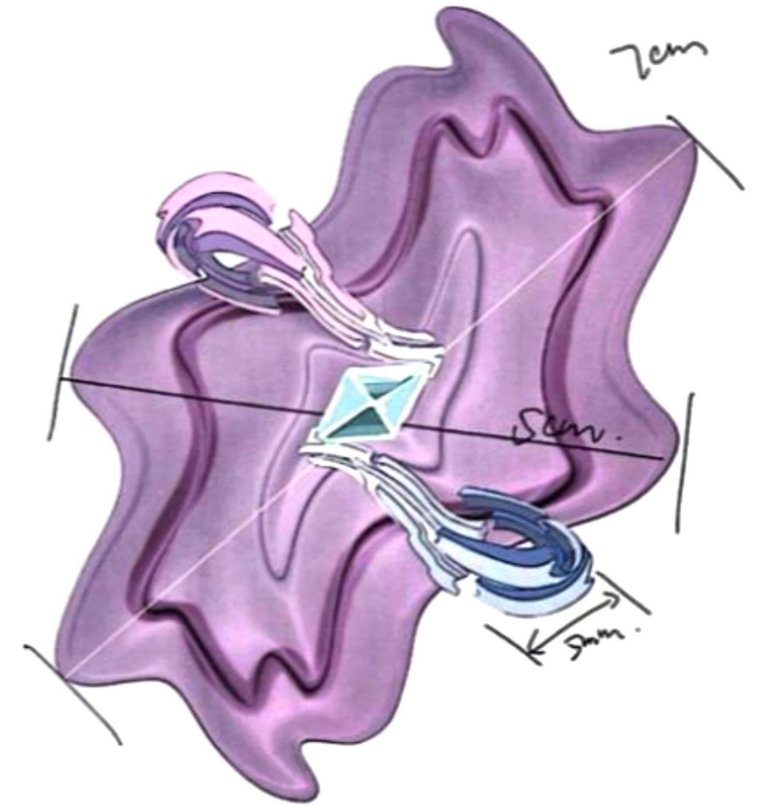
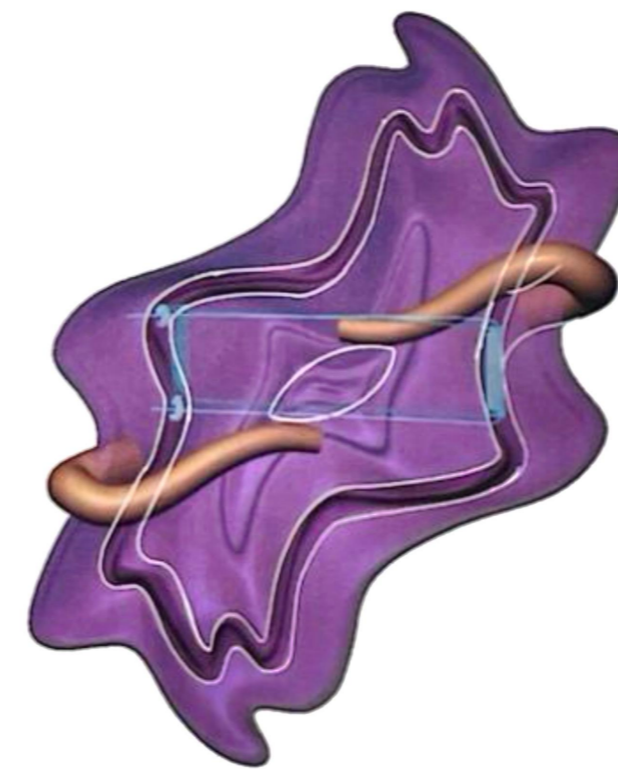
silver version. (the circumference of the necklace is 42cm wearing.)

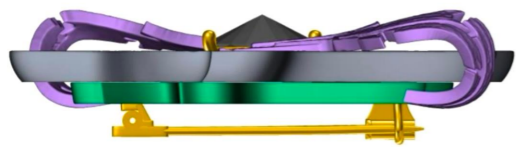
P.S: the circumference of 48cm will be looser for everyday scenes?



Final version.  
↙

刺球骨螺  
*Hexaplex radix* (Gmelin, 1791)





7mm\*14mm 1pcs

