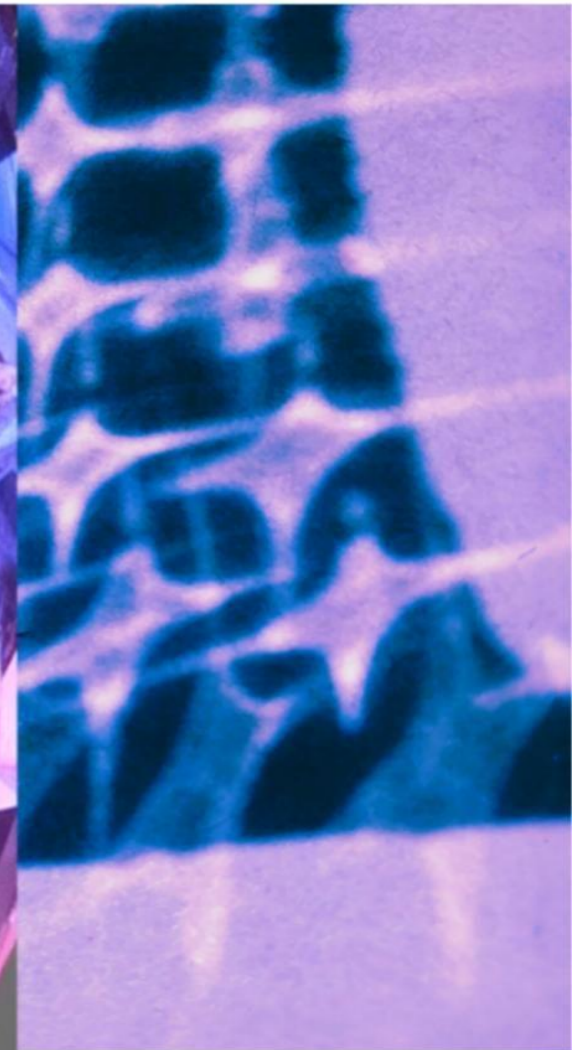
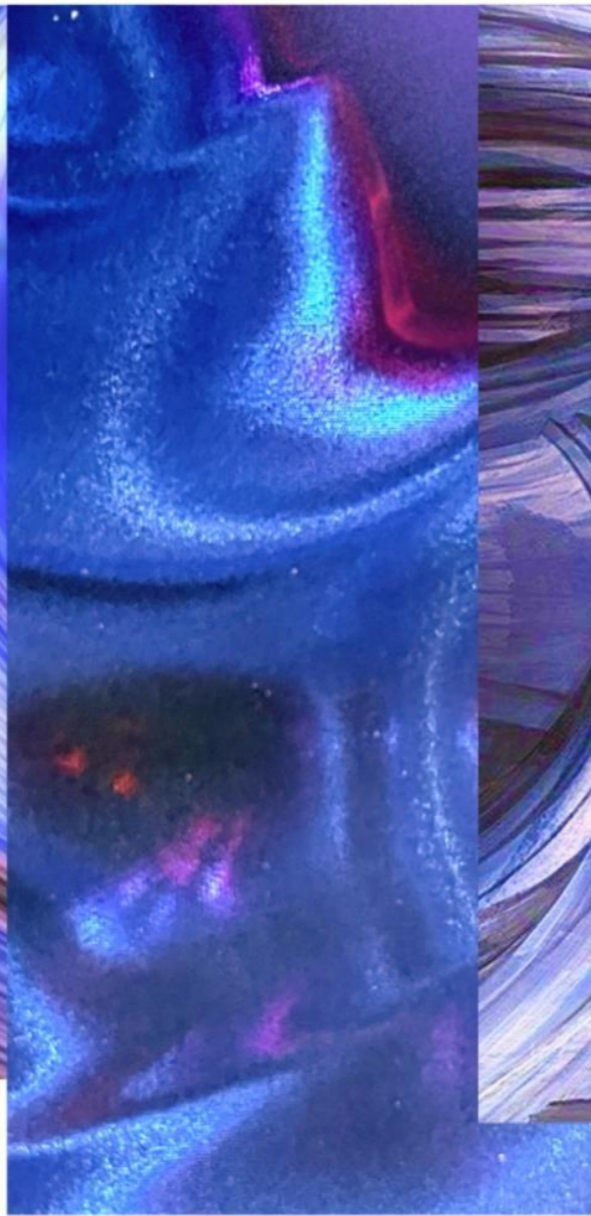
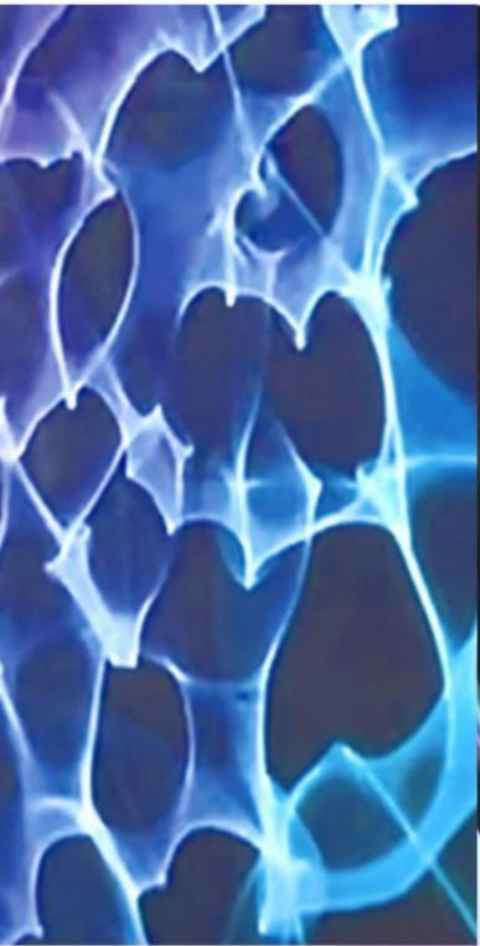


Twilight Zone

Guangkuo Zhao



Reflection of Light

Fluidity

Virtual World

Color Change

Formula for polarized Resin

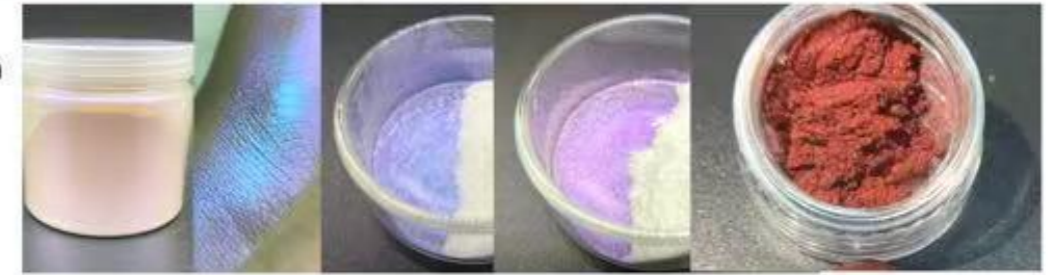
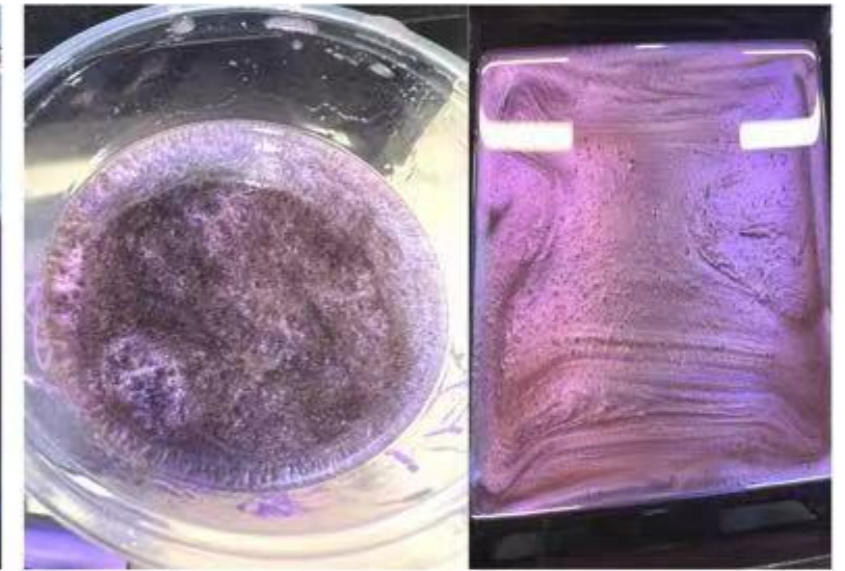
Elegoo + SUNLU
 ABS Resin 3.0 Pro + Solid Black + Clear Resin
 Powder C20-22 Pearl powder purple
 Polarized powder 1415 Powder 2001
 3D Red powder Laser powder 600#

Polarized color

- ① pink
- ② purple → blue

Increasing the surface texture and making the visual effect richer under the reflective light

底層 5s 層厚 0.05mm
 曝光 3.8-4.0s
 底曝 40-50s

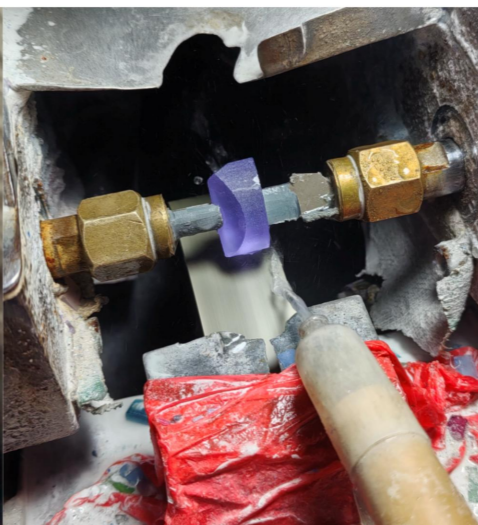
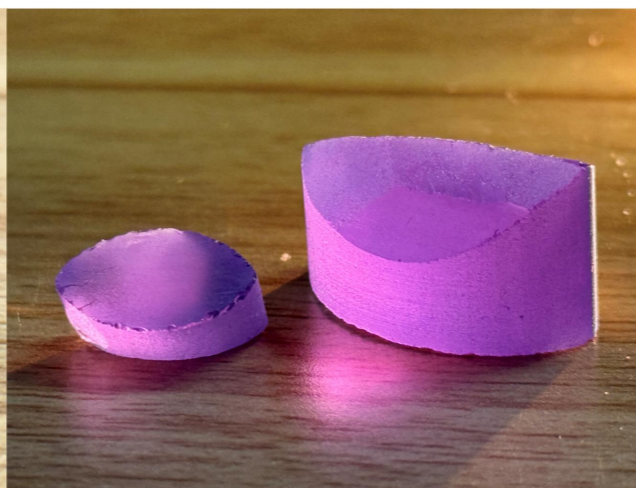
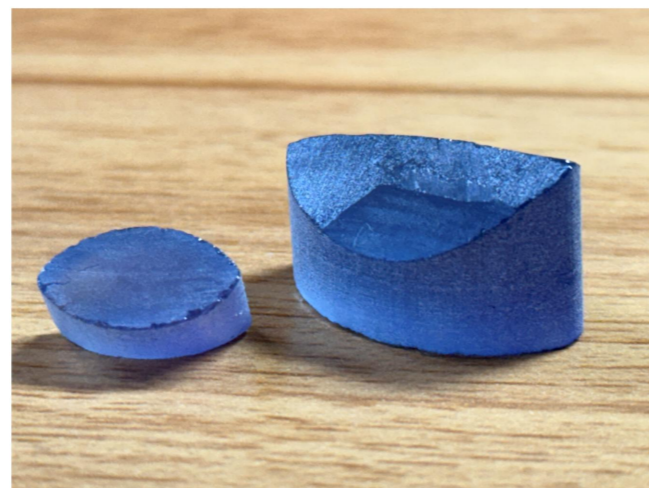
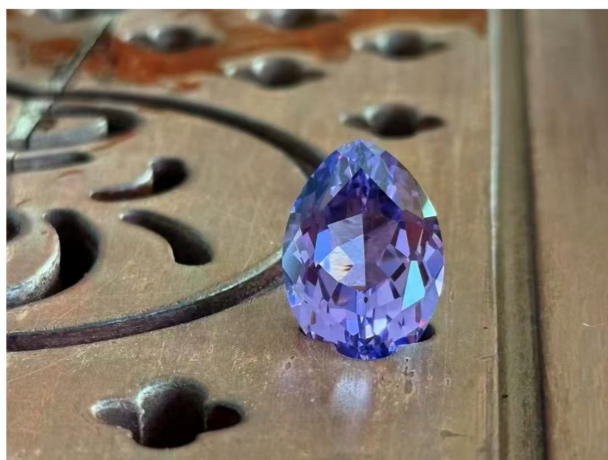
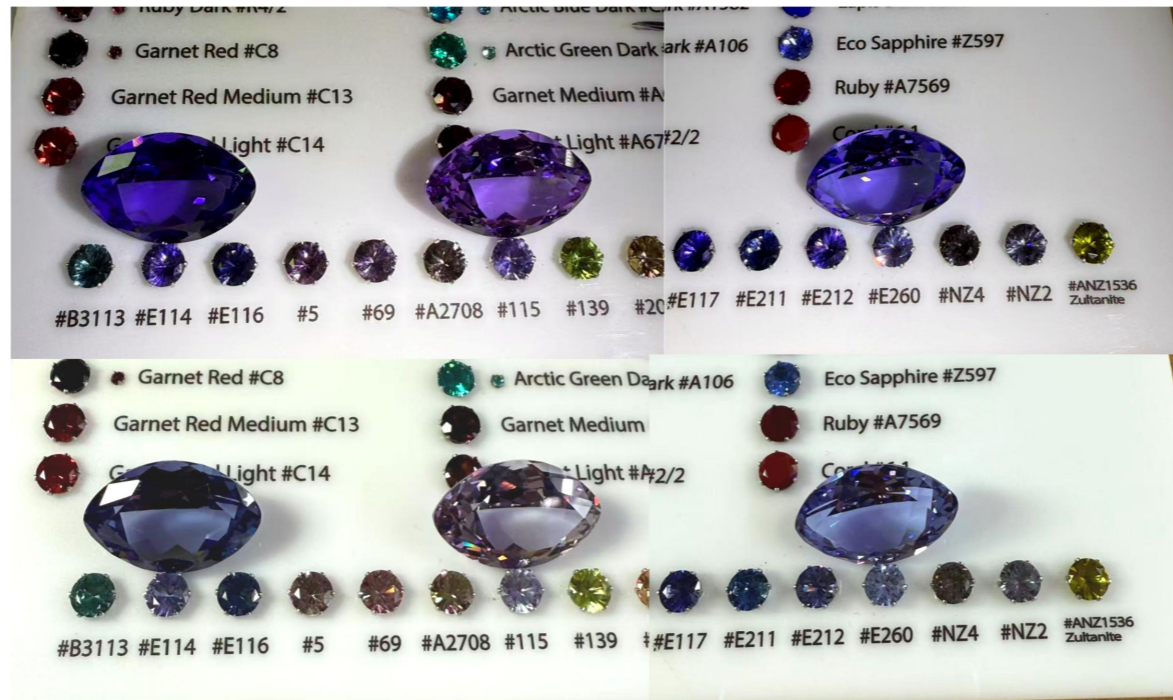


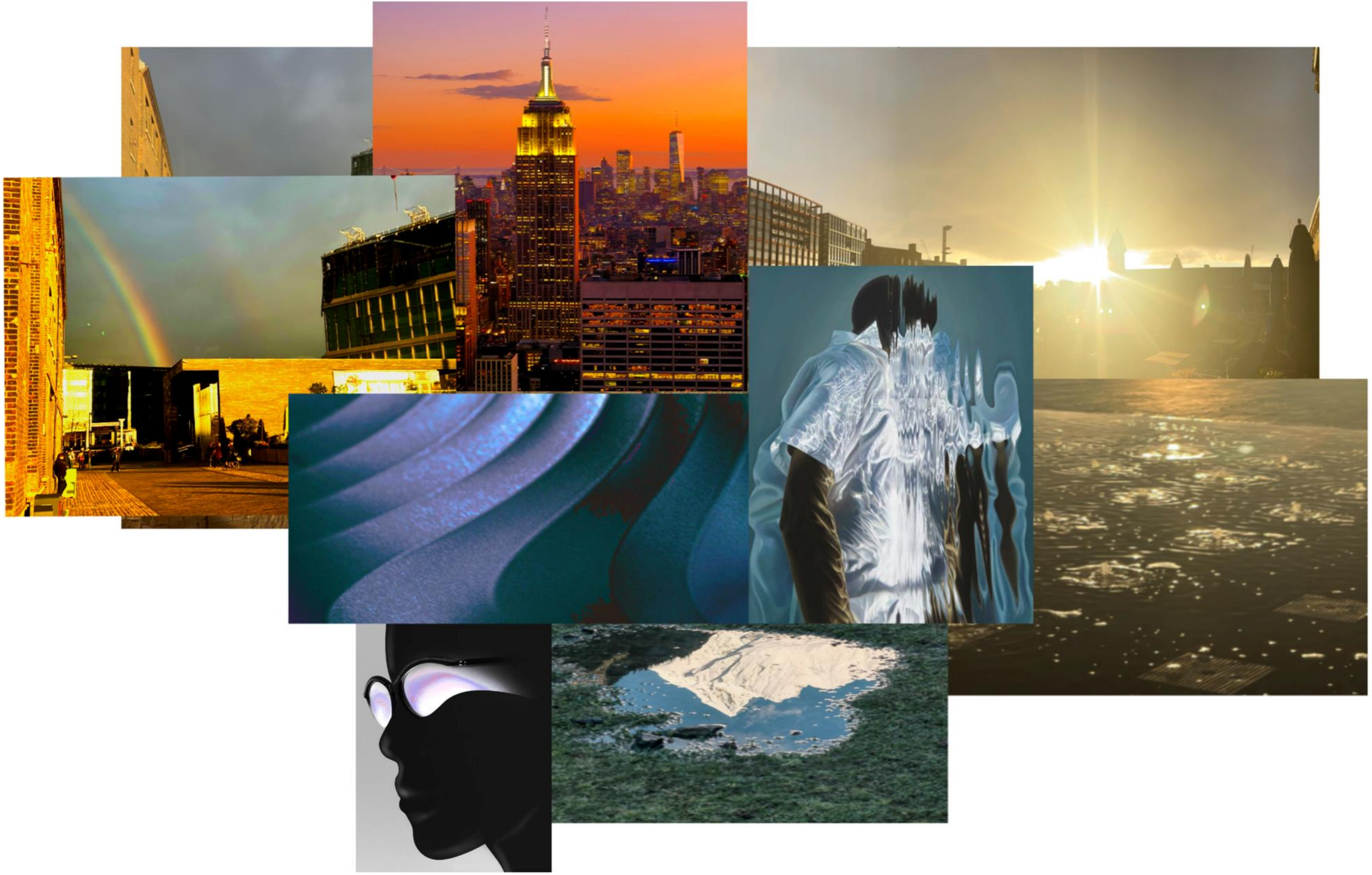
Glossy spray effect



translucent







RESEARCH

Drag culture — 1920s / Pansy Craze.

↓
whoops
ohLaLa phenomena

In the 1920s, New York's queer culture gained remarkable visibility on the city's stages ~~in the~~ Broadway producers and night club owners put on plays and acts exploring gay and lesbian themes.



< Double Harness >
The production studios didn't like his camp comedy style and his character's scenes were cut altogether because of his too feminine in temperament.

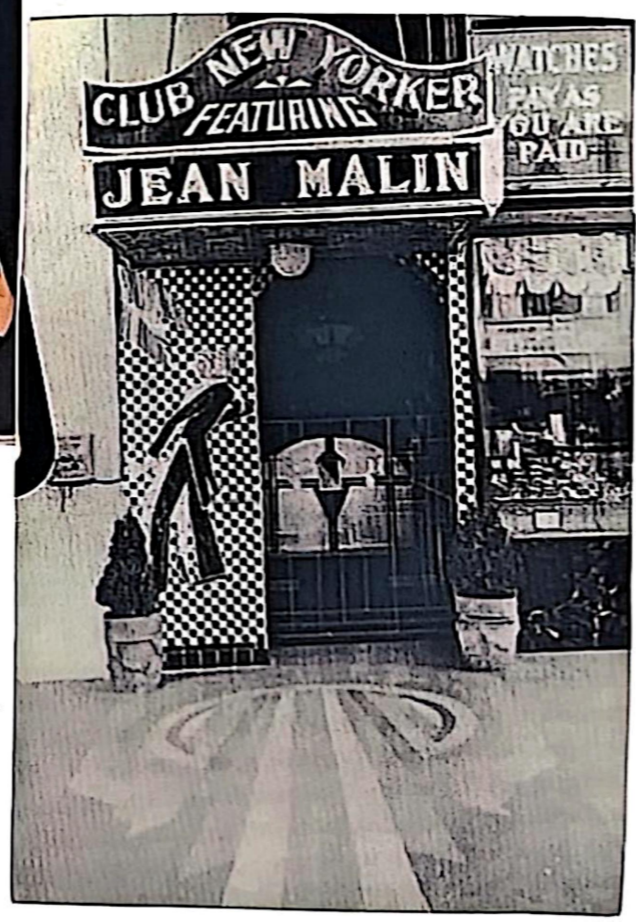
1932 · JEAN MALIN
< Arizona to Broadway >



1930s Francis Renault

1917. Julian Eltinge

Vaudeville performance gained traction in the early 20th century in the United States. and It combines comedy, music, dance and burlesque to create an offbeat type of live entertainment.



- The pansy craze peaked during the strictest period of prohibition. (1920-1933). (out gay culture flourished and driven back underground)
- 1950s-1960s Law enforcement cracked down on the LGBTQ community.
- Los Angeles followed New York's lead in banning female impersonators from performing.

The rise of drag ball culture in the 1920s.

— Harlem Renaissance. (1920s - 1930s)

It was an intellectual and cultural revival of African American music,

dance, art, fashion, literature, theatre, politics and scholarship centered in Harlem, Manhattan.

Hamilton Lodge Ball. → Drag Ball culture.

It reached the peak of its popularity in the 1920s and early 1930s, as the Harlem Renaissance and 'ansy Croze drew wealthy white New Yorkers and celebrities into Harlem nightlife.

⊖ Although drag balls were interracial at the Hamilton Lodge, prejudices were still at play.

⊗ Judges generally favored white, Eurocentric features.



top hat.
tuxedo
sexed-up
growl



GLADYS ALBERTA BENTLEY.
< Drag King > 'gorgeous man'

She famously flirted with women in the audience.

Performing at the Lafayette Theatre alongside a troupe of six effeminate men.



Professional impersonators vary from "straight" men who simply enjoy aspects of transvestitism, to all-out hormone enhanced transsexuals with breasts.





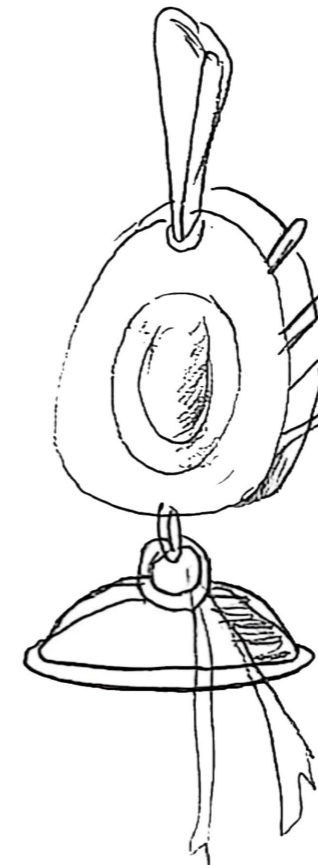
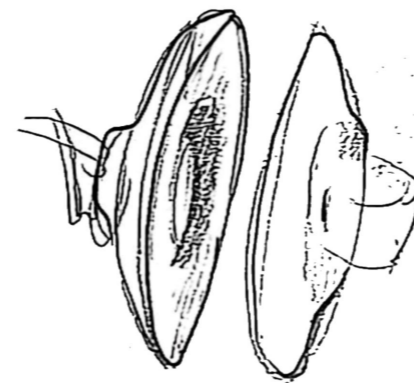
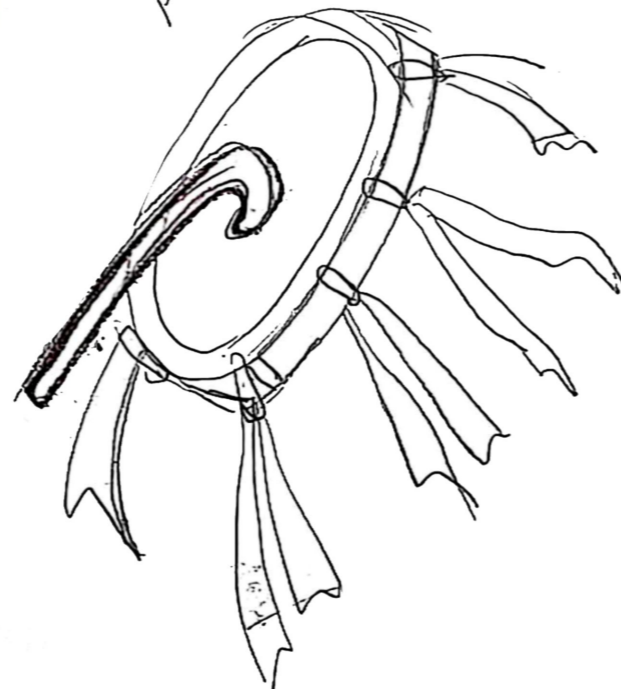
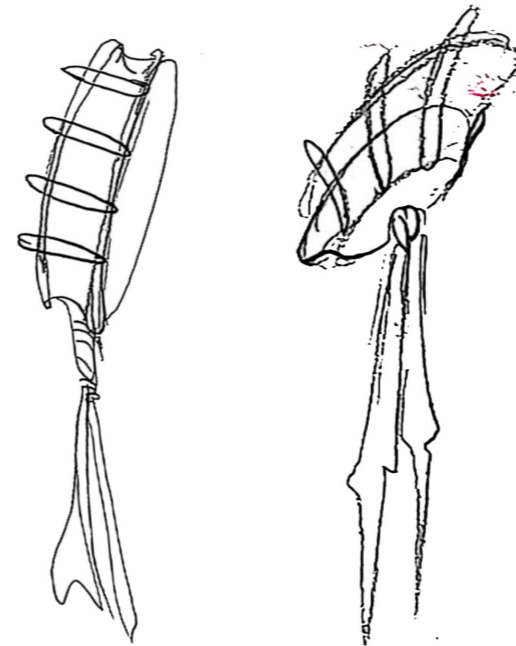
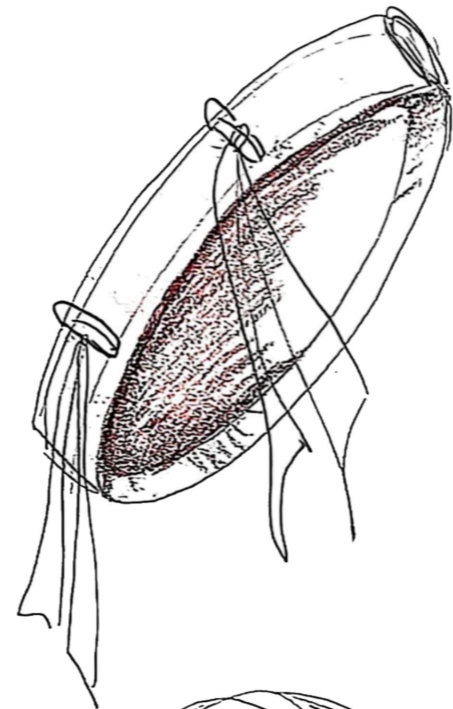
Tympanum (hand drum)

In ancient Greece and Rome the Tympanum was a type of frame drum or tambourine some representation show decorations or zill-like objects

It was played by worshippers in the rites of Cybele.



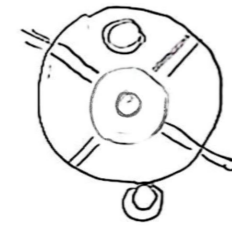
(354 AD) Illustration of Filocalus Gallus (theatrical performer for the Megalesia.



Cybele holding a tympanum



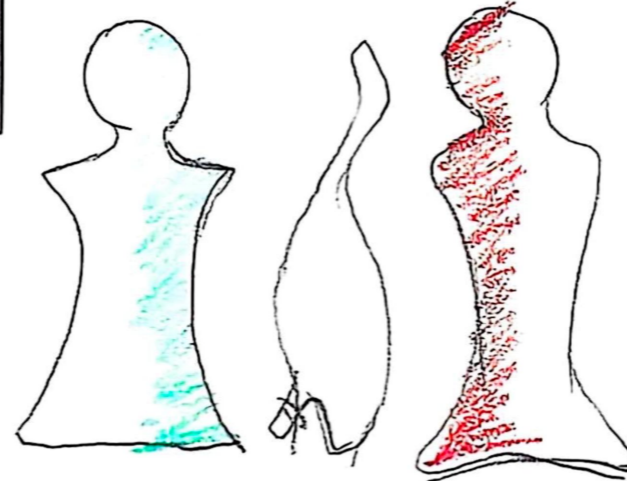
Yakut
The Siberian shaman
for example, wears a caftan
(a unisex garment) decorated
with iron disks, bars, and
other items which symbolize
various aspects of nature
such as the human body
including two orbs for breasts.



human bones
ribs
arm
finger bones
on
apron
which are
representation
of snakes
lizards
frogs
other animals

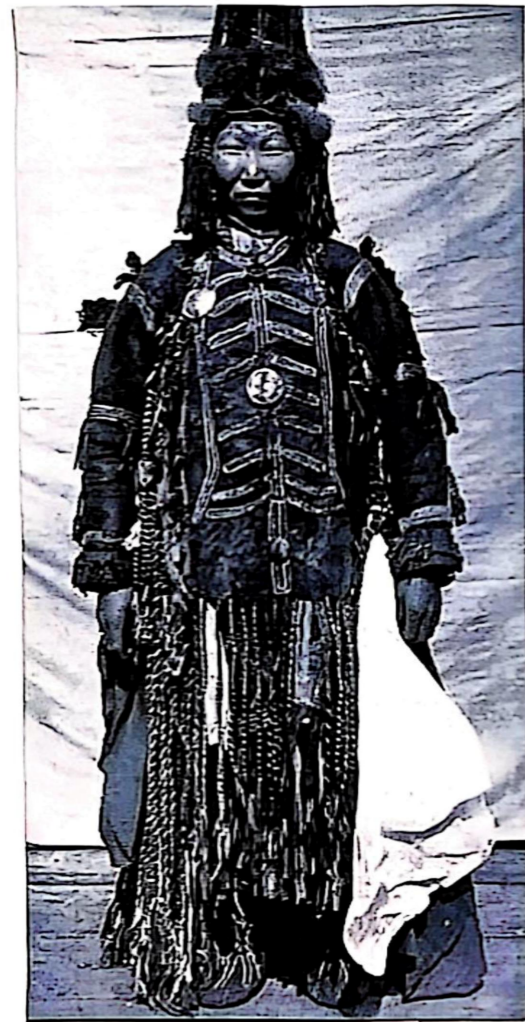


← have to
Balance the energy
Between female and male
as a third sex
In order to work powerfully.

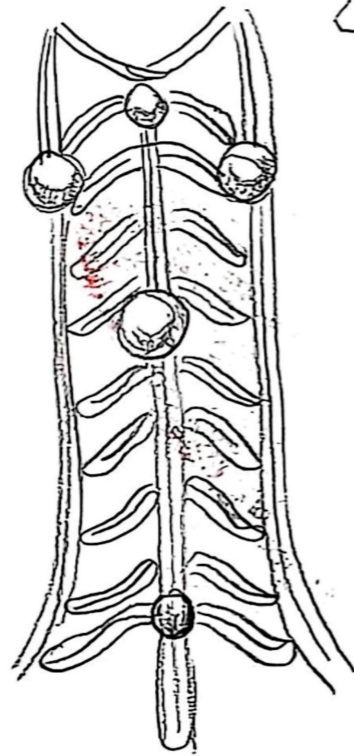


Spirit therapy
Sometimes shaman
tell their patient
that they must adopt
the manner clothes
or life styles of the
opposite sex to get well

→ Soft-man
they braid
their hair
in the middle
let it fall
loose during
their ceremony.



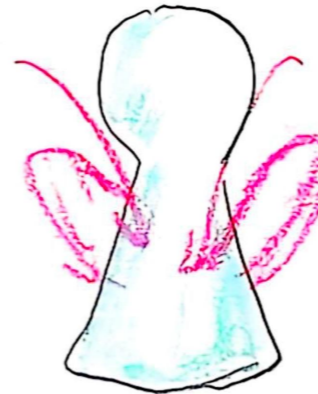
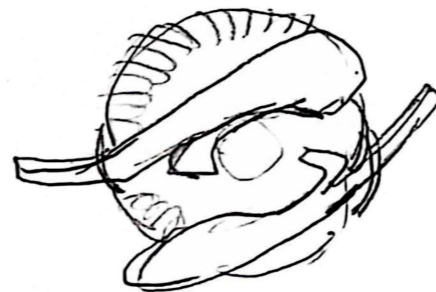
"woman is by
nature a shaman"



A girl's jacket made of foal's hide



Yakut shamans
have two iron circles
representing breasts on their coats



PUNK

Sex pistols
vivienne westwood.
Glam rock.

Punk culture originated in the 1970s in both the UK and the USA as a response to economic difficulties, social injustices, and the mainstream culture of the time. It prompted young people to express their dissatisfaction, emphasized rebellion and individual freedom.



Harajuku fashion

A movement of protest against the strict rules of Japanese.



Cosplay fashion
dressing up as a manga / anime / game / sci-fi character
embodying the character

Lolita (sweet)

Lolita (gothic)



HIPPY 60's
waves, flares
drapes, peace and love

PUNK 70's
super tight jeans
sweat and anger
leather jackets, ripped tees



Harajuku fashion emerged in the 1980s, inspired from various sources such as punk, rockabilly, and cosplay. The neighborhood's iconic street, Takeshita street, became the hub for fashion-toward youth to express their individuality and creativity. What started as a rebellion against mainstream fashion evolved into a unique and avant-garde movement that transcended boundaries.

Originally, the trend was to mix traditional Japanese clothes with modern western clothes.

Inspired by 17th century Rococo and Baroque movements.

This elegant and refined in a 'soft' protest movement against the strict rules of society in the late 1970s



Glam Rock

emerged in the early 1970s in the UK
Dramatic, visual style
flashy costumes, bold makeup and elaborate stage shows.

David Bowie → his character Ziggy Stardust (a gender fluid image)



Sci-fi stage setups

shiny clothes
sequin decorated outfits
extravagant accessories.

mixes masculine and feminine elements.



Cultural
expression
and
attitude

(Identity
exploration)

visual kei (Japanese)

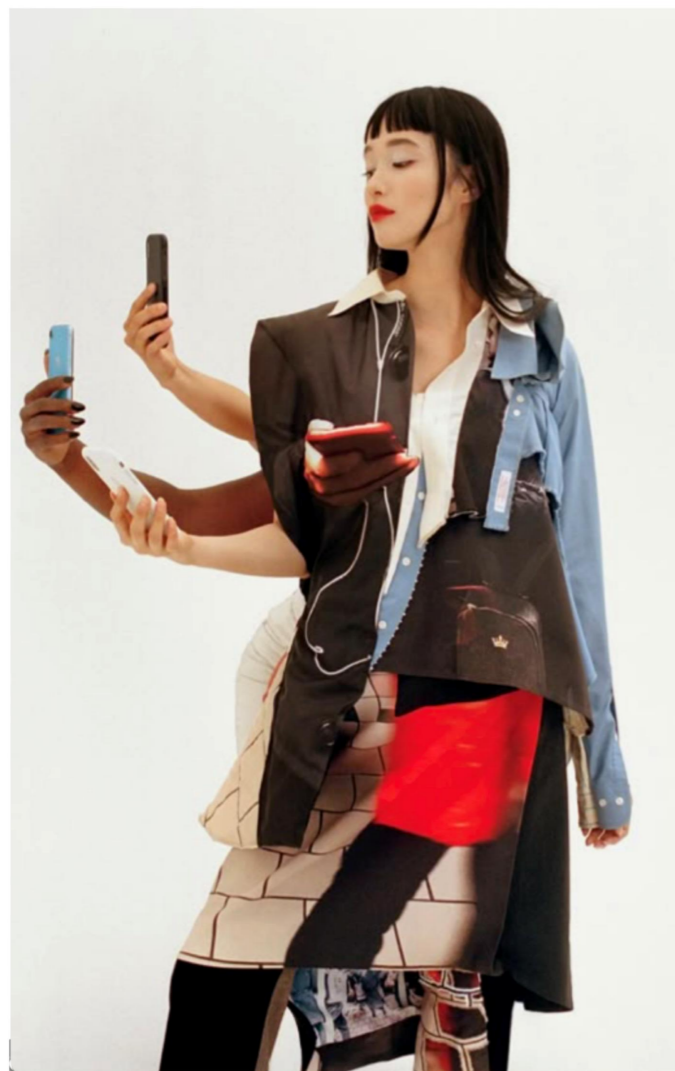


(X Japan band)

→ It has profoundly influenced later musicians and cultural trends particularly in visual expression and stage performance innovation.







Discussions of natural reproduction

Body representation, gender roles, and autonomy.

The inspiration concept of Two-Spirit involves gender-fluidity often symbolized by conch shells and flowing water in the rituals

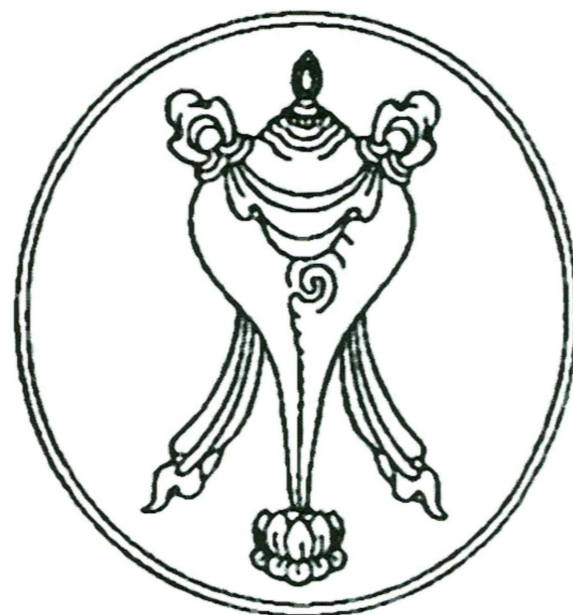
Water is used for baptism or purification helping individuals break free from past identities and embrace new roles.



The spiral structure of the conch represents the cycle of life, the journey of the soul, and the fluidity of gender symbolizing a return to one's essence and infinite possibilities.



In Hinduism, the conch is often associated with Vishnu, one of the principal deities.





Conch shell meanings

- ① Power and Authority.
- ② communication
- ③ protection and Good Fortune
- ④ Spirituality and Divinity
- ⑤ Fertility cults, sexually suggestive

刺球骨螺
Hexaplex radiis ((Gmelin, 1791))



Body Representation & Gender identity expression
Gender expression like the growth of a shell
is both a biological instinct and a conscious construction.

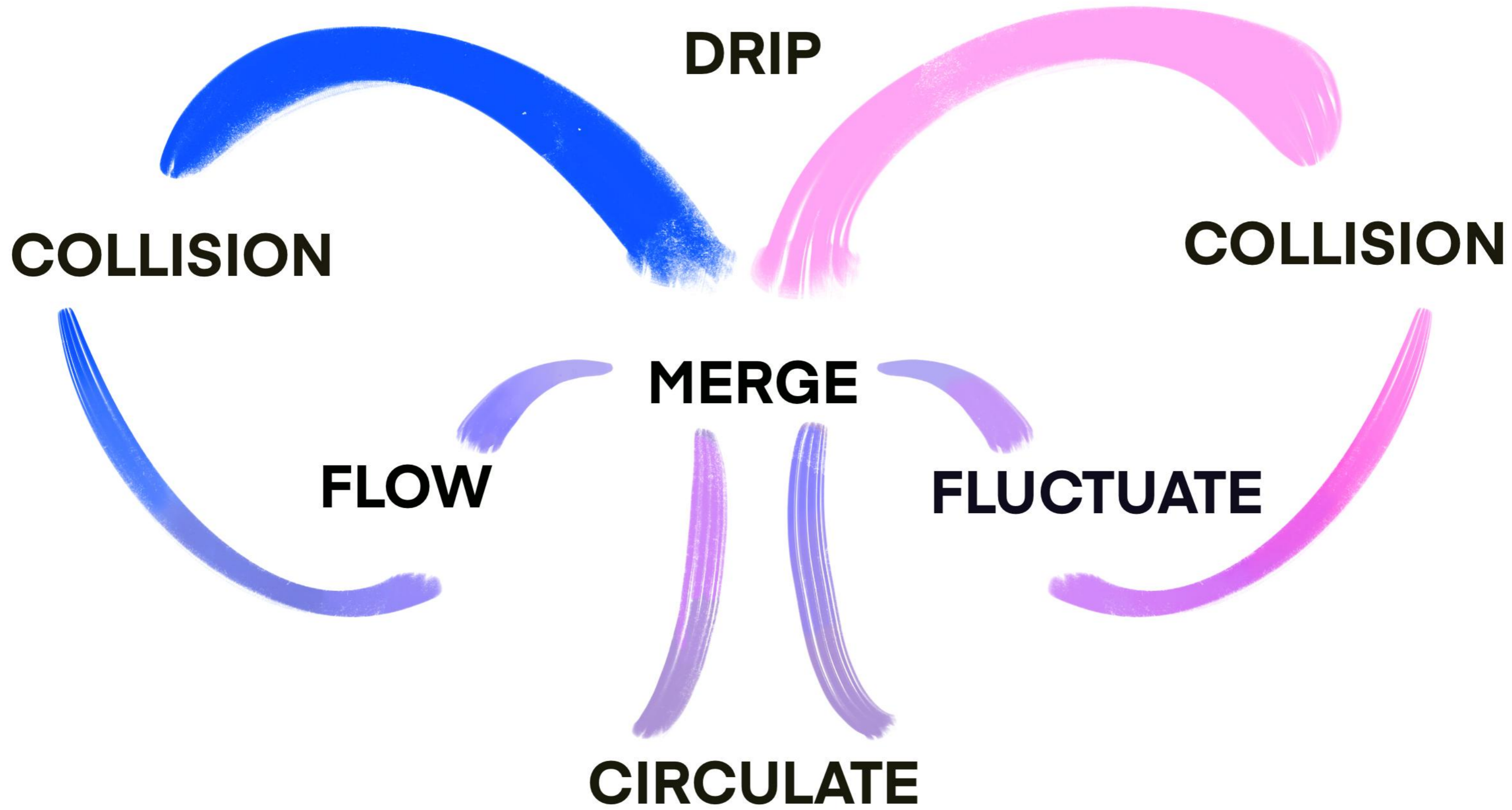
Most gastropods (including conches) are hermaphroditic, but their reproductive methods vary:

Simultaneous hermaphrodites: Some species (e.g., freshwater snails) possess both ovaries and testes, capable of self-fertilization.

Sequential hermaphrodites: Some species (e.g., abalones) transition from male to female as they mature.

In Maori mythology, the gender ambiguity of marine life symbolizes a primordial state before the world was divided, while the spiral form of the conch represents solidified chaotic energy.

Ripples, whirlpools, conch shells
(spiral, the contrast of soft curves
and sharp angles)



Earrings

Flow

Bracelet

Fluctuate

Nail ring

collision

Ring

merge

Eyewear

collision

Necklace

circulate