

Notes on Deception and Religion

Shadows of Reality

Source of healing,



Thee difference
In the impact
between the three-
dimensional and flat image
is considerable. But
consider the intent - one is for
healing, one is to mourn for
the dead yet is in reaching
spiritual energy is exuded
from the body of a medium
However, it is used
Captured through photography
in close-up as well it
does cause credible

These are ink marks of undried images. Multiple
unrelated photographs are combined. Could this
be messing up
soul printed




the subjects? If not saved
acknowledged, does it matter?
"Ignorance is a bliss"




resembles
a face
ectoplasm.

Haunted by the Gods, 2003
Magic: Stage Illusions, Special Effects and
Trick Photography compiled, Albert Hopkins, 1926


The "Talking Dog" are reflected and layered together.
In a way, the dog is engaging in a conversation by being reproduced
or endless times. However, it's not done with the subject's acknowledgement.



Then does it
have such of a
significance to
its counterpart -
the photos?



Is technology
informing / informed by throughout the production
of these images in any kind of way?



Mimesis and Alchemy, 1993
Magic: Stage Illusions, Special Effects and
Trick Photography, 1926

What will you take?
holding hands in
a séance.

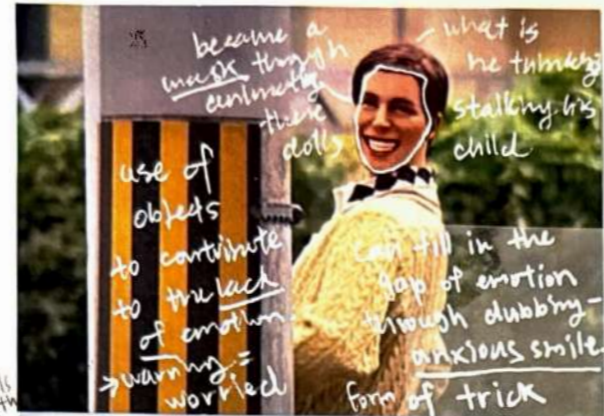
WHAT IS REAL



Laura - looks naive and angelic

"Mikey! Mikey!"

fake close-up of its face - gives life to the doll



became a mask through the use of objects to contribute to the lack of emotion - warning = worried
what is he thinking? stalking his child
can't fill in the gap of emotion through dubbing - anxious smile
form of trick

The Fuccous by Yoshimasa Ishibashi, 2002



MIMESIS AND ATTENTY



Have I question why Voodoo is seen in a beautiful lens perhaps of its strong tie. seems the primitive but it is a source of healing
Did the development of technology and medicine

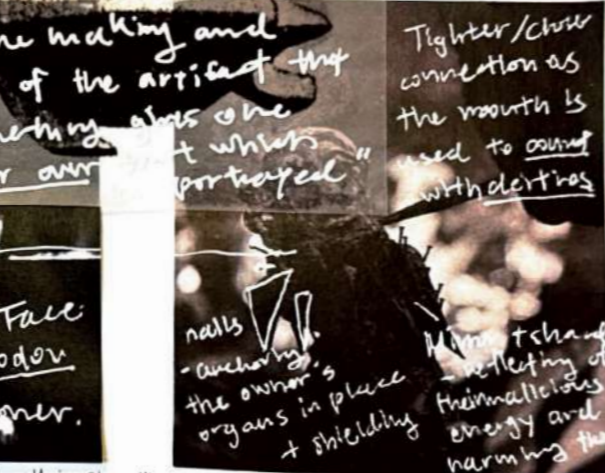
In literal contrast, make



Typical western depiction of a doll



The stark contrast between Btw makes others look like a dead doll!
"the making and existence of the artifact that produces something else one horror over it which is portrayed"



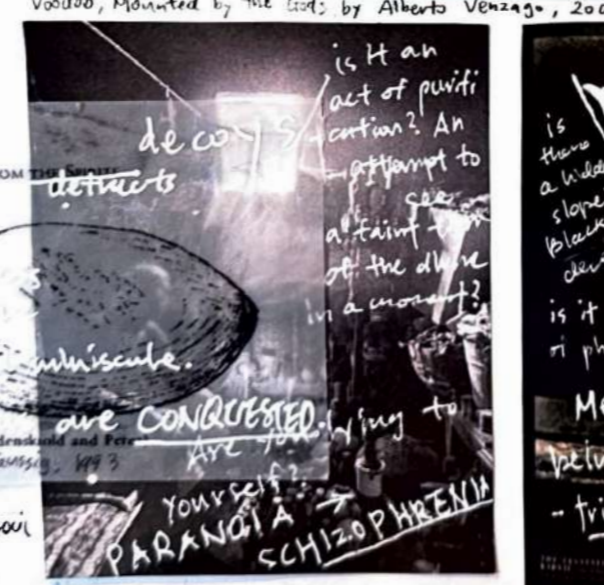
Tighter/closer connection as the mouth is used to connect with deities
Face of Vodou Practitioner.
nails - anchoring the owner's organs in place + shielding
Mimesis and attenty - collecting of their malicious energy and harming the



All roads lead to GOD".
is! All religion has a connection to
or a deity mother with twins... because of the...
to the other

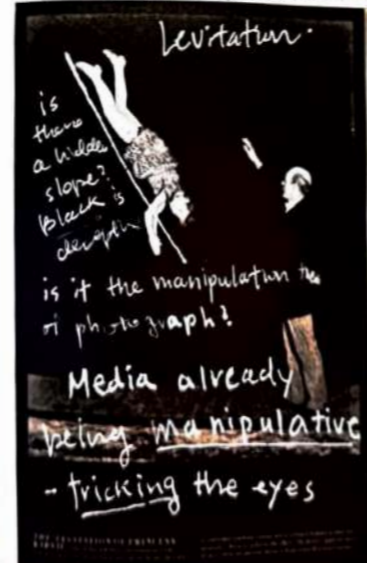


For...
fuzz
is it a purp...
invisible...
high...
the spirit...
the expressed by



Voodoo, Mounted by the Gods by Alberto Venzago, 2001
is it an act of purification? An attempt to see...
deconstructs
detracts
is it the manipulation in a photograph?
Media already being manipulative - tricking the eyes
PARANOID SCHIZOPHRENIA
yourself?

Magic: Stage Illusions... Photography by Albert A. Hopkins, 1996



Levitatur...
is there a wide slope? black is...
Media already being manipulative - tricking the eyes



Twins - replicas of each other.
I can see your lips moving - the history and art of ventriloquism



Shell-intricacies from the place of birth
"Blood is thicker than puppet for ventriloquism"

Valentine fox
valley - exaggeration of all facial features - and be done to dilute noise from human body?

Half-baked human - makes it creepy.

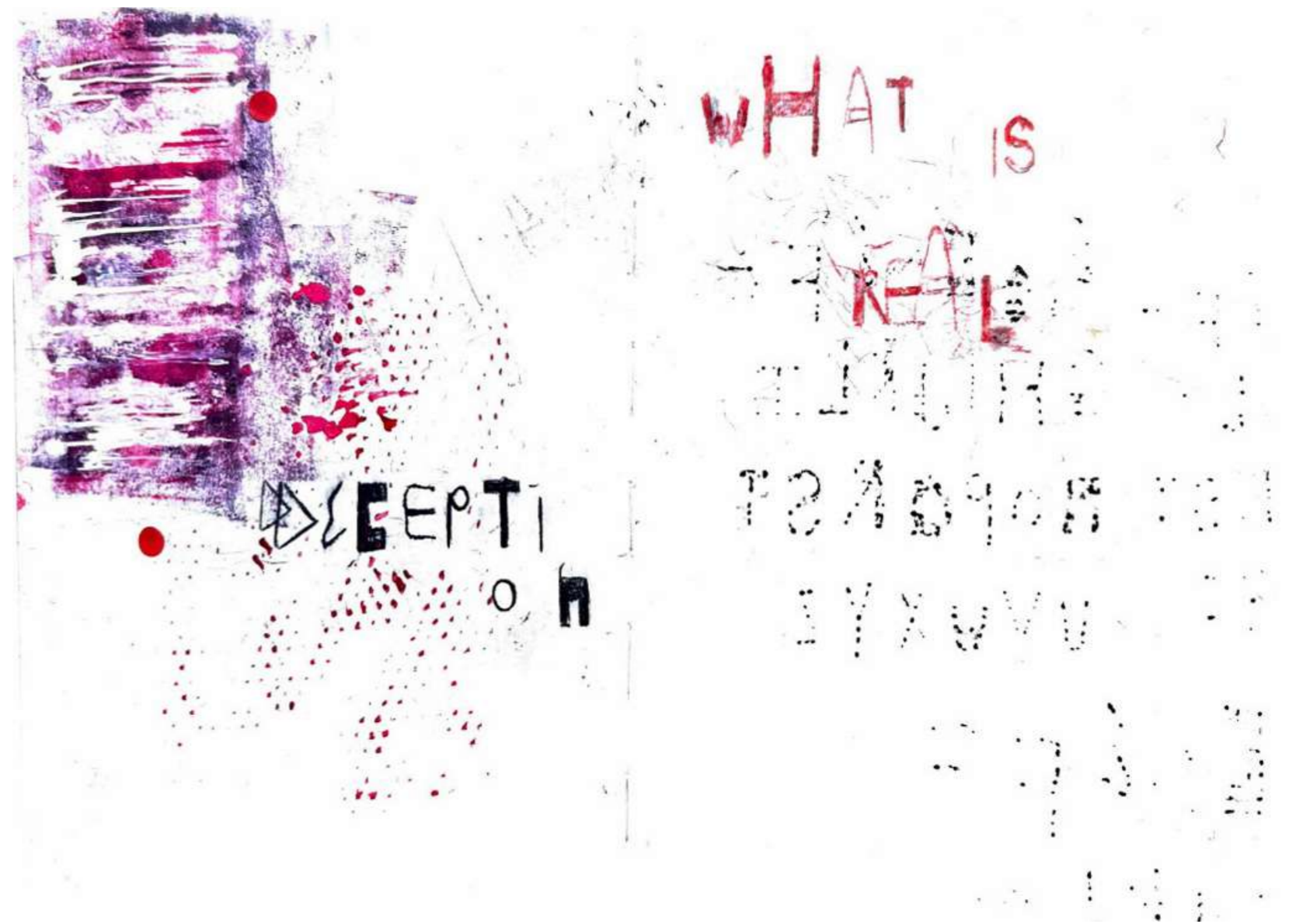


Deony surles (Gwen Hardwick) and Peter Mimesis and Attenty by Michael Janssen, 1993

gives the illusion of the doll having a spirit, associated with satanic activities.

A B C D E F
 G H I J K L M
 N O P Q R S T
 U V W X Y Z

Shadows of Reality



WHAT IS REAL

My Rendition of
Minnesis and Altevity, 2023

another reproduction
of the talking dog
through
block printing.
The stencil
hasn't adhered
to the paper



Does it get increasingly
difficult to reproduce images?

My Rendition of
Minnesis and Altevity, 2023



What is deception and how
does it relate to fetishes, religion, replicas?
Are the believers being deceived? Replicas may be considered
untruthful to the original... These with faith are helplessly since
they attribute often fearful meanings to them, but what
does it look like in an outsider's perspective? Me?





Print Experimentations
of Mounted By God

Very faint print of the talking doll due to
the residue of the previous users.

So in an way an element
of themselves are taken and
layered... What is the
affect on the image



In the reality
She knows, something
terrible will happen to her
if she ever forgets or
lose the doll.

So it is a visualisation of
her worst fears as

she believes this
idea of corrupting/
manipulating the original "The doll has to do everything she does,"
will diminish
its value destruction

→ eventual intimate, closer to skin. The juxtaposition between
soul-sucking reproductions and the soul-containing vessels, the fetishes

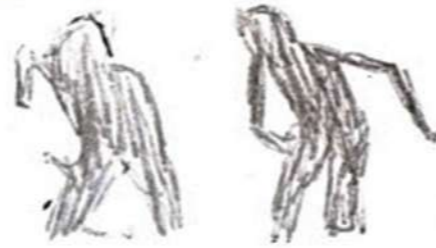
Mounted by the Gods; 2025

down it
gathers into
denser circles

as

Research of
Voodoo Culture

Shadows of Reality

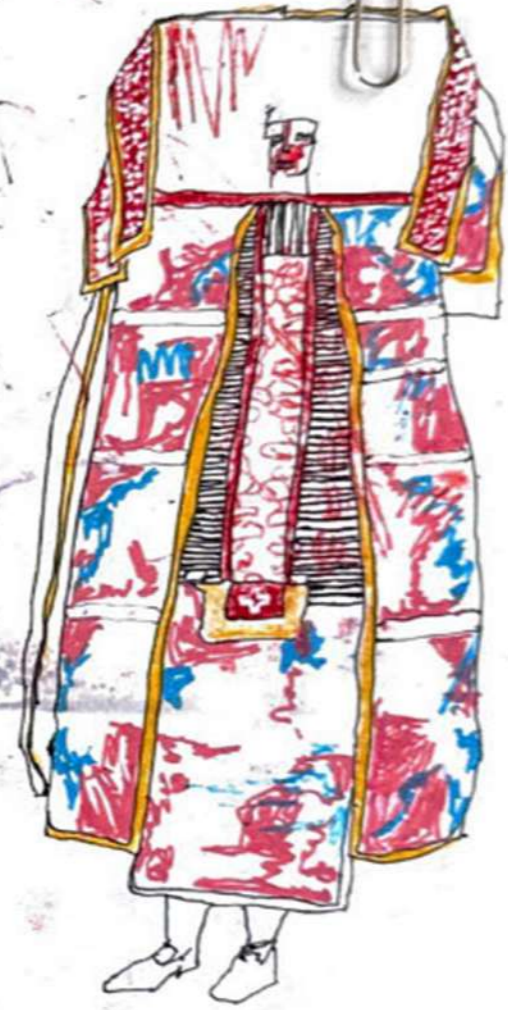


It's the shadows - they are deceptions
in and of itself. Shadows swallow, distort, enlarge.

Hunted by the Gods, 2023

Behind all the extravaganzas
lies a desperate need to grasp
the fleeting innocence.

Bruno Cattani's "Voodoo"
"These are portraits that
show the soul of each
subject and somehow
guard
their
spirituality."



My Rendition of
Voodoo - Bruno Cattani, 2025

Research on Plato's Allegory of the cave



Shadows of Reality

IN ONE SENSE all shadows are in the mind. What we see as shadows are what the brain constructs when it receives signals of variations in degrees of light from the eyes. But there is also a psychological response to shadows, most powerful in relation to the cast shadow because of its ability to reproduce the form of the object in darkened and distorted form (e.g. see *Book of Shadows* by Gwen Ravens, below).

Probably the most important association in early societies was that between a person's shadow and their soul. In his celebratory anthropological study, *The Golden Bough*, Sir James Frazer recorded many instances from Egypt and China of this association. In China it was the fear that your soul would be snatched from the coffin at a funeral that led to the custom of keeping one's shadow by stabbing his shadow.

PERSONAL

EGO

SELF

INNER WORLD

Above: The Jungian picture of the human psyche, which requires a fully integrated shadow for a healthy self. Below and facing page: Popular cartoons expressing in various ways the shadow operates in human nature.

ONE DOES NOT become enlightened by unlearning figures of light, but by making the darkness conscious.

2. Running from the Shadow

Who who believe in it... being to... a red... a ver... may be... be snatched.

SHADOW OF HIS FORMER SHELF

to represent progress... supposed to solve all... supposed to be improving. Technology was supposed to solve all our problems. The cover of the March 2006 issue of the *Atlantic* magazine of a famous university boldly asked, 'Can We Know Everything?' This strange combination of arrogance and naivety is not atypical of physicalist academics. Once such untenable fantasies are removed, we can perceive values in some alternative lives that have been rejected. Perhaps syncretic, intuitive thought is as valuable as analytic thought. Perhaps pantheism can help us understand the magic contained in the world around us. Magic and science are not so loosely linked.

Book: All About Shadows, o.c.d.

The allegory reflect the humanity's inclination to seek shelter in ideologies to eliminate the fear of unknown, even if it is a false reality. The contrast between reality versus our interpretation of it is mediated through the casting of magnified shadows, performed by the puppeteers, making them absolute gods to the prisoners, controlling their perception of reality.

public religion may perform a harvest, procure peace, or secure war. So long as these acts are performed privately for the benefit of society they are antisocial. In some cases, for example, distinctions are not clear, but usually between public, religious sorcery on the one and outlawing the other. The effects of sorcery can be... Sorcery was... which are the general characteristics of a religion to society. One of the most important aspects of some religions is the belief in magic. The most common form of magic is the casting of spells. The casting of spells is a form of magic that is used to influence the world around us. It is a form of magic that is used to influence the world around us. It is a form of magic that is used to influence the world around us.

Plato's Cave

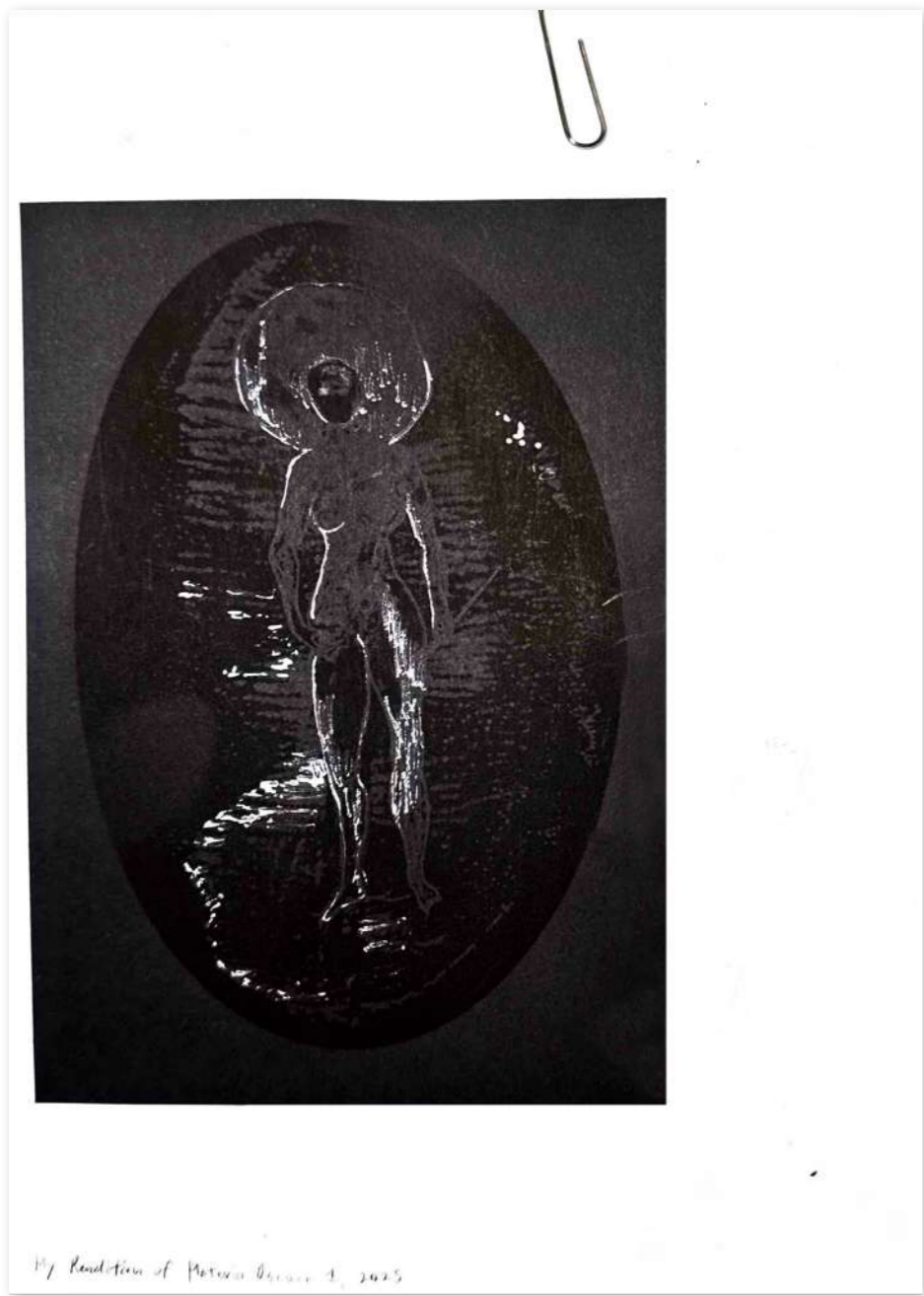
Steal me & man suffer the dreadful Karima's attack! Is belief forced upon us in this way? Are you manifesting subconsciously? Fear.

Book: All About Shadows, o.c.d.

The allegory reflect the humanity's inclination to seek shelter in ideologies to eliminate the fear of unknown, even if it is a false reality. The contrast between reality versus our interpretation of it is mediated through the casting of magnified shadows, performed by the puppeteers, making them absolute gods to the prisoners, controlling their perception of reality.

Research of Shadows

Shadows of Reality



WHAT IS REAL





Both masked figures are integral components of maintaining the constructed reality... Both will be taking elements of the archetypes explored previously, with the shadow being the mimesis of the viewer, the two are bound by an inevitable bond, defined by both their similarities and differences.



Maske Phyllis Golewsko, n.d.

2 types of masks:

- ① Sculptural mask that resembles the face of a human but represents a higher entity
- ② Form-fitting fabric masks that hides the identity of the wearer.



Book All About Shadows, n.d.

PSYCHOLOGY
Freud, Jung and shadow as archetype

Since the late 19th century, psychologists and psychoanalysts have engaged with traditional notions of the shadow in developing perceptions of the human psyche. Sigmund Freud, the creator of psychoanalysis, took a negative view of the shadow. It represented for him the dark unconscious urges in human beings. These were the instincts his analytical process was intended to expose and to help us control. His pupil and rival Carl Jung, however, took a more positive view. Keen to engage with traditional wisdom, he developed a notion of 'archetypes' in the human psyche, which he felt were innate and universal, part of a 'collective' unconscious. He saw the shadow as the one that engaged with the primal aspects of humanity, in particular sex and life instincts. It thus represented wildness, chaos and the unknown. Often it manifested itself to people in dreams, taking the form of an adversary, monster or wild animal.

Universal symbols seen in cultural practices
Opposing to humanity's fear of the unknown



Above: Carl Jung famously argued: "How can I be substantial if I do not cast a shadow? I must have a dark side if I am to be whole." Too many people, he said, deny the power of their shadows, which is a vital force and important source of creativity. This is very similar to the ancient Chinese concept of 'Yin and Yang' where light and dark are the mirror opposites of each other, intertwined, interdependent and balancing each other.

Book All About Shadows, n.d.

duality of shadow can be portrayed in the photograph - perpetrator in control of the number of the community. They are like yin and yang together to form a whole in which is a set of constructed reality.

The Cave: An Adaptation of Plato's Allegory in Clay by Bullhead Entertainment



His voice is a distorted echo, and his body is a grotesque shadow...

This is the dynamics between the deceiver and the viewer.

The so-called belief is enigmatic. It depends on how they believe perceives the shadow. As fear consumes the believer, do they see the shadow as a powerful and malicious entity?

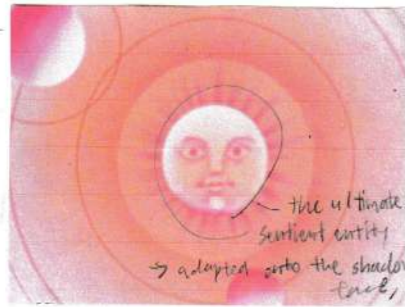


This of course does not make the World outside of the cave any less real...



- he had to be forced by an external force, so in an community where the people intentionally isolate & prison themselves, they wouldn't be able to escape. ... and suppose once more that he is reluctantly dragged up a steep and rugged ascent and held fast until he is forced into the presence of Sun himself, he will not be able to see anything at all what we now call realities.

once one realizes that everything comes from the Sun, nothing is learned anymore. It all starts at the beginning after consuming the red pill.



the ultimate sentient entity -> adapted onto the shadow's face.



resisting - again the ambiguity, is the Believer enchanted by a higher entity or resisting to take in the reality yet incompletely absorbing it.



Kneeling position - hiding away from the Sun but completely exposed to extent for the face, specifically the eyes. Could be posed to depict the believer as being possessed / breaking free from its eggshell. The cave: a parable told by Orson Welles

is the sun - source of light & shadow. It is represented through the mouth which has exaggerated human features.



Deceiver

Believer



Is the prisoner in outlawing by refusing to believe anything other than the shadow.

in possession of the object.

confidence, posture, demanding?



... and ... slightly misperceived around the body to convey vulnerability + contrast with the imposing, brightly litly.

Facing each other?

The object should recognize the guilty figure exists in order to be possessed by the unbalanced belief.



Idea Development and Styling Planning

Shadows of Reality



He was heavily influenced by his childhood, especially in his years in Sierra Leone.

"There were no fashion magazines telling you what to wear... The most stylish people live in parts of the world where there is no one telling them what is hot or trendy."

Inspired by how children in Africa would combine what they already know with Chinese/European style and produce a new subculture, B similarly creates his own characters by "taking things relatable in reality and exaggerates them through fantasy".

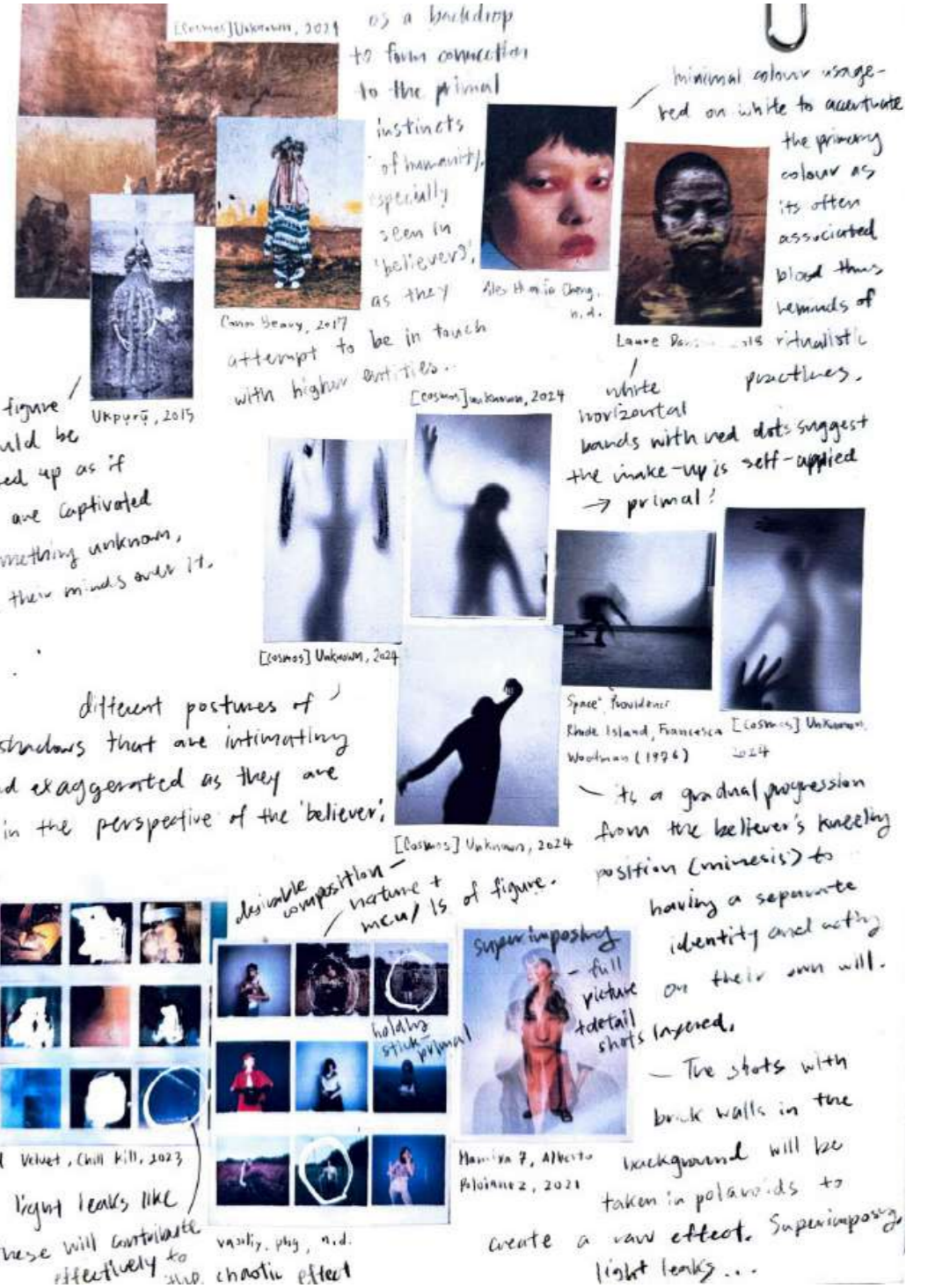
"It might never happen in the real world, but seeing it visualized in a photo has a potential to spark change."

Should consider the balance depending on where to emphasize. Probably top-heavy to focus on the idea of perception as that is largely what-forms ideology.

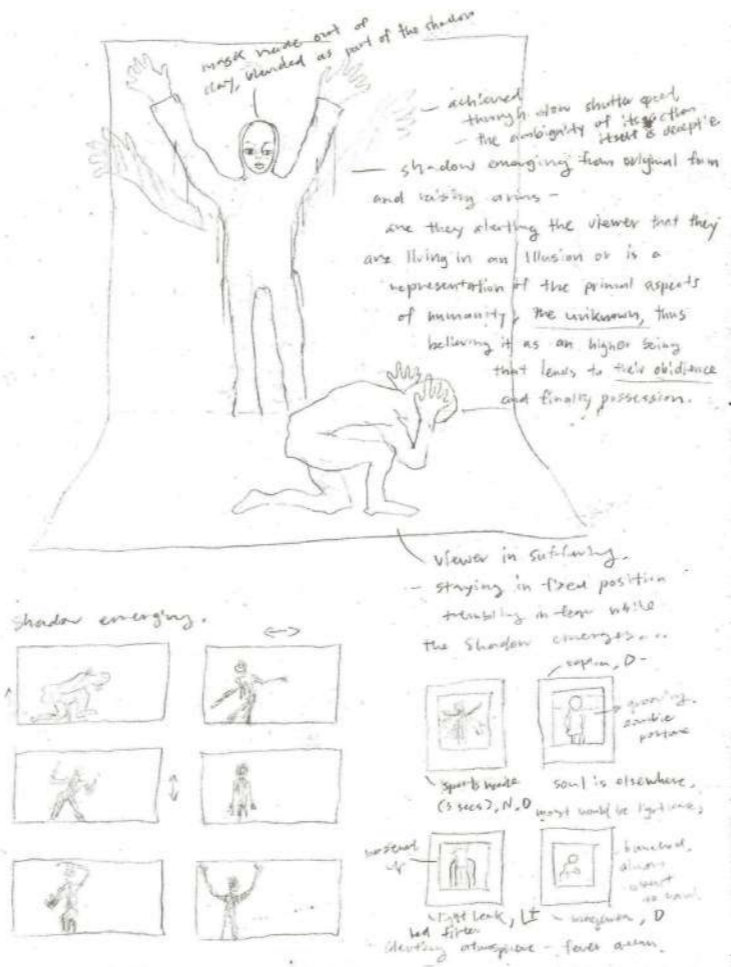


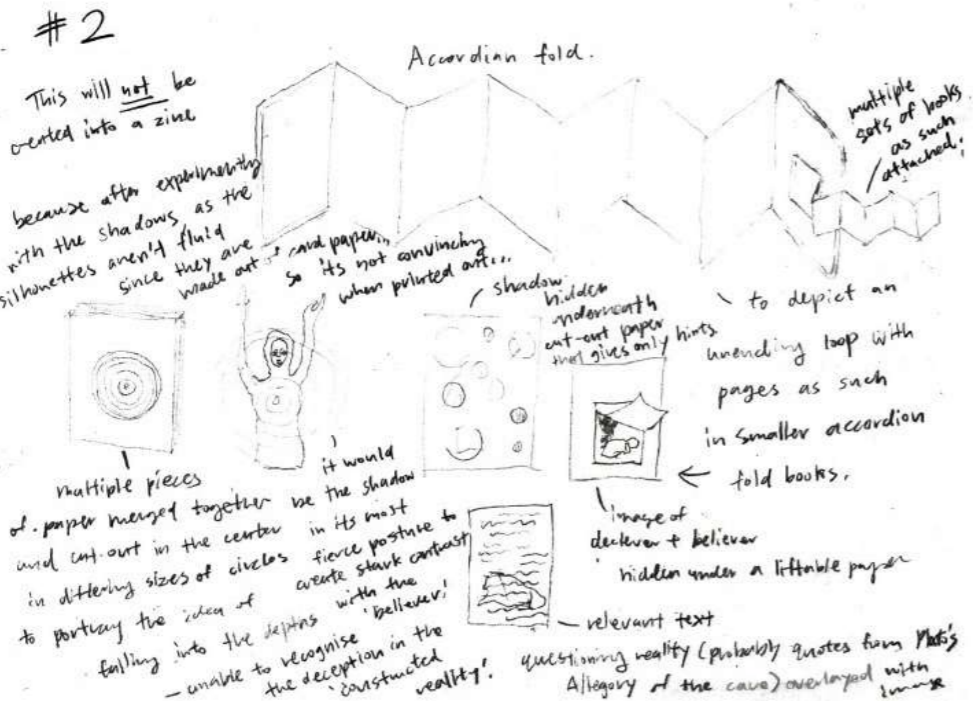
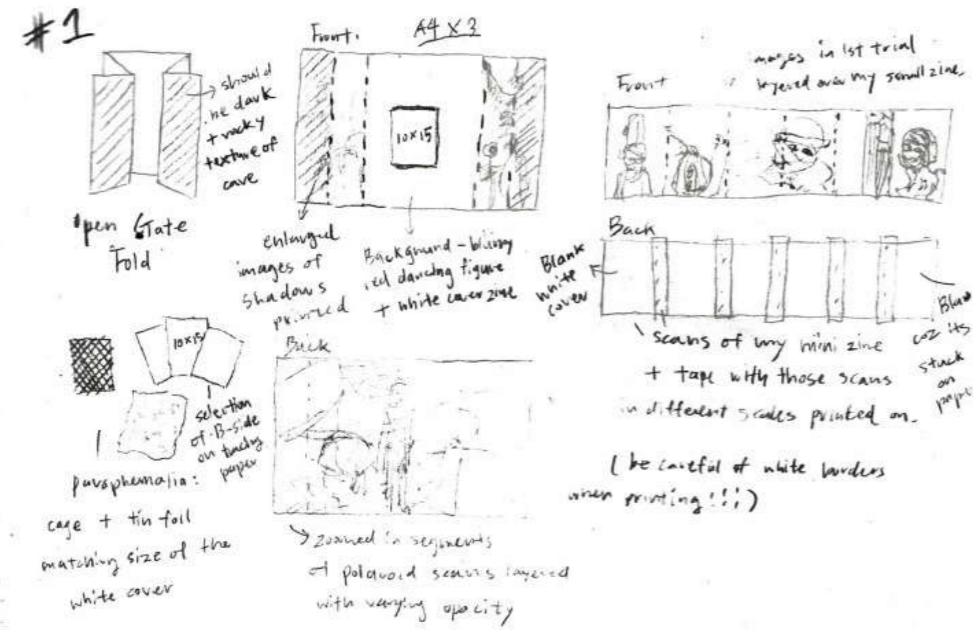
Analyzing B's creative process, I want to adopt his way of taking ordinary items and manipulating their form to produce an unconventional, new look that is off-putting yet captivating. In this way, my work can prompt the viewers to question how real is the reality they choose to live in and give them a chance to take the red pill...

Photographs by Pauls Rivers, styling and illustrations by Ibrahim Karama, 2017



WHAT IS REAL





Zine Content



Shadows of Reality



Photography, Styling,
Lighting, and
Editing: Iris Seo

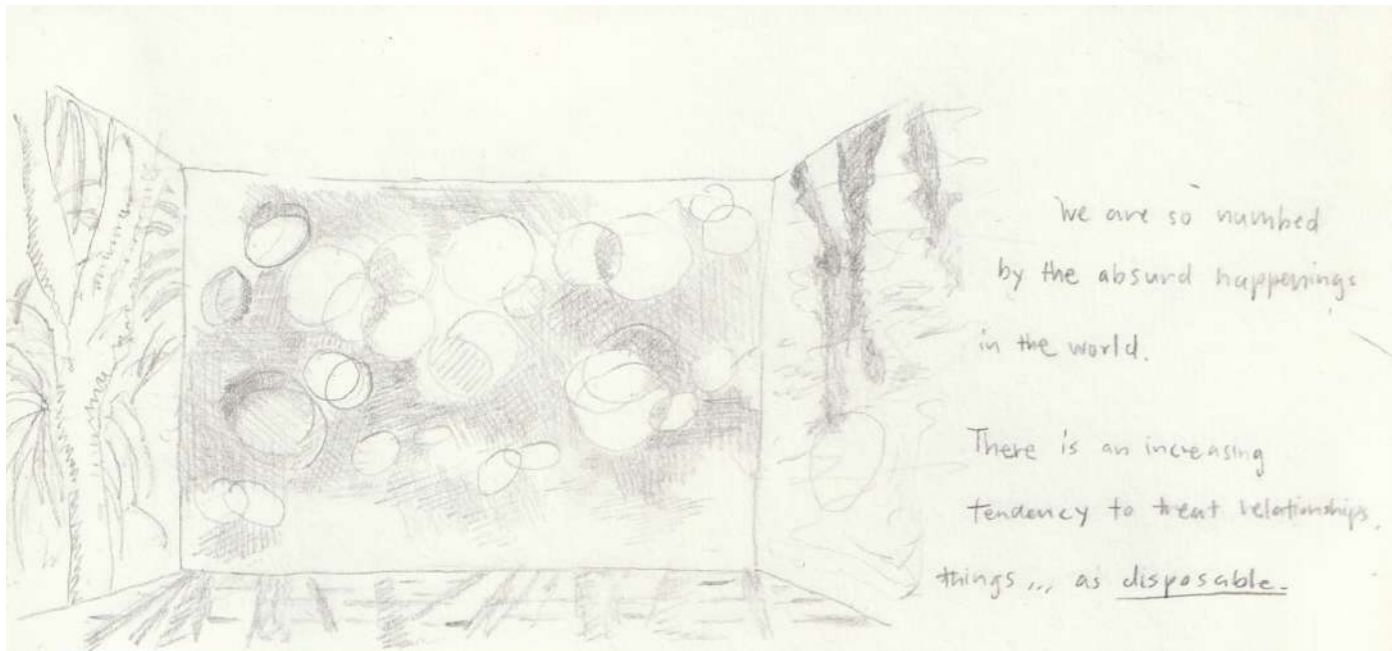
Make-up, Wardrobe and
Model: Anika Wessels

This zine explores the cyclical nature of belief through ritual. The accordion fold reflects repetition, while red acetate confronts the viewer as a metaphorical red pill, exposing the comforts of self-made illusions.



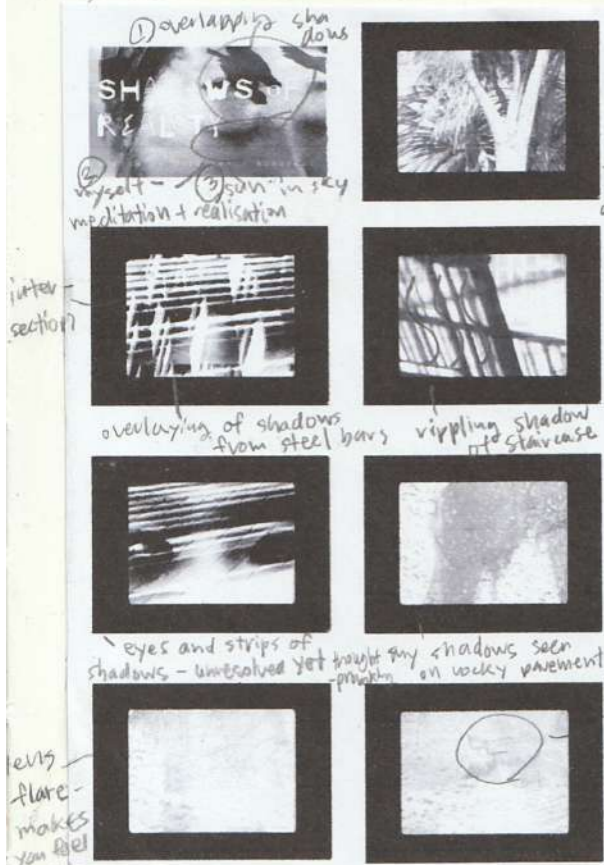
[Zine Showcase](#)





We are so numbed
by the absurd happenings
in the world.

There is an increasing
tendency to treat relationships,
things ... as disposable.



There is a lack of scarcity thus
less value in each decisions/purchases
we make. We are so mindless. Our
World is so fragmented. Friendships are
transactional, materialism is dictating
our society. It's time we realise
the mind-numbing techniques used on
us by hegemony. There's always a
greater scheme, greater force beyond,
controlling us. So just for a moment, don't
be afraid, and stop to appreciate little things
a solitary around us. Enjoy boredom, make time to be
in the present and value things that seem
insignificant, trifle, useless in this hyper-
efficient society.

My Short Film, 2025
"Our planet is a lonely speck in the great enveloping
cosmic dark, ... It has been said that astronomy is a humbling
and character-building experience. ... To me, it underscores our
responsibility to deal more kindly with one another, and
to preserve and cherish the pale blue dot"
- Carl Sagan, Pale Blue Dot, 1994

Experimentation and Visual Research of Shadows

Inspired by Žižek's idea that belief shapes lived experience,
this project explores how light and shadow create a sense of
grounding in the realities we choose to live in.

La Jetée by Chris Marker, 1962

- a powerful motif that repeatedly appears, creating and controlling the illusory world they live in. It's all about tricking the eyes - our perceptions.

- Chrono photography - sequential layering of still images of the face.

What effect does this create? What if I deliberately remove segments of the sequence. The hegemony depicted in this film can potentially enforce censorship and shape our perception of reality.

- Blurred background (B) broken effect. It suggests the fluid nature of time, where the prisoner's focus on the present moment blurs everything else - time as a social construct is dissolved.

- juxtaposition of sharply focused images of black trees against an empty, almost ghostly sky.

ghostly imprints

White Bird (Bright Red) by Jan Barth, 2002

These two seem like a part of cinematic slides of someone's dream → breaking the 4th walls.

The muted purple tinge with glimpses of warm tones like yellow casts a optical dreamy tone over the images.

... viewer is delivered to a subjective reality, at once familiar and unknown. Have the sensual effects of light extend beyond the purely visual, adding on the emotional sequence.

the intersection remains the dynamic composition nearly abstract

focus directly like the stream of consciousness

Suggests one's fleeting moments

very smooth - stream is unrecognizable

nostalgic - the blurry vision makes this sequential scene universal. A home we never been to.

we may portray themselves as 'deciders'?

... shadow close-up to the wall...
... deceptive...
... better enjoys instead of...
... shadows are real?

White Wind (Bright red), (Untitled 02,5) by Uta Barth, 2002

... body has been annihilated

light leak - sensory completely consumed by light

explosions

light leak - sensory completely consumed by light

the significance in the contrast between these two? left looks more delicate, like things of thread

Pointing in the sky while the light is definitely a tree.

the space of light clearly divides the space up into two.

As light and shadow are dependent on each other, deception relies on some form of reality opening to us.

the gradient spread of light below suggests the tension between light and shadow - shadow may light selectively reaches → what we see is exploded, its not the full picture

is it a revelation? Is it an entry or an exit to the deceptive reality?

only the silhouette of the airplane is seen.

This makes me wonder if this is just a shadowplay? a scale model behind a white screen. The bill to make this excessive deceptive.

still image of the person's dynamic pose - slightly shaking due to some motion in the bars of the screen.

The Truman Show by Peter Weir, 1998

... we live in way be false

door

What significance does it have → movement into another dimension ... what is behind the set?

Contrast between restriction/infinite space

a lack of depth cues. Could be in a narrow dislocation of self - we are grounded in the vastness

Crater's Eye

East Portal

illusory space where there is an exit the end of the world - this may not be far from this world we are living in.

are forced to see one perspective of the sky → it doesn't feel claustrophobic but actually calming as the opening feels like a small portal to something greater - it is a gentle kind of transcendence.

sensory-deprived space

what could it be projecting? Maybe its not meant to project...

the insignificance of ourselves in the universe reminds us about compressions.

of dot which inhabits? billion creatures called humans could be the beginning / ending scene? - a venue for screaming runway shows (vogueing) inventing

we just programmed codes that believe we are humans

in the world? Are we even part of an universe? Are we just programmed codes that believe we are humans?

Room to Breathe by Pixel Artworks, 2022

billowing clouds, calm skies and the sun, expand and contract

Internet London, unknown artist, n.d.

people gather around the venue - it strengthens the sense of community.

like a ribcage - hanging them in air, it becomes a quiet contemplation of these things in the air as they have some life to them - you don't know if they are reconstructing or being destroyed. Just in the middle.

Dark Matter: An Exploded View by Cornelia Parker, 1991

blown up and she created a 'frozen moment' by hanging the debris. Just in the middle.

more, hidden.

a micro-cosmos of a particular world.

Research on Shadows and Space

Experimentation of Shadows



overlays of lines
and circles,

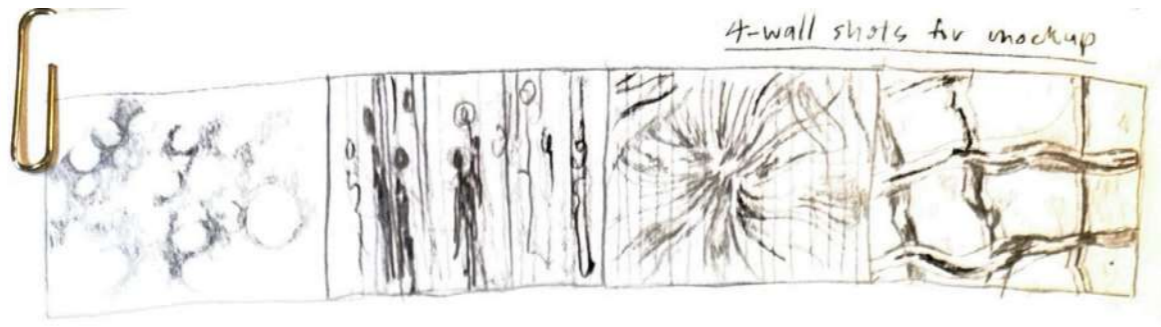
green and blue.
essence of nature.



From a magazine in FC So! Exhibition by Unknown artist, n.d.

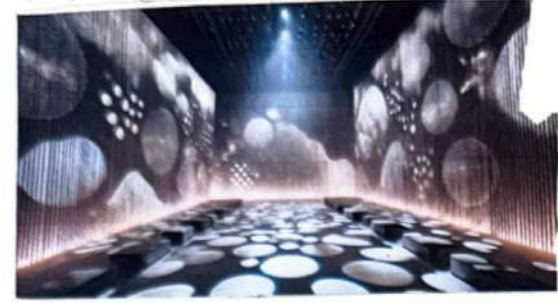
Geometric Shadows by Maiko Takeda, 2009

Planning and Storyboard Development



4-wall shots for mockup

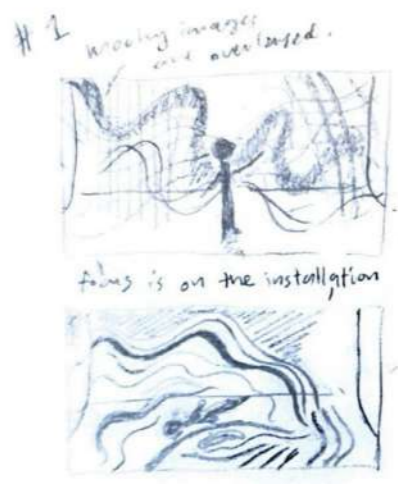
Immersive Media Installation



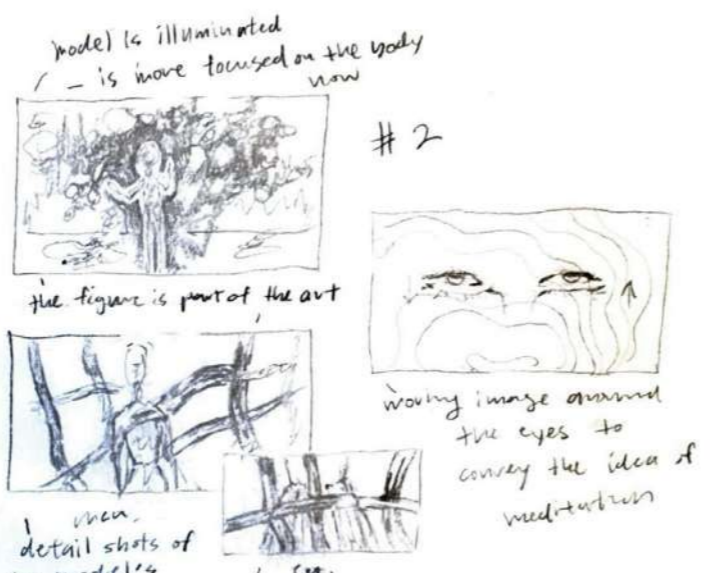
Runway Venice



All Generated Images of the digital installation mockup



Concept sketches



- Sounds!
- keep the birds chirping -
 - boiling/ cooking sound
 - sound of waves billowing
 - far-away conversations / reversed ... ?
 - > all adjusted in pitch & echoes to convey the sound of a passing layer of mist ...

Fendi SS 21 by Bureau Betak, n.d.

Screen installation as Venetian

Yes Saint Laurent FW 20 by Bureau Betak, n.d.

Rick Owens SS 2012

passing through a layer of my projected moving images... - exterior transcendental meditations?

dreamy and mystical

effect through delicate nature of soft curtains

models on runway could be spotlighted through like waving shadow images - could even be worn as clothing

Lumiere en mouvement by Jean Le Prie, 1965-1969

could be used to be immersed in it as an installation in an gallery, Audience interaction in space

After Nature by Janet Laurence, n.d.

Shadow seen on white clothing

Big Air Package by Christo, 2010

detail shots of shadows - becomes part of the dress like an ephemeral print - outline of figure is highlighted and lifted from the background to emphasize clothing for detail shot.

laying down - in relaxation, meditative existing in the moment, meditative

Lighting recipe diagrams

2-way rim lighting

Exposure setting list:

- f/16, 1/30s, ISO 3200
- f/16, 1/8s, ISO 3200

To completely eliminate the figure - emphasis on the waving shadows

To highlight the silhouette of the figure to show how it wraps the body

3 point rim lighting

projector as key light

elevation hierarchy

To create halo effect and focus on the figure to show clear intention

For overall setting, I need to use a wide aperture, a shutter speed fast enough to prevent motion blur in low-light. The camera should be an individual focus to emphasize aspects

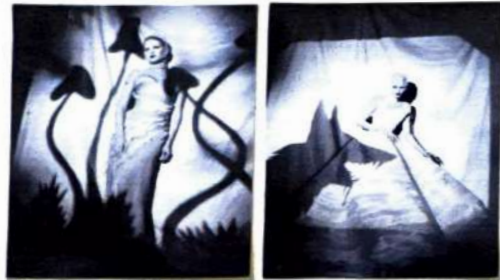
Editorial and Styling Research

Clear division into two allows audience to naturally read the whole image.
 Landscape - brings attention to both the dress and the figure → come to me as an art piece.



The Great Illusion by Paulo Roversi, 2010
 bleed over to the background

portrait images with the projections aligned with figure in center - can imagine the shadows / illuminations as prints on dress. The offset from figure to background establishes context, situating the figure in a play.



the use of curtain and the slight overlap of the shadows and the dress blends the model into the fabric, becoming part of the tapestry.



the shadow over - whelms the figure - the circular framing focuses attention towards the branch going over her chest - can simultaneously evoke emotions through particular placement of shadows...

The cold blue hue in these editorials emphasises the harsh lighting and conveys fragility - connects to my idea of the ephemeral present.



the large, sweeping shadows bridges the two pages - how can I translate this cohesion in my showcase video? Overlaying two footages with vaguely similar...



The hazy strips of light seeming to seep through the blinds create an ethereal feeling - this elusive context should be central to my video → makes viewers focus on correlating the moment of...

Projections by Mads Perch, n.d.
 diffused coloured light to evoke a particular mood
 white base light on face to emphasise the figure's presence
 illusion of wearing a suit



Model Poses/position (white dress only)



so that it highlights both the silhouette and projection.
 L'Officiel Magazine, n.d.

High Drama Vogue UK by Paulo Roversi, 2020

in 2/3 of the frame, posed like a sculpture, near the edge of the projection to let it bleed,

close-up on above neck - skin can be considered a canvas?



projection on body and different angles to emphasise its fluidity.

thus transient nature Bold Black and White Fashion S by Nick Fancher 201



Hair & Makeup [Pinterest] Kateryna Tymoshchuk, n.d.



Without bangs, faint eyebrows and pale face to act as a canvas,

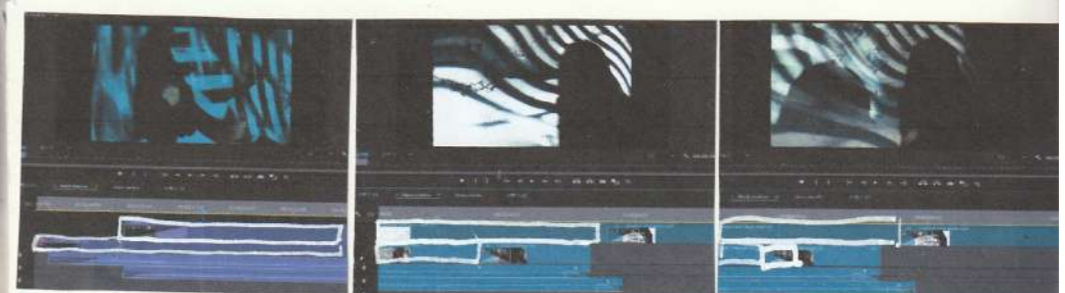
clean and set hair with minimal hair strands seen.



Flair Magazine by Benjamin Lennox, n.d.

glittery, wet-look so the face can be illuminated & recognised amid the darkness and shadows casted.

Moonlight Marie Claire Korea, 2023



I layered two videos together, applying the 'overlay' effect on the video on the top.

I extended my moving image footage by decreasing the speed to 70% and applied the 'multiply' effect on the top layer so the white is gone.

Three videos are shown together. Two videos below are joined through 'cross dissolve' with the top layer remaining 'multiplied'.



I layered the glimmering glass moving image with the face - it feels like the figure is being drawn into another realm - transcending reality.

I layered an image with video footage of figure overlaid - creates an illusion that the image is alive and in motion. An allusion to La Jette...

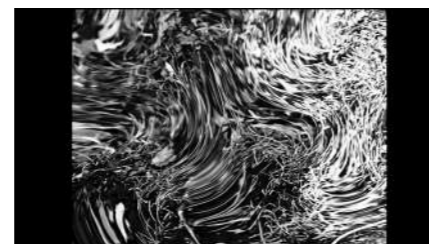
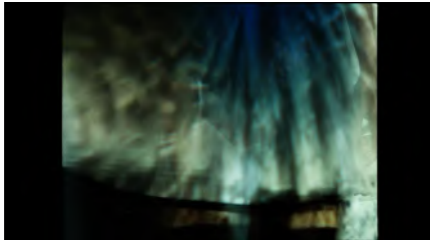
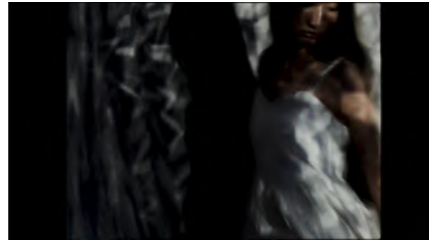
I layered figure with the same setting in different angle - seems like her mind is wandering off.

I layered a close-up footage with another footage of the figure twirling away - seems like she's imagining this moment in her head.



Removed background of the figure in set and scaled her down to fit the space with the immersive installation.

I placed multiple versions to make the space fully function - I used the 'distort' tool and blended it with the white.



As It Is



Voice in video: Caroline McCready, Iris Seo

Music composed by: Iris Seo

Photography, Styling, Make-up,
Lighting, and Editing: Iris Seo

Wardrobe and Model: Yumeko Hui

Link to videos: [Breathe In](#), [Breathe Out](#)