

A man in a light blue suit is lying on a dark blue carpeted floor. He is wearing a light blue striped shirt and a light blue suit jacket. He has white eye makeup on his eyes. He is holding a clipboard with a document that has the word "SATION" visible. There are several papers scattered around him, some of which are partially covered by a large white paper. A computer monitor is visible in the background. The overall scene suggests a state of disarray or a chaotic work environment.

**GRANDIR ENSEMBLE**

**"CROSSING BINARY"**

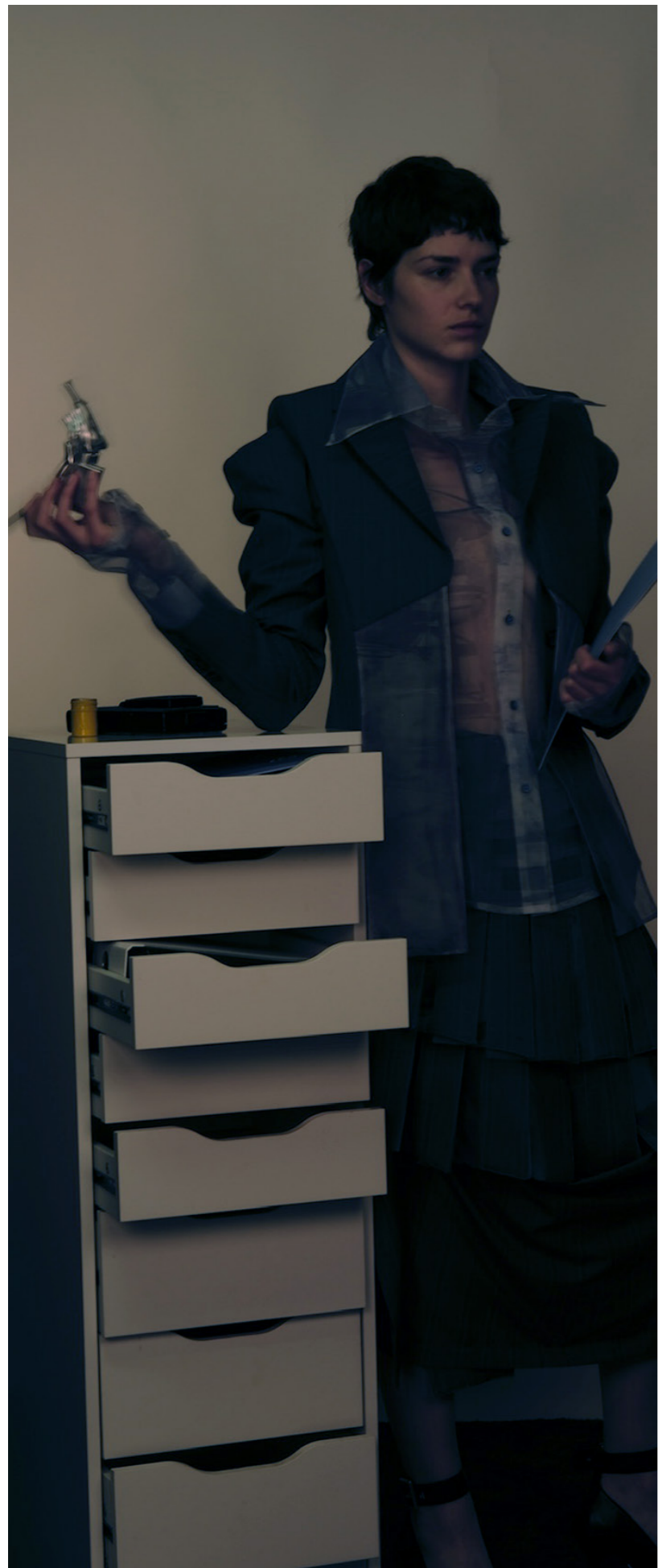
Examine the ambiguous relationship between power, gender, and obedience.





Designer & creative  
Director : Yi Zhang  
Photographer: P.lgue  
Model:Ulla  
Stylist: Sophie Zhang  
Mua: Natsutomonaga  
Hair: Masaki

Look 1



look 1 Shirt



Designer & creative Director : Yi Zhang  
Photographer: P.lgue  
Model:Ulla  
Stylist: Sophie Zhang  
Mua: Natsutomonaga  
Hair: Masaki





GRANDIR ENSEMBLE



look 2





Designer & creative Director : Yi Zhang  
Photographer: P.lgue  
Model: Ulla  
Stylist: Sophie Zhang  
Mua: Natsutomonaga  
Hair: Masaki



**GRANDIR ENSEMBLE**



look 3



Designer & creative  
Director : Yi Zhang  
Photographer: P.lgue  
Model:Ulla  
Stylist: Sophie Zhang  
Mua: Natsutomonaga  
Hair: Masaki



**GRANDIR ENSEMBLE**



Designer & creative Director  
: Yi Zhang  
Photographer: P.lgue  
Model: Ulla  
Stylist: Sophie Zhang  
Mua: Natsutomonaga  
Hair: Masaki

