

PORTFOLIO

TEERADON KANJANAPOKIN
(POM)

; THE GREY & THE SCULPTURE

Statement of Intent - Concept

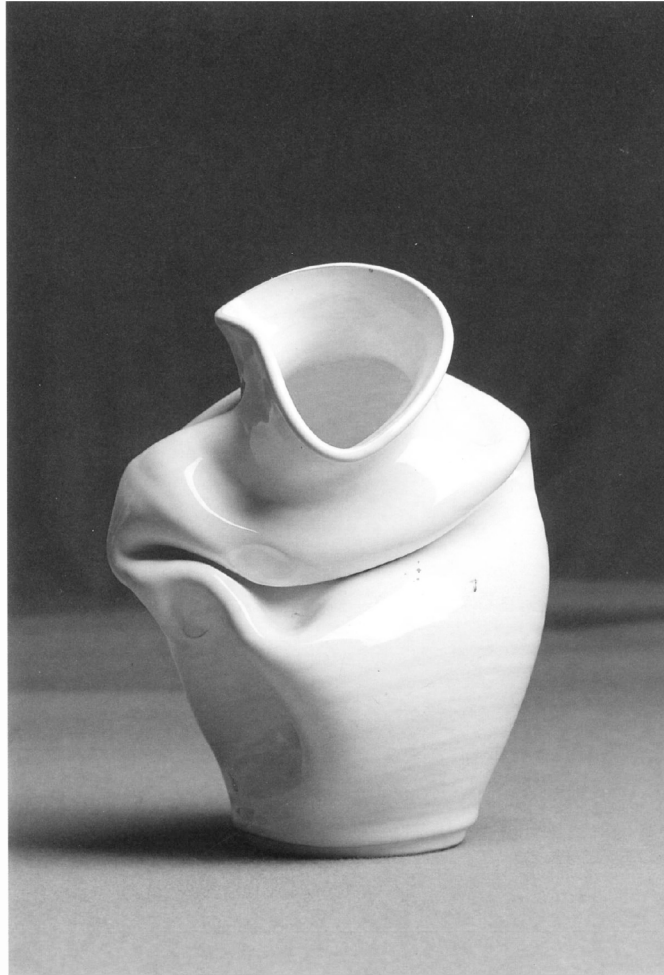
This collection is inspired from Sculpture and its imagery from artists' or authors' choices of colour and material for their work. Most sculptures, especially modern sculptures are often made on Greyscale yet some may have been made in different colour shades. Nevertheless, once it is published, for examples, a book or an online article, authors or artists tend to pick monochrome tone to filter out the colour of the artwork. There are several interesting decision behind this, which is so inspiring and would be astonishing to create a collection from their choices of colour and material.

Sculpture is a three-dimensional art form where form, shadow, and texture are critical. Black and white photography enhances these elements by removing the distraction of color, allowing the viewer to better focus on the play of light and shadow that defines the sculpture's shape and surface and sculptural expression. Sculptures often appear in grayscale (shades of grey, white, or black) for several reasons, many of which are rooted in historical, material, and aesthetic factors. Color can sometimes distract from the physical shape and volume that sculptors aim to highlight. Many modern sculptors embrace industrial or minimalist aesthetics, using concrete, steel, or other monochrome materials to highlight structure and concept. Greyscale fits well with themes like abstraction, permanence, or monumentality. Neutral materials tend to weather and age better than colored or painted surfaces, which can fade or chip. This makes grayscale sculptures more durable over time.

From these reasons, Greyscale represents a very good longevity, silhouette, elegance, timelessness, and effortlessness.

As my personal interest and base inspiration tend to come from sculptures and classic designs with slight twists, which provoke a sense of elegance.

This theme is a best fit for my collection. In term of design, sculptural shapes could be interpreted as silhouette of a garment or detail, which can be twisted to a part of the design or blended with classic idea to create something effortless yet easy to comprehend. Greyscale would come to aid the focus on shape, detail, and silhouette of the garment by applying different shades of grey and texture from fabrics and/or print. This concept, theme, and idea would be my personal style and base thought of design, which will be reflected through my current and future work. The interests in sculptures, or silhouette, will strongly show on my pattern cutting and tailoring works. Likewise, if, I own a brand in a near future, these would be the key points of my company and design, silhouette & classic with a twist and it is not difficult to understand and projects beauty without an attempt to understand for customers and viewers.

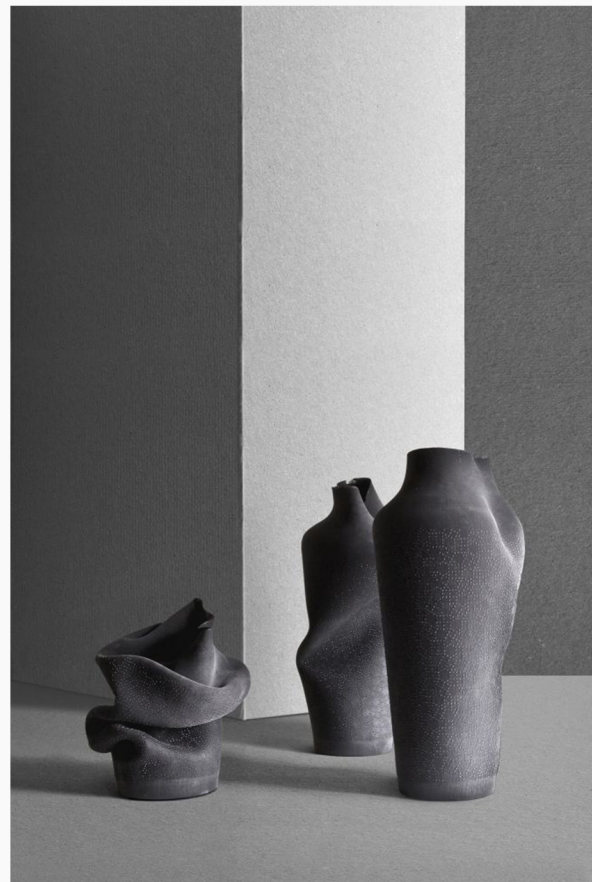


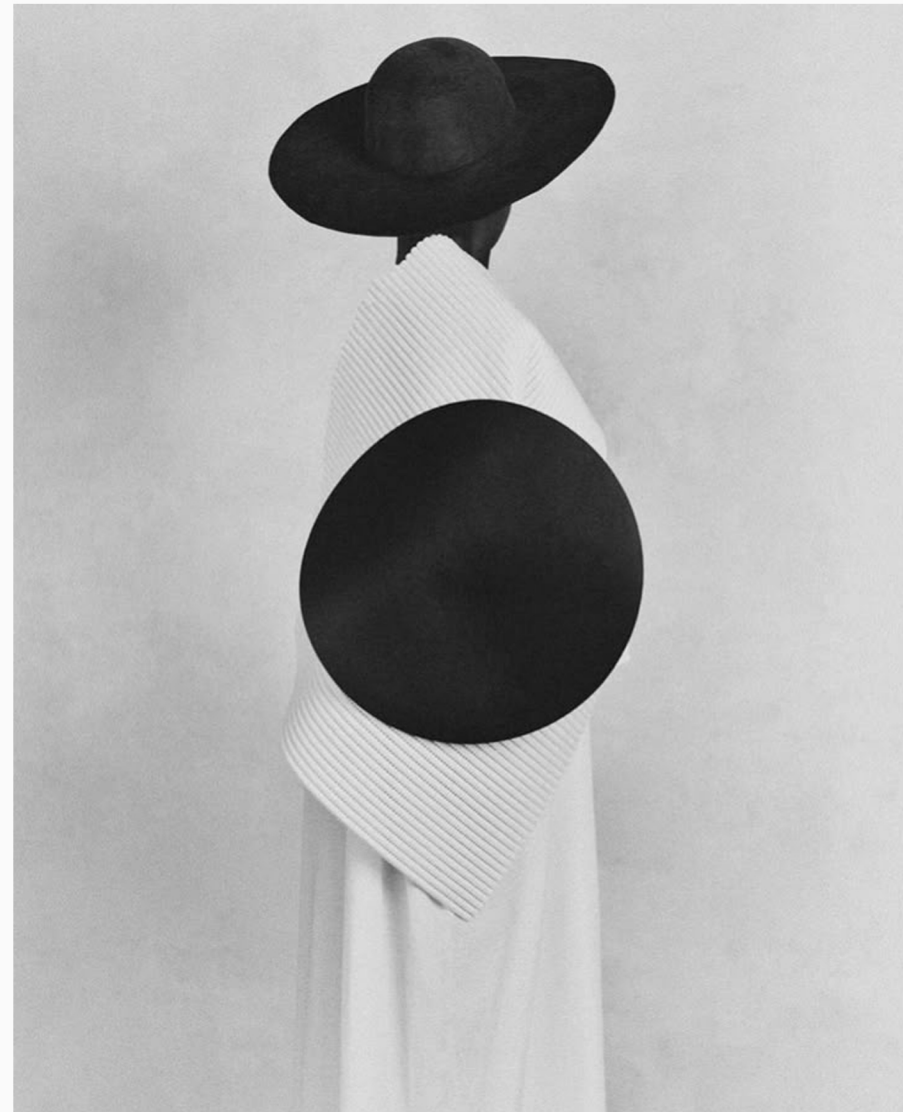
THE GREY & THE SCULPTURE; the relationship between the colour, grey, and the modern/ contemporary art & sculpture
a raw material/ a representation of solid strenght & longevity - timeless
a silhouette emphasis.

a combination, which represent modernity

Grey ;
a guidance in producing works giving a sense of emotional - strenght/ melancholy/ passion/ etc.
an understated elegance
symbolizes neuturity/ balance/ sophistication.

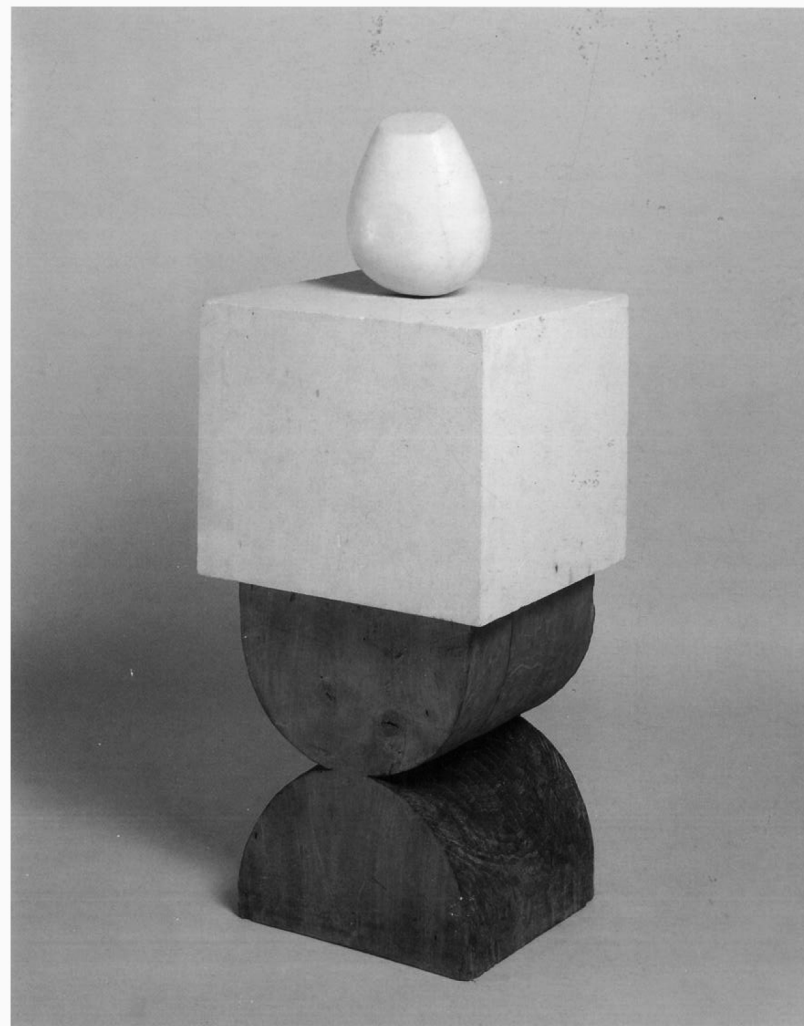
Many contemporary & modern artish adopt the "grey scale" to their work:
producing effortless modernity design and elegant sophisticated meaning.





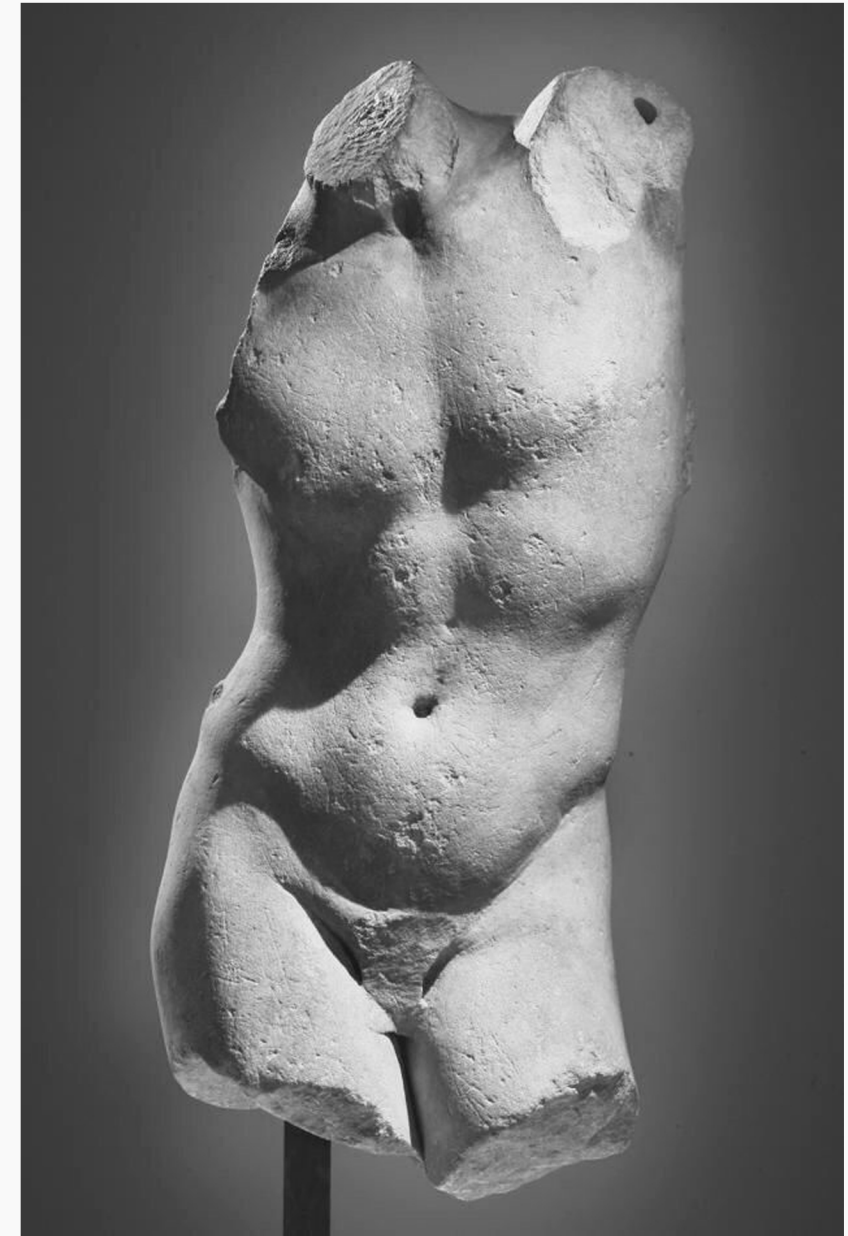
photography in GREY SCALE (black & white image) are often more dramatic than their counterparts.

This type of imagery has been used in many articles and books; especially - Art/ Fashion/ Architecture



A home decoration in form of sculpture is commonly coloured in "GREY"
: various interior designers and architectures adopt the
"neutral colour of the used element" - to define its' hulking form
as emphatically as

- a MODERNISTS' CHOICE -



RENAISSANCE; the era of replication in classical arts' values.
sculptors at this time used white/ GREY/ neutral colour of the material to mimic the image of classical ancient/ historical sculptures from their understanding.

the taste has been carried on through history til today : making GREY SCALE SCULPTURE become a standard colour for modern sculpture



SILHOUETTE: is what highlighted by the colour of GREY SCALE and the shape of sculpture

- a very interesting combination of shades and the sculpture proportion/ design create a perfect effortless yet impacted outcome

: a design, which has great proportion & detail
a usage of correct colour tone - would accommodate each other; emphasizing the SHAPE of the artwork.

A sculpture/ installation art behaving as an organic material; like fabric, for example ; the twisted part/ the roll/ the creases/ etc.

all these elements from modern sculpture could be an astonishing link to transfer modern sculptures into CLOTHINGS, fashion.





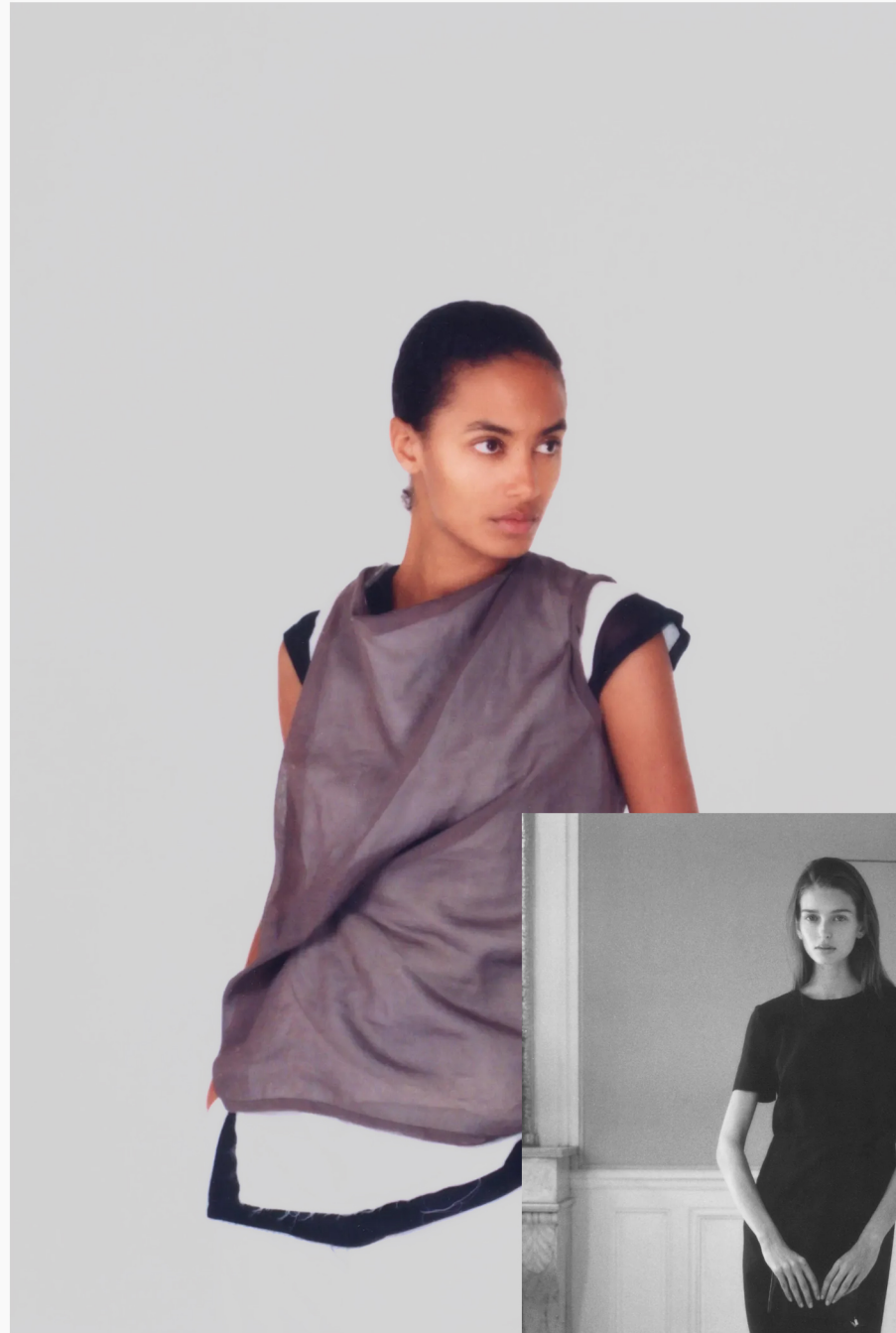
A sculpture/ installation art mood & tone of the garments & shooting industrial - concrete setup }unfinished building's construction

;all these elements from modern architecture could evaluate the beauty of the garments well
with clean background set, highlighting the clothes & the model



} Exploring sculpture inspired base in fashion design
seeing how different designers explore & interpret
sculpture - installation artwork into clothings

most of the sculpture and architect inspired bases are tend to be clean
minimal with just a touch of twist on the design
or a single main focus -eyes attraction- on the garment



As listed in vogue - UK
; the trend "School shade" - jacket / top /
silhouette that mimic a uniform is
the mood of 2025
Colour ; Charcol "Grey" and other dark subtle
shades are the core - omitting the colour
simultaneous colour

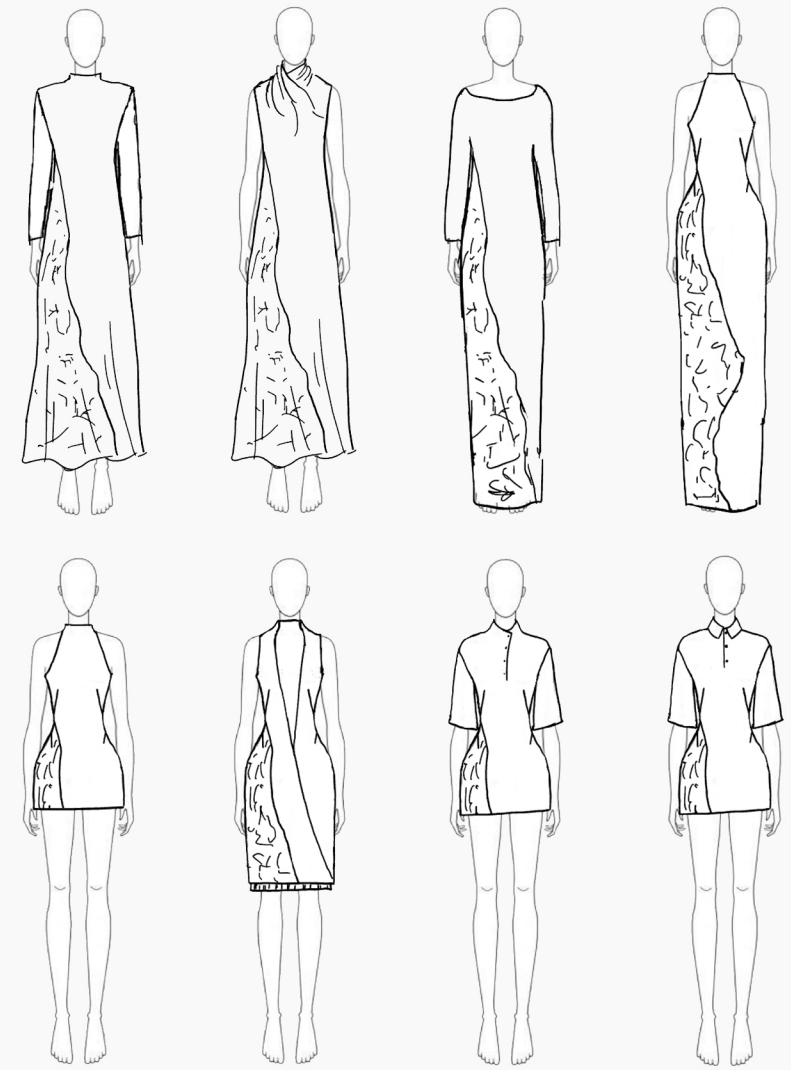
Plumager ;
Neutral grey still looks fresh for Spring Summer 2025,
with the addition of black and white! Classic bold colors,
and earthy near-neutrals round out a sophisticated palette
for spring.

Customer with "GREY"
; customers who buy grey clothes are typically
drawn to its versatility, neutrality, and ability

to project a professional or sophisticated image.
"Grey" is a popular choice for both casual and formal wear/

its versatility allows for easy styling with other colors and patterns.

Design Development ;



; the garment needs to have enough space to balance to scale of the concrete print

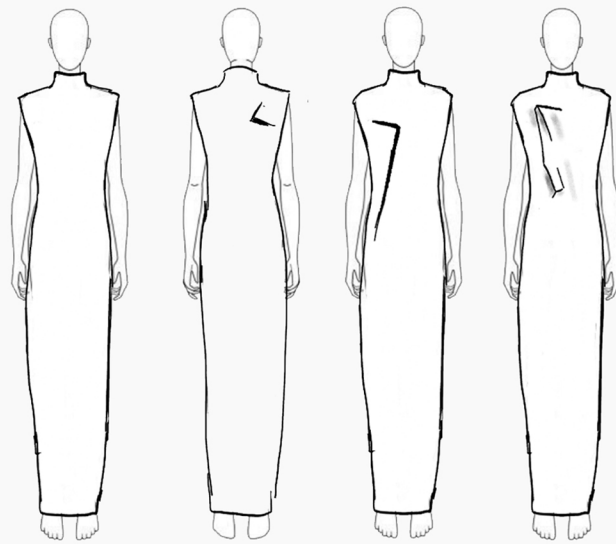
likewise/ the weight and texture of the fabric should be comfortable to the wearer

TEXTILE DESIGN DEVELOPMENT ; EXPIRAMENT



Attempting to mimic the texture and colour of the broken concrete ;yet remains the fabric volumn
- texture / touch on theinside

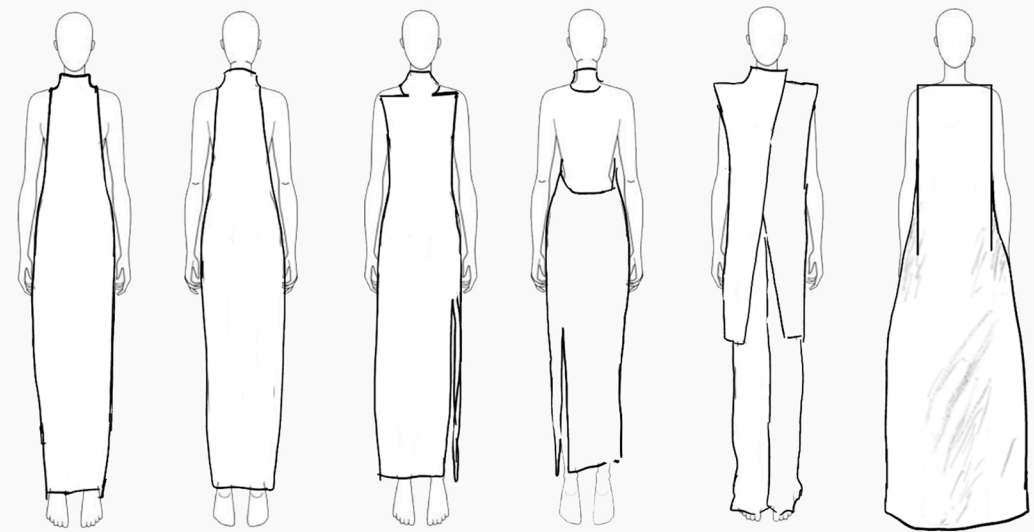
;a 3D shape on a garment
ramp shape - curved up



A dress would be a good design for this detail?
since it has more space to balance



Grown-on ; emerging out of nowhere on a cloth
sharp strong corner



An upside down vas shape - turn into a dress



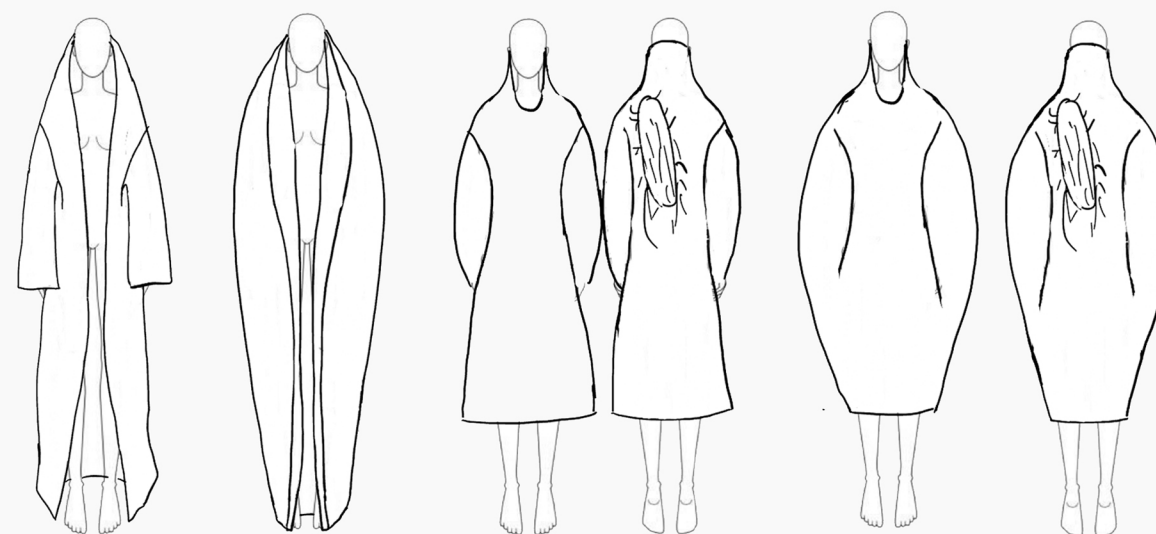
Curved corner - graded from coner
smooth it out ; turn into another shape / silhouette



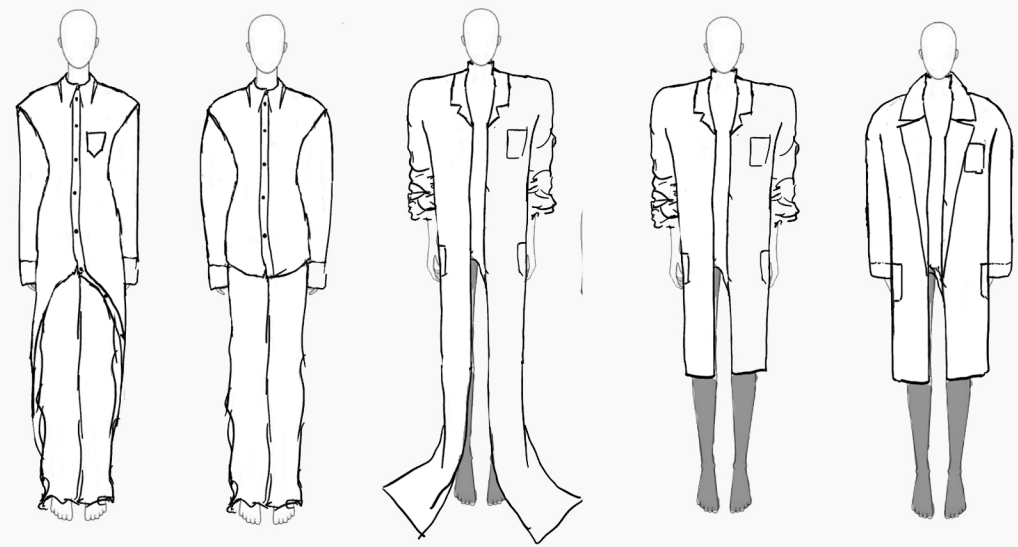
A vase clay shaped ; smashed by a solid material ;undried fallen clay vas

Grown-on - emerging?

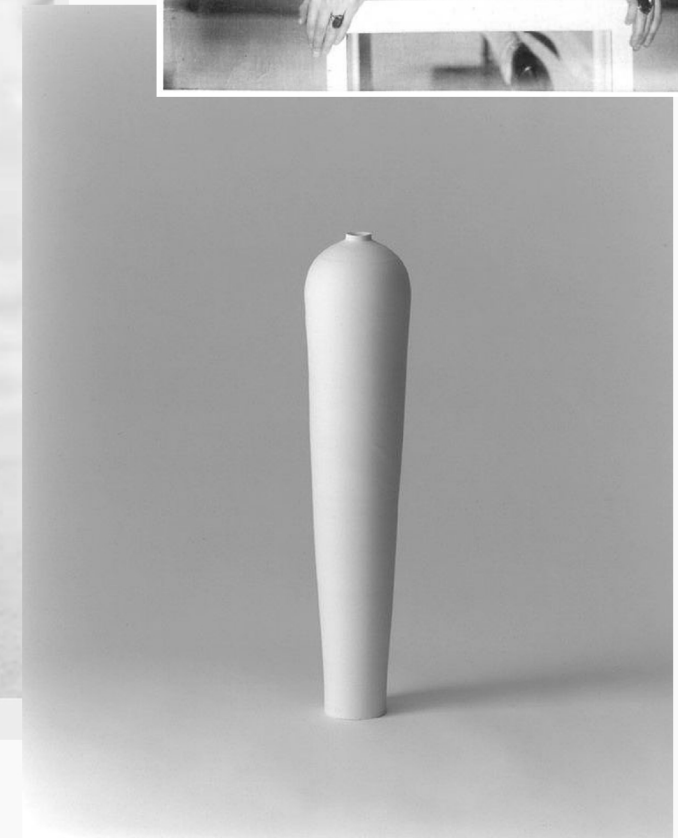
Adopt the shape of these 2 images to create a silhouette

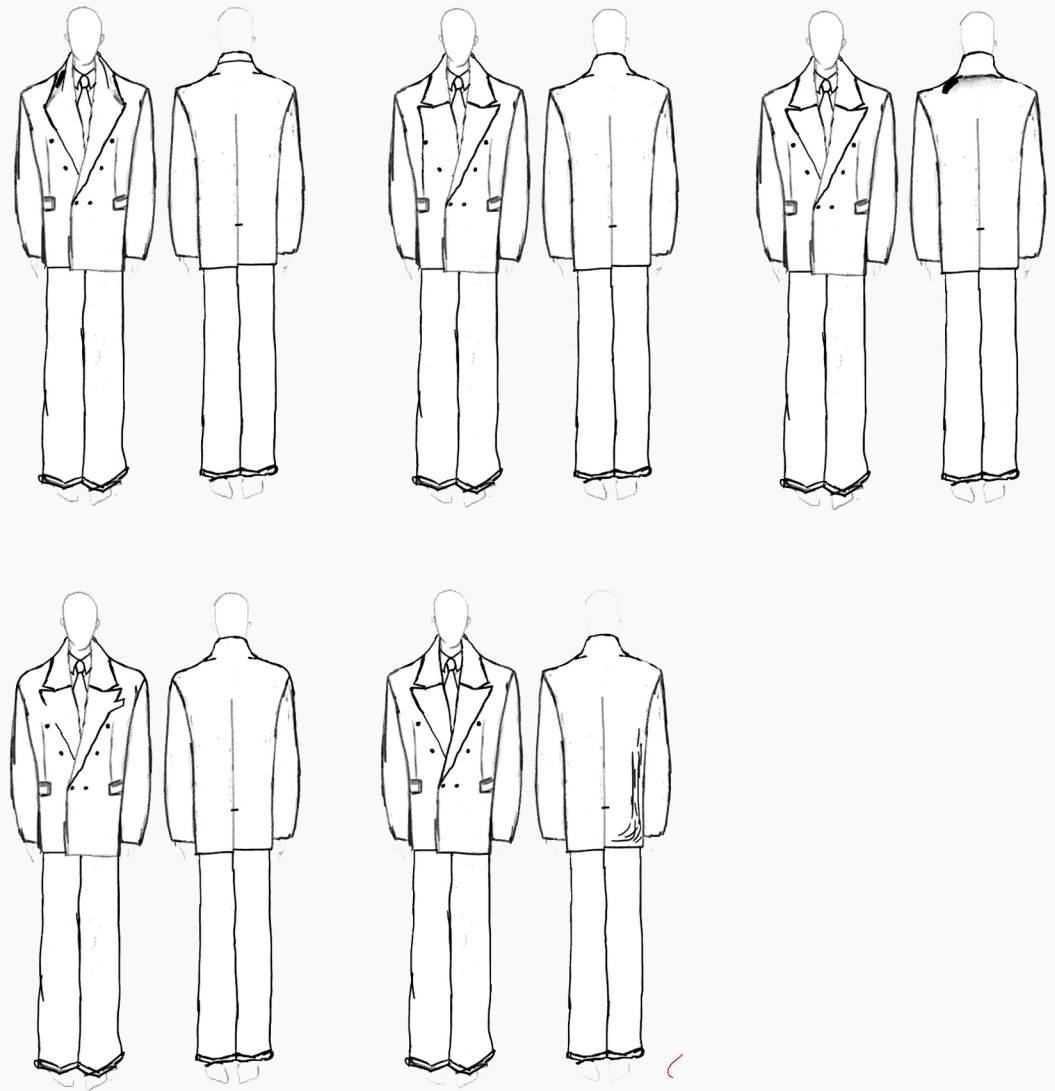


Smashed wooden stick / timber on the back

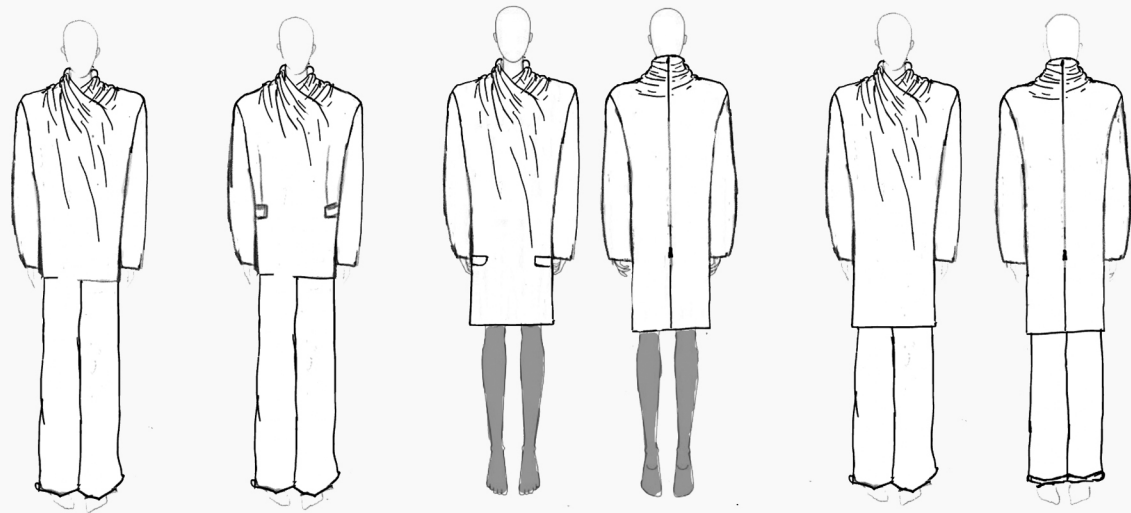


a atelier gown inspiration base with round shoulder ;laglan shoulder pad as the image





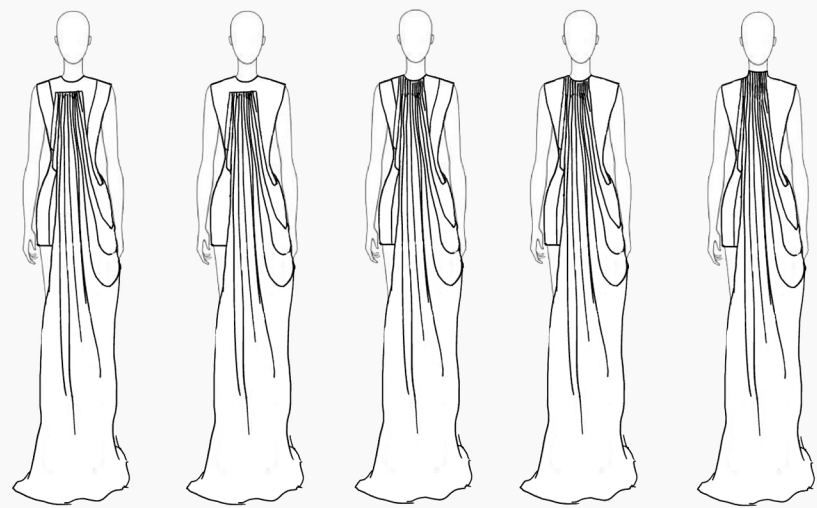
Blended collar / grown-on panel : strong & sturdy
Canvas?

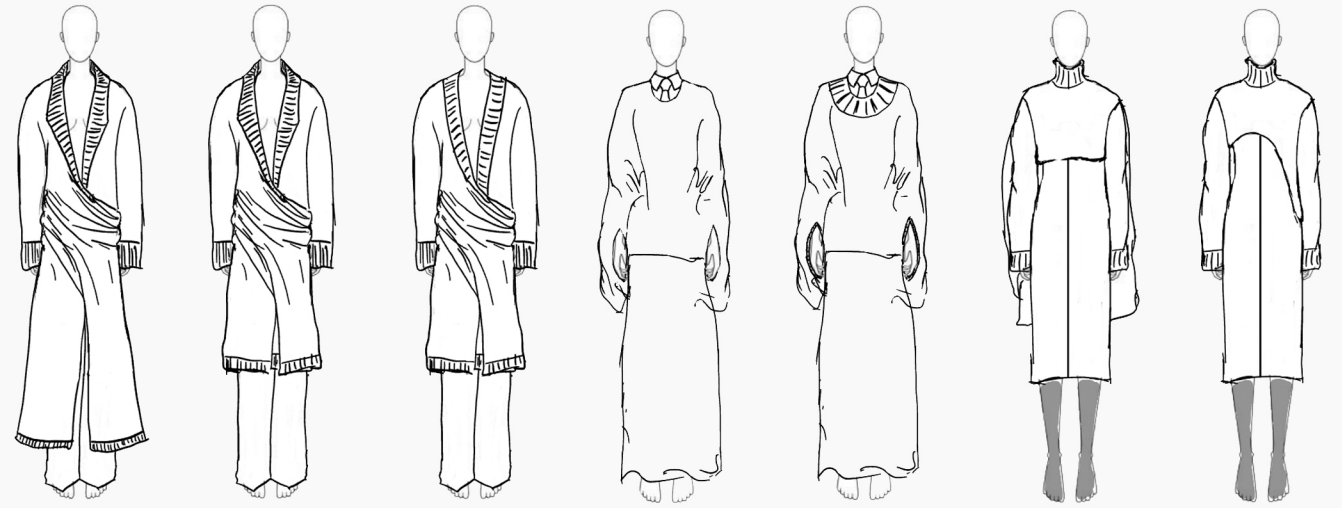


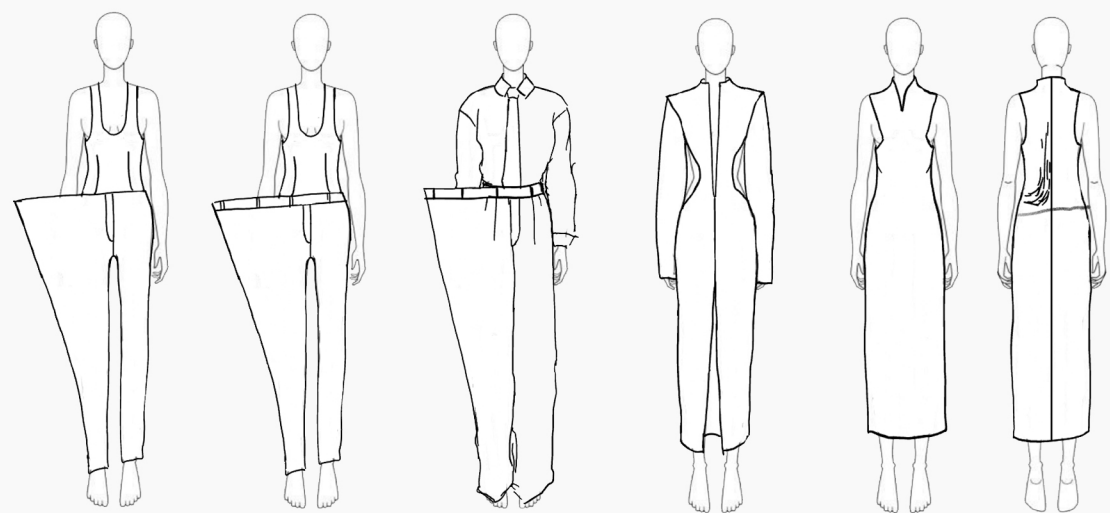
Creasing / Pleating effects on the garment?
Structure - Steady
;yet sculptural



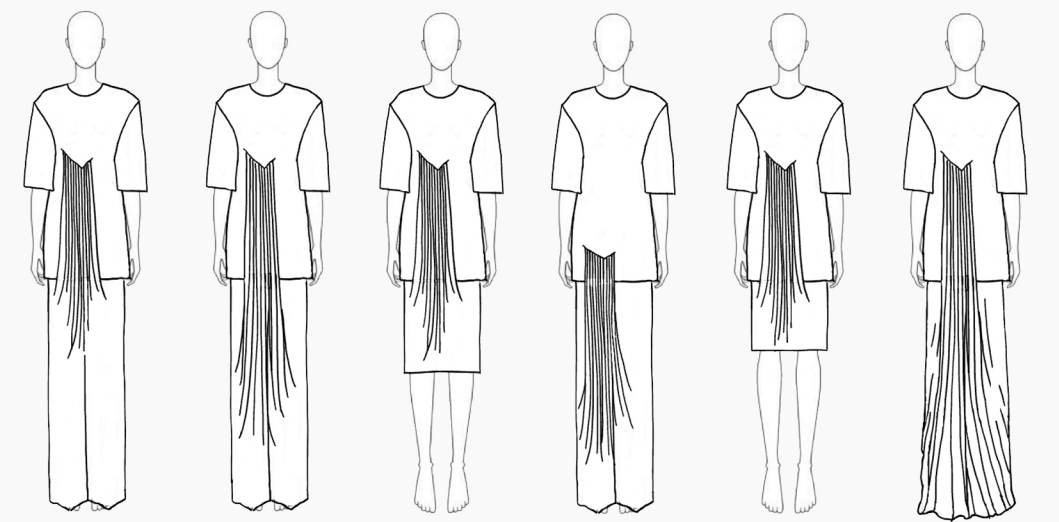
A rectangular template : a structured jacket / coat
Crease emerging from one corner??











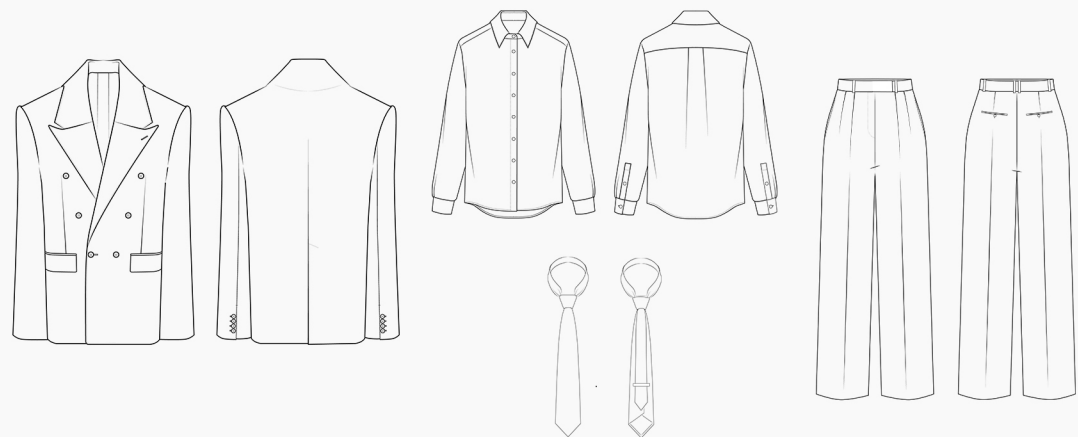


LINE UP ; 6 looks - worsted wool / flannel / print / merino yarn

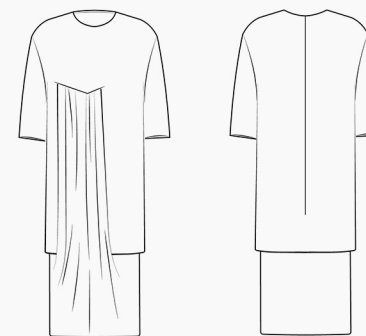
RANGE PLAN
;six looks - outfit with color & textile design



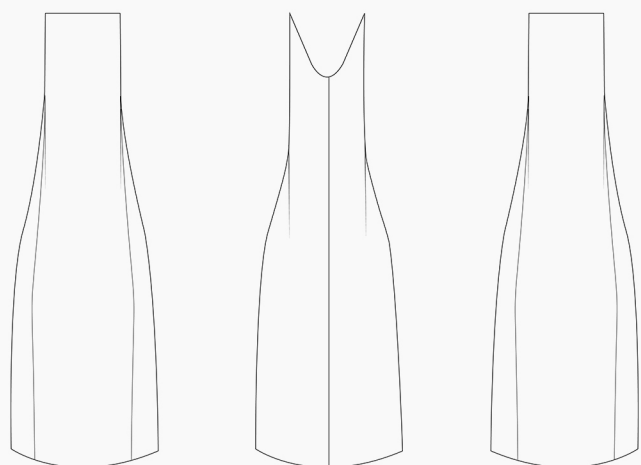
Look 1 :



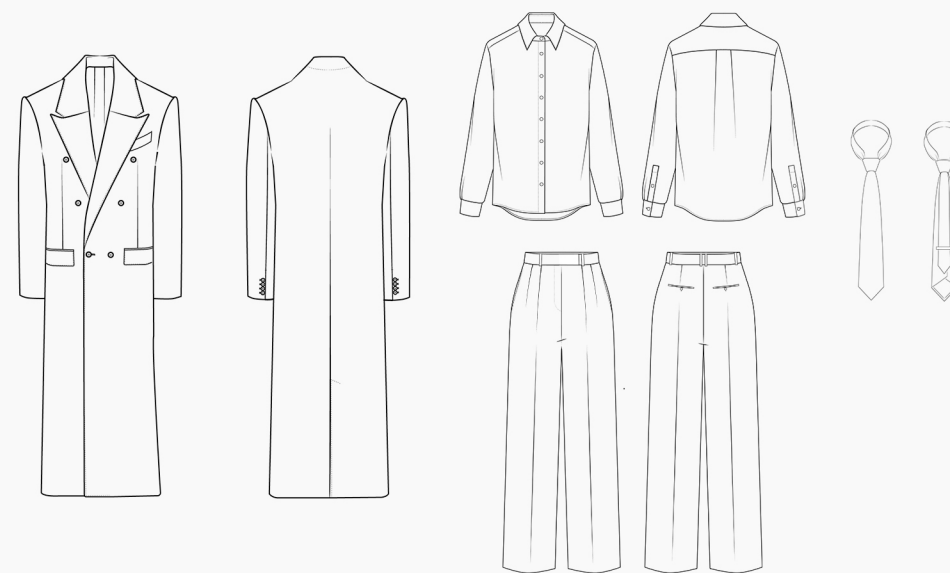
Look 4 :



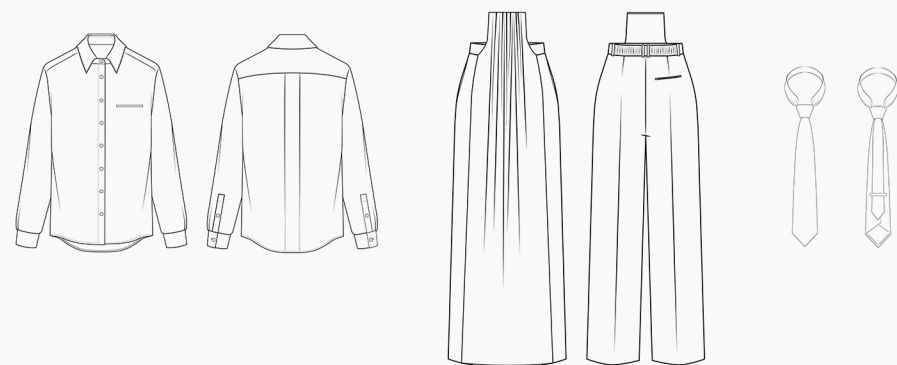
Look 2 :



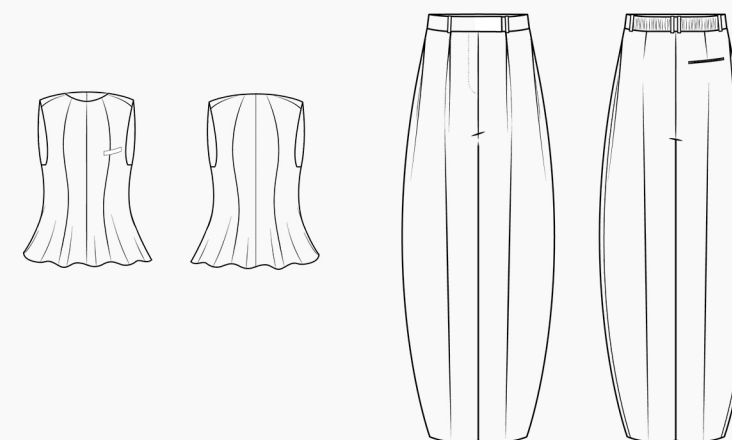
Look 5 :



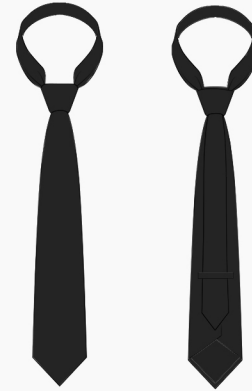
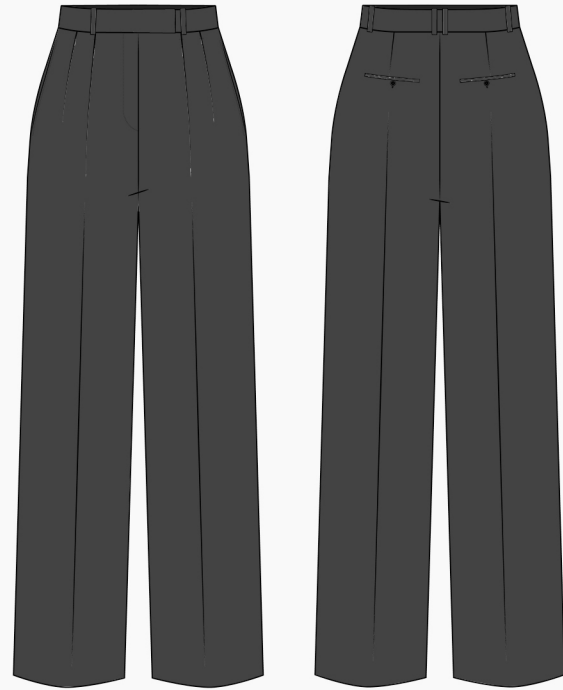
Look 3 :



Look 6 :



Final Presentation Sheet

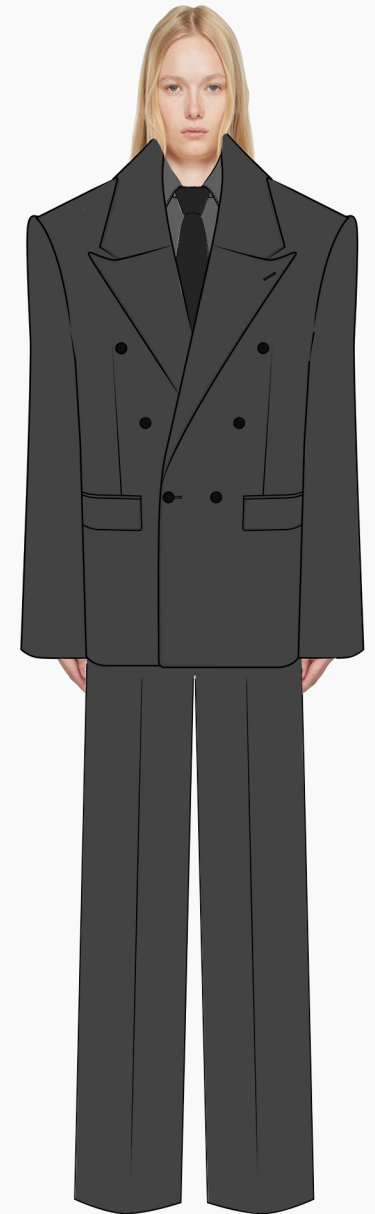


This look gives a formal look to the wearer as if going to a formal event /
When taking the jacket off it provides a office lady aesthetic
The look will make the wearer look like a boss lady working in
an art ouction compay like Kristy

The jacket & trouser is made from Holland & Sherry
Super 140's worsted cashmere blend

Jacet is a single piece bodice all round
with grown-on collar
Fully Bespoke
made with wool hair canvas

Trouser is a single pattern piece
with no side seam
Fully Bespoke



Wool S140's worsted / 260gsm - Holland & Sherry
Jacket / Trouser

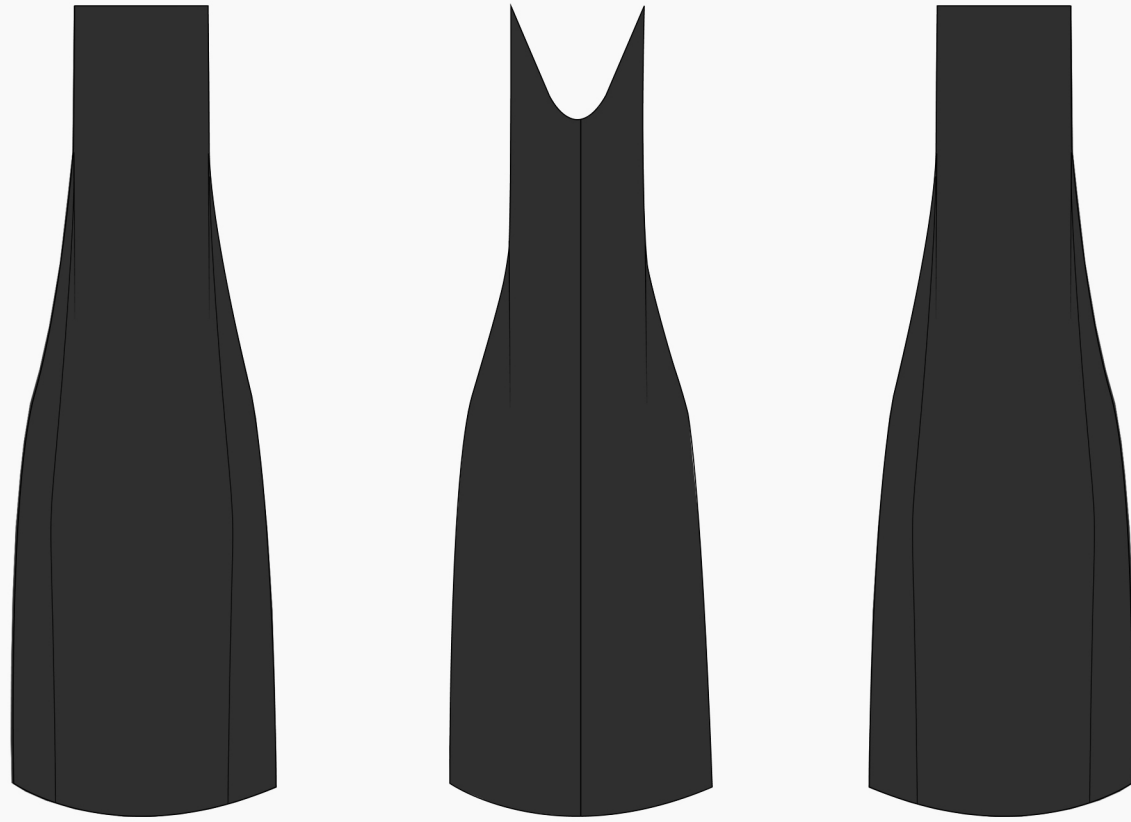
Wool S120's worsted / 260gsm - Holland & Sherry
Shirt

Wool - Mohair / 230gsm - Huddersfield
Tie

Lining - Dugdale & Bros
Jacket / Trouser / Tie

Sleeve lining - Dugdale & Bros
Jacket

Final Presentation Sheet



This look has a clean touch and chic yet artisanal aesthetic
When you put on the coat it provides a smart/
chic but dominant look
to a Gala event

The dress has a corset inside
with cotton canvas for corset

on the corset
There will be small loops attached
to provide the wearer with
external transparent strape for dress
to help holding the garment steady in place - if necessary

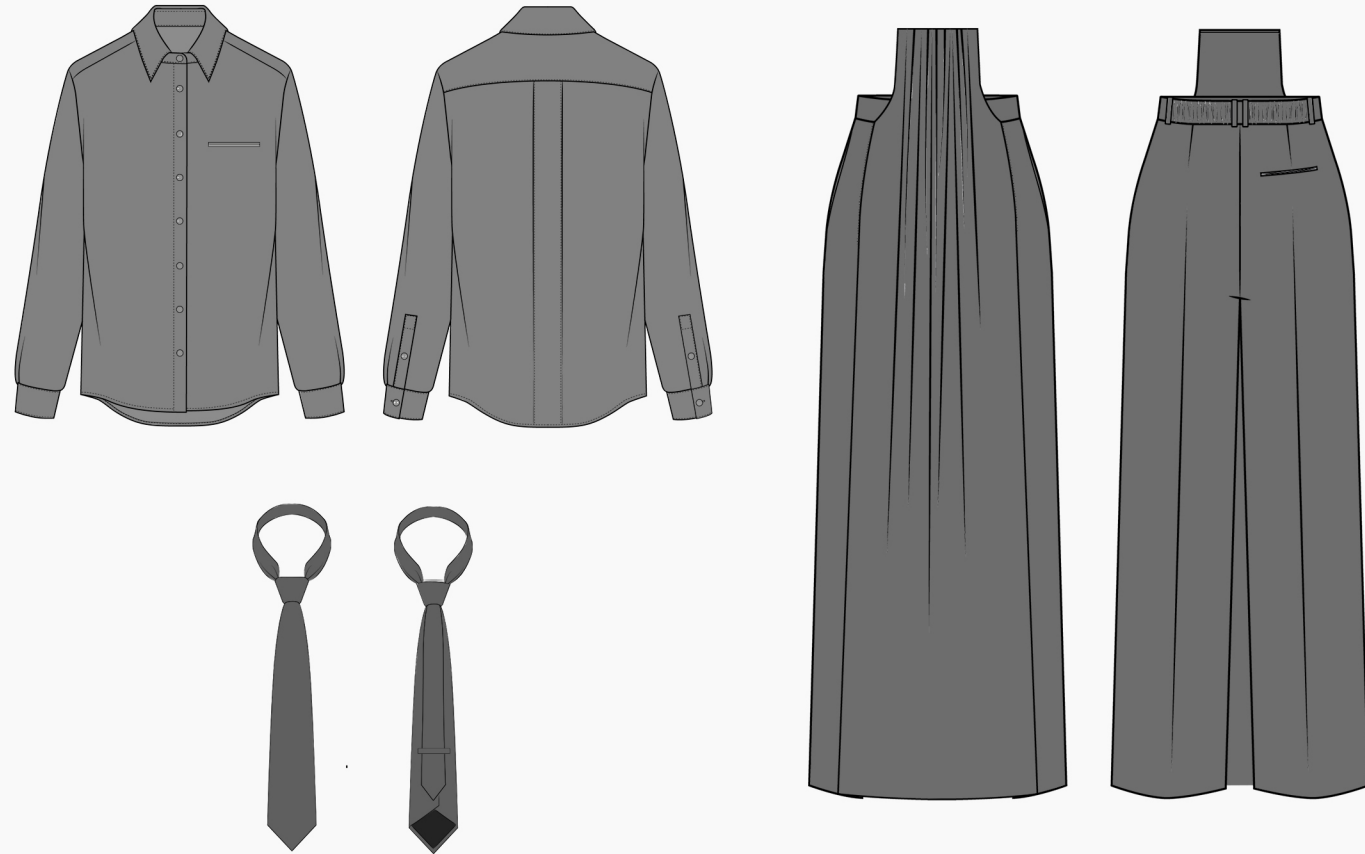
The dress will be in Holland & Sherry
Wool S120's worsted - 280gsm
with various type of interfacing to hold the shape

The front / back seam will be invisible
' been felted out



Wool S120's worsted / 240gsm - Holland & Sherry
Dress

Final Presentation Sheet



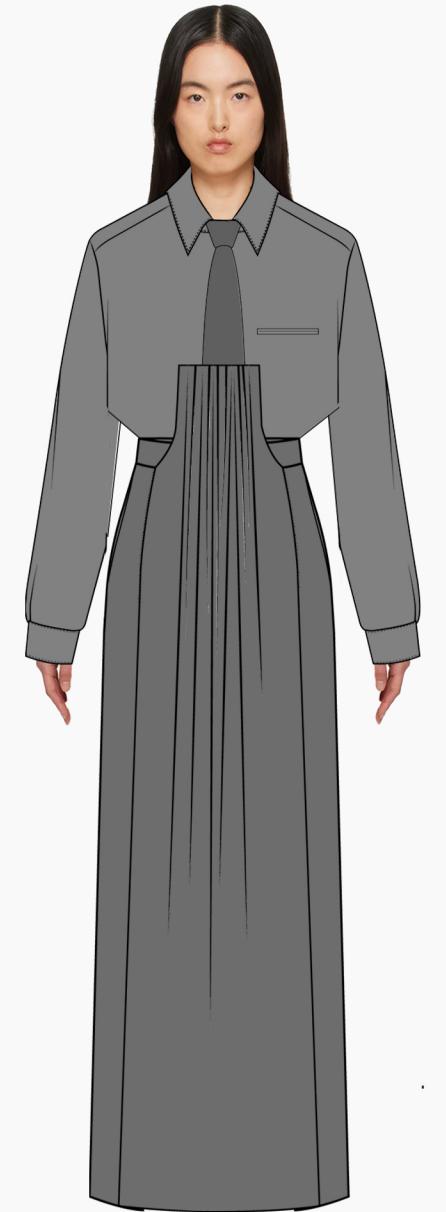
This look has a clean touch and chic yet artisanal aesthetic
Sculptic front panel/
chic but dominant look

The sculptic trouser with the front panel
giving a dress-wearing look at the front
yet trouser from other views
with adjustable waist band
plus - 2 zips opening like sailor trouser

providing comfort to the wearer
for taking in & out

The shirt will be in Holland & Sherry
Wool S110's worsted - 230gsm
cotton supreme lining & shoulder pad

The tie is a carry-on fabric
from look #01
with Holland & Sherry fabric



Wool S110's worsted / 230gsm - Holland & Sherry
Shirt

Wool S110's worsted/ 230gsm - Huddersfield
Trousers

Wool S120's worsted / 260gsm - Holland & Sherry
Tie



This look is giving a vibe as a modern granny / grocery look
an evaluated t-shirt - skirt outfit
with gathered front panel
grown on from the skirt area

The T-shirt area will be in Huddersfield Fine Worsted (Hardi Minis)
S110's worsted - 240gsm
with light-weight fine italian wool / cotton jersey for lining
to hold the skirt area

The skirt & front panel will be in
S120's worsted - 240gsm from Holland & Sherry
carry on fabric from look #03 - Box dress

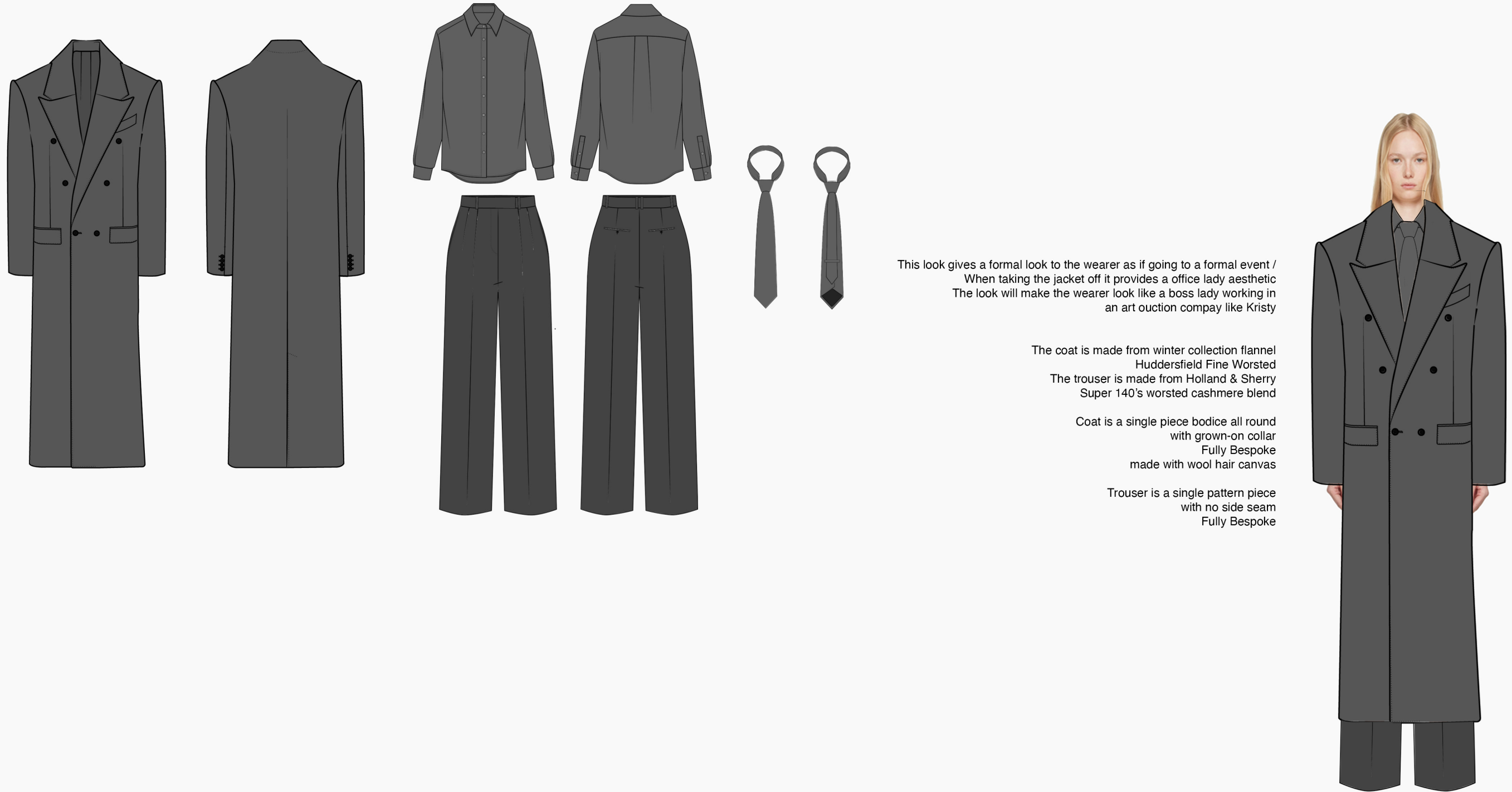


Wool 100% S110's worsted / 240gsm - Huddersfield
T-Shirt part

Wool 100% S120's worsted / 240gsm - Holland & Sherry
Skirt part

Italian fine wool / cotton jersey
T-Shirt lining

Final Presentation Sheet



This look gives a formal look to the wearer as if going to a formal event /
When taking the jacket off it provides a office lady aesthetic
The look will make the wearer look like a boss lady working in
an art ouction compay like Kristy

The coat is made from winter collection flannel
Huddersfield Fine Worsted
The trouser is made from Holland & Sherry
Super 140's worsted cashmere blend

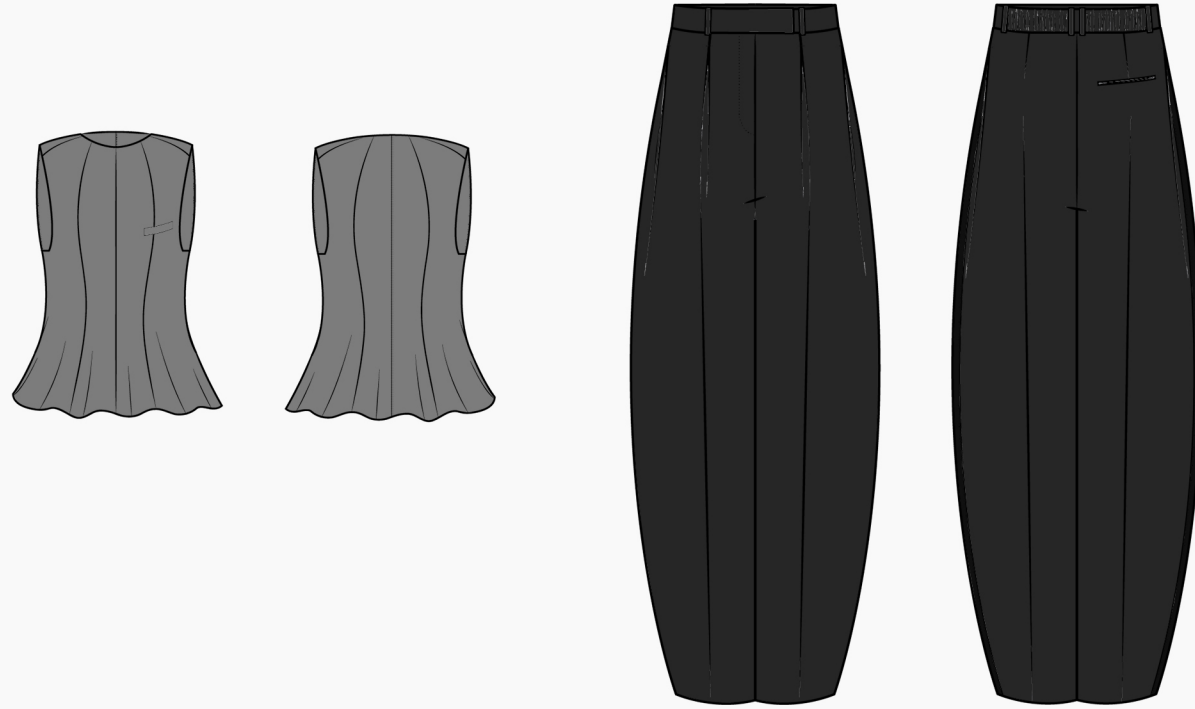
Coat is a single piece bodice all round
with grown-on collar
Fully Bespoke
made with wool hair canvas

Trouser is a single pattern piece
with no side seam
Fully Bespoke

Wool Flannel - Winter collection / 280gsm - Huddersfield
Coat

Wool S120's worsted / 260gsm - Holland & Sherry
Shirt / Tie

Wool S140's worsted / 260gsm - Holland & Sherry
Trouser



This look has a clean touch and chic yet artisanal aesthetic
Sculptic front panel/
chic but dominant look

The sculptic trouser with the front panel
giving a dress-wearing look at the front
yet trouser from other views
with adjustable waist band
plus - 2 zips opening like sailor trouser

providing comfort to the wearer
for taking in & out

The shirt will be in Holland & Sherry
Wool S110's worsted - 230gsm
cotton supreme lining & shoulder pad

The tie is a carry-on fabric
from look #01
with Holland & Sherry fabric



Wool S110's worsted / 230gsm - Holland & Sherry
Shirt

Wool S110's worsted/ 230gsm - Huddersfield
Trousers

Wool S120's worsted / 260gsm - Holland & Sherry
Tie



Final Shot - Look #01_____



Final Shot - Look #03_____



Final Shot - Look #04_____



Final Shot - Look #05_____



Final Shot - Look #06_____