

MEA:WILKS

Technical File

ba (hons)
fashion design
and
development



Art identity, what do they
mean, an art creates a collectively
meaning group identity?

CHURCH
TERRACE SE13



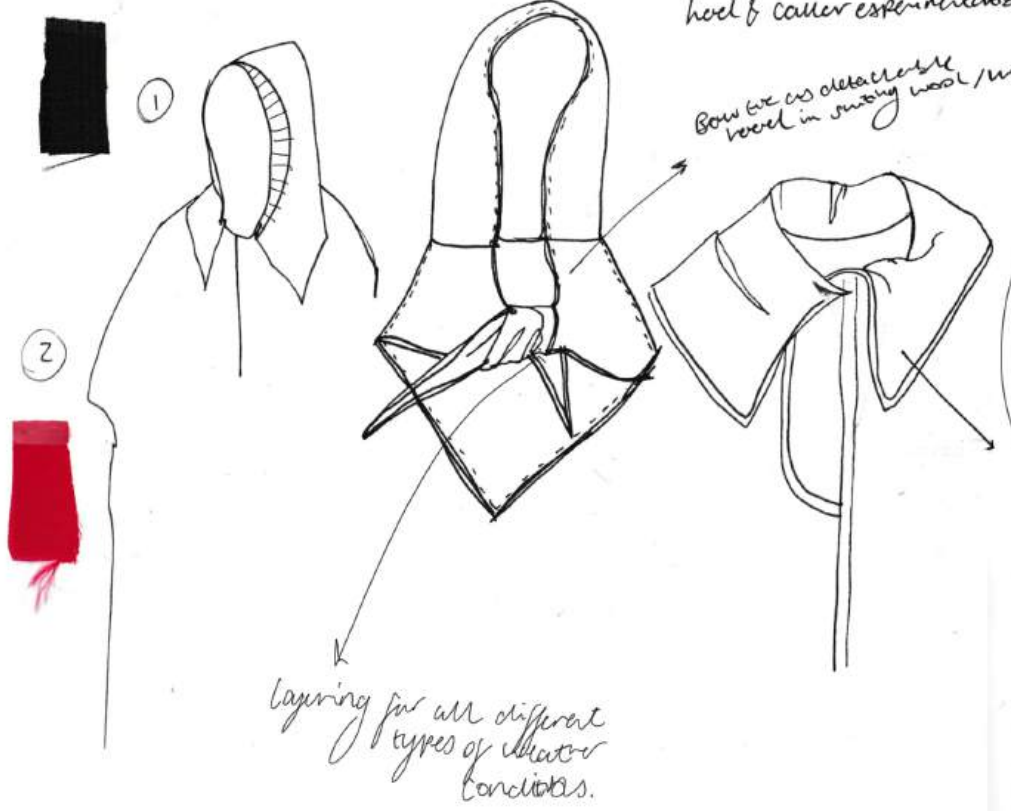
Church
interiors
for folklore
& print
inspo.



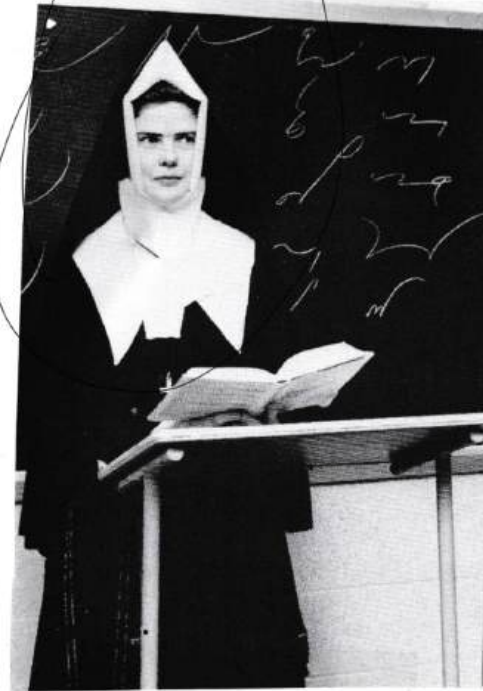
vintage prints &
enochian.

Silhouette Reservoir

nylon water proof fabric

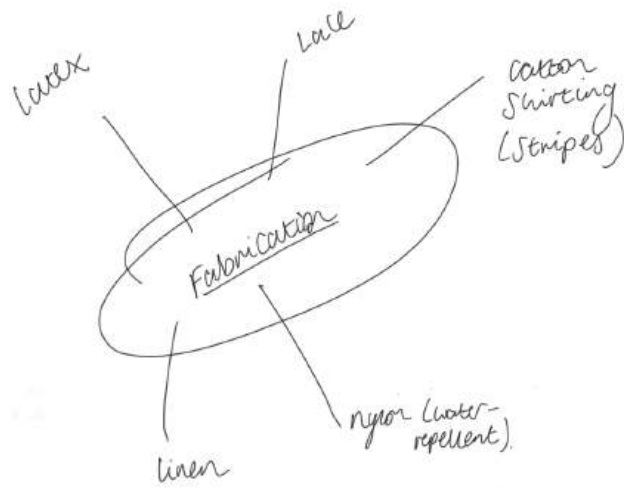


Incorporating silhouettes of traditional / classic cut wear, i.e. nuns, priests etc.



* instantly recognizable white & black garments. *

AM



Suiting, wool



looking at church interiors & what evokes memories of being inside these 'holy' spaces.



Synthetics, lace

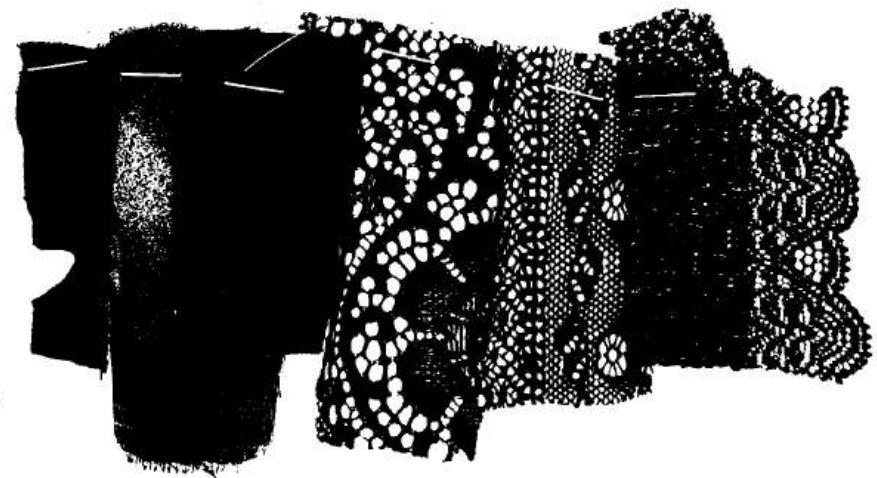
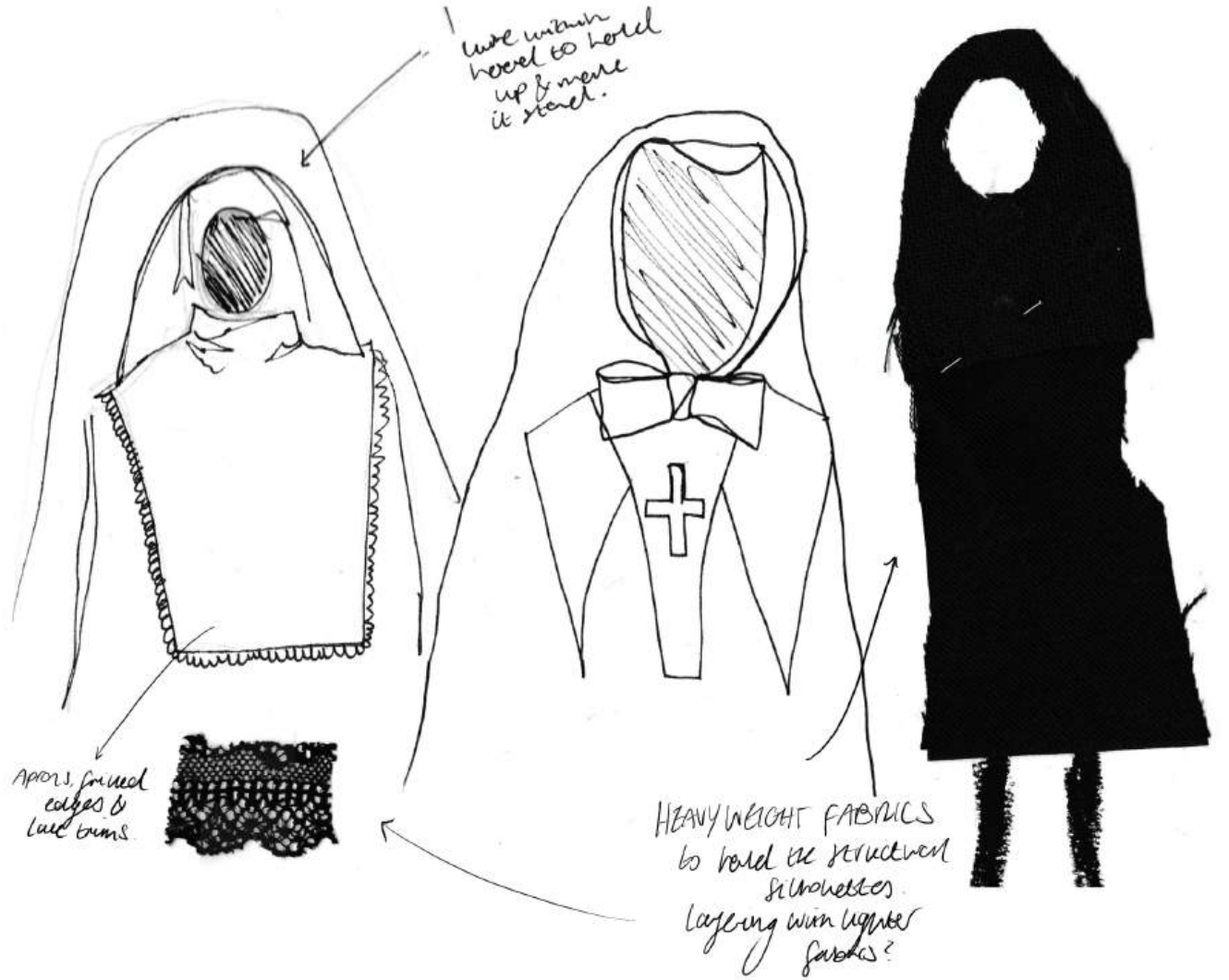


Fig. 11. High class materials. Mary Dwyer, portrait gipsy. XIX c.



pinstripe?
neck & breast?

Barbar jacket?

frill edge on
collar
TIE waist.



Pinstripe shirt
gathered cuffs &
puff sleeves.



Sleeves
Bias



Bottom

Straight
grain.

pockets



pleated top
waist &
ribbed
bottom
nylon?





Seems from archive christian catalogues
of clothing. basic garment is considered
sacred and treated with immense care



ecclesiastical & church-y
lace trims/
even in nuns



like bouffant
but pinned
with dress?



Moomies mass weddings

Fabric Sourcing

Width 140cm Width 140cm Width 140cm Width 140cm Width 140cm Width 200cm Width

TE
Com

15
VALENCIENNES ELASTICA
7.01 PIZVAL SRL
ABOUT CMS 110,9
CONTENT 67%CO 28%PA 5%EA
COLOURS MT 0

Fabric Sourcing

C. B. No

NOTAN %C
INOTIO %/G

59100
FA

Cost	Cost	Cost	Cost	Cost	Cost	Cost
€29.95	€45.	€29.95	€40.	€40.	€40.	€40.
Width	Width	Width	Width	Width	Width	Width
140	140	140	140	140	140	140

Wash Jersey



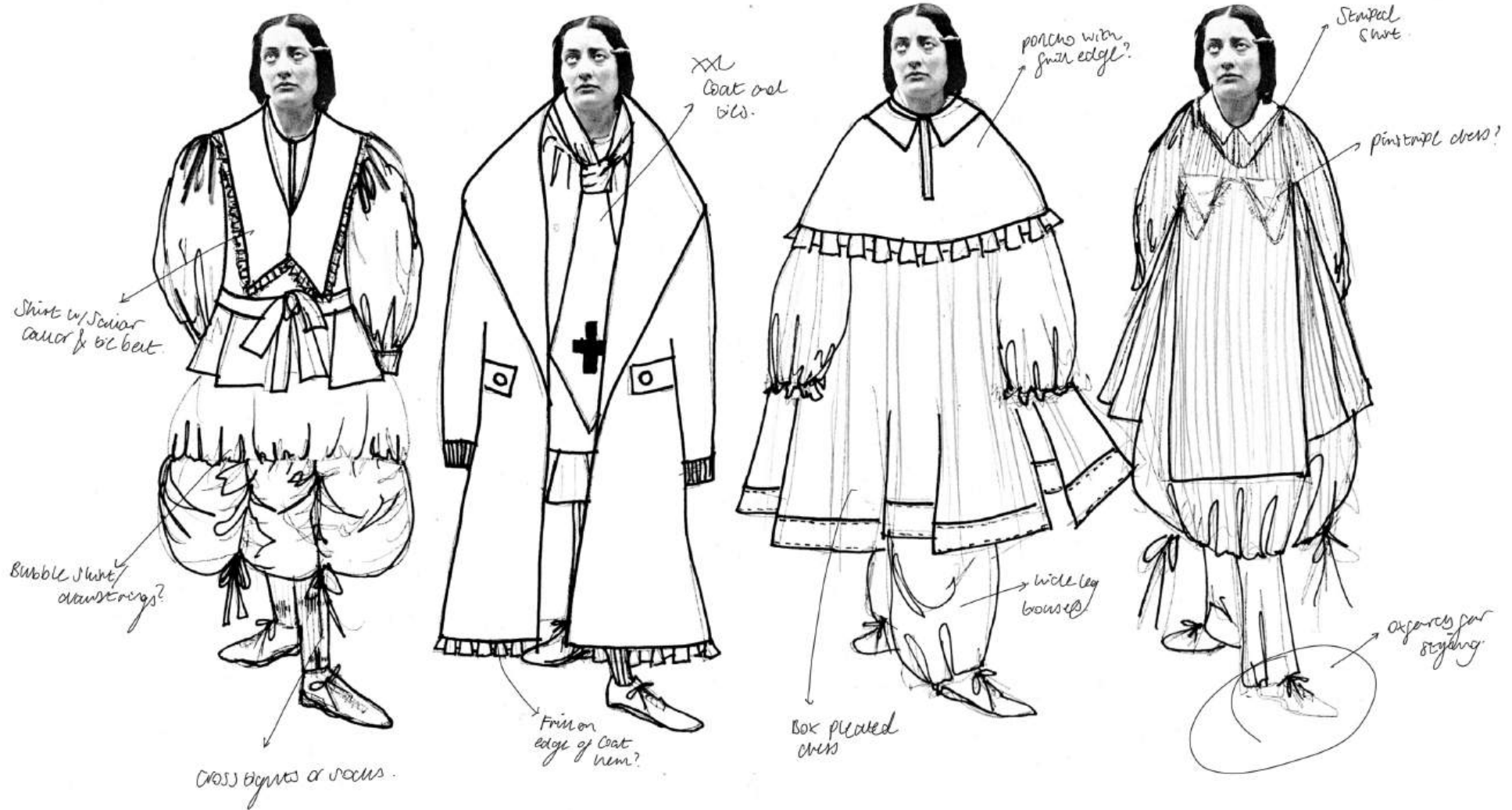
E 19.95 · E 19.95
Width Width
Width 120 Width
net-

Fabric Sourcing



✦ Early Design Development

MEA:WILKS

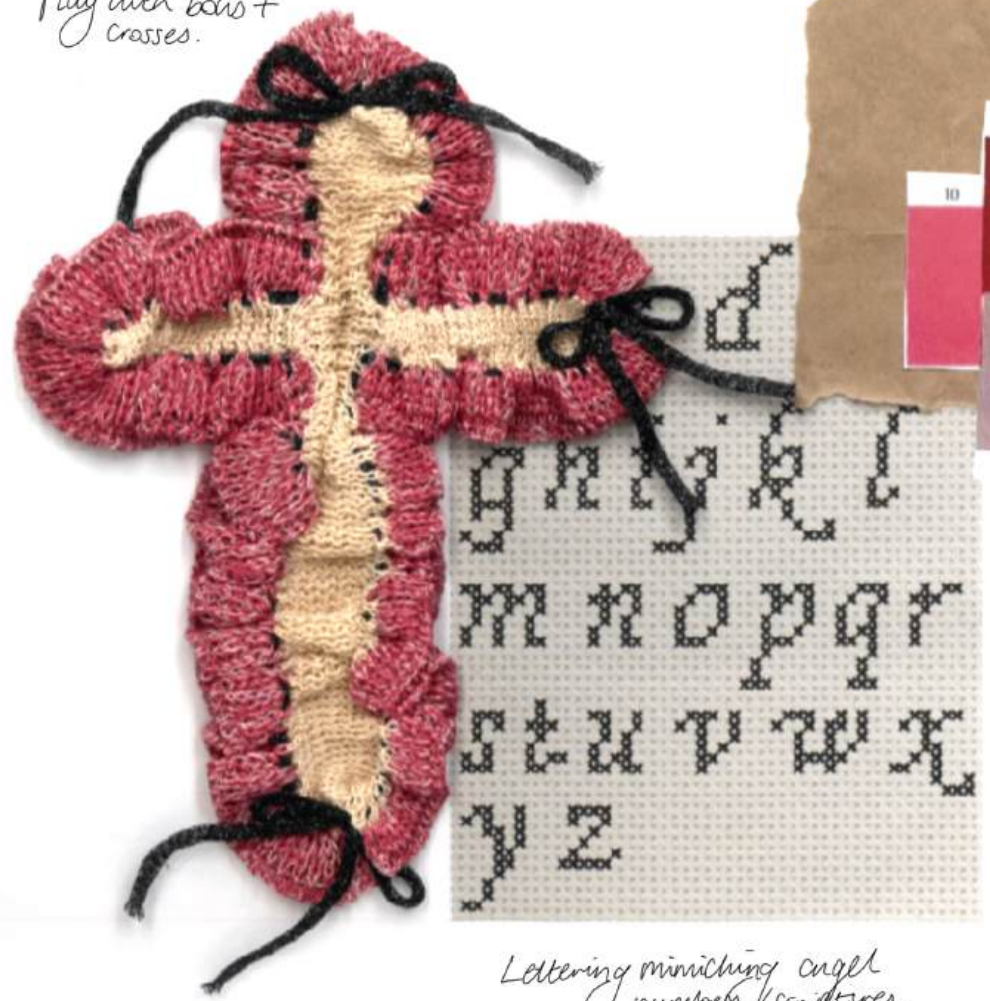


MEA:WILKS

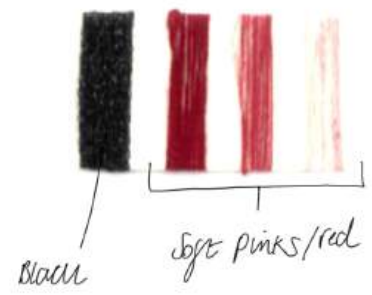
Colour Palette Testing

*Knitwear Development
x Chanel TSCN*

Play with bars + crosses.



Lettering mimicking angel numbers/scripts.



Knitwear Development X
Chanel T500

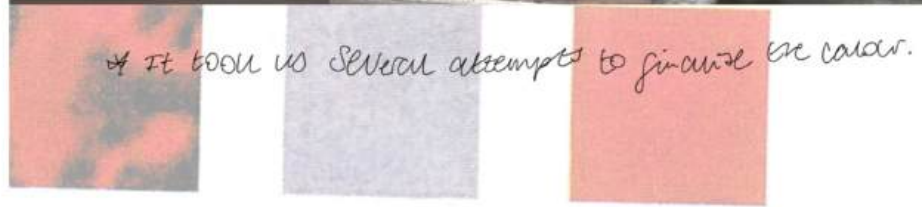


hood will be made of three parts: main part is knit with crosses and tubular to create imperical ends (can be extended to desired length) trim is optional
 additional: separate parts will be in two main pieces of the hood upper covering head and bottom covering neck.





Colour palette inspired by
Thought forms - Annie Besant
1905.



It took us several attempts to finalize the color.



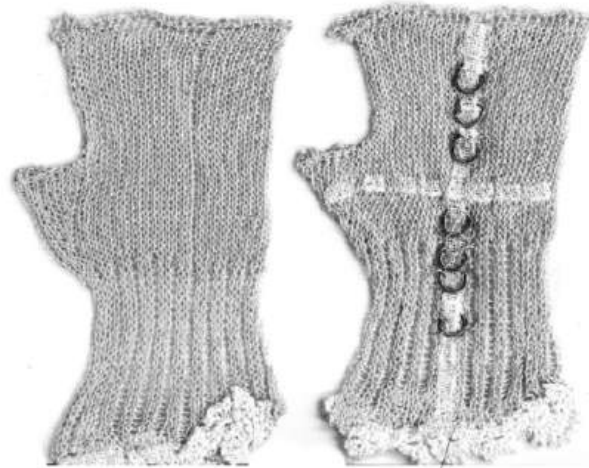
We ended up picking with very
neutral combination of wool,
cream & red.



Final design
for covered gloves.

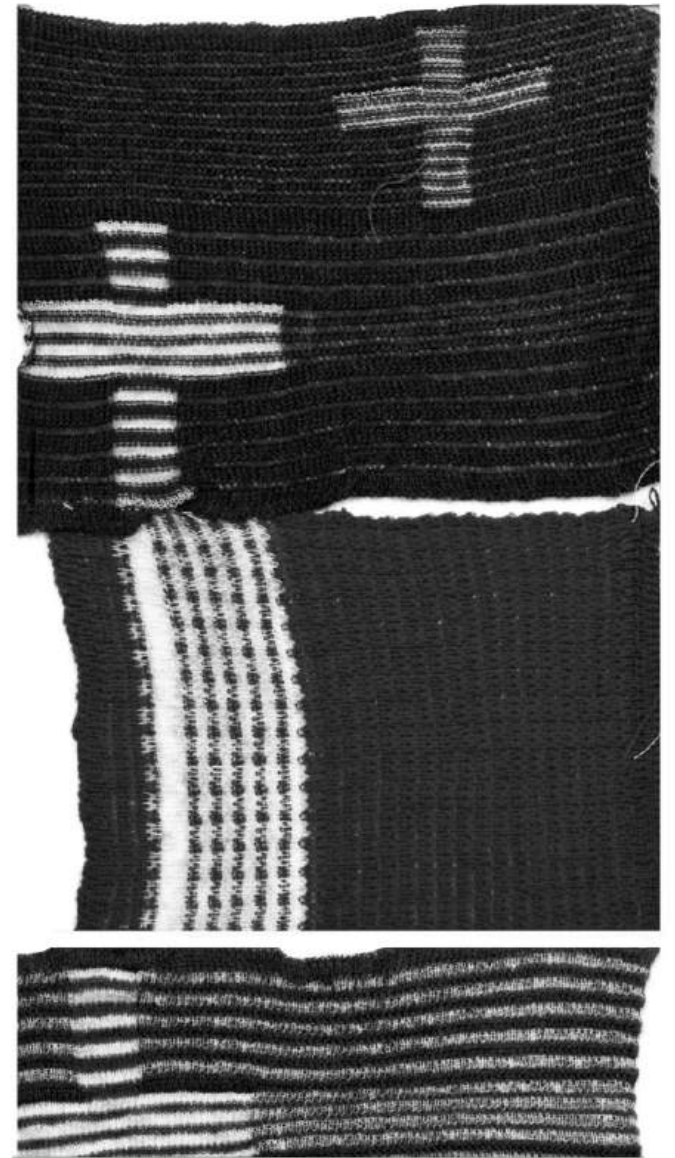


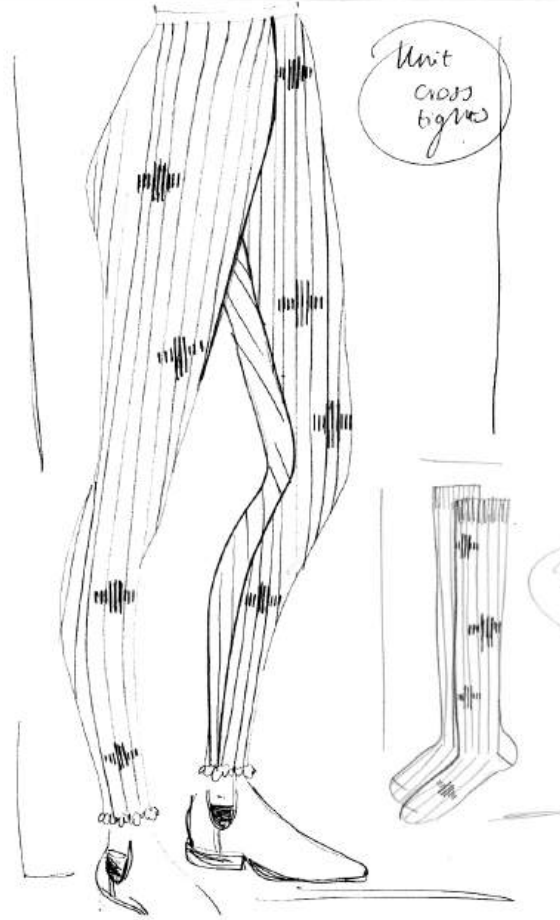
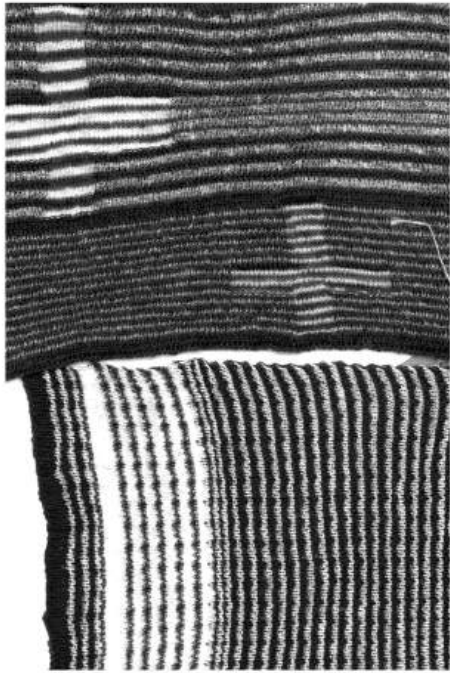
Gloves in mind here.
Make pink with silver loops?



Testing knit
edges.

Crosses woven into print
design to subtly nod
to the iconography of my
religious upbringing.



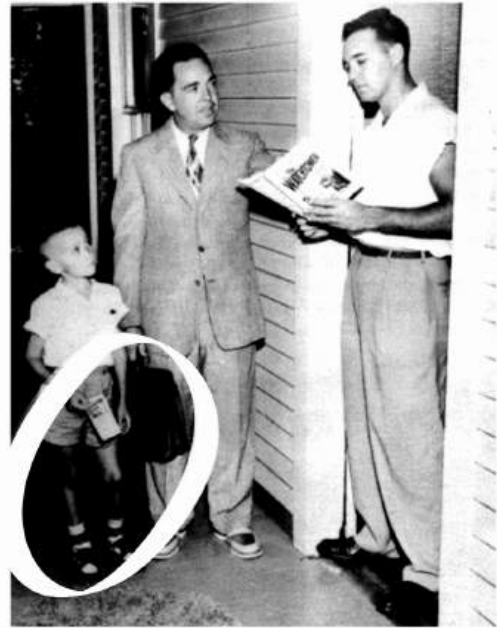


knee length
socks
crossed knit
development by
Chanel.



Unitwear developed
by Chanel Tsal.

Different
lengths
for trying
options



Unit
cross
by the way



Mixing boyish
tailoring
with fun
stripes and knits.

* Different definitions of modest
for men & women. Women encouraged
to not show skin or legs as deemed
as immodest.



Unisex design: Stocking
Socks.

"THE ILLUSION STOCKING"



Creating modest looking
stockings that
could be worn in variety
of lengths & styled
crossbody w/
collection.



Added laced-
up side detail
to match bow feature
of drawstrings of cross.

knitwear & print
collaborations
bury memo from
the Oracles.



stained glass windows



Crosses in knitwear
match the cross symbol
of the church cross
it is paired with.
Handicraft representing
modernity



Creating dresses
which have
their resonance
church / chattering /
wedding
dresses.



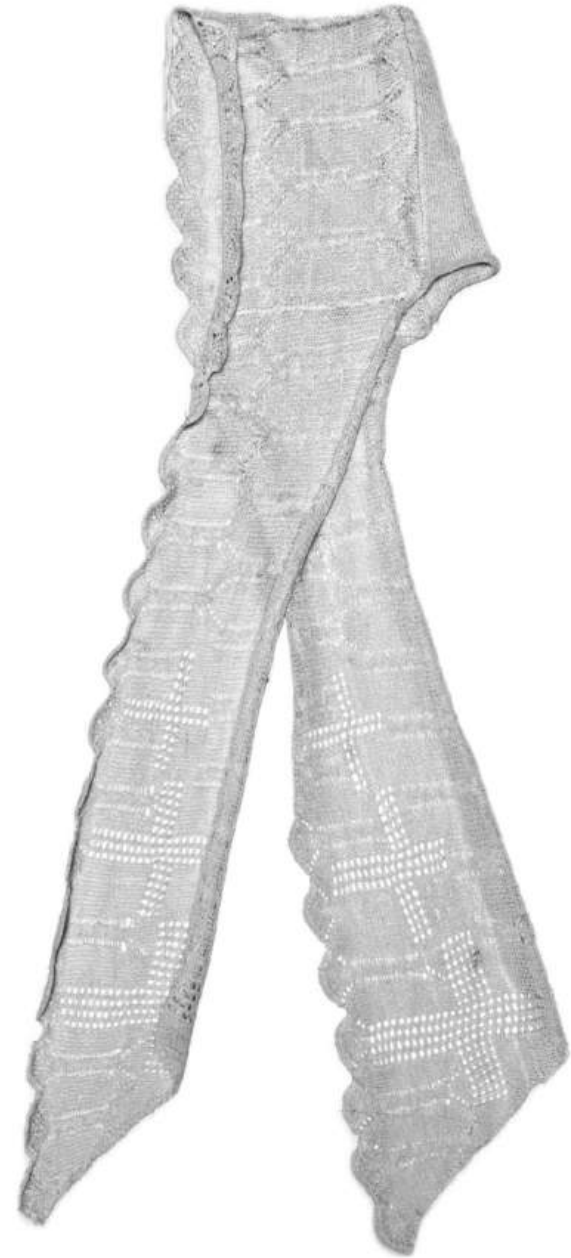
Inspired by the uniform
of Petrovich's winter women.

heavy hooded scarf
subtle crosses
embeddeed into
the knit weave



lace
knit
hood
scarf

lace
knit
hood
scarf



Look One:
Easy Developments

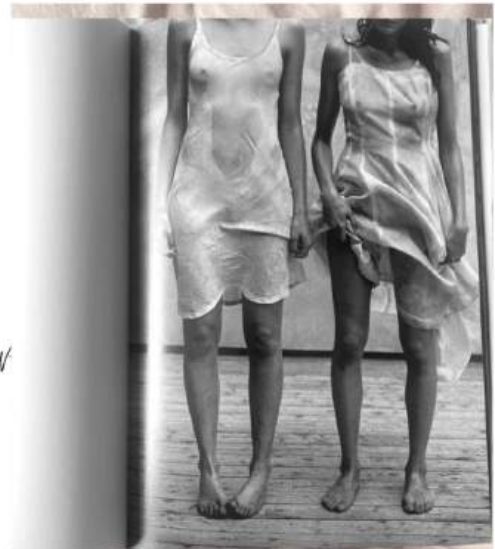


Classic slip dress base to begin draping with.

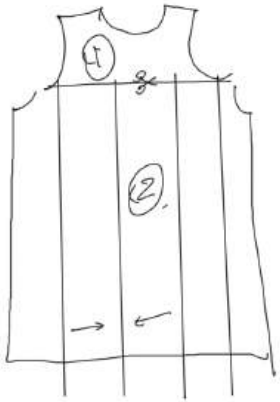
What NOT to wear to church...

① The Slip Dress

Fold over the bust to create new neckline & strap detail



* Add lace insert to the bralette?



① Separating body from bust/youve
section of front



Box pleats on front & back of
pattern.

② Creating box pleats & furling
back into the top half.



pockets to
store
chalice.



Pope's intricacies of gowns & crests of
nuns.



Trims Sourcing, London Trimmings.



Bridal cord

white lace trim

Black lace trim

Bias binding

Rawstring

Thick rope cord, black & white.



Lace trim w/ pearls.

Thick rope cord.



Buttons

Bridal cord



Decorative buttons

Draping referencing church curtains.



Add drawstring inserts here to gather up the dress.



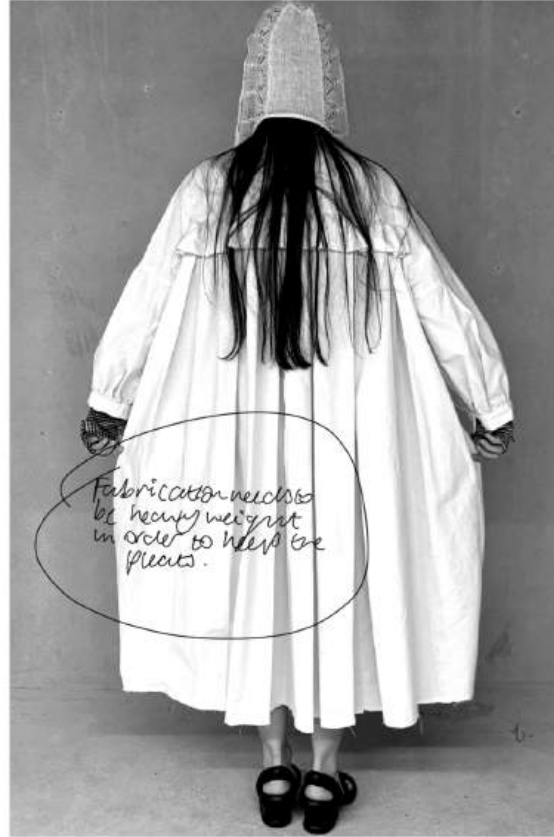
Changing picarette from classic pearls to draping.





① Fitting - Church Dress





Fabrication needs to be heavy weight in order to keep the pleats.

Pongees double faced
sewn → too shiny



Worship over white linen, or tulle with it's biblical connotations but too light weight.

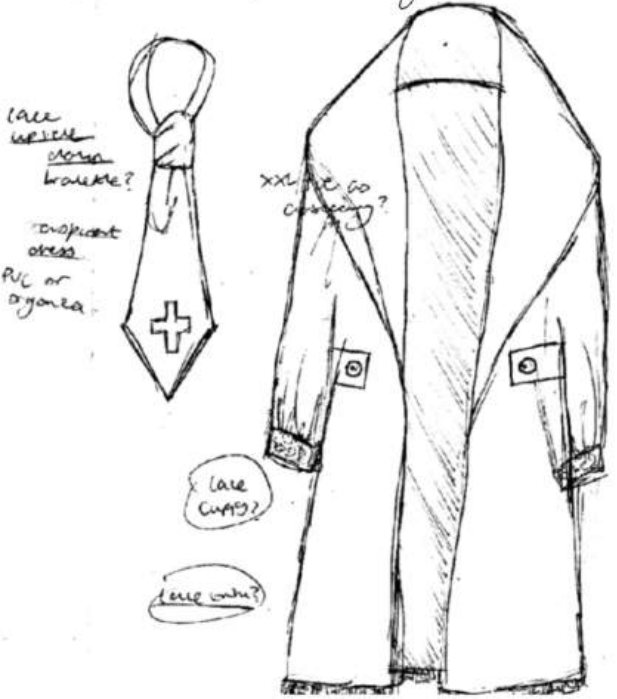
- White PVC -
- * Heavy weight
- * Interesting texture
- * unexpected for a dress.
- * known for being sexy not modest.

Design sketches from sketchbook.



→ Add frills onto the back of the coat!

Original sketch for design.



Tie with this look may distract from dress.

Bible sized pockets.



Tie traced from old tie, could become a neck strap feature of coat?



extend the collar layers on the coat to resemble lightened blazer/formal look.

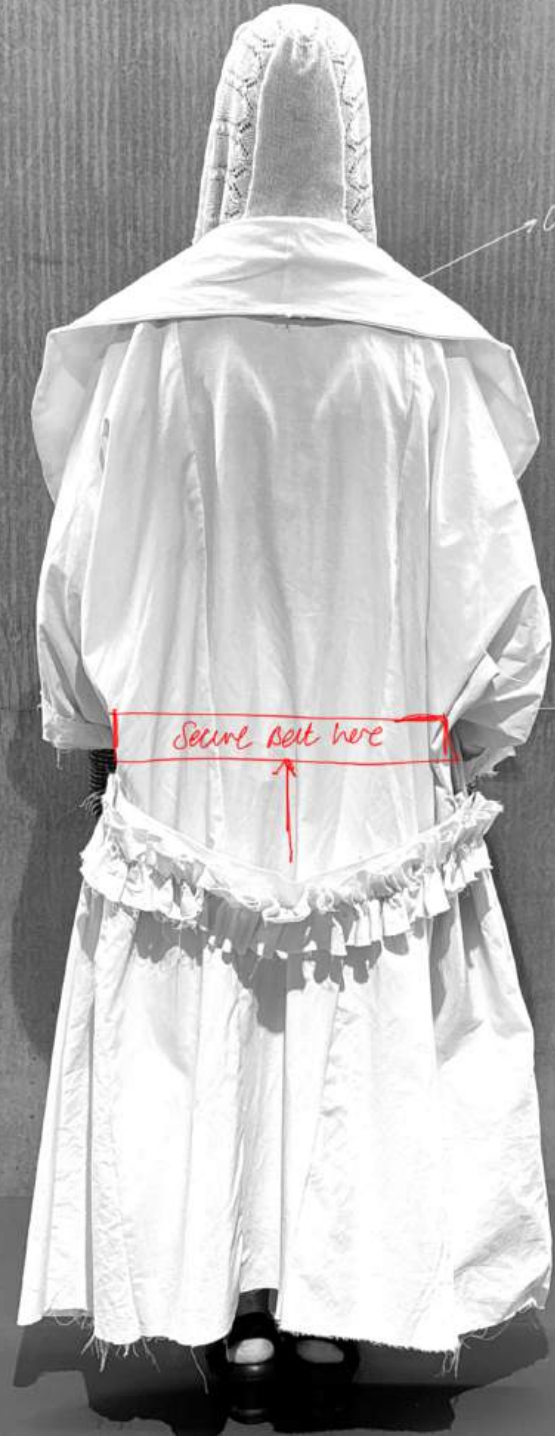
curved collar instead of peaked like blazer.



draping over collar to resemble gown.



extend the hemline so it falls close to the floor but does not drag.



collar could maybe be embellished?

Secure belt here

Belt needs to be fastened to the body of coat.



knit hooded scarf w/ cross & dot coat for look 1



Gloves paired with coat too? Or just silk w knit accessory?



LOOK: 1

pink/berige
cotton drill

knice PVC



preaching coat



church dress



Hooded lace
knitted scarf
(Chanel collaboration)

REFERENCES:



Thrust Developments
for look 02.



Drawstring late
elasticated waist
to develop further.

What clothing rebels against the
Christian standards = how dressed with,
how can = subvert sexuality modesty?



The word white even has an h in it, imagine, a hidden letter,
white. And we let that pass, linguistically. What does it do to us,
that hidden letter, what (what) do we hide in that h, what hides in
the white? *

Toile knicker on toile trousers



Frill edge
circumferential pocket?



Styling knicker on trousers

Underwear as outerwear?

*Drapes from ecdysiastal
Christian garments.*





TROUSER TOILE

①



Keep the trousers
straight leg
& formal

Drapes too
funny for
trousers



Added volume
to side of trouser



① Draft pattern #1





red & black
pinstripe



Fit typical suit trousers
- pinstriped & waistband waist





Cost	Cost	Cost	Cost	Cost	Cost	Cost
29.99		€19.95	€19.95			€19.95
Width	Width	Width	Width	Width	Width	Width
140		140	140			140



ii shirt and trousers by
 iii rita Casanova and
 iv regina. Emma wears a
 v guernsey, shoes by Christian
 vi rat rights by Calzedonia.



Hair: Leszka von Neukirch • Make-up: Ann
 Nguyen • Photography assistant: Jaa Strövers •
 Models: Langua/Fin at The COO Agency and
 Emma Palster; at Mousa Models



COG AW 1995



Pattern, extend the trousers like culottes



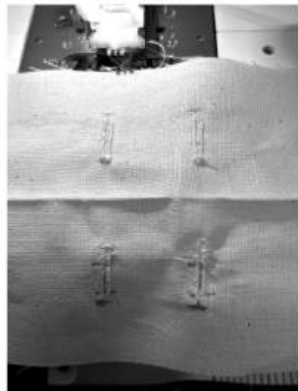
Please pleat enough at front, not at back.



Attach the pockets - deep pockets are common for women's trousers.



Top pocket on point of pocket down.



Create button holes for waistband to be fast. Waist rings.



Add waist band, elastic & drawstring.

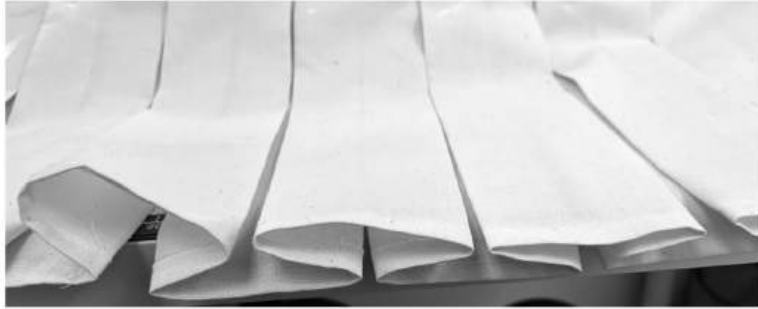


hem



Pleats pattern for back of hoodie.

woolie development
look 02



"the court of porcegrantes"

Pleats mimic pages of books, cards etc.



Insert pleats into back with run & fell seam



bottom row of hooded pleats



FABRIC

Black PVC

Great for its
transparent quality
& showing the
details of
construction.



elasticated
sleeve to
create cuff.

insert the hood



Small
pocket for
design +
functionality

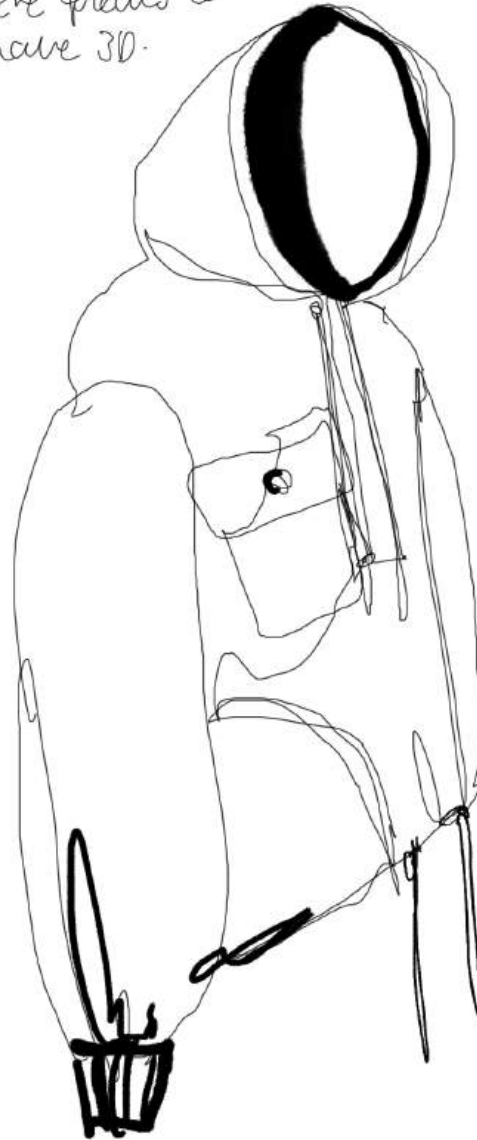
Pocket with
top stitching



the hood feels
evangelical &
cut-line.



Adding wire to
the hood &
the pleats to
have 3D.



✳

Poncho pattern mimicking
clerical patterns.
Cutting shape over on the
ground



Layer up the hoodie
with another cape
to create an actual
silhouette.



Cut length to
create cape



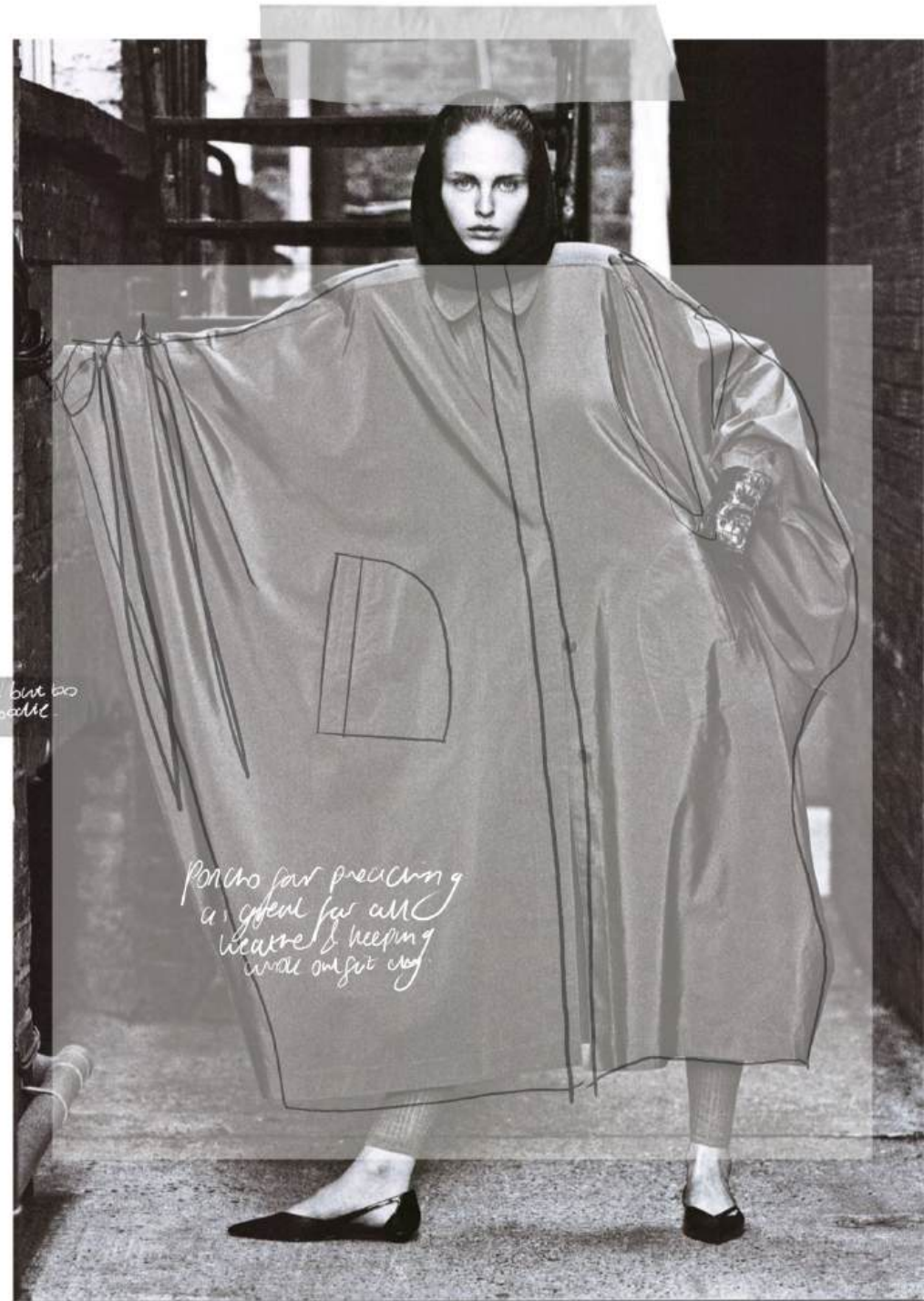
Zip closure on the
sleeves to wear over
shoulder or as
a jacket.



*draping with
sack from web site*



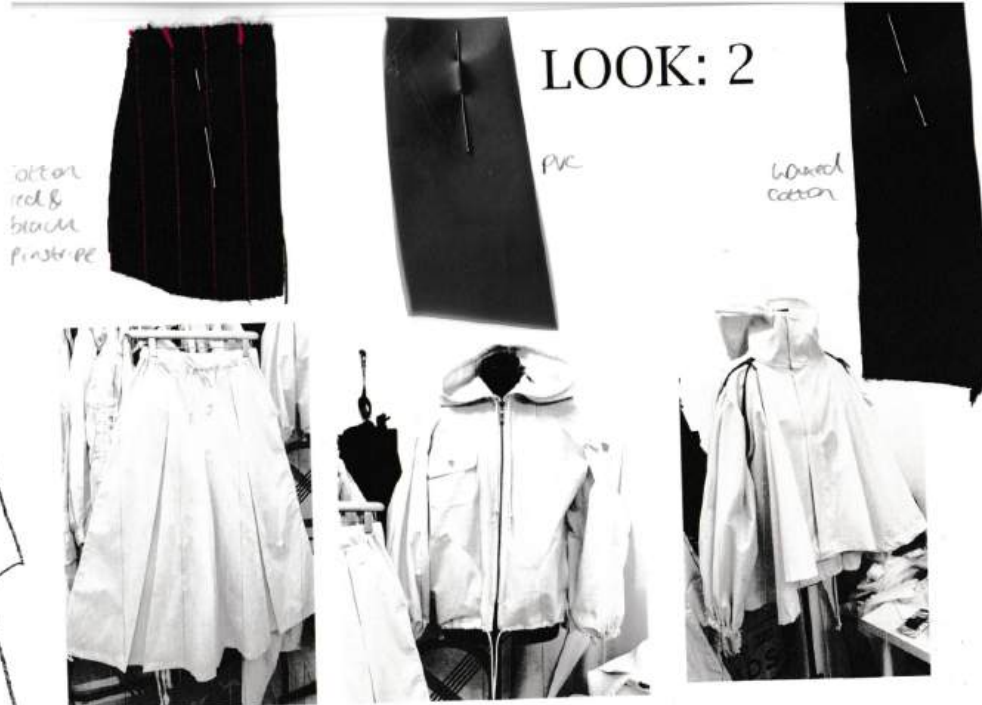
*Love the concept but too
long & hides hood etc.*



*Poncho for predicting
a gift for all
weathers & keeping
warm on your way*



NO buttons,
magnette snap
closure



LOOK: 2

cotton
red &
black
fin stripe

PVC

lined
cotton



3 shorter length
cottons w/
box pleat &
elasticated waist



Hoodie



funnel neck
windbreaker/
pachos

REFERENCES



Look # 2



Snip forewings
create smooth
waist

happy with
waists, they
be same.



Take out
the wire from
hood as it
will interfere with
the collar &
create a bubble



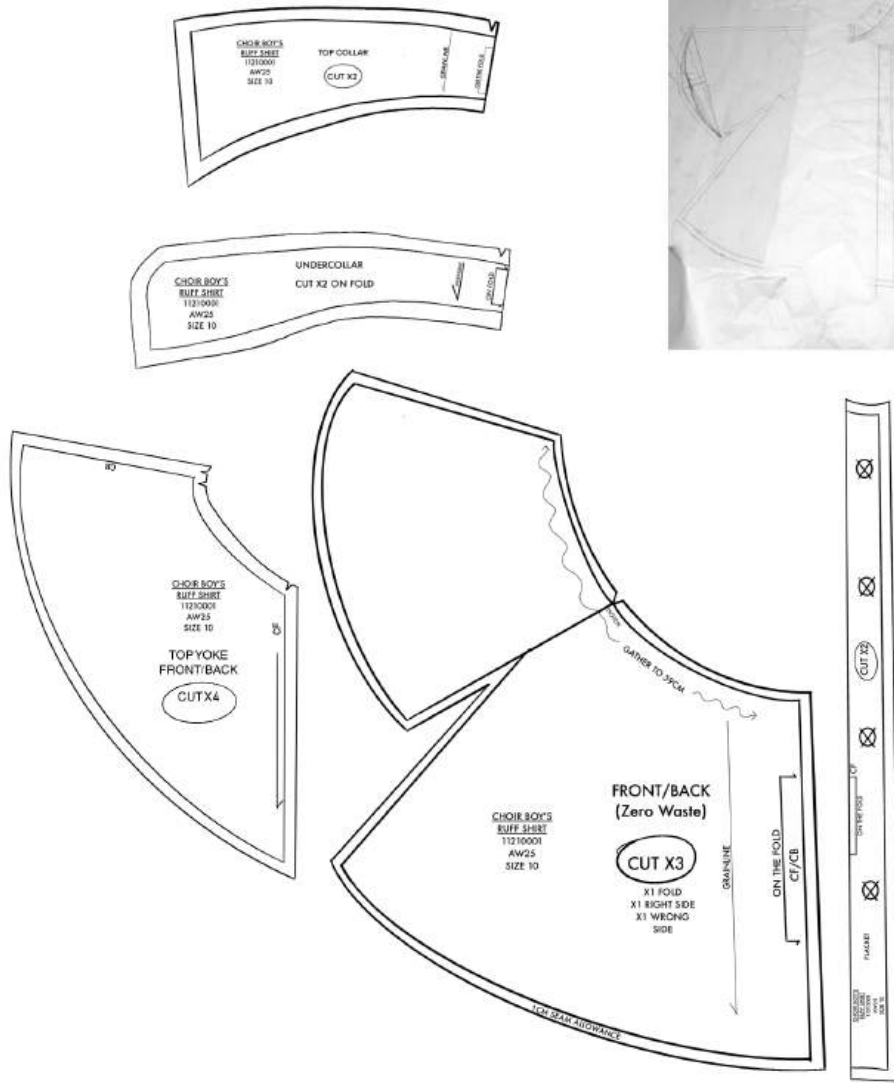
Smooth out
hood
pattern



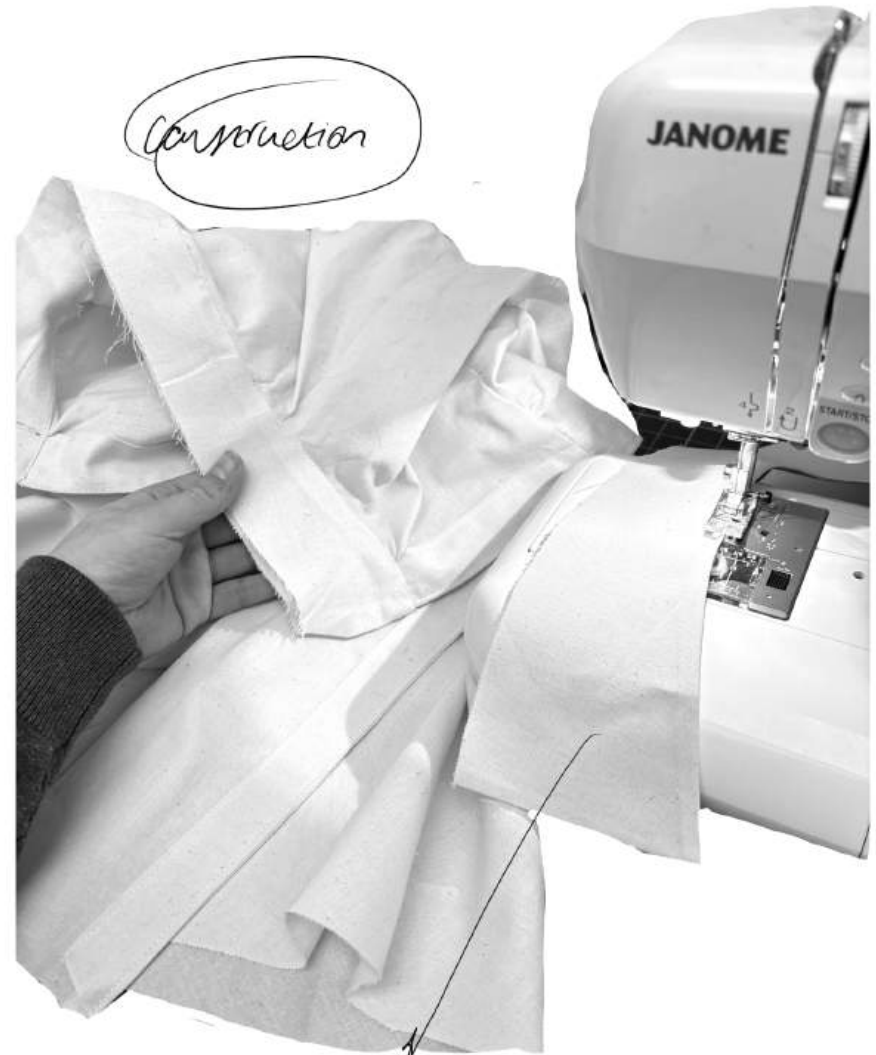
More drape
on back even,
one side too
long.



Pattern Draping



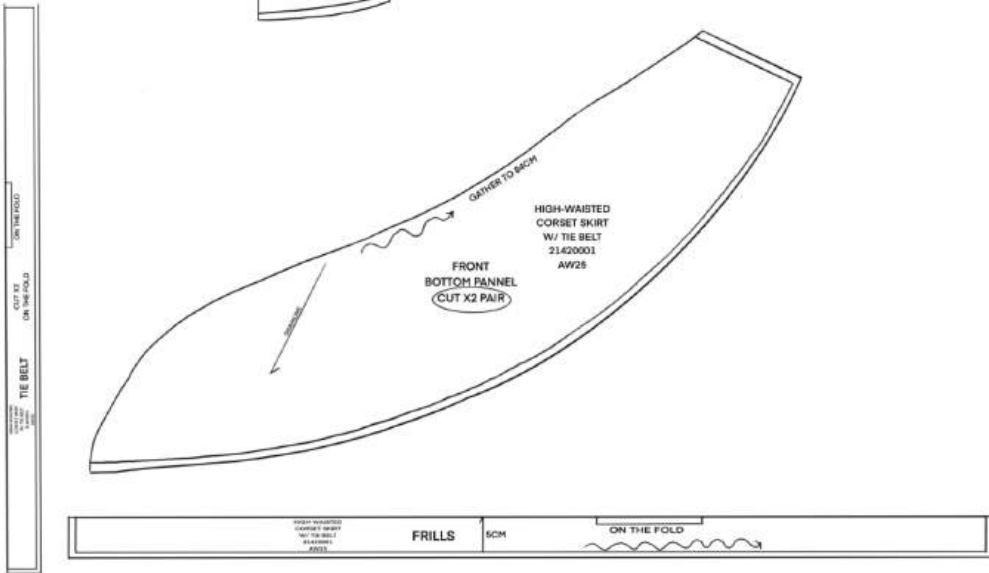
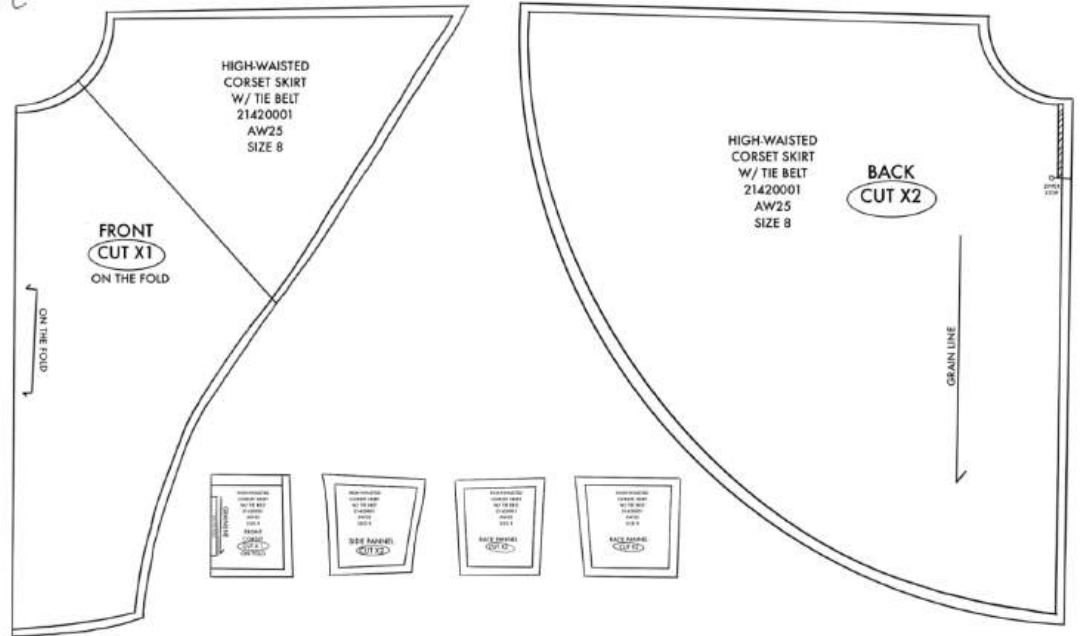
Construction



Making sure the collar & undercollar fit well, took a few attempts to perfect pattern.



Pattern
Tie Belt Skirt



*frill edge
1mm added*



*Black
duchess
satin*
*↳ too heavy,
switch to a
nylon for
lighter weight
fabric.*

LOOK: 3



white nylon
+ lace.

corset high waist shirt
w/ rasy beaded
pocket chains.

B&W
Cotton
Shirting



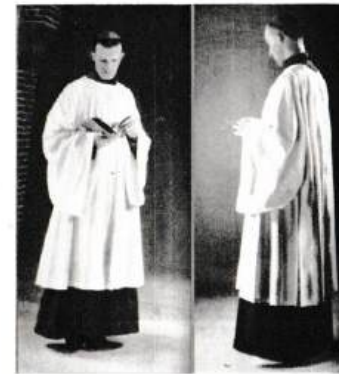
lace tie

Cotta shirt

REFERENCES



rasy



Look #3

Adjust collar
could
make bigger

bring in
size of
tie

extend top collar of
vest

beads
could come
out of pockets?

fill/ruffled
edge?



PRINT COLLABORATION
X KIERA JAMIESON



Tights print inspired by
church stained glass
& apocalyptic imagery.



Scan taken from 14th
Century Gothic style
paintings.

Albrecht Dürer
(1498)

First test of tights
by Kiera Jamieson



FINAL LINEUP

(L1)

(L2)

(L3)

look (1)

- * Church Dress
- * Tights
- * Hooded Scarf
- * Coat

look (3)

- * Shirt
- * Tie
- * Skirt
- * Socks
- * ~~Gloves~~

look (2)

- * Hoodie
- * Trousers
- * Poncho
- * Gloves?



Front view



Side view



Back view



MEA:WILKS
FINAL LINEUP



LOOK 01

- Ministry Coat
- Holy Hooded Scarf
- Stained Glass Window Tights
- Church Dress



LOOK 02

- Preacher's Poncho
- Knit Cross Stocking Socks
- Pinstripe Drawstring Suit Trousers
- Frill Hoodie



LOOK 03

- Lace Tie
- Choir Boy's Ruff Shirt
- Corseted Tie Belt Skirt
- Knit Gloves

MEA:WILKS

EXTENDED LOOKBOOK



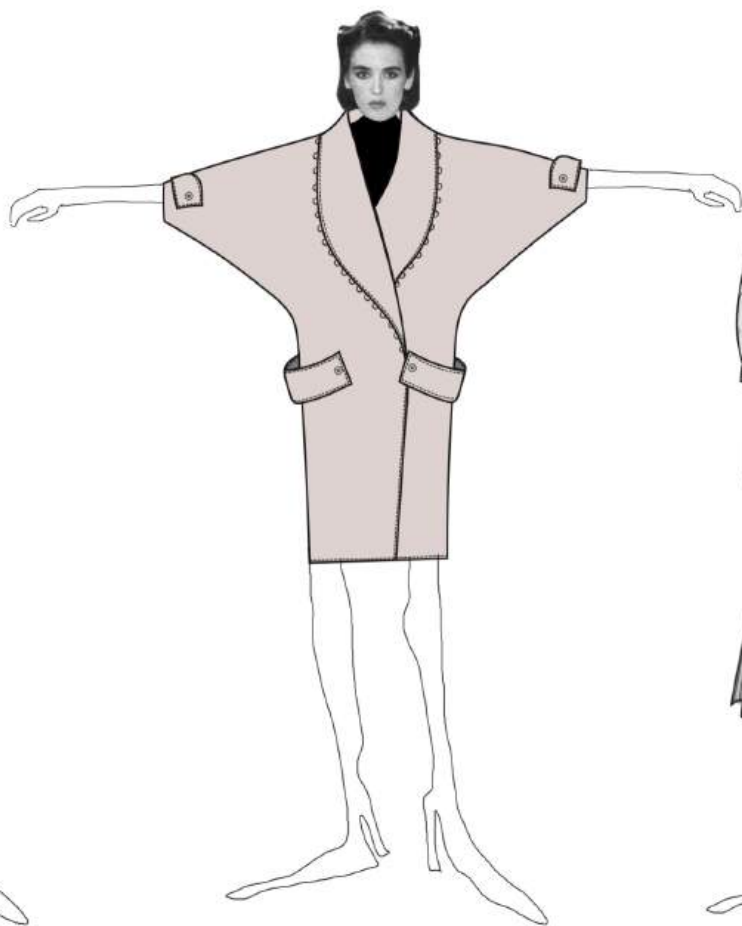
MEA:WILKS

EXTENDED LOOKBOOK



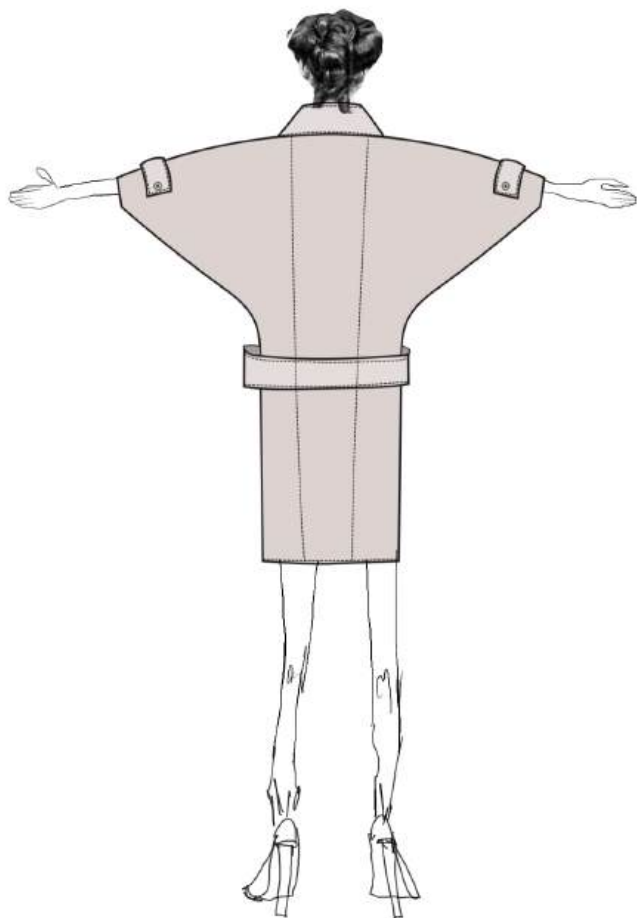
MEA:WILKS

EXTENDED LOOKBOOK



MEA:WILKS

EXTENDED LOOKBOOK



RANGE PLAN

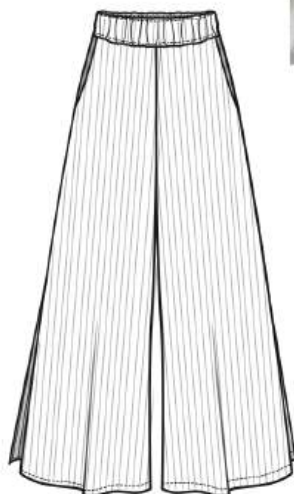
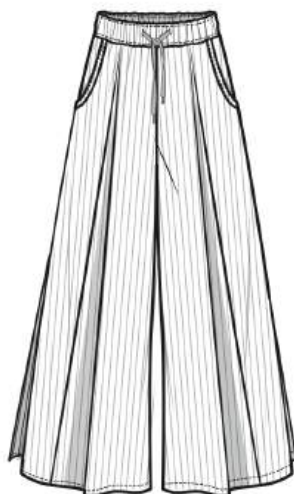
CHOIR BOY'S RUFF SHIRT
11210001
100% COTTON POPLIN
BLACK/WHITE STRIPE



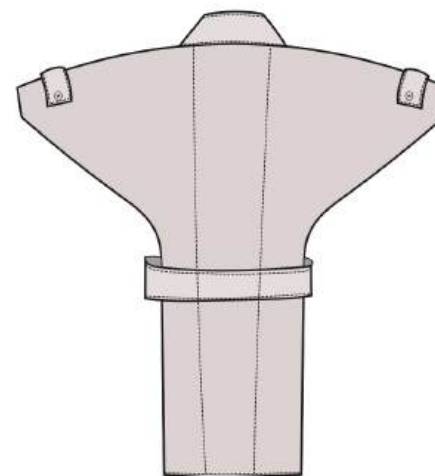
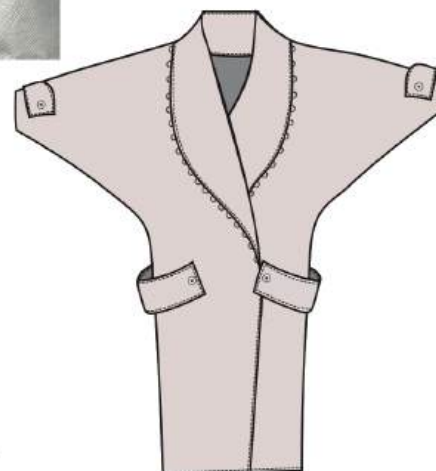
FRILL HOODIE
11110001
100% VINYL PVC
FROSTED MATTE BLACK



WIDE LEG DRAWSTRING TROUSERS
21320001
100% POLYESTER
RED/BLACK PIN STRIPE



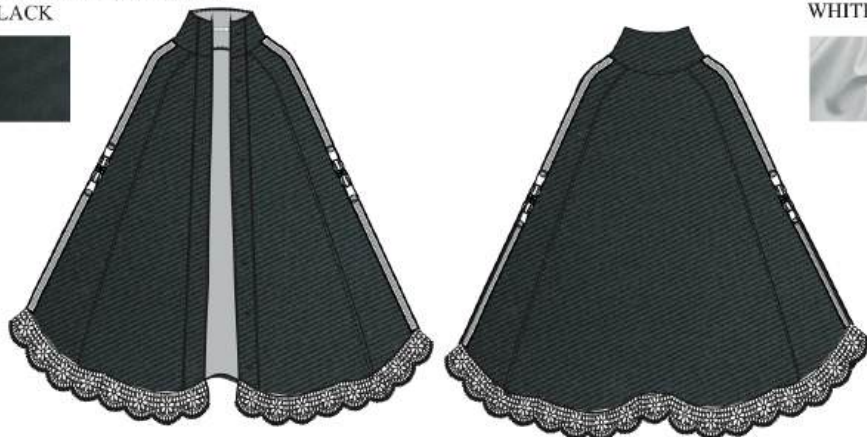
MINISTRY COAT
21110001
100% COTTON DRILL
LIGHT GREY DRAB



MEA:WILKS

RANGE PLAN

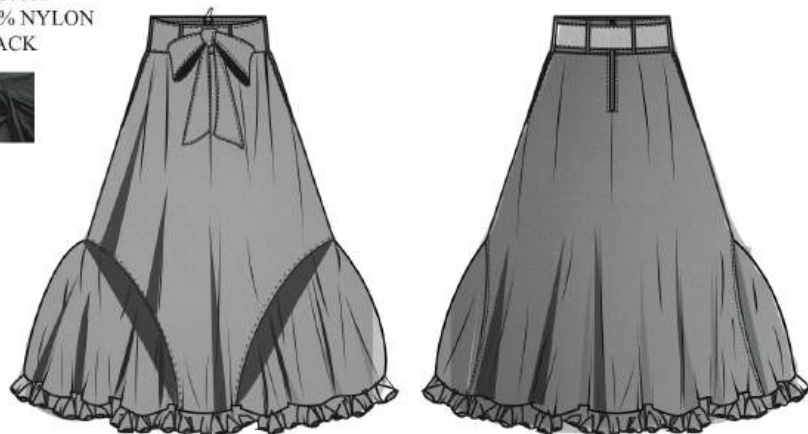
PREACHER'S PONCHO
11110001
100% COTTON (WAXED)
BLACK



CHURCH DRESS
21410001
100% PVC
WHITE



HIGH-WAISTED CORSET SKIRT
21420001
100% NYLON
BLACK



STAINED GLASS TIGHTS
23320001
85% POLYAMIDE
15% SPANDEX
80 DENIER
WHITE



MEA:WILKS

RANGE PLAN

CULT PARTY T-SHIRT
11210001
100% ORGANIC COTTON
BLACK



APOCALYPSE T-SHIRT
11210002
100% ORGANIC COTTON
WHITE



CHURCH PUMPS
22620001
100% LEATHER
WHITE



MESSANGER BAG
13620001
50% LEATHER
50% COTTON POPLIN
WHITE/BLACK STRIPE



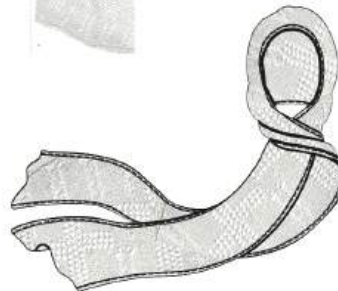
OXFORDS
22620002
100% LEATHER
WHITE



CULT LEADER T-SHIRT
11210003
100% ORGANIC COTTON
WHITE



HOLY HOODED SCARF
23130001
100%
IVORY/CREAM



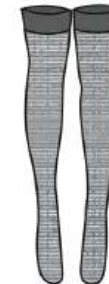
LACE TIE
23610001
100% POLYESTER
IVORY/WHITE



FINGERLESS KNIT GLOVES
21630001
25% POLYESTER
25% LAMBSWOOL
50% COTTON
WHITE/CREAM/RED



KNIT CROSS STOCKINGS
21620001
70% COTTON
30% POLYESTER
WHITE/BLACK



MEA:WILKS

MEA:WILKS

RANGE PLAN

MESH POLKA BLOUSE
211210001
100% POLYESTER
BLACK POLKA



LACE BLOUSE
211210002
100% POLYESTER
WHITE



PVC ROBE
211210001
100% VINYL
FROSTED MATTE BLACK



DRAPED TROUSERS
21320002
100% COTTON DRILL
BLACK

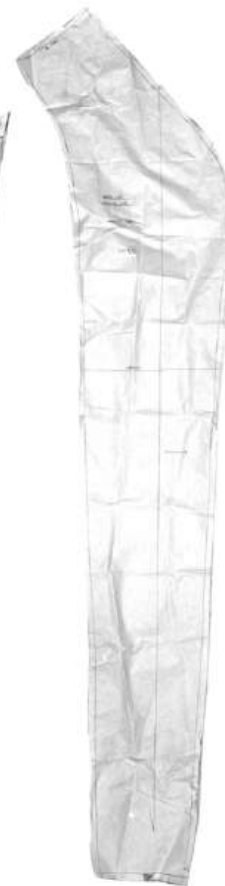
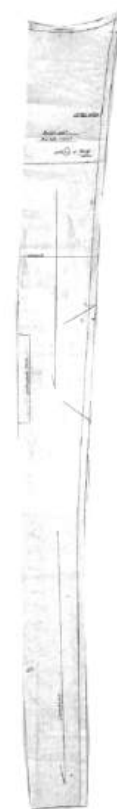
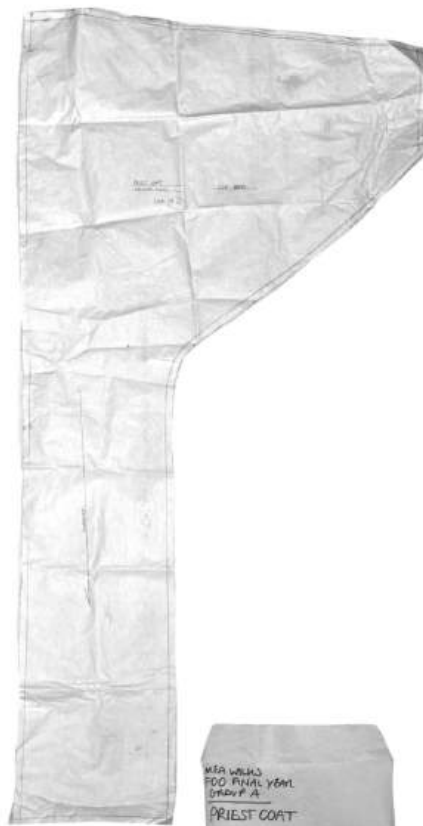
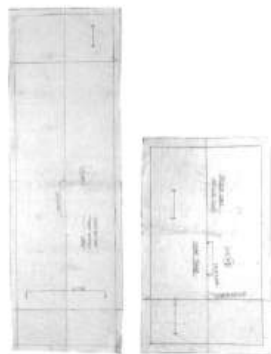
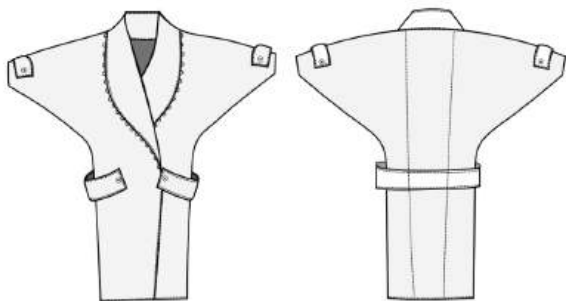


MEA:WILKS

MEA:WILKS

PATTERN

MINISTRY COAT
21110001
100% COTTON DRILL
LIGHT GREY DRAB



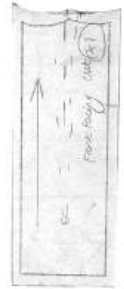
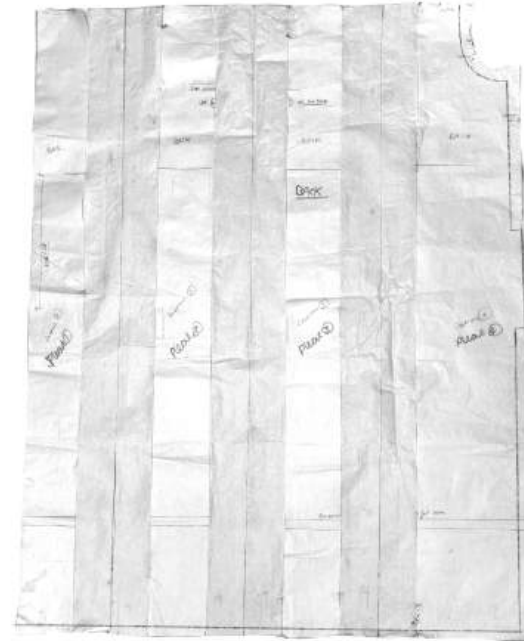
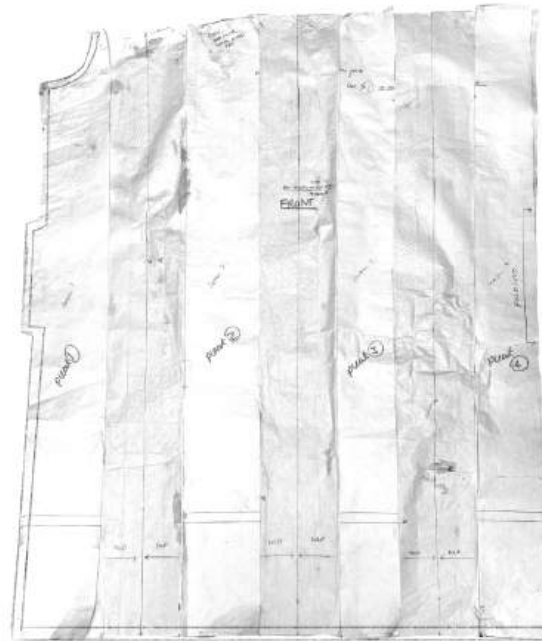
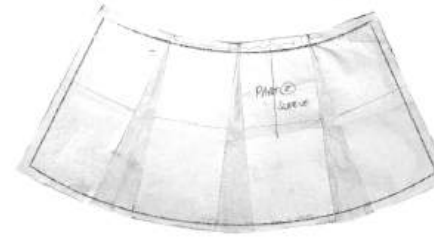
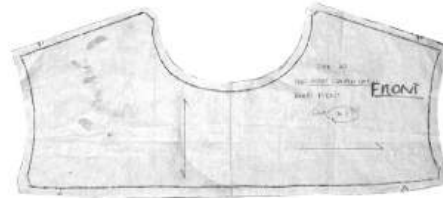
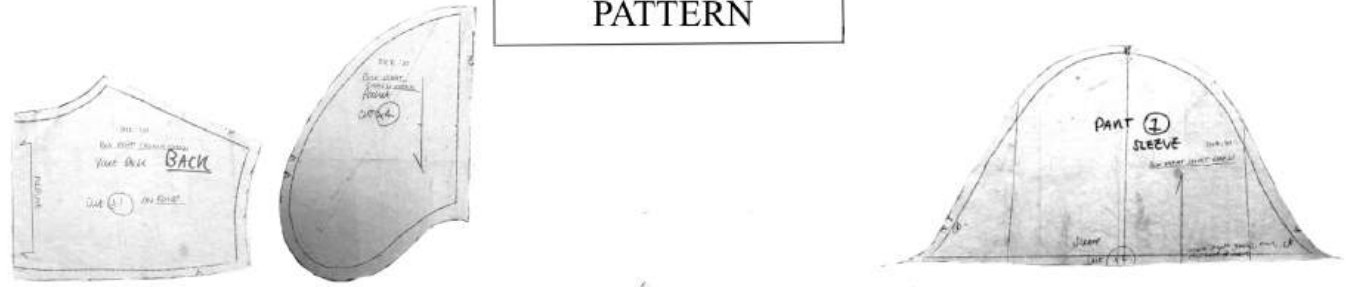
MEA:WILKS

MEA:WILKS

CHURCH DRESS
21410001
100% PVC
WHITE



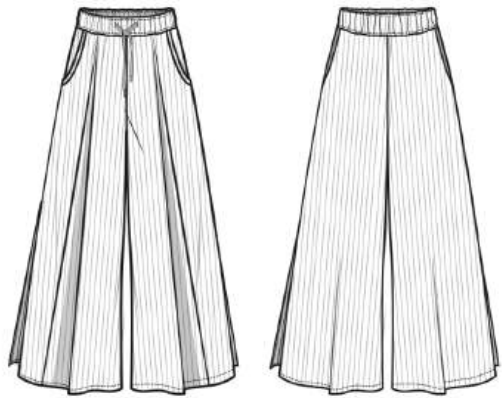
PATTERN



MEA:WILKS

MEA:WILKS

WIDE LEG DRAWSTRING TROUSERS
21320001
100% POLYESTER
RED/BLACK PIN STRIPE



PATTERN

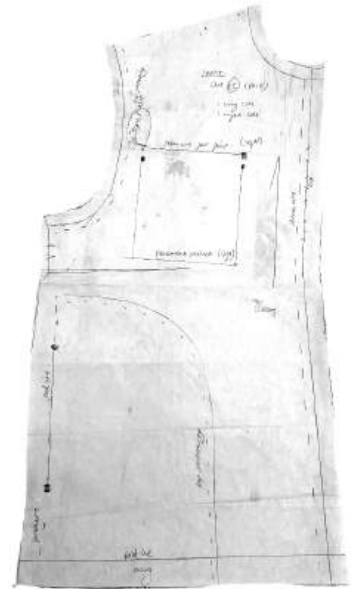
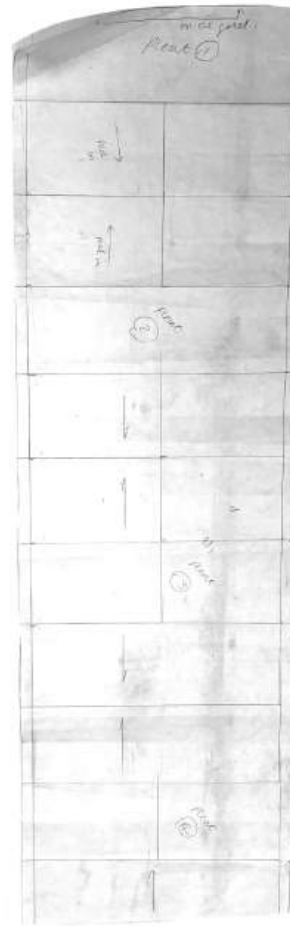
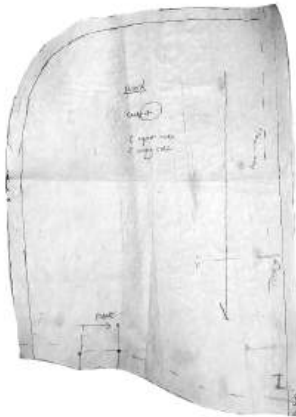
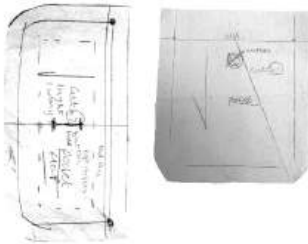
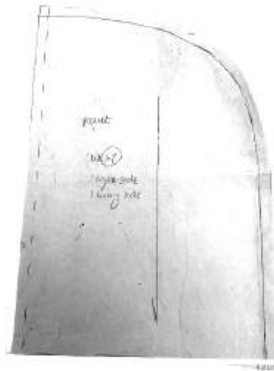


MEA:WILKS

MEA:WILKS

PATTERN

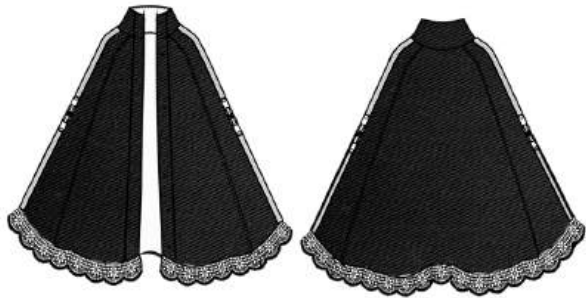
FRILL HOODIE
11110001
100% VINYL PVC
FROSTED MATTE BLACK



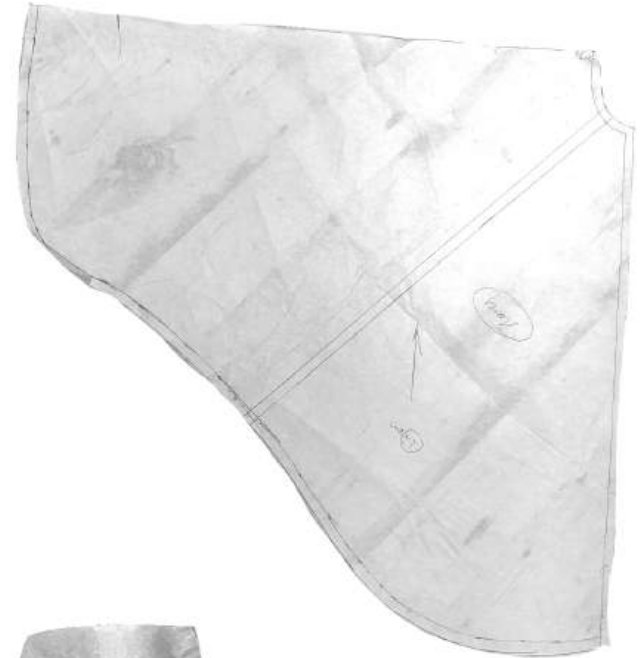
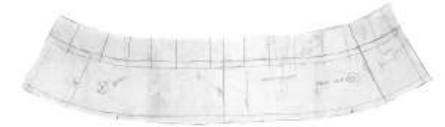
MEA:WILKS

MEA:WILKS

PREACHER'S PONCHO
11110001
100% COTTON (WAXED)
BLACK



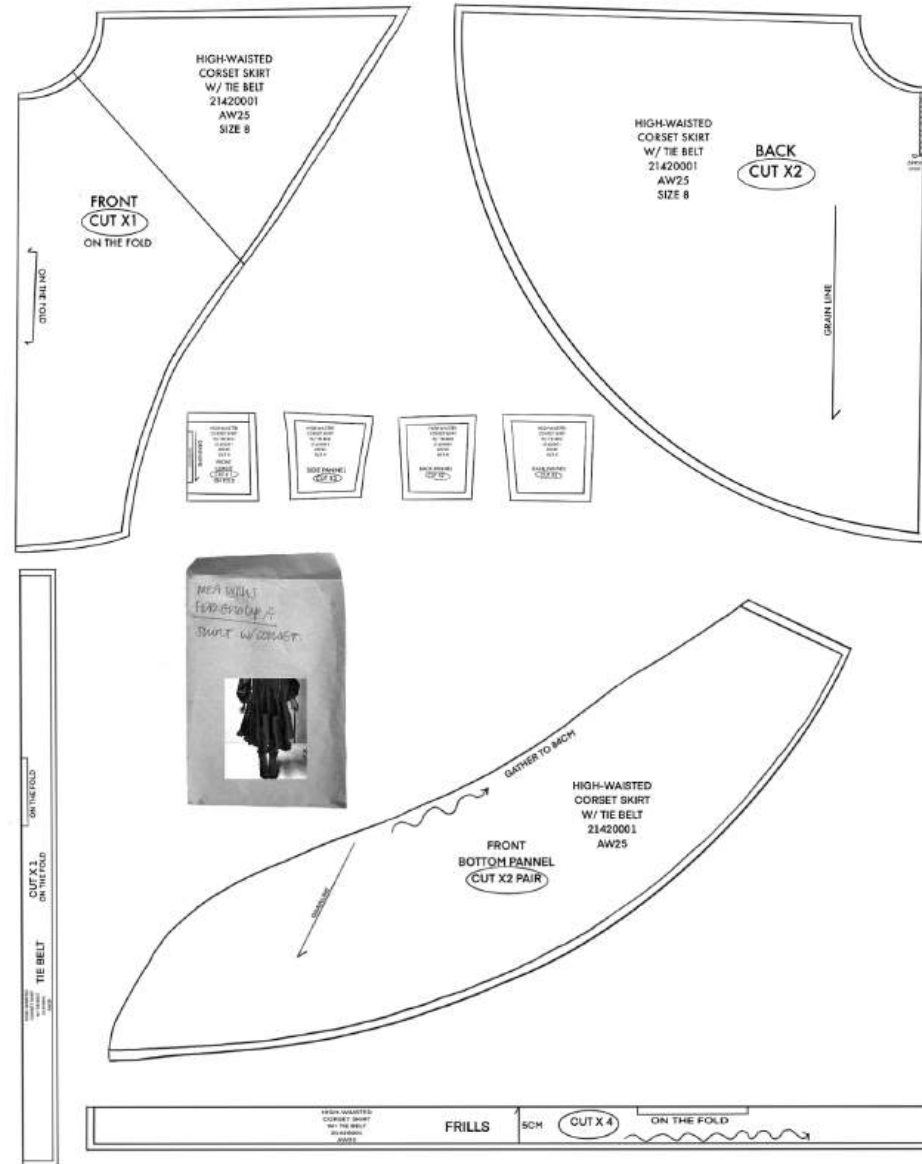
PATTERN



MEA:WILKS

MEA:WILKS

PATTERN



HIGH-WAISTED CORSET SKIRT
 21420001
 100% NYLON
 BLACK



MEA:WILKS

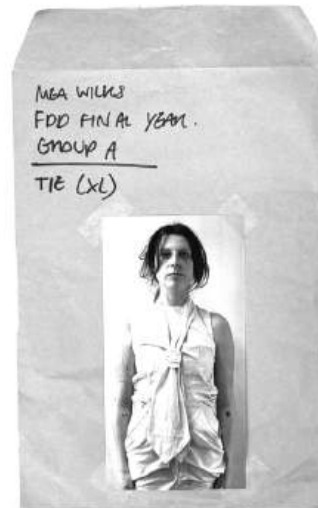
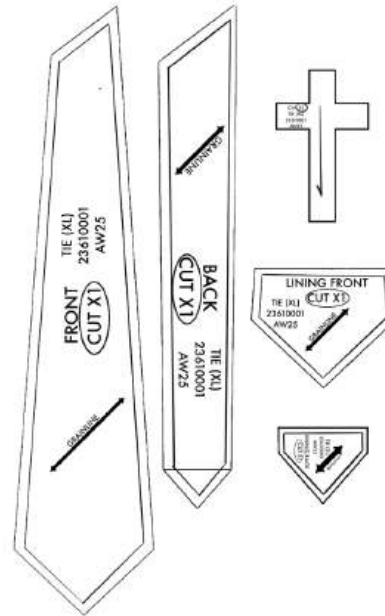
MEA:WILKS



LACE TIE
23610001
100% POLYESTER
IVORY/WHITE



PATTERN



MEA WILKS
FDD FINAL YEAR.
GROUP A

TIE (XL)

MEA:WILKS

MEA:WILKS

MINISTRY COAT



CHURCH DRESS



Holding last trim to edge of seam.



*Downstitch holes PUL
w/wo stiff
garters.*



FRILL HOODIE



Testing seams on PVC



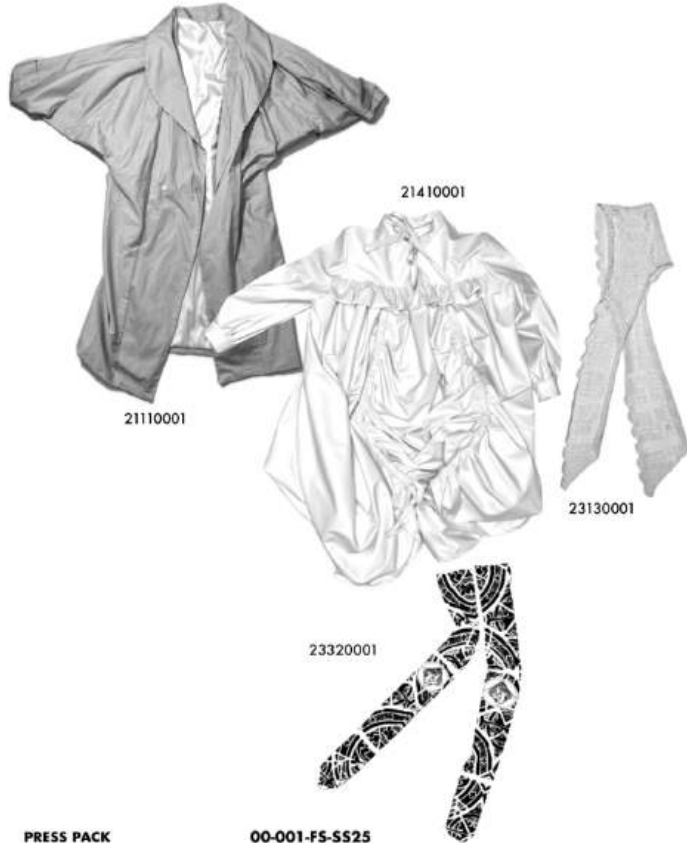
PREACHER'S PONCHO



Back

As shown: Holy Hooded Scurf by MEA:WILKS
 X Chanel T'san, Church Dress and Stained
 Glass Window Tights by MEA:WILKS

LOOK ONE



PRESS PACK
 Name
 Collection Name

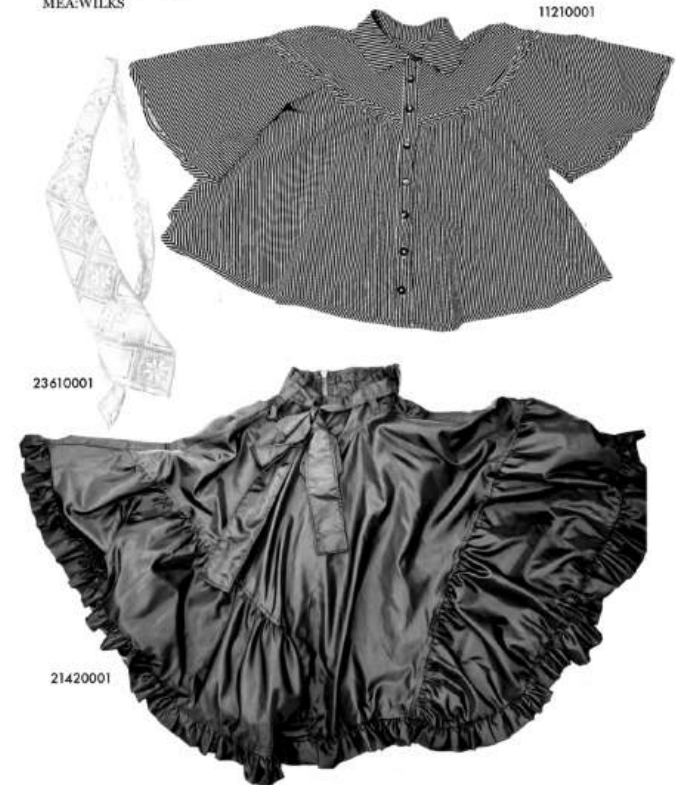
00-001-FS-SS25
 Mea Wilks
 Knock Knock

LOOK TWO



AS SHOWN: Preacher's Poncho,
 Frill Hoodie, Pinstripe Elasticated
 Suit Trousers, Knit Gloves

LOOK THREE



AS SHOWN:
 Lace Tie, Choir Boy's
 Ruff Shirt and High
 Waisted Corset Skirt by
 MEA:WILKS

LOOKBOOK





MEA:WILKS



MEA:WILKS



