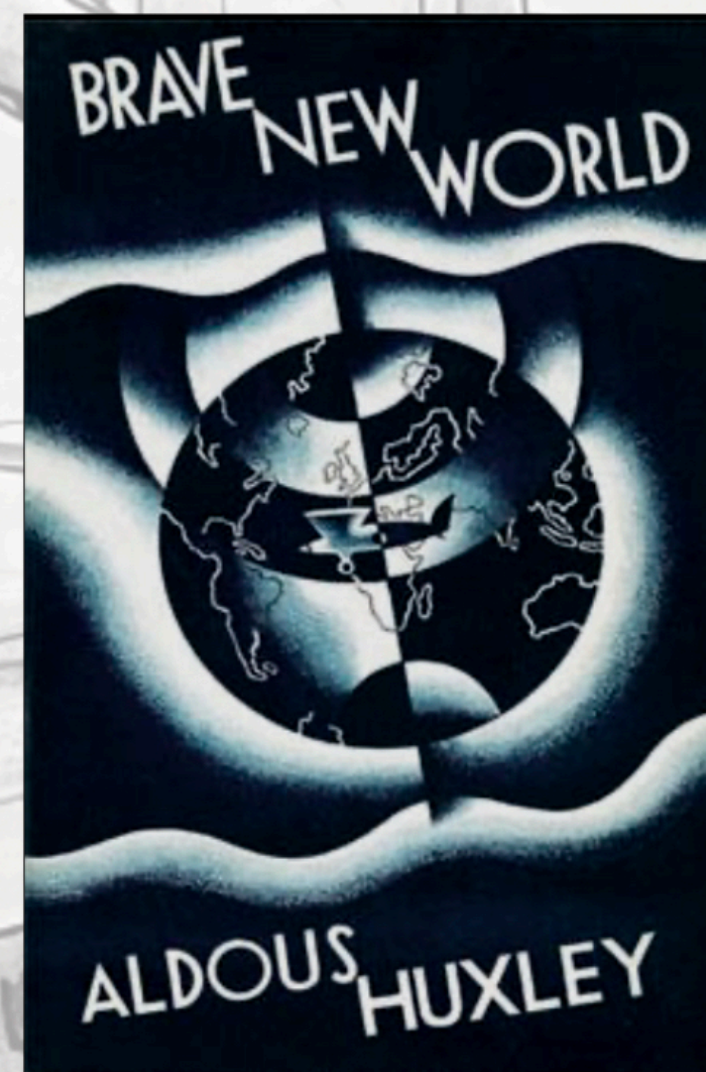


# DYSTOPIA

This collection is about my own dystopian story inspired by "Brave New World" by Huxley. I created a futuristic world where the surface of the Earth is uninhabitable due to radioactivity and mankind has yet to discover another habitable planet in the universe. Humans build a new Noah's Ark in the air. Humans are divided into two classes. The upper class suiting up and have all new technology and keeping searching for a new planet to survive. The lower class is dressed in rags and has to wear equipment to get down to the surface to search old resources in ruins for running the new Noah's. The fictionalized story has a post-apocalyptic feel and tells us to be wary of the future.

Metal making was really important in my craft journey. I tried to use furniture connectors to attach garments instead of buttons. I also focus on can art for sample making. I aim a worn and tattered look for lower class characters. And tailored jackets and high quality fabrics will represent upper class. The whole collection will be a fusion between upper class and lower class.



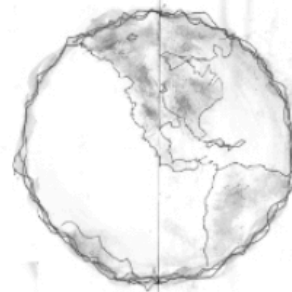
<<Brave New World>>  
by Aldous Huxley



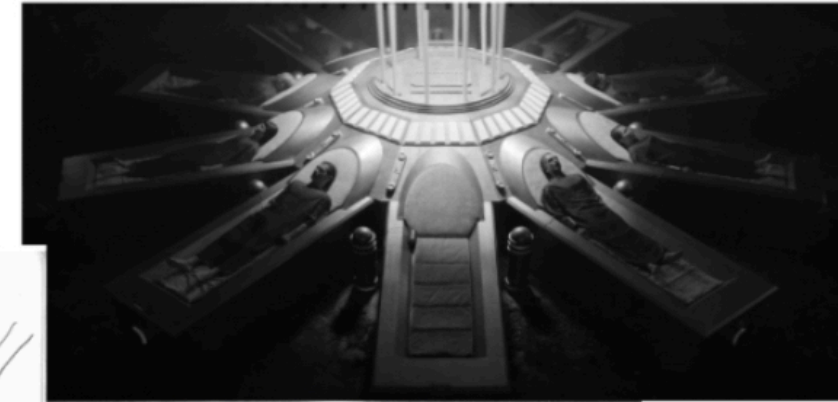
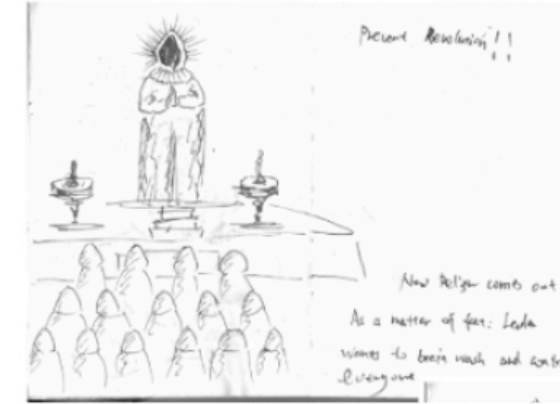


In the future society, Humans still not find a new planet to live.  
There are ruin and radioactive creature on earth. So human build  
a new Noah in the air. People divided into 2 classes, top class  
focus on running new Noah and keep finding new planet. Lower class need  
to work equivalent to the ground so find resources.

Floating Noah



In the future  
Humans help  
still not find  
a suitable planet  
to survive.

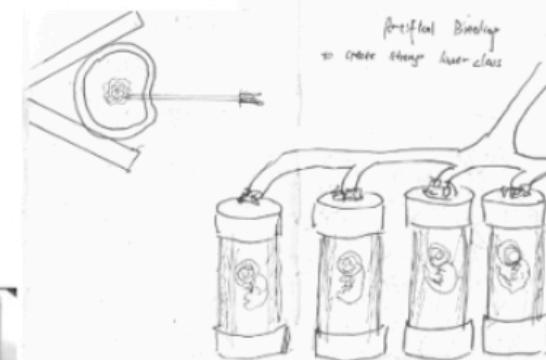


New Religion  
may come up



Ruins  
On the planet

Humans built a new Noah's Ark  
in the air, so protect creatures  
on the surface.  
And keep finding New planet  
to survive.



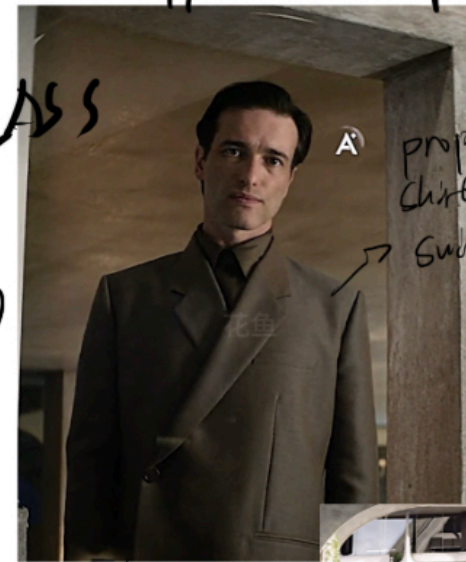
Every human was created for  
in vitro fertilization.  
They don't know their parents.  
Human beings are divided into  
two classes: higher class and lower class.



Upper class after

<< Brave new world >> series

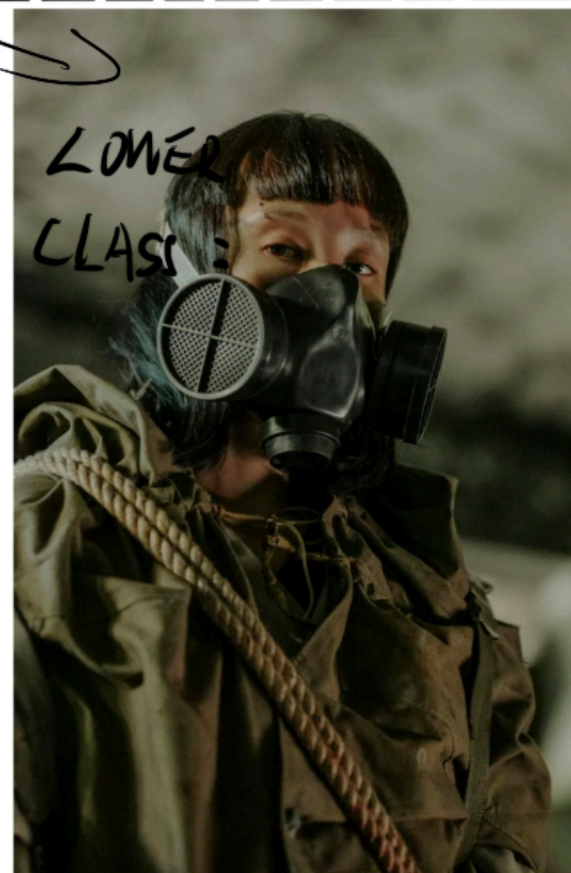
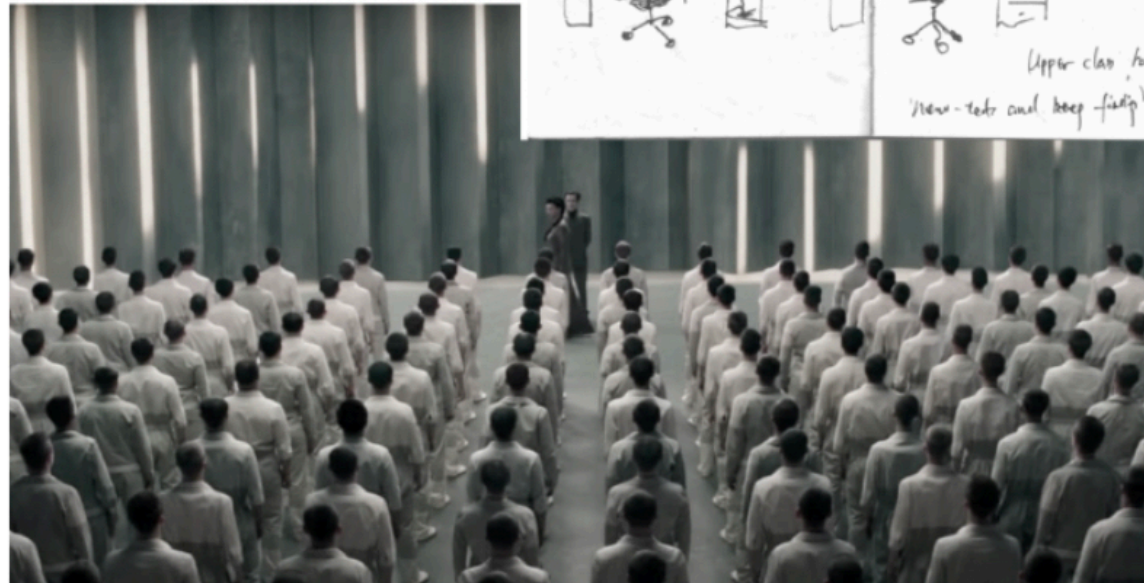
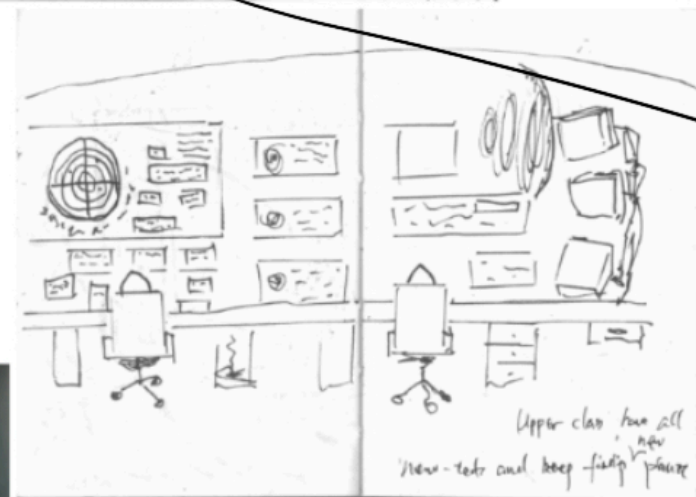
UPPER CLASS



proper  
clothes and  
suits

high  
heels  
jimmy

tailored



LOWER  
CLASS

• Poor, ragged,  
Born to do hard labor.  
Like wear equipment to  
go to the ground to  
find resources.

Lower class  
character definition



Lower class need wear masks  
and equipment to go  
down to the surface of the  
Earth to find old-time  
resources for making new  
Nucle Ark.



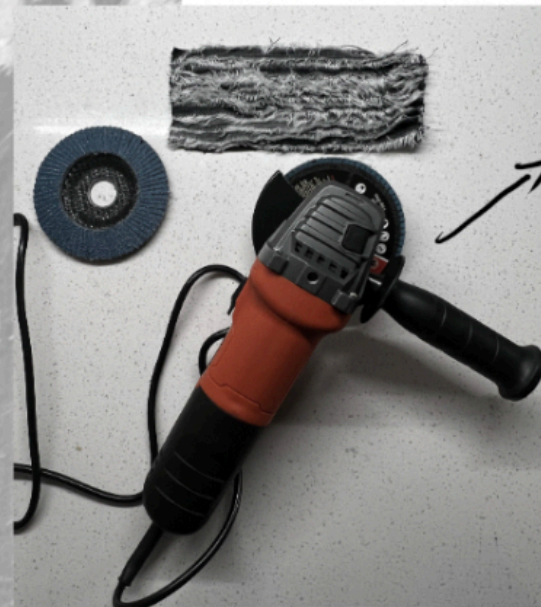




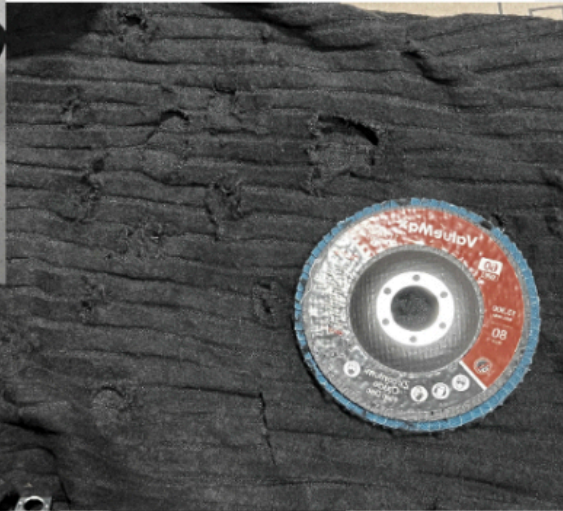
grinded after washing fabric



washed after grinding fabric



Grinder to damage fabric, creating rags



Pompey jersey

cloque



denim

cotton



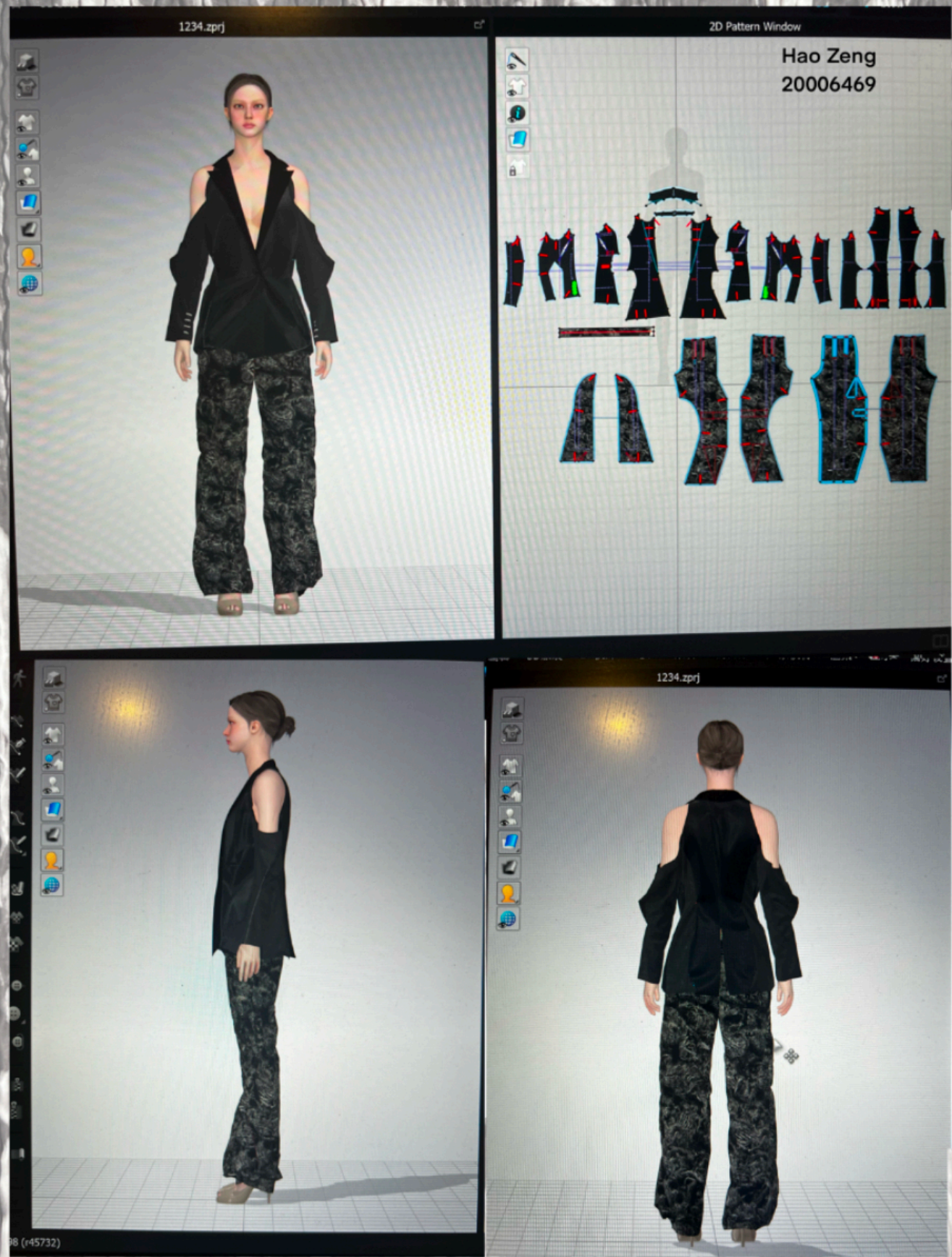
MAYBE UTOPIA DOESN'T EXIST?  
FUTURE WILL GET MORE AND MORE CHAOTIC)



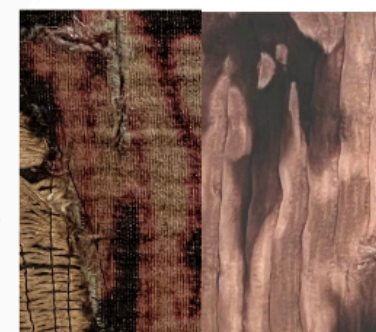
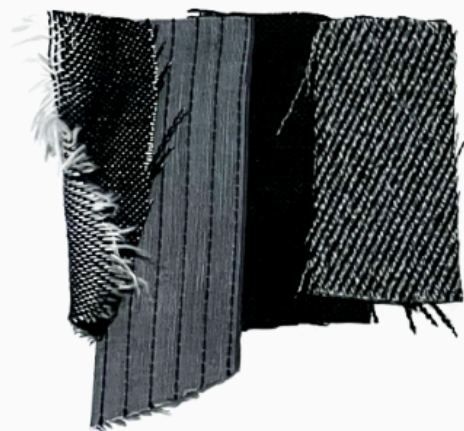
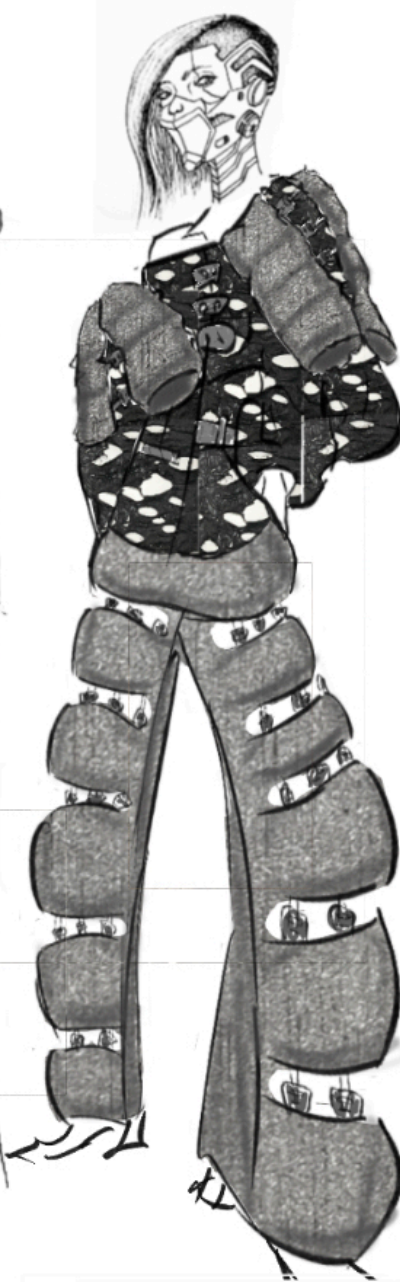




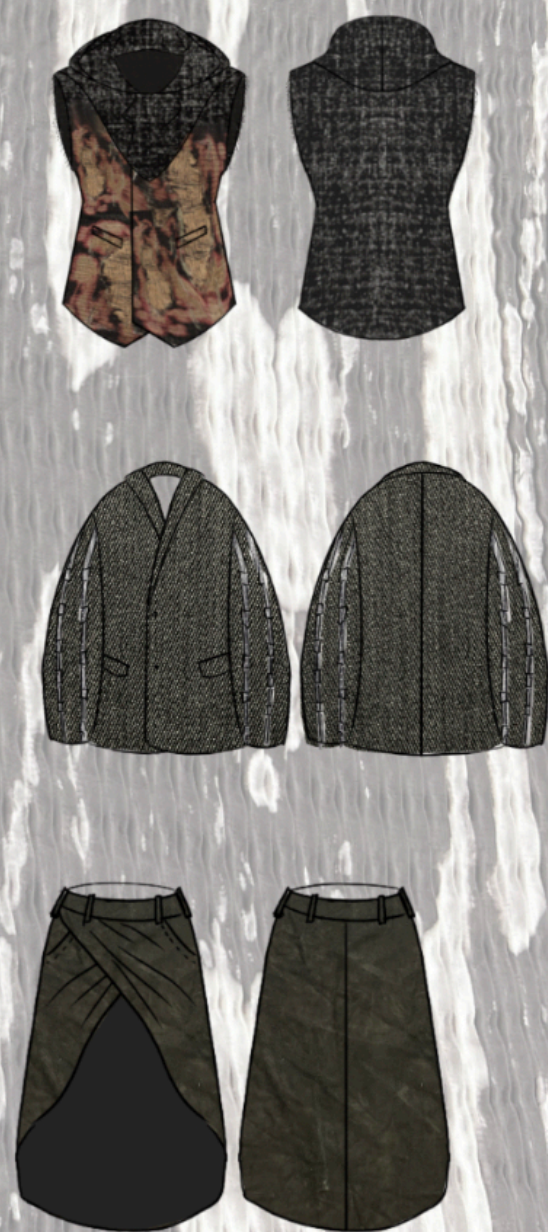
# CLO 3D Prototype











## Range Plan



## Final Garments

Lower class



Upper class



Lower class



Upper class





# PROMOTIONAL OUTCOME(CLO 3D&BLENDER)



LOWER CLASS



UPPER CLASS





Exercice 1.2

Faded Guit. - codicium  
Musk



**SISTEMA PARA FIJACIÓN DE TENERÍA**

**SECCIONES:**

- SECCIONES RECTAS:** SIC 90°, AIT 90°, AI 90°, SIC 150°, AIT 150°, AI 150°, SIC 135°, AIT 135°, AI 135°, SIC 165°, AIT 165°, AI 165°, SIC 180°, AIT 180°, AI 180°, SIC 225°, AIT 225°, AI 225°, SIC 270°, AIT 270°, AI 270°, SIC 315°, AIT 315°, AI 315°, SIC 360°, AIT 360°, AI 360°.
- SECCIONES ANGULARES:** SE 90°, SP 90°, SE 15°, SP 15°, SE 30°, SP 30°, SE 45°, SP 45°, SE 60°, SP 60°, SE 90°, SP 90°, SE 120°, SP 120°, SE 135°, SP 135°, SE 150°, SP 150°, SE 165°, SP 165°, SE 180°, SP 180°, SE 225°, SP 225°, SE 270°, SP 270°, SE 315°, SP 315°, SE 360°, SP 360°.
- SECCIONES DE FIJACIÓN:** UTP 90°, UH 90°, BI 90°, MN 90°, MRL 90°, ACR 90°, SCG 30°, SCG 45°, SCG 60°, SCG 90°, SCG 120°, SCG 135°, SCG 150°, SCG 165°, SCG 180°, SCG 225°, SCG 270°, SCG 315°, SCG 360°.
- SECCIONES DE FIJACIÓN DE TENERÍA:** AFI 90°, AFI 15°, AFI 30°, AFI 45°, AFI 60°, AFI 90°, AFI 120°, AFI 135°, AFI 150°, AFI 165°, AFI 180°, AFI 225°, AFI 270°, AFI 315°, AFI 360°.
- SECCIONES DE FIJACIÓN DE TENERÍA:** AFI 90°, AFI 15°, AFI 30°, AFI 45°, AFI 60°, AFI 90°, AFI 120°, AFI 135°, AFI 150°, AFI 165°, AFI 180°, AFI 225°, AFI 270°, AFI 315°, AFI 360°.
- SECCIONES DE FIJACIÓN DE TENERÍA:** AFI 90°, AFI 15°, AFI 30°, AFI 45°, AFI 60°, AFI 90°, AFI 120°, AFI 135°, AFI 150°, AFI 165°, AFI 180°, AFI 225°, AFI 270°, AFI 315°, AFI 360°.
- SECCIONES DE FIJACIÓN DE TENERÍA:** AFI 90°, AFI 15°, AFI 30°, AFI 45°, AFI 60°, AFI 90°, AFI 120°, AFI 135°, AFI 150°, AFI 165°, AFI 180°, AFI 225°, AFI 270°, AFI 315°, AFI 360°.
- SECCIONES DE FIJACIÓN DE TENERÍA:** AFI 90°, AFI 15°, AFI 30°, AFI 45°, AFI 60°, AFI 90°, AFI 120°, AFI 135°, AFI 150°, AFI 165°, AFI 180°, AFI 225°, AFI 270°, AFI 315°, AFI 360°.
- SECCIONES DE FIJACIÓN DE TENERÍA:** AFI 90°, AFI 15°, AFI 30°, AFI 45°, AFI 60°, AFI 90°, AFI 120°, AFI 135°, AFI 150°, AFI 165°, AFI 180°, AFI 225°, AFI 270°, AFI 315°, AFI 360°.
- SECCIONES DE FIJACIÓN DE TENERÍA:** AFI 90°, AFI 15°, AFI 30°, AFI 45°, AFI 60°, AFI 90°, AFI 120°, AFI 135°, AFI 150°, AFI 165°, AFI 180°, AFI 225°, AFI 270°, AFI 315°, AFI 360°.
- SECCIONES DE FIJACIÓN DE TENERÍA:** AFI 90°, AFI 15°, AFI 30°, AFI 45°, AFI 60°, AFI 90°, AFI 120°, AFI 135°, AFI 150°, AFI 165°, AFI 180°, AFI 225°, AFI 270°, AFI 315°, AFI 360°.

**CONJUNTO DE HERRAJES PARA CARNADAS**



Cape canis



Coke can  
to get the  
sample



✓ Create  
references  
on cars

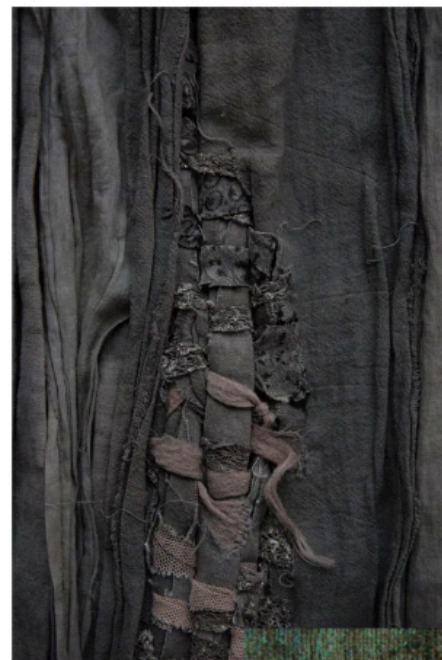




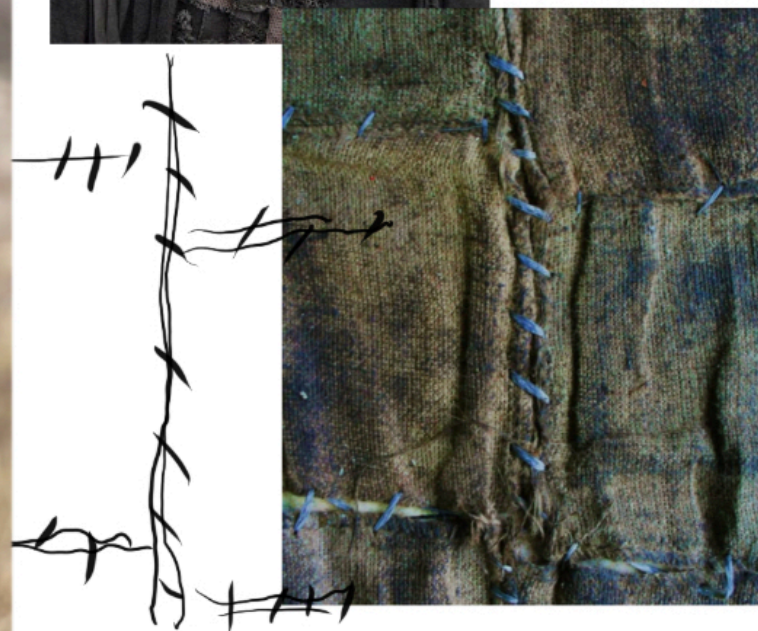


black

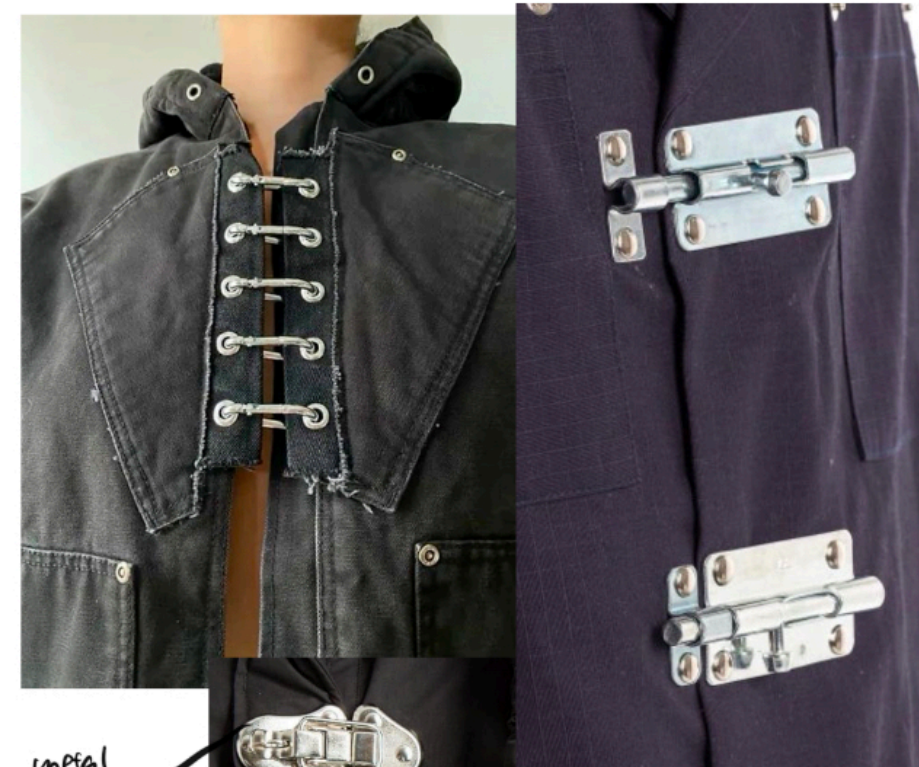
Finishing research



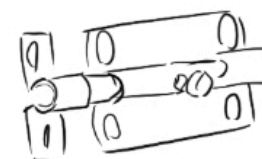
Raw  
Raged finishing



Ragged



metal  
connector  
instead of  
buttons







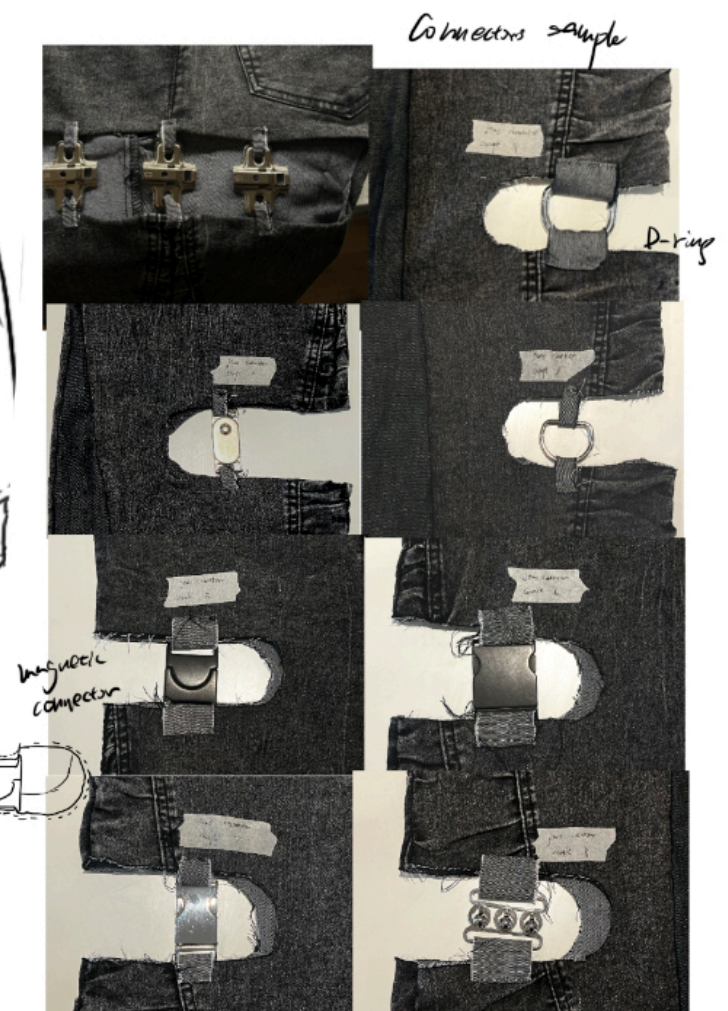




two ways  
for wearing

①

②





Inner

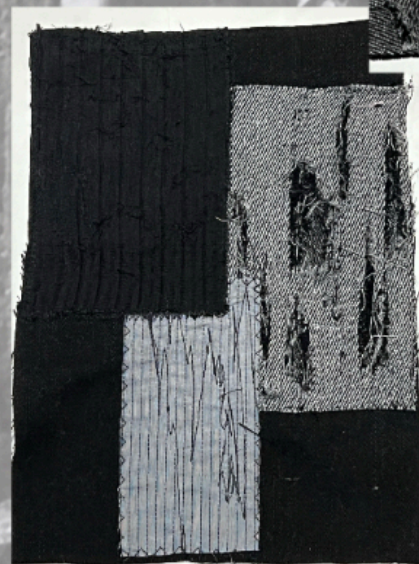


sweater



tight jockey

Fabric  
modification  
samples



T-shirt

width: 1/4"



light blue  
fine



black viscose cloth



50% Alpaca 21% cotton 16% ply  
12% bone 73% 50%  
15 8



black viscose cloth



width 1/4"  
black + yellow  
organic



black linen

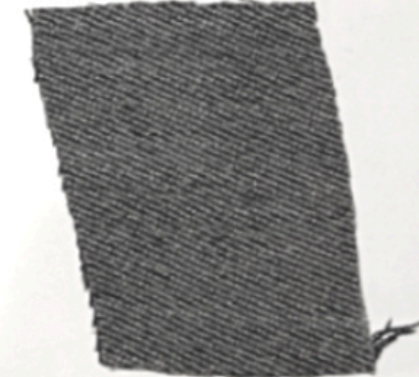


long sand  
100 cotton



stretch cotton wool cape

50% virgin wool 2% viscose  
width: 130



stretch wool fabric  
wool + viscose  
width: 130



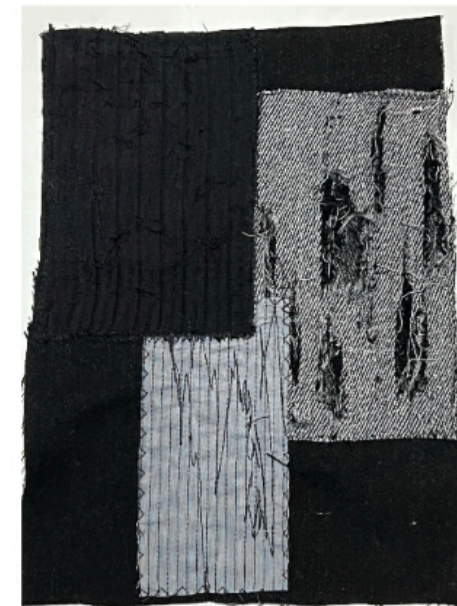
# All Fabric treatment



Bleached + Washed  
+ distressed



Bleached + Washed + distressed



padding + distressed



Washed + distressed



Bleached + distressed + Washed + dyed



Bleached + washed



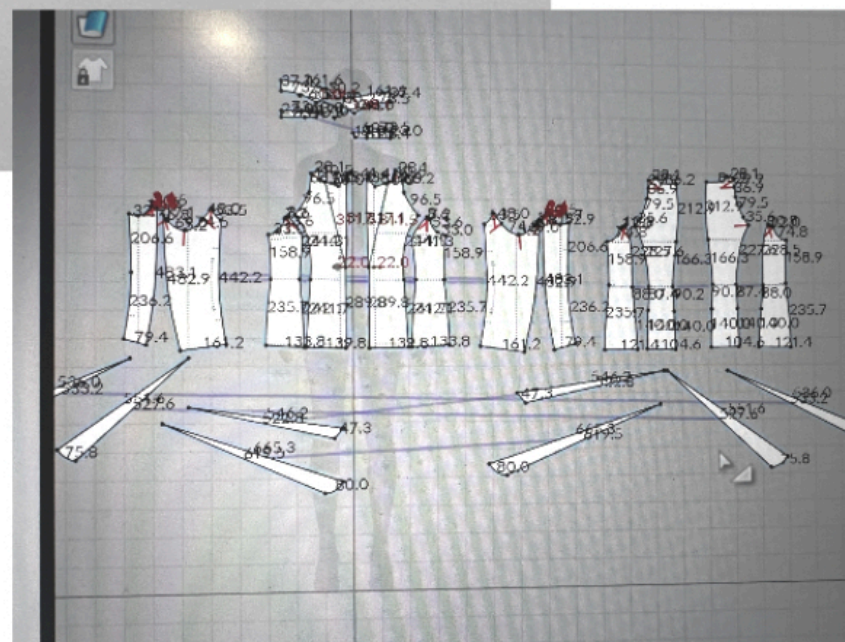
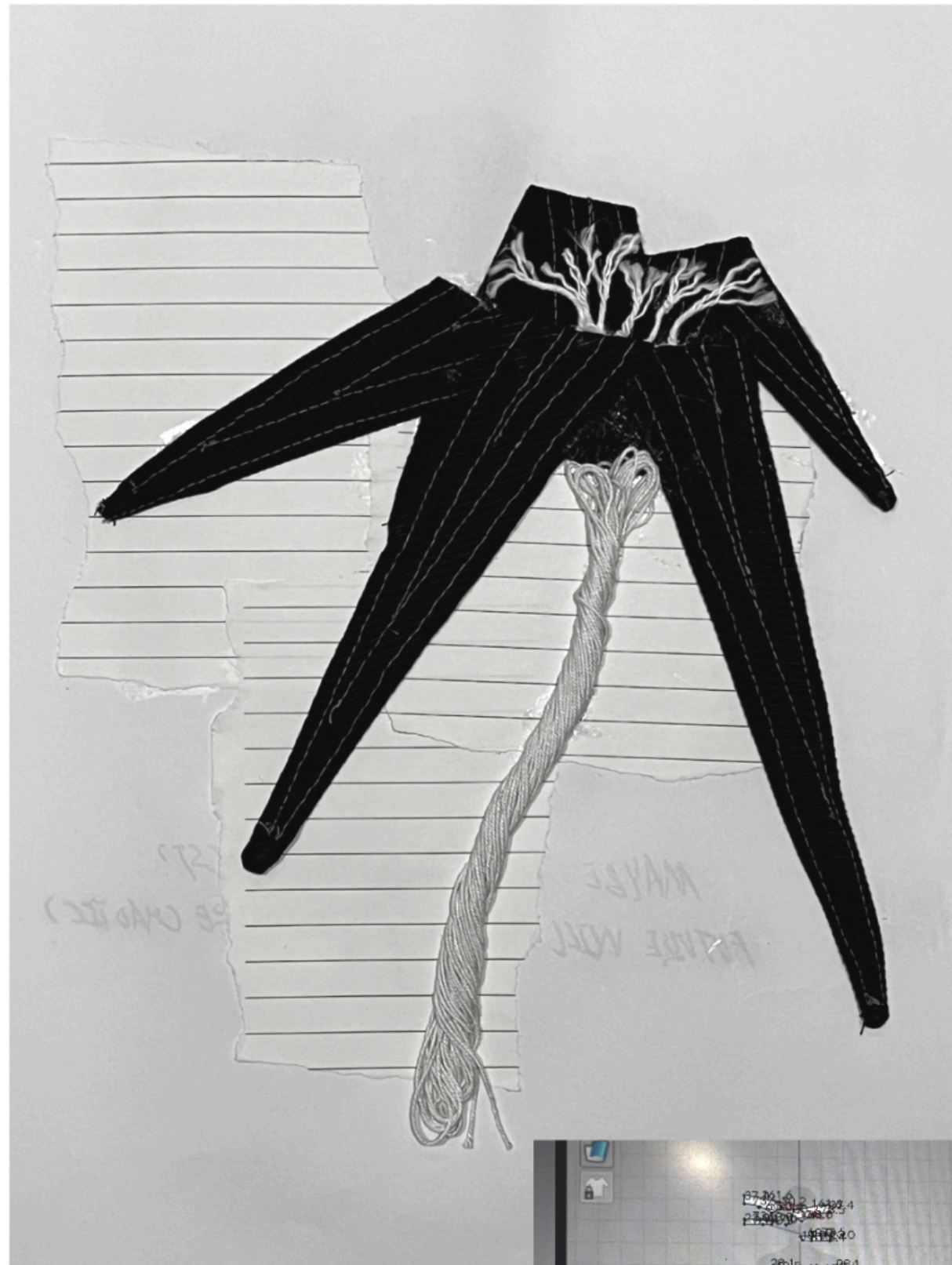
Washed + distressed



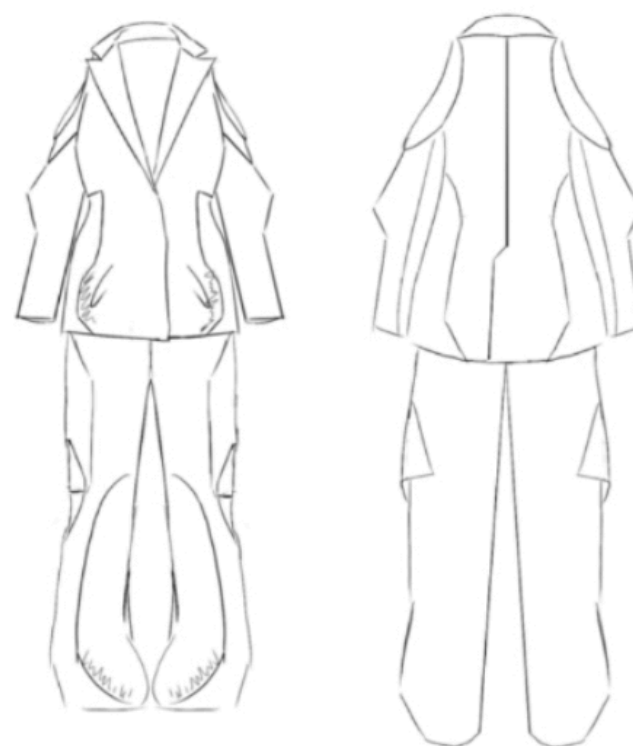
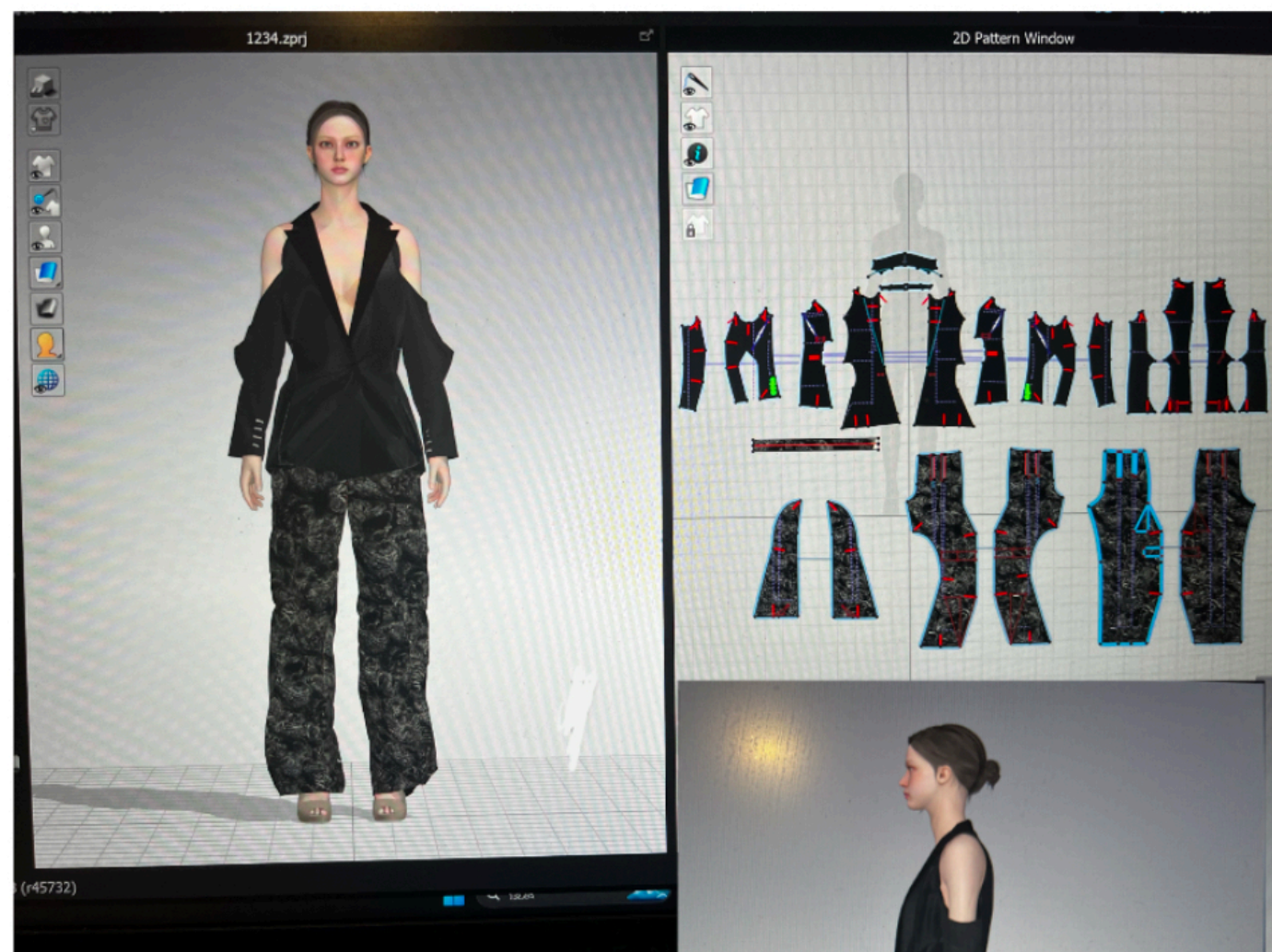
bleached + damaging



CLO sample





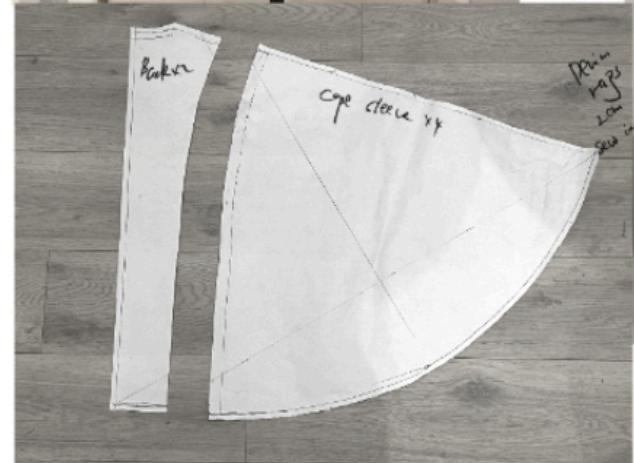
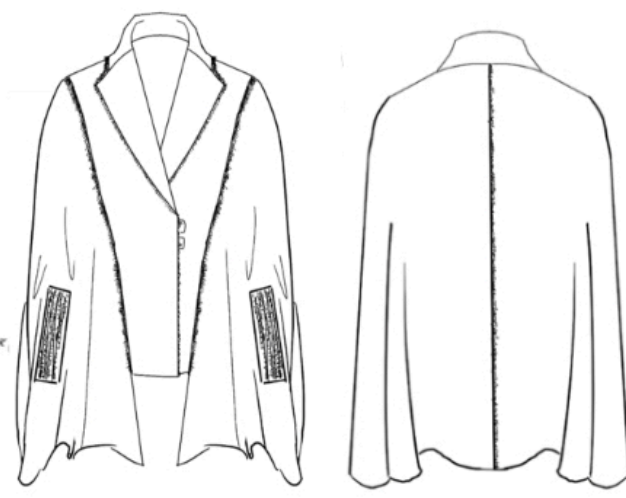


CLW Digital Prototype





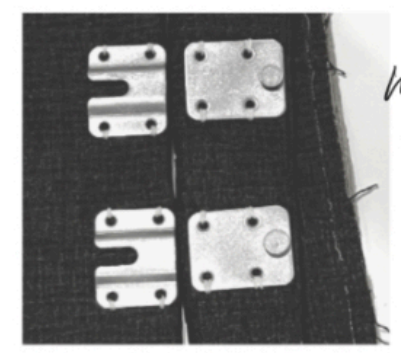
- Notes:
- Left and right pocket have mistake
  - Linen is too light and soft for cape  
change to heavy wool fabric
  - Think about length and bottom waist



Load sample

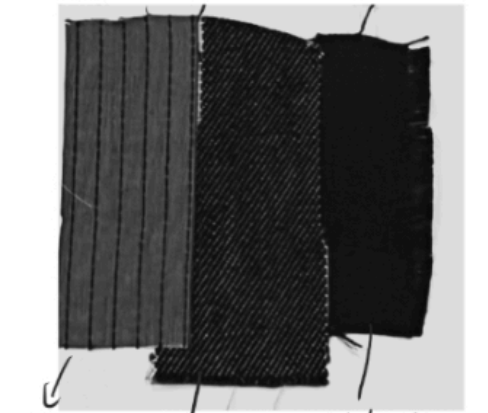


Mouffe for a collar



metal connector sample

fabric swatches



replaced with heavy black wool