

CONCEPT

Rooted in the quiet intelligence of nature, this design exploration merges organic aesthetics with function-first innovation. The garments are crafted with flexible silhouettes that adapt effortlessly to various body shapes, embracing inclusivity without compromising elegance. Inspired by natural forms — leaves that fold, shells that unfurl, and vines that wrap — the collection celebrates movement, transformation, and sustainability.

Gautami's designs draw inspiration from the effortless adaptability of nature. Each piece is crafted to reflect organic forms, fluid drapes, and resilient structures found in the natural world. Adjustable closures, layered silhouettes, and shape-shifting details offer size flexibility, ensuring garments evolve with the changing rhythms of life. Neutral earthy tones and timeless vintage-inspired elements ground the collection in enduring style, while figure-enhancing cuts celebrate individuality, movement, and comfort. Every design empowers the wearer with pieces that are both versatile and emotionally connected to nature's resilience.



SURVIVAL & RESILIENCE

EARTH / NEUTRAL TONES



SIZE FLEXIBILITY

SIZE INCLUSIVE

STRENGTH

UNSTOPPABLE GROWTH

ORGANIC PATTERNS

VINTAGE TRENDS

FLUIDITY

ROOTED IN RESILIENCE

ORGANIC FLEXIBILITY



crisp-pintuck Pleats
(ETA PROOF
COTTON)

Pintuck
Pleats
Flapped.

wrap blazer
dress
for adjustable
sizing?

A pintuck
pleated
panel
or zip
for size
adjustable

Cape Top?

pleated
panel?

Flat layers
reminds me of
layers in
nature
overlapping

Draping Calico on top
of structured
coat to get the
sense of strength from
nature and structured
Pleats + Drape.

Draped with different fabric that provide more stretch and texture instead of Cashio → to visualise how I could incorporate into size flexibility and show fluidity.



FLAT PLEATS

LINEN

STRETCH SOFT JERSEY

resembling nature lines. PIN TUCK PLEATS

Structured Fitted Flare (same effect as pleats) ↓ (vintage trends → Modern (hourglass figures))

asymmetrical side draped top

puffed drape ease drape

Pin tuck pleats

gathered pleated drape

EMBROIDERY EXPLORATION

Hand Embroidery
inspiring
algae
textures.



hand embroidery
inspired by
shapes and
branches



Hand Embroidery
inspiring the
Shapes pulled
from
Fungi.



Hand Beading
and
Embroidery
on
ETA PROOF
COTTON.



Beading
lace
(Similar
Sdh)

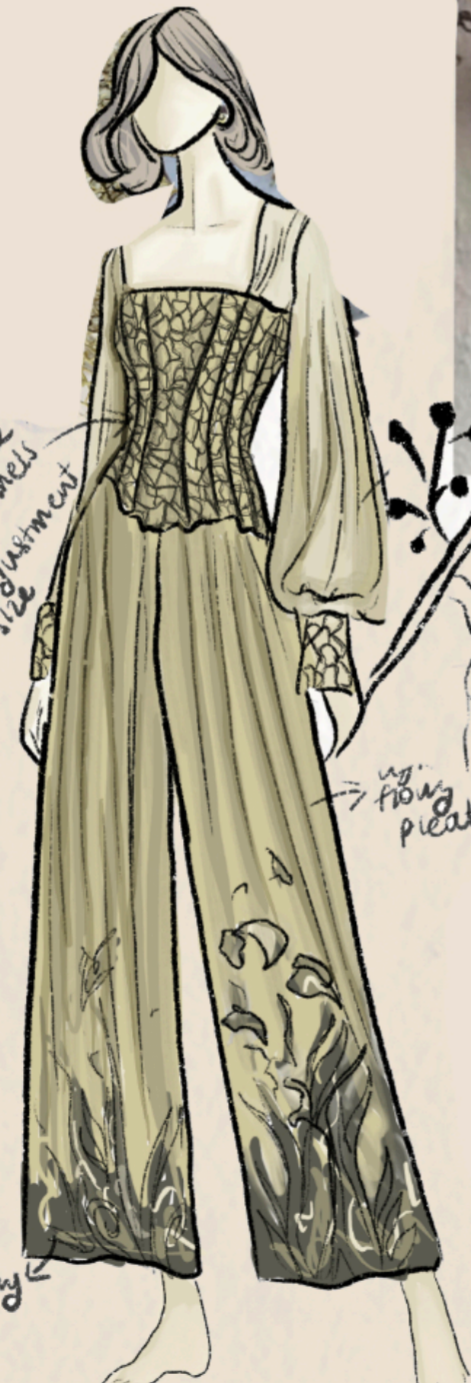


Image
of Dried
Coral →

Reminds me
of corset
lace.



lace
panels
in the



flow
pleat

nature
embroidery



Contemporary Vintage
trends continuing
in modern
context.

DESIGN DEVELOPMENTS





EMBROIDERY DEVELOPMENTS



love this
 but seems
 more like
 buttons

like the
 roundoff
 looks but
 maybe difficult
 to see because
 of curves
 placement

okay

not complementing
 the
 rest of the dress
 (uncomfortable
 position maybe)

too much
 placement
 seems of

Too much
 maybe
 ↳ overground

complement
 dress and
 matching
 shoulder look
 blocks
 ↳ middle placement
 elements
 body structure
 too over the line/
 overpowering

feels empty in
 middle
 all attention
 at top
 ↳ may disrupt
 attention on
 bust
 ↳ difficult to
 embroidery on
 curve

INITIAL DESIGN



didn't give drape like design needed to pin.



TOILE 1

Giving old vibes, not appealing and youthful. Covers trousers.

Nice cleavage.



FINAL TOILE

- Better, more structure yet drapy.
- Cropped top more young
- Pleated trousers visible.

look 3

(100% polyester)
Lining
↑

(100% Polyester Satin)
Liquid Satin
←

(100% polyester)
French crepe
←

(100% Poly Satin)
lining
←

look 1

(100% Poly elastane)
Double crepe
↓

(100% Wool)
Wool crepe
↓

look 2

(100% polyester)
lining
→



FINAL LINE UP





