



# Ur Nan's House

Maisie Elwick

My work is centered around creating high-quality garments from unconventional materials - vintage doilies, deadstock fabrics, and other reclaimed textiles. I transform these fabrics through hand-printed designs, dyeing techniques, and fabric manipulation. This approach aligns with my strong belief in sustainability, environmental preservation, and the value of mindful consumption. I champion the idea of buying less to reduce waste and minimize our impact on landfills.

A key part of my process involves sourcing unique garments, fabrics, and objects, embracing the individuality of each piece. As I work, designs evolve organically based on what I find, ensuring that each garment is truly one-of-a-kind. This ethos is deeply rooted in my love for vintage clothing and charity shopping, which not only informs my budget-conscious approach but also celebrates the history and craftsmanship of older items.

In this project, I've explored the concept of preserving the spirit of previous generations, with a particular focus on my grandparents' home. The textures, patterns, and sense of care that filled their space - especially the attention to soft furnishings and decorative details - have deeply influenced the aesthetic direction of this collection. Using techniques like shirring and layered prints, I've created maximalist garments that evoke a sense of nostalgia and warmth. Through my work, I aim to craft a collection that feels inviting, intimate, and rich in history - a celebration of both the past and the future.



*Using a combination of research from my grandparents house and old archives from vintage home magazines*



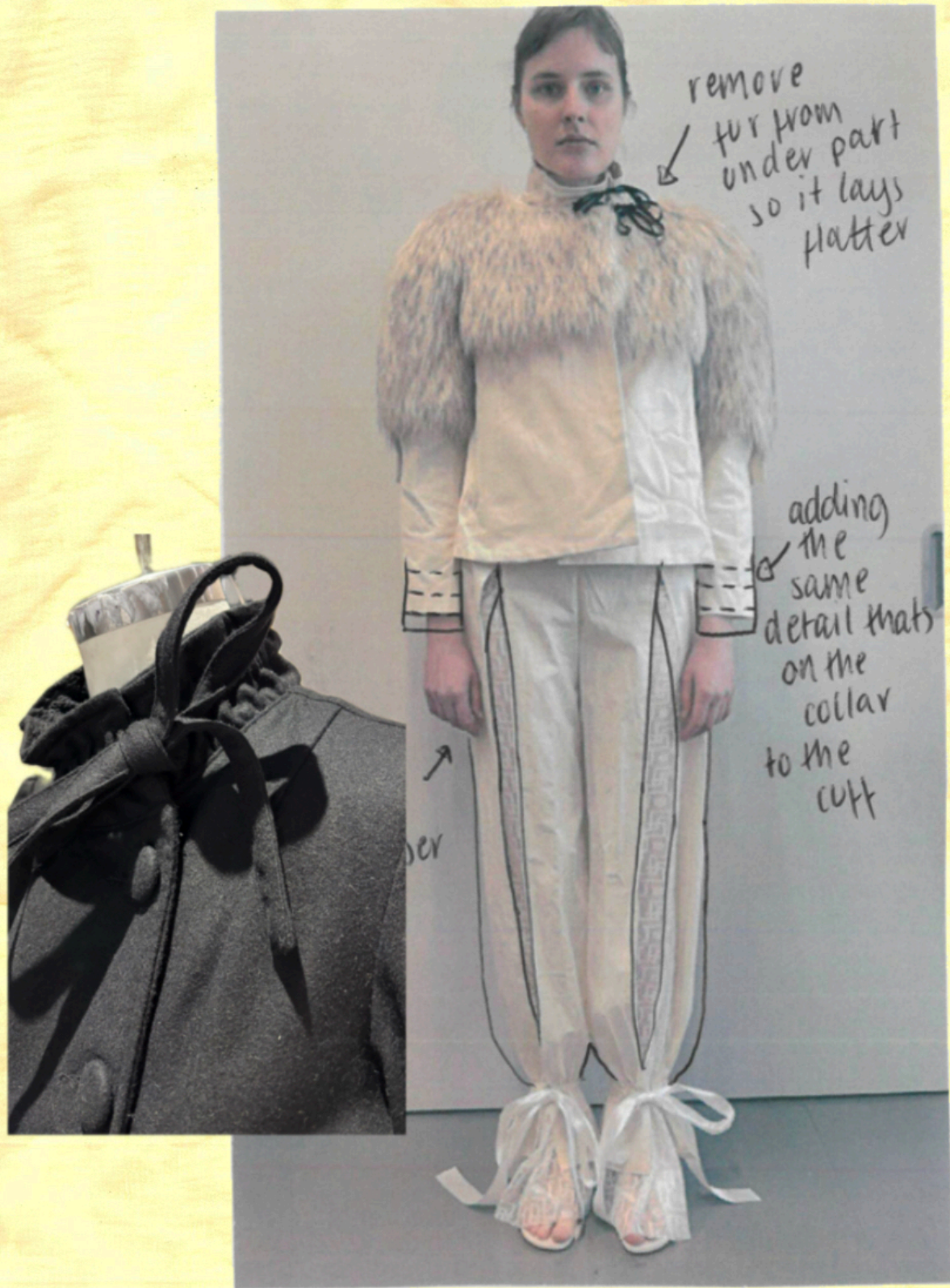


*The fixation of this being on the prints  
everywhere*



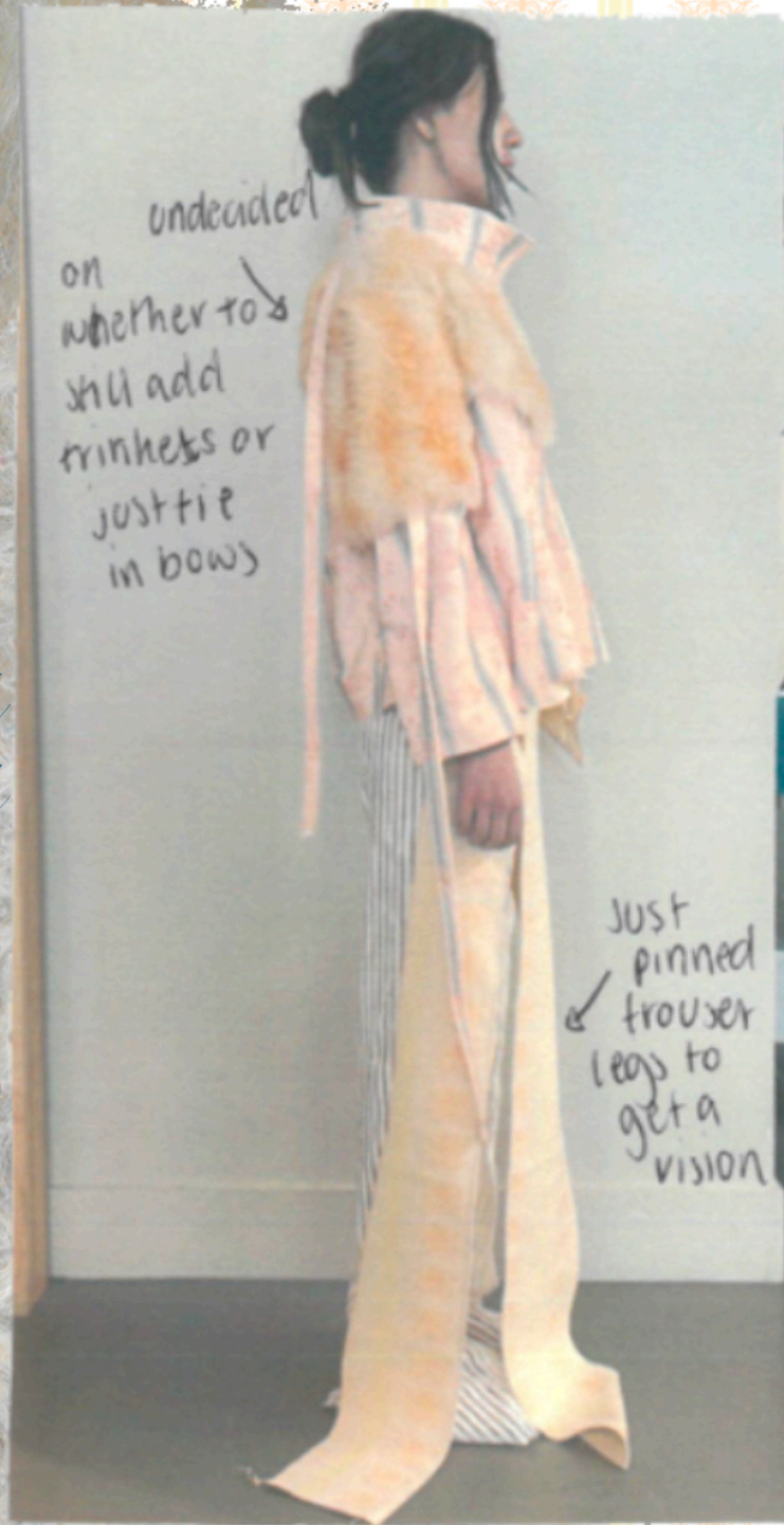


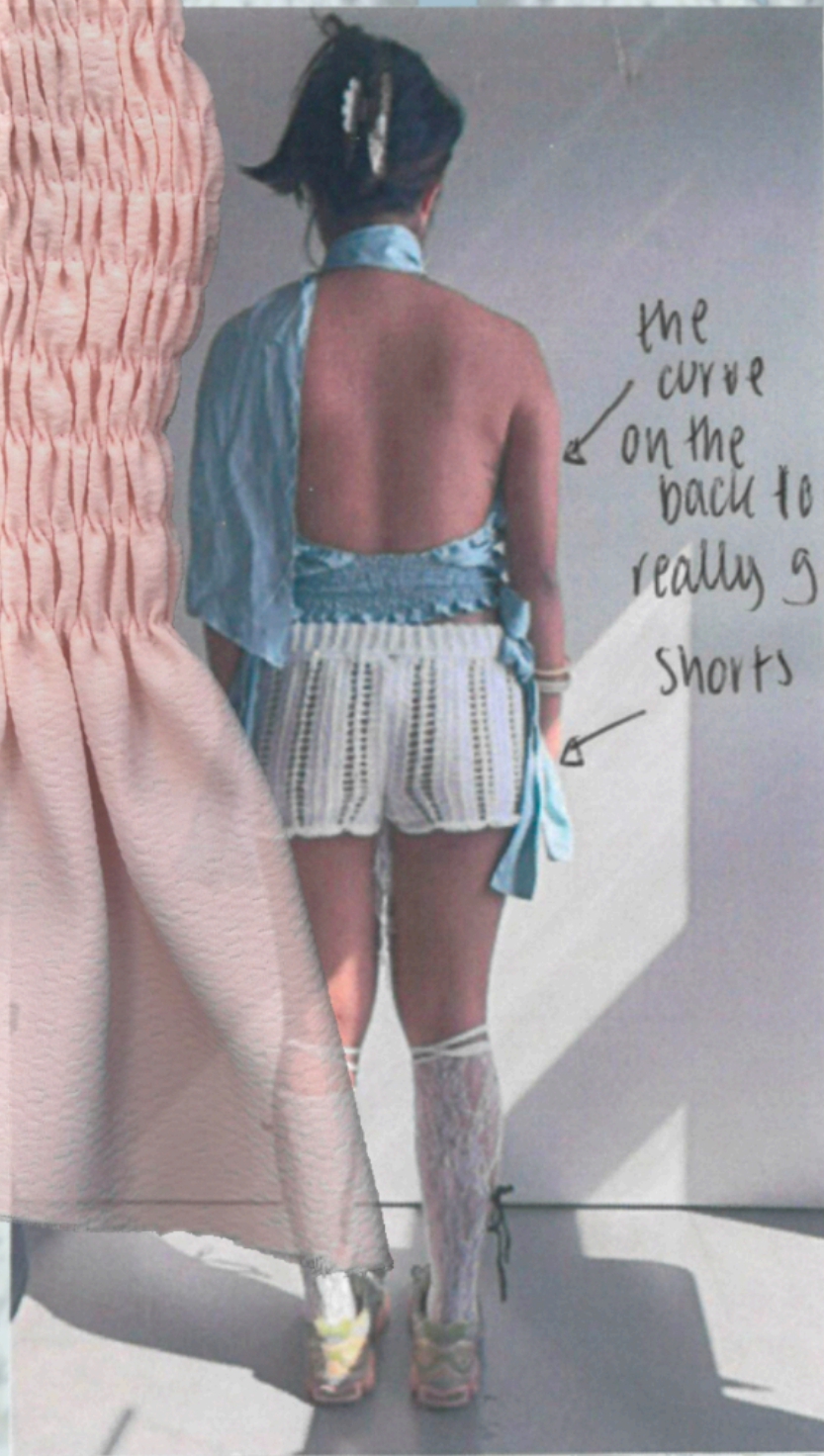
*While wanting to keep a slightly kitsch aesthetic, thinking of the classic boudoir and the archetypes surrounding that*



*Combining with modern archetypes*

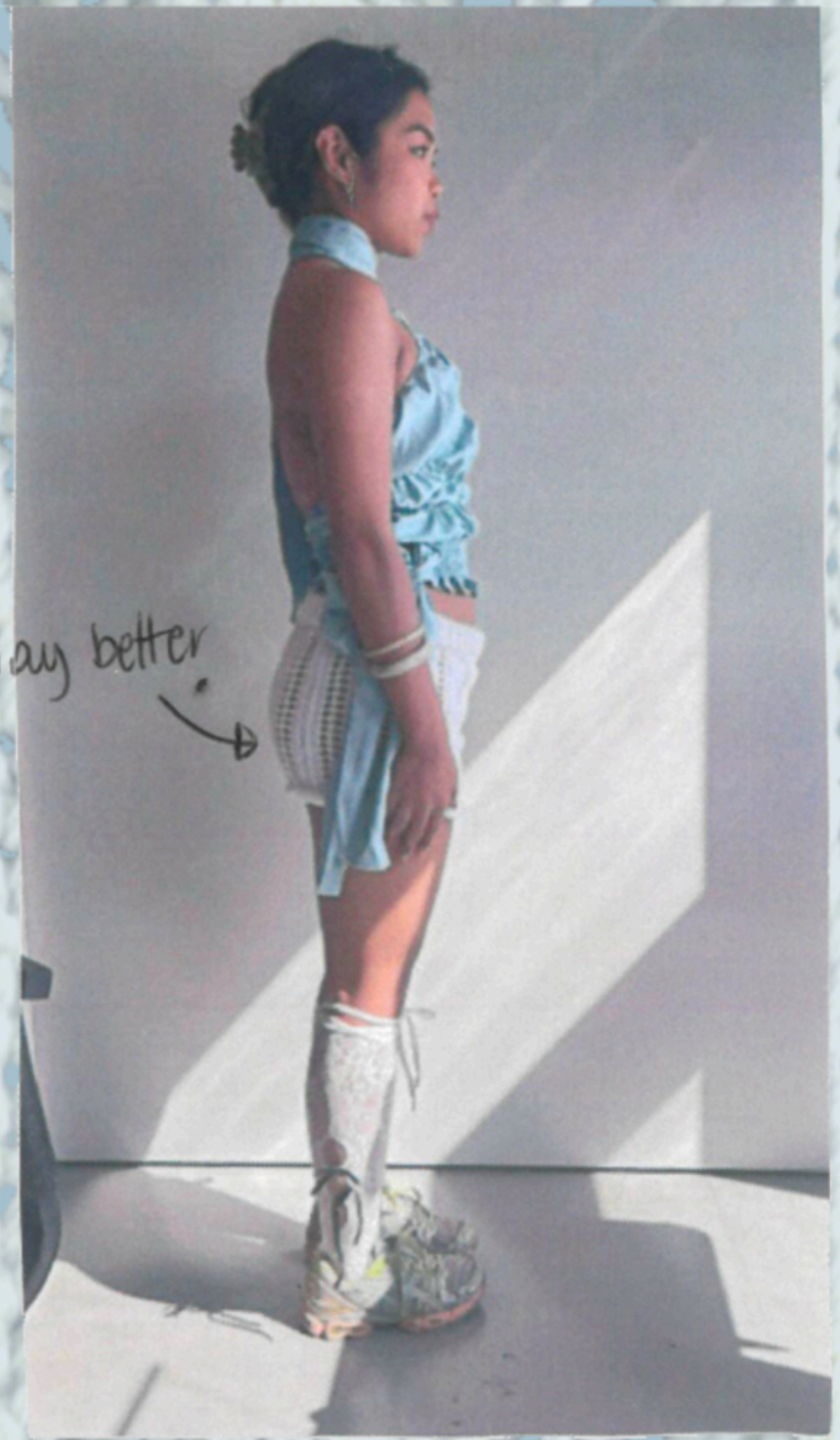
*Dying the fur to bring back  
the kitsch*





the curve on the back looks really good

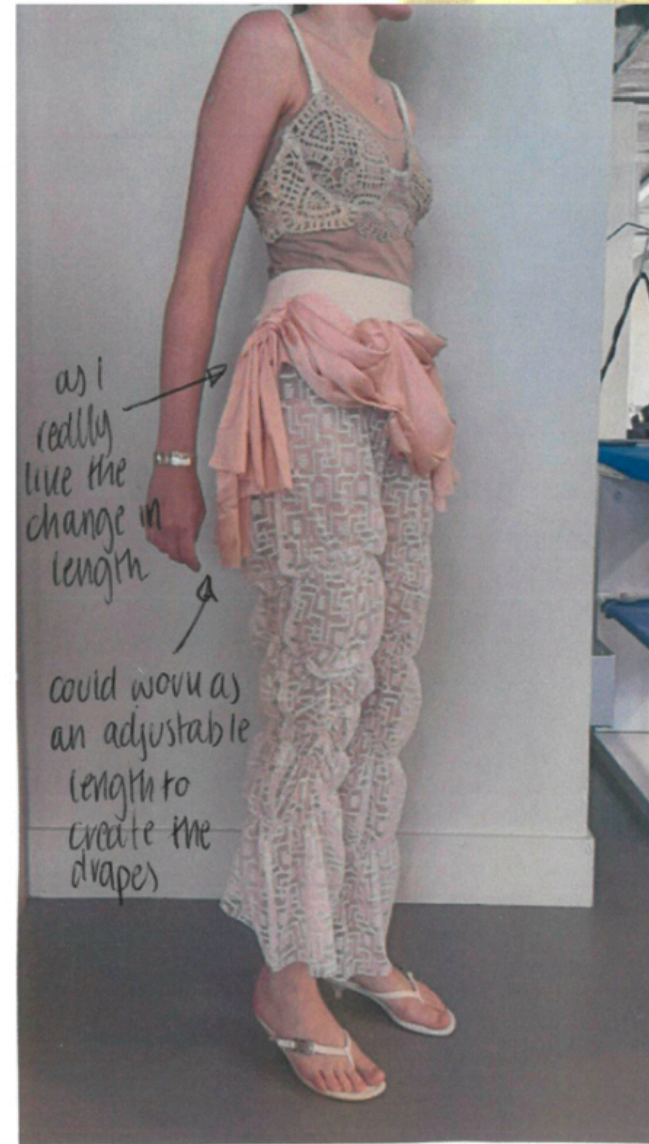
Shorts sit way better



*Bringing the shirring back*

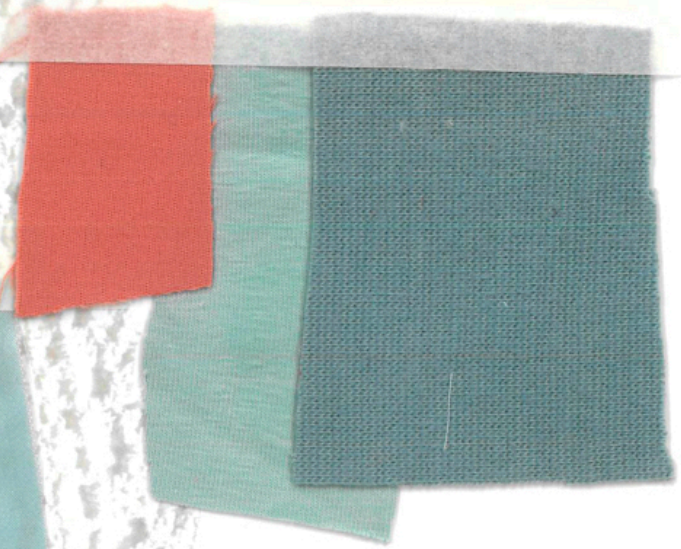
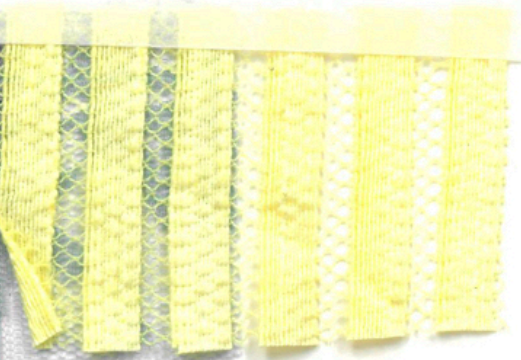


*Building the Looks*



*Bringing more soft furnishings through*





FINAL FABRIC BOARD













*Lineup*

185

185

225

180 / 22

WIST

# COOL

## *Seaside Escape*

CHOCOLATE  
NEAPOLITAN

185

RY TWIST



29

NEAPOLITAN

# Ice Cream

*My small seaside town called Scarborough and the nostalgia the town holds was the source of my inspiration*

IS GOOD  
FOR YOU



*Such as the popular icecream parlour where I used to work*

*And then also my current role in the RNLI and it's long standing history in Scarborough*



*Looking at past and present*



A Scottish  
Coxswain

## COME TO THE RESCUE TOO

Almost daily round these Isles comes the call for rescue work at Sea.

It costs £250,000 each year to maintain the British Life-Boat Service.

Every penny you can send will help these brave men at their work.

Send whatever you can to

**ROYAL NATIONAL  
LIFE-BOAT INSTITUTION**  
LIFE-BOAT HOUSE

42, Grosvenor Gardens, London, S.W.1

THE EARL OF HARROWBY, *Hon. Treasurer.*  
LT.-COL. C. R. SATTERTHWAITHE, O.B.E.,  
*Secretary.*

*Using the classic fishermen archetypes*



*With exciting textures*

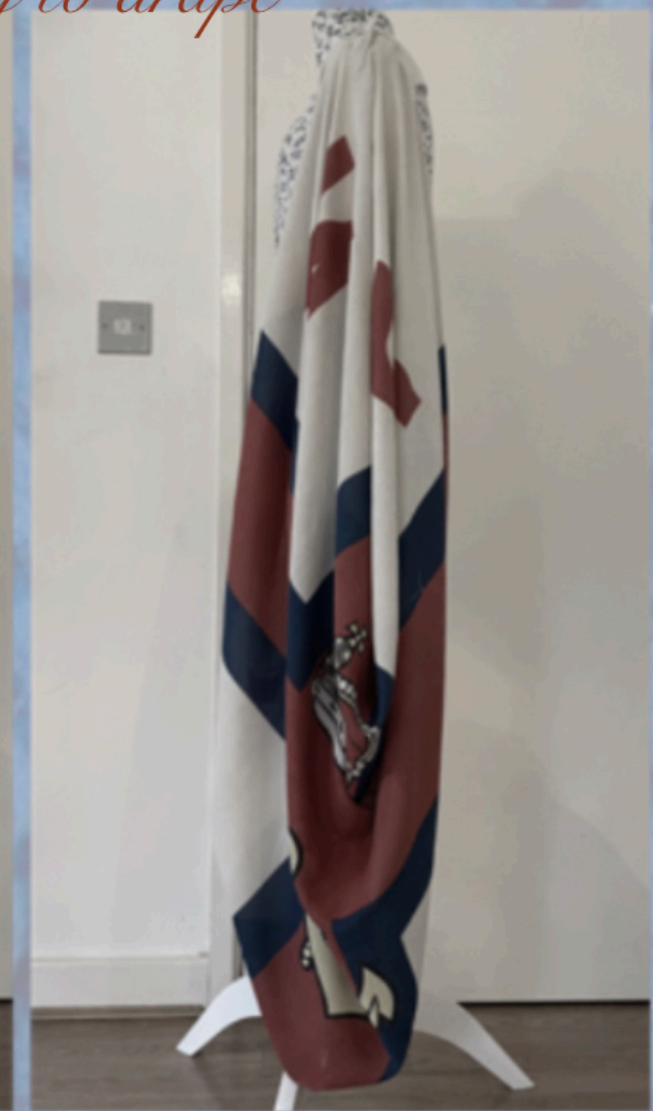
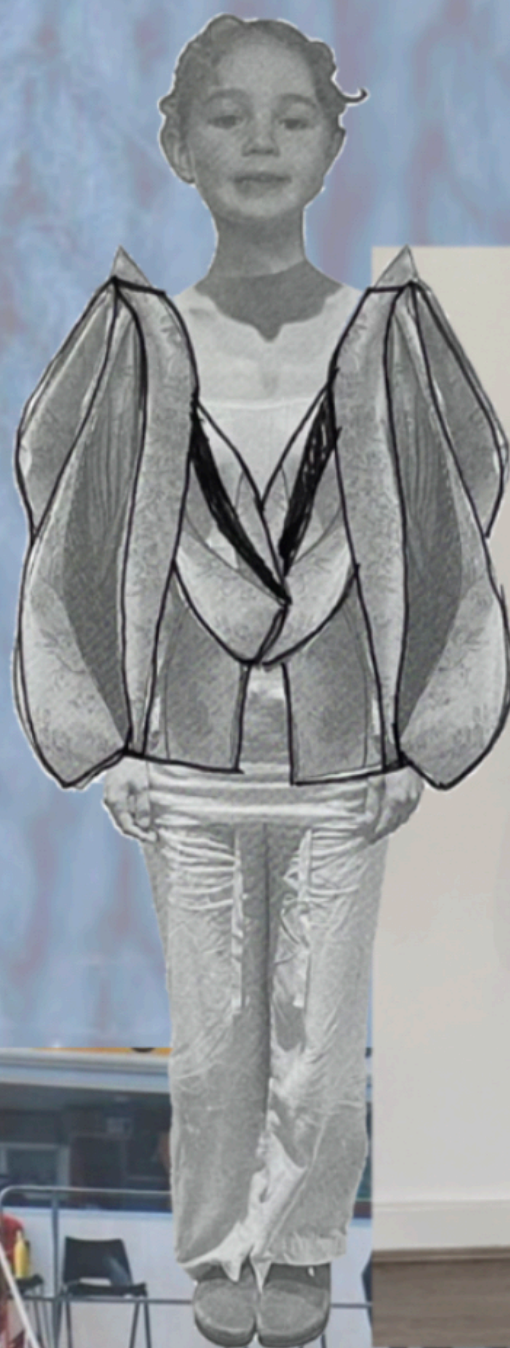
*Having me and my sisters childhood as a reference point for the nostalgia*



*The images of Martin Parr encapsulated what our childhood summers were like*

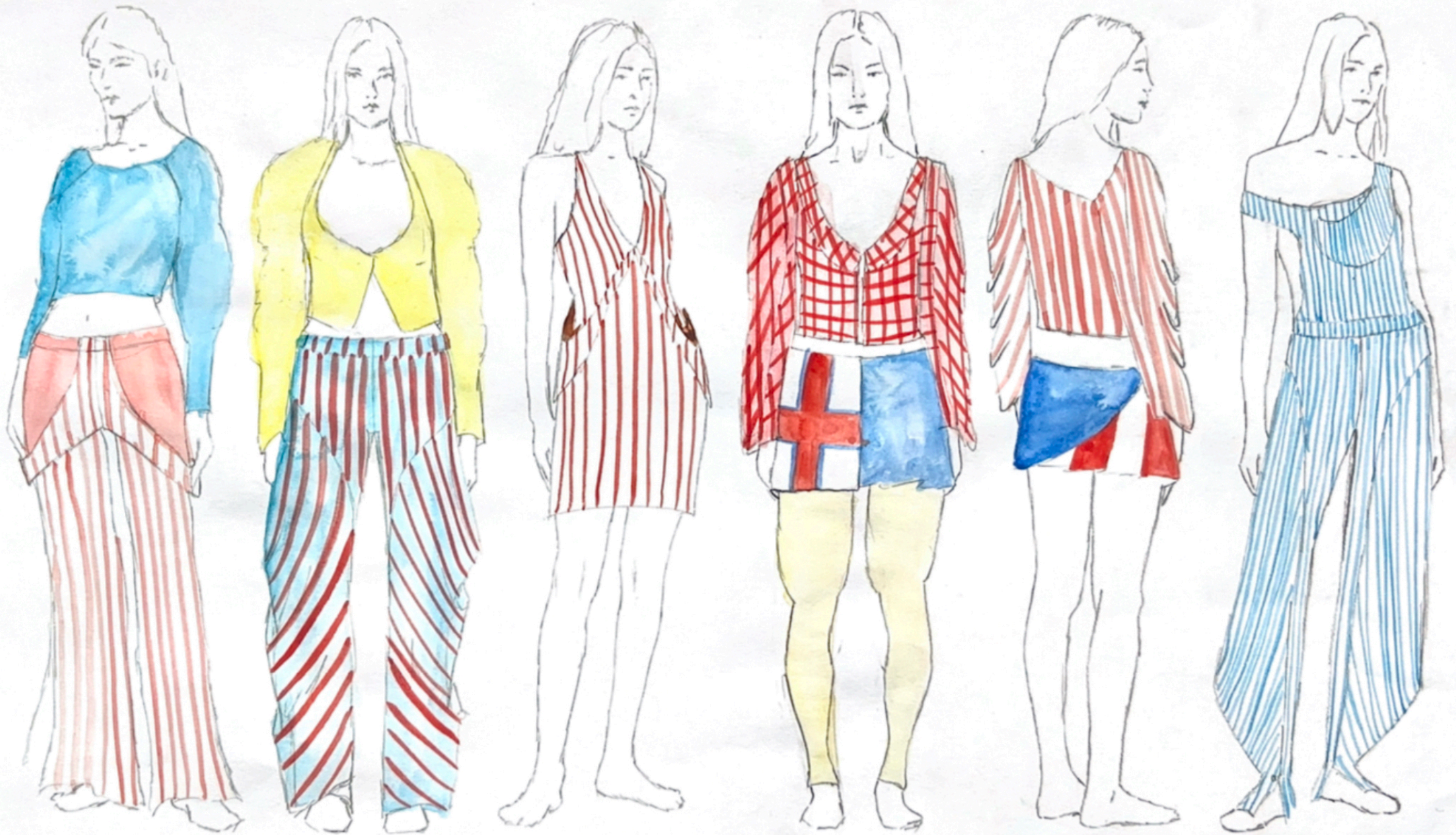


*Using the RNLI flag to drape*



*Developing the dungarees*

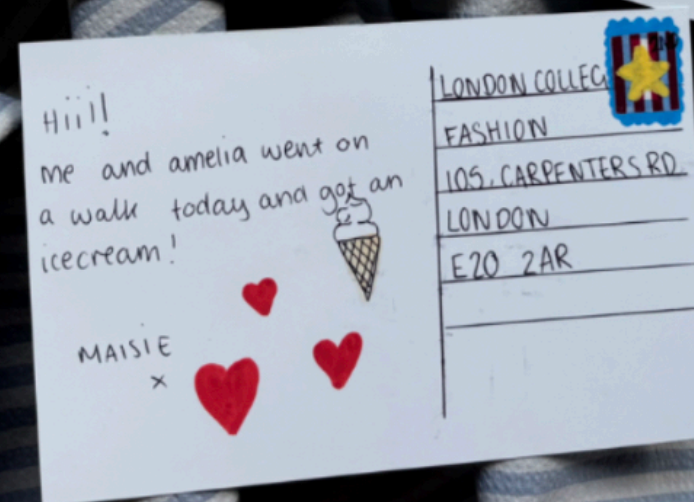




*Final Lineup*



*The postcards I made alongside this project to push the childhood nostalgia*



# *New Craft House Competition*

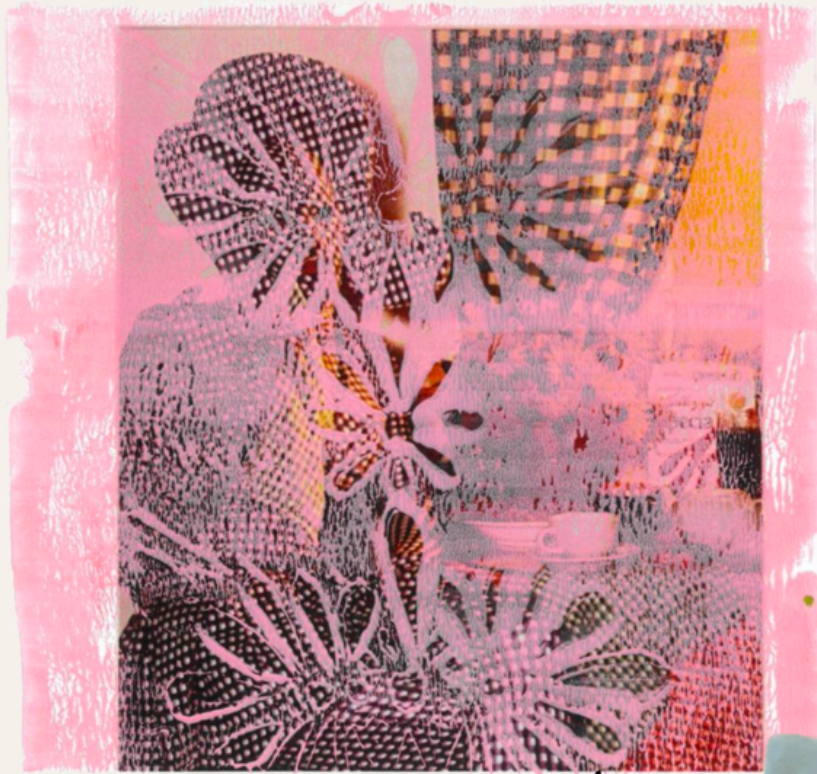
## *Entry -*

### Manifesto

I focus on making high quality garments out of unconventional fabrics, such as vintage doilies and deadstock fabrics. Transforming them through hand created prints, dying and fabric manipulation. My values heavily align with vintage garments and charity shopping. This works with my budget and belief that we should buy less to reduce landfills and preserve the environment. I also love sourcing garments, fabrics and unusual items and embrace the uniqueness of each piece. Designs evolve dependant on what I find and each piece becomes one of a kind.

This project is based on my grandparents house and the little quirks they have with preserving their little home. Things such as covering every surface in their house with things like plastic sheets and dust covers to doilies. The idea of hoarding is very common amongst the older generation, in multiple ways. Within my initial research I found pictures of house proud women from the 1970s to the 2000s with these fabulous houses and dressed in their evening gowns and this heavily reminded me of my grandma. The almost camp aesthetic of heavy floral patterns and these fluffy dogs are a large inspiration into this collection.

Throughout my education I have faced many challenges, but the most prominent one has been becoming estranged from my parents, struggling to financially afford my rent and supplies for my degree. Throughout the summer I work two jobs totalling 70 hours of work per week to be able to be comfortable enough to renew my tenancy in London, the struggle of having to afford to live in London still catches up to me. The fabric allowance would be a valuable support in the development of my final major project.



I like how there is a thicker line of paint around the cut out shapes



I then tried to print the lace pattern over the top of the inverse lino print



I then inverted the lino on the roller and then tried it on paper and fabric





this artist created her own dream world - which consisted of lots of shirred fabrics, which is what led me to combining the techniques



with the printing over the top of the shirring creates a broken print.



for my archetype I decided to look at classic undergarments as they were used to help preserve their day clothes

# Print on Garments

*I didn't wait to disregard the prints in my collection, so I digitally edited them on so the maximalist aesthetic could shine through*



*Layering*



DESIGN LAB FINAL LINEUP