



The image features a repeating pattern of stylized purple flowers with white centers and green leaves on a yellow background. The flowers are arranged in a grid-like pattern, with each flower having five petals and a central cluster of white stamens. The leaves are simple, pointed shapes. The background is a solid yellow color with a subtle pattern of small green dots.

Made by: Megumi Nishiatsu

Dotting Dreams:

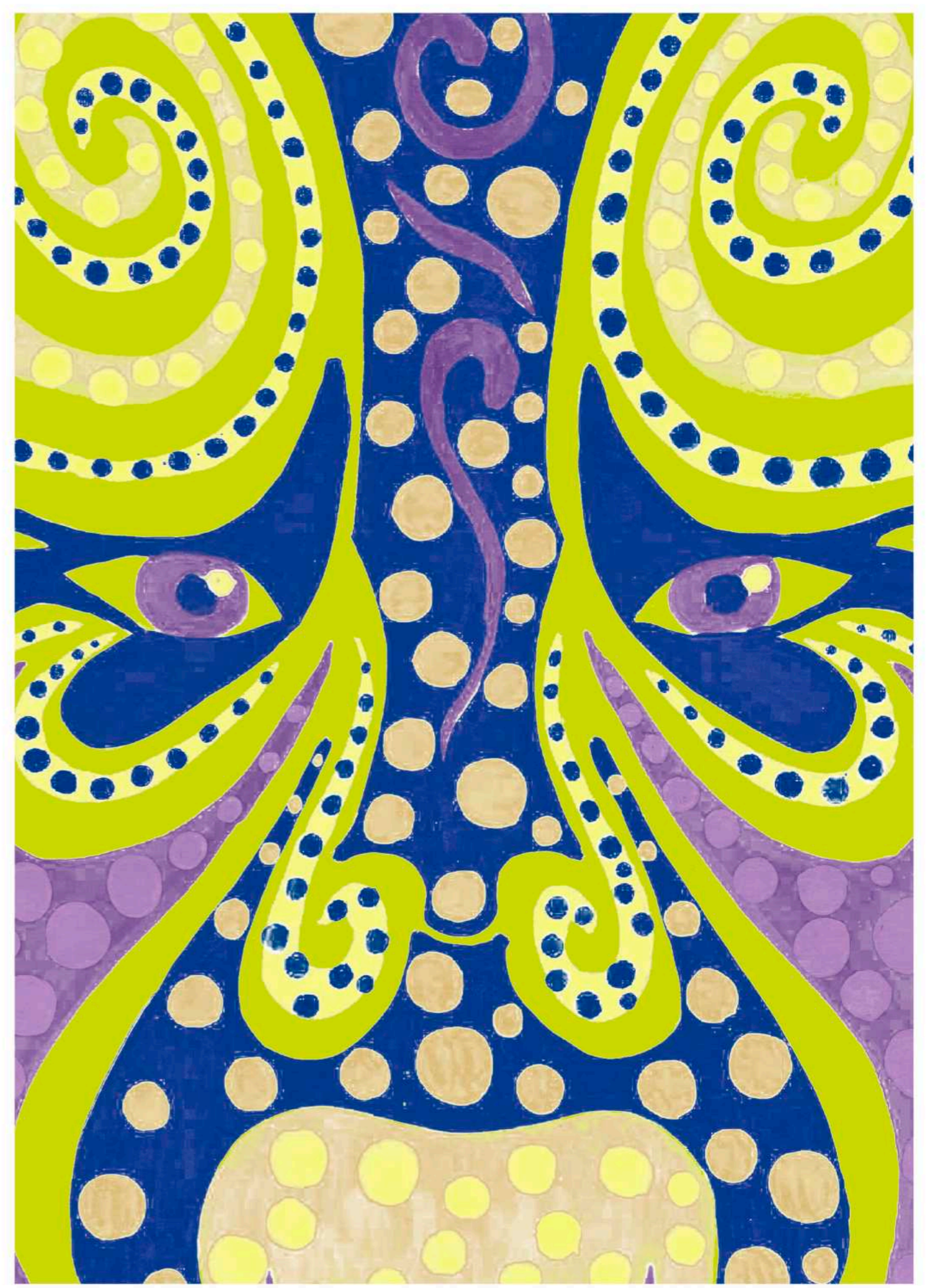
Flowers and Drama

This collection explores the vivid intersection of traditional Chinese opera and botanical beauty, blending realistic painting, pop art, and Yayoi Kusama-inspired polka dots. Opera costume patterns and floral motifs intertwine to symbolize a dialogue between fleeting performance and life's enduring cycle, where tradition blossoms into modernity.



colorboard



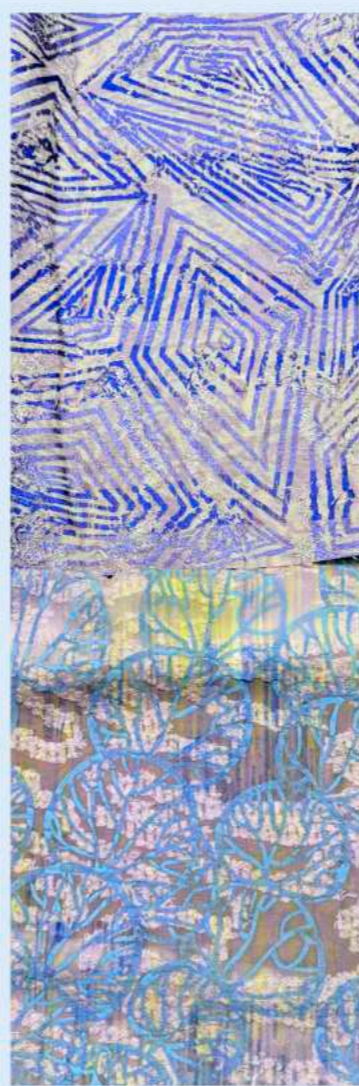


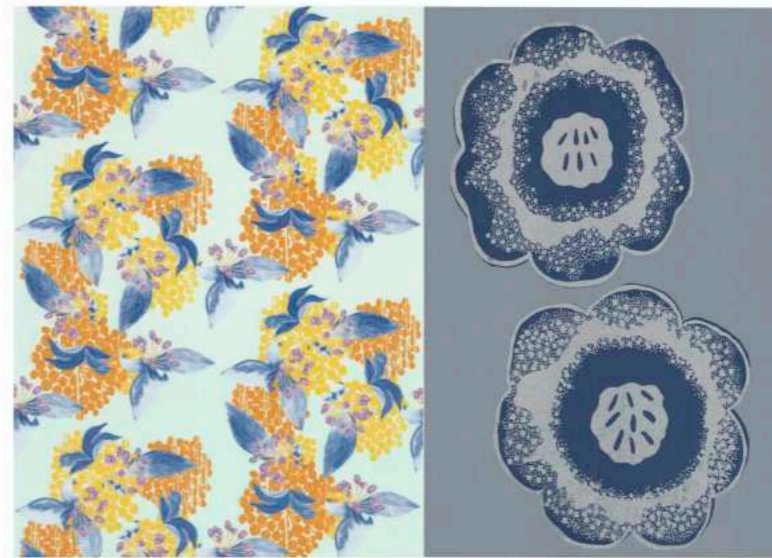
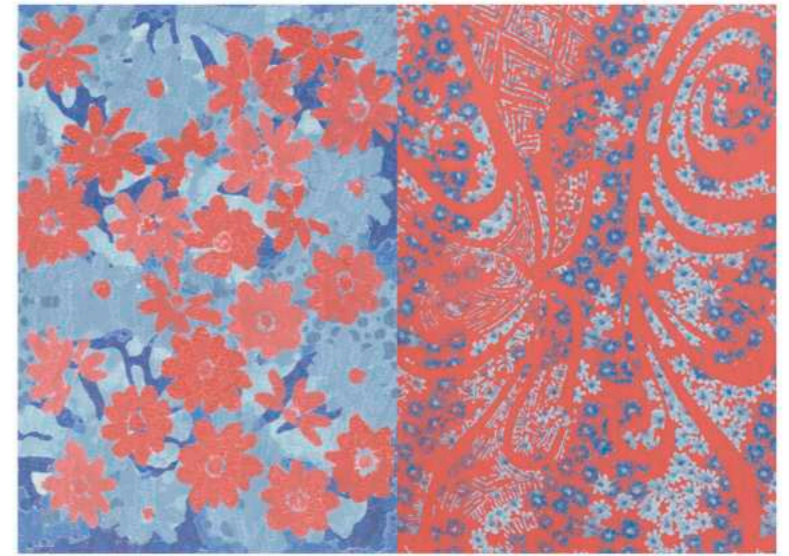
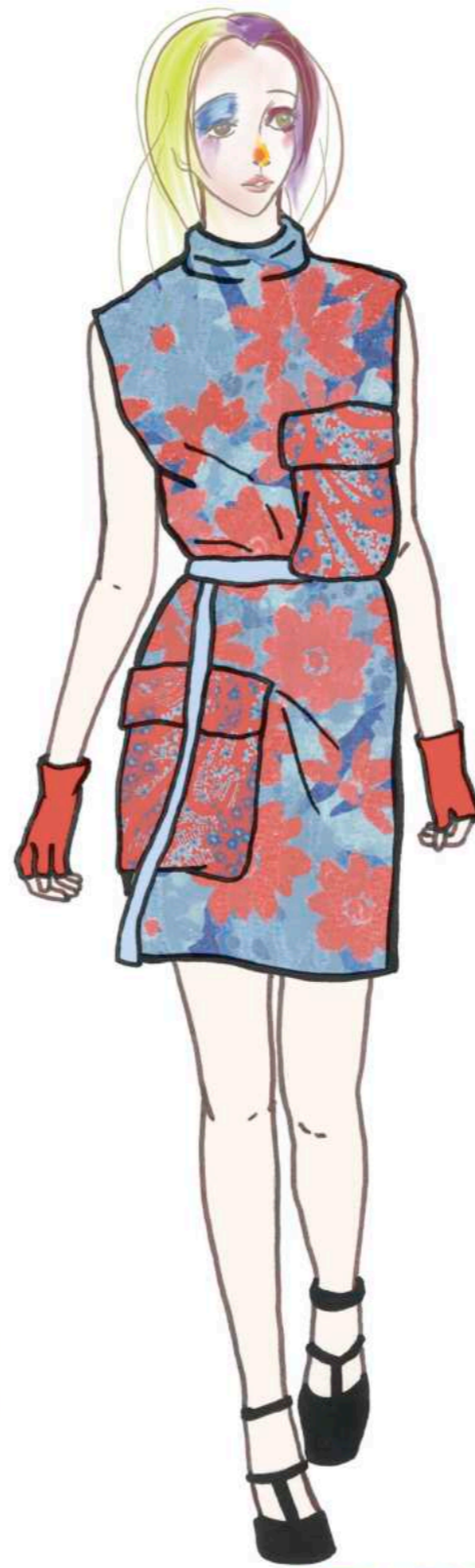
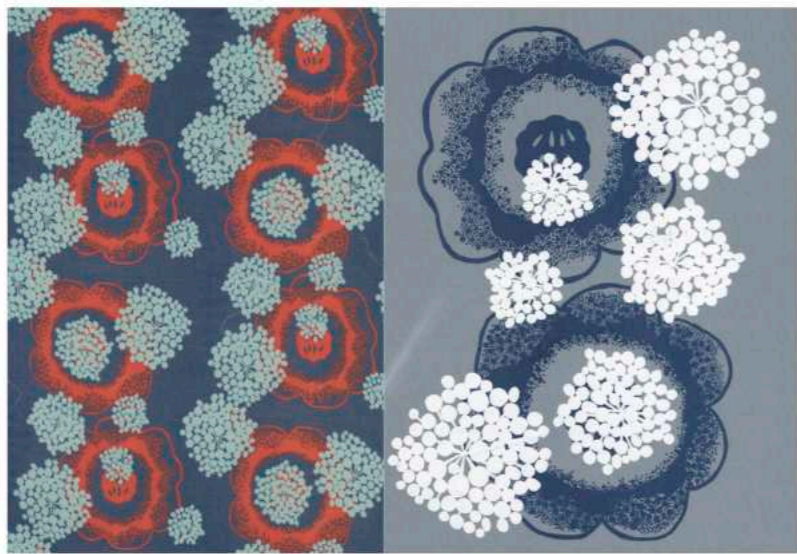
Inspired from different masks from traditional Chinese culture, draw the mask with dots and different basic geometric forms in traditional Chinese patterns.

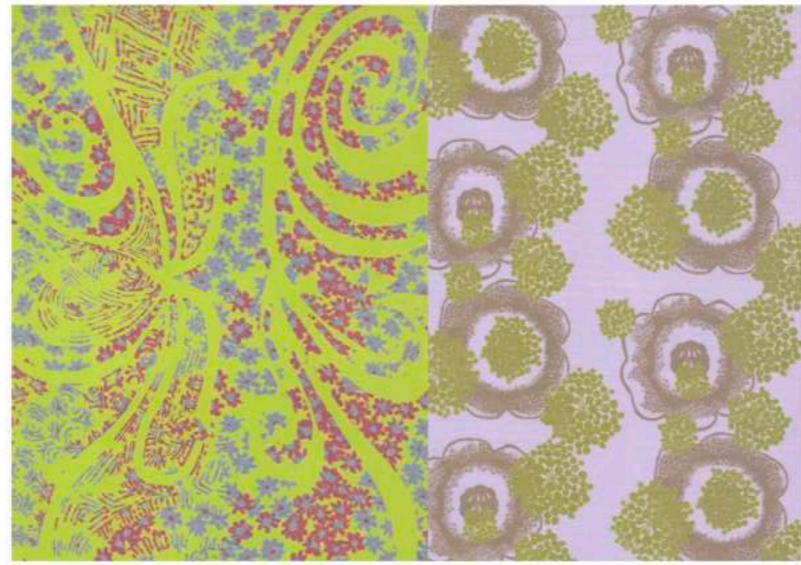


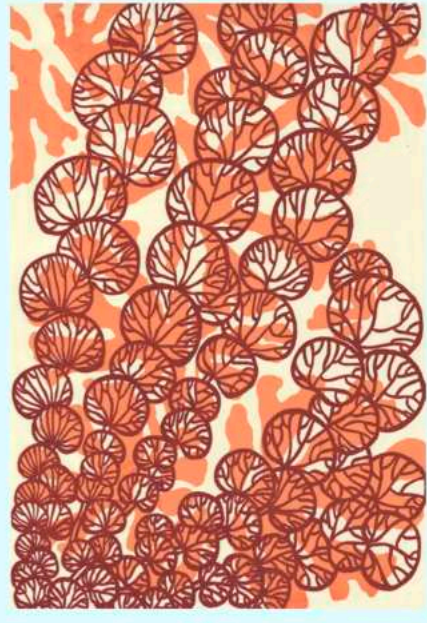
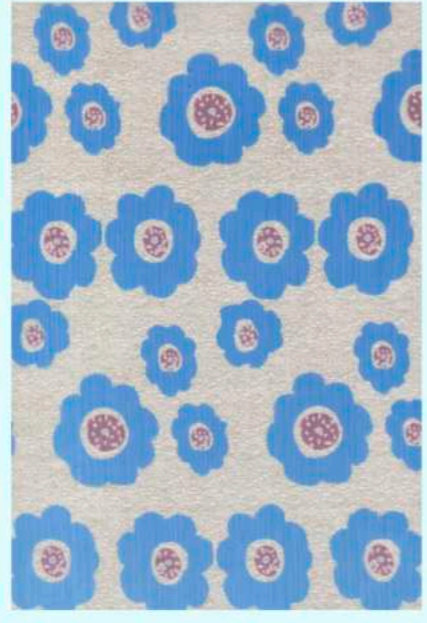
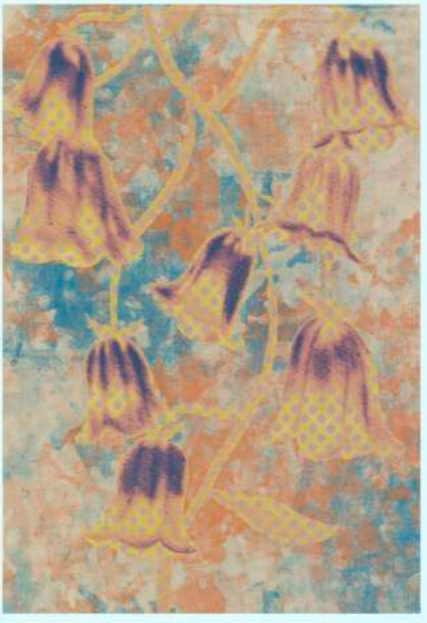
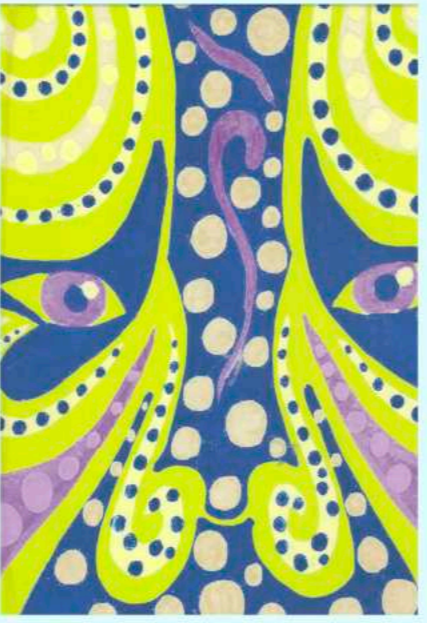
我
不
能
不
愛
你

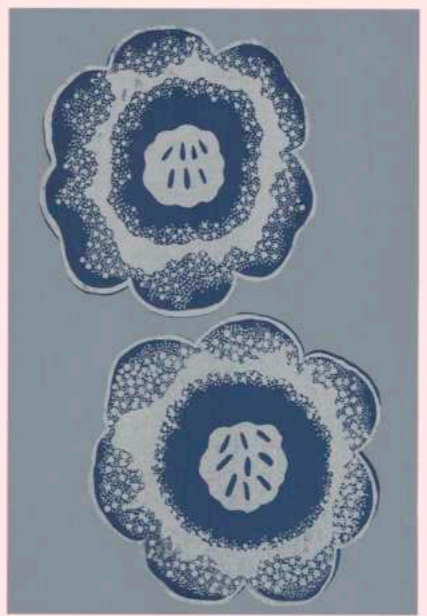
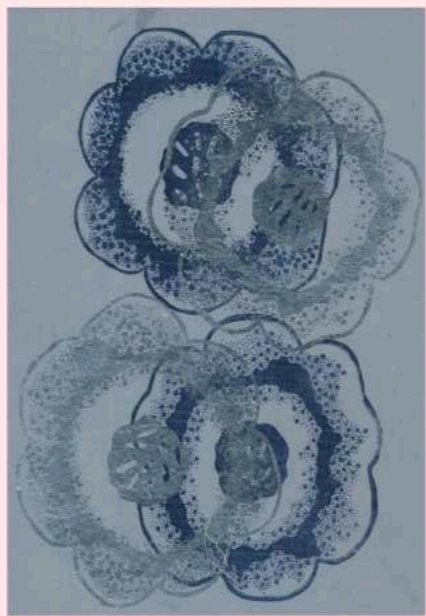
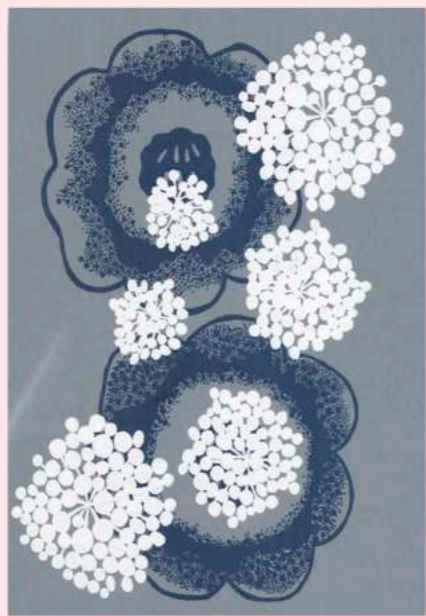
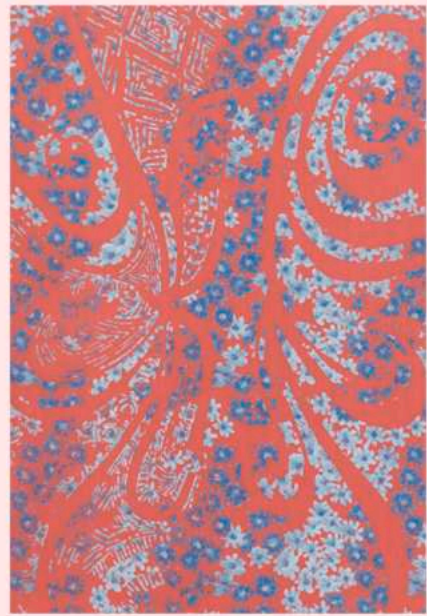
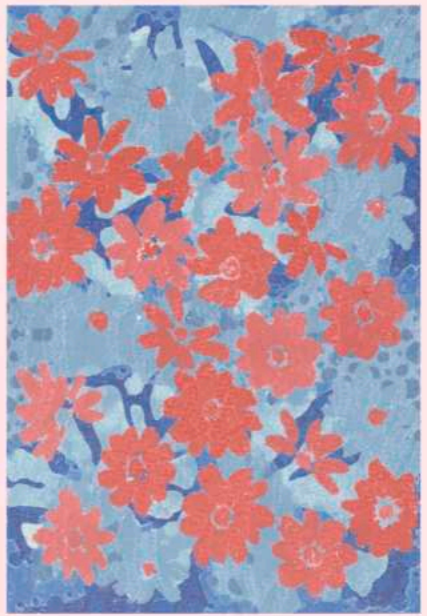
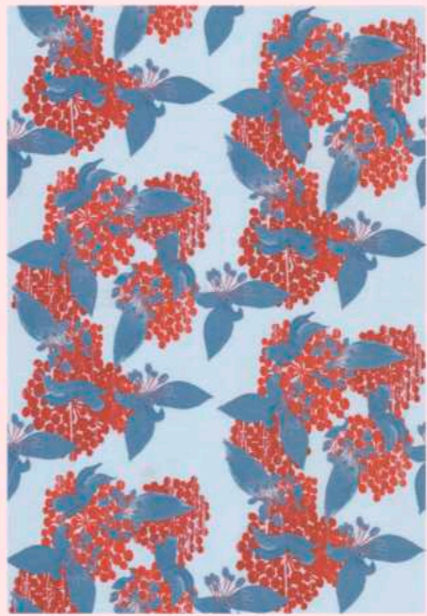
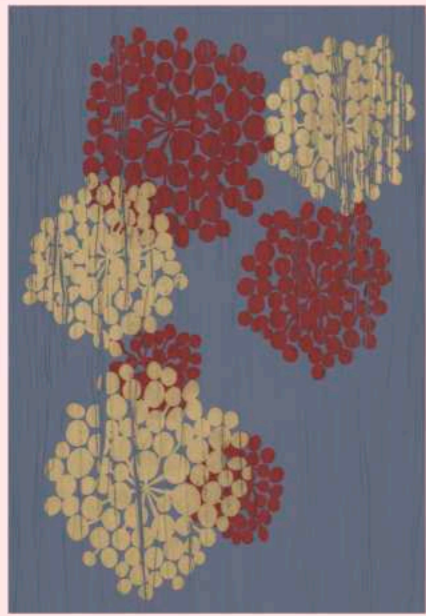
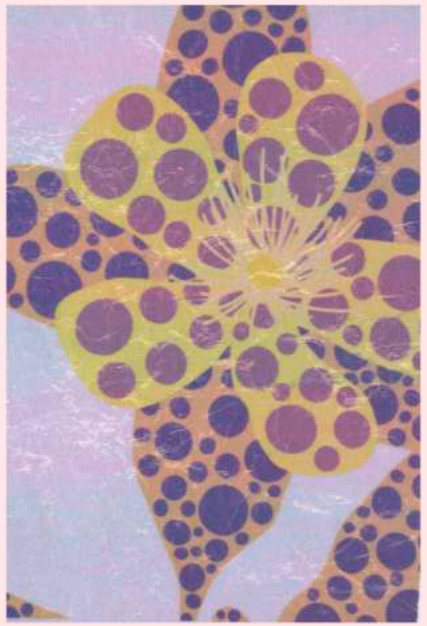


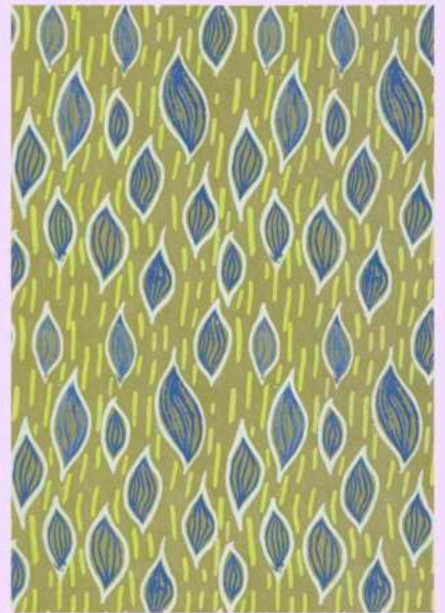
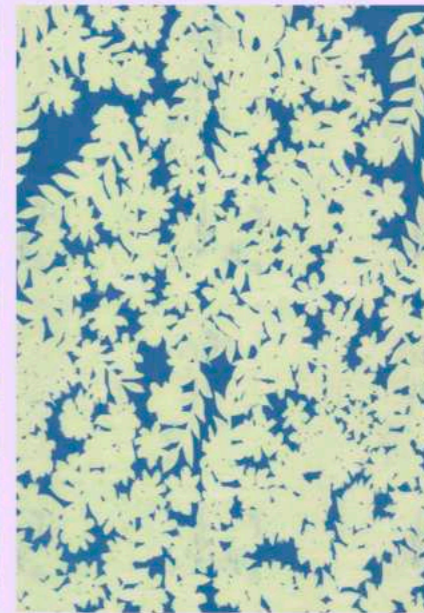
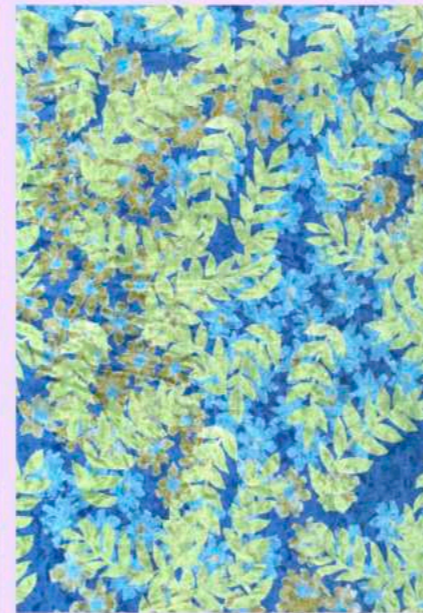












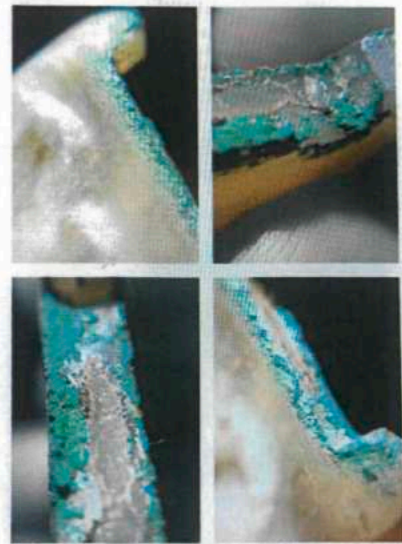
Traces of Time





Drawing from the surface erosion, scratches, and patina formed over time on Chinese artifacts, this print series investigates how material decay can serve as a narrative medium within textile design.

Bronze Pot or Ancient Jar

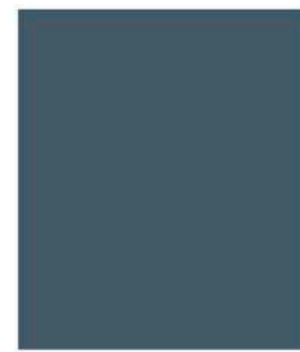
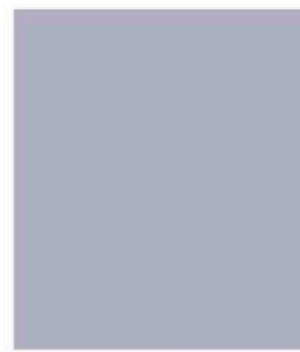
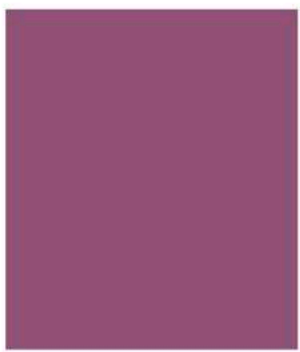
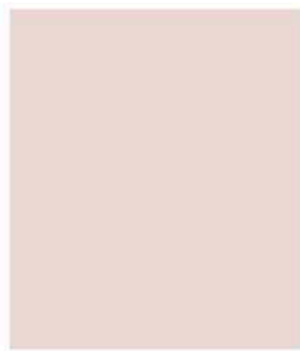
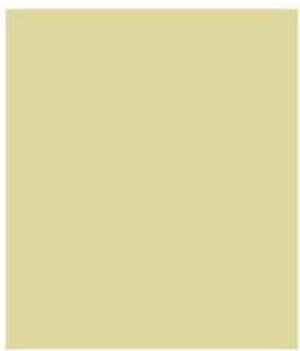


*The "open" garden
garden enclosed
stones.
(to create the
"mountain")*

*The combination of
Chinese & western
garment designs*



This project draws inspiration from the 18th-century Chinoiserie movement and my own experience navigating between cultures. By integrating traditional Chinese garment forms (such as the ao) with Western tailoring (like wool coats and biker jackets), and incorporating weathered patterns from cultural relics, the collection reinterprets heritage through storytelling, craftsmanship, and multicultural identity.



Fitting Photo



Line up



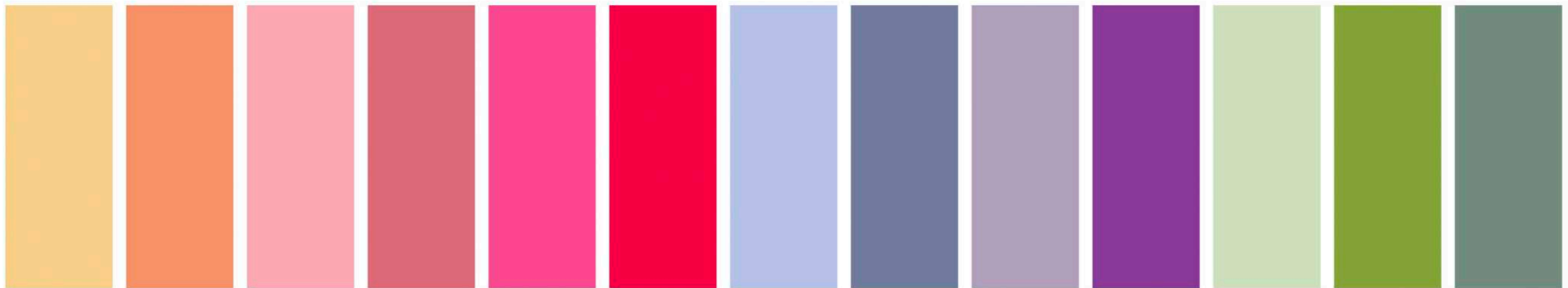
Petals in the Shadows



Rooted in the visual language of traditional Chinese shadow puppetry, this project fuses natural floral forms with Murakami-style iconography and vivid surrealist color palettes to reinterpret traditional cultural imagery in a contemporary visual context.

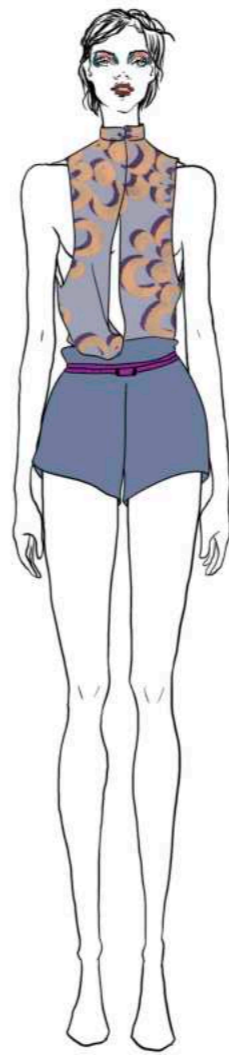
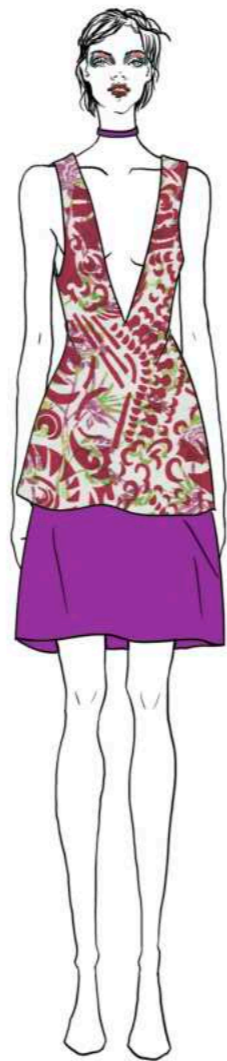
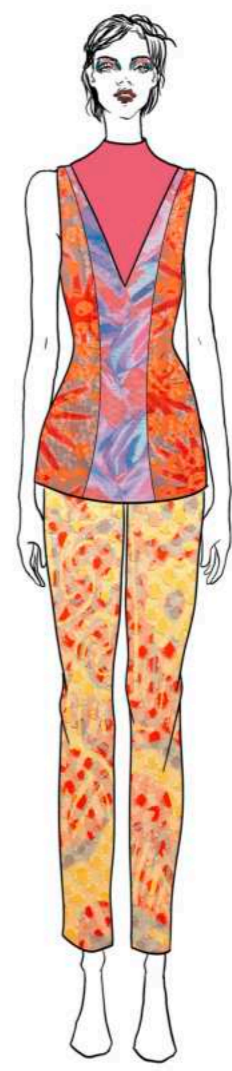
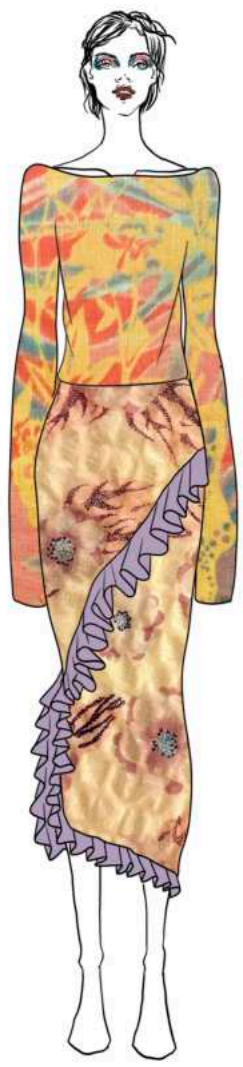


Colorboard









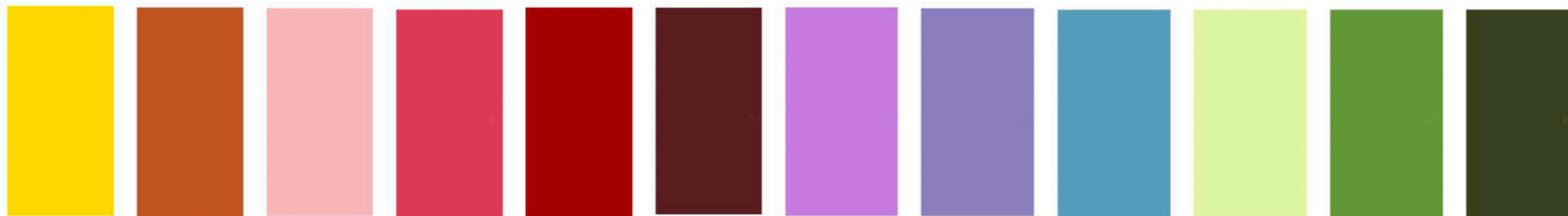
Petals and Paper

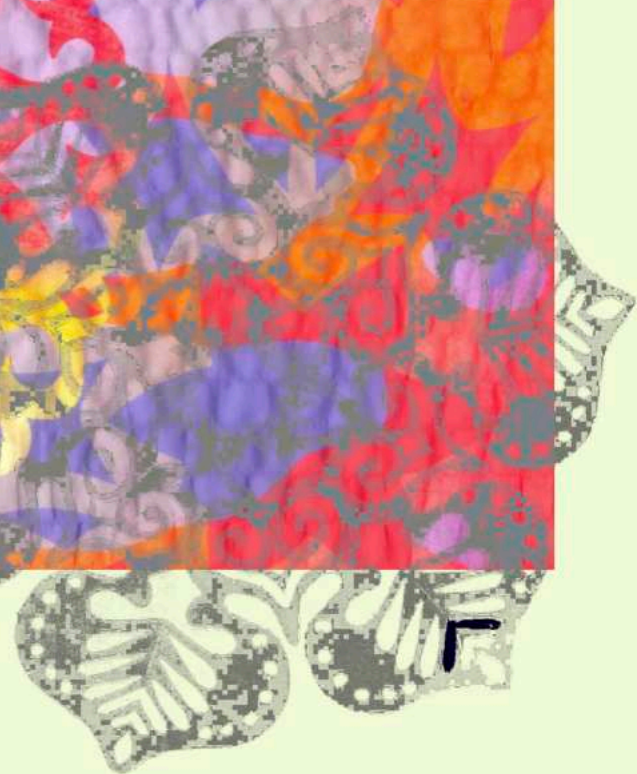
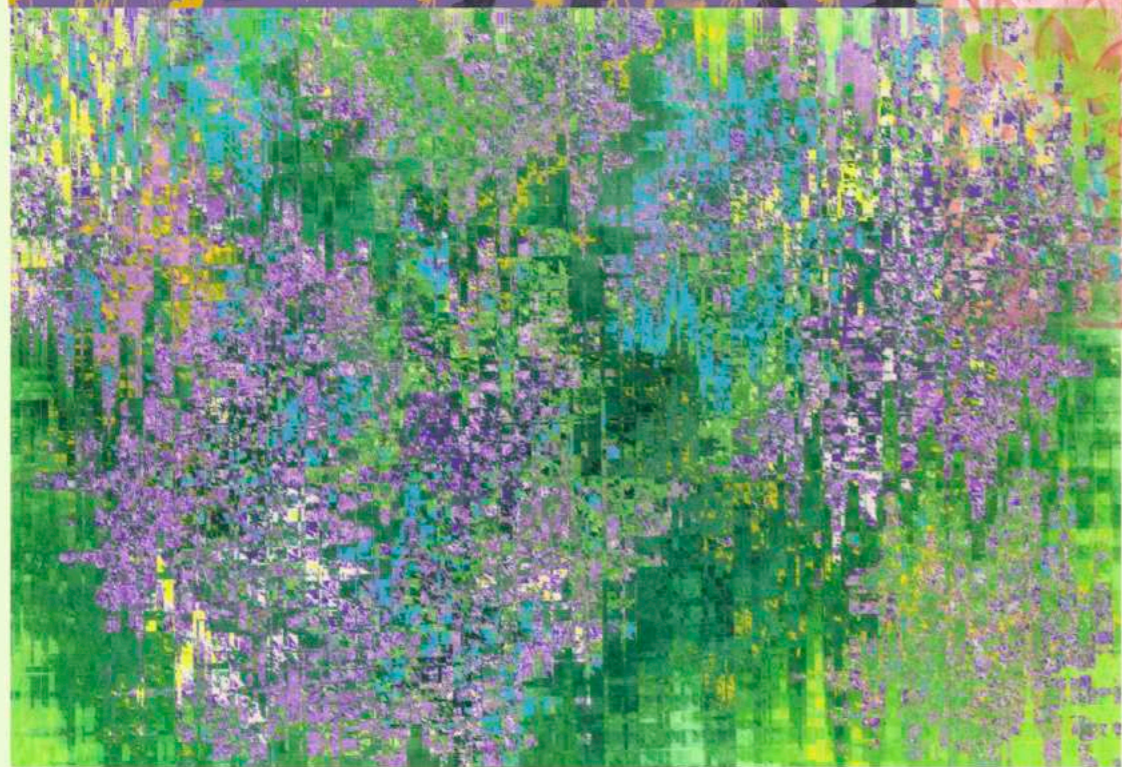
Inspired by the structural elegance of traditional Chinese yunjian, this print collection fuses the delicacy of papercutting with organic floral forms, reinterpreting cultural motifs through a contemporary lens.

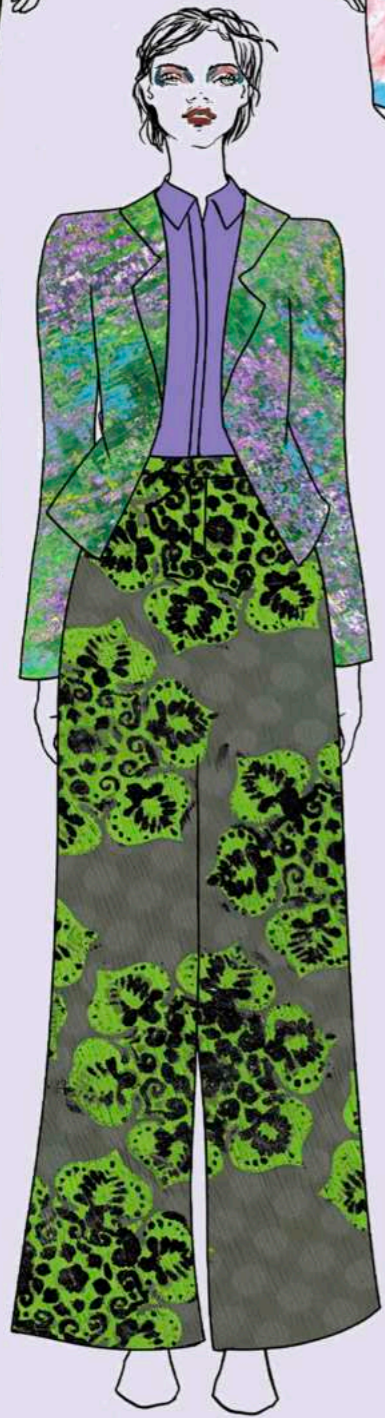
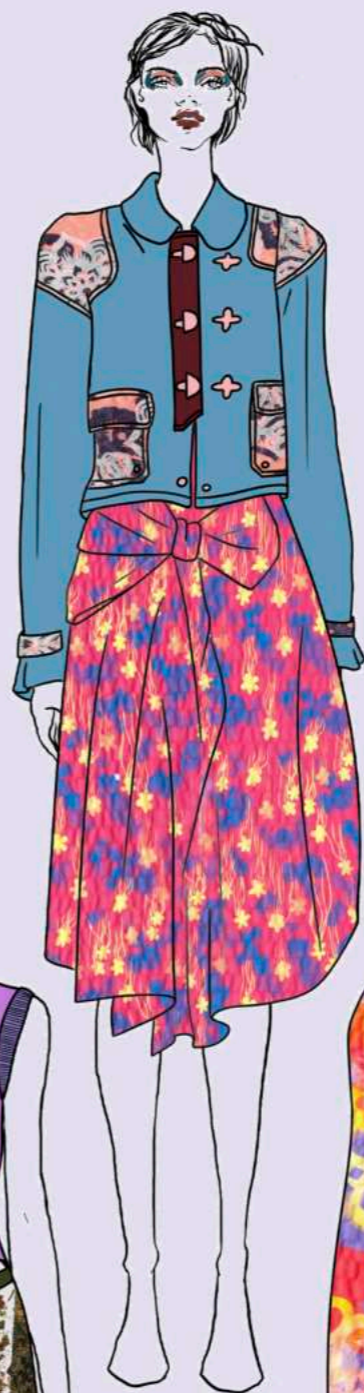
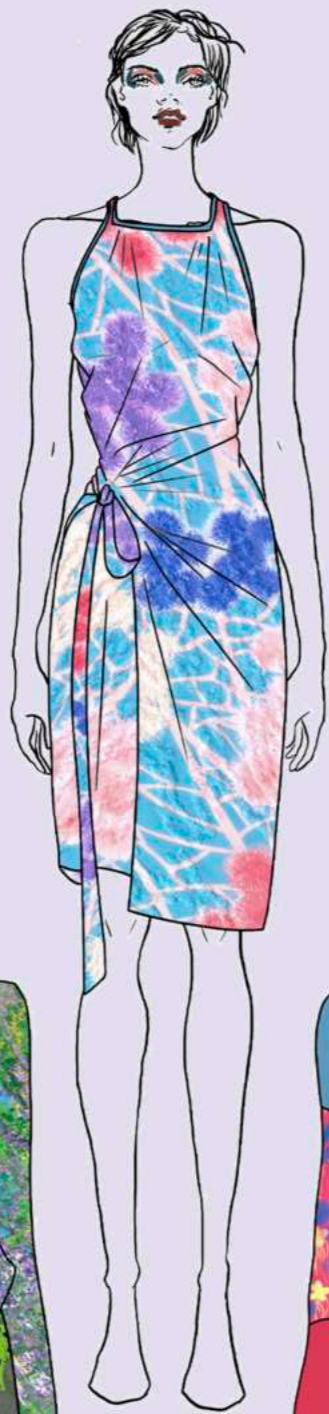




Colorboard







Essence of Nature

Flora



Petrified Forest



Boro Patchworkt



Animal



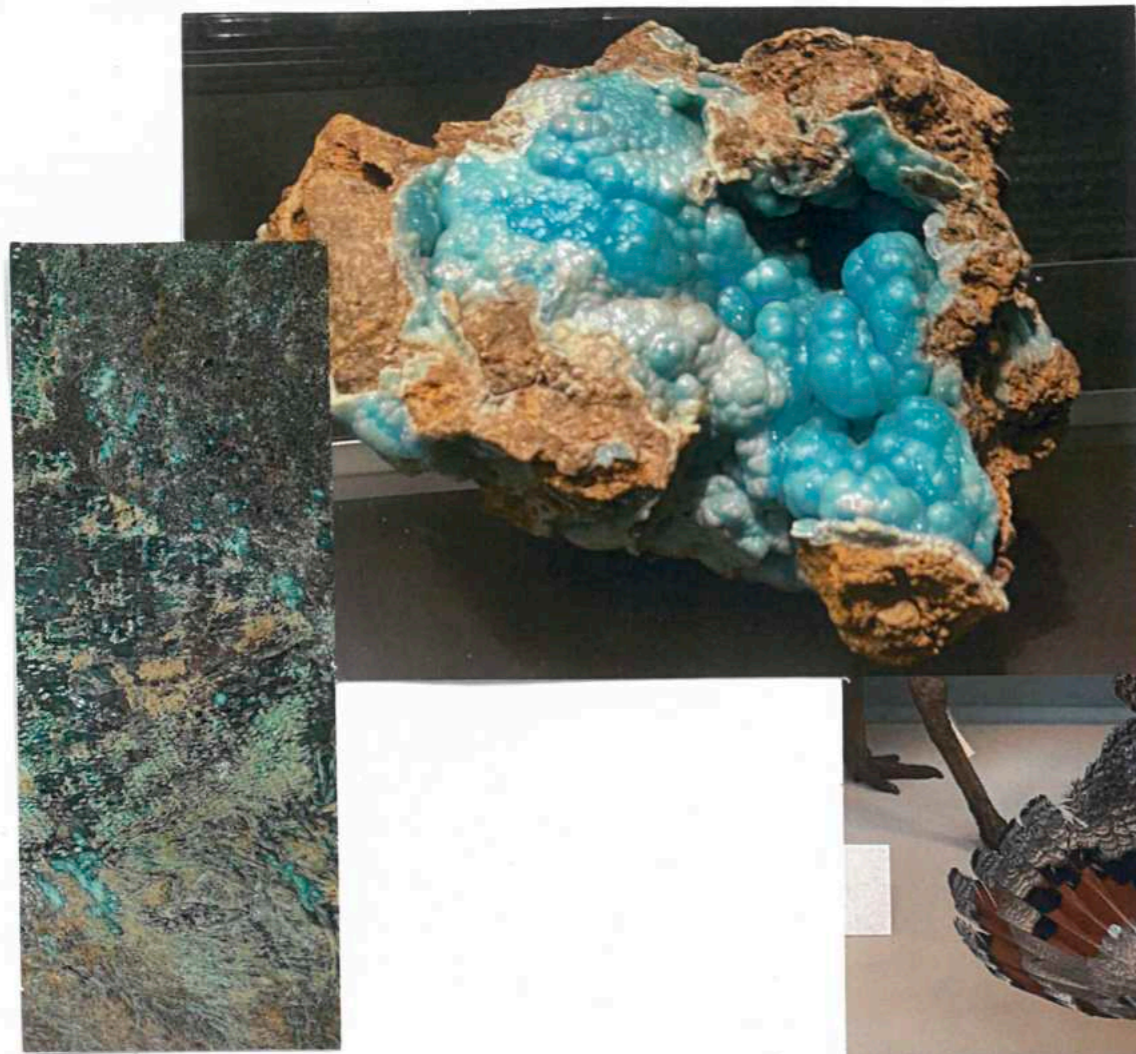
Decayed leaves



Shells

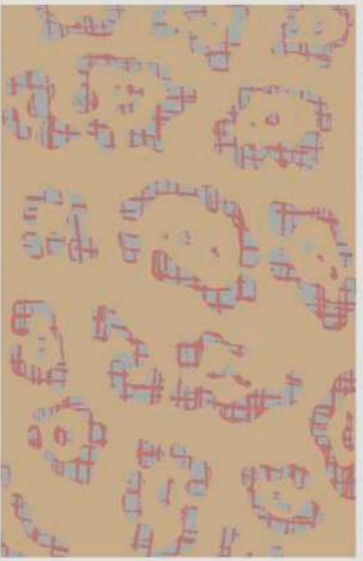
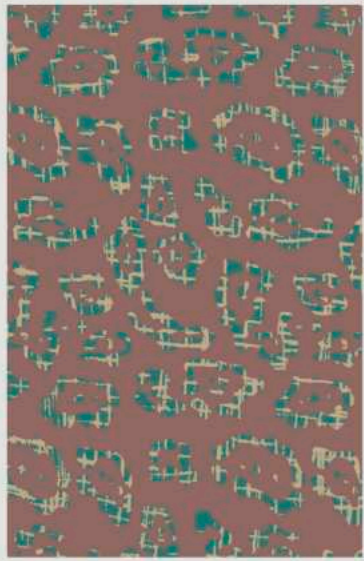
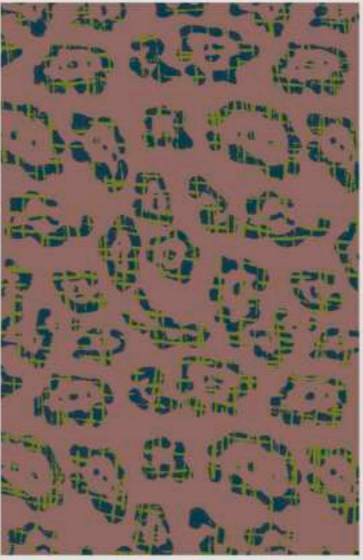
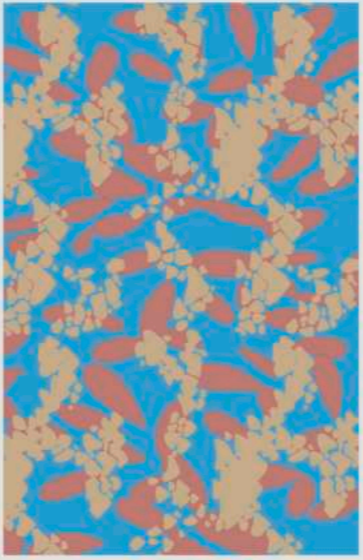
Nature Stone Pattern

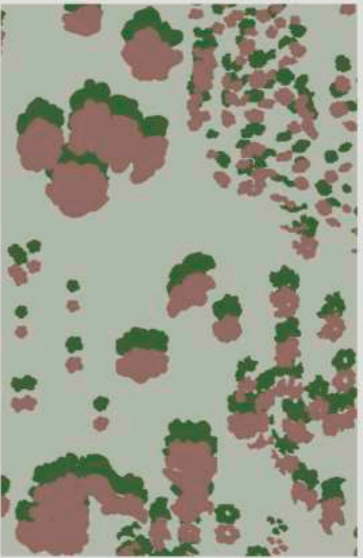
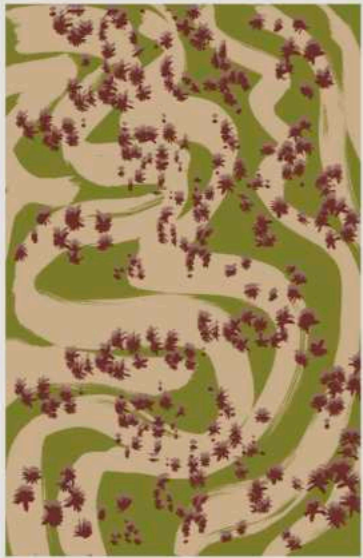
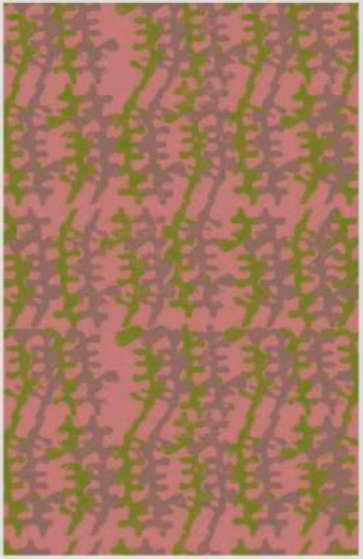
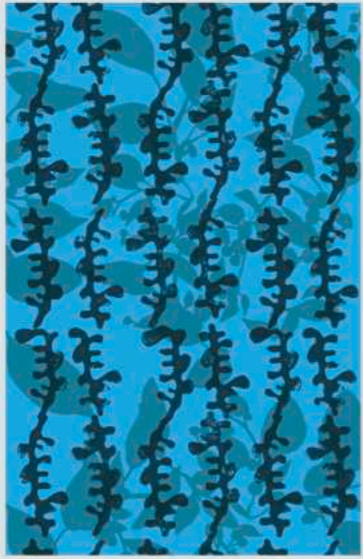
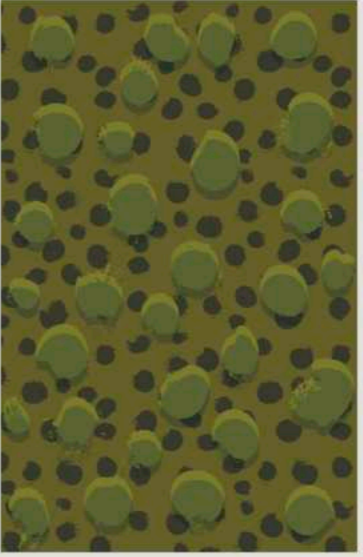
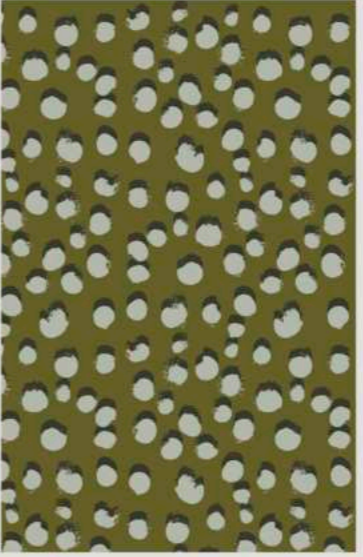


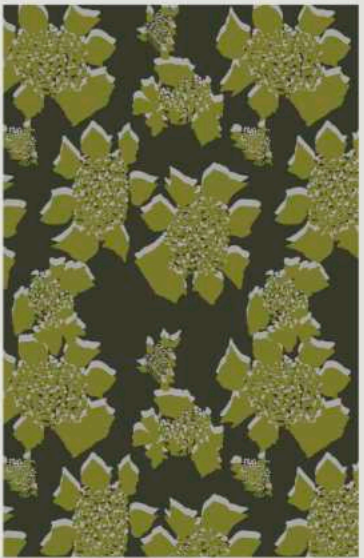


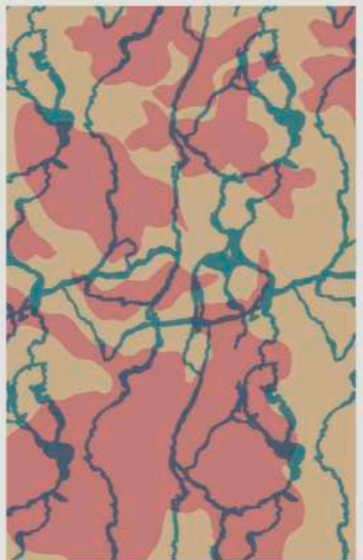
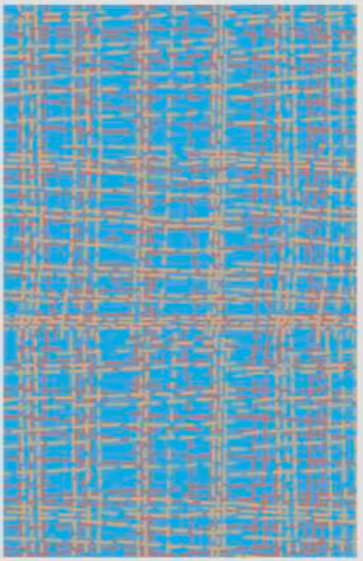
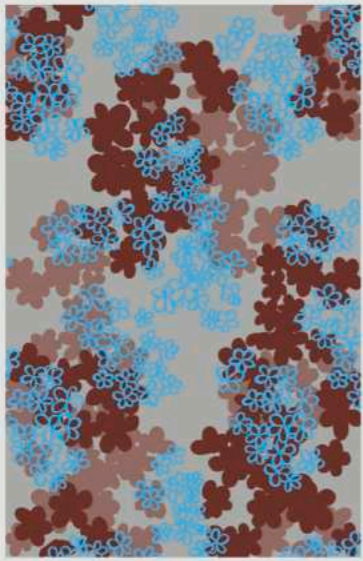
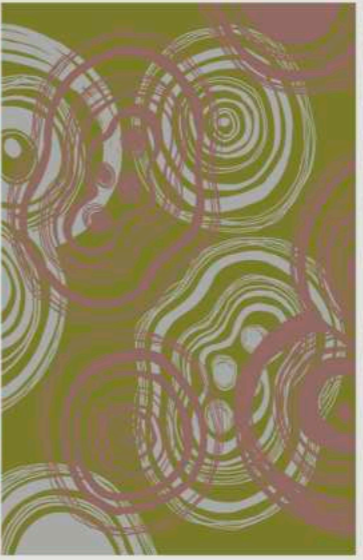
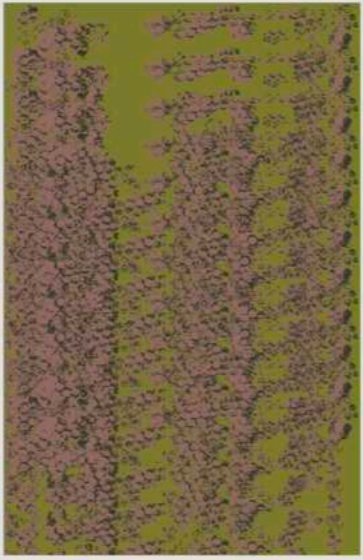
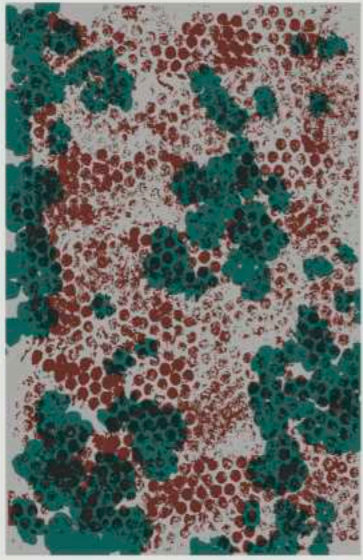
Colorboard

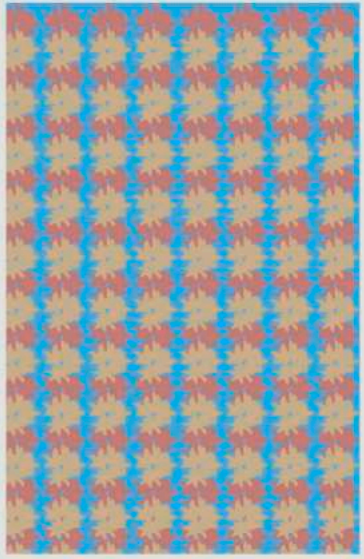
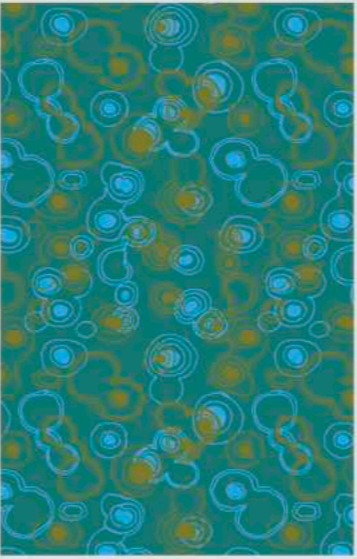
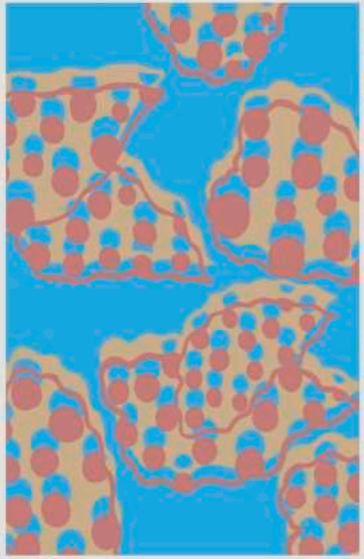
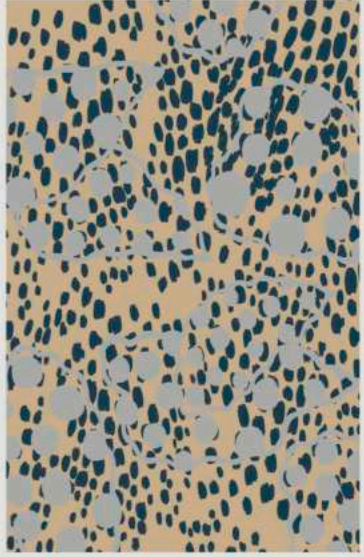
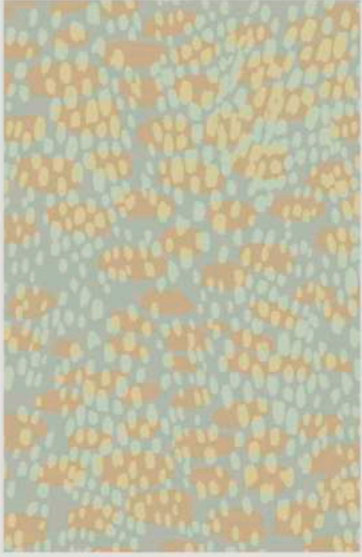
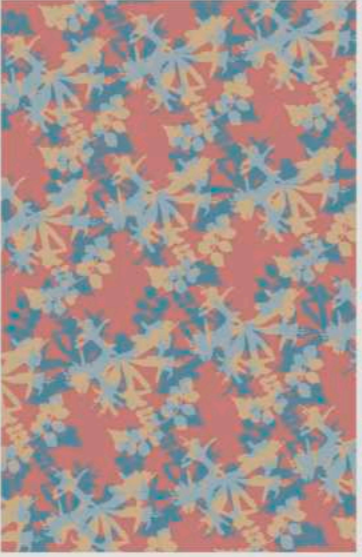














BA3: Doting Dreams: Flowers and Drama

Traces of Time (Collabration with Womens Wear: Jingzi Zhang)

Petals in the Shadow

BA2: Petals and Paper

Essence of Nature



