



Ch
L
S

Re
rie

C
re

Venice colored houses, Cindy Ye 2019



The Toy Project, Cindy Ye 2024



Andy Warhol Exhibition
Cindy Ye 2022



National History Museum
Cindy Ye 2025



CHILDISH REVERIE



Dressing Barbie, Carlo Spencer 2019

Orchids in the Kew Garden
Cindy Ye 2025



Vintage Toy Exhibition, Cindy Ye 2022



Through a *playful*, childlike lens, this project reimagines the everyday with prints inspired by vintage toys, doodles, and pop art — celebrating colour, nostalgia, and curiosity.





DRAWING
 and PED
 WITH ALL DIFFE-
 STYLE OF UES, NU-
 PLEXITY, DANUBE
 LEAMORE, ENER-
 TREMELY GENDERED.

Childish

02 THIS WOULD BE A NICE BOARD TO USE IN CORE UES/ GRAFFITI DOCU-
 SCIENCE CLASS, IN THE STYLE OF TRA- MENTARY STYLE, ERIC
 CEY EMIN, ENERGY-FILLED ILLUSTRATI- DESGAMPS.

04 A GRAPH OR MAP OF A CLASSROOM WITH IMAGES OF HANDWRITING, IN THE STYLE OF UES, EXTRAVAGANT IMAGINATION, QUEERCORE, POSTER, ORGANIC SHAPES, TOYEN, COLLABORATIVE.

Grotesque



PANTONE®
 233 C

PANTONE®
 2199 C

PANTONE®
 281 U

PANTONE®



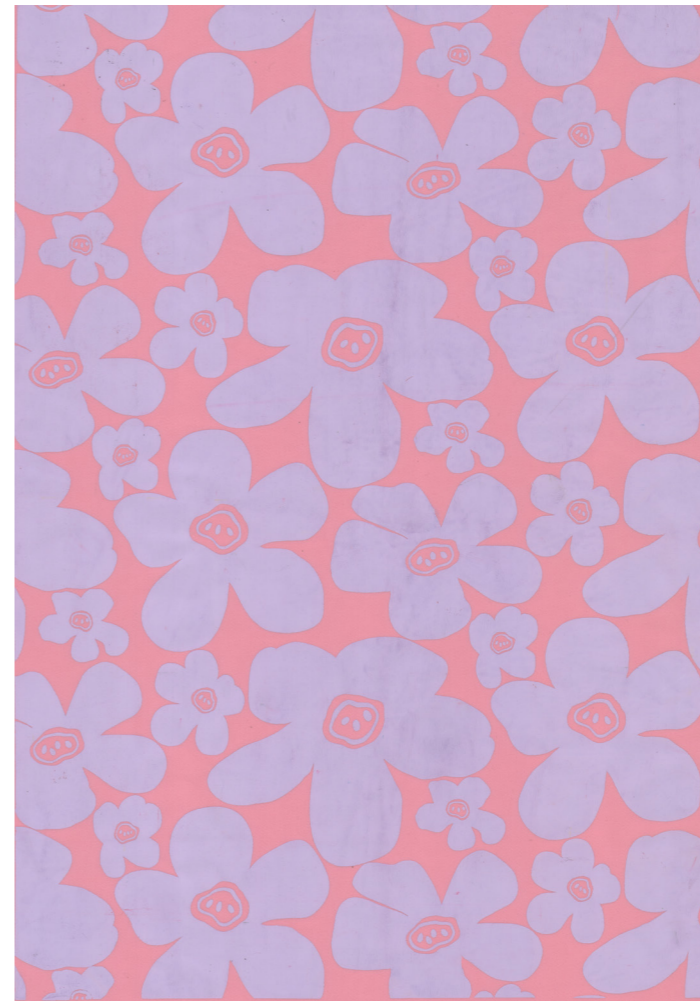
Kew Garden, Cindy Ye 2025



Andy Warhol Exhibition, Cindy Ye 2022

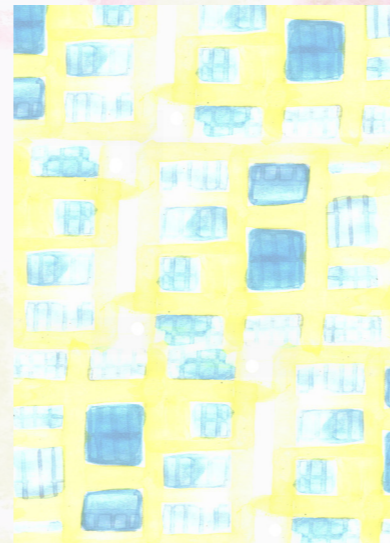
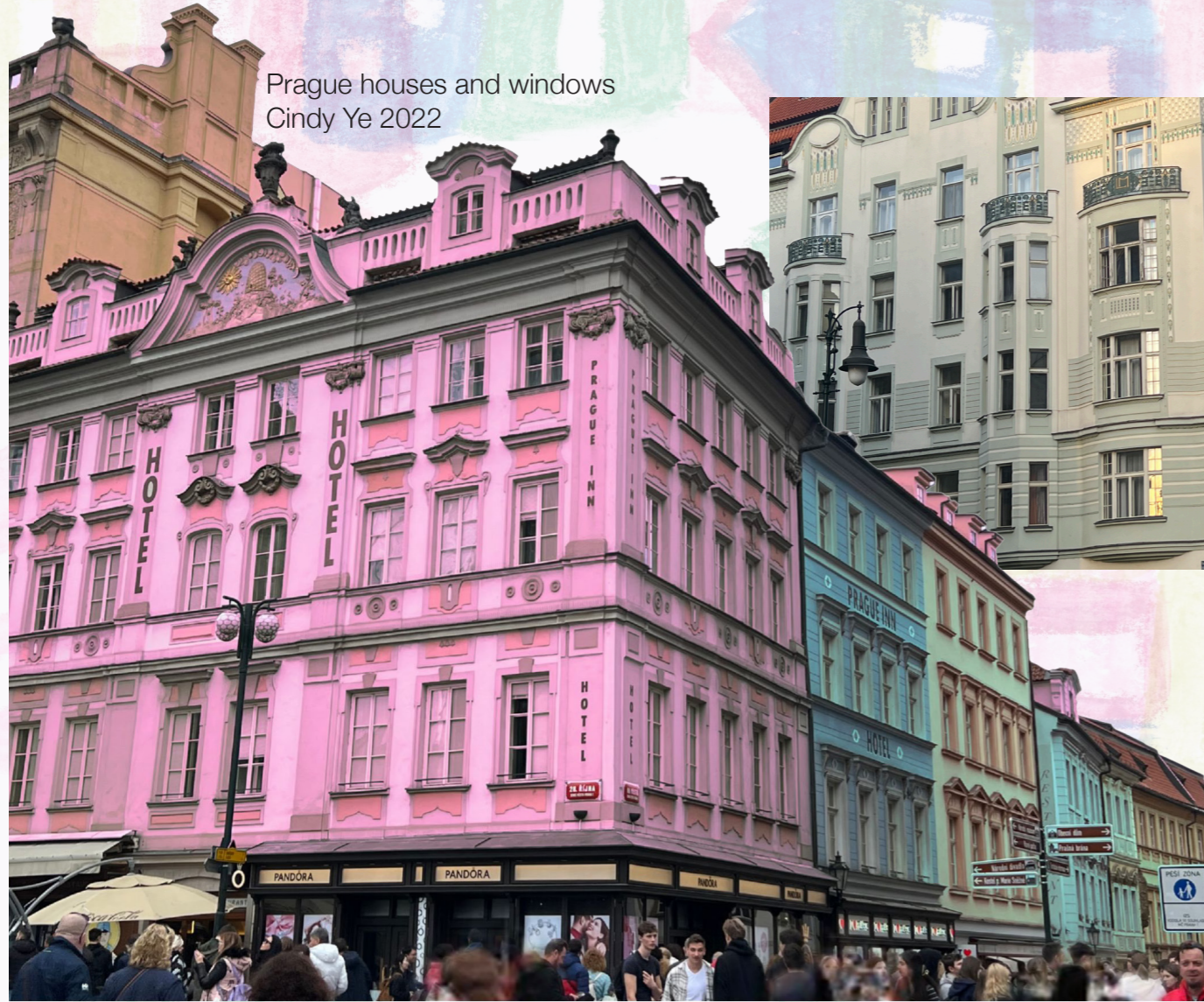
Orchid in Kew Garden
Cindy Ye 2025





Bloom Pop Collection Print Design

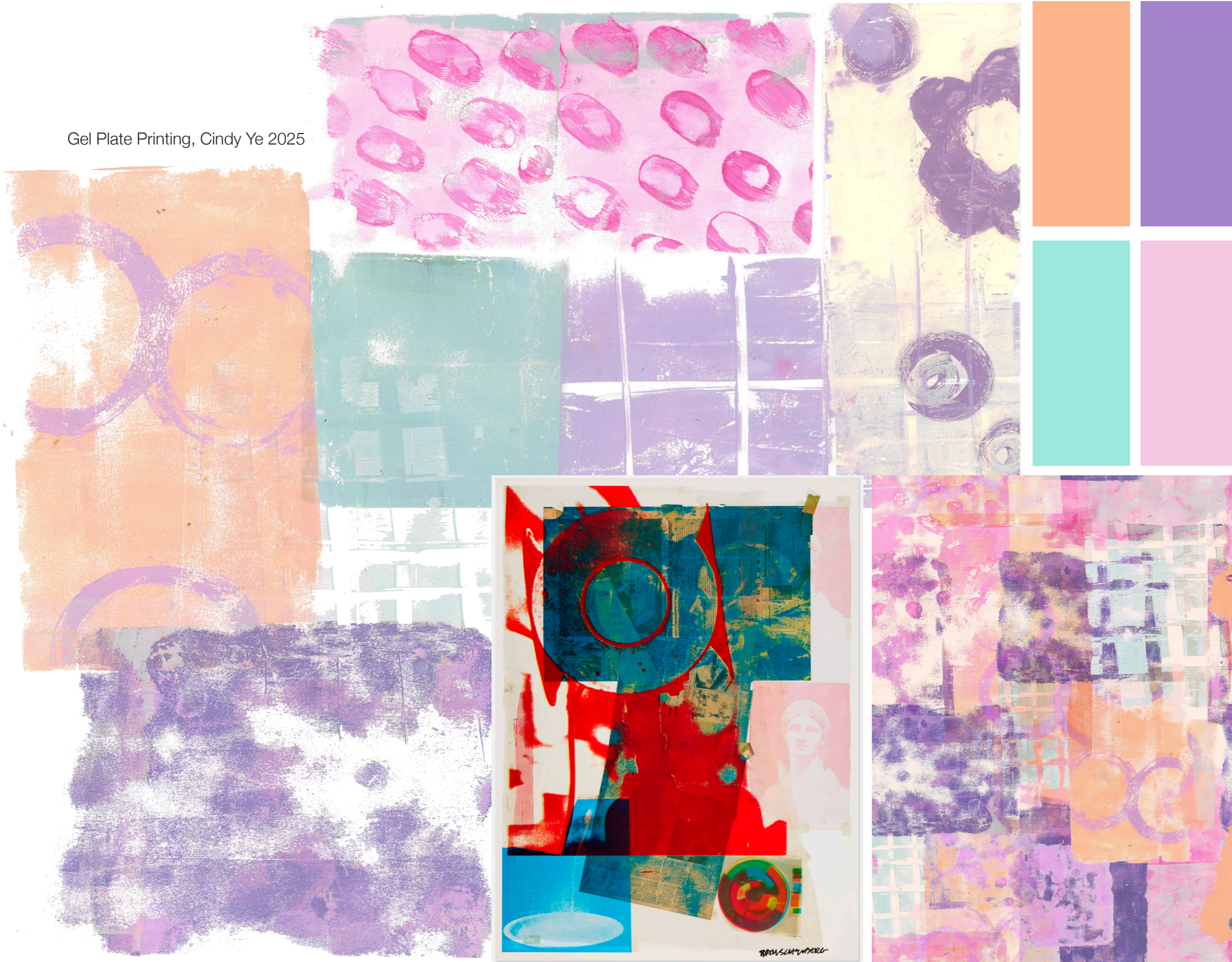
Prague houses and windows
Cindy Ye 2022



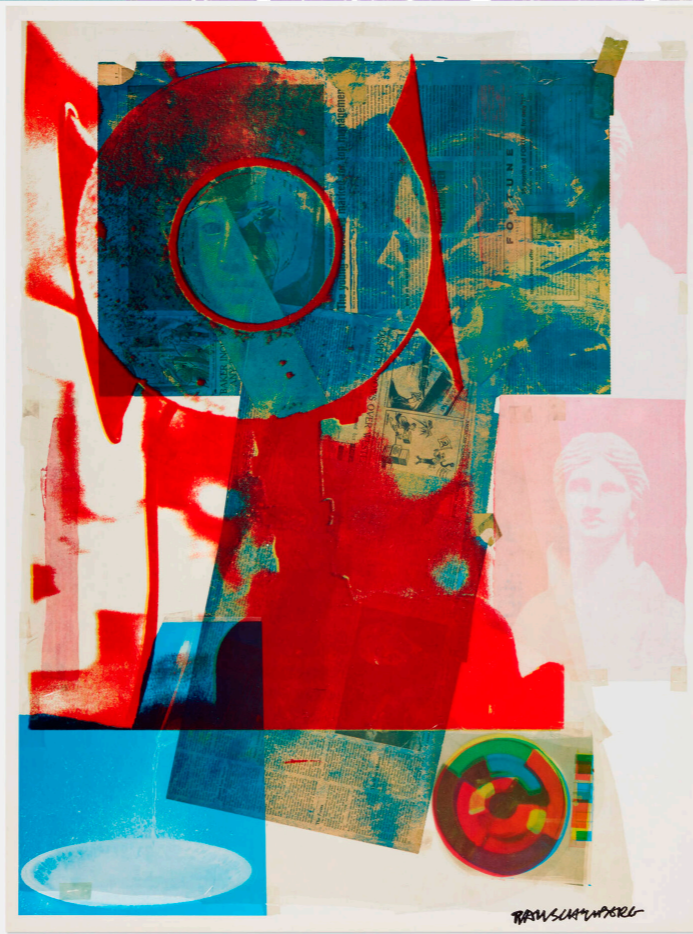


Gingham Garden Collection Print Design

Gel Plate Printing, Cindy Ye 2025



Young V&A, Cindy Ye 2025



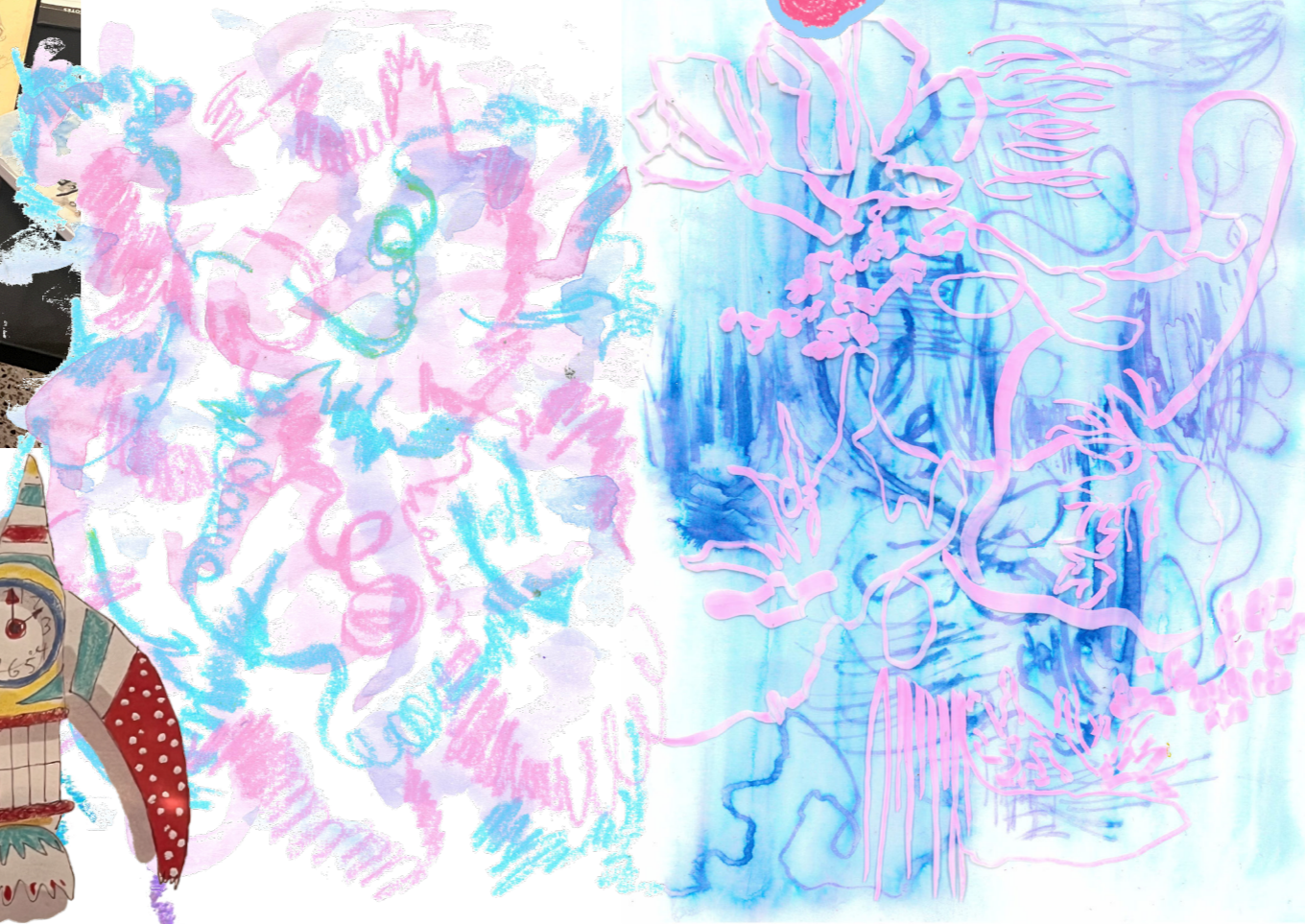
Local Quarry One, Robert Rauschenberg 1968



Candy Quilt Collection Print Design



Tim Burton Exhibition, Cindy Ye 2025





Whimsy Doodle Collection Print Design



CELINE KWAN

Celine Kwan SS2025



Celine Kwan is an ideamarket reference for this project due to her bold use of colour, playful motifs, and craft-led digital techniques. Her designs often merge nostalgic elements with experimental textiles, aligning well with the project's childlike, graphic-driven approach. Both share a focus on joy, individuality, and expressive storytelling through print.

Collina Strada fits this project's market as it embraces playful, expressive design with a strong emphasis on individuality and emotional storytelling. The brand often features hand-drawn graphics, whimsical patterns, and experimental textures—resonating with this project's childlike, doodle-inspired visuals. Its focus on sustainability and creative freedom also aligns with the project's values and mid-range, art-forward market positioning.

Collina Strada

Collina Strada SS2022



Collina Strada SS2025



Collina Strada FW2022



Collina Strada SS2024



Collina Strada FW2025



