

Connections

Natalie Hutchins-Emery

Final Year Portfolio; Connections

My research is based on my and my family's connections to places we have lived. Growing up my family has lived in many places making connections with places and their cultures. First, I started with the time my mother spent growing up in Hong Kong. It is always a place I've been interested in after hearing my mother and her sister talk about their time there. I was also inspired to research Hong Kong by my father who spent a portion of his 20s working and researching the geology of Hong Kong. I first started by looking into the infrastructure of the city and the contrast between the landscapes inspired by the maps my father kept from his research. This then led me to an artist called Kelvin Yuen. His photography encapsulated the contrast between the landscape especially between man and nature. I then went on to research Chinese calligraphy. I have always found the language interesting and artistic. I started by looking into historical scripture and then art made with calligraphy incorporated within the art. From there I discovered that most Chinese words are written with 5 symbols and the flag of Hong Kong has the Bauhinia flower which symbolises this as well as the five regions of China. This further led me to research into native flowers in the region.

My research has led me to have many design ideas between exploring fabrics and pushing the boundaries of the body. Taking sheer fabric and overlapping them to resemble petals as well as the flow of the clouds over the landscape. I want to explore these drapes and create structure then further in them by adding boning or interfacings in certain areas to give rigidity to what looks like a drape. I also want to explore creating tailored elements in my looks. Taking inspiration from the building and man-made side of the city and the lines within the geographical maps. Creating style lines and hemlines that are inspired by these landscapes and skylines. I am inspired to create looks that are powerful and structured with elements of drape and fabric manipulation.





The view to the northwest we had from Baguio villa across Hong Kong harbour towards Tsuen Wan and the New Territories beyond.



My mum, aunt and grandma in the playground at the Baguio Villa the first flat they lived in.

General view of Victoria harbour over to Kowloon from Hong Kong Island taken from Victoria Peak.



My mum and aunt were on their back patio in second flat they lived in at Mount Butler.



Family Photos In Hong Kong

My mum, aunt, grandad and Step grandmother. Christmas day 1984



Unknown, but I think taken from Cheung Chau (one of the outlying islands back to Lamma Island and Hong Kong Island).

My mum, aunt and grandma outside in Baguio Villa.



Photos of my mum receiving an achievement scroll as scroll. She was 7 here.

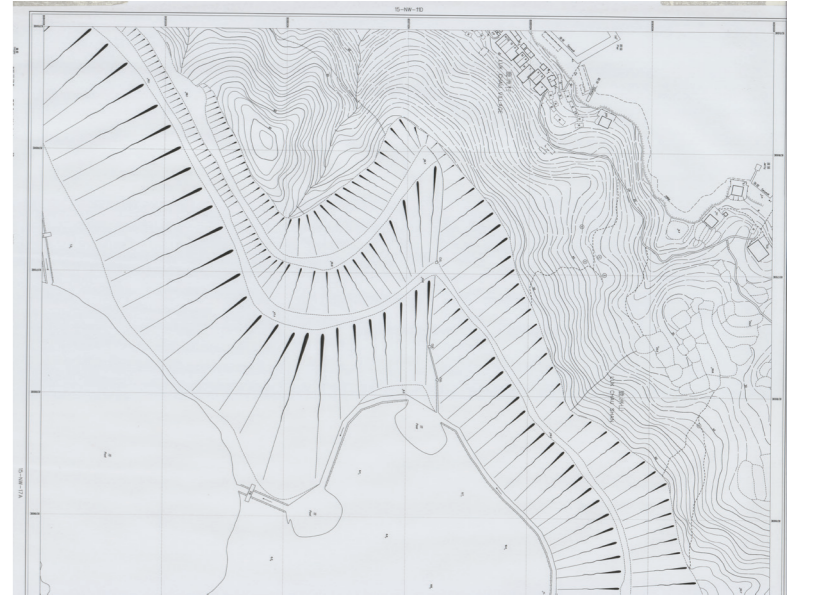
Deep Water Bay



Deep Water Bay is located on the southern shore of Hong Kong Island. My father researched this area looking into the geology of the area and what it was made up of. Using these maps, I want them to inspire the structure in my designs and to inspire silhouettes and style lines.



Picnic Bay is located on the east coast of Lamma Island. My father researched the quarry on the island and would walk miles to get to the quarry and take samples. I will take the lines and clusters to inspire my drapes through my design process.

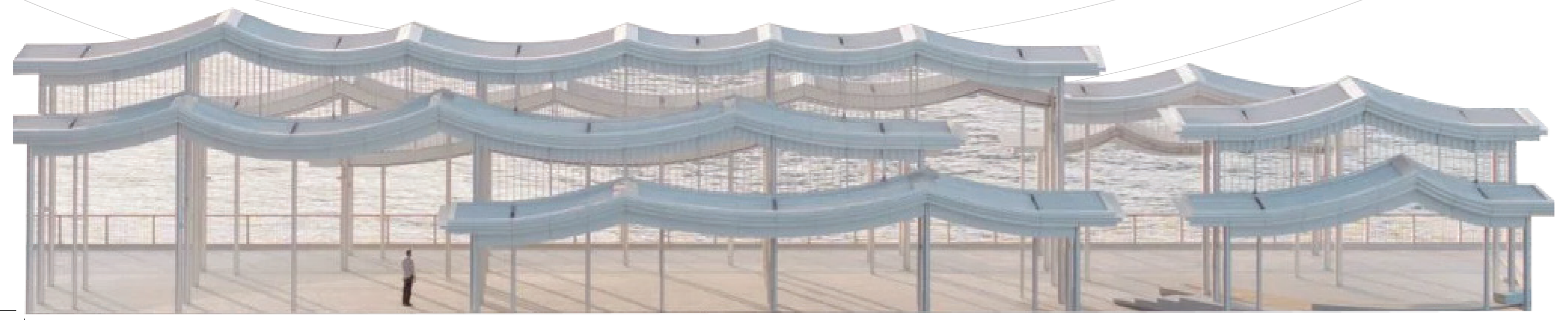


Picnic Bay

Canopy On The Docks.



The Local studio's new office works have made a wavy canopy across the Cheung Sha Wan promenade. The design references the harbour's past referring to the pattern of boats appearing on the pier. Was made to bring people to the harbour and have the opportunity to create a community space.



Chamfered Skyscraper



Built on the old Kai Tak Airport. Snohetta took inspiration from the textile and tailoring manufacturers in Hong Kong for this design. the shape of the chamfered edges is a reference to the textile cutting and the face of the building is a reference to fabric draping.





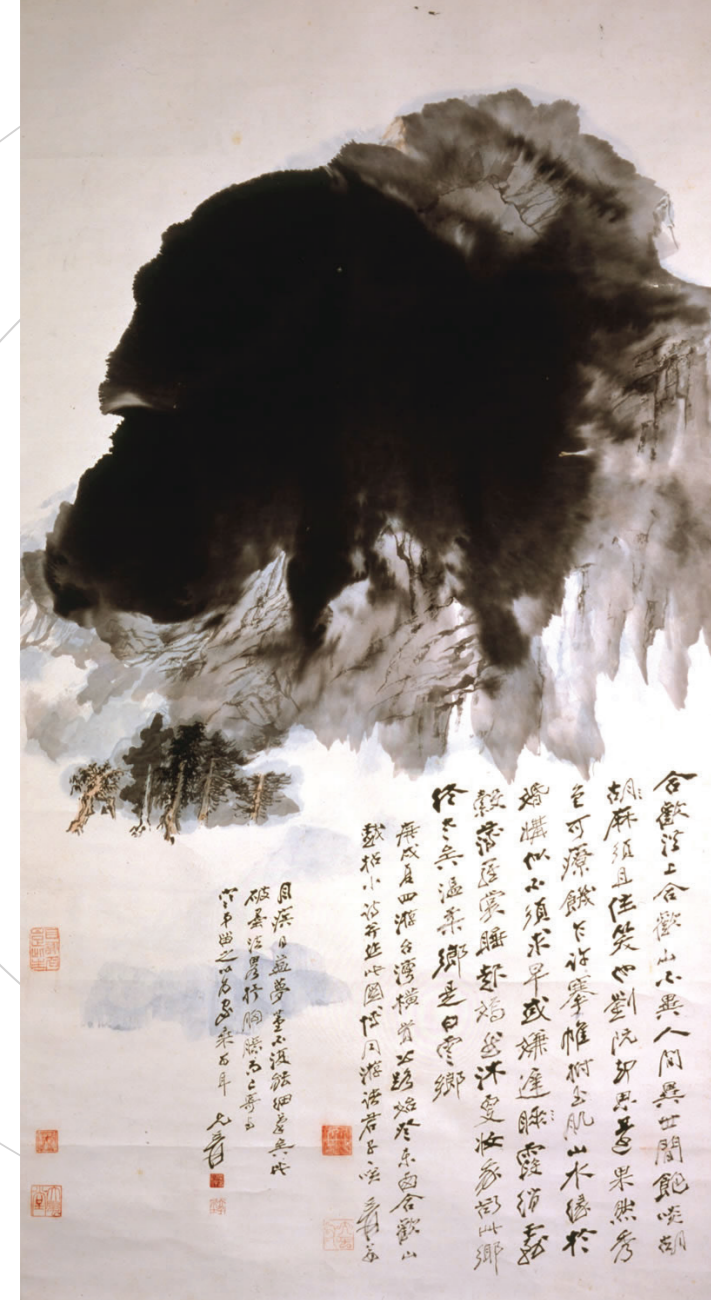
Kelvin Yuen is a photographer who was inspired one day when he saw the clouds from above on a hiking trip. This sparked his interest in contrast photography and exploring the contrast of nature and man especially in Hong Kong. Hong Kong was the start of his landscape career, and he has now taken further to other countries and explored their landscape.

Kelvin Yuen

Kelvin's work always has nature incorporated and the beauty that it holds. His work shows the contrast in Hong Kong between man and nature. I will incorporate these ideas into my designs. Exploring structures that go against the form of the body, using a fabric in the way is not always used for and instead explores the boundaries of the materials.



Zhang Daqian. 1970. Daqian focused on traditional brush and ink work imitating the work of Shitao, he then changed to splashed ink landscapes and then would work over the top of them.



Gao Jianfu. 1926. This painting is done with vigorous and rushed brush strokes, unlike the normal traditional techniques. He used the change in atmosphere to express his melancholic feeling of passing time and decay.

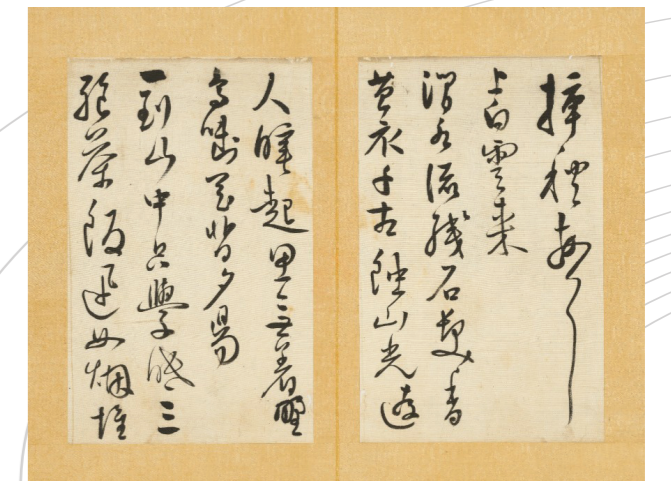
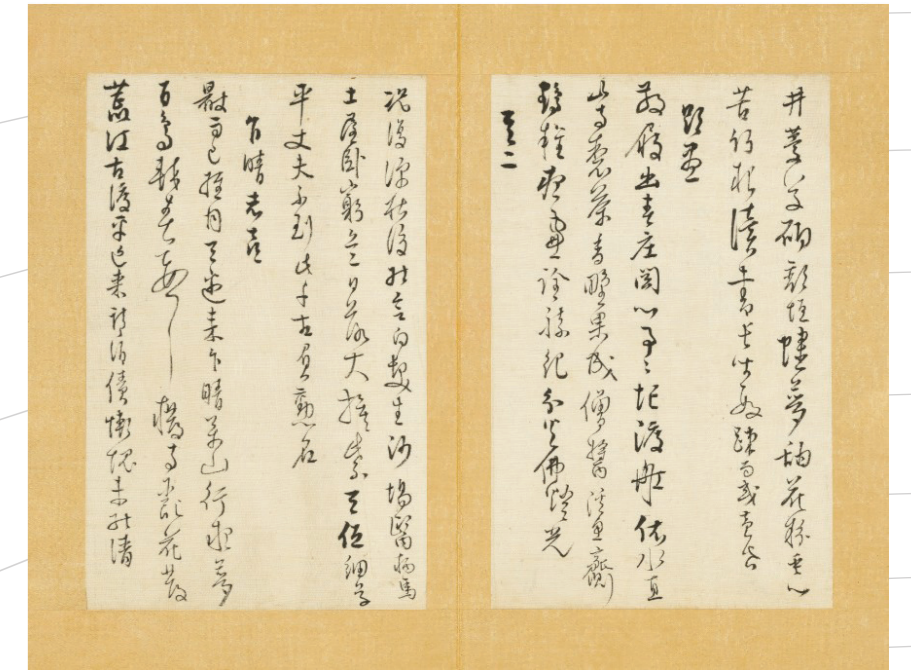
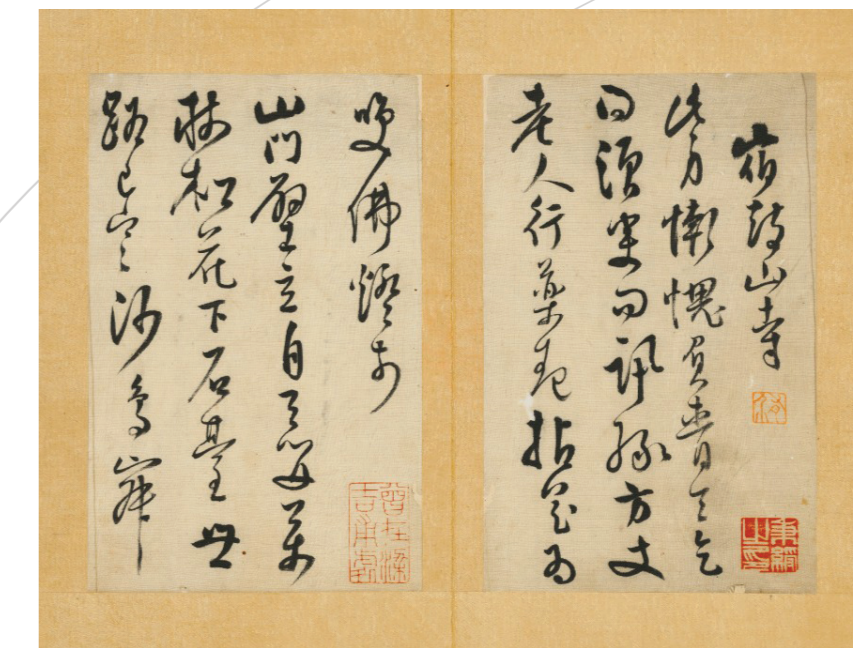
Traveller in Snowy Mountains by Su Renshan. Renshan worked a lot with woodblock prints. His eccentric personality shaped his style.



Chines Art

calligraphy

XU YOU (1620-1663) poems in cursive script. Ink on silk. Calligraphy was a premodern art in China. Calligraphers developed techniques using only brush and ink, the oldest surviving scripts date over 3,000 years from the Shang dynasty. early 10th-century calligraphy was key in the imperial civil service examinations. Good brushwork could lead to power and prestige within society. I want to use this to inspire different layers and hemlines within my designs.



Bauhinia Flower



Bauhinia Blakeana, also called Blakes bauhinia, is a combination of Bauhinia Purpurea and variegata. The flower is the emblem of Hong Kong and sits on the Hong Kong flag. The five petals and stars resemble traditional Chinese symbols and the five major regions of China. I want to use the number 5 to help inspire my designs.

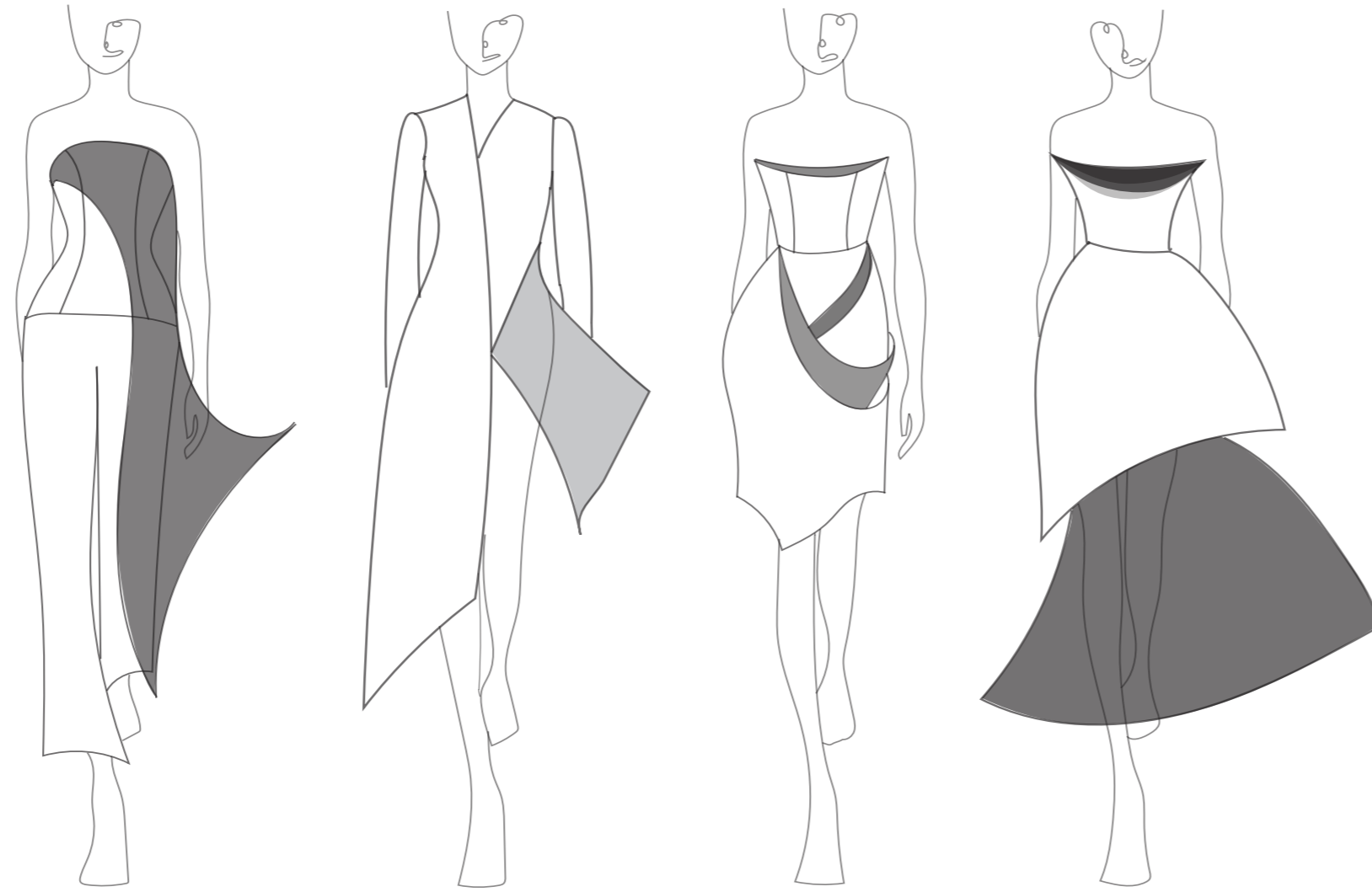


Strong independent women.
40,000 a year.
25-45 years old.
Single.
Living in a city in a townhouse.
High fashion sense shopping with bespoke brands.
Shops also in brands like Burberry and Chanel.

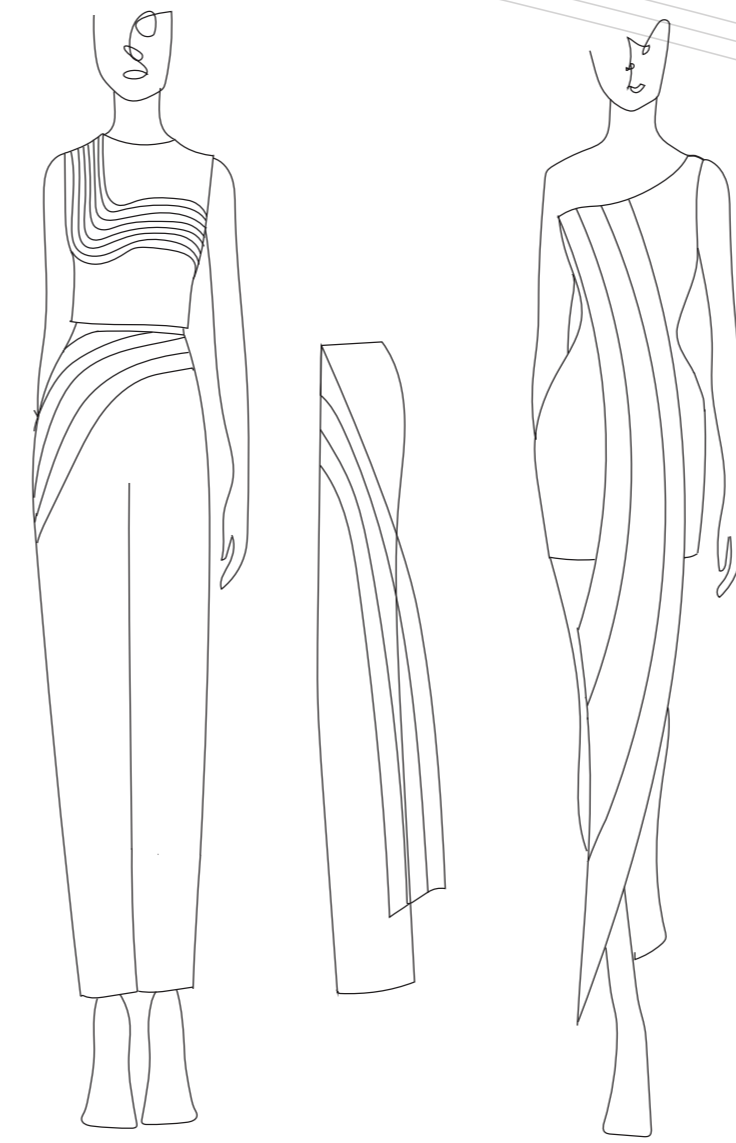
Consumer Board

Design Development

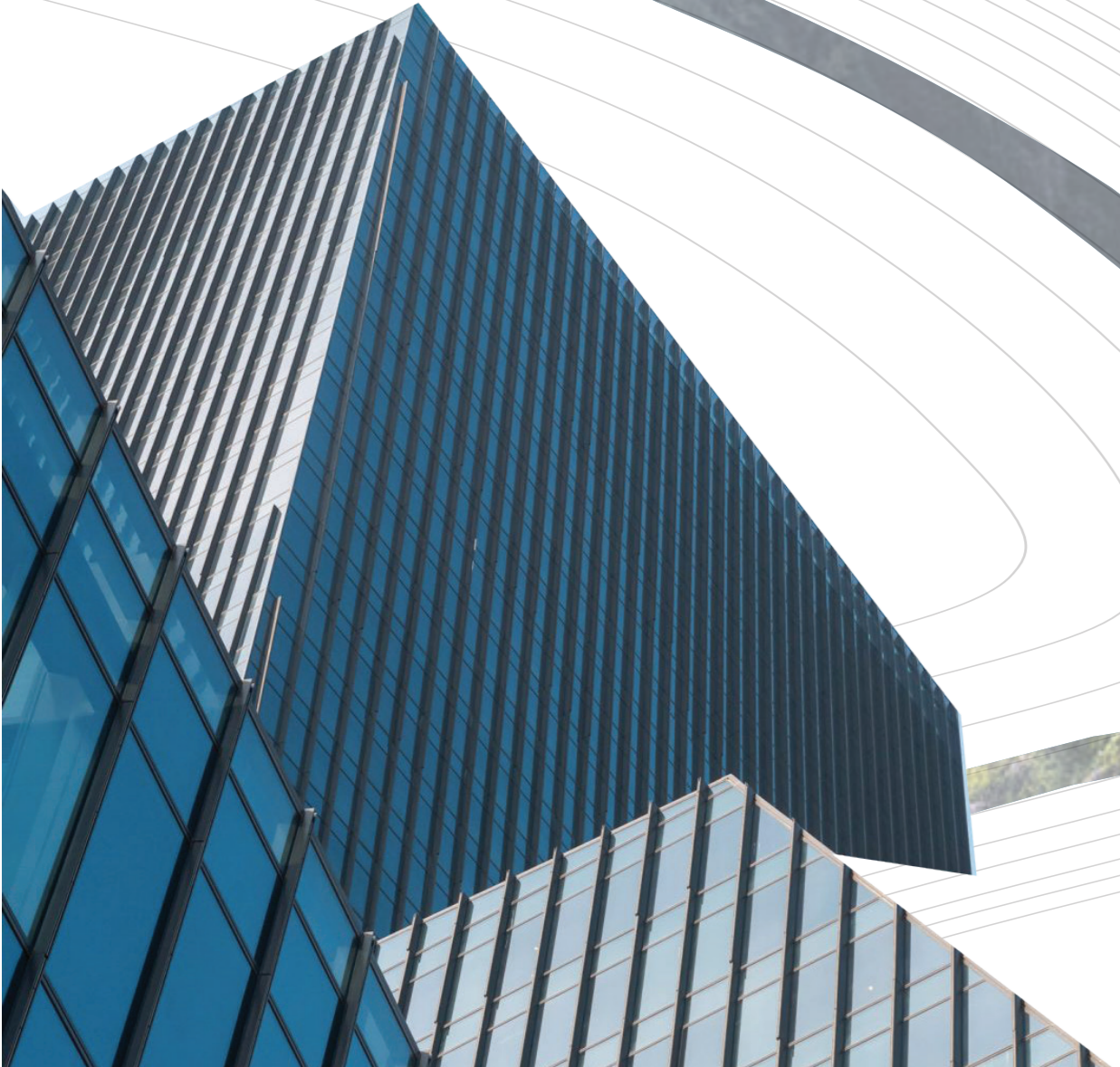
Shere panels with boning to show the contrast of nature and man.



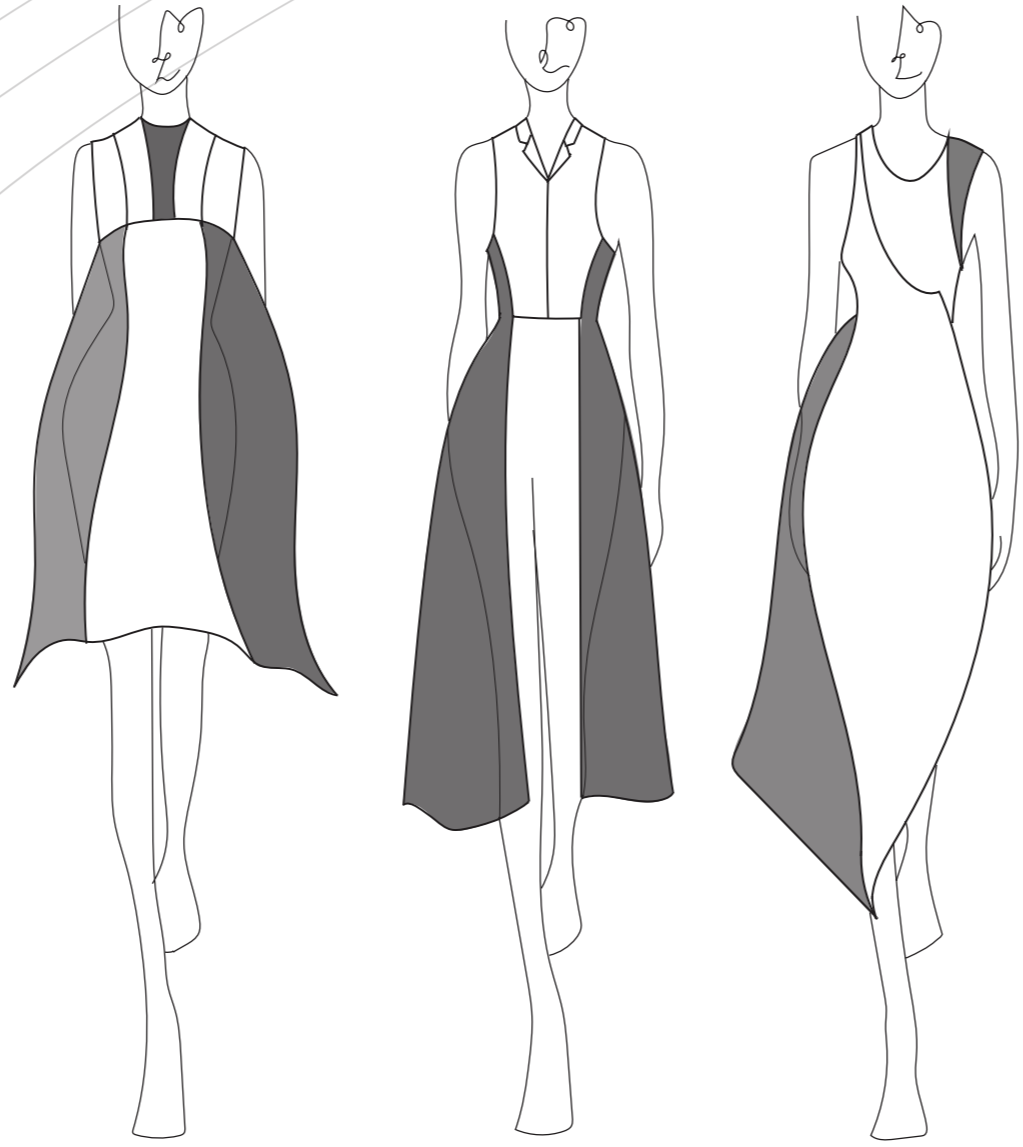
High-structured and tailored elements to show the infrastructure of Hong Kong.



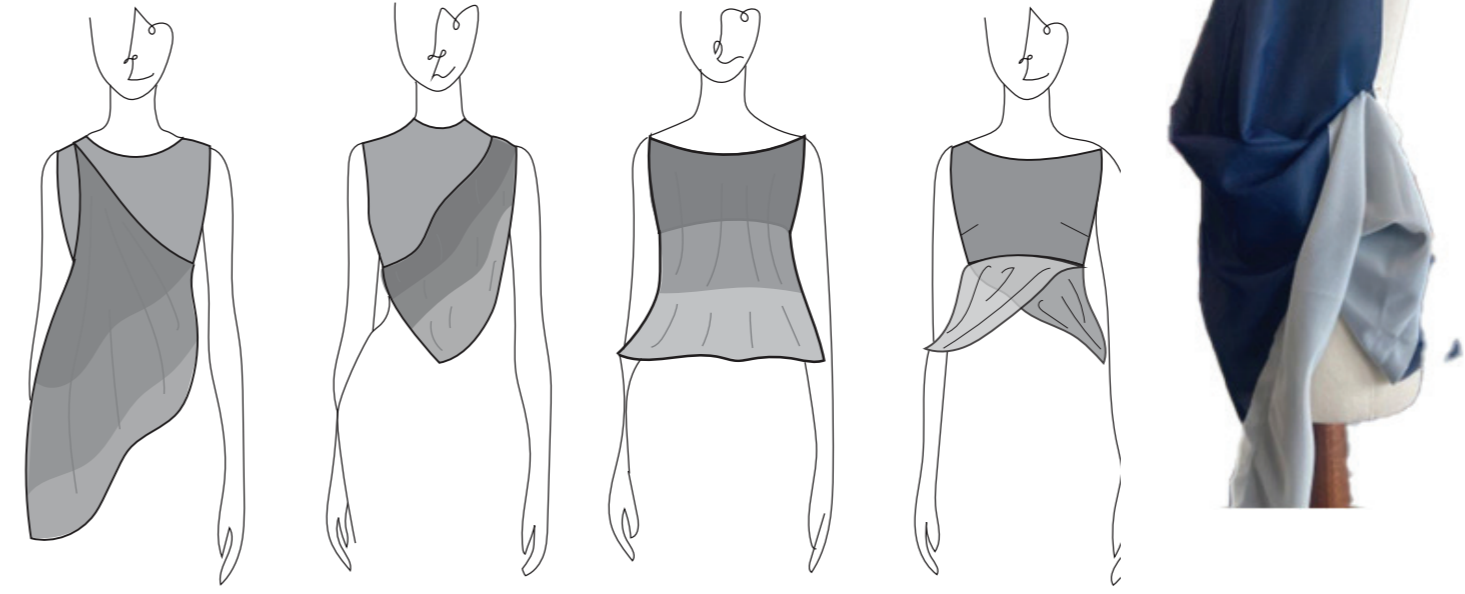
Ribbons are sewn in and left to drape. By connecting the garments in different ways, ribbons represent the connections my family has with Hong Kong



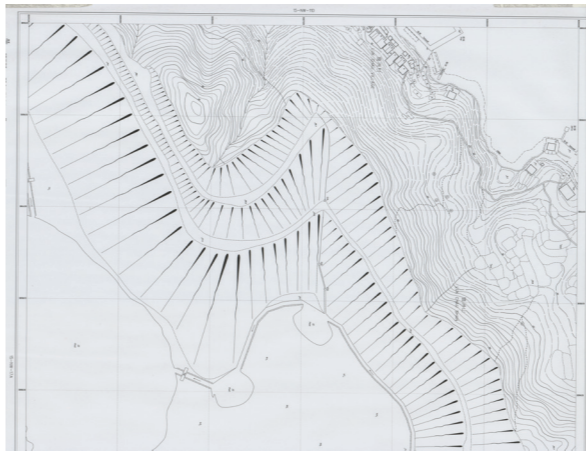
Design Development

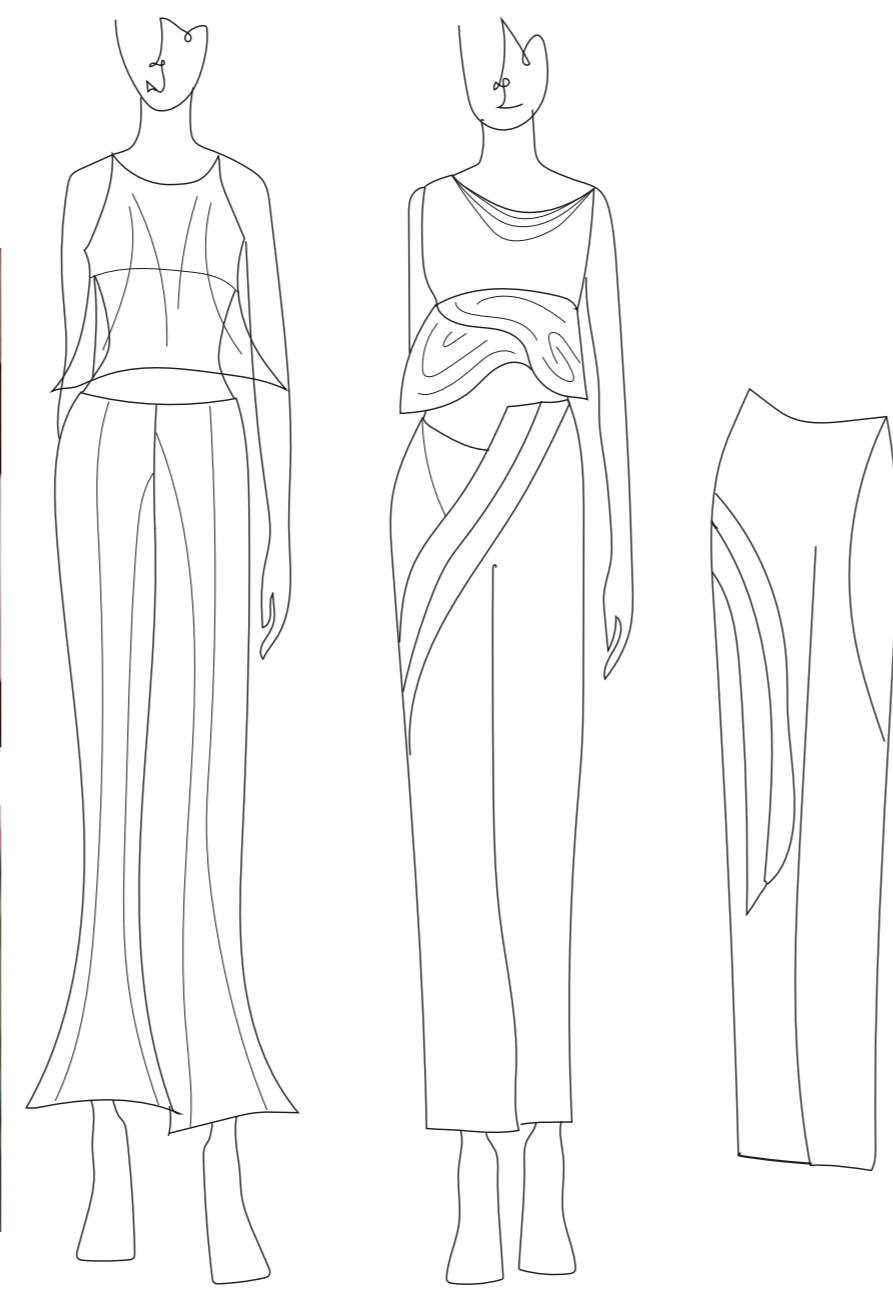
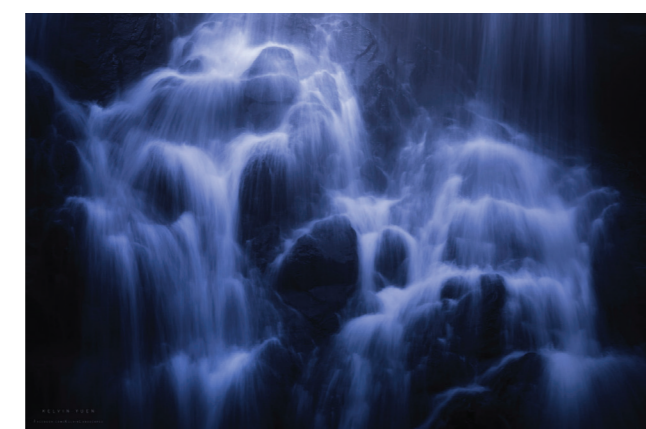
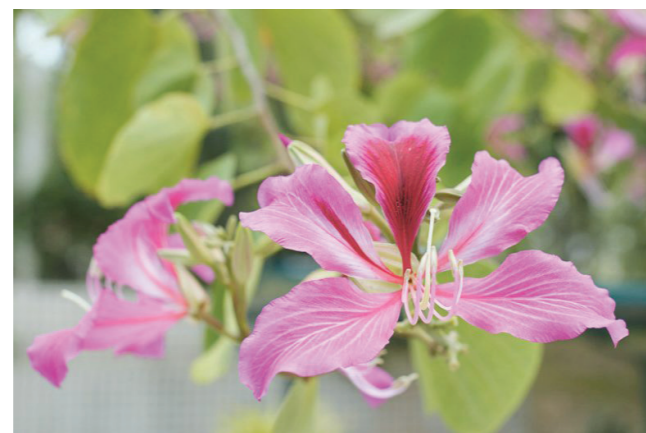


Shere panels with boning channels to create volume and flare.

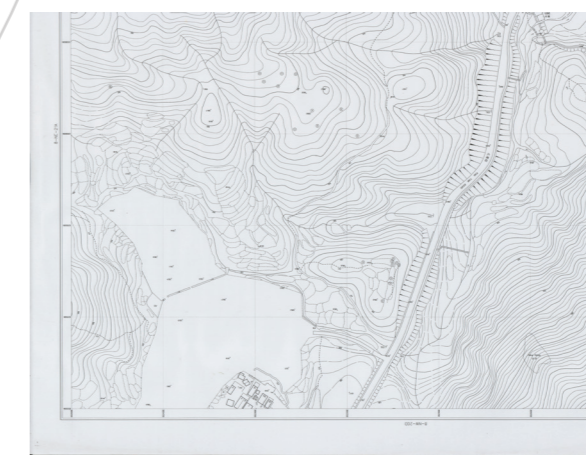
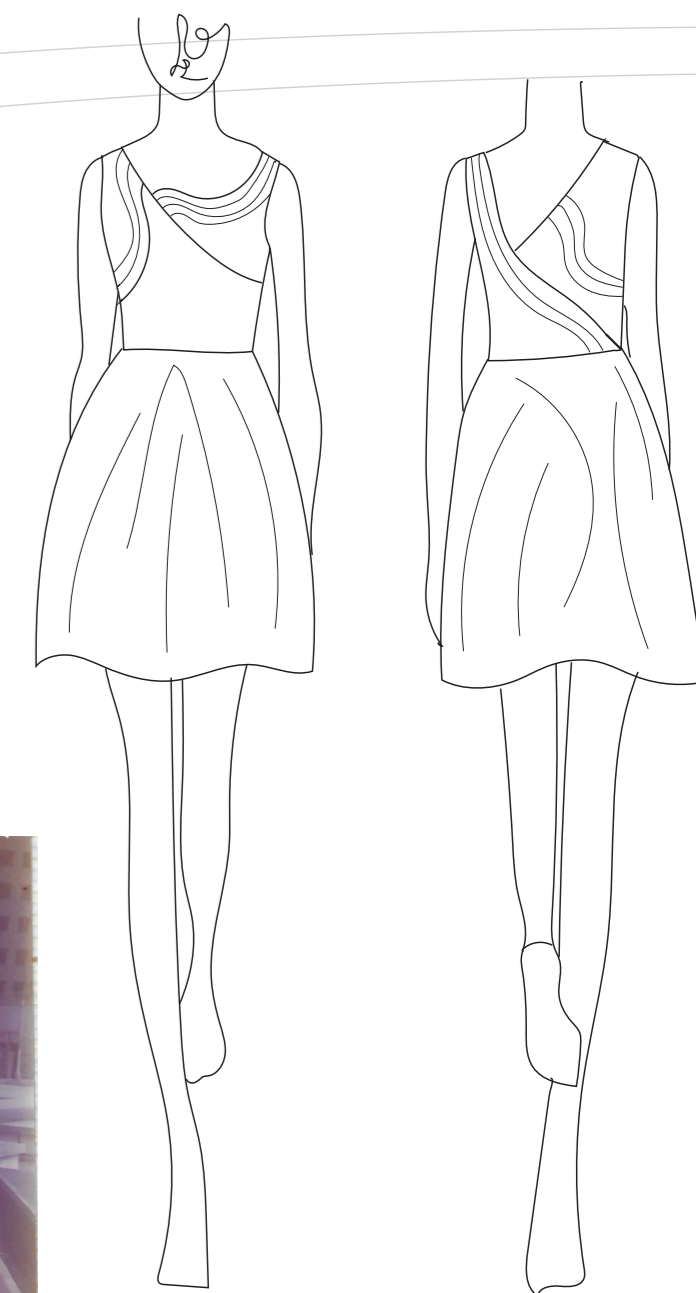
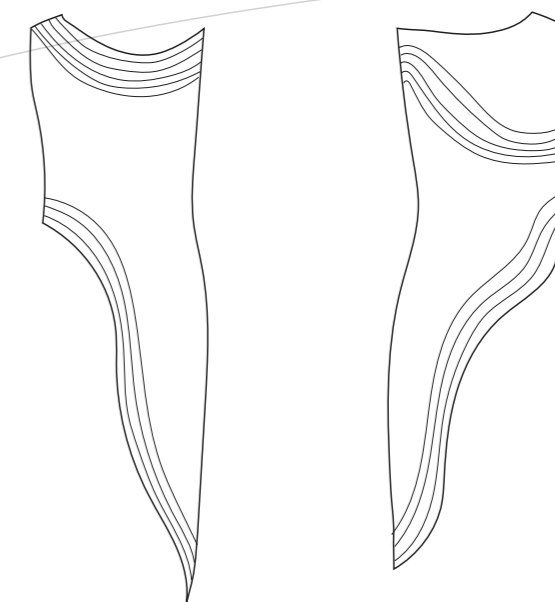


Multiple layers of fabric are sewn together with contrasting colours

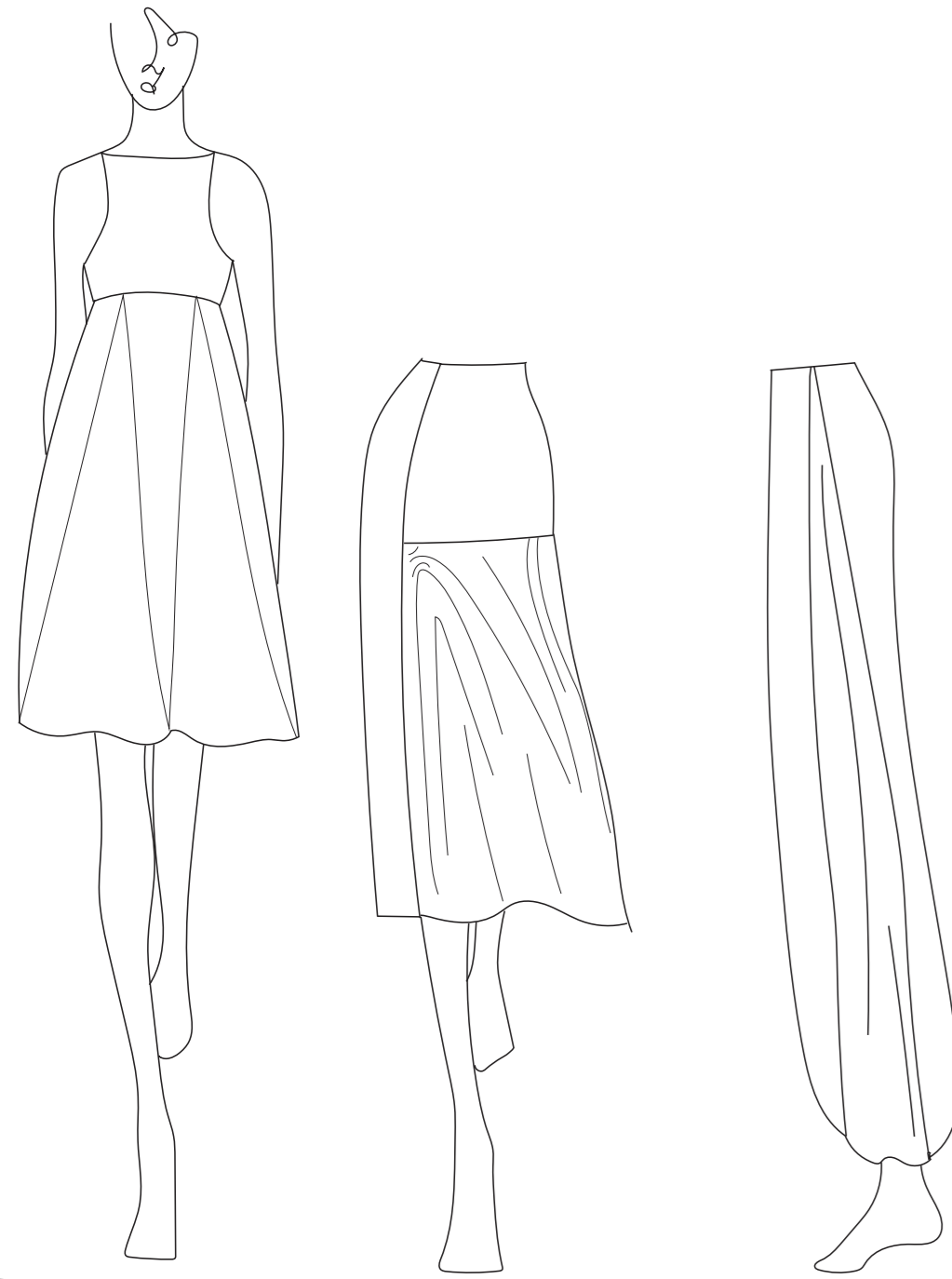




Layers of sheer fabric and ribbons show the structure and delicate nature of Hong Kong.



By connecting the garments in different ways, ribbons represent the connections my family has with Hong Kong



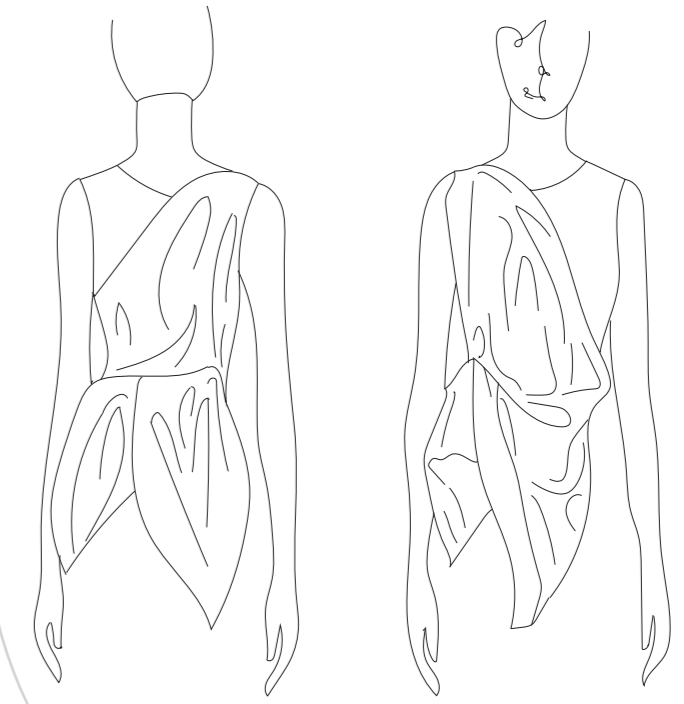
Panels to show the delicacy of nature showing through the city



Design Development

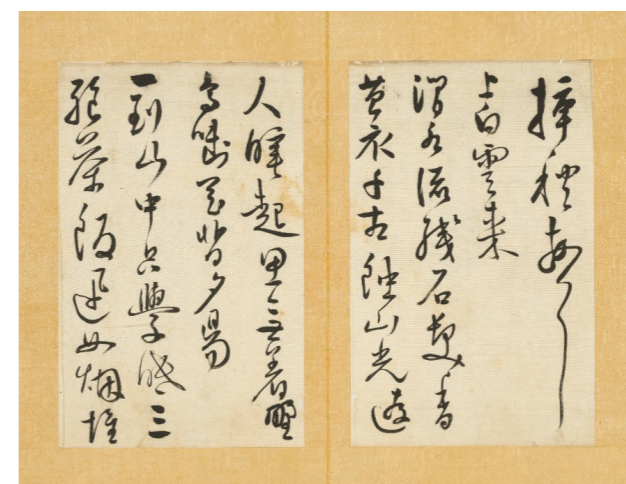
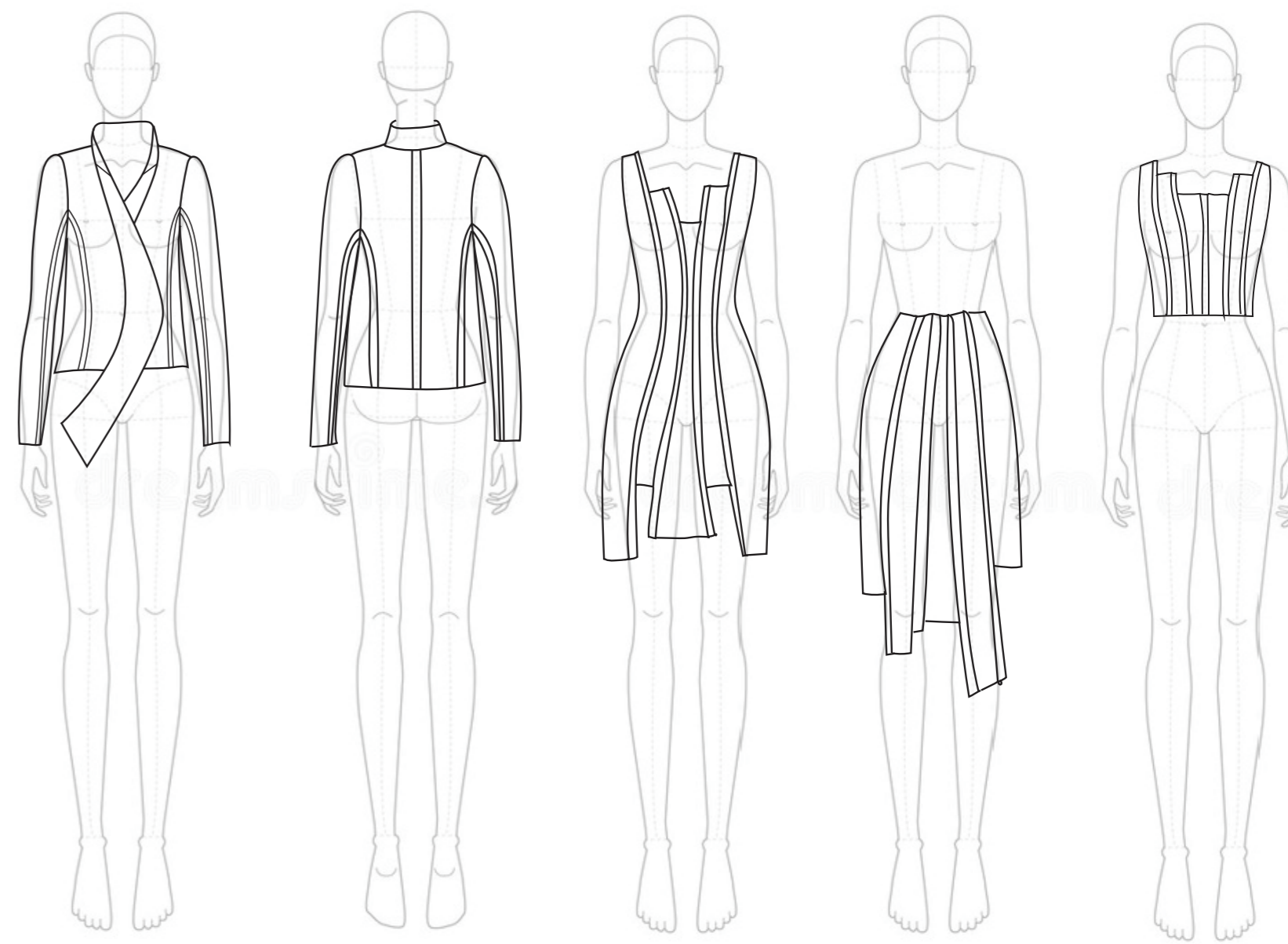
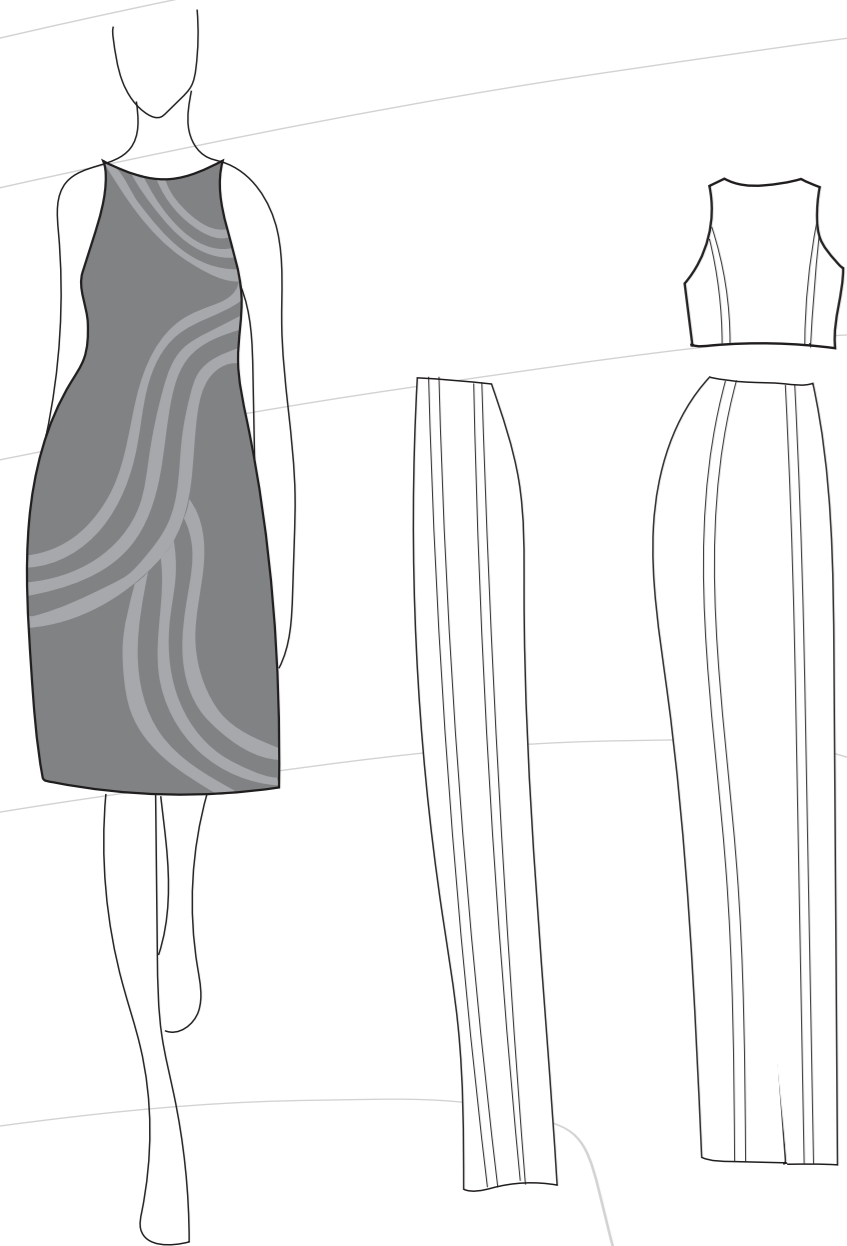
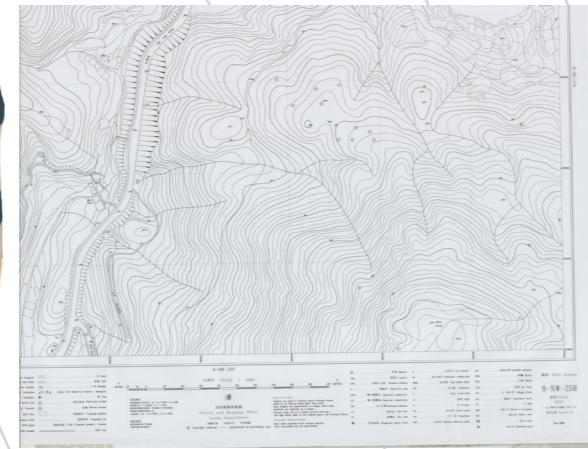


These panels are sewn together to create different shades of fabric when draped



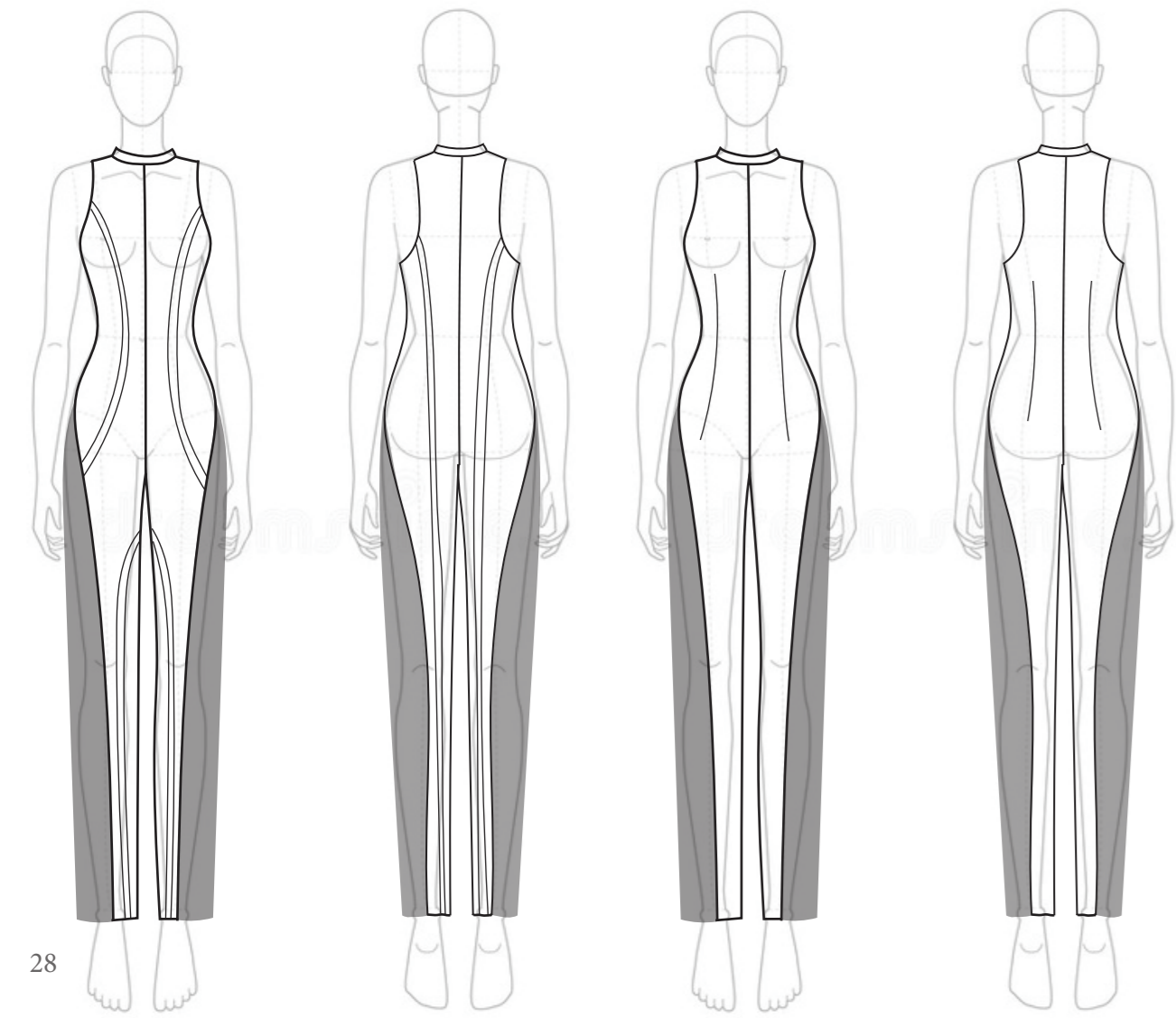
Design Development

Exploring silhouette using ribbons to show the connections to place I have and the maps I researched.



Exploring different length hems with the ribbons to show the flow of chines writing.

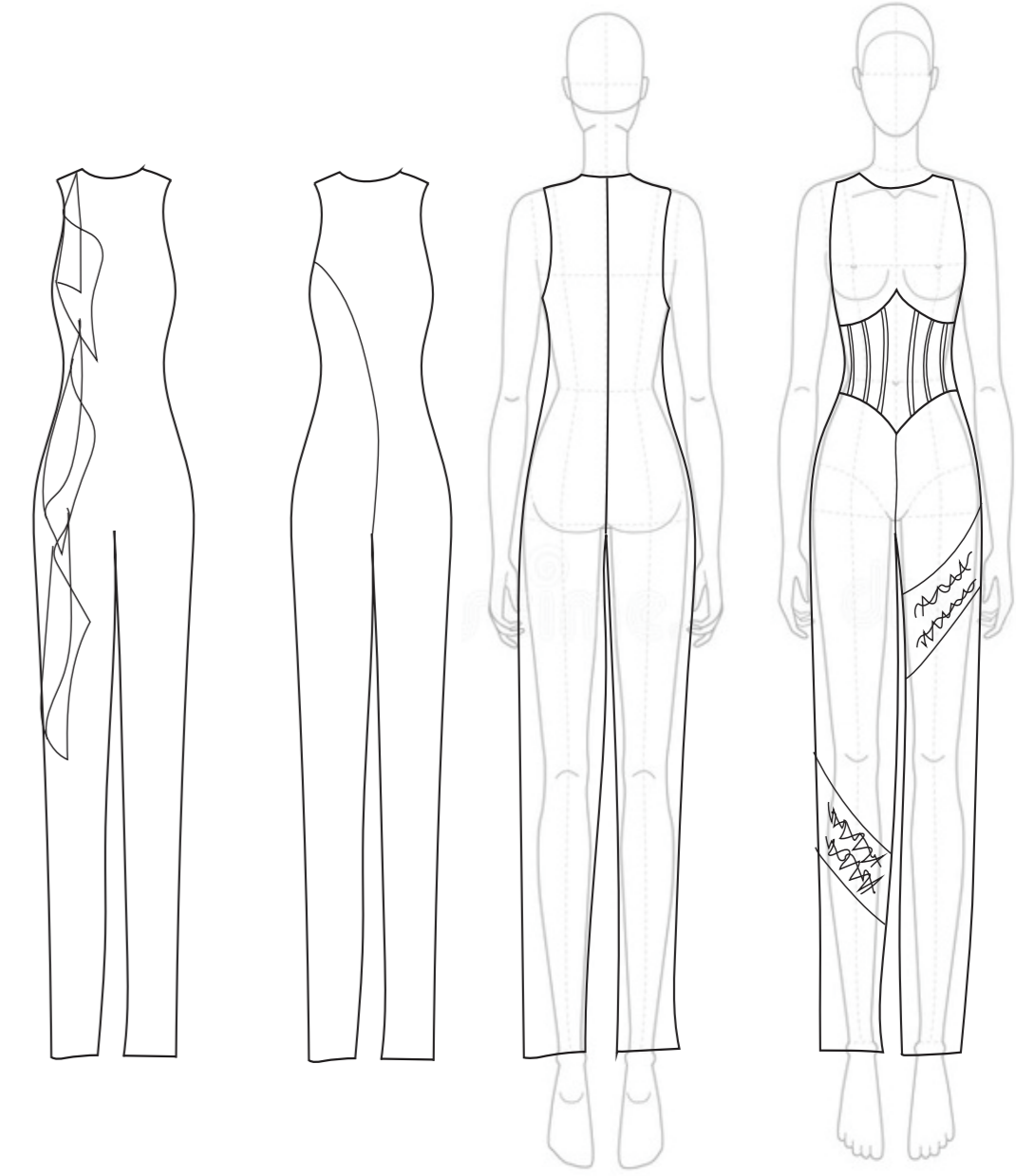
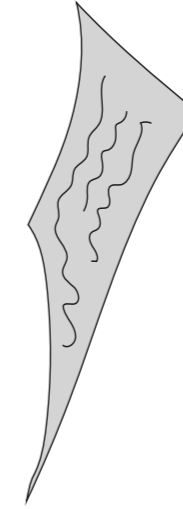
Design Development



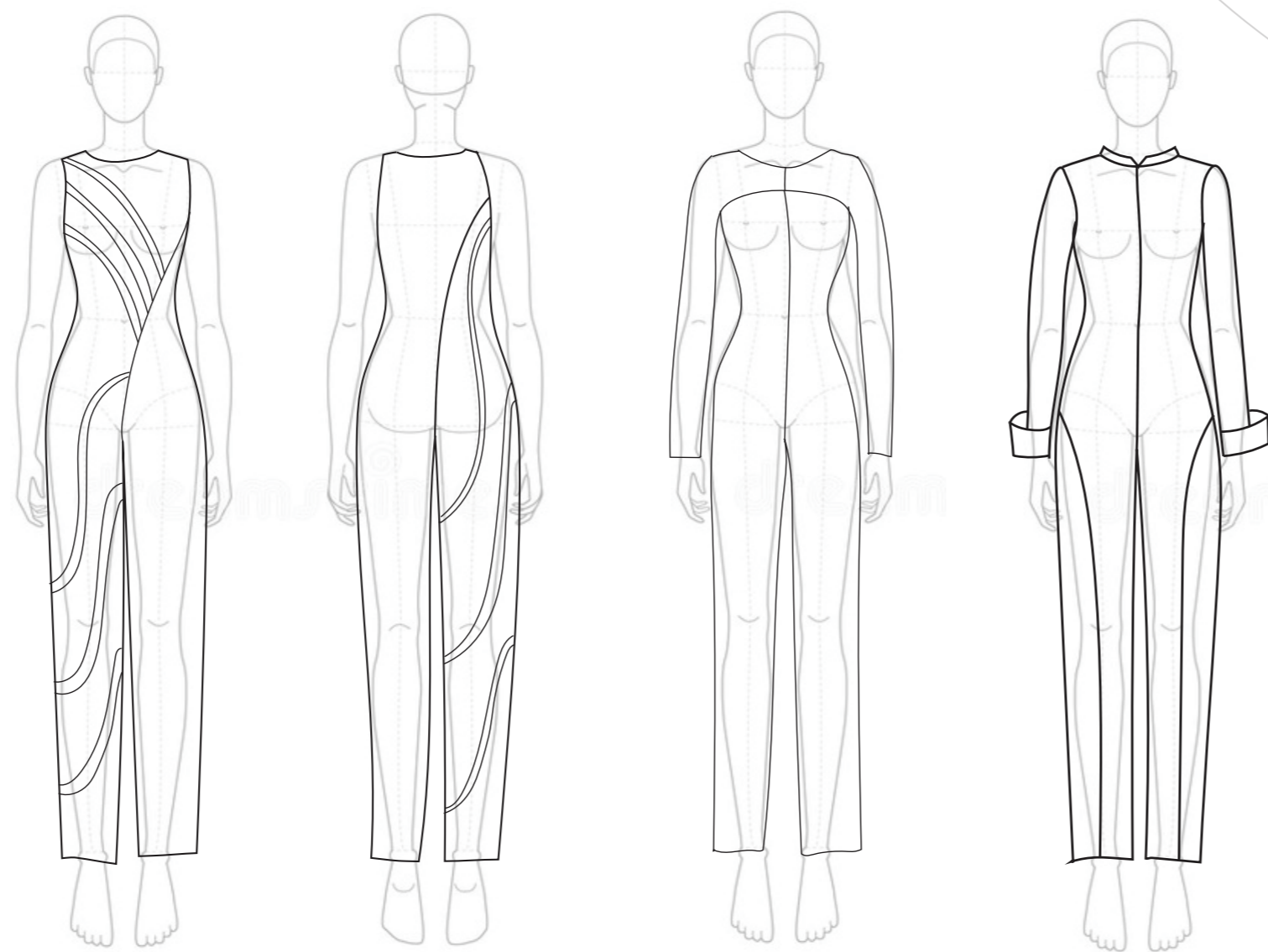
Exploring with different layers of fabric as different weights of fabric. Mixing sheres and wools or silks so show the contrast of the Hong Kong Landscape



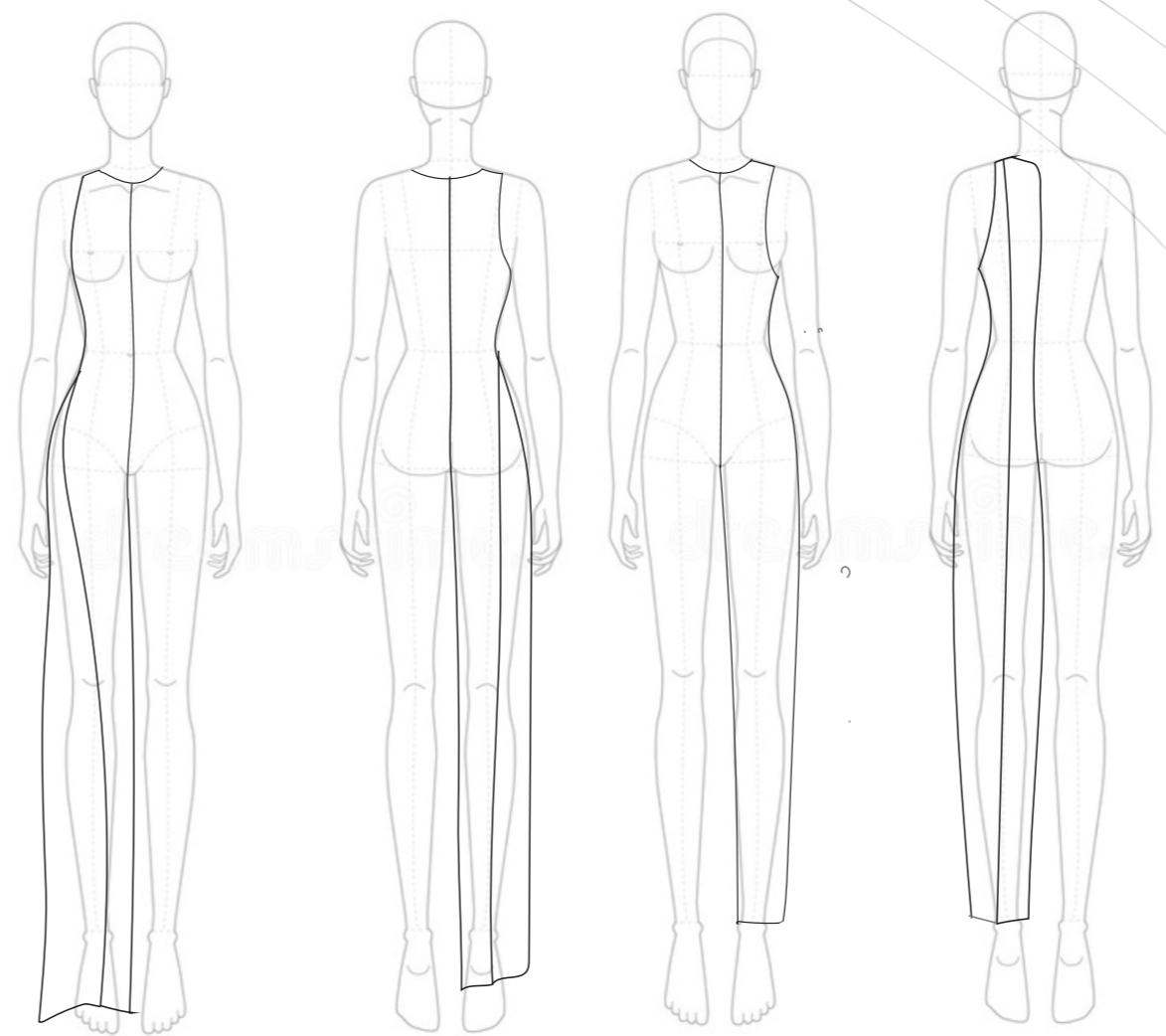
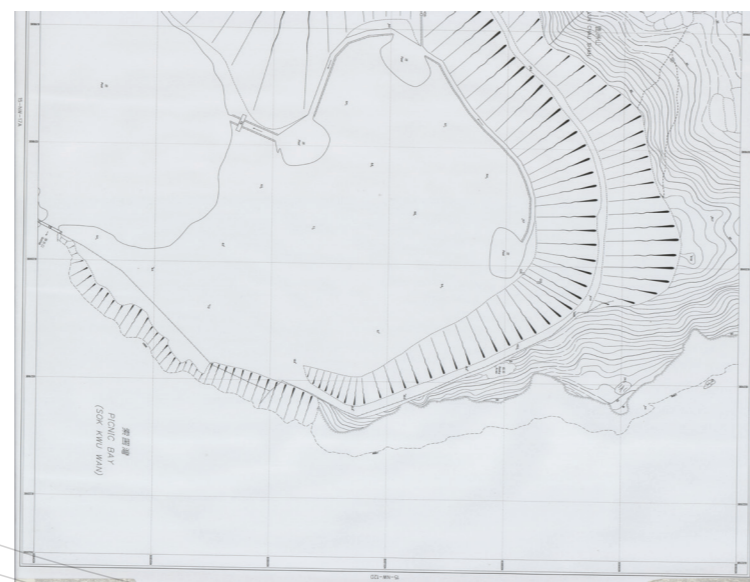
Adding layers on top in different fabrics and colours to show to contrast of the land and the city.



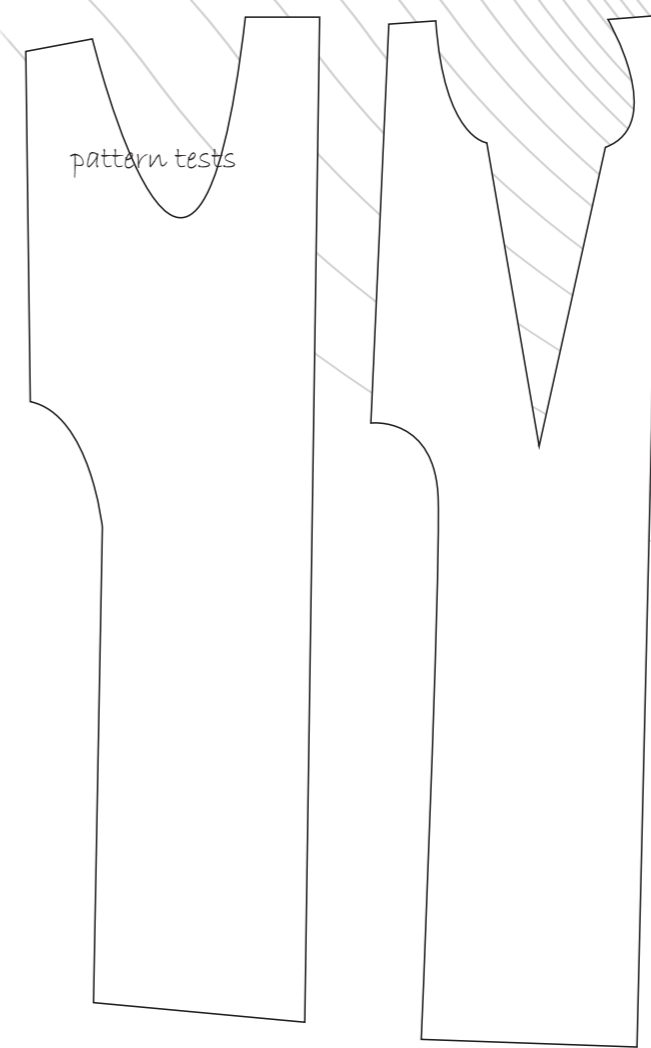
Design Development

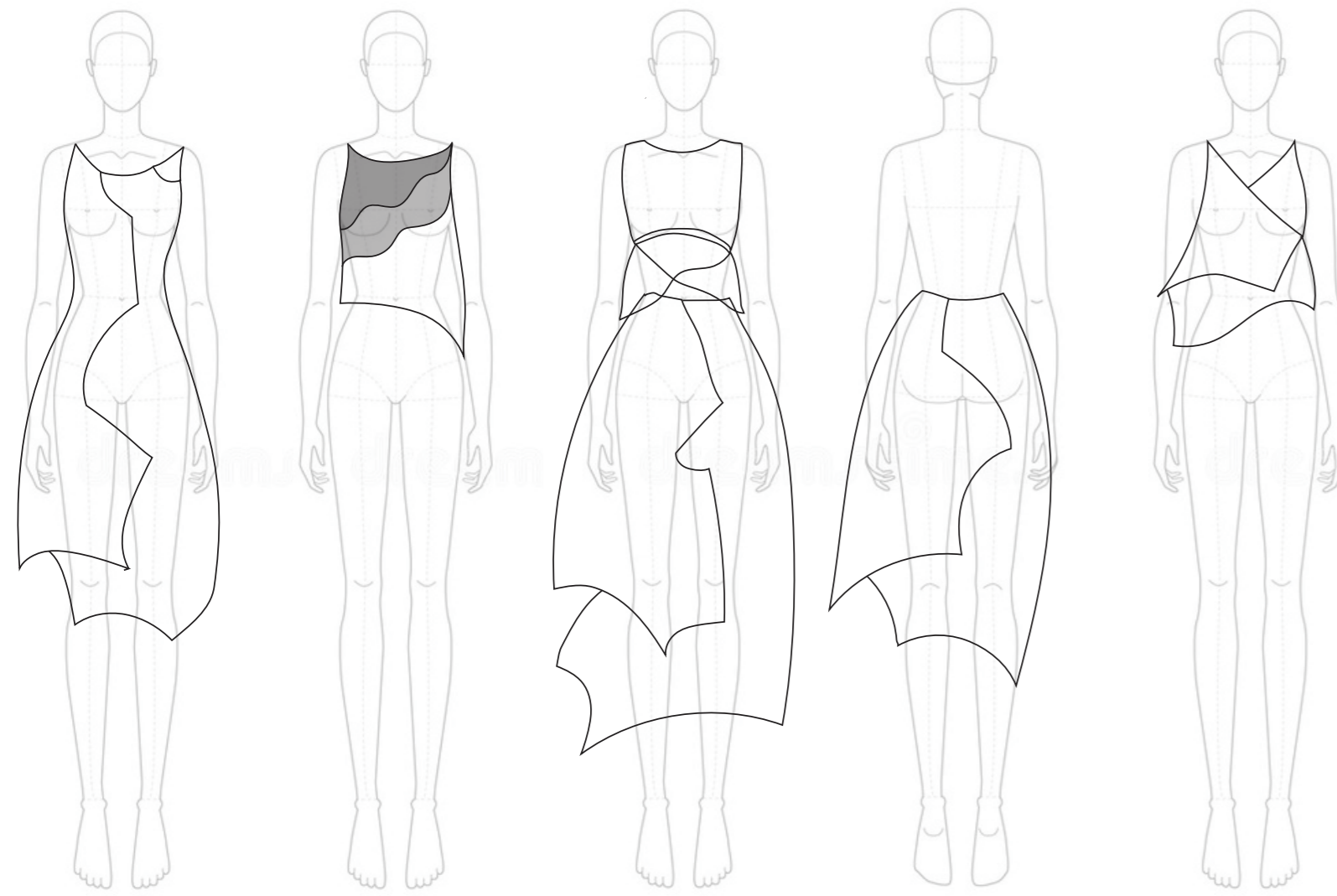


Exploring cut out and 3d shaping to create curves and silhouette lines.



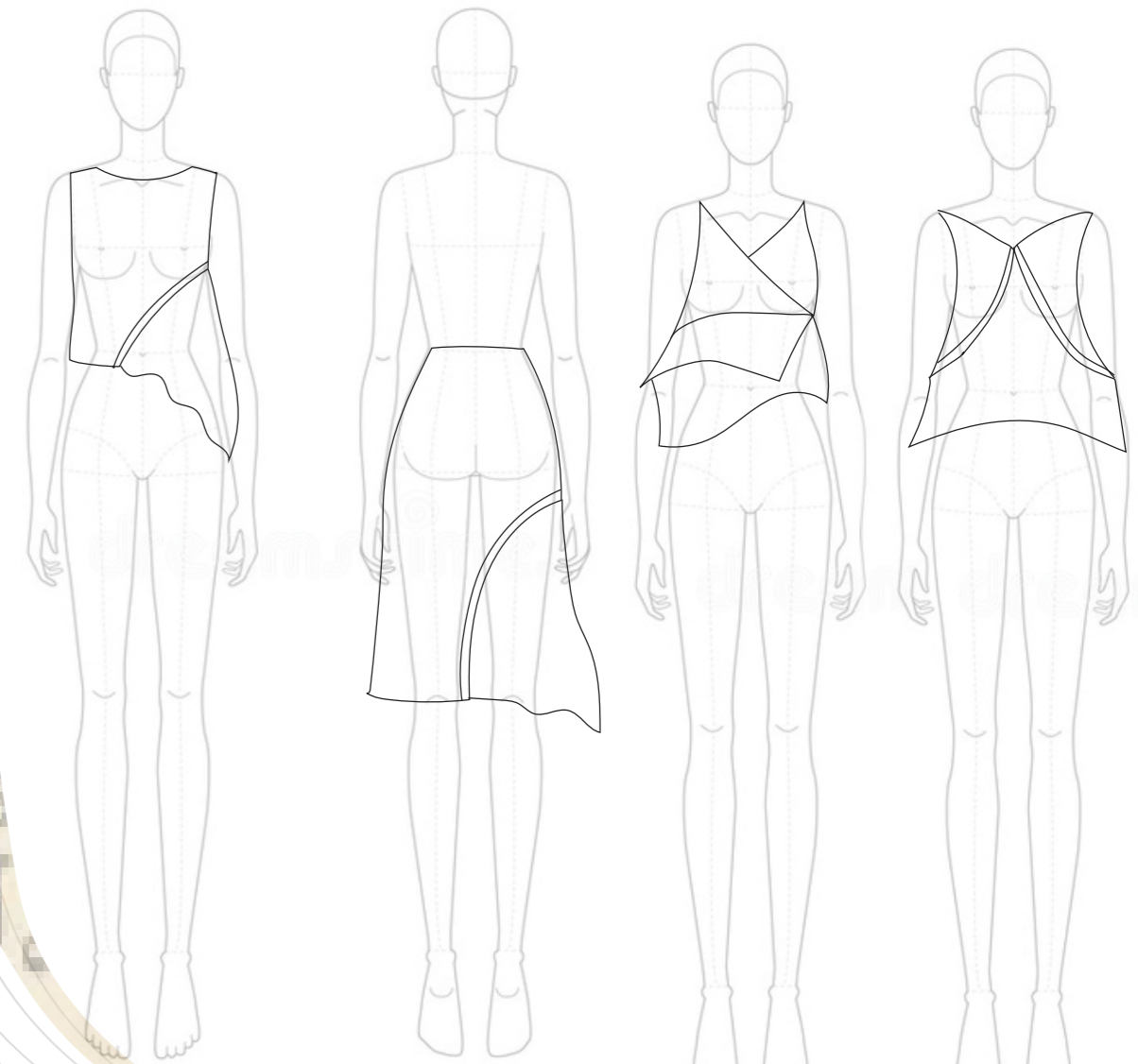
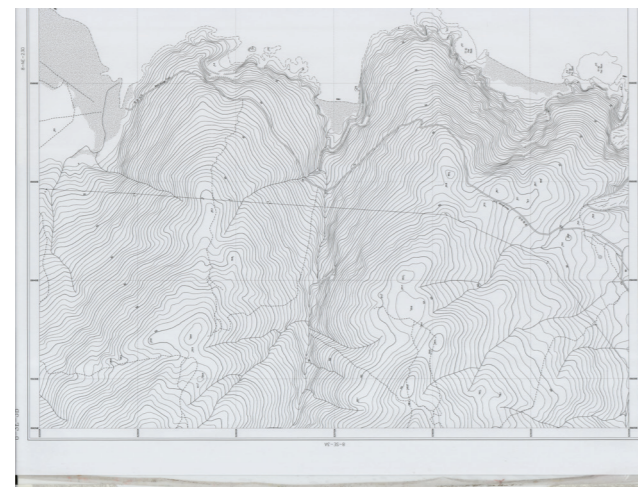
Exploring patterns and reducing seams to create the garments.
Exploring displacing seams to create different shapes





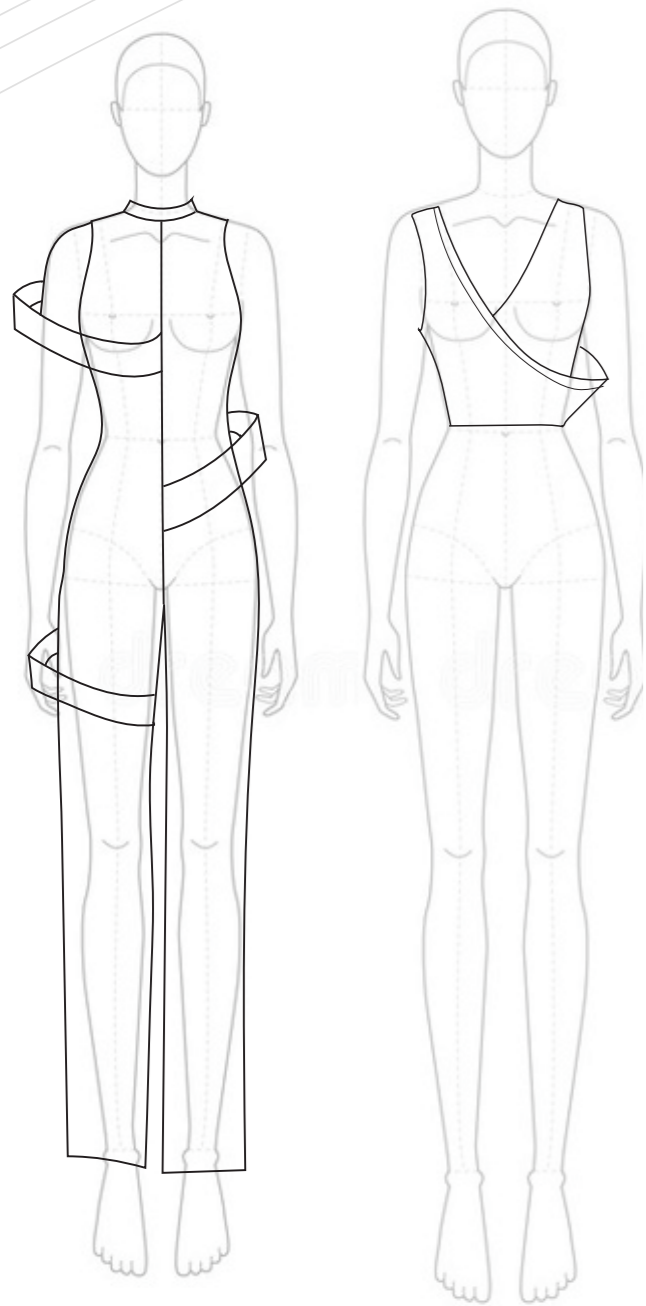
Design Development

Exploring curved seams and pattern and silhouettes line to mimic the line on the maps and chines art.

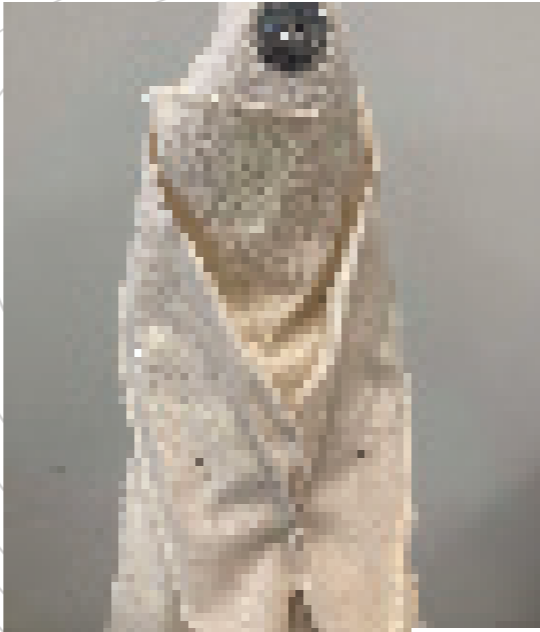


Over laping layer and connecting fabrics with ribbons and changong the fabric to shere fabrics.

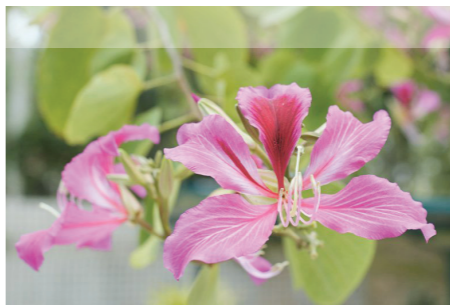
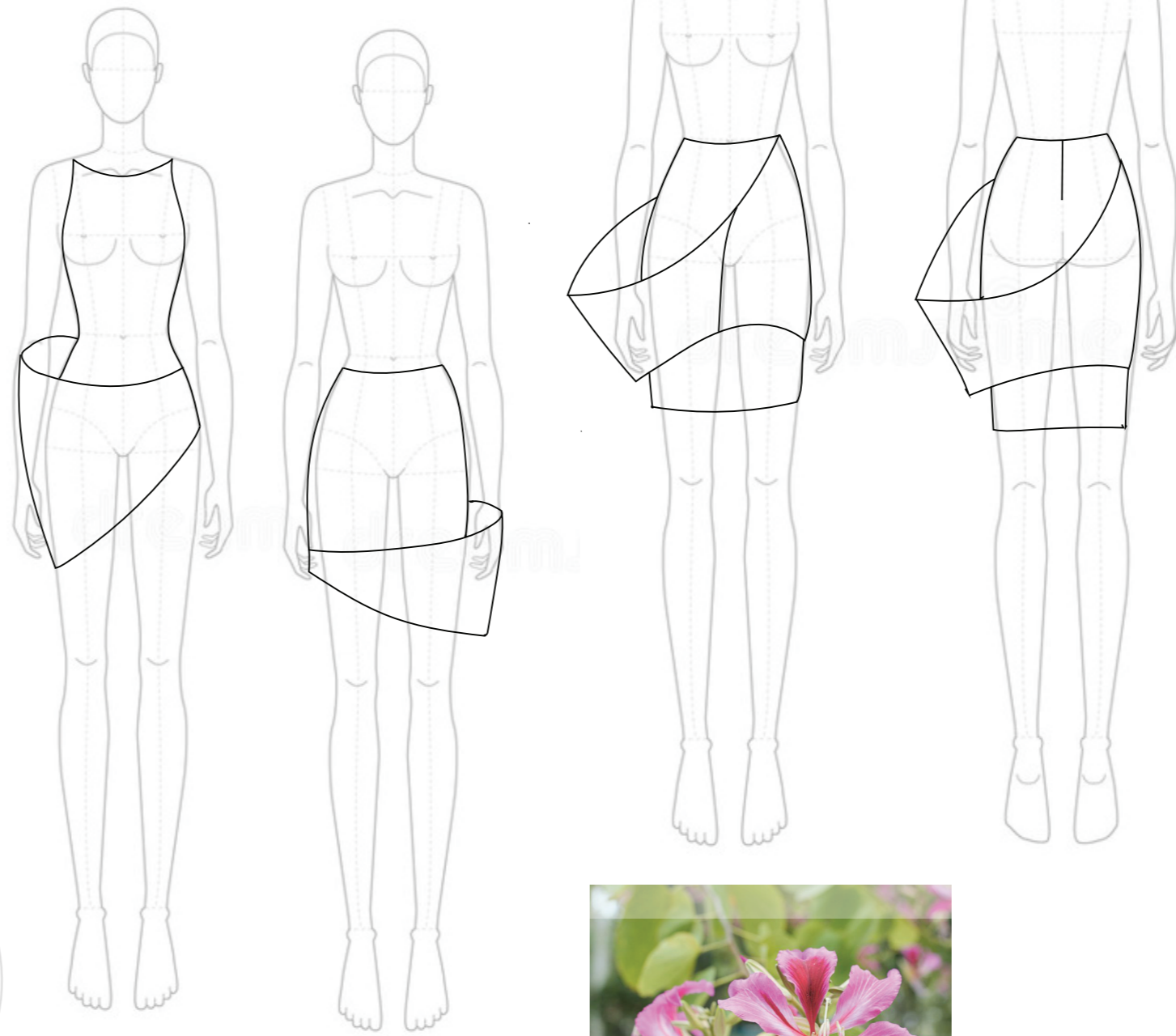
Design Development



Exploring structure around the body to resemble this flow of shapes and connections to places through this extra layers connections.

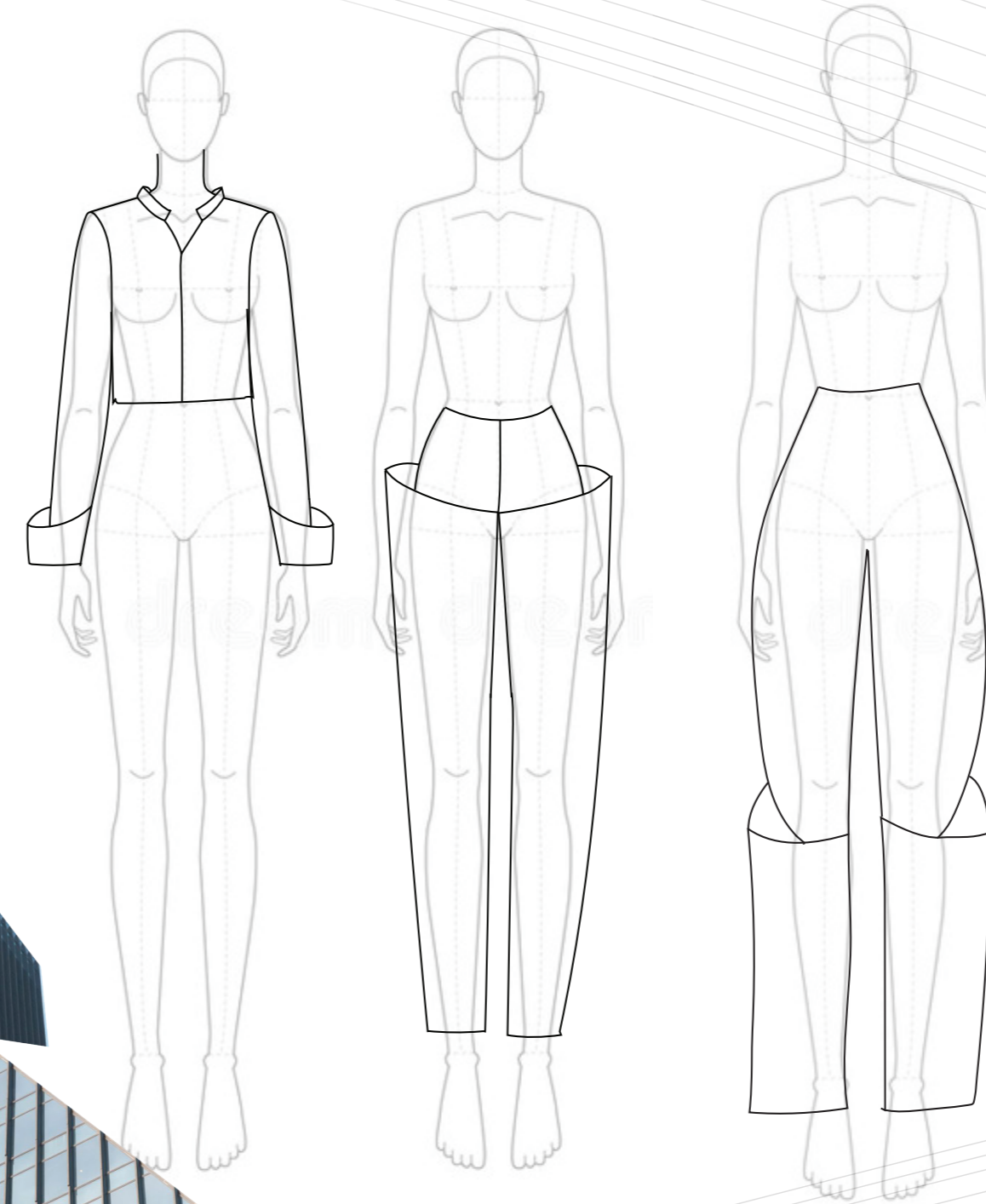
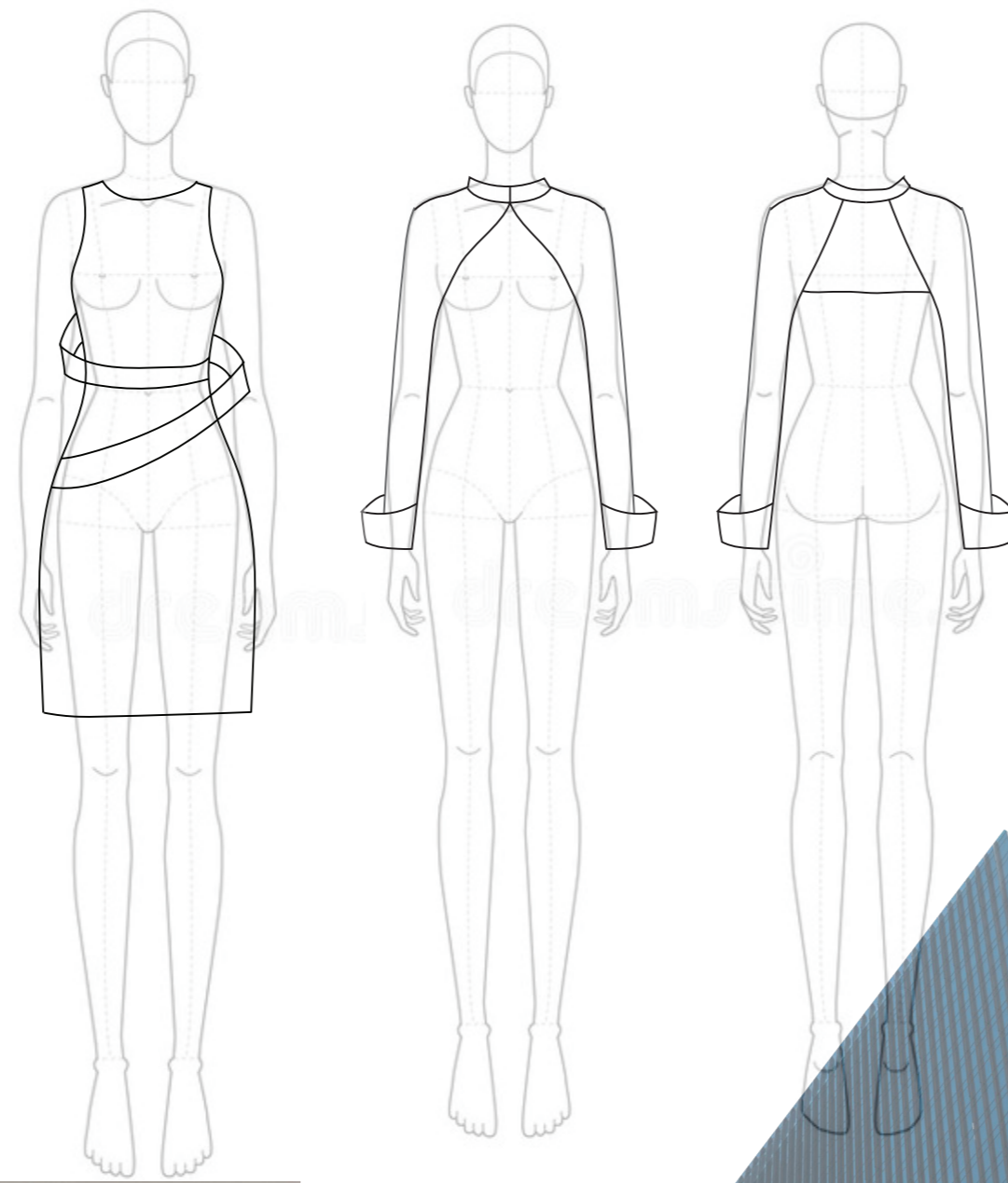


Exploring this connections through the shapes of the chinees folwer and art.



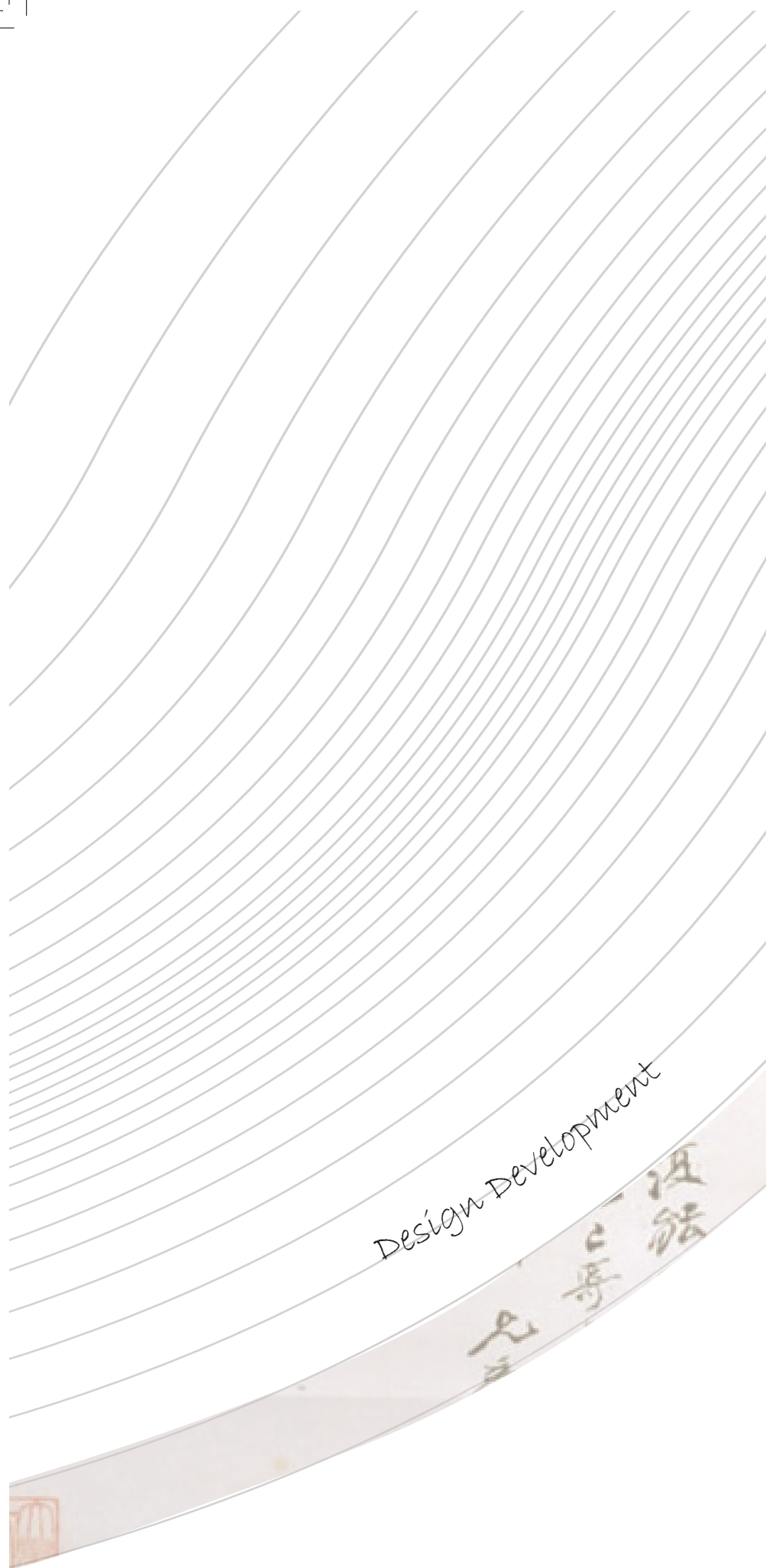
Creating structure around garments to show the follow of nature through Hong Kong.

Design Development



Exploring layers and creating multiple layers and cut outs to create depth.





Design Development



Exploring multiple layers by sandwiching sheer layers together and the inner layer having gathers.

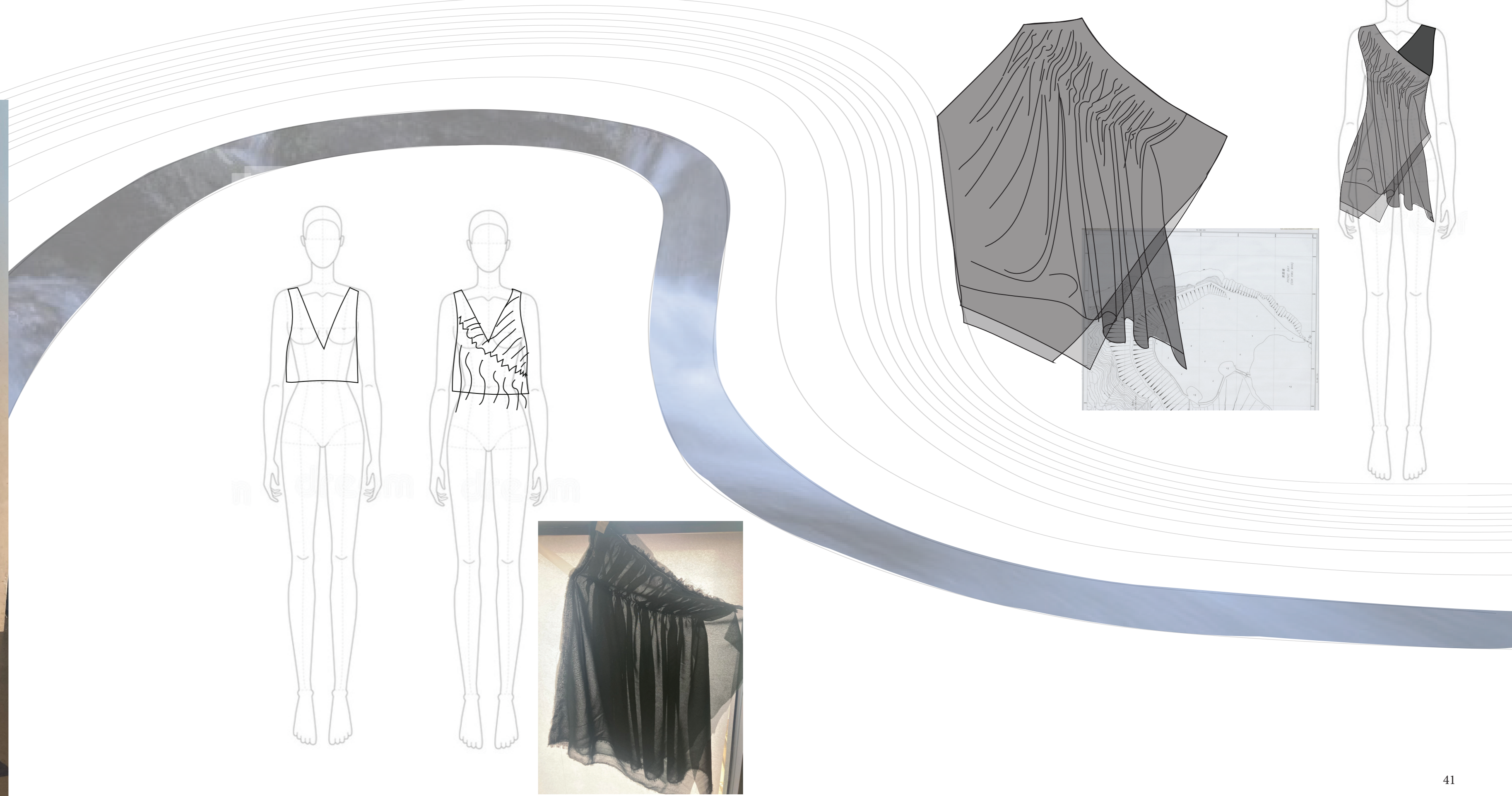


I also experimented with different colours to see what showed the layers up best. I also explored draping in windows and lighting to see how it behaved.





Here i explored the layers and incorporating it into the shape of the body.



Exploring mutilpe layers by sandwiching Shere layers together and the idles layer having gathers.



Colour And Fabric Boards

When looking for fabrics I focused on looking for light weight, silks and wools. I also came across grosgrain ribbon which was the exact medium i needed to create the silhouette lines.

Line

UP

LOOK 1

LOOK 2

LOOK 3

LOOK 4

LOOK 5

LOOK 6

LOOK 7

LOOK 8

LOOK 9

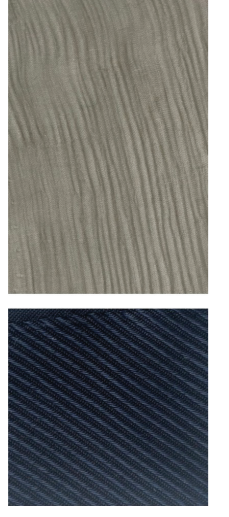
LOOK 10

LOOK 11

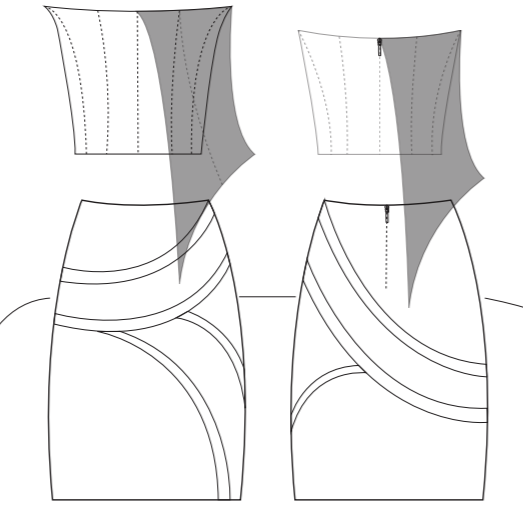
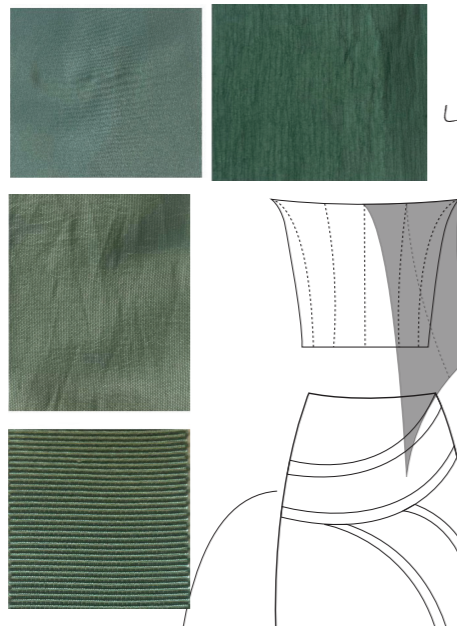
LOOK 12



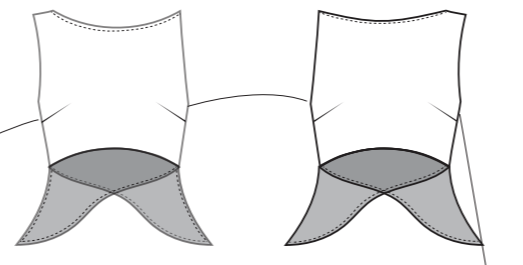
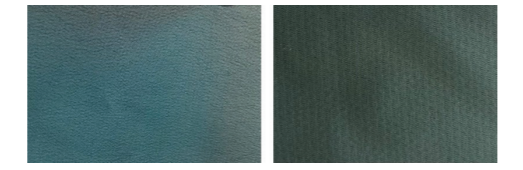
LOOK 1



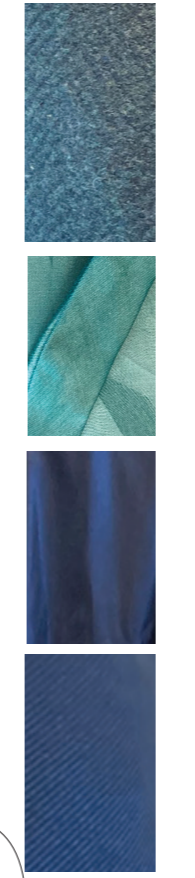
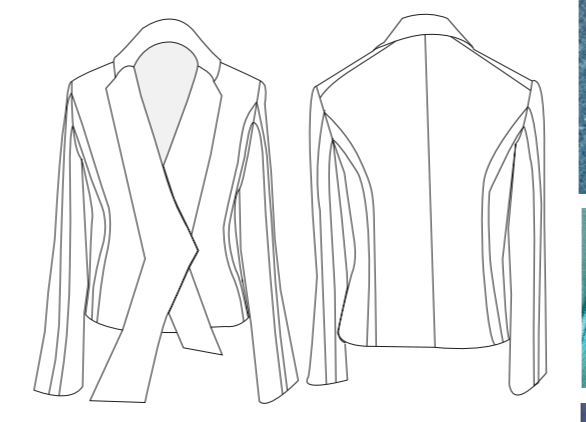
LOOK 3



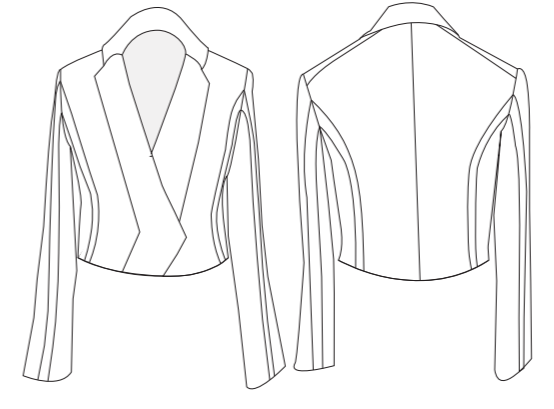
LOOK 5



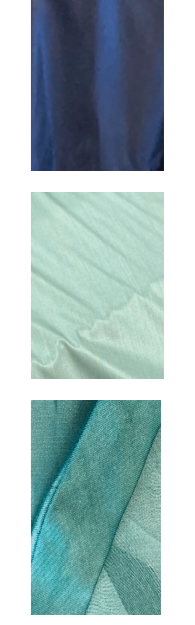
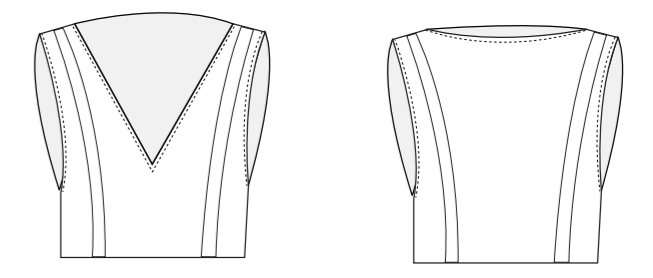
LOOK 7



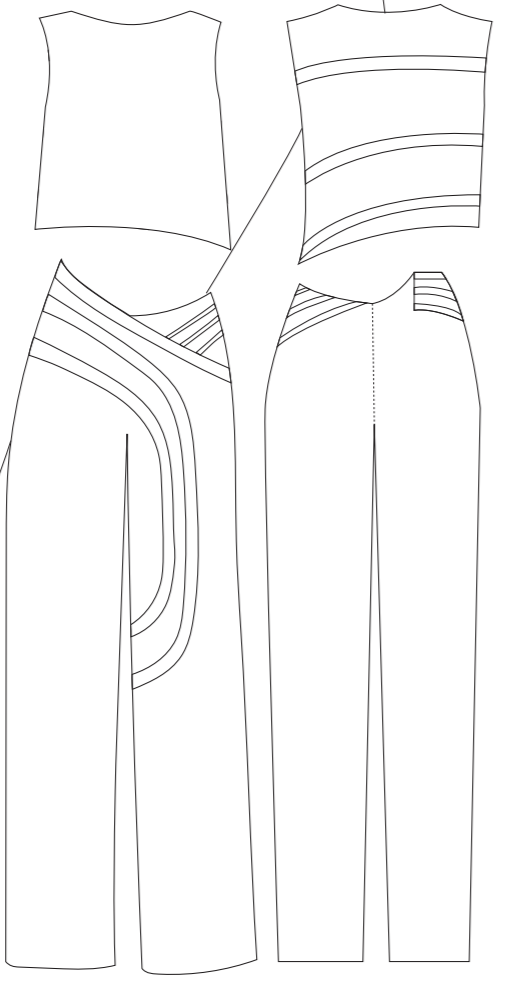
LOOK 9



LOOK 11



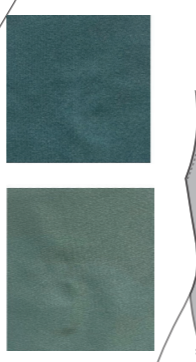
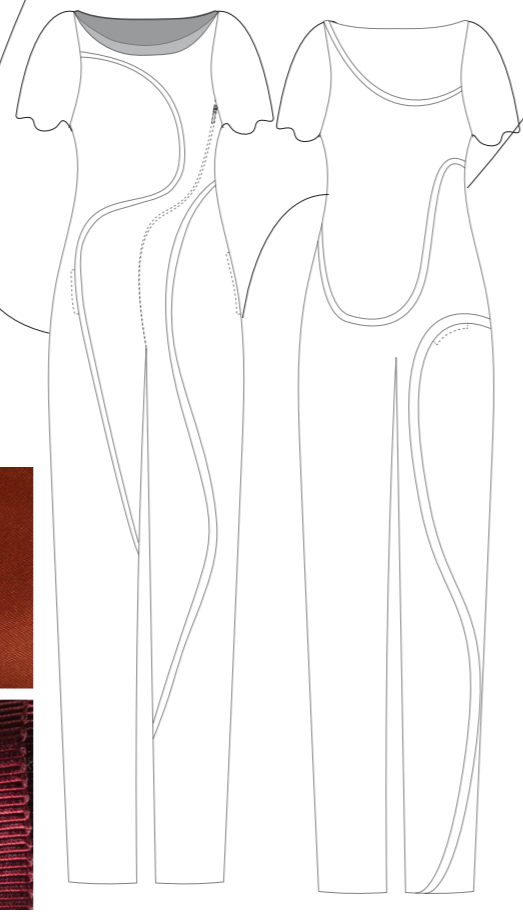
LOOK 2



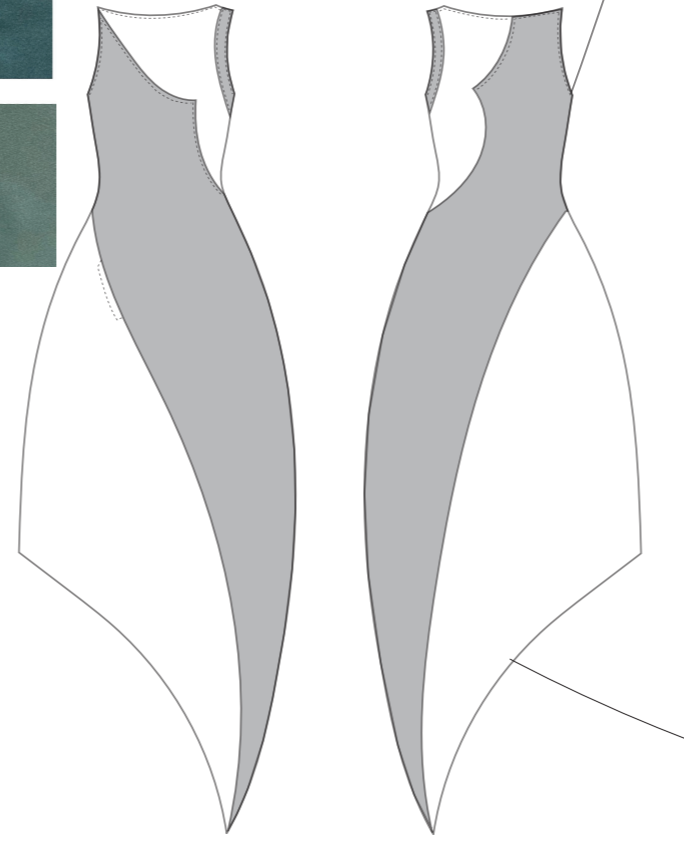
Range



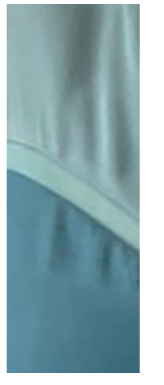
LOOK 4



LOOK 6

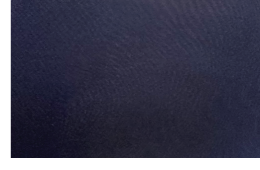


LOOK 8



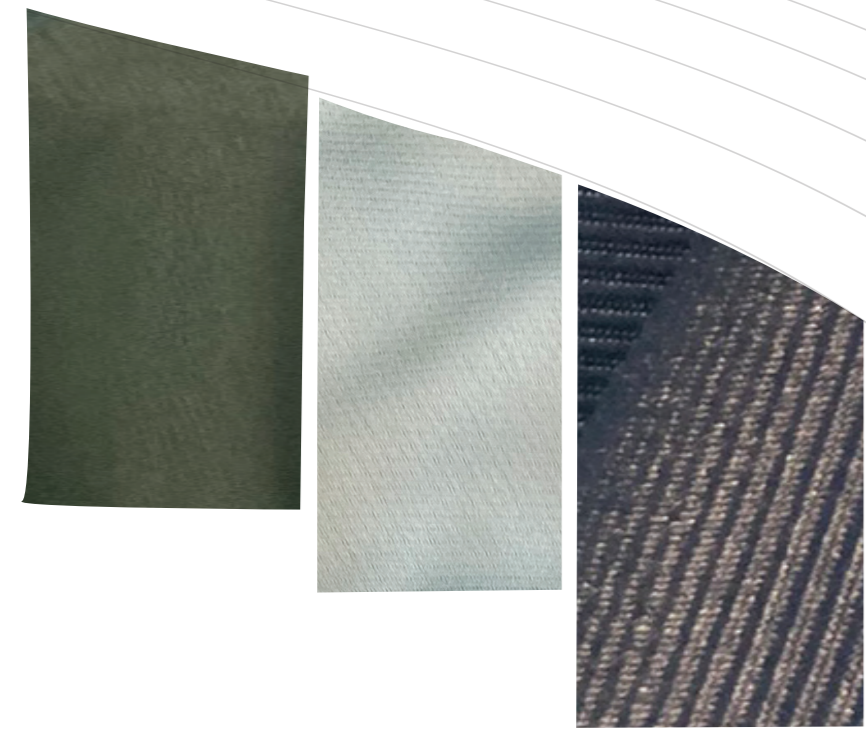
Plan

LOOK 10

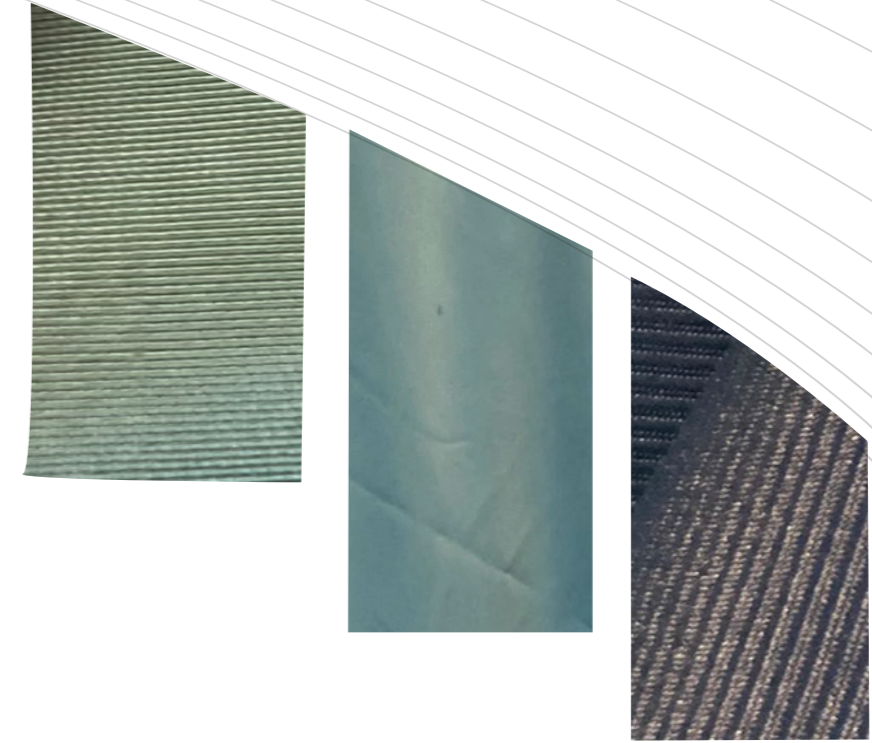
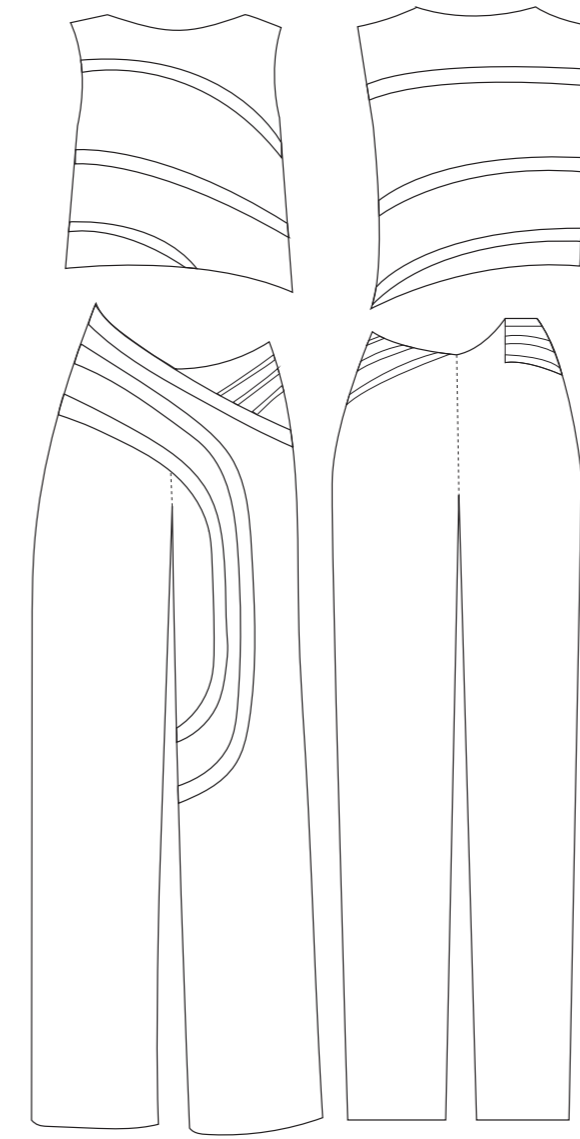
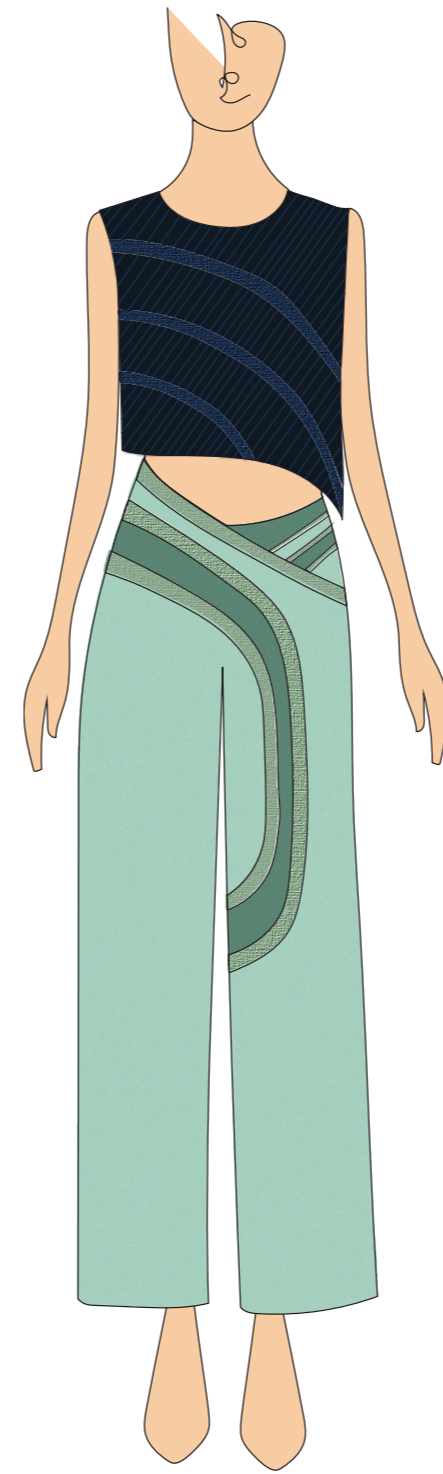
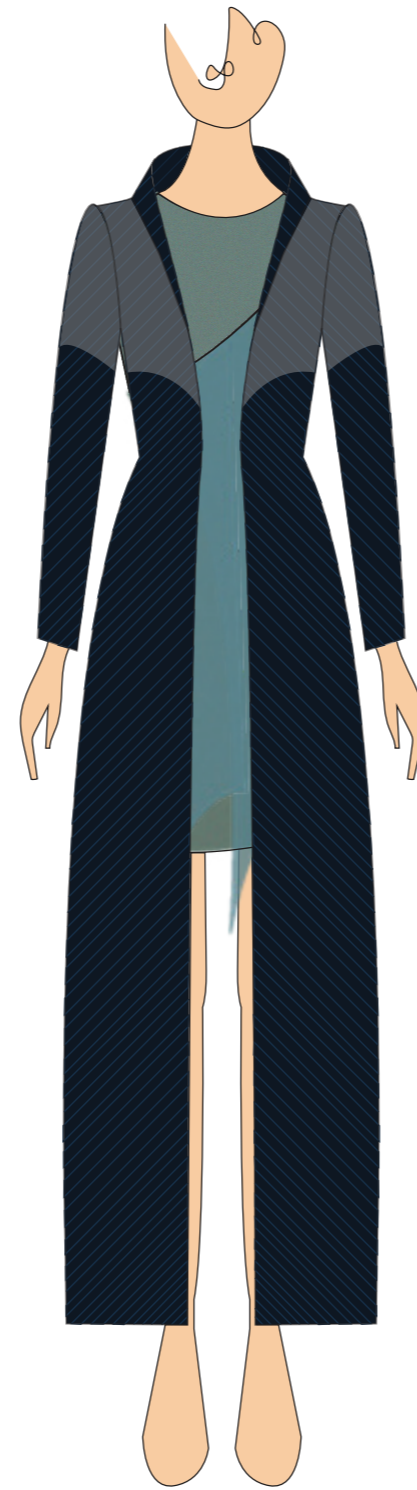
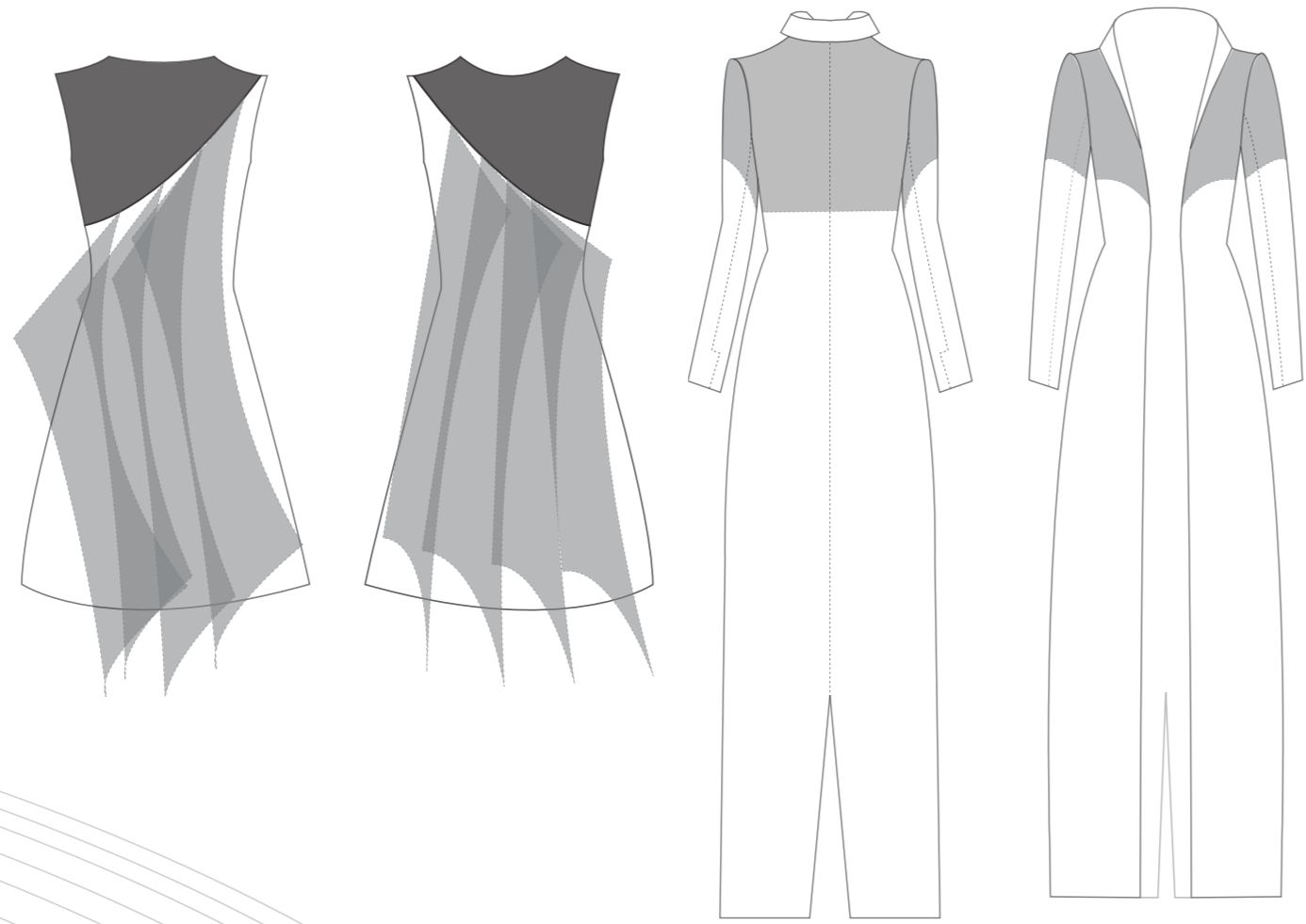


LOOK 12



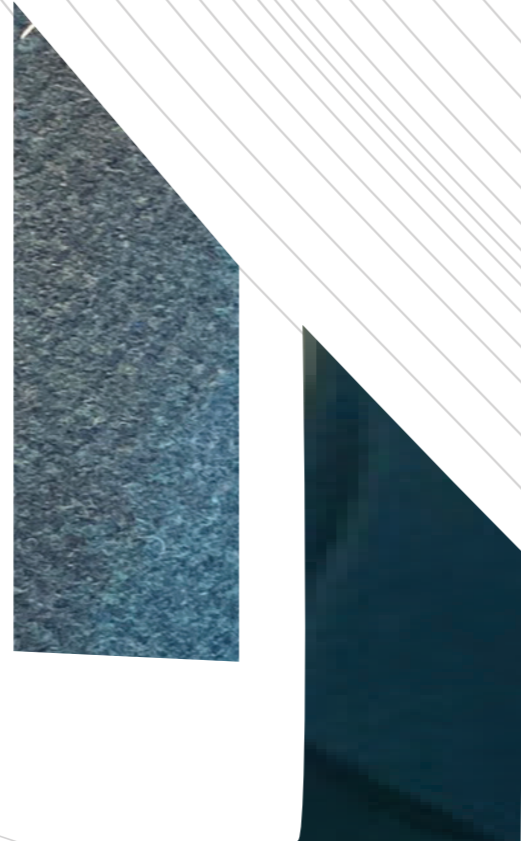
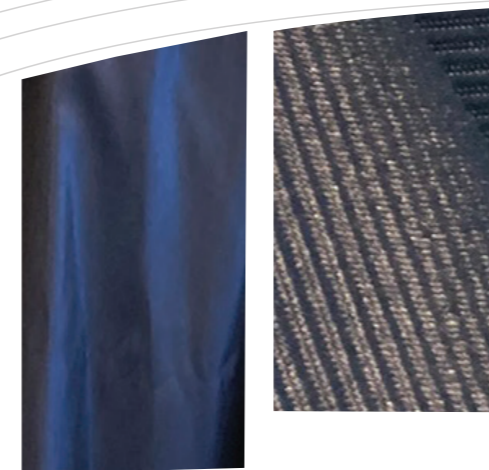


Look 1

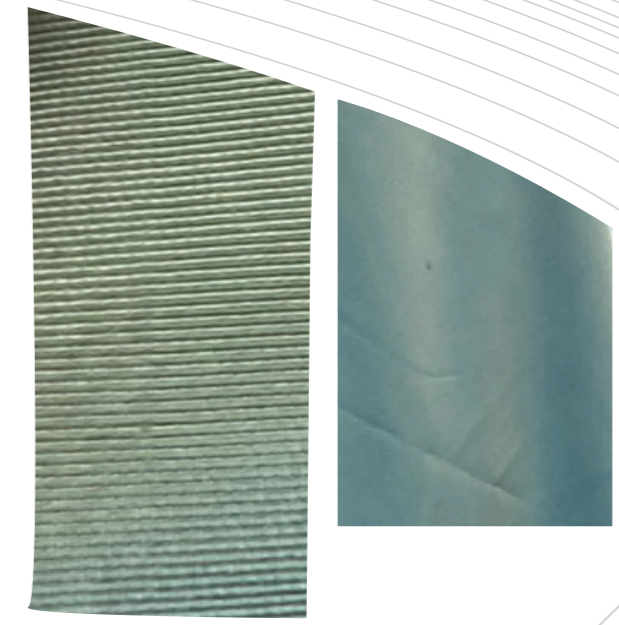
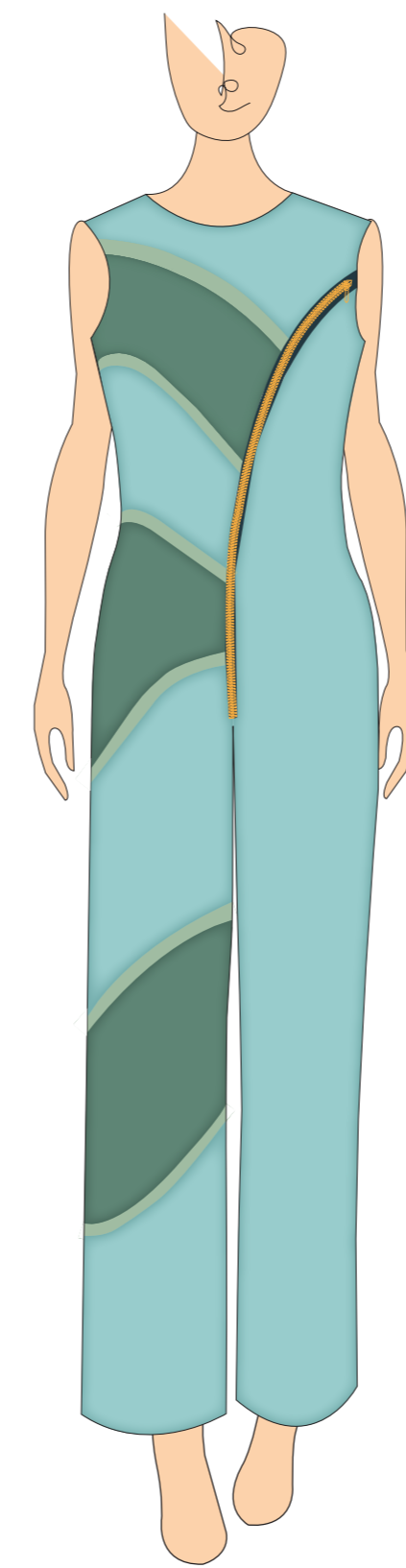


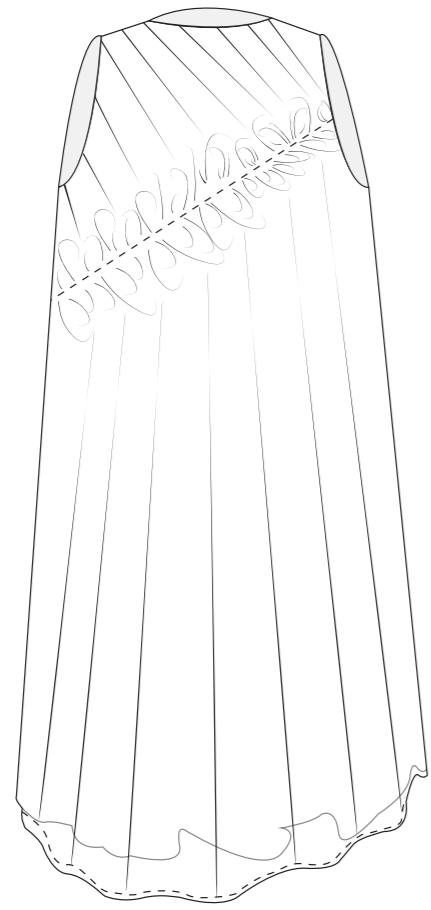
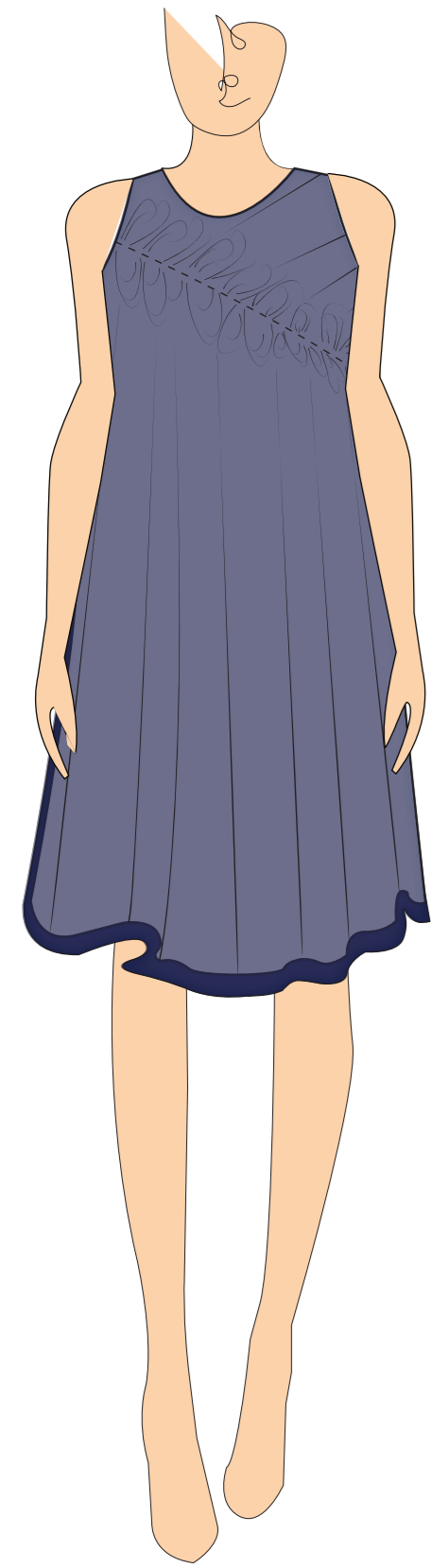
Look 1

Look 7



Look 8





Look 9

Look 10

