



exposed flesh

skin hooks

packed meat

latex vacuum bed

flayed

clasped and bound

sadistic

bratty swtich energy

impact toy

bondage sub

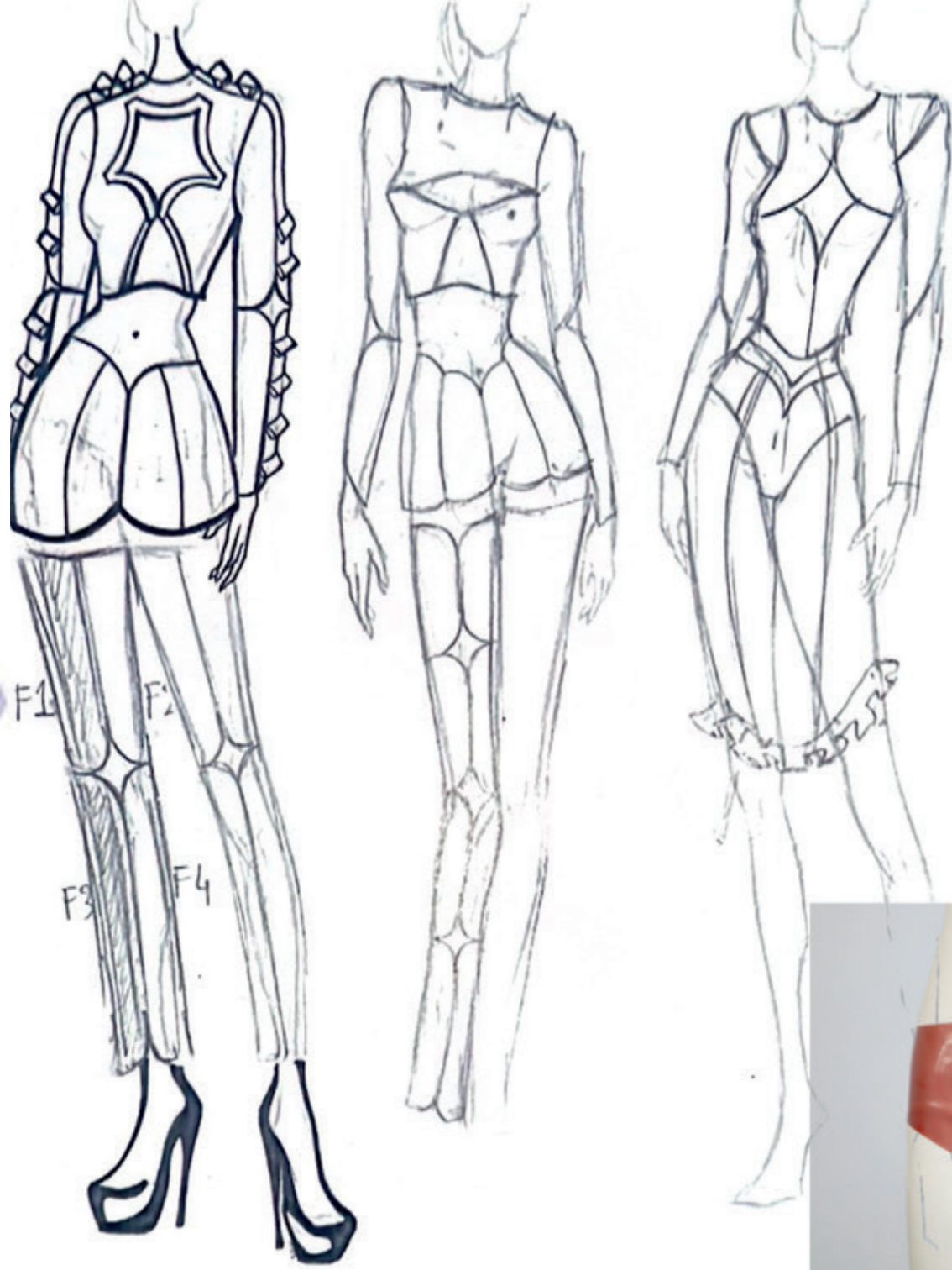
flesh bag



# LOOK 3

Bound Flesh Set

(Top, Mini skirt, Chaps, Love Bite Panties and Two Extention Straps)





Genevieve Belleveau and  
Themba Alleyne

Ecofetishism is thinking of Earth  
as a lover.

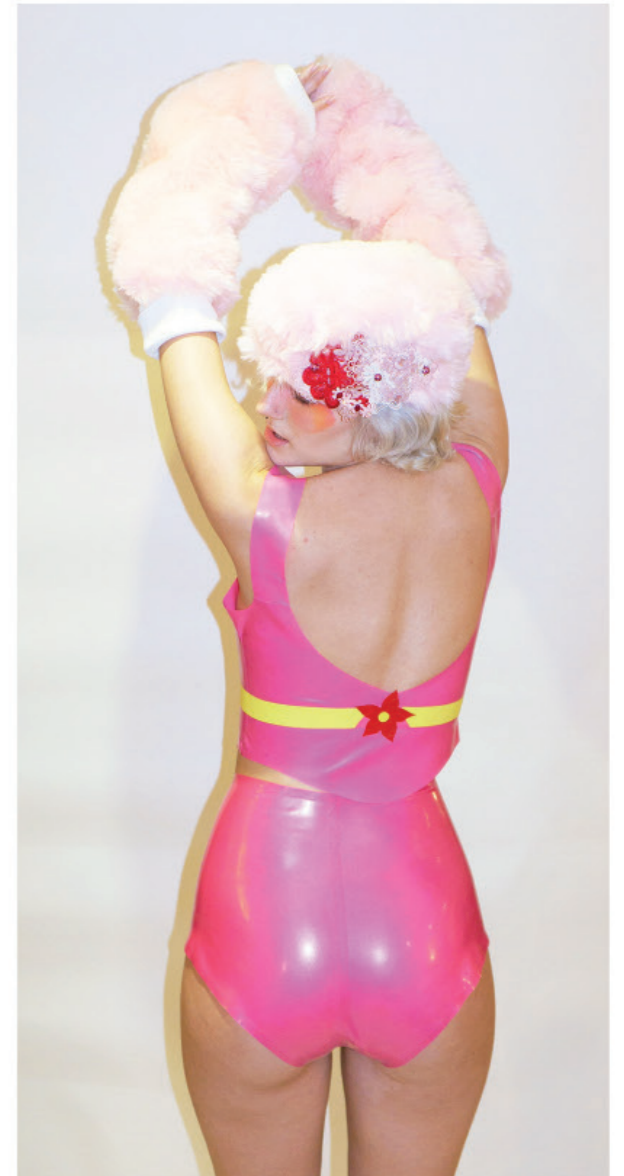
The idea of Mother Earth should  
be let go. In a misogynistic society  
seeing Earth as a “she” leads to all  
male heads of corporate structures  
polluting it as they wish.

Earth is not there for us to pollute,  
exploit and destroy and expecting  
nature to constantly repair and fix is  
not sustainable.

We all need to learn how to care for  
the nature that sustains us and our  
spending habit are a big reflection  
of how our relationship with  
environment.

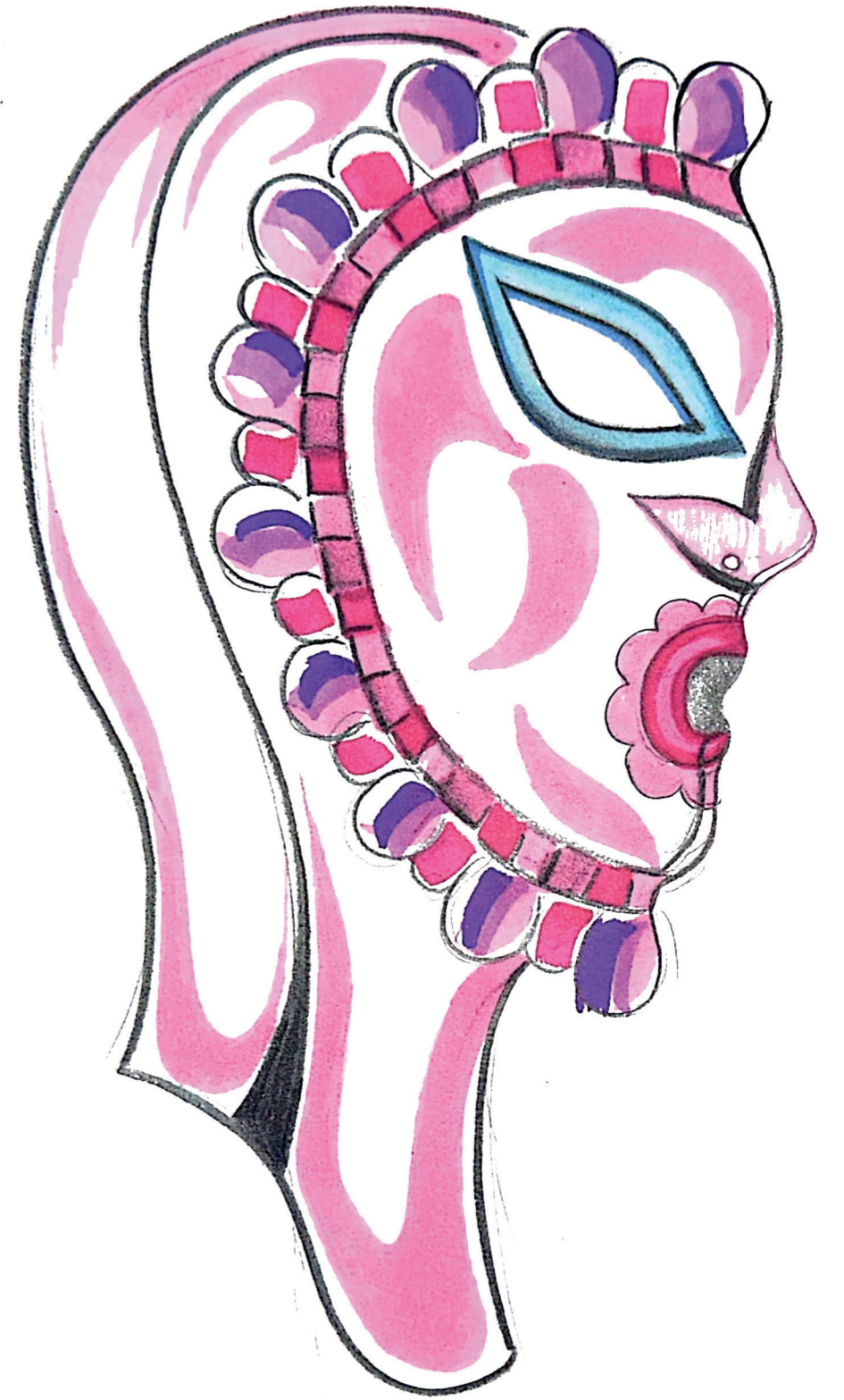
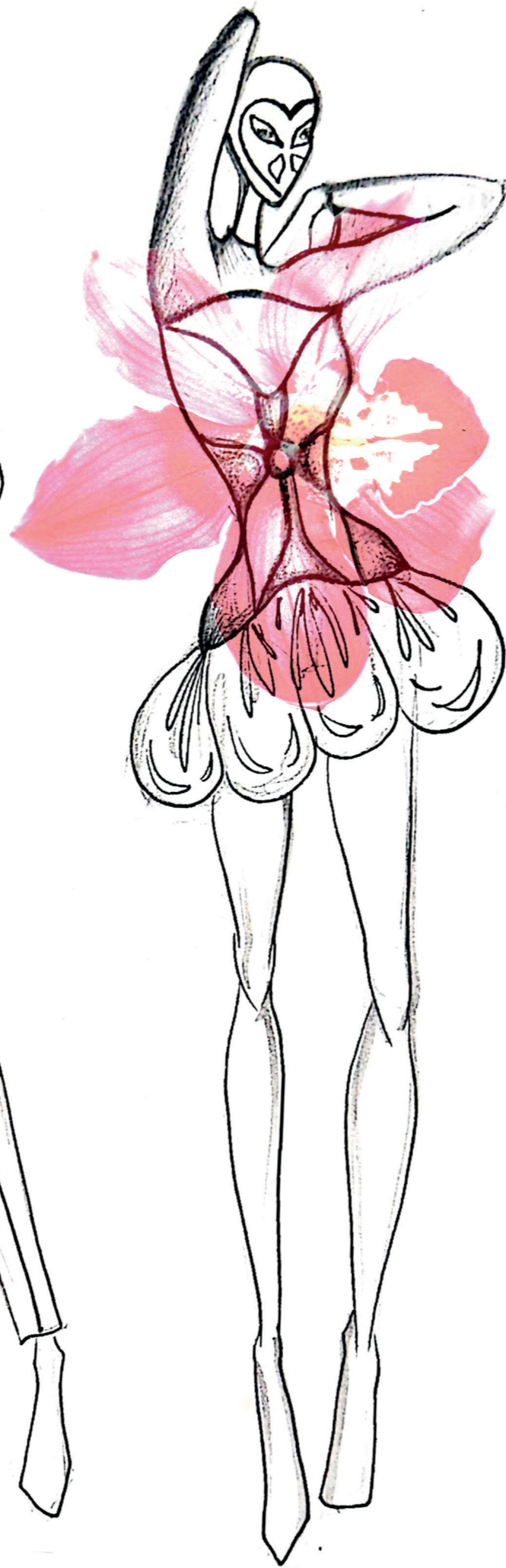
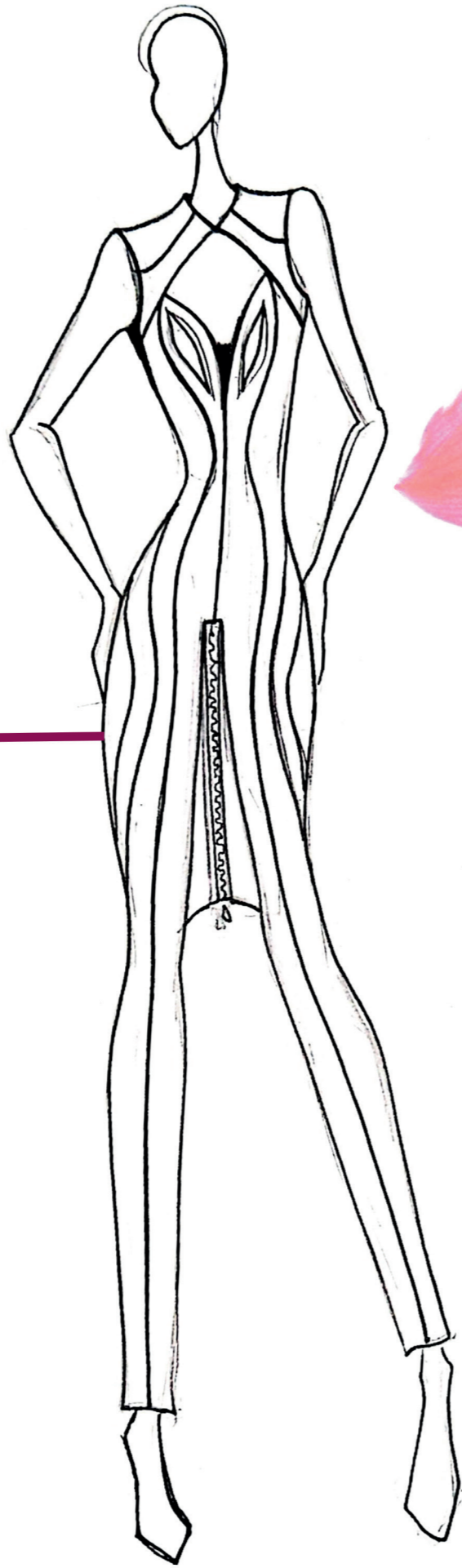
As consumers we need to aim to  
buy less and mend more.



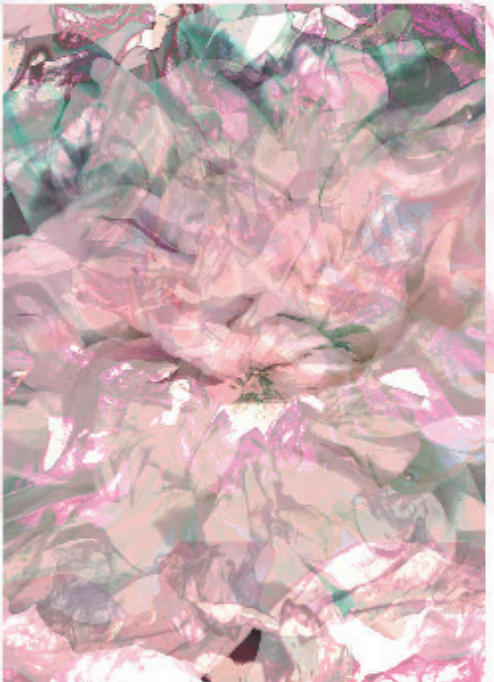
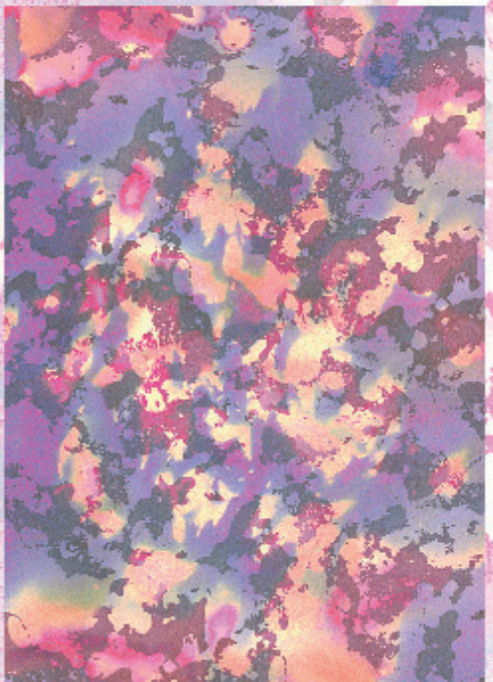
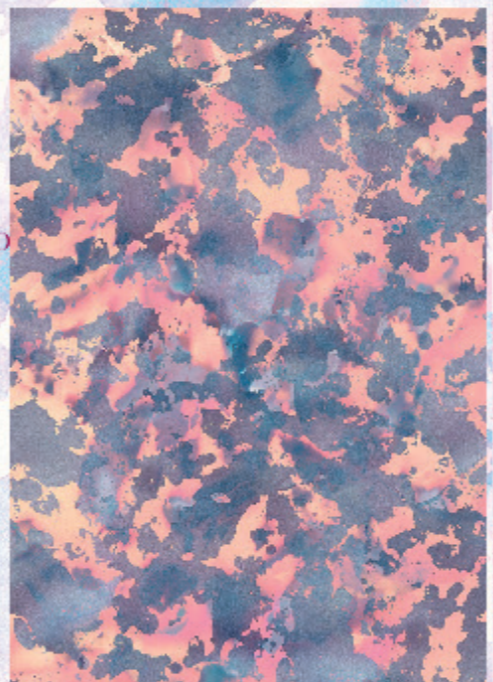
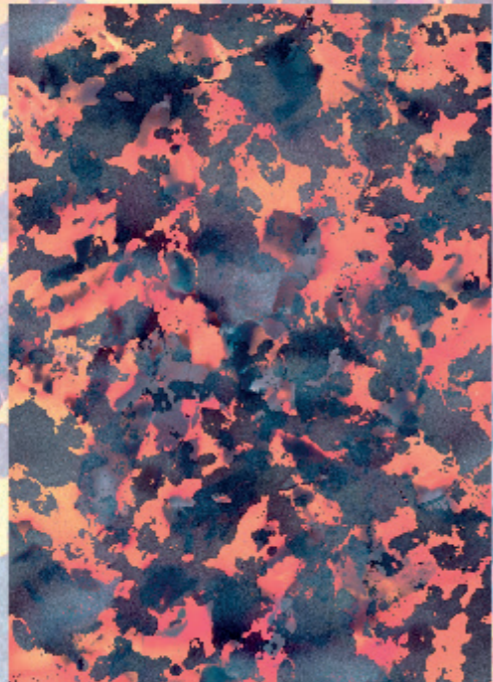


*In order to practice latex making skills I worked on this floral inspired look. I experimented with cutting petal shapes and constructing a top without darts. This look helped me understand how to adjust latex pattern sizes from standard patterns which are designed for fabric that do not have this much stretch.*

Flower-PVC  
Parasols



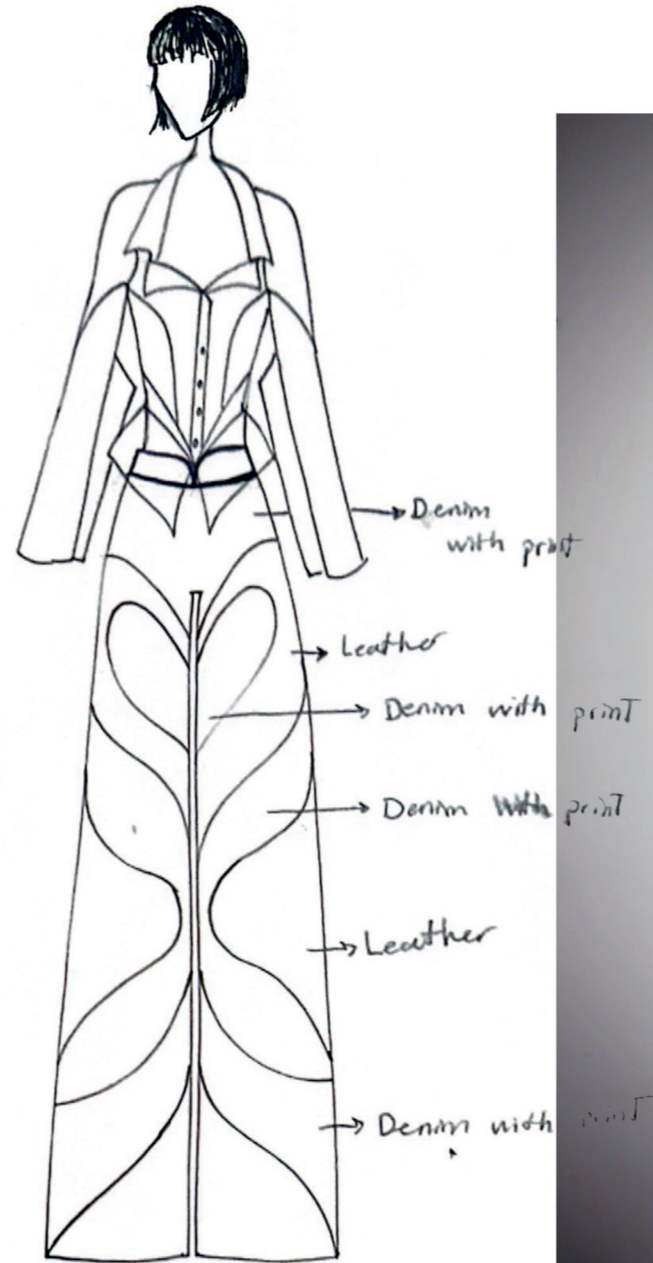
# FINAL PRINTS



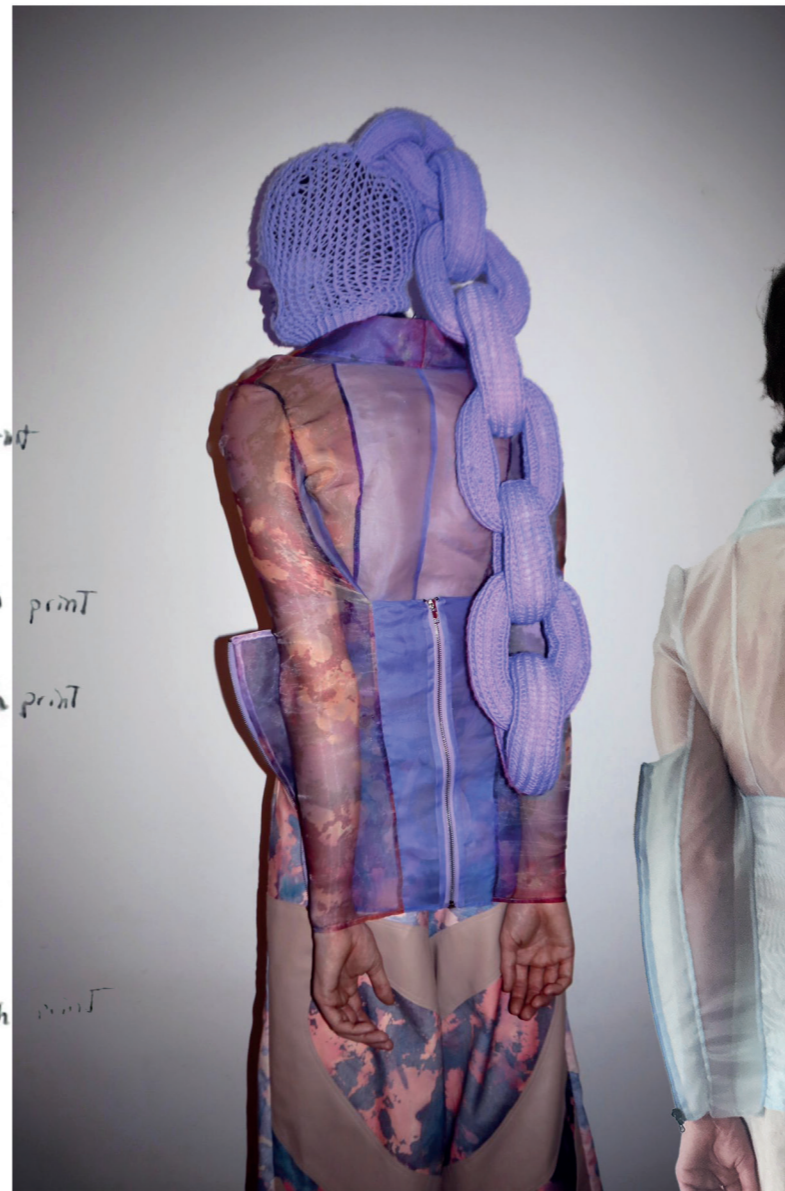
Designed in collaboration  
with Danai  
Astrinaki-Stamatopoulou

# LOOK 2

## Service Sub in Double Strappado Top Bondage Jeans



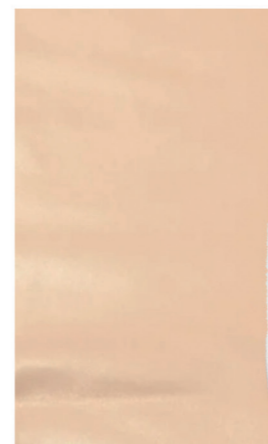
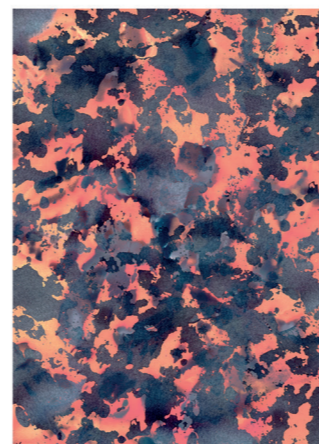
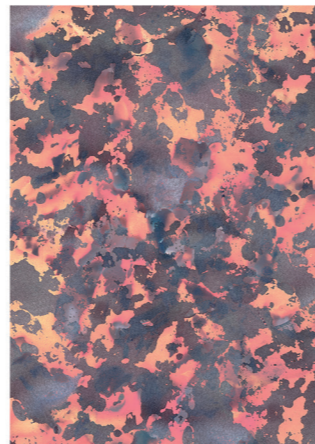
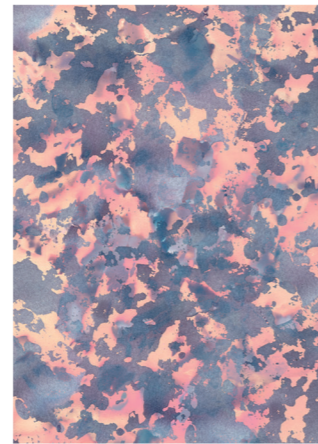
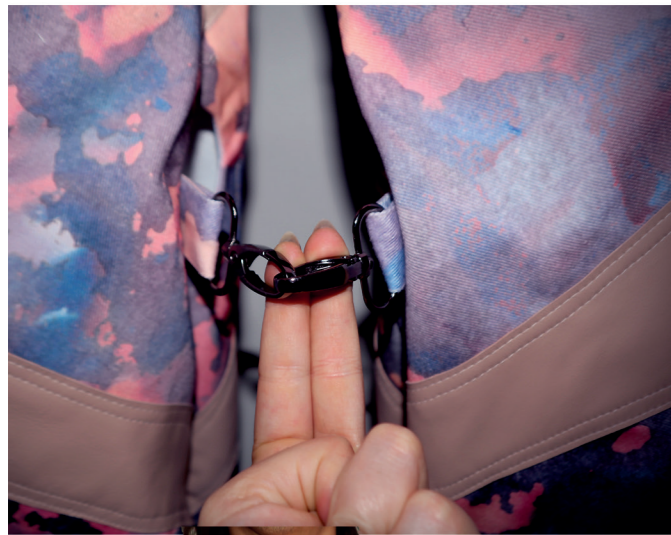
Strappado Sample 3



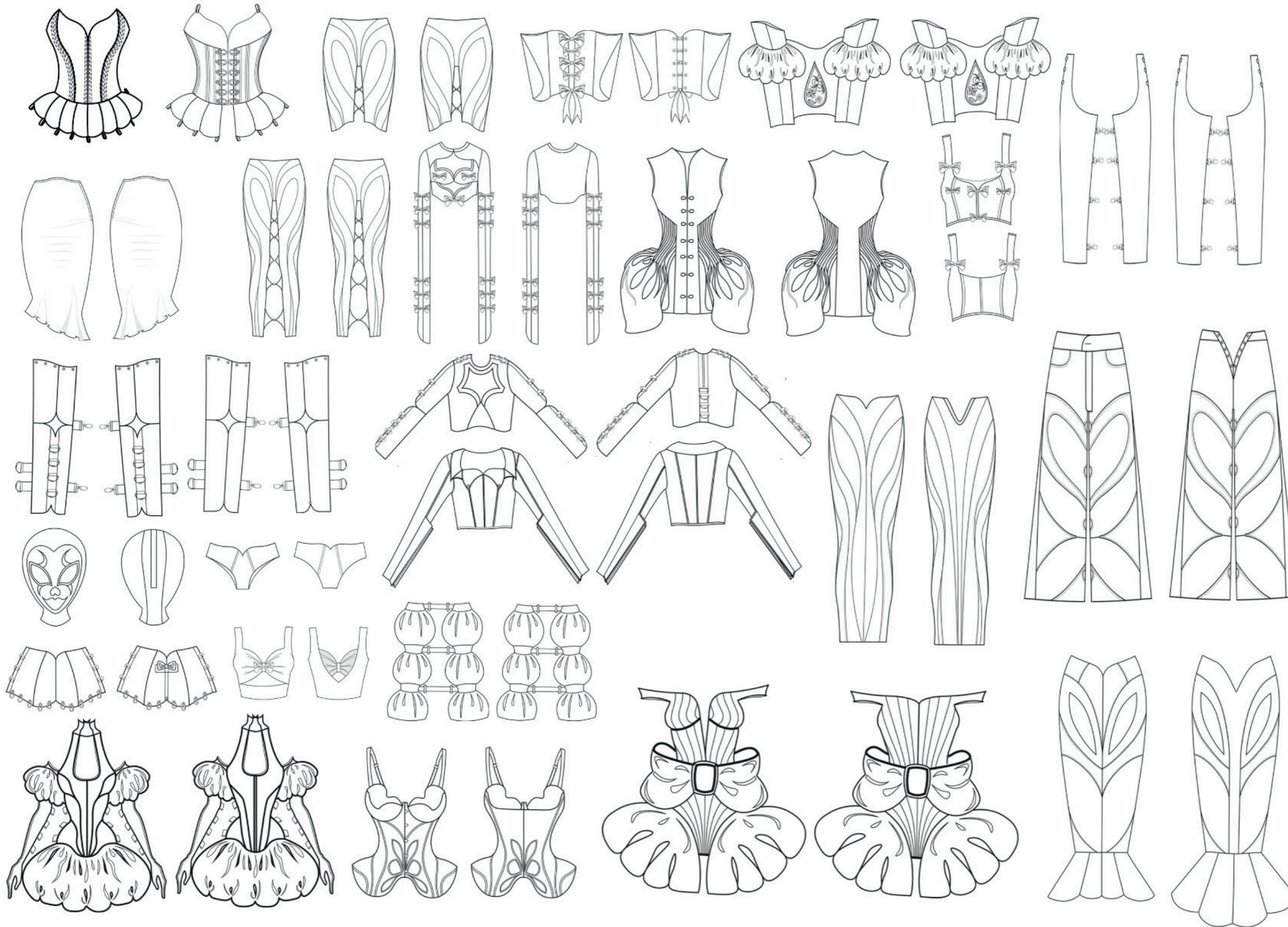
Strappado Sample 2



Strappado Sample 1



# *Time for Play Range Plan*



*Leather*

*Latex*

*Bondage*

*Service*

*D/S*

*Dolls*

