

## The Story Behind





**WEARBLE CRAFT:**

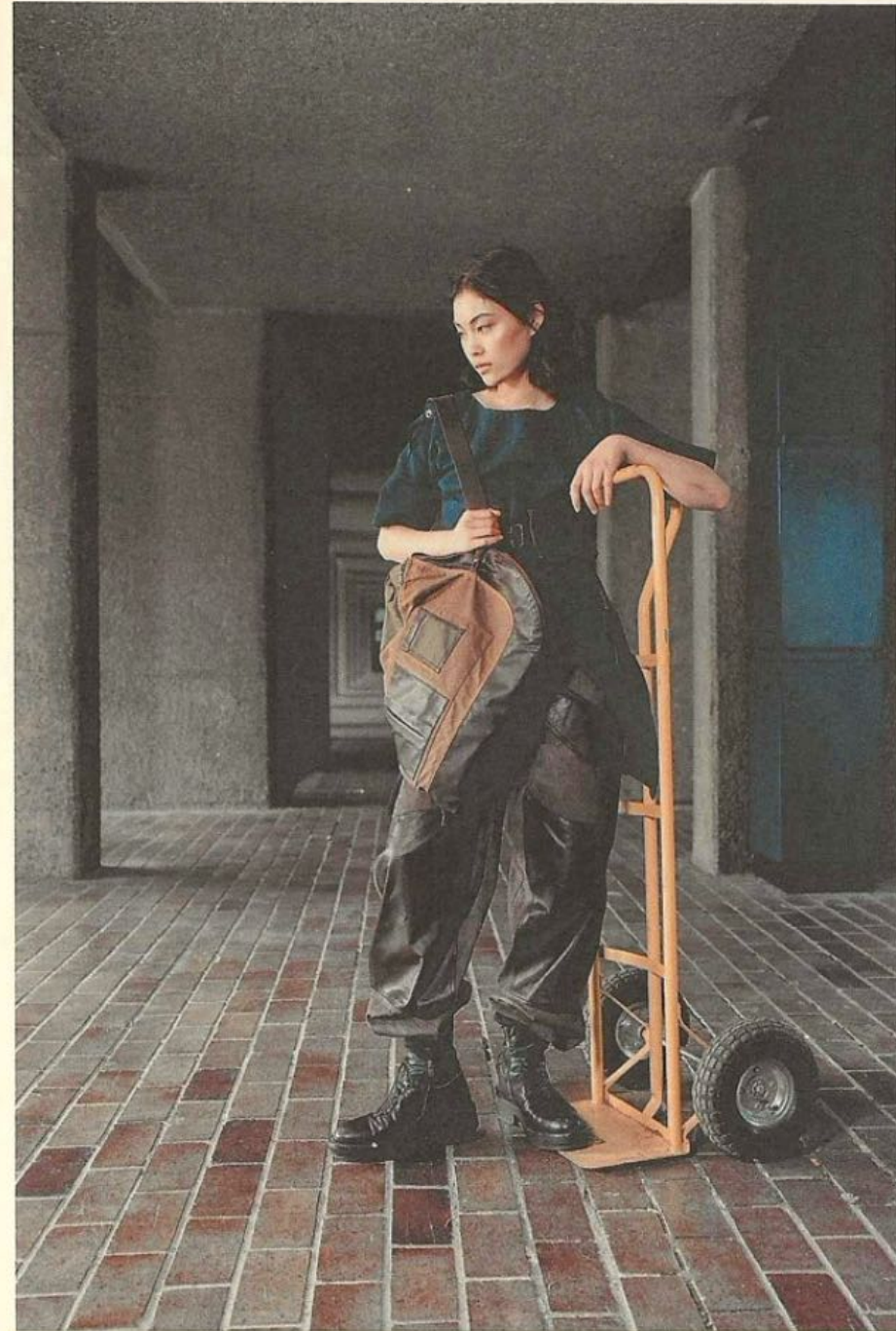


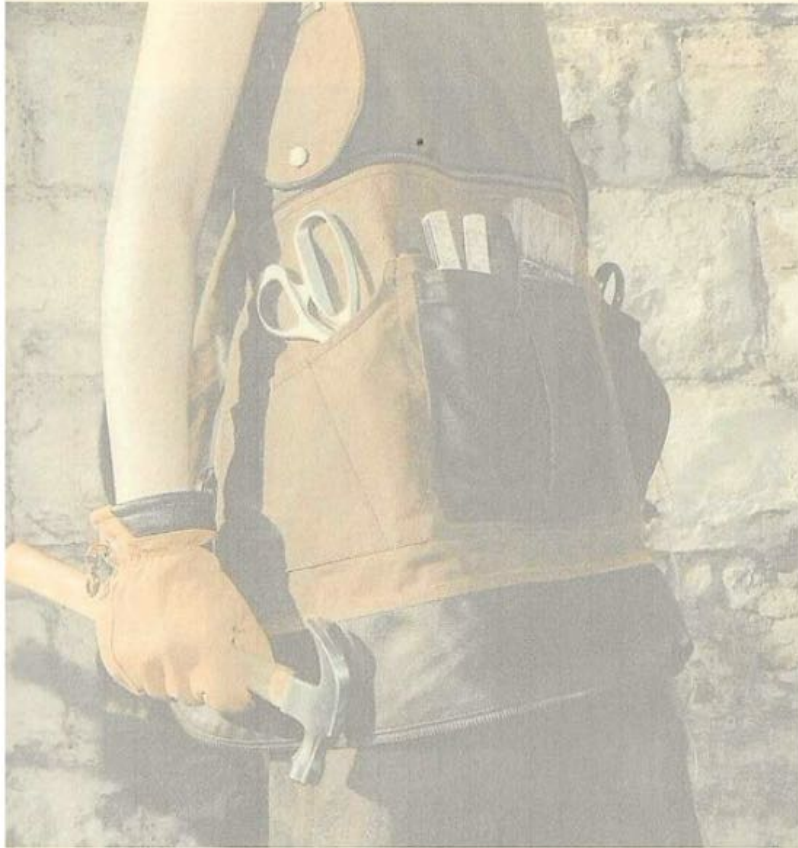
TRACING LABOR THROUGH TRANSFORMATION

Xinmeng Zhang  
LCP WW VS  
2025 FMP

**“Designed  
to  
transform  
with the body,  
becomes the tool,  
and  
remembers the work**

**What the body carries,  
the garment becomes.”**



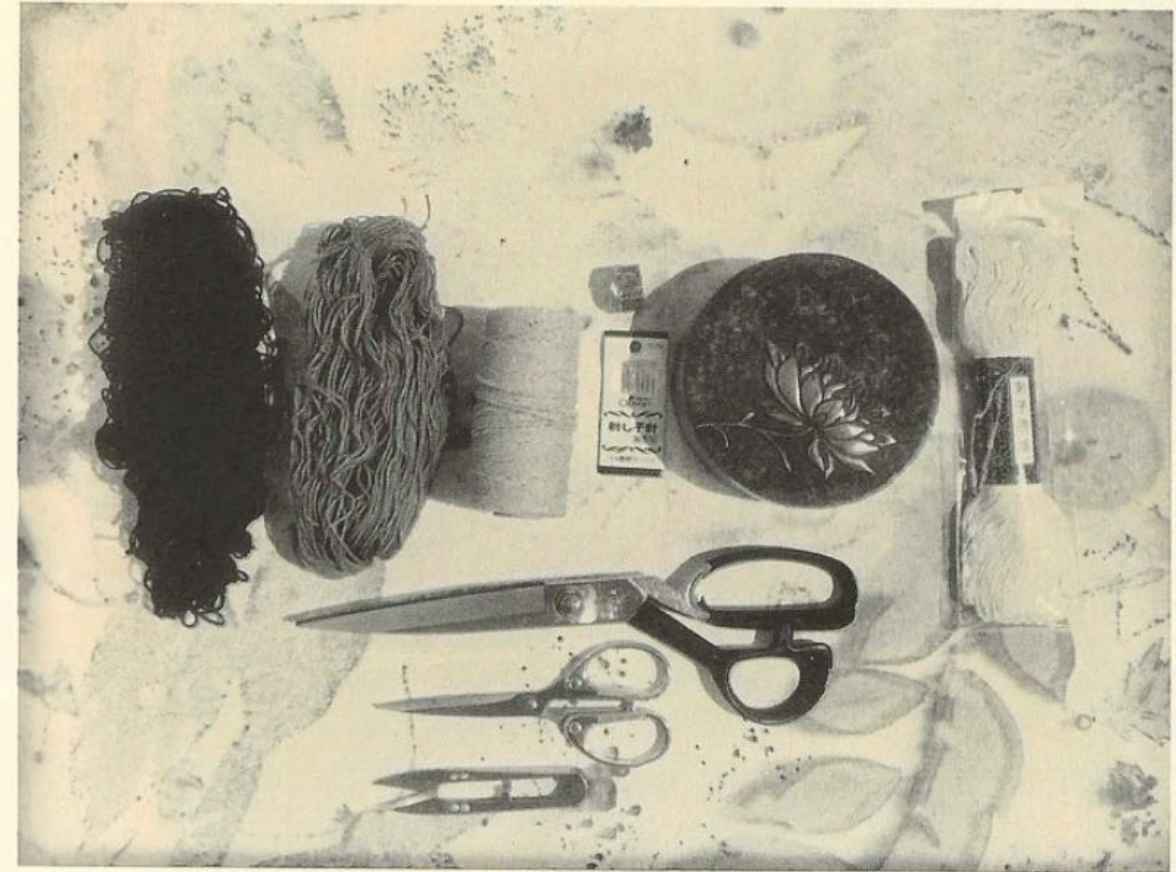
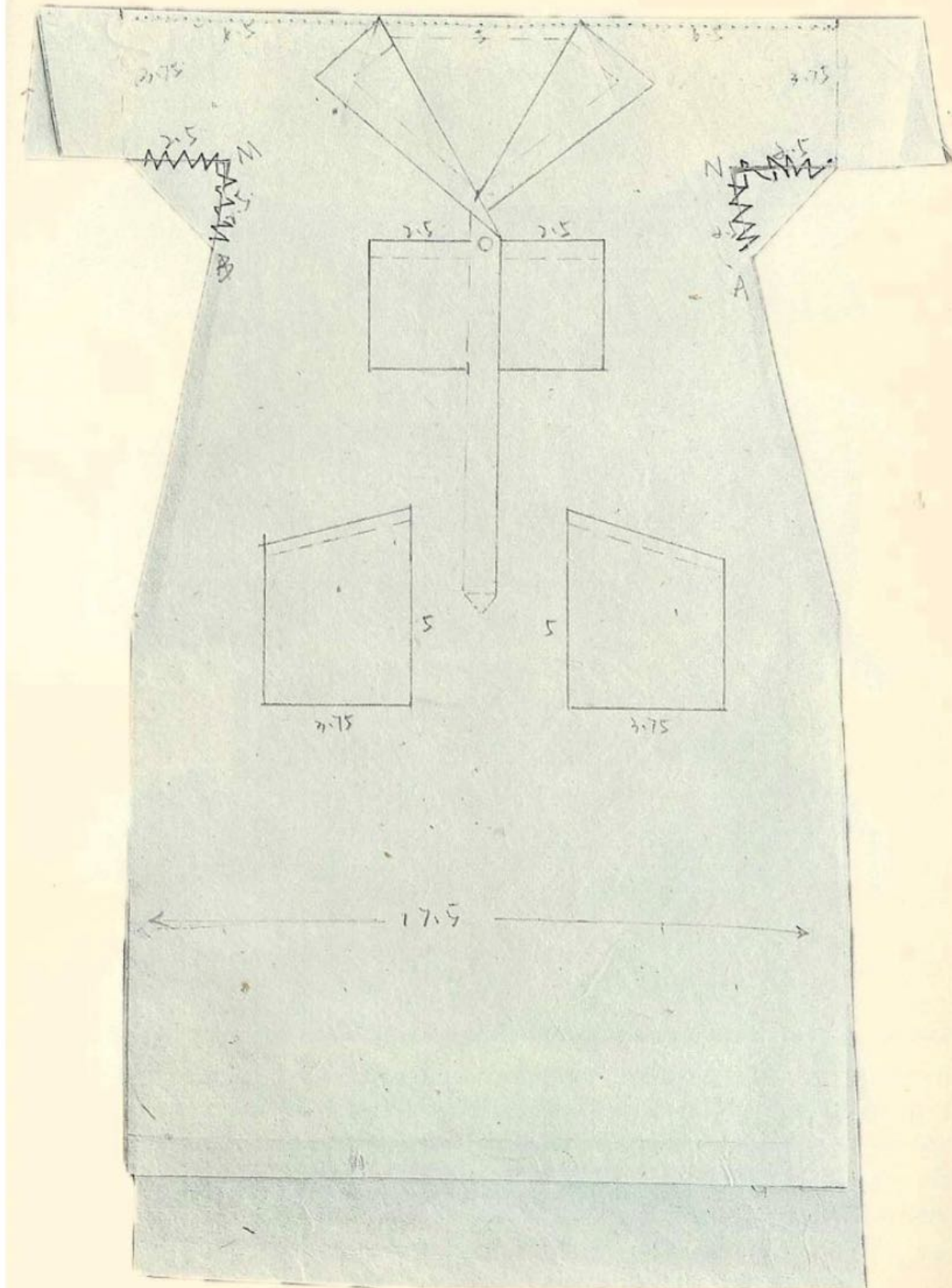


## Manifesto

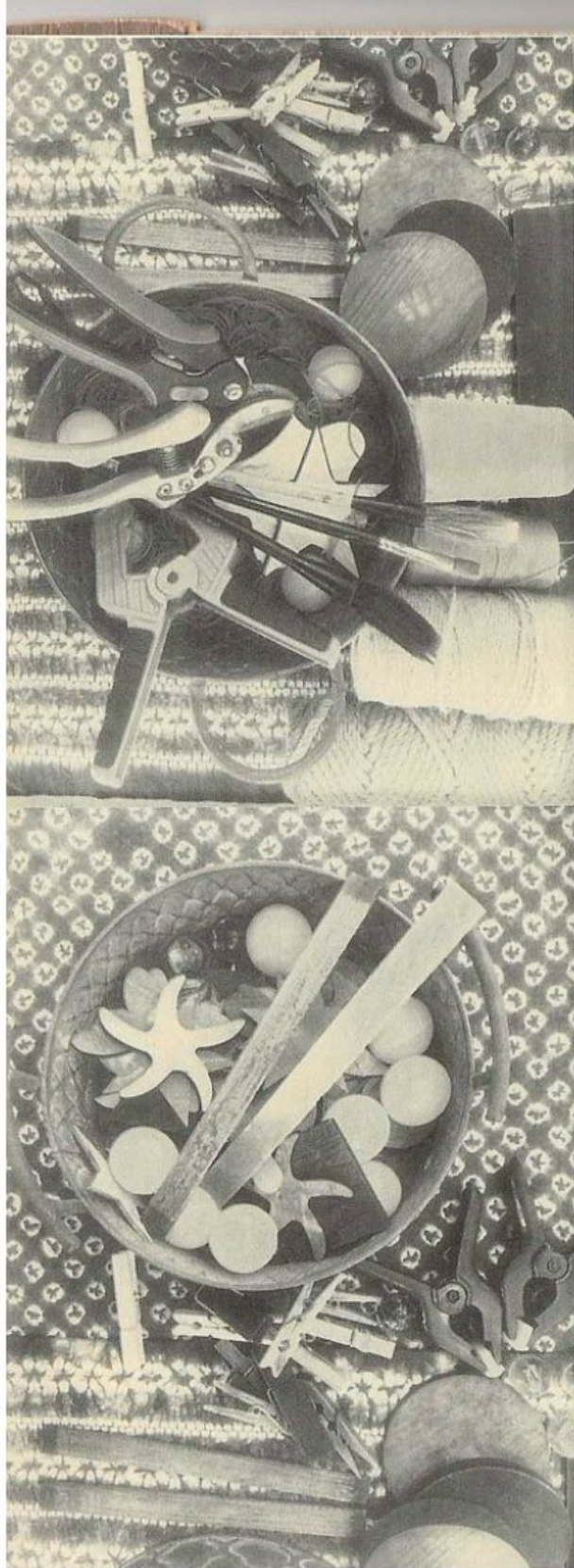
This project reimagines workwear for craftspeople, merging functionality and transformability into garments that evolve with labor. Inspired by my father's daily working life at his tie-dye workshop and the traces left by tools, time, and touch, I seek to design clothing that is both a tool and a canvas. Each piece allows artisans to carry their essential instruments with ease, turning mobility into a seamless extension of their craft. As the wearer works, the garments record their labor — stains, folds, and textures becoming living marks of dedication and artistry. In this way, clothing becomes more than protection; it becomes a dynamic archive of a maker's journey. Through thoughtful construction and material innovation, I aim to honor the spirit of craftsmanship by creating garments that are not static, but transform and accumulate meaning with every movement, every task, and every passing day.



**"He often worked in a cotton vest over a T-shirt, with denim or utility trousers — moving between the hills, the courtyard, and the workbench, where he would spend the entire day, quietly absorbed."**

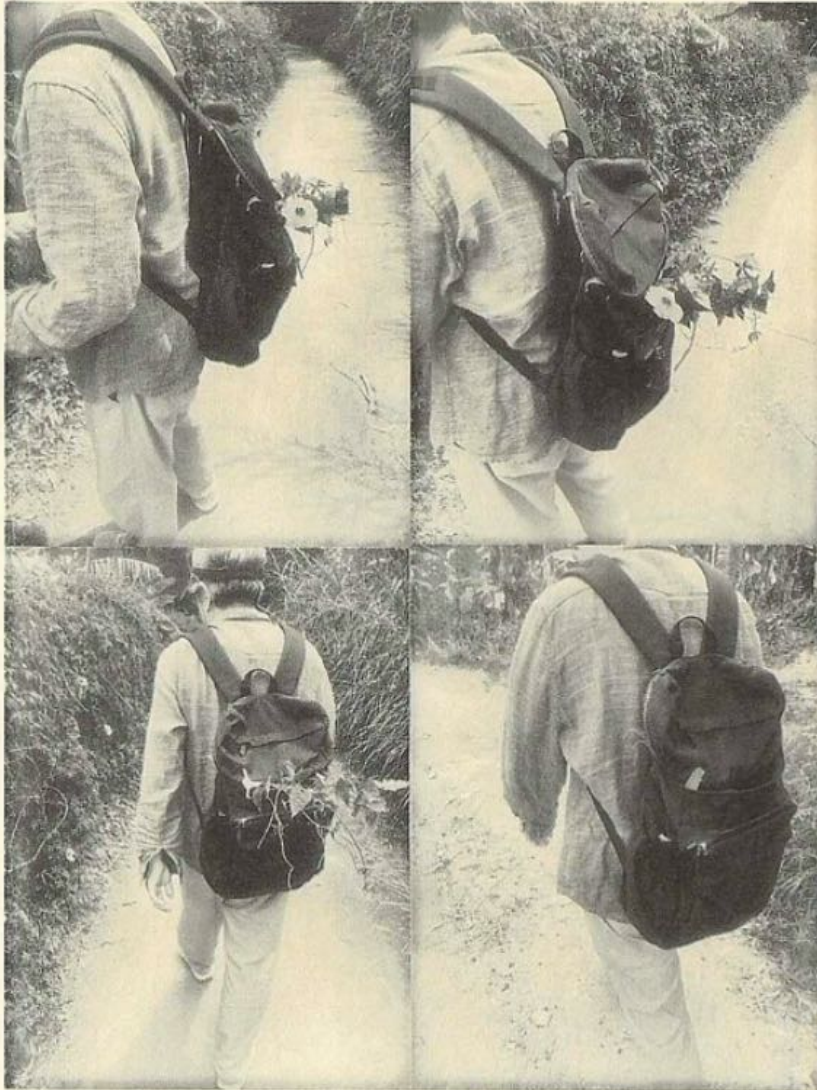


"He got lots of tools for dyeing."  
"How can a design efficiently carry the essentials he needs to keep close at hand?"



"There are personal things I want to also but inside my bag when I'm working" He said.

## Wear to Carry



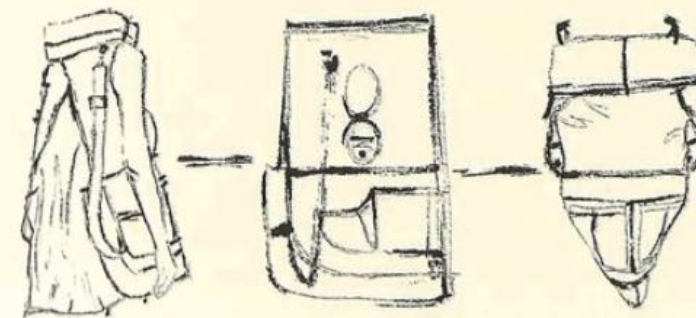
“He always carried a backpack into the hills before dyeing. Each time, it came back wet with leaves and flowers — a quiet part of the routine. I wanted to design a work garment that could carry what he needs — plants, tools, and the traces of his craft.”



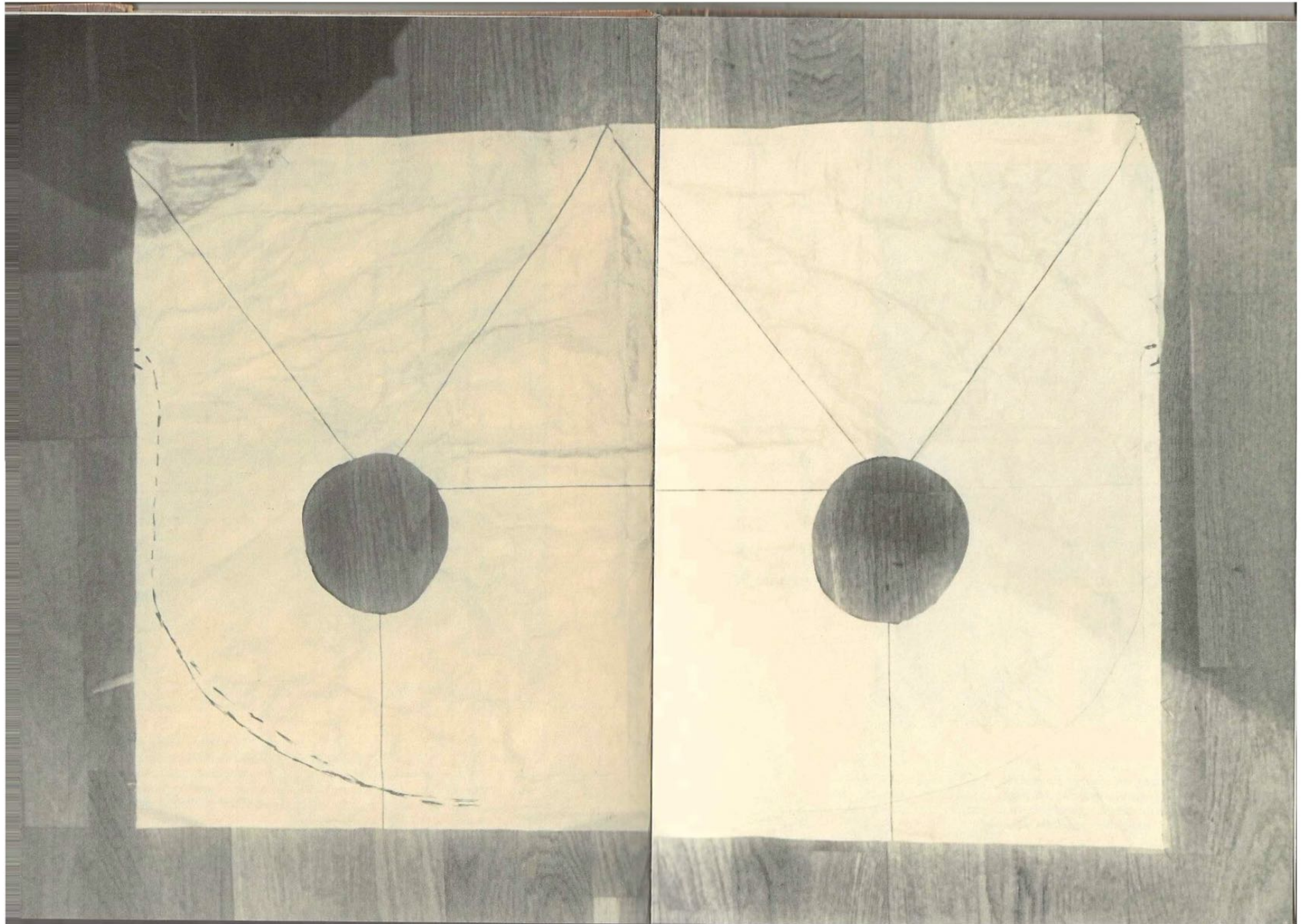
“Garment in worn form — a workwear-inspired silhouette with functional pockets.”



“Backpack form: referencing one-piece pack construction and my father’s carrying habits, this design explores wearable transformations into storage.”



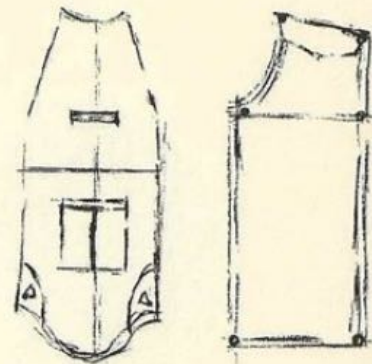
“By folding along specific lines and securing hidden fastenings, the garment transforms into a backpack — functional and ready to carry.”



"A blend of work apron and casual dress — with just enough pockets for tools or daily essentials. Made to move between craft and everyday life."



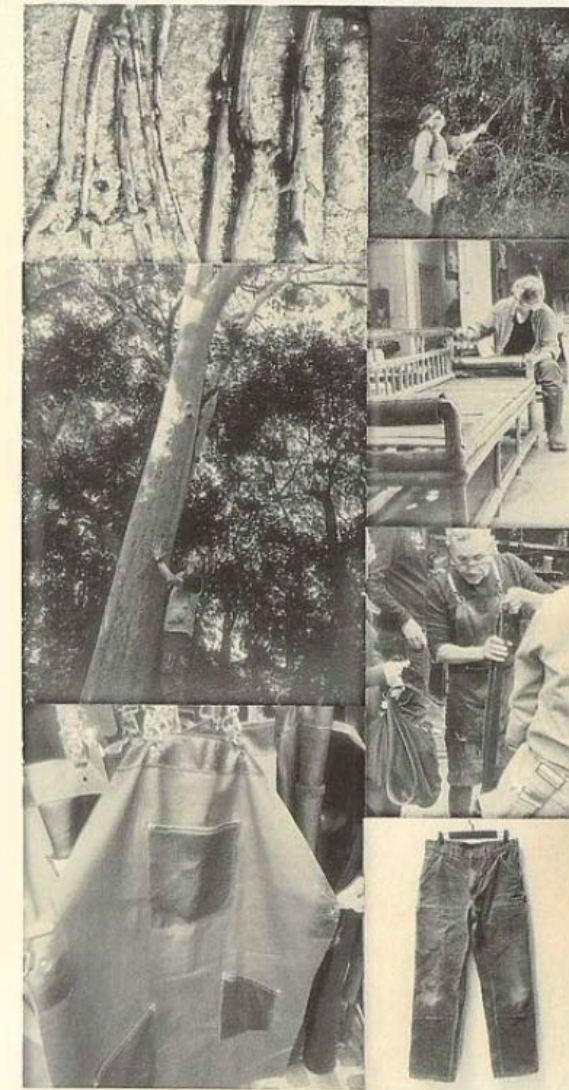
"Reinforced panels at high-stress points provide durability and protect the body during physical work. Materials like waxed cotton or leather that offer surface protection against scratches, moisture, or contact with tools."



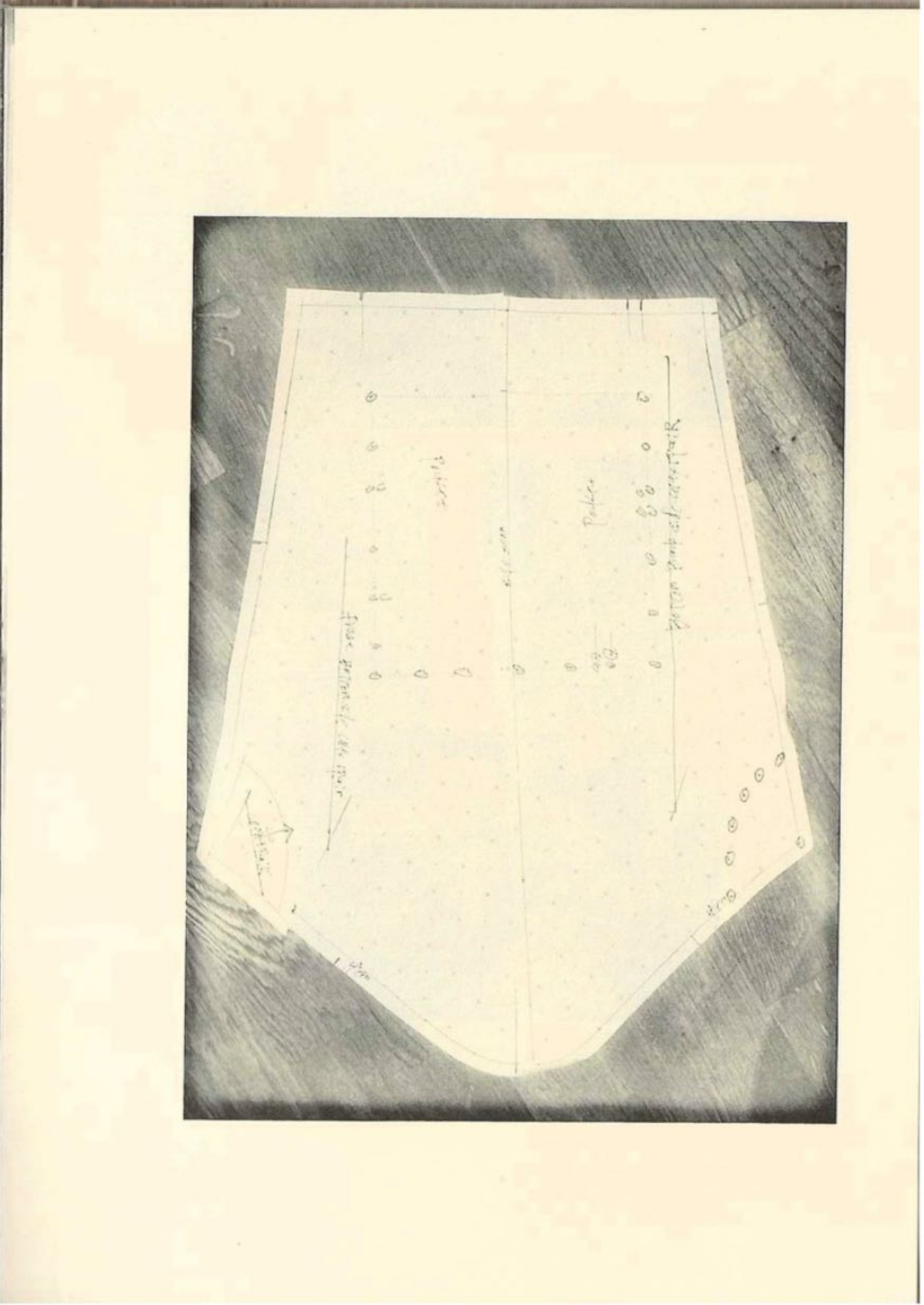
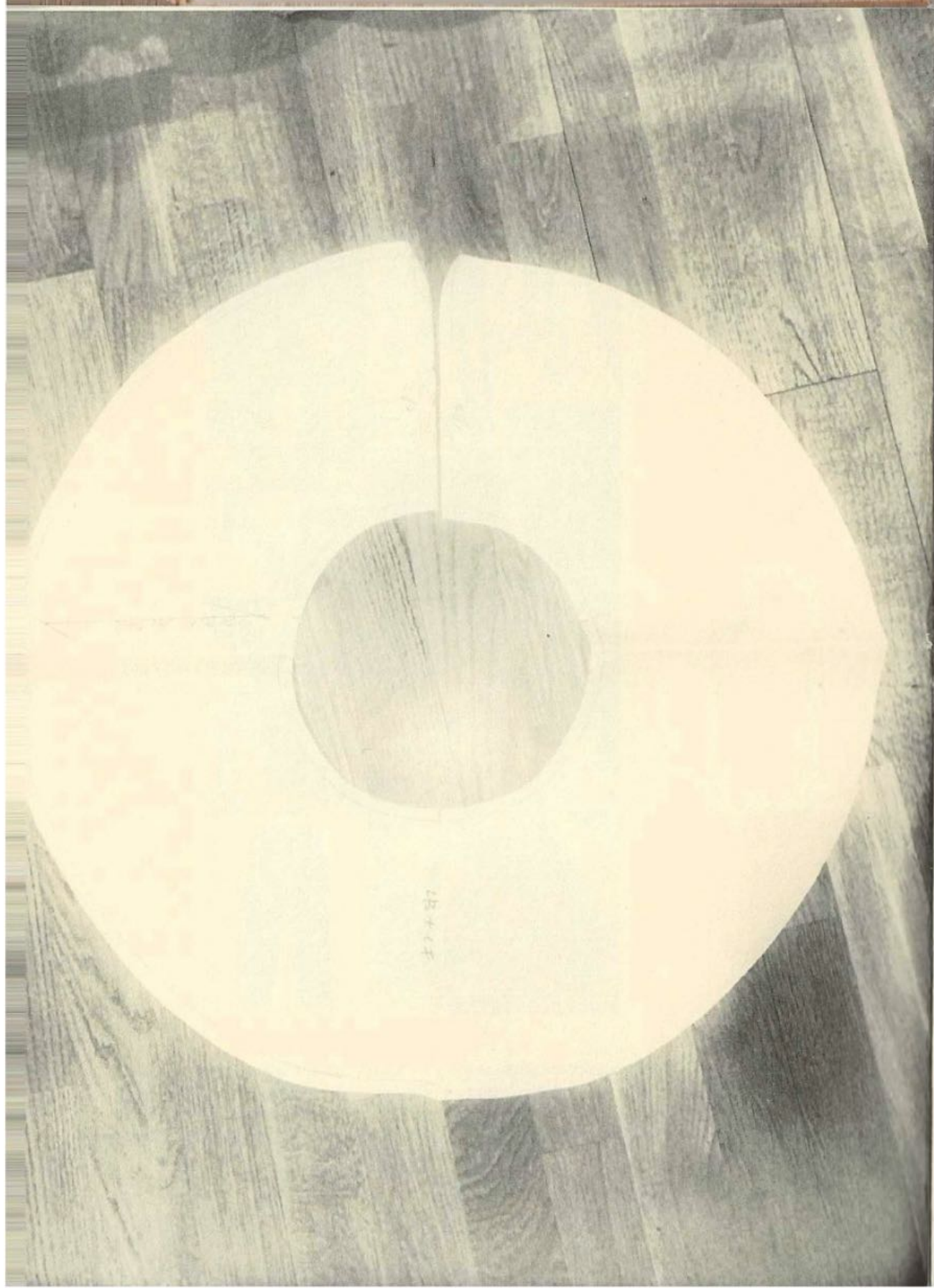
"A reinterpretation of Carhartt-style logger pants with added pockets — durable, practical, and made for craft."



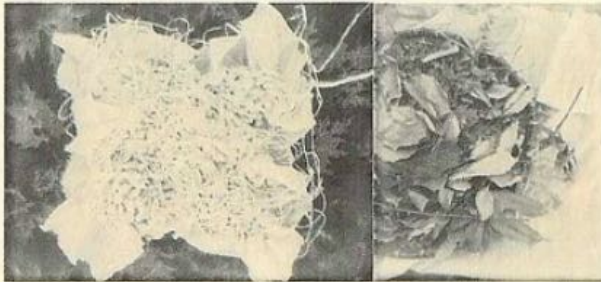
## Wear to Protect



"He practices woodworking by hand, often collecting discarded branches from the hills to build furniture or decorate his studio. Garments like reinforced logger pants or leather aprons can help protect him in the process — both practical and rooted in the rhythm of his craft."



## Wear to Trace



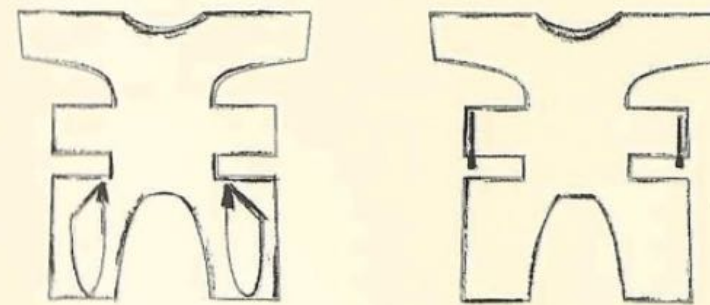
"The dye speaks in folds, the stitches remember his touch. From these gestures, I gather forms for my design."



"Red threads trace the curves I want to hold onto — mapping where the dye will land. The process and its marks remain on the garment, waiting to be revealed in the final unravel."



"Flat-cut and sewn entirely by hand, his first garment traces memory in form — a quiet prototype of craft and care."



"From a single piece, pockets unfold and straps take shape — a work garment where function grows gently from form."

