

# Nightmare: The Heavy Reality

This project originates from a recurring dream involving metal hooks and suspended cattle-images that merge stillness, exposure, and control.

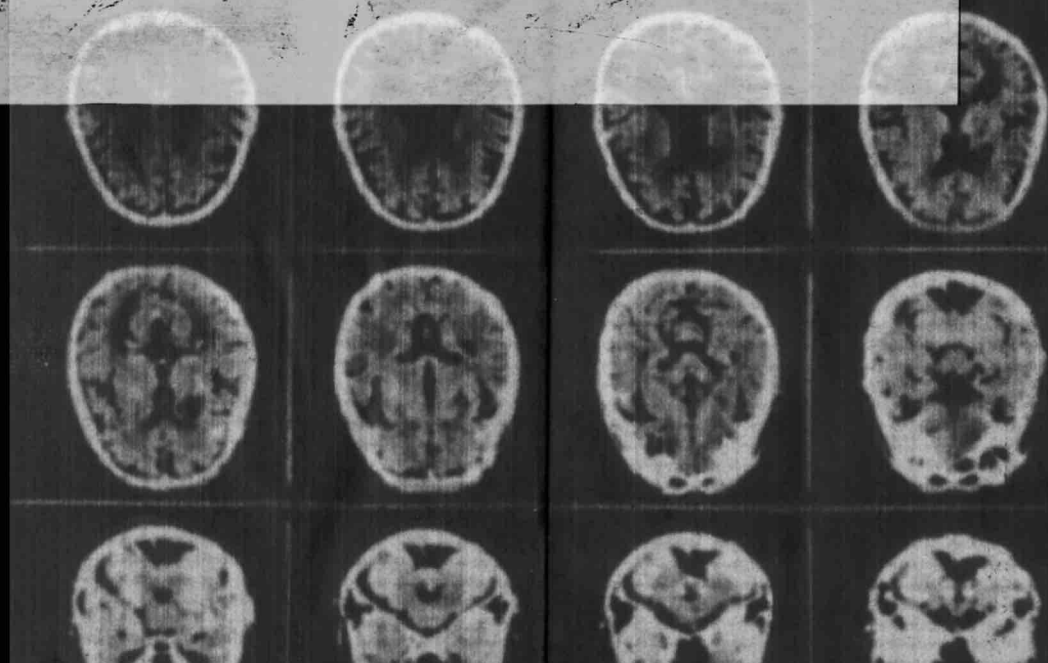
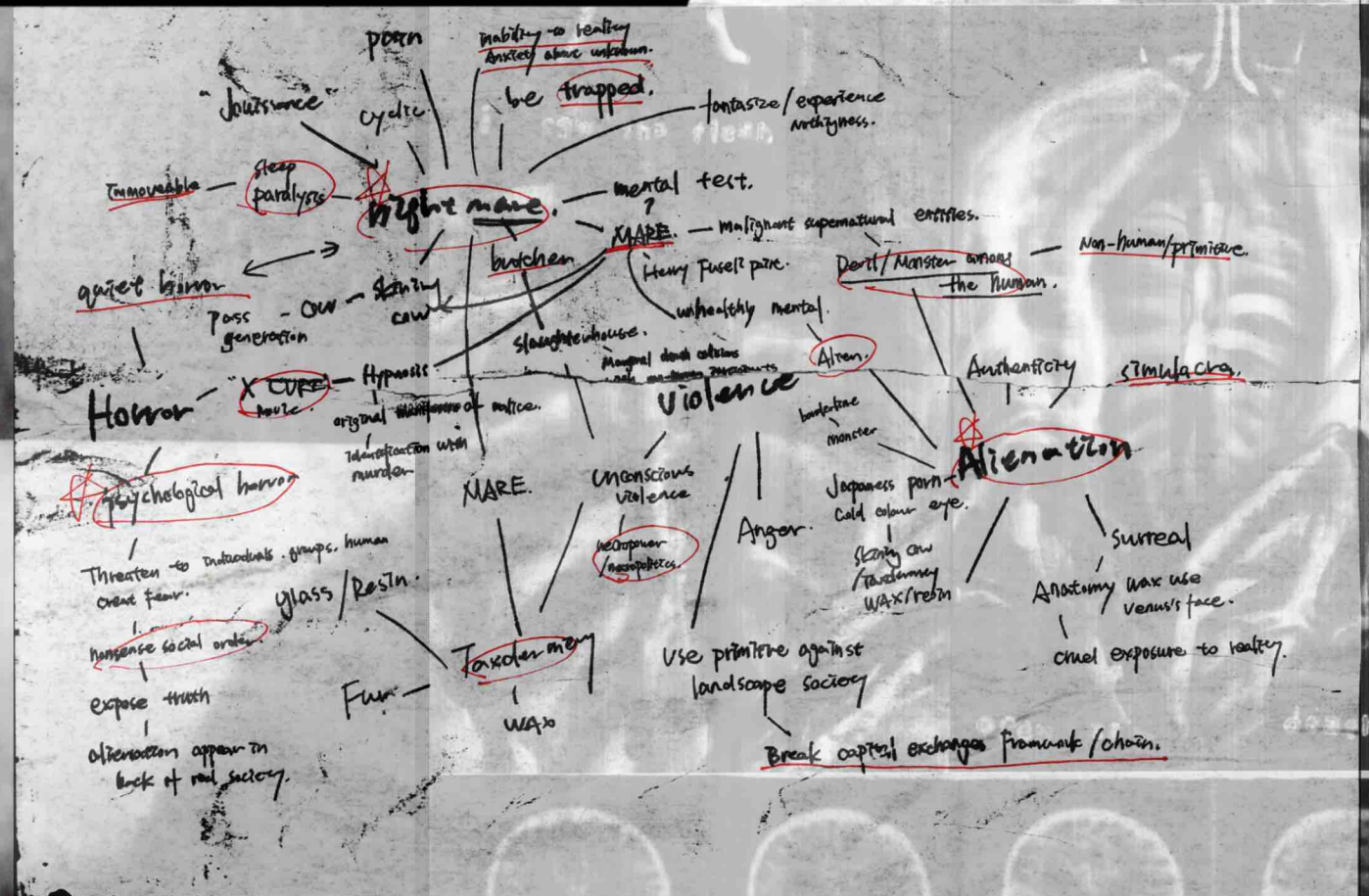
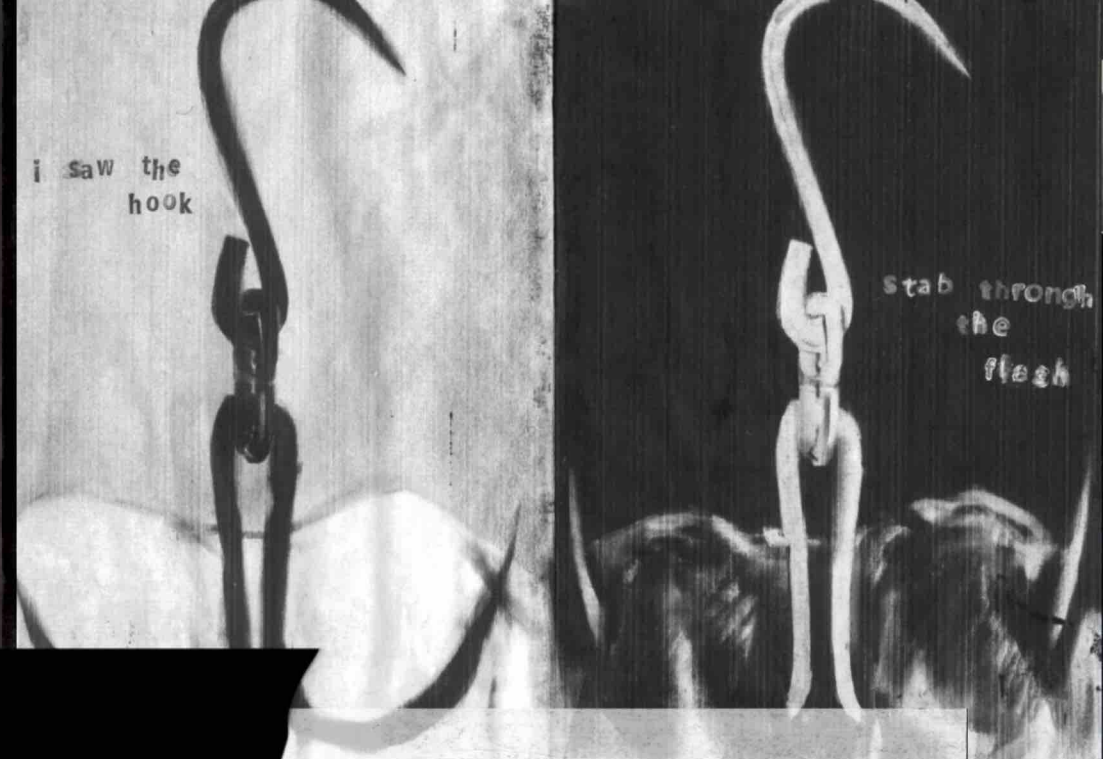
In the dream, the body is restrained yet hyper-aware. It raises a question: is the dream an extension of reality, or a reality in itself.

Through wearable structures, I explore the boundary between softness and rigidity, submission and resistance. Metal is shaped through forging and welding, forming components that suggest suspension, tension, and control.

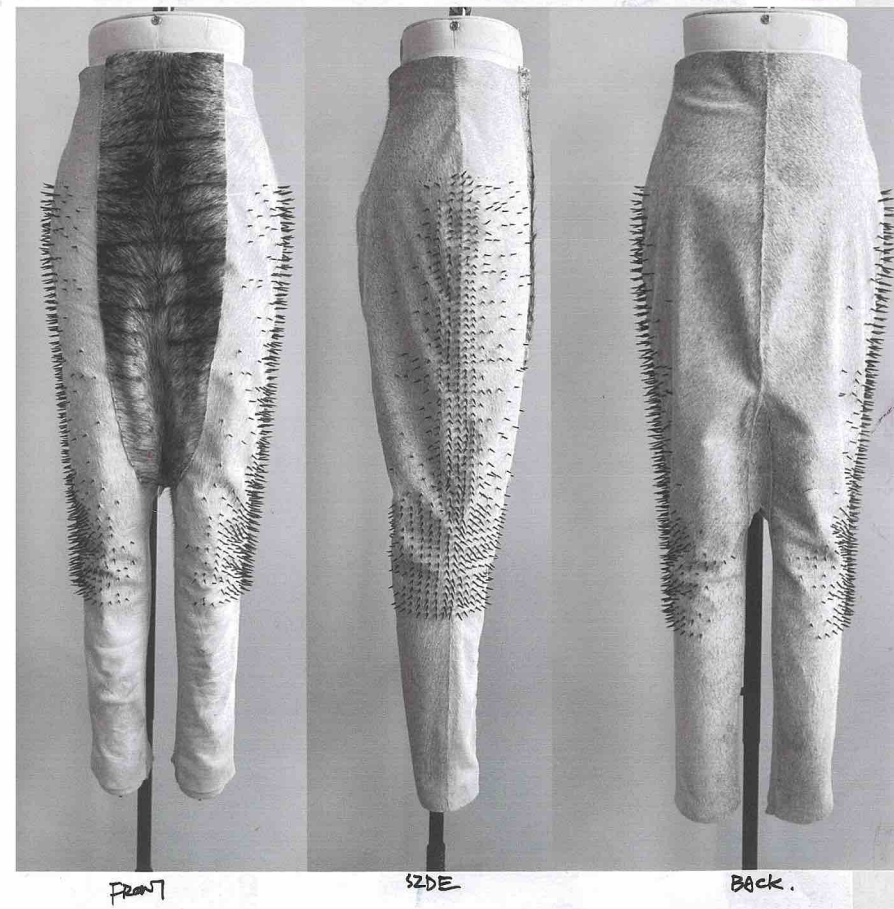
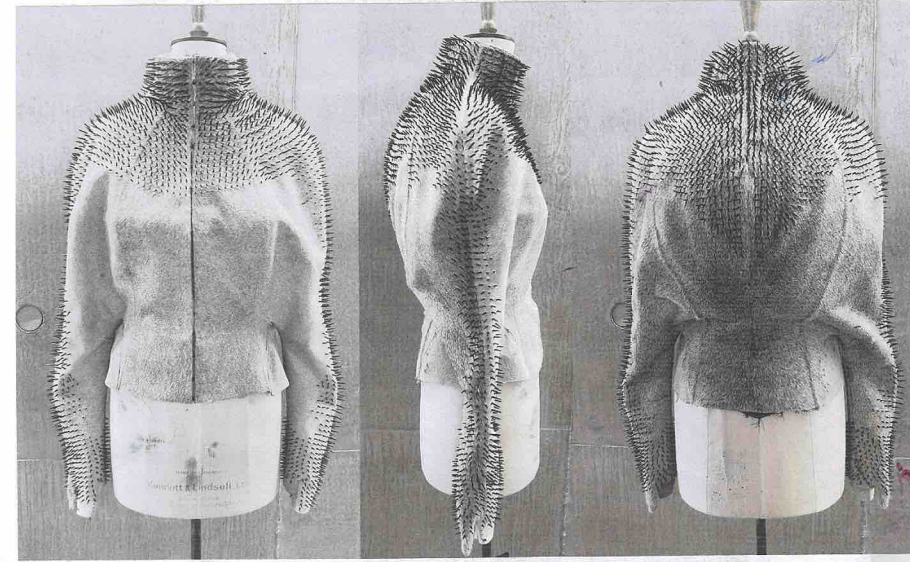
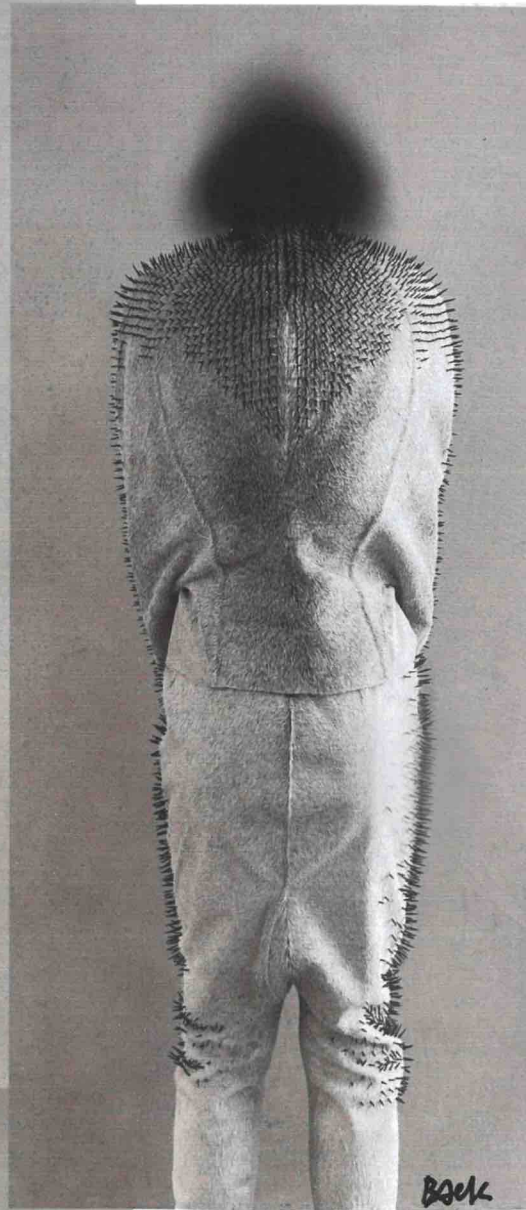
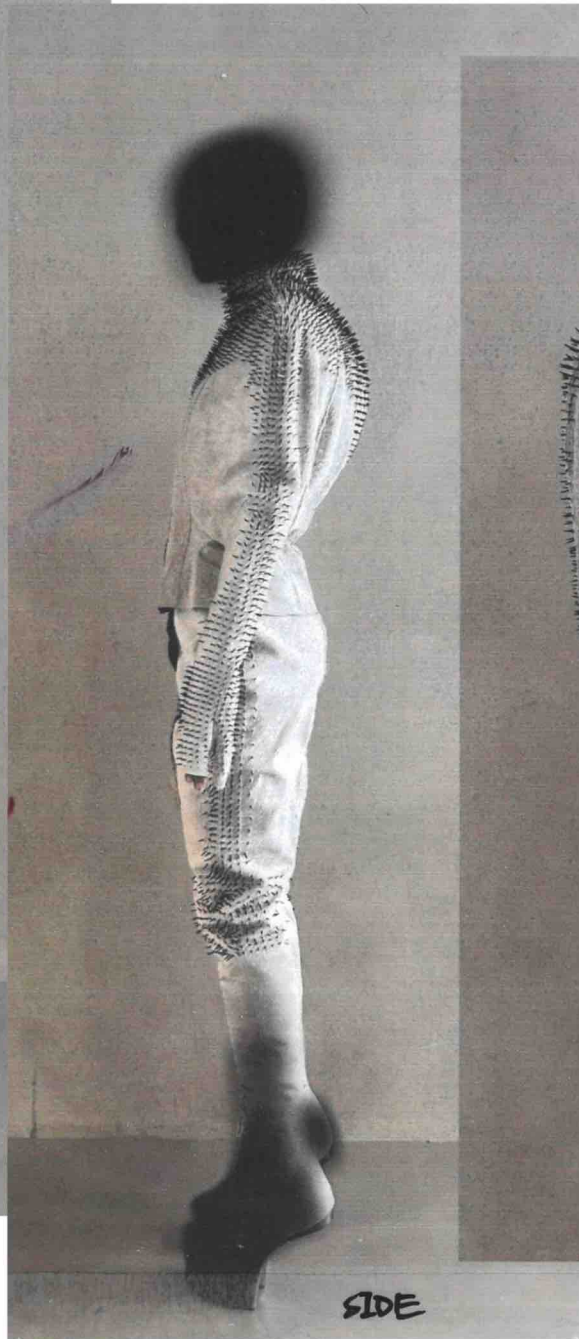
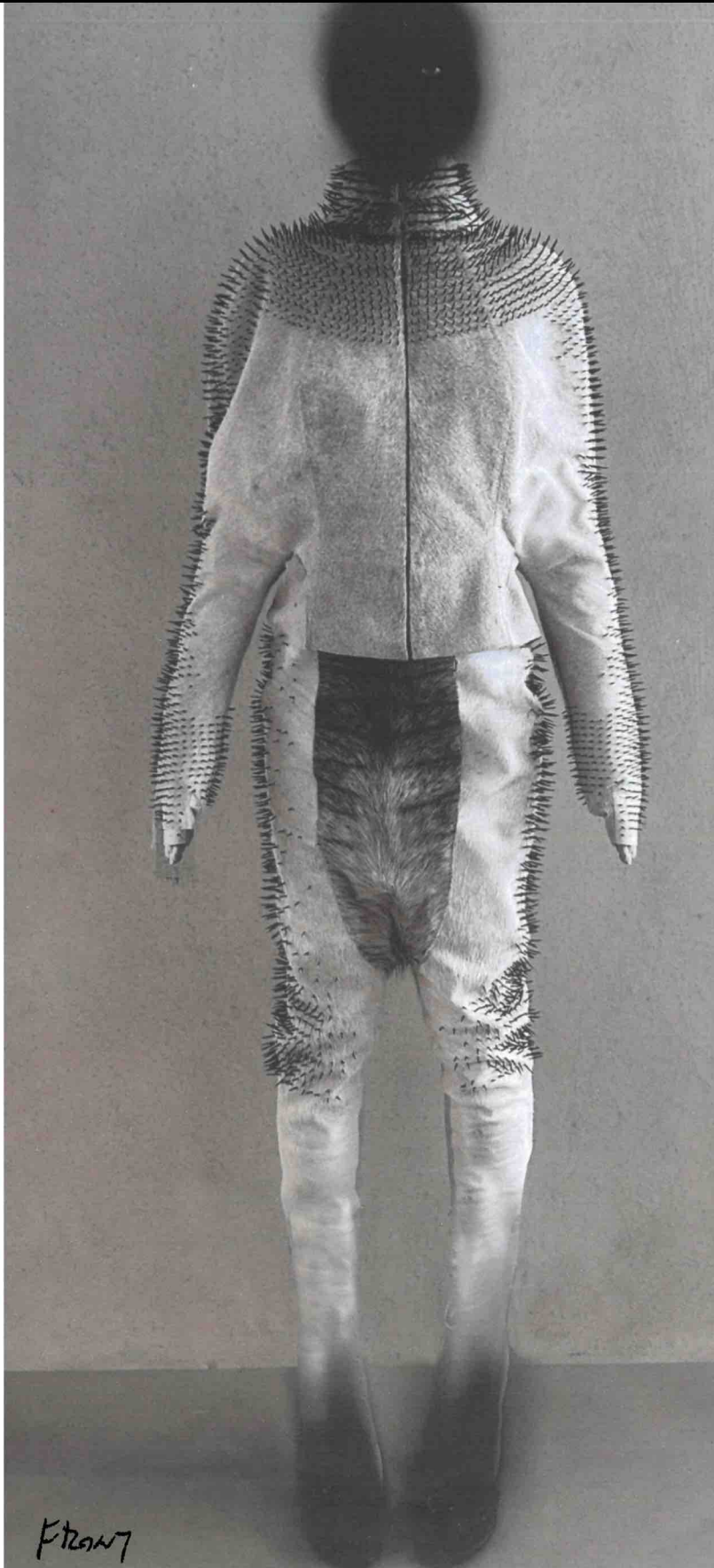
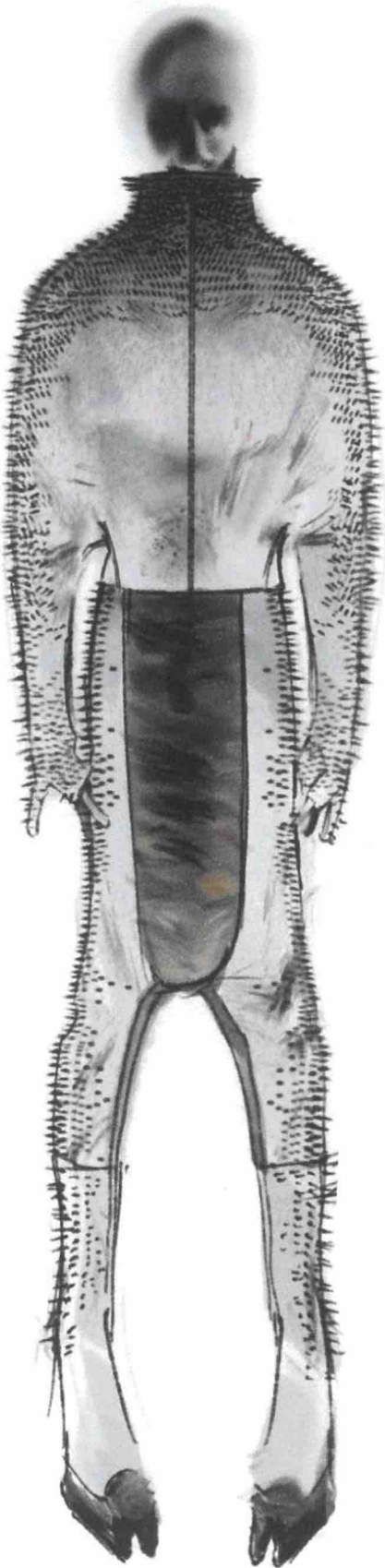
It is juxtaposed with sheer tulle-light, translucent, yet capable of resisting force through layering and tension.

Cowhide and pony hair are treated as extensions of skin—once organic, now restructured into wearable surfaces.

The project reflects on how material, body, and perception interact at the threshold of dream and reality.



FINAL PROTOING (Look 1)



CLOTHING DETAILS

FINAL PROTING (LOOK 2)



METAL VEST DETAILS

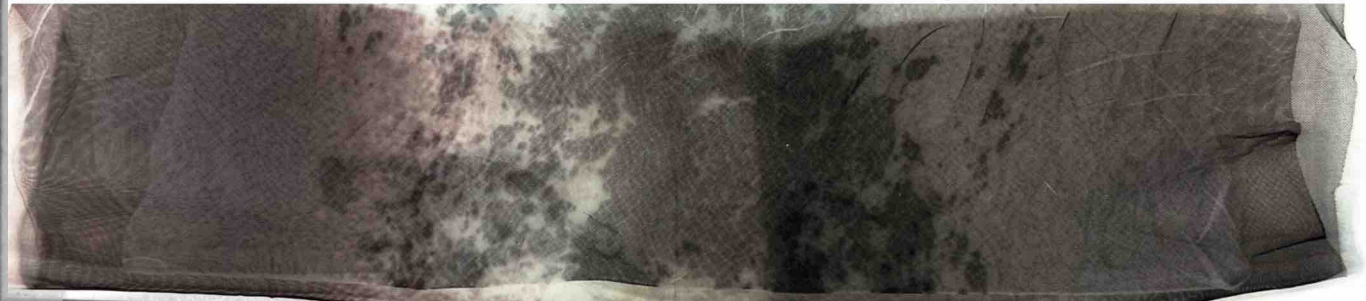
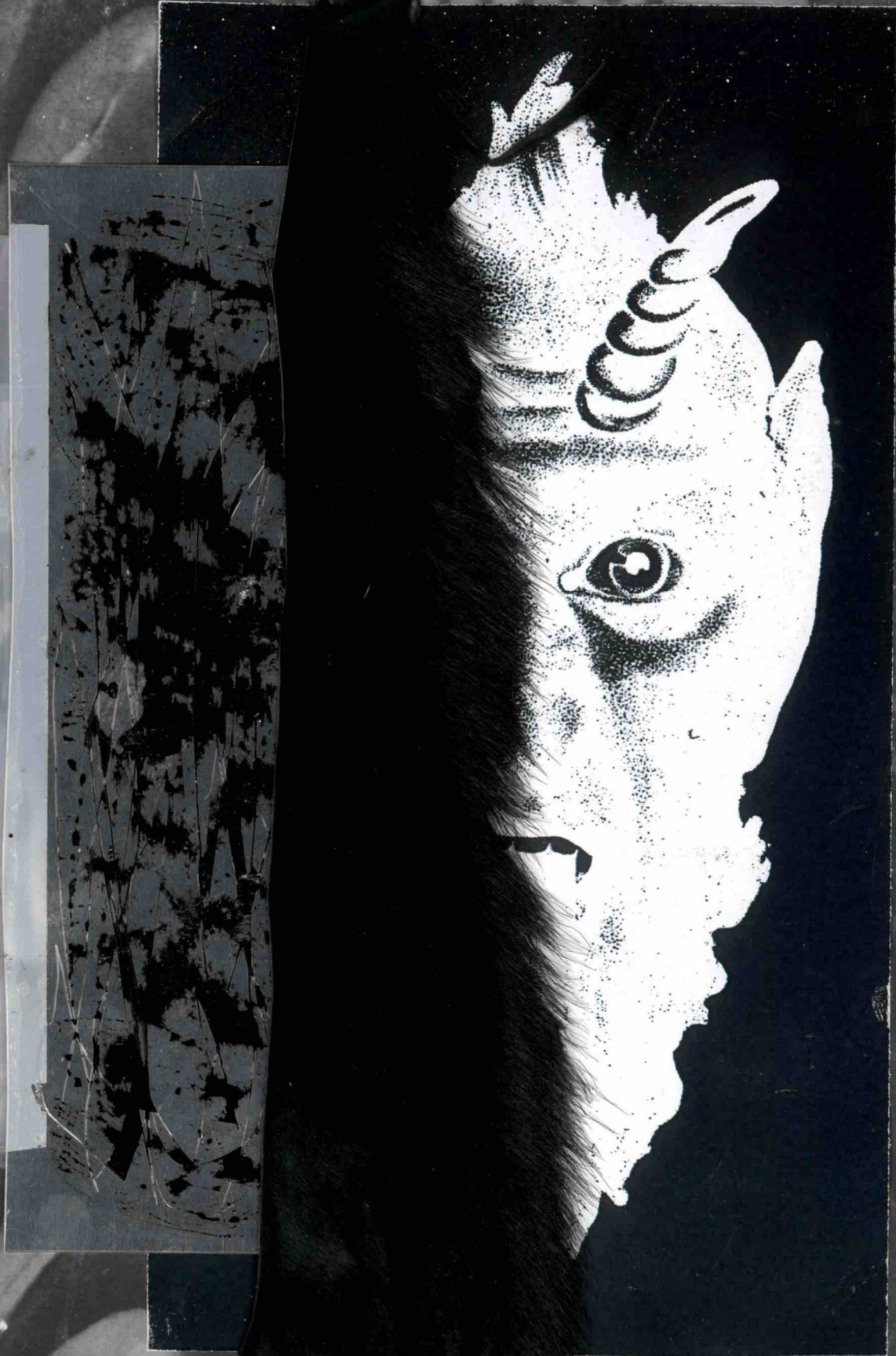
Front



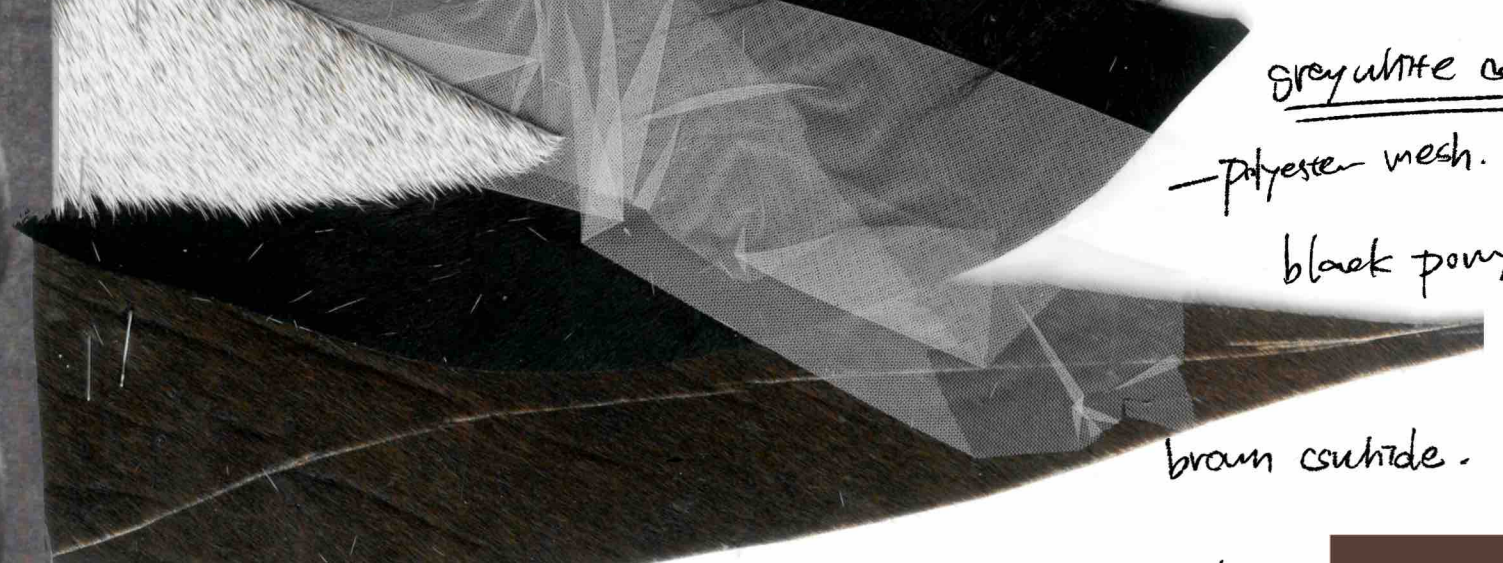
Back



Fabric / colour Board



pratt mesh  
black fur  
thin canvas  
grey suede



grey white suede  
polyester mesh.  
black pony hair

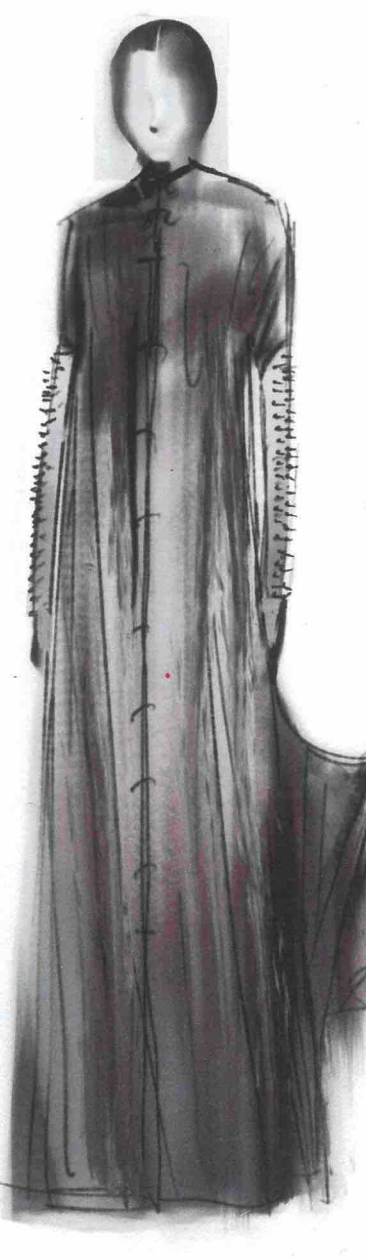


brown suede.

metal

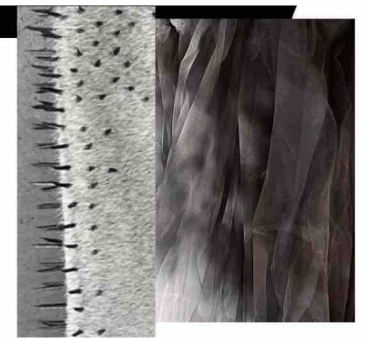


# FINAL LINE-UP



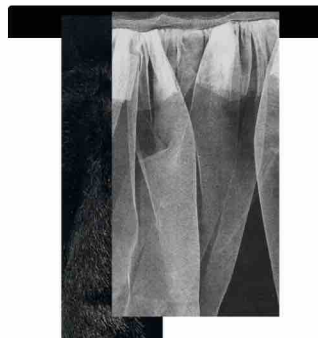
Look 1.

- layers print dress
- Nails outside glove



Look 2

- pony top
- mesh trousers



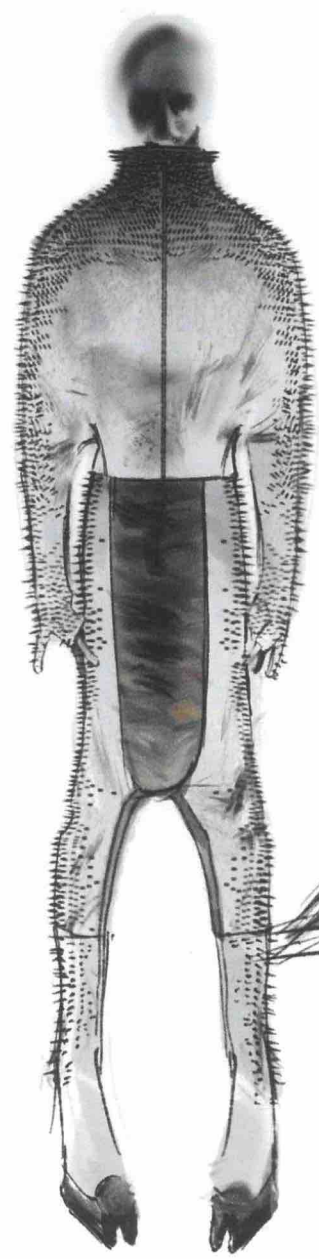
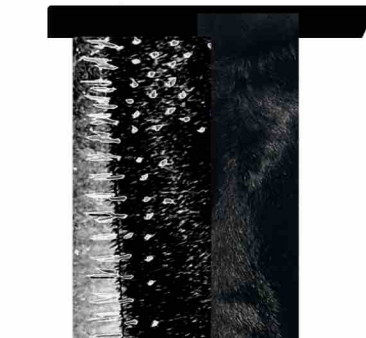
Look 3

- White/grey nails jacket
- print mesh twist pleat trousers.



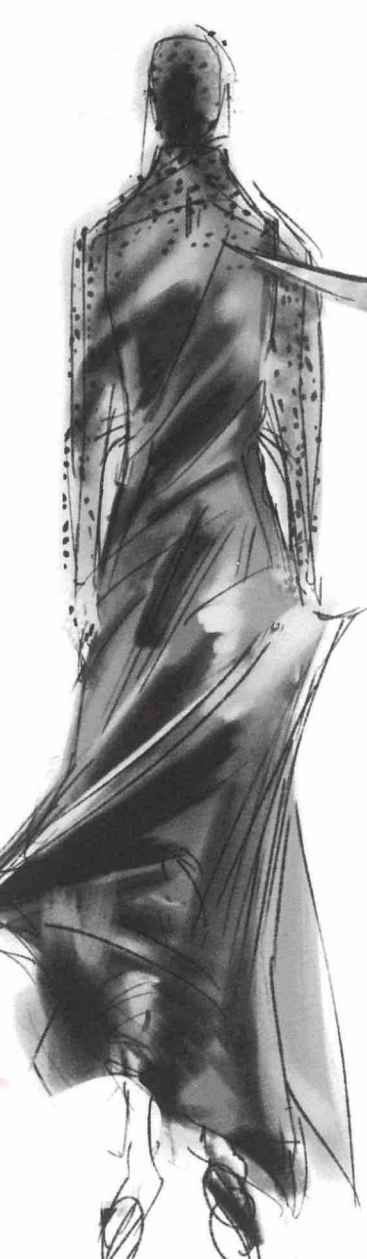
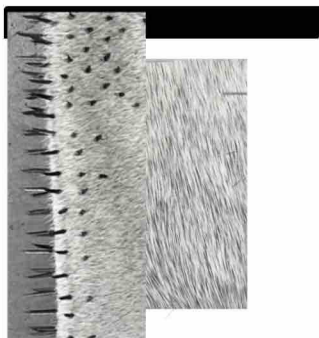
Look 4

Long nails black pony coat



Look 5

- Nails outside jacket
- Nails outside trousers



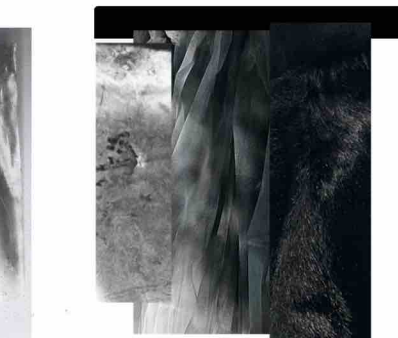
Look 6

- print mesh nails veil glove
- metal dress



Look 7

- metal vest
- print mesh layers pleat dress
- black pony glove



Look 8

- metal dress with outside
- outside nails glove

