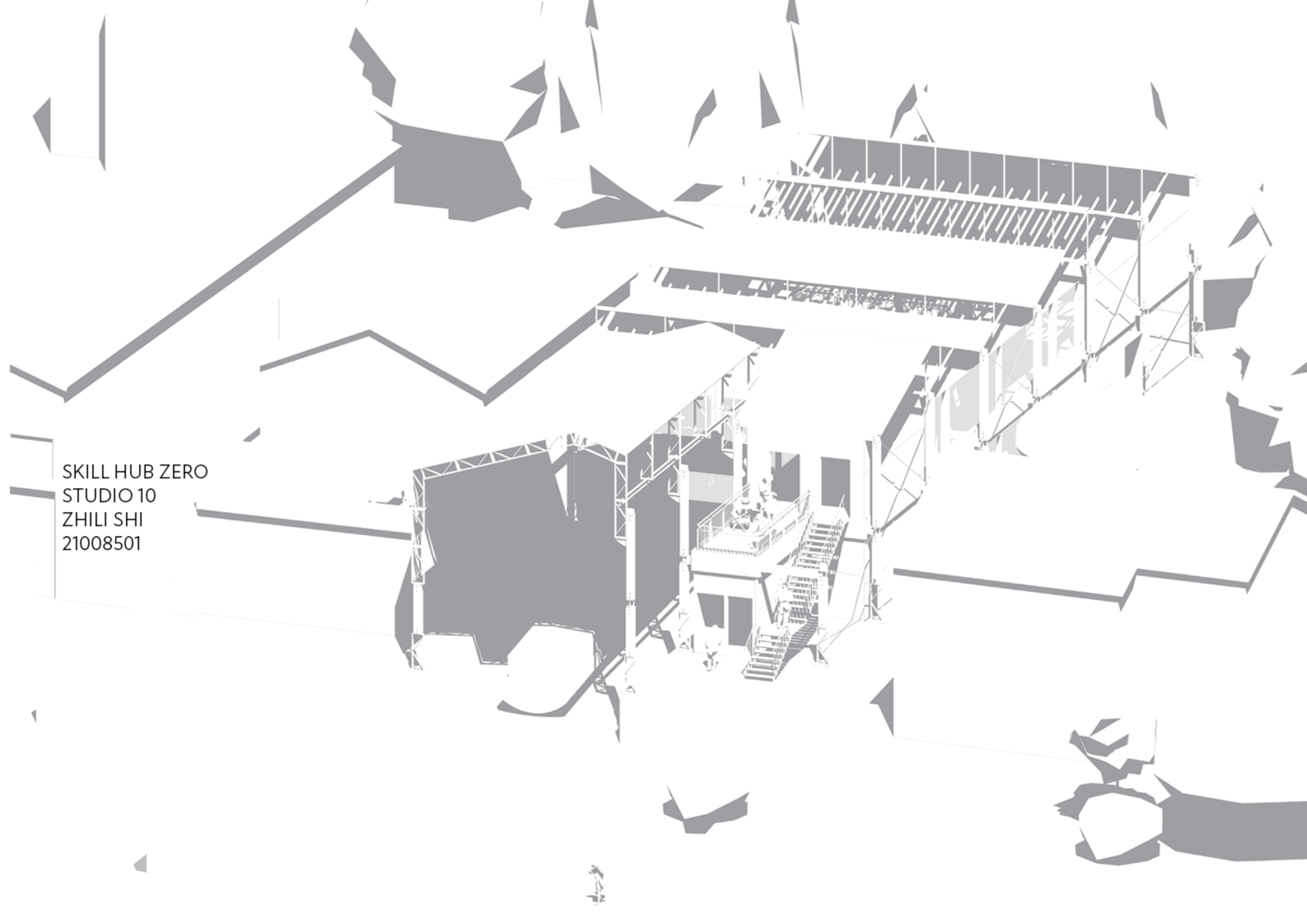


SKILL HUB ZERO
STUDIO 10
ZHILI SHI
21008501



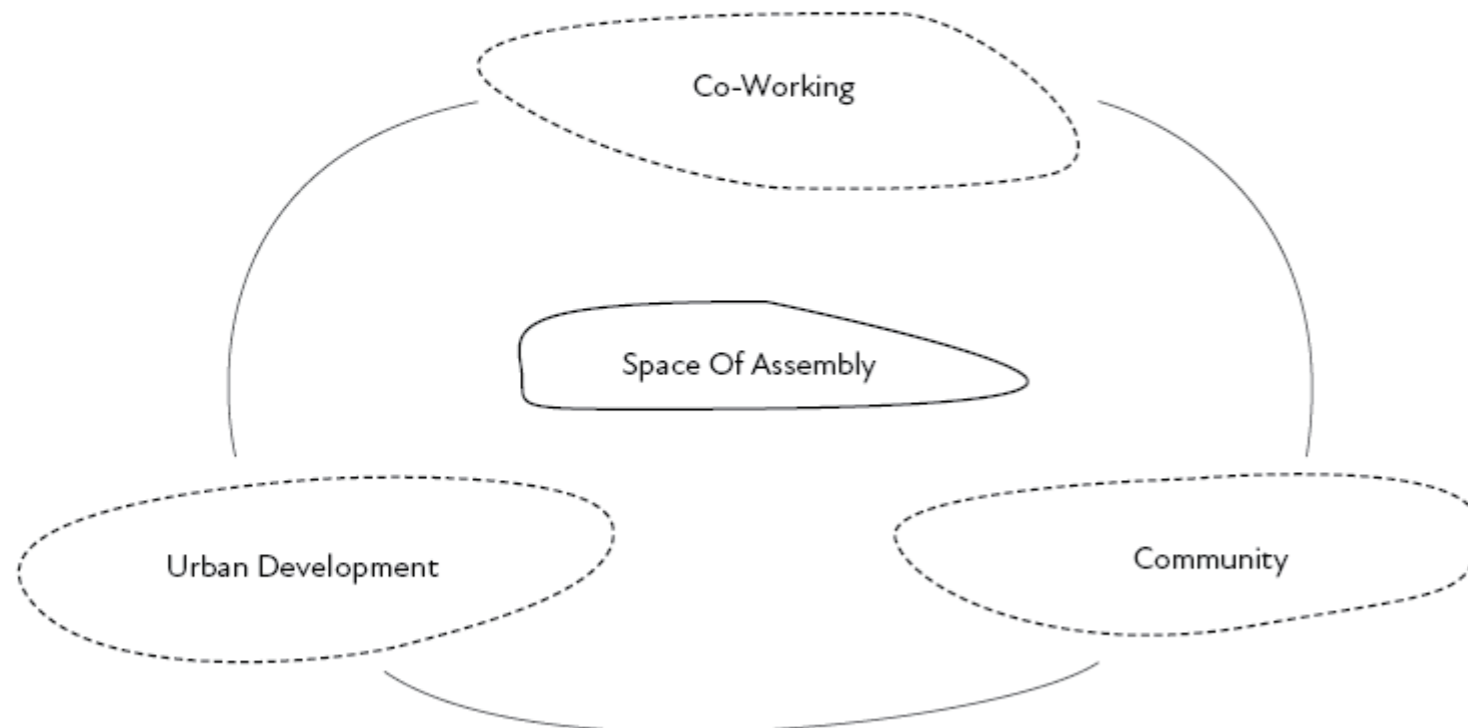
STATEMENT of PROJECT

The Eel Pie Island shipyard stands as a vital remnant of the island's rich history—one of resilience, creativity, and self-sufficiency. In response to the Space of Assembly brief, this project reimagines the shipyard as an adaptive, participatory space for skill-sharing and communal making. By preserving the site's industrial heritage while introducing new forms of engagement, the proposal reinforces the unique, self-organized culture that defines Eel Pie Island.

This project builds on that ethos by transforming the shipyard into a dynamic assembly space—a place where knowledge, tools, and skills are exchanged through hands-on collaboration. The intervention fosters a cooperative work-exchange system, allowing craftspeople, boat builders, artists, and local makers to engage in shared production while preserving the spirit of resistance against commercial development.

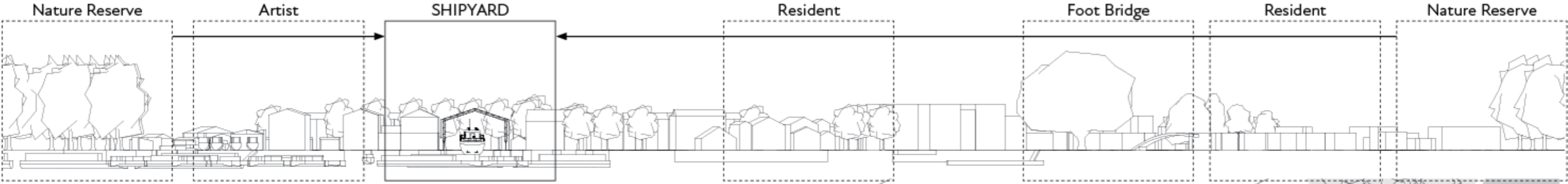
By engaging with commoning practices, this proposal envisions the shipyard as more than a site for craftsmanship—it becomes a social infrastructure that enables new networks of cooperation and solidarity. In a time when urban development threatens niche, self-sustaining communities, this project seeks to protect and evolve Eel Pie Island's legacy, ensuring its role as a living model of shared creativity and resistance.

"Skills is the key to assemble a community"

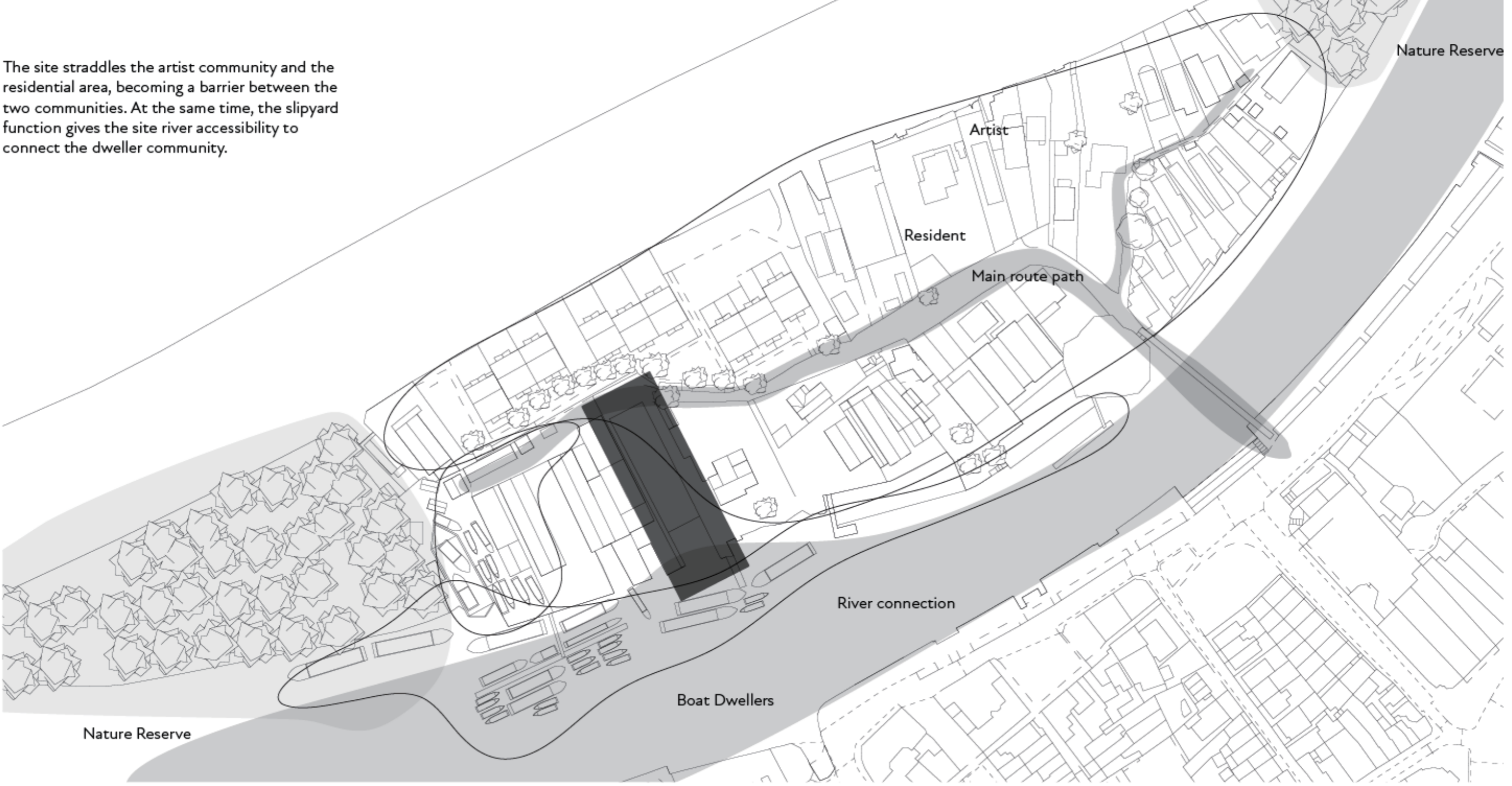


Introduction

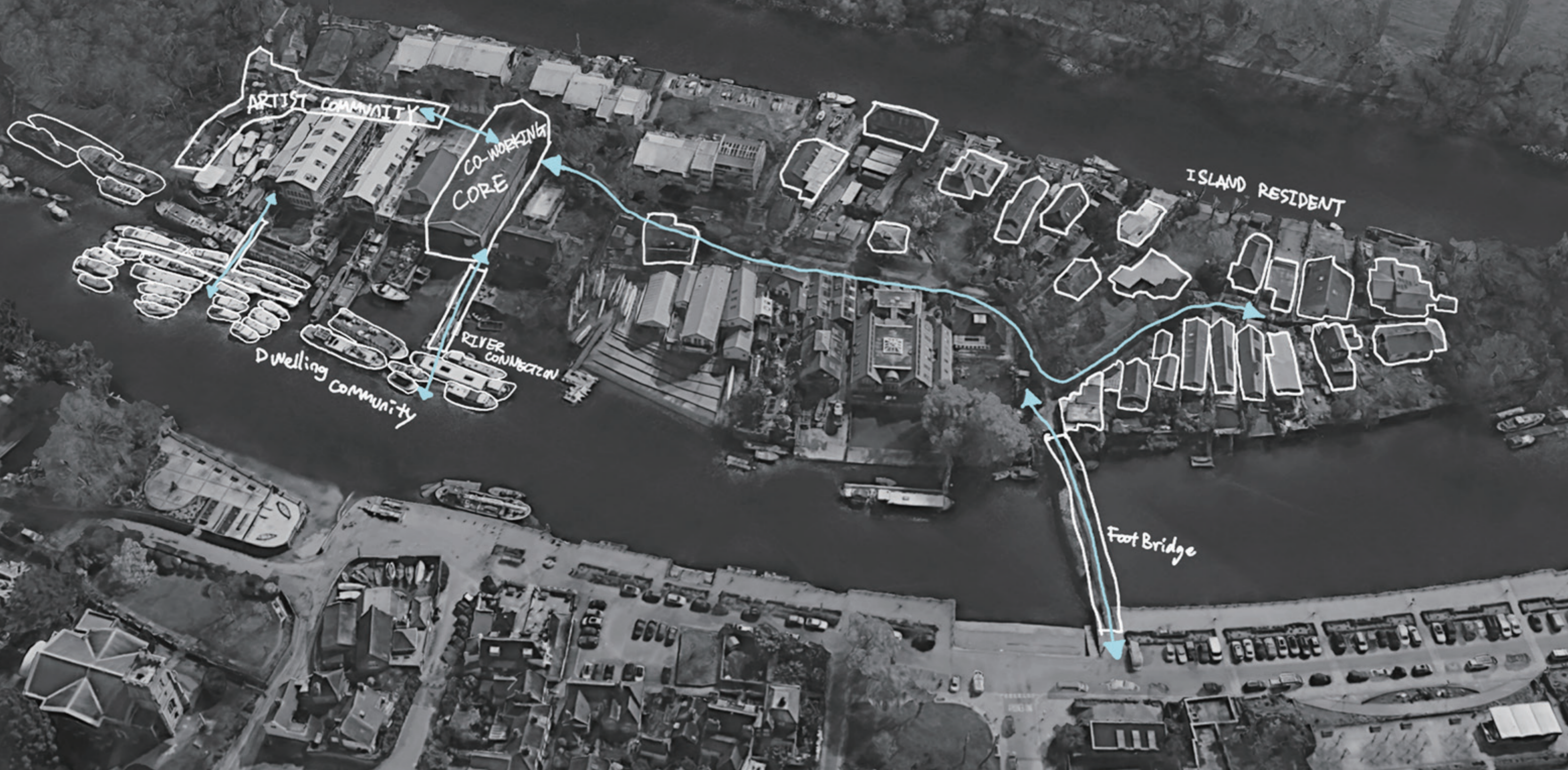
SITE PROTENTIAL



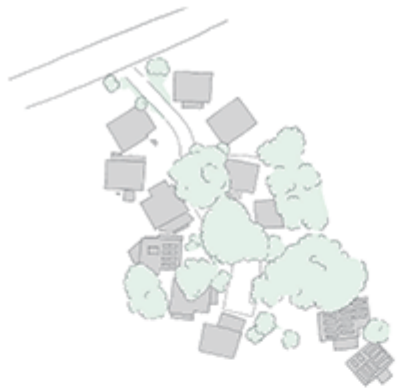
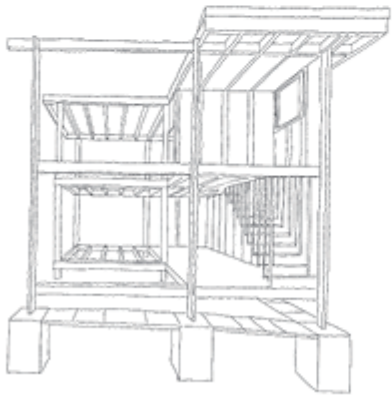
The site straddles the artist community and the residential area, becoming a barrier between the two communities. At the same time, the slipyard function gives the site river accessibility to connect the dweller community.



URBAN STRATEGY

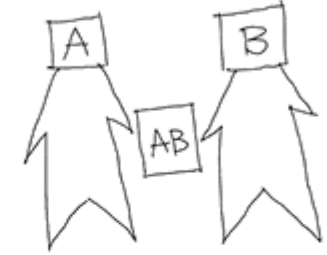


Segal Method Study



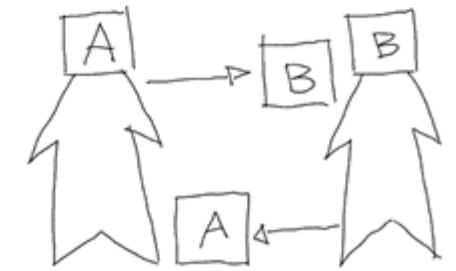
A self-built community with strong connections and self-management has been formed.

Detail research in journal Segal Method part



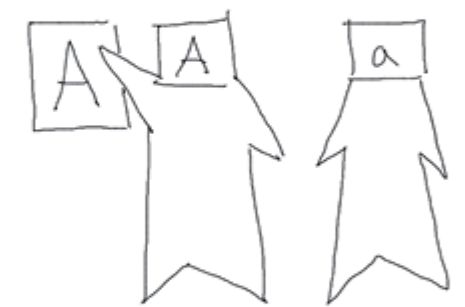
Work Together

Working together boosts efficiency by combining skills, solving problems faster, and fostering innovation through shared knowledge.



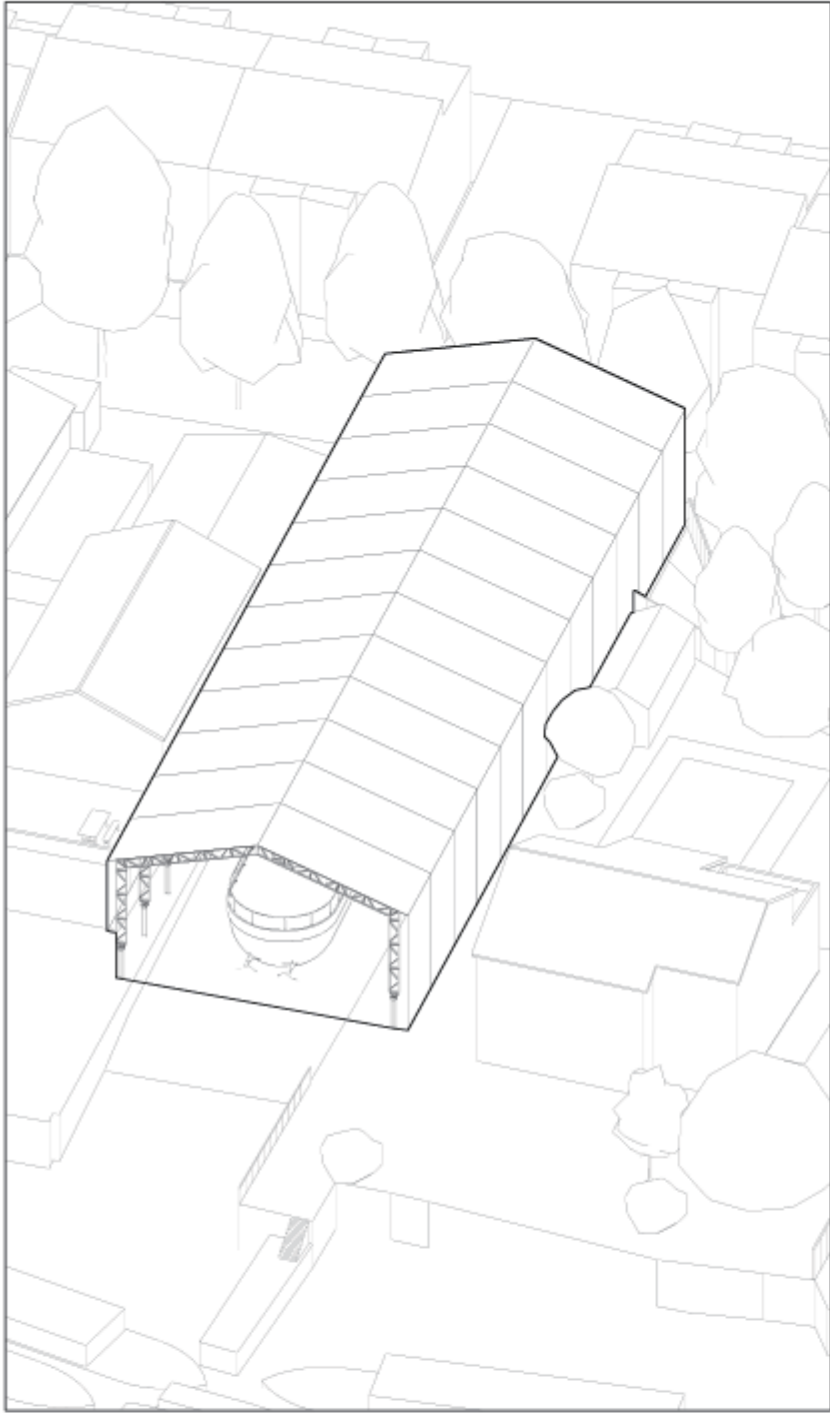
Switch Work

Switching work enhances efficiency by leveraging diverse skills, allowing tasks to be completed more effectively while fostering continuous learning and collaboration.

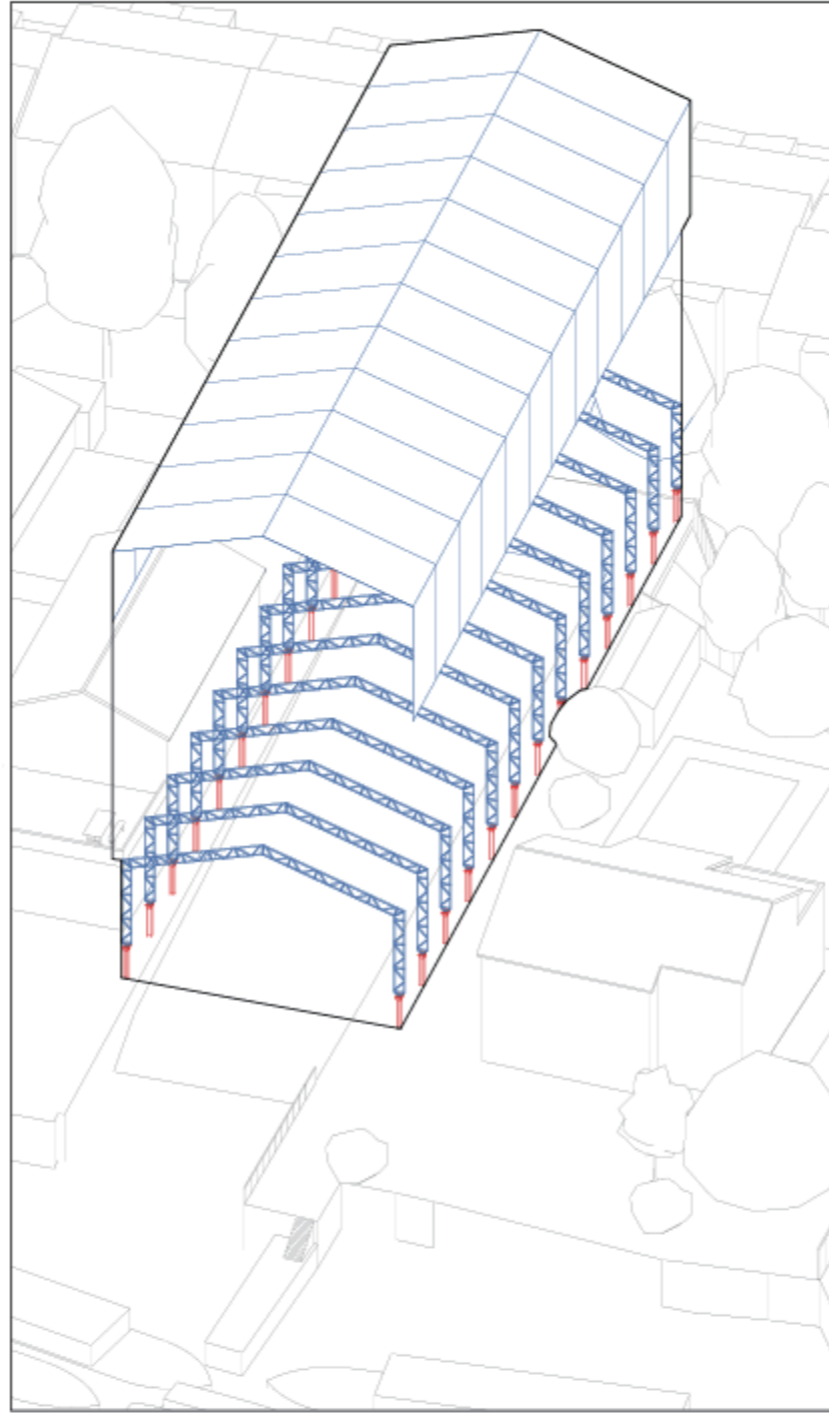


Teaching

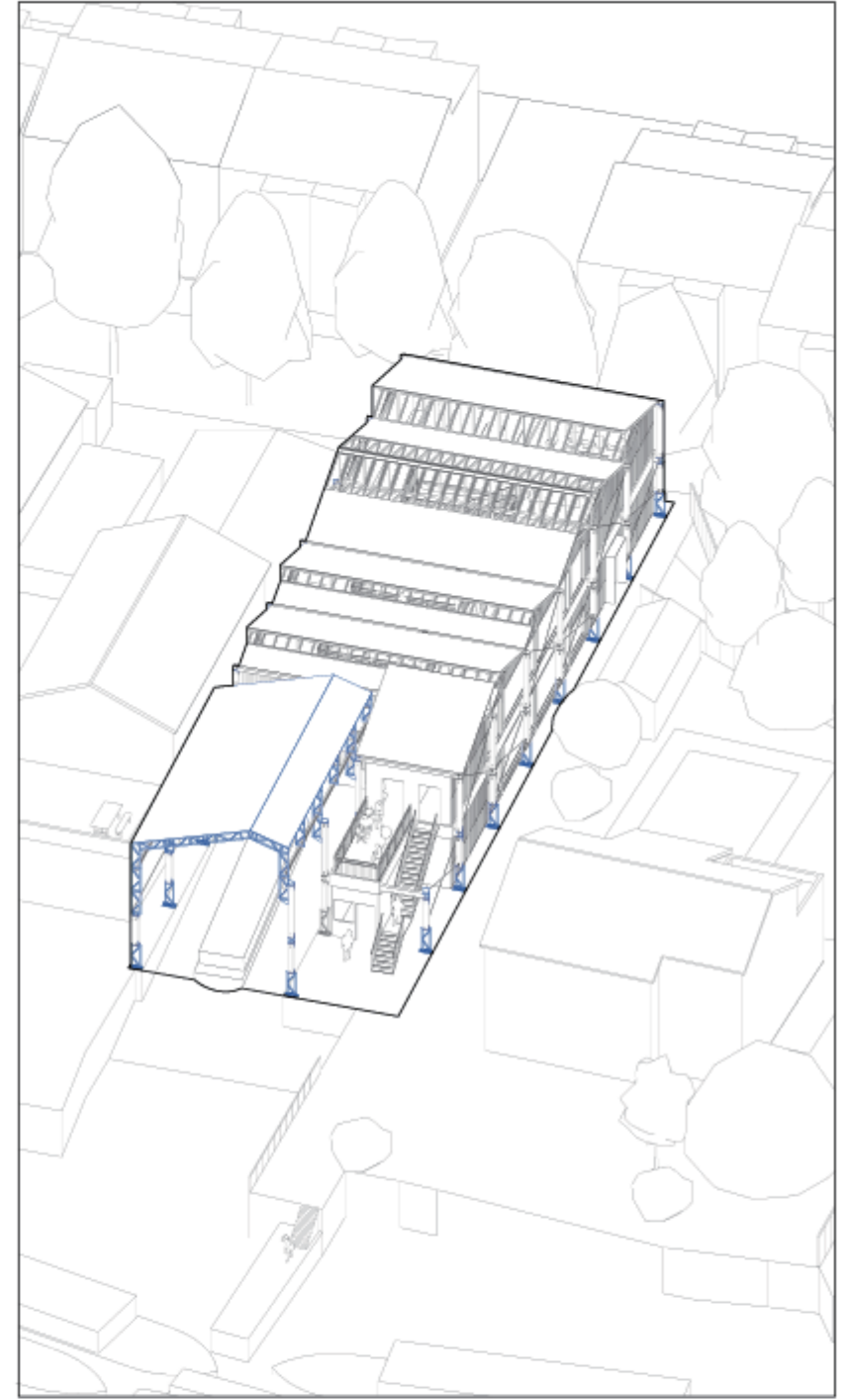
Teaching strengthens collaboration by sharing expertise, enhancing skills, and fostering a culture of continuous learning and innovation.



Original Shipyards warehouse

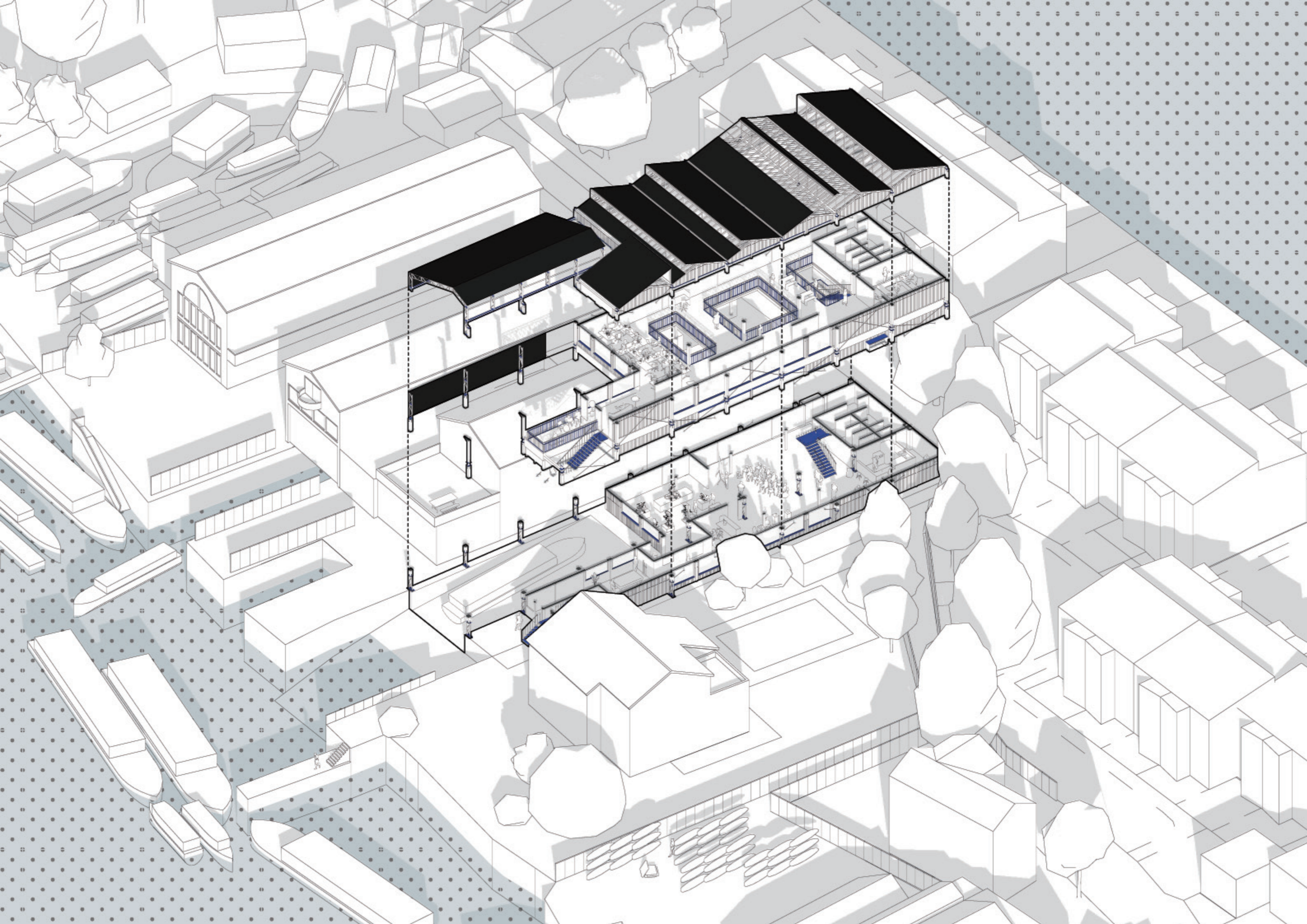


Reuse the warehouse steel roof panel and steel truss structure. Demolish the broken and rusted I steel part

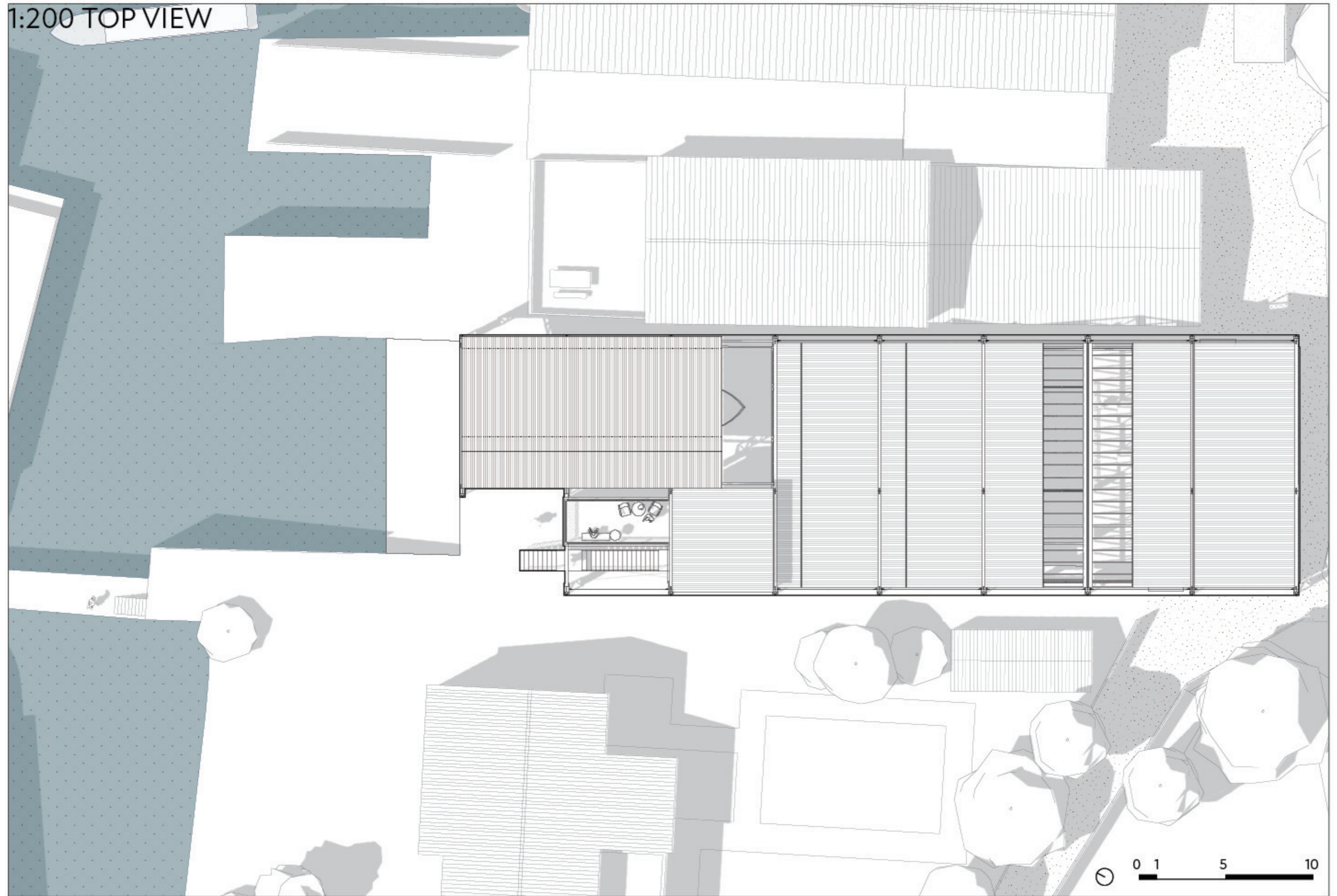


Skill Hub Zero design

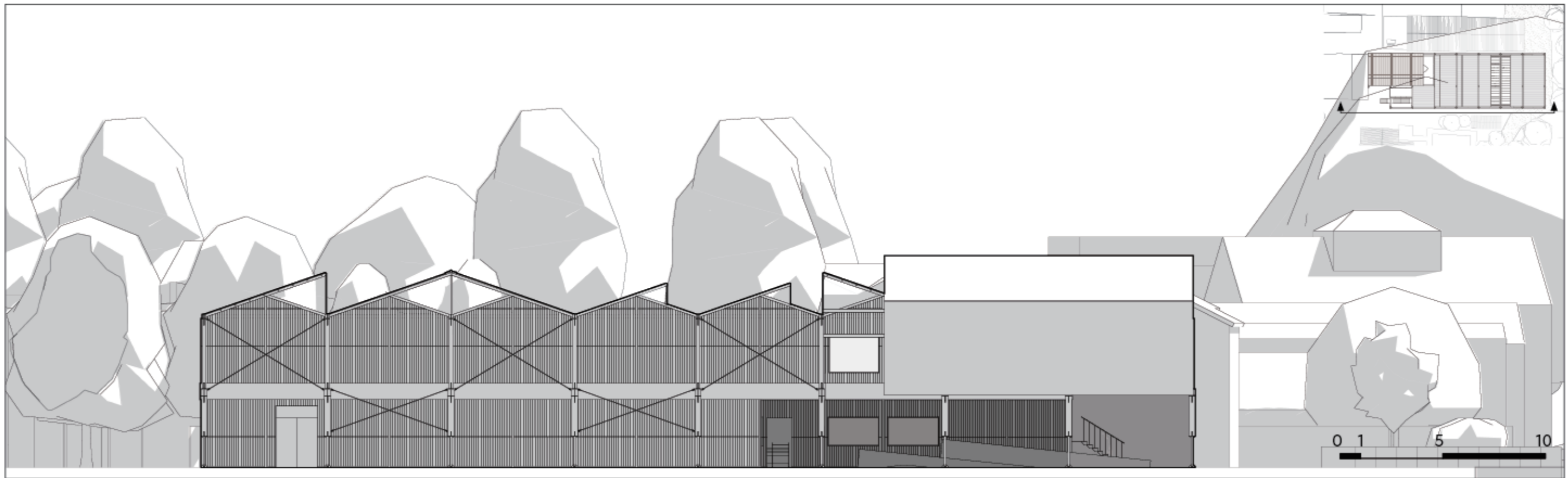
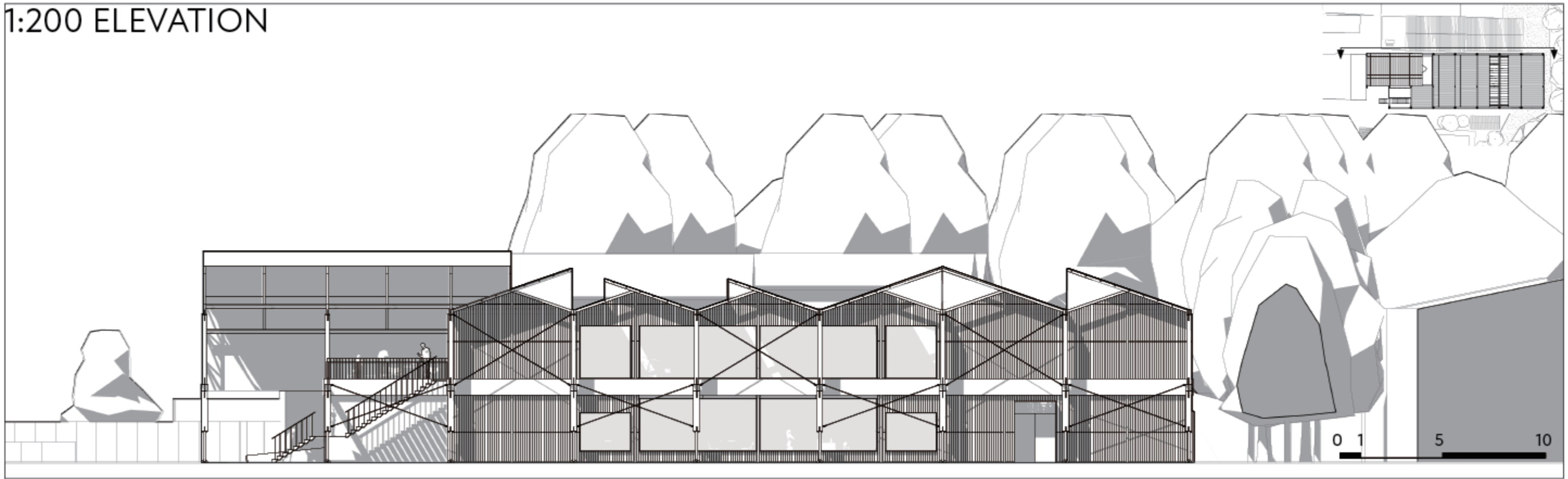
Proposal



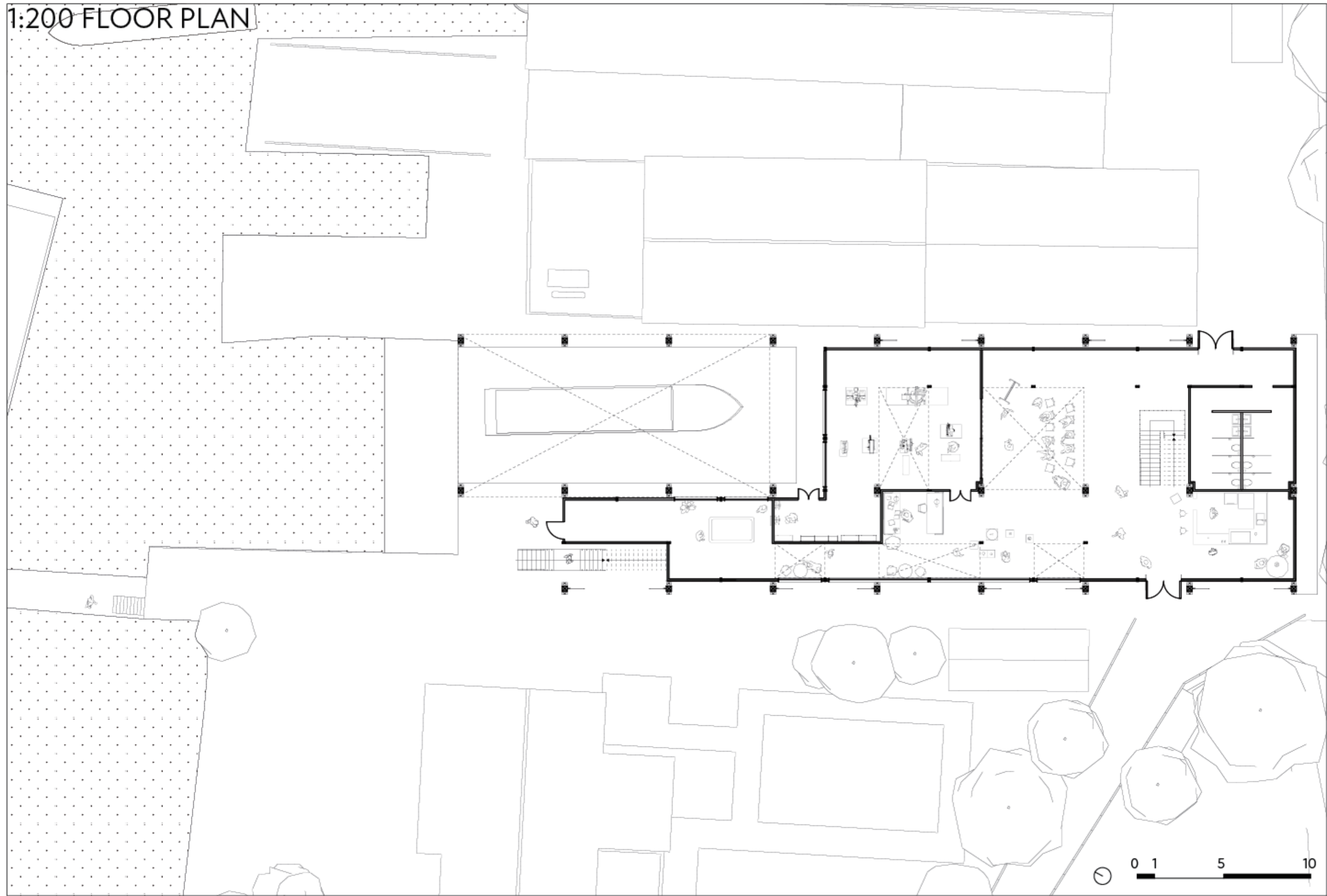
1:200 TOP VIEW



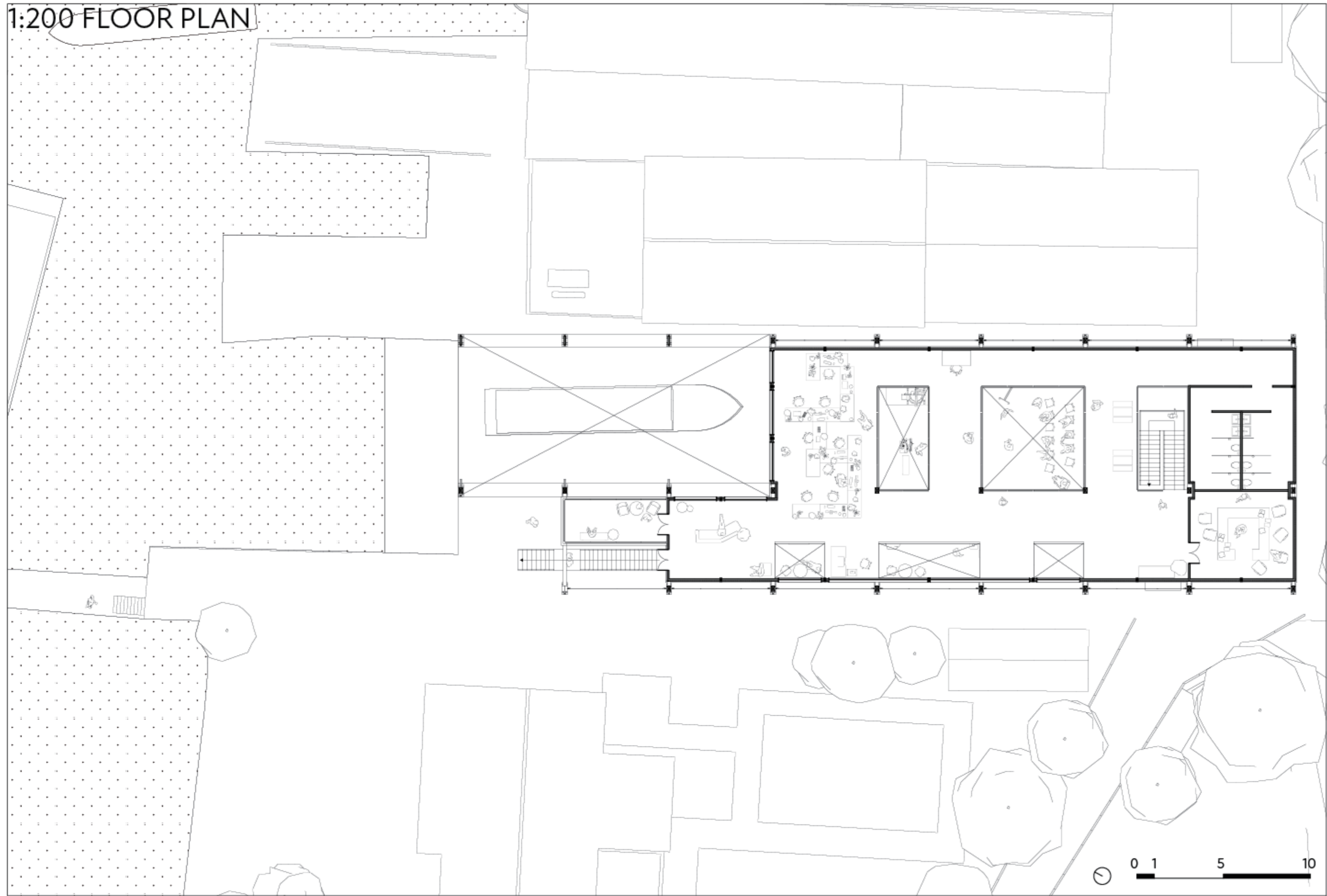
1:200 ELEVATION



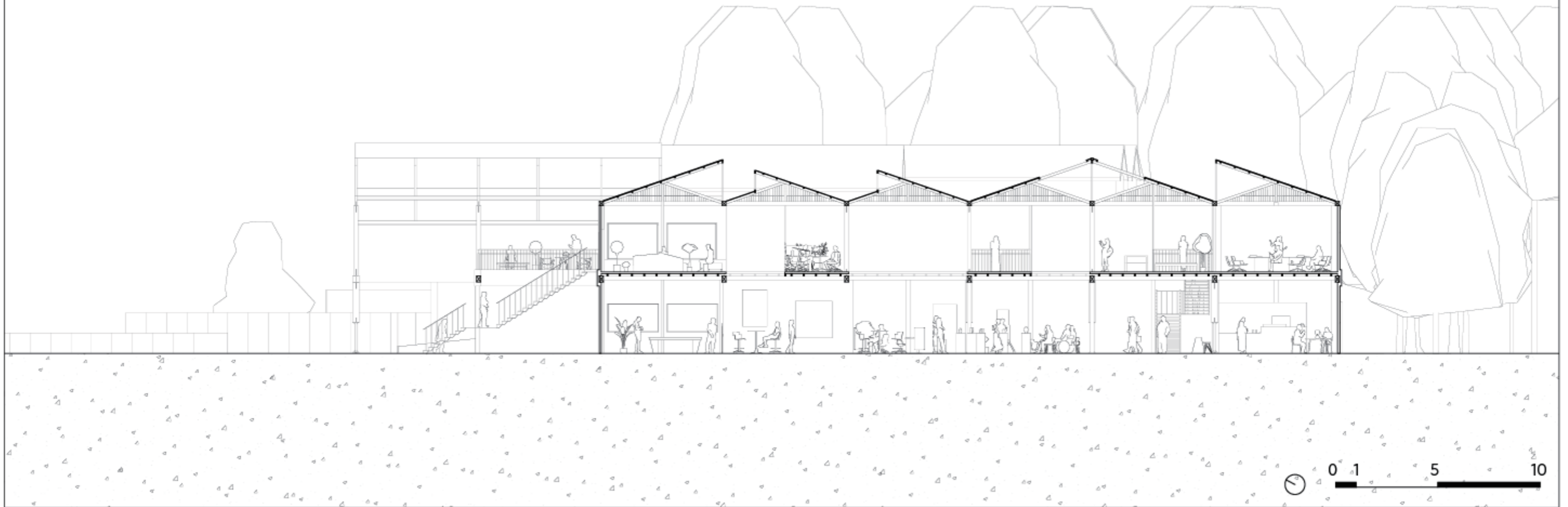
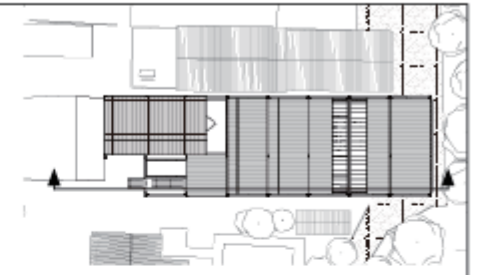
1:200 FLOOR PLAN



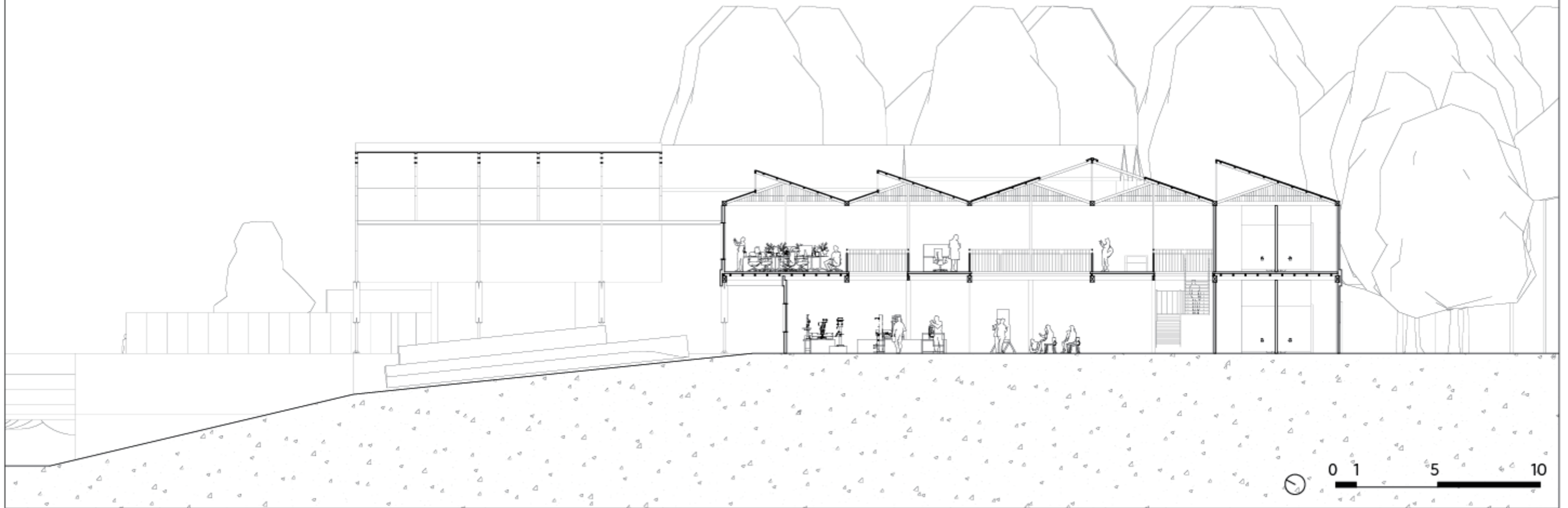
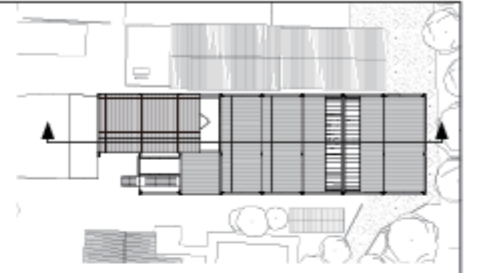
1:200 FLOOR PLAN

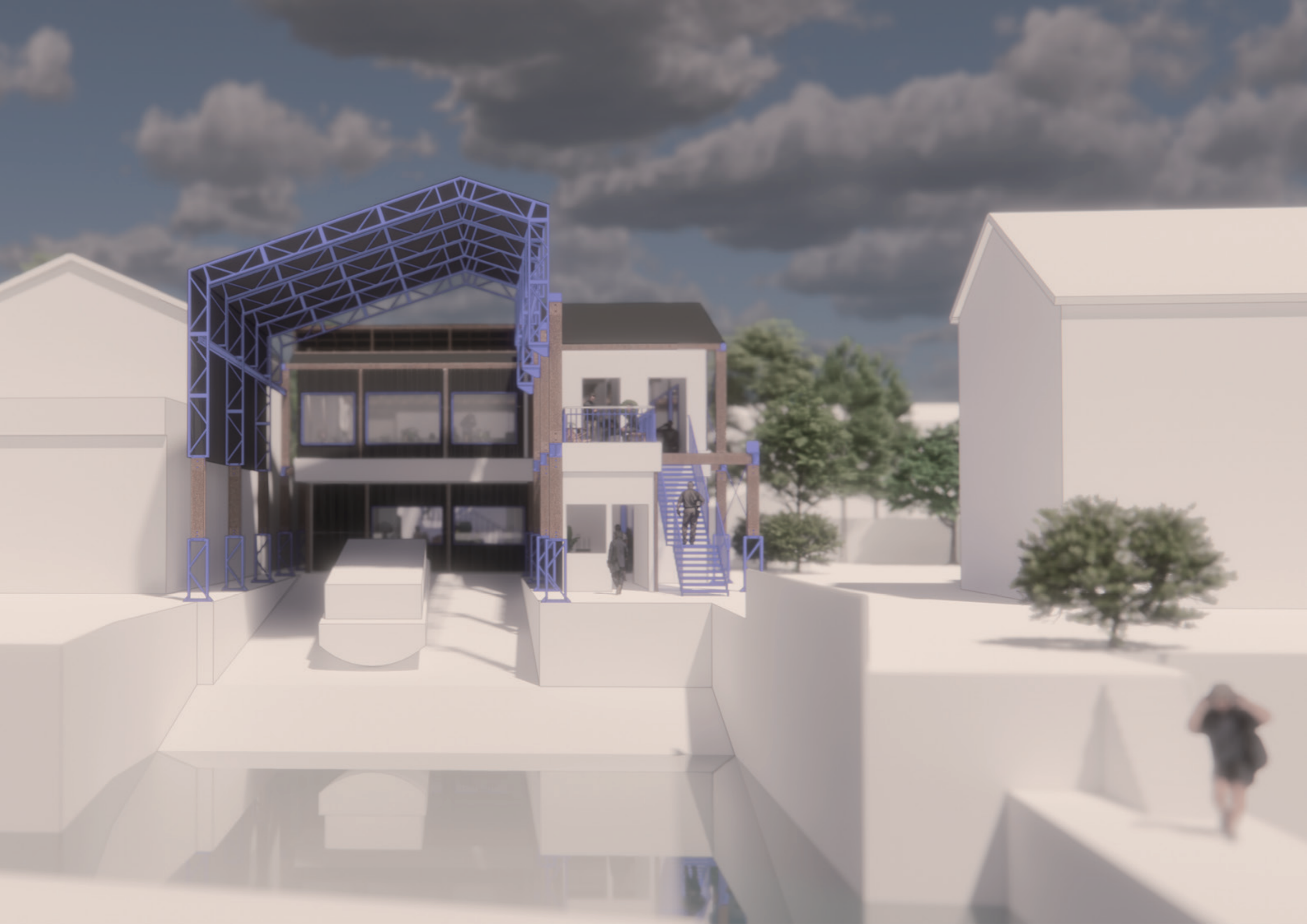


1:200 SECTION



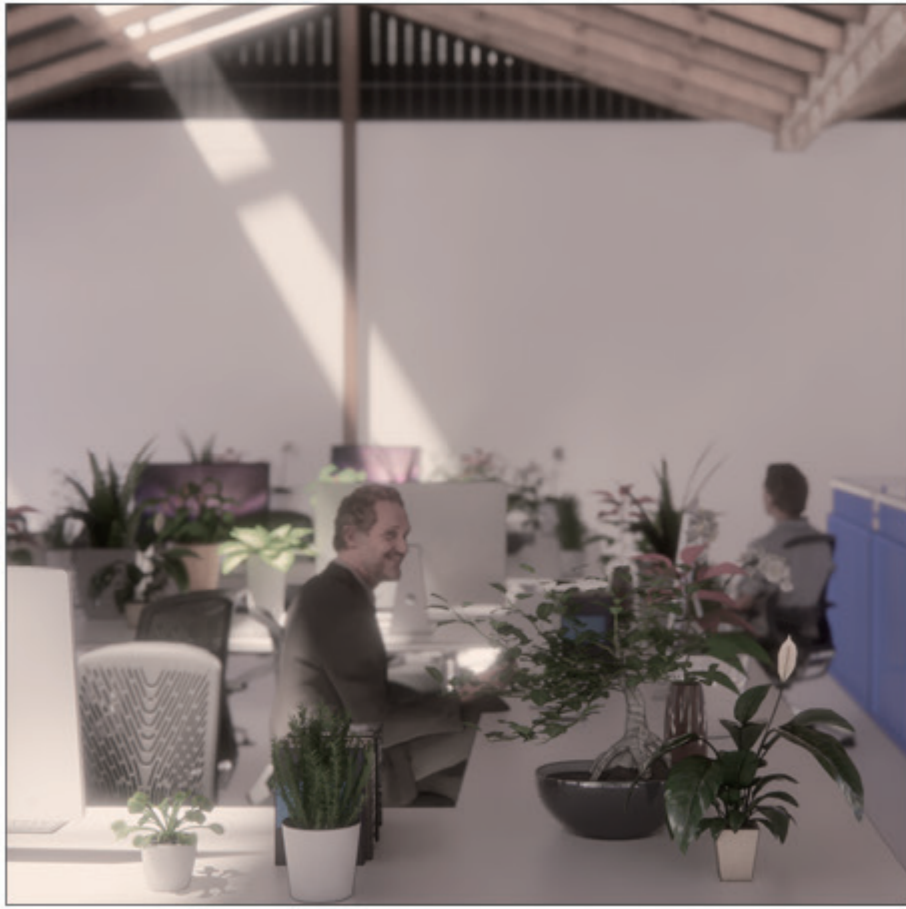
1:200 SECTION



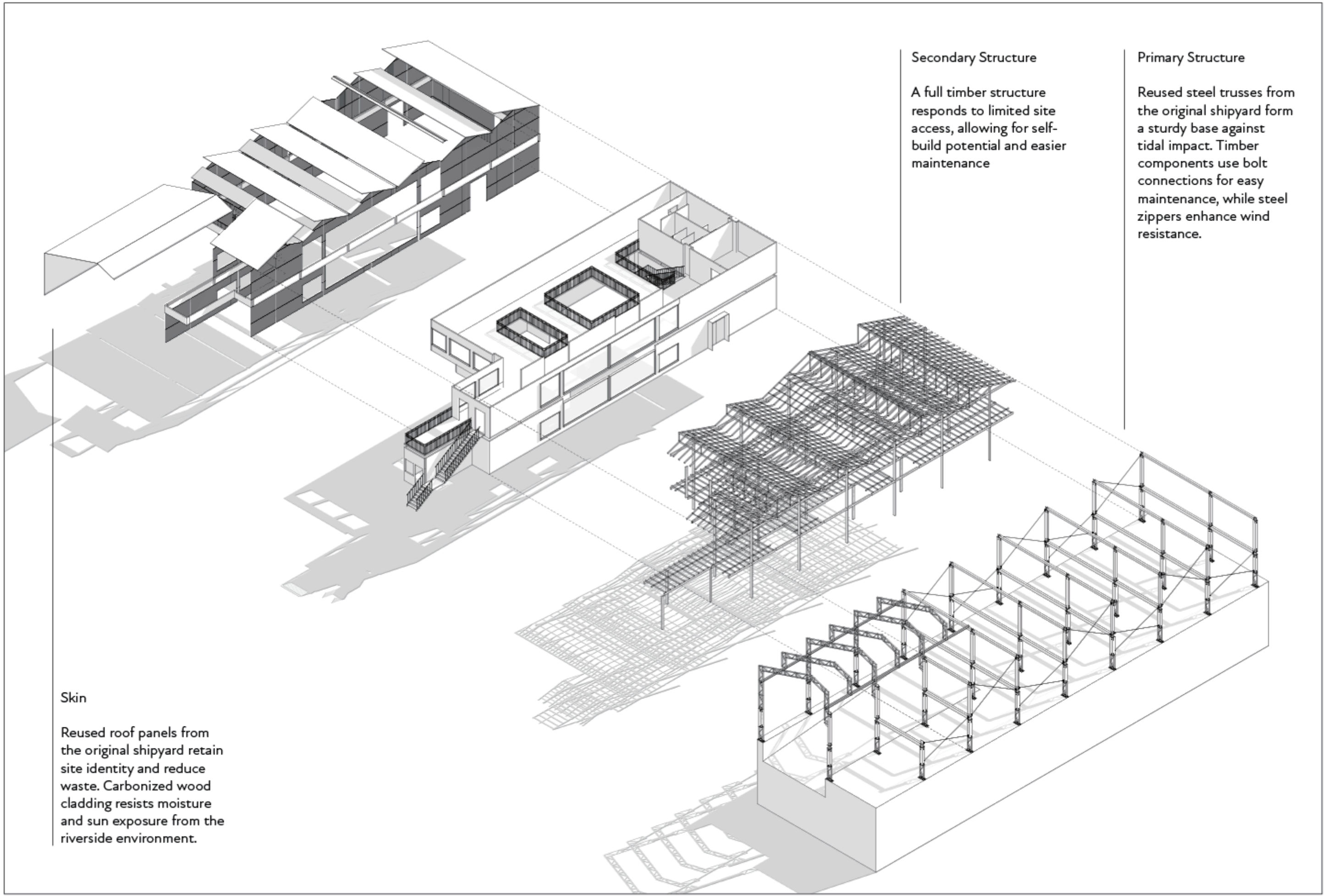








Detail



Secondary Structure

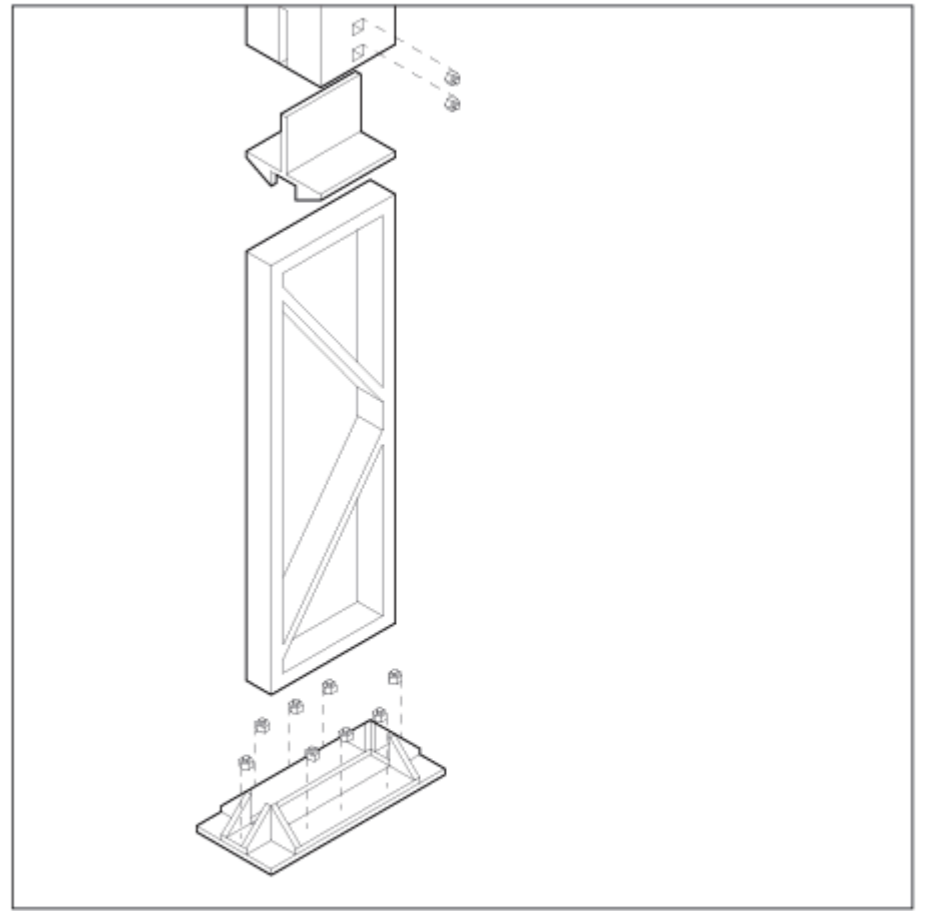
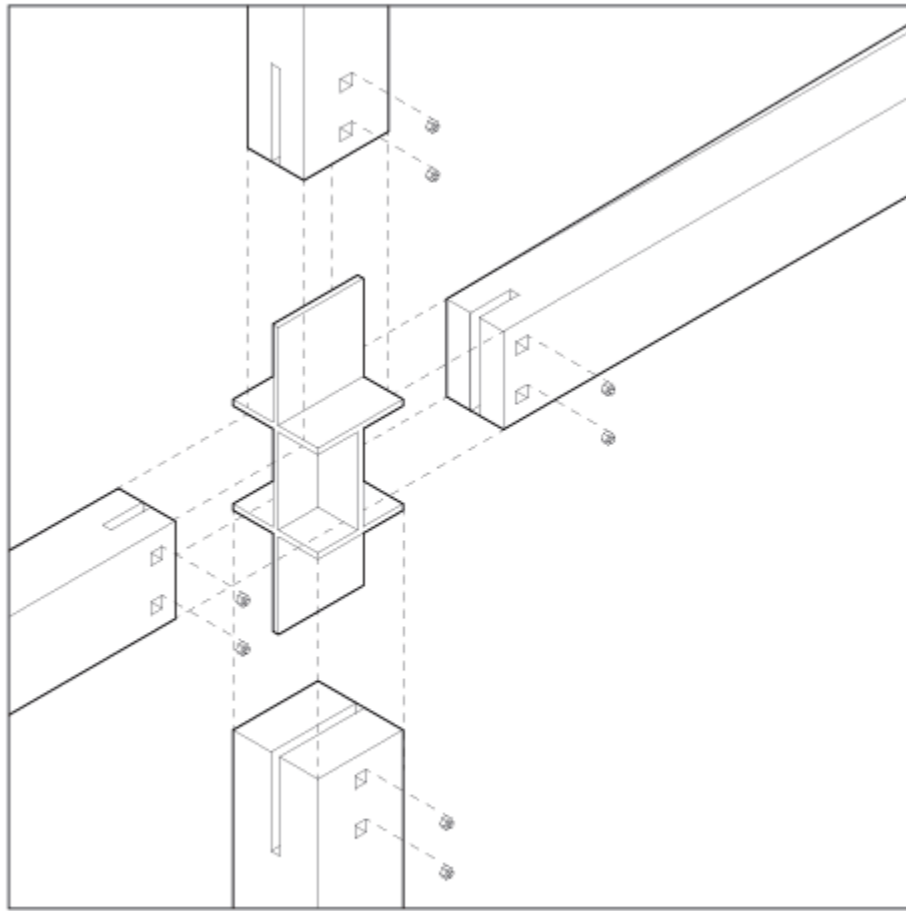
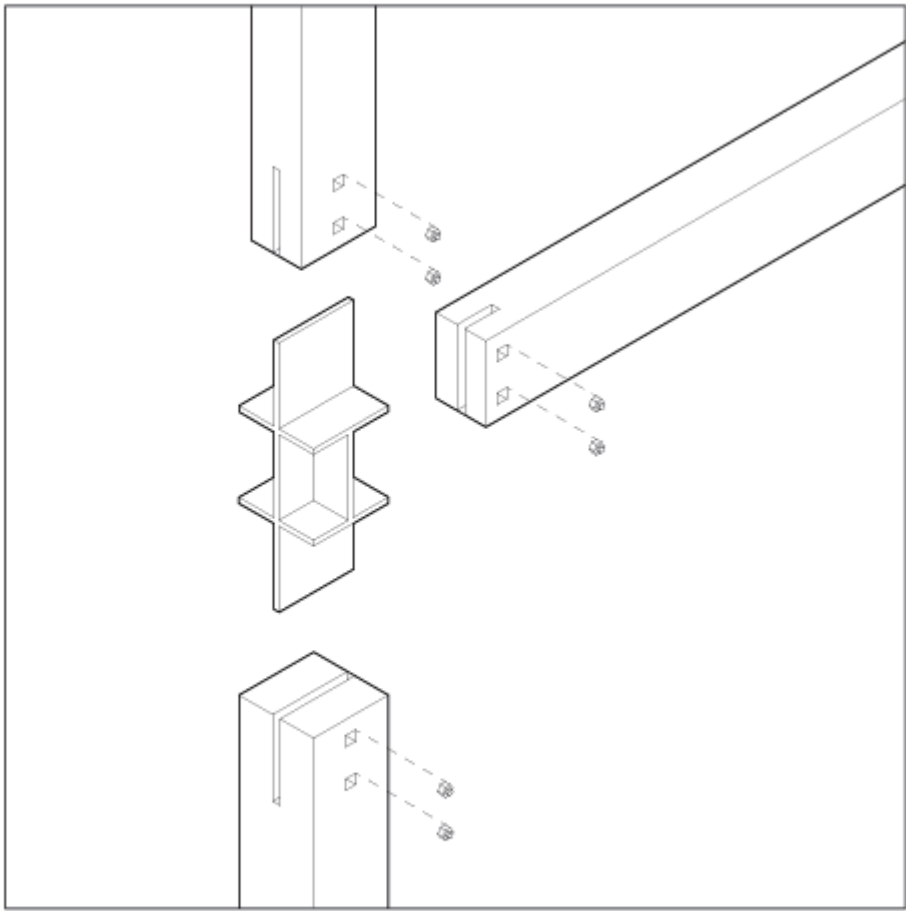
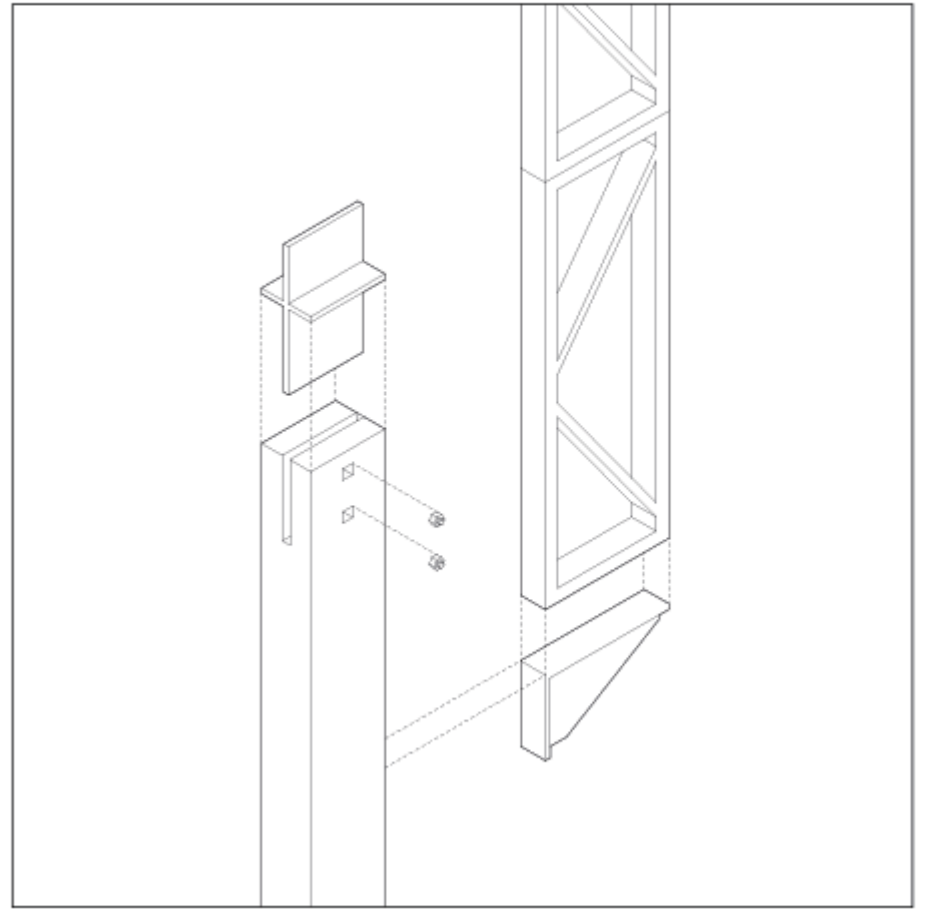
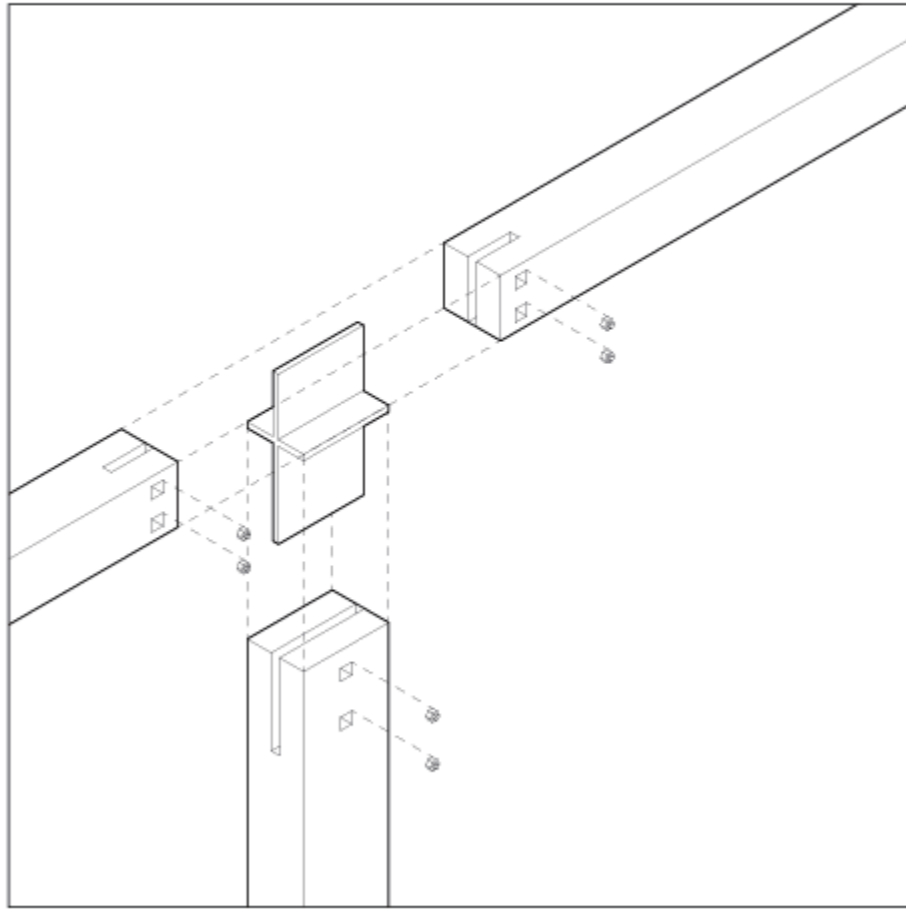
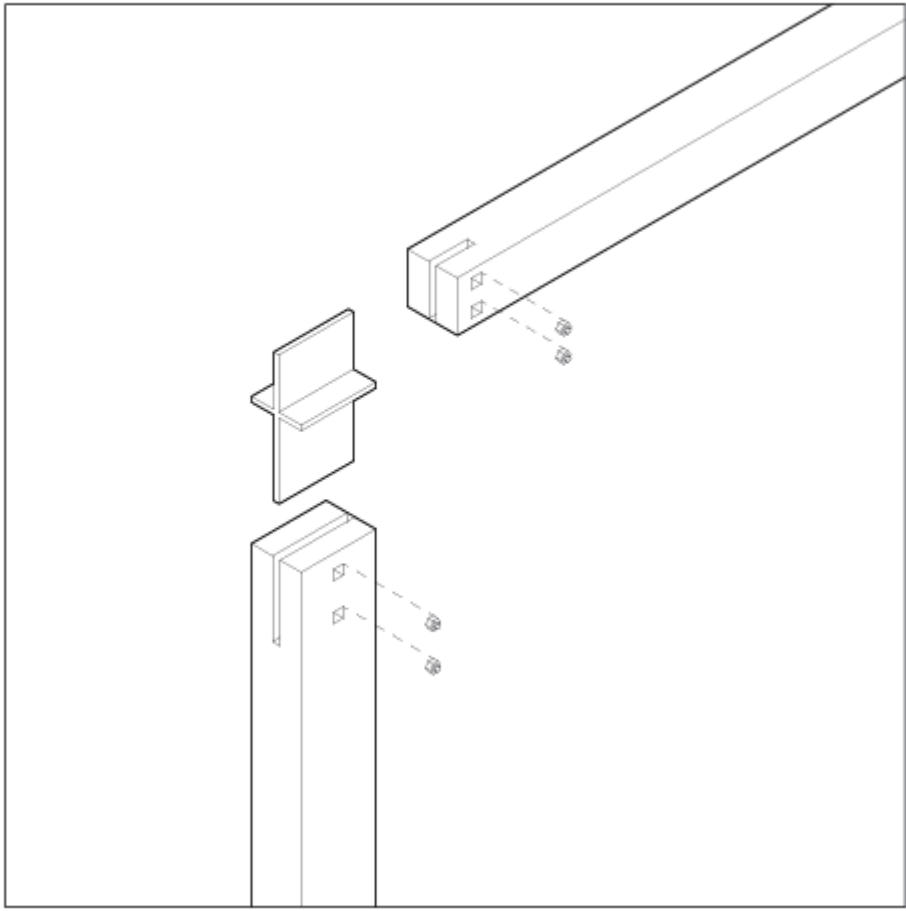
A full timber structure responds to limited site access, allowing for self-build potential and easier maintenance

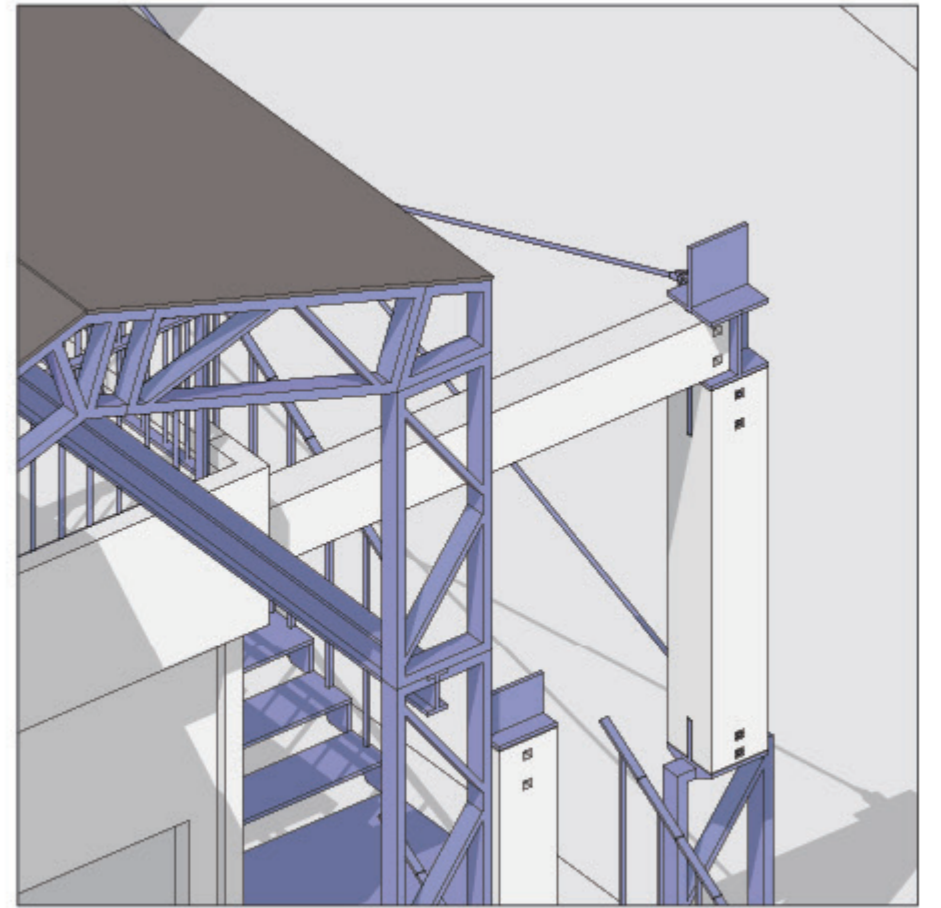
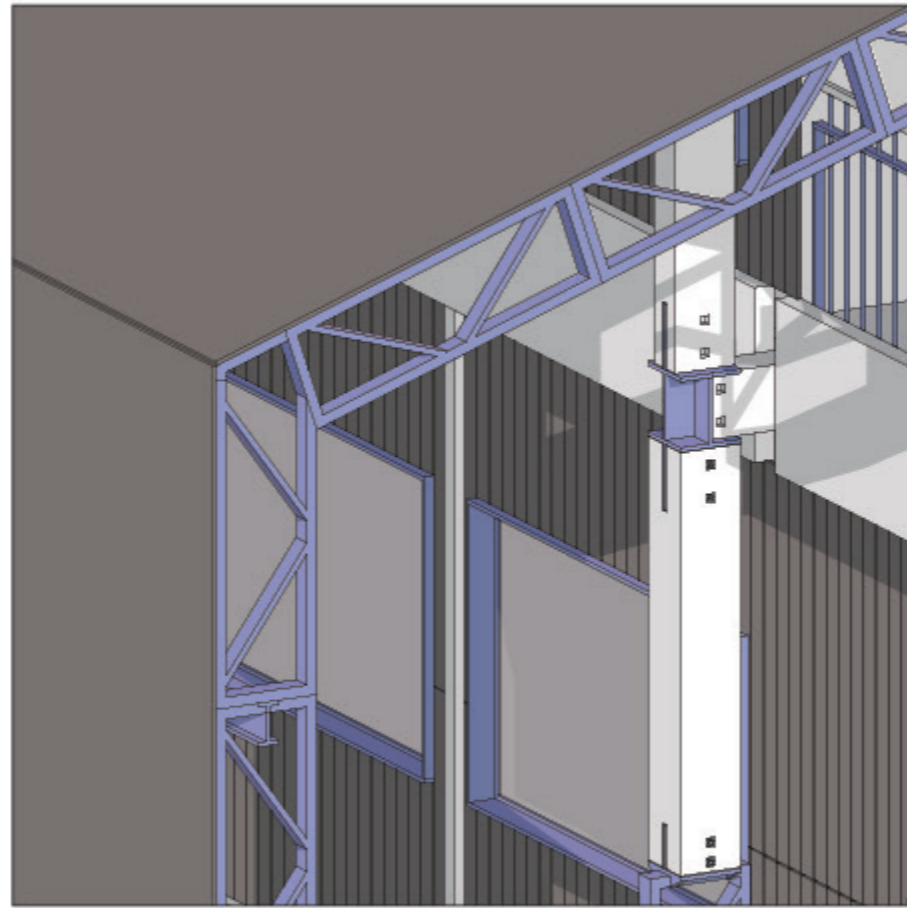
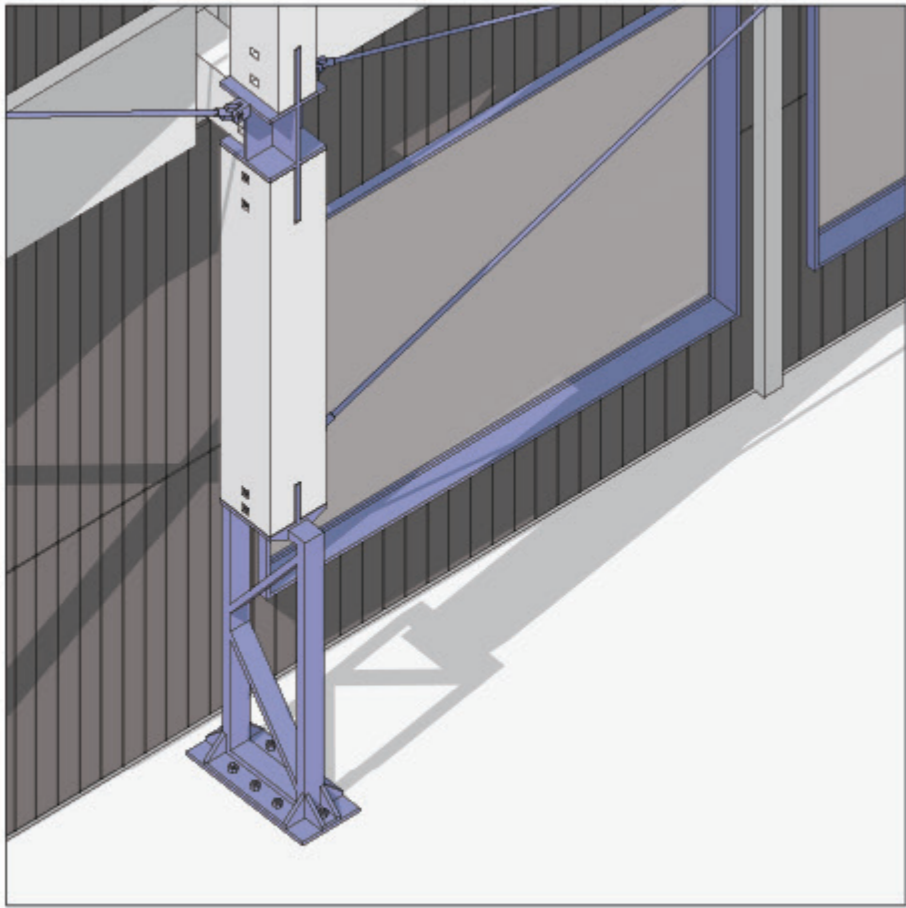
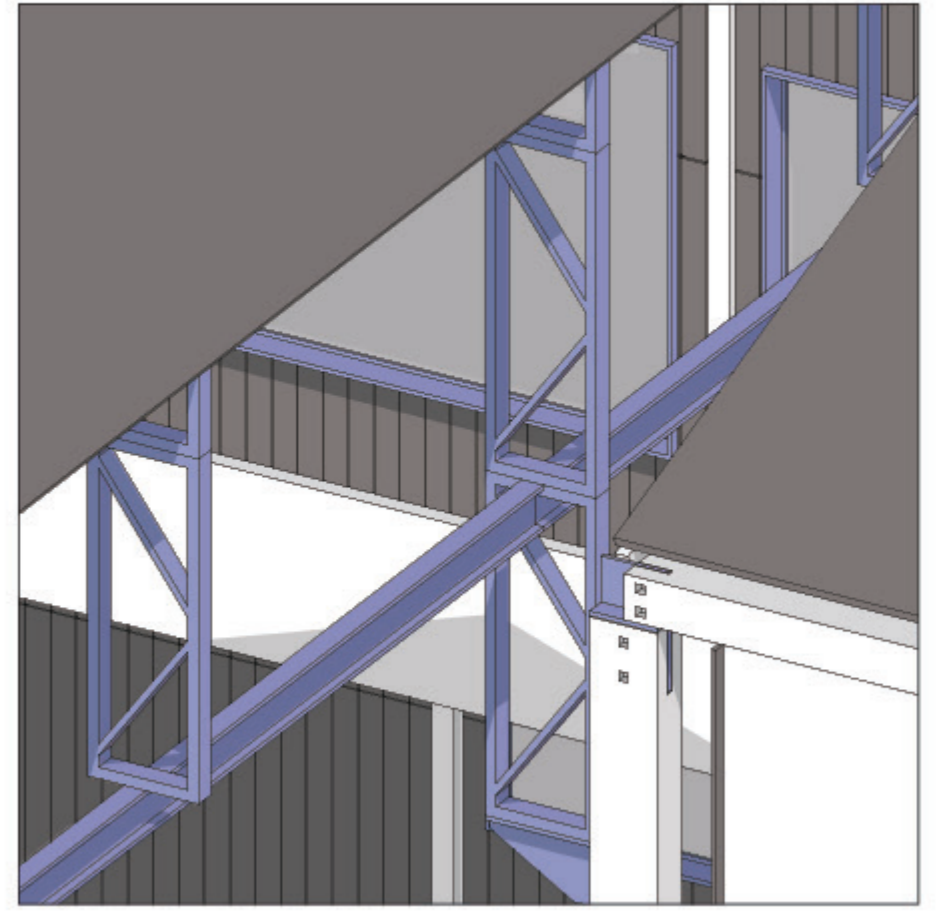
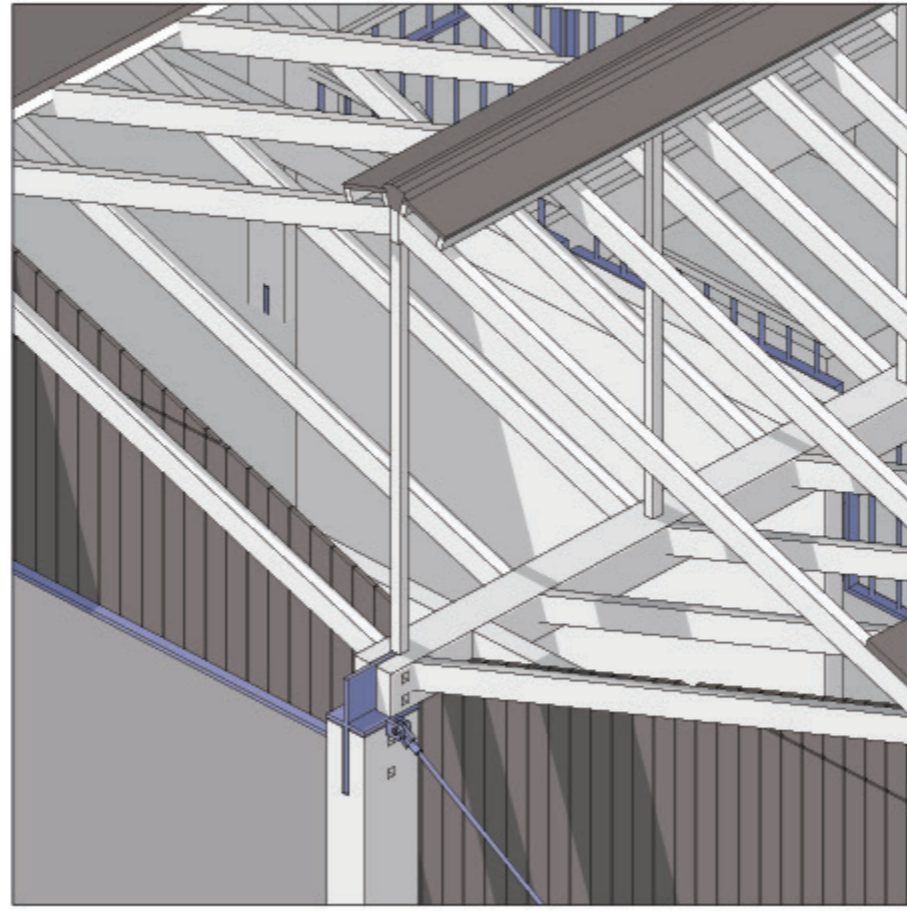
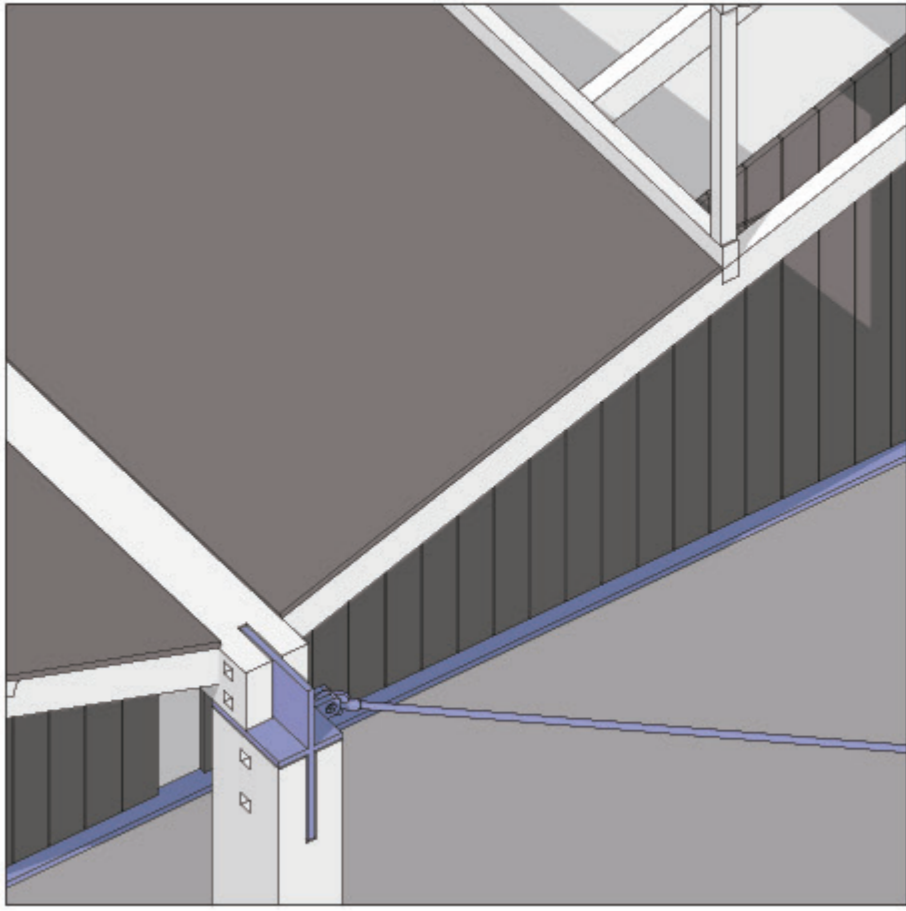
Primary Structure

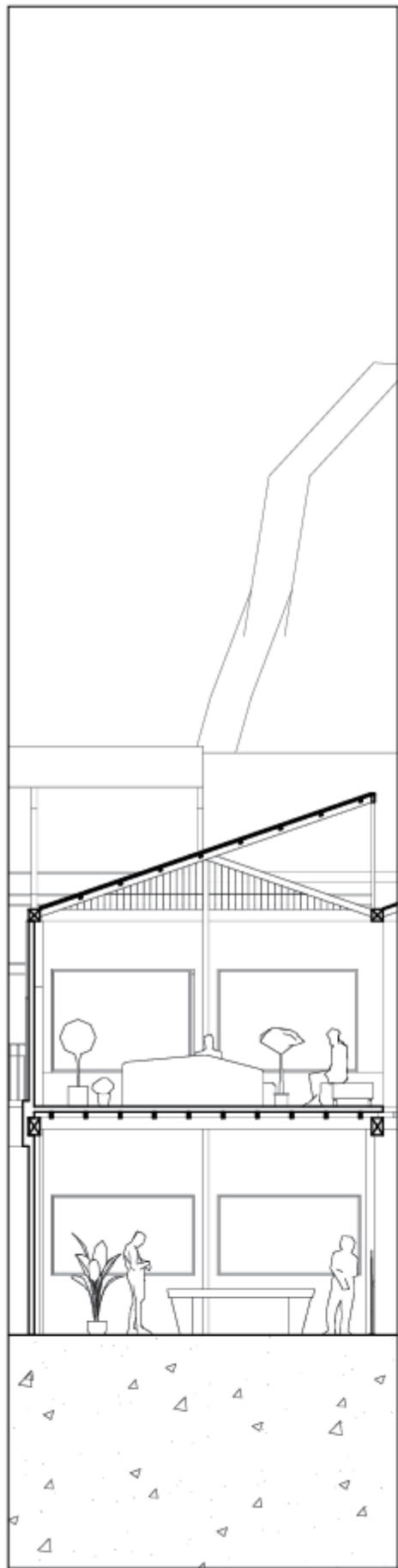
Reused steel trusses from the original shipyard form a sturdy base against tidal impact. Timber components use bolt connections for easy maintenance, while steel zippers enhance wind resistance.

Skin

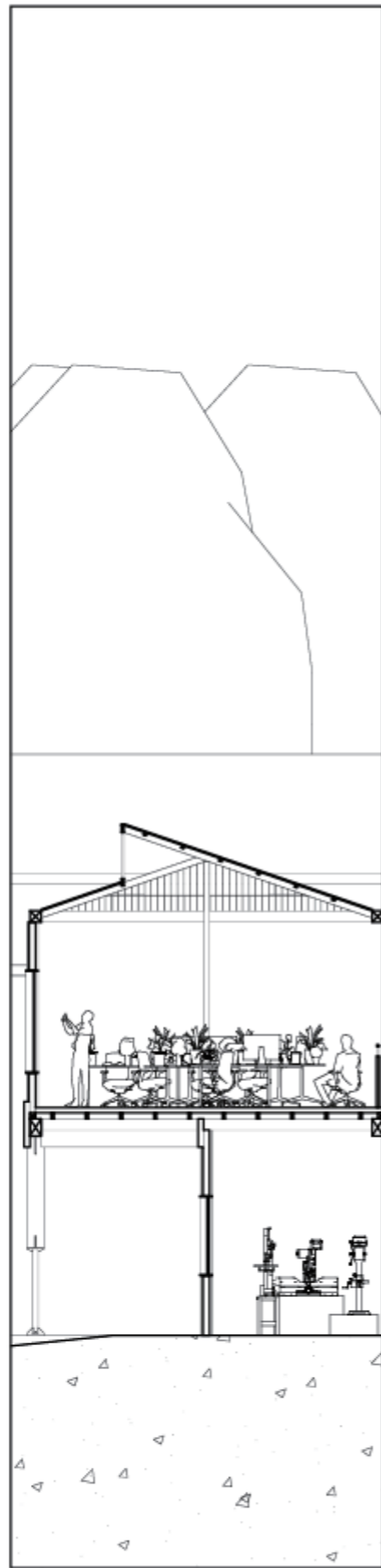
Reused roof panels from the original shipyard retain site identity and reduce waste. Carbonized wood cladding resists moisture and sun exposure from the riverside environment.



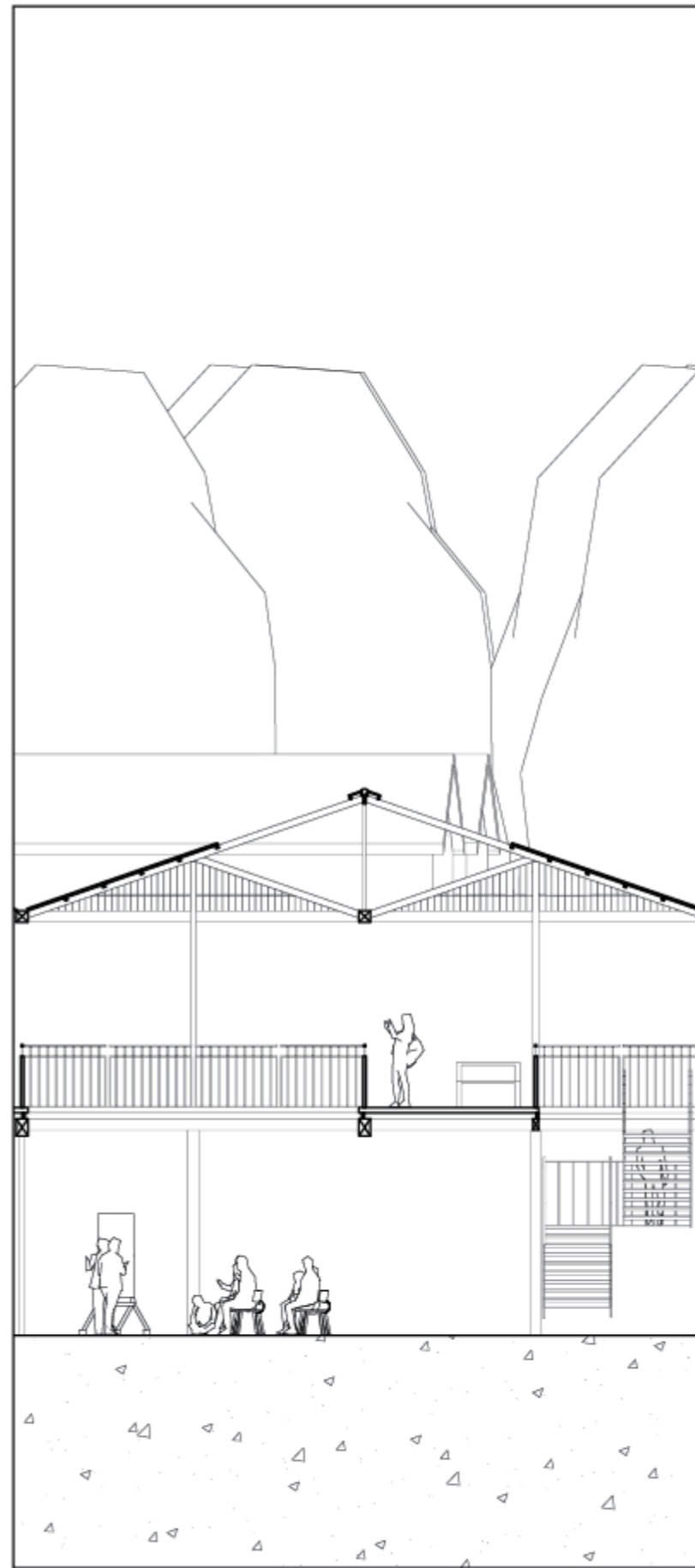




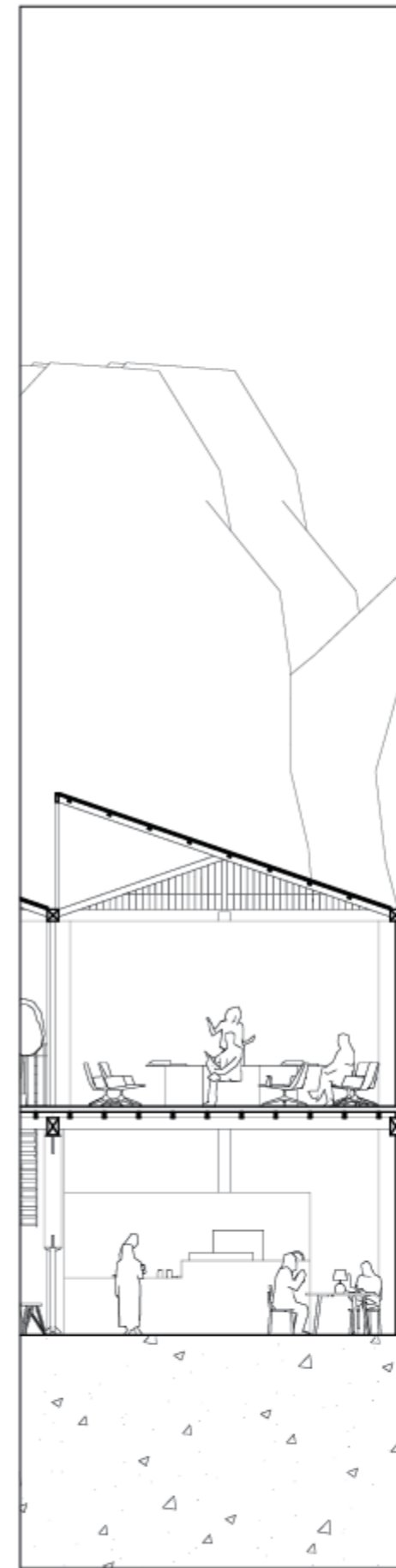
South light leisure space



North light co-working space



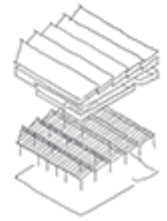
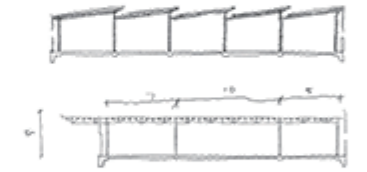
Open roof light main event space



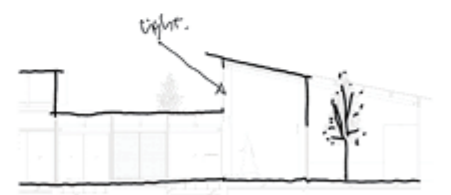
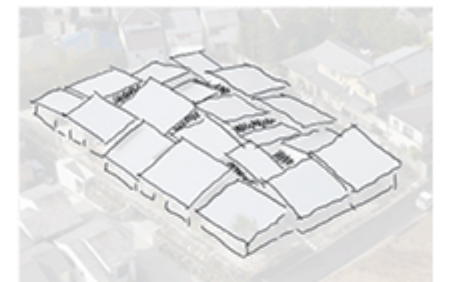
North light meeting room

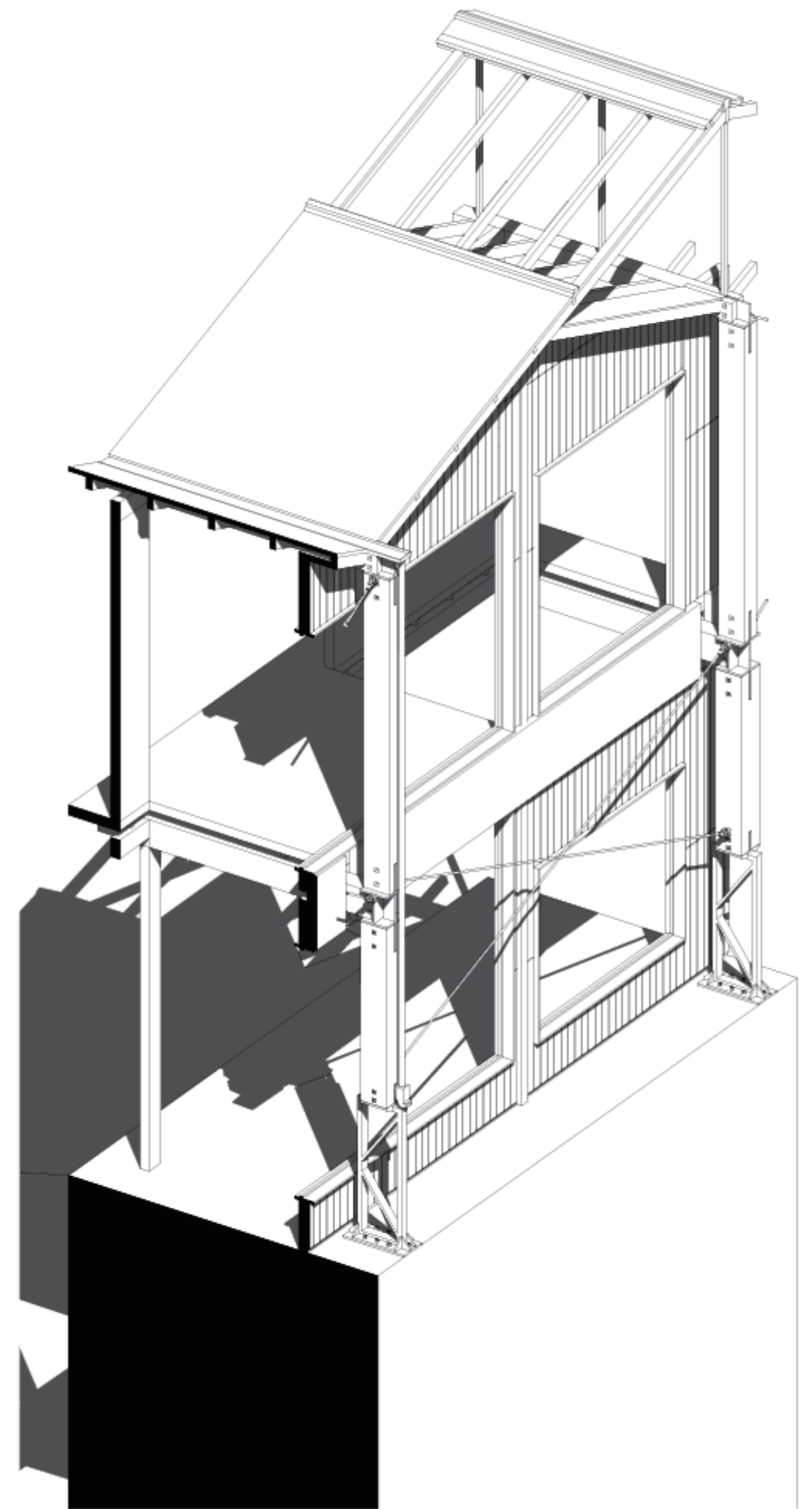
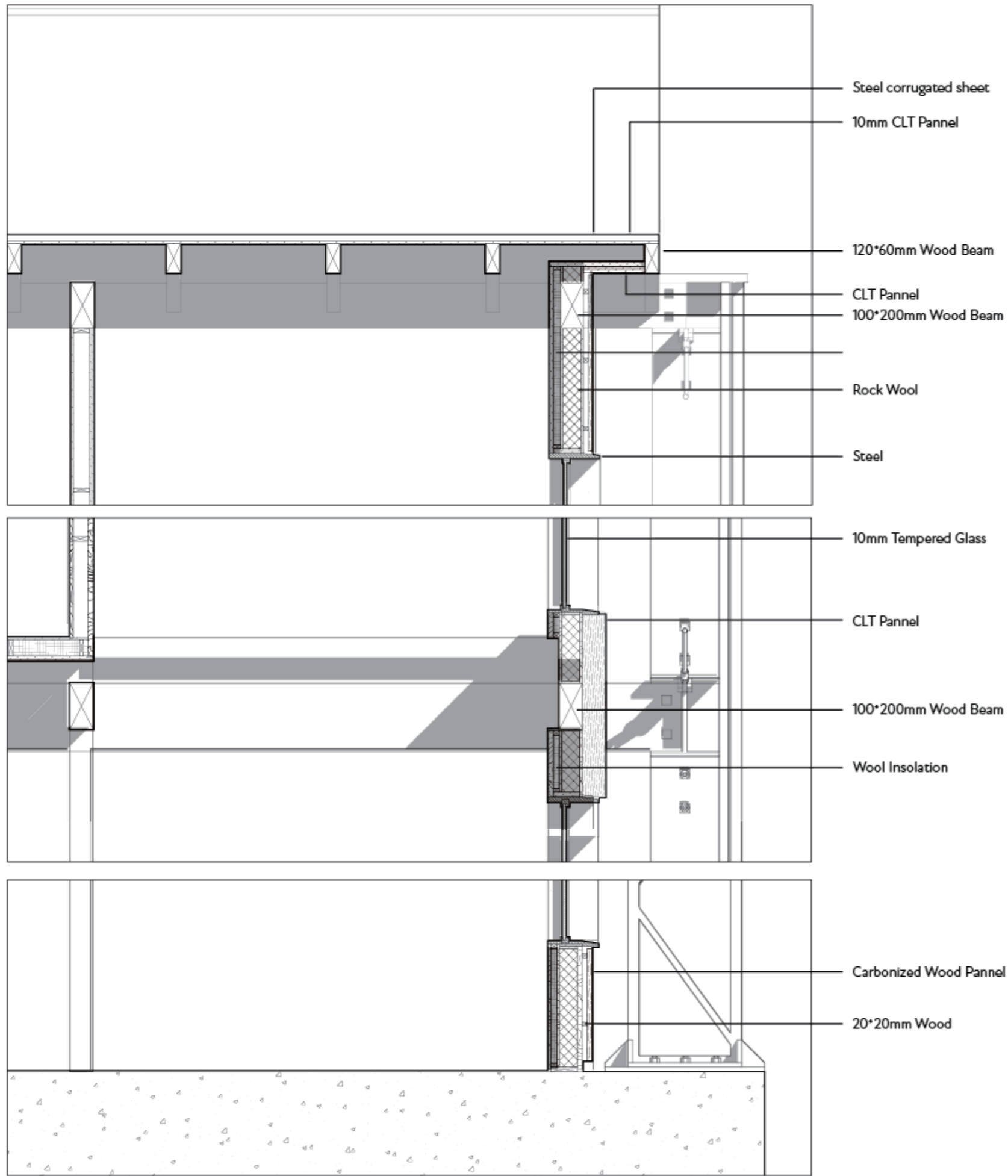
Case Study

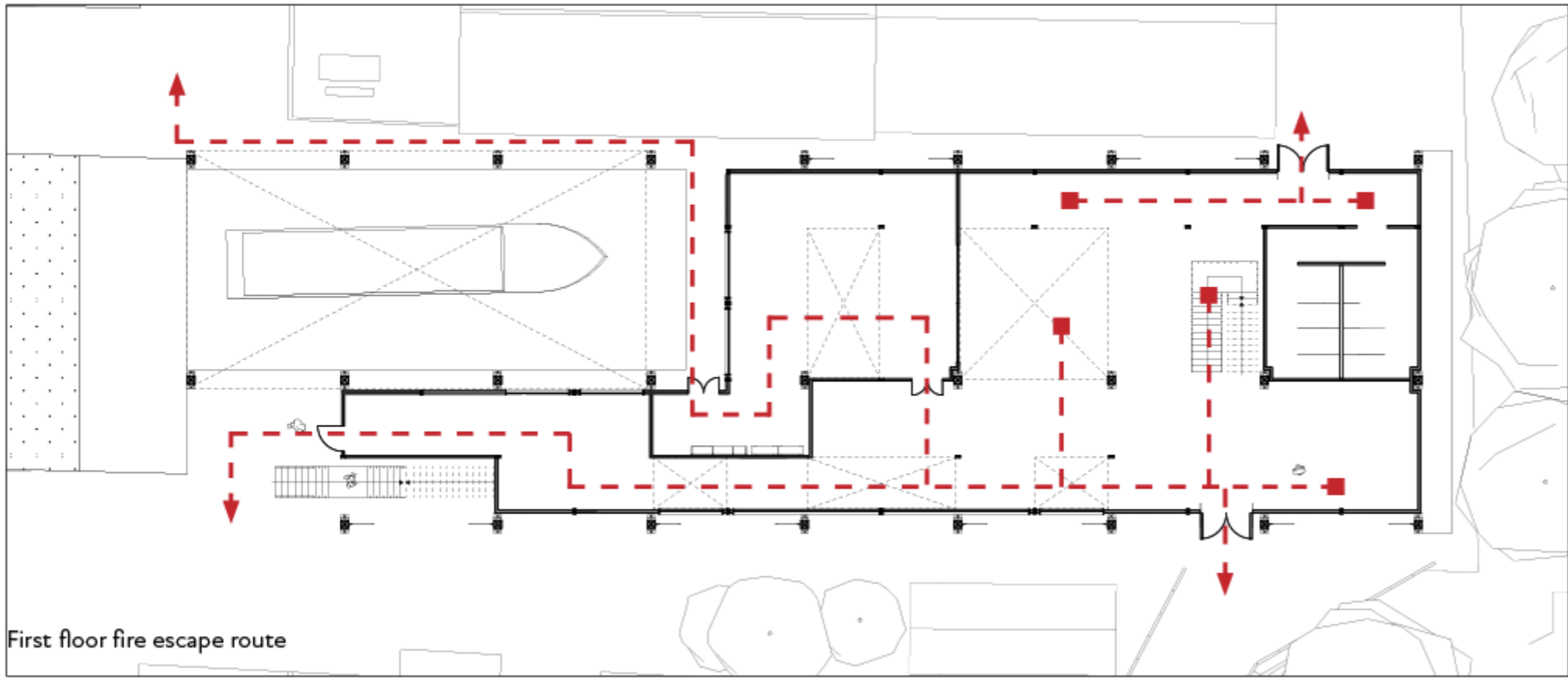
Penitentiary Warehouse



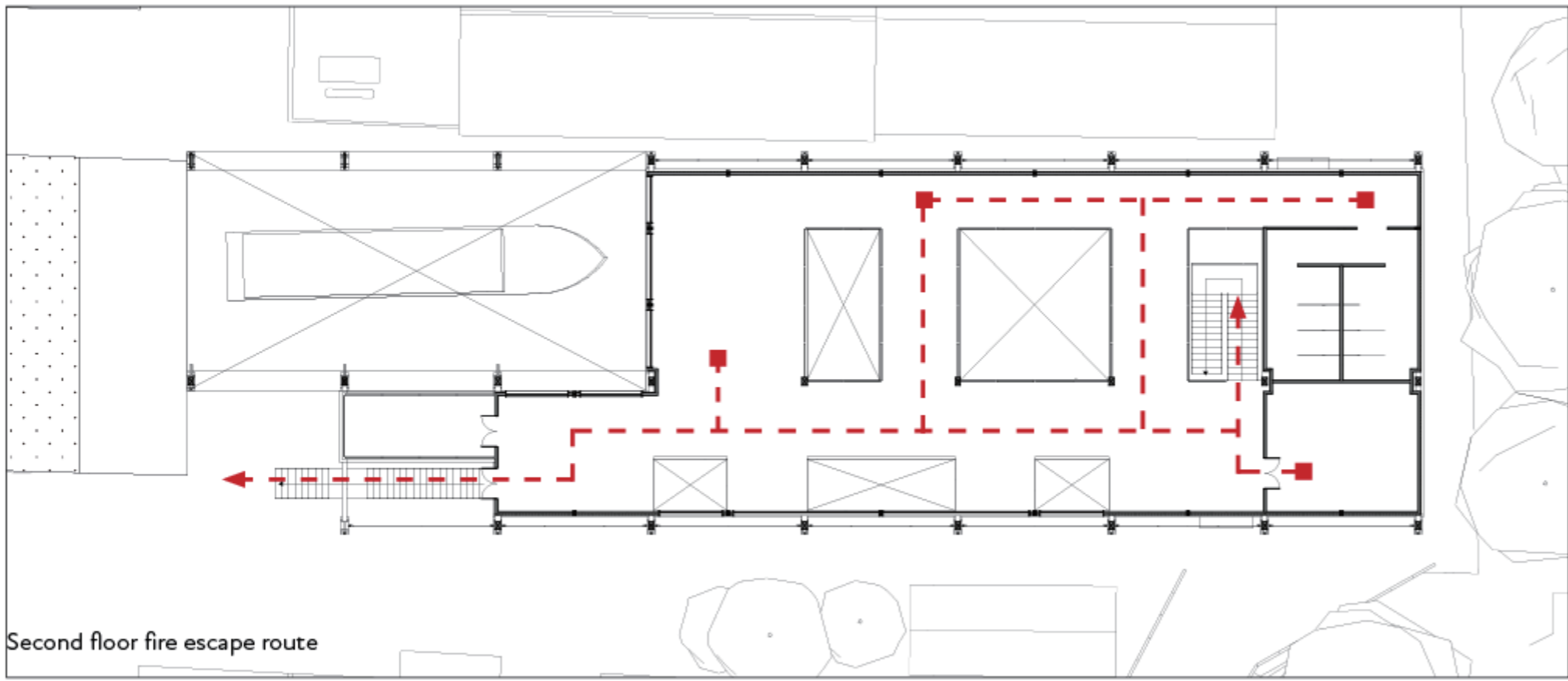
Nishinoyama House







First floor fire escape route



Second floor fire escape route