



JINGWEN WANG



Profile

COLLECTION CONCEPT

"A story that begins with me."

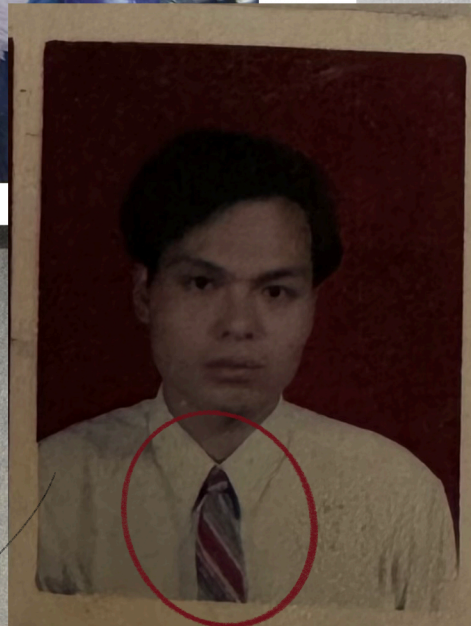
This collection is a personal reflection—a journey back to my childhood memories, where old photographs become the starting point and garments become the final form.

Drawing inspiration from the clothes I once wore, the imagined pieces I longed for, and even elements from weddings, the collection captures the emotional threads of growing up, ritual, and nostalgia.

It's not about recreating the past in a retro sense, but about transforming memory into something living and wearable.

This project is an intimate archive—told not with words, but through fabric, silhouette, and emotion.





My father wear
suit with a tie

Research

The tailoring suit combine the wedding dress and lace

the suit | the wedding dress

Mixed / Combined



During the initial research into wedding dresses, I found significant inspiration in the extensive use of lace, which conveys delicacy and a sense of ceremony.

Sleeve

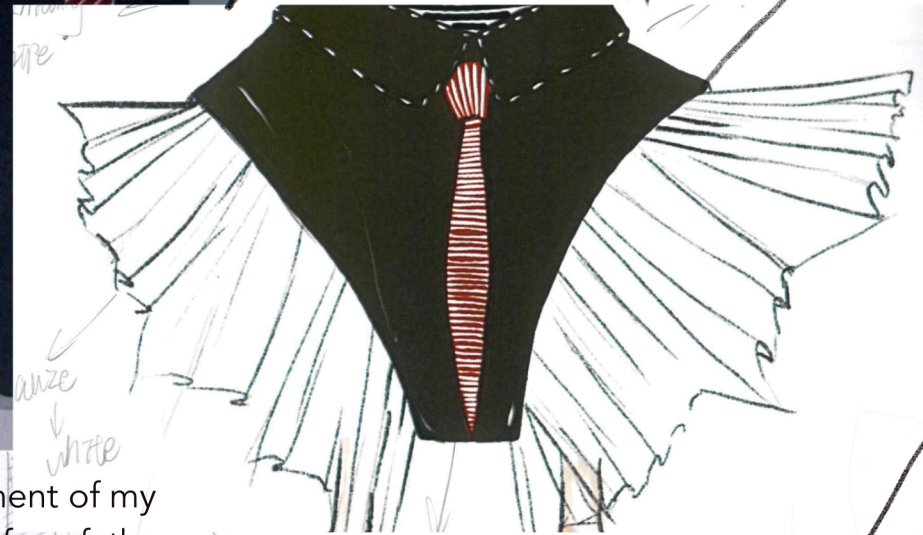
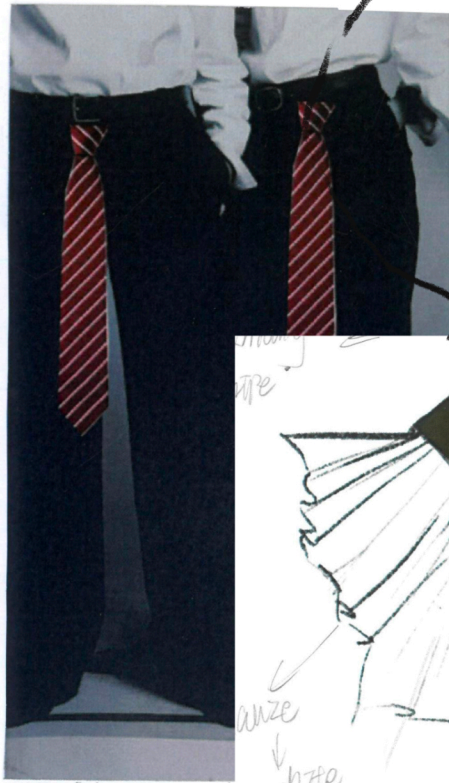
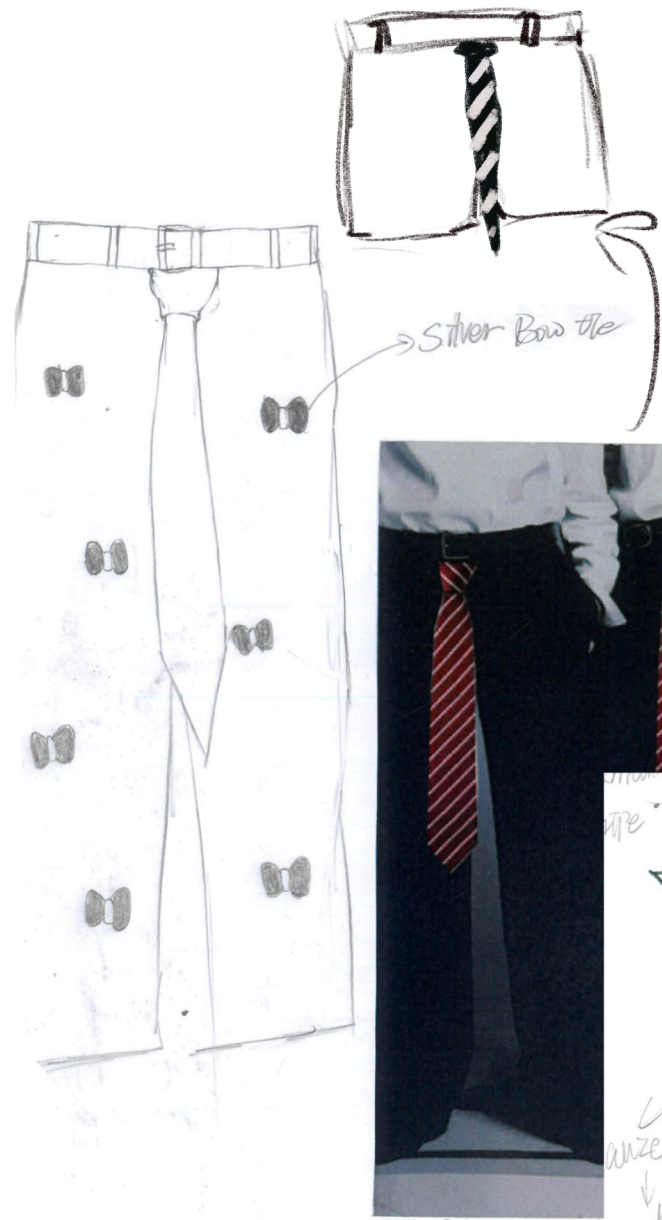


same sleeve
drap

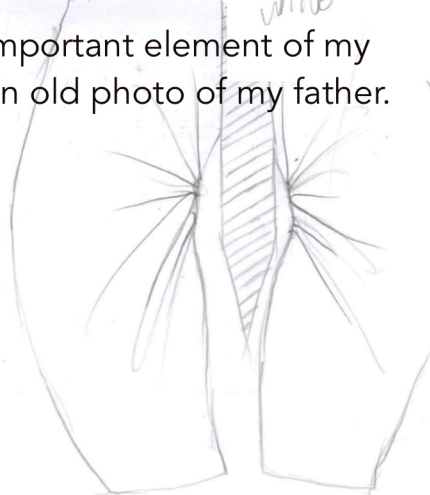


In the draping process, I experimented with combining lace and tailored suit silhouettes, exploring the contrast and balance between softness and structure.

This design language carried through into the final looks—for example, lace detailing on the sleeves, serving as a subtle continuation of the wedding-inspired elements.



The tie was a very important element of my project, inspired by an old photo of my father.



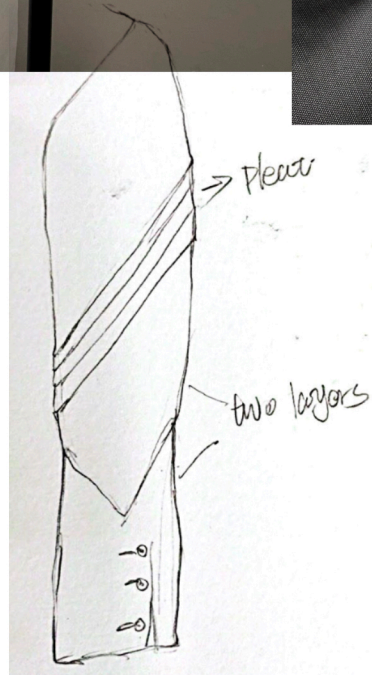
Bow tie element from bridegroom.



For the suit I tried putting the front on the reverse and the collar on the back. A more interesting design that can be used for the back.



Front
Collar



Back Collar





