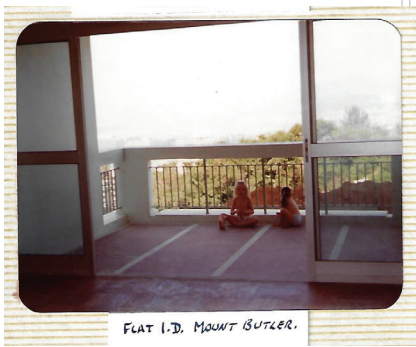




BAGUIO VILLA HOVA KVA.



FLAT 1.D. MOUNT BUTLER.



CONNECTIONS

Natalie Hutchings-Emery

Contents page

Look 1 Page; 4-21

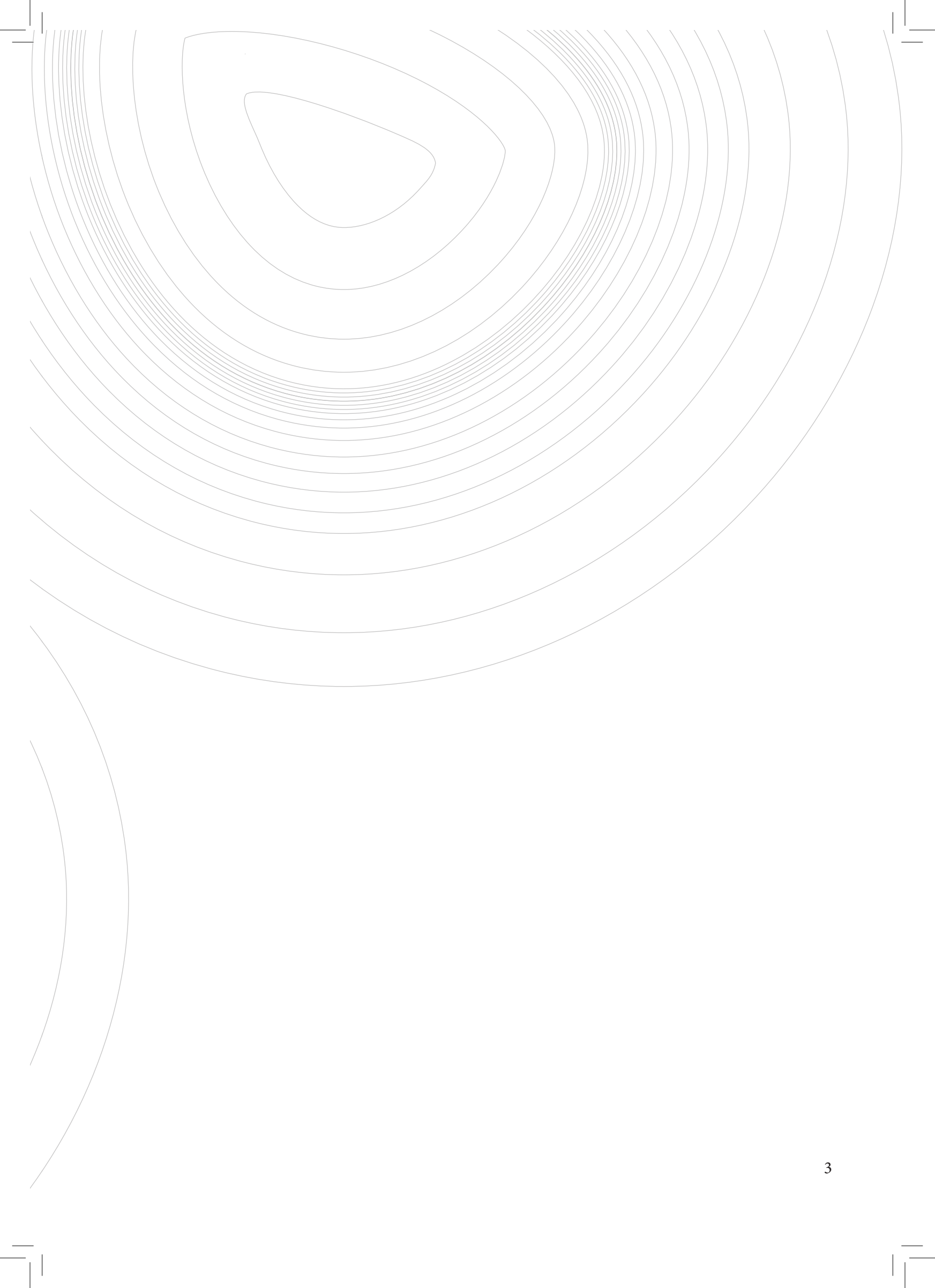
Look 2 Page; 22-43

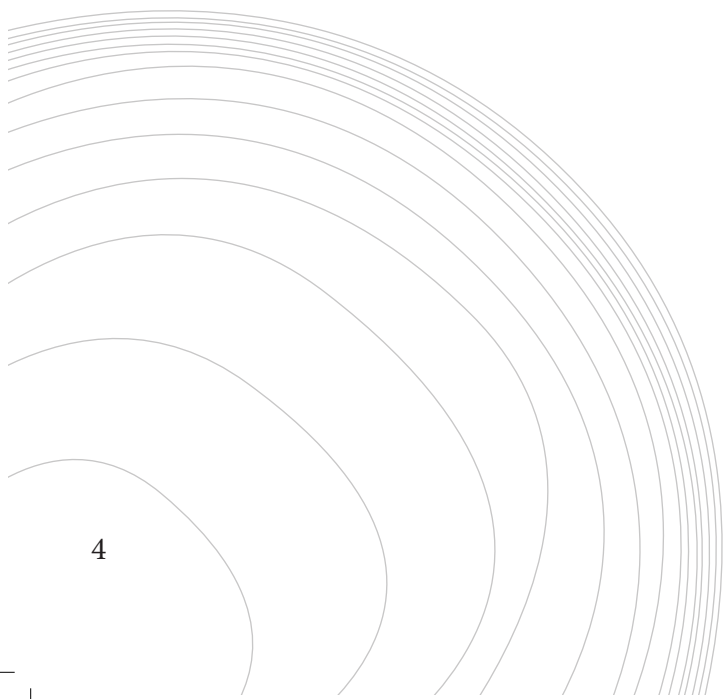
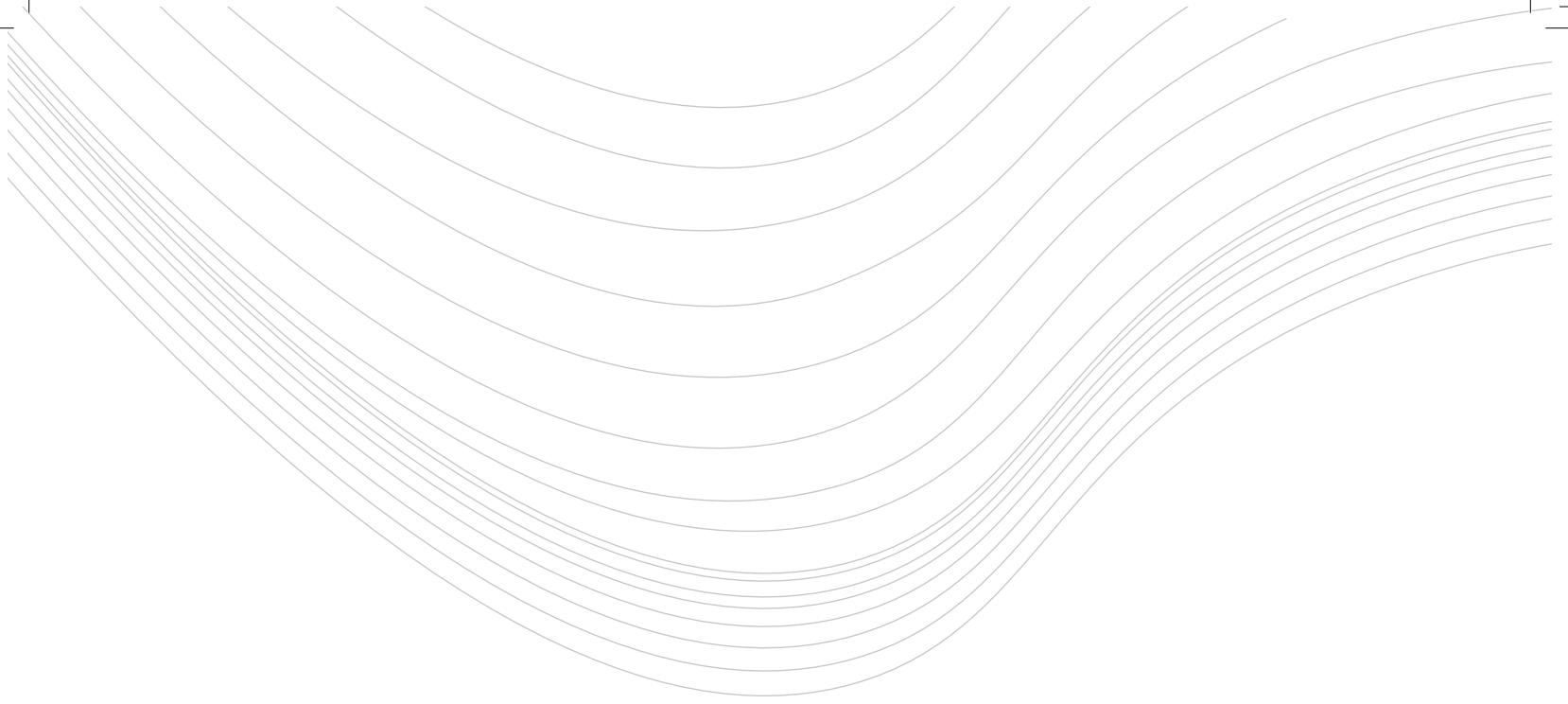
Look 3 Page; 44-71

Look 4 Page; 72-83

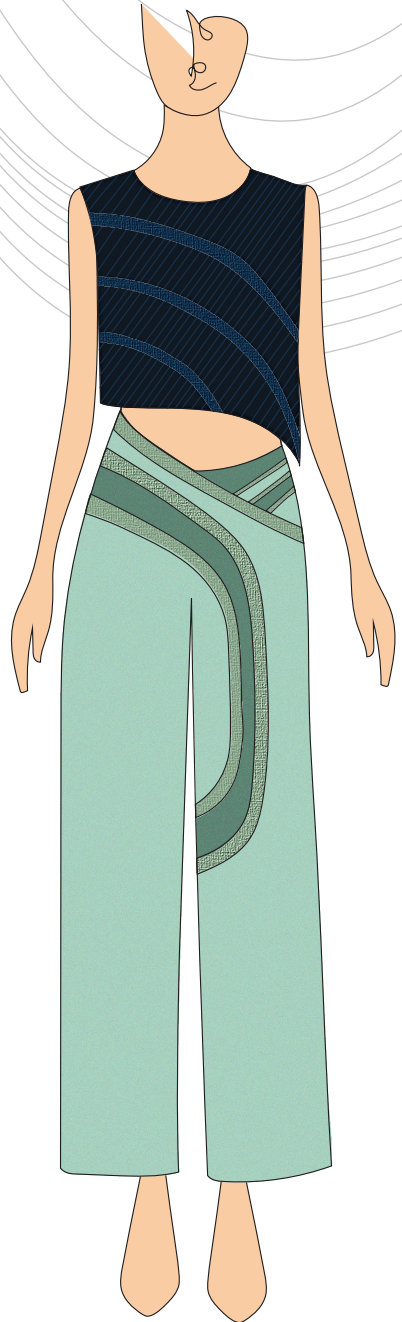
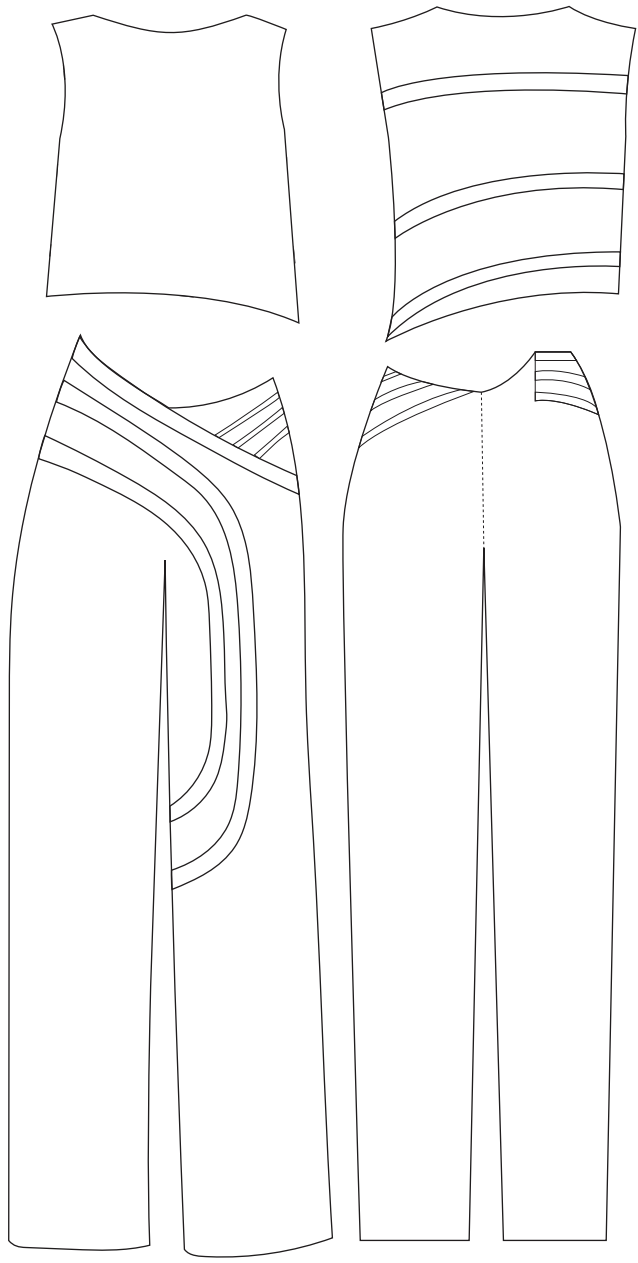
Look 5 Page; 84-95

Look 6 page; 96-111

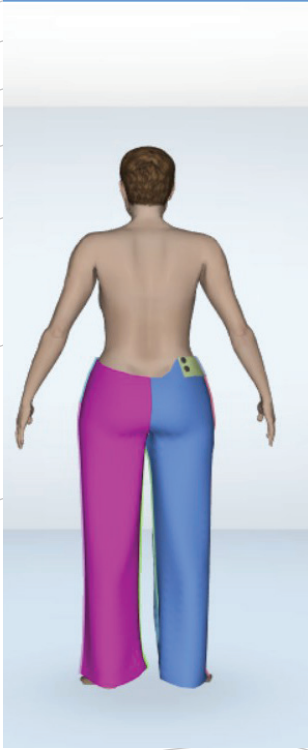




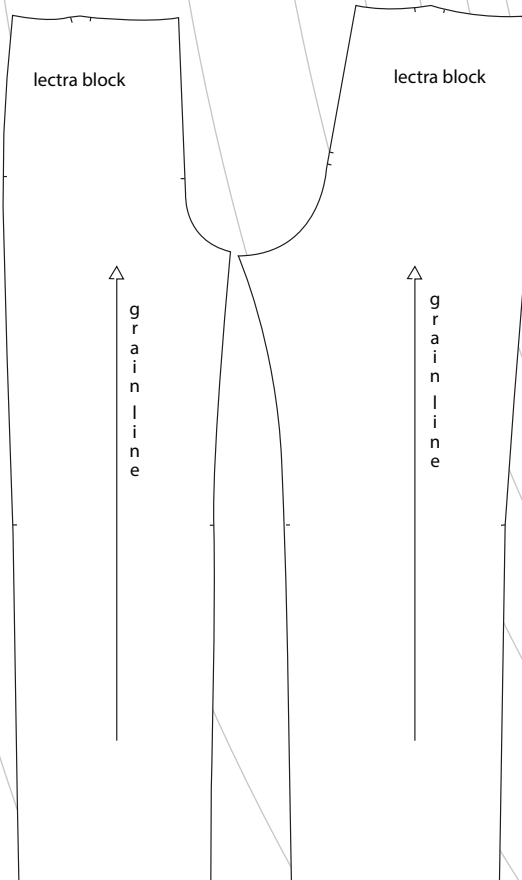
Look 1



look 1; Fríst-toile and Lectra



I started the pattern on Lectra creating the shape of the trousers I wanted to then create different panels with the ribbon by draping them onto the toiled trousers.





I then toiled the fit and found it fitted well.

To then create the curve, I had to move onto flat pattern cutting as I had to manipulate the curve of the ribbon to find how the seams would curve.

To do this I had to drape the ribbons I had already steamed into a curve.

While creating the panels on the trousers. First, I ironed the ribbon into the curves and shapes I desired.



Draping Ribbon



I then draped them on the stand with the trousers, marking the trousers and converting them to paper.



When I toiled first, I had the right panel of ribbons ending at the side seam. This made me realise that they should extend through to the back. I then made these changes on the flat and toiled the panel again. I also took out some excess in the front top panel.

Second Toile

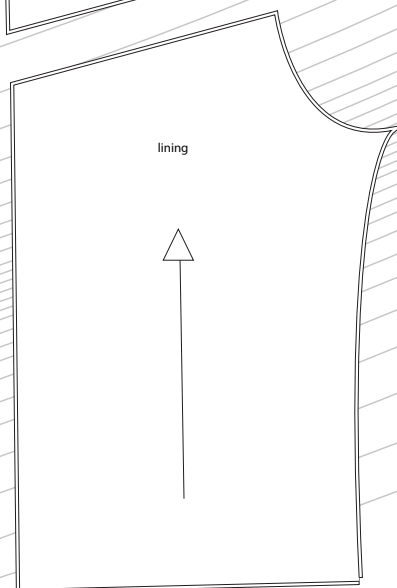
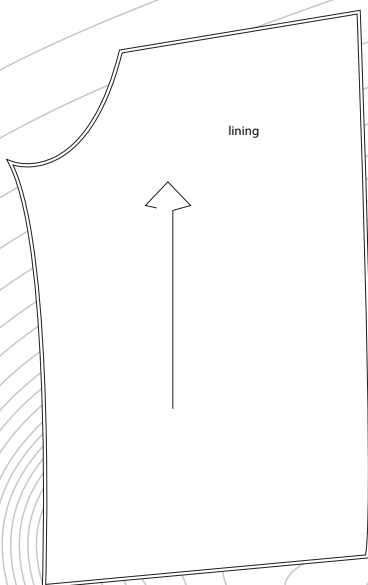
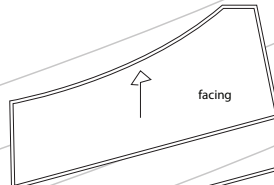
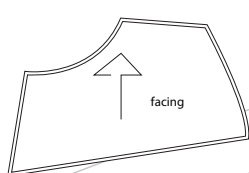
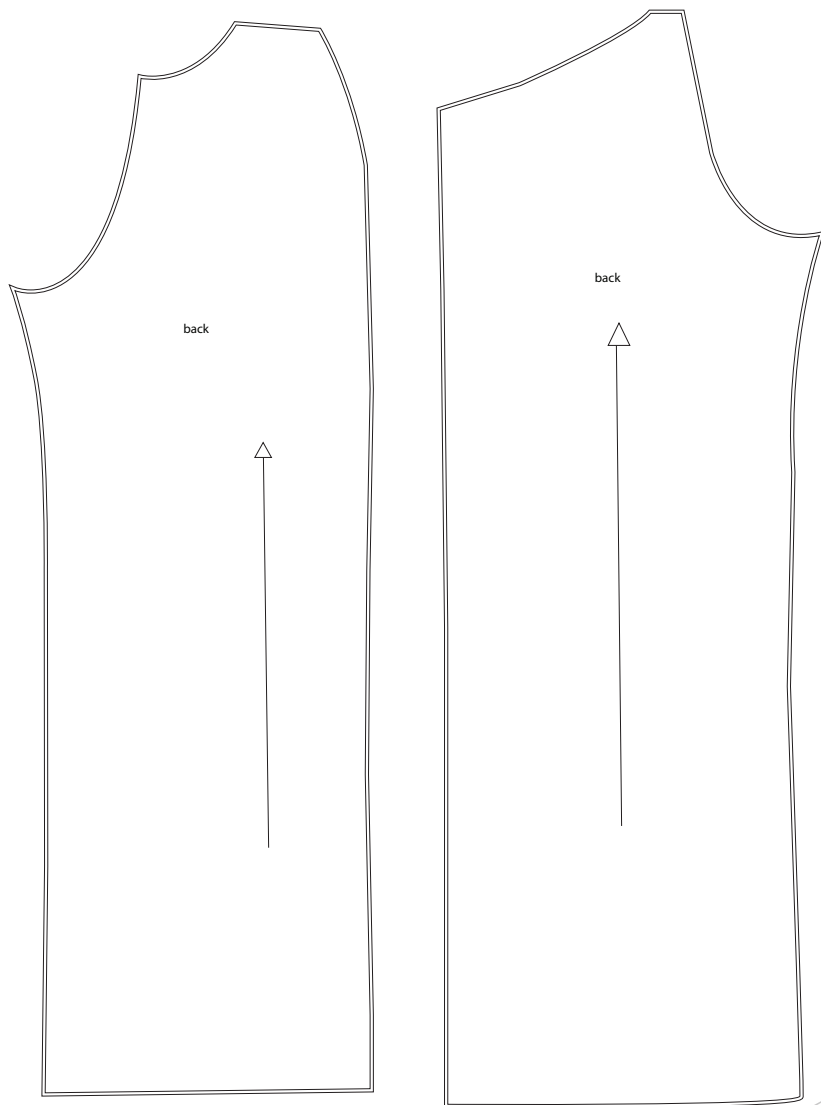


I then checked the fit on a model and found the front of the belt wasn't sitting right. I then took that in to ensure it was sitting flat. I also decided to remove the side seam across both the ribbon panels to make them look more finished.

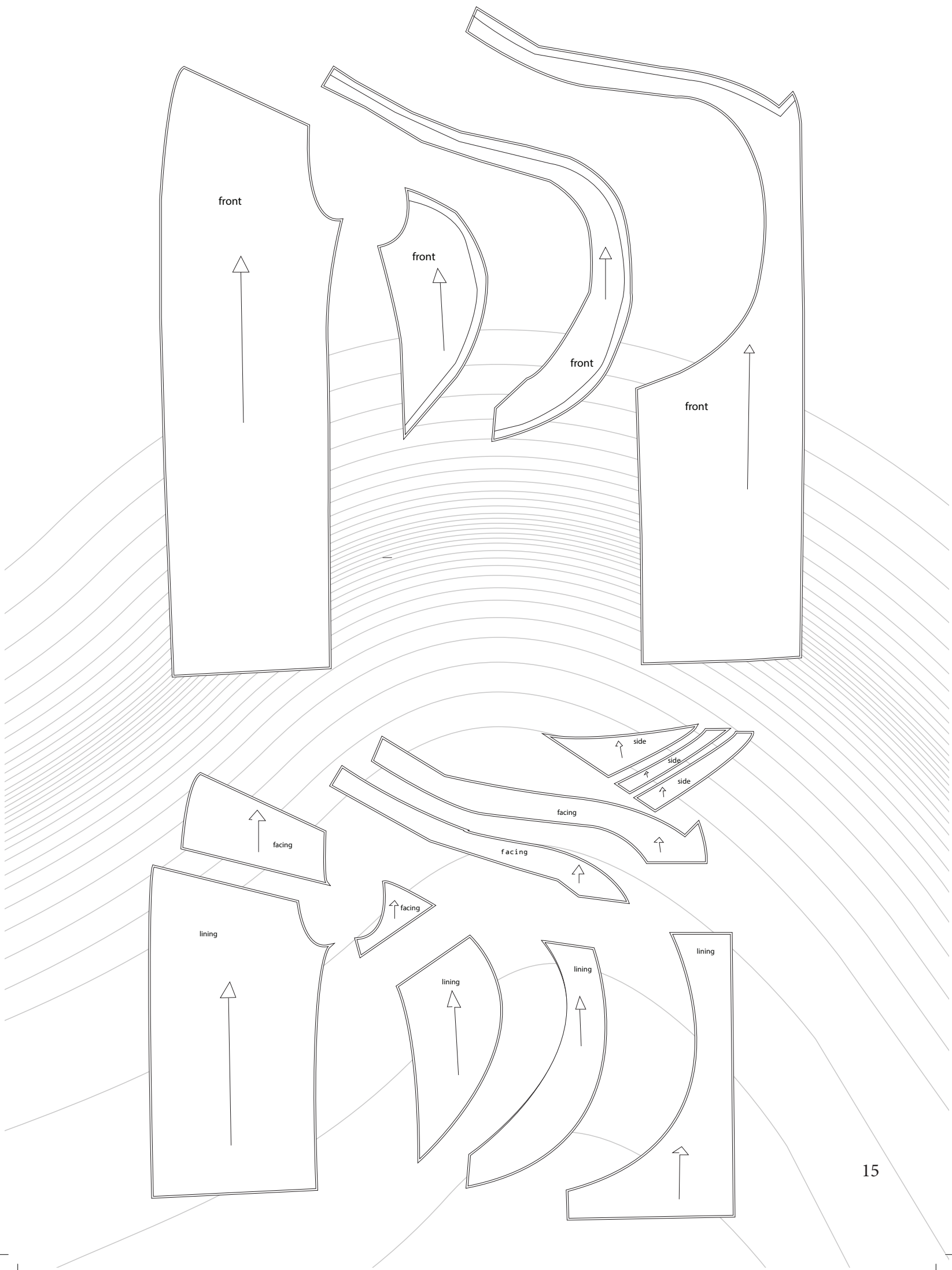
Final Garment







Final Patterns

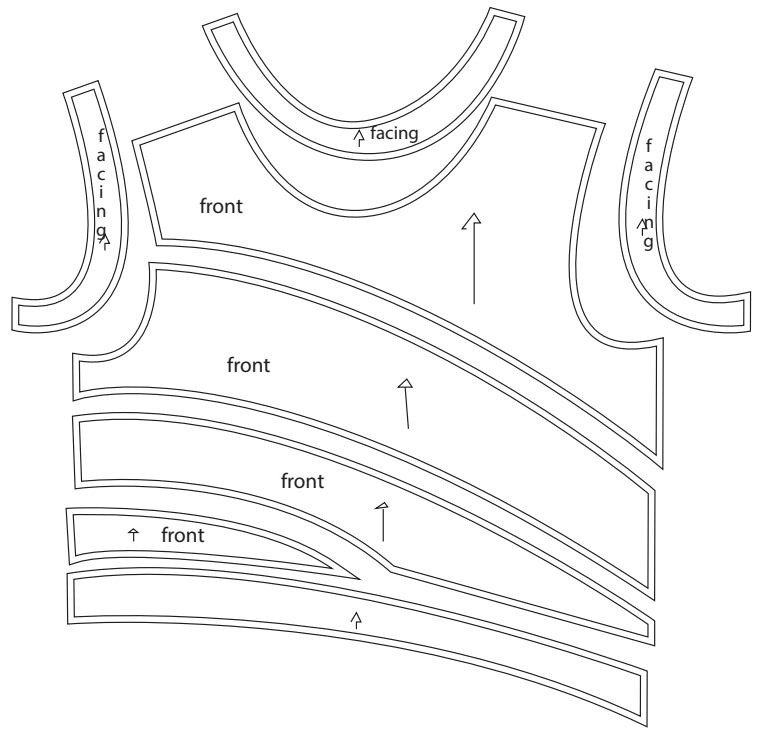
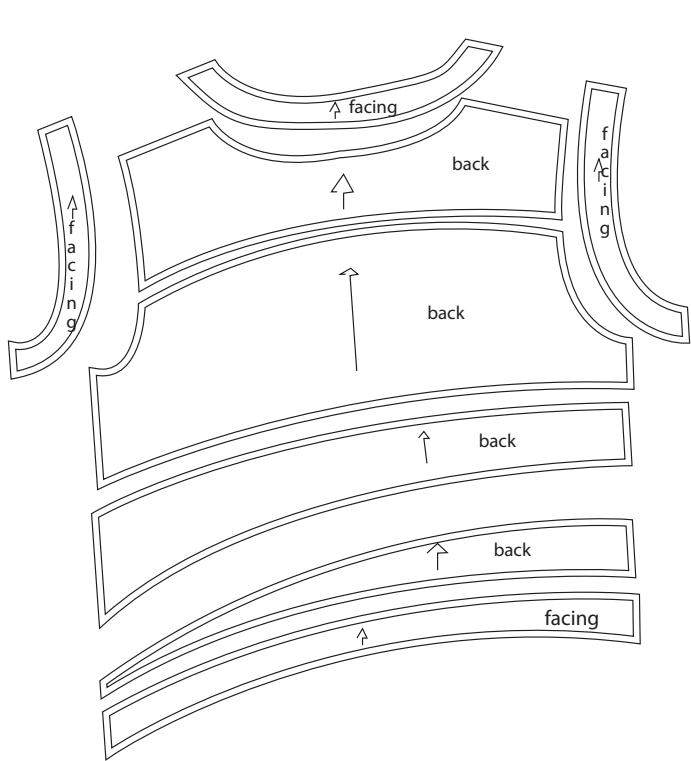


Look 1; First top toile

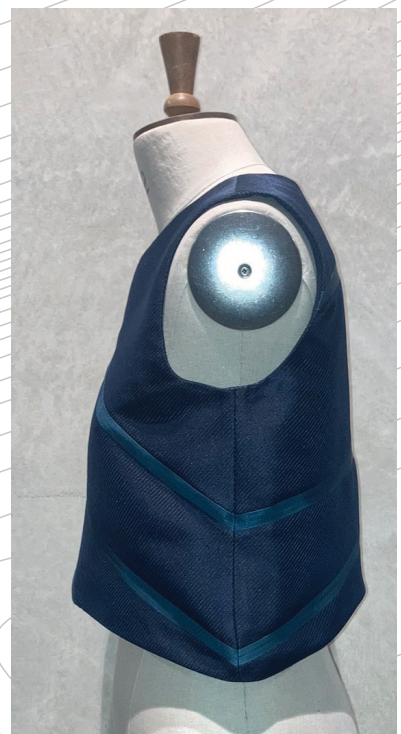


using the basic bodice block I move the bust dart into the new seam I had created.
I then straightened the side seams to make the fit looser.
I did not alter the dart in the waist as I wanted the top not to be fitted.





final top and patterns





Look 1; Final finished look

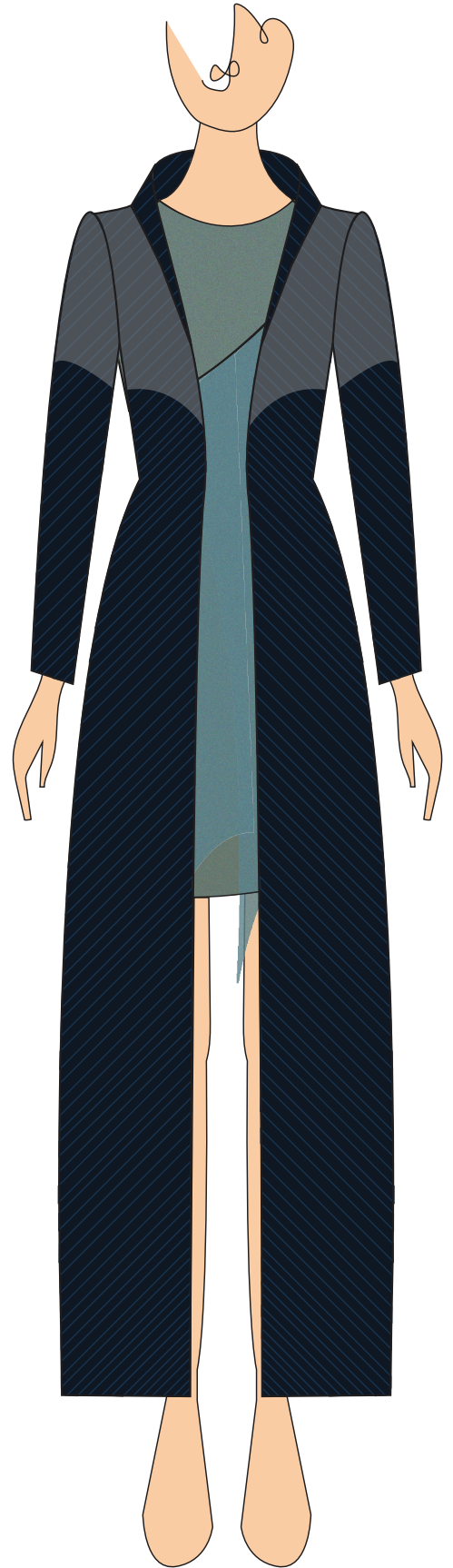
Front

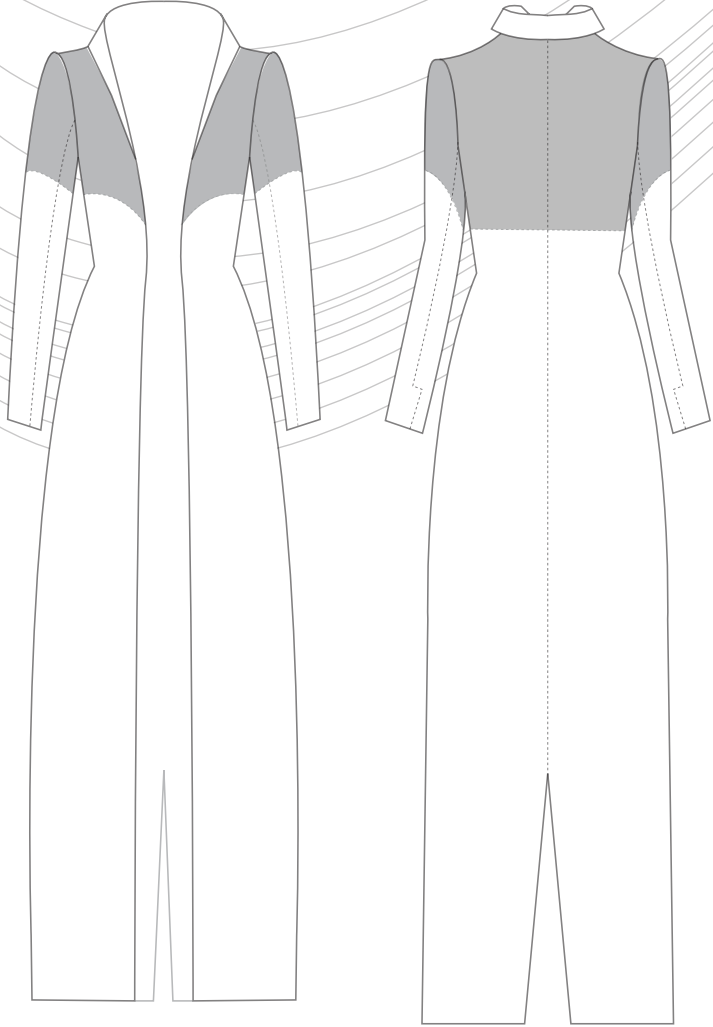
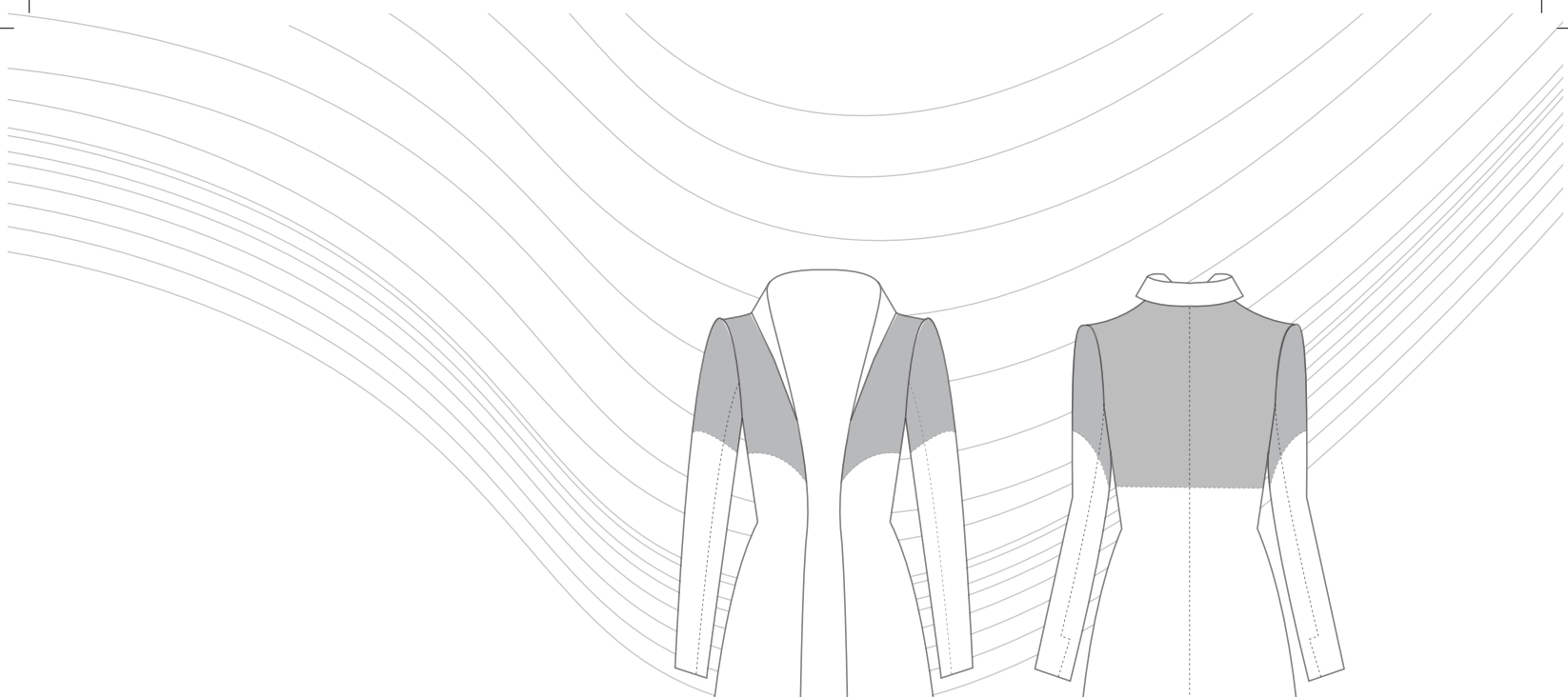


Back



Look 2







LOOK 2; First toile of jacket



In my first toile, I realized the error I had made with my sleeve and had to fix it. I also decided that the back drape wasn't what I wanted it to be and decided to change the shape. The centre back opening was also too high and I lowered it.



In my second toile, I fixed my sleeve.
I also recut the drape in the back and was happy with how it was sitting.

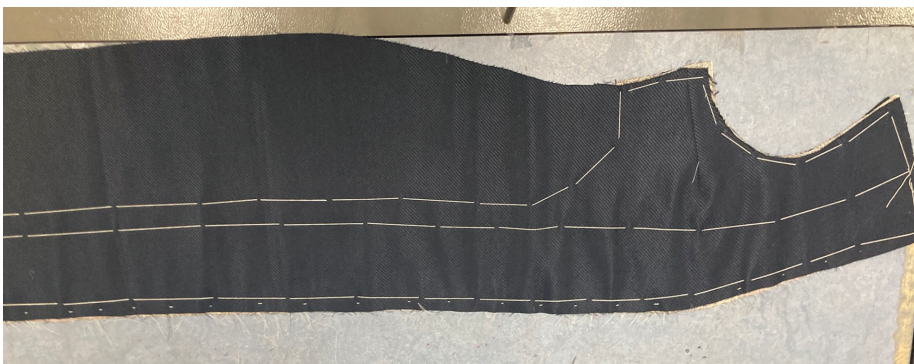
Second toile

tailoring techniques



Pad stitching

Rotating the side dart on the canvas. Then closing shut using Silesia



Stitching the canvas on.

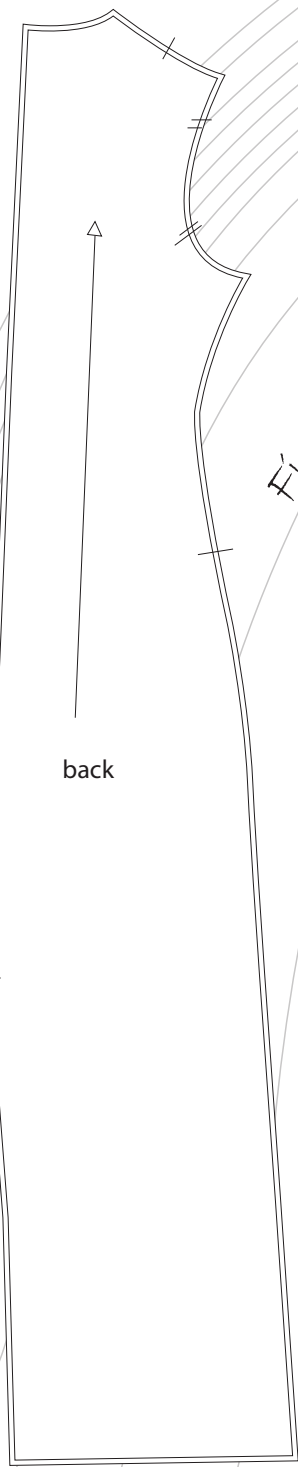
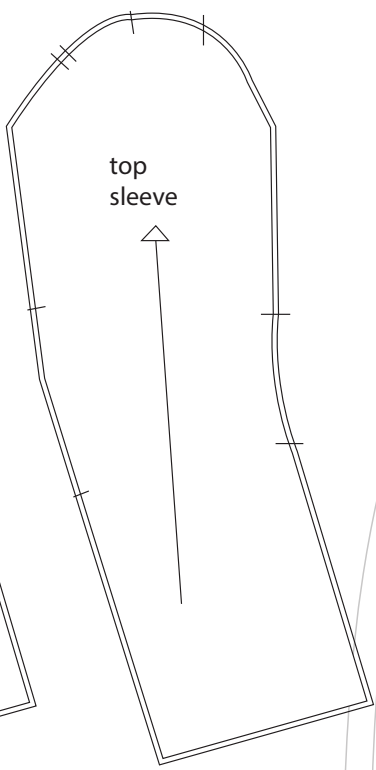


Final garment

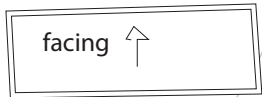
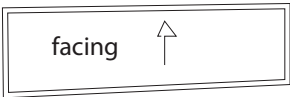
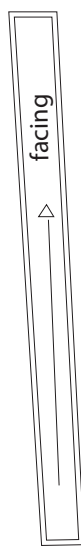


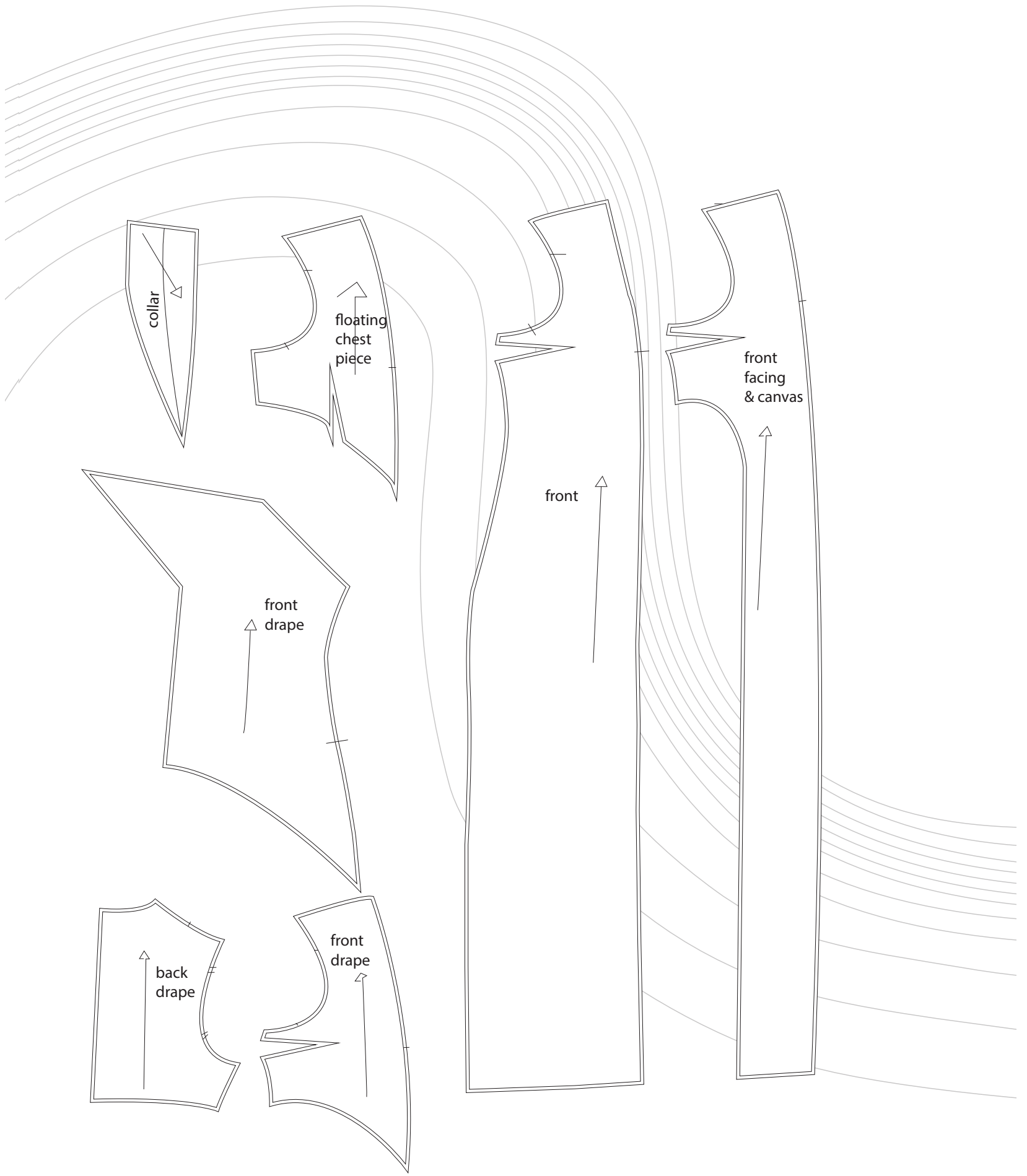
Inside of jacket

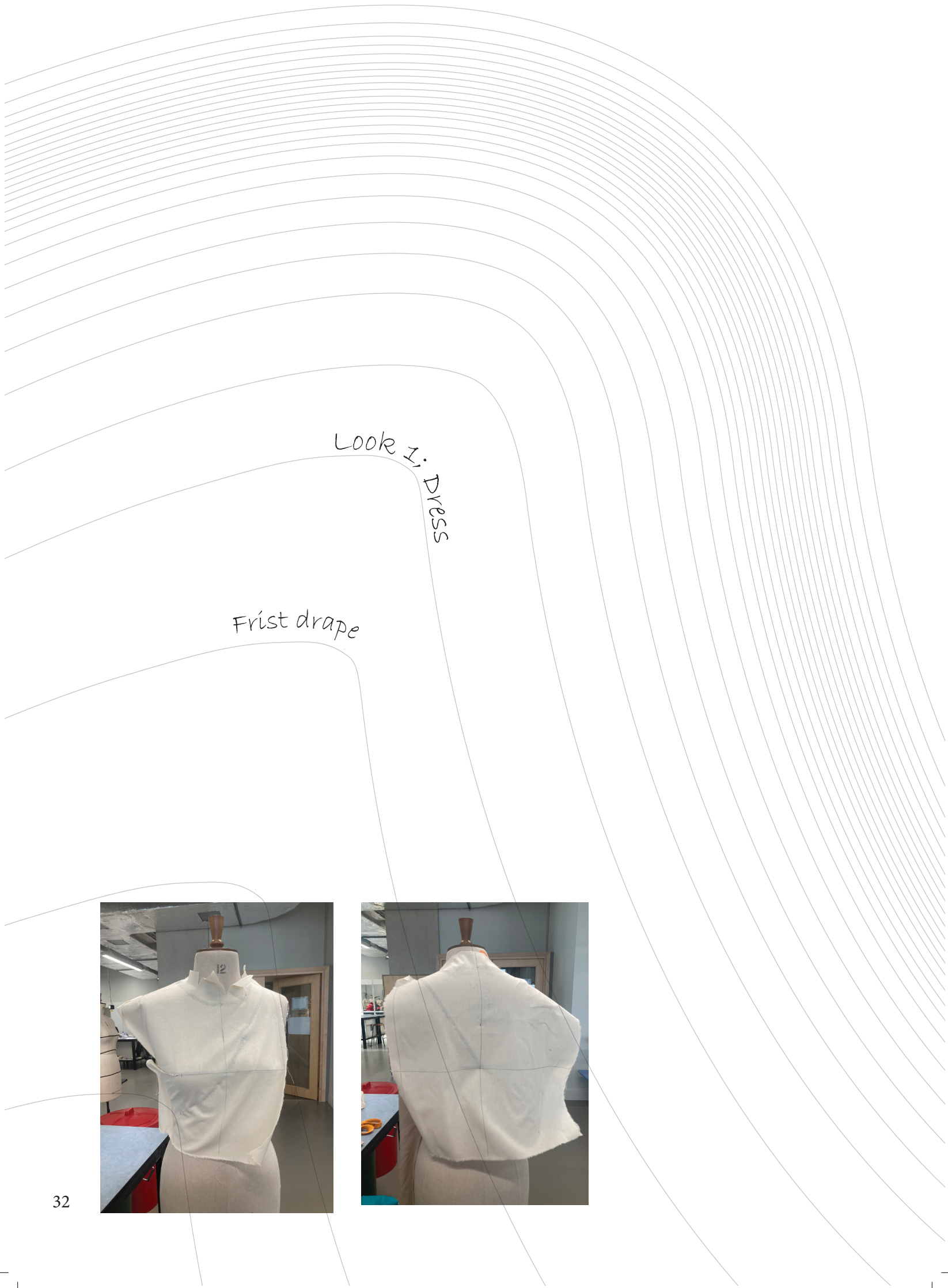




Final patterns



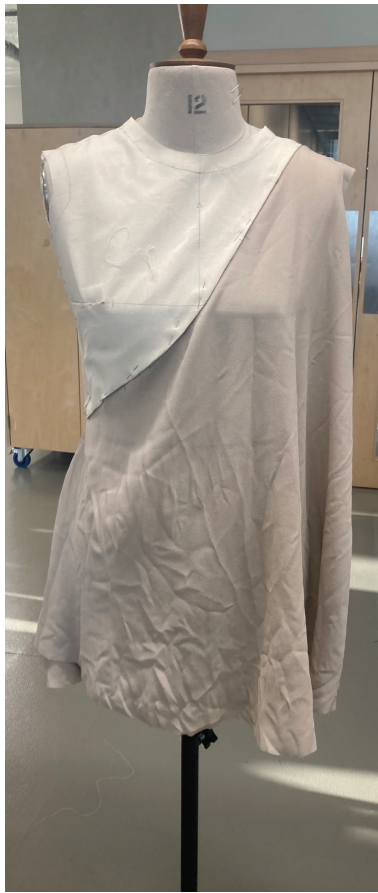




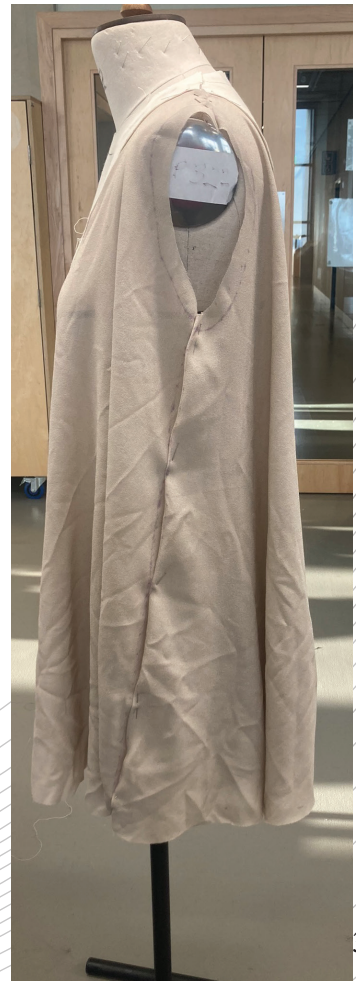
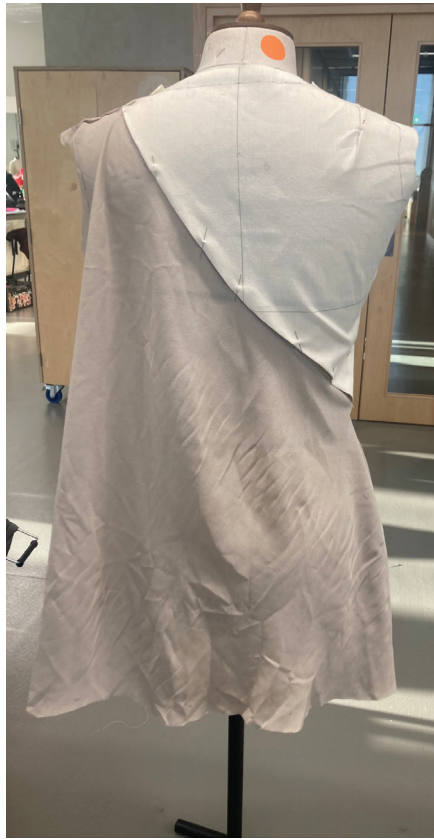
Look 1:
DRESS

Frist drape





First draping the dress, I wanted to ensure I had plenty of flair into the drape.





First Toile



In my first toile, I found the side seam wasn't sitting straight and the arm hole was collapsing on itself. I also decided then to move the fitted element onto the bias to remove the dart.



First toile with drape



In my second toile I decided that the draped panels need to be more frequent.

I was still having issues with my side seam and armhole so cut them back and straightened it again.

I also had a slight gap on the armhole on the other side but found I could ease it out in the final through the binding of the armhole.





Fiscal toute





In this toile, I found the increased flare was nice but not long enough and needed to be at more of a slant. I also needed to move my side seam back as I moved it too far. And open my arm hole.



front



Final garment



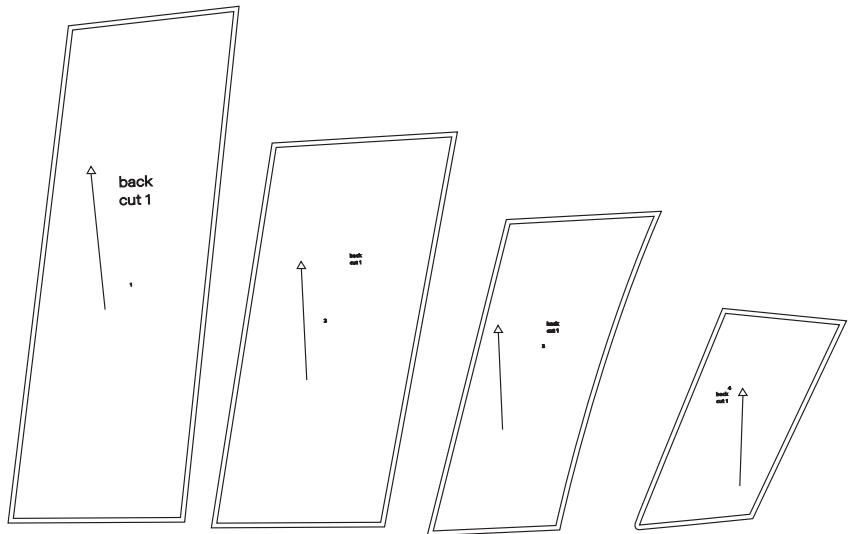
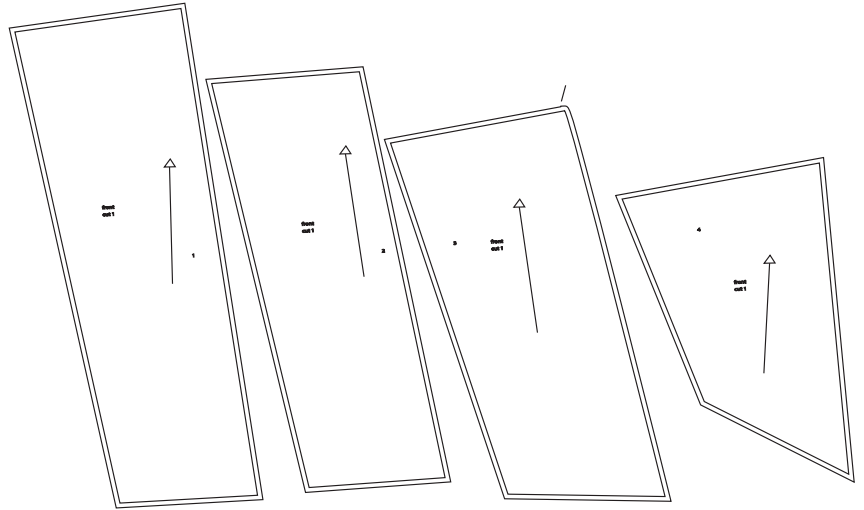
Back

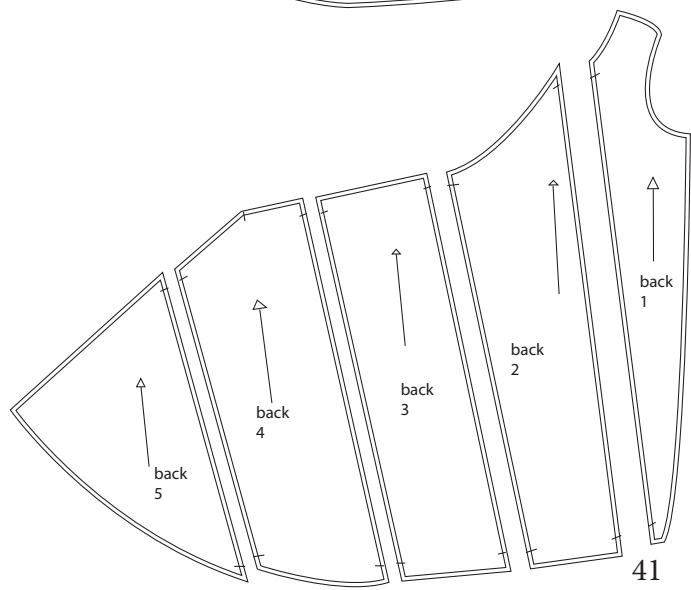
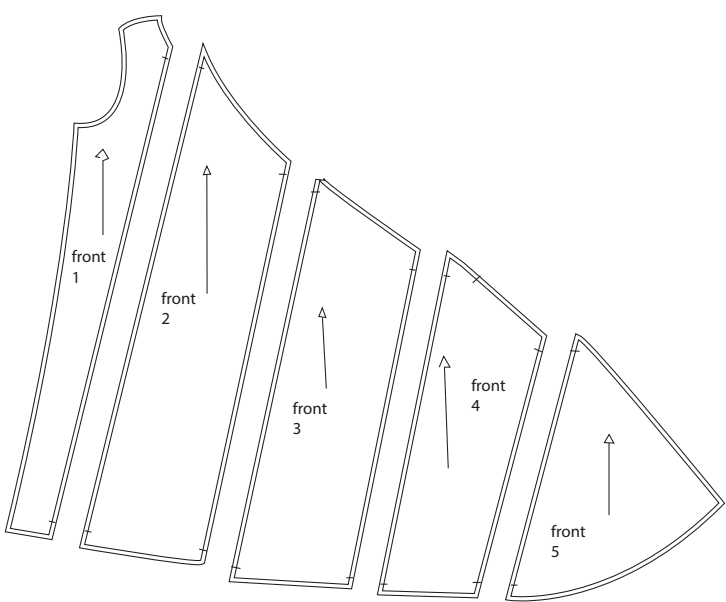
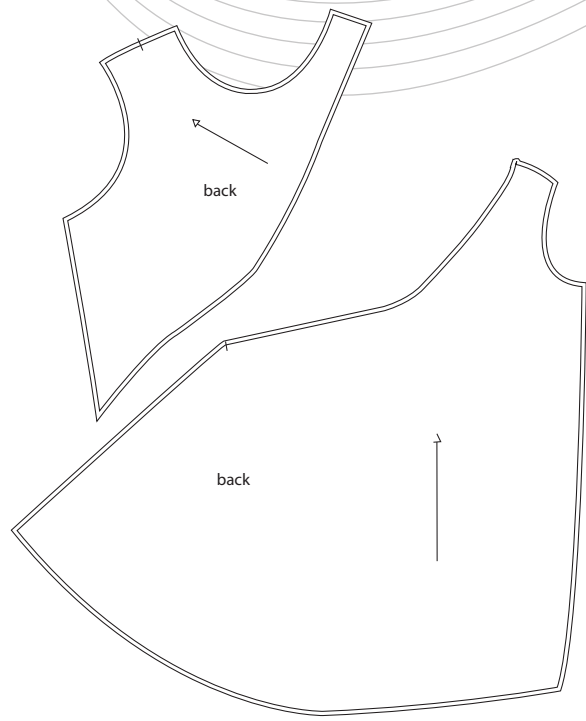
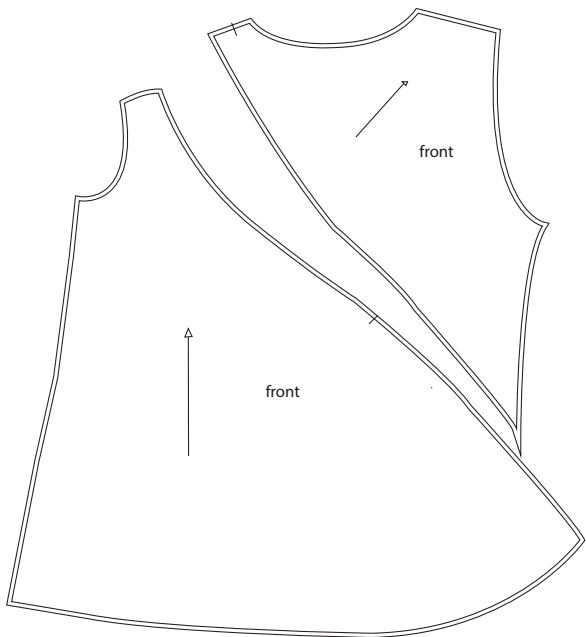


inside of garment



Finale patterns



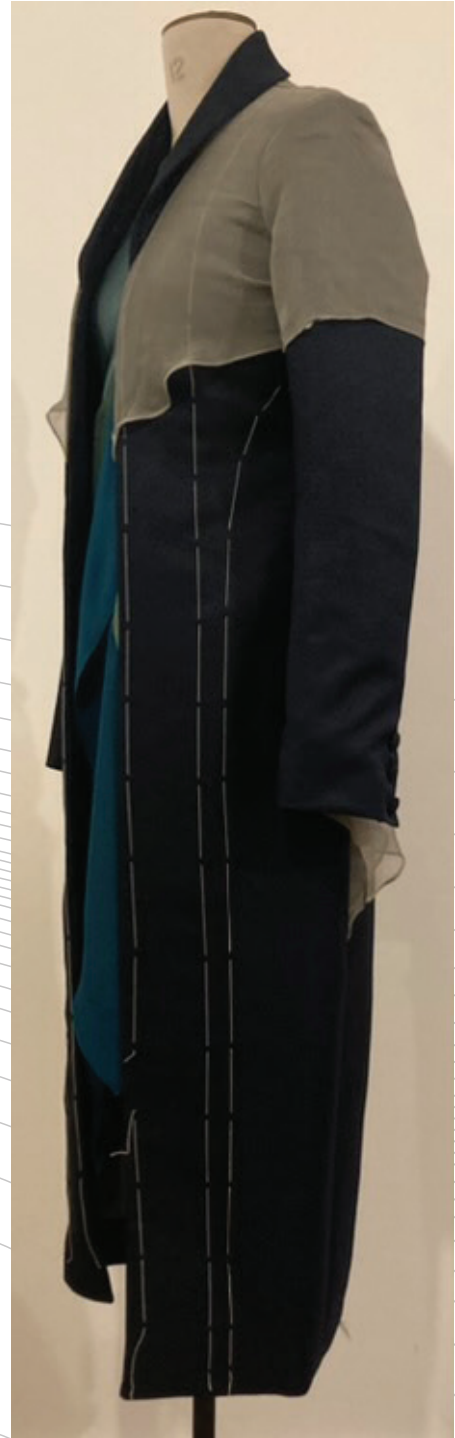


Front

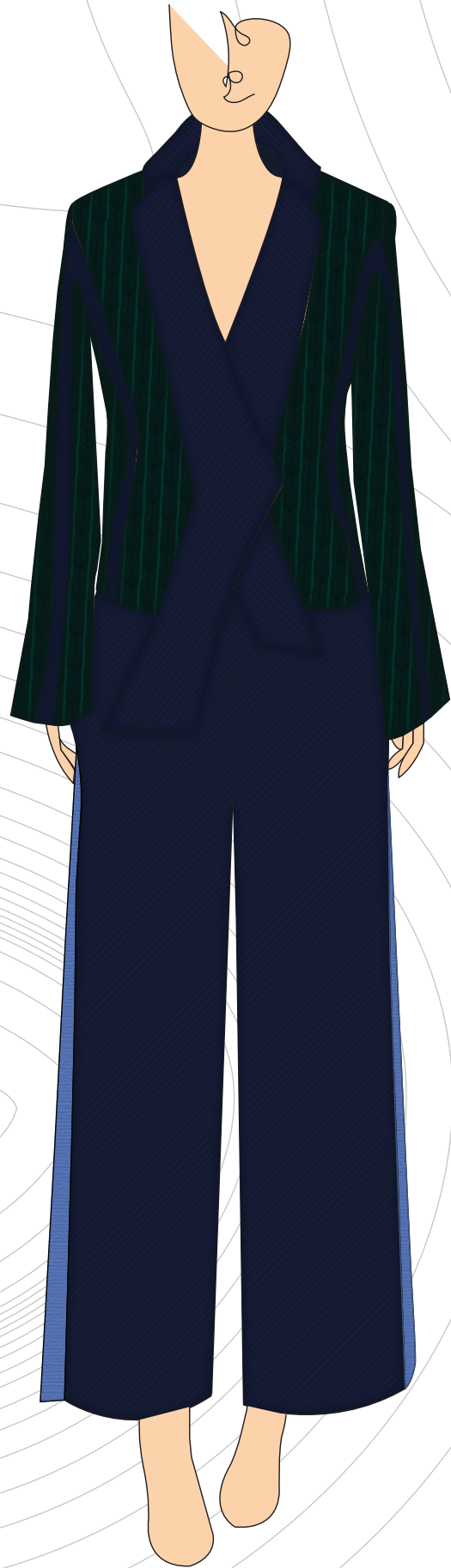


Look 1; Final finished Look

Side



look 3







Look 3:
contusion of top



To create this top i used the drape from the dress pattern i had made. I shortented the pattern and created a v-neck so the top wasn't visible under the jacket in the outfit.

First when sewing the top together i tried french seaming the necklines.

When i did this i realized you could see the seam from the outside and since the bottom and top layer were sewn together to stop the gather from pulling the layers i diced to finish the neckline and arm hole i would blind bind them.





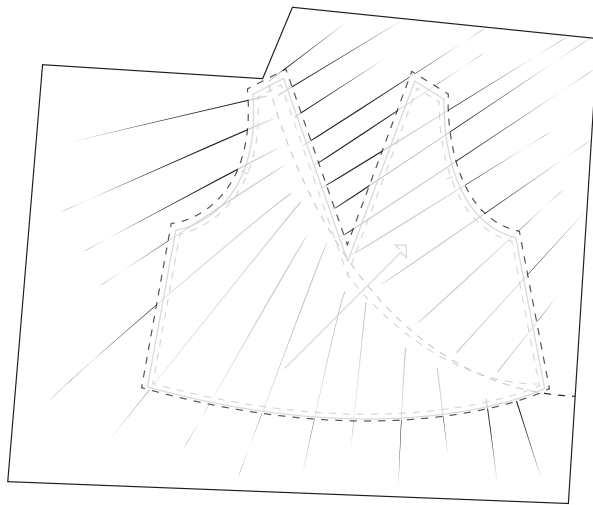
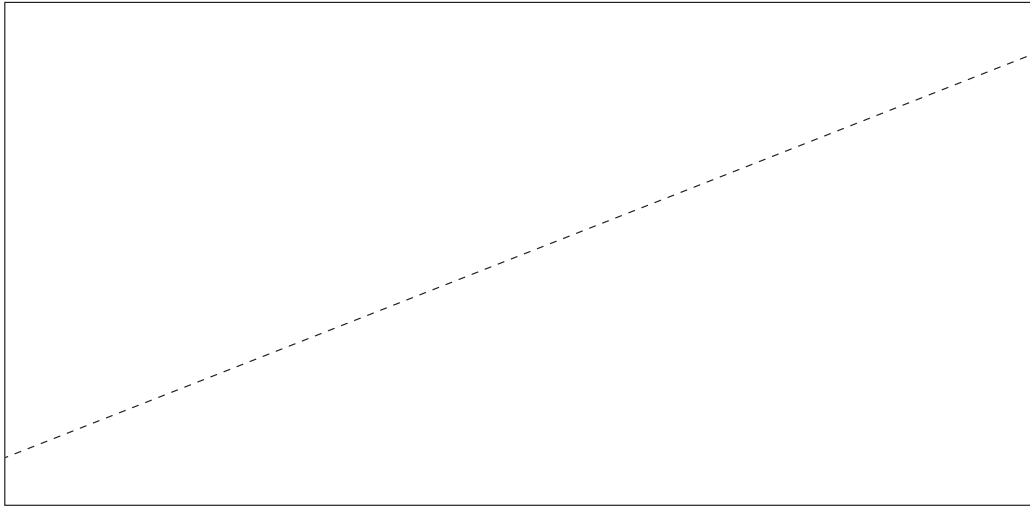
Front



Final Garment

Back



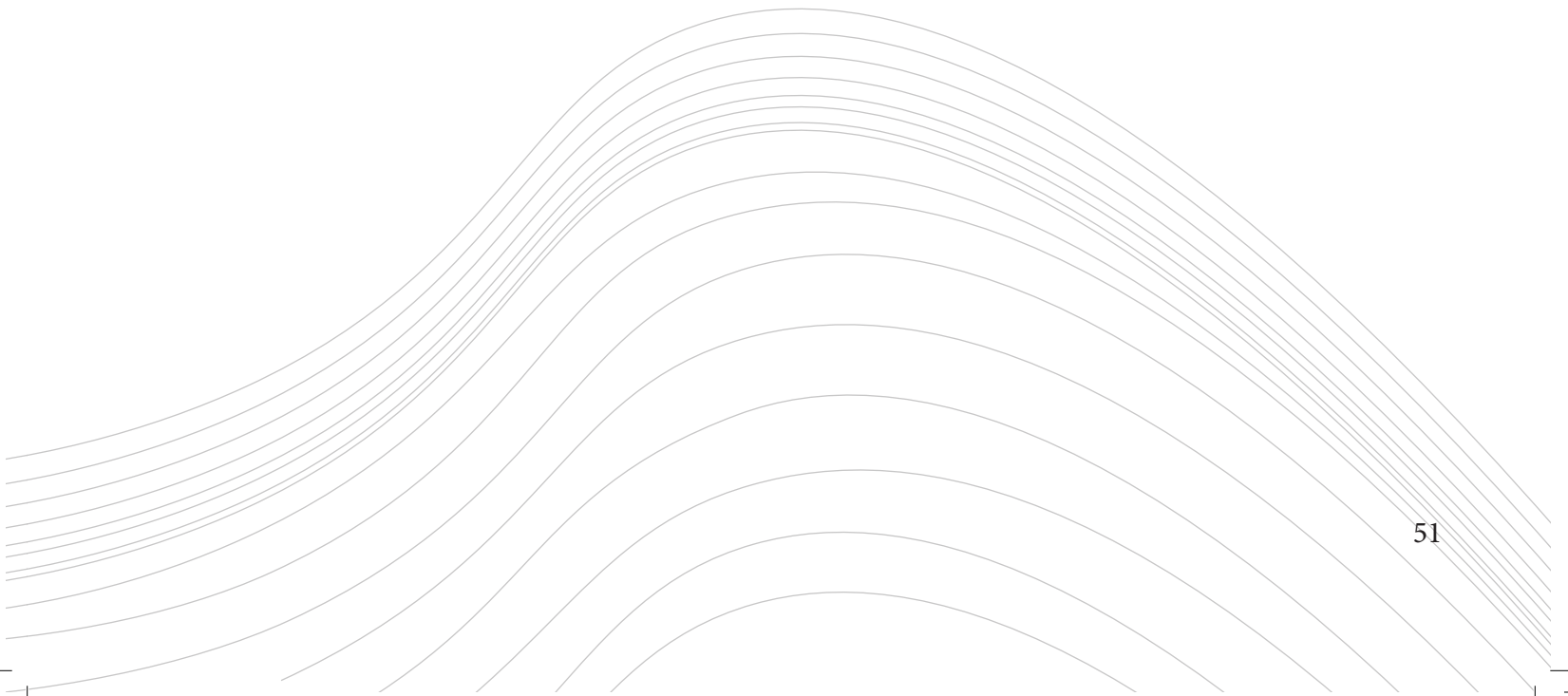
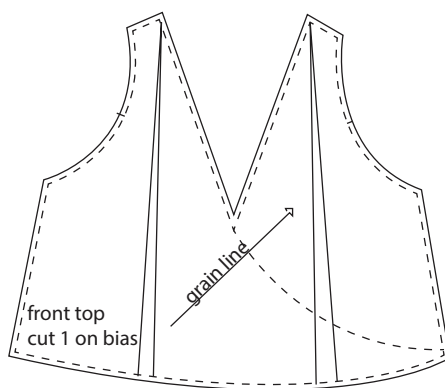
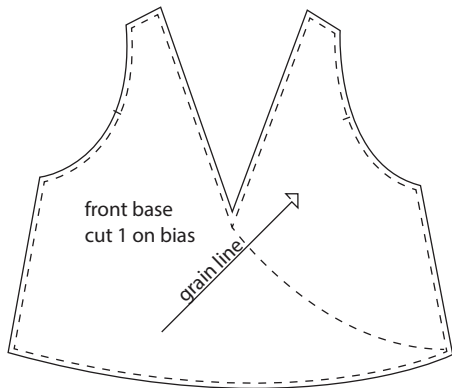
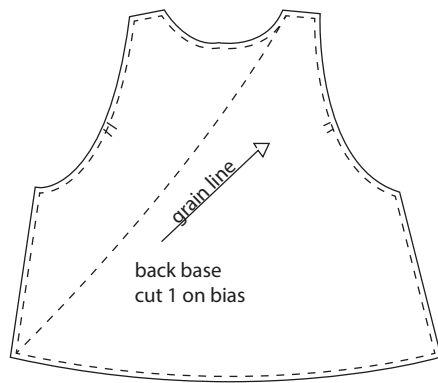
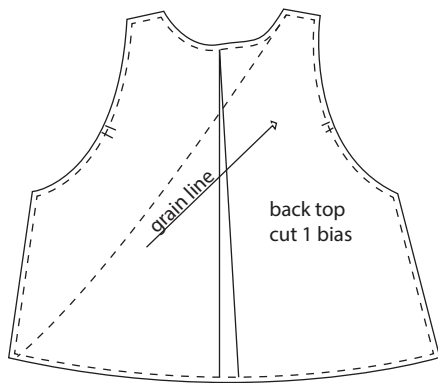
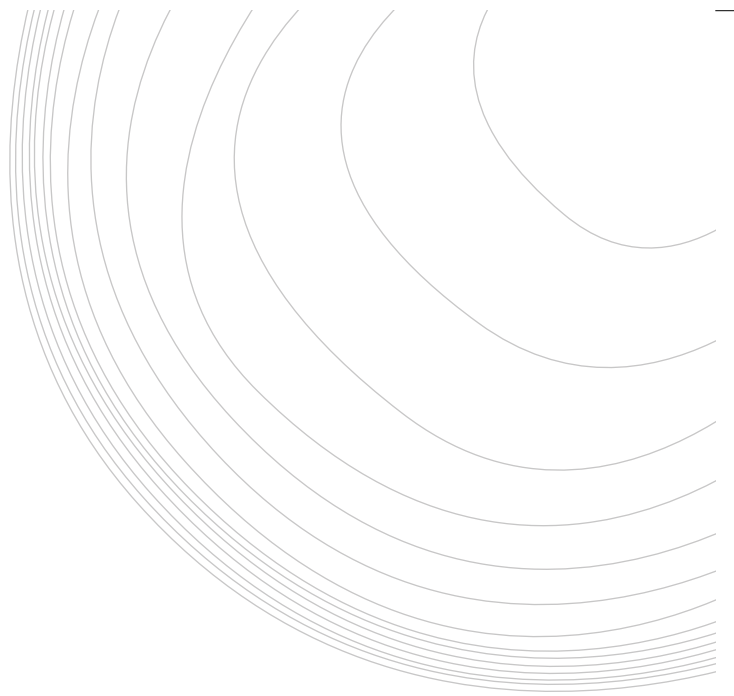


To create the middle layer of gathers i laid 2 meters of fabric out and using chalk drew in a line from one corner to the other staying on the bias.

i then used a lose stitch and sewed following the line i drew on

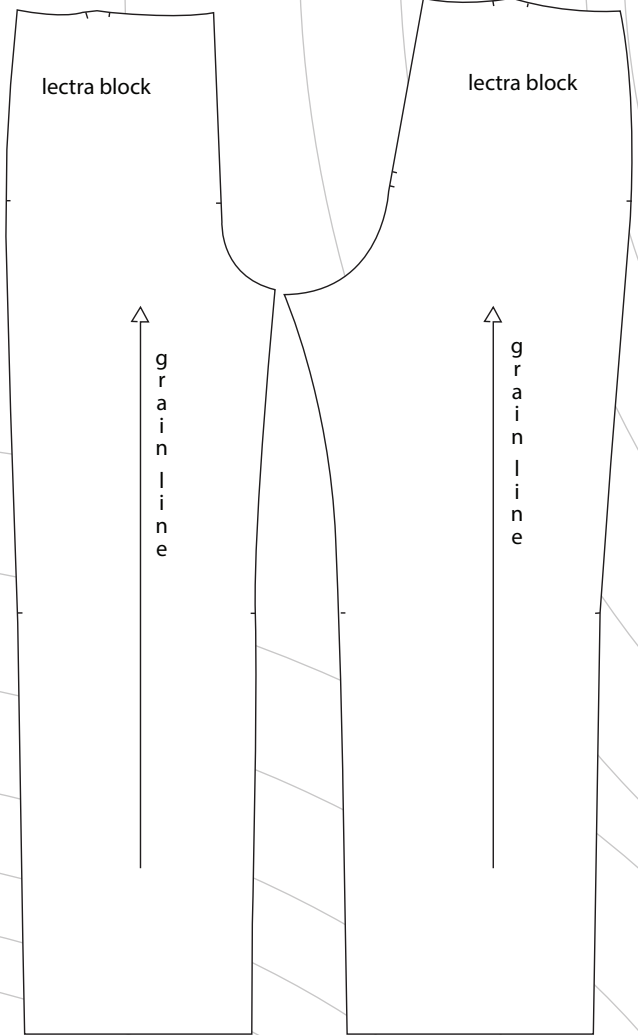
I then gathered that fabric over the top of my bottom pattern piece and pinned the gathered line of the fabric on to the line of the pattern and pinned all the edges on and trimmed away and then stiched at 0.5 cm seam allowance around the edges to secure it down.

Final Patterns



Look 3; Construction of

SKETCHES FOR



Fríst Toile



In my first toile i found the shaping in the sides was meeting at a point which i didn't want. I also found that the top layer side seams needed taking in more to ensure a better fit. I then went back to my lectra pattern to make my amendements.

Toile 2

When i did my second toile i did them as shorts to help me not waste fabric on testing the length as i knew it was where i wanted.
The cure of the top layer was much more successful this time.





In this toile i also added the fly and waist band.

when frist putting in the fly i realised it was to short and needed to be longer to ensure it could go past the hips.

Once i lengthened the fly the trousers when on smoothly.

the wasit band fitting along the bottom but had smalll gaping at the back. to fix this i pined and measured how much need to be removed from the waistband and made the changes to my patterns in lectra.



Front



Inside of garment



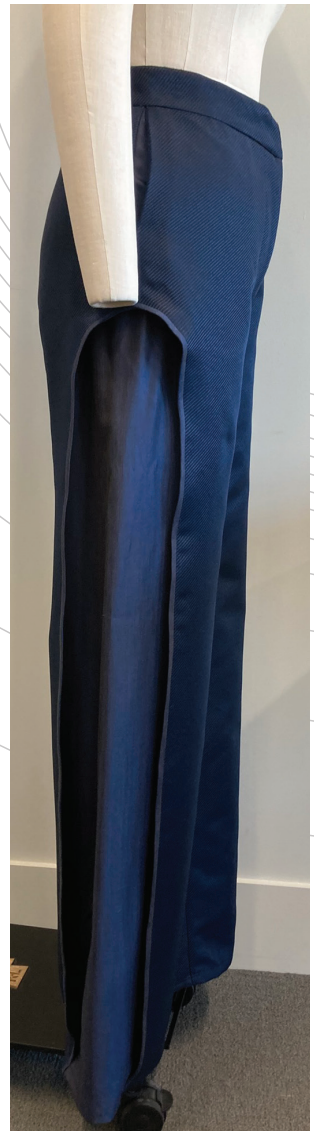
Final Garment

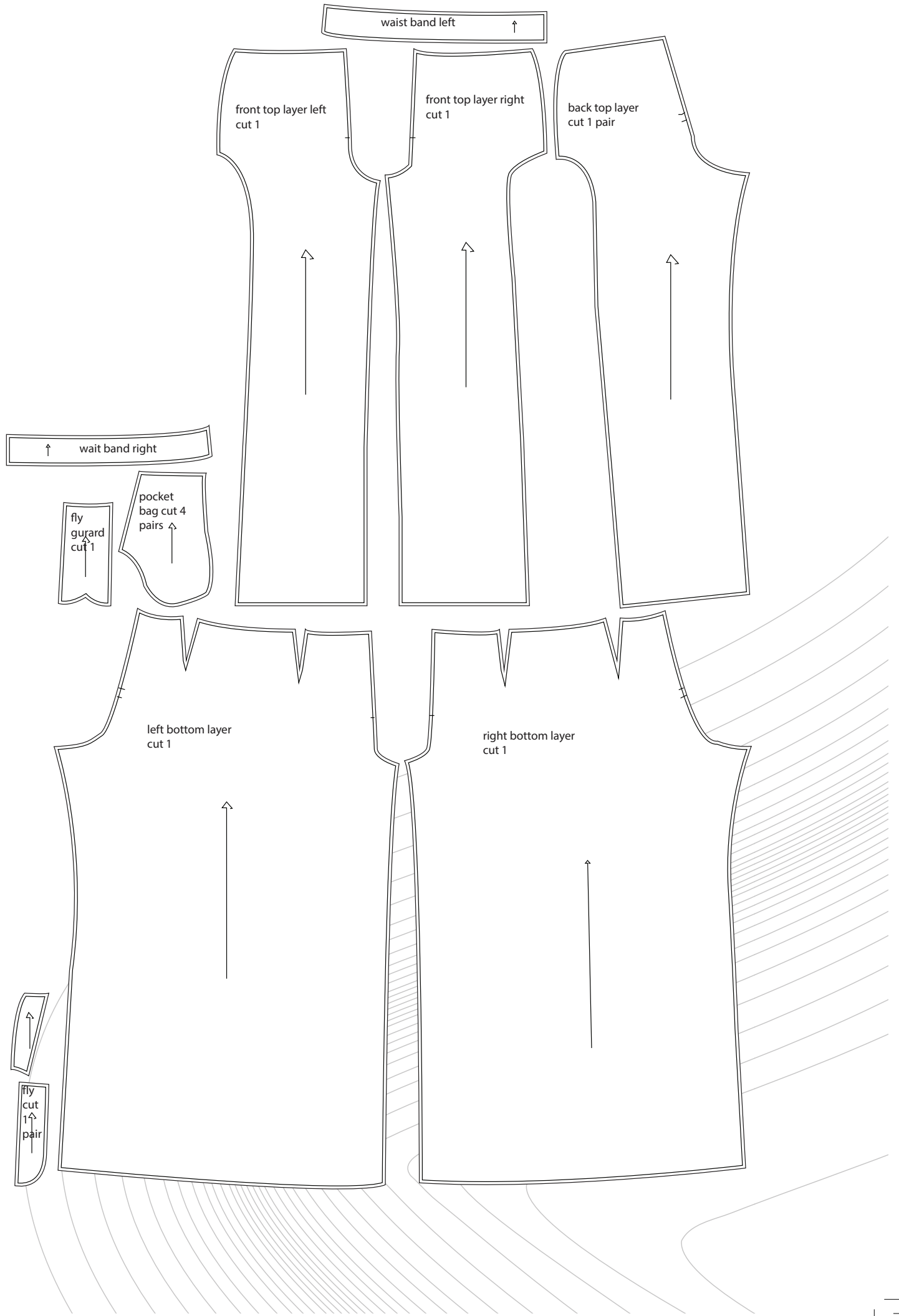


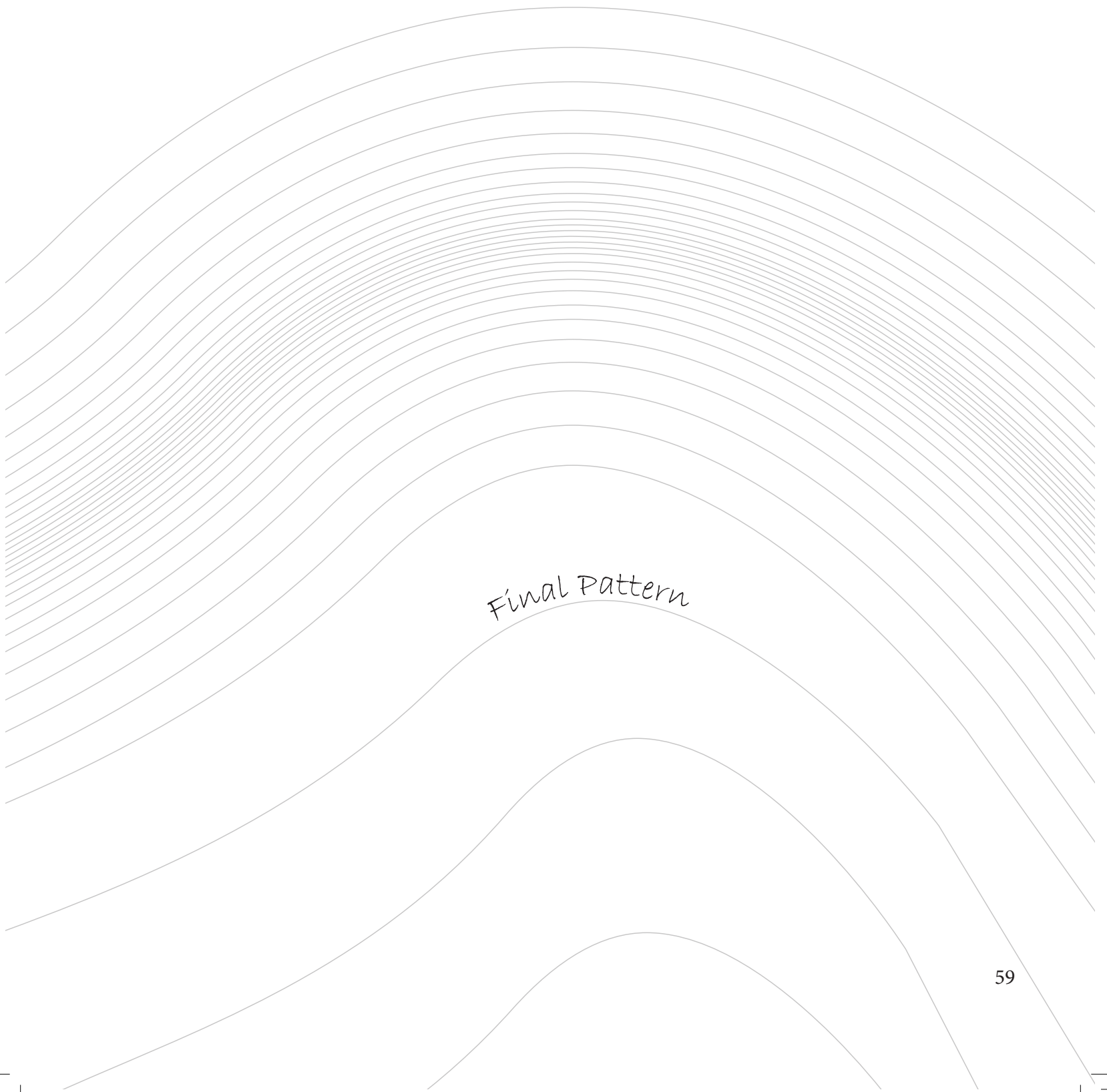
Back



inside of garment







Final Pattern

Look 3; Contusion of jacket

Draping



First i marked my lappel, bust and hem line.
I then draped my pieces on the stand insureing i keep the losse fit of the jacekt.
when i finished draping i pined the pieces together to check the fit and make any amendmets needed.





draping the collar i cut my fabric on the bias and draped and cut it to the shape i wanted.
After i then pinned it to the stand to ensure it fit right.

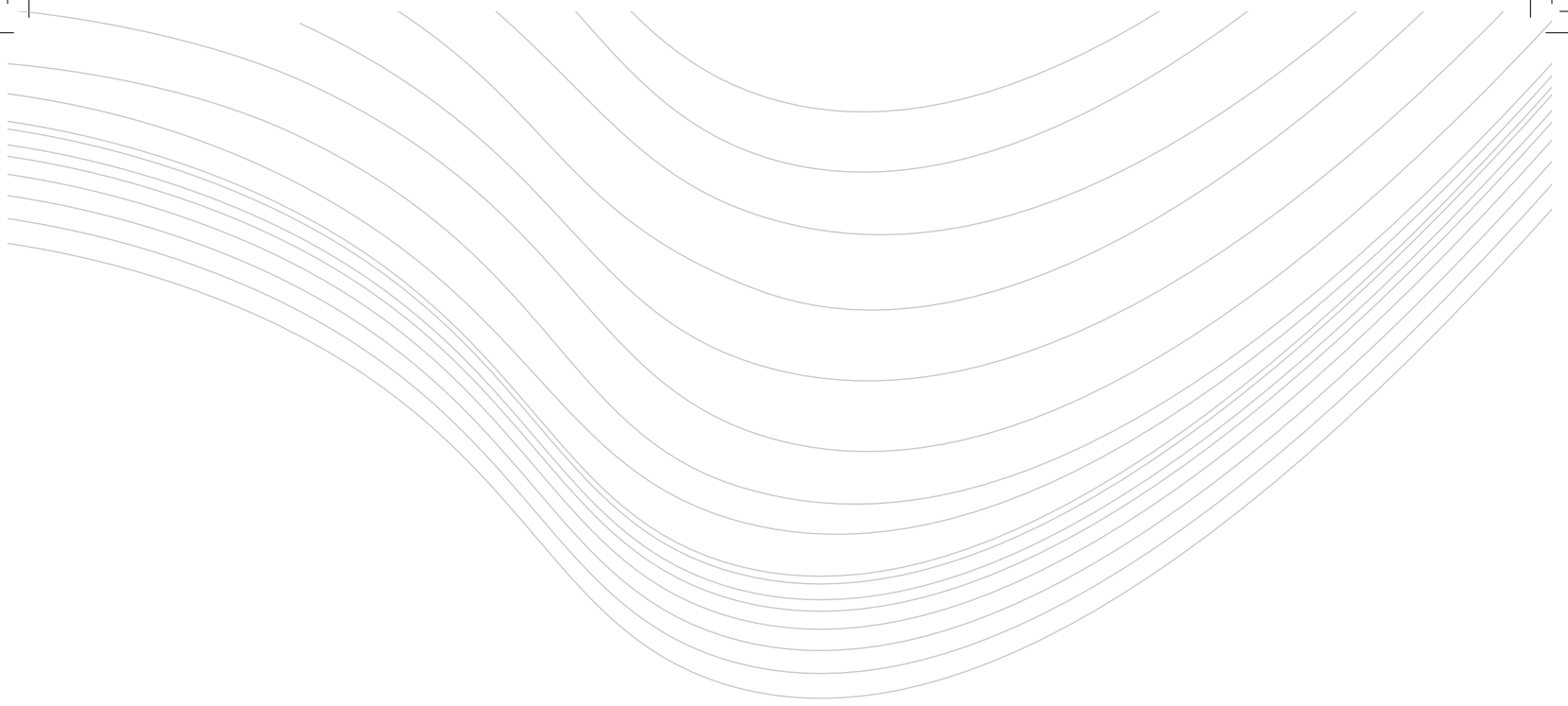


First Toile

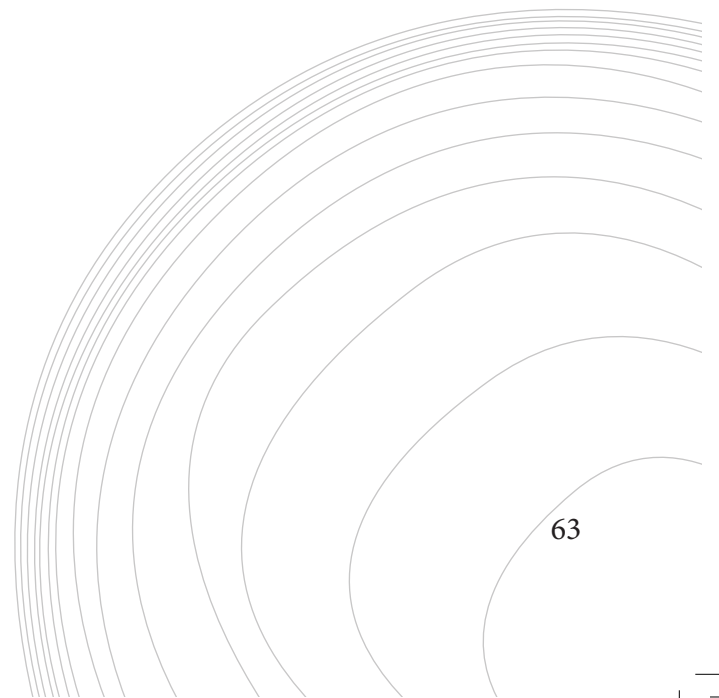


in my first toile i found this fit was successful as well as the lapel folding back the way i wanted.





my sleeve in my first toile was not successful due to there being too much excess in the arm hole.
i took this in through the front side seam and redrafted my armhole.

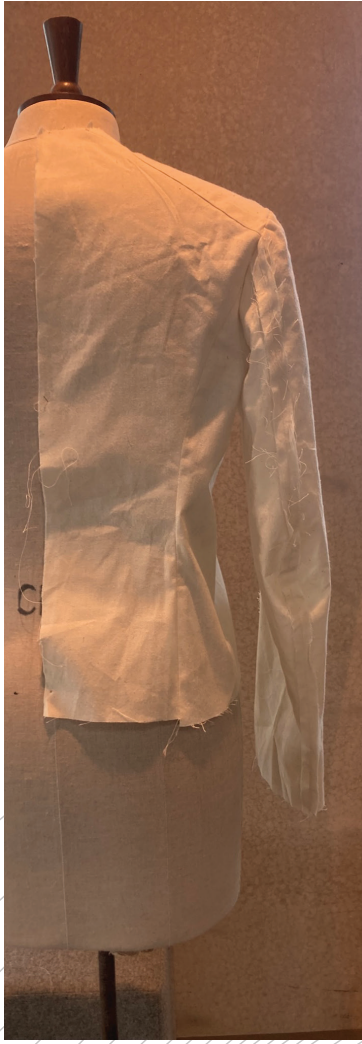




in my second toile my sleeve was fitting much better. here i also decided to move the front dart into the side seam as it was so close.

Final toile







Front



In the final garment i pad stiched the collar and lapel

Final garments and tailoring techniques

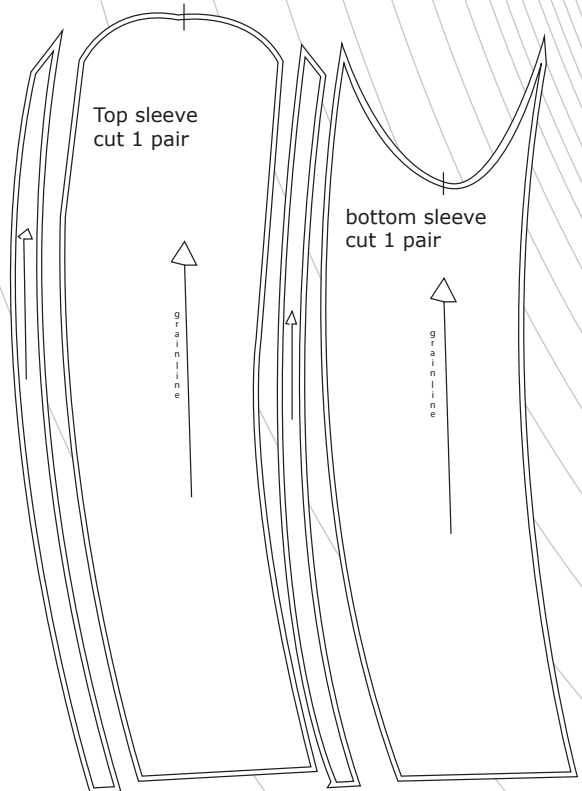
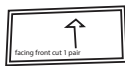
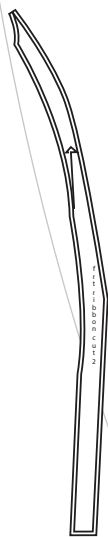
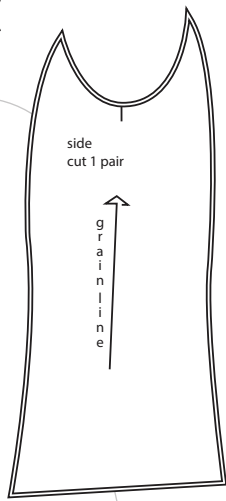
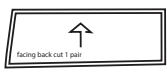
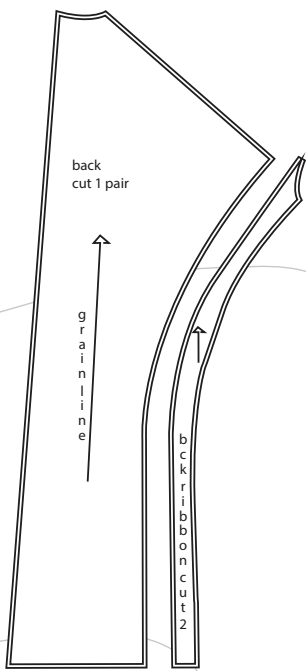


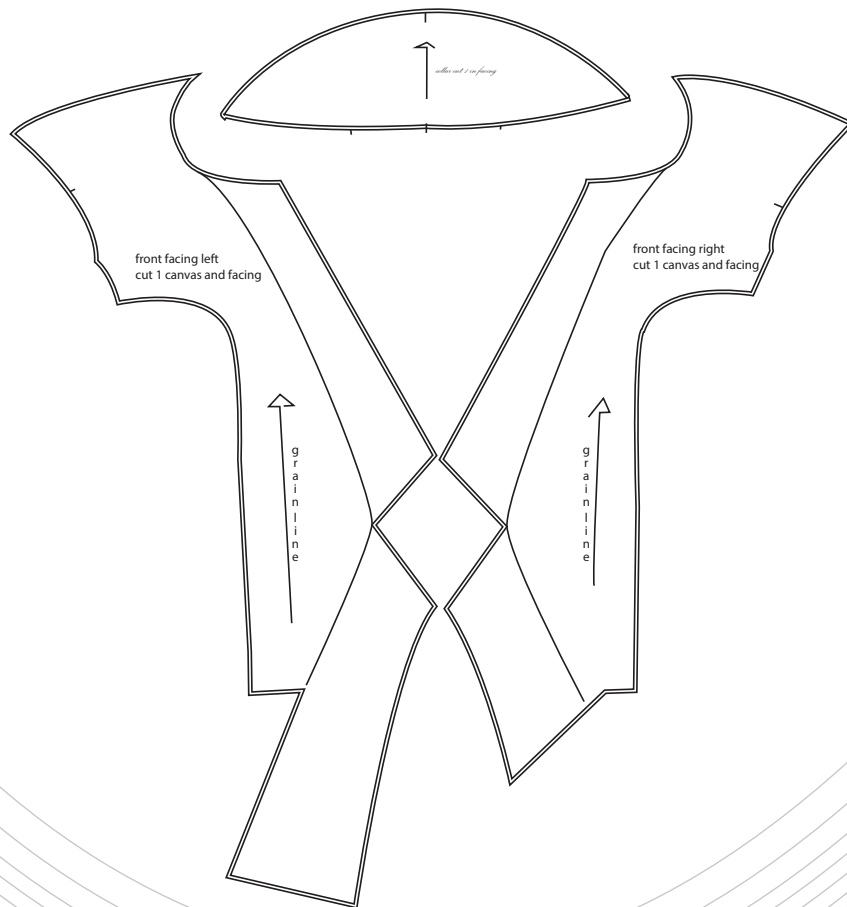
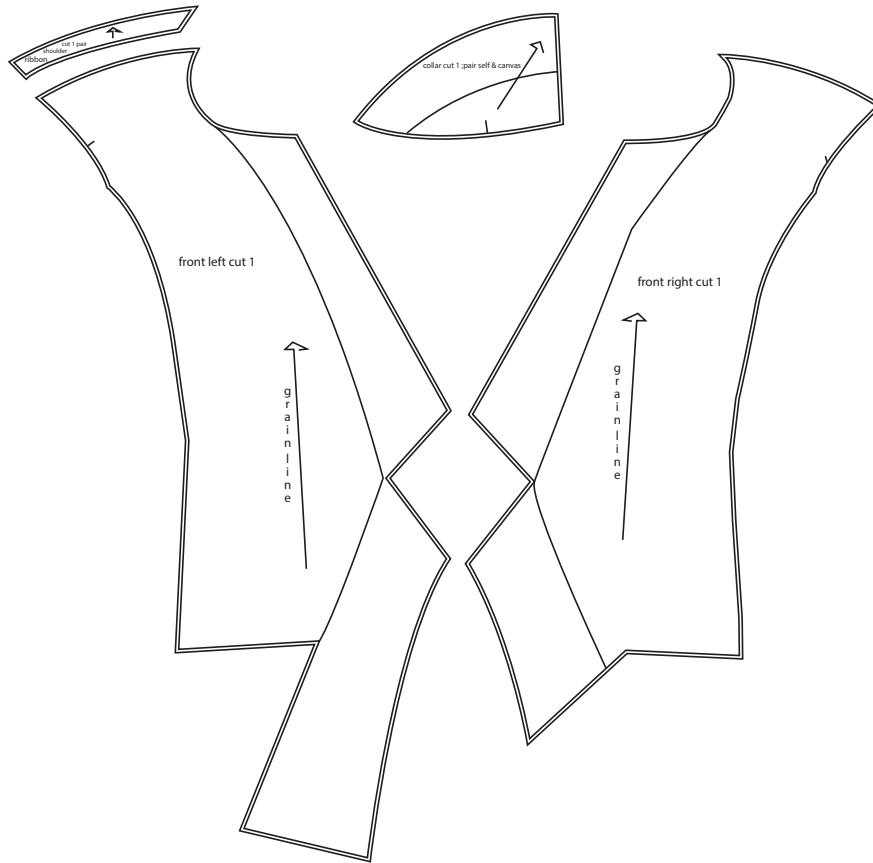


Back



Final Patterns





Front

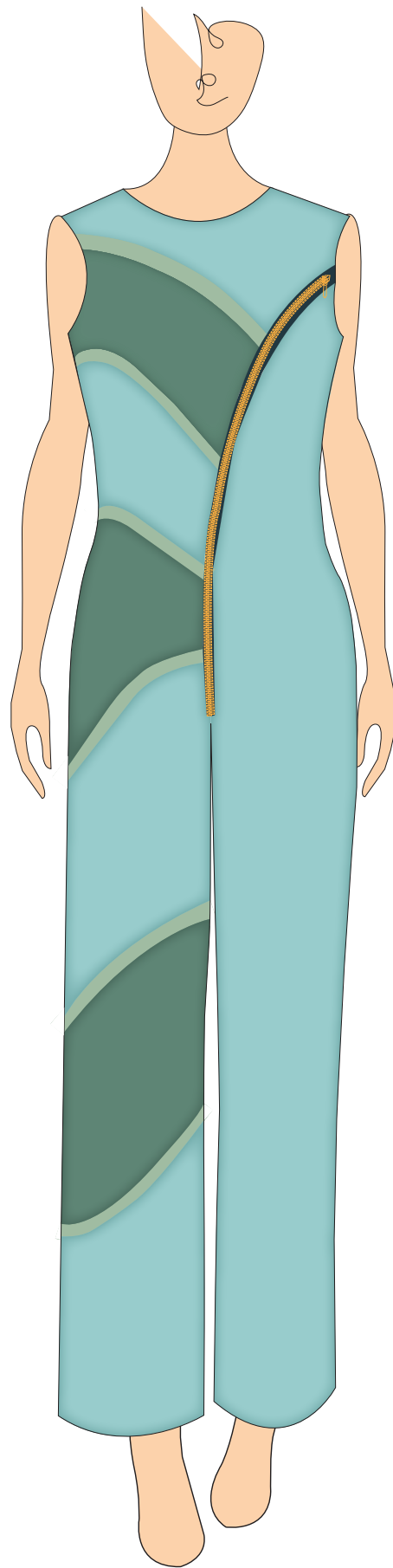


Look 3; Final finished look

Back



Look 4







In my first toile i was check the fit of the jumpsuit. Ensuring there was enough room in the crotch.

I also wanted to ensure the the front center seam was sitting right before i put in the zip to ensure any issues that could arise would be due to the zip and not the pattern.

Look 4; First toile



Second Toile

In my second toile i inserted a zip to ensure i could curve the zip the way i wanted.
I found this was successful just requires alot of pressing to ensure the seam would sit flat.
I then also decided i wanted the back of the garment to mirror the front so flat pattern cut the changed and toiled them to ensure the garment was still siting right.



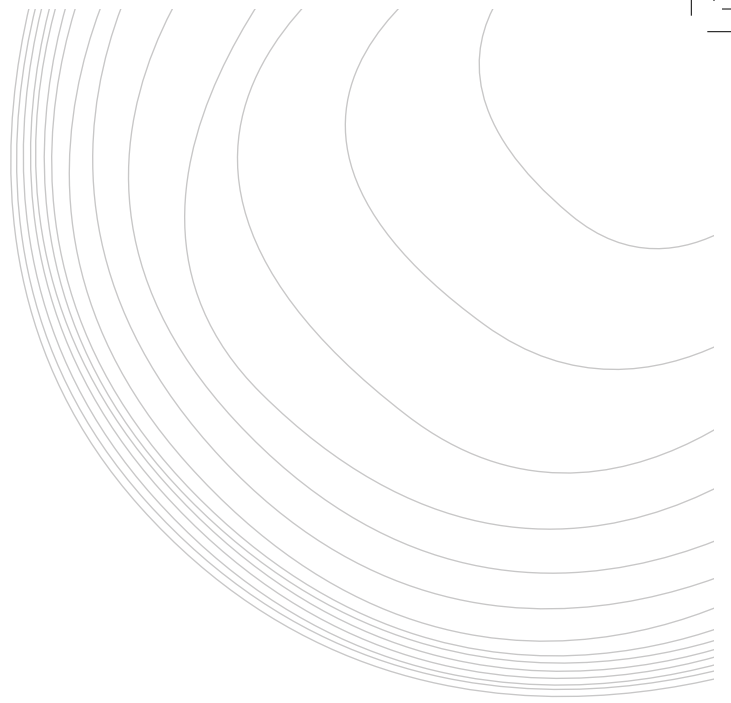




To get the shape of the ribbons i draped them on the stand first over my last toile of the jump suit. I then marked the ribbon in with a pencil and then translated it to my pattern.



Third toile



In this toile i found that the leg ribbons were very successful but the ones running through the body needed some changes. The top ribbon i found ending in the armhole didn't look throughout so i moved it to run through the side seam and into the back. I felt this made the back look more finished. I also recurved the ribbons going into the back seam as i found then were coming in at different angles.





front

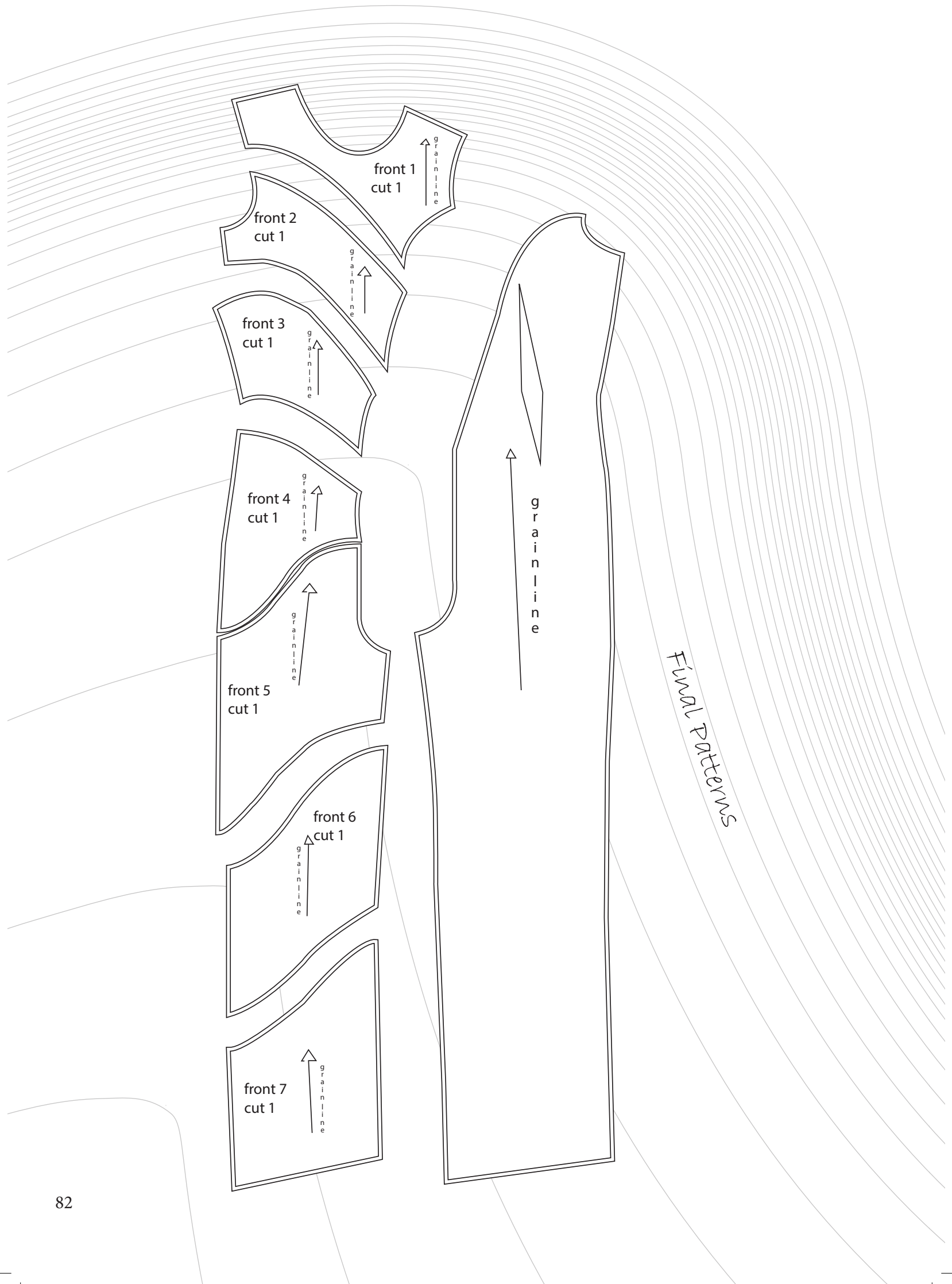
Final garment



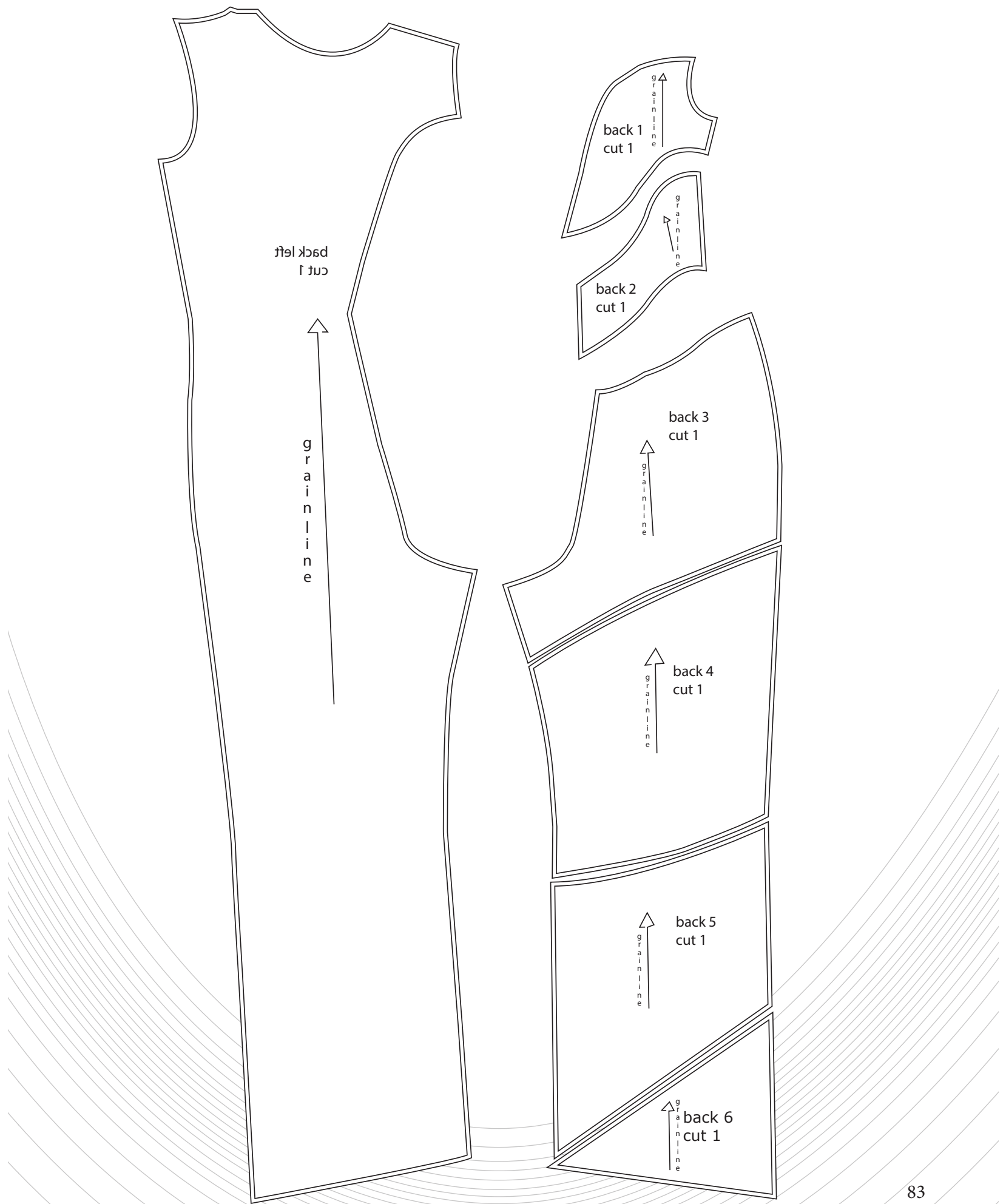
Back

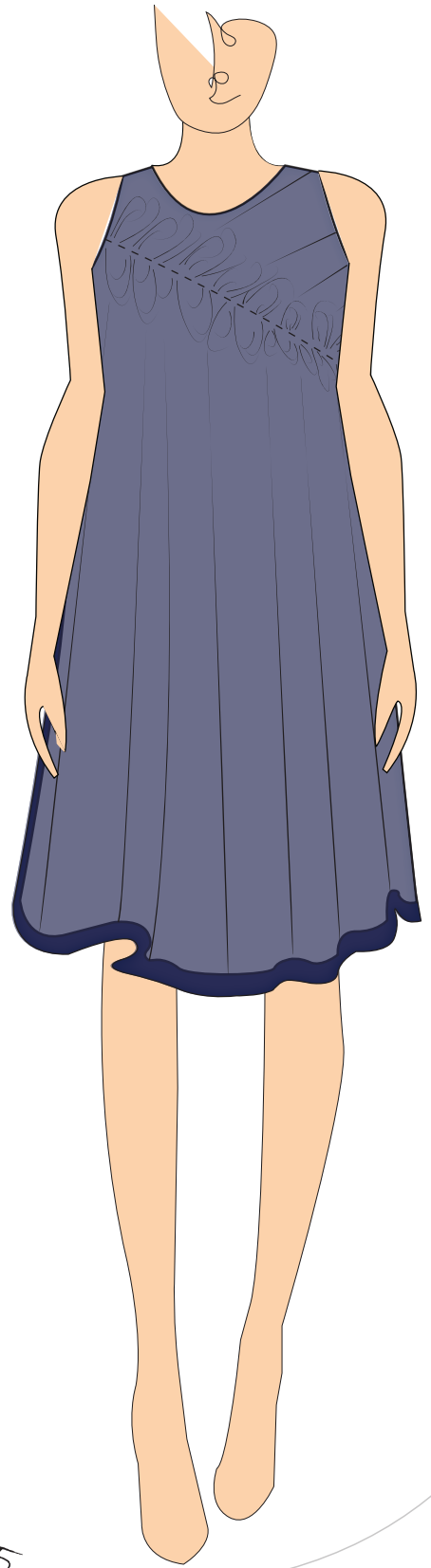


Inside of garment



FINAL PATTERNS





Look 5





Look 5; Toile of dress shape.

In my initial drape i found i added to much flare and fitted the garment too much.
To fix this i took some flare out of the flat pattern as well as straighted the side seams.
In my first toile the fit was much more appropriate for my design.





First toile with drape

In my first toile i found that i didnt use enough fabric in the middle layer.
I also found that the gathers were offset enough.
I found the neckline was too high and also on the flat pattern lowered the neckline.





In my third toile i wanted to try it on a model to see how the drape fell across the bust.
When i did this is made me aware that my neck hole was too small and needed to be opened by minum 2cm all around.
I changed this on the flat.



Third toile



Final Garments

front

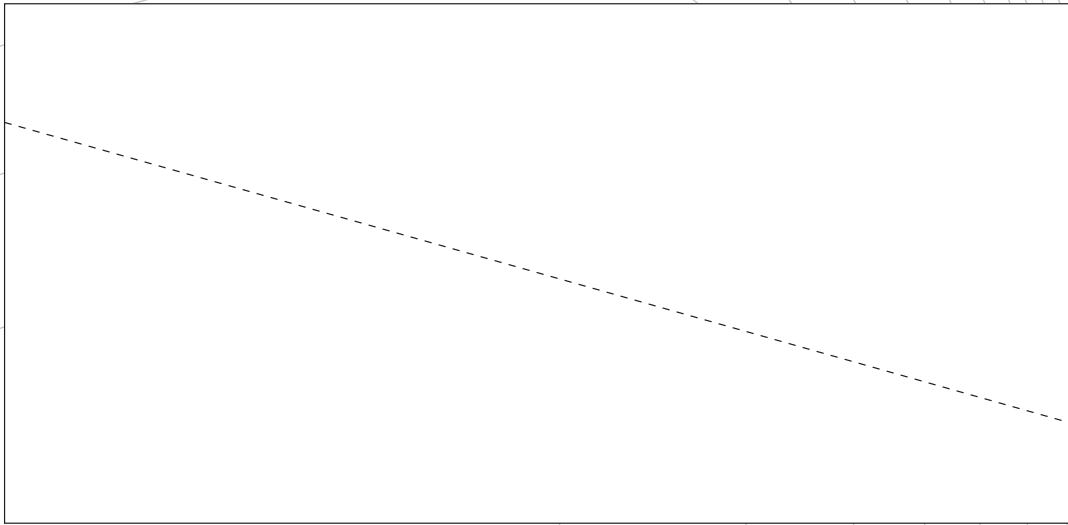


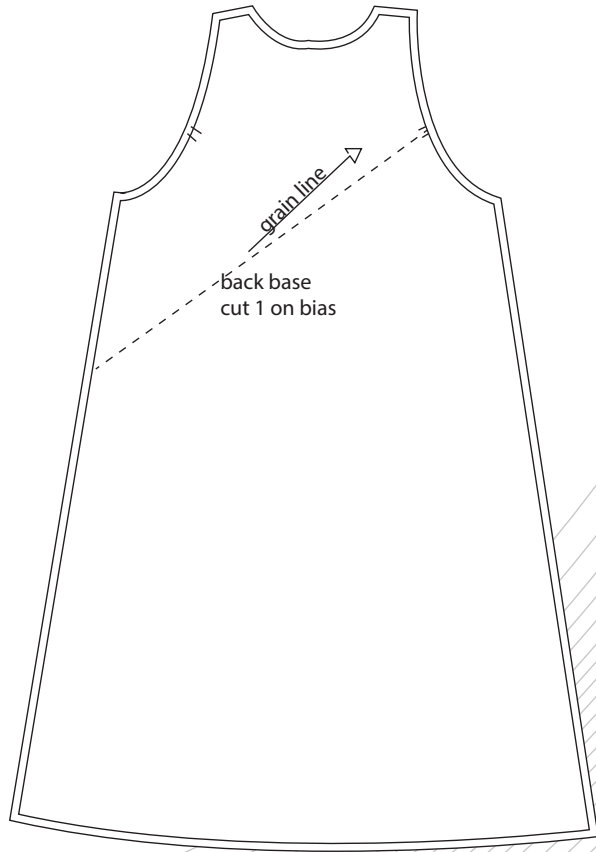
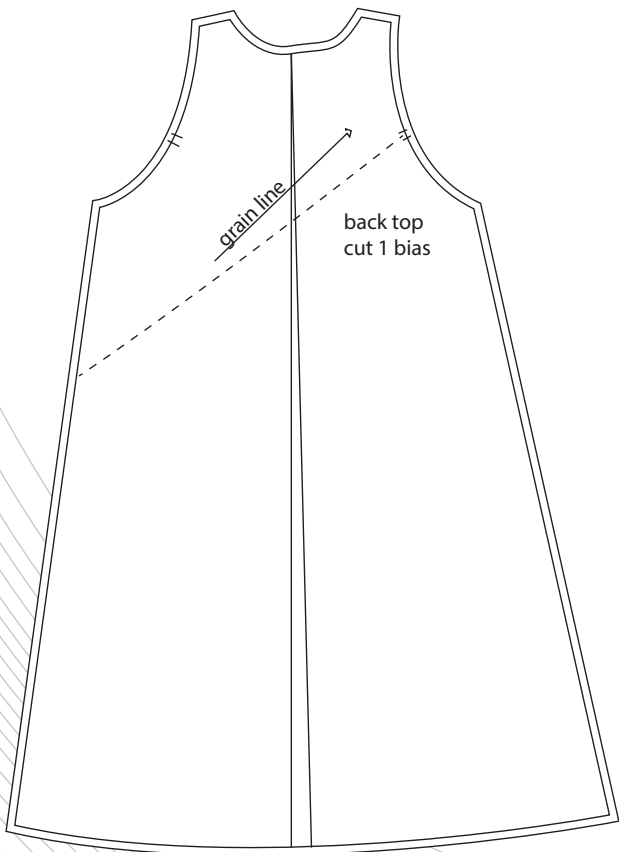
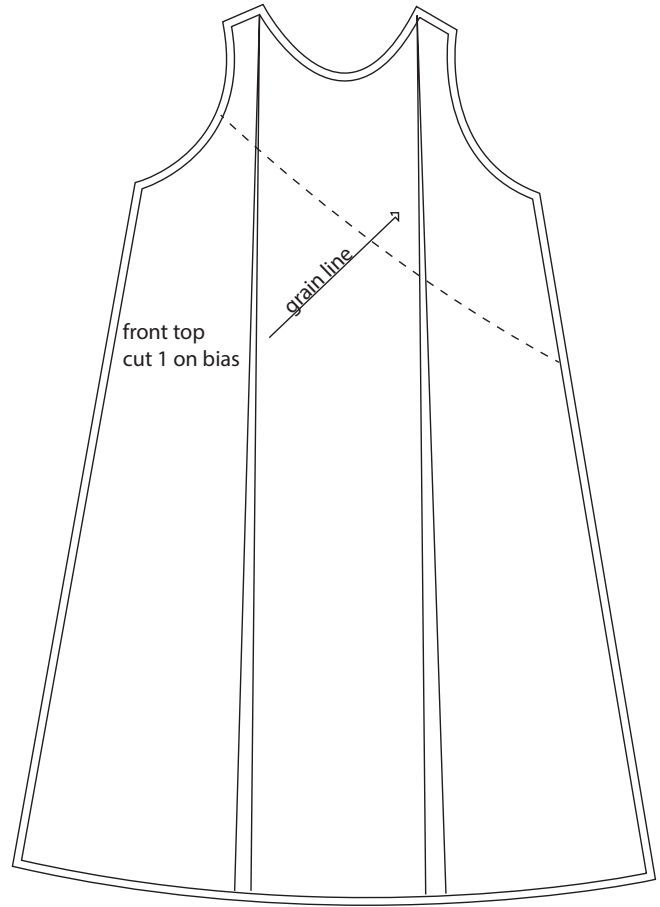
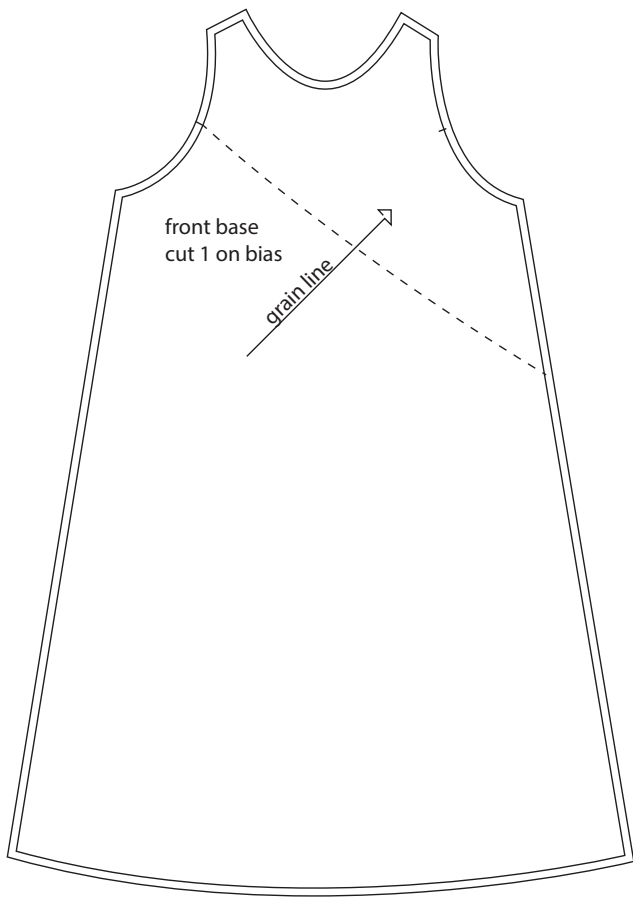
inside of garment

Back



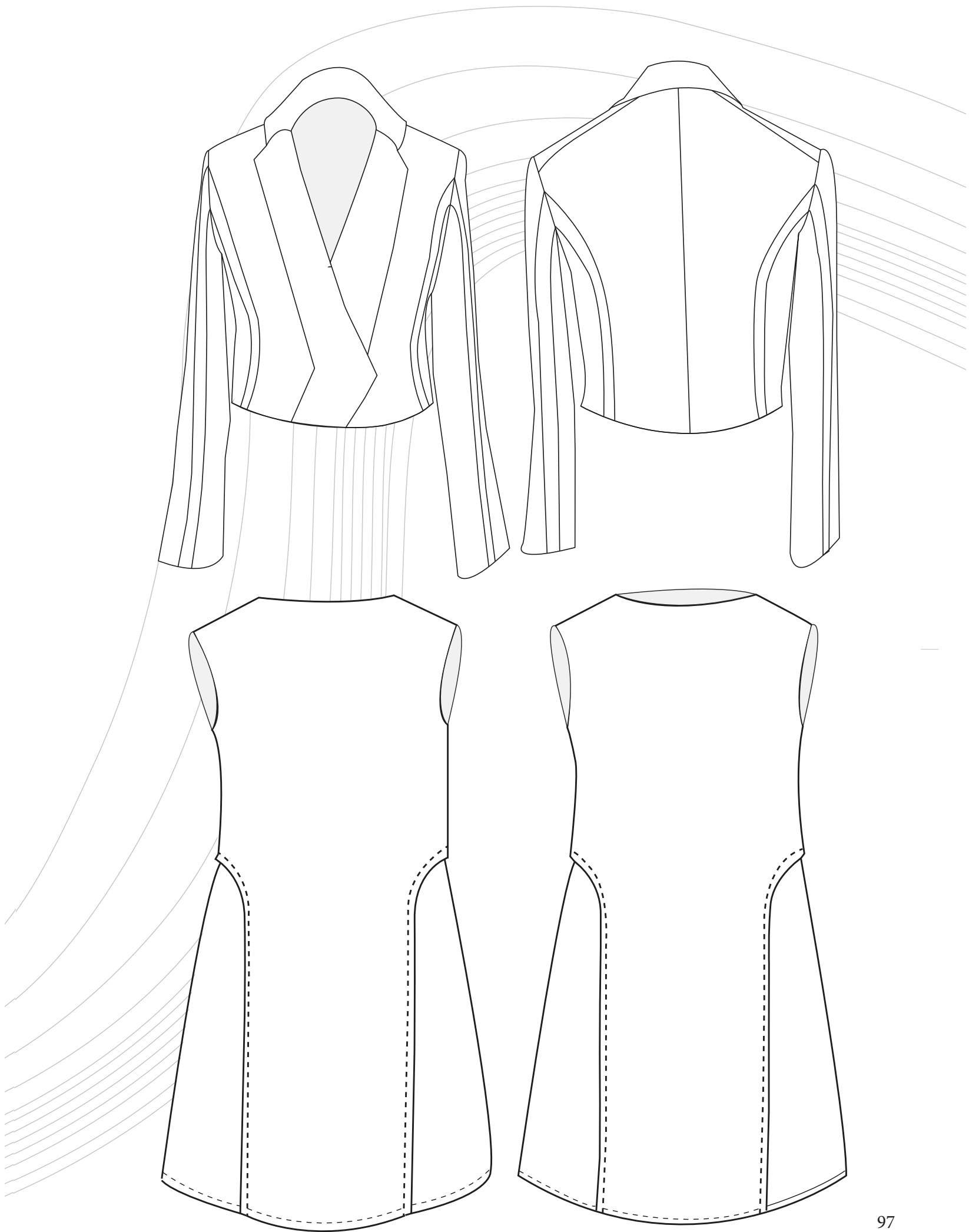
Final Patterns

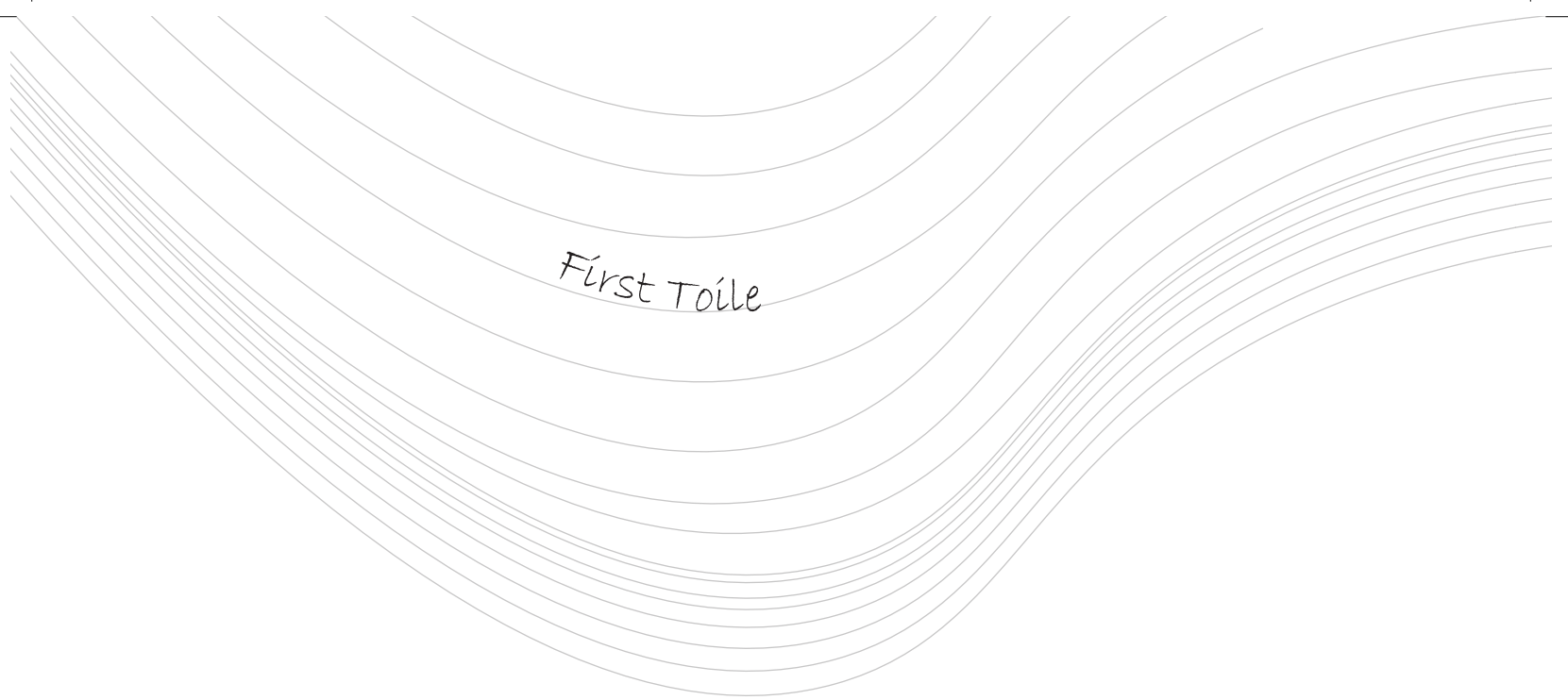




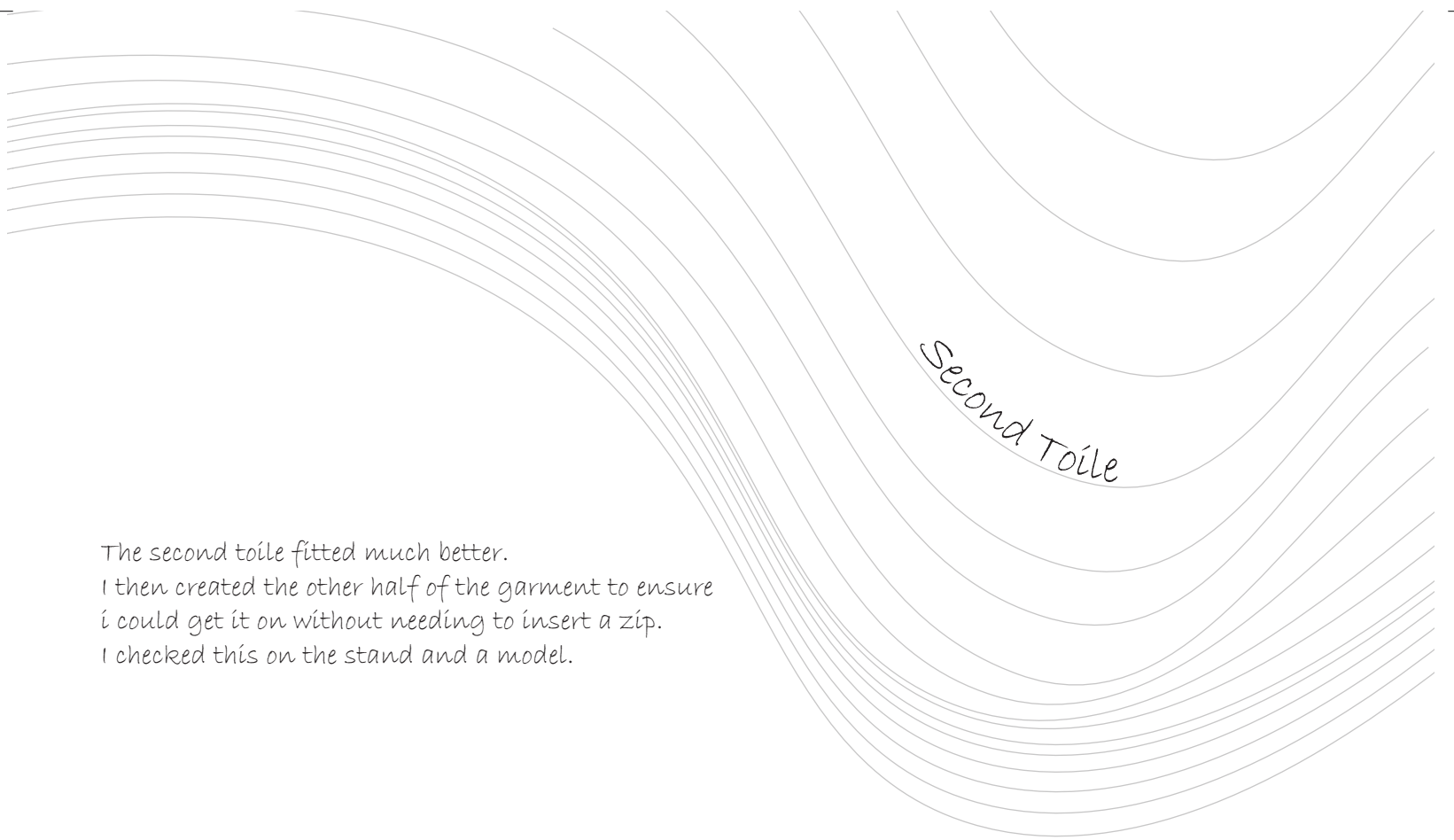


Look 6





In my frist toile i only did half to save waste of fabric.
I found that the fit was to tight and i wanted a loser
shape.
I straightened the seams off on my flat pattern.



The second toile fitted much better.
I then created the other half of the garment to ensure
i could get it on without needing to insert a zip.
I checked this on the stand and a model.



front



inside of garment

Final garment

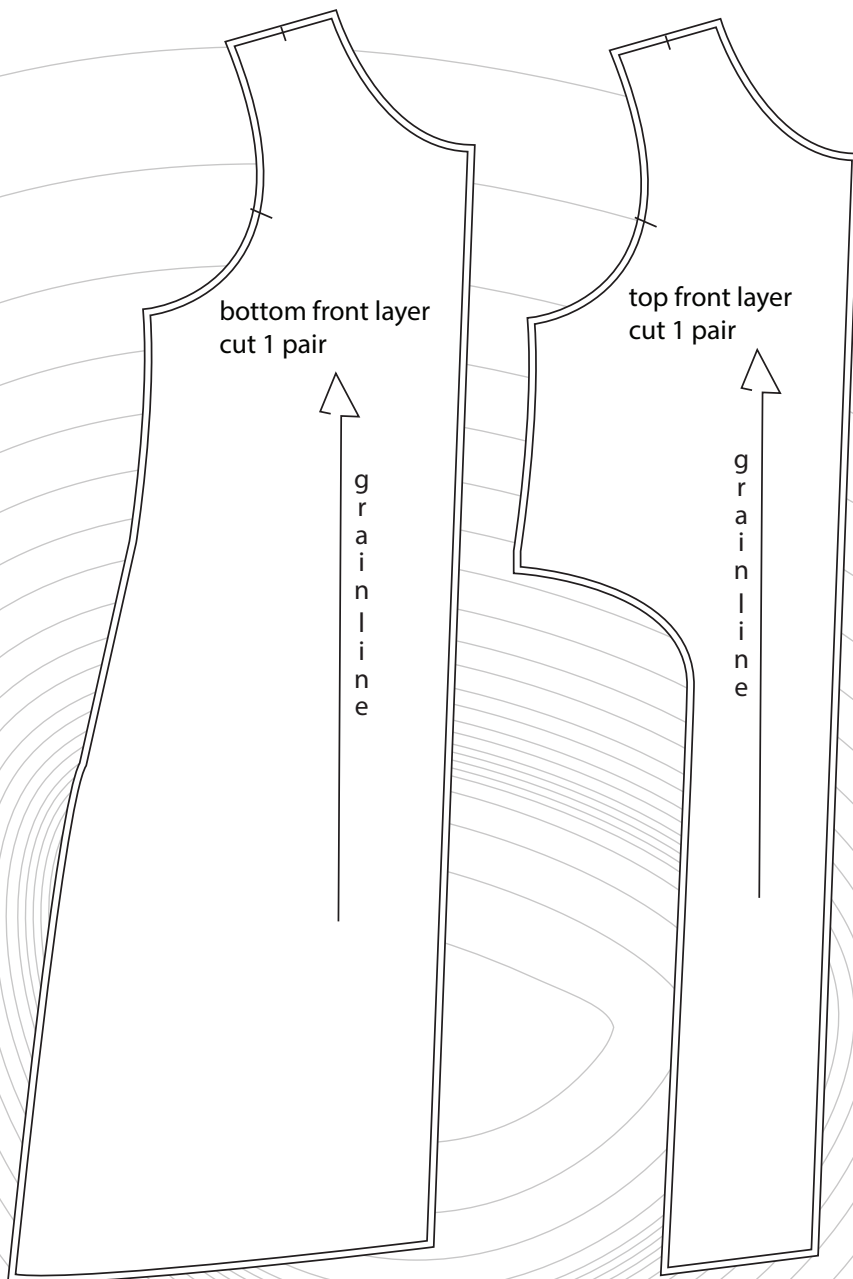


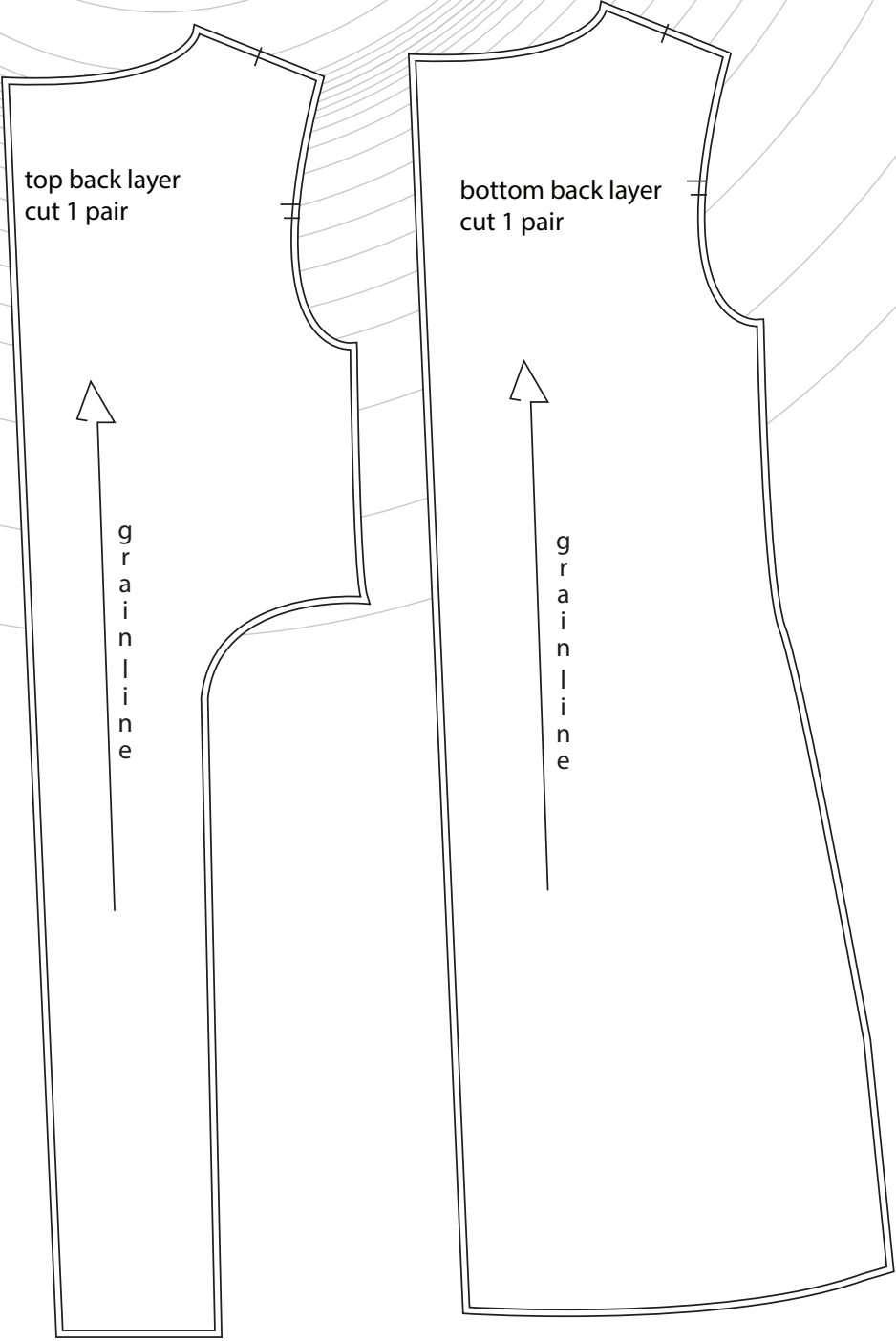
Inside of garment



Back

Final Pattern





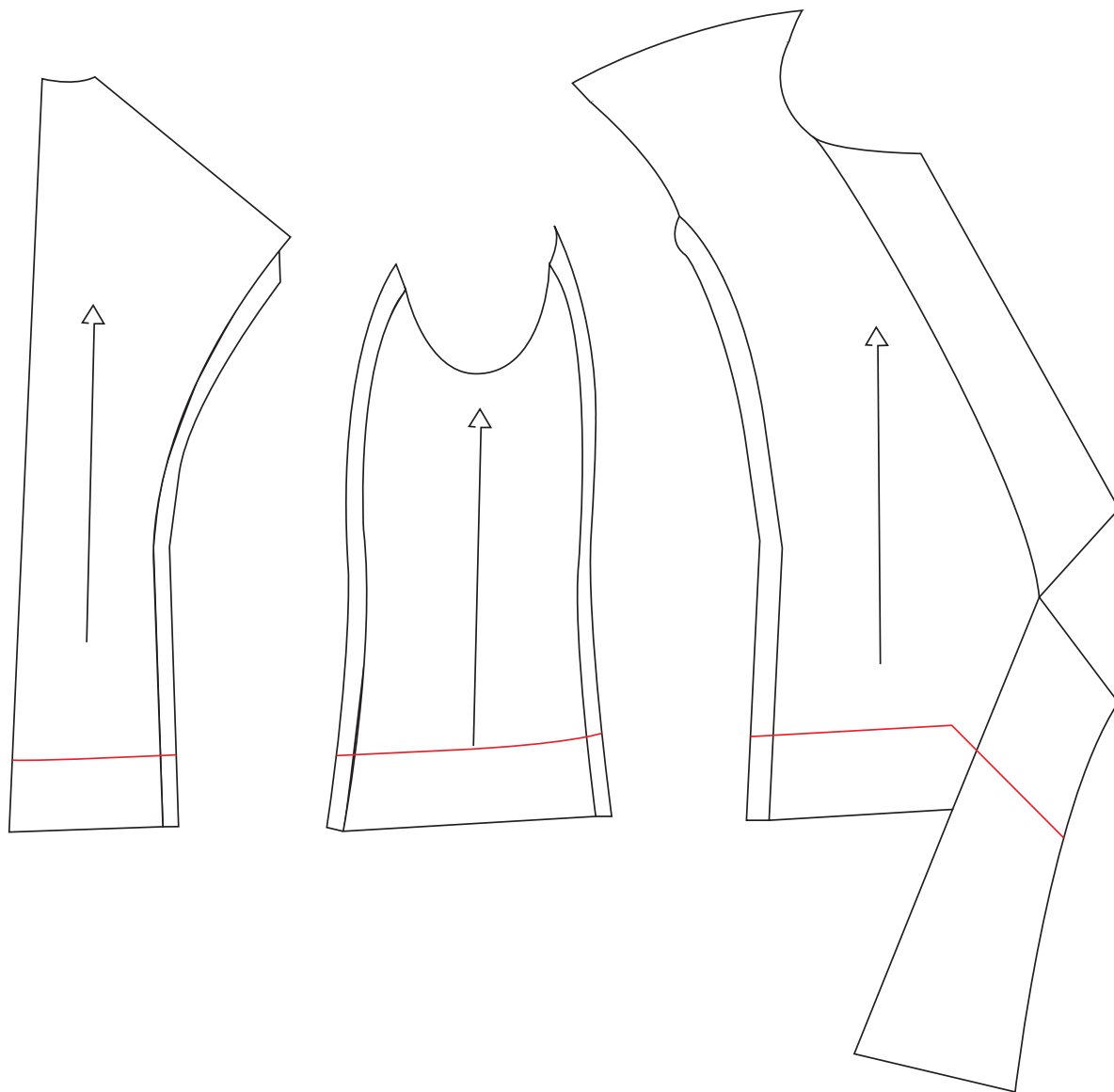
top back layer
cut 1 pair

bottom back layer
cut 1 pair

g
r
a
i
n
l
i
n
e

g
r
a
i
n
l
i
n
e

Look 6; Cropped jacket construction



For my jacket to go with my final look i wanted to use the same pattern from look 3.

The only change i made was to crop the jacket.

I took the hem up by 10cm which is indicated on red in my pattern diagram above.

This measurement i got from putting my jacket toile on top of my dress and measuring the distance i wanted it to fall at.



front



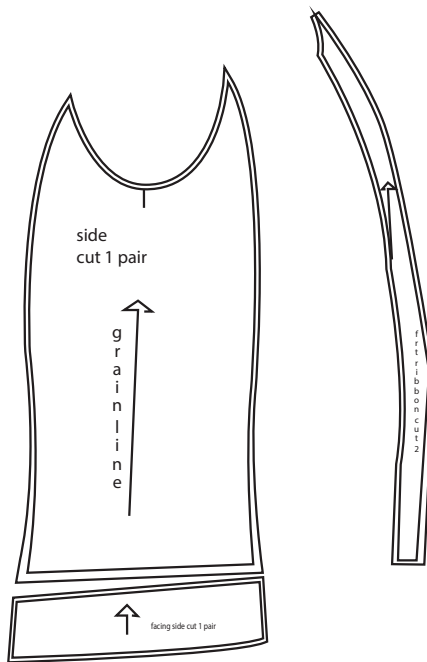
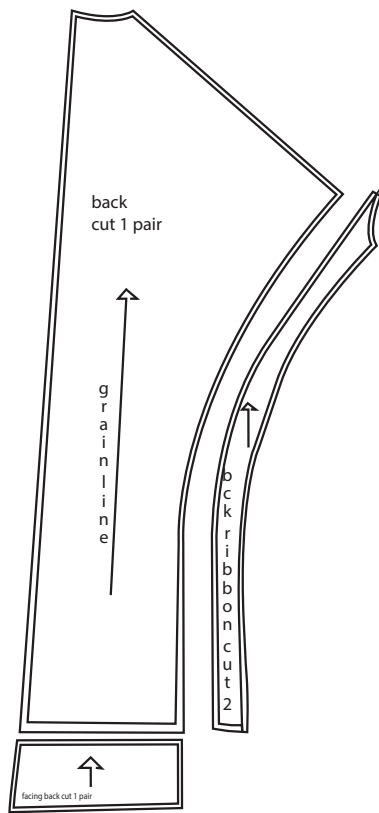
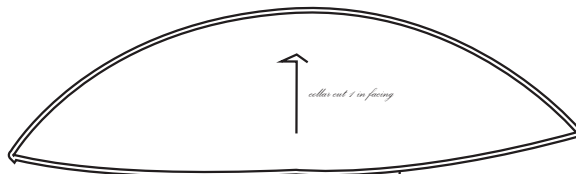
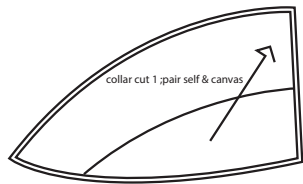
Final Cropped Jacket



Back

Inside of garment





Final Pattern

Top sleeve
cut 1 pair

grainline

bottom sleeve
cut 1 pair

grainline

front
cut 1 pair

grainline

front facing & canvas
cut 1 pair

grainline

facing front cut 1 pair

Look 6; Final Finished Look



Front



Back