

PRE COLLECTION
EARLY FITTINGS
STARTING POINT
SUCCESSFUL OUTCOMES



FOUND CROCODILE EMBOSSED BLACK LEATHER AS BAG, DRAPED OLD NH2 DRESS AS SKIRT

For collection find garments.



Pin trousers
make slightly
wider.

Continue coat development.
Heavier fabric?



Further development of the
collar. Nice cutting
shape → sharp
structure.

Further development of
the "faja"
- implement in design.



ass out! fab!



Successful use of straw → continue

1

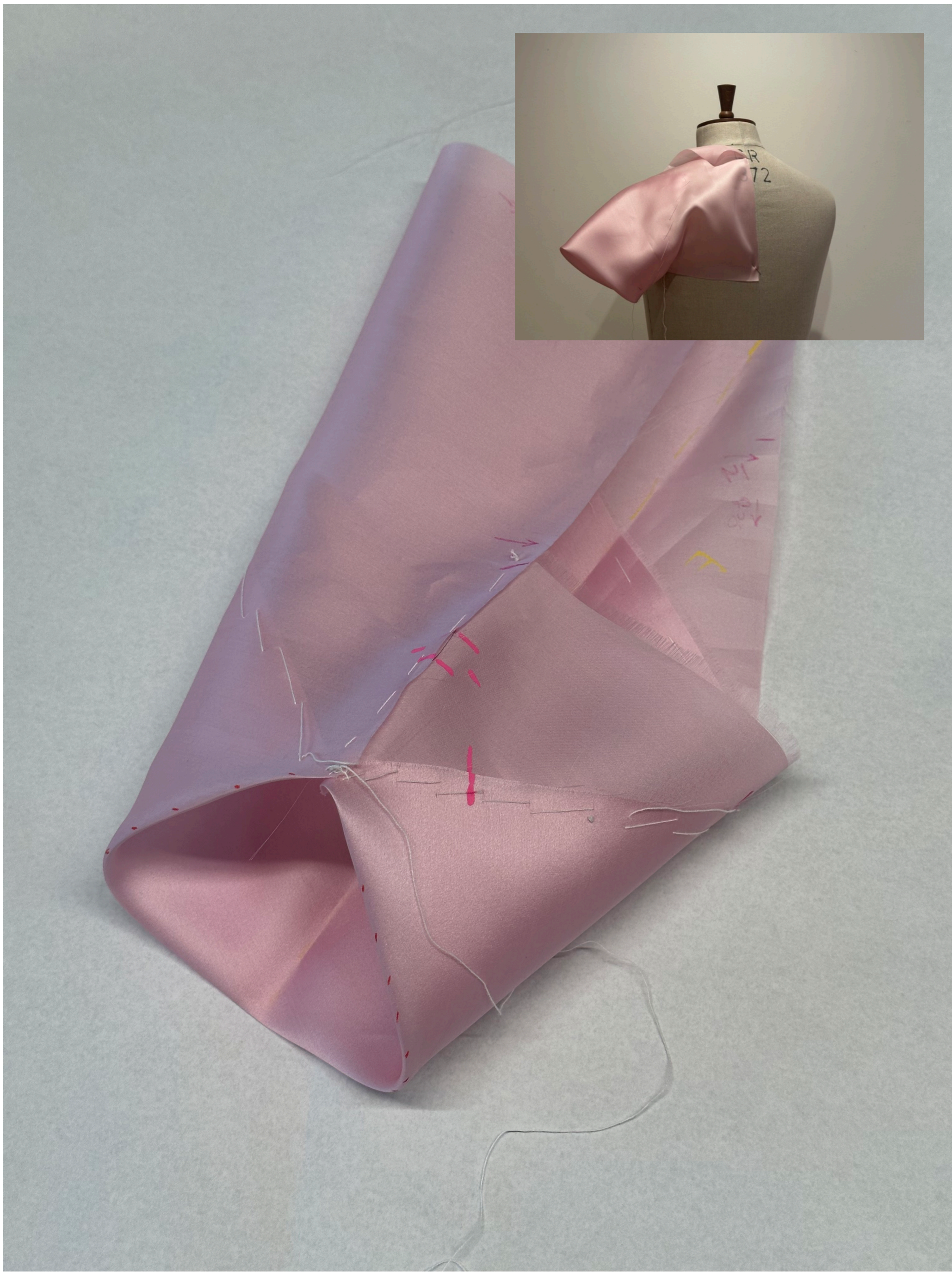


2



3



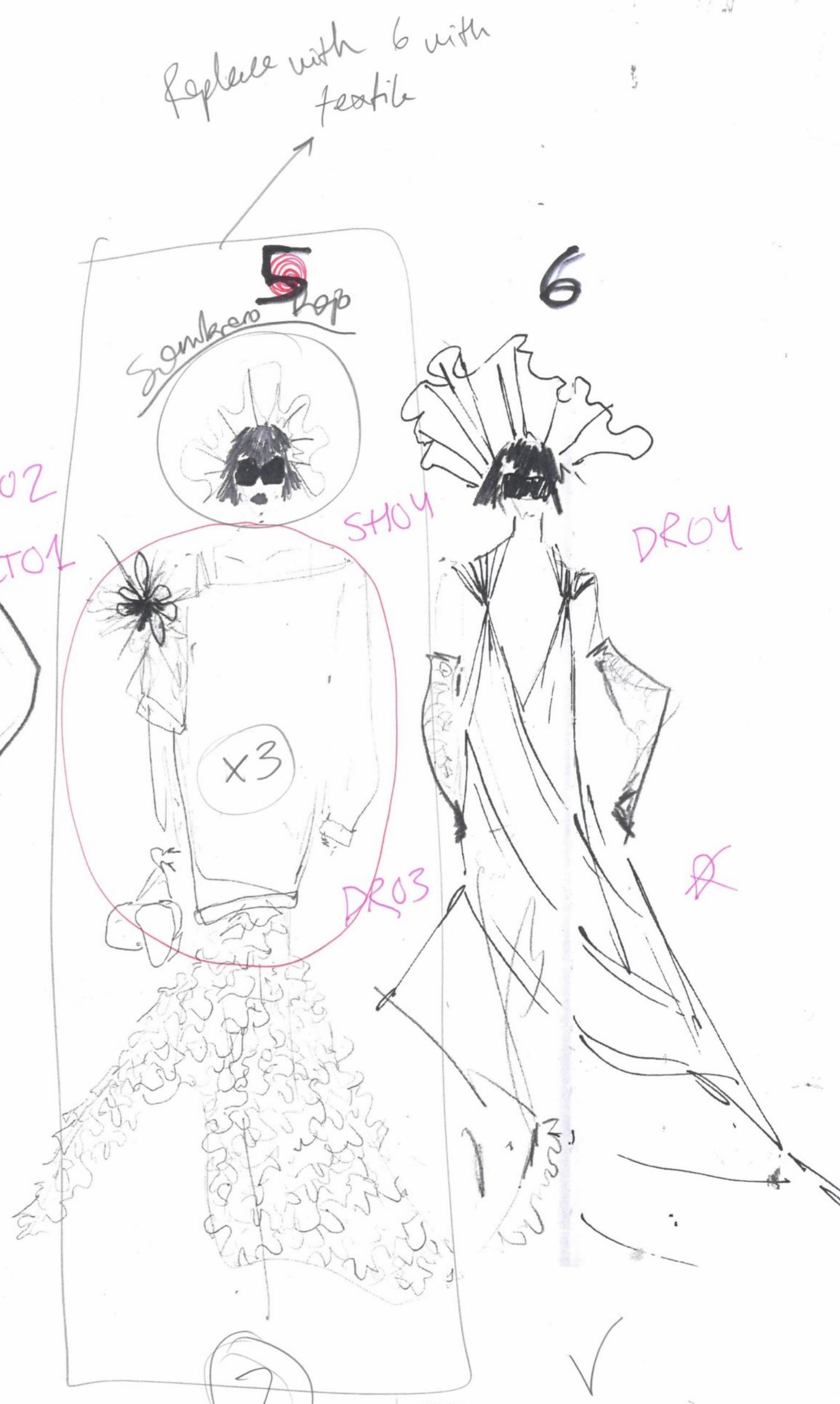
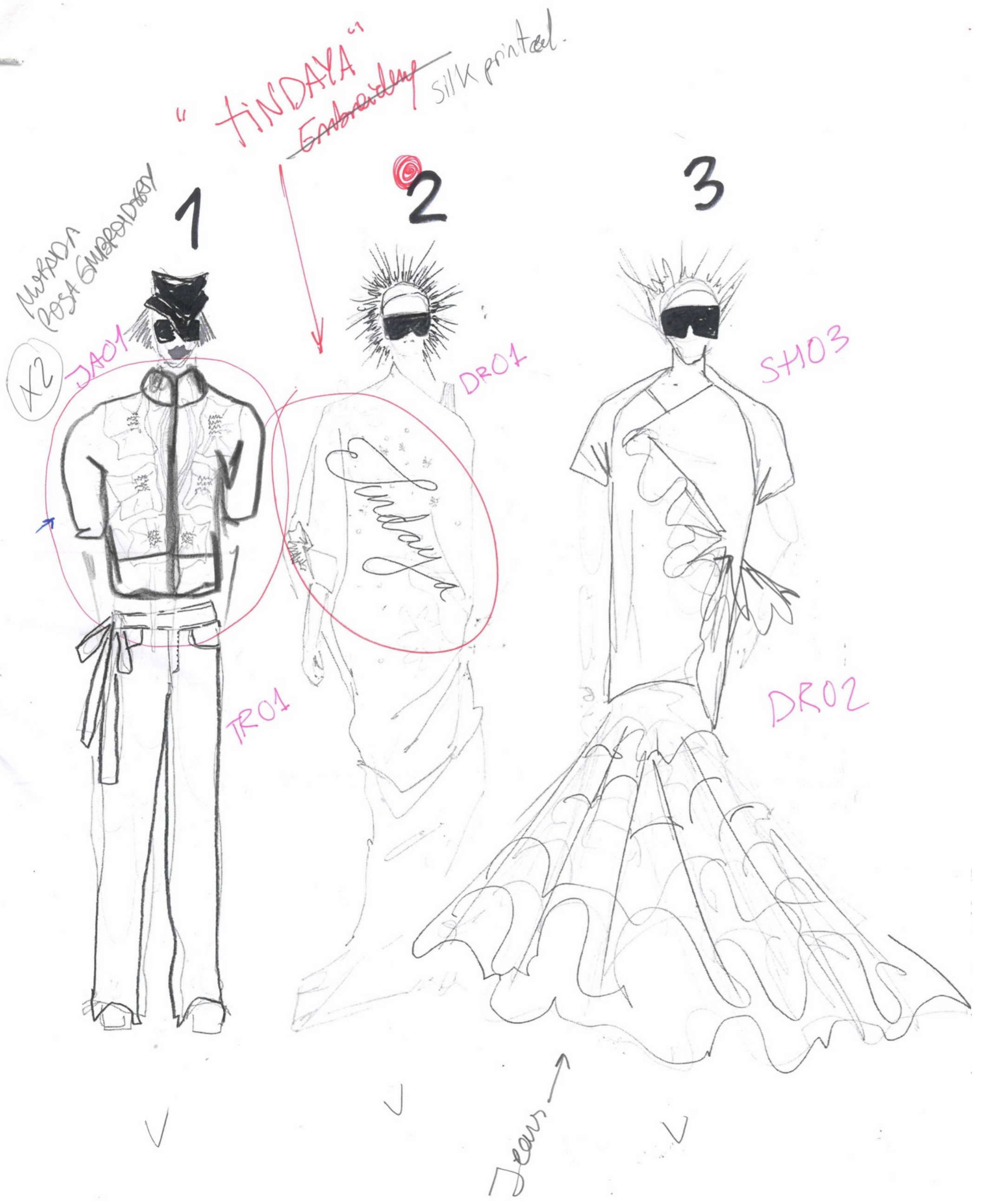


(LEFT IMAGE) SLEEVE SAMPLE IN SILK GAZHAR, BOUNCY, LIGHT AND STRUCTURED. SLEEVE ENGINEERED FOR SEAMLESS TRANSITION BETWEEN SELF AND LINING. (RIGHT IMAGE) SLEEVE FLAT FOR PATTERN CONSTRUCTION. (SMALL IMAGE) SAMPLE PLACED ON THE BODY.





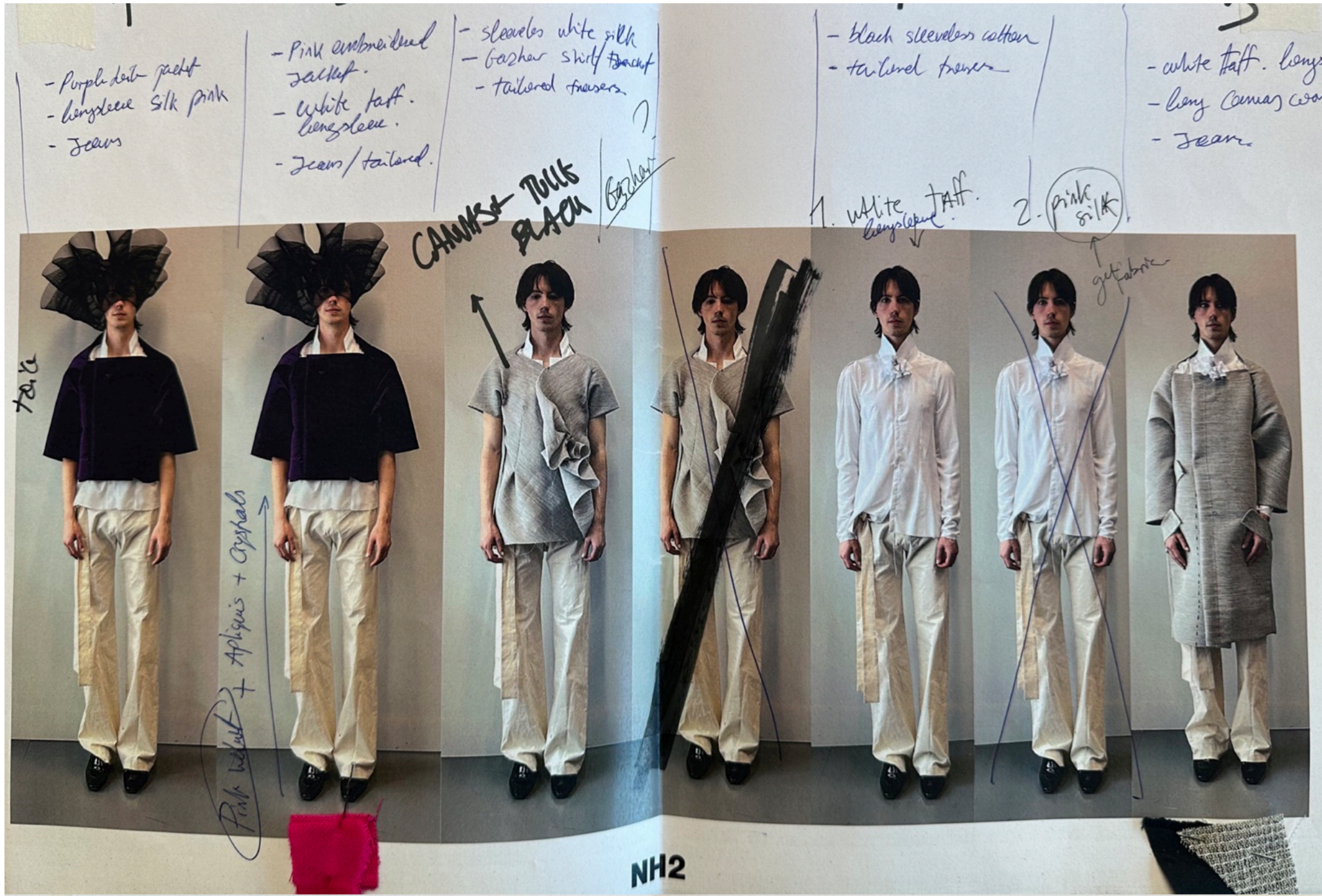




WORKING LINE UP

NH2

WORKING FINAL LINE UP



DAY 1 (12/05/25)

LOOK #1



JOHN
TAILORED TROUSERS
SLEEVELESS SHIRT
STRAW HAT
PORTFOLIO BAG
BLACK YSL SHOES

LOOK #3



SEVEN
TAILORED JEANS
TAFFETA SHIRT
VELVET PURPLE JACKET
STRAW HAT
BLACK YSL / BOW GOLD

NH2

LOOK #5



JOHN
CRINOLINE HAT
BLACK LONG DRESS
BLACK YSL / BOW GOLD

LOOK #8



SEVEN
CRINOLINE HAT
PETROL DRESS
BLACK YSL / BOW GOLD

DAY 2 (13/05/25)

LOOK #2



ALEK WELMA
-TAILORED TROUSERS
MARIQUITA VELVET JACKET
SLEEVELESS SHIRT
STRAW HAT
GOLDEN BOW SHOES
JEANS

LOOK #4



TOMIQUE JAMES
TAILORED JEANS
TAFFETA SHIRT
CANVAS COAT
STRAW HAT
BALENCIAGA BLACK HEELS
TROUSERS

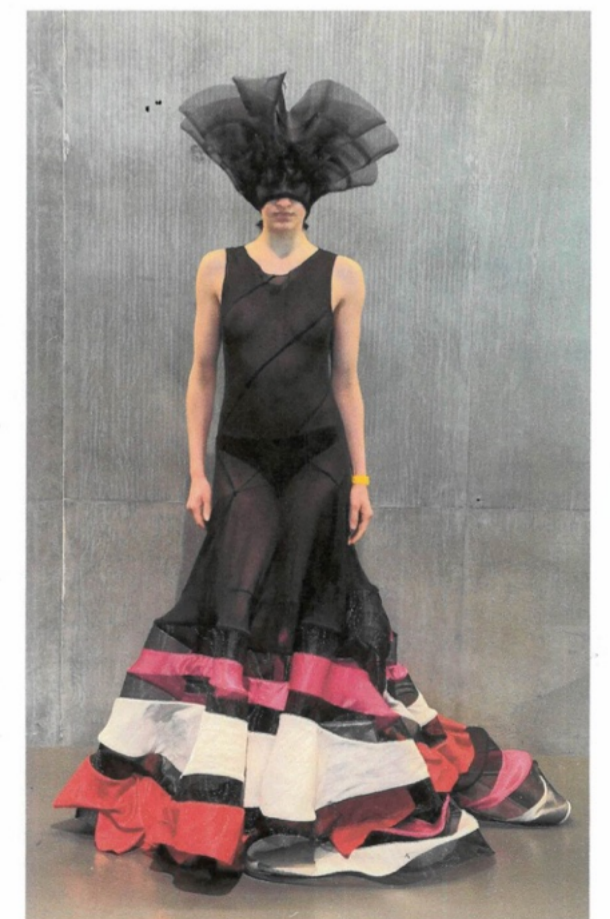
NH2

LOOK #6



TOMIQUE WELMA
CRINOLINE HAT
BOUQUET DRESS
BALENCIAGA BLACK HEELS
labios perf.
ma c verde + mara'n
+ linae negro.

LOOK #7



ALEK JAMES
CRINOLINE HAT
BIAS BEAST
ALEKS BLACK BOOTS
TROUSERS
labios = John negro



Sleeveless shift.

get rid of
the peak.



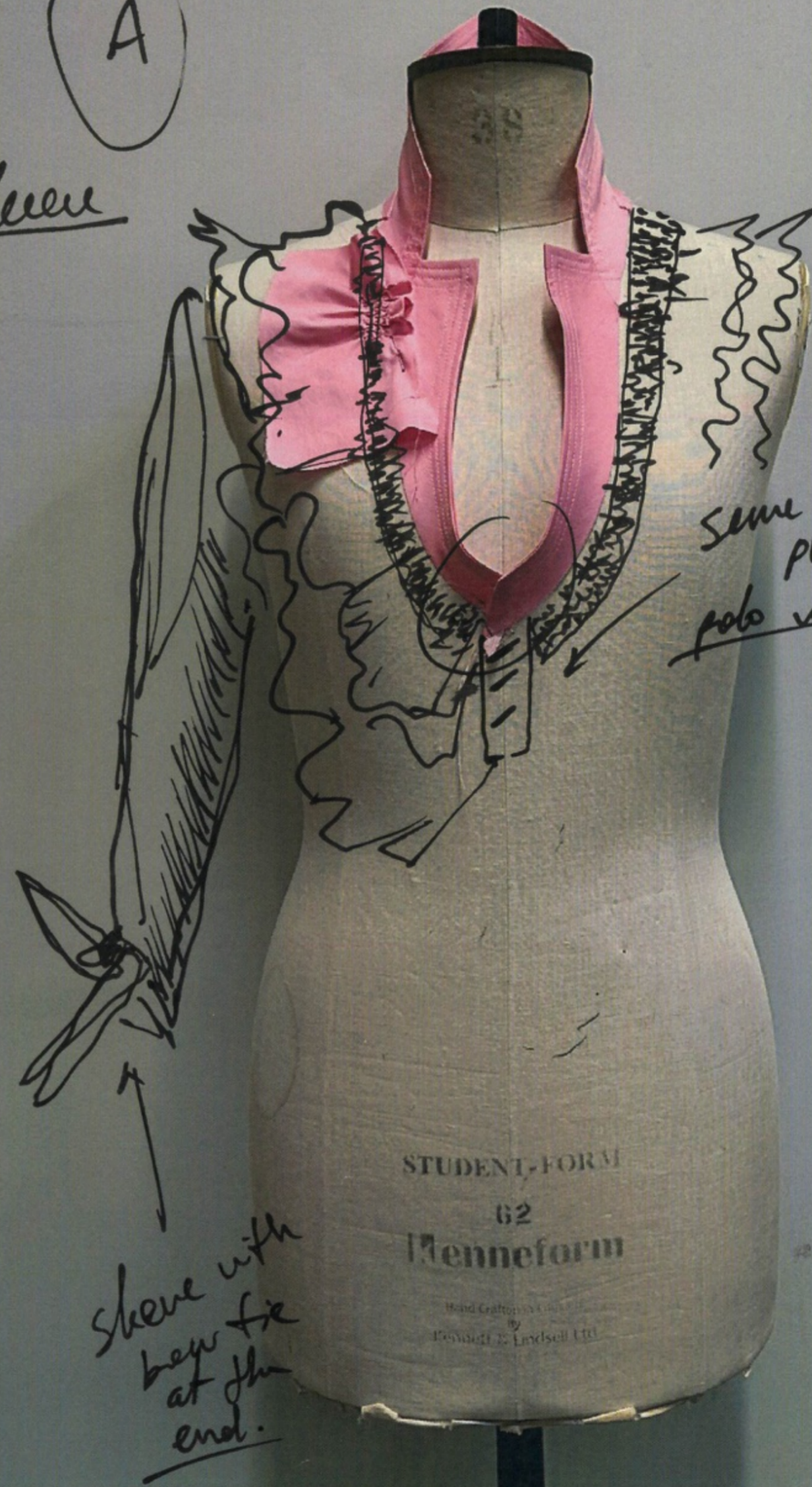
overlapping

(A)

sleeve

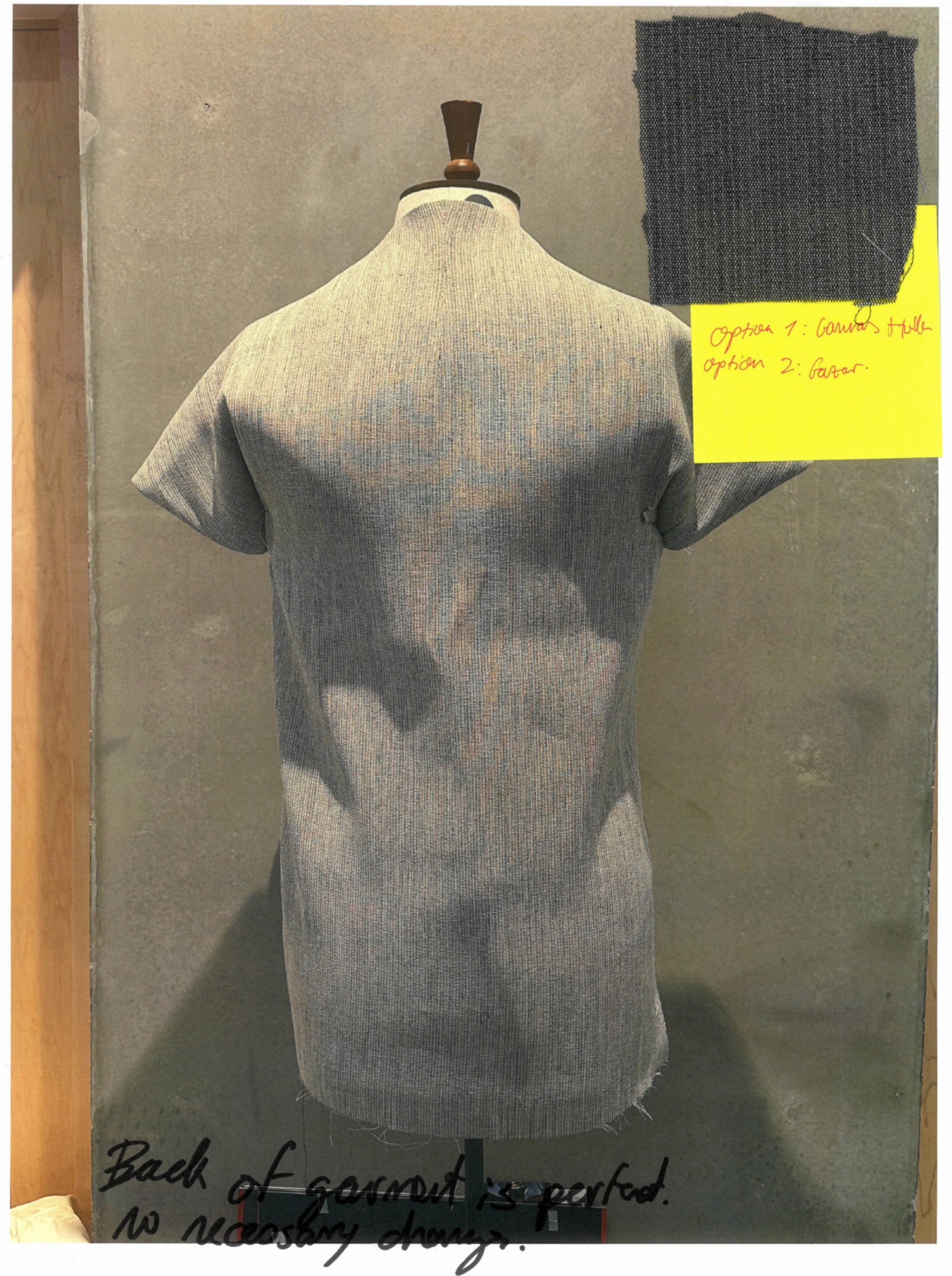
(B)

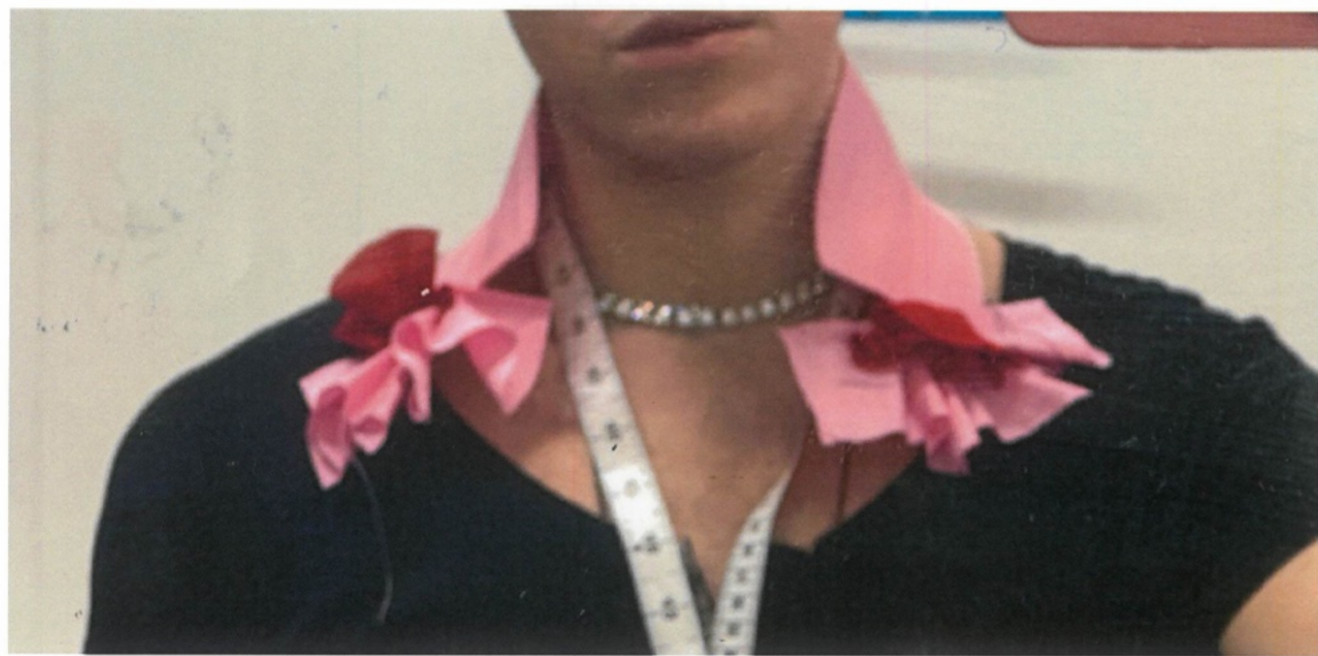
skirts



same set of
placket
poko ribs.

shere with
baw fix
at the
end.





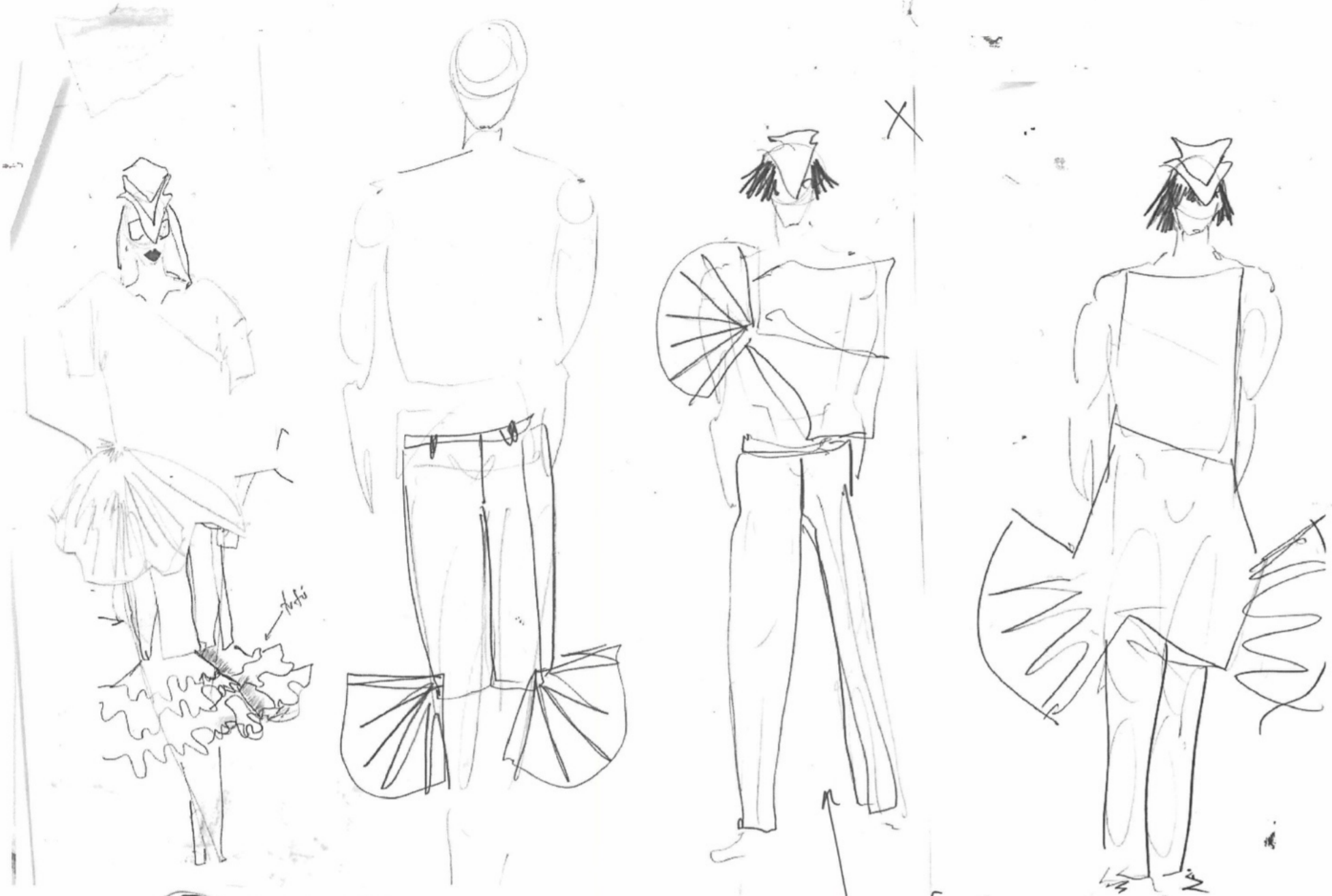
sample development of collar
- try on long sleeve.



shorten
sleeve
slightly

take in
a little
bit.

toile #1 - perfect fit. (no need for adjustment, just hem).



Fit trousers

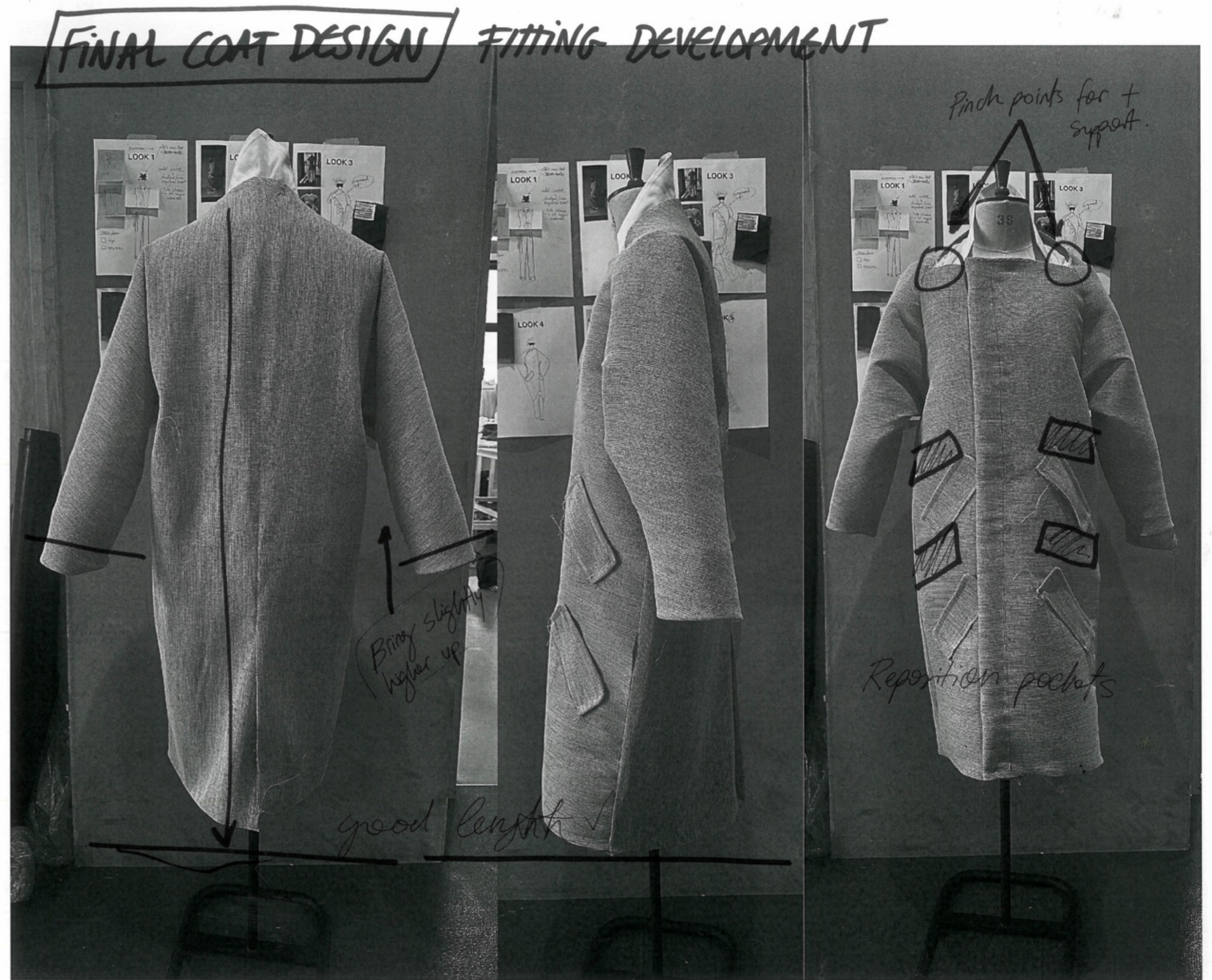
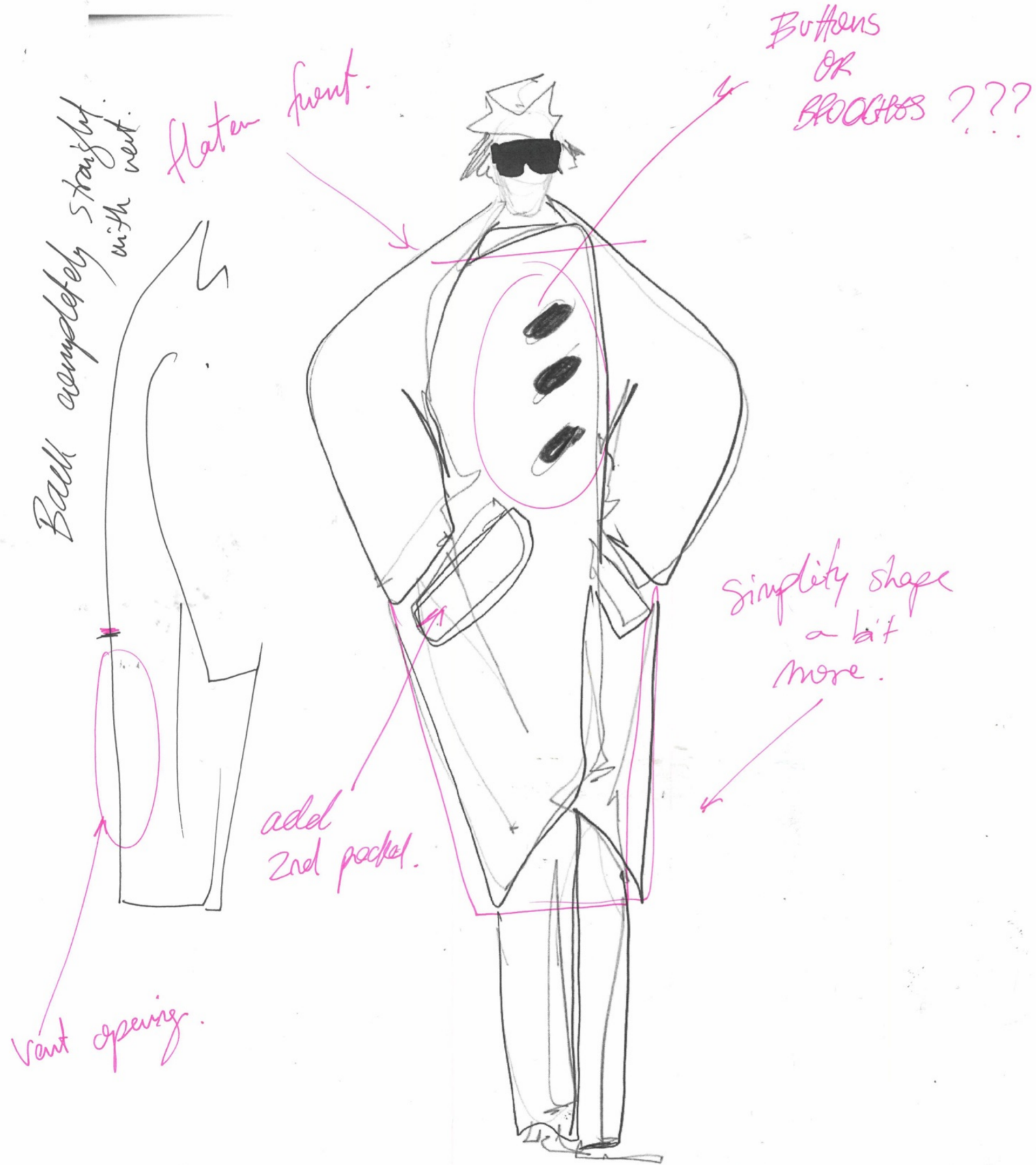
Sealayer denim
cotton

Suiting
wool

Straight leg with some
Room.

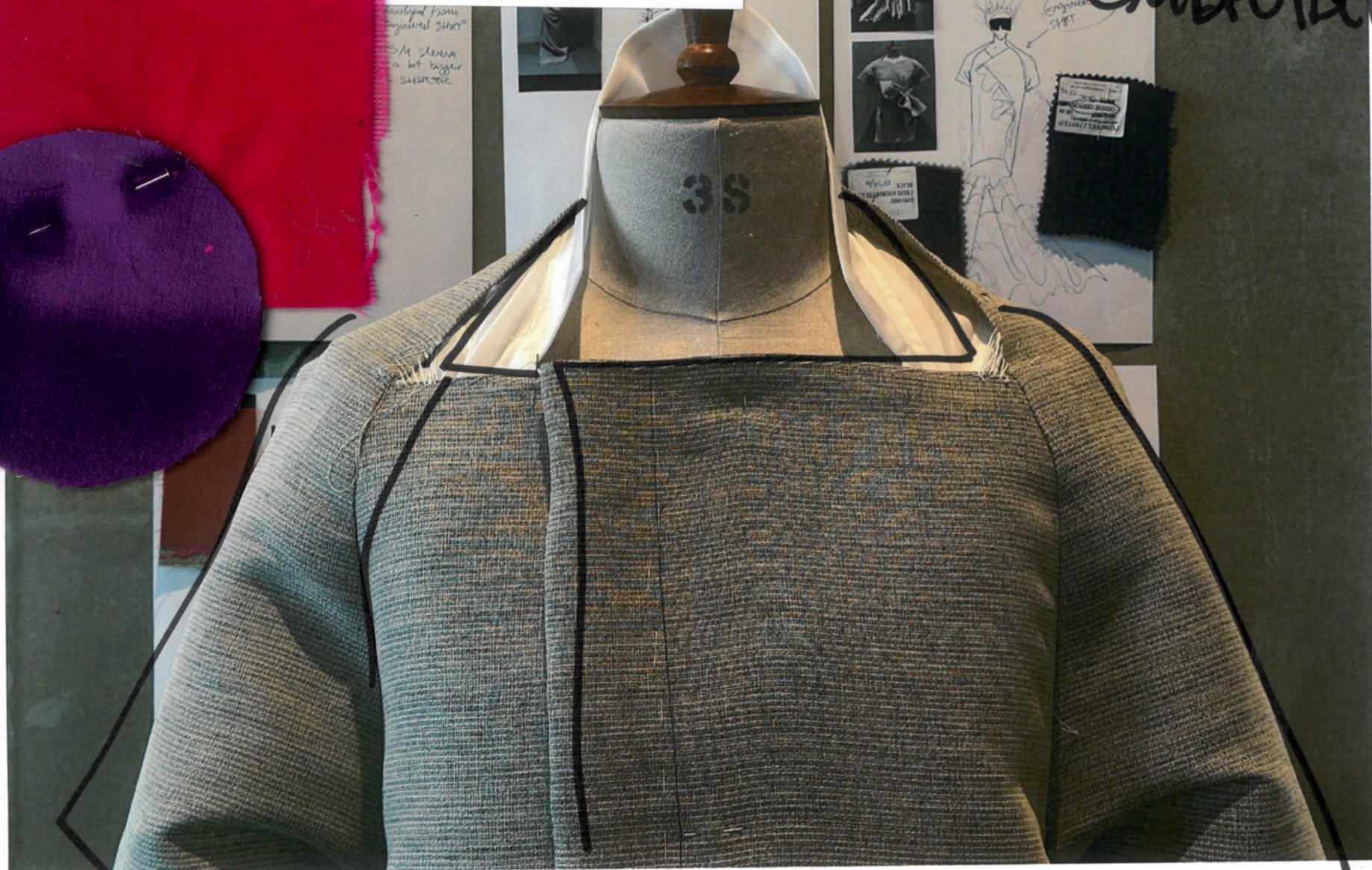
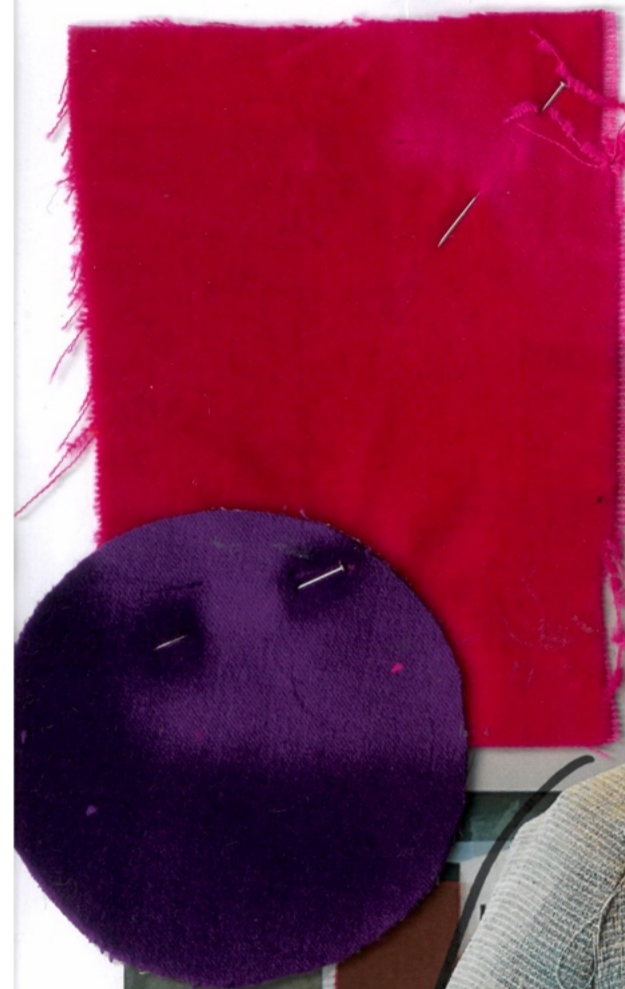


Coat Development





CHOPPED JACKET
VELVET +
EMBROIDERY



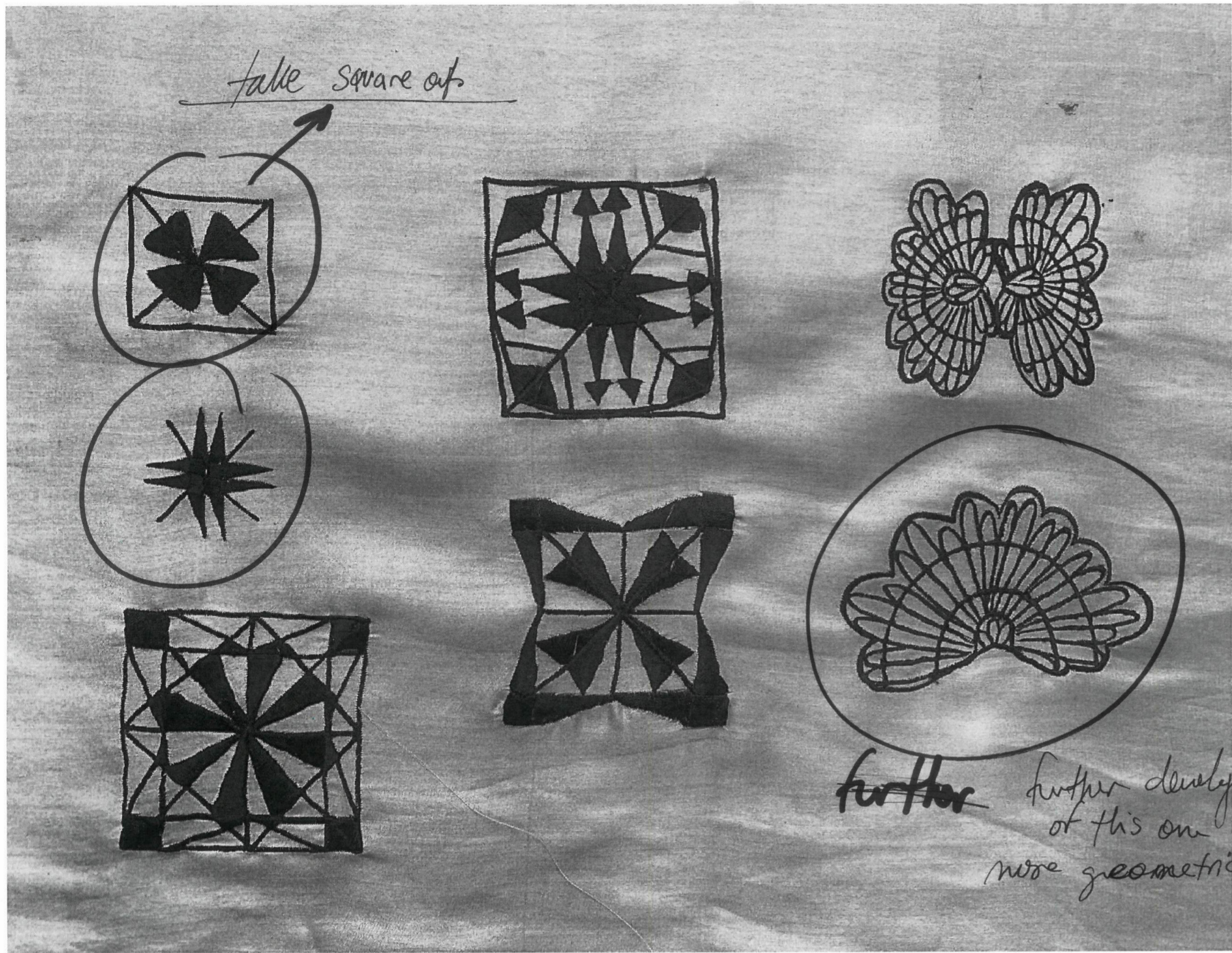
SHORTER SLEEVES

TOILE (1) → FINAL SHIRT



STUDENT-FORM
62
Beneform

For final jacket begin development of embroidery
appliques → starting with Cameroonian Calado shapes.



Embroidery process

Midly spaced
needs reworking



OPT 1



OPT 2

Continues with the "bias" / 45° concept. A bit too crowded. Rejected

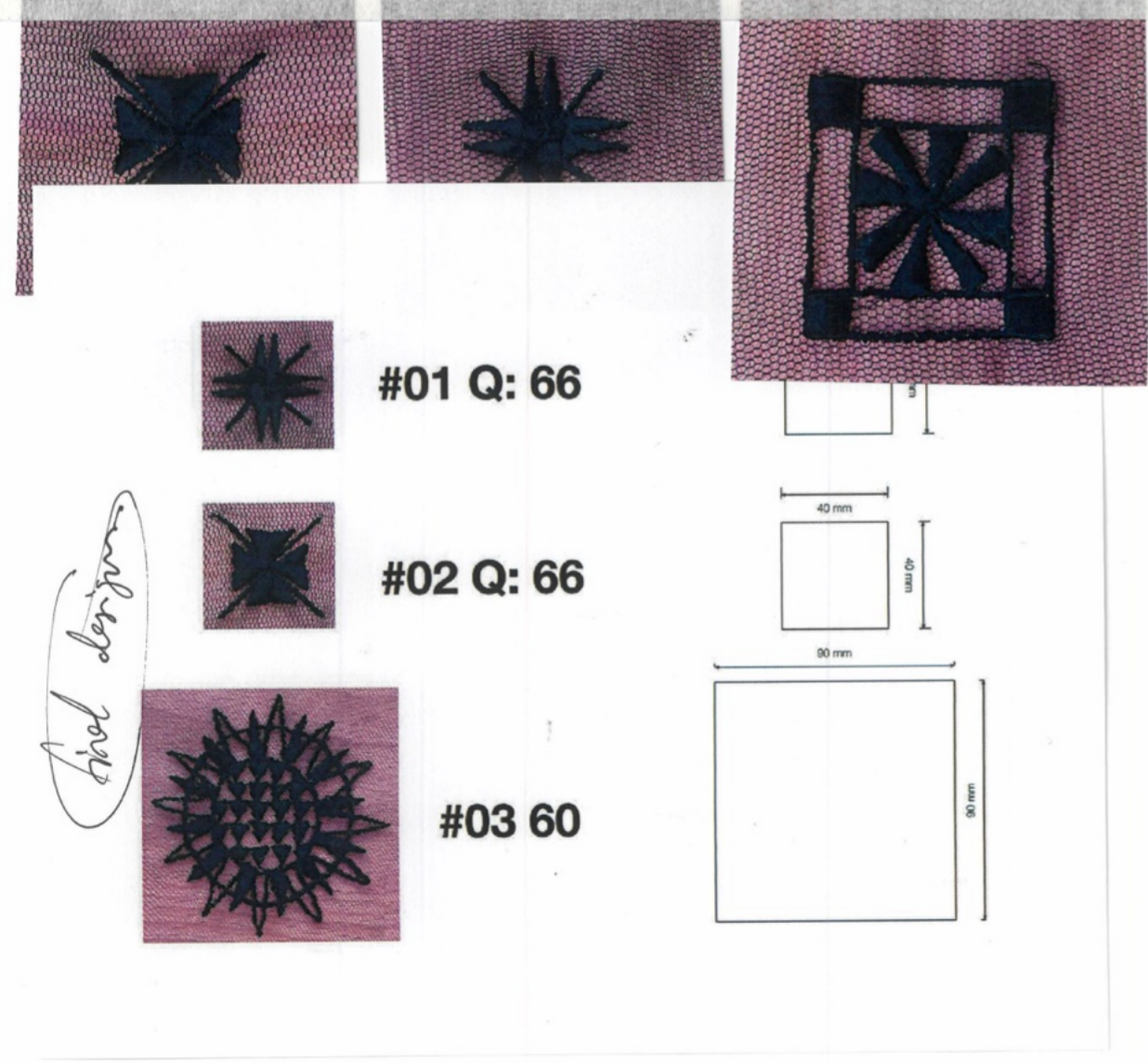
One last change
middle flower with one less
in applique



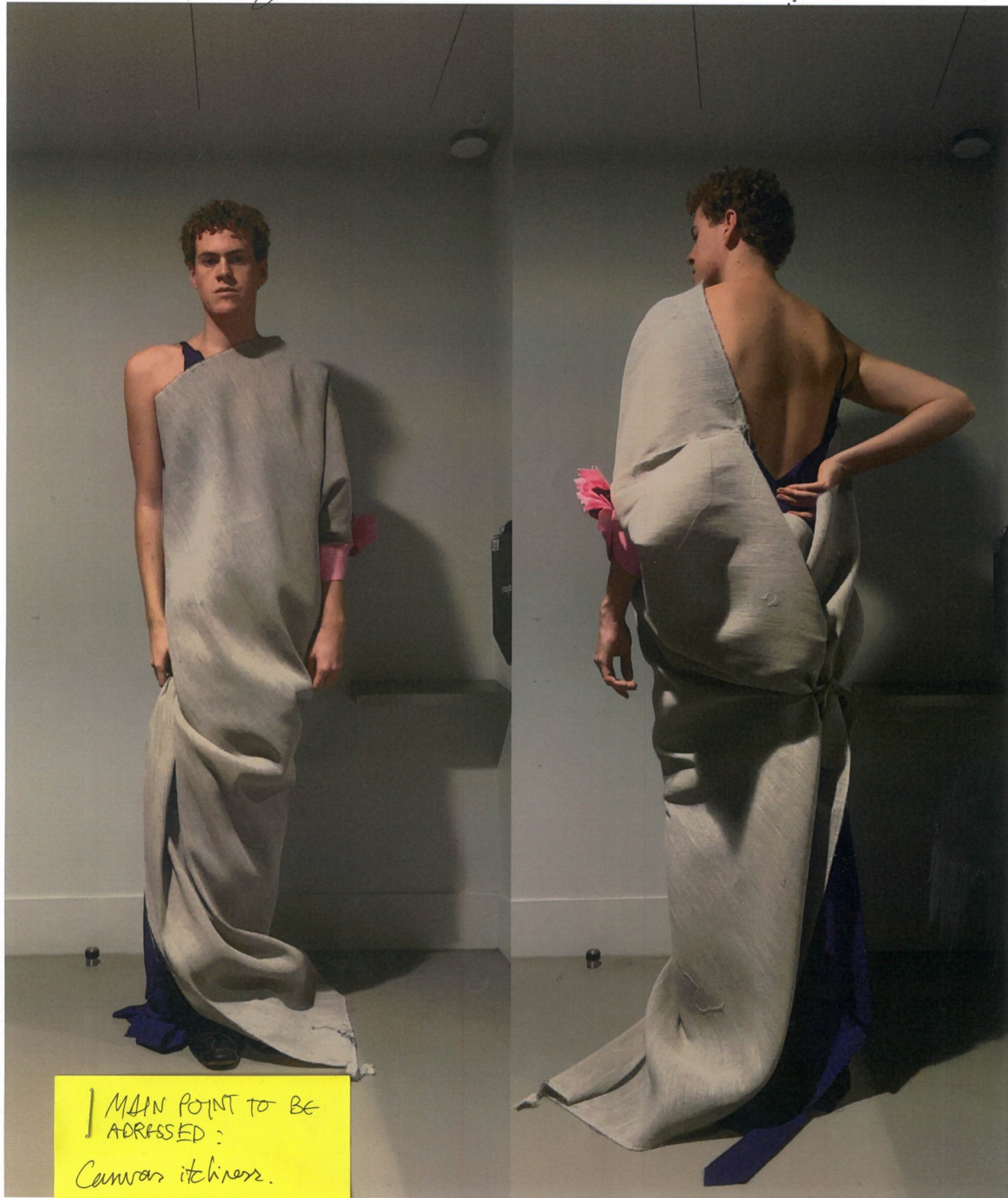
OPT 3

FINAL

Appliques embroidered on tulle (pink for final).



Initial toiling DR-02



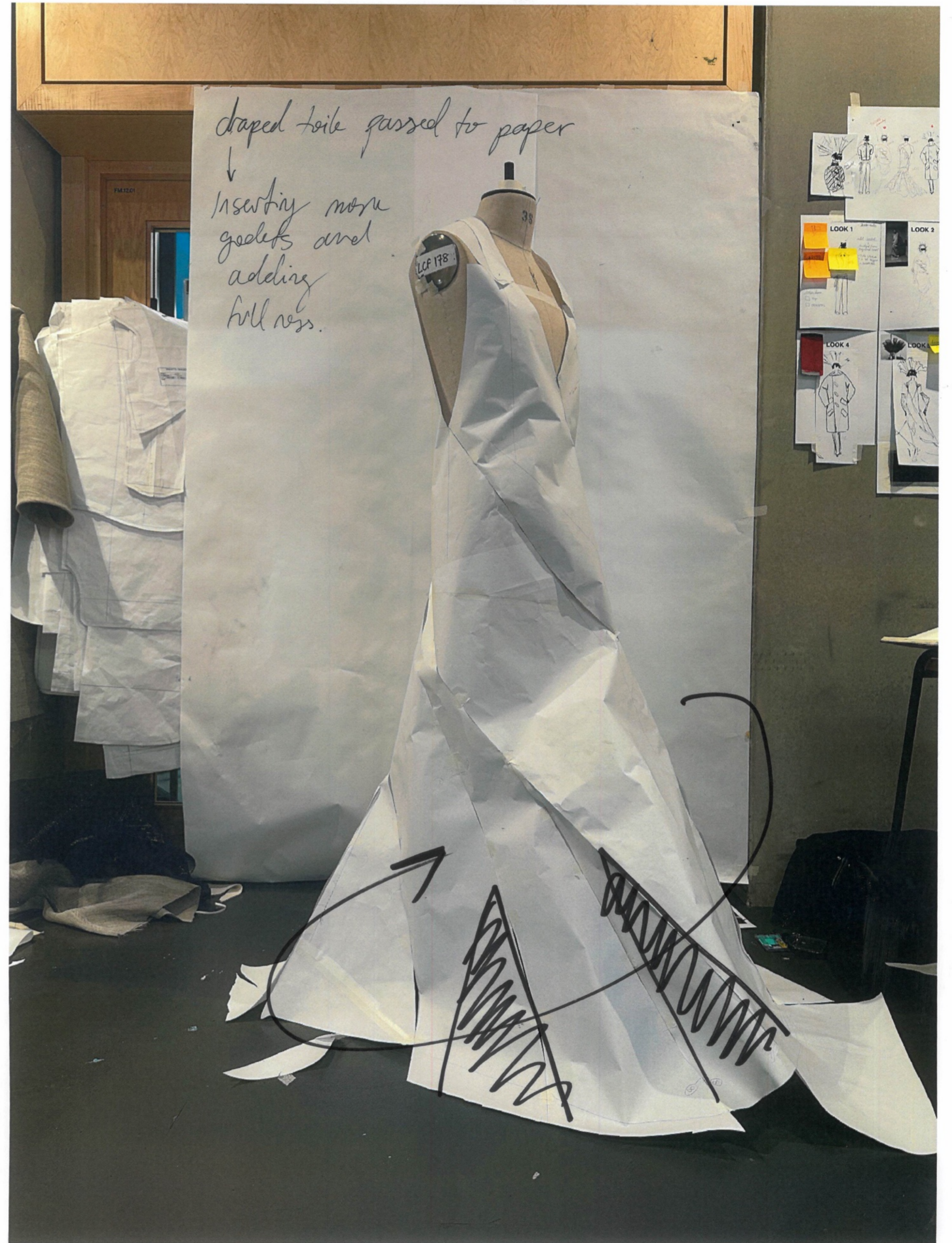
MAIN POINT TO BE
ADDRESSED:
Canvas itiness.
↓
test different options

DEVELOPMENT DR-03

- start point → draping shape.



insert gussets.

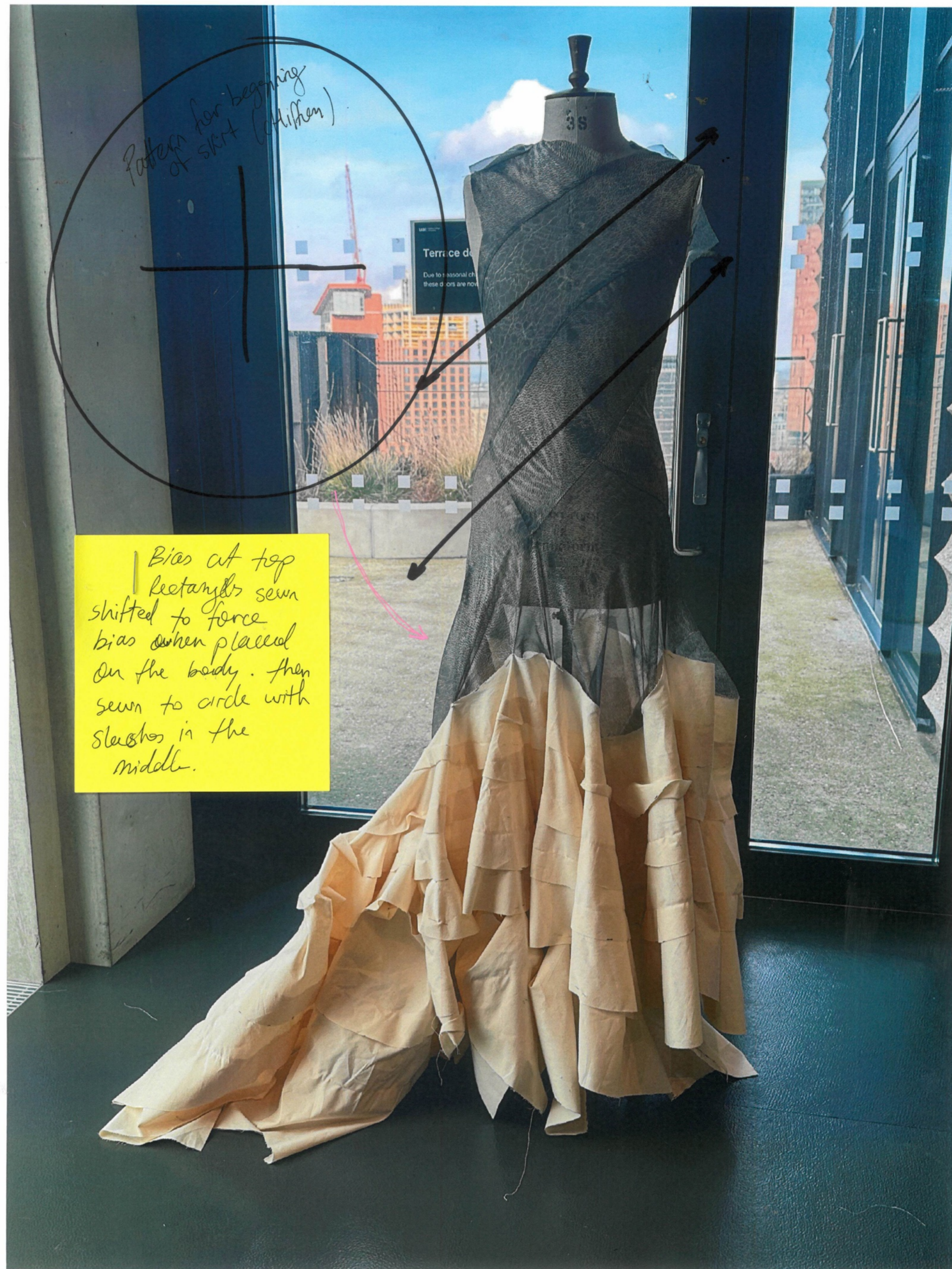


DEVELOPMENT DR. 04

TOILE # 1



no fullness / amount of fabric → Cat-co too heavy → chiffon
Consider adding crinoline to make puffier and voluminous. silk satin



Bias at top
| rectangles sewn
shifted to force
bias when placed
on the body. then
sewn to circle with
slashes in the
middle.



NH2

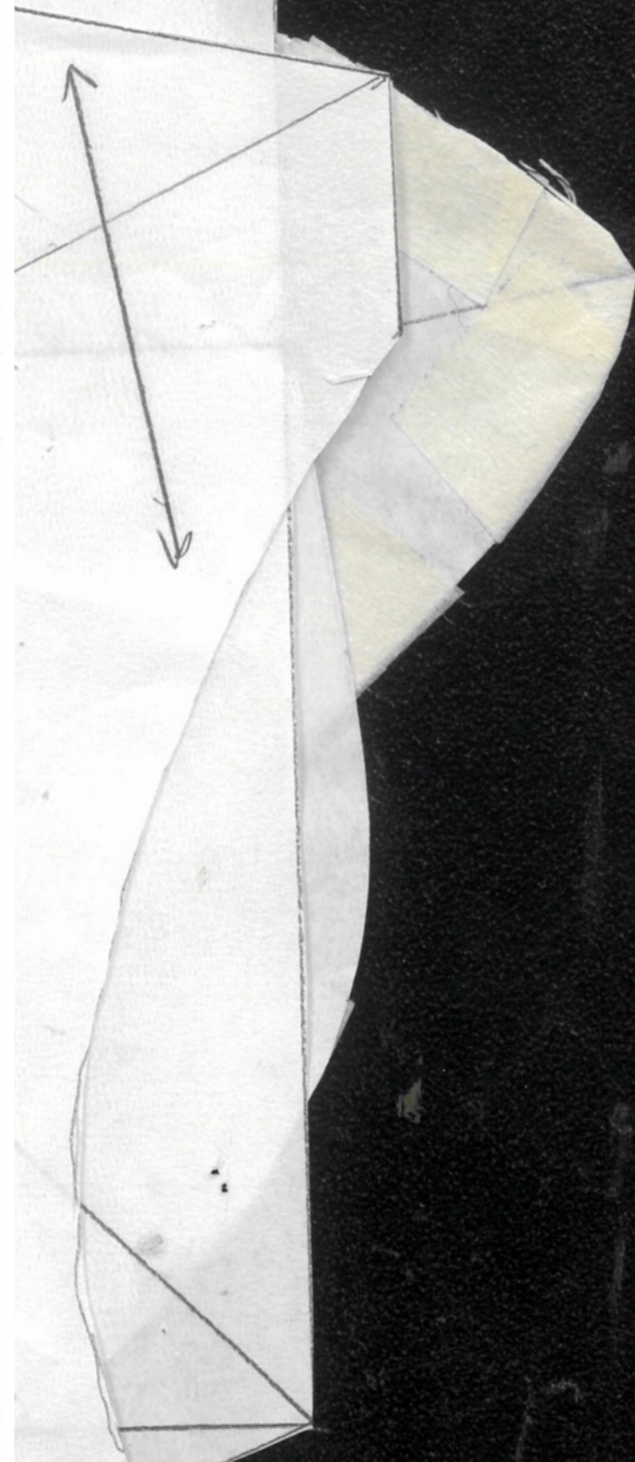
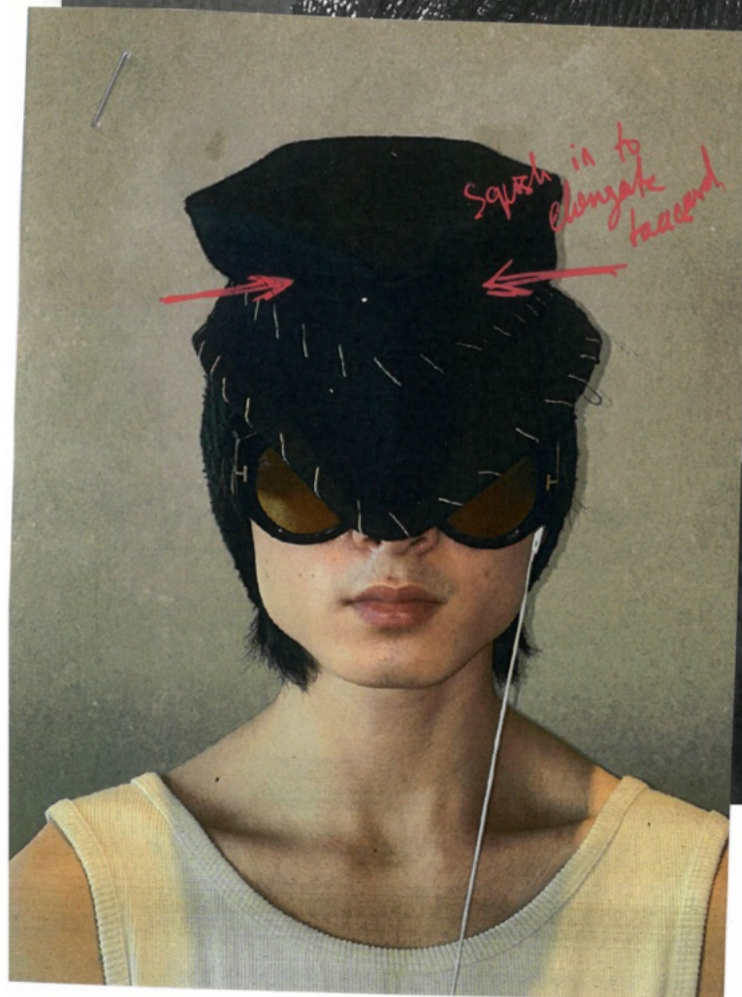
NAME ~~hat~~ ~~style~~ old man hat
SAMPLE NUMBER (7) FABRIC COMPOSITION wool, canvas DATE 30 / 01 / 25
DESCRIPTION

Patterns "old man hat"



ACCEPTED / DENIED

"old man hat"
paper tub



Inside of hat: silk satin fabric.
So it doesn't irritate your hair
and referencing that image
of the hat with the picture of the
young girl inside. → find what to
put inside of the hat.
find something
stiffer for visor
section.
it needs to be rigid and
prissy at the
front.

change that
for proper tape
thicker = sturdier

Crossitch!!
how it keep it

Labels



FINAL DESIGN. ADJUSTABLE AT BACK WITH PIN BROOCH



< - 0 - + 13 May 2025 at 02:48:26 50,556 of 51,155 ⓘ ⬇️ ❤️ 📄 ✂️ Edit



ALL OF THAT FOR THE HAT TO END UP FLOATING IN THE THAMES.

constructed structural.

stiff

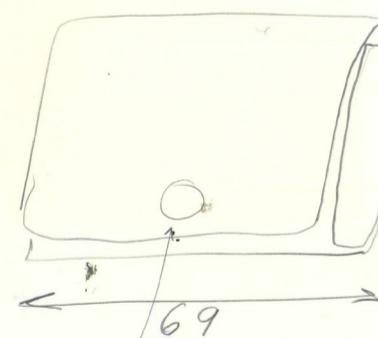
LEATHER
embossing.

SPINY → SMOOTHLY



BAG MEASUREMENT

FRONT



Hook for a strap

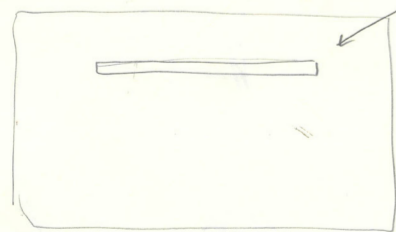
46

69

Total length 115

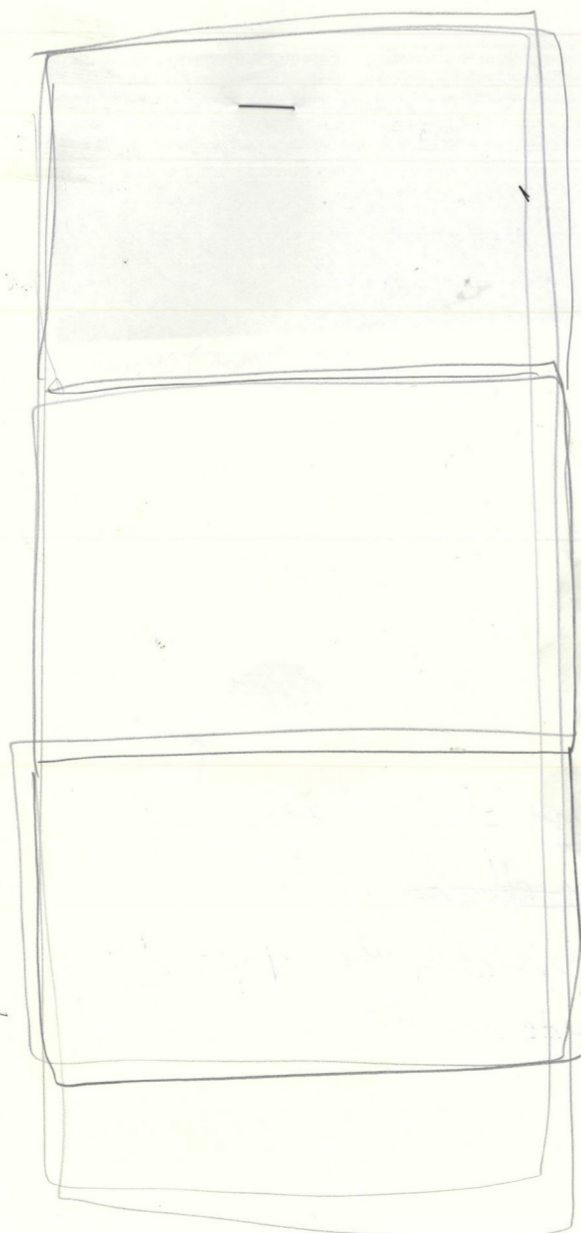
Some sort of closure/clasp if possible invisible

Interior red velvet



pocket with Zip for a laptop.

I want the bag to be able to be fully opened flat.



FOUND LEATHER FLODED IN THREE PARTS, TO BE USED AS A PORTFOLIO BAG