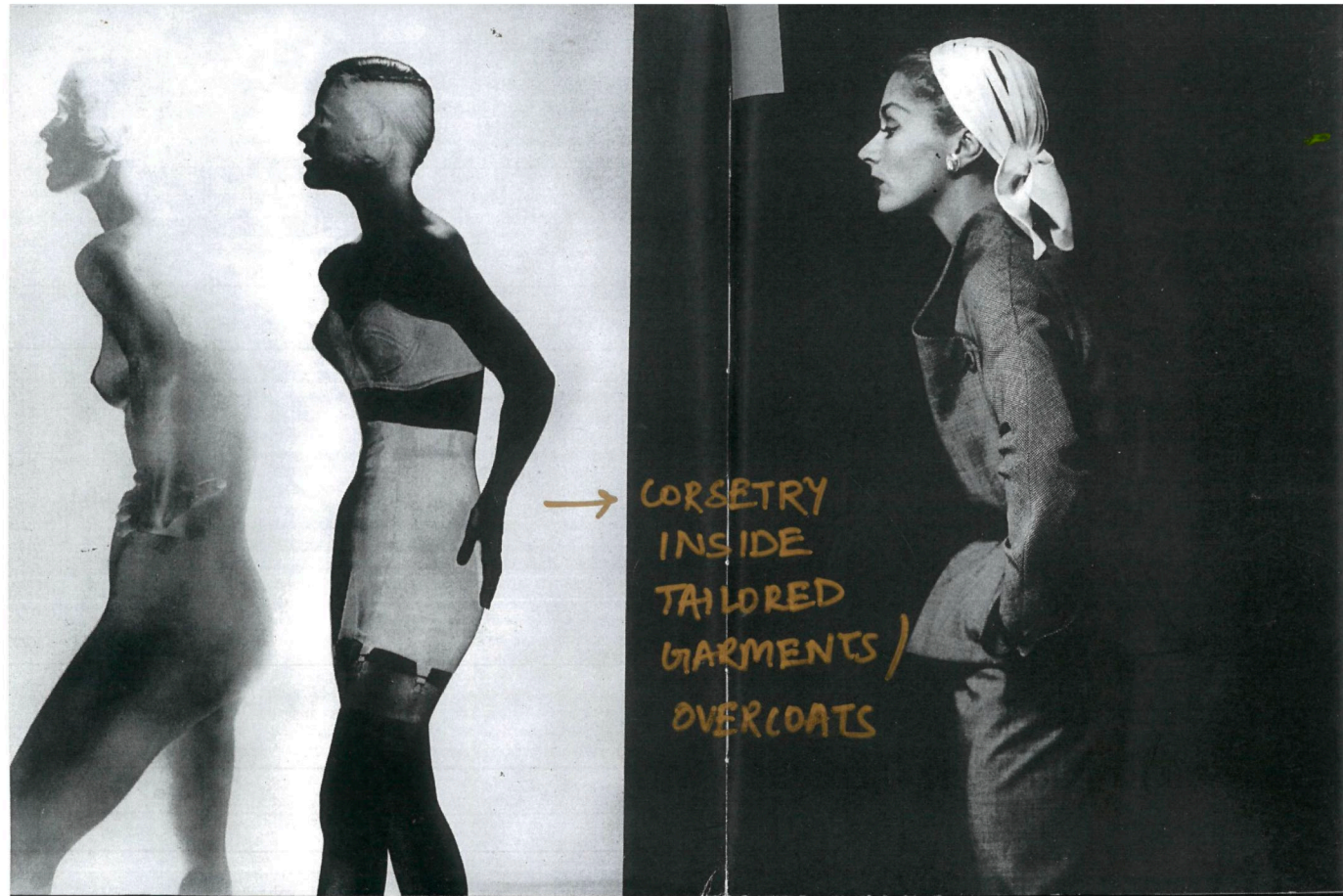




Silhouette
exploration —
construction

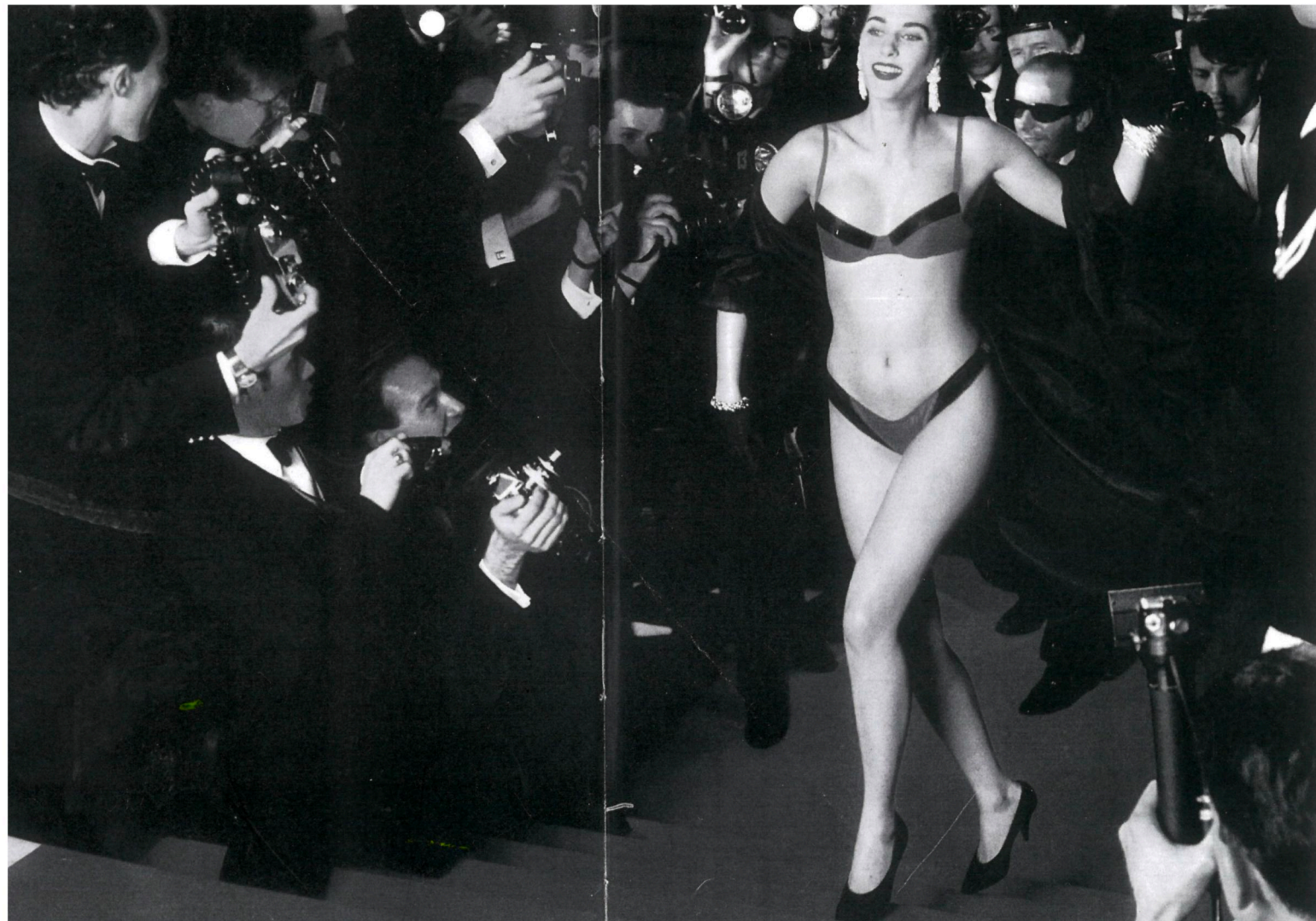
Delicate yet
strong shapes



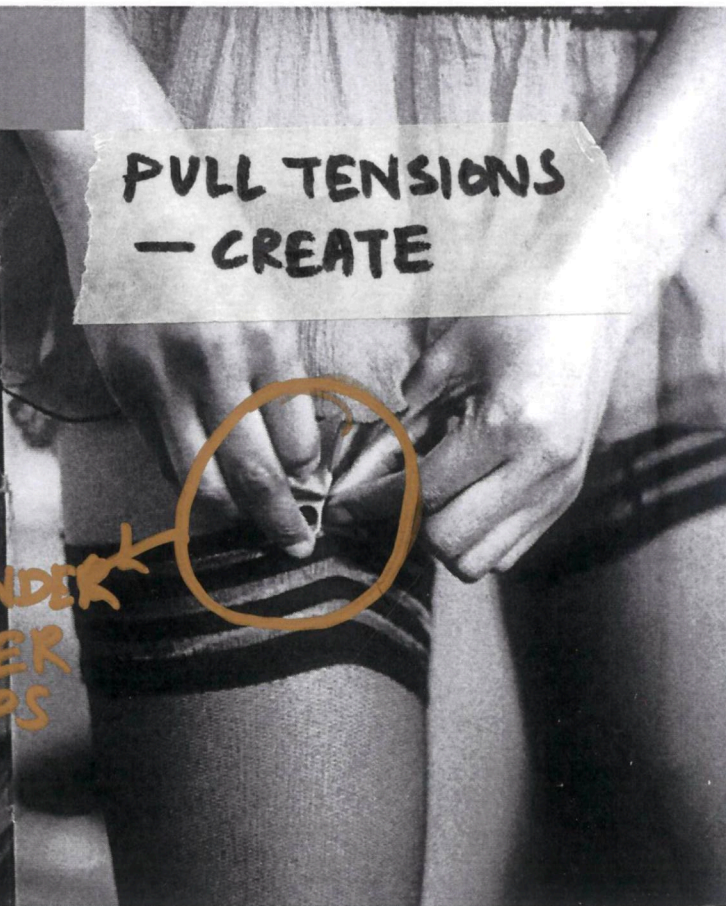
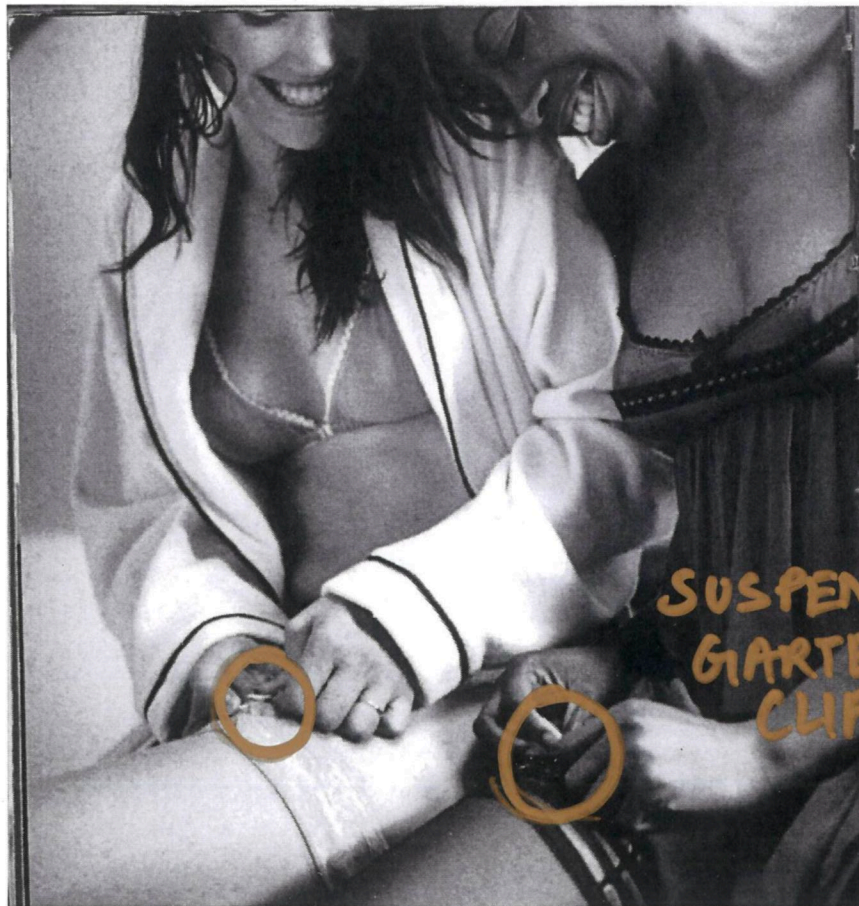
CORSETRY
INSIDE
TAILORED
GARMENTS /
OVERCOATS

"The body line beneath mid-century fashions. The waistline is still small, held in by a long-line girdle in peach-coloured satin and 'Youthlastic', the breasts encased in a structured, poplin brassière. The cut of clothes, placing bulk above the waist and thus attenuating the line below, depended on well-cut lingerie to provide the right foundation.

BY 1950 Blumenfeld, Warner, Jacques Fath

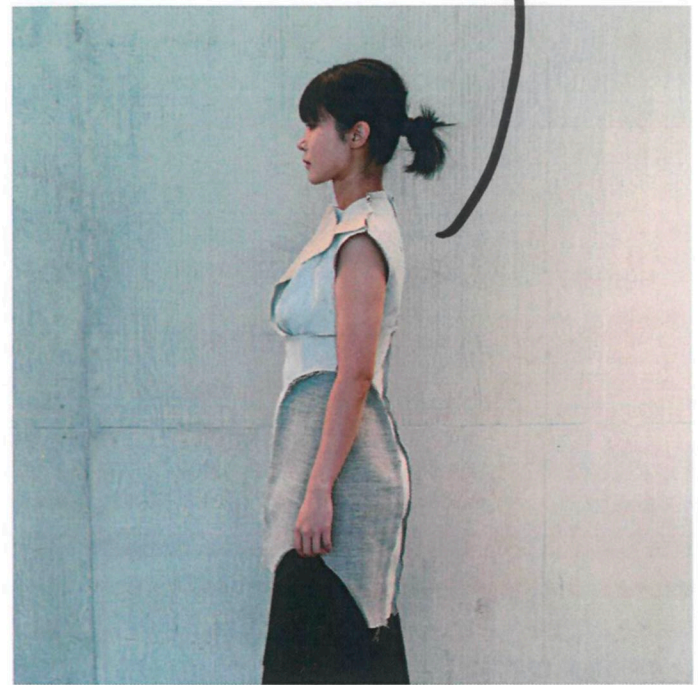


FUR
BLANKET
WRAPPED
AROUND
THE
BODY





Remove sleeves?



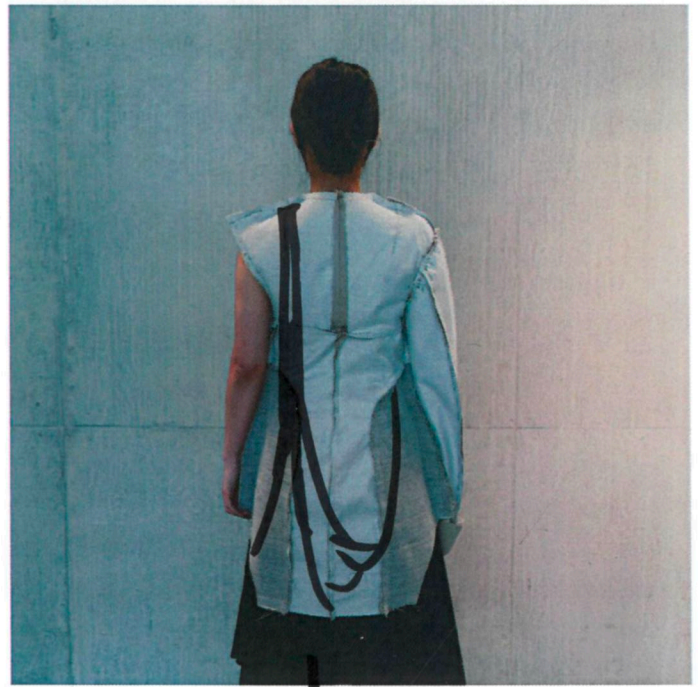
Make the hem small length (seductive)



Reduce sleeve volume



panty line hem



Lifting the sheer layer up

