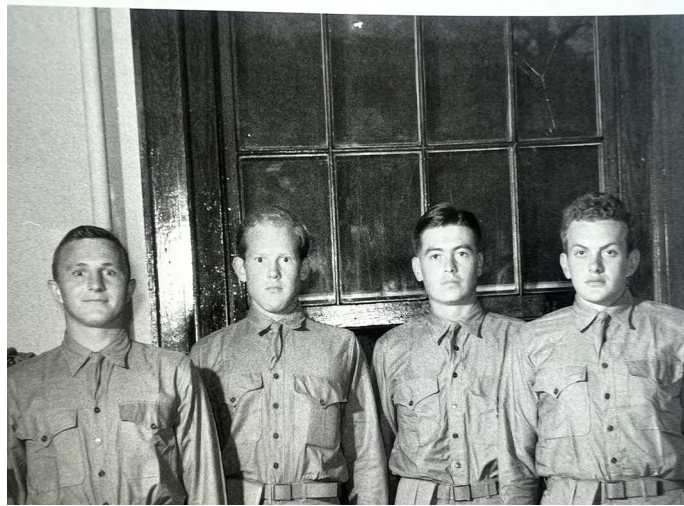
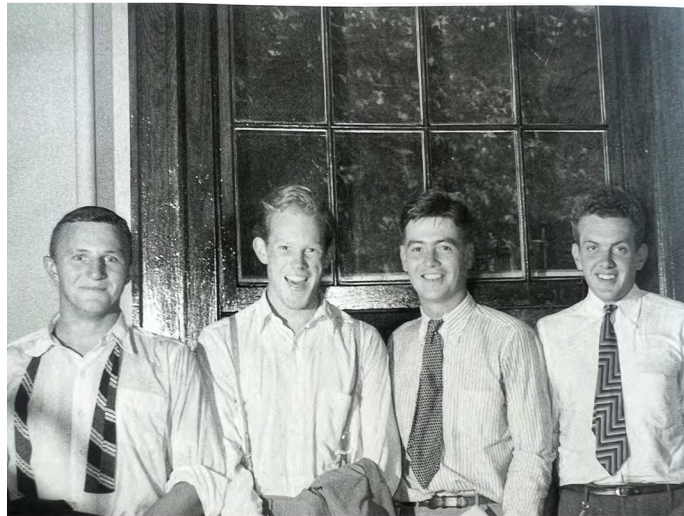


# Taewan Kim

*some pages from Development & Toile*



*19011480 Taewan Kim*

cape bomber 1st fitting

- 1. fit - neck rib/pattern change
- 2. fit - sleeve rib longer
- 3. design - knit fabric develop.
  - use dots
- 4. design - style line change (front)



use knit fabric / underneath orange  
 under - cotton lining  
 → make it more structured.

- 1. fit - make waist line deeper
- 2. design - rolled-up detail with different panel
- 3. design - pocket - piping

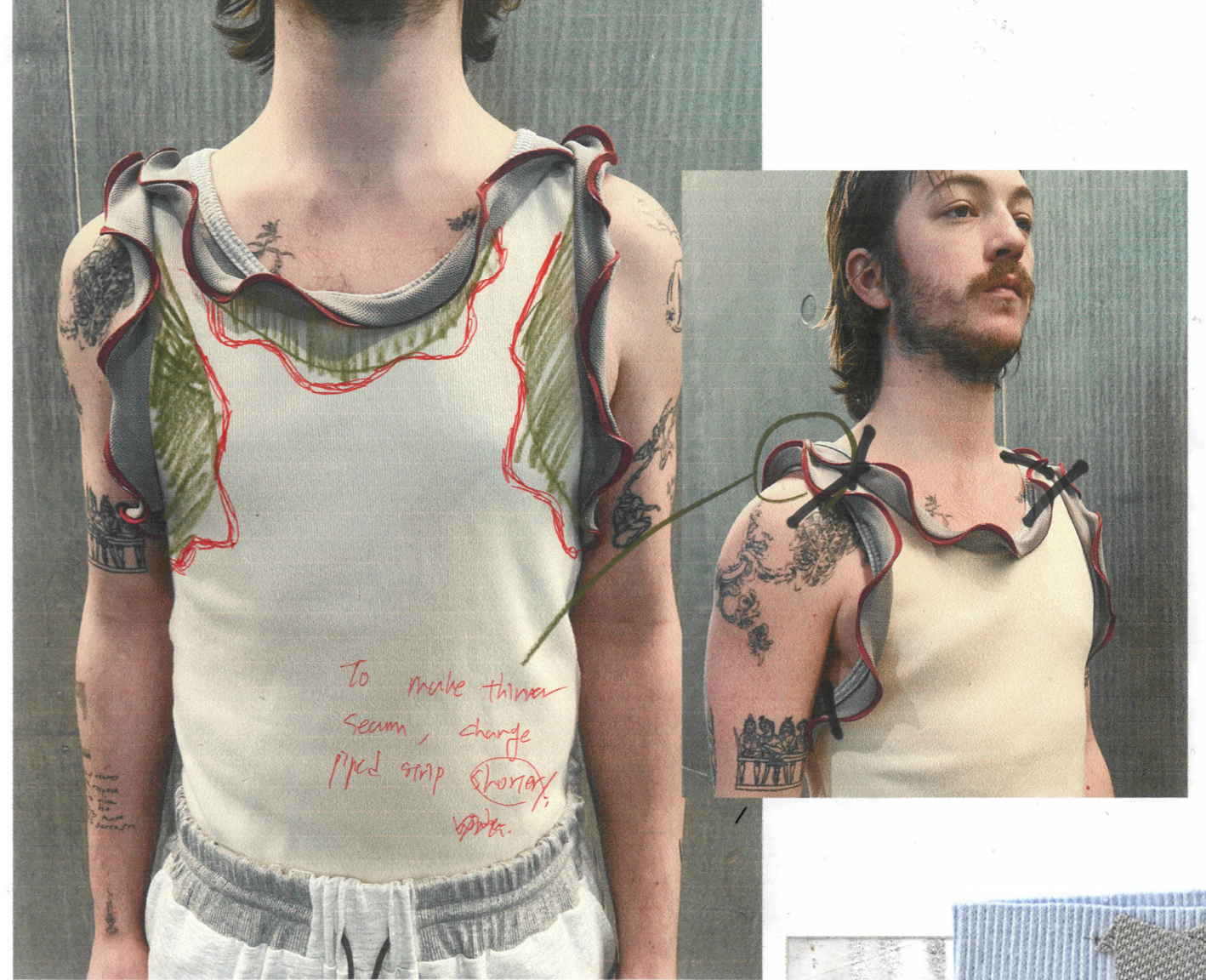


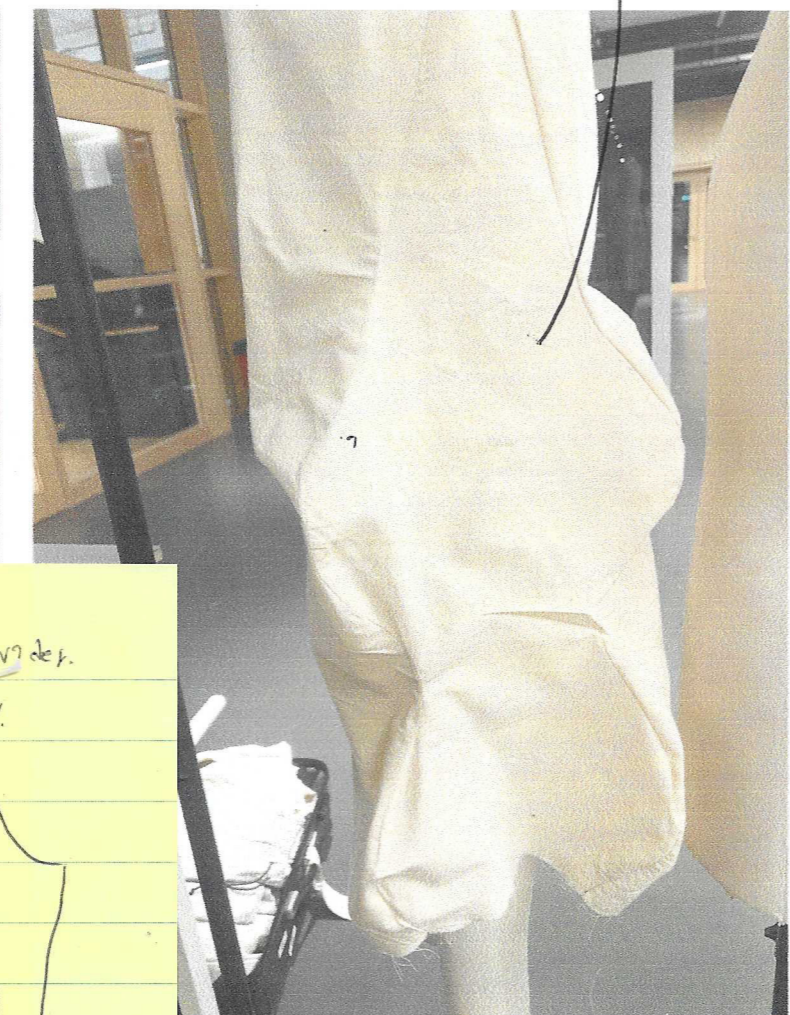
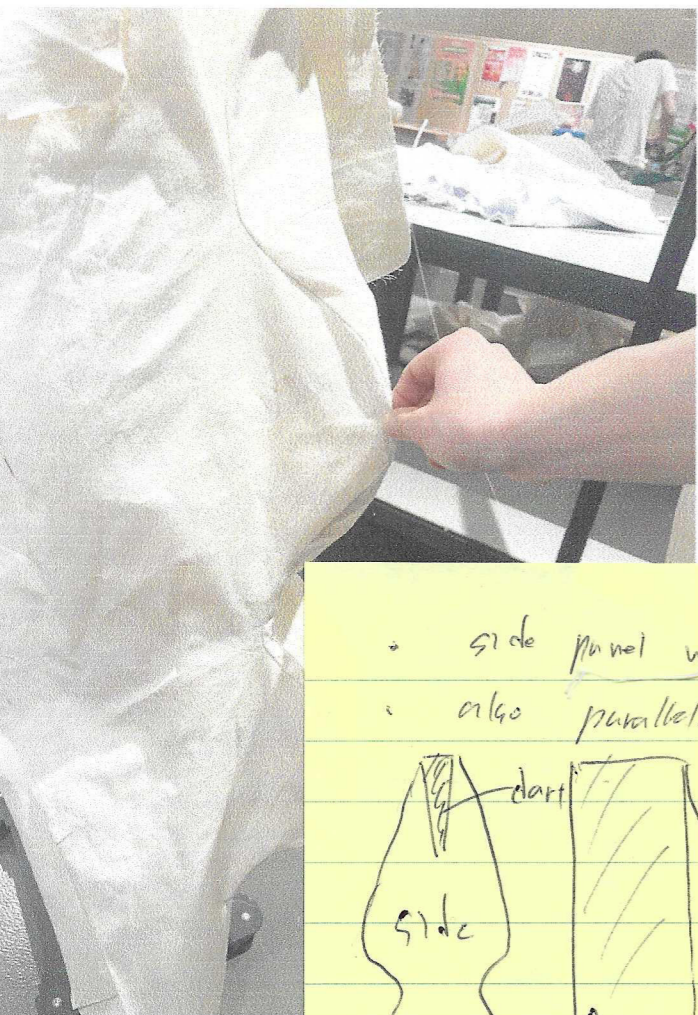
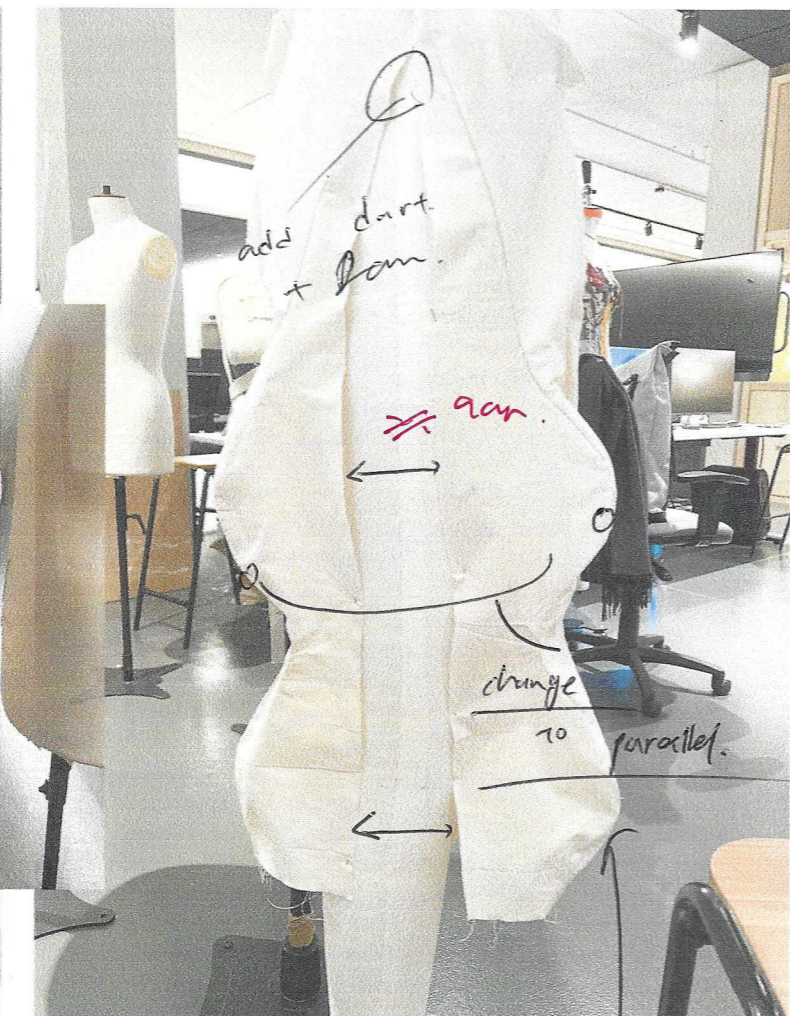
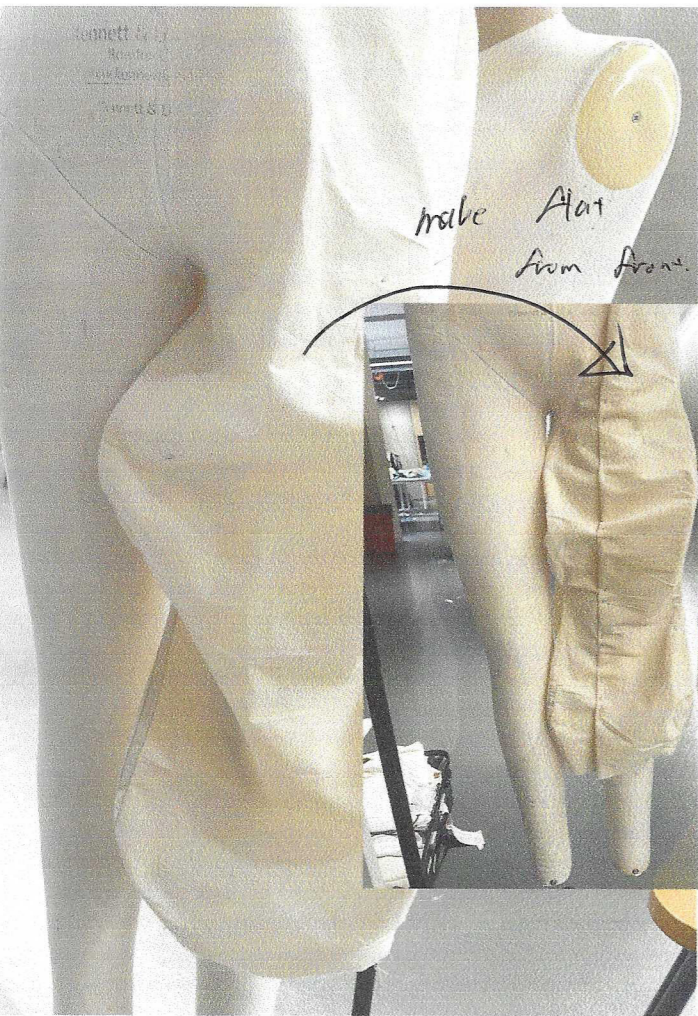
training shorts 1st fitting

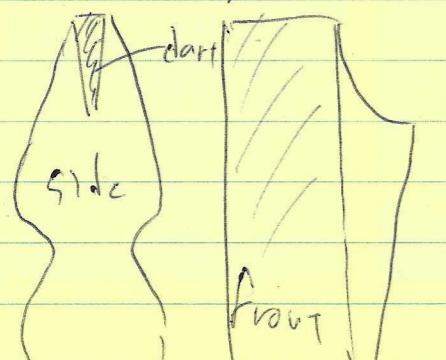




FINAL SAMPLE - PLAYGROUND CAMOFLAGE PRINT -DYE SUB PRINT



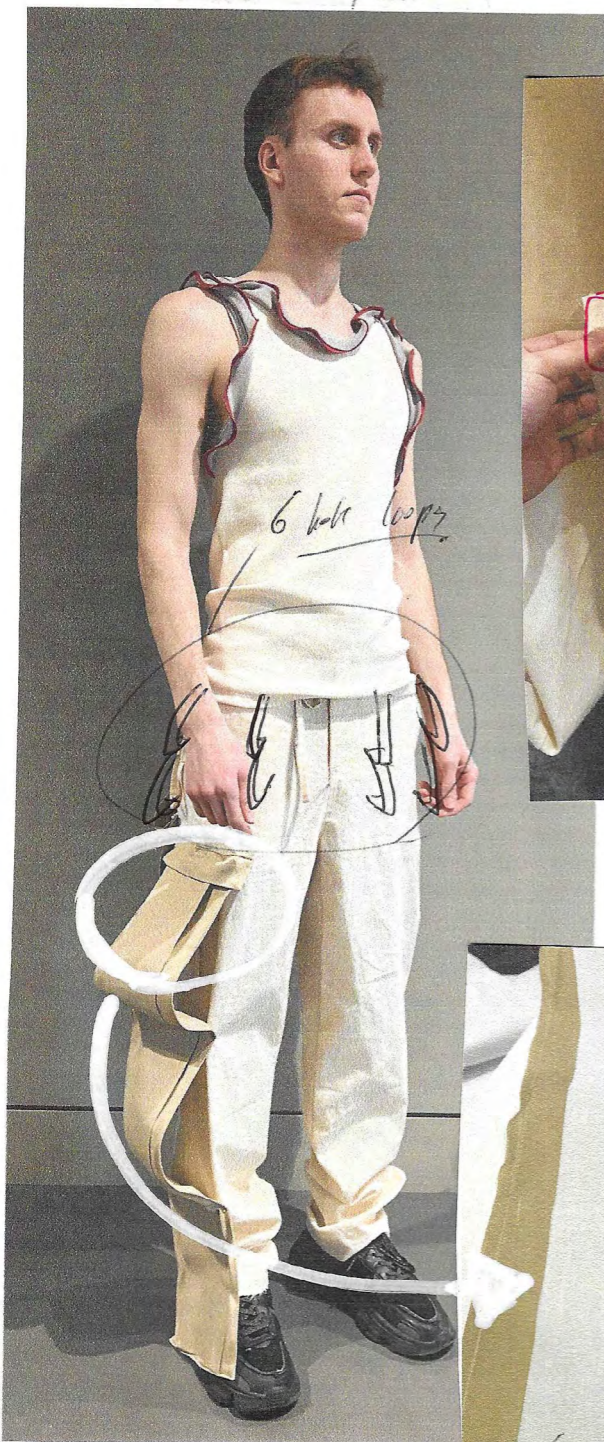


• side panel wider.  
 • also parallel.  


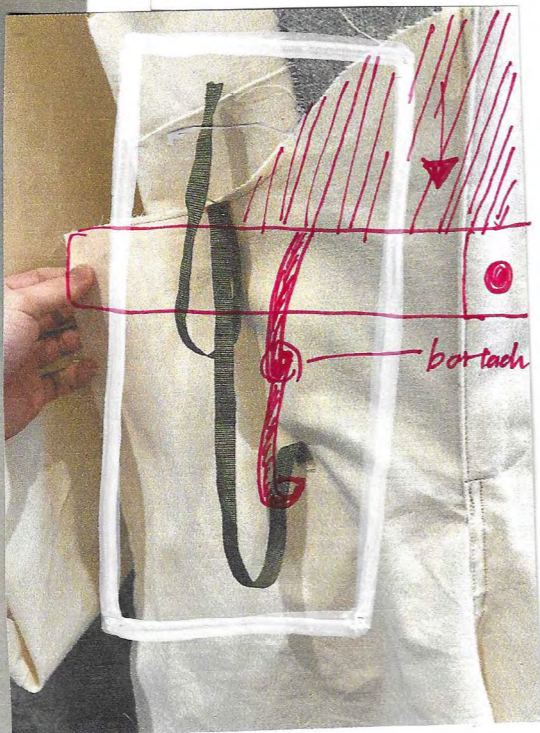


to add  
 change side panel / front & back.  
 do simple again and draw.  
 to make flat front/back.

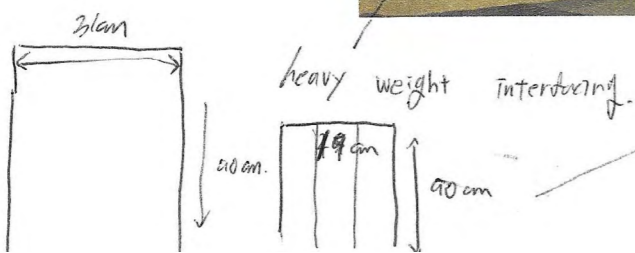
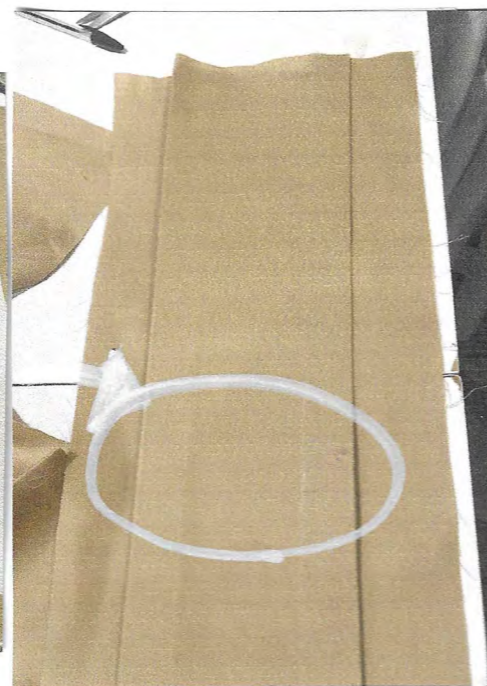
Slide m/s feed parts  
 take / development.



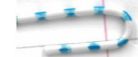
6 belt loops



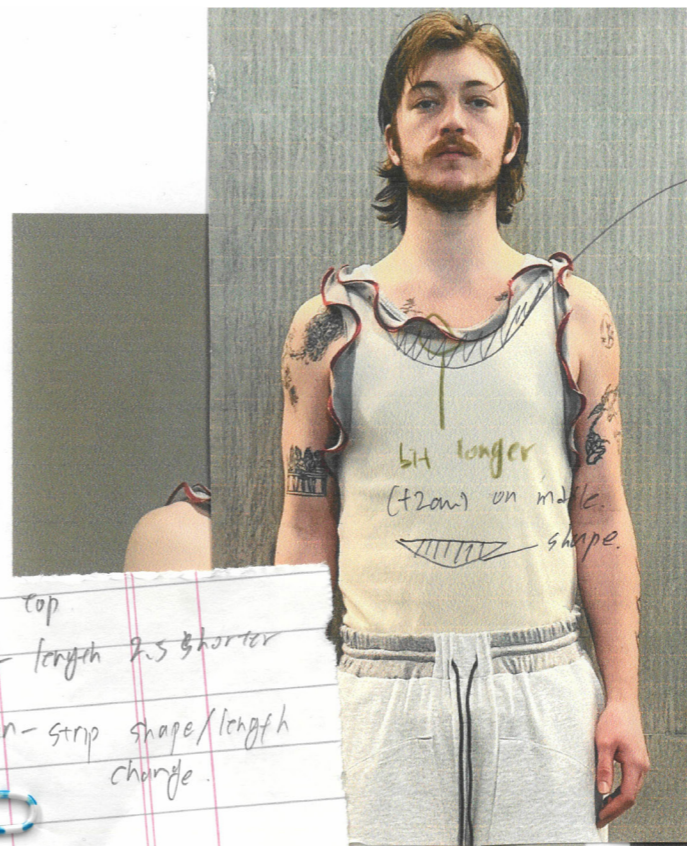
bot tach



Tank top  
 1. fit - length 2.5 shorter  
 2. design - strip shape/length change.

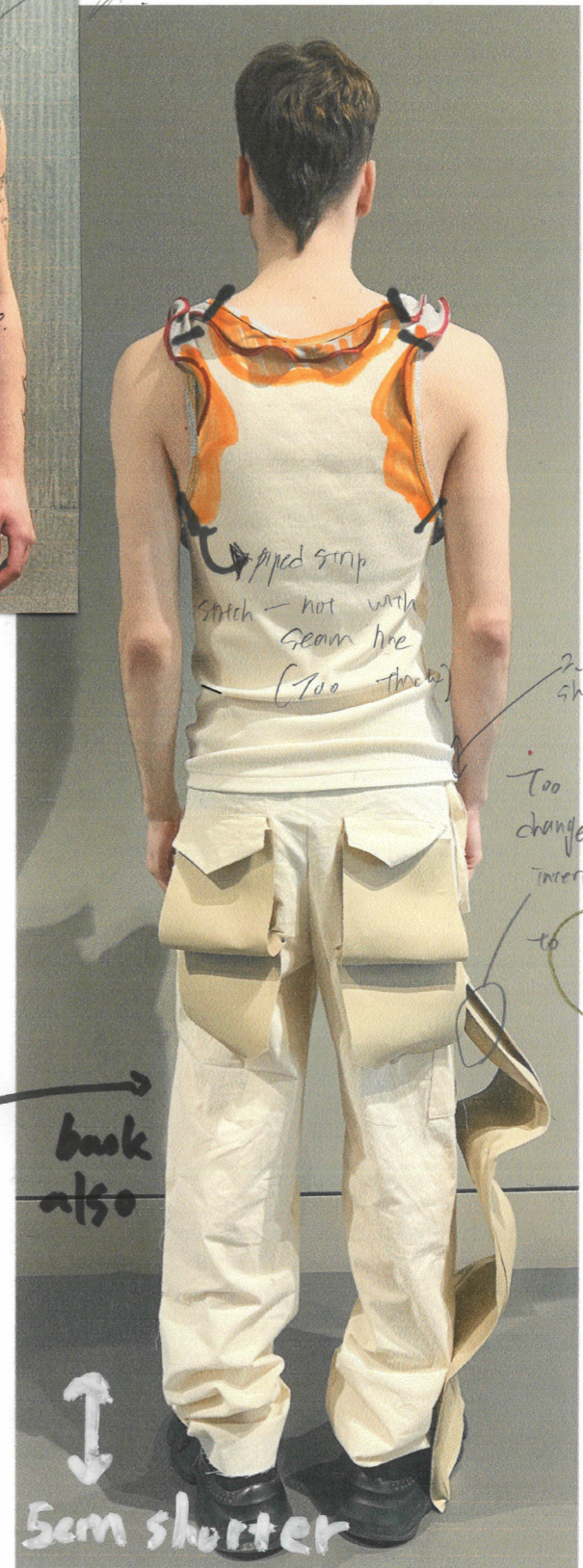


Slide pants  
 1. fit - 5cm shorter  
 2. fit - belt shape change to straight.  
 3. design - F/B - curve slide pattern.  
 4. change - pocket flap curve



bit longer  
 (+2cm) on mid c.  
 shape.

cover  
 1/2??



piped strip  
 stitch - not with  
 seam line  
 (too thick)

2.5cm  
 shorter.

Too hard  
 change cap/hang  
 interfere

to hand web  
 + binding

back  
 also

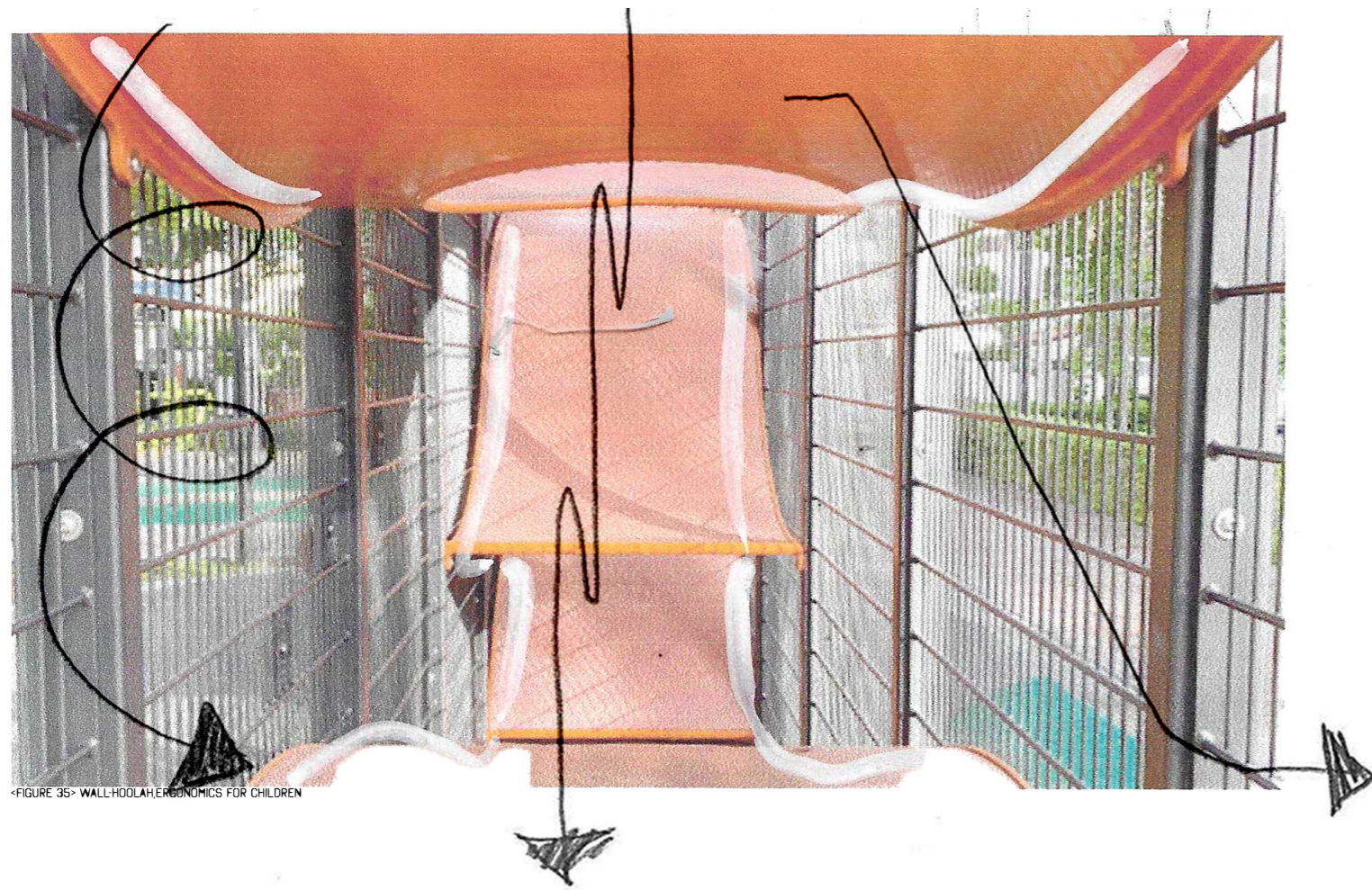
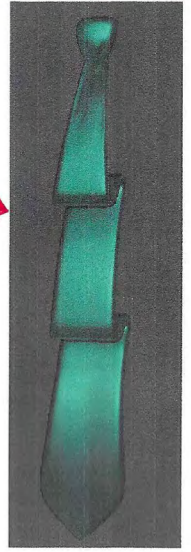
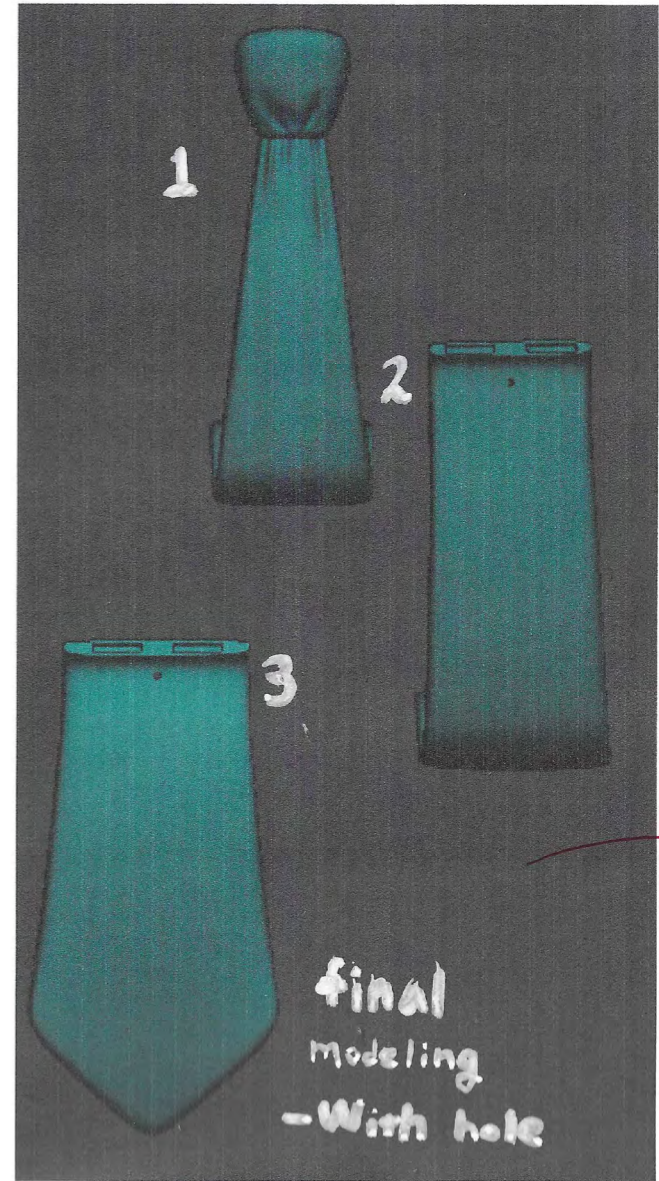
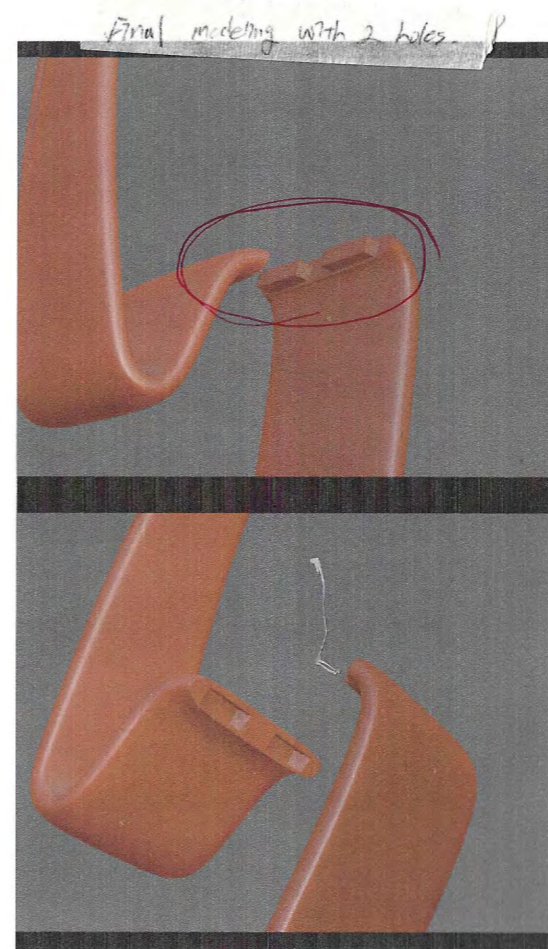
5cm shorter



FIGURE 33- JAKALA DOMESTIC LANDSCAPE DESIGN E. ANNA BLATTERT



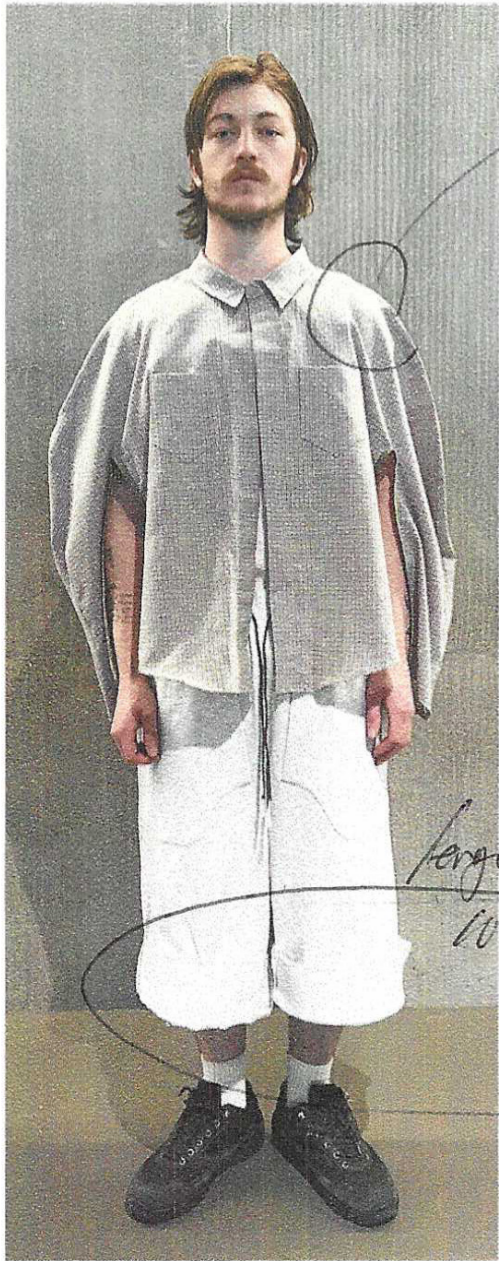
FINAL SAMPLE - TOY SOLDIER CAMOFLAGE PRINT - 3LAYERS SCREEN PRINT



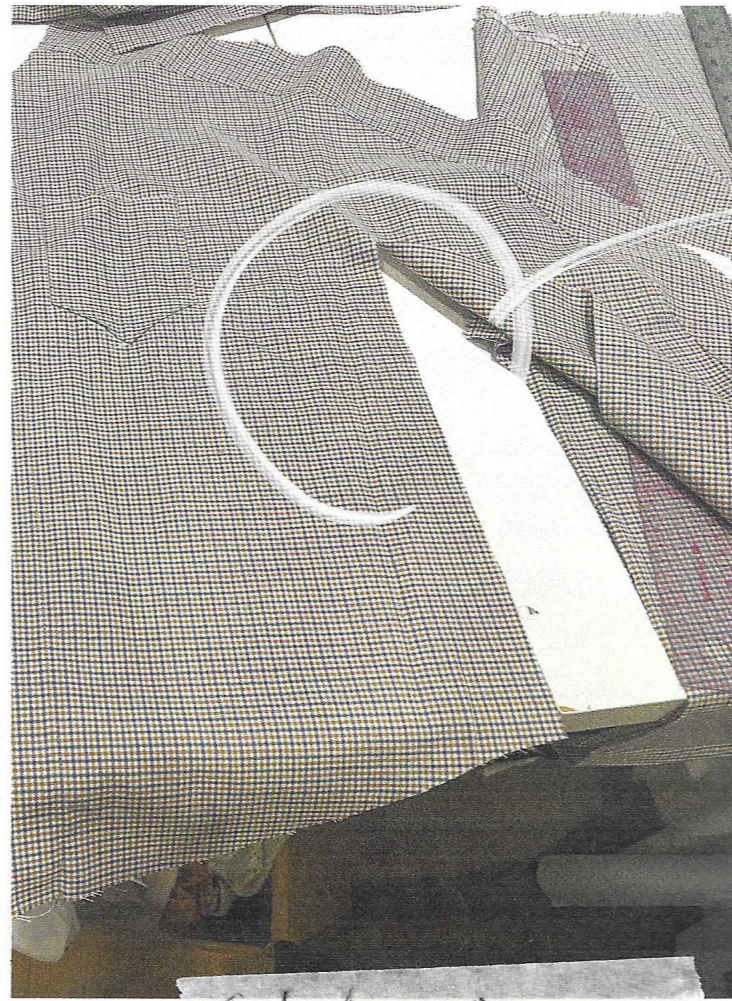
<FIGURE 35> WALL-HOOLAAH, ERGONOMICS FOR CHILDREN

FINAL SAMPLE SLIDE TIE- 3D PRINT

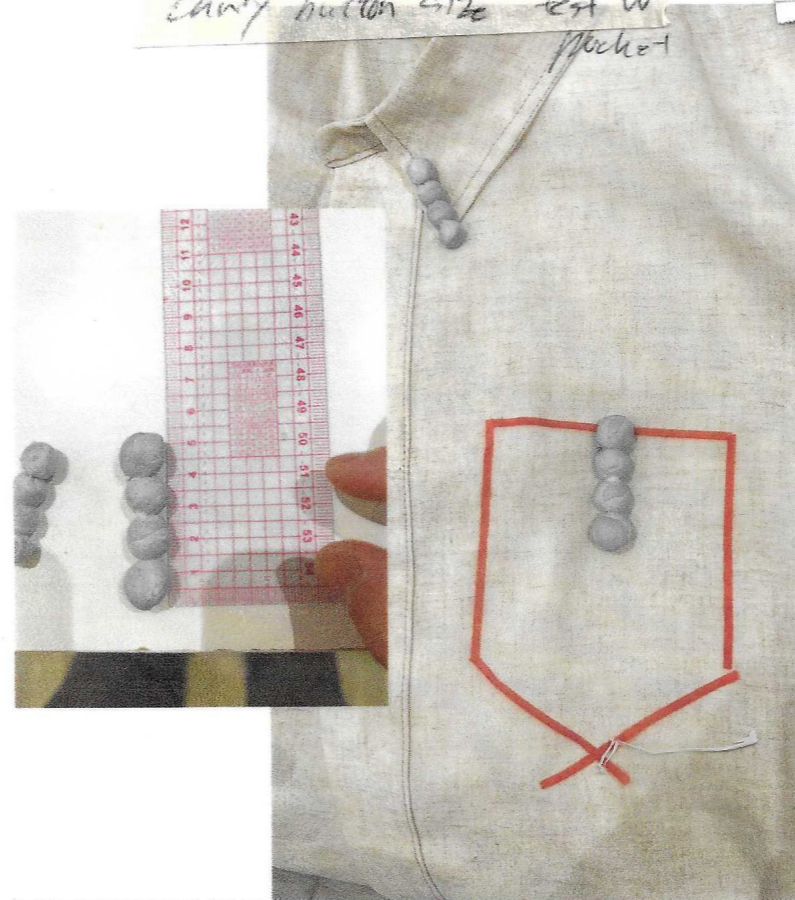
# Look 1. circle cape shirt / trailing jersey shorts. sample



length ↑  
10cm

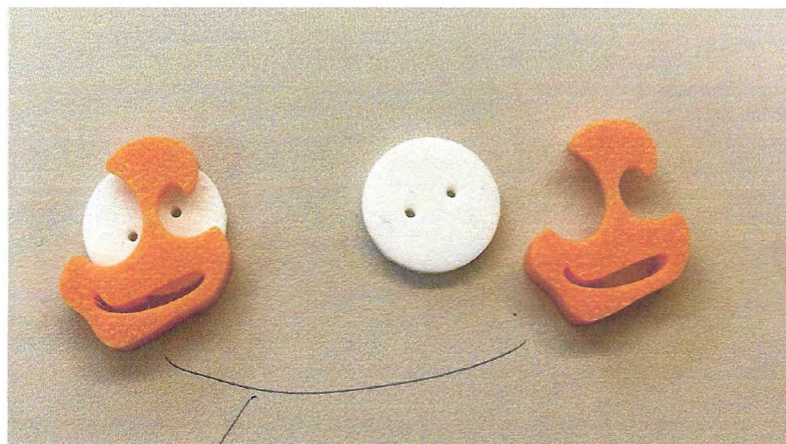
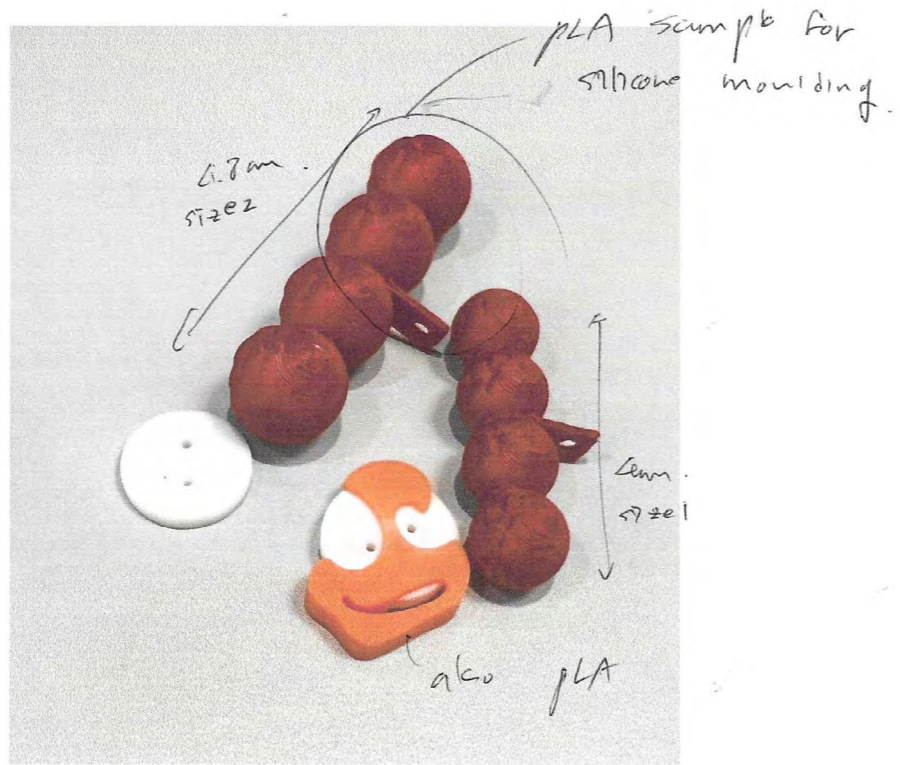


Can't button size est W  
Pocket



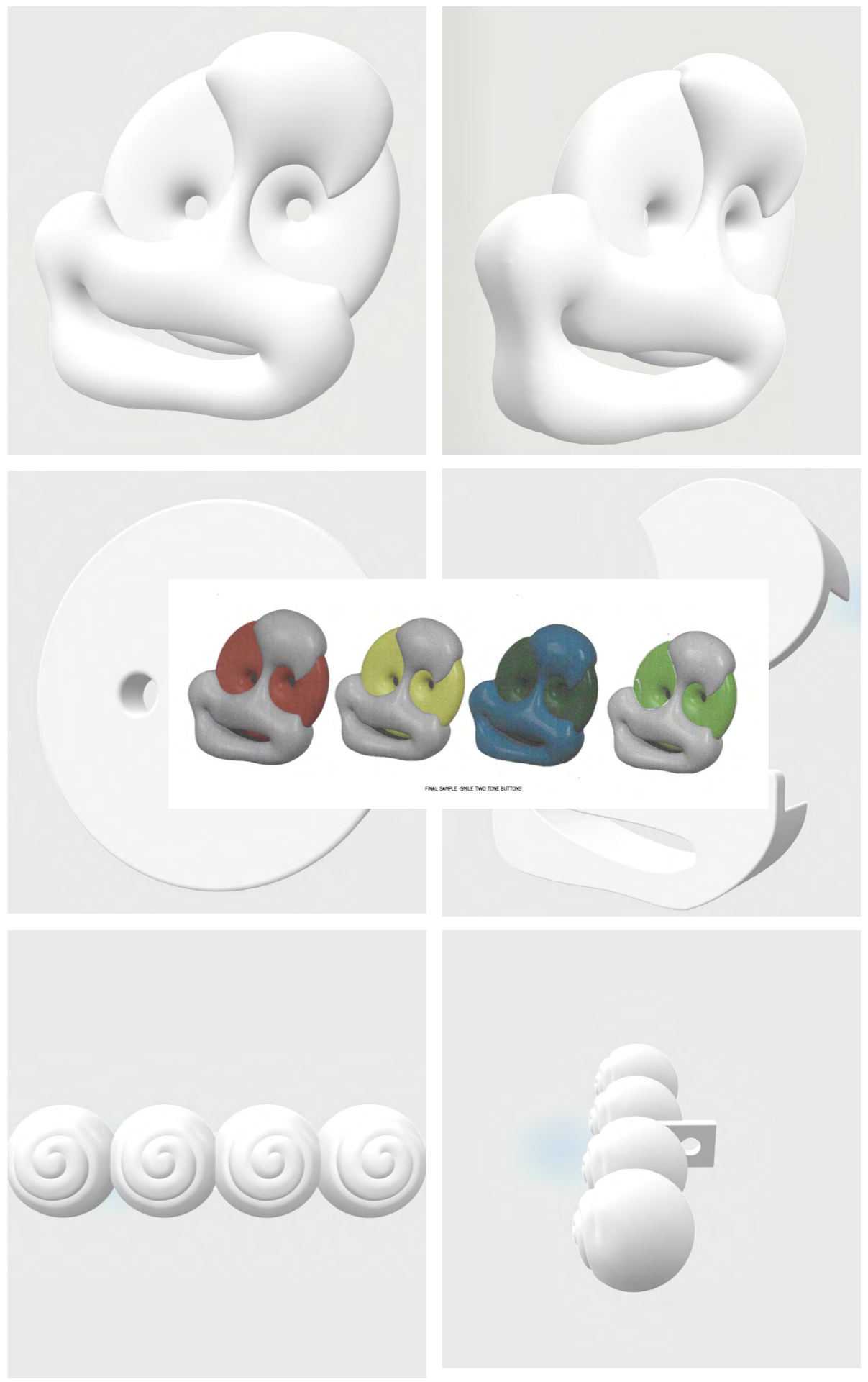
Final Sample (button)





for shirts / make buttons flat.

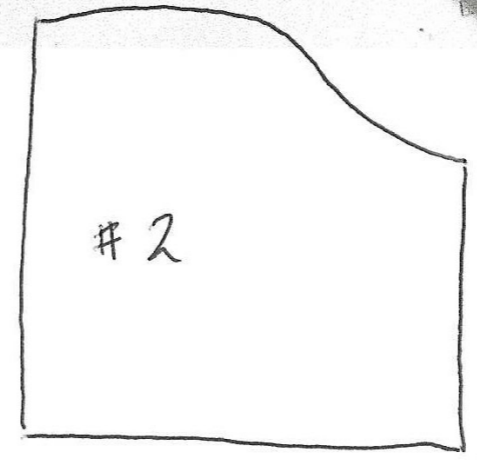
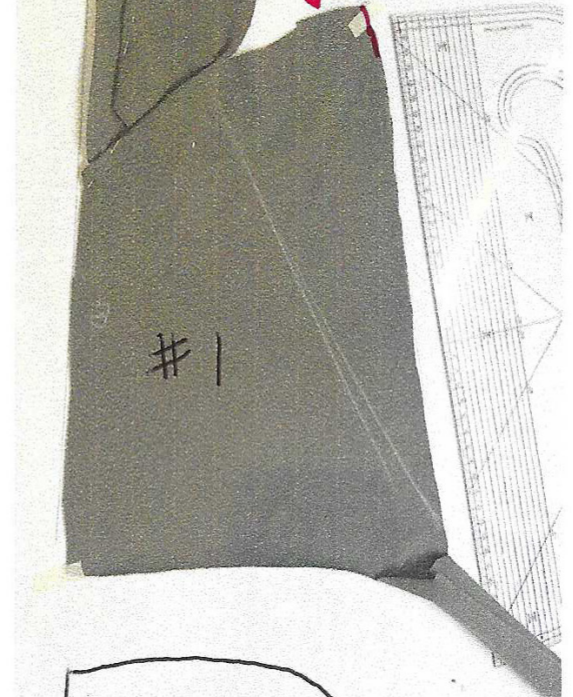
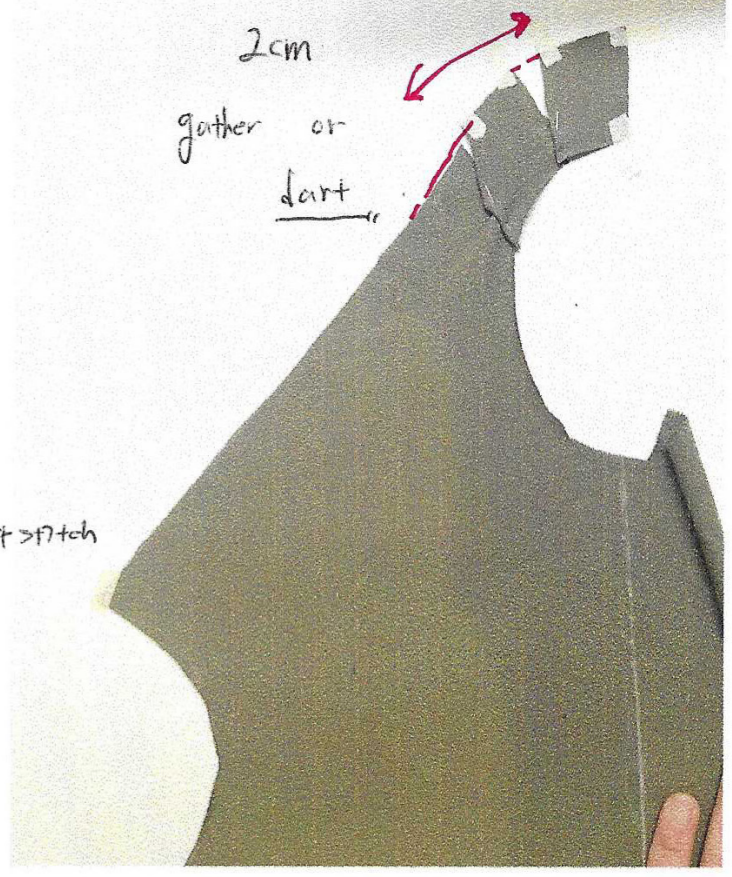
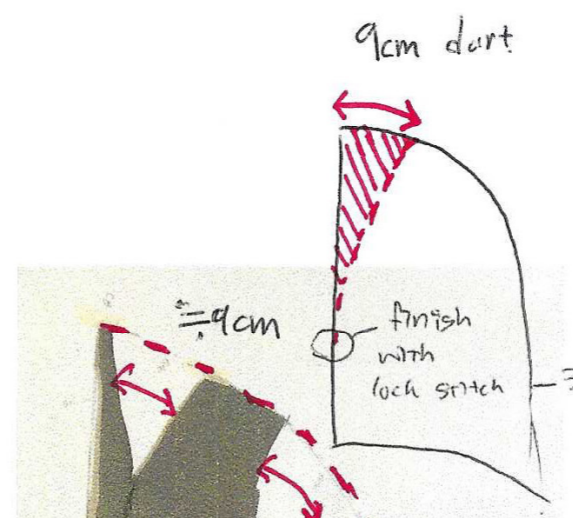
FINAL SAMPLE - SMILE TWO TONE BUTTONS-SHIRTS (FOR SILICONE MOULDING)



draped hoodie long sleeve - draping

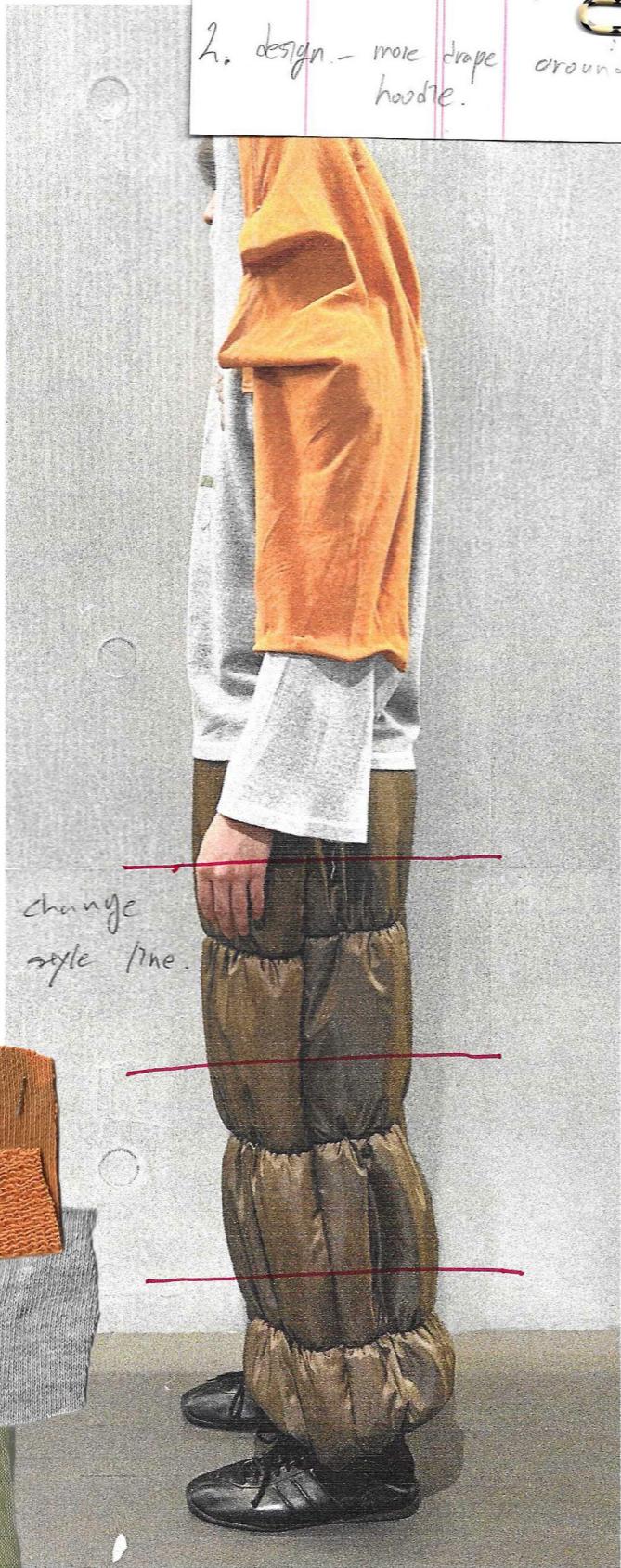
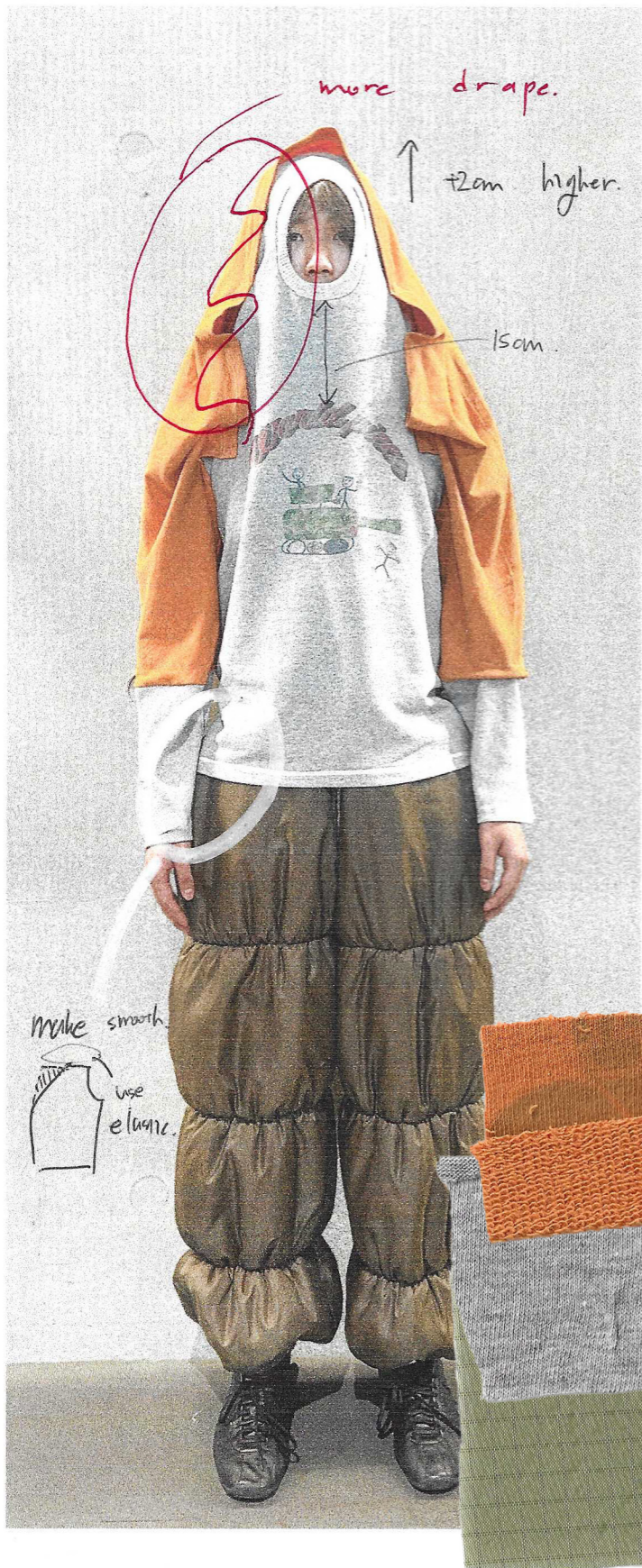
play childish in military dormitory

put army training jersey on



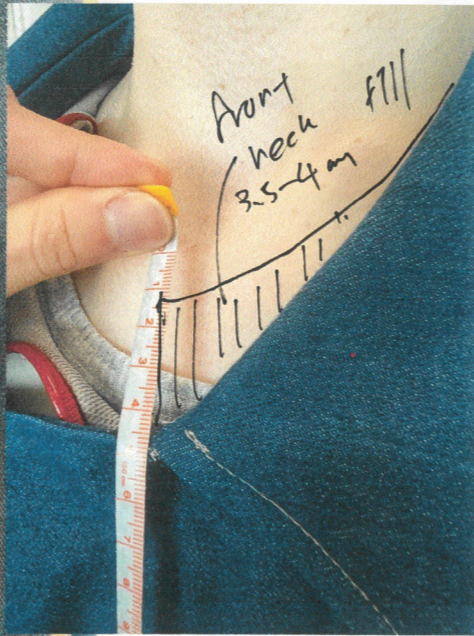
make hodie / padded  
B-11A pants

1. fit. make hodie height  
higher. (+2cm).  
make pants fit more smooth &  
natural around hip.  
2. design - more drape  
around hodie.



FINAL SAMPLE - VINTAGE MILITARY GRAPHIC

collar stand  
5cm



British dispatch rider  
- 1st fitting

stand ↑ 5cm  
collar + 3.2cm



- Fit
- collar & stand higher. (5cm, 3.2cm)
  - neck All (front), deep (back) 4cm
  - styleline - pockets / belt line.
  - ⊕ fold collar / long epaulette