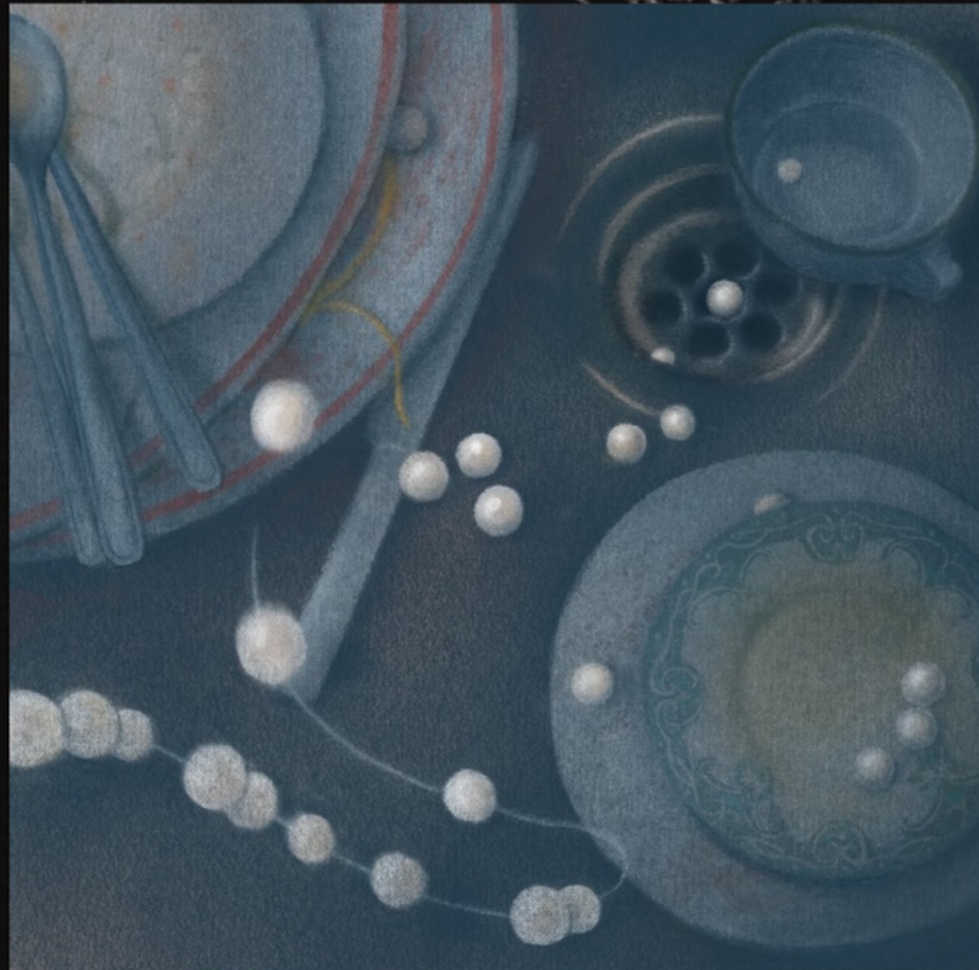


MOON SHELL

BESPOKE TAILORING
YEAR 3 FINIAL PROJECT

MAJOR PROJECT REALISATION

LUOYI ZHANG
20003243



JACKET MEASUREMENT

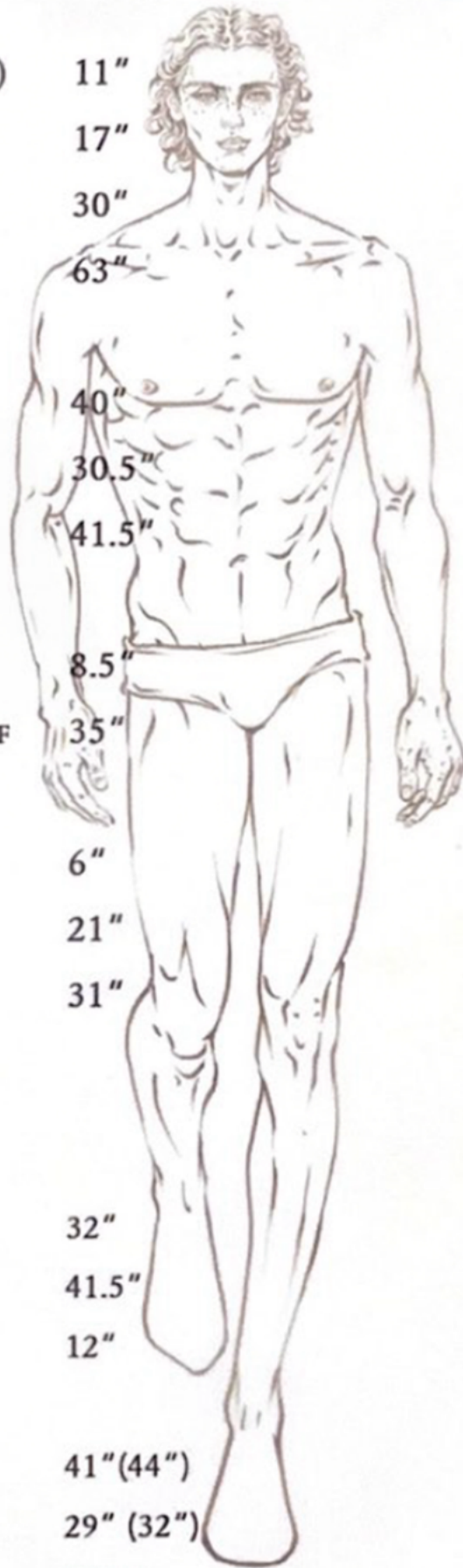
NAPE TO ARMHOLE (SCYE DEPTH) 11"
 NAPR TO NATURAL WAIST 17"
 NAPR TO JACKET HAM 30"
 NAPE TO FLOOR 63"

CHEST 40"
 WAIST 30.5"
 SEAT 41.5"
 X BACK 8.5"
 HALF X BACK TO ELBOW TO CUFF 35"

SHOULDER 6"
 SHOULDER TO ELBOW 21"
 SHOULDER TO WRIST 31"

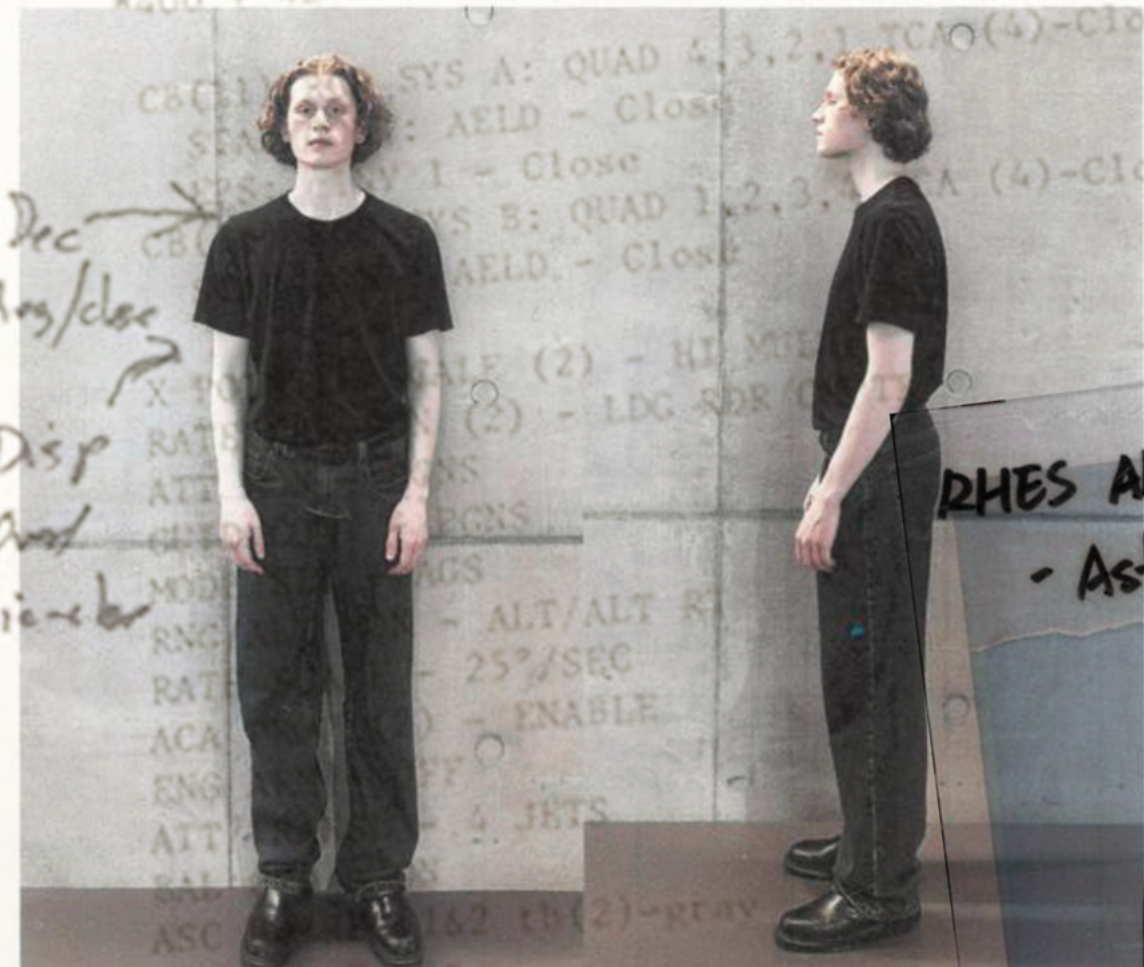
TROUSER MEASUREMENT

TROUSER WAIST (WITH SHOE) 32"
 SEAT (WEITH SHOE) 41.5"
 BODY SID 12"
 OUTSIDE LEG 41"(44")
 INSIDE LEG 29" (32")
 KNEE 21.5"
 HEM 16"



123:53
TIG-30

*400 + 4E Lunar Align

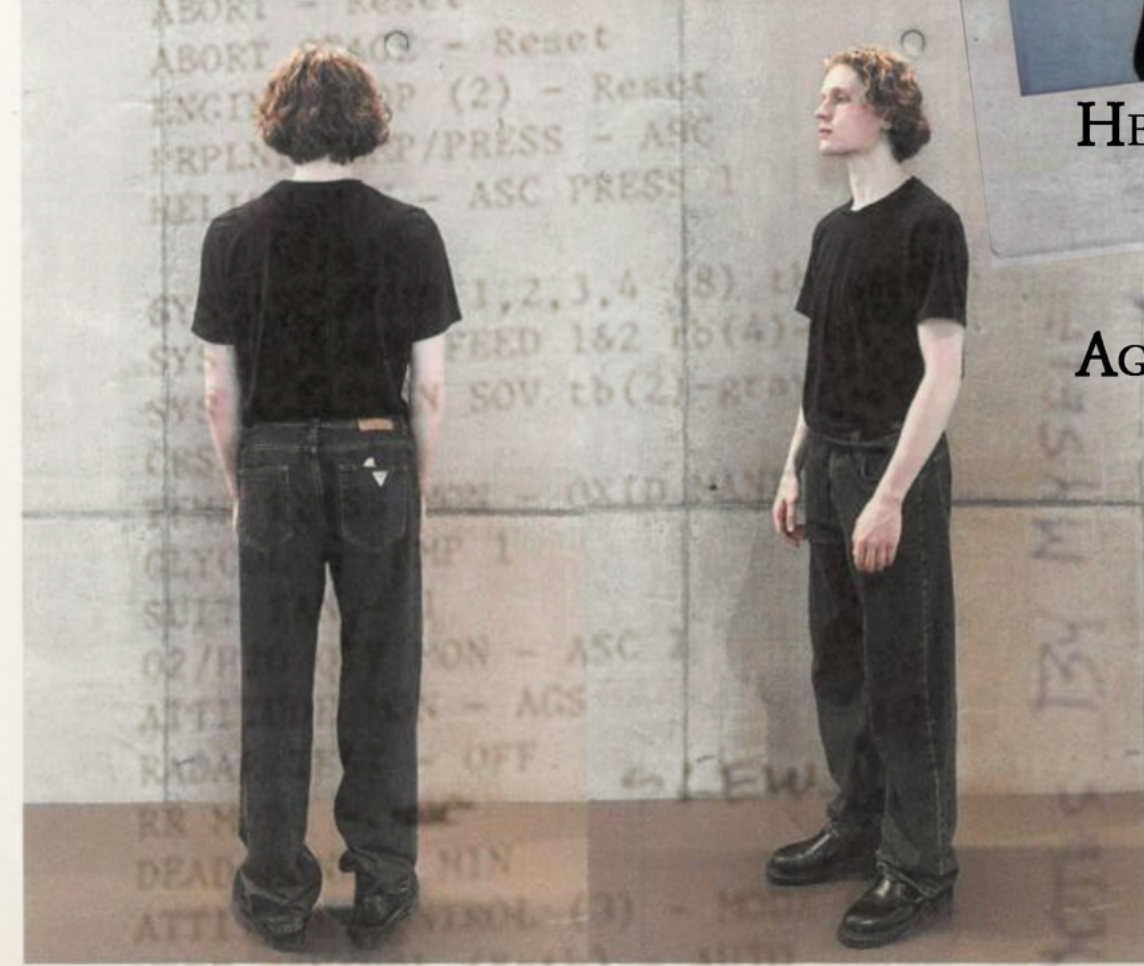


RHES ARMSTRONG
- Astronaut -



HEIGHT
183CM

AGE
26





MOTHER

- Jewellery Collector -

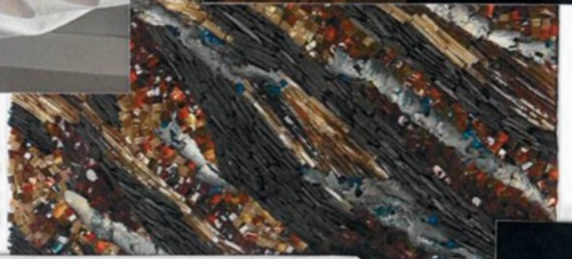
MILKY WAY.



"DIVINS JORAUX"



Mom Wearing Fine Tell Sours



PHES ARMSTRONG.

- Astronaut -



-DOUTINE-



STAR TRACK



Daily Outfit.

- Like the elegant design with embroidery



the Observing the Universe

Some of his collection.

(from) PHES VAN NOTEN, ROBERT WUN,



- High-Quality Suits.
- Leather Gloves
- Jewellery Rings.



- He also loves bending, which is beautiful and sparkling.

- Because they shine like the STAR CLUSTERS and NEBULAE he encounters, and are full of glamour.

M42 177b. The Orion Nebula.



MC Large Magellanic Cloud.



STELLAR. "SIRIUS"



STAR CLUSTED.



Rosette Nebula. M42 177 M42 177





RHES IS A HIGHLY RESPECTED SPACE CAPTAIN—STEADY AND RESERVED—WHO HAS LED NUMEROUS CRITICAL INTERSTELLAR MISSIONS. HE IS A PILLAR OF THE FLEET, KNOWN AMONG HIS PEERS AS THE “SILENT NORTH STAR.” HIS UNIFORM IS ALWAYS ADORNED WITH SIMPLE MILITARY INSIGNIA AND FUNCTIONAL ACCESSORIES—MINIMALIST AND RESTRAINED—THE STANDARD IMAGE SHAPED BY HIS PROFESSION.

YET BEHIND THIS TAILORED UNIFORM LIES A LESSER-KNOWN SIDE OF HIM.

HIS MOTHER IS A PRIVATE JEWELRY COLLECTOR, OBSESSED WITH ANTIQUE PEARLS, NATURAL MOTHER-OF-PEARL, AND EXQUISITE CRAFTSMANSHIP. AS A BOY, RHES OFTEN LINGERED BY HIS MOTHER’S JEWELRY TABLE, WHERE THE GEMS SHIMMERED UNDER THE LIGHT LIKE TINY STARS, FORMING A MINIATURE UNIVERSE. IT WAS THERE THAT HIS SENSITIVITY TO BEAUTY AND ORNAMENTATION QUIETLY TOOK ROOT.

YEARS SPENT NAVIGATING DEEP SPACE, SURROUNDED BY THE SHIFTING LIGHTS OF GALAXIES, NEBULAE, AND PLANETS, CONTINUOUSLY RESHAPED HIS AESTHETIC PERCEPTION. HE MOVED BEYOND PURELY RATIONAL AND FUNCTIONAL PURSUITS, DEVELOPING AN APPRECIATION FOR A KNIGHTLY SENSE OF CEREMONY—AN INTRICATE BEAUTY THAT CARRIES WEIGHT, HISTORY, AND SYMBOLISM. HE SPENT TIME IN THE FLEET’S LIBRARY STUDYING HISTORICAL GARMENTS, EXPLORING THE STRUCTURE OF NAVAL UNIFORMS AND THE LINES OF KNIGHT ARMOR, WHICH ECHOED INTRIGUINGLY WITH HIS MOTHER’S TREASURED JEWELS.

FIG.1 NAVY, KNIGHTS, ASTRONAUTS





THE BRITISH NAVY
UNDER NAPOLEON
1777-1815



- BICORNE HAT



- EPAULETTES



- DOUBLE BREAST



- FROCK COAT

NAPOLEONIC UNIFORMS FEATURED A FITTED CUT WITH HIGH WAISTLINES, NARROW SLEEVES, AND SHAPED CHEST PANELS. CUFFS, COLLARS, AND EPAULETTES WERE OFTEN DECORATED WITH GOLD THREAD, HIGHLIGHTING PRECISE CONSTRUCTION AND DETAILING.

IN THE EARLY 19TH CENTURY, UNIFORMS BECAME MORE PRACTICAL, WITH LOOSER SILHOUETTES AND A SHIFT TOWARD STANDARDIZED DESIGNS. DOUBLE-BREADED FRONTS AND STRUCTURED SHOULDERS BECAME TYPICAL, CREATING A SHARPER OVERALL LOOK. DEEP NAVY REMAINED THE MAIN COLOR, ACCENTED BY METALLIC BUTTONS AND MINIMAL ORNAMENTATION FOR VISUAL CLARITY AND CONSISTENCY.



Prinz Adalbert
von Preussen.



* HIGH - WAISTED
LONG COATS.

STRUCTURED
SHOULDER.

EPAULETTE
DECORATIONS.

METAL
BUTTONS.

LAPEL AND
SAILOR COLLARS

CUFF
DECORATIONS

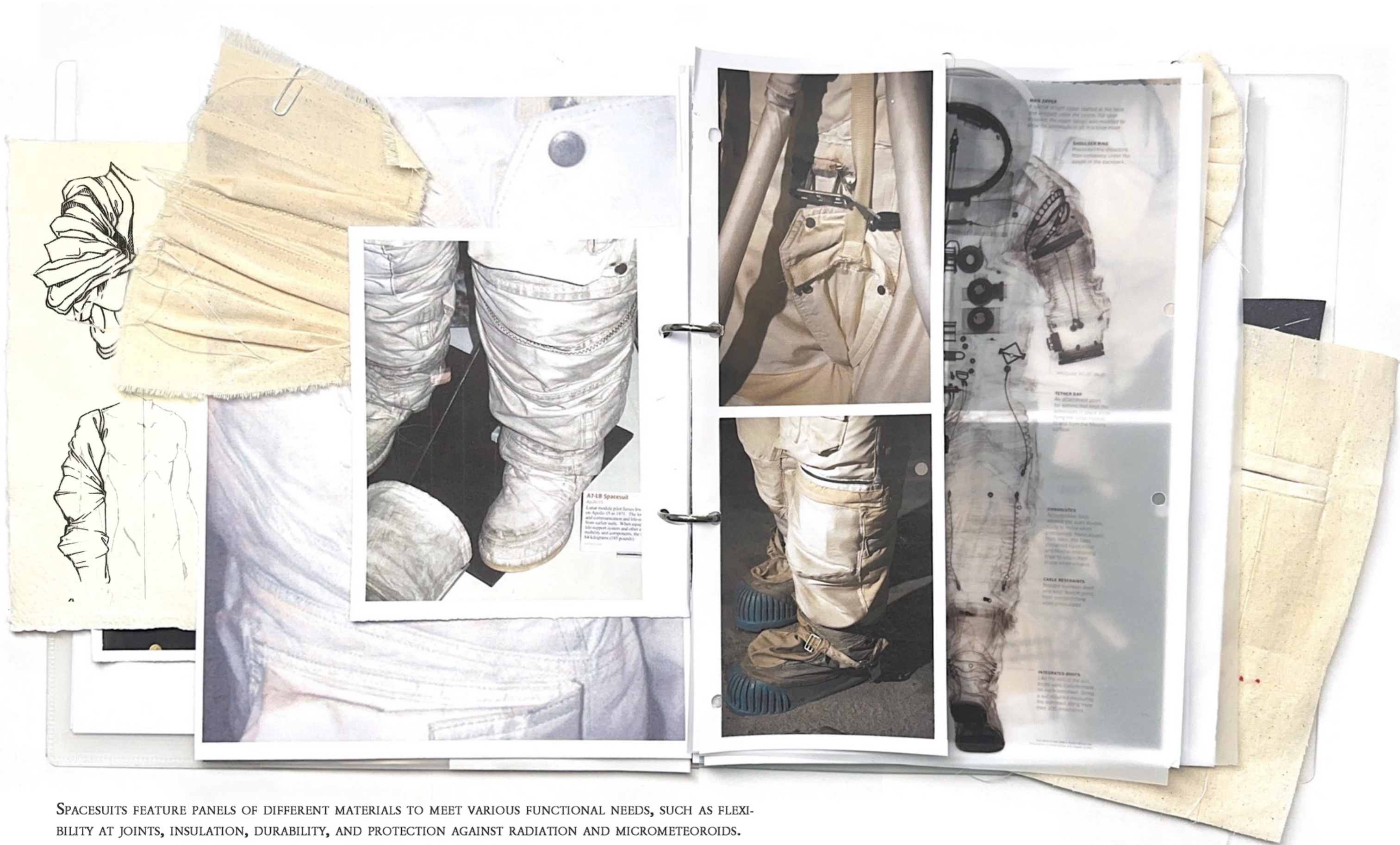
FITTED
WAISTLINE

4917
NIG

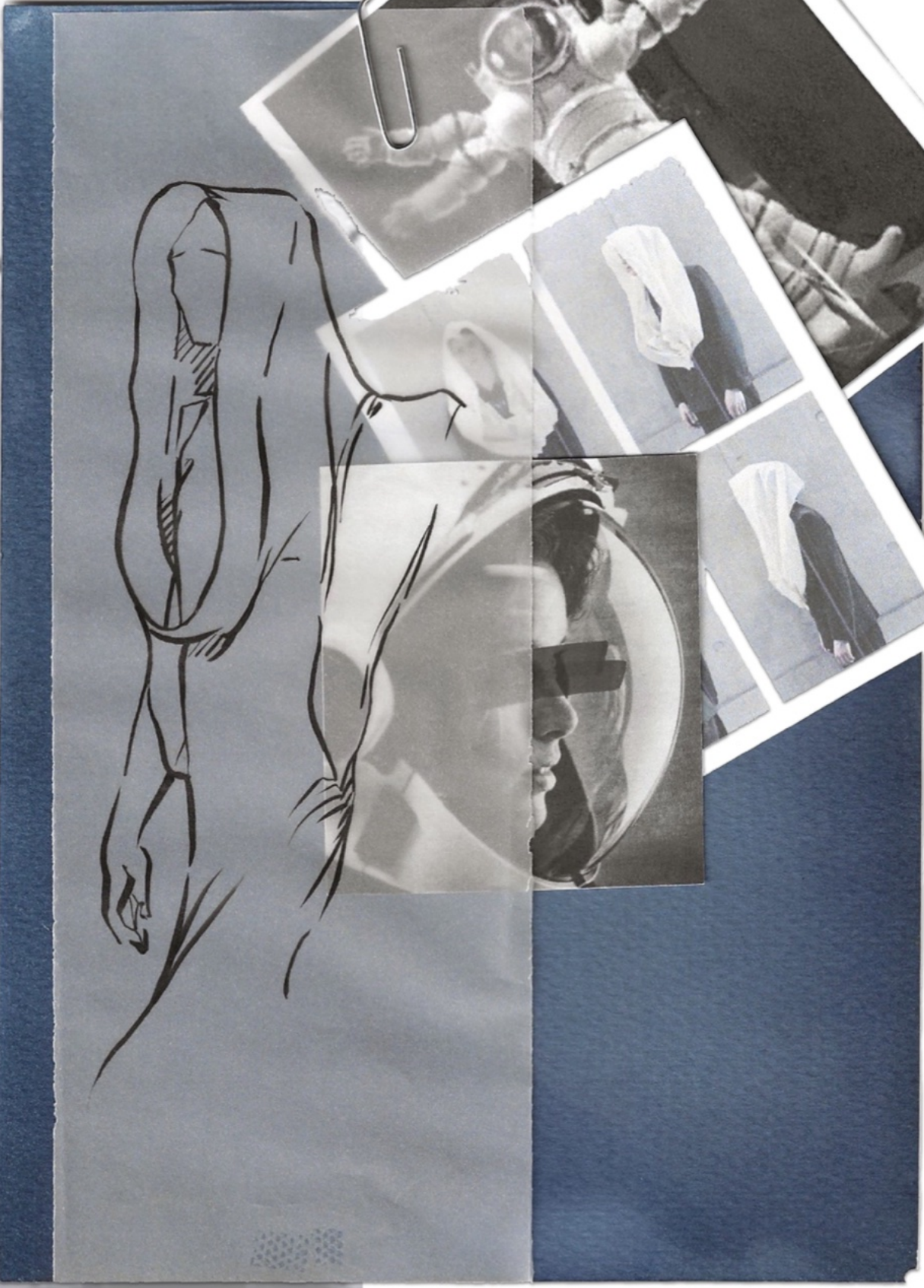
Phot. F. Urbahns, Kiel



KRIEGSMARINE UNIFORMS ARE CHARACTERIZED BY SHARP SILHOUETTES, WITH STRUCTURED SHOULDERS, CINCHED WAISTS, AND DOUBLE-BREADED COATS THAT EMPHASIZE CLEAN LINES AND PROPORTION. KEY DETAILS INCLUDE METAL BUTTONS, EPAULETTES, CUFF TRIMS, AND EMBROIDERED INSIGNIAS, OFFERING BOTH VISUAL IDENTITY AND ORNAMENTAL VALUE. TYPICAL COLORS ARE NAVY, DARK GRAY, AND BLACK, USING WOOL OR SUITING FABRICS WITH STRONG STRUCTURE



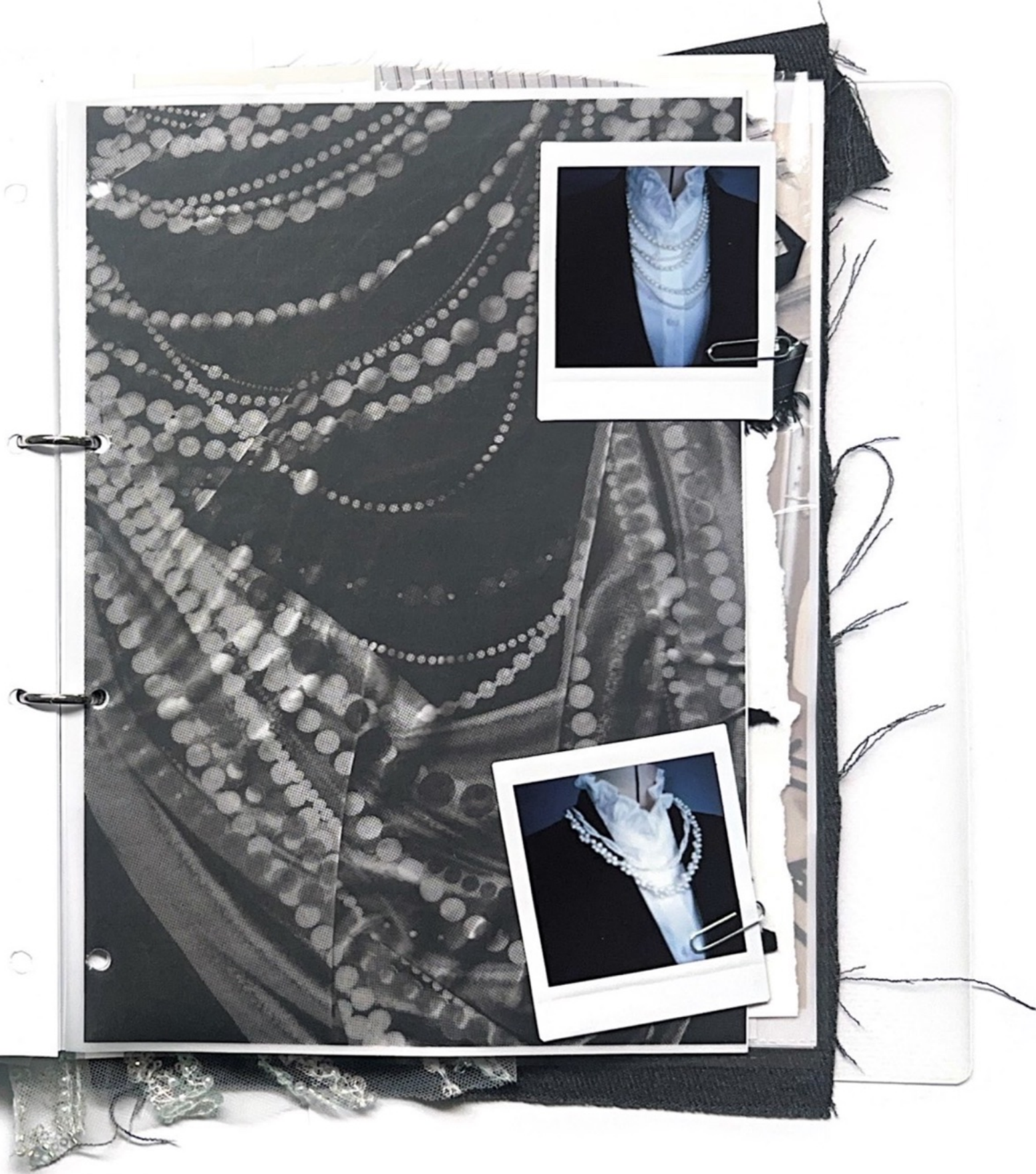
SPACESUITS FEATURE PANELS OF DIFFERENT MATERIALS TO MEET VARIOUS FUNCTIONAL NEEDS, SUCH AS FLEXIBILITY AT JOINTS, INSULATION, DURABILITY, AND PROTECTION AGAINST RADIATION AND MICROMETEORIODS.

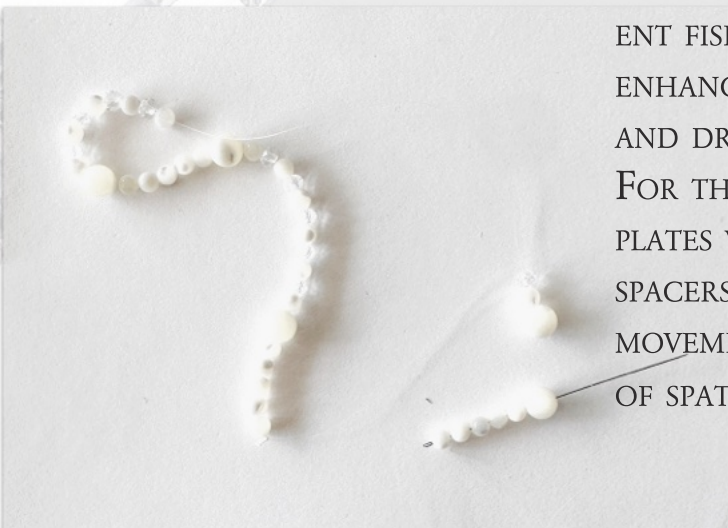
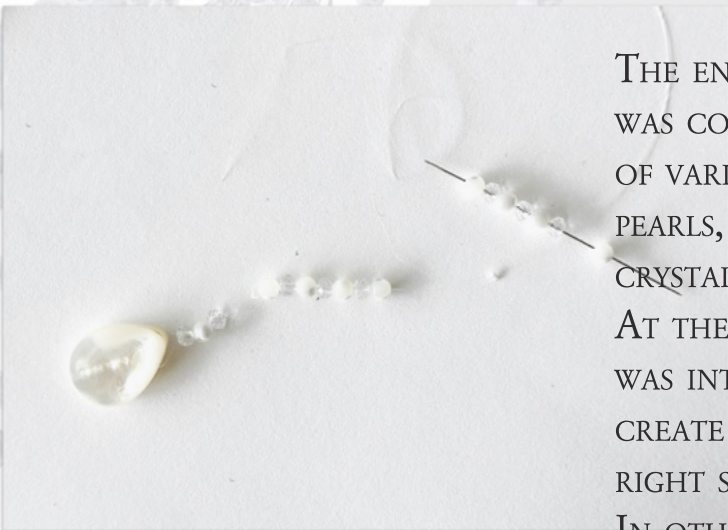


THE ICONIC IMAGE OF AN ASTRONAUT IS LARGELY DEFINED BY THE VOLUMINOUS SUIT AND THE DISTINCTIVE ROUND HELMET — A FORM THAT HAS REMAINED CONSISTENT THROUGH COUNTLESS ITERATIONS. BY ANALYZING ITS STRUCTURAL AND FUNCTIONAL FEATURES, I TRANSLATED THE REFLECTIVE SURFACE, PROTECTIVE LAYERING, AND AERODYNAMIC FORM INTO GARMENT DETAILS. THROUGH ABSTRACT AND ARTISTIC TRANSFORMATION, THE VISUAL ESSENCE IS REINTERPRETED WHILE PRESERVING ITS ENGINEERED AESTHETIC.



FIG.2 PEARLS, SHELLS, CRYSTALS





THE ENTIRE ACCESSORY PIECE WAS CONSTRUCTED USING BEADS OF VARIOUS SIZES, INCLUDING PEARLS, MOTHER-OF-PEARL, AND CRYSTAL.

AT THE NECKLINE, SOFT WIRE WAS INTERWOVEN WITH BEADS TO CREATE A SCULPTURAL AND UPRIGHT STRUCTURE.

IN OTHER SECTIONS, TRANSPARENT FISHING LINE WAS USED TO ENHANCE A SENSE OF FLUIDITY AND DRAPE.

FOR THE HEM, SMALL METAL PLATES WERE INCORPORATED AS SPACERS TO GENERATE RHYTHM, MOVEMENT, AND A SUBTLE SENSE OF SPATIAL EXTENSION.

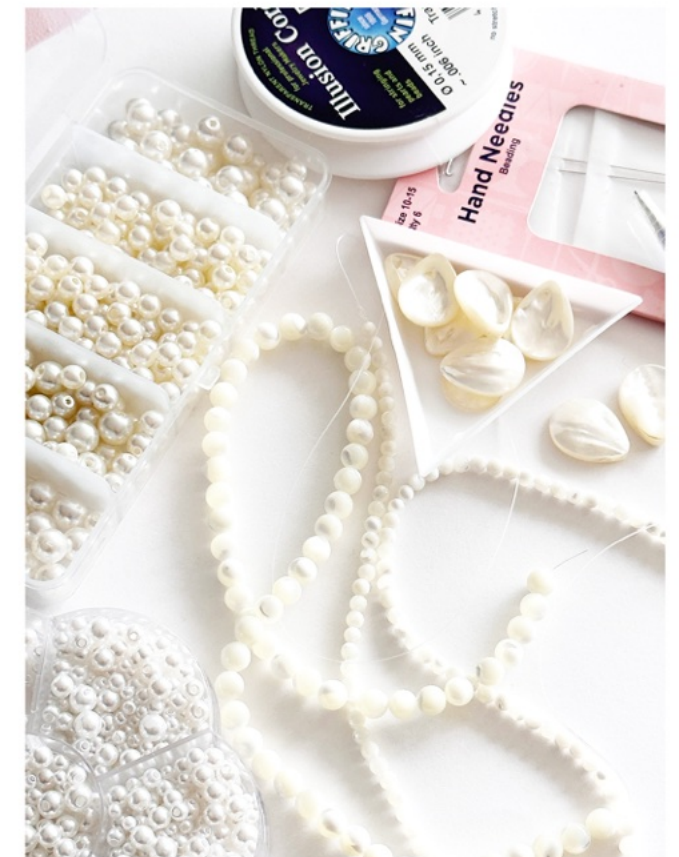
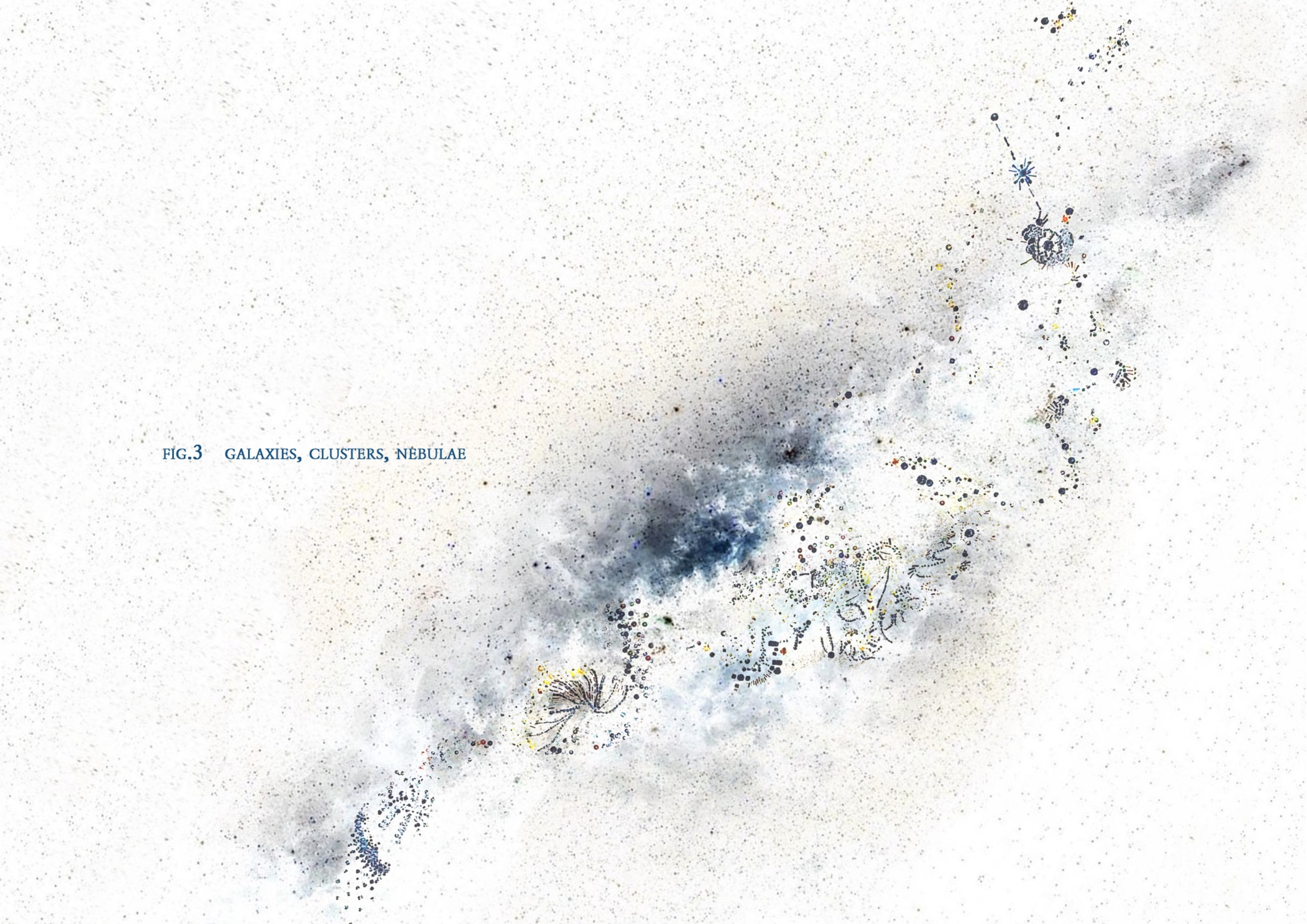
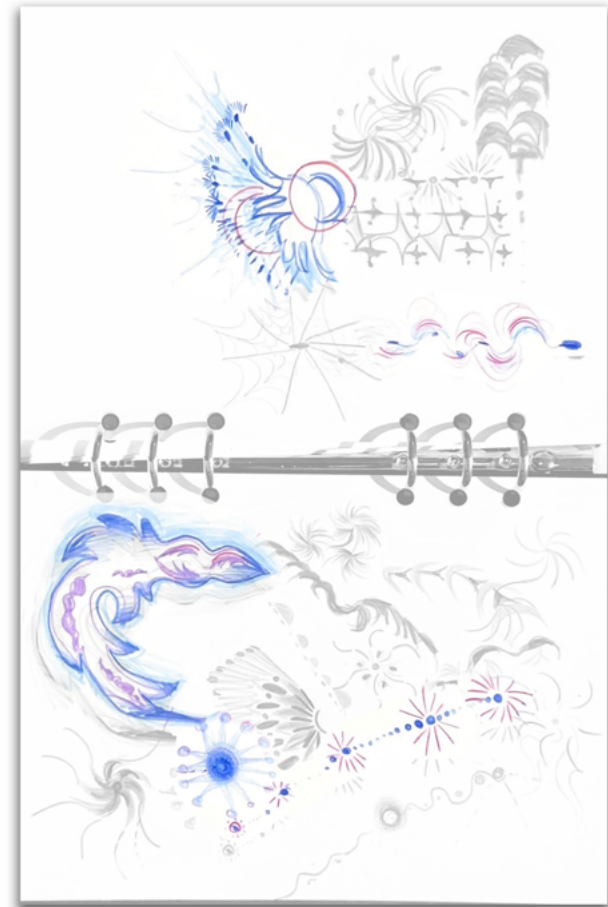


FIG.3 GALAXIES, CLUSTERS, NEBULAE

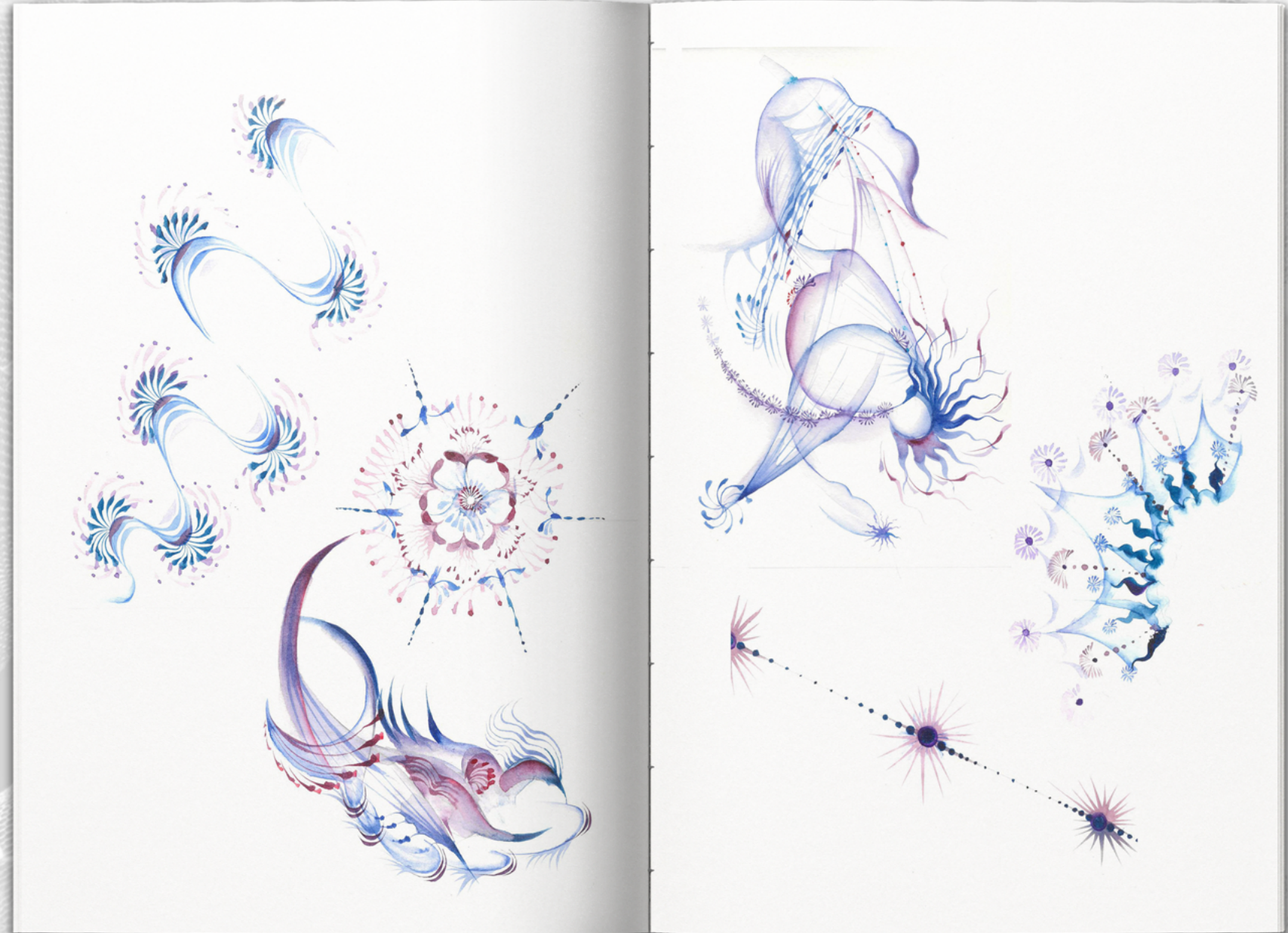


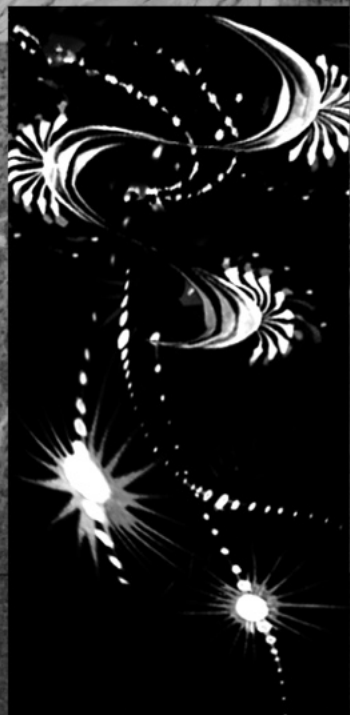


- MEIZHU HUO (MAYJUNE)
- ILLUSTRATION AND VISUAL MEDIA.
- 21020143

I INVITED MEIZHU HUO, TO COLLABORATE ON THIS PROJECT. HER WORK OFTEN EXPLORES SYMBOLIC AND DREAM-LIKE IMAGERY THROUGH THE USE OF VARIOUS MEDIA.

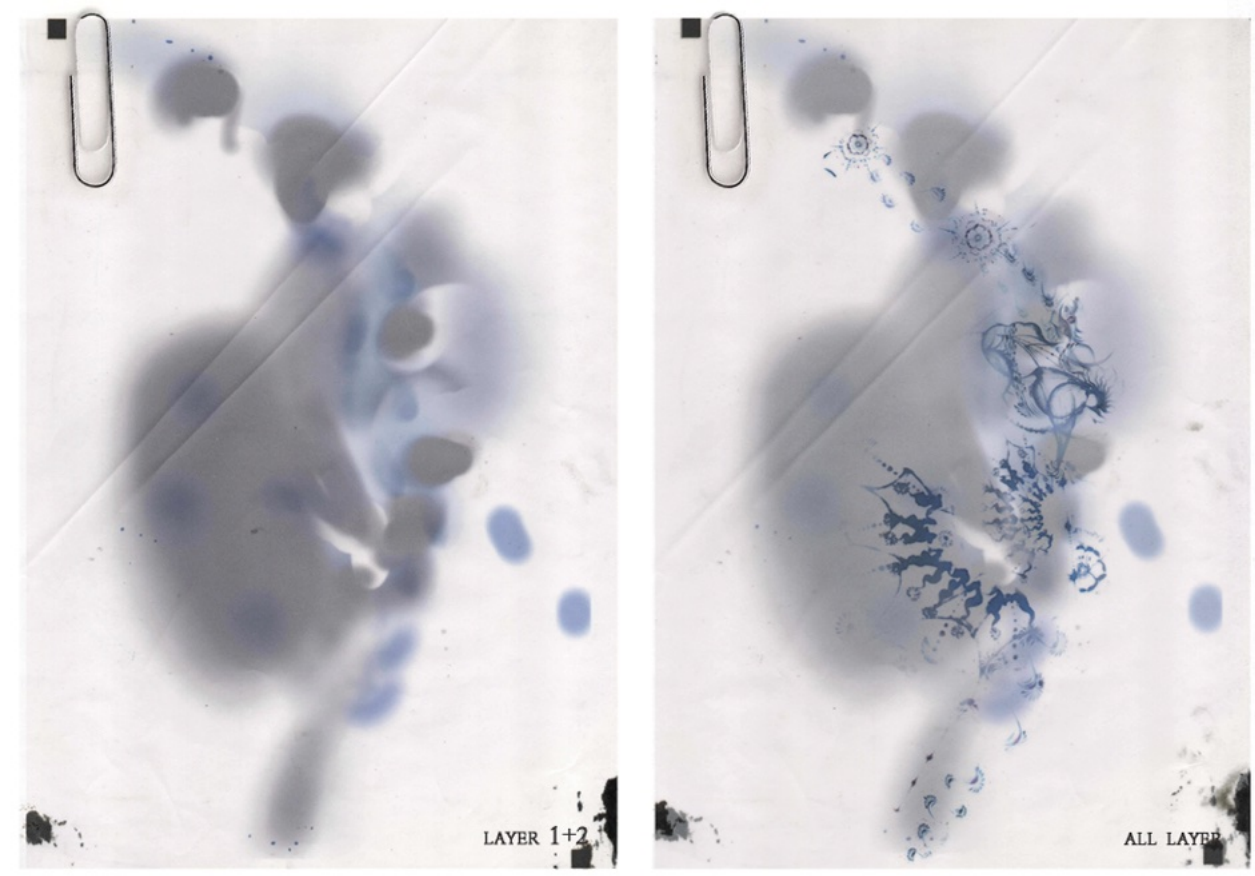
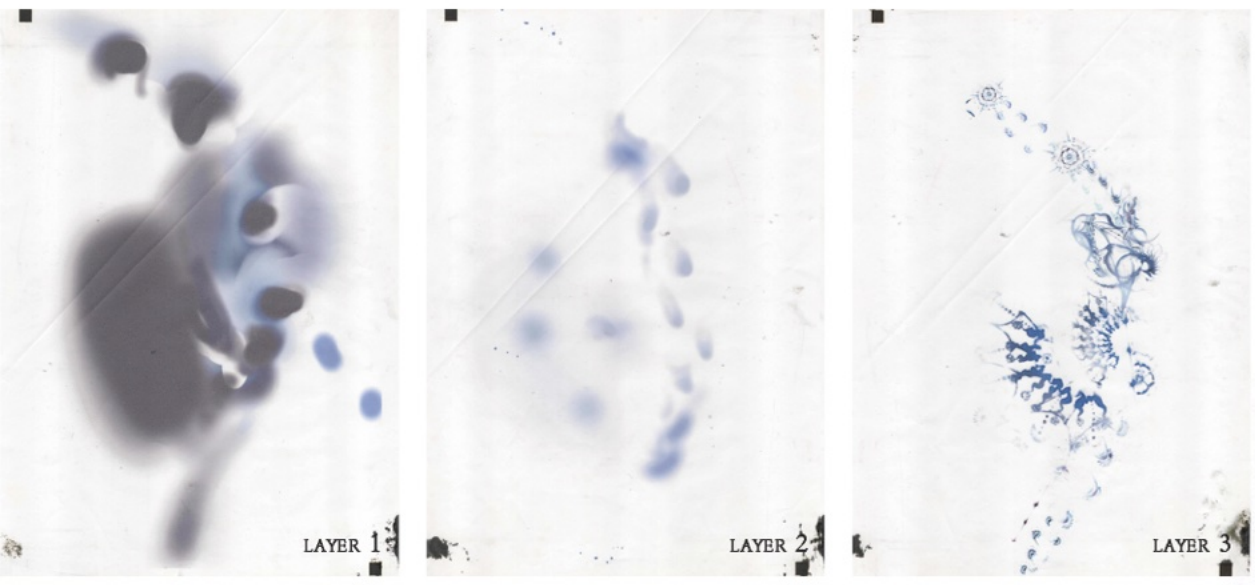
FOR THIS COLLABORATION, SHE DESIGNED EMBROIDERY MOTIFS INSPIRED BY CELESTIAL ELEMENTS SUCH AS NEBULAE AND THE MILKY WAY. BY COMPOSING AND ARRANGING THESE FORMS, SHE BROUGHT A SENSE OF RHYTHM AND FLUIDITY TO THE FINAL DESIGN, GIVING THE WORK AN ABSTRACT YET POETIC VISUAL PRESENCE.



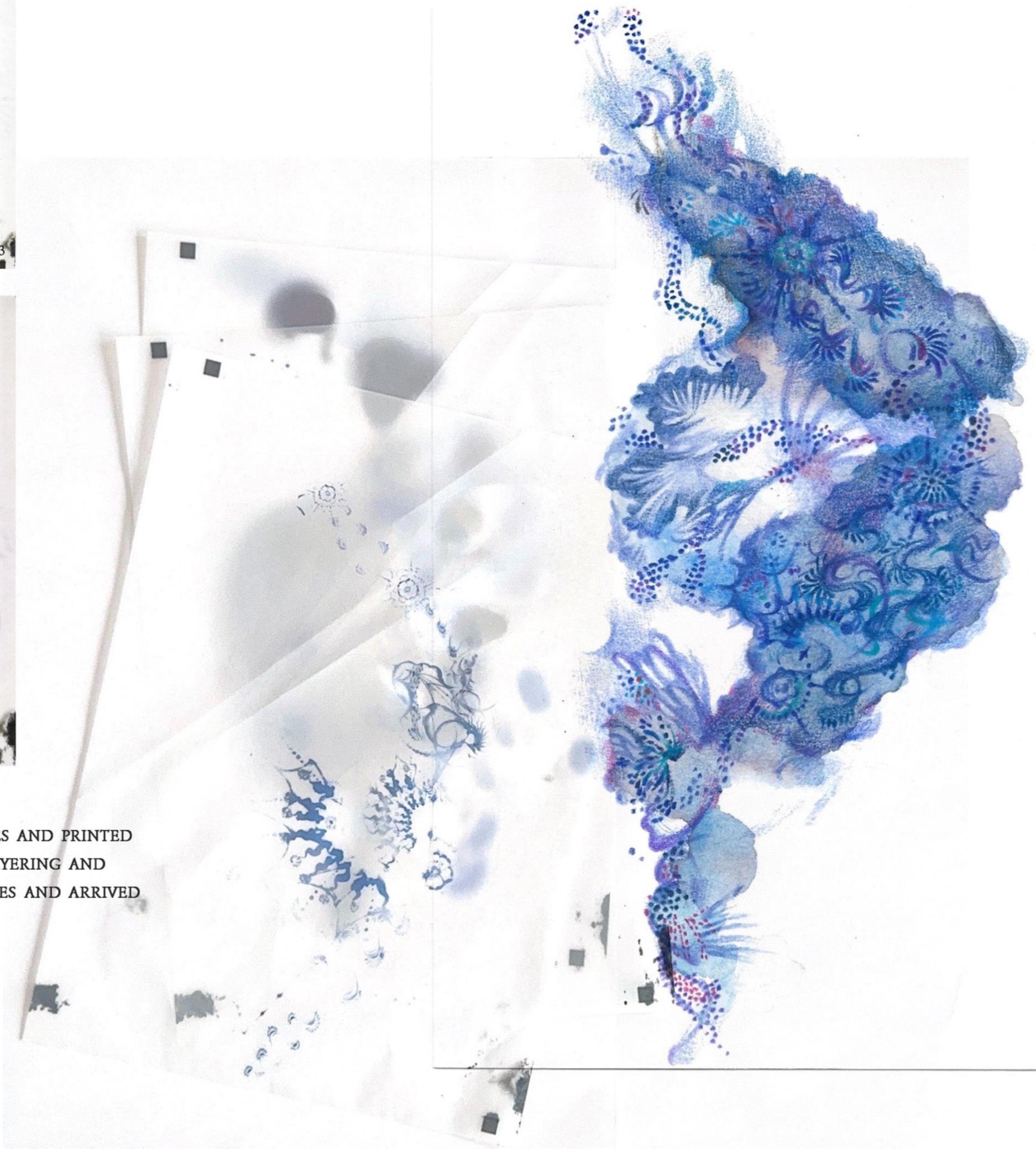


STARTING WITH SEVERAL BASE MOTIFS, WE EXPLORED VARIATIONS THROUGH PHOTOSHOP TECHNIQUES SUCH AS DUPLICATION, SCALING, AND GRADIENT TRANSITIONS. THESE MANIPULATIONS WERE USED TO COMPOSE A SERIES OF FRAGMENTED GRAPHIC ARRANGEMENTS. AFTER MULTIPLE ROUNDS OF VISUAL EXPERIMENTATION AND ADJUSTMENTS, THE FINALIZED DIGITAL DRAFT FOR EMBROIDERY WAS CONFIRMED.



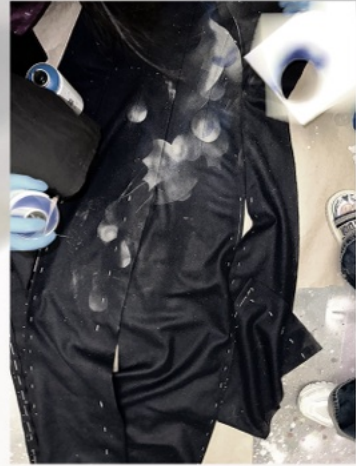


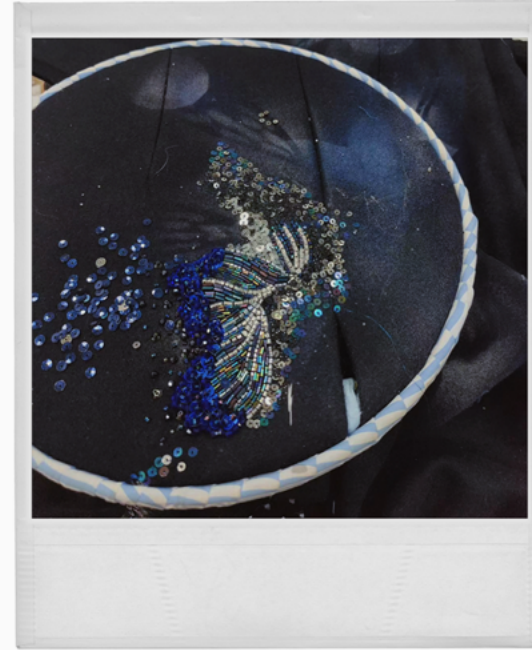
I DIGITALLY RENDERED MULTIPLE SPRAY PAINT TEXTURES AND PRINTED THEM ON TRANSLUCENT TRACING PAPER. THROUGH LAYERING AND COMPOSITION, I EXPLORED DIFFERENT VISUAL OUTCOMES AND ARRIVED AT THE MOST STRIKING EFFECT FOR MY DESIGN.



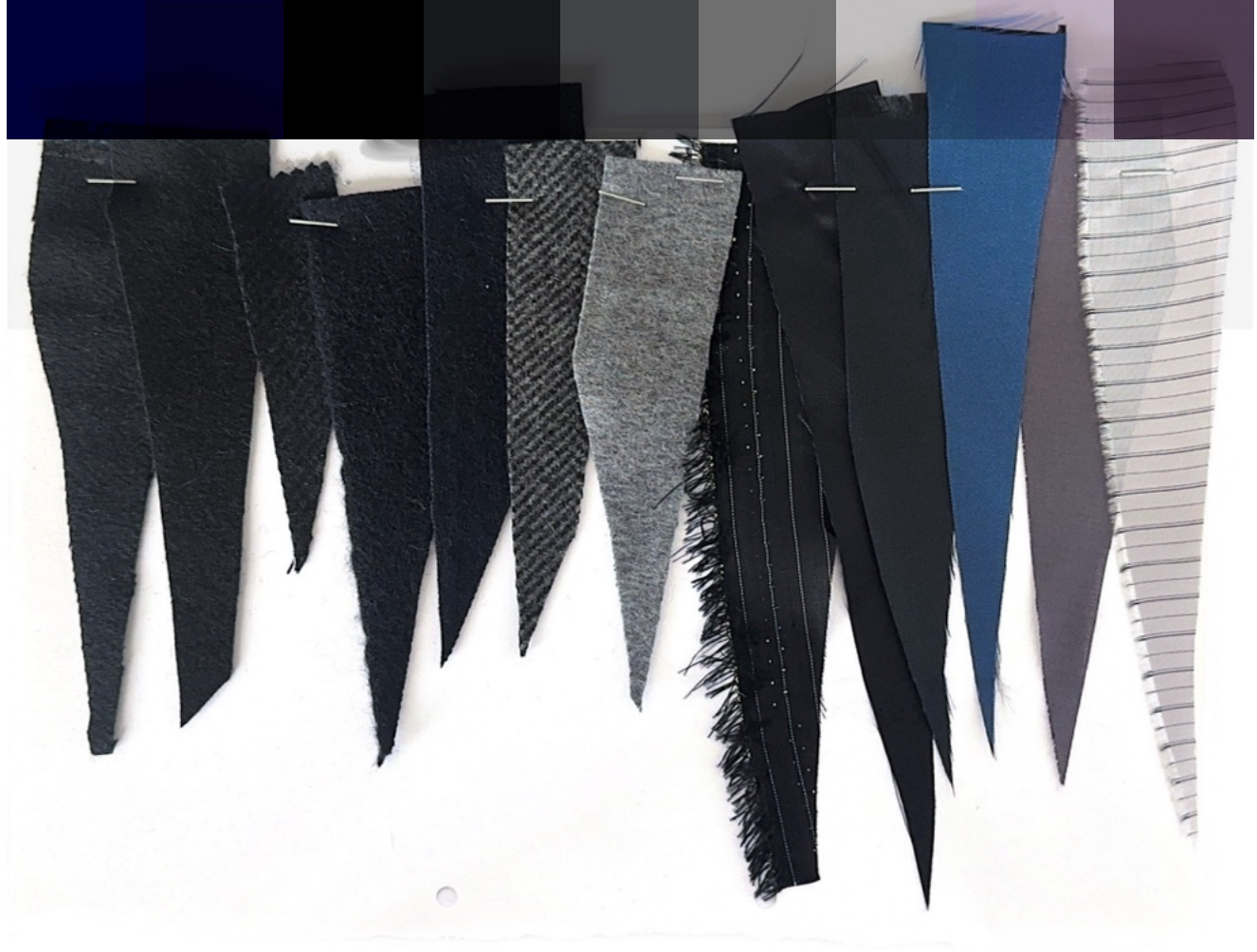
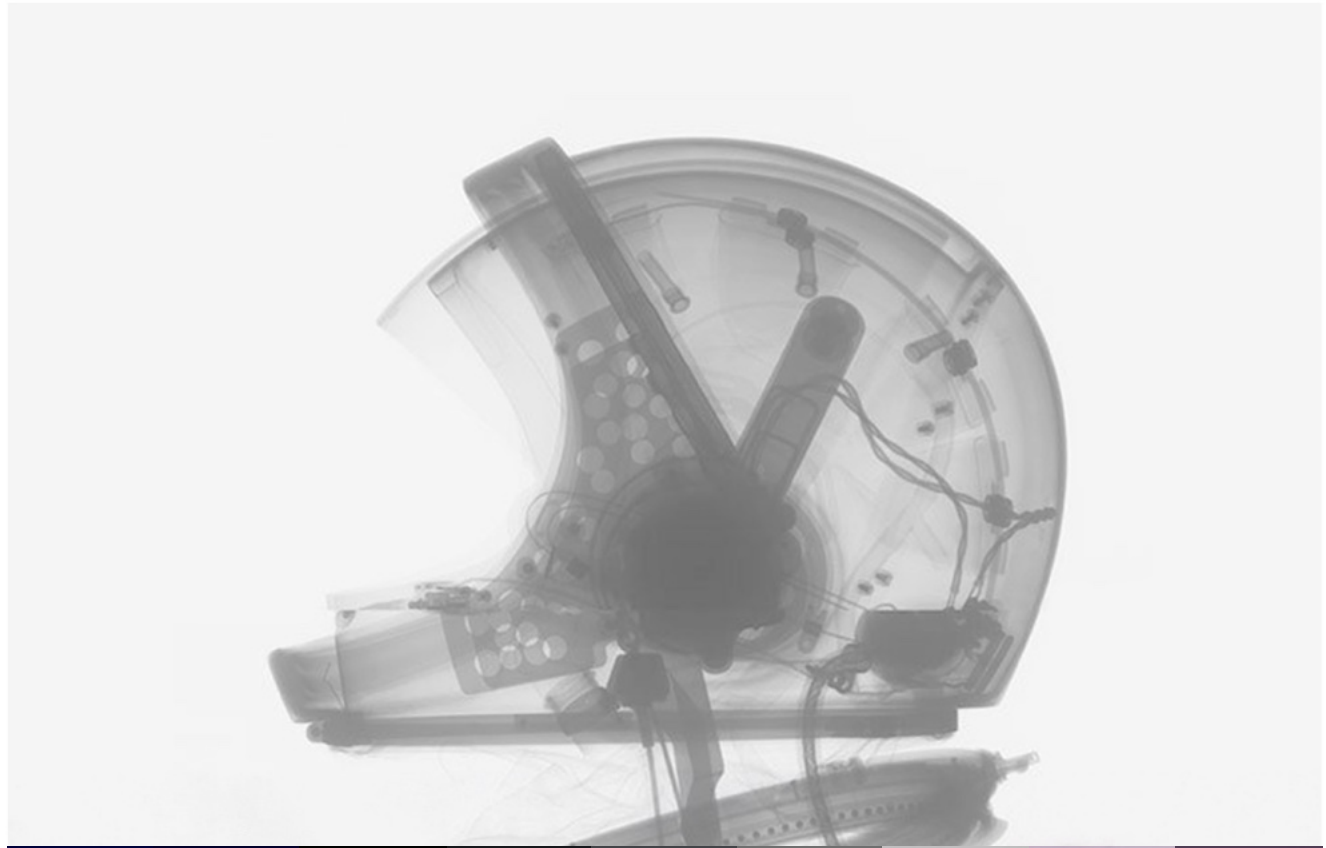


Handmade
Dresses for
Wedding
Ceremonies



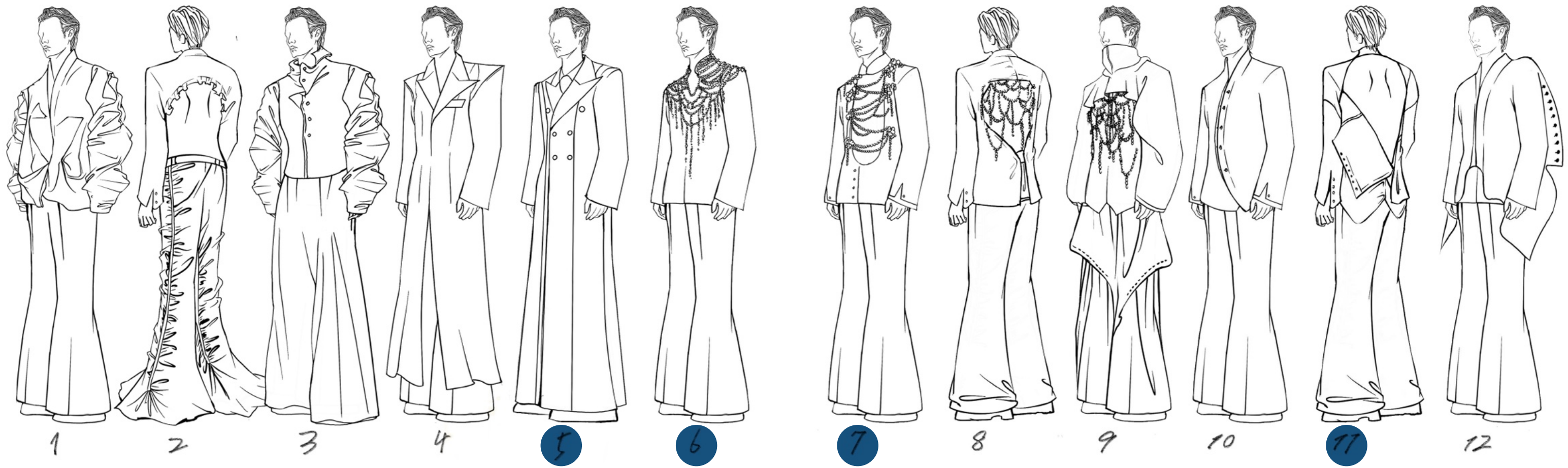








I INCORPORATE NON-TEXTILE MATERIALS SUCH AS PEARLS, MOTHER-OF-PEARL AND CRYSTALS INTO MY DESIGNS TO ENRICH THE VISUAL AND TACTILE EXPERIENCE OF THE GARMENTS. THESE MATERIALS ARE PRESENTED THROUGH HANDMADE ACCESSORIES AND DECORATIVE CRAFTSMANSHIP, GIVING THE PIECES GREATER EXPRESSIVE POWER.



24 LOOKS IN TOTAL

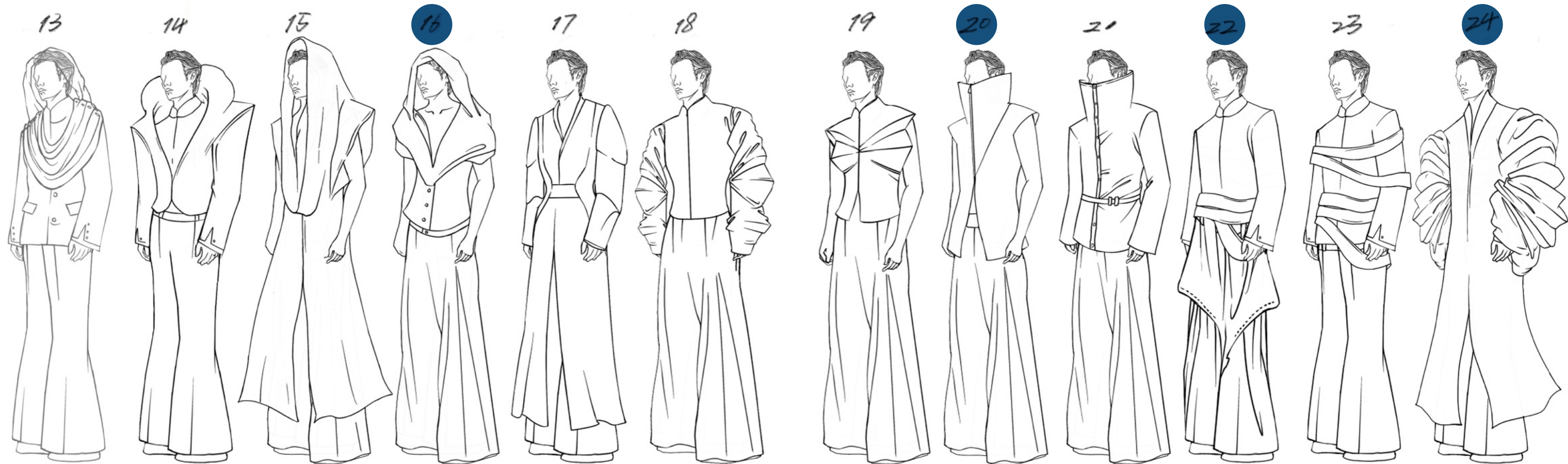






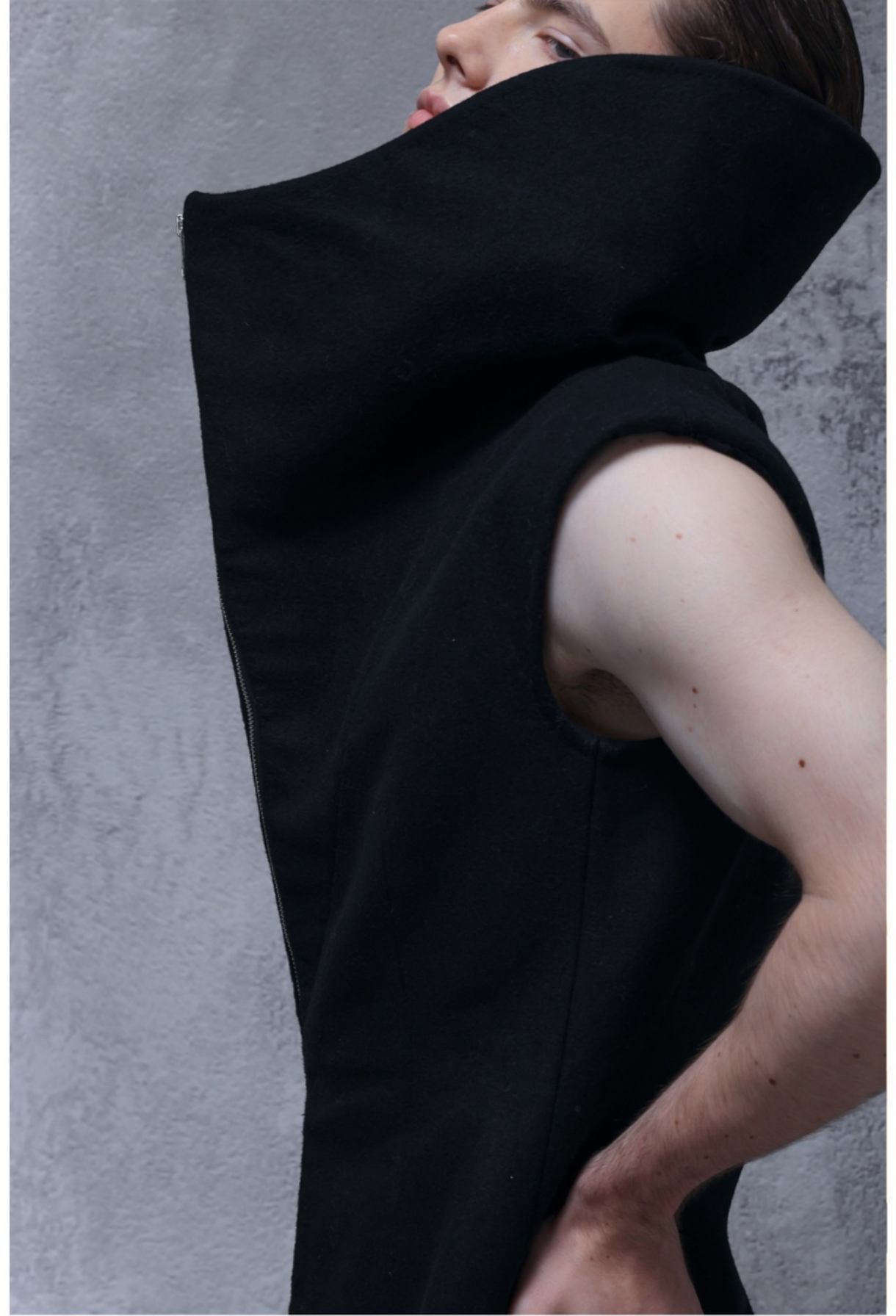
FIG.4 ME, MINE, MYSELF















HE QUIETLY COMMISSIONED THIS OUTFIT—NOT TO MAKE HEADLINES OR FOR A PUBLIC CEREMONY, BUT FOR HIS FINAL ACT: THE FORMAL RETIREMENT CEREMONY AS FLEET COMMANDER. IT WOULD BE AN HONORABLE FAREWELL HELD AT THE SPACEPORT, ATTENDED ONLY BY HIS CLOSEST COMRADES AND FAMILY. HE CHOSE TO WEAR IT AT THIS MOMENT BECAUSE IT WAS A CEREMONY FOR HIMSELF—A DEEPLY PERSONAL GOODBYE, AND AN EXPRESSION OF RECONCILIATION WITH HIS OWN IDENTITY.

THIS IS MORE THAN JUST CLOTHING; IT IS A SYMBOLIC SHELL:

PROTECTING HIM LIKE ARMOR, MARKING HIS HONOR LIKE A NAVAL UNIFORM, AND SHINING LIKE THE STARS IN HIS MOTHER'S JEWELRY BOX—REMINDING HIM OF THE CHILD WHO ONCE GAZED AT THOSE LIGHTS.

—

THIS GARMENT BELONGS TO HIM:
MY IDENTITY, MY MEMORY, MYSELF.



SPECIAL THANKS :

ALEX HALL/ARTYOM/DANIEL POULSON/
DASHAN WANG/GABRIEL COLEMAN/
MAGDSLENA HANDWERKER/MEIZHU HUO/
YANHONG LI/ZHICHAO XU

MOM/DAD/MYSELF

THANKS TO USAID FOR MY FABRIC SPONSORSHIP!

THANK YOU TO MY MENTORS AND EVERYONE WHO
SUPPORTED ME

- BECAUSE OF YOU, I WAS ABLE TO WEAVE THIS
COSMIC DREAM INTO TANGIBLE FABRIC.