

ANISHA KOHLI

Quiet Luxury With A Soul





La Vie En Rose

A Brand Concept by Anisha Kohli

Not because life was rosy, but because she dares to see it this way.

I believe in clothing that speaks to the soul. That remembers who you were before the world told you otherwise.

This collection is built on emotional memory: soft silks and chiffons that feel like breath, velvet that holds the weight of healing, ivory that speaks of silence made sacred.

I design for moments, for the woman who wears her becoming like a garment. Who walks not to be seen, but to be felt.

“She didn’t walk away from the world, she danced into her own.”

-Anisha Kohli



Consumer Profile

*“She knows how it feels to shush herself.
Now, she dresses in ways that whisper: I remember who I am.”*

She is:

- Mid 20s to early 40s
- Emotionally conscious
- Timeless and Chic
- Annual income: €150,000+
- Prefers slow fashion, intentional living
- Seeks elegance with softness, sacredness in details
- Healing, evolving, remembering her voice

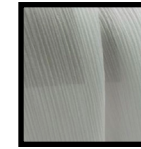
From Self to Form: Concept Development

The collection began with internal sketching rituals—drawing on self, emotion and embodied memory. It was here that *La Vie En Rose* took root.

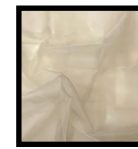
Emotion, inner child softness, a quiet power in miniature



Silk satin
chiffon



Silk chiffon



Silk organza



Suiting wool



Silk satin



trenchcoat
flare+louie fuller



silk organza

louie fuller flare



godets dress corset

gathered dress

flare

wrapped in pleats

Petit Fleur-A Bloom Within the Bloom

Petit Fleur emerged from the emotional seed of La Vie En Rose. Where the larger collection speaks of soul memory and soft visibility, Petit Fleur draws closer-into intimacy, detail and velvet tenderness.

She is about emotional protection made beautiful

floral embroidery

structured softness

quiet devotion in silhouette

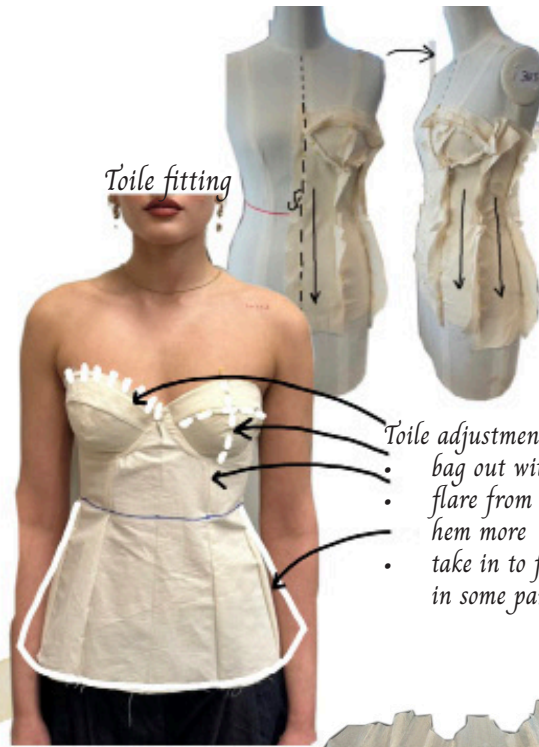


PANTONE®
11-4101 TCX
Stalactite



The Architecture Of Tenderness

Draping Process-Corsetry and Soft Structure



In the design and draping process, I learned how to get pattern pieces by taping my bra to get exact measurements for my corset in my size.



- Toile adjustments
- bag out with cut top
 - flare from waist to hem more
 - take in to fit better in some panels



This corset began as a draped sketch of protection-something that holds, without hardening. i explored the flare throughout the waist, foam shaping, rigiline on coutil and layering each panel with intention. The result became the heart of Look 2: soft and emotionally structured.

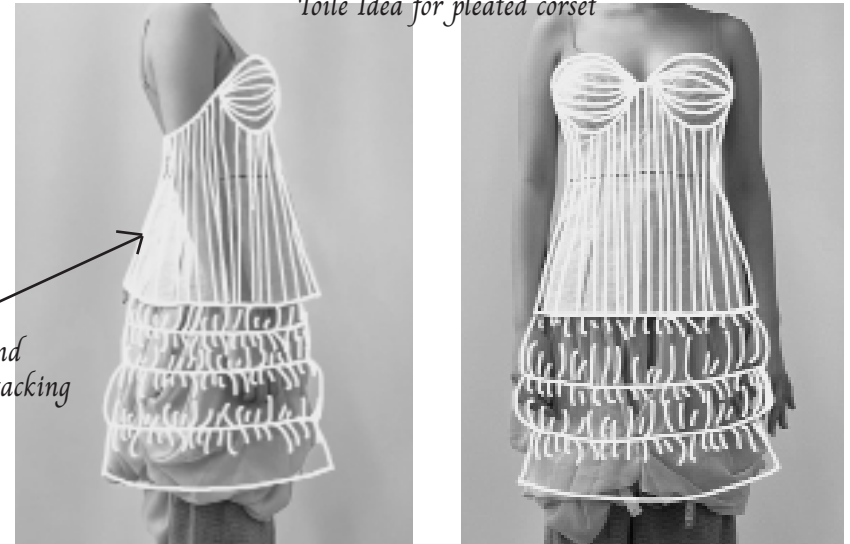
"She built softness into structure-not to hide, but to hold."
-Anisha Kohli

Becoming Form: The Pleated Corset

"Form, when it listens, becomes poetry"



Toile Idea for pleated corset



The pleats are hand sewn after hand tacking



Hand tacking pleats in place

Pinning on stand/Mounting

This corset was a natural continuation of my exploration in softness—but here, it found a more refined rhythm. The draped language of Petit Fleur transformed into pleats: gentle, even, quietly sculpted.

It wasn't about being rigid, it was about being held with grace.

Every pleat became a breath, every line a pause—not to control, but to honour form.

Echoes of Shelter: The Trench Coat

"A memory held in fabric, sewn with quiet resolve."



PANTONE®
11-4101 TCX
Stalactite



Suiting wool

This coat carries the spirit of gentle protection—not to shield from the world, but to walk through it softly. Each fold is a breath, each layer a quiet promise:

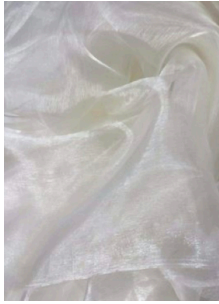
Softness can be strong and grace can be worn. A garment not of armour, but of remembering.

Line Up-Realisation in Form



The Language of Materials

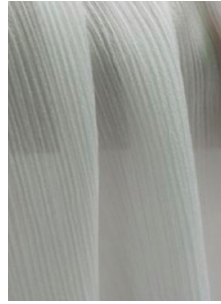
SUSTAINABLE LUXURY WITH A SOUL



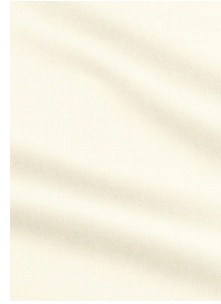
WHITE SILK SATIN
CHIFFON



EMBELLISHED
VELVET



CREAM SILK
CHIFFON



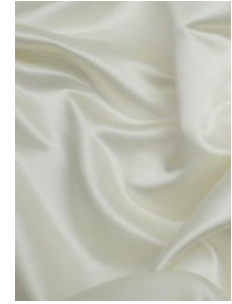
ITALIAN SUITING
WOOL



LINING



WHITE COUTIL



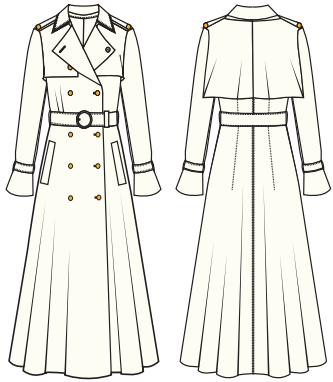
WHITE SILK SATIN

A PALETTE THAT CHOSE ME

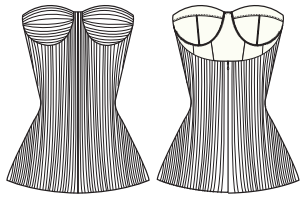


*Each fabric was chosen to feel like memory-lived in, loved, and quietly luminous
These hues found me-soft echoes of soul, serenity, and quiet warmth.*

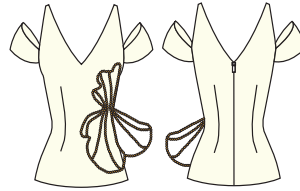
Rangeplan



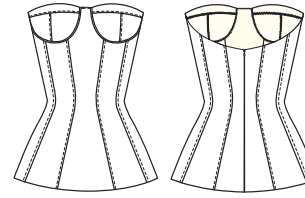
FITTED FLARED TRENCH COAT IN IVORY



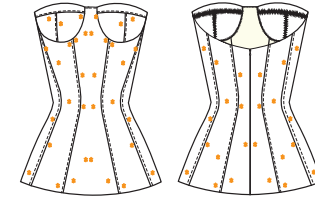
STRAPLESS PLEATED CORSET



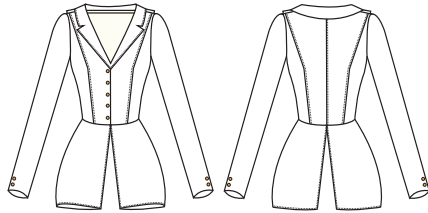
FLEUR D'OR IVORY TOP



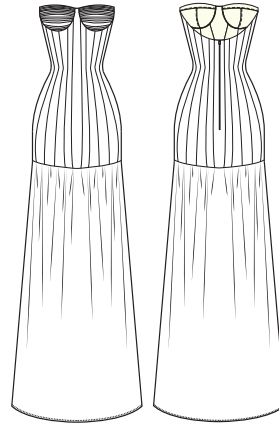
STRAPLESS CORSET IN WHITE



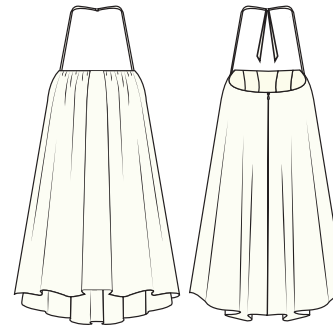
PETIT FLEUR VELVET CORSET



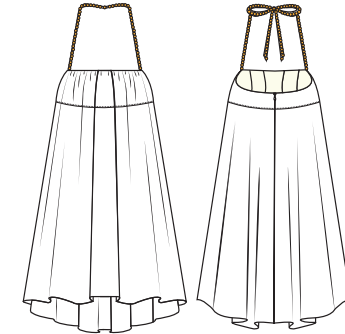
FITTED TAILORED BLAZER



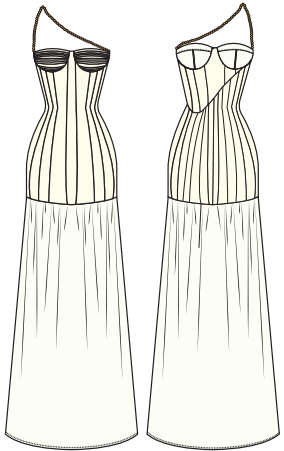
STRAPLESS PLEATED DRESS



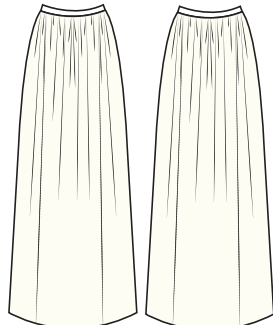
GATHERED MINI DRESS IN IVORY



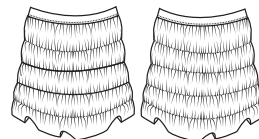
GATHERED MINI DRESS IN WHITE



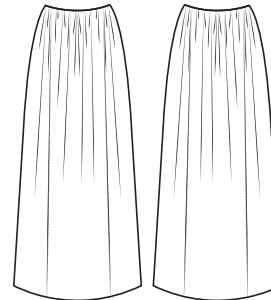
GOLDEN STRAP PLEATED DRESS



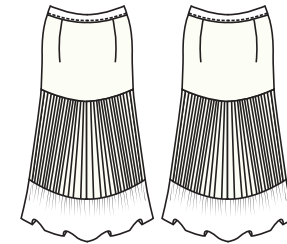
GATHERED LONG SKIRT IN IVORY



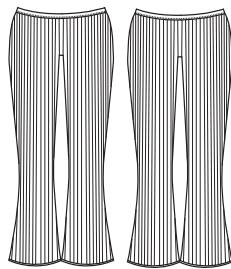
GATHERED MINI SKIRT



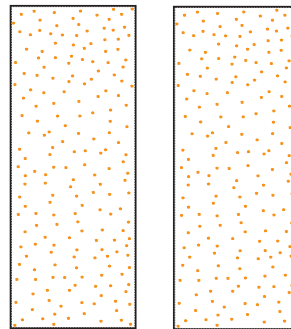
GATHERED LONG SKIRT IN WHITE



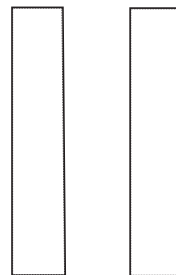
PLEATED MIDI SKIRT IN IVORY



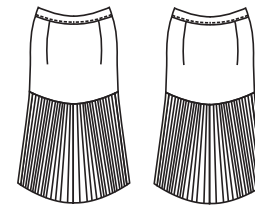
PLEATED MIDI CAPRIS



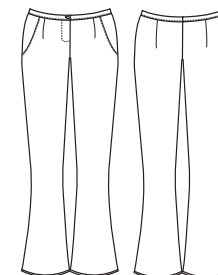
PETIT FLEUR VELVET SHAWL



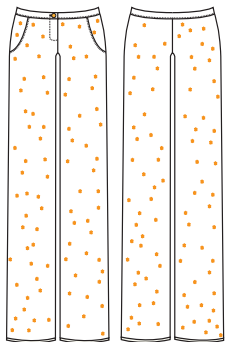
LONG SILK SCARF



PLEATED MIDI SKIRT IN WHITE



CLASSIC CAPRIS IN WOOL



PETIT FLEUR VELVET TROUSERS

Categories

Outerwear

Tops

Dresses

Trousers

Skirts

Accessories

Look 1



Look 2



Look 3



"She chose softness and stayed. And the world, finally, softened with her"
-Anisha Kohli