

KATARZYNA DŁUGOSZ

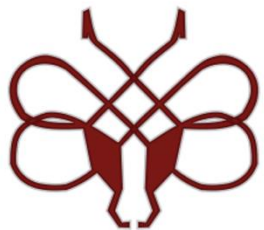
PORTFOLIO

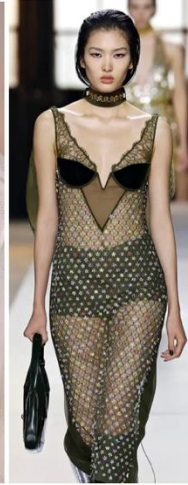
BA FASHION CONTOUR

FINAL YEAR

22044412

2025

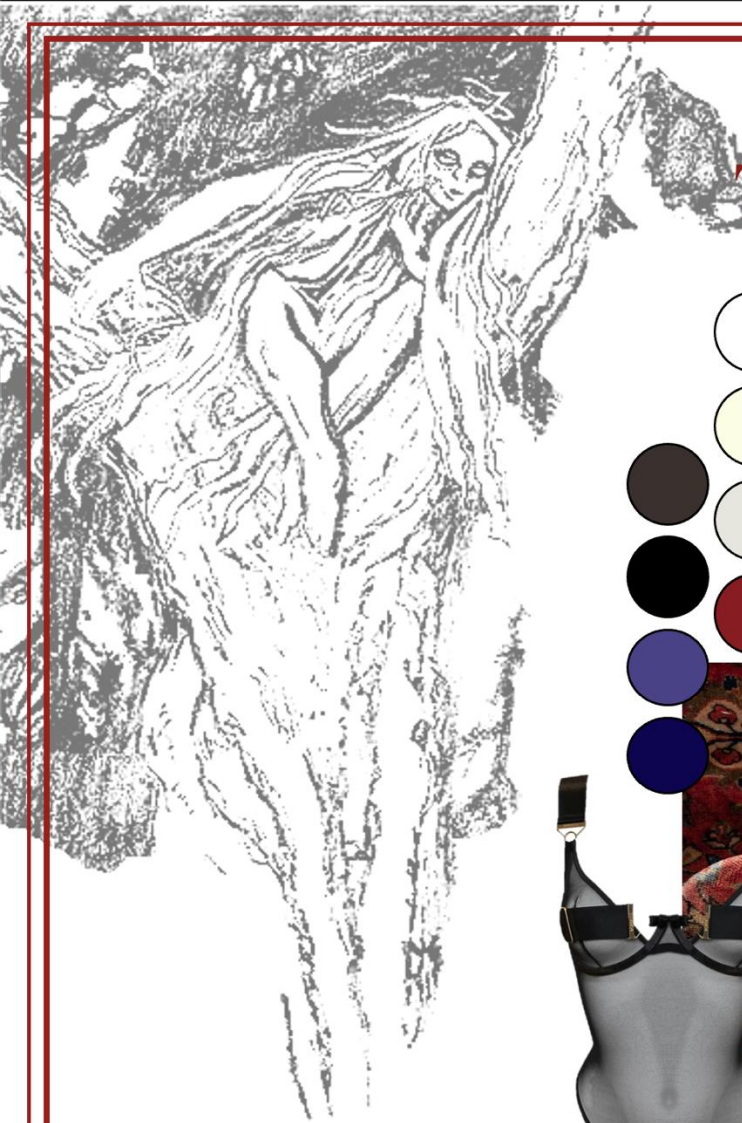




BRAND BOARD

THE GHOSTS FROM THE FIREPLACE

SS/26 CONCEPT



CONCEPT



CRAFT AND CULTURE



MYTHOLOGY

HISTORY OF GARMENTMAKING



WEARABLE TECHNOLOGY



INNOVATION

3D PRINT AND TEXTILE INNOVATION



MODERNISING SHAPE

THE MODERN SLAVIC WOMAN
SEXY AND
SCULPTURAL



LAVISHLY FEMININE



CONCEPT

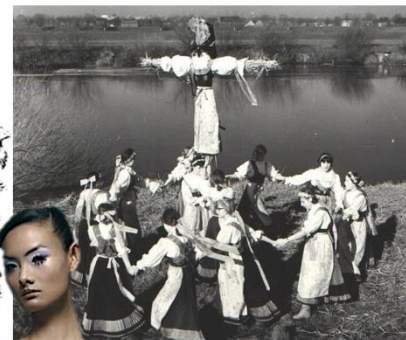
SIMPLE BUT
EXTRAVAGANT



FOLKLORE COSTUME



IDOLISATION OF CATHOLICISM



CULTURAL SYMBOLISM AND PAGAN SUPERSTITION



CONCEPT



○ silk satin

● laser-engraved velvet



● acryl sheets

○ LEDs



● velvet ribbon

● cotton chain stitch

● ribbed ribbon



● velvet

● Cotton thread embroidery

● Ivory cotton thread embroidery



○ organza

FABRIC AND DETAIL



- tulle
- silk satin
- ruched elastic



cotton embroidery



velvet



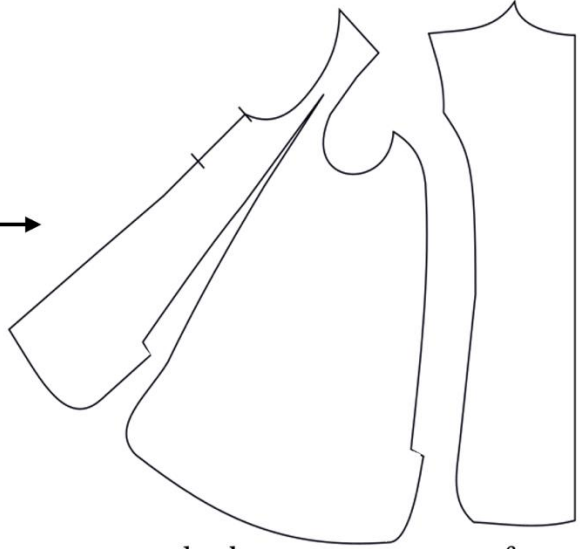
FABRIC AND DETAIL

shape



front

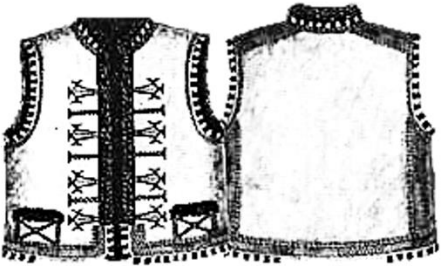
back



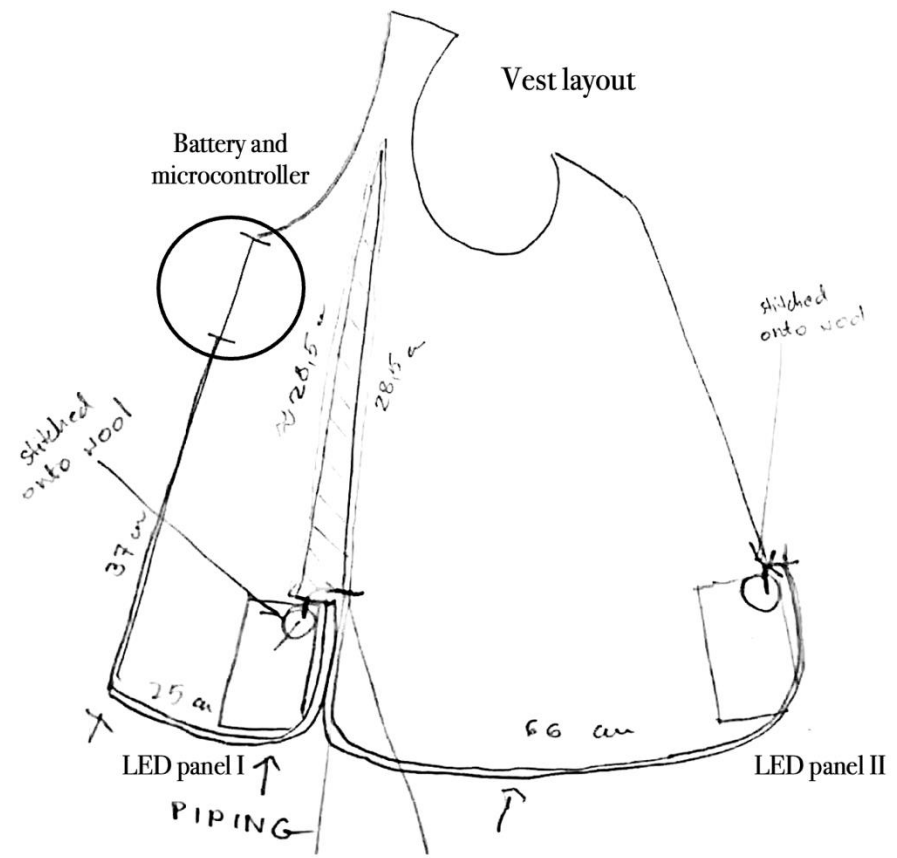
back

front

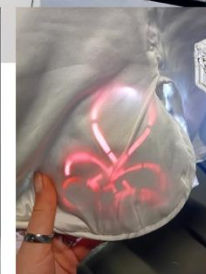
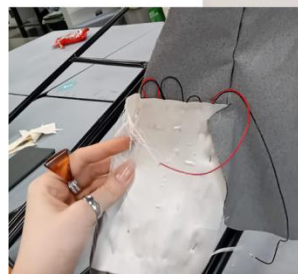
Turning the traditional shape of a corset vest, worn in almost all traditional slavic regions back to front



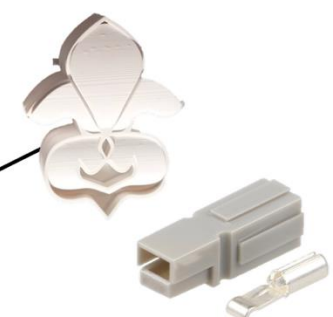
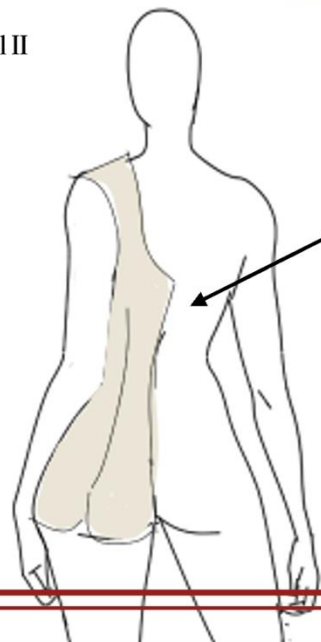
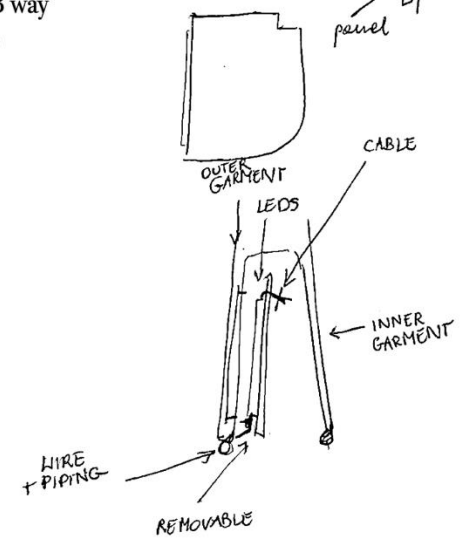
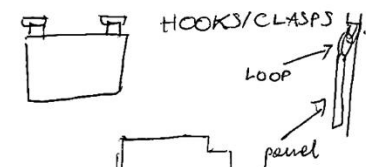
DESIGN



Determining the design of the panels so they can be fully removable for safety

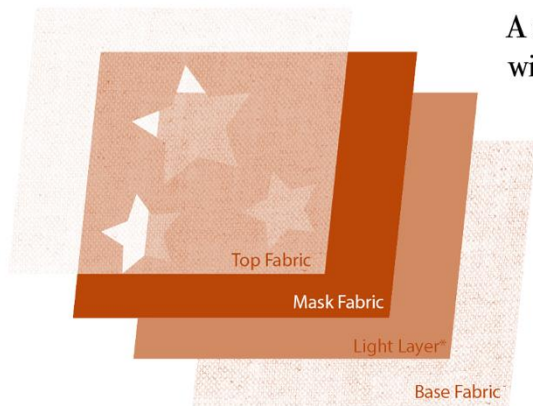


The LEDs connected to the circuit via 3 way connectors

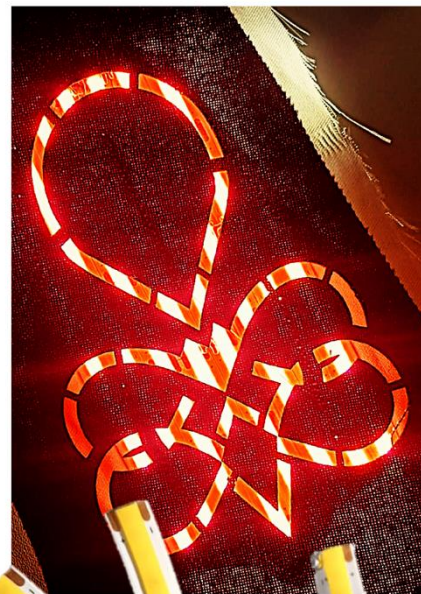


Wire incorporated into the trim and connected to the enclosure via clip-on wago connectors

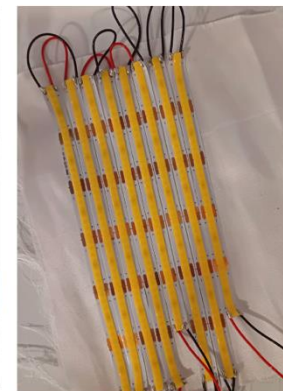
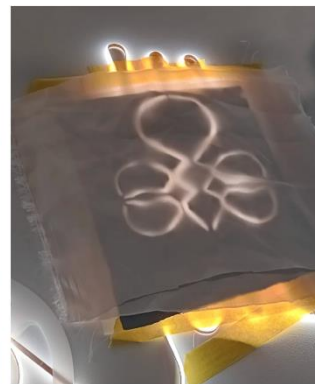
innovation



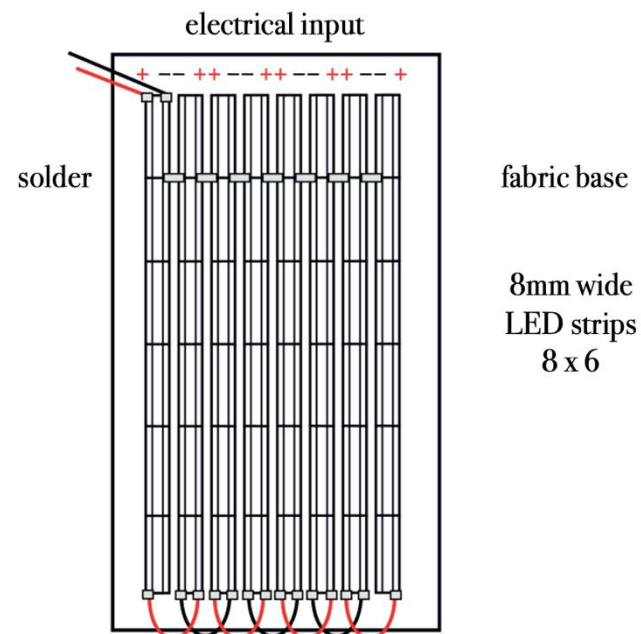
A sample of lasercut light-blocking fabric with LEDs and acryl light-blocking sheet



shape suitable for lasercutting



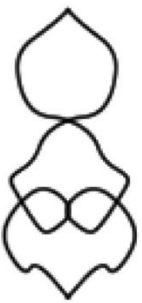
First sample of the panels



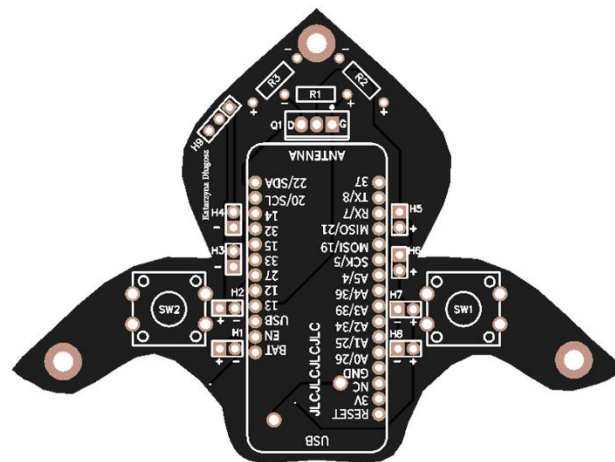
This creation uses less wiring than initial models because of the efficient wiring pattern

innovation

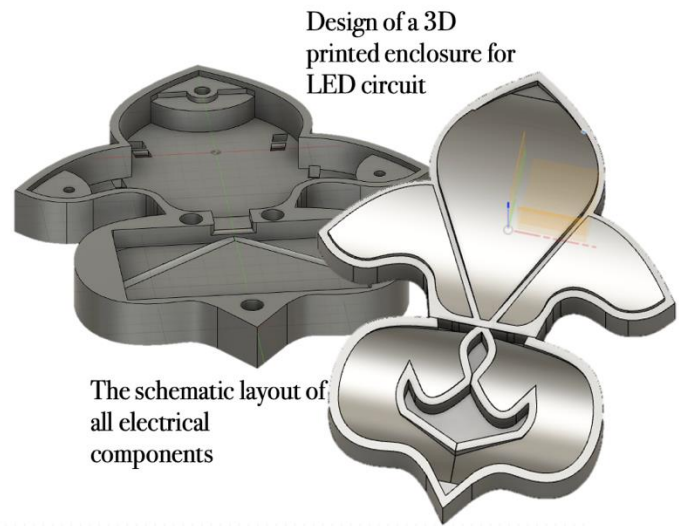
PROCESS



Translating Parzenica, a traditional trouser embroidery symbol

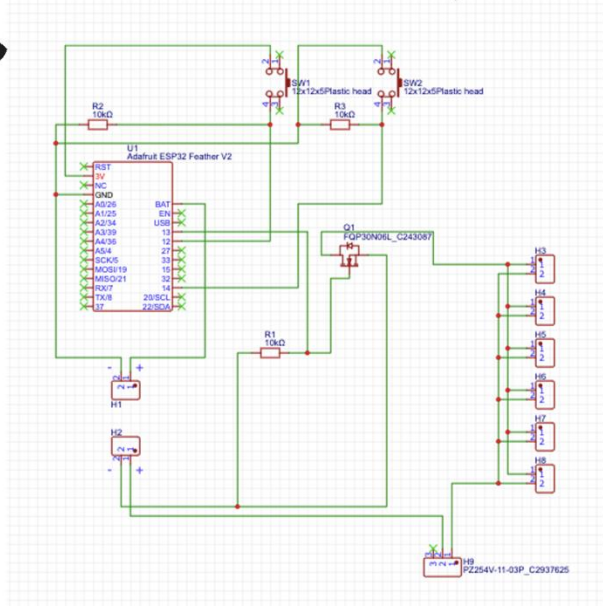


Designing a Printed Circuit Board in the shape of the enclosure



Design of a 3D printed enclosure for LED circuit

The schematic layout of all electrical components

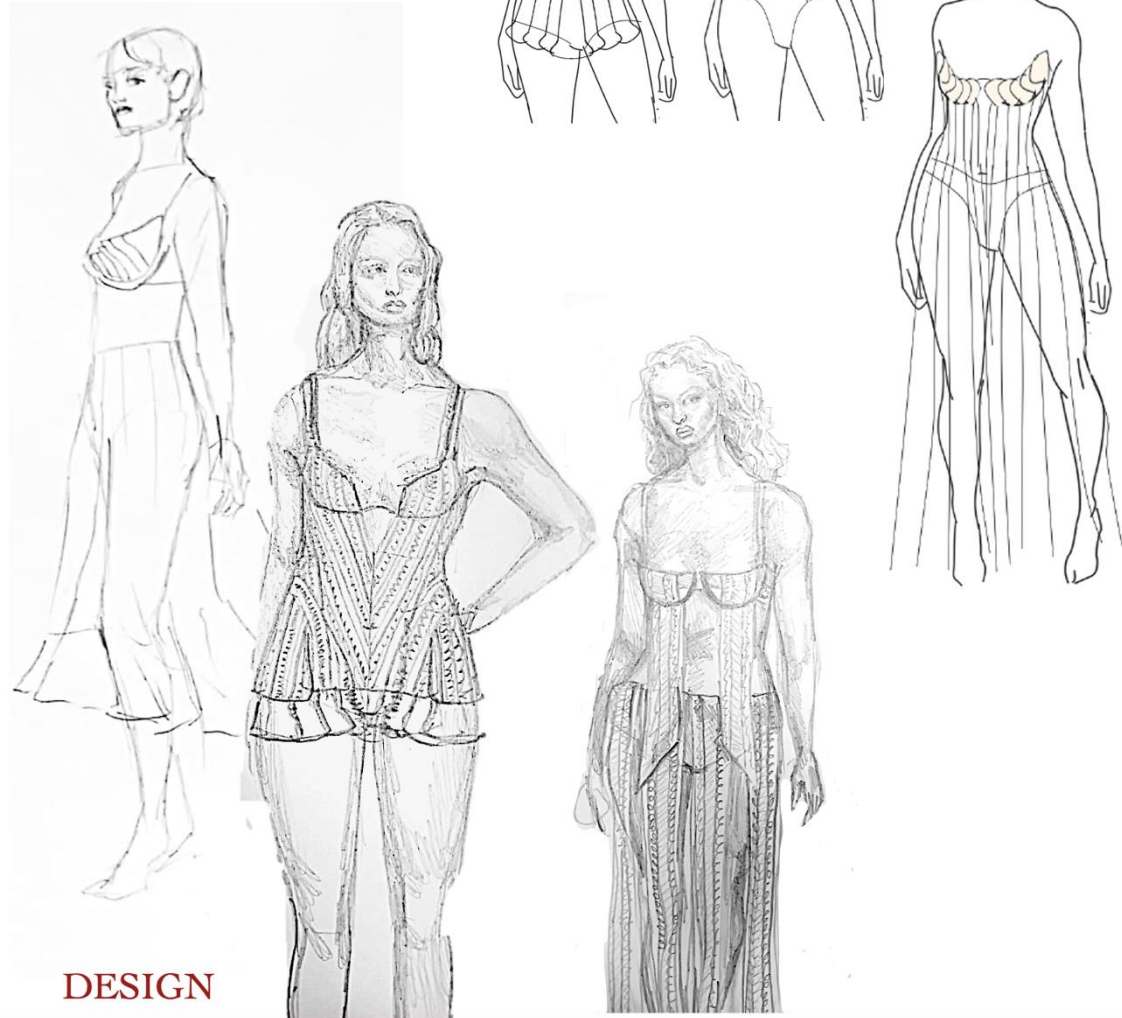


innovation

DESIGN AND PROCESS



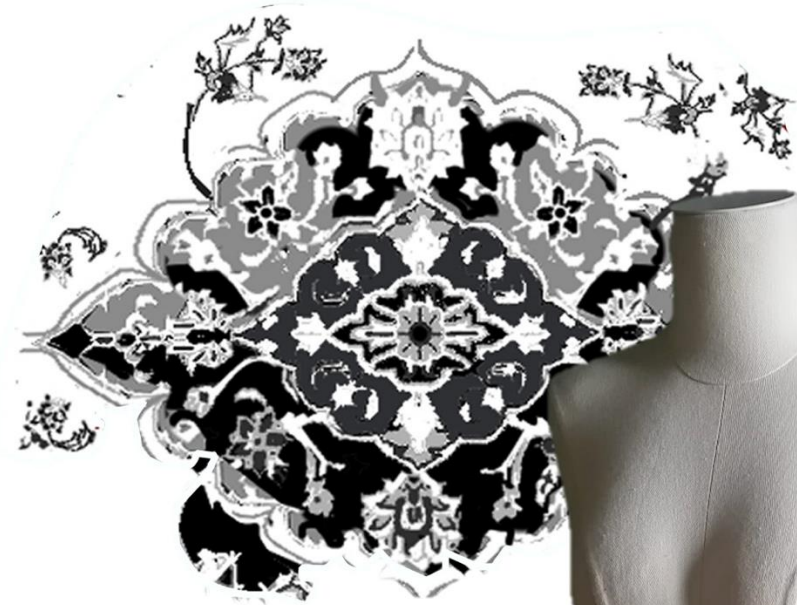
Translating the corset-vest pleats into new placements



DESIGN



Digitalised design and experimentation with its placement



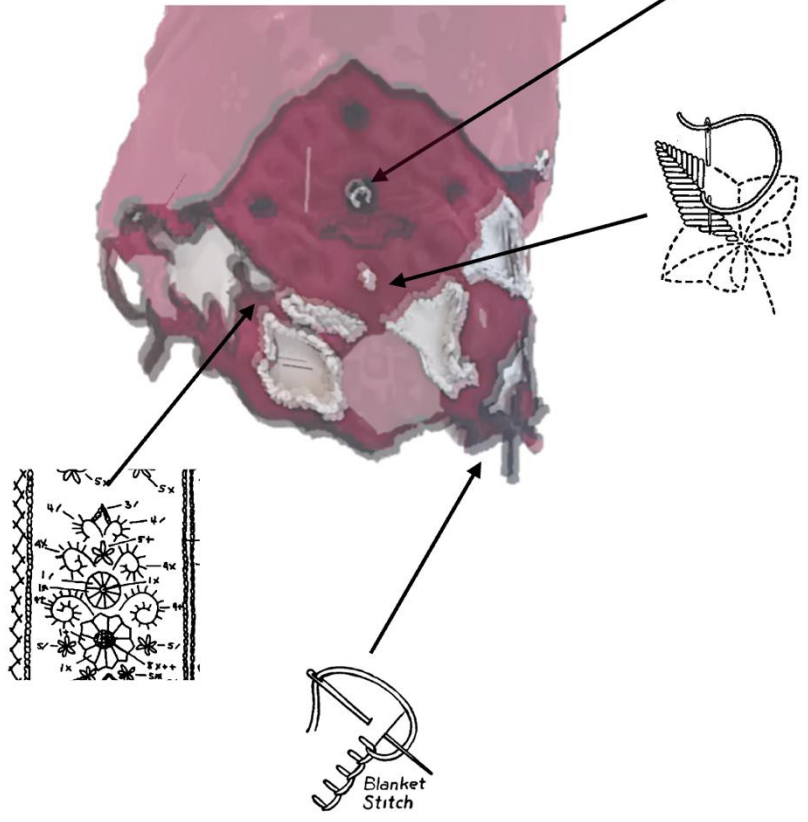
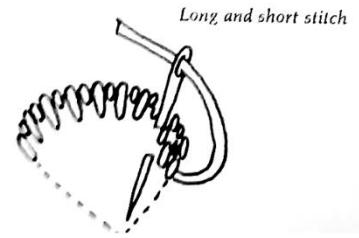
Adjusting the digital pattern design to the shape of the hip

lasercutting

The persian carpets were overtaken and adopted as a part of slavic culture after the Ottoman wars – one of the most astonishing military triumphs of the eastern european block. The winning armies displayed them in their countries as a triumph of 'Christian block against the pagan flood' – the symbol of their victory over Muslim Turks in the 1700s. In reality this carpets symbolise the hidden aggression and islamaphobia hidden under the overbearing sentiment of being the 'Last true Christian nation' the Eastern Europeans have expressed in their culture, literature and politics for the last 300 years.

DESIGN

The traditional slavic embroidery techniques on top of lasercut base to achieve the layered look of a decaying carpet



embroidery

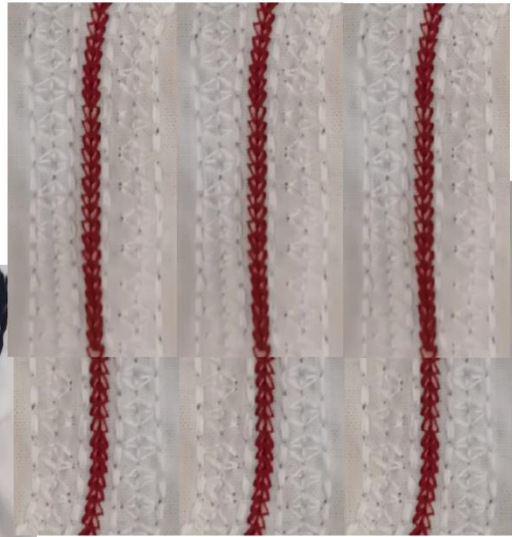
PROCESS



● Machine chainstitch and layered embroidery



● Sampling on organza:
beaded double chainstitch
● velvet ribbon
● black 8-thread continuous chain



● Sampling on organza:
grosgrain ribbon
● velvet ribbon
● black 8-thread continuous chain



embroidery

Creating samples of embroidery using traditional trims from an archival folk skirt

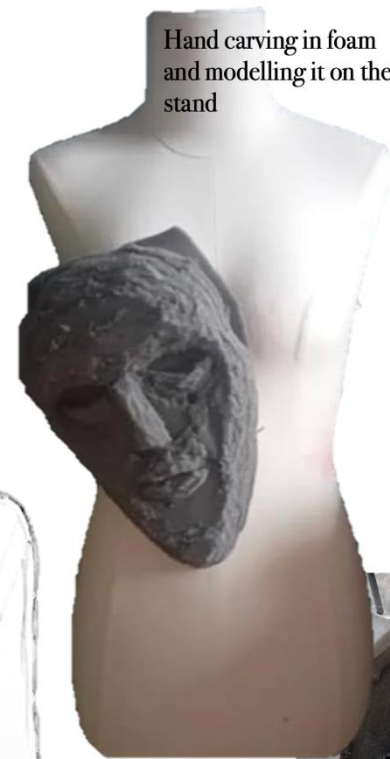
DESIGN

The totems of gods could be found in forests, in which the Slavs believed the gods and spirits lived. They had no need for temples but the humility and respect they expressed towards nature thanks to their religion was due to the belief they will be offered protection in return.

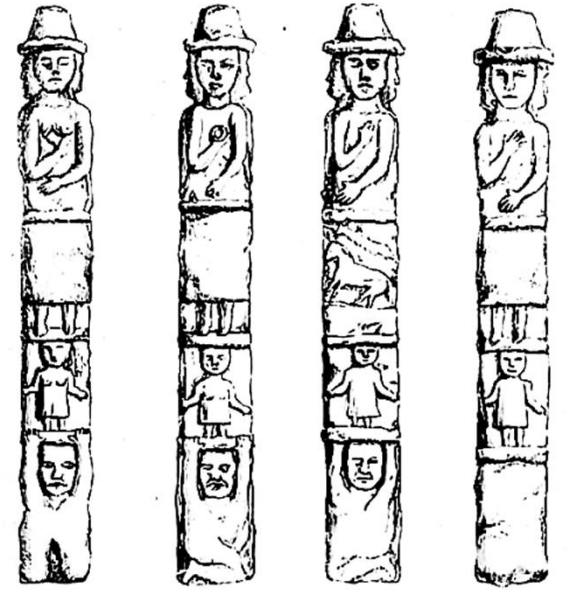
moulding



DESIGN



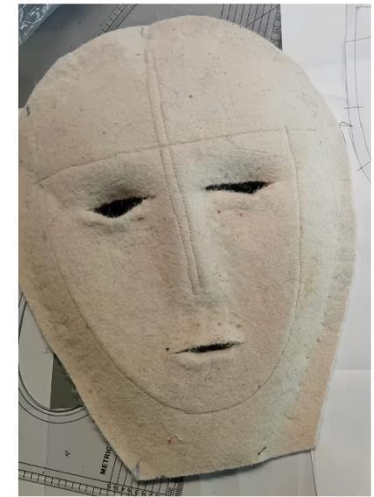
Hand carving in foam and modelling it on the stand



SWIATOWID.

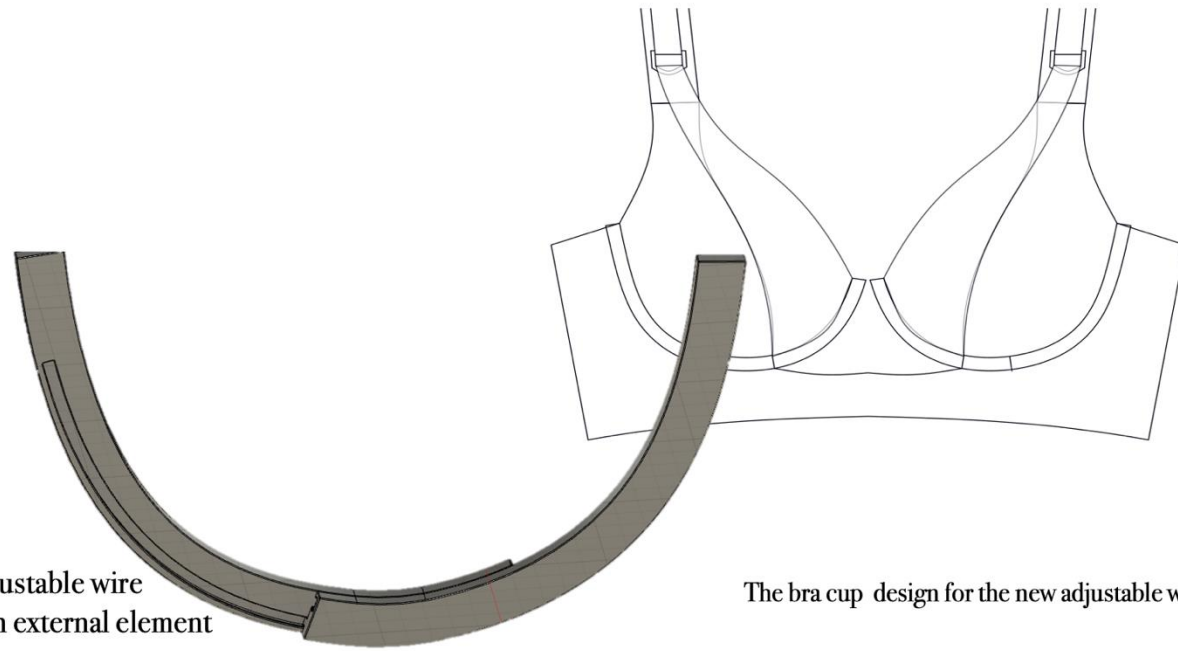


Vacuum - formed base



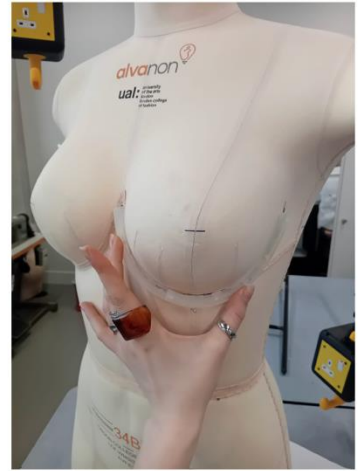
Felt steam- formed base

adjustability

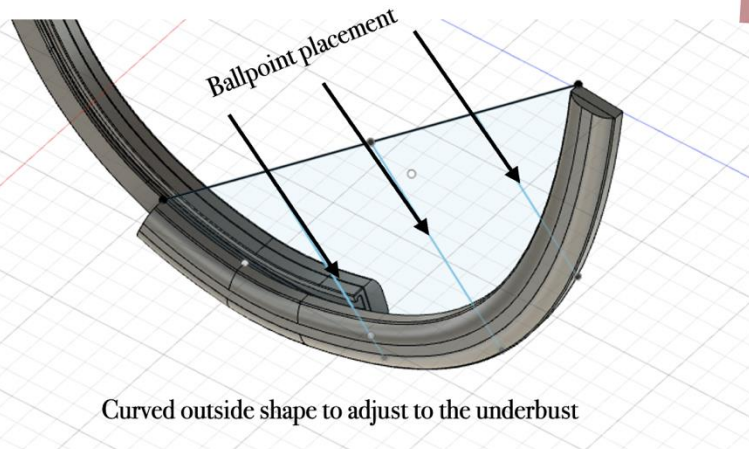


Advancing the adjustable wire technology into an external element

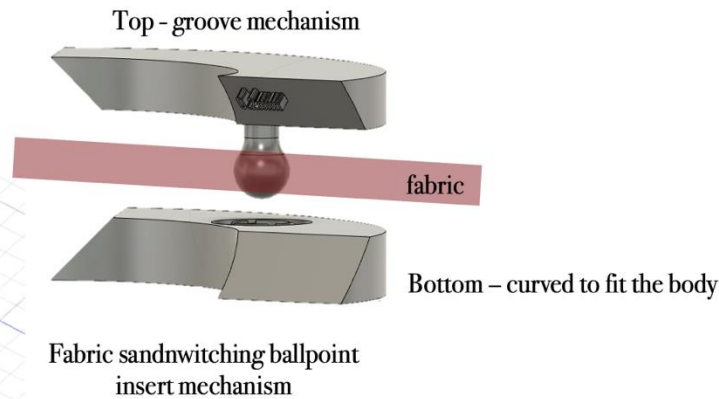
The bra cup design for the new adjustable wire



The mesh part is fully mobile because of being attached through a crescent-shaped ring



Curved outside shape to adjust to the underbust



Fabric sandwiching ballpoint insert mechanism

DESIGN

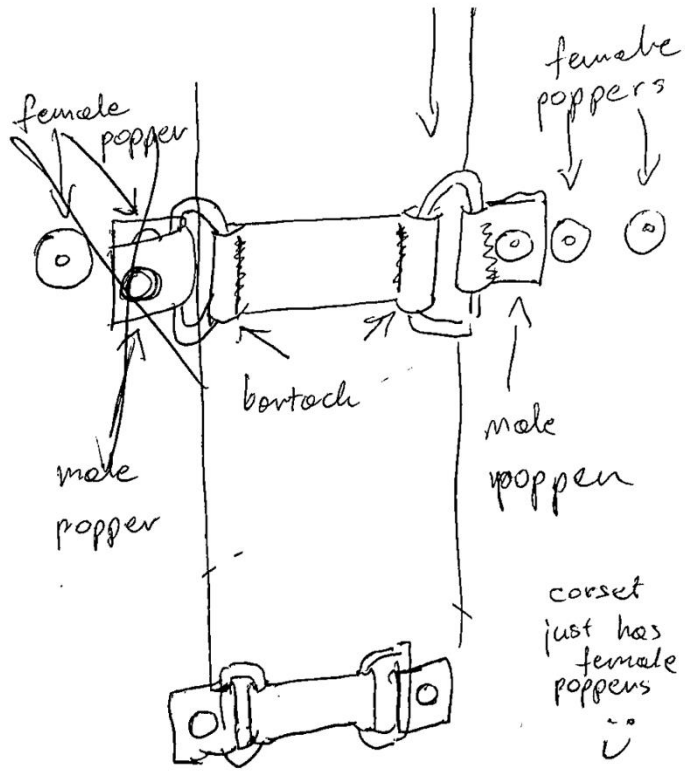


The external part of the wire is then encased into velvet to protect the skin

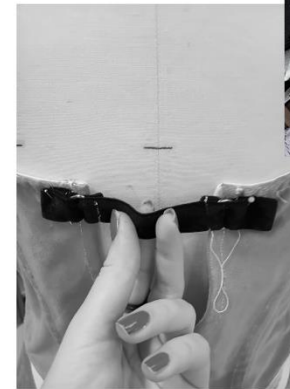
adjustability



Creating comfortable size adjustment mechanism – combining easily-removable magnetic poppers with elastic straps



First sample included non removable loop mechanism



The second mechanism design includes 4 rows of female poppers, regulated by fully detachable strap with buttons on each side.



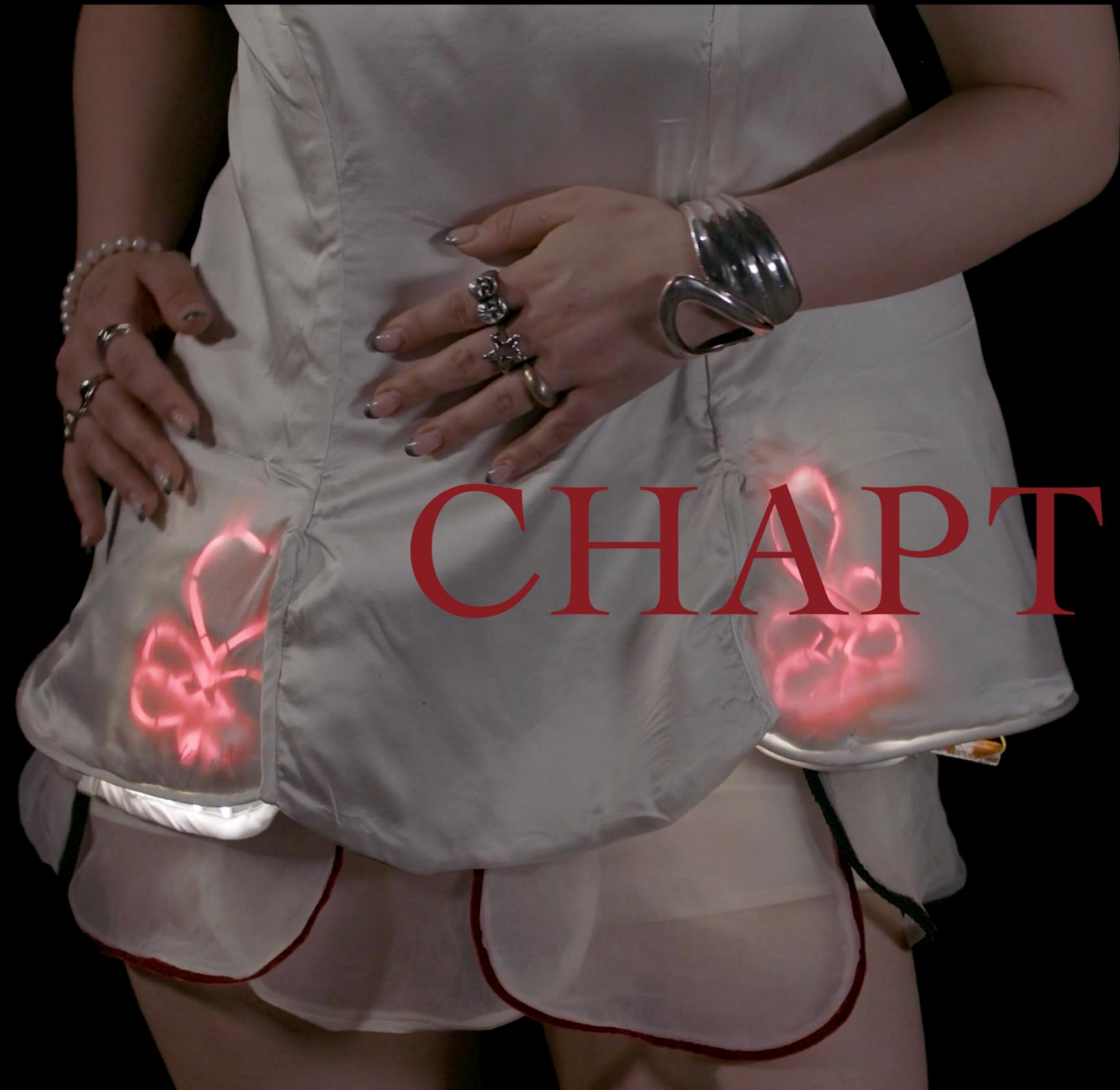
Something that can replace lacing but keep the same principle of performance

DESIGN



THE GHOSTS FROM THE
FIREPLACE

CHAPTER I



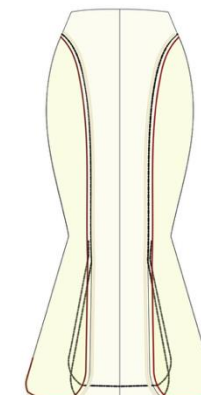
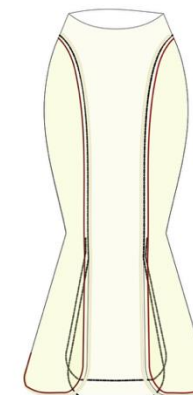
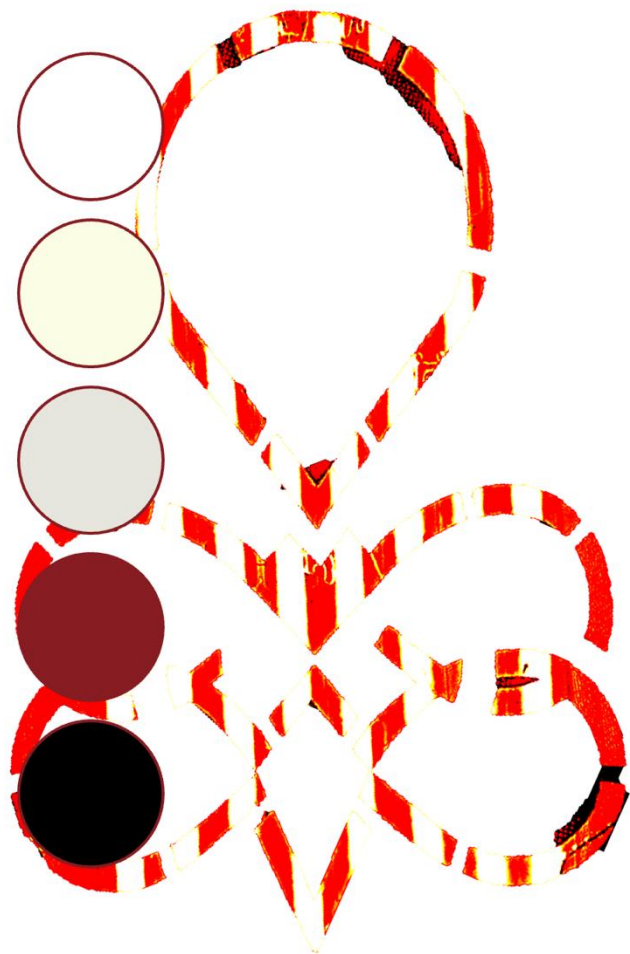


THE CAPSULE



DUGOSZ

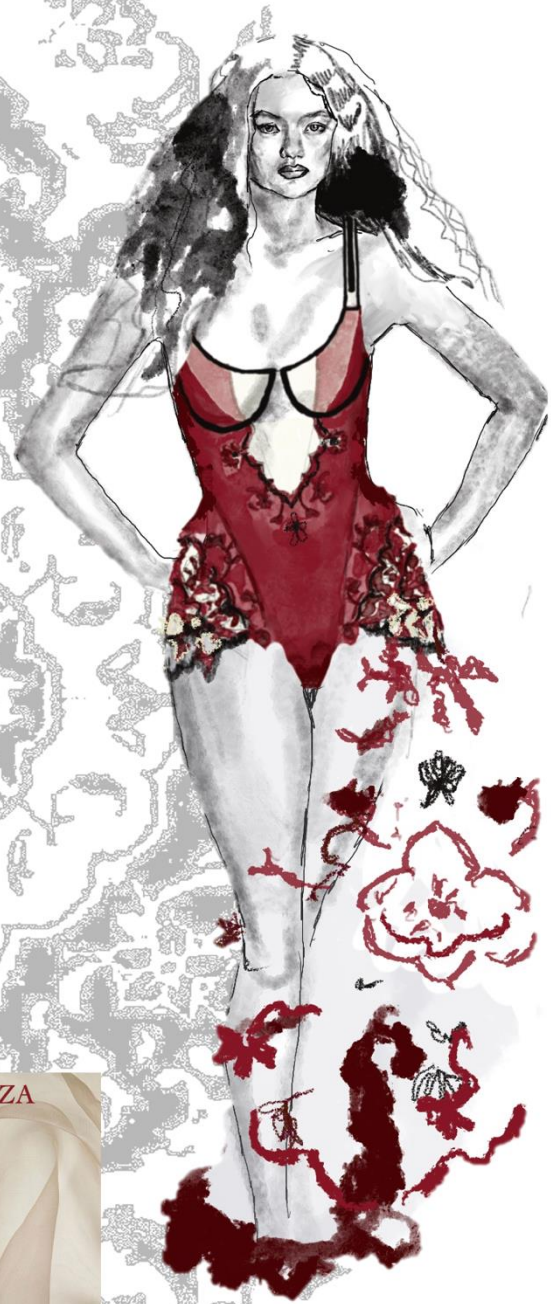
CHAPTER I



THE CAPSULE



CHAPTER I



THE CARPET

ADJUSTABLE CUP, ENGRAVED BODYSUIT

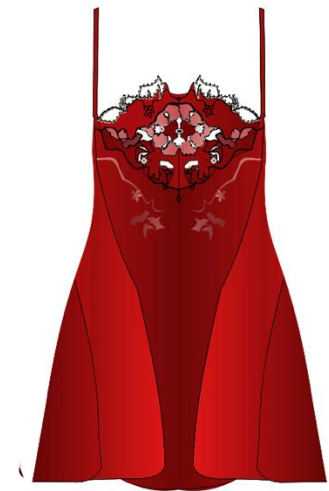


THE KABAT

ADJUSTABLE ENGRAVED SLIP

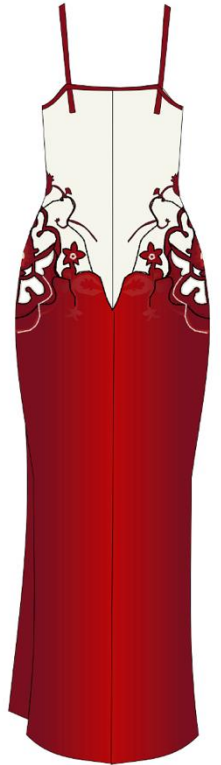
SILK SATIN
LINING

LASER-CUT
VELVET



THE KIKIMORA

*MAXI ENGRAVED SEMI-SHEER SLIP AND A
PADDED BRALETTE*



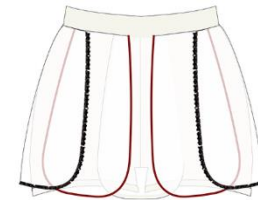
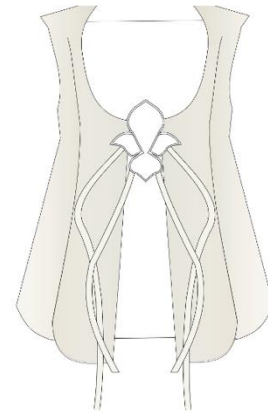
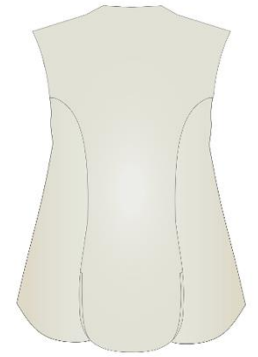
VELVET RIBBON



WOVEN COTTON
GROSGRAIN
RIBBON



*THE LIGHT
PATTERN*



THE PARZENICA

*LED EMBEDDED VEST AND
EMBROIDERED SKORT*

SILK SATIN

ORGANZA

BLACK-OUT
POLYESTER
LINING

LYCRA
LINING



VELVET RIBBON



WOVEN COTTON

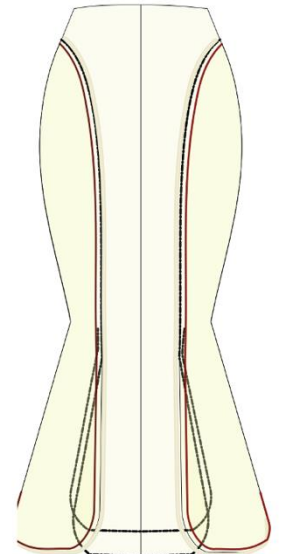
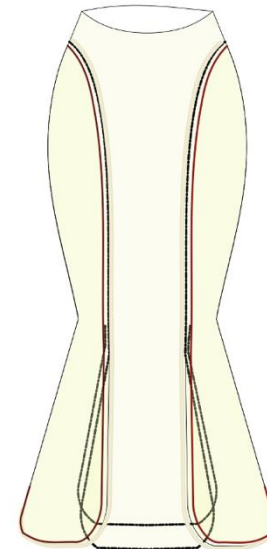
GROSGRAIN
RIBBON

THE OBEREK SET

*EMBROIDERED SILK AND ORGANZA
CORSELETTE, BRIEF AND PANELLED
MIDI SKIRT*

SILK SATIN

ORGANZA





THE GHOSTS FROM THE
FIREPLACE

CHAPTER II

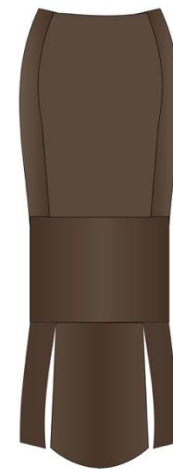
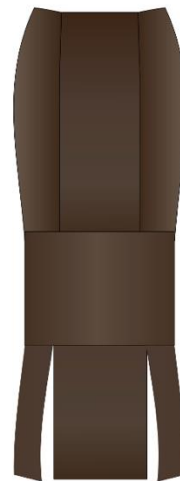
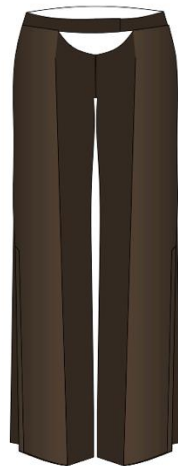
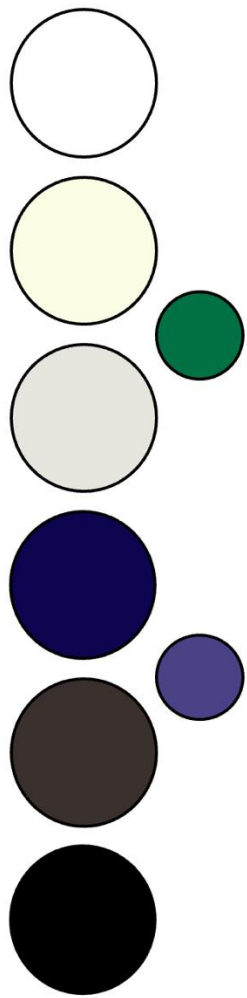




THE CAPSULE



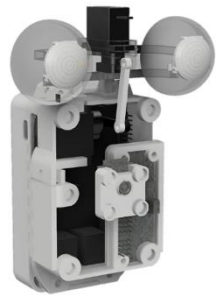
CHAPTER II



DUGOSZ

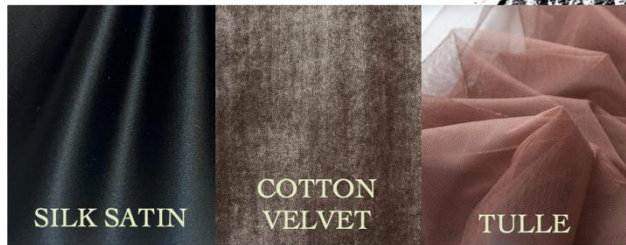
THE CAPSULE

CHAPTER II



THE SVIATOVID

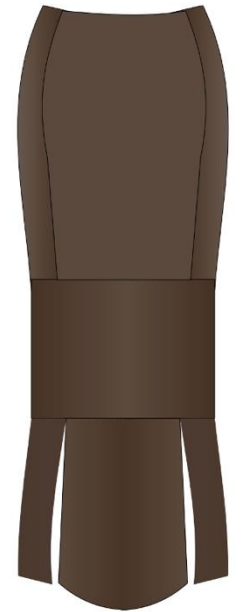
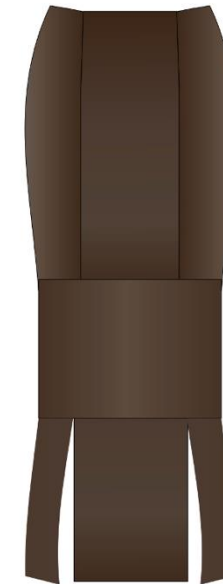
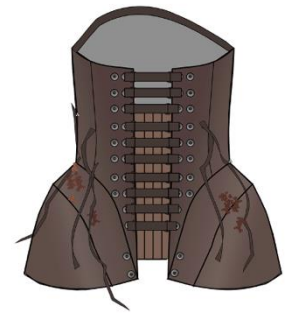
*APPLIQUE EYE-TRACKING CORSET
BELT, SKIRT AND A THONG*



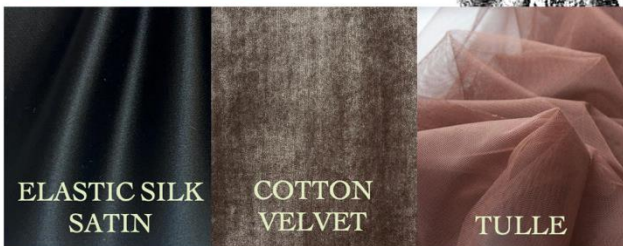
SILK SATIN

COTTON
VELVET

TULLE



THE LESHY SET
*CUTOUT SATIN BODYSUIT AND
VELVET TROUSERS*



WOVEN
COTTON GROSGRAIN RIBBON
VELVET RIBBON



THE RUSALKA SET

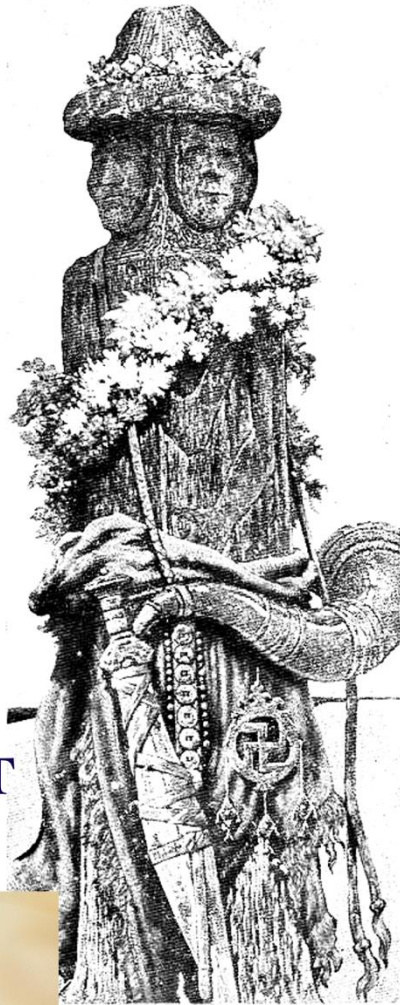
*APPLIQUE STRIPE ADJUSTABLE BRA
AND STRIPE ORGANZA SKIRT*

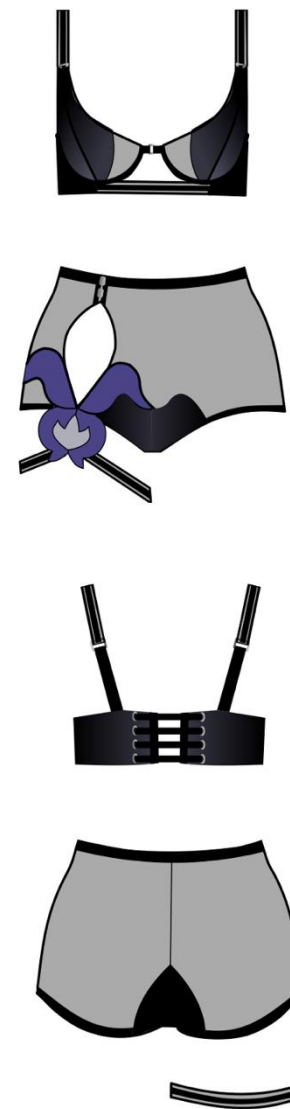
VELVET (WIRE)

SILK SATIN

ORGANZA

MESH





WYCINANKI I

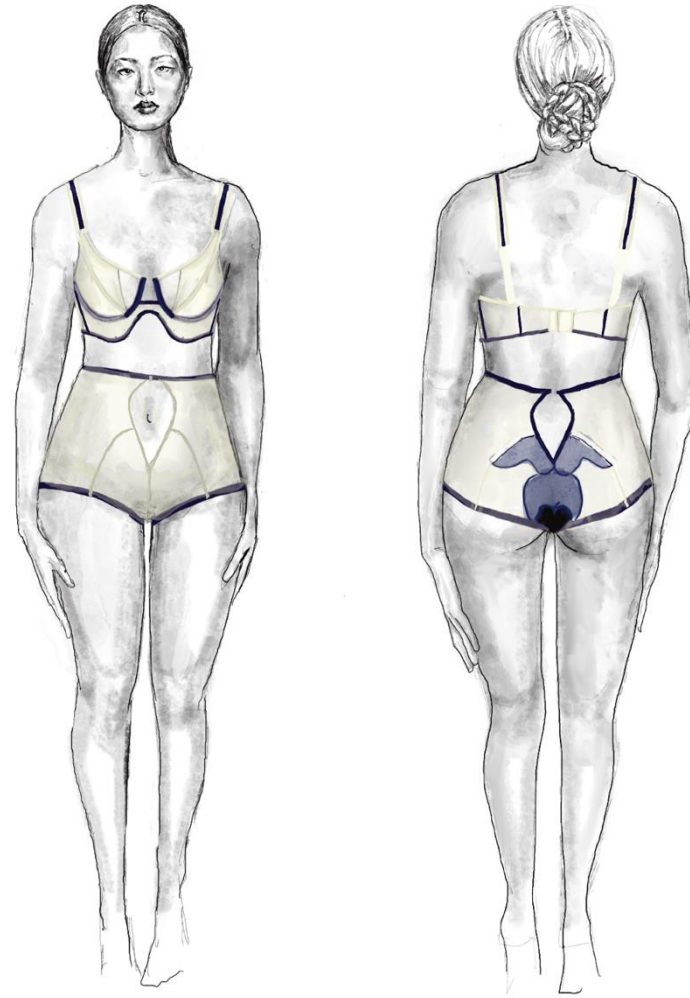
ADJUSTABLE CUP BRA AND HIGH-RISE
CUTOUT KNICKERS

VELVET (WIRE +
PANELS)

SILK SATIN

ORGANZA

MESH



WYCINANKI II

*ADJUSTABLE CUP BRA AND HIGH-RISE
CUTOUT KNICKERS*



VELVET
(WIRE +
PANELS)



SILK SATIN

ORGANZA

MESH



THE ZAPAL SET

*CUTOUT LONGLINE ADJUSTABLE BRA
AND CUTOUT TROUSERS*

VELVET (WIRE + PANELS)



SILK SATIN

ORGANZA

SILK
CHIFFON

MESH

The box



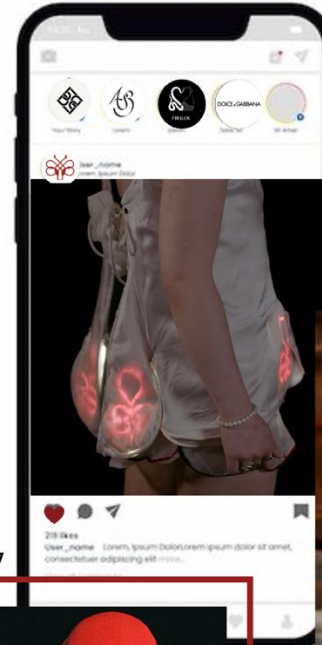
The shopping bag



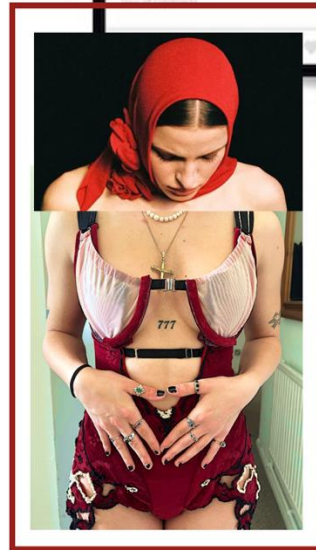
The tags – featuring the artists



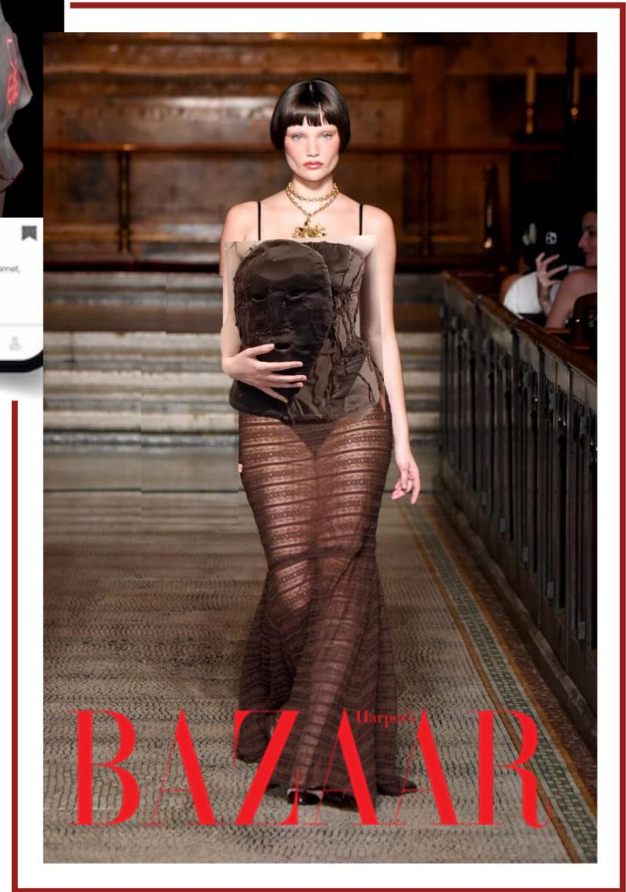
Coverage featuring innovation



Humorous marketing



Magazine exposure



PACKAGING



BRANDING