



Time Lapses

BA (HONS) FASHION PATTERN CUTTING
FINAL MAJOR PROJECT

Zixuan Yang
21013197

CONTENTS

Concept Abstract :	01
Research :	02 – 09
Design Development :	10 – 27
Consumer Board :	28
Fabric Board :	29
Line Up :	30 – 31
Range Plan :	32 – 35
Presentation Sheets :	36 – 41
Outfit Display :	42 – 47



Concept Abstract

In the process of growing up, I often feel that time passes so quickly. Time flies when I'm browsing social media, short video platforms, online shopping and in a fast-paced work and study environment. People perceive time differently in different situations. For example, when you are busy at work, time may pass very quickly, but when you are waiting, time feels particularly slow. For everyone, time is closely tied to personal identity. Each person's life journey is unique, and time embodies the process of personal growth, experience, and transformation. The individual shapes his or her identity over the course of time and enriches it through memory and experience. The passage of time is irreversible, but each passage is a unique moment that cannot be replicated.

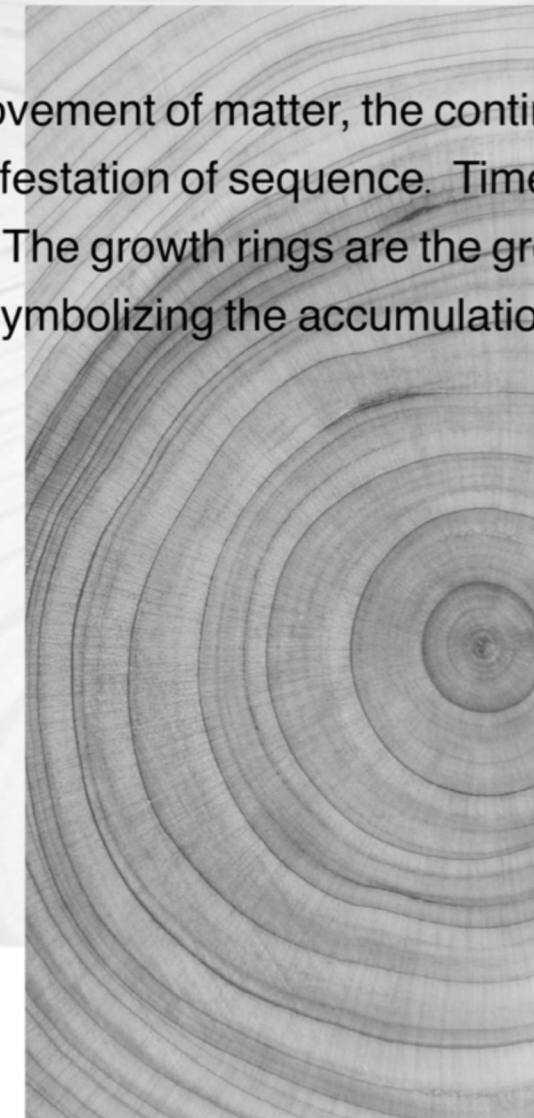
The passage of time is closely related to memory and life, so there are many things in life that can represent the passage of time. For example, annual rings, candles, hourglasses and clocks. I wanted to use these elements and the theme of the passage of time to combine with the fashion design.

Time lapses Research — Growth Ring



Annual rings are concentric rings that form as a tree grows and are usually visible in cross sections of the trunk. Each ring represents a year's growth cycle, thus reflecting the passage of time.

Time lapses Research — Growth Ring



Time is the eternal movement of matter, the continuity of change, and the manifestation of sequence. Time leaves traces on everything. The growth rings are the growth tracks left by time on trees, symbolizing the accumulation of time.

Time lapses Research — Growth Ring



Tree rings symbolize the passage of time and can convey themes in a design. In terms of the use of materials, the sense of layers of tree rings gives me inspiration for different fabrics and cuts, creating clothes with a rich sense of layers.

Time lapses Research — Candle Melting



The melting of a candle is often used as a symbol of the passage of time, because the wax diminishes as the candle burns, representing the continuous passage of time. Whenever a candle burns for a while, the melted wax and burning flame remind people to cherish the present moment. The flame of the candle also symbolizes the fragility and transience of life, giving people a feeling of thinking about life, time and fleeting.

Time lapses Research — Candle Melting

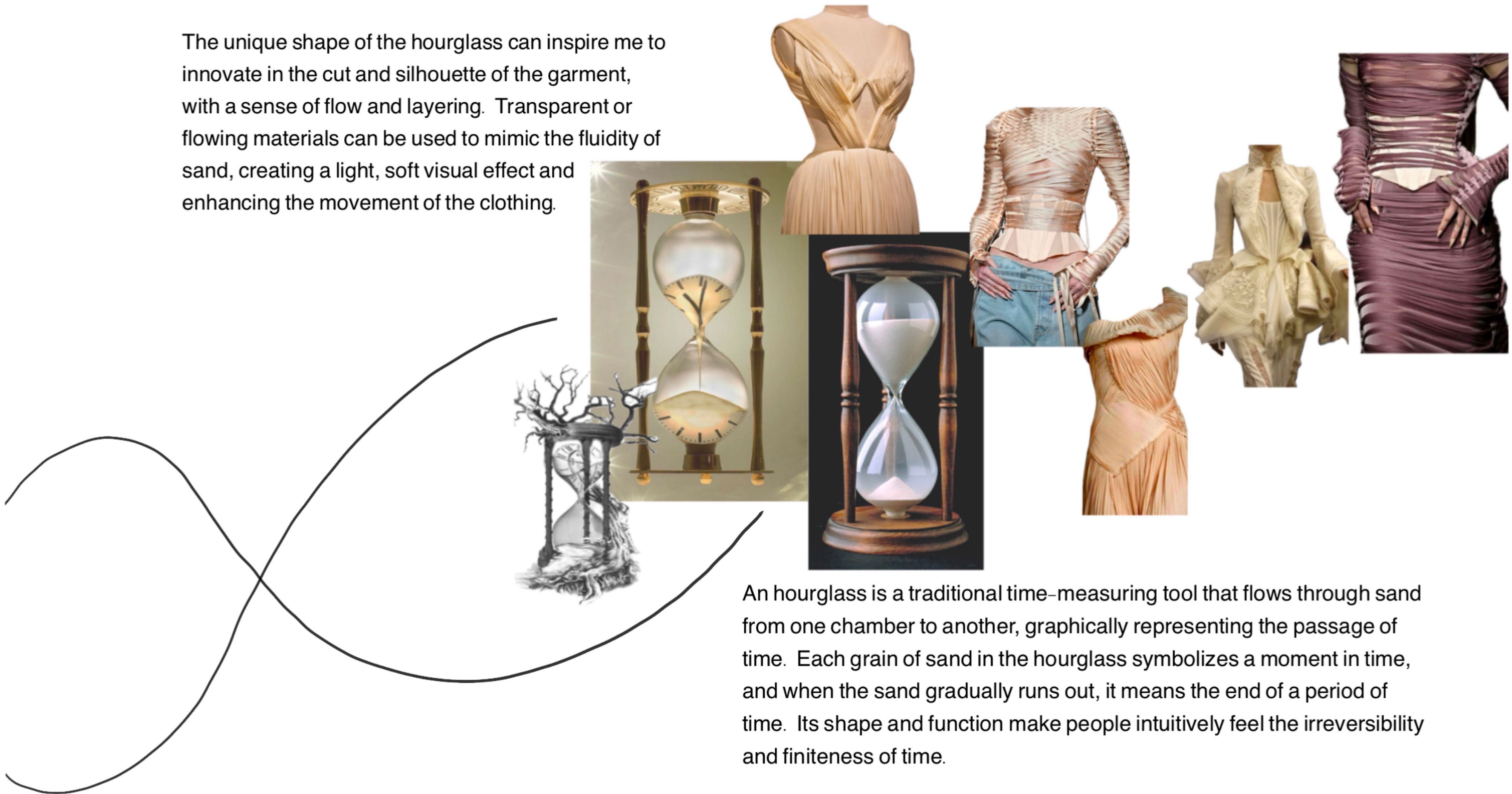
The effect of melting candles can bring inspiration to the design, and the flowing form of melting can be reflected in the clothing.



The melting shapes and lines of the candle make me feel like pleat, and I can use pleat elements in my design.

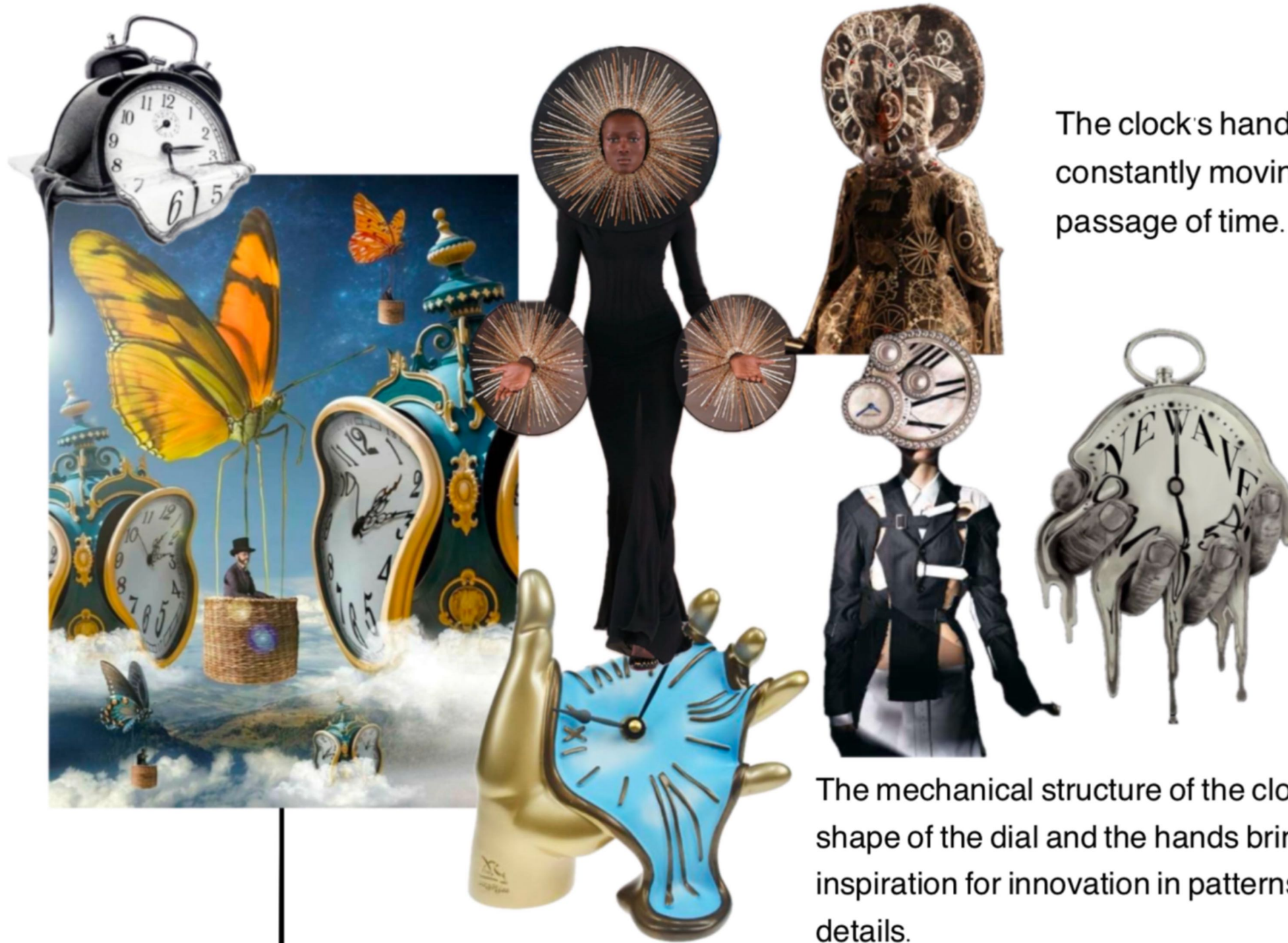
Time lapses Research — Sand Clock

The unique shape of the hourglass can inspire me to innovate in the cut and silhouette of the garment, with a sense of flow and layering. Transparent or flowing materials can be used to mimic the fluidity of sand, creating a light, soft visual effect and enhancing the movement of the clothing.



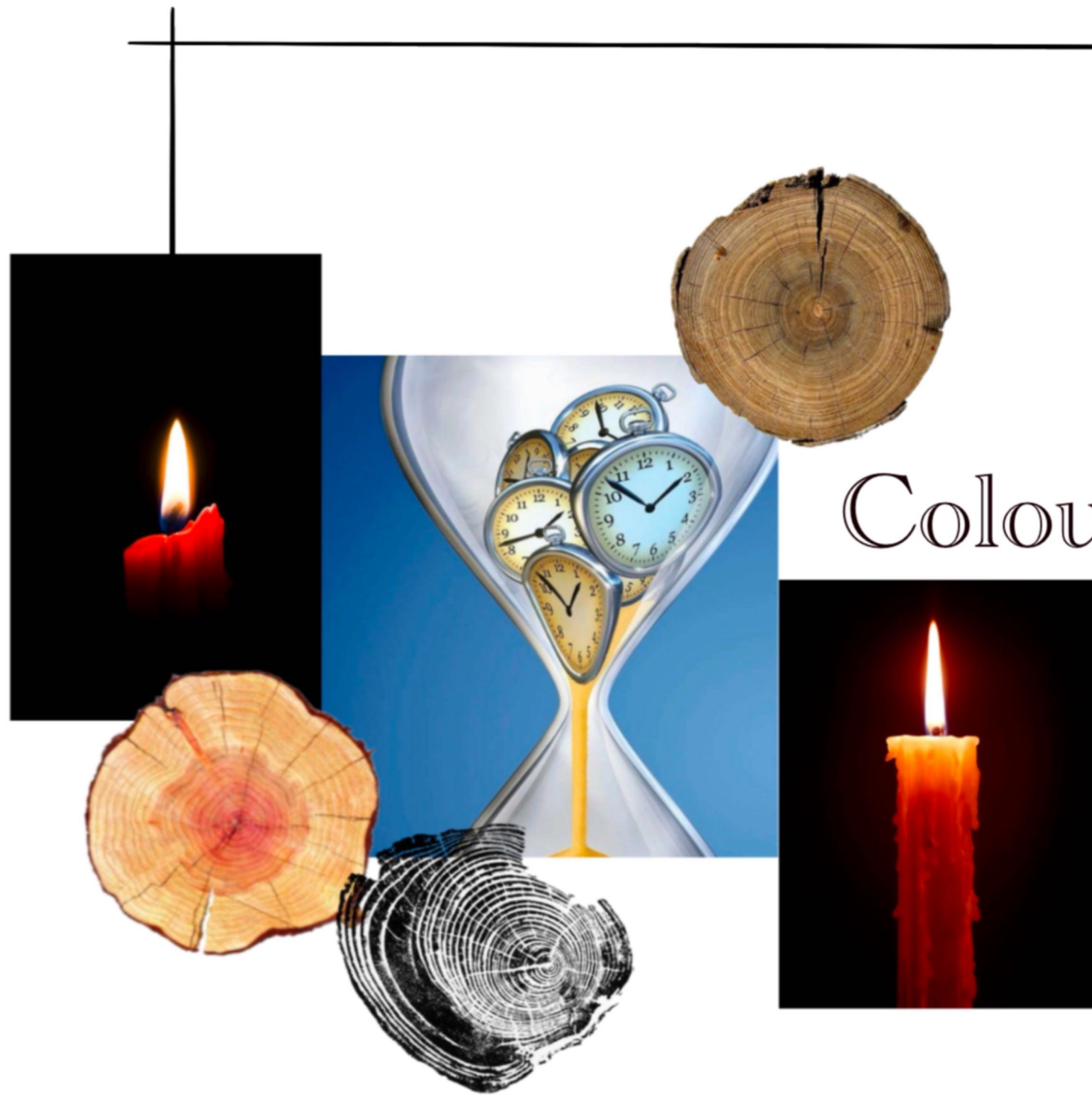
An hourglass is a traditional time-measuring tool that flows through sand from one chamber to another, graphically representing the passage of time. Each grain of sand in the hourglass symbolizes a moment in time, and when the sand gradually runs out, it means the end of a period of time. Its shape and function make people intuitively feel the irreversibility and finiteness of time.

Time lapses Research — Timepiece

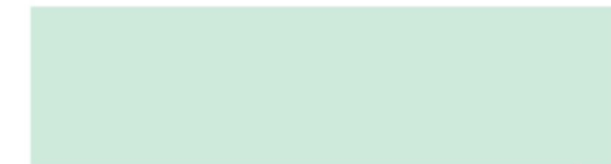


The clock's hands or digital display is constantly moving, visually reflecting the passage of time.

The mechanical structure of the clock, the shape of the dial and the hands bring inspiration for innovation in patterns and details.



Colour Board



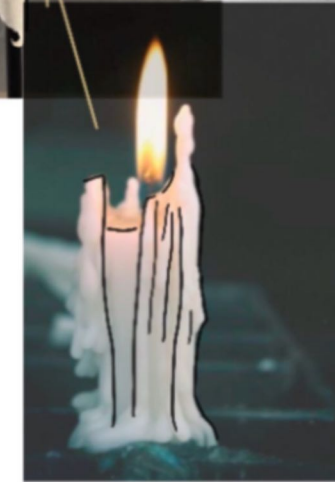
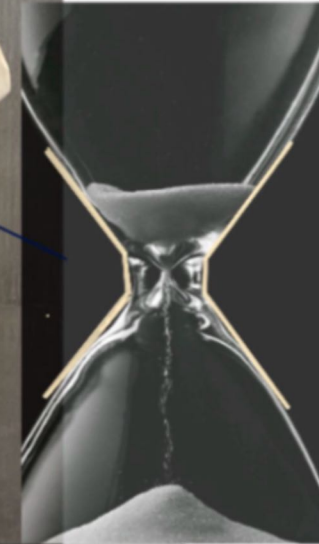
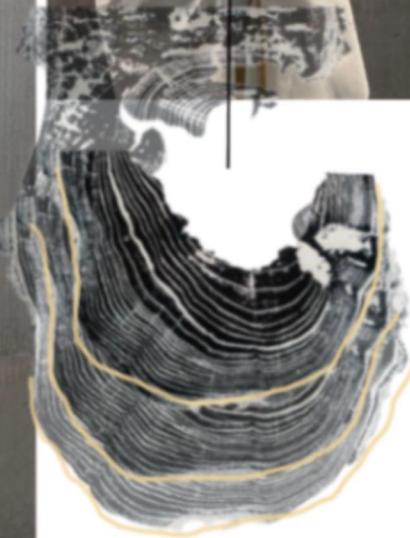
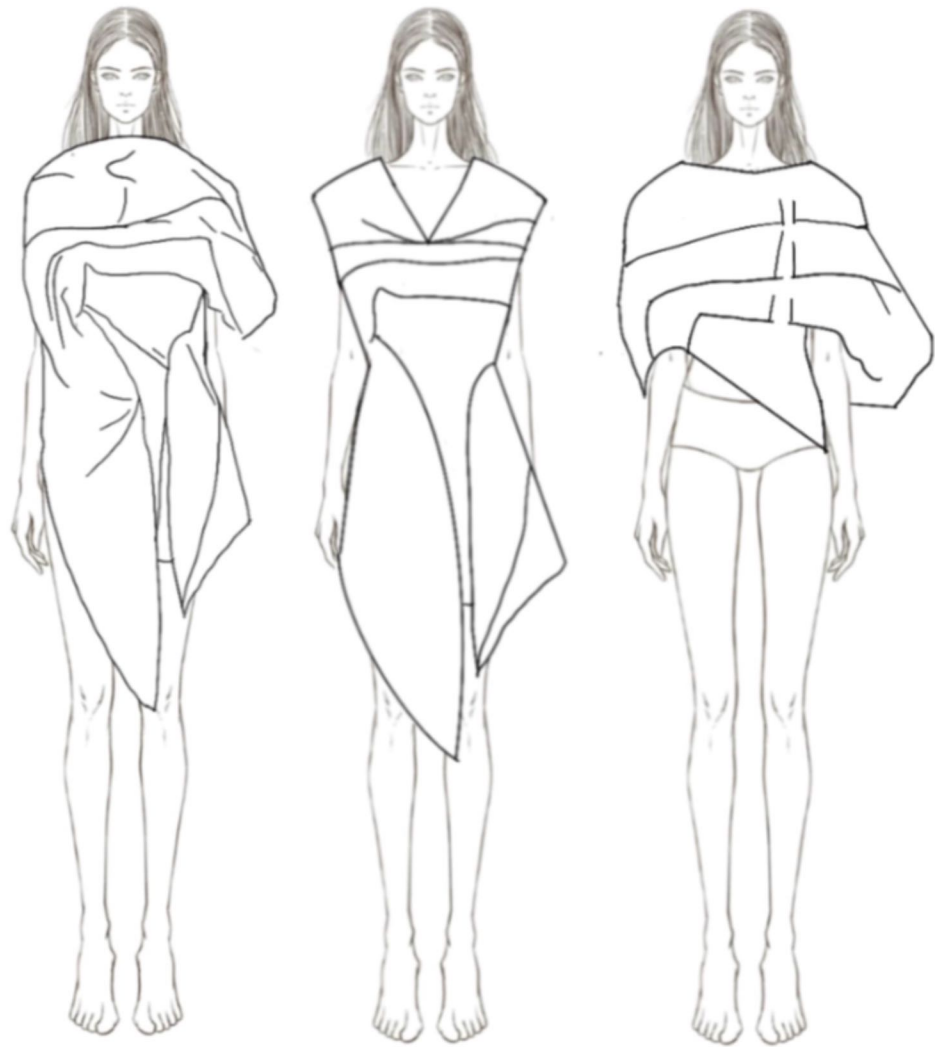
Design Development — Design Collage



Design Development — Design Collage

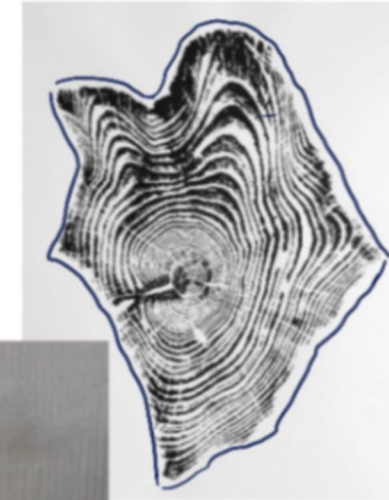
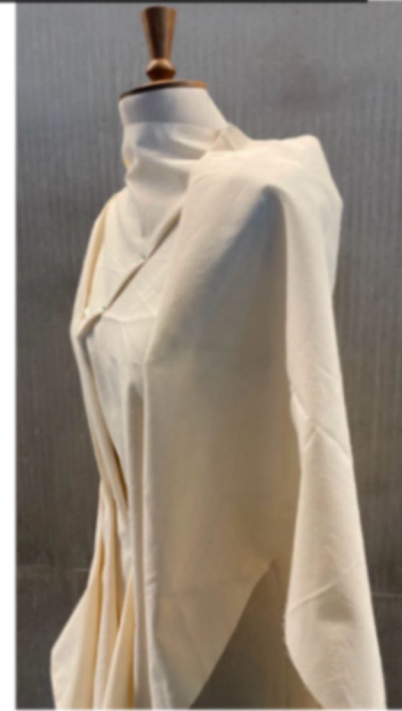
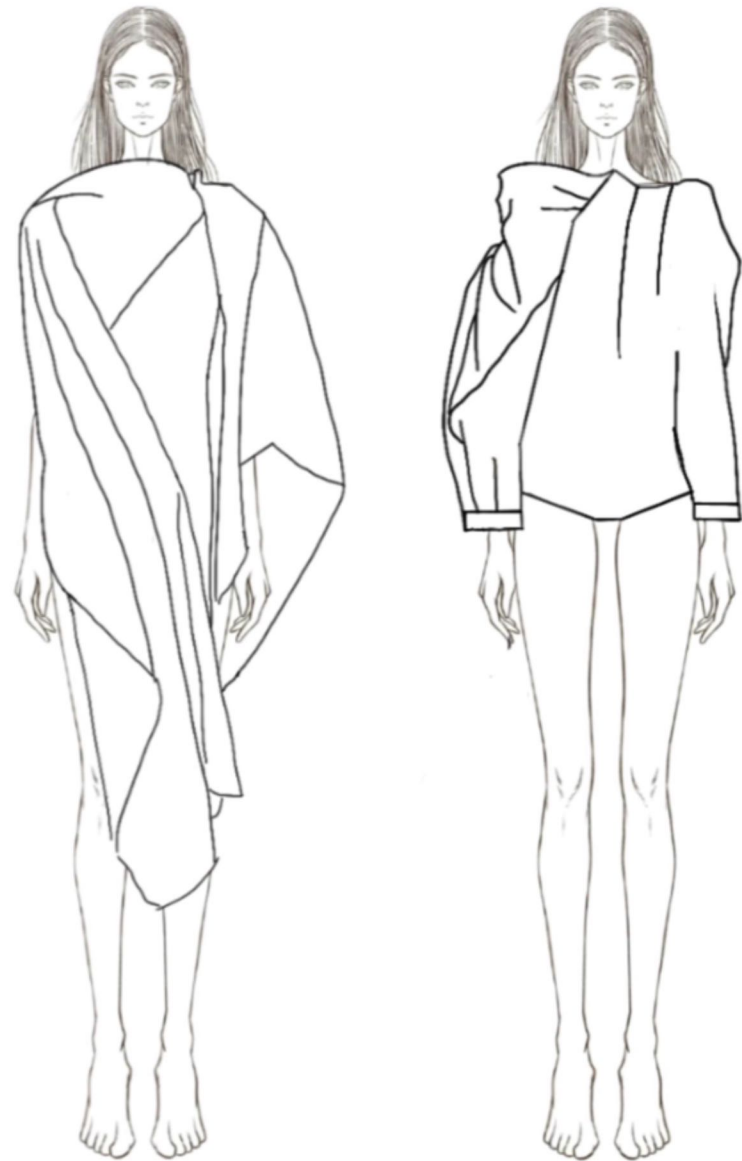


Design Development



Extract elements of form, hierarchy, folds and profile from candles, hourglasses, clocks and rings.

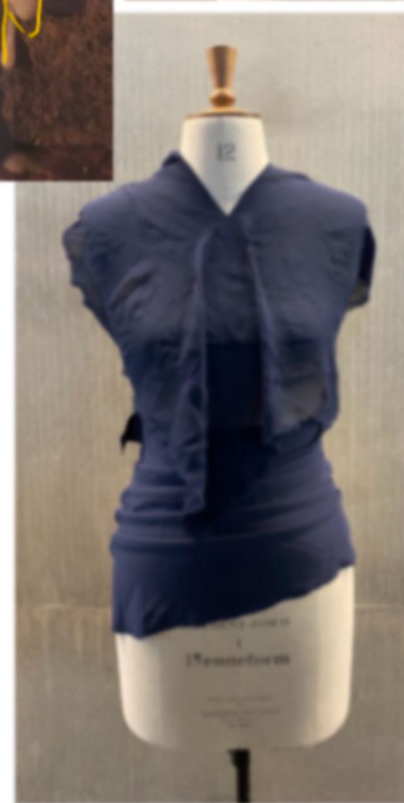
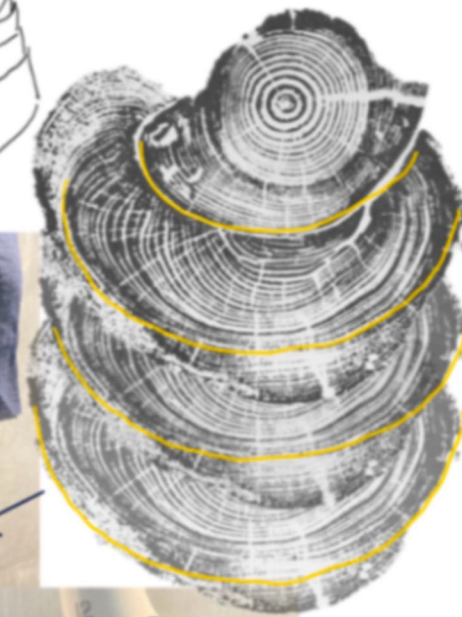
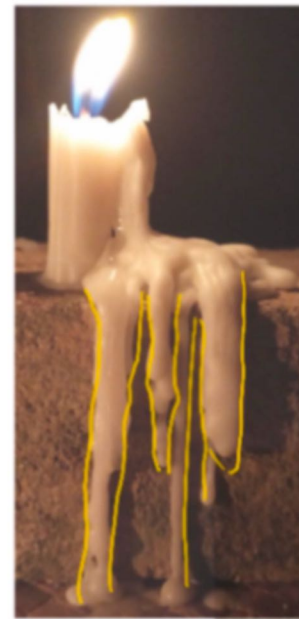
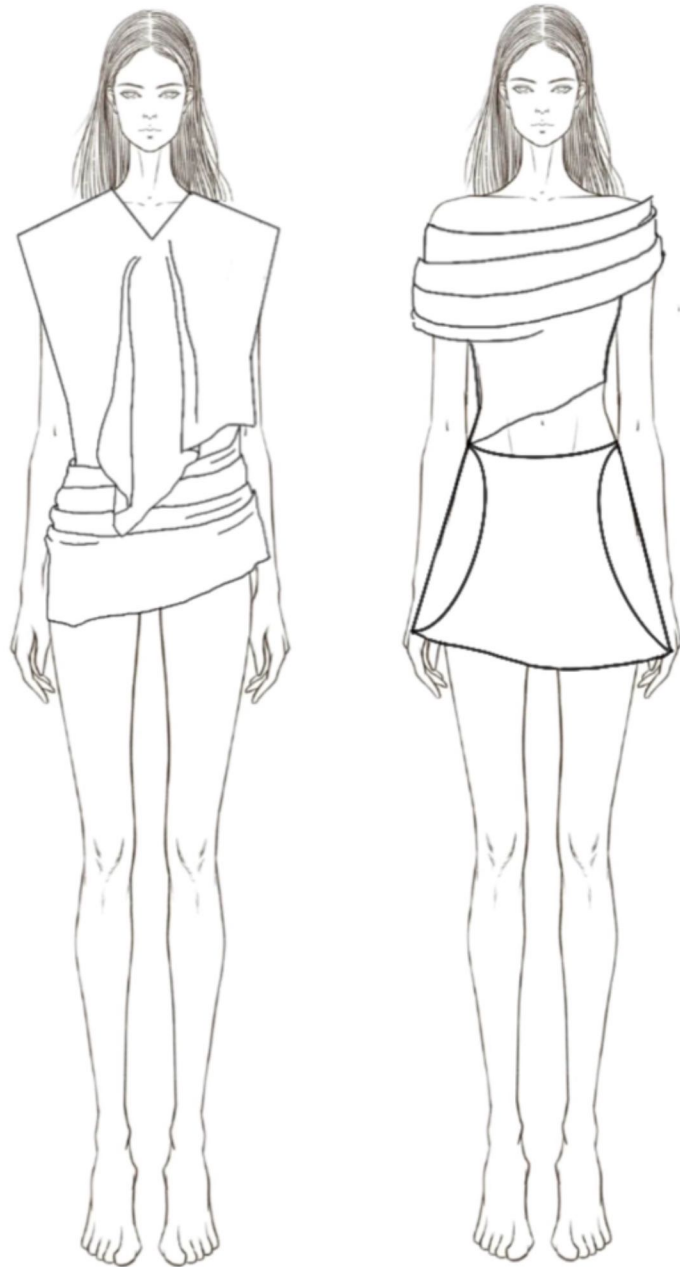
Design Development



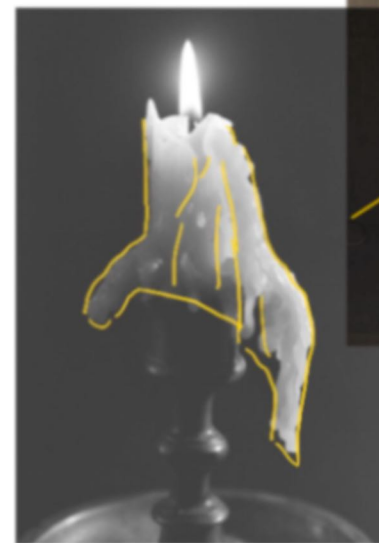
Extract the pleated elements from the melting form of the candle and the silhouette of the clothing from the outline of the growth rings.

Design Development

The pleated silhouette of the fabric hanging down is similar to the shape of a melting candle. Extract elements from the hierarchical contours of the growth rings.

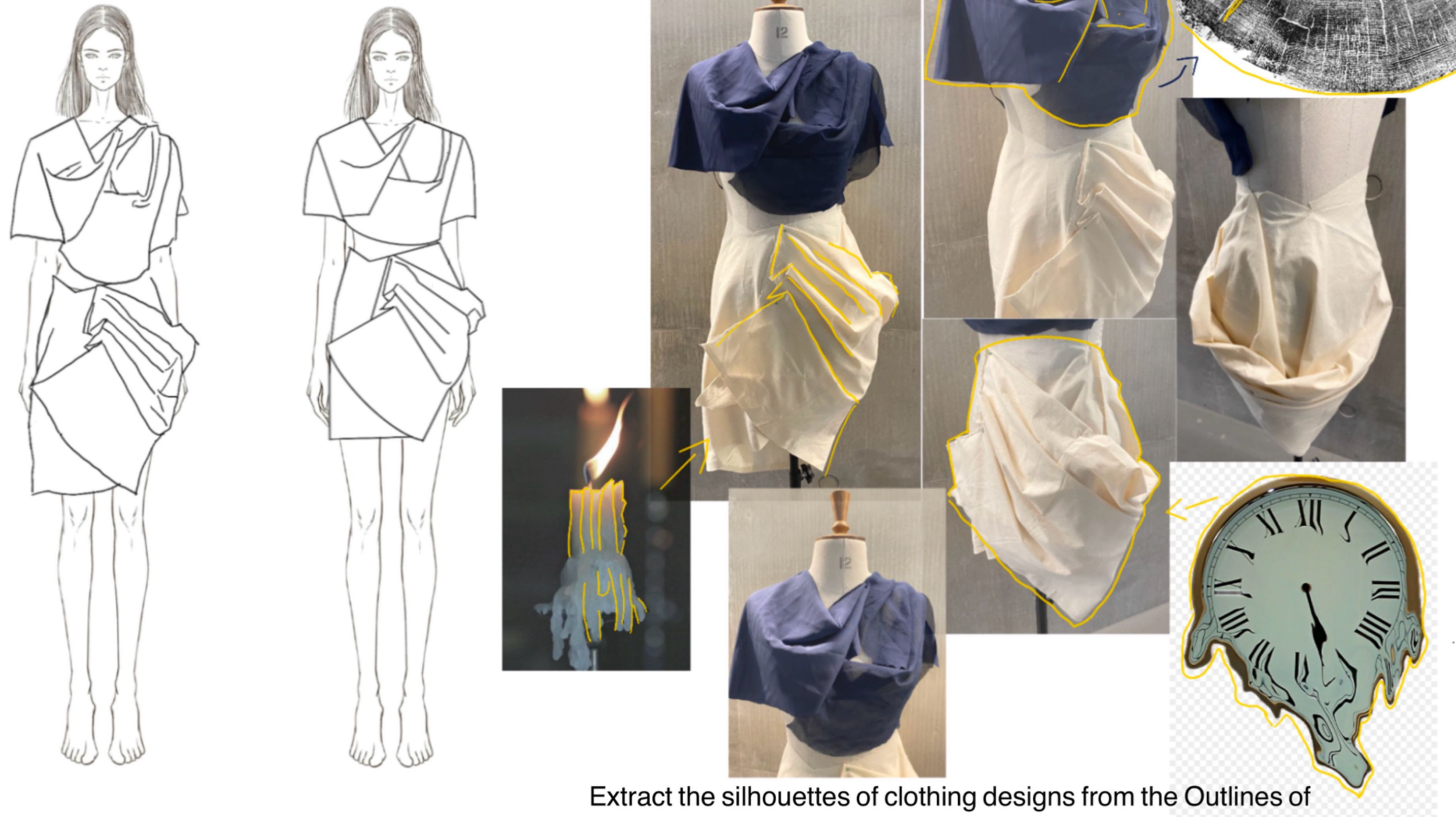


Design Development



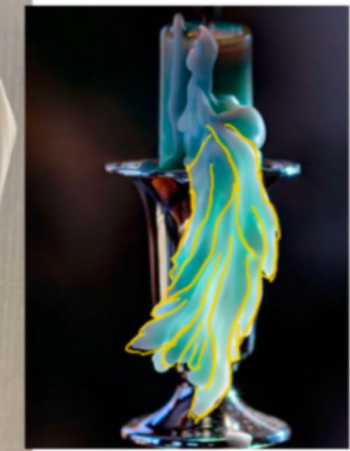
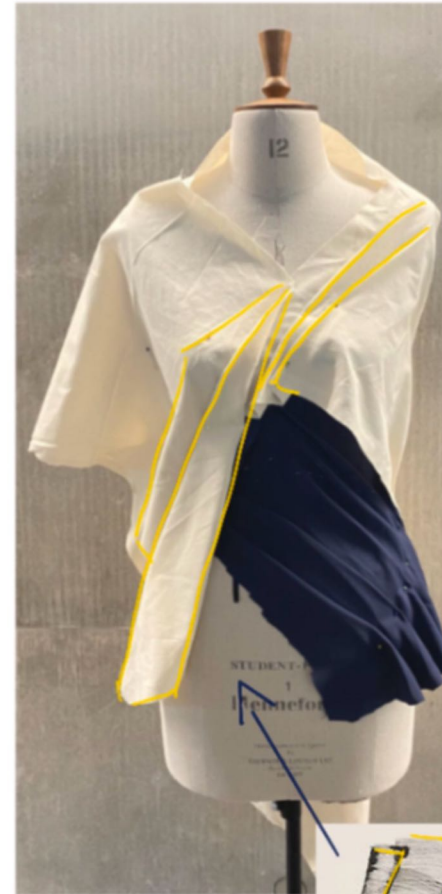
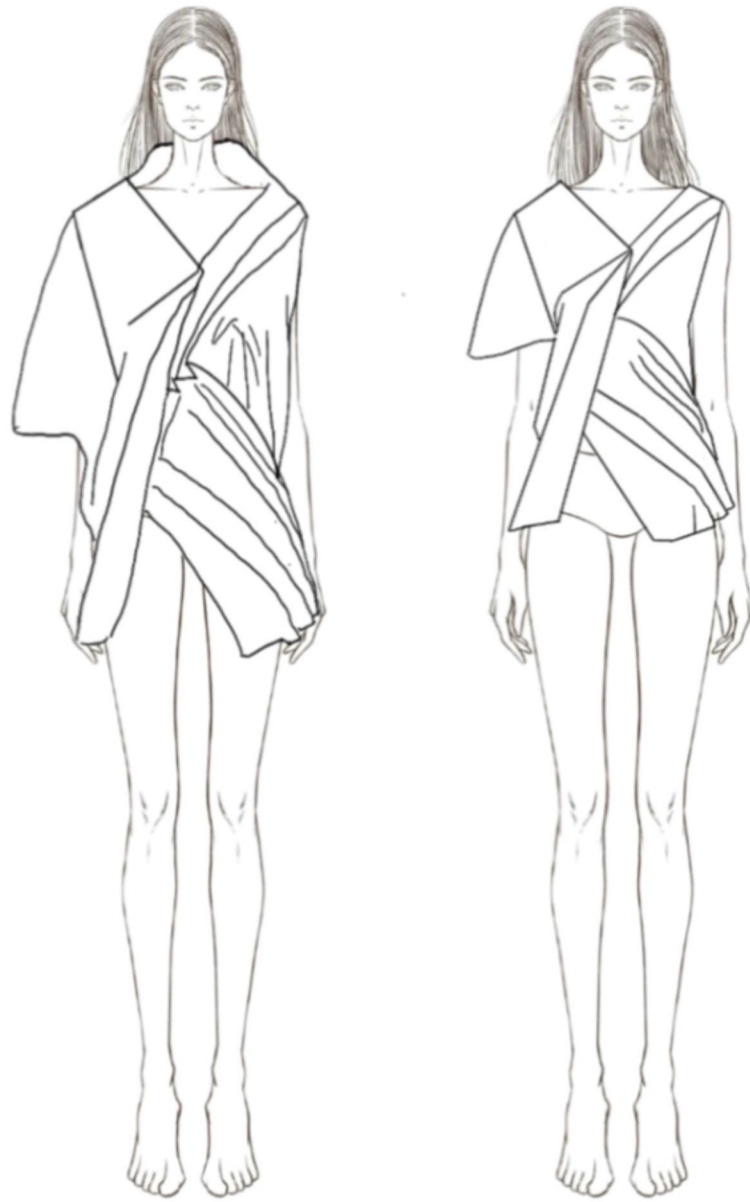
The pleats and silhouettes of the fabric are similar to the melting form of a candle. Extract elements from the layered Outlines of the tree rings to give the clothing a sense of layering.

Design Development



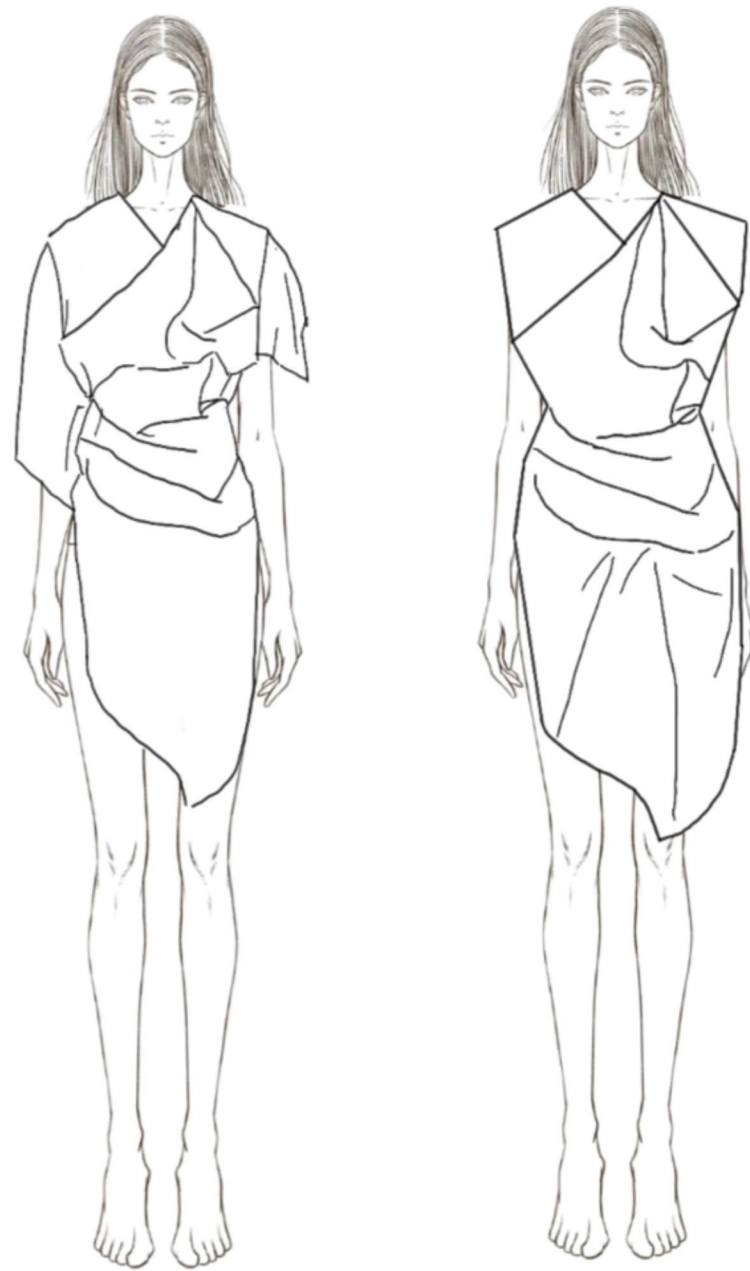
Extract the silhouettes of clothing designs from the Outlines of clocks and watches, and draw design inspirations from candles and tree rings.

Design Development



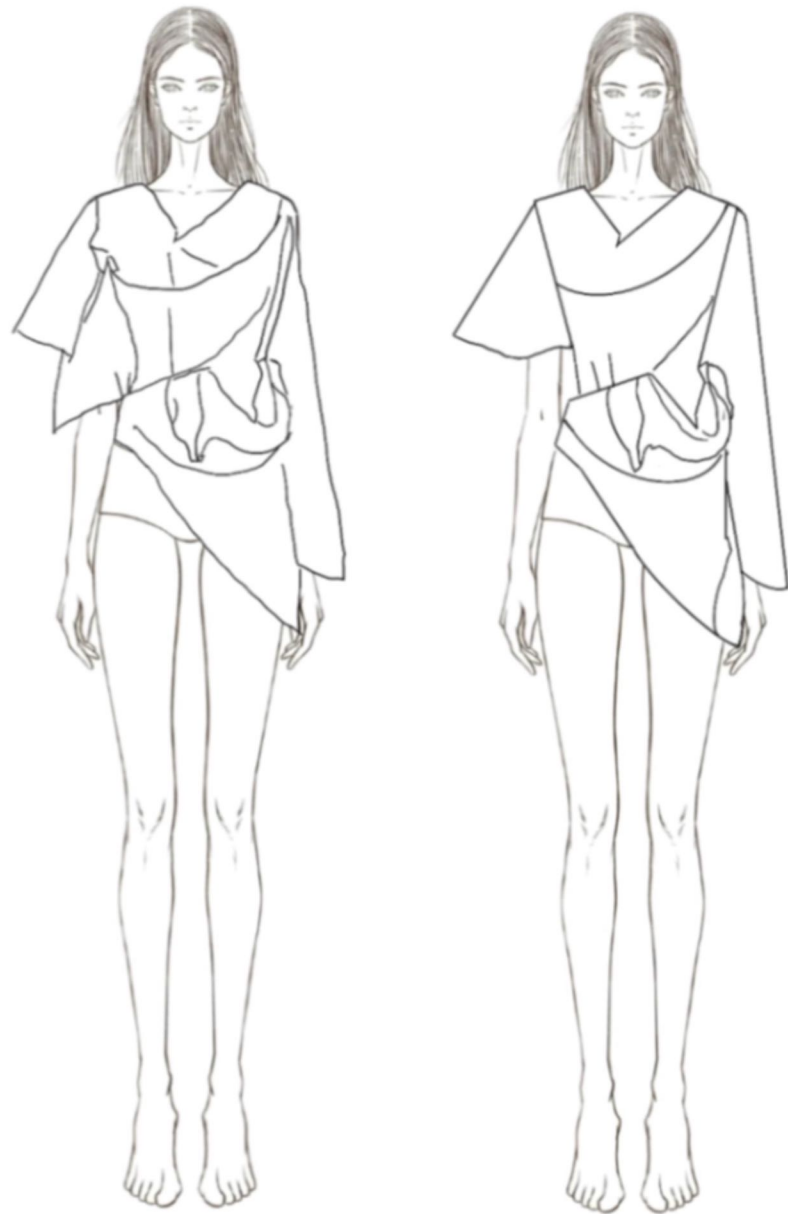
Extract the morphology of the folds.

Design Development



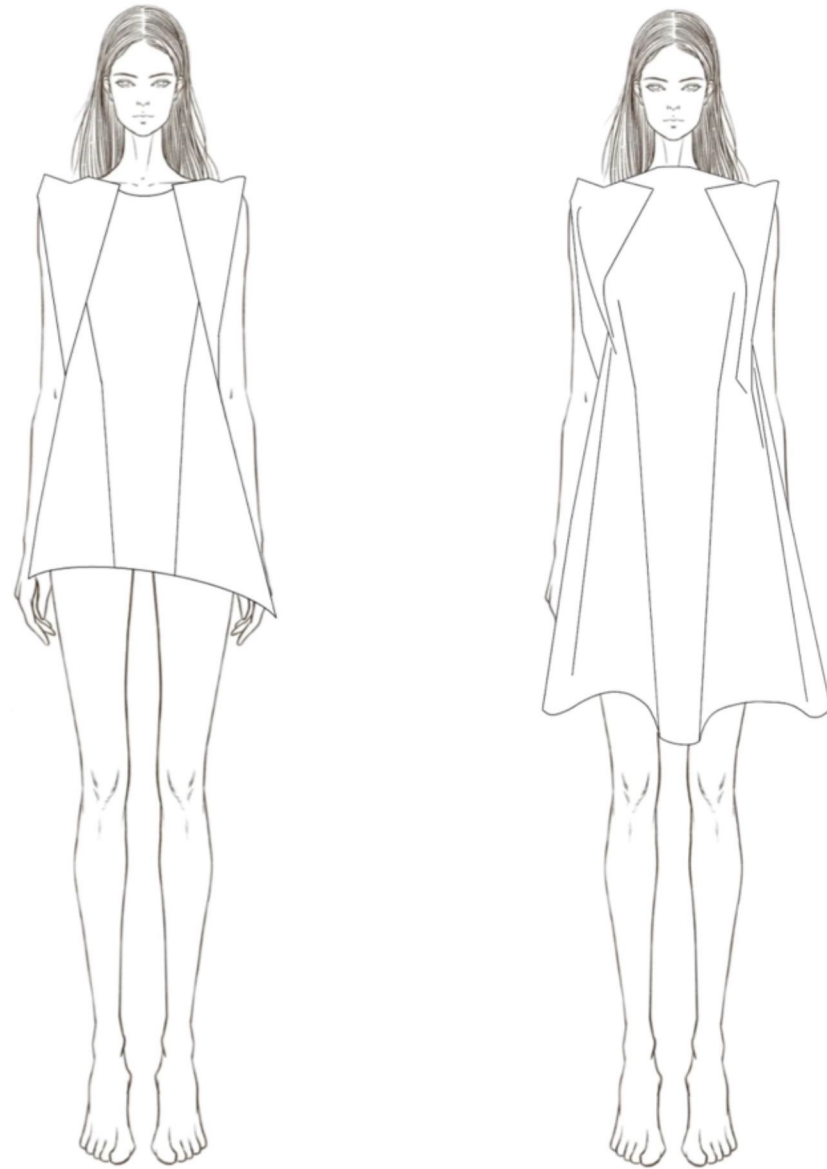
Extract design elements from the texture of the growth rings and the texture of the melted candles.

Design Development



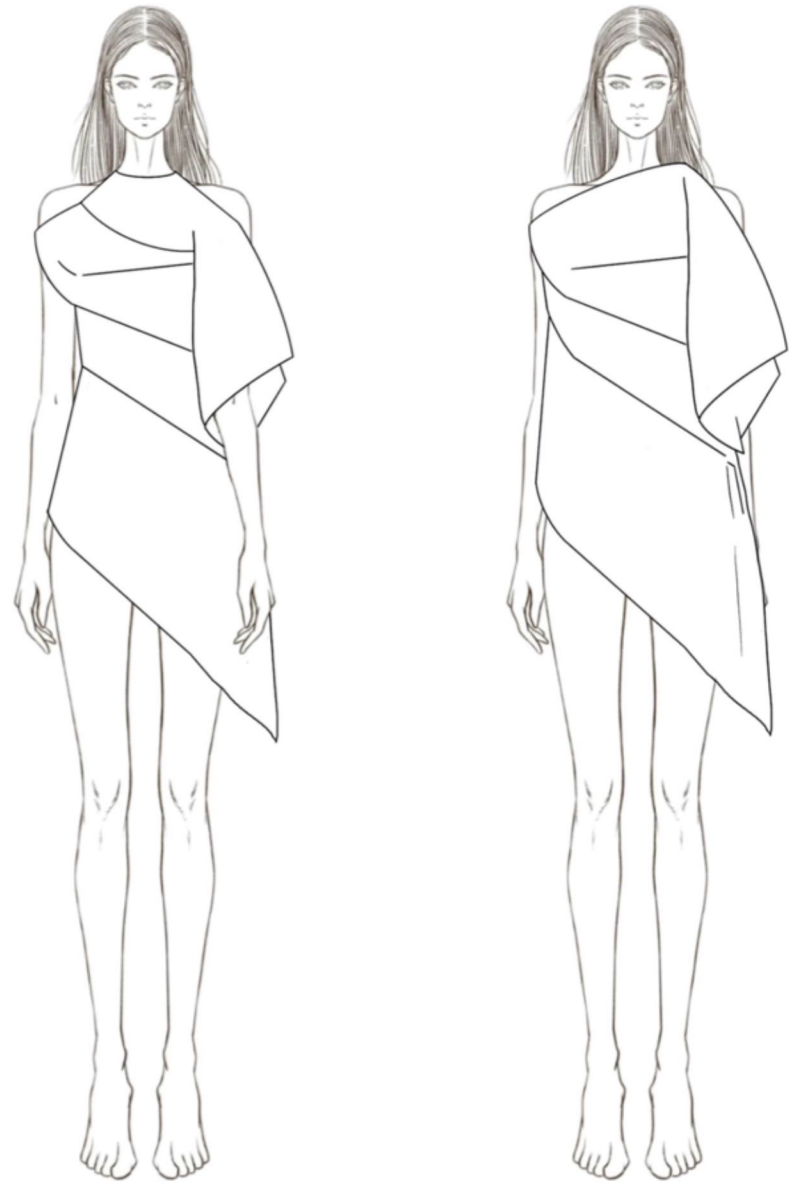
Extract the pleated design elements from the texture of the growth rings, the texture of the melted candles and the outline of the clock.

Design Development



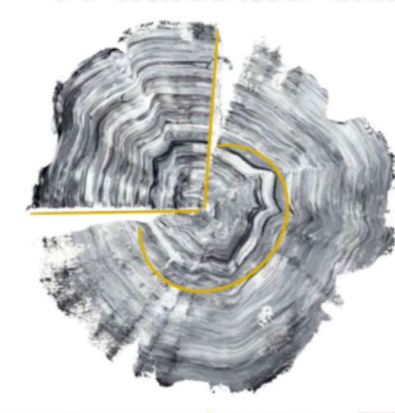
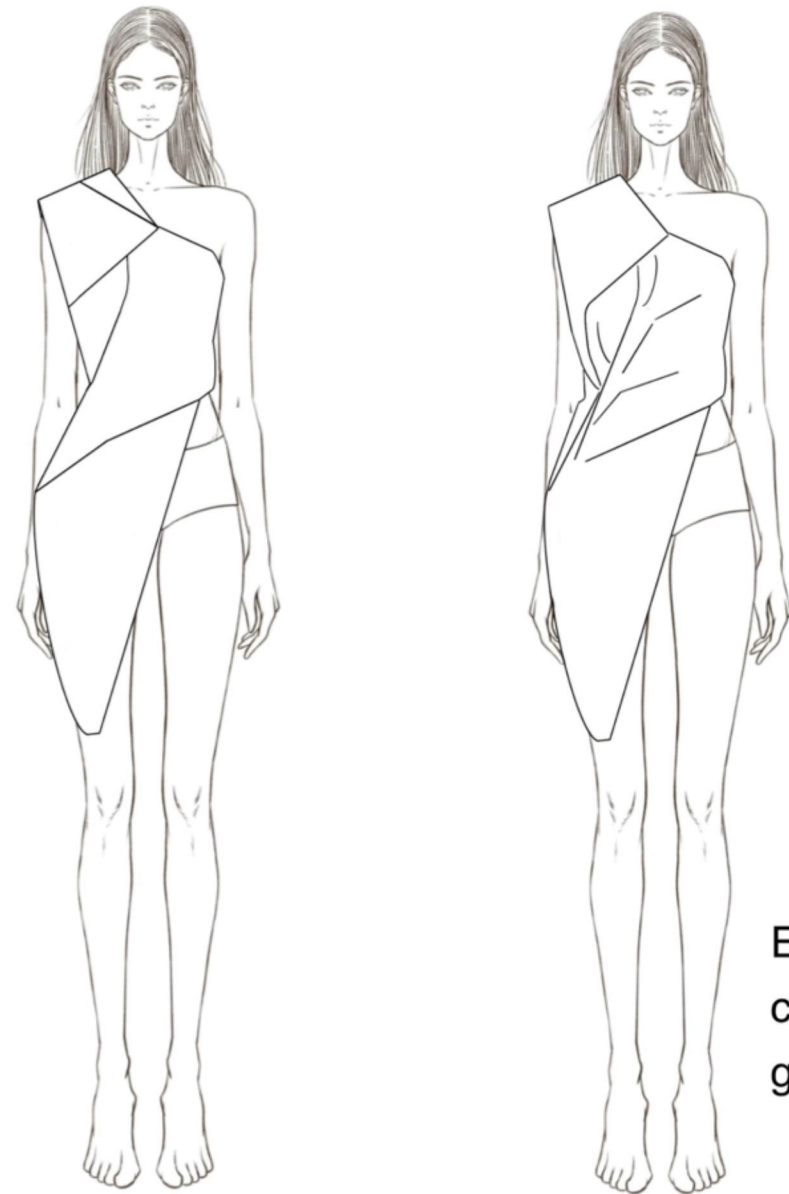
Extract the elements of folds and silhouettes from the texture contours of the growth rings to bring inspiration to the subsequent design.

Design Development



Extract the elements of folds and contours from the texture contours of the growth rings.

Design Development



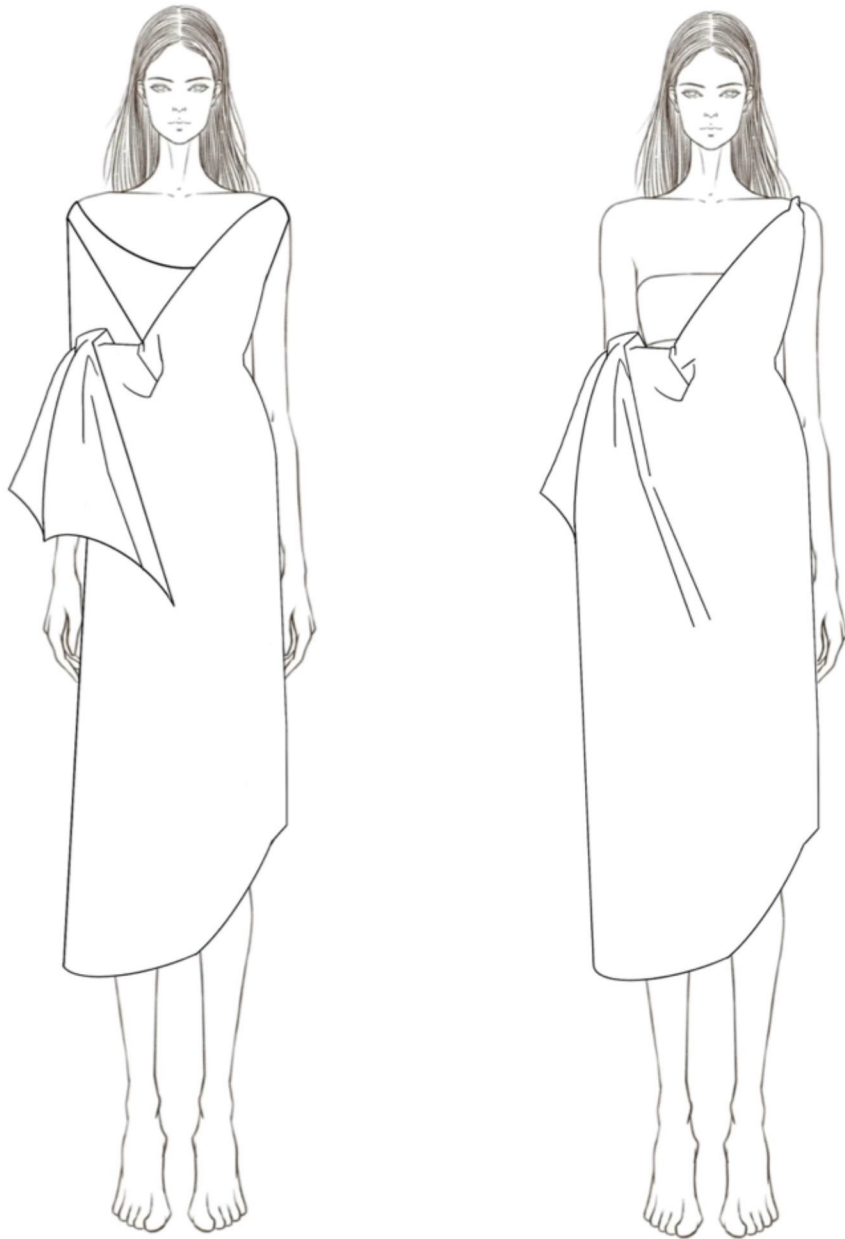
Extract the elements of pleats and clothing contours from the texture outline of the growth rings.

Design Development



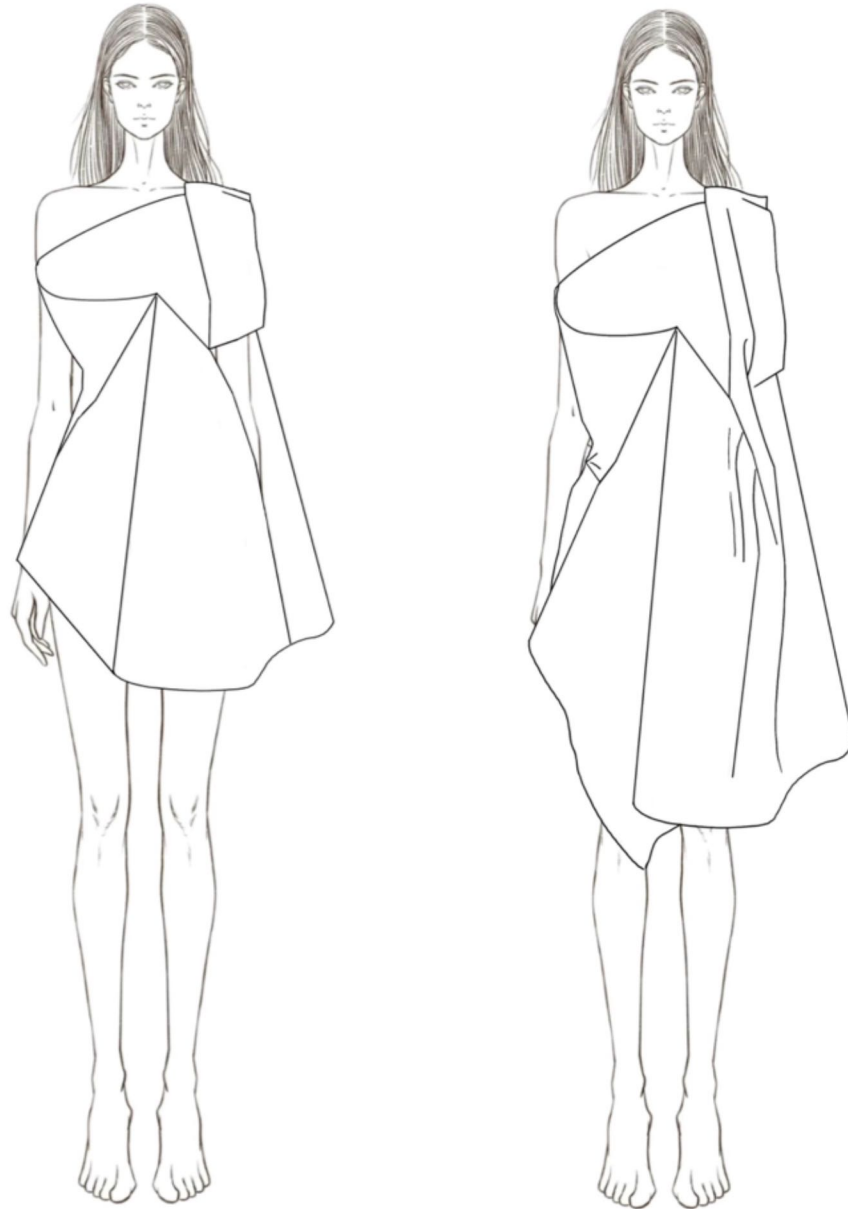
Extract elements of pleats and clothing silhouettes from the textures and contours of tree rings and candles.

Design Development



Extract the shapes of pleats and clothing silhouettes from the textures and contours of melted candles.

Design Development



Extract the shapes of pleats and clothing silhouettes from the textures and contours of melted candles, tree rings and hourglasses.

Design Development



Extract the Outlines of pleats and clothing from the textures and contours of melted candles and tree rings.

Design Development



Extract the contours of pleats and clothes from the dynamic textures and contours of tree rings and clocks.

Consumer Board

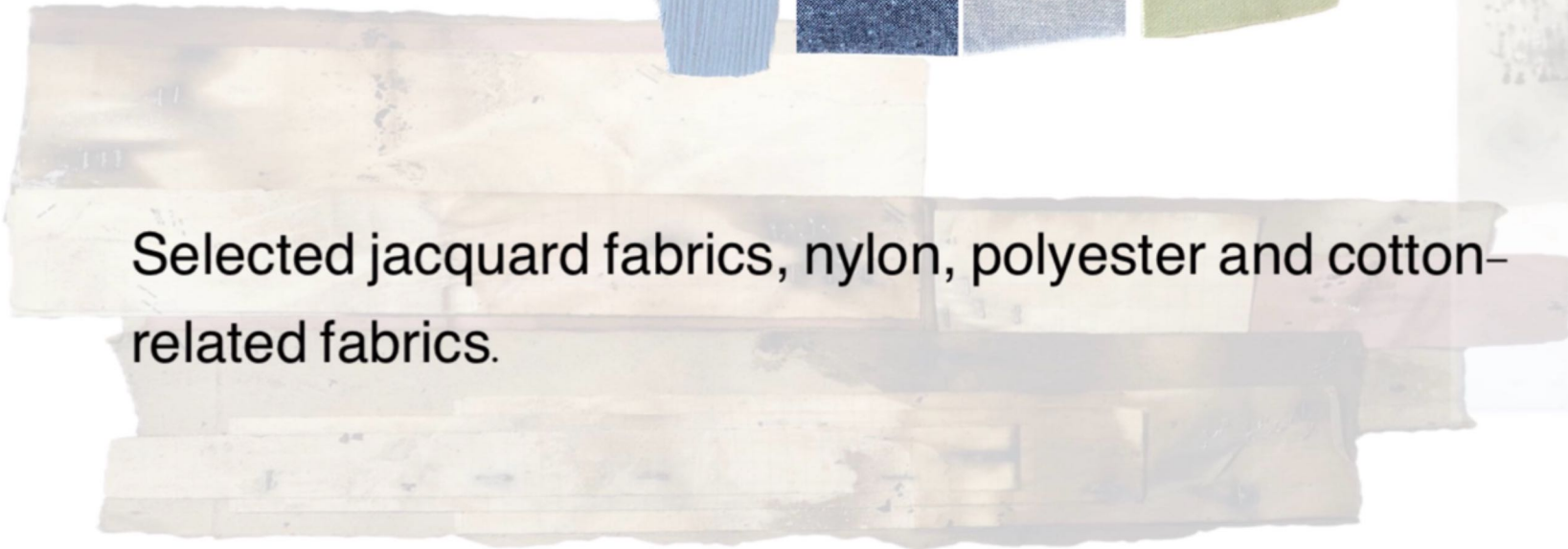


Age: 20-35

Occupation: Actor, blogger, we-media person, designer.

Hobbies and interests: Photo shoot, Fashion week, fashion show, magazine shoot, outfit sharing, makeup.

Favorite brand: Vivienne Tam, M Essential, UMA WANG, Yohji Yamamoto.



Selected jacquard fabrics, nylon, polyester and cotton-related fabrics.



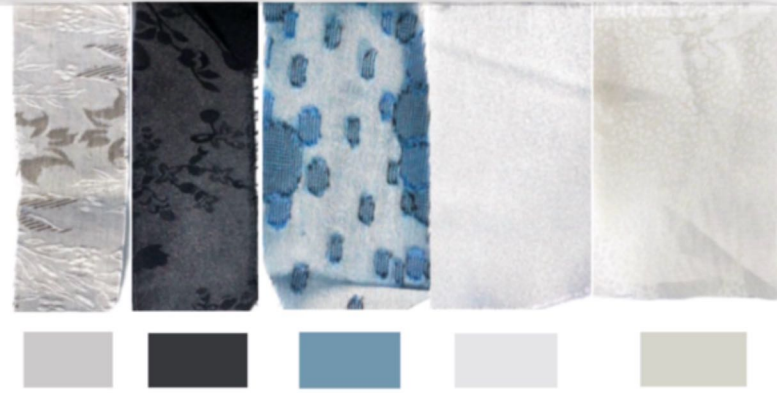
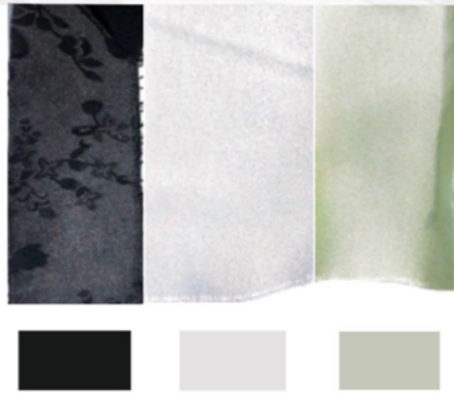
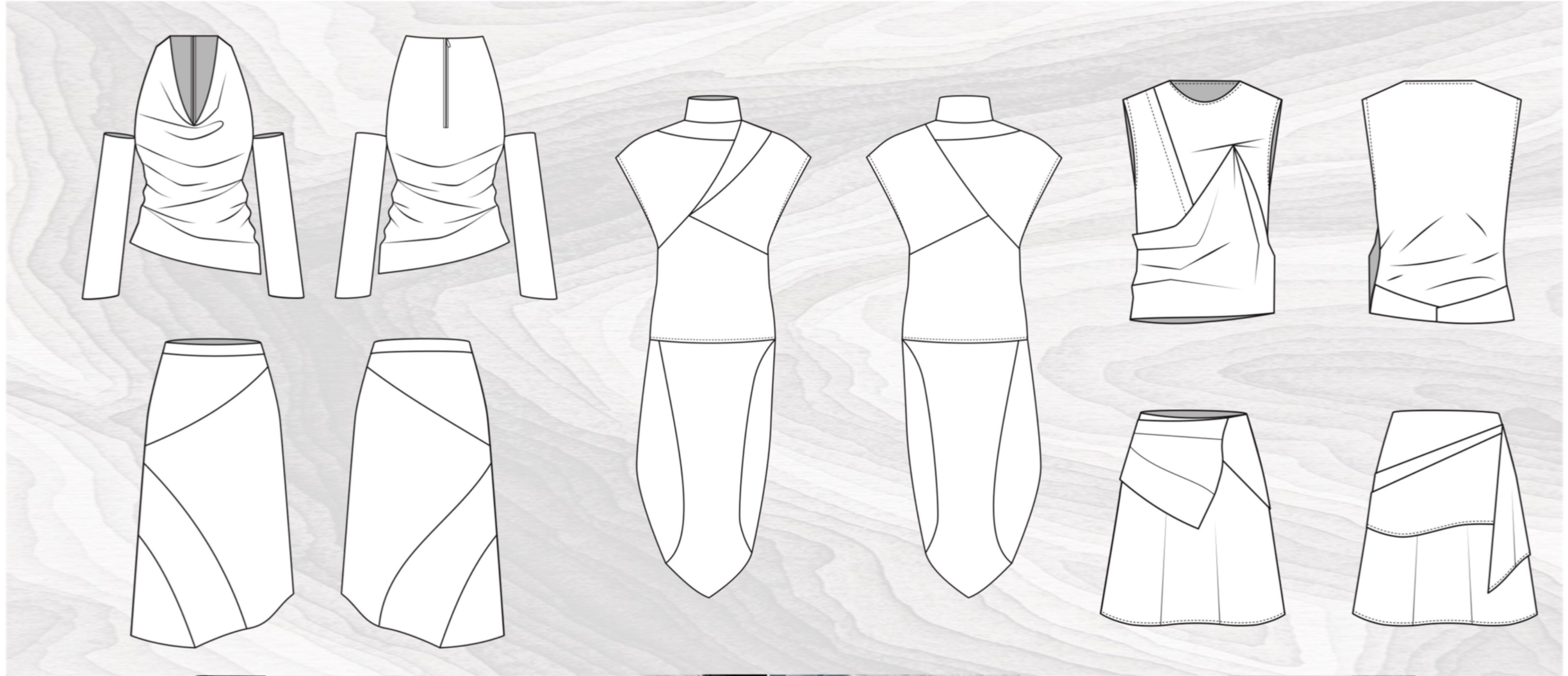
Line Up



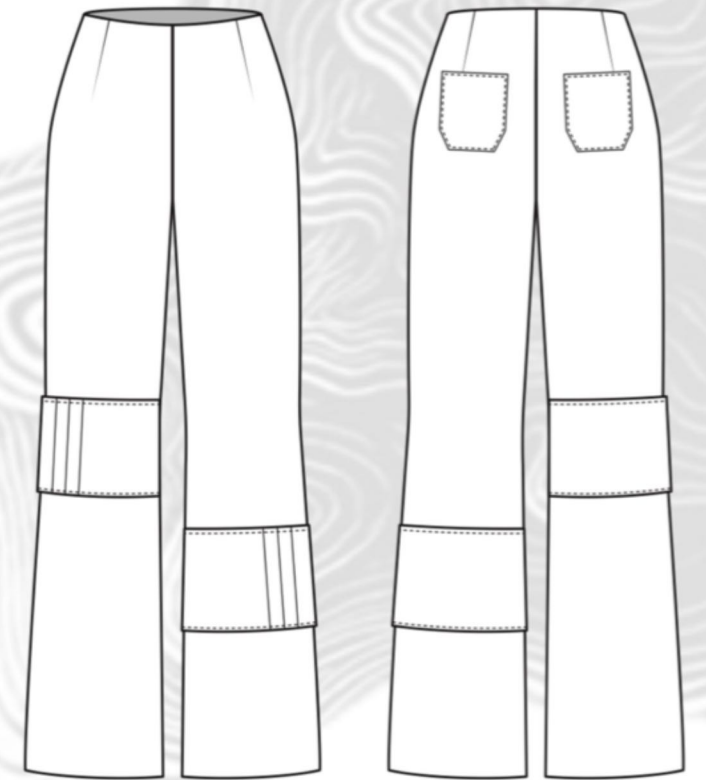
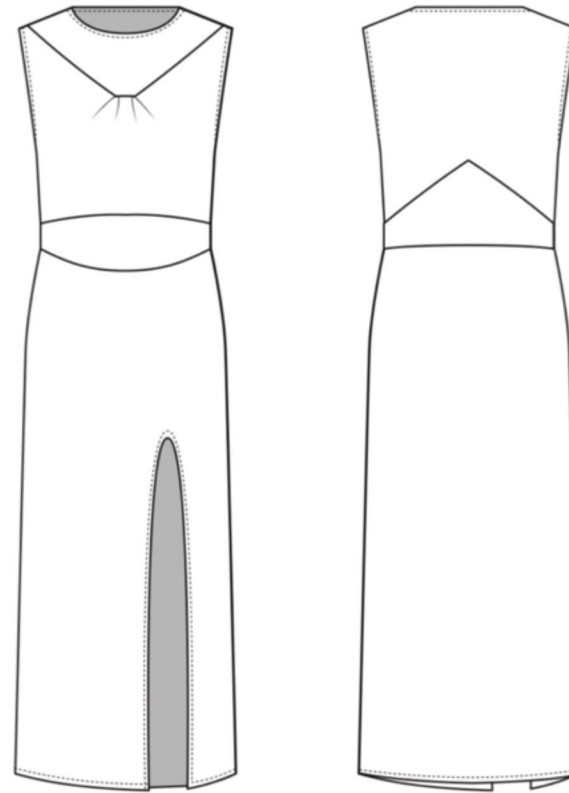
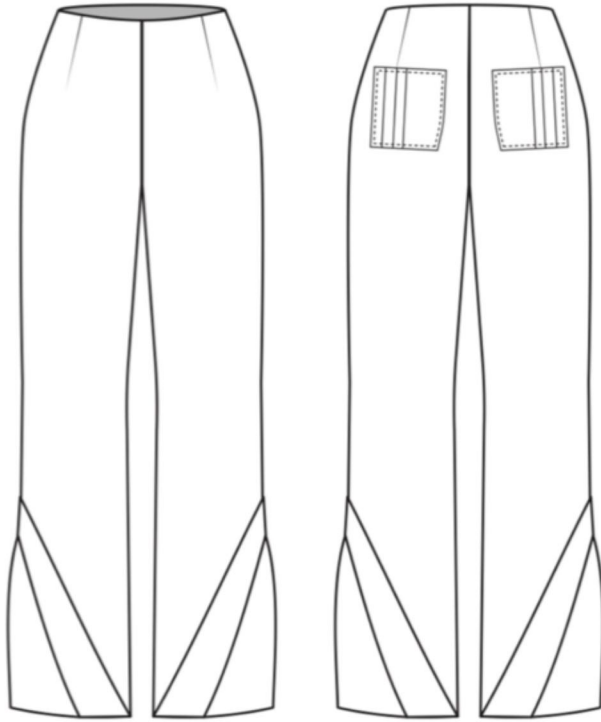
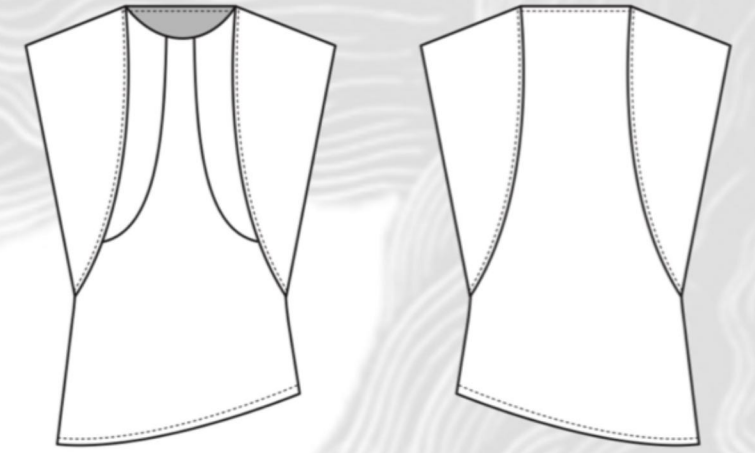
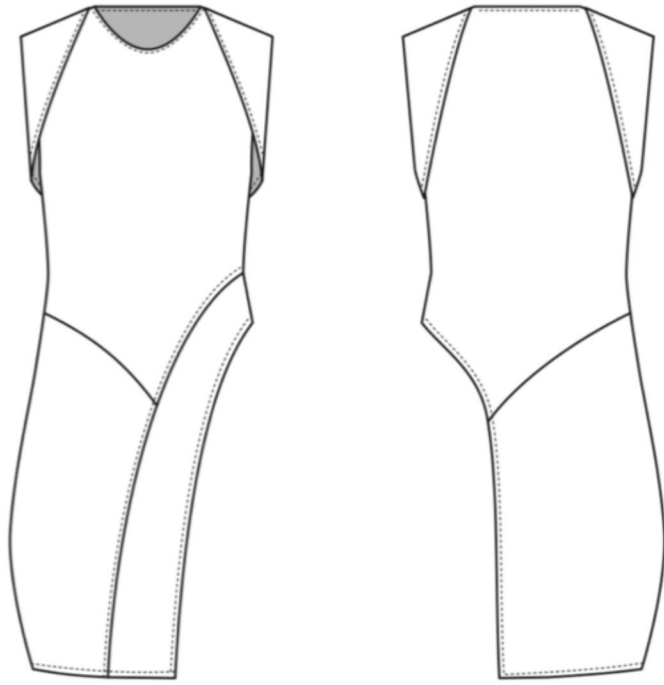
Line Up



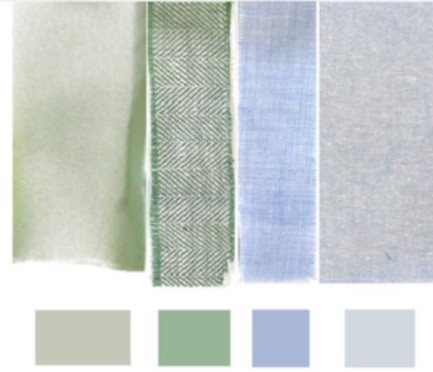
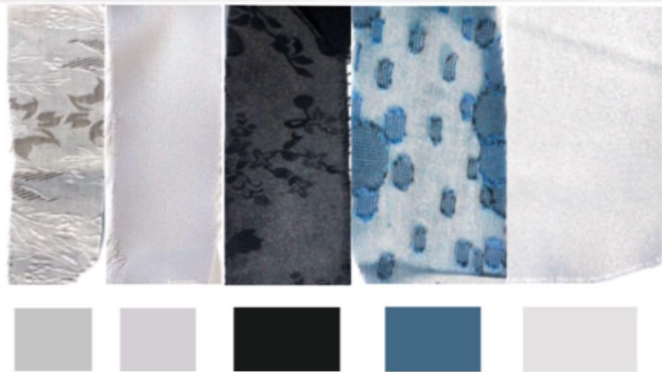
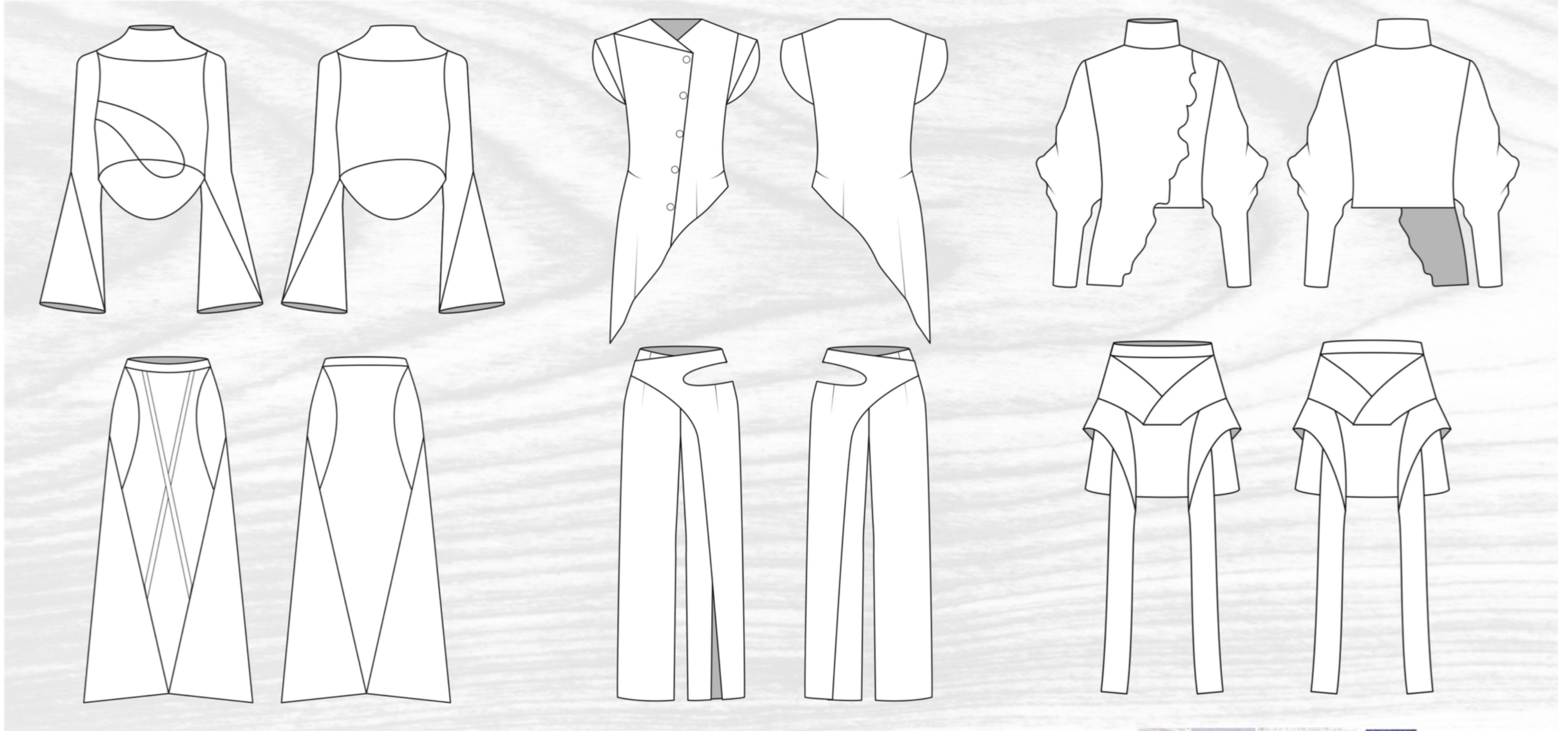
Range Plan



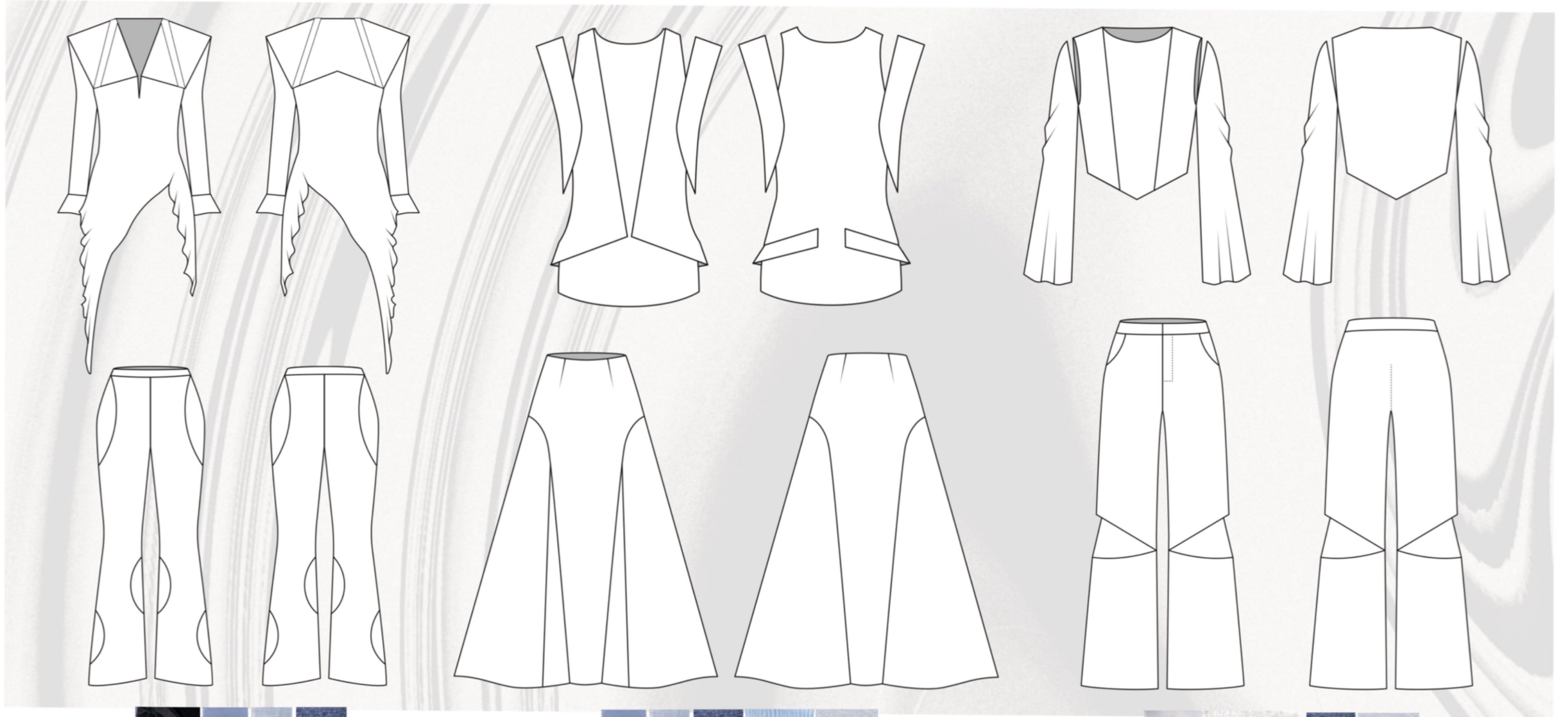
Range Plan



Range Plan

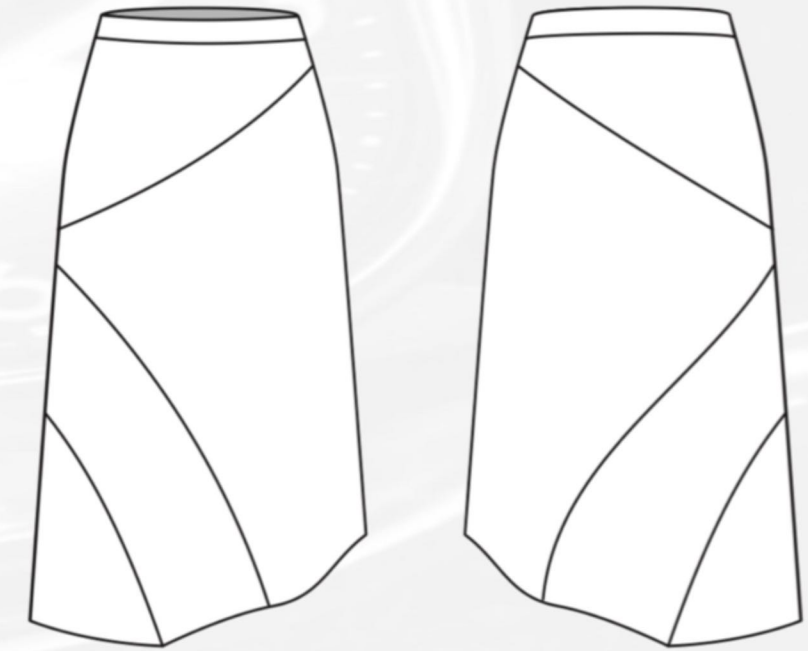
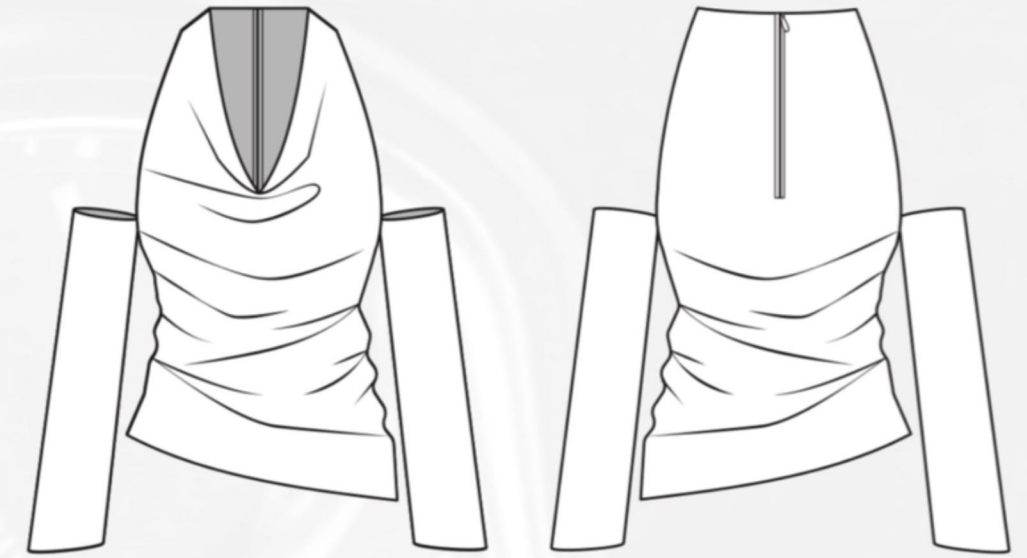
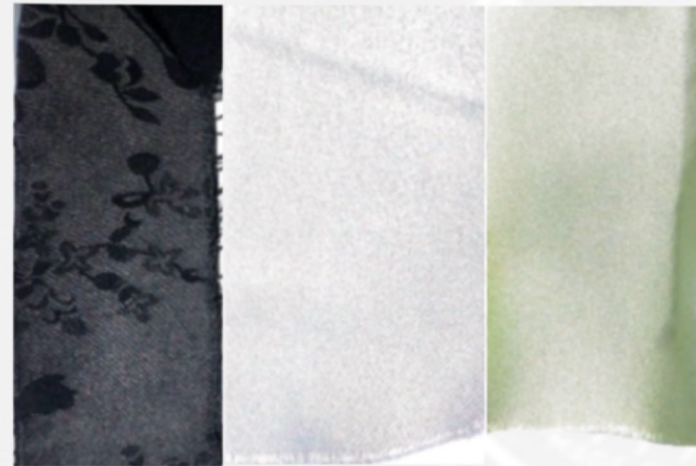


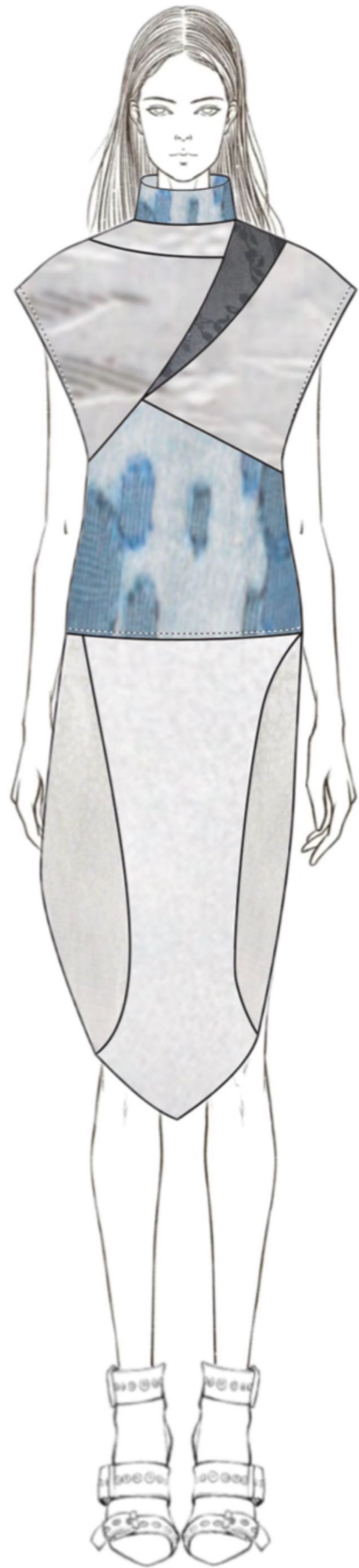
Range Plan



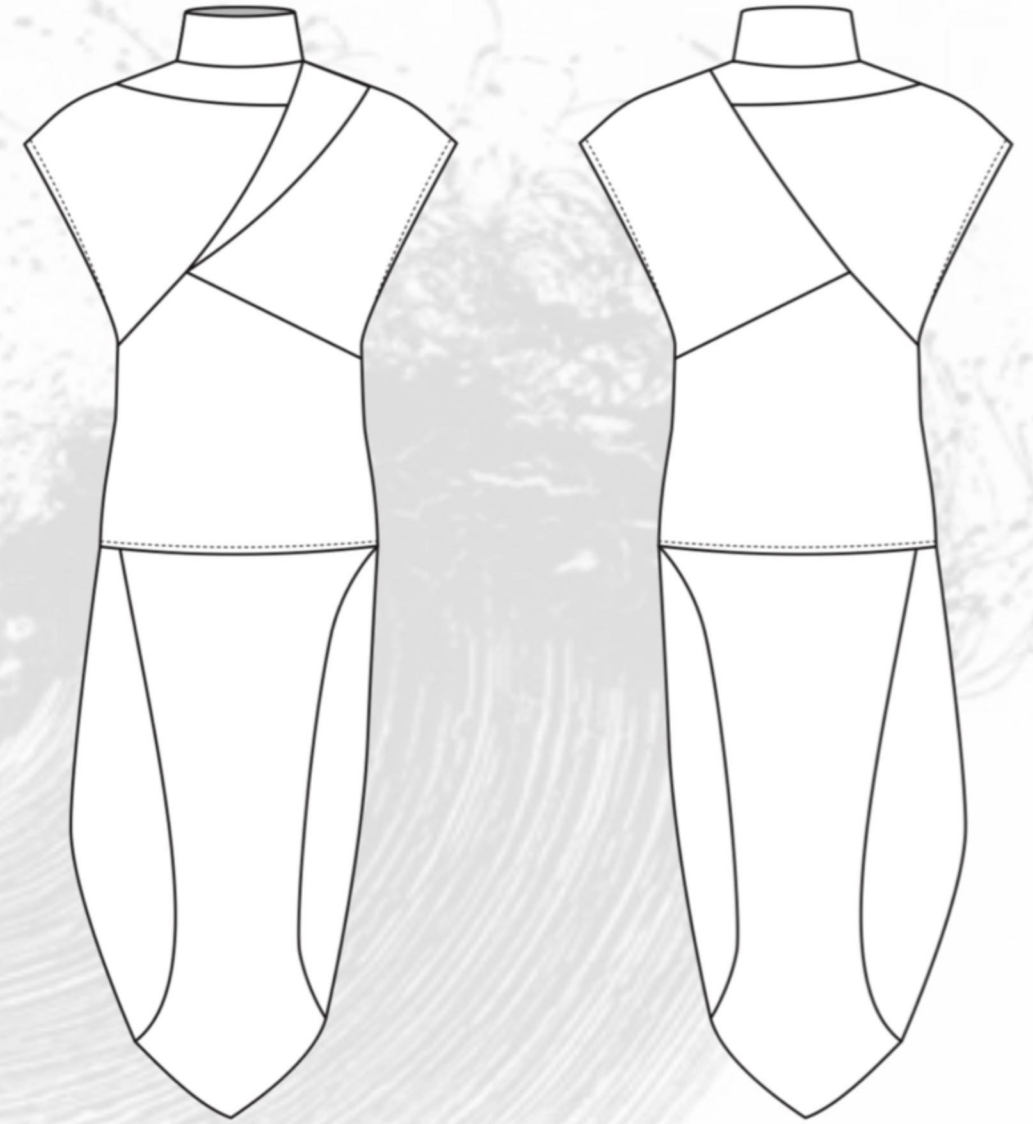
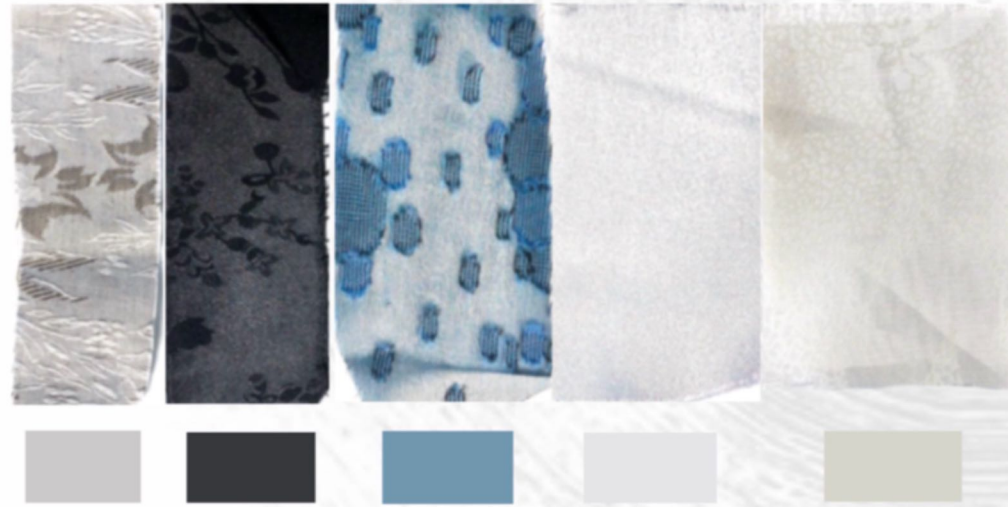


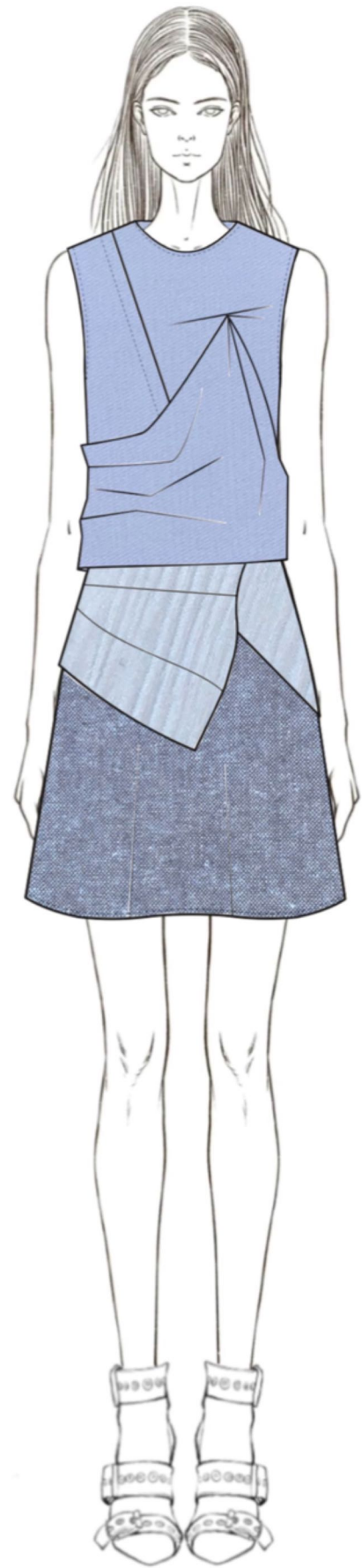
Presentation Sheets





Presentation Sheets



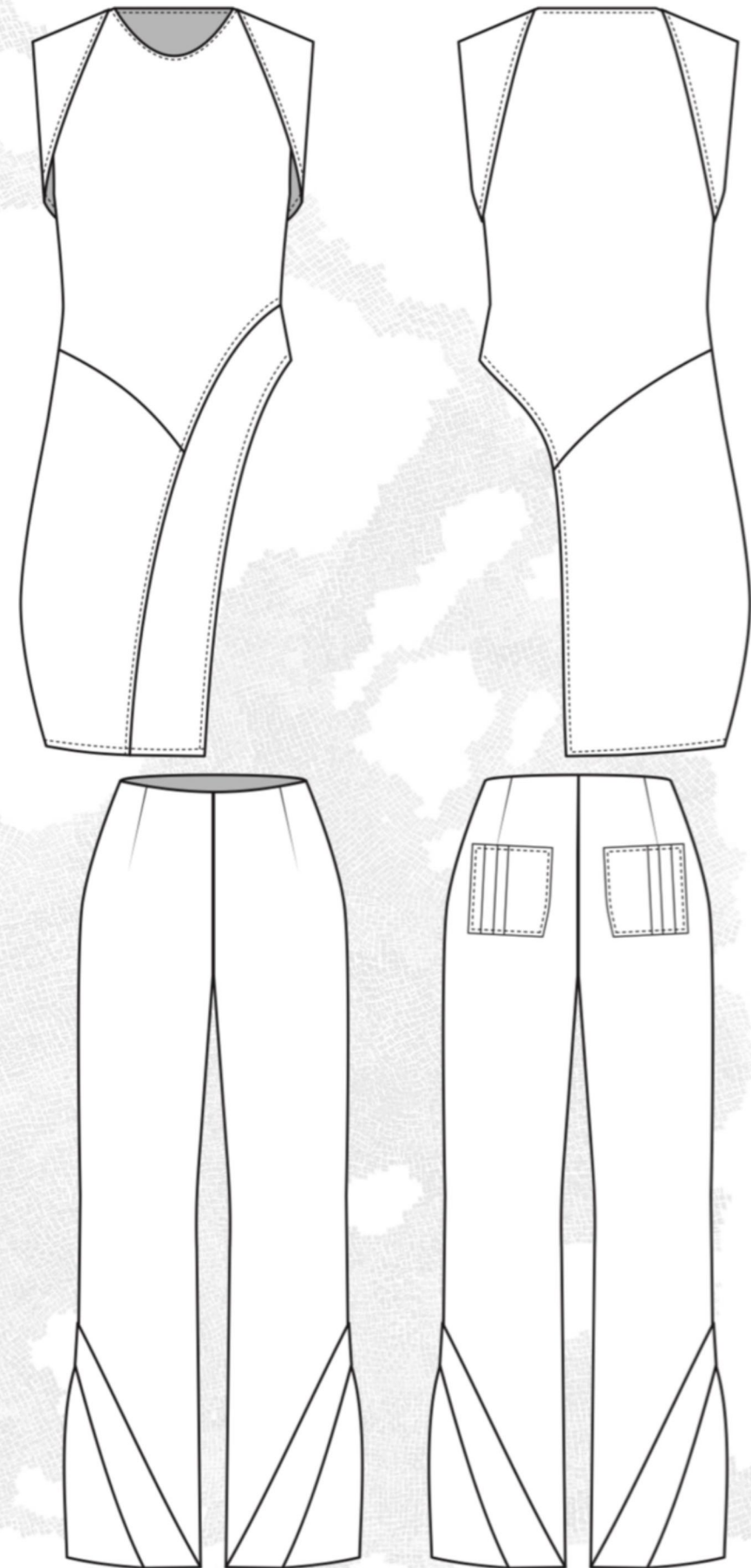


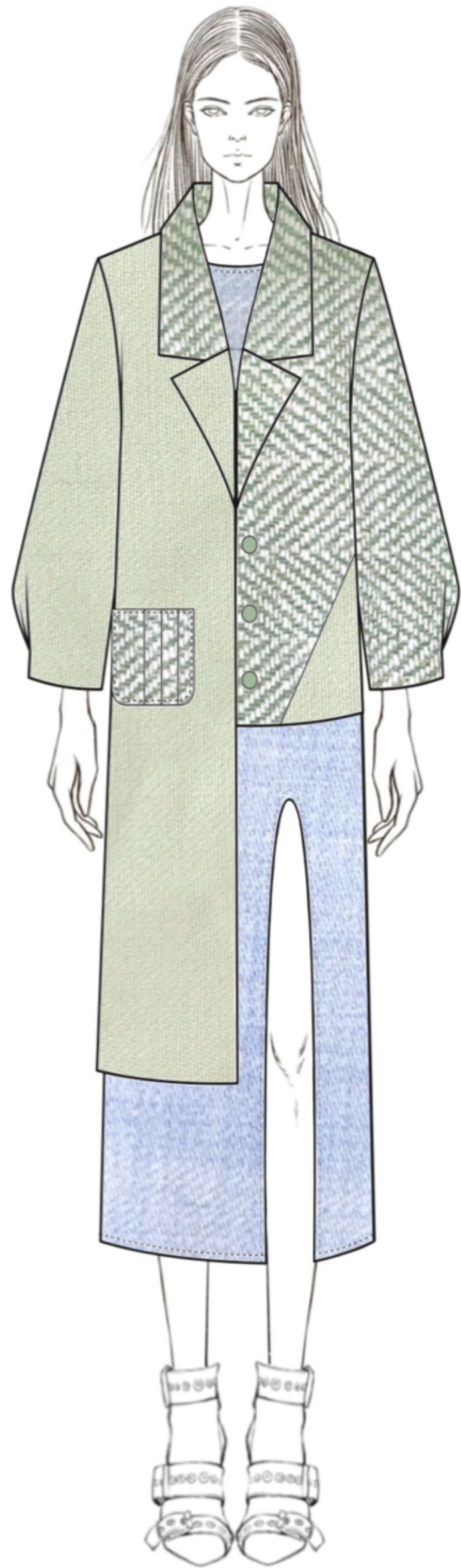
Presentation Sheets



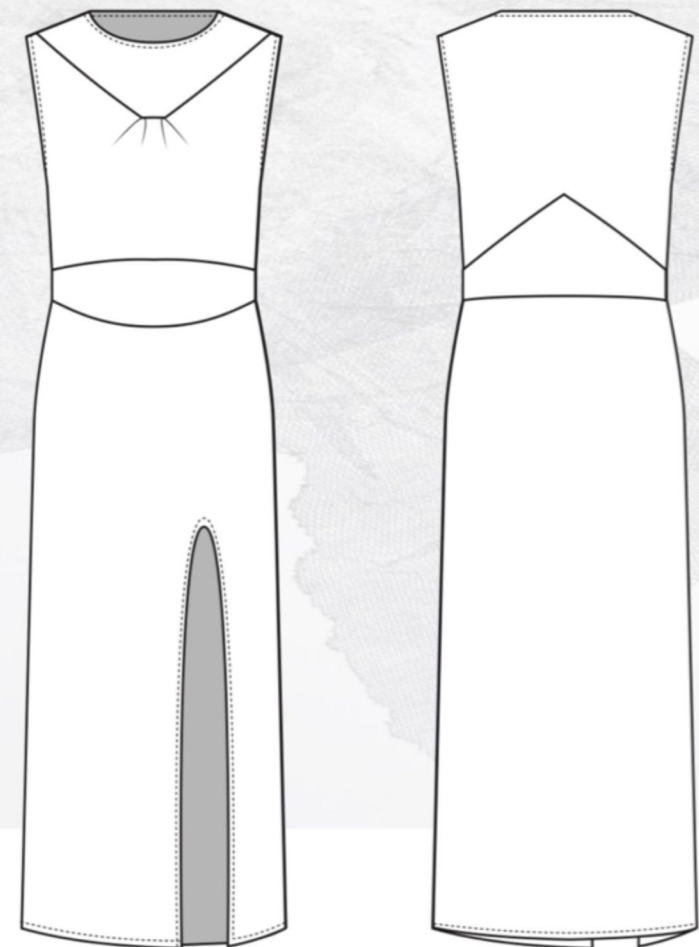


Presentation Sheets



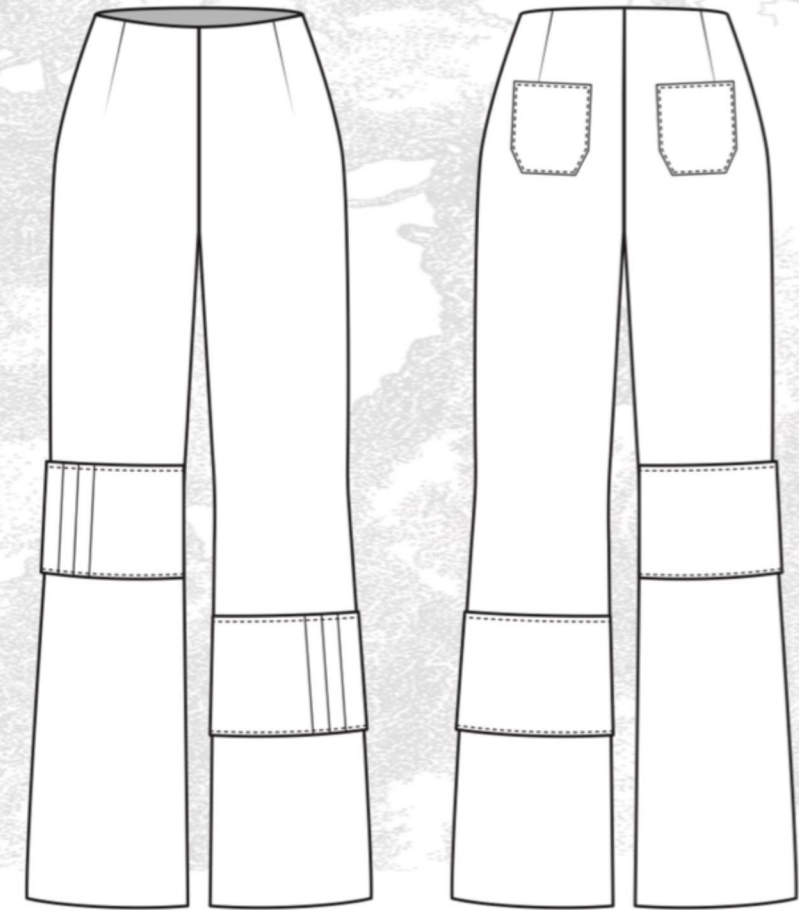


Presentation Sheets





Presentation Sheets



Outfit 1



Outfit 2



Outfit 3



Outfit 4



Outfit 5



Outfit 6



