



Scattered Stage: An Art Network in Balat

Irem Azak

Where Streets Become Stages, and Everyone Plays a Part

Scattered Stage

A Decentralised Theatre Ecosystem in the Streets of Balat

Scattered Stage is a modular and decentralised theatre project that reimagines performance not as a fixed institution, but as a shared, evolving experience embedded in the everyday fabric of Istanbul's Balat district. Instead of designing a single, centralised art centre, the project proposes a network of lightweight, movable theatre hubs scattered across disused urban gaps. Each hub supports a different aspect of the amateur theatre-making process—from performance and rehearsal to costume-making, storage, and community dialogue.

Constructed from recycled materials and timber structures, the hubs are easily assembled, disassembled, and shared among local theatre groups. Through collaboration with university theatre clubs and neighbourhood residents, the project promotes sustainability, participation, and cultural inclusivity. The flexible theatre kit system allows each hub to adapt to the needs of specific performances or seasons—ranging from open-air summer plays to winter setups with insulated covers and heating.

Scattered Stage transforms the streets into stages, residents into collaborators, and architecture into a tool for dialogue, expression, and care. It challenges the centralisation of cultural production and instead builds a participatory, localised theatre landscape—responsive to place, time, and people.



Spatial Distribution of the Scattered Stage Hubs Across Balat

This map illustrates the decentralized structure of Scattered Stage through five distinct hubs embedded within the urban fabric of Balat. Hub A, the main performance stage, anchors the network—while Hubs B, C, D, and E support the wider amateur theatre ecosystem, including costume production, set workshops, community forums, and exhibitions.

Spread across disused and overlooked urban gaps, each hub reactivates a different layer of the neighbourhood and fosters collaboration between performers and local residents.

This scattered layout challenges the dominance of centralized cultural institutions by embedding creativity directly into the everyday rhythm of the street.



Axonometric representation and street texture



ART IS
THE SOUL OF
VICTORY

A MIDSUMMER
NIGHT'S DREAM

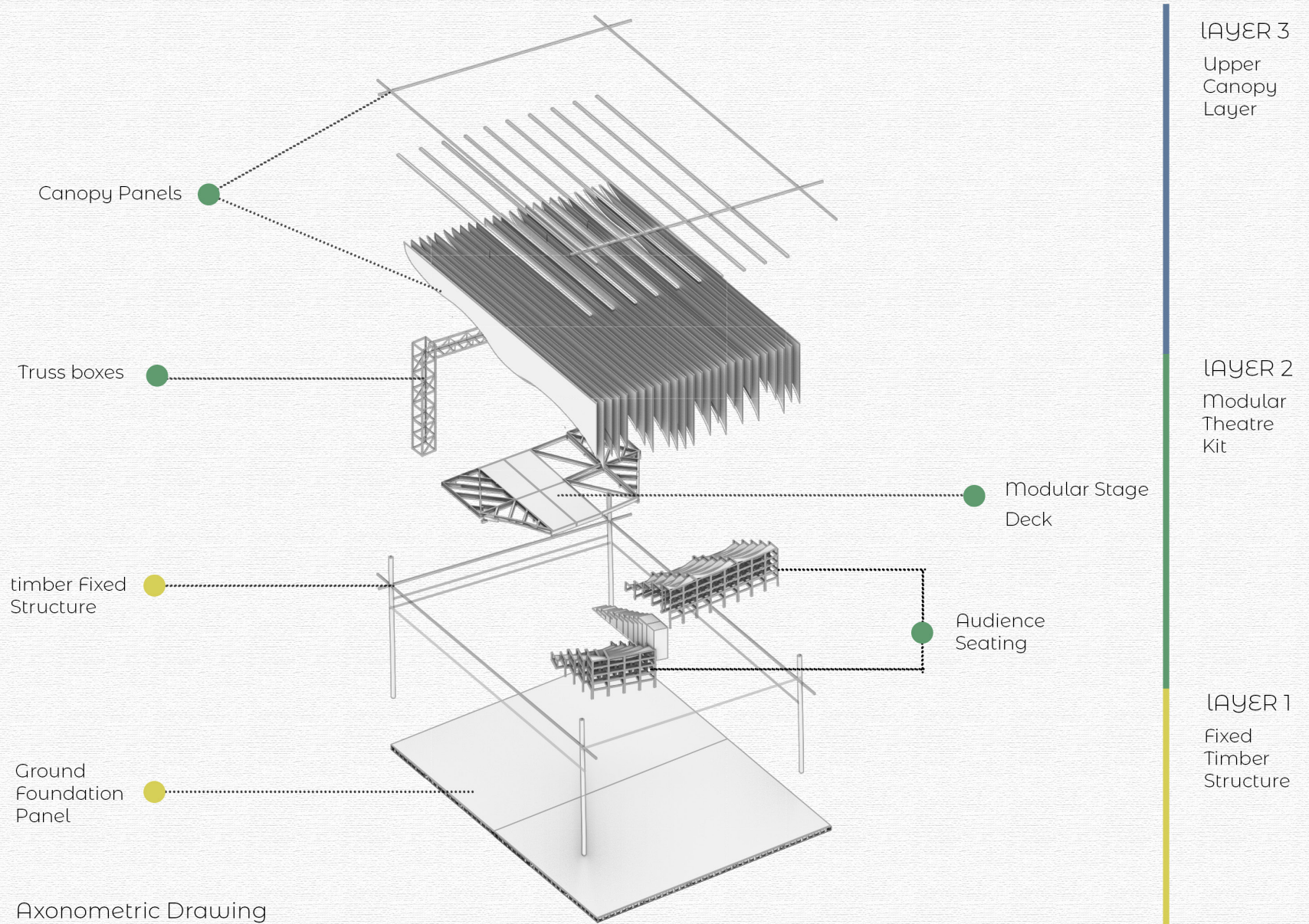
BY WILL
SHAKESPEARE
SCATTERED
12 JUNE

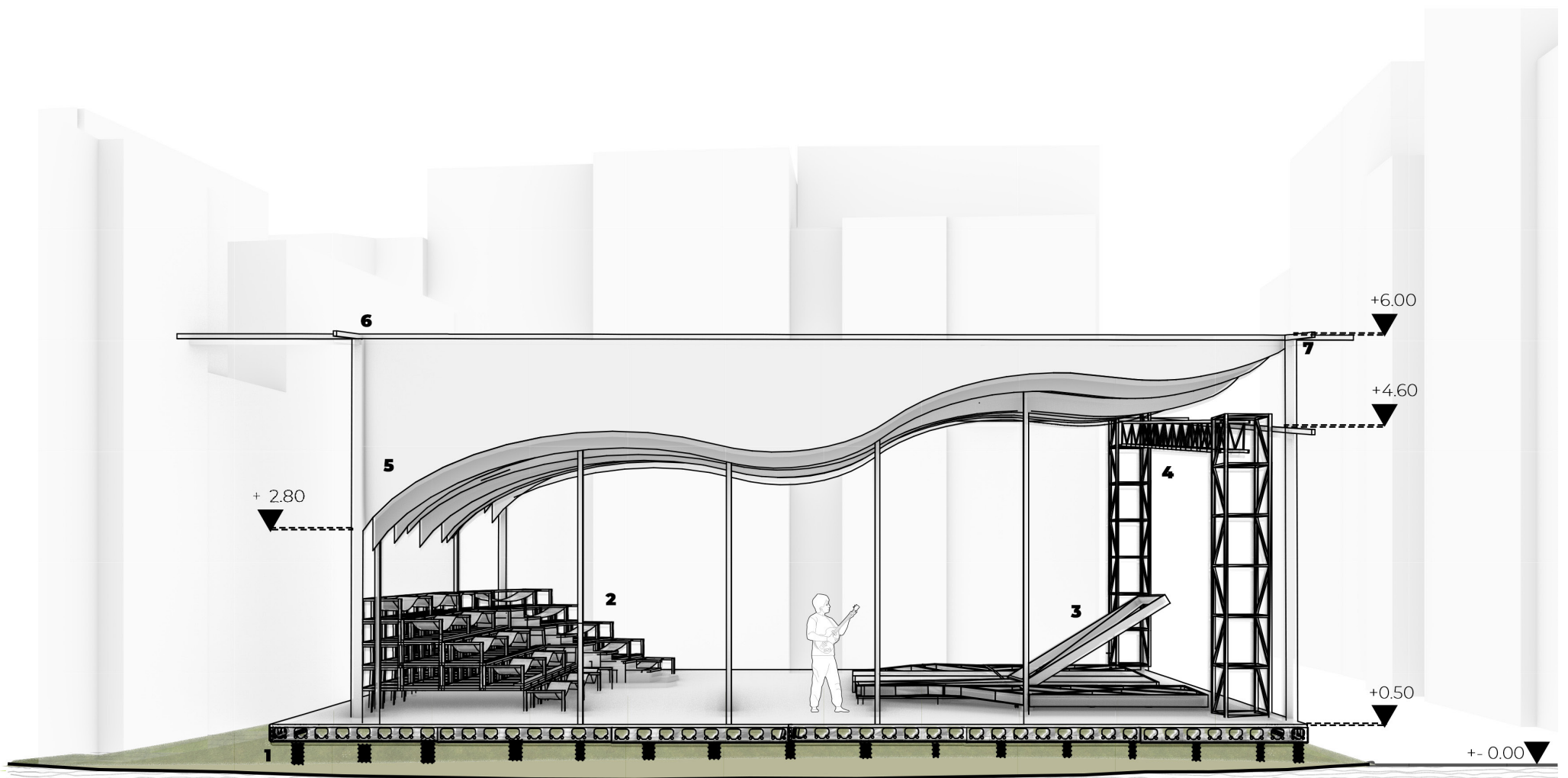
SCATTERED STAGE
A
Midsummer
Night's
Dream
SATURDAY JUNE 8
19:00
SATURDAY
JUNE 9

1st stage with
walls, built by
stage with

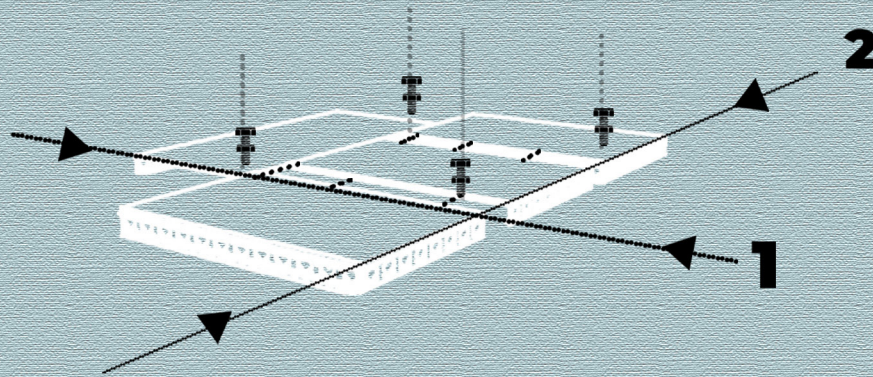
Scattered
stage
prop

HUB A





- 1- Timber underframe with leveling supports
- 2- Modular auditorium seating
- 3- Modular performance platform
- 4- Modular box units for Light Rig
- 5- Fabric roof covering



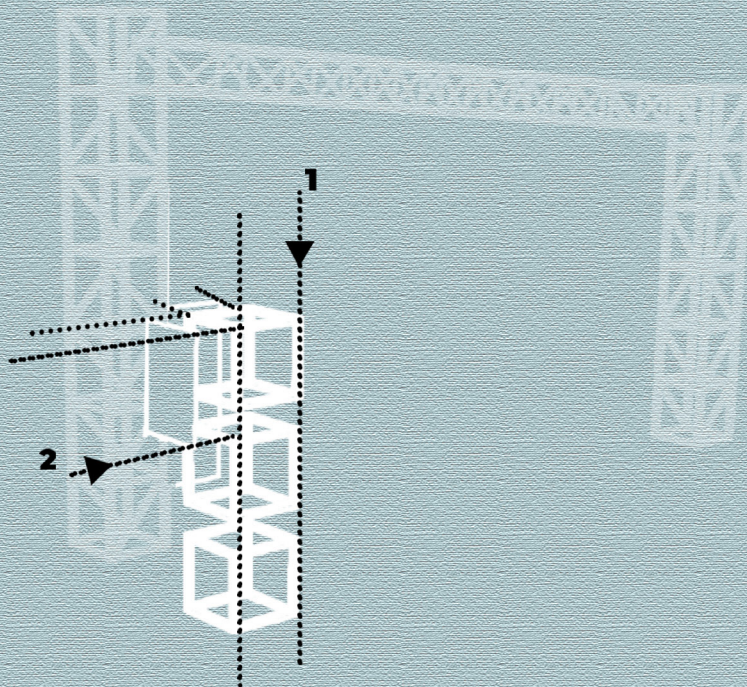
Assembly Time: 10-15 minutes

A- Platform Assembly

1- Plywood panels are placed over timber joists.

2- Panels are fixed with corner brackets and wood screws.

Leveling supports underneath are adjusted to match site slope.



Assembly Time: 20-30 minutes

B-Steel Truss Setup

1- Truss modules are snapped together with tube-in-tube locking joints.

2- Vertical connections secured with steel pins and quick clamps.

No crane required—2 people can assemble manually.

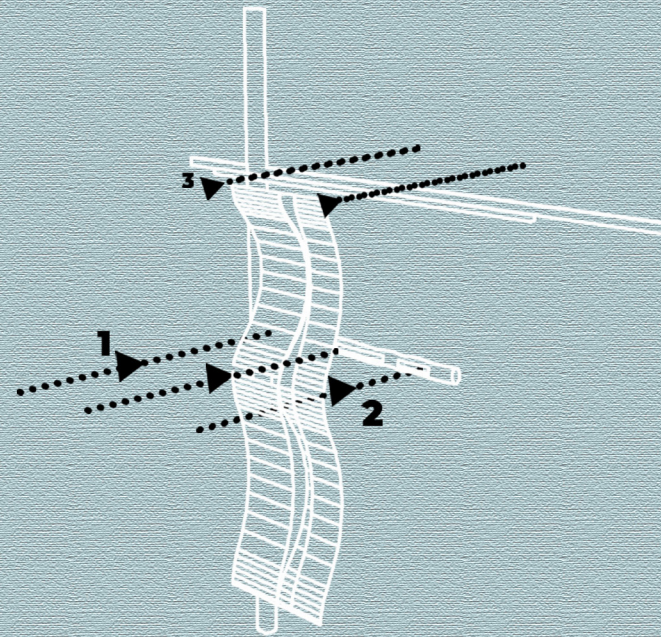
Assembly Time: 5-10 minutes

C – Textile Cover Fixing

1-Natural canvas fabric is tensioned using side ropes.

2- Fastened to timber posts with hooks or loops.

3-Weather-adaptive form reacts to wind/sun.



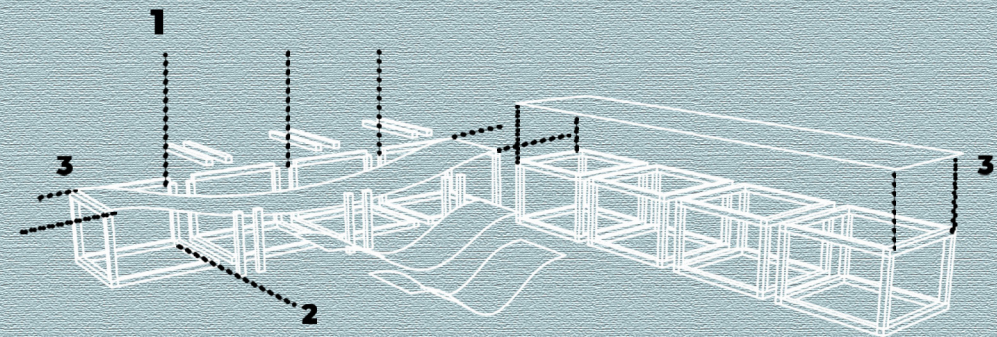
Assembly Time: 20-30 minutes

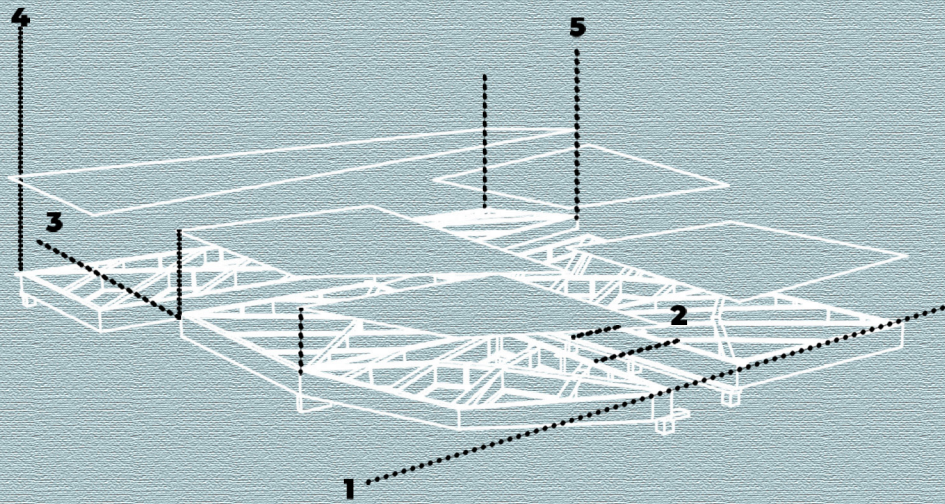
D – Modular Seating Base

1-Cubic timber modules arranged in grid.

2-Fixed with screws and alignment brackets.

3-Plywood seating tops slotted and screwed on.





Assembly Time: 15-20 minutes

ε – Stage Platform Frame

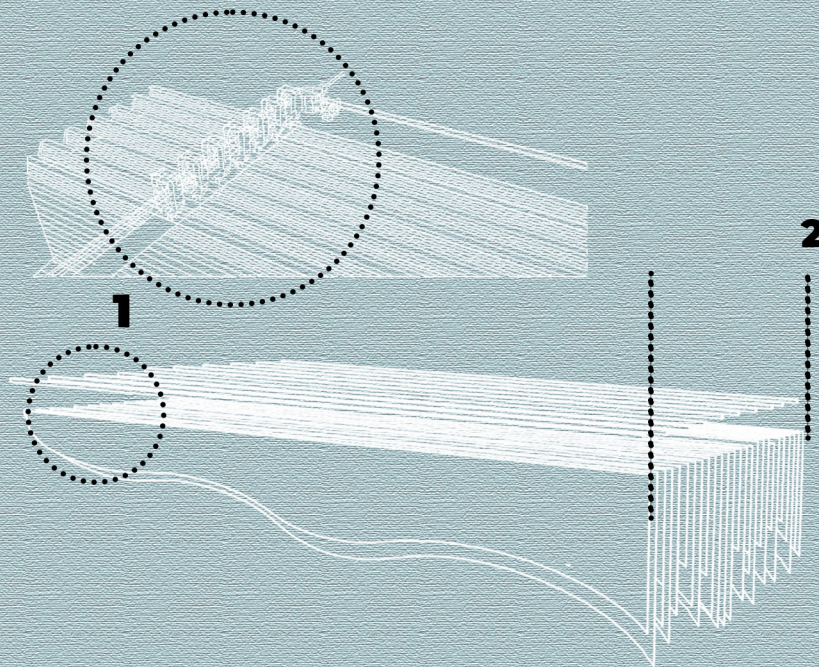
1-Support grid assembled on ground with dowel and screw joints.

2-Stage panels attached on top.

3- Adjustable feet used to ensure level finish.

4-Additional triangular bracing under corners.

5- Side fascia boards optional for neat edge finish.



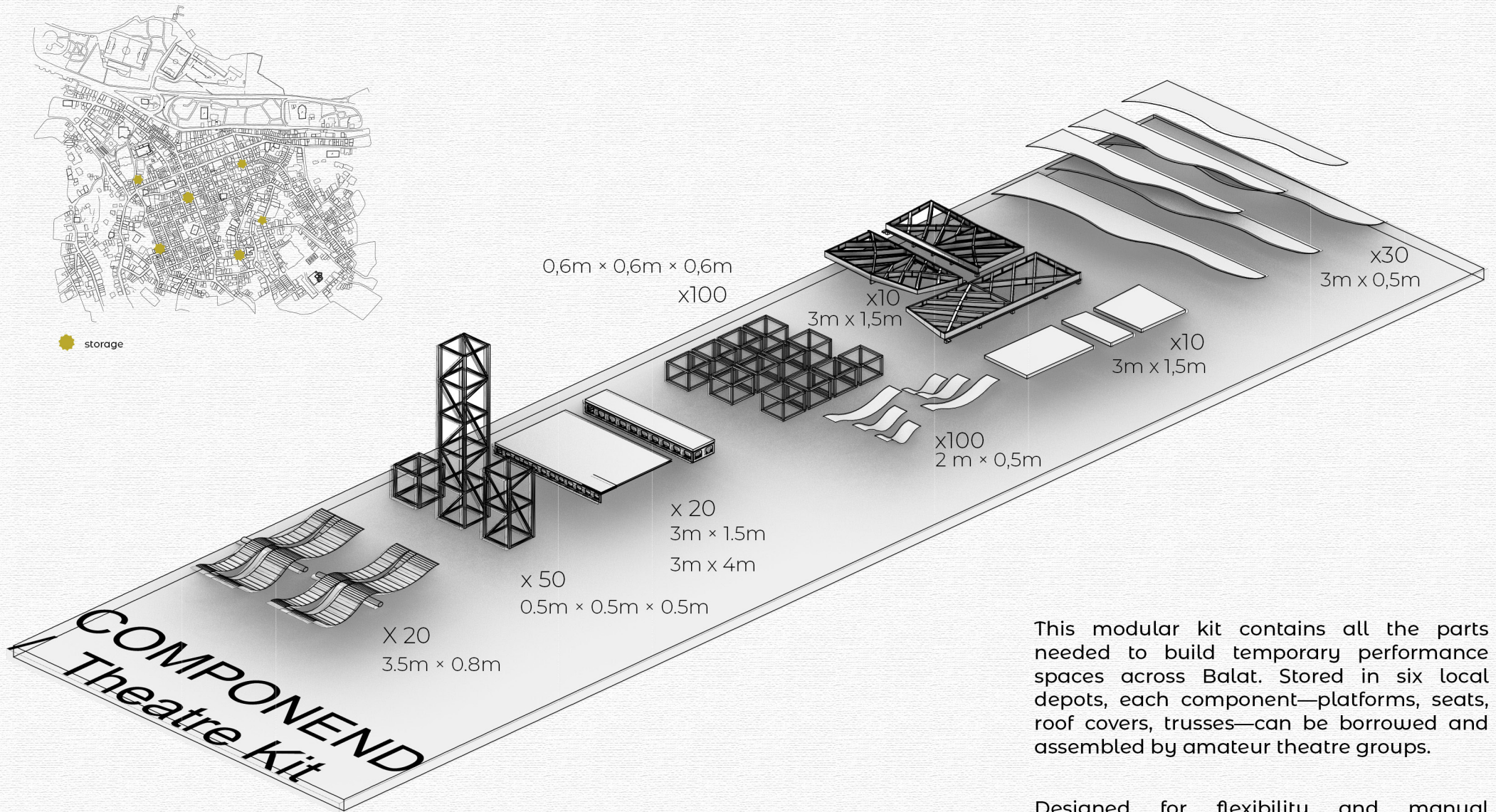
Assembly Time: 15-20 minutes

ε – fabric Rood module

1- Timber slats aligned and connected via lightweight metal bars.

2-Central support spine holds grid curvature.

Can be dismantled and transported flat-packed.



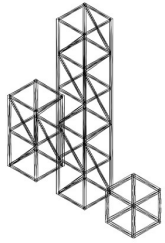
This modular kit contains all the parts needed to build temporary performance spaces across Balat. Stored in six local depots, each component—platforms, seats, roof covers, trusses—can be borrowed and assembled by amateur theatre groups.

Designed for flexibility and manual assembly, the system allows each hub to adapt its space for staging, rehearsal, or community gatherings. Architecture here becomes a shared toolkit—lightweight, mobile, and rooted in collaboration.

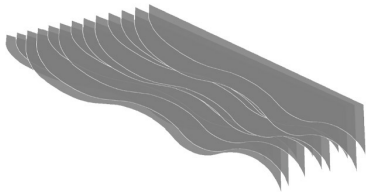
Component Theatre Kit – A Mobile System for Collective Performance

Theatre Kit Hub A

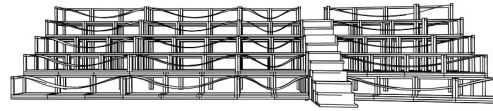
stage



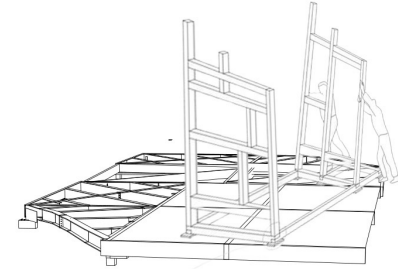
Steel modular units with adjustable soffit height



Fabric roof covering



Modular auditorium seating

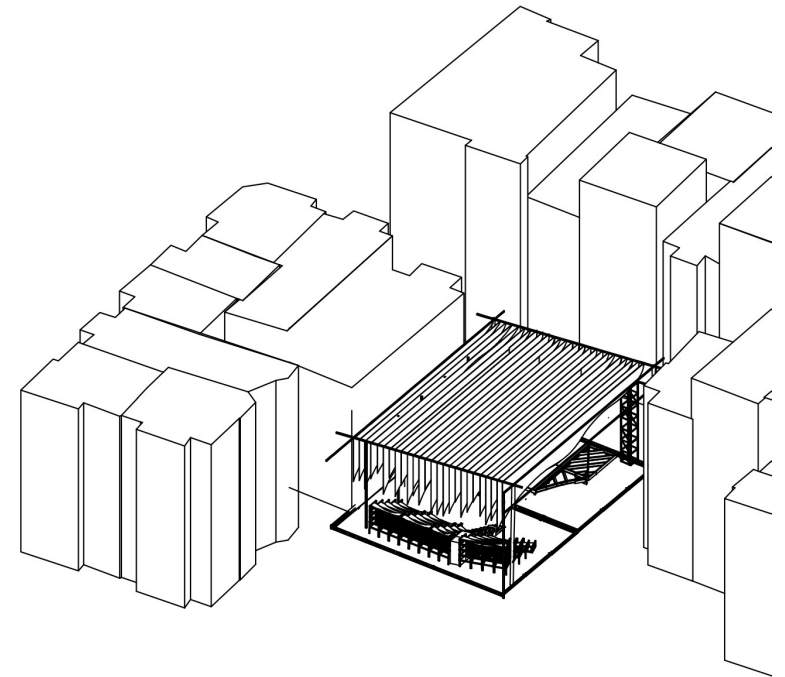


Foldable and height-adjustable modular performance platform

Structural element



Static main wooden framework



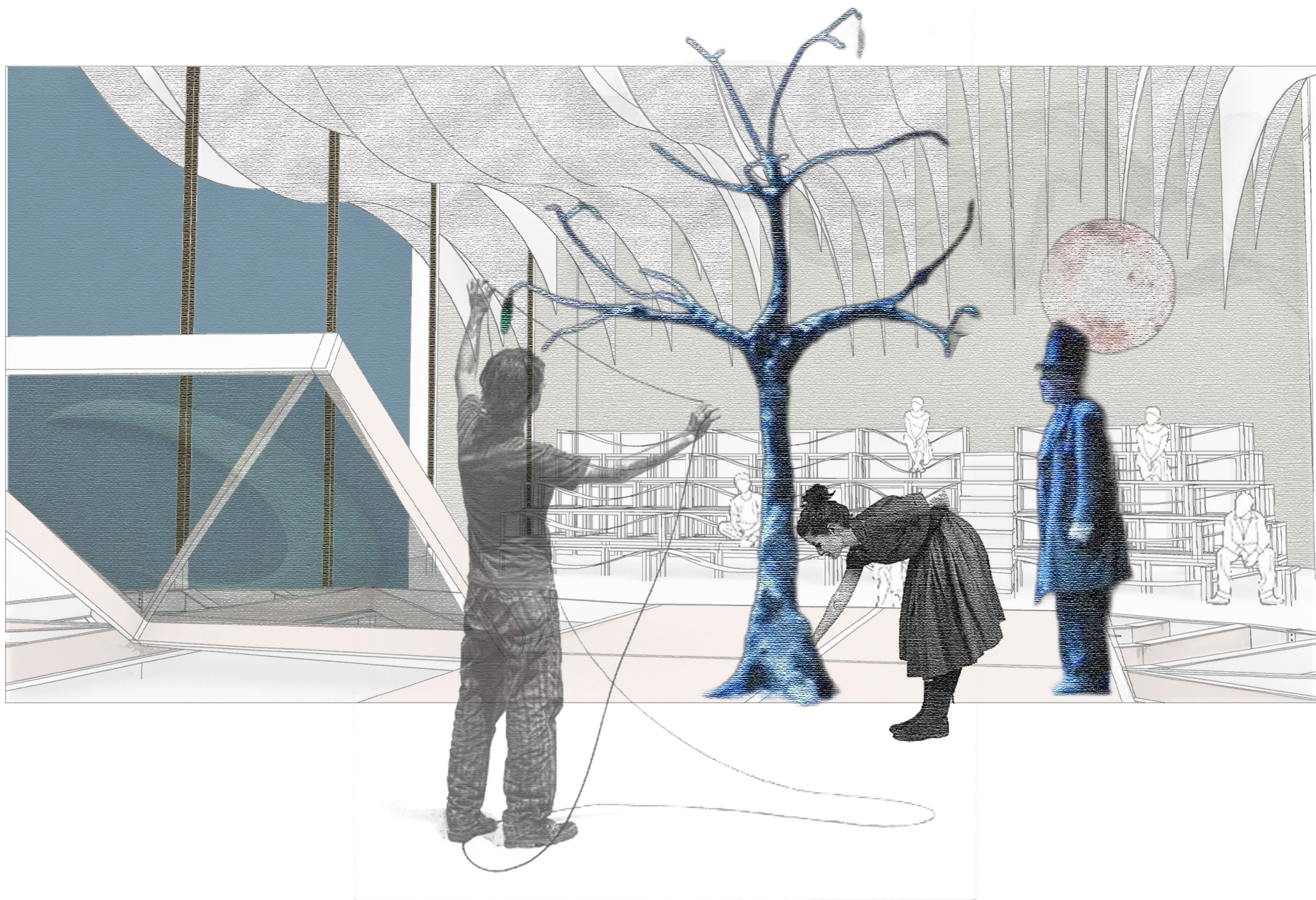


Image from stage

Four Scenes, One Stage

Collaborative Build: Amateur performers actively participate in the construction process.

Modular System: Lightweight modules allow tool-free installation and reconfiguration.

Community-Based Setup: No professionals needed—setup driven by users themselves.

1st Scene: Assembly Process



Inflatable Thermal Canopy: PTFE-coated fiberglass traps warm air inside.

Wood Stove Integration: A stove provides warmth for audience and performers.

Compact Assembly: Stage and audience seating stay close for heat efficiency.

3rd Scene: Winter Performance Setup



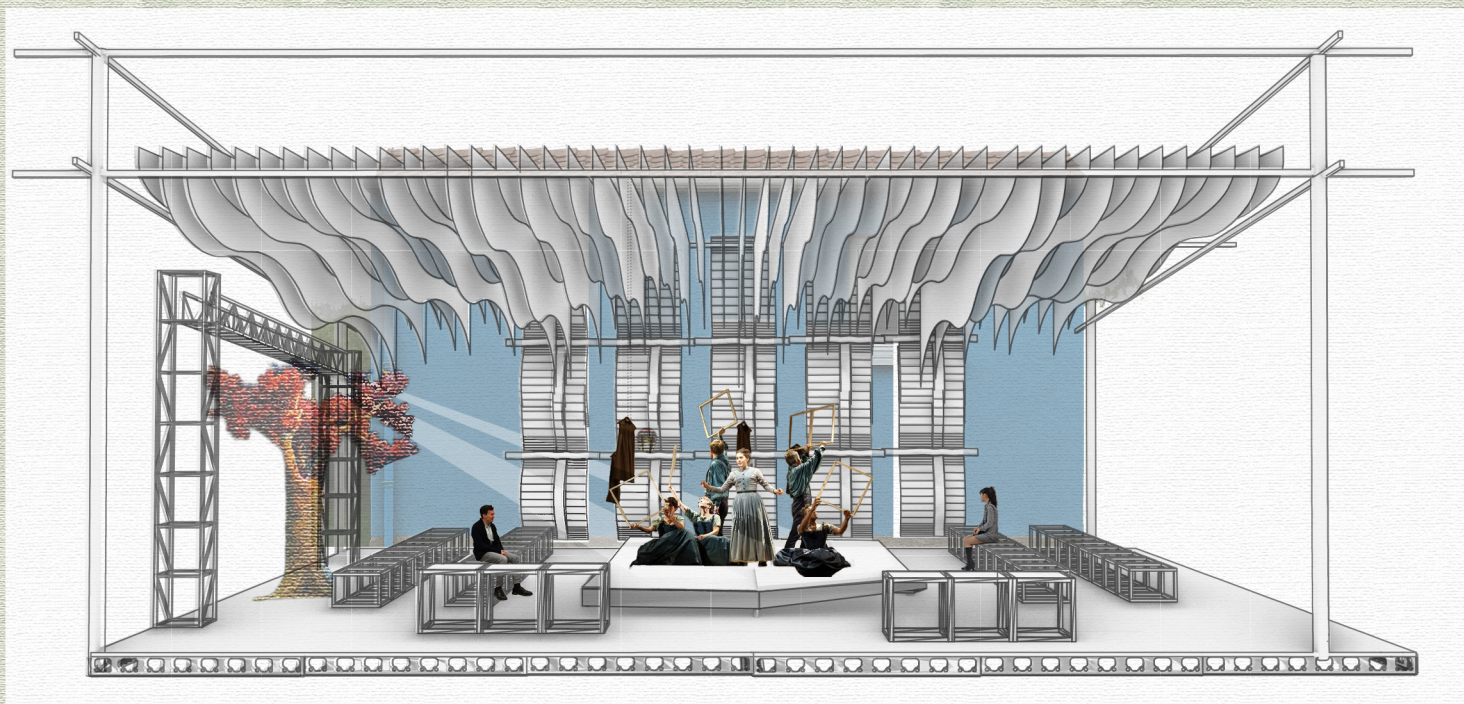


Open Canopy Shell: Breathable textile provides shade and spatial definition.

Ground-Level Audience: Viewers sit on mats and cushions, close to performers.

Minimal Set Design: Portable elements adapt to the play's narrative.

2nd Scene: Summer Performance of A Midsummer Night's Dream

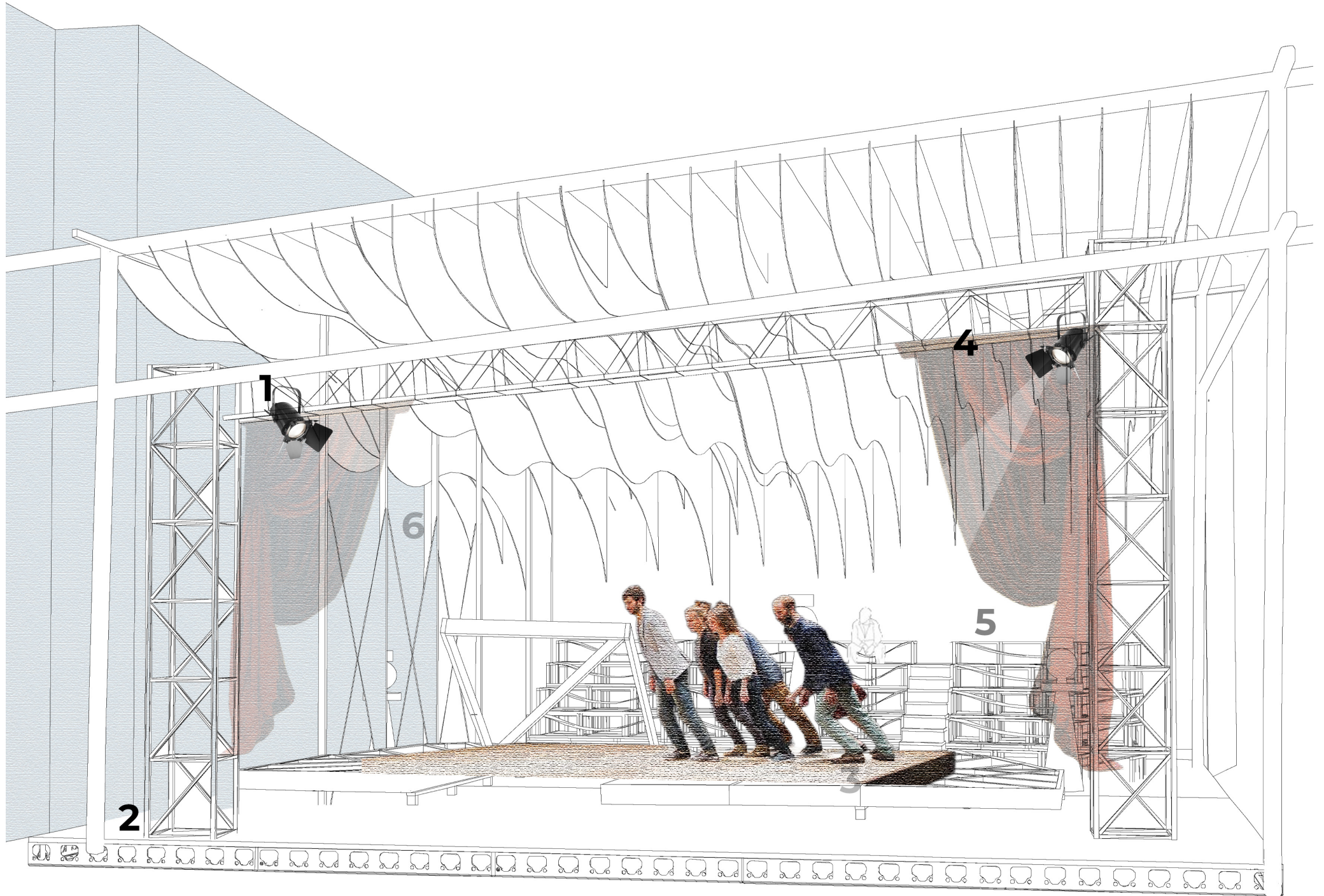


Reconfigured Modules: Seating and backdrop shifted to accommodate new staging.

Layered Ceiling Panels: Adds acoustic and spatial depth to the performance.

Adaptable Set: Same modular units form different atmospheres for each play.

4th Scene: Performance of Antigone



1 — Lighting Unit

Top-mounted stage spotlight attached to the steel truss, used for frontal lighting of performances.

2 — Modular Steel Truss Column

Vertical support made of modular steel elements. Carries the load of the roof cover and lighting system.

3 — Stage Surface (Modular Platform Panel)

Removable and adjustable wooden stage platform, allowing various spatial setups.

4 — Side Curtain Rail & Fabric

Mounted on a cable track or frame to allow manual repositioning. Provides both shading and theatrical effect.

5 — Modular Audience Seating (Tribune)

Stackable modular seating blocks for audience arrangement, adaptable in number and layout.

6 — Backstage Curtain (Backstage Area)

The rear enclosed area used as a temporary backstage or dressing zone, hidden from audience view.

Street Donation Point - Storyboard



The platform is placed at selected street corners in Balat. It stands ready for use, awaiting any announcements or donations.



An amateur performer adds a show poster and a material list to the board.

Locals can now see the title of the play, performance date, and what items are needed for costumes, props, or decor.

The locals read these announcements while passing by, so they now know exactly what they can donate.



The poster includes the play's title, time, and date, along with a list of items needed for costumes or set design. It is designed to be clear and engaging for everyday passersby.



A local resident sees the announcement and donates unused items like fabric, props, or materials. The platform becomes a point of spontaneous, everyday engagement.



As the performance day approaches, the amateur theatre group collects the donated items. These are creatively reused as part of the costumes and stage elements.

Purple Theatre Scattered Stage Model: A Scaled Representation of Hub A





Scattered Stage ID Card: A Symbol of Decentralised Belonging

In the decentralised theatre network of Scattered Stage, each performer carries a personal ID card—not just for access, but as a symbol of participation, movement, and collective ownership. These cards grant amateur theatre groups the ability to activate different hubs across Balat: from stage spaces to costume workshops and discussion forums.

The cards are both practical and poetic: they register users within the system, allow access to storage points, and create a visible thread of belonging in a city fragmented by private boundaries. In this way, the ID card becomes a small but powerful artefact—linking bodies, stories, and spaces in a fluid cultural network.

THANK YOU!