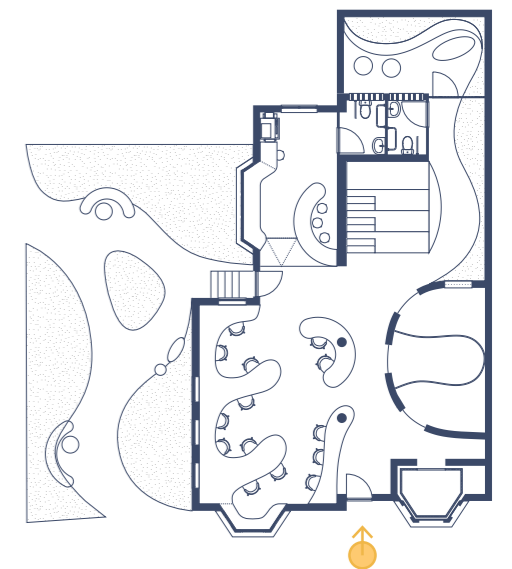






Entering the interior from the front of the Safe House.





Upon entering the ground floor, you'll see the Shared Table area, featuring large windows where you can work by the window while enjoying views of the garden greenery outside. Further inside is the activity and relaxation space.







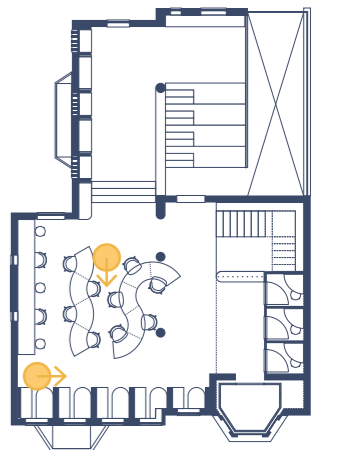
Moving from the medium focus zone downstairs to the high focus zone upstairs, you pass through a greenery-filled atrium. This area serves multiple functions—not only as a staircase but also as a space where people can sit, work, or socialize freely. As you continue upward, the atmosphere gradually becomes quieter.







Upstairs is a very quiet space, ideal for highly focused work, with a variety of work settings to choose from. The most distinctive feature is the arched window, equipped with shutters that allow users to control the light and shadow as needed.





When you're tired from work, you can step outside to breathe in the fresh air. There are also tables and chairs outdoors, allowing you to relax and refresh surrounded by greenery.

