

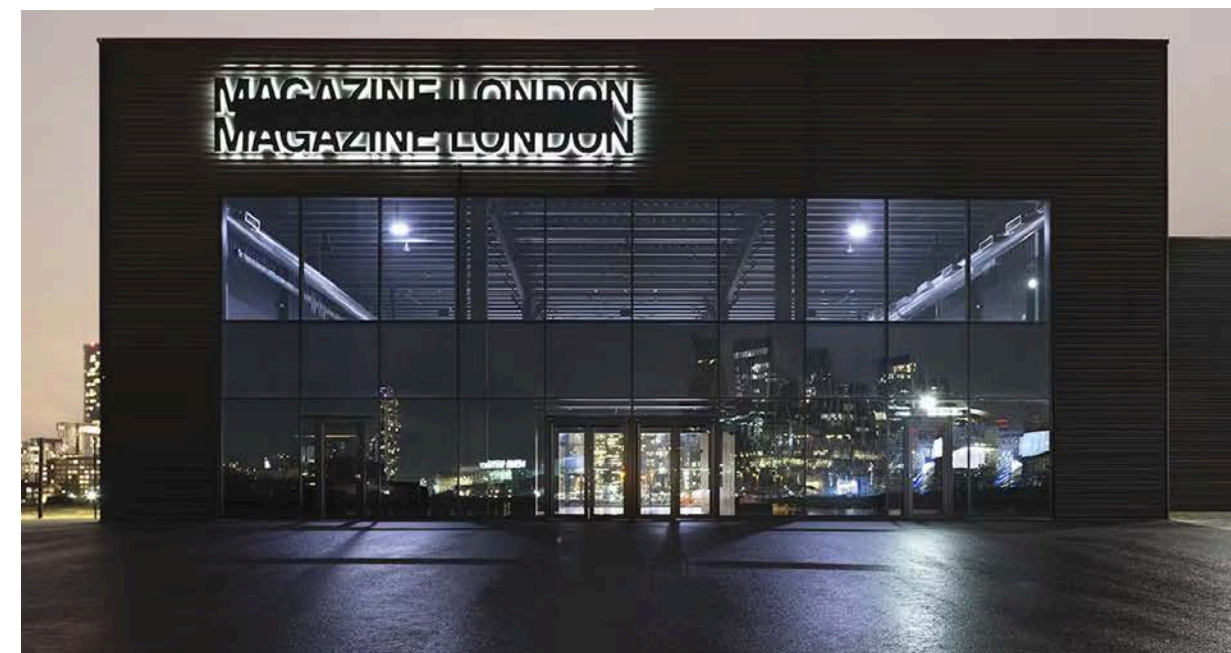
DESIGN DEVELOPMENT

Digital Sketchbook

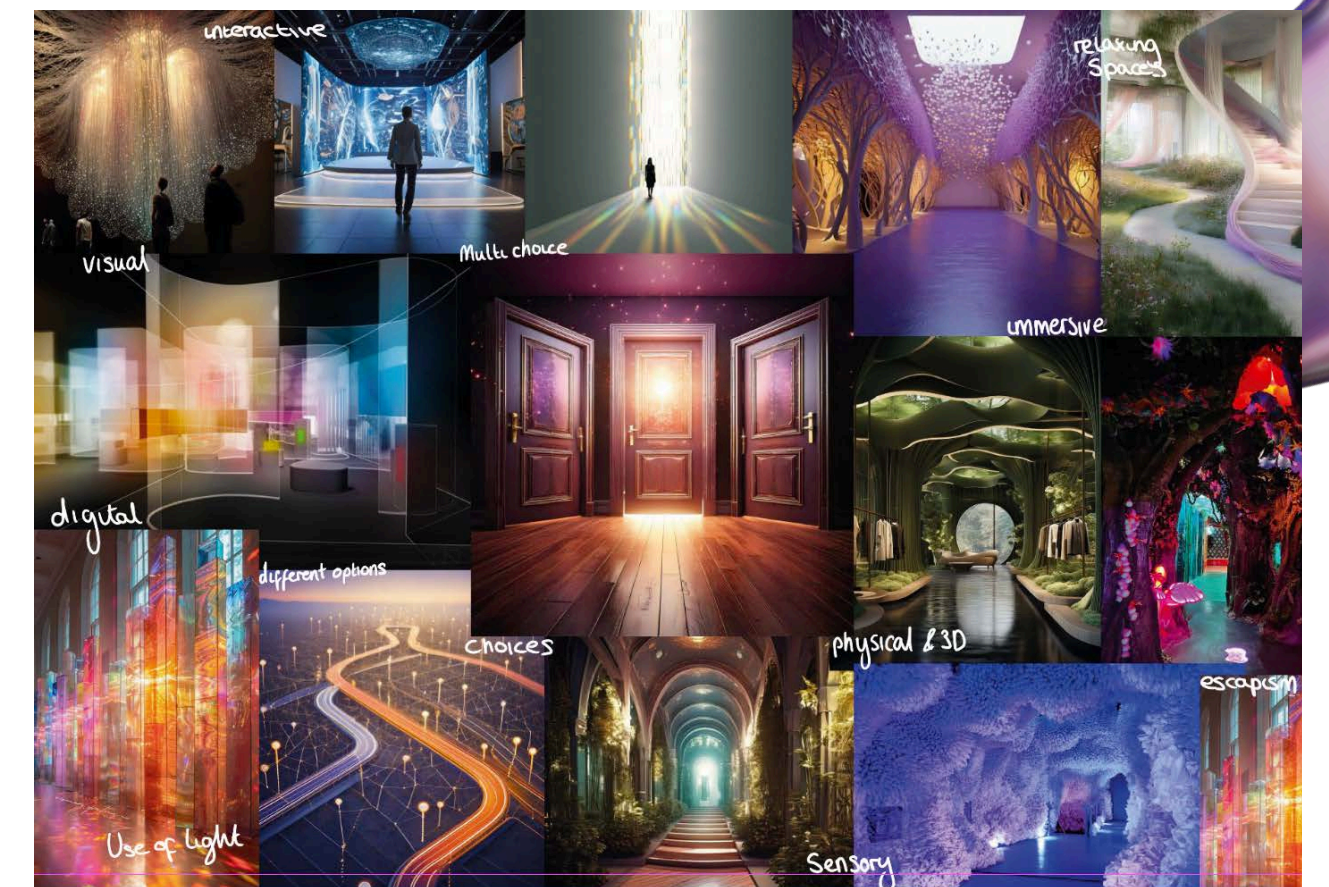


Richard Quinn's House of Sensory Escape focuses on creating physical immersive escapes. Overall it showcases Richard Quinn and his flexibility and originality as a designer through a variety of original spaces.

Location :
Magazine London



Initial Moodboard



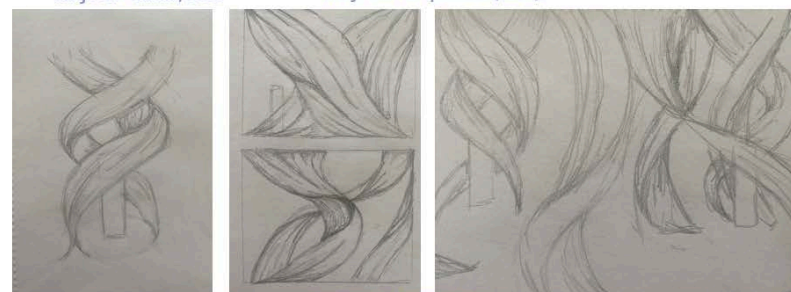
Design Development Example Pages

Sink Into Design -Development

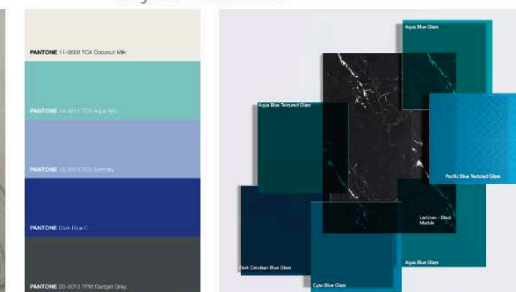
Inspiration



Sketch Up Progress



Sketchbook Development



Colour & Materials

Development- Centre installation

Artist Inspiration:
Maggie West



Old - New



Colour Pallets

Initial Sketch



Updated Colours

SketchUp Development



Materials

Chosen Brand: Richard Quinn

A London based designer, known for his statement gowns and dramatic shows.

Richard Quinn SS24 LFW



Previous Collections



ACCESSIBILITY & SENSORY PATHWAYS

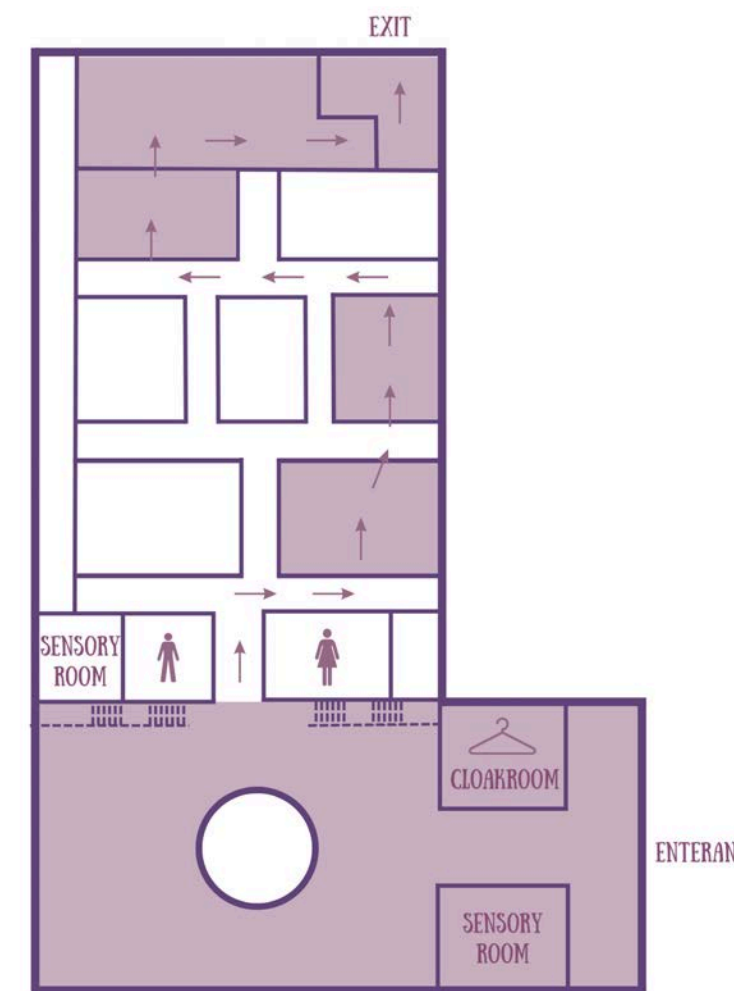
RICHARD QUINN'S HOUSE OF
**Sensory
 Escape**
 EXPERIENCE INFORMATION & ACCESSIBILITY

A multi-sensory immersive experience but with built in sensory pathways for control of your own sensory experience, a flexible experience for a variety of sensory needs and wants.

Full experience information and accessibility guide:



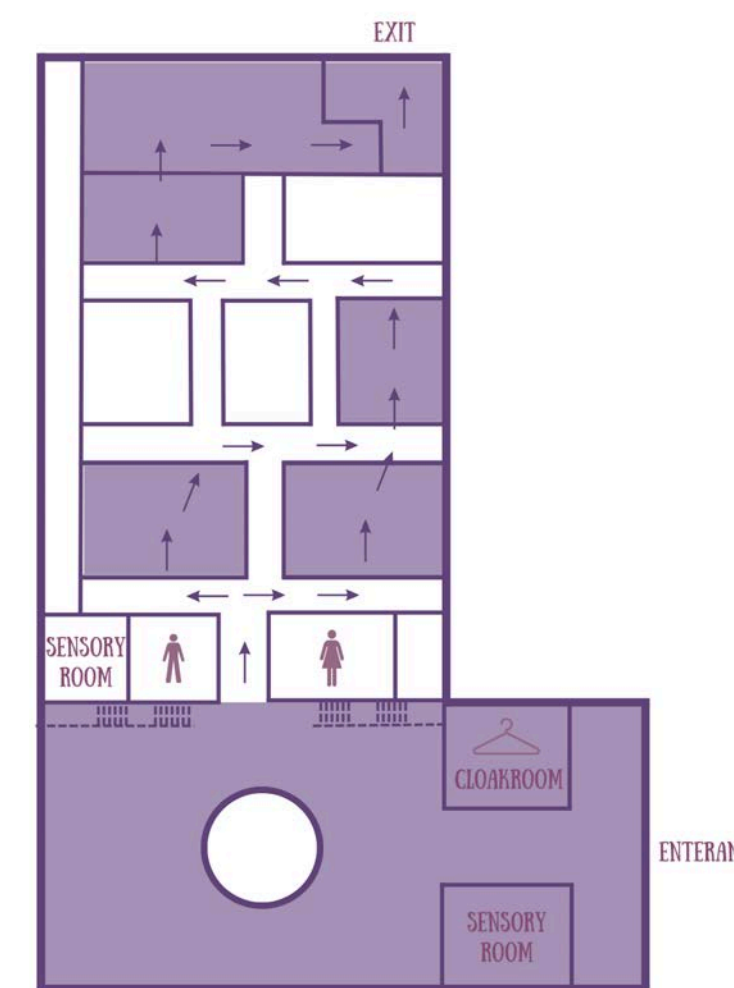
Accessibility Guide



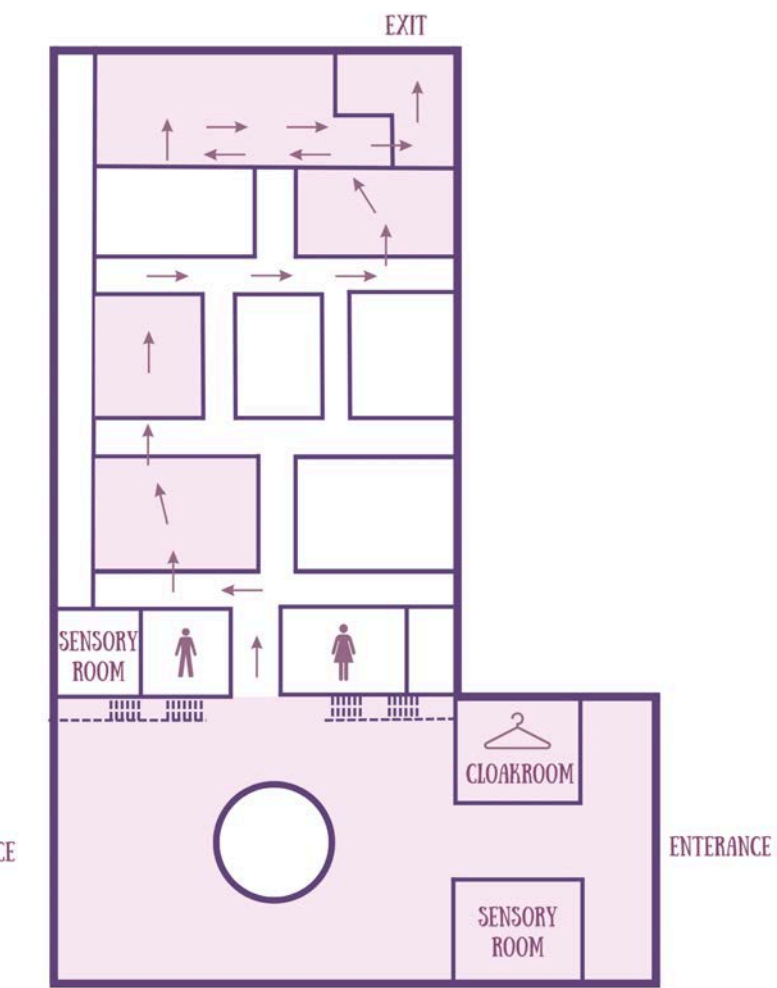
Relax Pathway



Visual Pathway

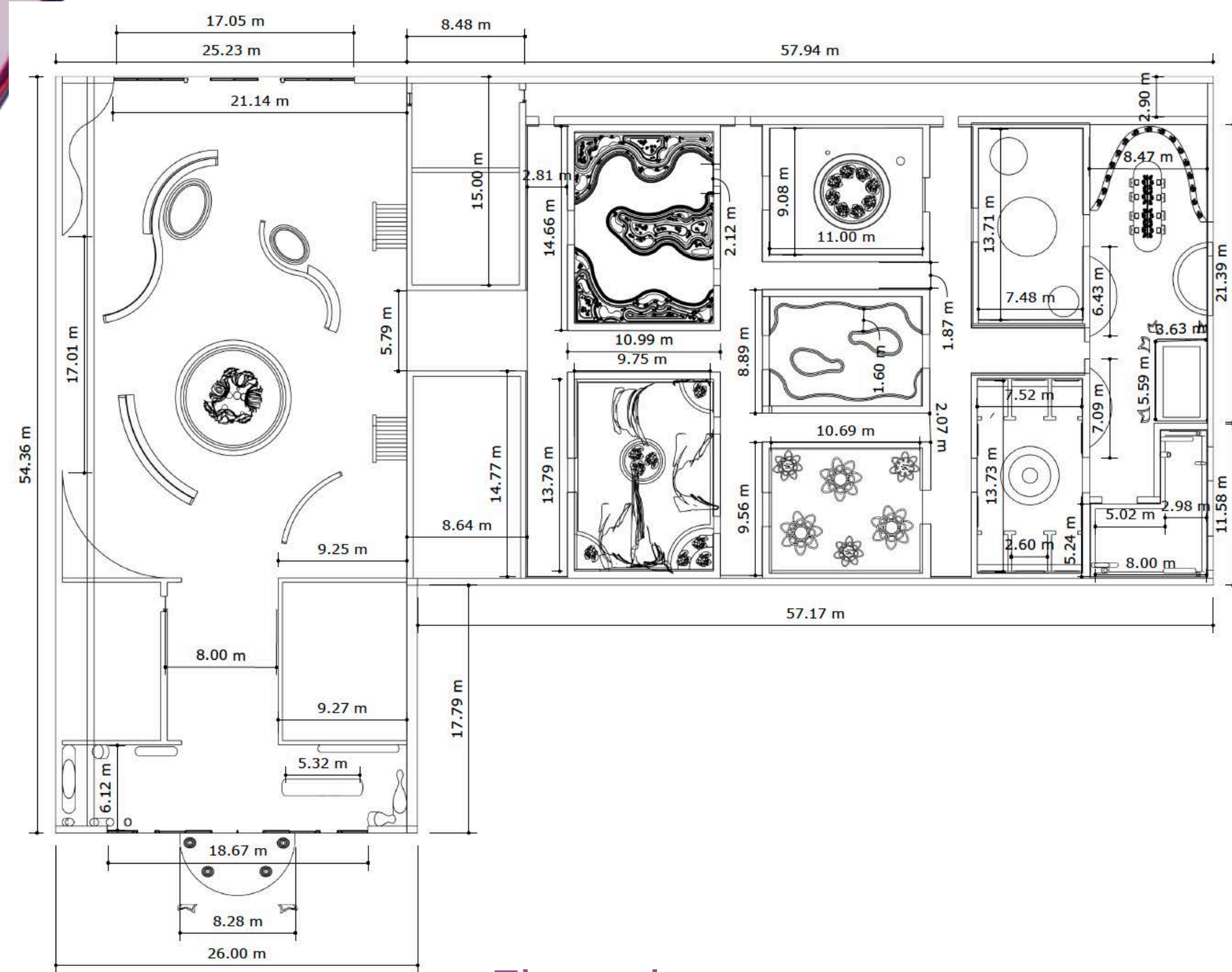


Sensory Seeking Pathway



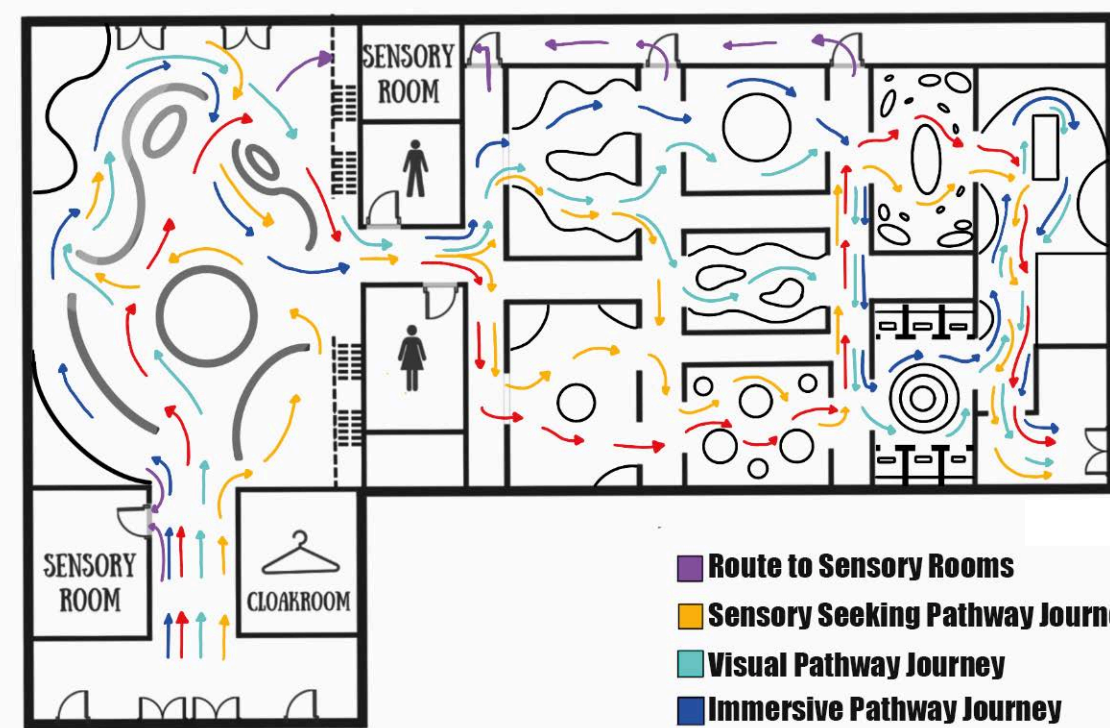
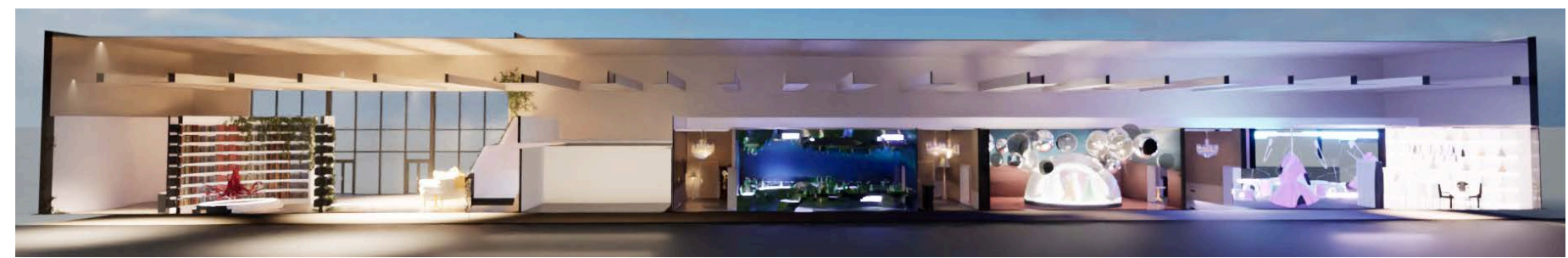
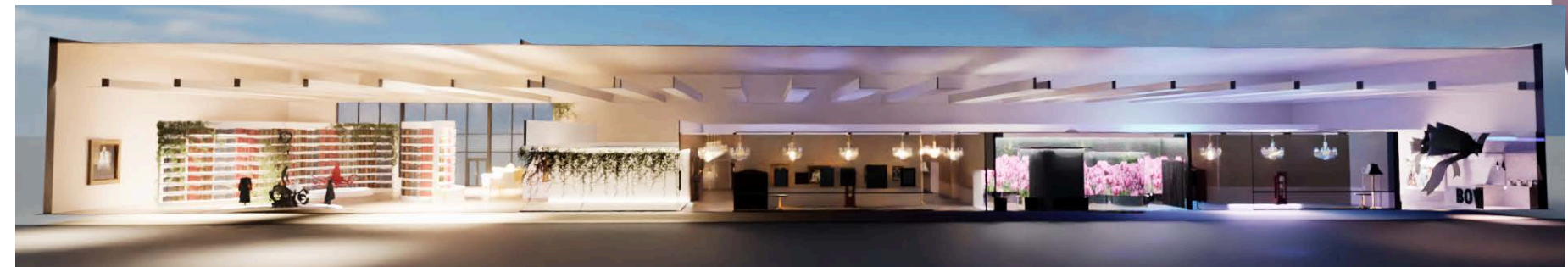
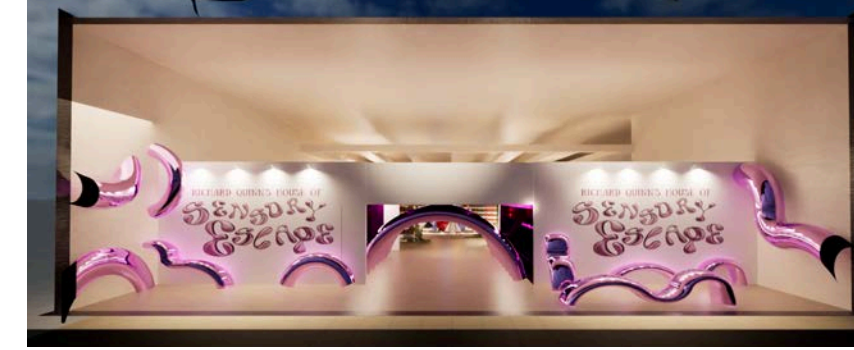
Immersive Pathway

SPATIAL PLANNING

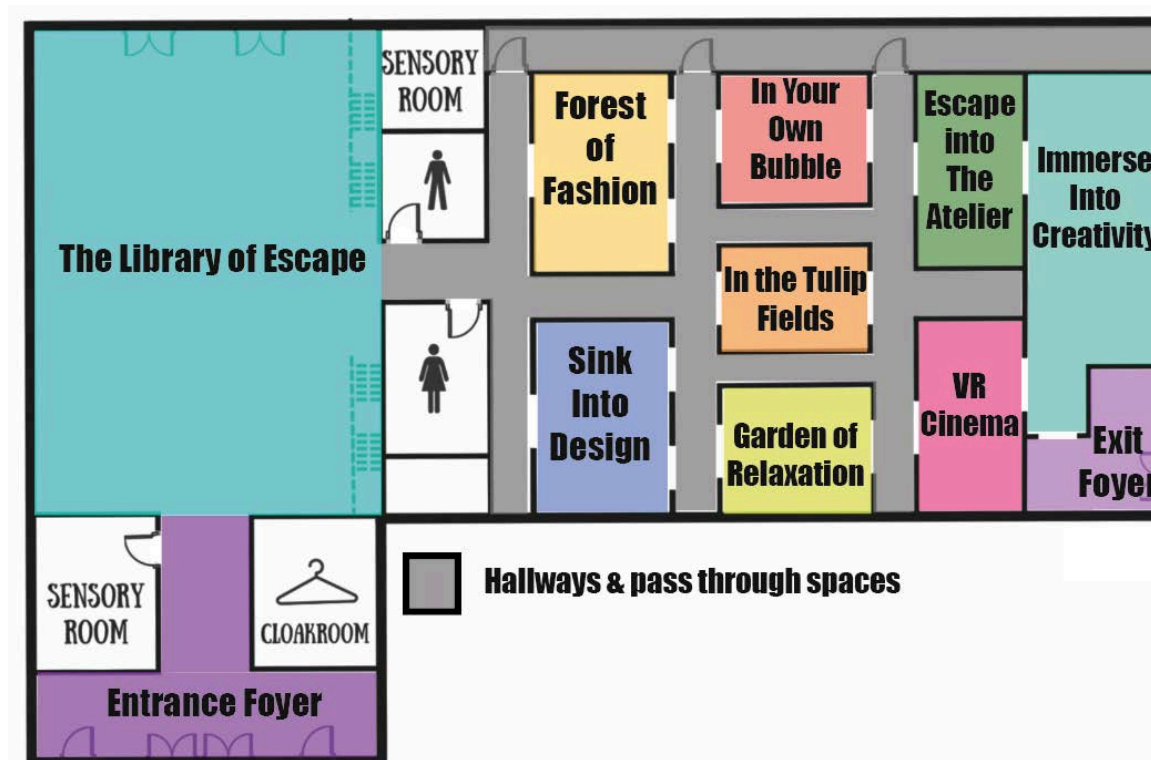


Floorplan

Side Elevations



Customer Journey



Zoning



Top View of Space

FINAL OUTCOME

Richard Quinns House of Sensory Escape is a house where everything is not quite as it seems. The initial experience involves house elements with a surrealist twist including hallways and a library. The exterior design was also inspired by house architecture but with a Richard Quinn element of maximalism added.



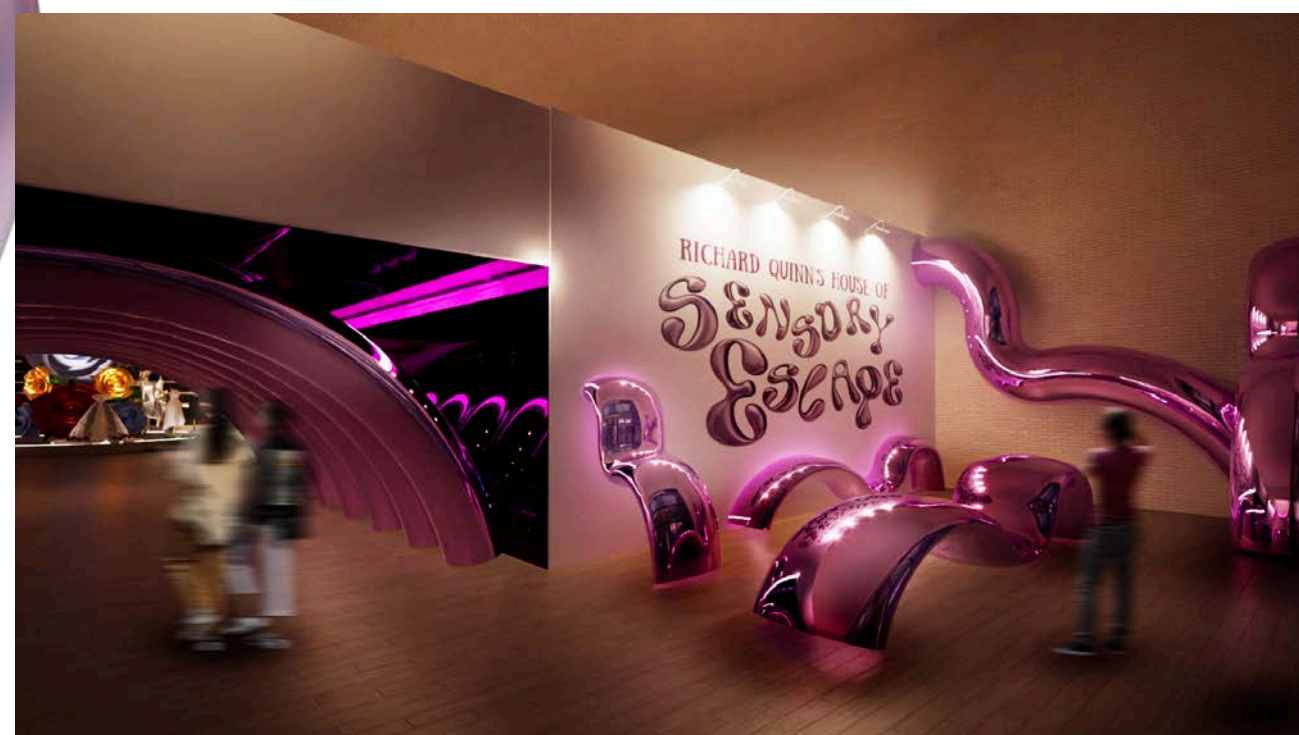
Walkthrough Video



Exterior



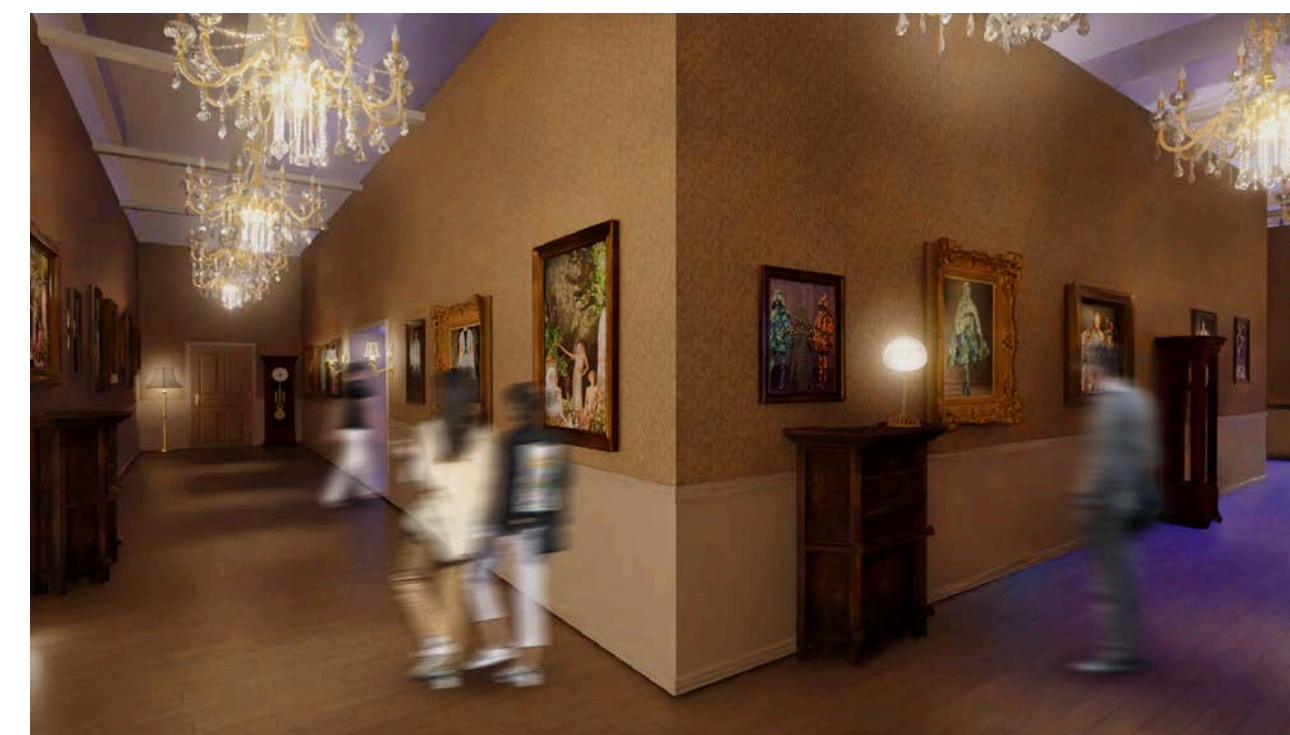
Space Locations



Entrance



The Library of Escape



Hallways

FINAL OUTCOME- ROOMS OF ESCAPE

Each Room of Escape immerses attendees in a different fashion inspired Richard Quinn alternate reality, testing the boundaries of reality and what is possible and normal.



The Forest of Fashion



Sink into Design



In Your Own Bubble



The Tulip Fields



The Lake of Relaxation



The Future of Film



Escape into the Atelier



Immerse in Creativity



Exit

VIRTUAL REALITY

A Richard Quinn world showing how the brand is an escape from daily life and a safe space for people to immerse in the wonders of fashion. Made up of two parts, The City and The Lake of Relaxation this experience showcases the contrast between day to day life and a relaxing environment. This gives literal meaning to Richard Quinn's House of Sensory Escape



The City



The Lake of Relaxation



VR Video

