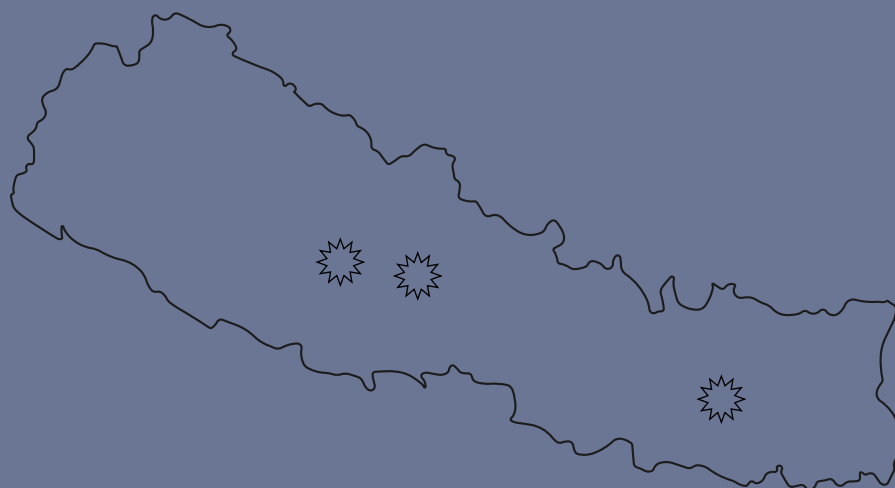


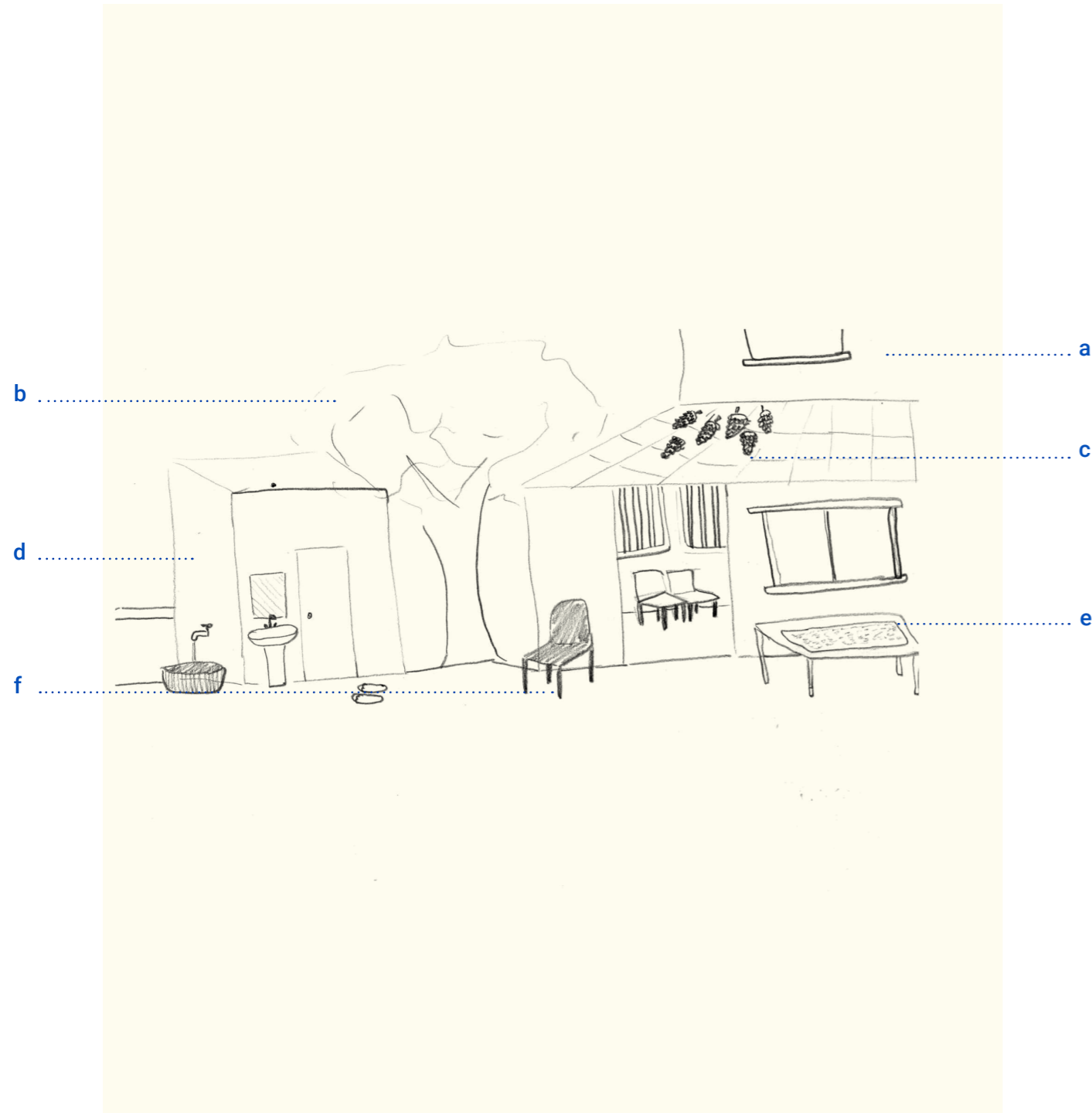
ACTS OF REMEMBRANCE:

# DRAWING



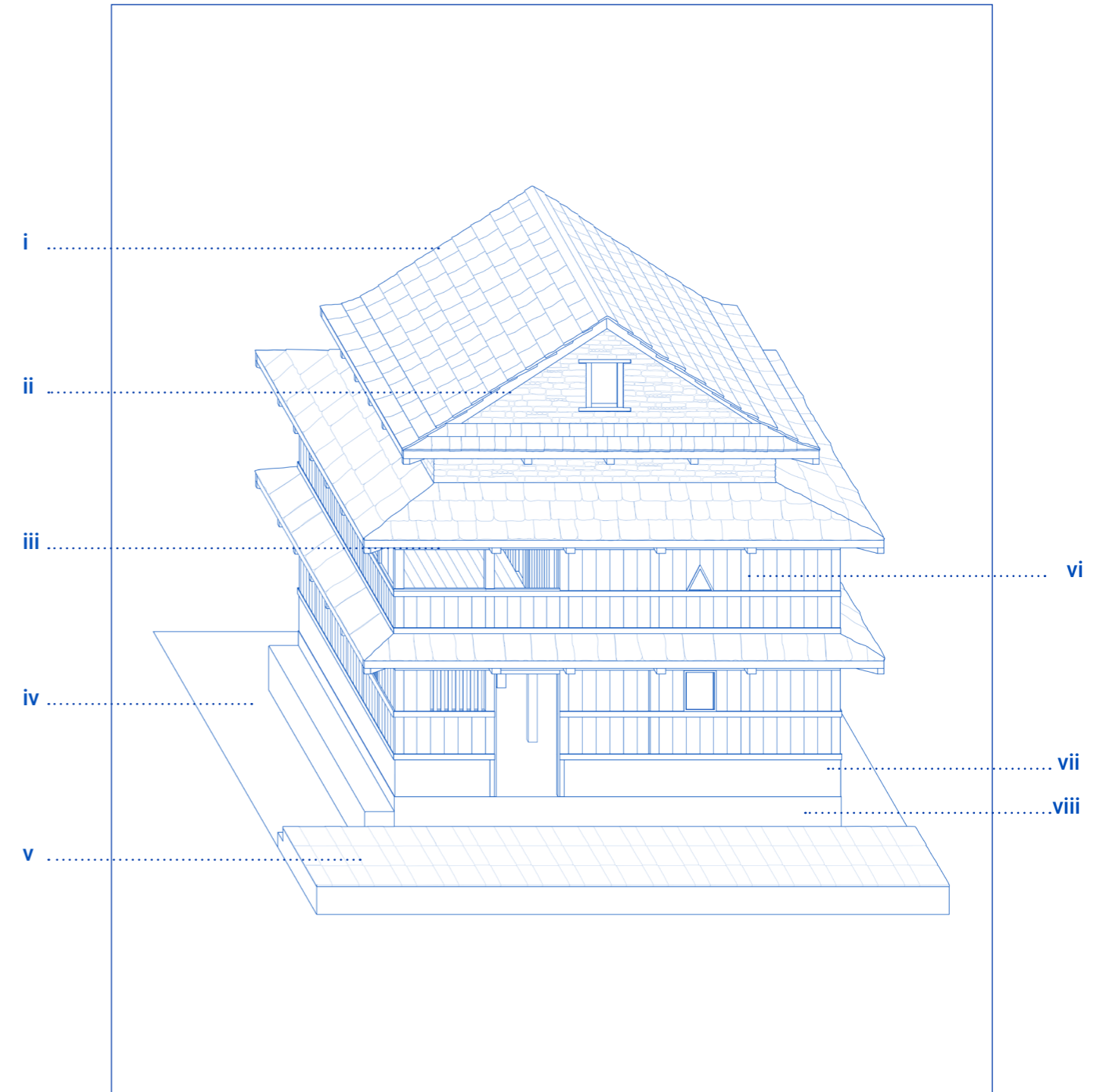
**A Diaspora's Memory Of 'Home'**

A collection of sketches and illustrations



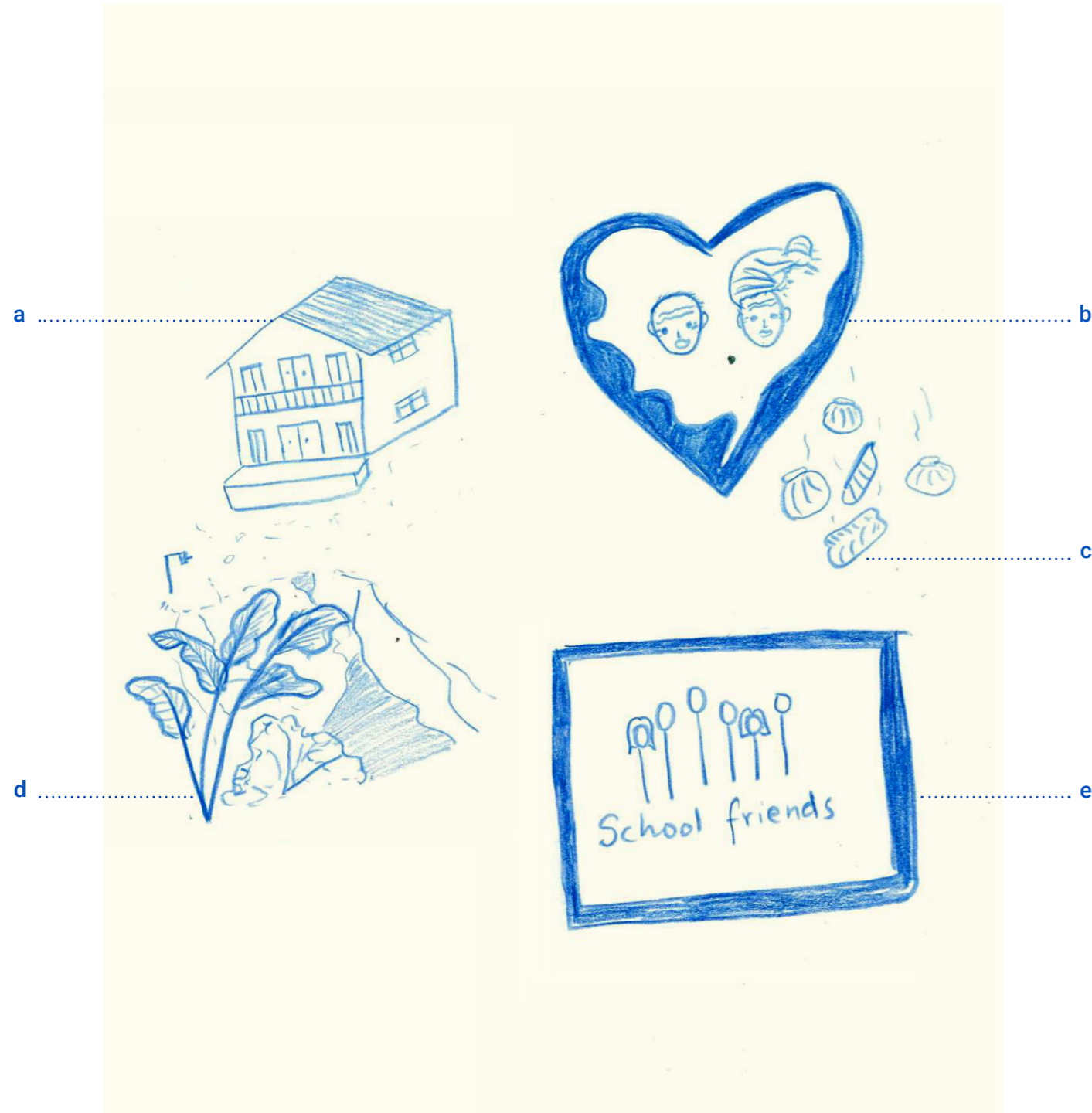
Sketch by Cheli Gharti. Memories of 'home' in Nepal

- a Cheli's family home in Baglung, Nepal
- b Mango tree
- c Corn drying on roof
- d Outdoor toilet and washing area
- e Grains drying on table
- f Her grandmother's chair



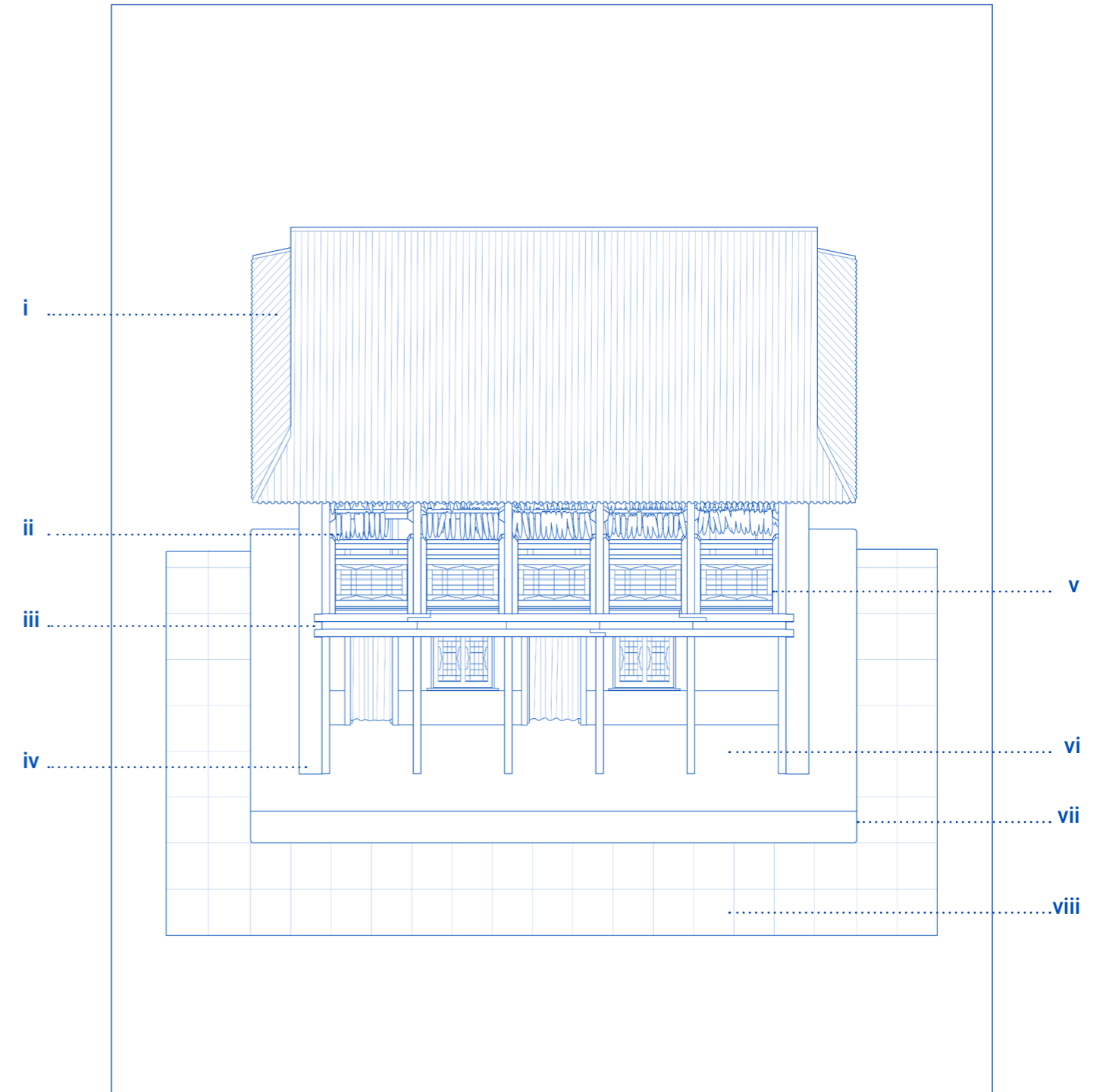
Line illustration. Referenced from photographs.

- i Slate roof
- ii Attic (stone walls)
- iii Balcony
- iv Vegetable patch
- v Agan (social space)
- vi Timber structure and facade
- vii Mud render
- viii Stone and earth raised floor



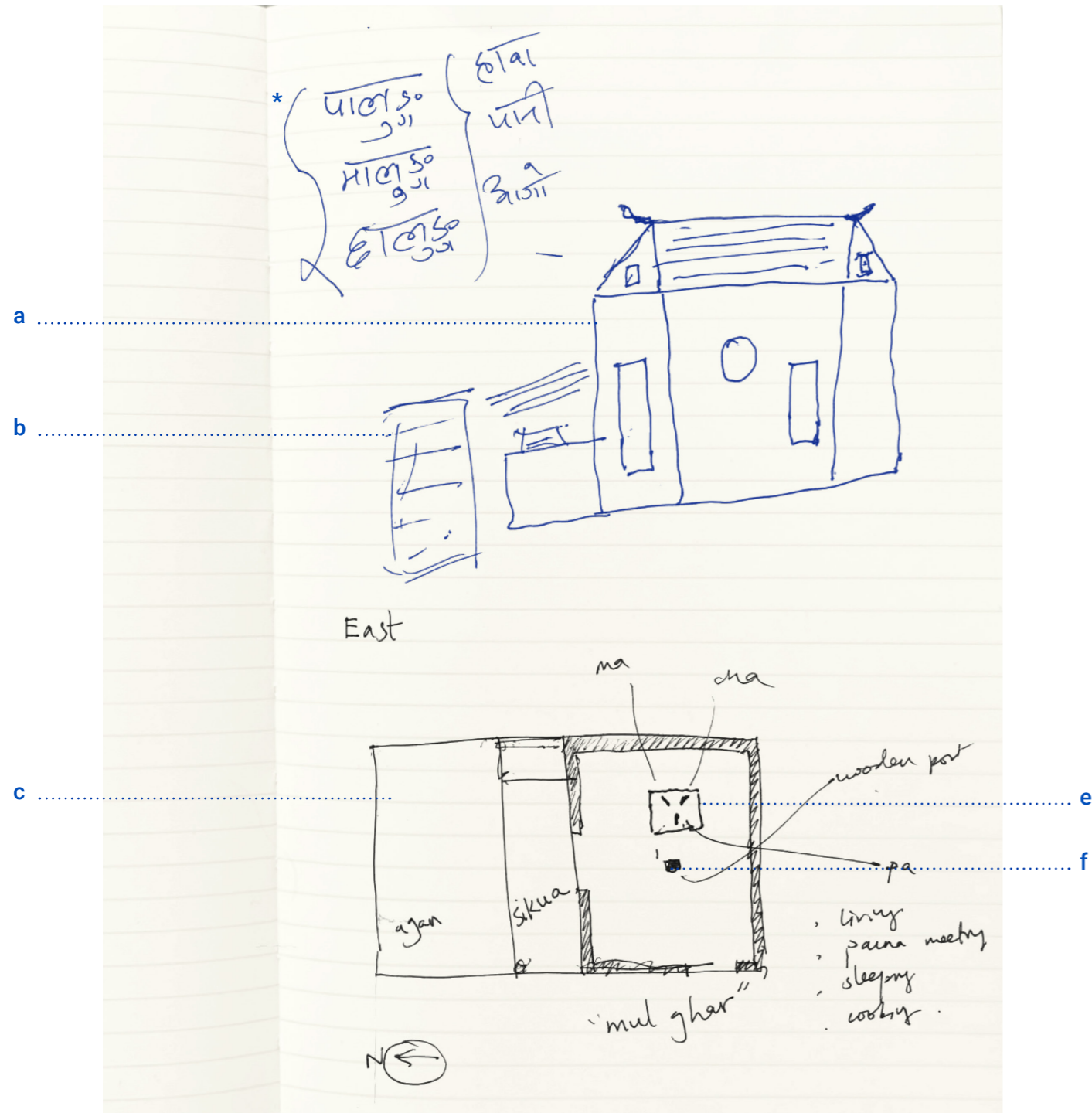
Sketches by Poonam Pun. Memories of 'home' in Nepal

- a Poonam's family home in Gulmi, Nepal
- b Photograph of her grandparents
- c Eating momo, reminder of home
- d Vegetables growing in the garden
- e Childhood memories of friends



Line illustration. Referenced from photographs.

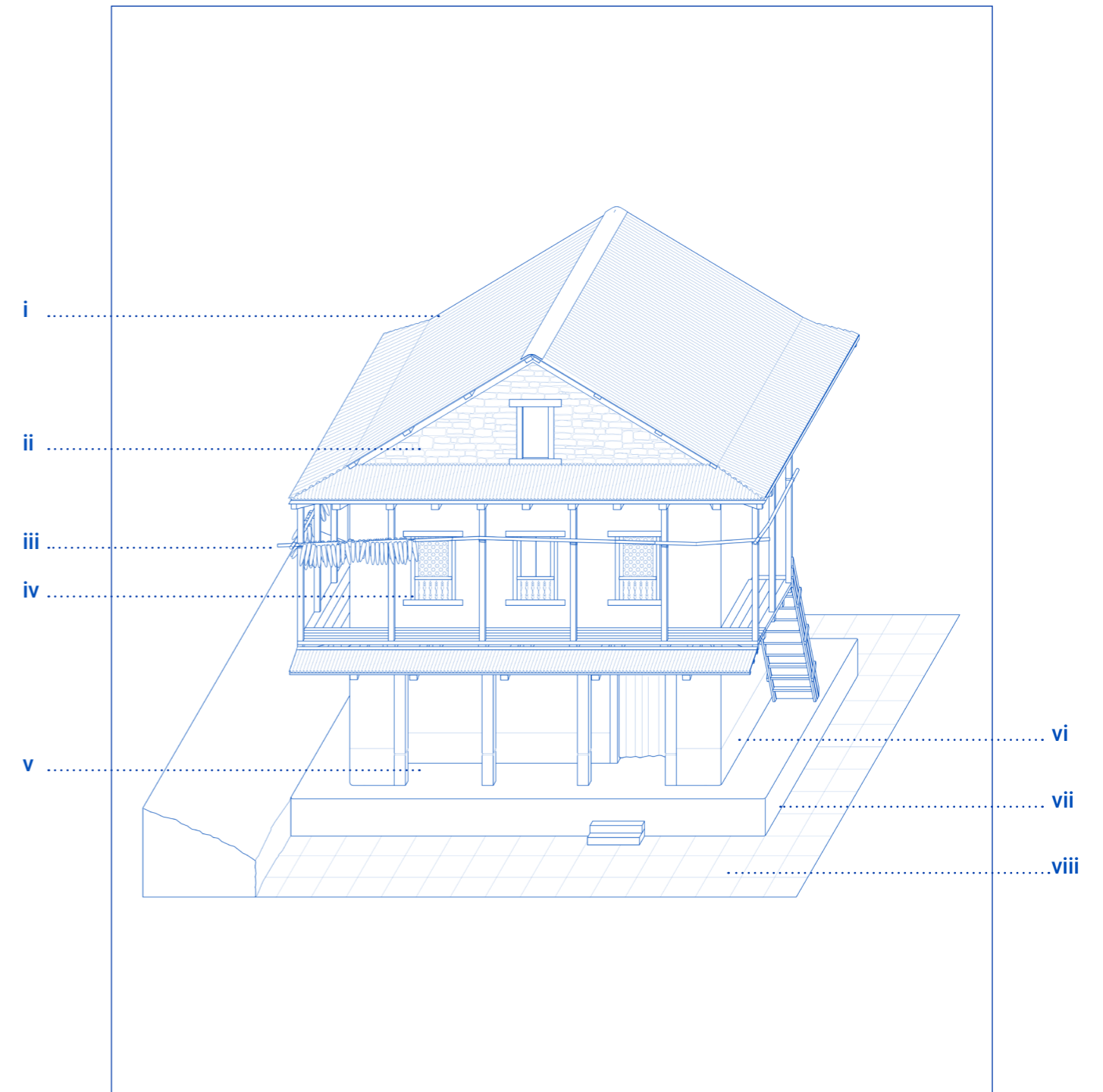
- i Corrugated tin roof (traditionally thatch)
- ii Corn hung to dry
- iii Locally sourced timber structure
- iv Earthen wall
- v Metal railings for balcony
- vi Veranda (to welcome guests)
- vii Stone and earth raised floor
- viii Agan (social space)



Sketch by Tap Rai with author's notes.

- a Tap's family home (mul ghar) in Khotang, Nepal
- b Pali (separate building)
- c Ground floor plan and its thresholds
- d Hearth (three symbolic stones)
- e Central structural timber post

\* Hearth stones: Palung (father, air), Malung (mother, water, Chalung (offspring, fire)



Line illustration. Referenced from photographs.

- i Corrugated tin roof (traditionally thatch)
- ii Attic (for family shrine)
- iii Corn drying on bamboo poles
- iv Wood carved window frames
- v Sikua (to welcome guests)
- vi Earthen walls
- vii Stone and earth raised floor
- viii Agan (social space)