

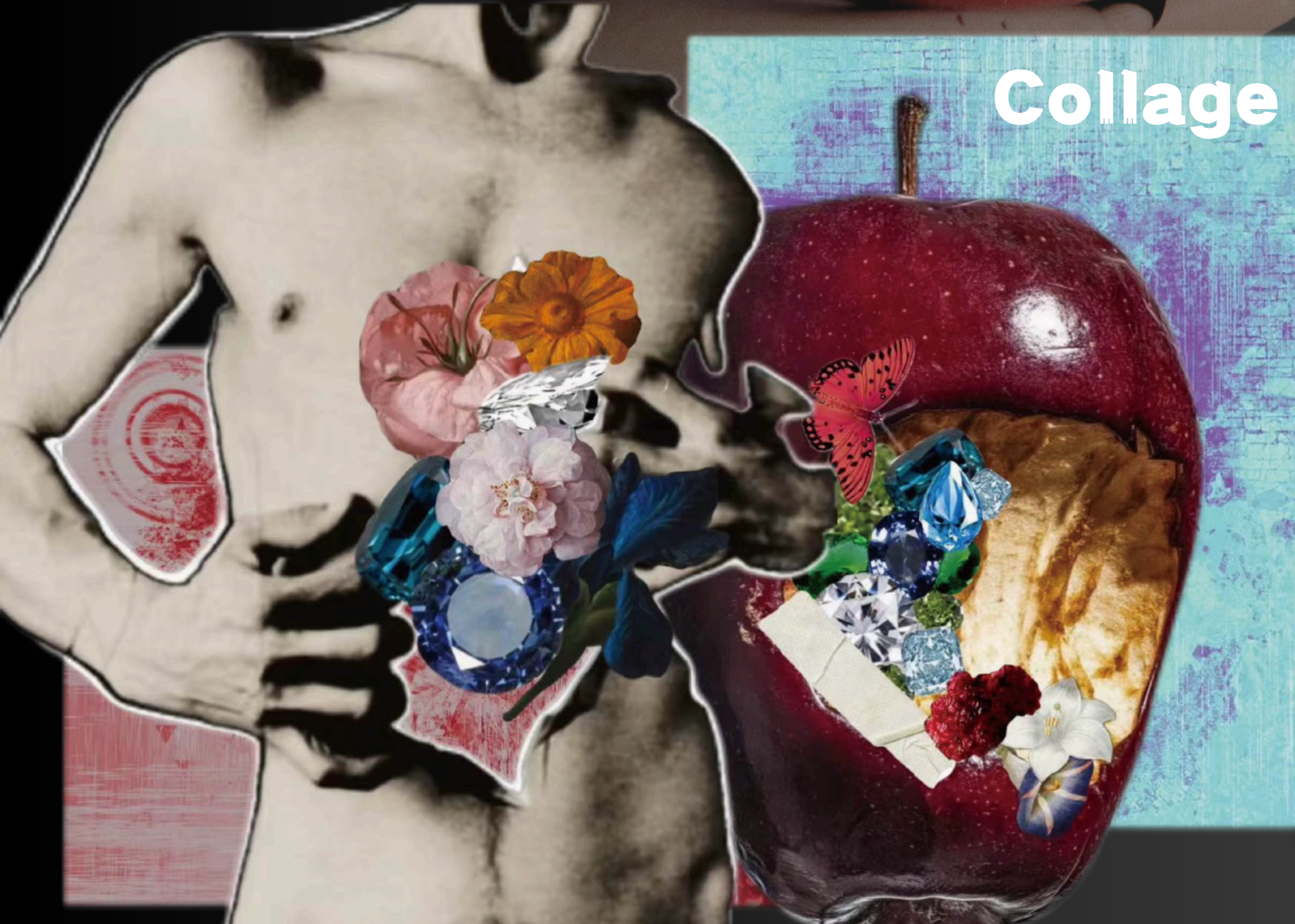
A close-up photograph of a red apple. The top of the apple is covered in a dense arrangement of colorful beads and sequins in shades of blue, black, white, and red. The apple is set against a dark background with a white surface below it.

THE BEAUTY OF DECAY

YUE WANG YUKI

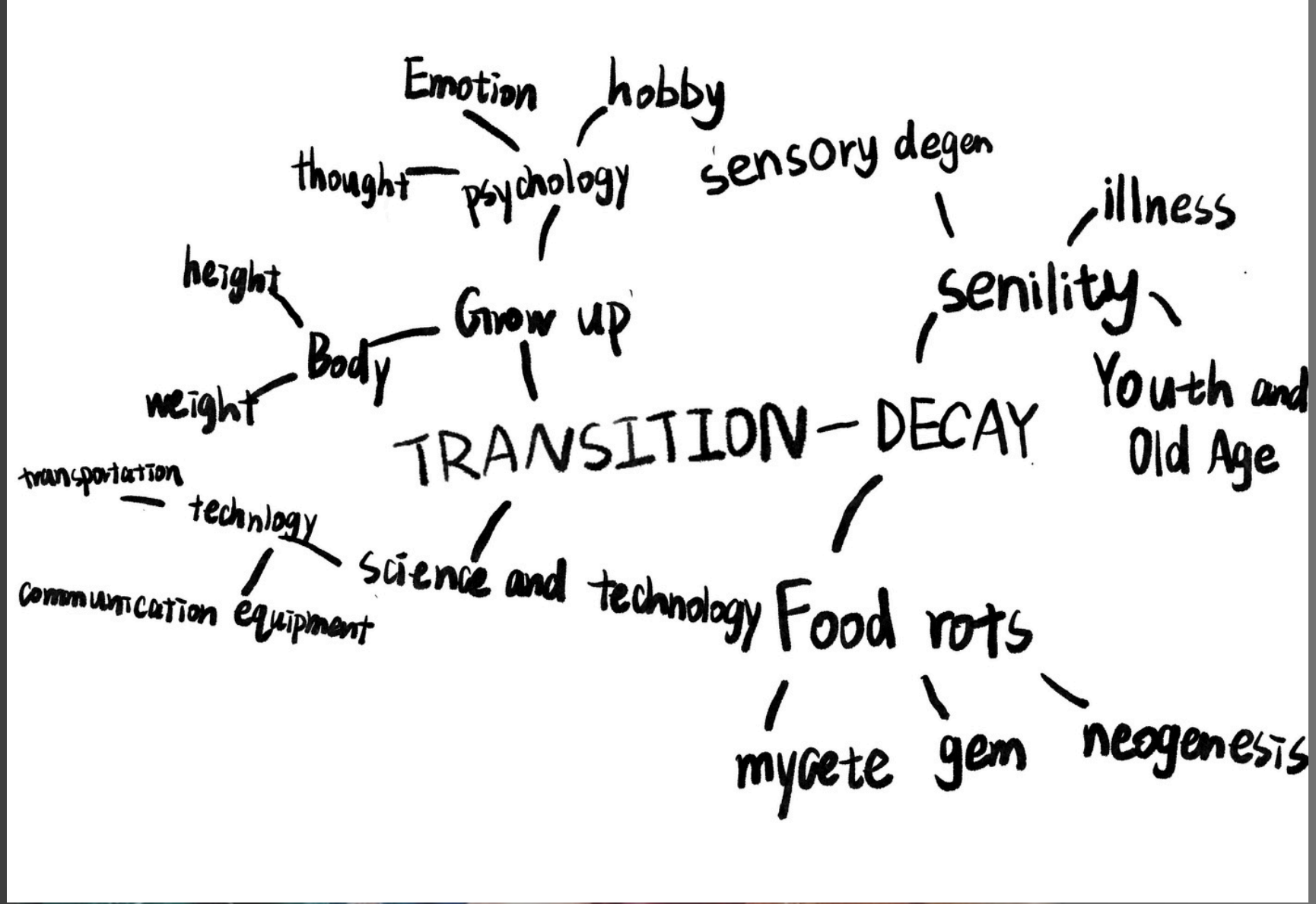
sketch

I want to set the rotten fruits with diamonds, creating a sharp contrast between the eternal luster of the jewelry and the decay process of organic matter, and interpreting the fragile beauty of the fading of life in luxury.

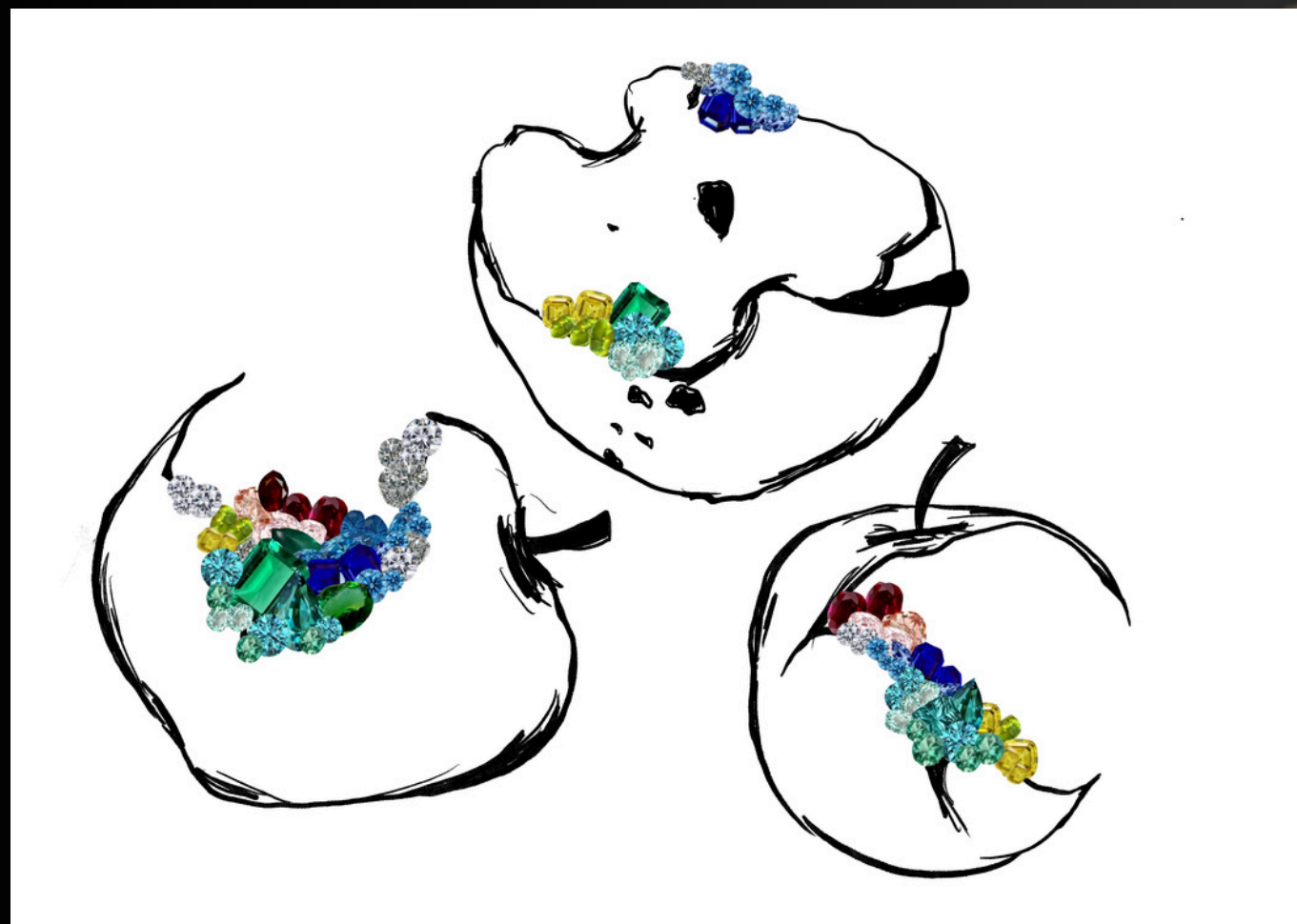


Collage

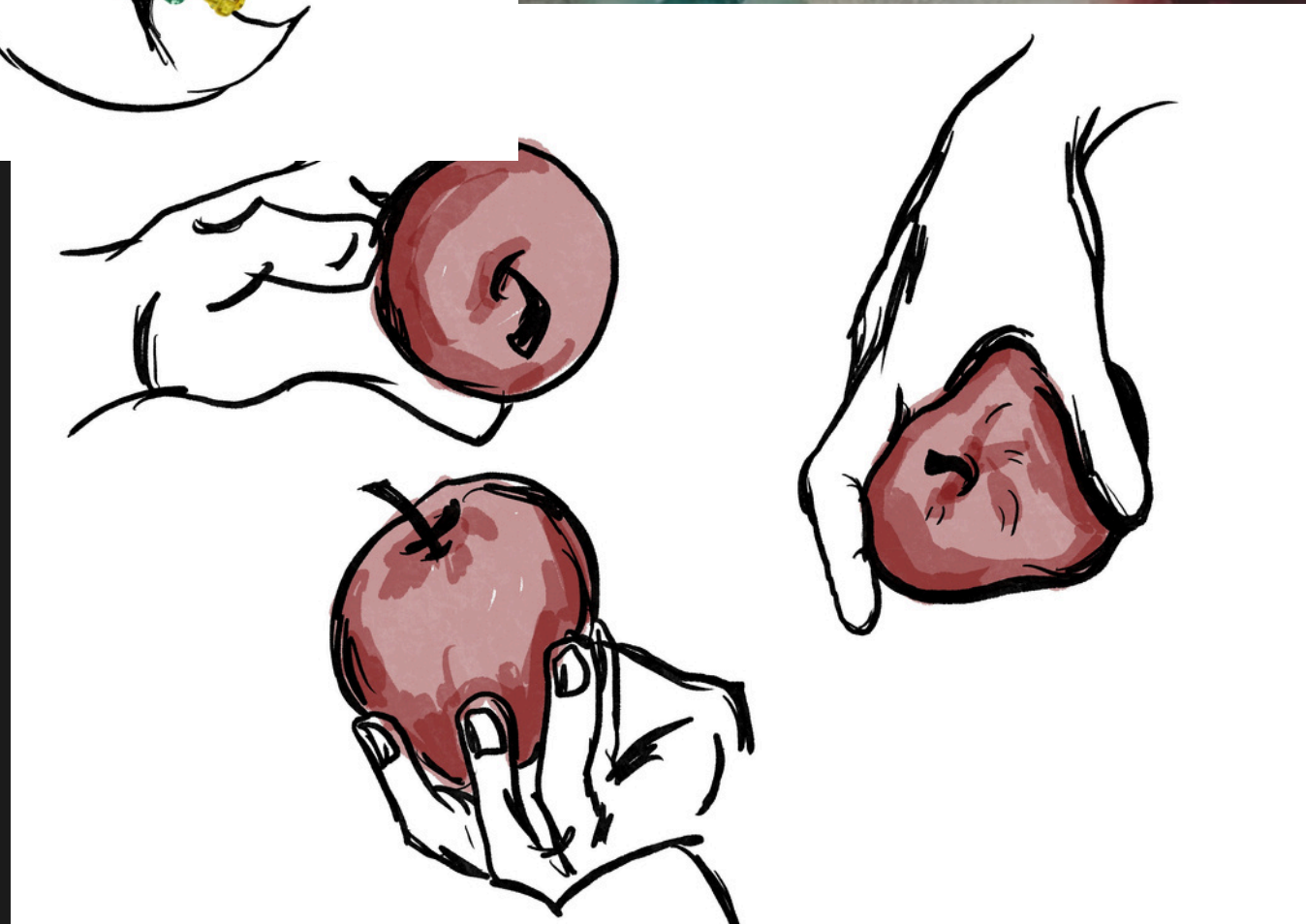
Mindmap



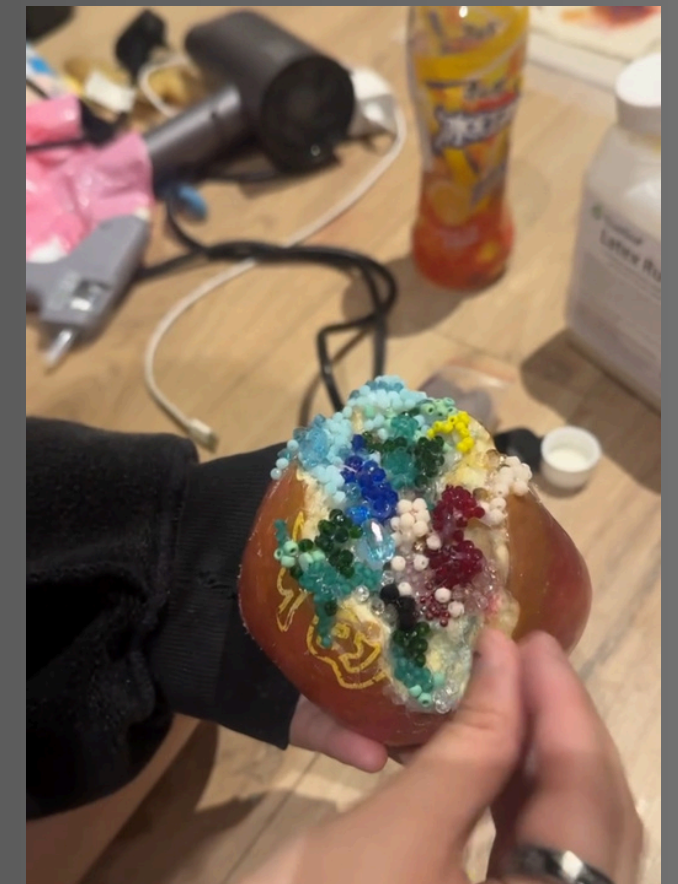
Design and attempt



Sketches and motion design



Attempt and Process



FINAL OUTCOME

