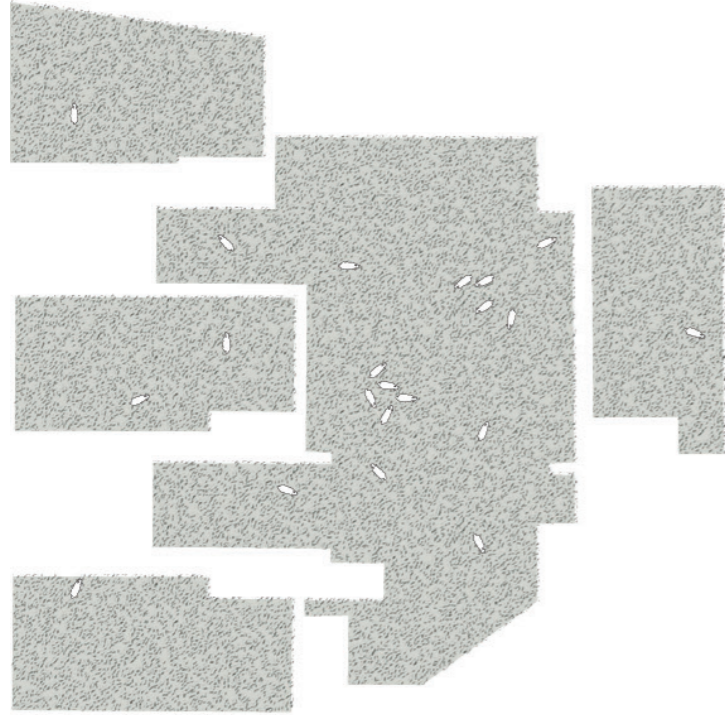


PROPOSAL – bringing back the land

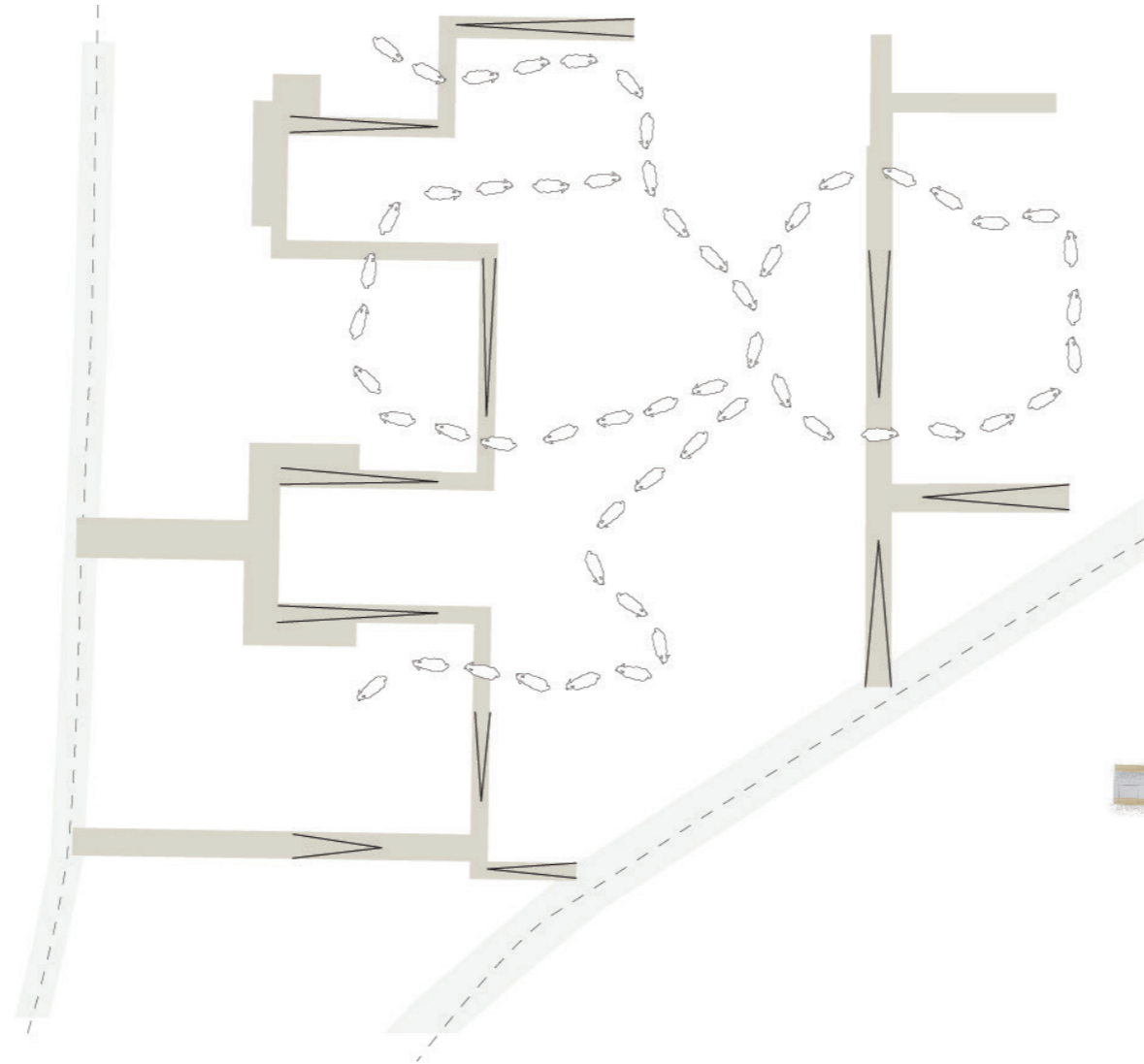
Key typologies

Within the proposal, 3 aspects define the landscape:

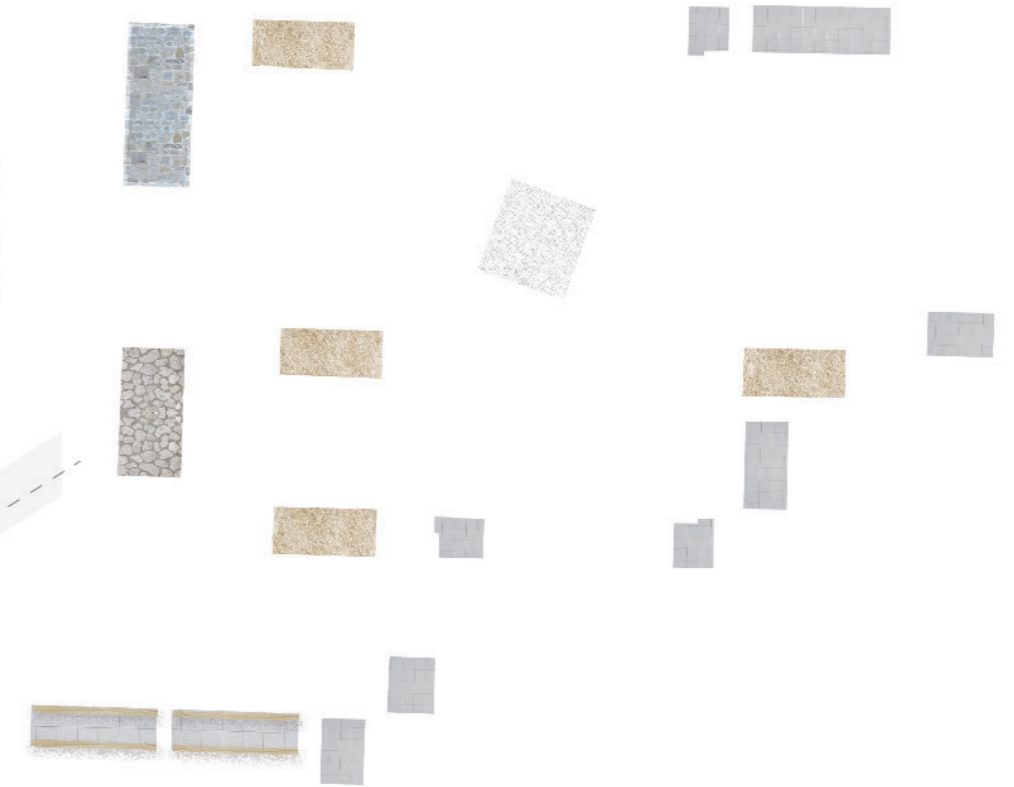
Open fields




Pathways



Buildings




By intervening with the existing land, open grass fields will provide a space for sheep to roam, as a way of introducing life to the site. Additionally this allows for phytoremediation to take place, removing contaminants from the existing land


 Human sloping pathways

 Public pathways

 Sheep pathways

 Sheep barn

 Lodges

 Entrance/lobby

 Sheep watch tower

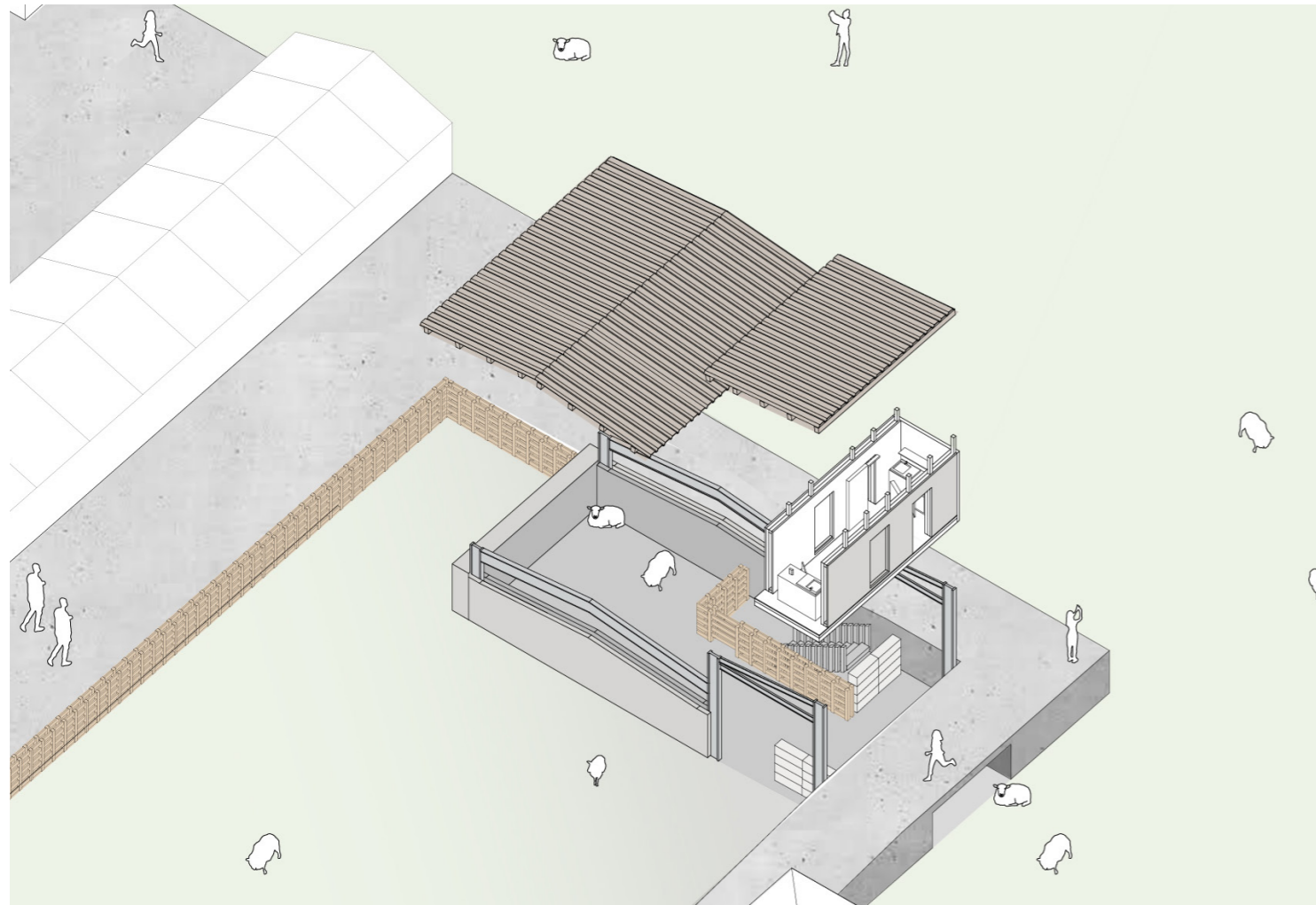
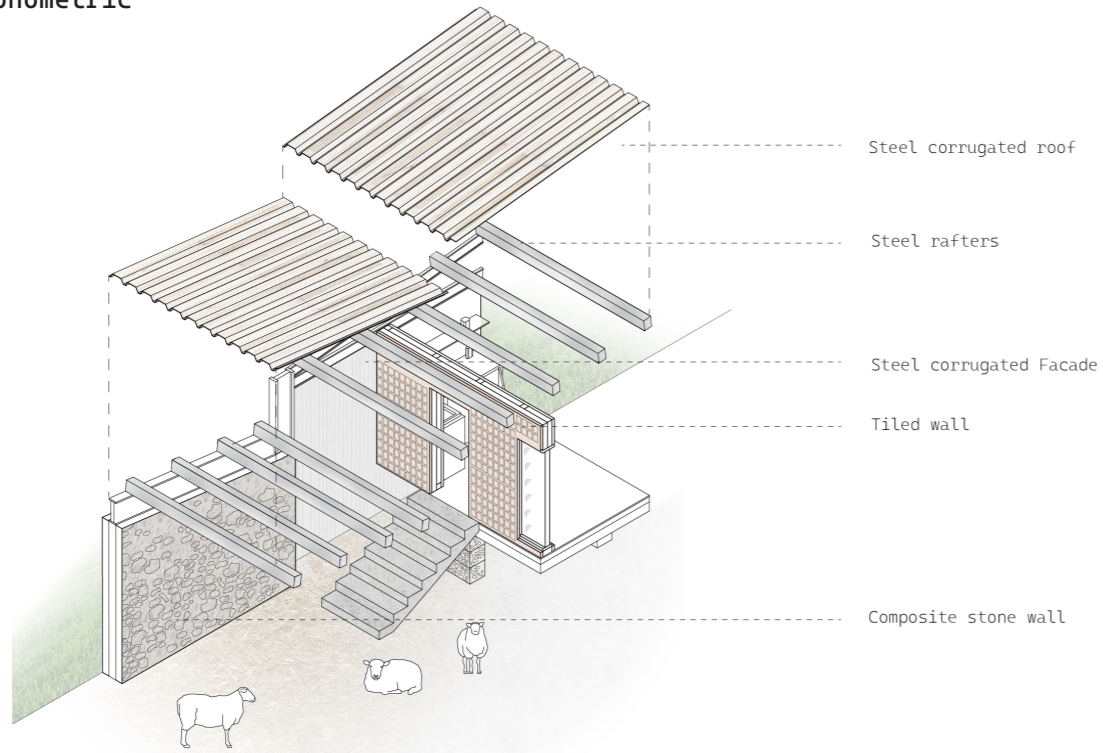
 Classroom

 Greenhouse

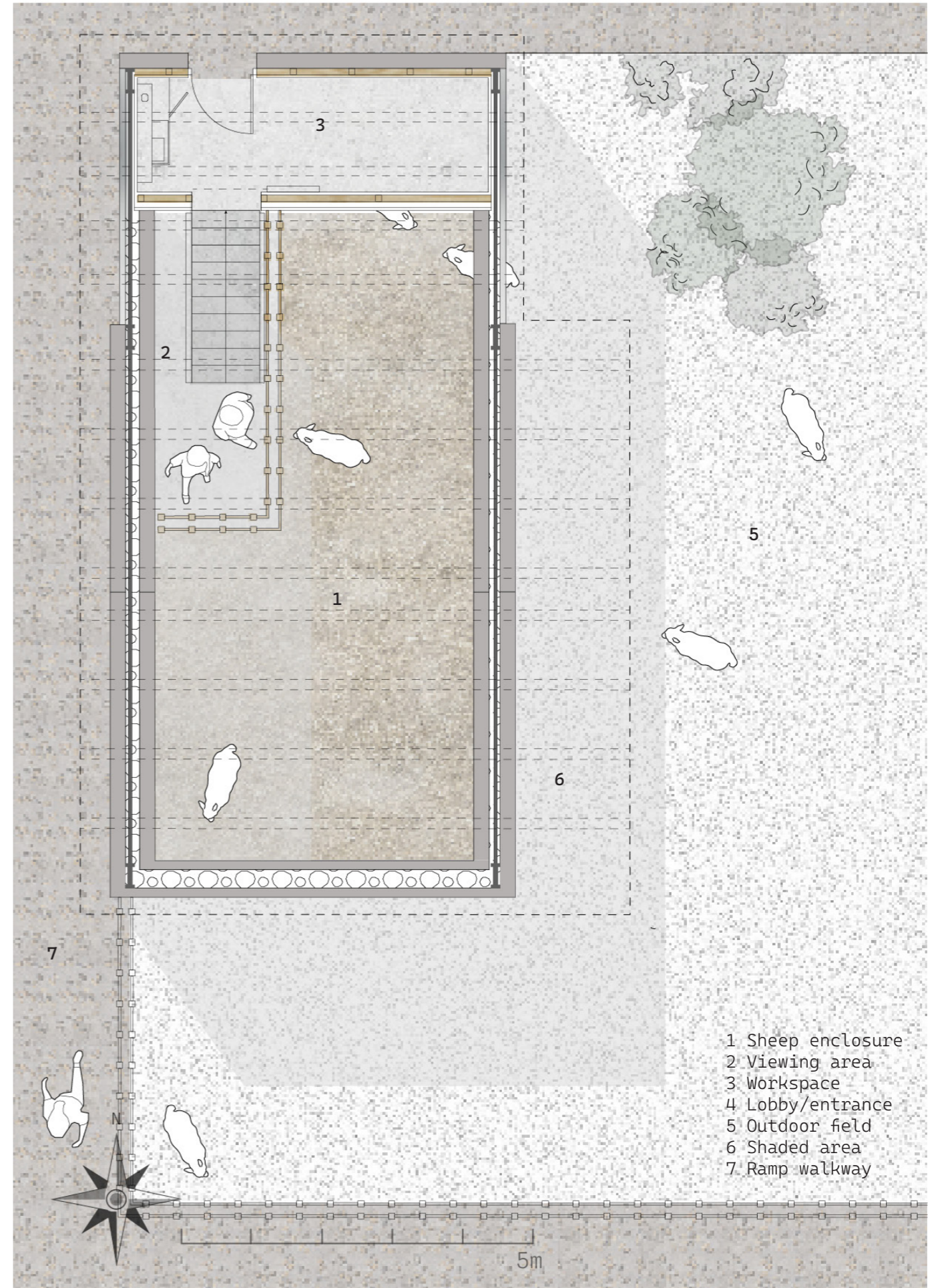
SHEEP BARN

Designing a space for sheep

Fragment axonometric



1:50 sheep barn plan



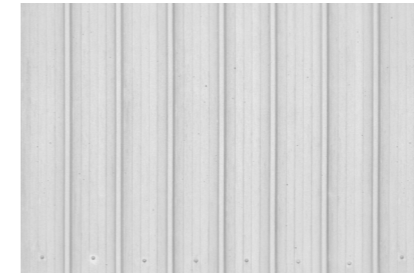
1:100 UNFOLDED ELEVATION

A continuous landscape of stone and steel stretch out across the site, with undulating walkways that weave in and around the fields of a sheep city

Materials



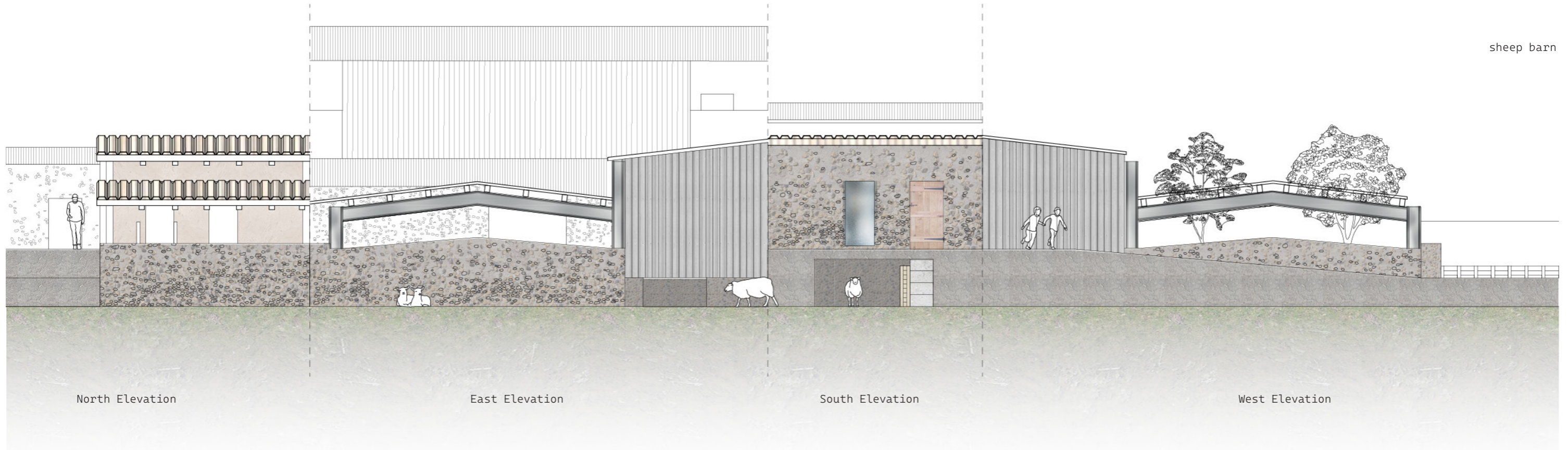
Mixed stone with recycled asphalt aggregate



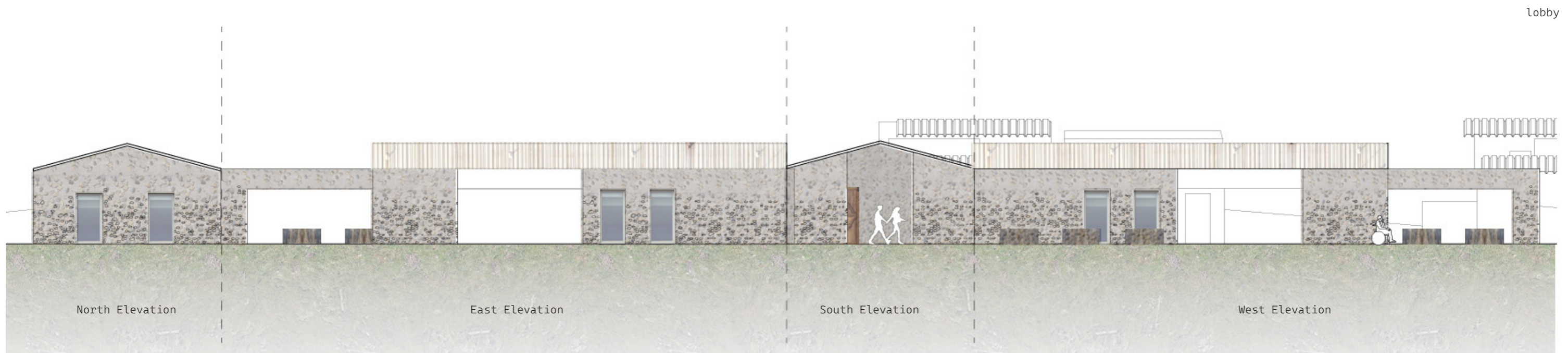
Corrugated steel facade



Steel columns and rafters



sheep barn

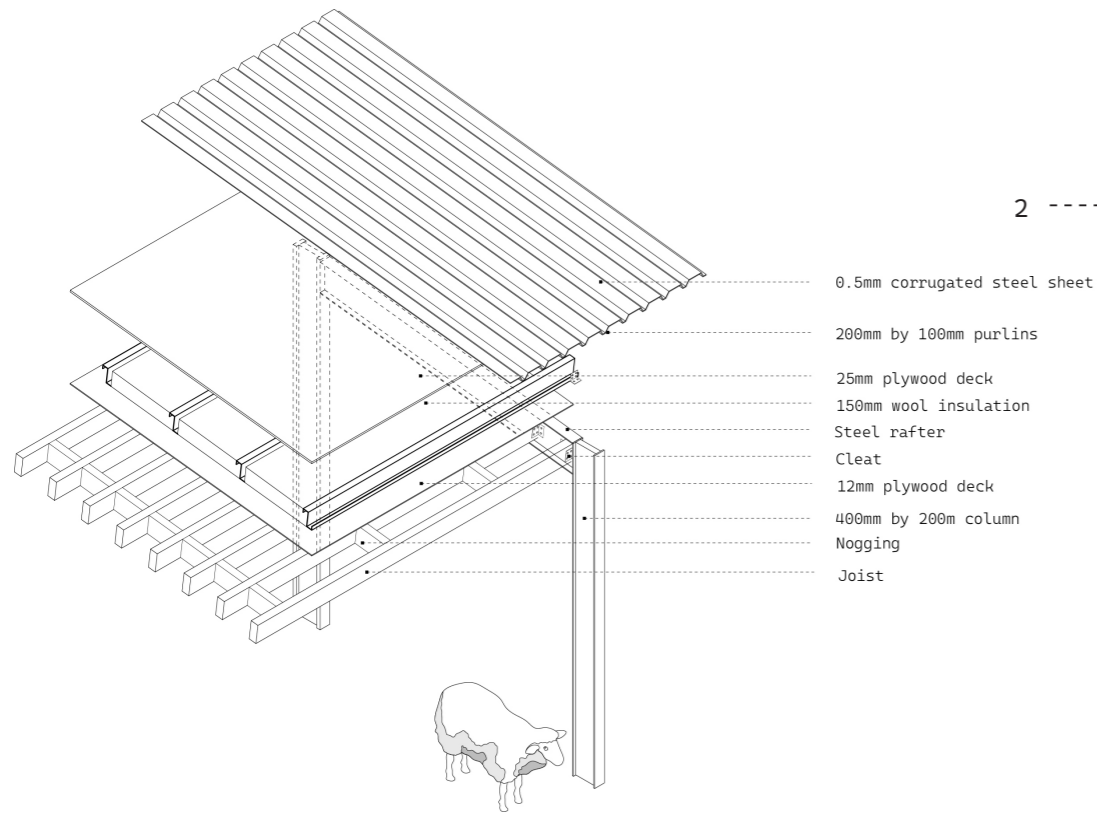


Lobby

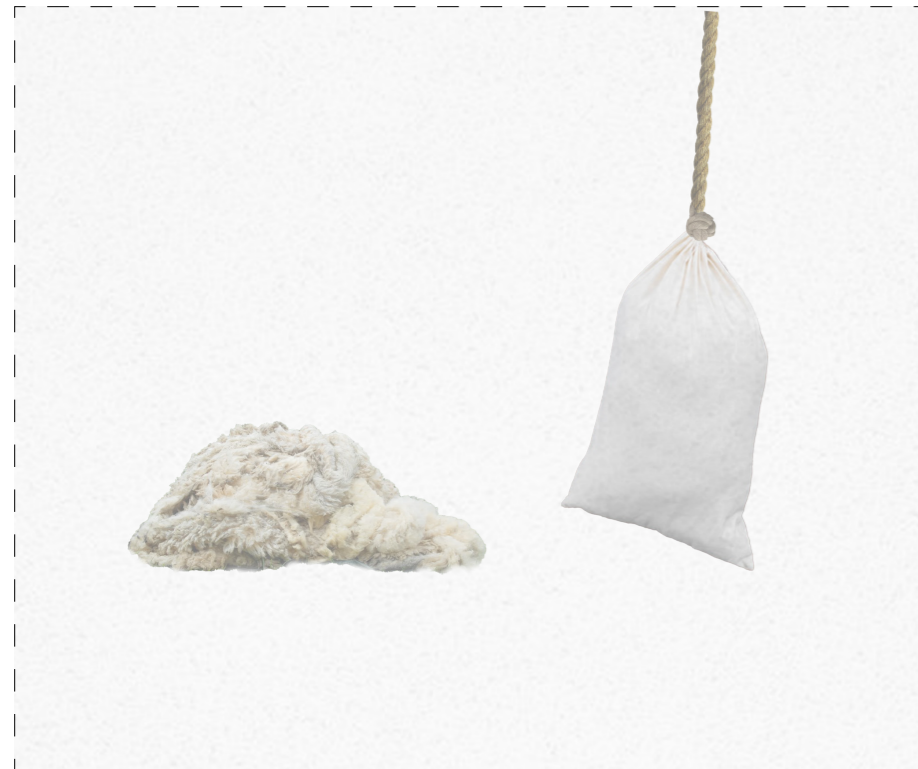
SHEEP BARN WORKSPACE

1:20 section detail

1 Roof detailing

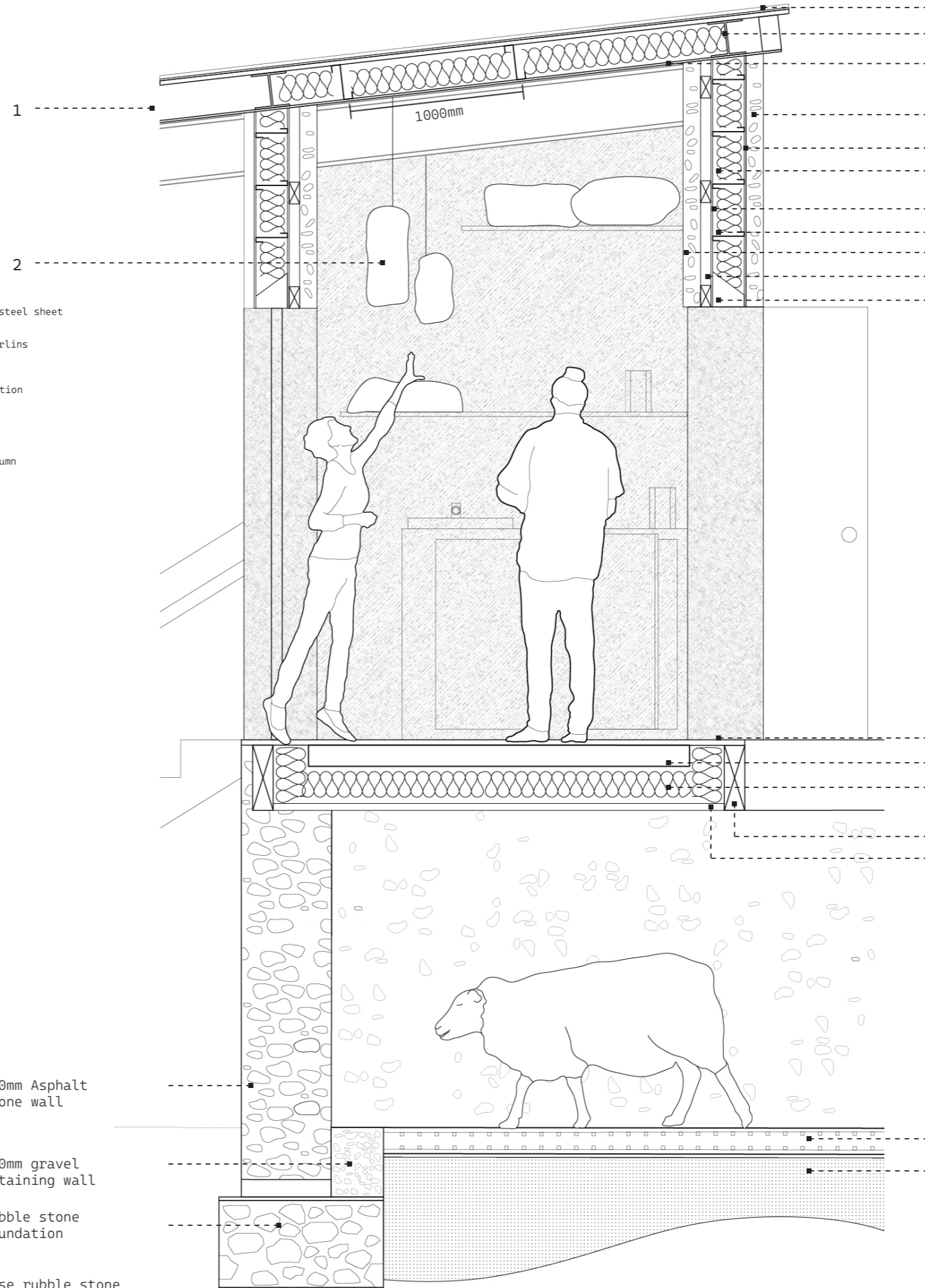


2 Sheep wool insulation



500mm Asphalt stone wall
 100mm gravel retaining wall
 Rubble stone foundation

Base rubble stone



corrugated steel sheet
 steel rafters
 plywood underlayment

150mm asphalt stone wall
 waterproof membrane
 sheep wool insulation

Vapour barrier
 200mm x 100mm Z purlins
 150mm asphalt stone wall
 Stud wall
 Steel lintel

25mm screed
 100mm concrete slab
 150mm sheep wool insulation

Header joist
 Waterproof membrane

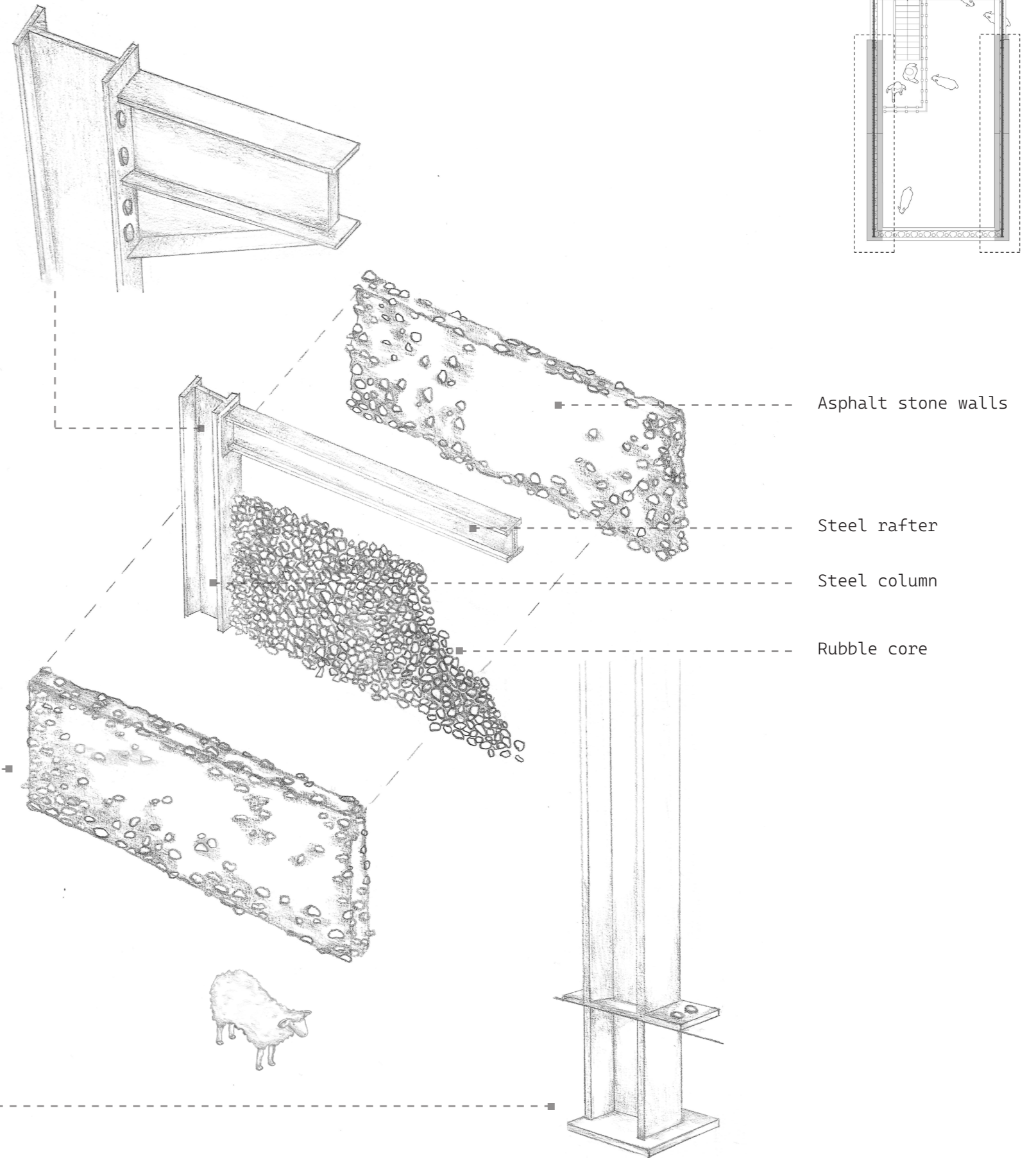
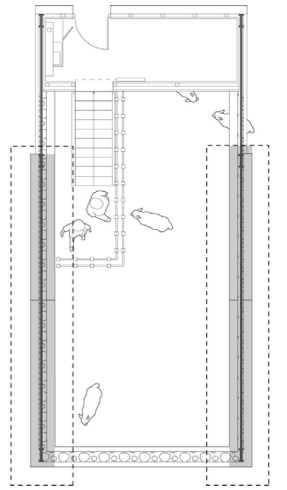
100mm reinforced concrete slab
 Bedding sand

SHEEP BARN WALL

Axonometric hand drawing

Selecting a key aspect of the sheep barn, the asphalt wall connection with the steel columns.

Highlighting the contrast between the asphalt stone walls and the steel columns



Own material tests with asphalt refer to p.85 in design journal



Steel