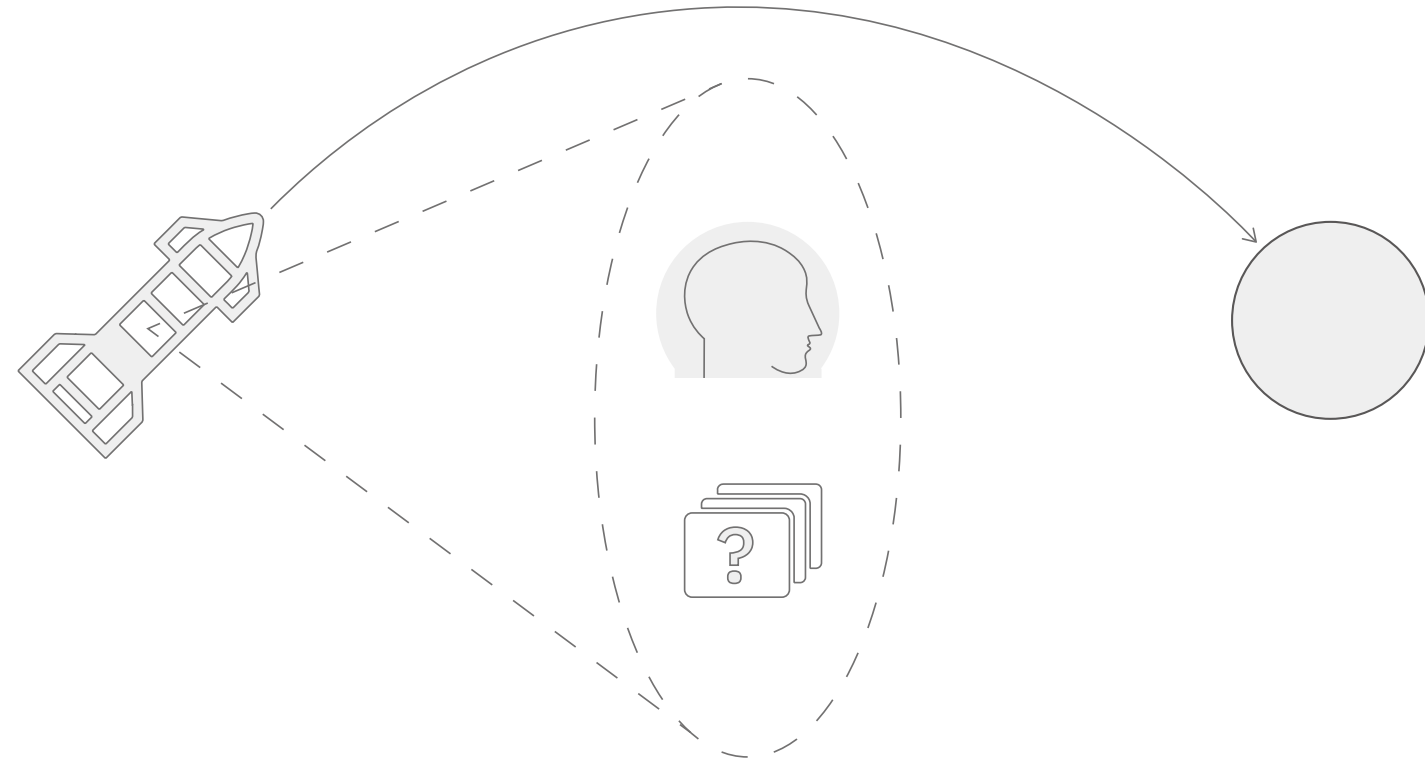
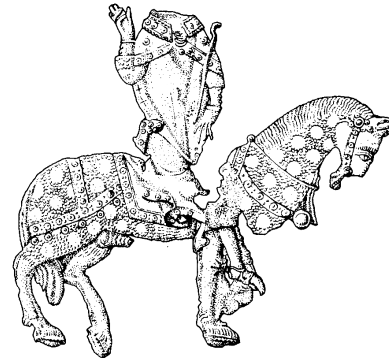
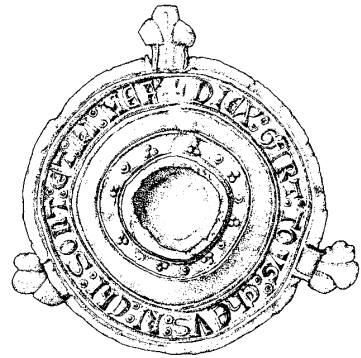


Brief for Unit 09



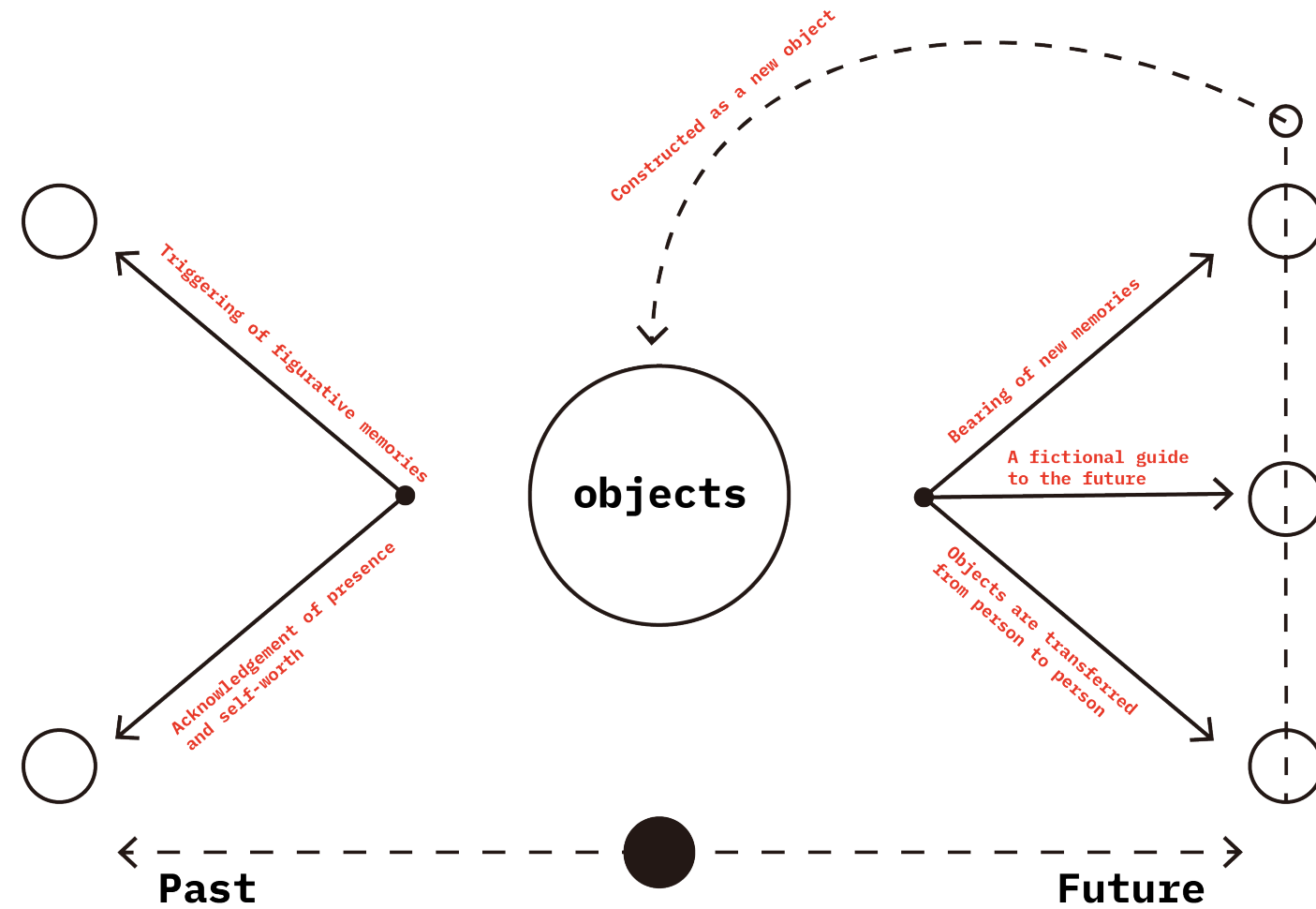
In long-term, one-way space missions, astronauts face significant emotional isolation and psychological stress, primarily due to prolonged separation from loved ones, home, and the limitations on immediate return. While existing measures assist astronauts primarily with survival needs, they fail to fully address the emotional requirements in extreme isolation environments. Thus, the author hypothesizes that by incorporating designs that evoke emotional triggers into personal belongings, it is possible to alleviate astronauts' feelings of emotional loneliness. By analyzing individuals in historical contexts facing similar challenges, it is possible to project future scenarios to provide dynamic emotional support and meet astronauts' emotional needs across various cultural backgrounds. This multi-layered emotional support design will offer long-term psychological health benefits and form a foundation for emotional well-being in future extraterrestrial living.

Key research and scenarios



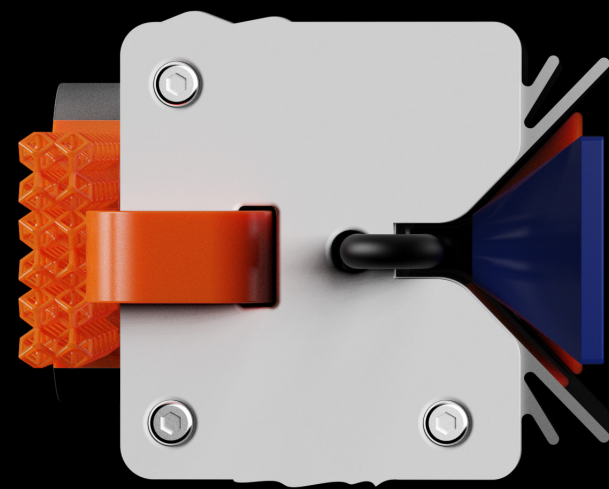
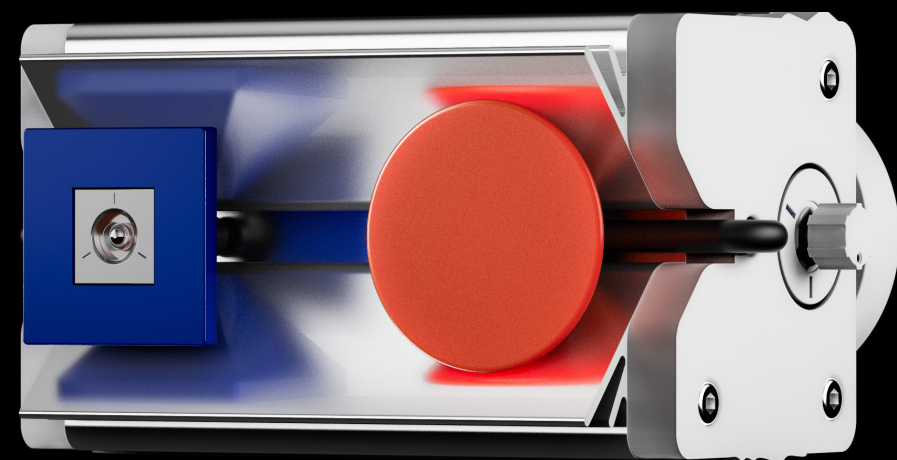
This research explores how emotional connections to objects can support astronauts facing isolation during long-term space missions. By examining historical migrations—such as medieval pilgrimages to Santiago de Compostela, where individuals carried meaningful items like pilgrimage badges—we can understand how objects helped ease emotional burdens in extreme journeys. Drawing from these historical insights, the study aims to inform design strategies that enhance psychological well-being in space, showing that despite technological progress, core human emotions remain constant.

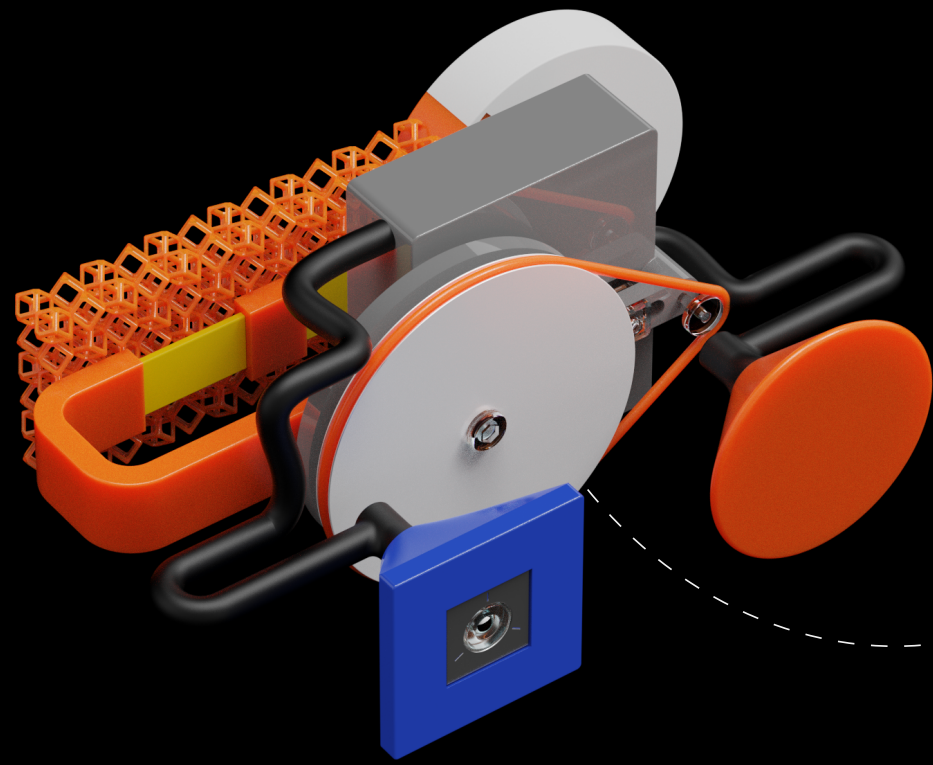
Key research and scenarios



Most pilgrimage badges, aside from those found in burials, have been discovered in rivers. The analysis of the Pilgrimage badge reveals three characteristics of the emotional connections associated with objects. Firstly, the object may be deeply tied to the owner's life experiences and possess certain iconic features, enabling it to evoke emotional resonance directly in an environment away from home. Secondly, the object may possess a "pheromone-like" function: even if it does not directly correlate with a specific scene in the owner's memory, it can indirectly trigger a concrete recollection of that scene, thereby evoking emotional resonance. Lastly, when such objects are passed along between individuals with close relationships, their significance is transmitted as well, even though the understanding of the object may vary between the giver and the receiver.

[Monument composition device]





By studying the relationship between medieval pilgrims and pilgrim badges, a recording device for interstellar migrants was designed to create memory carriers and strengthen ties with their homeland. This device aims to alleviate the longing for home and doubts about personal existence in isolating environments through these objects.

The device records personal experiences in a ritualized manner and preserves precious memories of Earth. Ultimately, the information is etched onto a metal disk, becoming a personal monument for the owner, akin to a pilgrim badge. Through this device, migrants on lonely journeys can connect with their homeland and personal past, transforming the metal disk into a spiritual anchor.

