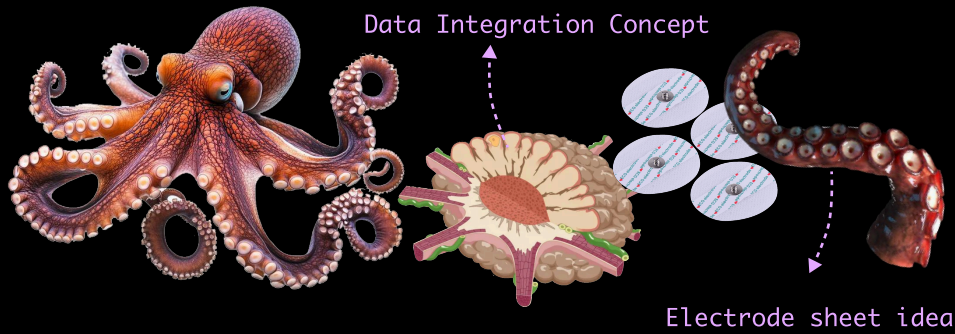


IDEATION

Why Octopus?

The idea was inspired by octopuses because of their extreme individual adaptability, which is similar to an individual's survival strategy in a highly monitored society.



Functional similarities

Psychological



Psychological

Emotional changes (positive negative)



Depression values

Blood pressure to reflect increased heart rate, expression



Conformity and Adaptability

Expression, Sweat



Desire value

Compositional analysis of sweat

Physiological



Exercise

Motion, Heart Rate, ECG



Sleep

Respiratory rate Whether you stay up late Exercise - movement, heart rate, ECG



Diseases

Organ, Neuroendocrine

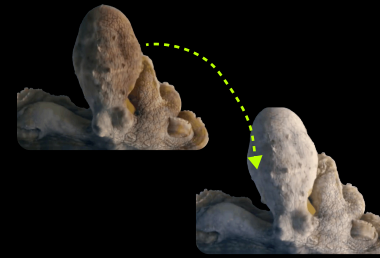


Diet

Calorie intake.

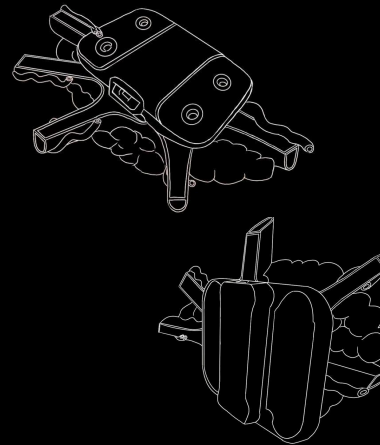
Wearable device concept

1. Dress Colour



Through the color-changing mechanism of the bionic octopus, thermochromic, electrochromic, photochromic materials or micro-lighting mechanical structures can be subsequently utilized to enable the clothes to realize dynamic color-changing and pattern-changing according to the environmental changes, body states or emotions, which can be applied to the scenarios of daily wear, health monitoring or special camouflage.

2. Data Integration Concept



It can simulate the expansion and contraction process of octopus pigment cells through modular pigment units, bionic opening and closing mechanisms and intelligent control systems, giving the monitoring suit the ability to dynamically change color, respond to the environment and replenish pigments, realizing a design with a sense of life and environmental adaptability, as well as the ability to receive and store the user's body information data.

3. Electrode sheet idea



The flexible fit and adjustable adsorption force of octopus suction cups are similar to the fit and conductivity needs of medical electrode pads. Bionic design can draw on its structure to improve the comfort, adaptability and signal acquisition stability of electrode pads.