



# CONTENTS

REKINDLING THE EMOTIONAL CONNECTION  
BETWEEN PEOPLE AND THE CITY

## CHAPTER ONE INSPIRATION

1

EMOTIONAL ENGAGEMENT AND CIVIC  
ACTIVATION

## CHAPTER TWO RESTORING EMOTIONAL CONNECTIONS

5

RESEARCH AND DESIGN OF STREET MARKET

## CHAPTER THREE STREET MARKET

15

MODULAR UNITS AND FLEXIBLE COMBINATIONS

## CHAPTER FOUR SPECIFIC DESIGN

27



1

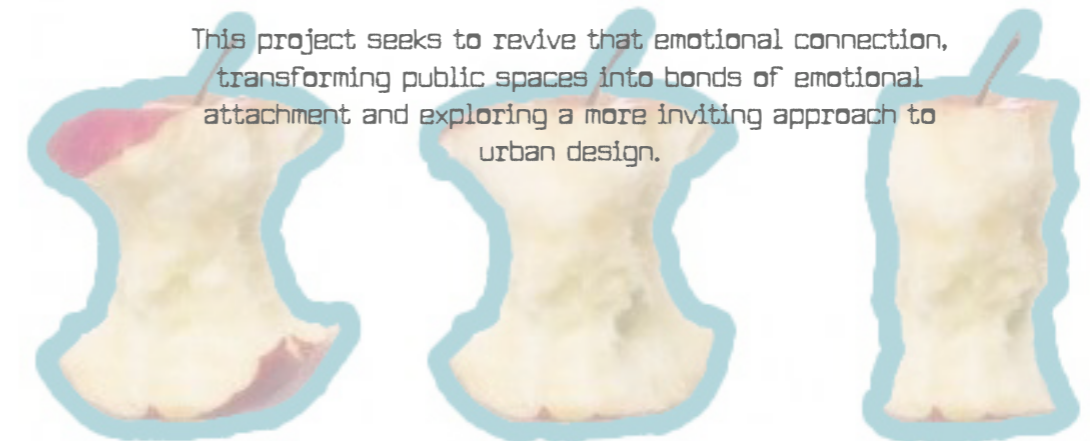


The design inspiration stems from an issue identified in reading—an increasing disconnect between people and their emotional connection to cities. Rapid urban development has distanced people from their surroundings, leading to a fading sense of warmth and belonging in public spaces.



## CHAPTER ONE INSPIRATION

REKINDLING THE EMOTIONAL CONNECTION BETWEEN  
PEOPLE AND THE CITY



This project seeks to revive that emotional connection, transforming public spaces into bonds of emotional attachment and exploring a more inviting approach to urban design.

Many years ago, at a meeting of the New York Municipal Art Society, William Hollingsworth Whyte said, "I am going to show you a video of people walking on the streets of Manhattan, and I want you to identify what they all have in common." Feet, shoes, legs, trousers, shirts, skirts, arms, handbags, briefcases, umbrellas, heads, hats, faces, smiles... Smiles? Why would people be smiling on the streets of New York?

At that time, New York was in the midst of an urban crisis, with citizens walking through a city that many believed was in decline. Some were happy, while others, understandably, felt concerned, troubled, or even numb. Yet, when we try to focus on ordinary individuals within these urban spaces, our attention often drifts toward a "problem-solving" mindset, causing us to overlook other equally important elements— in this case, the happy people on that street. Their smiles suggest that there are places in the city that people enjoy, spaces that nurture well-being and happiness. In these places, they feel a sense of emotional connection with the city. If we focus on expanding happiness and establishing positive connections between people and cities, we can approach "problem-solving" from a new angle, fostering mutual growth between people and the city.

The emotional bond between people and cities manifests on multiple levels. This connection goes beyond material interactions, reaching into emotions, memories, belonging, and identity.

The establishment of memory-rich places allows people to find a sense of belonging in the city, while also preserving collective memory and shared emotional experiences.

*"The relationship between Taipei and me is like that of an old couple who have lived together for more than twenty years. Any feelings of dissatisfaction are always permeated with deep affection."*

Ma, S., Xu, Y., Yao, R., Chen, G. & Huang, W. (2006) One Hundred Reasons to Live in Taipei. Taipei: Dahuai Culture.

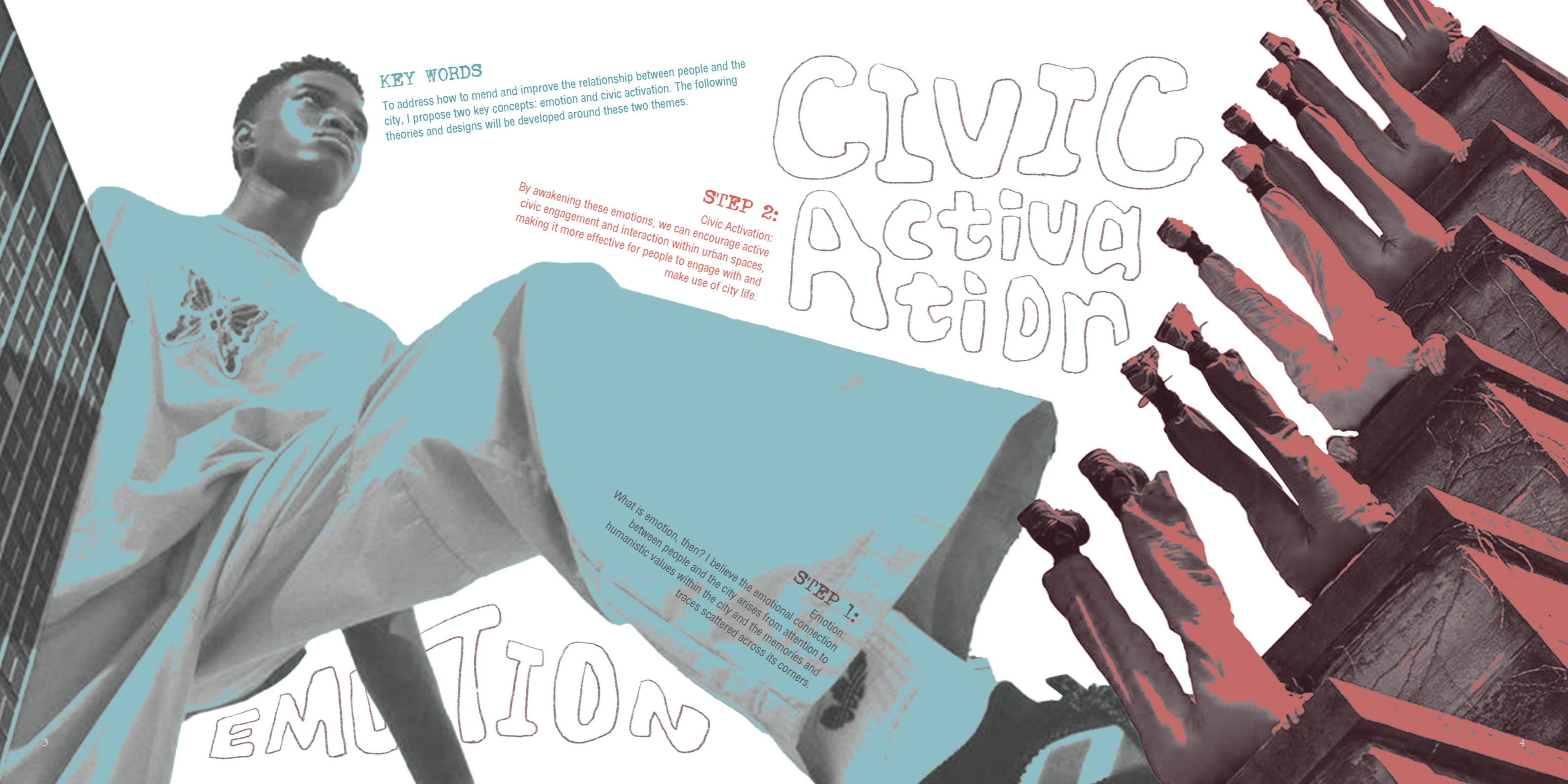
Cities shape people's daily lives, and people's emotions, in turn, enrich the culture and depth of the city. This reciprocal emotional bond makes the city a warm, humane, and culturally rich place to live.

*"A city is a state of mind... It is a product of nature, particularly a product of human nature."*

The existence and significance of people are the fundamental purpose and the truest basis for urban development and renewal. However, under the influence of the elite-driven concept of "new elitism," contemporary urban development and renewal are no longer people-centered. Instead, they increasingly follow the will of those in power, focusing on achieving commercial goals and maximizing profits. Therefore, this shift also has gradually weakened the emotional bond between people and the city.

A city is like a theater, with each specific space carrying different events and corresponding memories. We live not only in the physical space of the city but also in our own memories and imaginations within it. To reestablish a close emotional bond, we must first seek and connect the memories and emotions dispersed throughout the city, rekindling people's attention and enthusiasm for it, thereby encouraging public participation in urban life. Emotions drive people to give back to the city and participate in it. When individuals interact within a space—whether with other people, objects, or even the surrounding environment—these experiences leave lasting memories, further deepening the emotional connection between people and the city.

## PEOPLE AND CITY



**KEY WORDS**

To address how to mend and improve the relationship between people and the city, I propose two key concepts: emotion and civic activation. The following theories and designs will be developed around these two themes.

# CIVIC Activa Atidn

**STEP 2:**

*Civic Activation: By awakening these emotions, we can encourage active civic engagement and interaction within urban spaces, making it more effective for people to engage with and make use of city life.*

**STEP 1:**

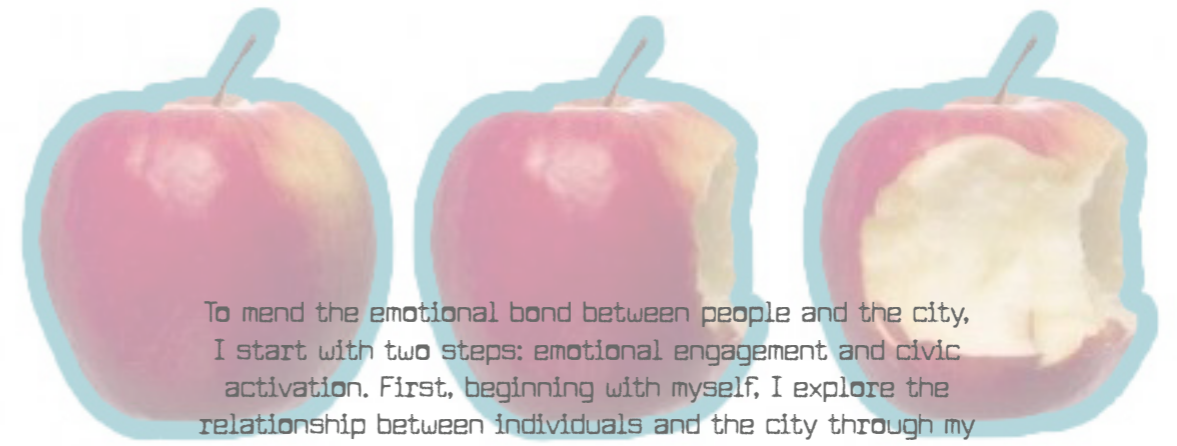
*Emotion: What is emotion, then? I believe the emotional connection between people and the city arises from attention to humanistic values within the city and the memories and traces scattered across its corners.*

# EMOTION

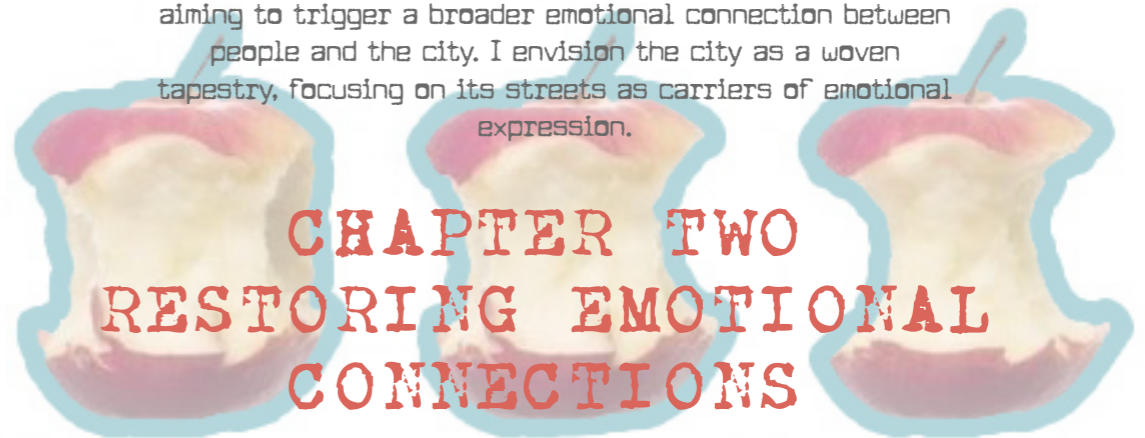
1

2

3

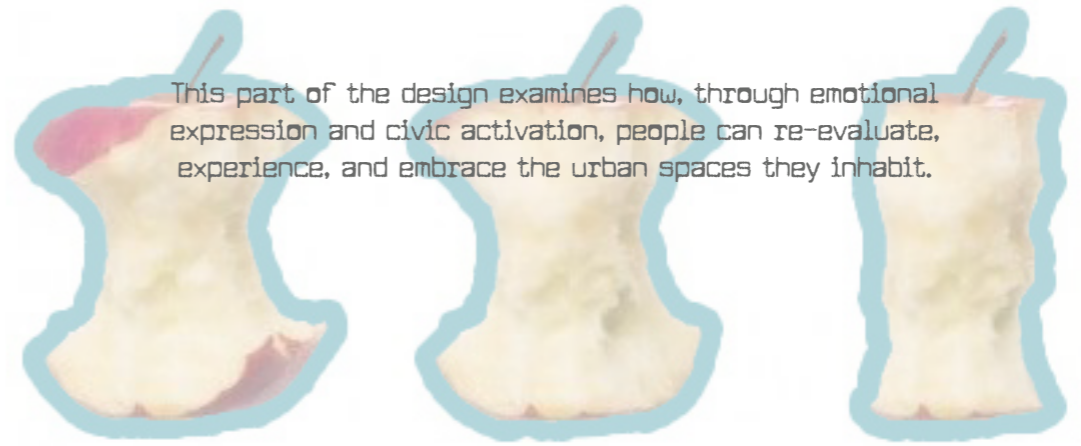


To mend the emotional bond between people and the city, I start with two steps: emotional engagement and civic activation. First, beginning with myself, I explore the relationship between individuals and the city through my own emotions and memories within the urban environment, aiming to trigger a broader emotional connection between people and the city. I envision the city as a woven tapestry, focusing on its streets as carriers of emotional expression.



## CHAPTER TWO RESTORING EMOTIONAL CONNECTIONS

### EMOTIONAL ENGAGEMENT AND CIVIC ACTIVATION



This part of the design examines how, through emotional expression and civic activation, people can re-evaluate, experience, and embrace the urban spaces they inhabit.

## EMOTION MAPPING

In place theory, it's believed that individuals assign special meaning to specific places, forming positive emotional bonds and a desire for lasting connection. This gives places a sense of spiritual significance and creates what's known as place attachment. With this in mind, I decided to use myself as the subject of study to explore my emotional connections with several cities that have special significance in my life.

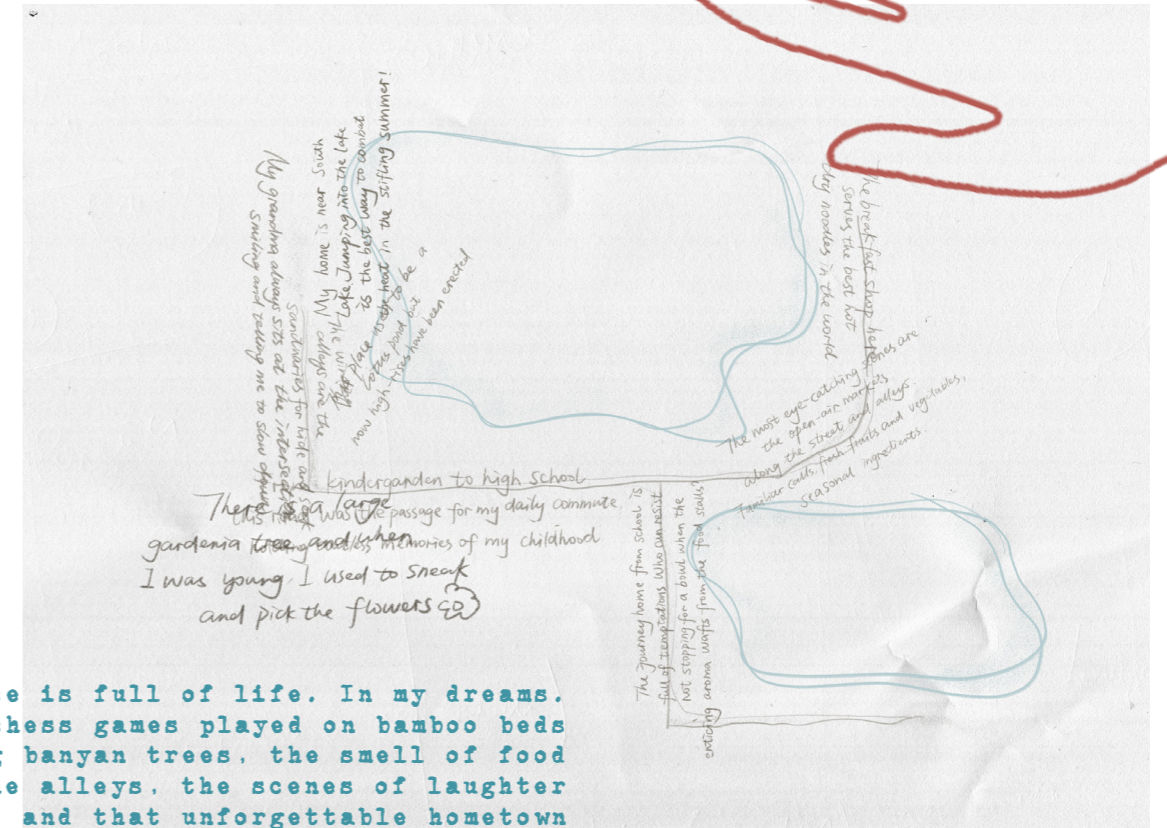
Growing up is essentially a process of continually forming geographic connections with the world. For Chinese people, there are generally three foundational places that shape one's inner world: the hometown, the capital, and the current place of residence.

These three places form the foundation of my perception of the world around me. In addition to these, Iceland, a place I visited, also left a deep impression on me.

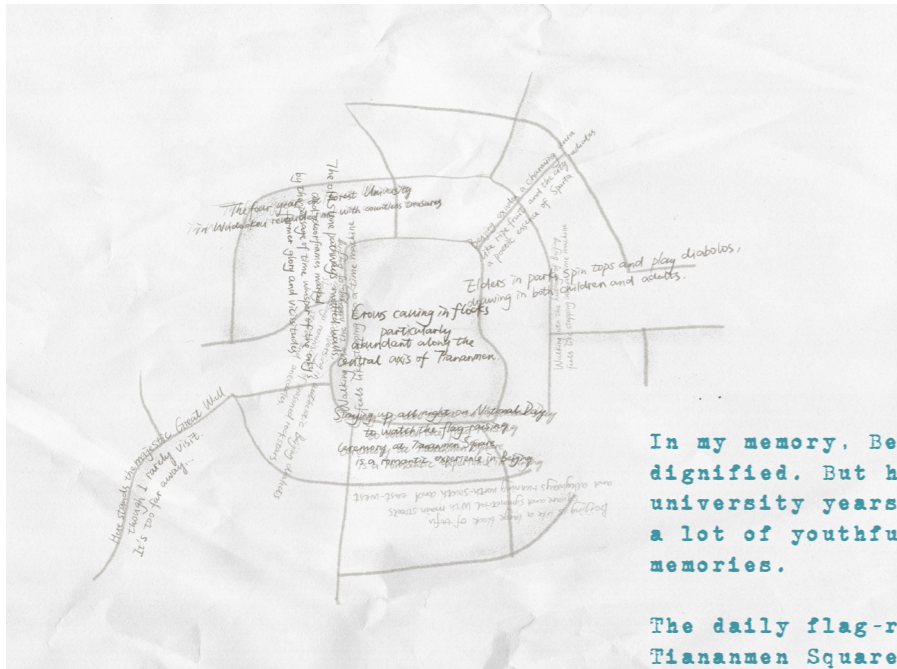
As a child, I often recorded my daily life in a diary. Text has always been the simplest and most direct tool for expressing emotions. So, I tried combining text with maps to convey my feelings.

This place is full of life. In my dreams, I see intense chess games played on bamboo beds under the big banyan trees, the smell of food drifting through the alleys, the scenes of laughter and lively chatter, and that unforgettable hometown accent that always lingers.

-- WUHAN



Wang, Y. (2024). My Emotional Map 1 - Wuhan. unit2 research



Wang, Y. (2024) My Emotional Map 2 – Beijing. unit2 research

In my memory, Beijing is solemn and dignified. But having spent my four university years there, I've added a lot of youthful energy to those memories.

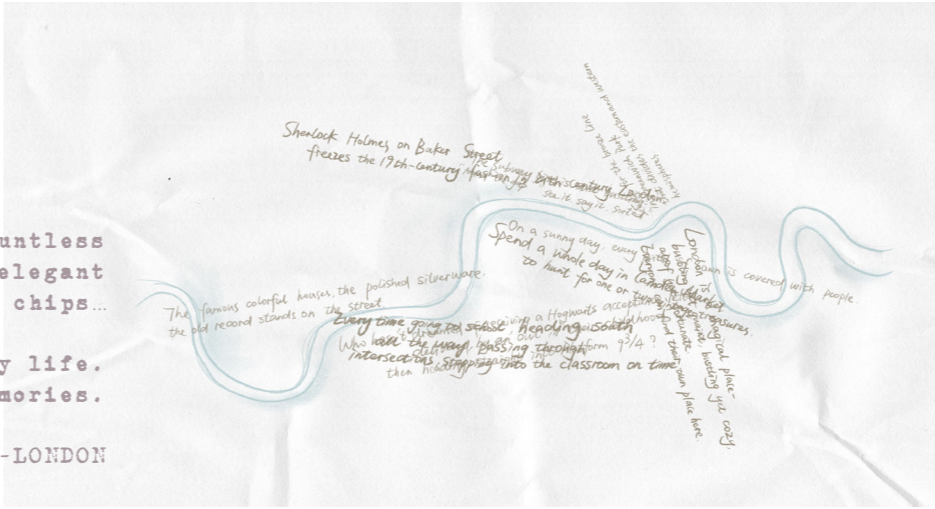
The daily flag-raising ceremony at Tiananmen Square, held in the early hours, is something everyone aspires to witness a towering mountain standing proudly in the hearts of millions of people.

--BEIJING

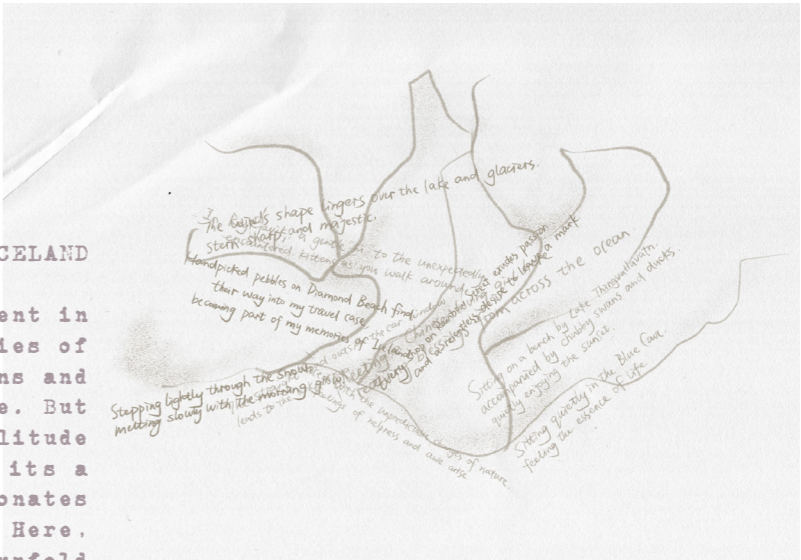
During the half-year I spent in London, I was captivated countless times by the freedom and art that filled the air. The elegant British accents, the fearless pigeons, the endless fish and chips...

Daylight saving time brought generous sunshine into my life. Playful yet dignified, London flows and leaps through my memories.

--LONDON



Wang, Y. (2024) My Emotional Map 4 – London. unit2 research



ICELAND

The ten days I spent in Iceland are memories of snow-covered mountains and an endless solitude. But this isn't like the solitude one feels within it's a solitude that resonates with the universe. Here, stories of fortune unfold effortlessly, as if these natural wonders were always meant for me to witness.

Wang, Y. (2024) My Emotional Map 3 – Iceland. unit2 research

In this way, I created a text-based map that captures my memories of these four cities. Through these recollections, I want to share my feelings for these places. I believe these memories are the best proof of my emotional connection with each place. In each person's life, there are unique experiences and memories that are deeply rooted in their emotions—memories not only of people but also of cities.

## THE CITY AND WEAVING

In my earlier attempts, I tried to capture my emotions and memories within the city. In doing so, I found myself focusing on the city's streets as both its lifeblood and its symbol. Streets are, in a sense, the source of the city's vitality. So, I narrowed my attention from the city as a whole to its streets.

Looking at the urban texture, it visually resembles an intricately crafted fabric. Imagine the city as a grand tapestry, with each thread representing a part of urban life. Just as threads intertwine to form patterns and textures, the elements of the city structure merge to create a cohesive whole. Streets crisscross like woven threads, connecting neighborhoods and districts. Streets are to the city what warp and weft threads are to fabric. I envision "weaving" as a way to bridge distances between people and repair the gradually weakening emotional bond between people and the city.

Every bustling city center is interwoven with various elements that shape its character, function, and identity. This intricate network is what scholars refer to as the "urban fabric." To me, it's like a woven textile, with the city's physical, spatial, and social elements forming a tapestry that gives it a unique personality.



Unknown author, (2024) Urban Fabric of Mexico.

I then began to explore weaving, seeing the city's streets as the warp and weft, with memories as fine threads that intertwine to create a tapestry of shared memories between people and the city. Each street is a thread, carrying countless moments left by footsteps: the warm aroma of coffee in the early morning, hurried figures at dusk, a brief pause under the neon lights at night.

Memories weave through these streets, intersecting and gathering like fragments colliding within the framework of the city, ultimately forming an urban fabric dense with emotion.

In this woven city, every corner and alley hides stories, capturing familiar scenes and the warmth of human connections. The aroma from a corner cafe mingles with passing conversations, becoming indelible memories for those who stop there.

The dappled shadows of trees on pathways capture the passage of seasons, while graffiti on walls preserves the marks of time. Memories and streets converge at every intersection, like the warp and weft of handmade fabric, layered and overlapping, making the city vivid and multidimensional.

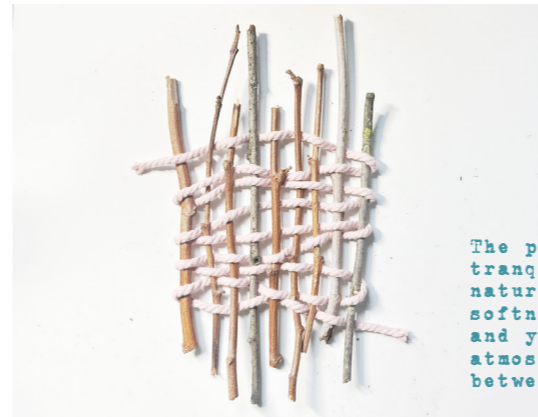
## OPENING UP STREET MEMORIES WITH WEAVING



Home is a place where moments of daily life come together. The diary holds my memories and emotions, while snack wrappers capture both solitary moments and gatherings with friends.

People's memories intersect on these streets, like threads that are soft yet inseparable; and so, the urban fabric grows richer and more complete. Streets are not just physical paths but emotional channels, weaving together past, present, and future into a tapestry that touches the heart.

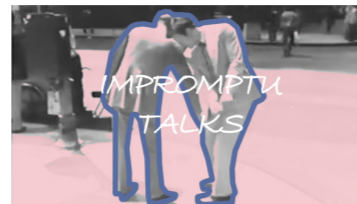
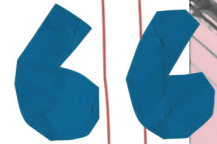
Therefore, I chose the places I visit most frequently in my living area—home, market, and park—and designated them as sites for emotional weaving. Using different materials to symbolize the unique qualities of each location, I incorporate the memories, scents, and textures of these places into the work. In this way, each woven piece presents a specific emotional atmosphere.



The park represents nature and tranquility. Branches symbolize nature, while yarn adds a sense of softness. The weaving of branches and yarn reflects the park's serene atmosphere and the connection between people and nature.



The market is a vibrant place full of life. Receipts record moments of transactions and everyday routines, while the green onions symbolize the market's freshness. The lightness of the receipts contrasts with the texture of the onions, as if the flow of people and sounds in the market are woven into it.



Whyte, W. (1988) The social life of small urban spaces. Available at: <https://www.dailymotion.com/video/x8mpdo3> [Accessed 05 Oct. 2024].

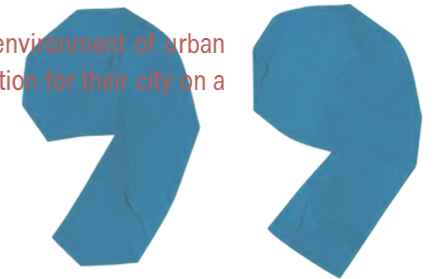
## CIVIC ACTIVATION

Civic Activation is a method of fostering citizen participation, interaction, and a sense of belonging in urban spaces through various strategies. It focuses on encouraging citizens to actively engage with and experience city life, enhancing their sense of belonging and interaction with urban spaces to create a vibrant and inclusive city environment. At its core,

Civic Activation aims to motivate citizens to use and engage with public spaces more actively through design, events, and human-centered urban spaces.

This concept emphasizes interaction and inclusivity in urban life, allowing people to naturally participate in public spaces in their daily lives and strengthening their emotional connection to their community and city.

The goal of Civic Activation is not only to improve the physical environment of urban spaces but also to foster a deeper sense of identification and affection for their city on a personal level.



2

3

4



In the street markets along city streets, I found the entry point for my design. Street markets are a microcosm of urban life and essential spaces for emotional exchange and cultural display.



## CHAPTER THREE STREET MARKET

RESEARCH AND DESIGN OF STREET MARKET



Through in-depth research on the structure, current status, and behaviors of people within these markets, I explore how to design a space that is both convenient and vibrant, making it a hub for emotional and social activities and providing people with rich interactive experiences.

# HISTORY OF STREET MARKET

The development of street markets has gone through several key stages. Originating in ancient times as places for barter and social interaction, markets became central to cities in Europe and the Middle East during the Middle Ages, blending commercial, cultural, and social functions.

The Age of Exploration brought global trade, introducing imported goods to markets and transforming them into cultural exchange hubs.

After the Industrial Revolution in the 19th century, large stores and supermarkets emerged, yet street markets retained forms like small goods stalls and flea markets.

In the late 20th century, a renewed focus on health and local products led to a market revival, giving rise to farmers' markets and creative fairs.

Entering the 21st century, markets have embraced digital promotion and cashless payments, with new formats like night markets and food festivals, evolving into diverse cultural platforms in modern cities.

# CURRENT SITUATION OF STREET MARKET IN LONDON



As of 2014, central London had a total of 43 street markets, providing diverse shopping, dining, and social experiences for residents and visitors.

Currently, the number of street markets across Greater London has grown to around 114, spread throughout various parts of the city and serving as vital elements of London's urban life and community interaction.



Wang,Y. (2024) History of street market.

Stalls can be divided into three basic types:

1. Food Carts: Mobile and suitable for streets and plazas;
2. On-Site Assembled Stalls: Built with lightweight, detachable structures that can be flexibly set up at event venues;
3. Environment-Integrated Stalls: Arranged using existing buildings or facilities, saving space.

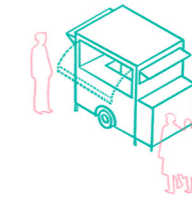
## TYPE OF STALL

photo



food truck type

stall

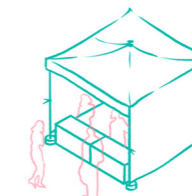


material

Not applicable  
(Ready-made vehicle)



stall assembled on site  
(ready-made tent)



Table



x2

Ready-made Tent



x1

Cloth



x1



stall assembled on site  
(build-up tent)



Steel pipe



x8

Pinch



x10

Tarpaulin



x1

Timber board



x1

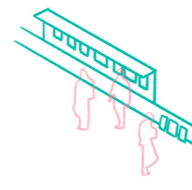
Cloth



x1



stall utilizing surrounding  
environment



Timber board



x6

Tarpaulin



x1

Wang,Y. (2024) Type of stall.unit2 research

	OTHER COMMERCIAL SPACES	STREET MARKET	STREET MARKET	OTHER STREET SPACES	
Atmosphere and Experience	with less interaction	with high interaction	Transaction and shopping	Leisure, entertainment, and socializing	Function and usage
Spatial Layout and Flexibility	Orderly and structured	Spontaneous and random	Busy and lively	Open, relaxed, and free	Atmosphere and vibrancy
Product variety and Diversity	Standardized	unique	Purpose-driven	Primarily non-transactional	Social Interaction and
Pricing and Purchase Experience	High efficiency	Direct and intimate	Multi-layered experience	Calm and comfortable	Visual and Sensory Experience
Emotional and Cultural Connection	Consumer relationship	Sense of belonging	Dense and concentrated	Free and casual	Spatial Layout and Fluidity
Sensory Experience	Relatively uniform	DIVERSE	Economic vitality with some traffic pressure	Enhances city aesthetics with positive effects	Impact on Urban Environment

### STREET MARKET & OTHER COMMERCIAL SPACES

Street markets are down-to-earth, diverse, and community-oriented, enhancing emotional connection and cultural belonging. Shopping malls and supermarkets, on the other hand, prioritize efficiency and comfort, offering a standardized shopping experience. The contrast between the two highlights how spatial design impacts lifestyle, shopping experience, and emotional connection in different ways.

### STREET MARKET & OTHER STREET SPACES

Street markets and other street spaces are similar in openness and interactivity, but differ in function and experience. Street markets focus on transactions, with a lively, compact atmosphere and a strong local character. Other street spaces, however, are geared towards leisure and socializing, offering a more relaxed and natural ambiance with greater freedom of movement. This contrast reflects the different roles of commercial and public functions, providing citizens with a diverse range of life experiences.

### REASONS FOR FOCUSING ON STREET MARKETS

# DISTRIBUTION OF STREET MARKETS

9. Inverness Street Market



location: Mahor center  
 opening hours: 9am-9pm  
 main commodity sold: souvenir/clothes  
 main visitor: tourist  
 length of market(m): 81  
 number of stalls: 17

2. Kingsland Market



location: Retail/Residential area  
 opening hours: 7.30am-6pm  
 main commodity sold: furniture, tools  
 main visitor: neighbour  
 length of market(m): 27  
 number of stalls: 9

location: Retail/Residential area  
 opening hours: 11am-4pm  
 main commodity sold: organic food  
 main visitor: neighbour  
 length of market(m): 111  
 number of stalls: 22

6. Chatsworth Road Market



7. Ridley Road Market



location: Major center  
 opening hours: 6am-6pm  
 main commodity sold: daily commodity  
 main visitor: neighbour  
 length of market(m): 342  
 number of stalls: 99

5. Golborne Road Market



location: Retail/Residential area  
 opening hours: 8am-7pm  
 main commodity sold: lunch  
 main visitor: neighbour  
 length of market(m): 60  
 number of stalls: 5

location: Retail/Residential area  
 opening hours: 8am-3pm  
 main commodity sold: clothes  
 main visitor: tourist/neighbour  
 length of market(m): 634  
 number of stalls: 102

1. Earlham Street Market



location: International Centre  
 opening hours: 9am-7pm  
 main commodity sold: souvenir  
 main visitor: tourist  
 length of market(m): 86  
 number of stalls: 5

4. Brick Lane Market



location: Retail/Residential area  
 opening hours: 8am-6pm  
 main commodity sold: daily commodity  
 main visitor: neighbour  
 length of market(m): 113  
 number of stalls: 17

2. Goodge Place Market



location: Retail/Office area  
 opening hours: 9am-8pm  
 main commodity sold: lunch  
 main visitor: office worker  
 length of market(m): 7  
 number of stalls: 4

10. Betesford Square Market



location: Retail/Residential area  
 opening hours: 9am-5pm  
 main commodity sold: daily commodity  
 main visitor: neighbour  
 length of market(m): n/a  
 number of stalls: 21

3. Berwick Street Market



Considering the criteria of number of traffic lanes, the road closure and the number of the stall rows, markets were categorized into 10 types.

Attending to the number of traffic lanes, there are four categories: pedestrian street, one-lane street (one-way), two-lane street (two-way) and four-lane street (two-way).

BANANA

TANDOORI MEATS

Black Pepper

Through the senses, information about the street's temperature, sounds, smells, and textures is captured, allowing participants to immerse themselves in the street and deepen their understanding and emotional connection to the space. This multisensory experience not only enhances the authenticity of observation but also adds a layer of humanized subtlety and perception to spatial observation. Thus, I recorded my sensory impressions of Ridley Road Market in two different seasons. Valuing bodily experience can foster a deeper emotional bond between people and the city.

### OLFACTORY DIARY

On a spring afternoon, Ridley Road Market is particularly vibrant under the sunlight. The air is filled not only with the sweet aroma of fresh fruits but also with the earthy scent of damp soil after a spring rain, bringing a refreshing, natural feel. Upon entering the market, the first scent to greet you is the fragrance of citrus-orange and lemon aromas especially noticeable in the sunlight, carrying a crisp sweetness with a hint of tartness that invites a deep breath.

As you move further in, near the fruit stalls, the sweet smell of strawberries grows stronger, blending with the fragrance of raspberries, as if you've stepped into a spring orchard. Occasionally, you catch the subtle scent of fresh peaches and plums, evoking the softness and juiciness of newly ripened fruits. To the left, the flower stall exudes the enchanting scents of lavender and roses, tinged with a hint of earthiness, as if freshly picked from a field and still carrying the morning dew of spring.

Continuing forward, the aroma of freshly baked bread fills the air. The nearby bakery owner is busy placing trays of warm bread in the display case. The toasty, caramelized scent mingles in the air, drawing people to stop and savor. When a gentle breeze blows, these aromas intertwine—the sweetness of fruits, the floral fragrance, and the warm bread scent—creating a unique market atmosphere in spring, tender and vibrant. Occasionally, a faint sea breeze drifts over from the fish stall, though it is overpowered by the rich fruit and bread scents, adding a subtle freshness to the spring ambiance.

03.26.2024

In the cool autumn breeze, Ridley Road Market feels quiet yet warm in the early morning, with the air filled with the scent of ripe fruit and dry leaves, carrying a touch of hazy autumnal charm. As you step into the market, the sweet aroma of apples and the slight tartness of pears greet you, bringing the comforting sense of a bountiful harvest. The rich fragrance of apples mingles with the softer sweetness of pears, as if sharing the joy of the season's abundance.

Further in, the scent of bananas becomes more prominent. Unlike the freshness of other fruits, ripe bananas carry a subtle hint of sweetness with a mellow, almost boozy aroma, adding a touch of warmth to the cool autumn air. To the right, a stall selling roasted chestnuts fills the area with steamy warmth, the sweet, nutty scent especially comforting in the crisp air. This aroma evokes memories of late autumn warmth, tempting everyone to pause and buy a bag of chestnuts to warm their hands.

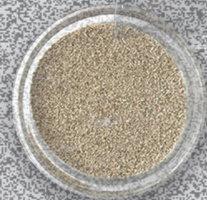
As you walk deeper, the scent of freshly baked bread fills the air, carrying a toasty aroma with hints of wheat and caramel, drawing customers in. The fragrance of the bread is particularly intense in the autumn market, dispelling the chill and bringing a cozy warmth to passersby. Not far from there, a deli emits the rich scents of roasted meats and spices, with rosemary and pepper blending with the savory smell of cooked meat, making mouths water.

Although the weather is cooling down, the fish stall's scent is much milder than in the summer, with the smell of seafood softened by the crisp air, adding a subtle freshness as if bringing a hint of the seaside. At the end of the market, steaming food stalls on either side offer a variety of snacks. The aromas of fried dumplings and sweet almonds mingle with roasted meats in the air, adding a touch of warmth and community spirit to this autumnal market scene.

05.10.2024

coriander

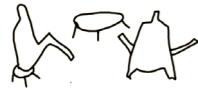
POTATO



saundhya

# BEHAVIOUR ANALYSIS

REST



STAND



SIT



LIE

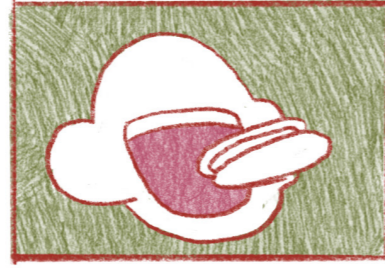


LEAN

SOCIAL



TALK



EAT



PLAY



SHOPPING

GATHERING



MOVIE



PERFORMANCE

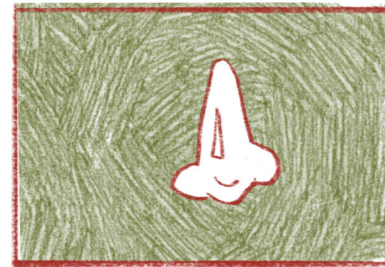


MAGIC



DANCE

PHYSICAL SENSORY EXPERIENCE



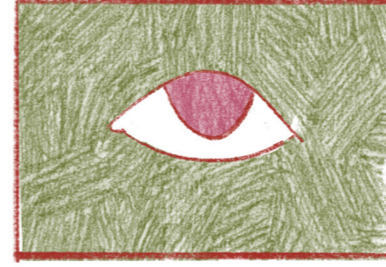
NOSE



HAND



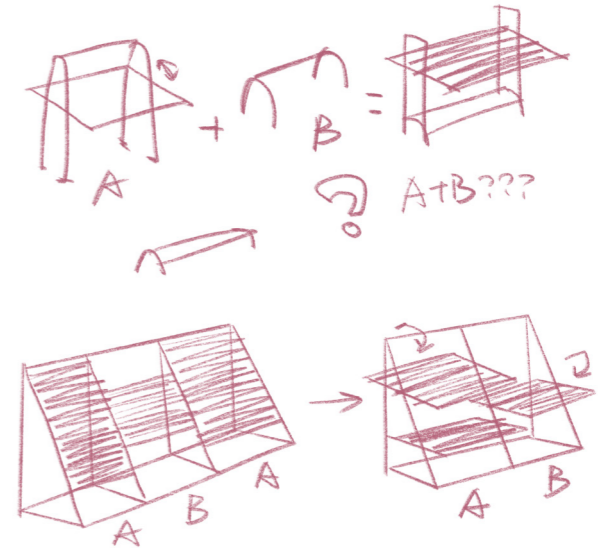
EAR



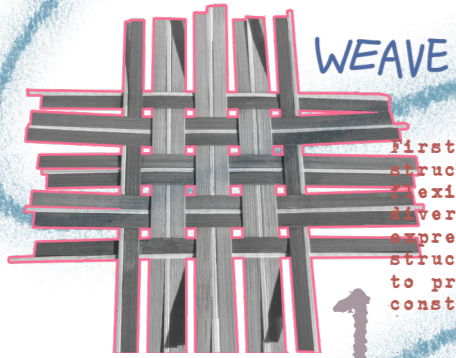
EYE

After closely observing the chosen site, I noticed many interesting behaviors displayed by people there. The market is not just a place for shopping; it has become a space for interaction, socializing, and even relaxation. Its layout and design attract people of different ages and backgrounds, giving it a function that goes far beyond just shopping. Small stalls, rest areas, and even street performances within the market provide opportunities for chance encounters and social interactions. Therefore, I analyzed the range of functions that could emerge within this space, aiming to use design to better inspire and guide people's participation, making the market a public space with true emotional connection.

## DESIGN GOAL

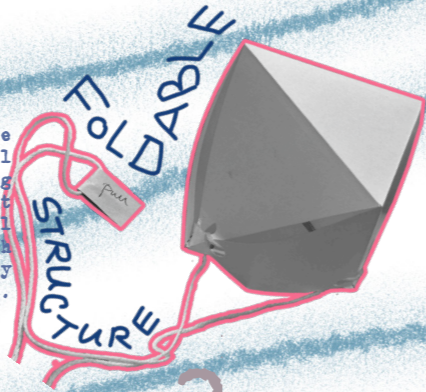


Given the flexible and adaptable nature of small urban spaces like street markets, I plan to design a medium-to-small structure with quick assembly and disassembly capabilities to suit various scenarios. This structure can be conveniently reconfigured in a short time according to the specific needs of each event, allowing for greater versatility and adaptability.

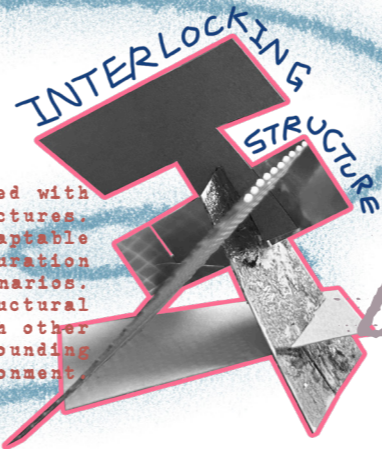


First, I experimented with woven structures. This method, known for its flexibility and adaptability, meets diverse site requirements and offers rich expressive potential. However, it lacks structural support, making it challenging to provide sufficient stability for larger constructions.

I then investigated foldable structures, which allow rapid spatial reconfiguration through folding and unfolding, offering significant flexibility. However, the practical challenges of assembly and the high material demand limit its feasibility on a large scale.



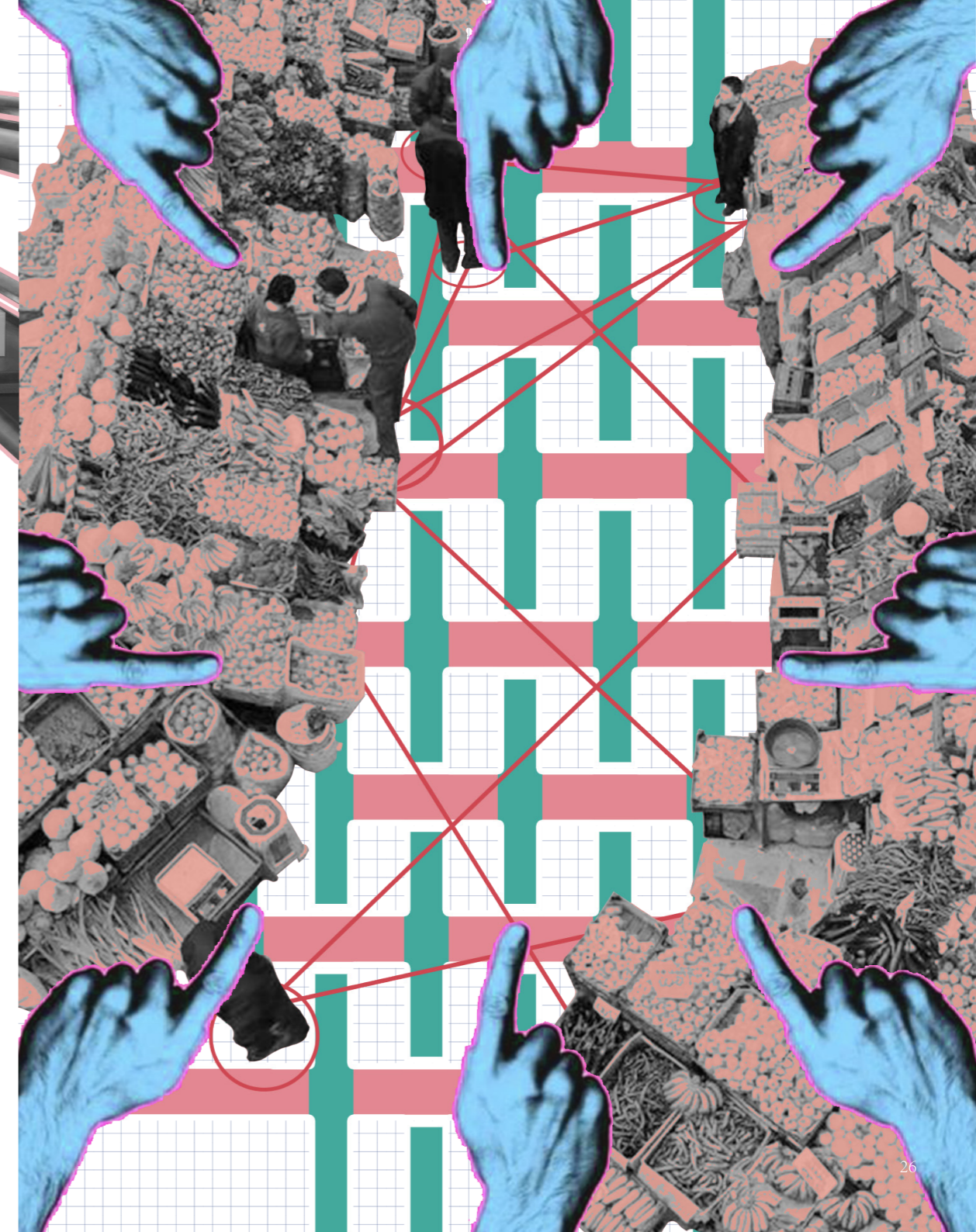
Next, I explored scaffolding. The standardized design of scaffolding makes it easy to assemble and disassemble, providing adequate structural support. However, in practice, the fixed nature of scaffolding limits detailed design options and diverse forms.



Finally, I experimented with modular, interlocking structures. This design is highly adaptable and allows easy reconfiguration across multiple activity scenarios. However, its strong structural form may lack cohesion with other materials and the surrounding environment.

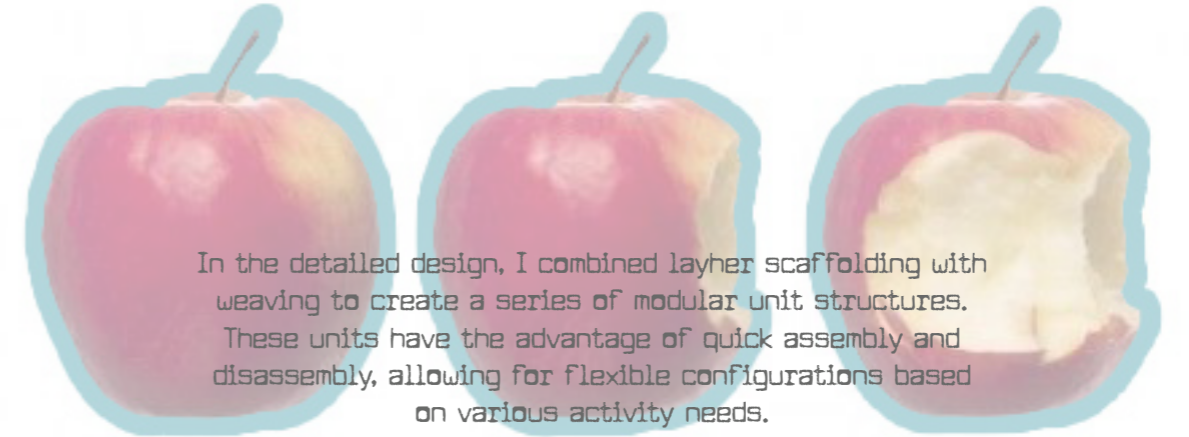


Ultimately, I chose a combination of woven structures and layer scaffolding. This combination offers both flexibility and convenience, and its similarity to the materials used in market stalls enhances cohesion with the site. This design allows for quick reconfiguration based on activity needs and supports the potential for interconnecting individual units, further encouraging citizens to participate in designing and assembling the space.



3

4



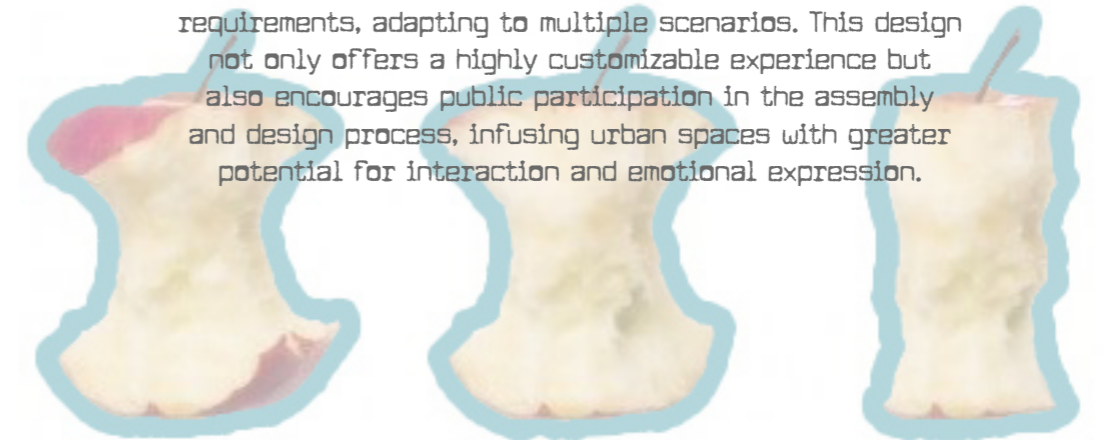
In the detailed design, I combined layer scaffolding with weaving to create a series of modular unit structures. These units have the advantage of quick assembly and disassembly, allowing for flexible configurations based on various activity needs.



## CHAPTER FOUR SPECIFIC DESIGN

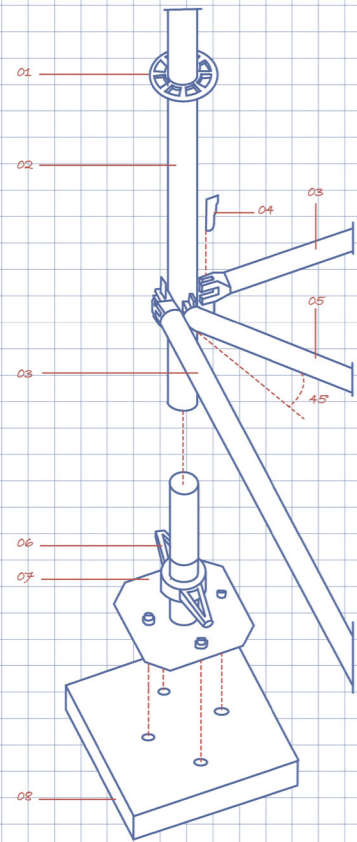
### MODULAR UNITS AND FLEXIBLE COMBINATIONS

To support this, I developed a module catalog from which users can select different unit modules and arrange them freely according to personal or event requirements, adapting to multiple scenarios. This design not only offers a highly customizable experience but also encourages public participation in the assembly and design process, infusing urban spaces with greater potential for interaction and emotional expression.

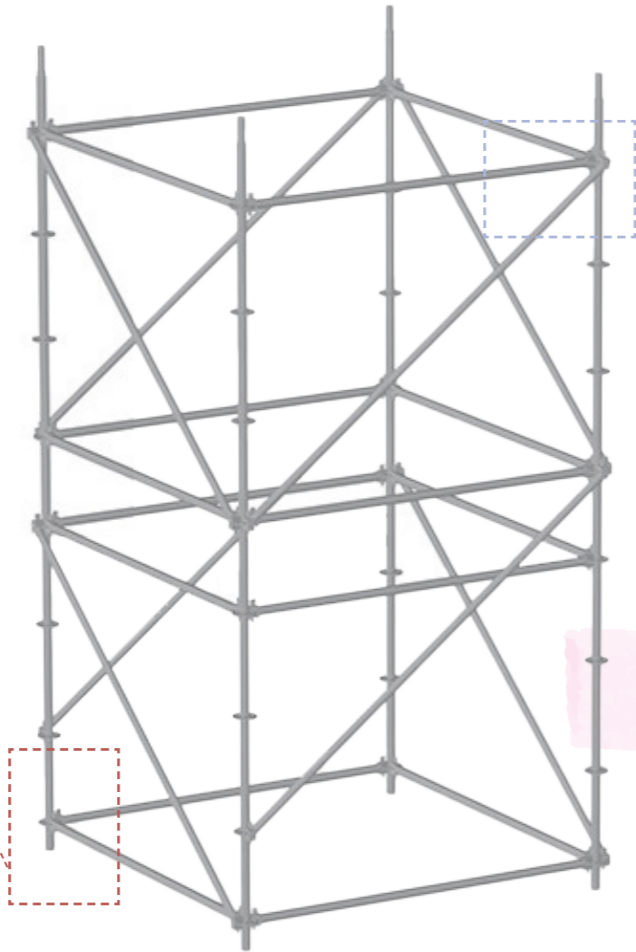
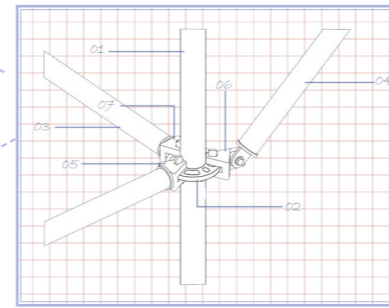
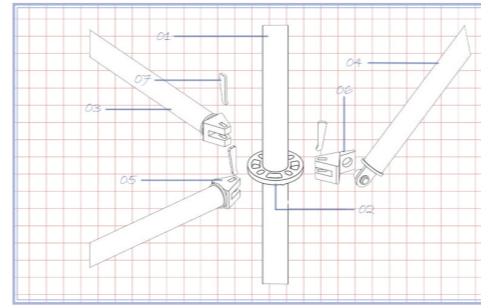


## LAYER SCAFFOLD DETAILS

- 01: DISCS
- 02: POST
- 03: CROSS-BAR
- 04: ADAPTER PLUG OF CROSS BAR
- 05: LOCATING LEVER
- 06: ADJUSTING NUT
- 07: ADJUSTABLE BASE
- 08: SCREW JACK BASE

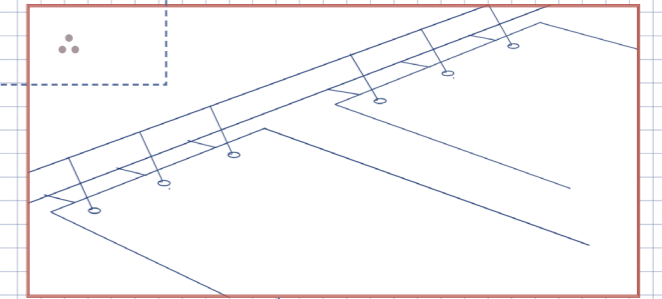
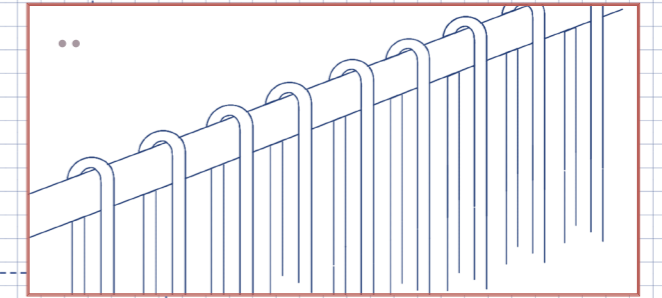
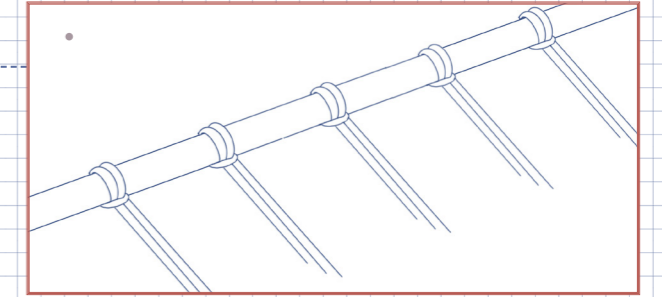
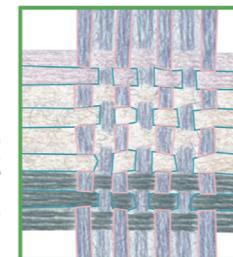
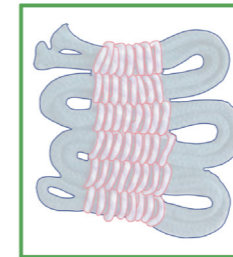
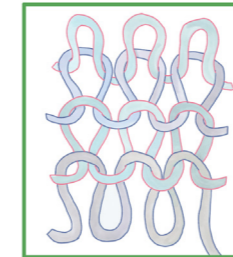
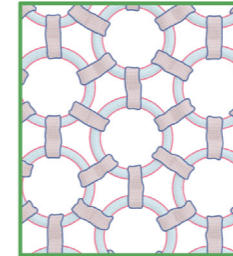
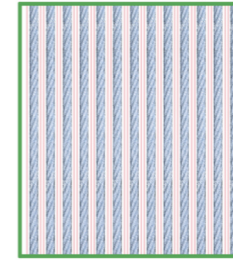


- 01: POST
  - 02: DISCS
  - 03: CROSS-BAR
  - 04: DIAGONAL BRACE
  - 05: ADAPTER PLUG OF CROSS BAR
  - 06: ADAPTER PLUG OF DIAGONAL BRACE
  - 07: WEDGE PIN
- ## JOINT DETAILS



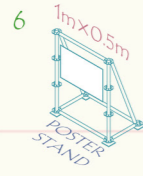
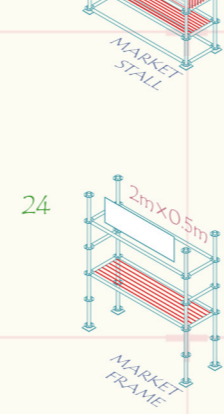
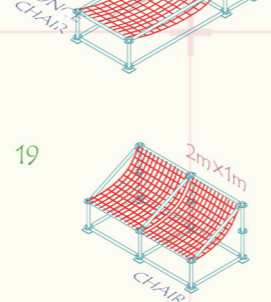
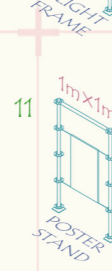
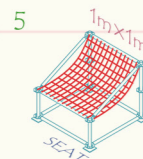
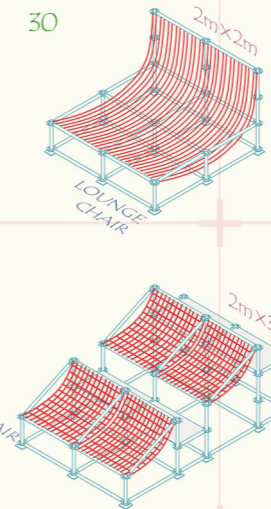
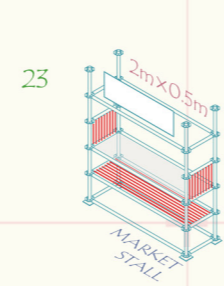
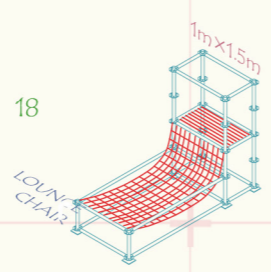
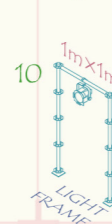
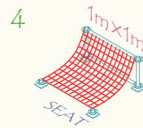
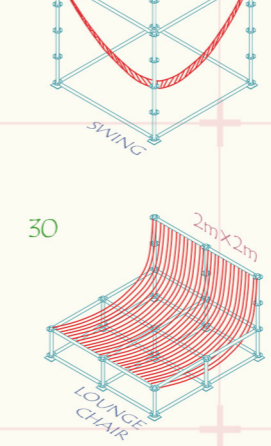
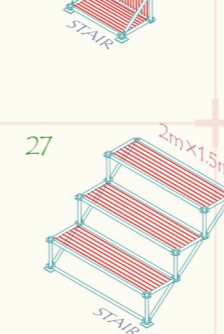
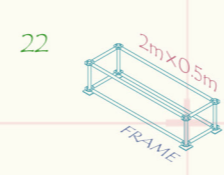
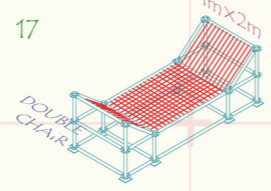
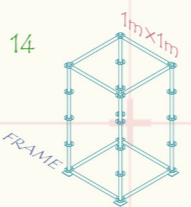
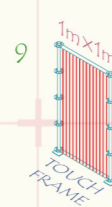
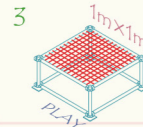
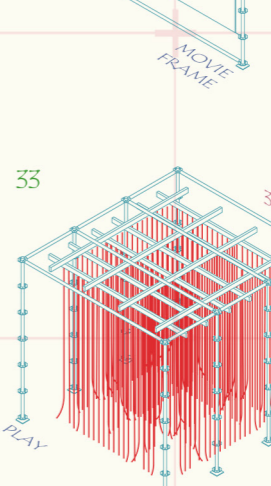
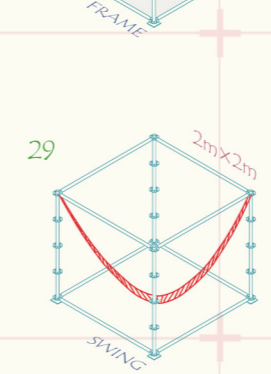
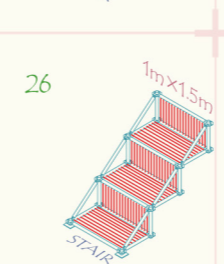
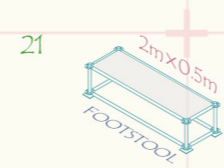
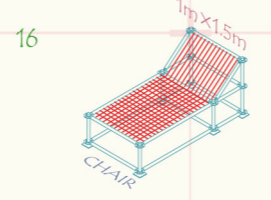
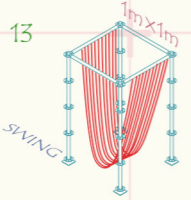
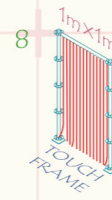
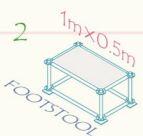
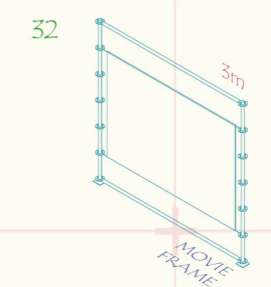
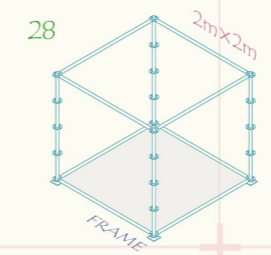
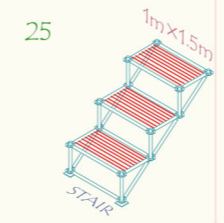
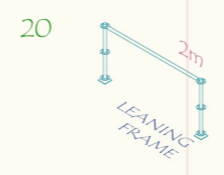
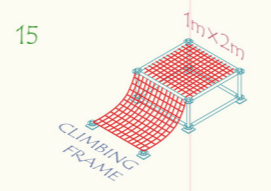
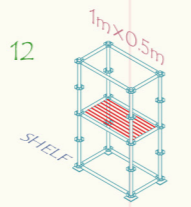
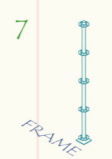
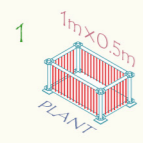
By using a layer scaffold system, this project achieves a flexible, lightweight, and quickly assembled medium-to-small structure. It not only meets the diverse needs of different event scenarios but also ensures ease of assembly and structural stability. This allows urban public spaces to be set up and cleared in a short time, enhancing the adaptability and functionality of the space.

## WEAVING METHOD

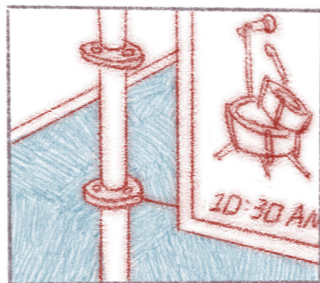
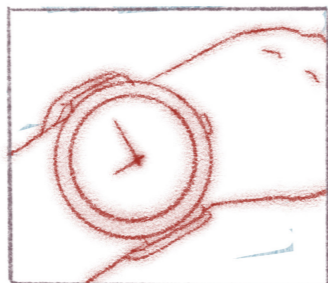
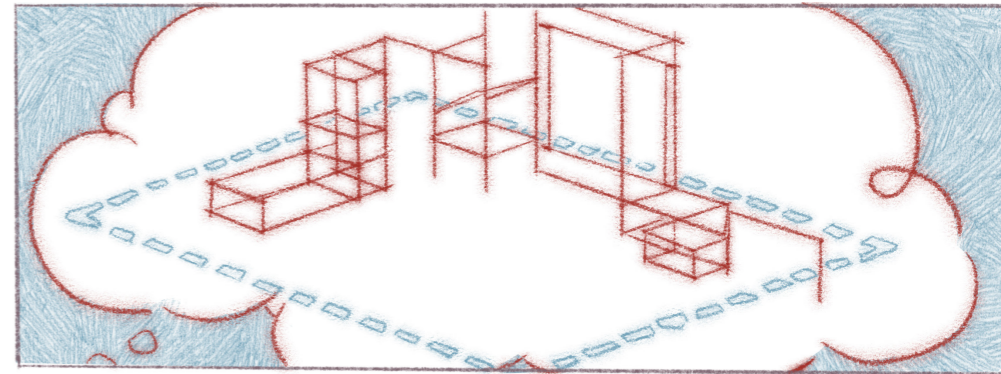
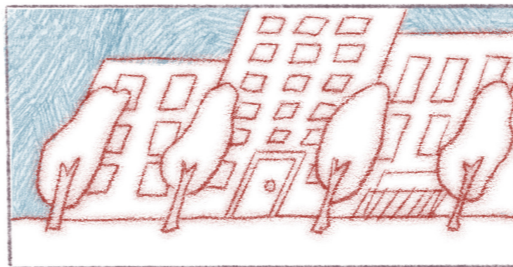
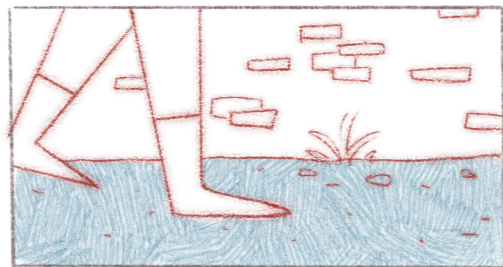
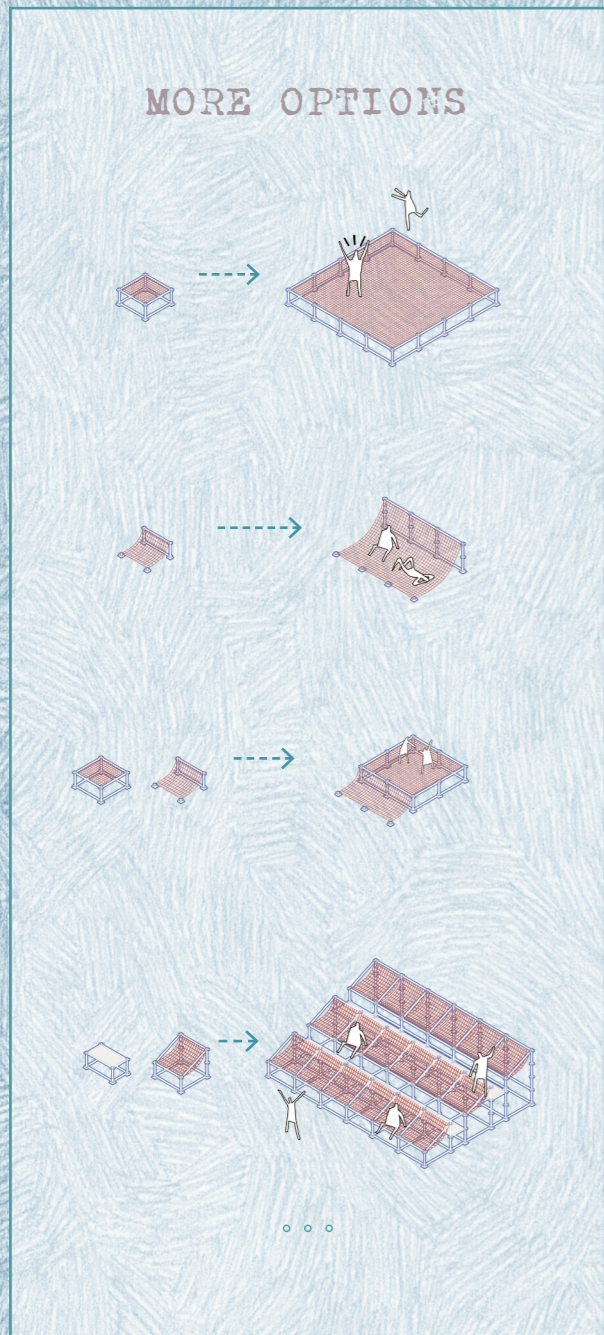


With "weaving" as the concept, five weaving techniques were combined with the layer scaffold assembly to achieve a flexible and versatile spatial design. Each weaving technique gives the structure a unique form and function, adapting to different scenario needs and enhancing both the expressiveness and practicality of the space.

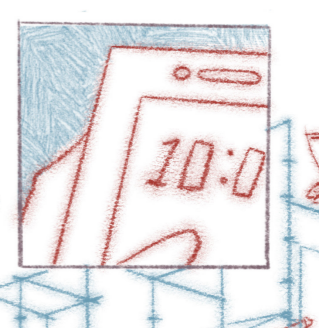
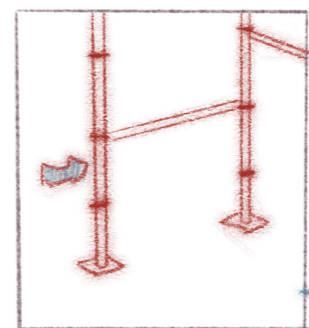
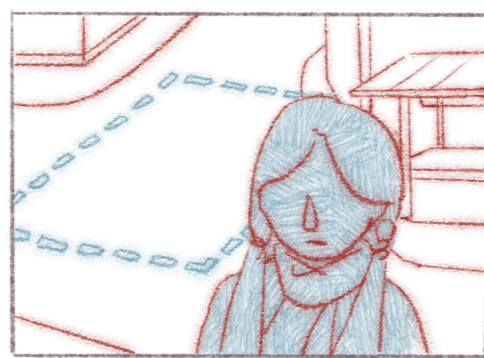
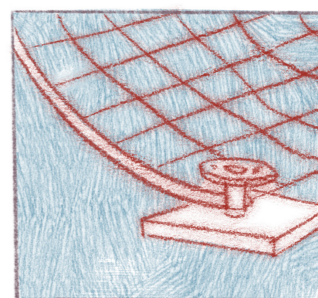
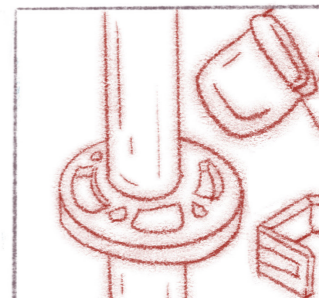
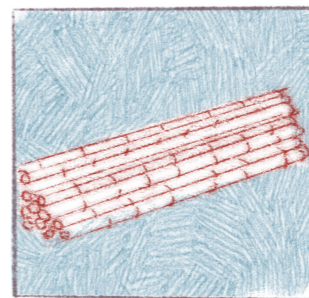
USER MANUAL



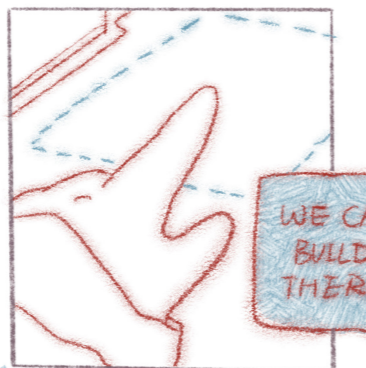
# MORE OPTIONS



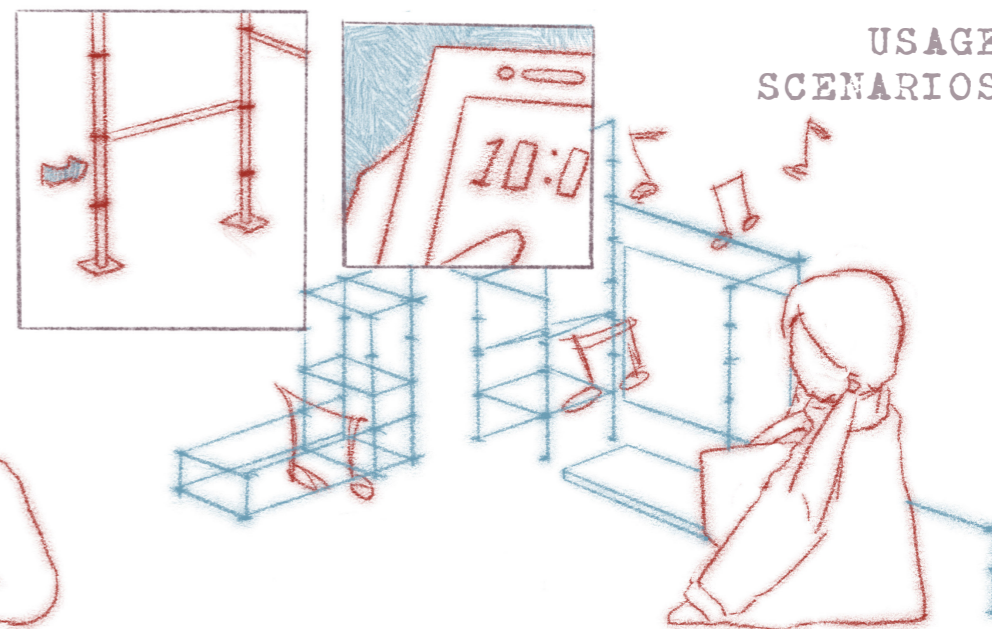
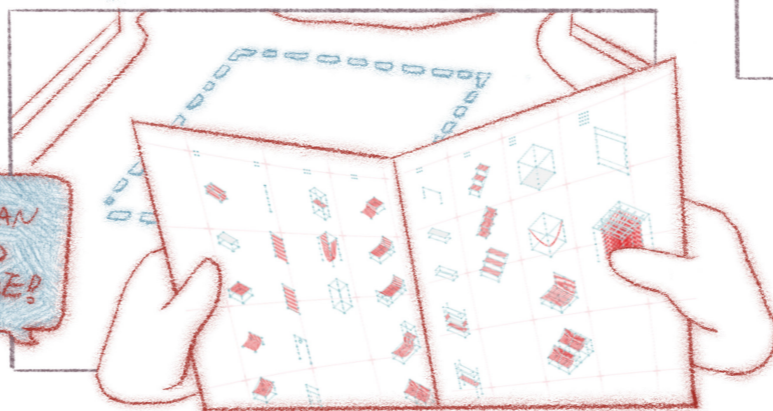
LET'S  
Join  
them



# USAGE SCENARIOS



WE CAN  
BUILD  
THERE!



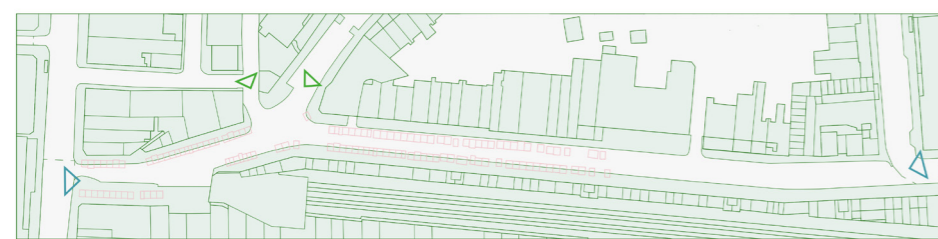
# RIDLEY ROAD MARKET

MEDIUM SIZE



## PLAN

Ridley Road Market is a large street market primarily focused on meeting the daily needs of nearby residents. Two small open spaces in the middle and at the end of the market naturally serve as gathering areas. My design makes full use of these spaces, transforming them into open social areas with lightweight installations that encourage people to pause and interact while shopping. The mini plaza installation in the middle provides a resting space for people to connect, while the installation at the end offers a place for continued interaction after shopping, making the market not only a place for purchasing goods but also a social hub for communication and sharing.



ENTRANCE ANALYSIS

- Main entrance ●
- Secondary entrance ●



FLOW ANALYSIS

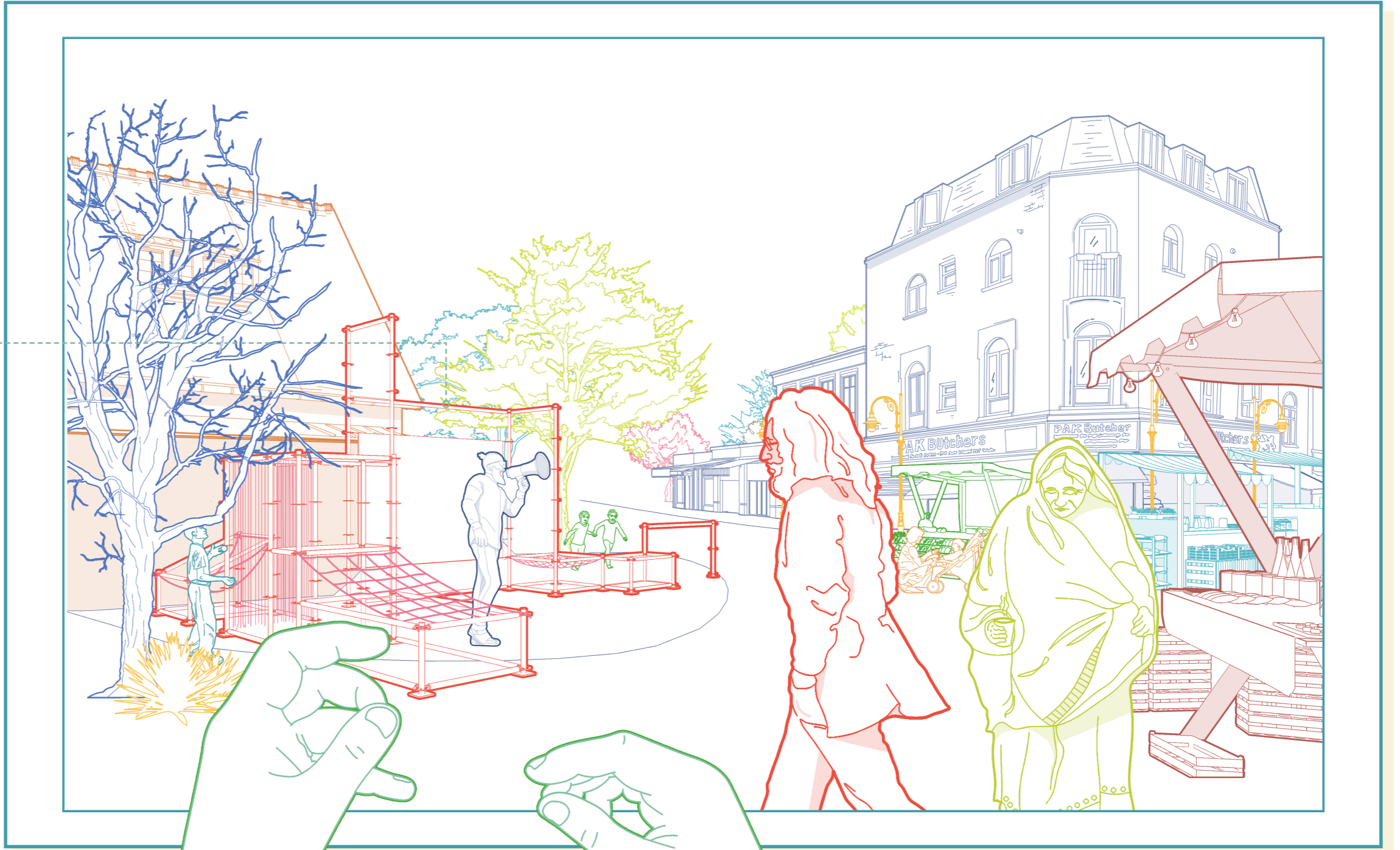
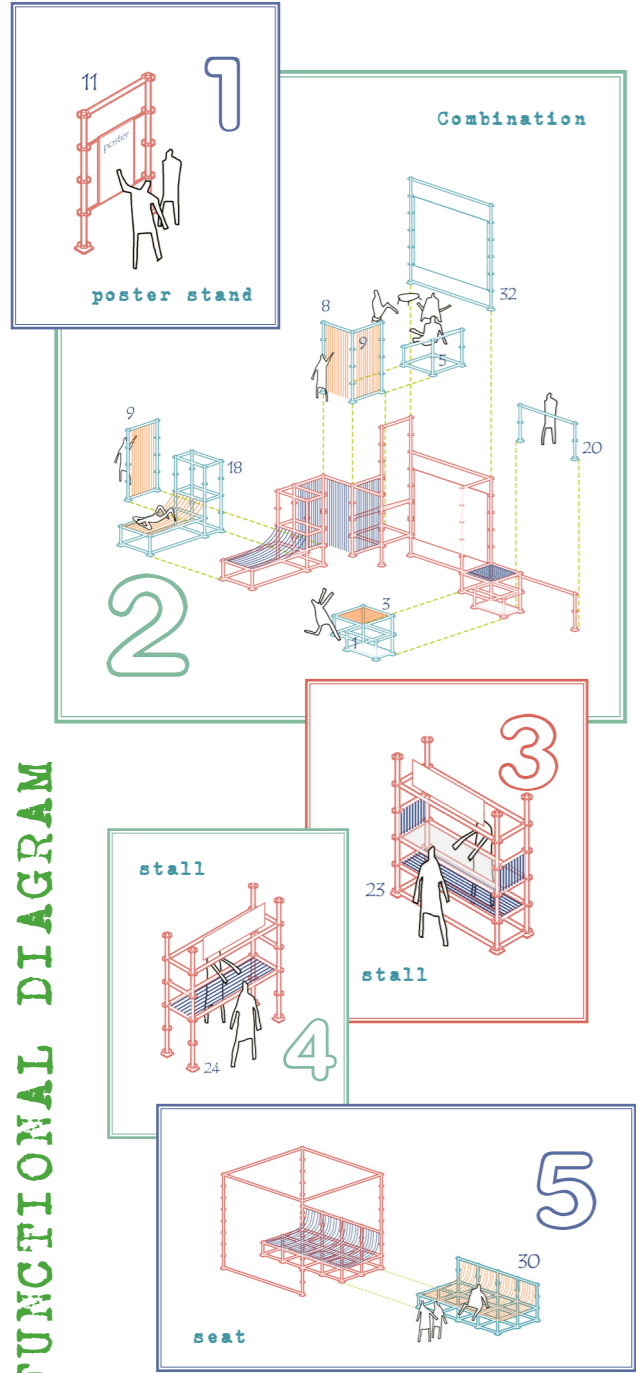
- Pedestrian route ●
- Vehicle route ●

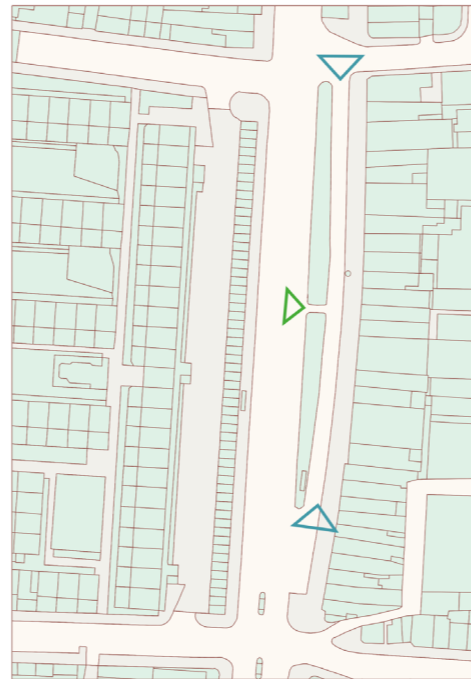


SURROUNDING FUNCTION ANALYSIS

- Road ●
- Metro station ●
- Business area ●
- Residential area ●
- Primary school ●

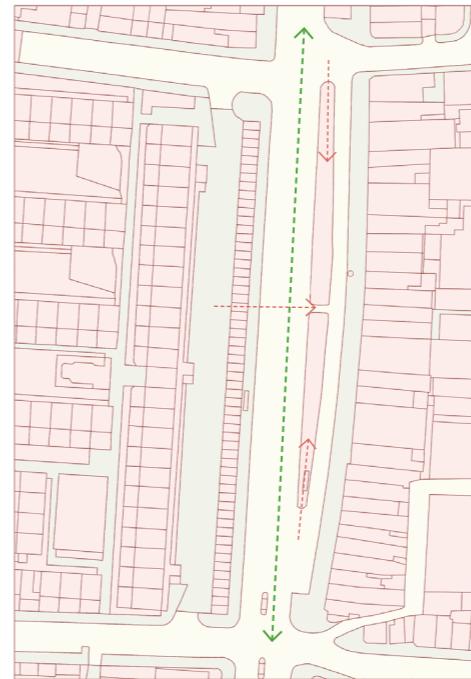
FUNCTIONAL DIAGRAM





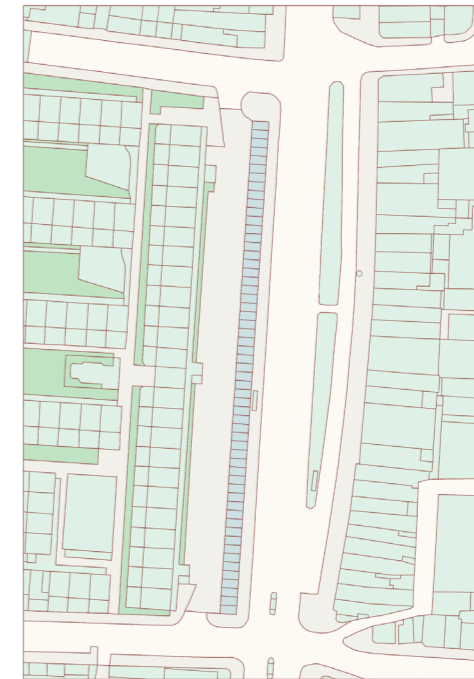
**ENTRANCE ANALYSIS**

- Main entrance
- Secondary entrance



**FLOW ANALYSIS**

- Pedestrian route
- Vehicle route

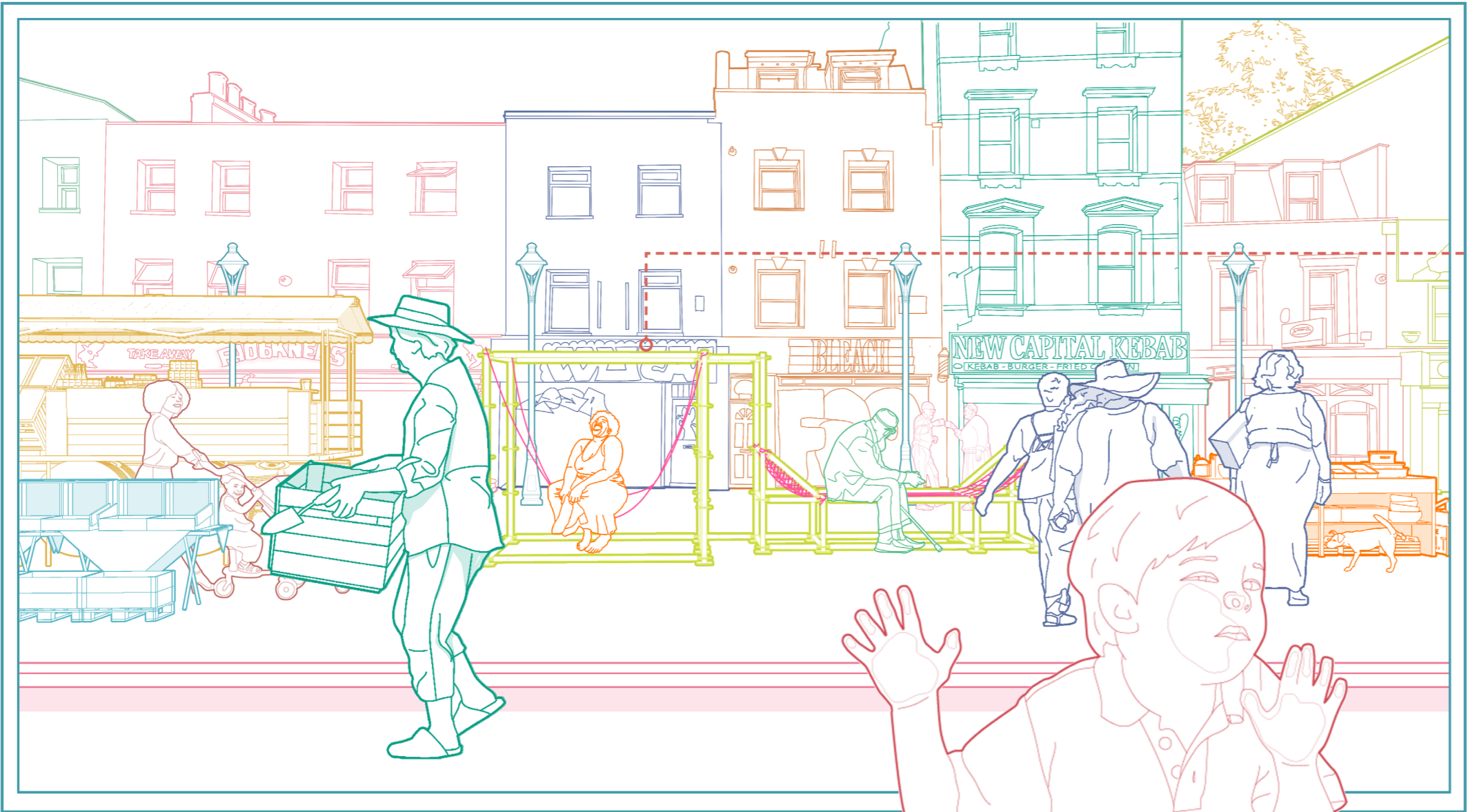


**SURROUNDING FUNCTION ANALYSIS**

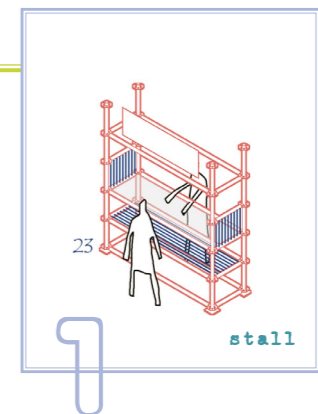
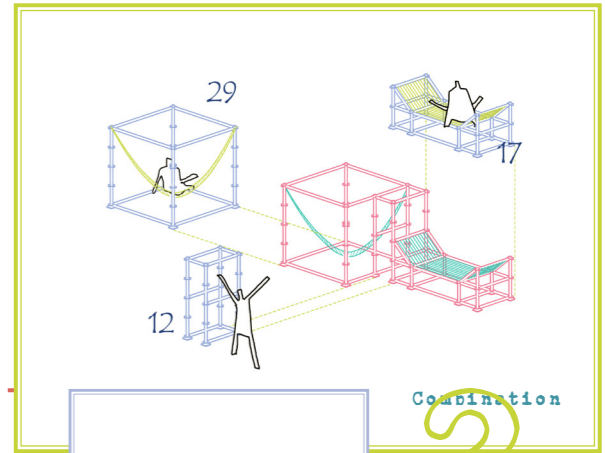
- Open space
- Road
- Parking area
- Greenbelt
- Business area

**SMALL SIZE**  
**KINGSLAND MARKET**

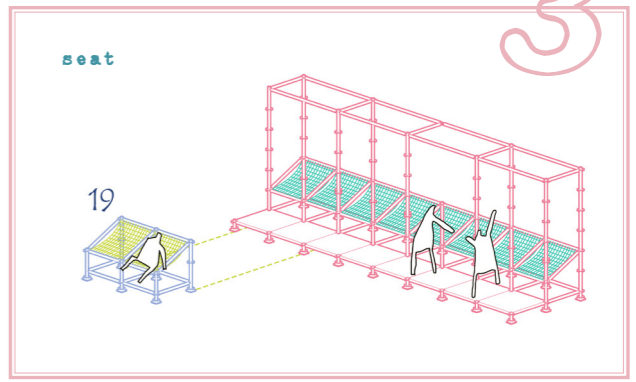
Kingsland Market is only open on Saturdays, serving as a temporary unloading area for nearby shops during the rest of the week. Given the limited scope for spatial intervention, my design focuses on the entrance and exit areas of the market, serving as installations to guide and attract the public. The installation at the entrance draws people into the market while providing a brief resting and gathering space for visitors and shoppers. The exit design offers a space for people to linger and interact after the market closes, encouraging more social exchange and enhancing the social potential of this small market.



**FUNCTIONAL DIAGRAM**



Combination  
**2**



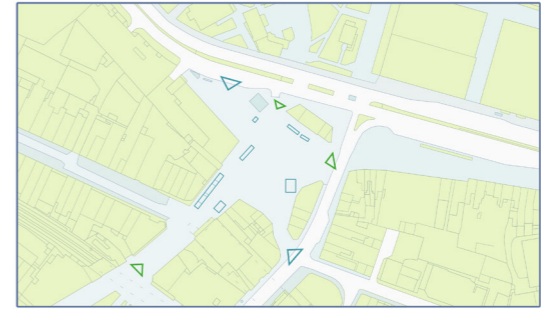
**3**

# BERESFORD SQUARE MARKET

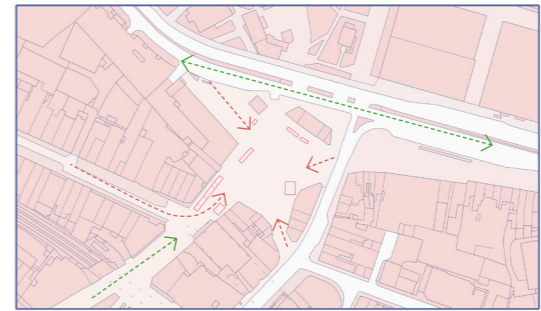


## LARGE SIZE

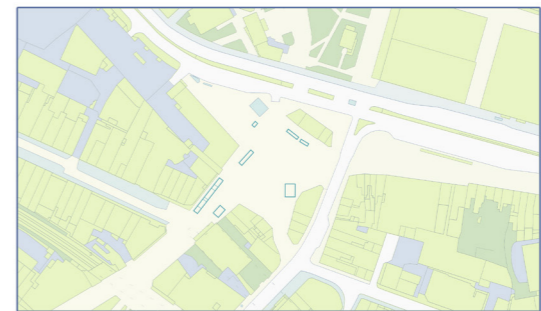
Beresford Market is the largest of the selected sites, with a spacious area that provides ample space for utilization. The design here employs multiple modular installations placed in different areas of the square to meet various functional needs. In the corners of the square, mobile units offer seating, shade, and spaces for interaction, allowing people to choose different activity areas based on their needs. At the center of the square, multiple unit modules combine to form a composite space, serving as a hub for socializing, resting, and activities. This design not only provides shoppers with diverse functional options but also enhances the vibrancy of the space, making Beresford Square Market a multifunctional center of community life.



- Main entrance
- Secondary entrance



- Pedestrian route
- Vehicle route



- Open space
- Road
- Business area
- Greenbelt
- Square

ENTRANCE ANALYSIS

FLOW ANALYSIS

SURROUNDING FUNCTION ANALYSIS

# FUNCTIONAL DIAGRAM

