



Echoes

of

Peckham

A Digital Journey
through Heritage

Introduction

"In multispace we are both the truest expression of ourselves and a single point in an incomprehensibly large and constantly growing dataset." (Owen Hopkins)¹

Peckham has always been vibrant throughout the long course of time, with its history dating back to before the 1700s. When we hope that more people will take notice of and become interested in the history of Peckham, a stable entity with one single narrative can not satisfy us anymore. Stories happened in Peckham are always having different layers, references, and contexts. Since the Information Age, different people connect on the Internet, and put their daily lives on social media, and the recording of Peckham's history entered a new phase of public participation. Cyberspace has long integrated into our communities. Multispace is the hybrid space the internet advent has created. It is the space that

comes into being through the crossover between the physical and the digital worlds. In this project, I will show how to document and recreate the history of Peckham's heritage within Multispace, as well as the benefits and challenges it brings.

1. Hopkins, O. (2023) 'Architects in Multispace', *Architectural Design*, 93(06), pp. 6-13.

Contents

Introduction	1
A Prequel	5
The Digital Realm	11
<i>Immersive Visual Zone</i>	13
<i>Interactive AR Hub</i>	31
The Physical Dimension	35

"All multispaces are equally defined by the simultaneity of the physical and the digital" (Owen Hopkins)



A Prequel

Why establish a Peckham's heritage database?

Triggered Reason: A campaign demands a development right for Peckham & its people that is sponsored and enforced by Aylesham Community Action.

TAKE ACTION NOW

FOR SOCIAL HOUSING FOR GREEN SPACE AGAINST HIGH-RISE PECKHAM STOP THE MEGA DEVELOPMENT

PROPOSED TALLEST TOWERS

We are Aylesham Community Action

We are campaigning for an Aylesham development that is public space being properly protected as that which is a community asset, and a right for Peckham's citizens.

The planning application is essential to begin the process of stopping why this development is the #RightForPeckham

WE MUST ACT NOW

to show why this development is the #RightForPeckham

Things you can do:

- Sign up to our mailing list to get the information from ACA after it is available. Email: ayleshamcommunityaction@gmail.com
- Join our next public meeting on **THURS 26 SEPTEMBER, 6-7pm** for 7a of Peckham Levels - all welcome
- Follow us on social media @ACApeckham
- Post and share on social media
- See the plans on the developer's website

All links at www.linktr.ee/aca/peckham

Aylesham Community Action

WE DEMAND A DEVELOPMENT THAT'S RIGHT FOR PECKHAM AND ITS PEOPLE

The plans for a massive redevelopment of Peckham's Aylesham Centre includes total demolition of the site to make way for 18 new buildings reaching 20 stories creating 600+ homes, 850 of which will be affordable. The proposed plans to, worst work and MUST CANCEL.

Join our public meeting at Peckham Levels - all welcome **Thurs 26 September, 6.30pm for 7pm**

The planning application is essential to begin the process of stopping why this development is the #RightForPeckham

JOIN THE ACA MAILING LIST

Email: ayleshamcommunityaction@gmail.com

Work our address: www.ayleshamcommunityaction.org.uk

Aylesham Community Action

PECKHAM VISION

Community action for the South Centre

Peckham Vision is a community group of local residents and businesses who care about the future of Peckham. We are working to ensure that the development of the site is in the best interests of the community and the town.

START WITH EXISTING BUILDINGS & PEOPLE

We are not sure the full 11 story tall development is a good idea. We are working with local people and groups to understand what they think about the development and what they would like to see instead.

HOW TO KEEP IN TOUCH

Join the mailing list: ayleshamcommunityaction@gmail.com

#RightForPeckham

PECKHAM HERITAGE

The Peckham Heritage Project is a community-led initiative to create a digital heritage database for the Peckham area. The project aims to collect, digitise and share information about the buildings, streets and people that have shaped the area's history and character.

The Peckham Heritage Project is a community-led initiative to create a digital heritage database for the Peckham area. The project aims to collect, digitise and share information about the buildings, streets and people that have shaped the area's history and character.

#PeckhamHeritage

Aylesham Community Action

WE DEMAND AN AYLESHAM DEVELOPMENT THAT'S RIGHT FOR PECKHAM AND ITS PEOPLE

- A development that meets local needs
- For local people to be properly consulted
- A plan that fits with the character of the area

Join our public meeting at Peckham Levels **Thurs 26 September, 6.30pm**

The planning application is essential to begin the process of stopping why this development is the #RightForPeckham

JOIN THE ACA MAILING LIST

Email: ayleshamcommunityaction@gmail.com

Aylesham Community Action

#RightForPeckham

PECKHAM NEEDS YOU!

STOP THE MEGA DEVELOPMENT!

JOIN THE PROTEST

25th June 6pm-7:30pm

Aylesham Centre, Rye Lane

Aylesham Community Action

THE AYLESHAM CENTRE

COMMUNITY INFORMATION SESSION

WEDNESDAY 24TH APRIL

6:00 - 7:30 PM

UNIT 15 AYLESHAM CENTRE

PECKHAM RYE LN, SE15 5EW

For questions about the meeting contact the developer's public relations officer (Peckham Centre Consultation Team)

TAKE ACTION NOW

#RightForPeckham

2016-2019

Owners of the site Blackrock, and developer Tiger hosted a consultation process over their emerging proposals for the Aylesham. They released a masterplan for the site which includes up to 1,000 homes, and three blocks of tall towers of heights including eight, eleven and twenty storeys high.

2020

Aylesham Community Action (ACA) was founded by a group of local residents. There were huge concerns over the Blackrock/Tiger's plan having a huge impact on thousands of residents and hundreds of local businesses and it would challenge the character of the local economy and the town centre.

May 2021

ACA began their recurring stall outside the Aylesham Centre entrance to raise awareness and find out what locals think about development on the site.

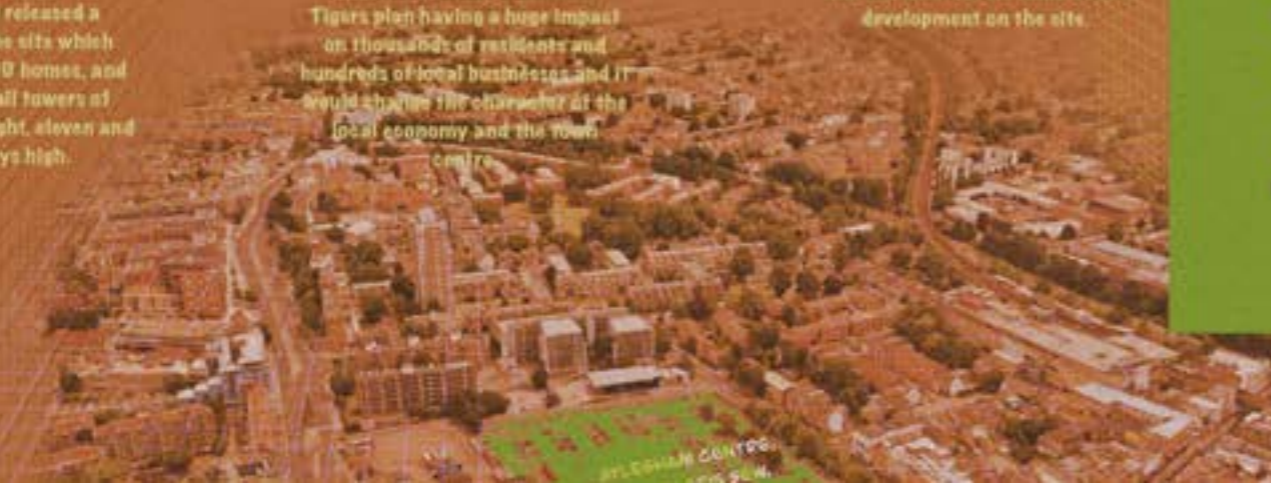
November 2022

Berkeley Homes launch their community engagement process on the first masterplan to understand the local needs, aspirations and priorities of local people, local businesses and groups, to inform future plans for the site. They host some pop-up events launch an official website with surveys, and send out digital and hard copy materials.

ACA produced a map for locals to take a self-guided tour of the site to get re-acquainted with the site and understand the impact of development in the town centre.

August 2024

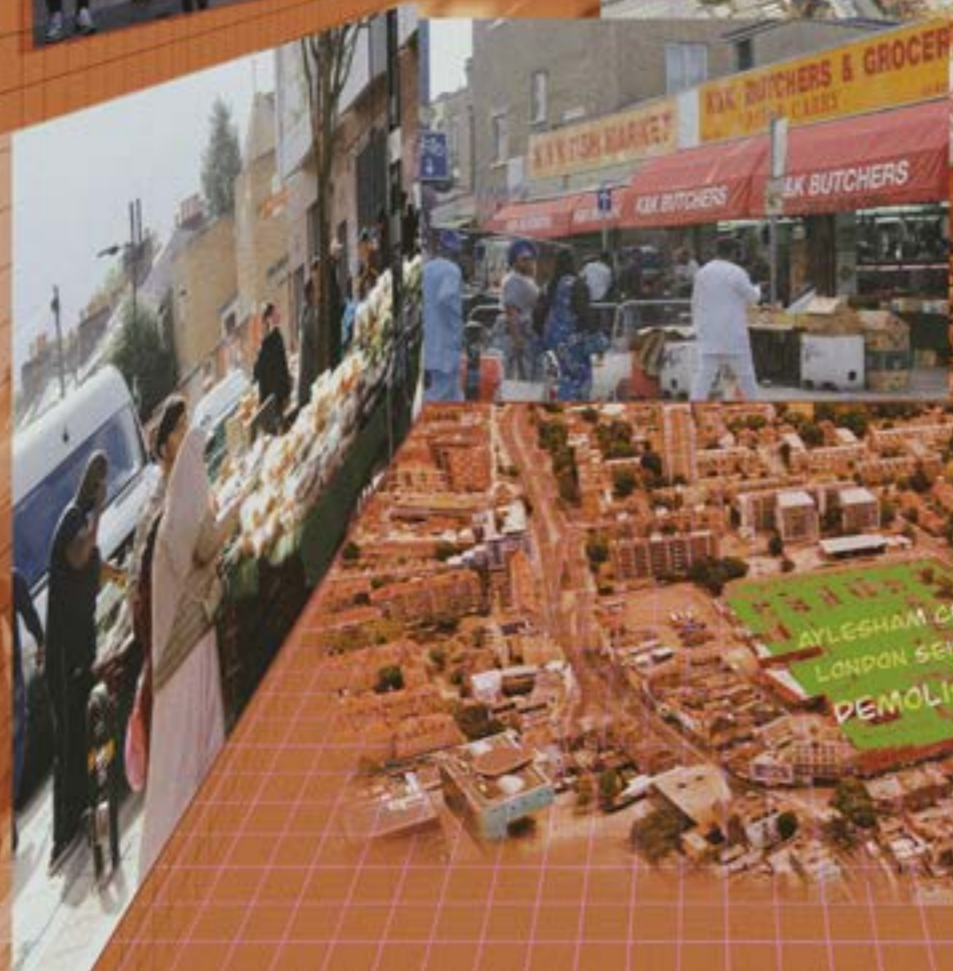
Berkeley Homes submit a planning application for the Aylesham Site. Southwark council validate this application and it goes live on the council's planning portal.



FULL OF LOCAL CHARACTERISTICS
PECKHAM IN PEOPLE'S MEMORY



MODERN LIFESTYLE, HOMOGENIZATION
PECKHAM LOOKS LIKE IN THE FUTURE





The Digital Realm

— Crafting the Virtual Layers of Heritage



part 1

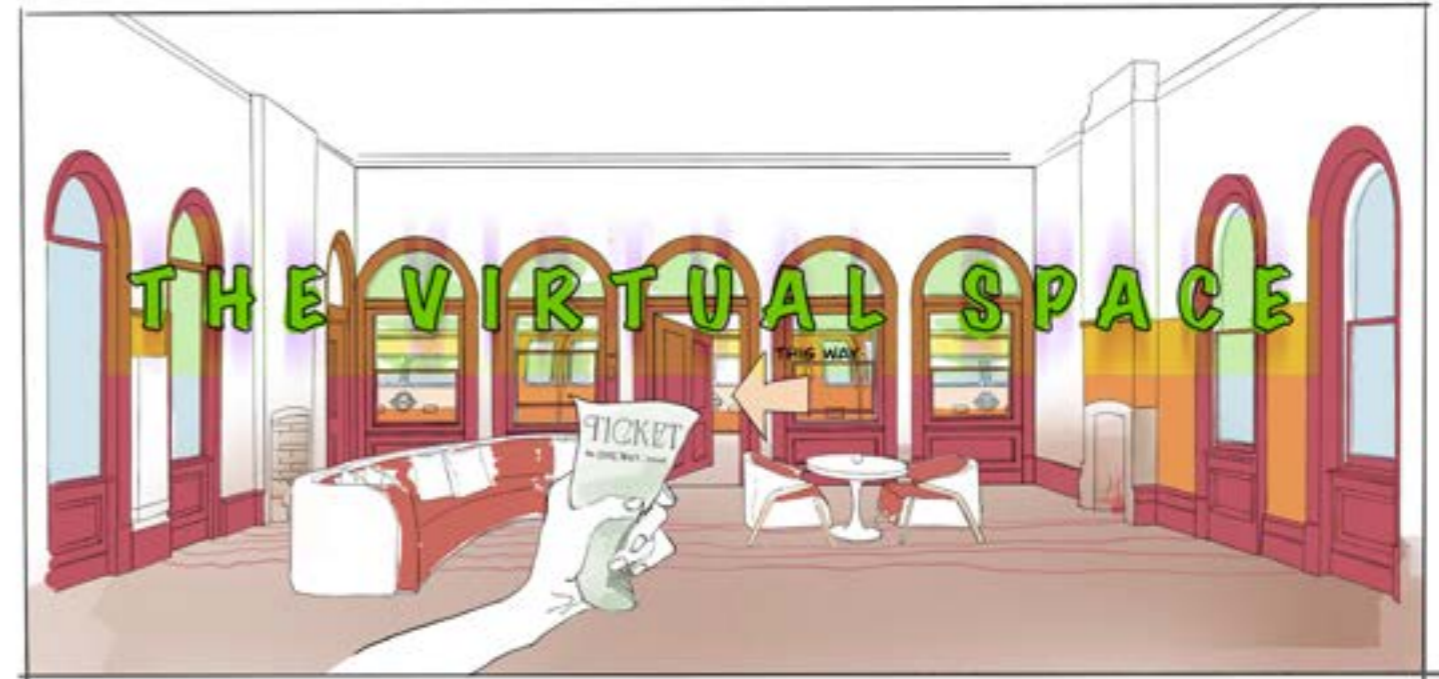
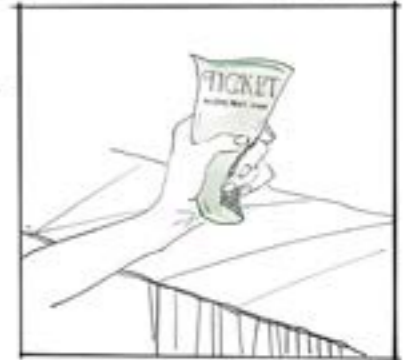
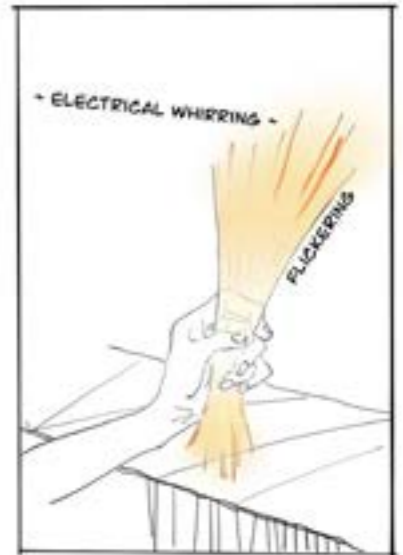
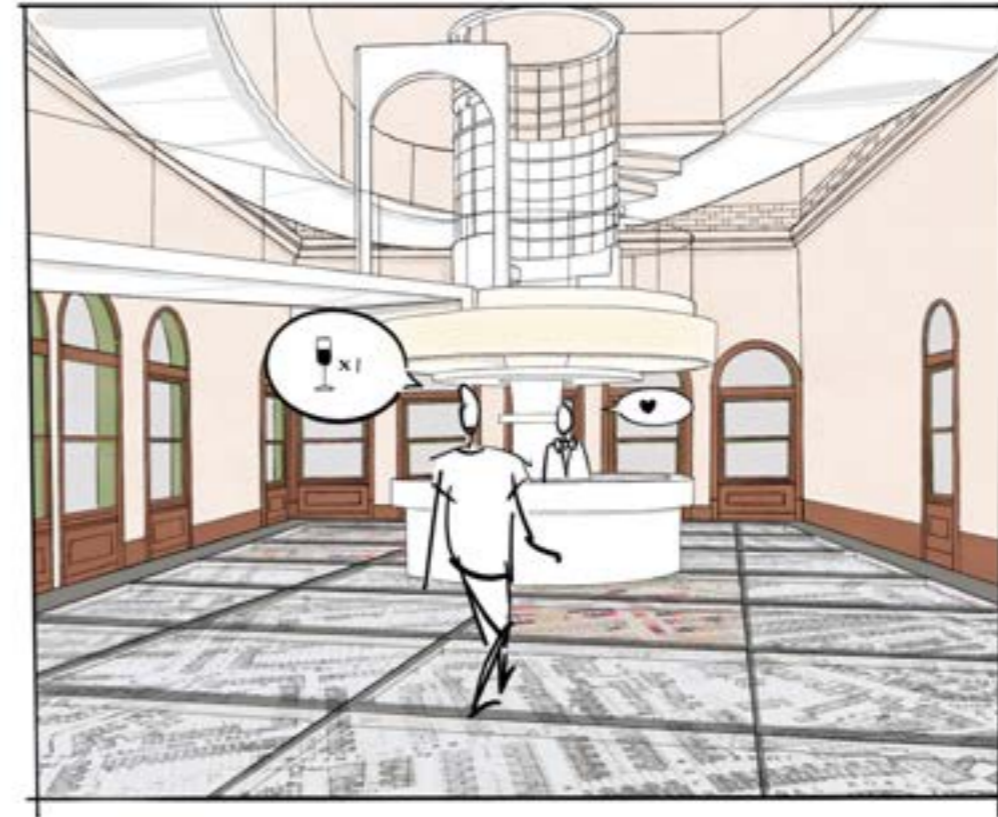
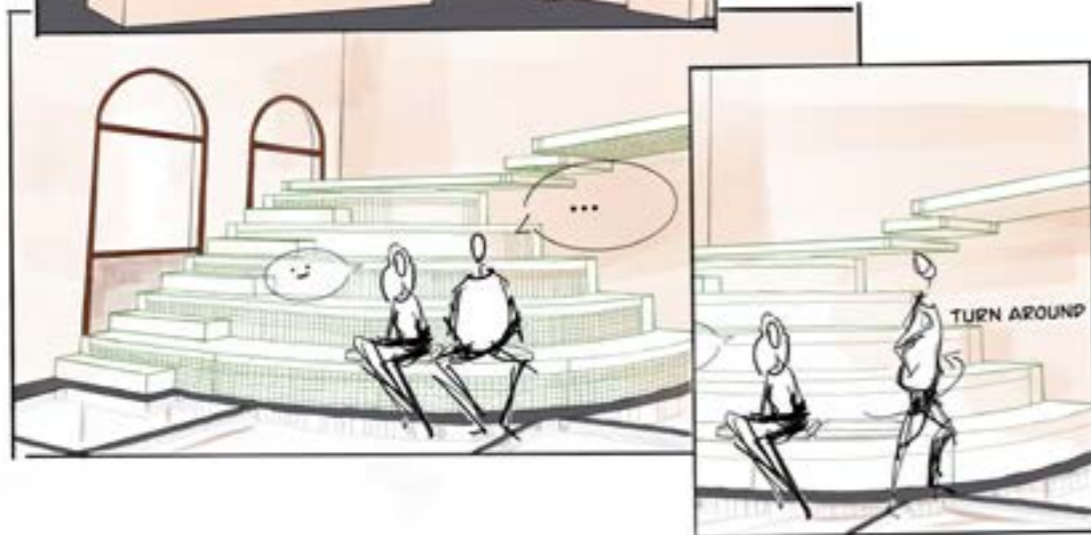
Immersive Visual Zone

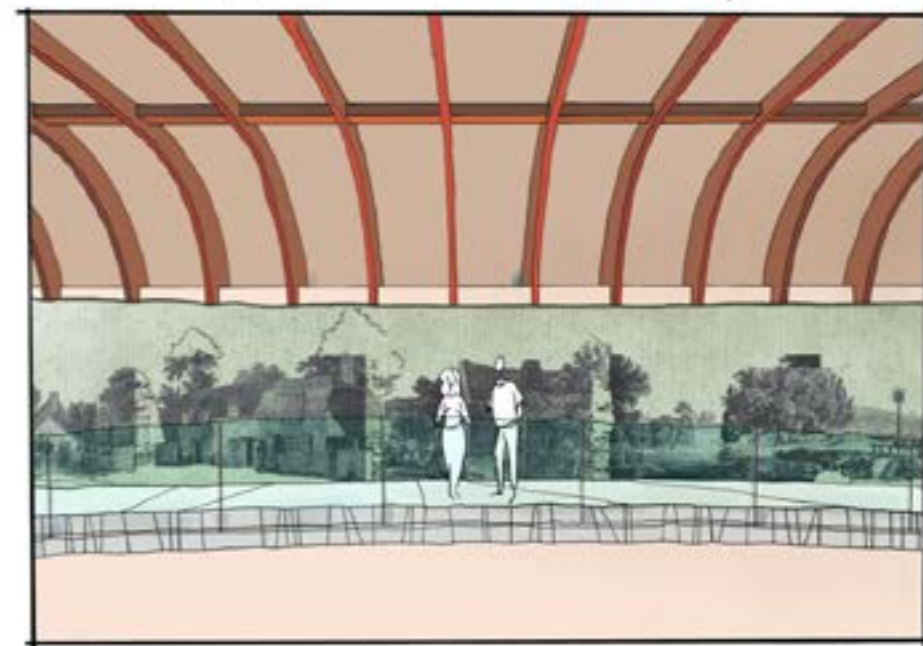
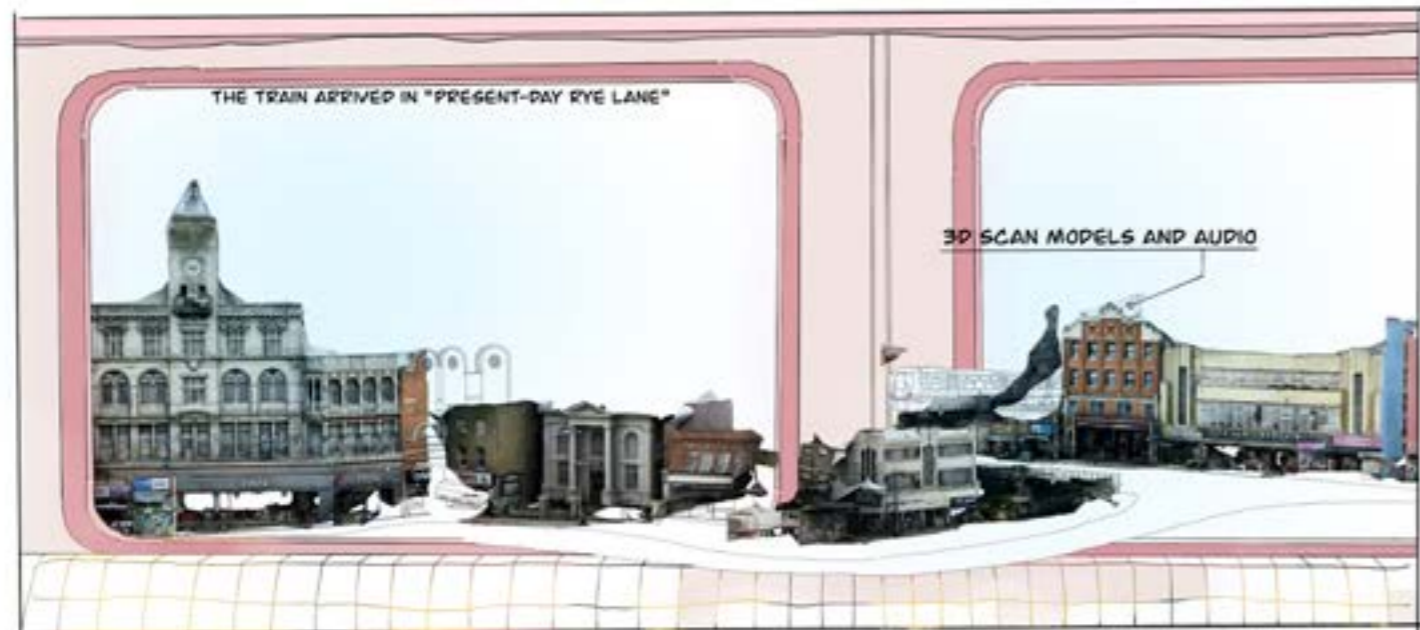
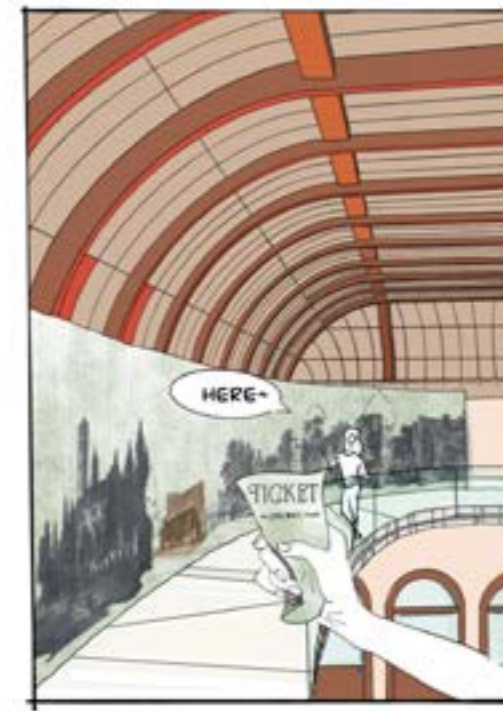
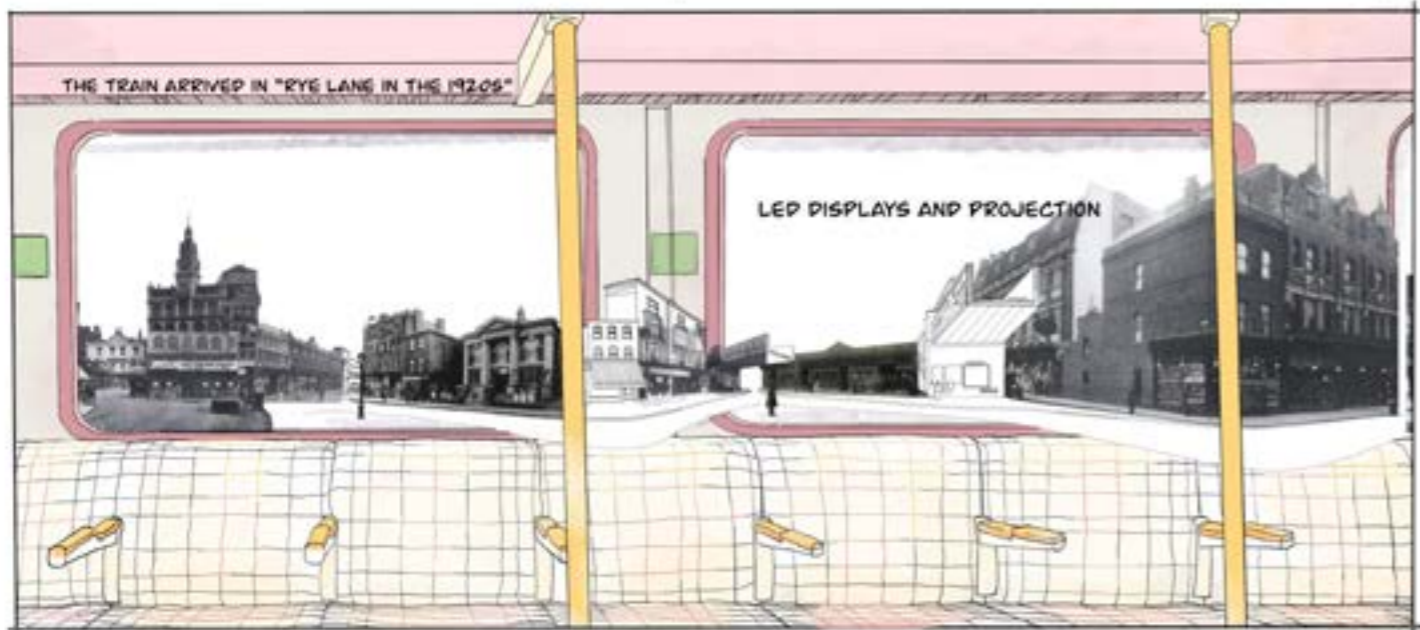
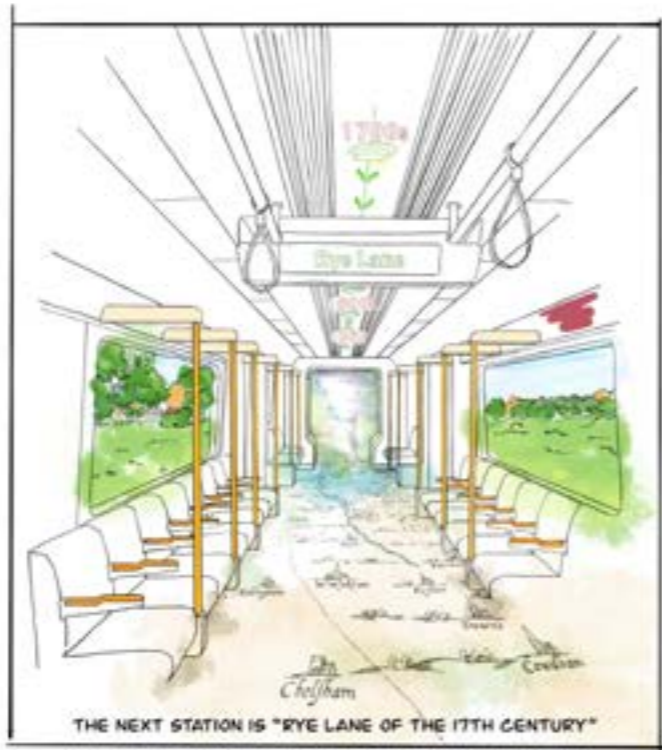
The First Floor

History Comes to Life with LED Narratives



"I HAVE COLLECTED MATERIALS SUCH AS PAINTINGS, PHOTOS, VIDEOS, AND 3D SCANS IN AN ATTEMPT TO BUILD A DIGITAL WORLD ABOUT RYE LANE, PECKHAM."





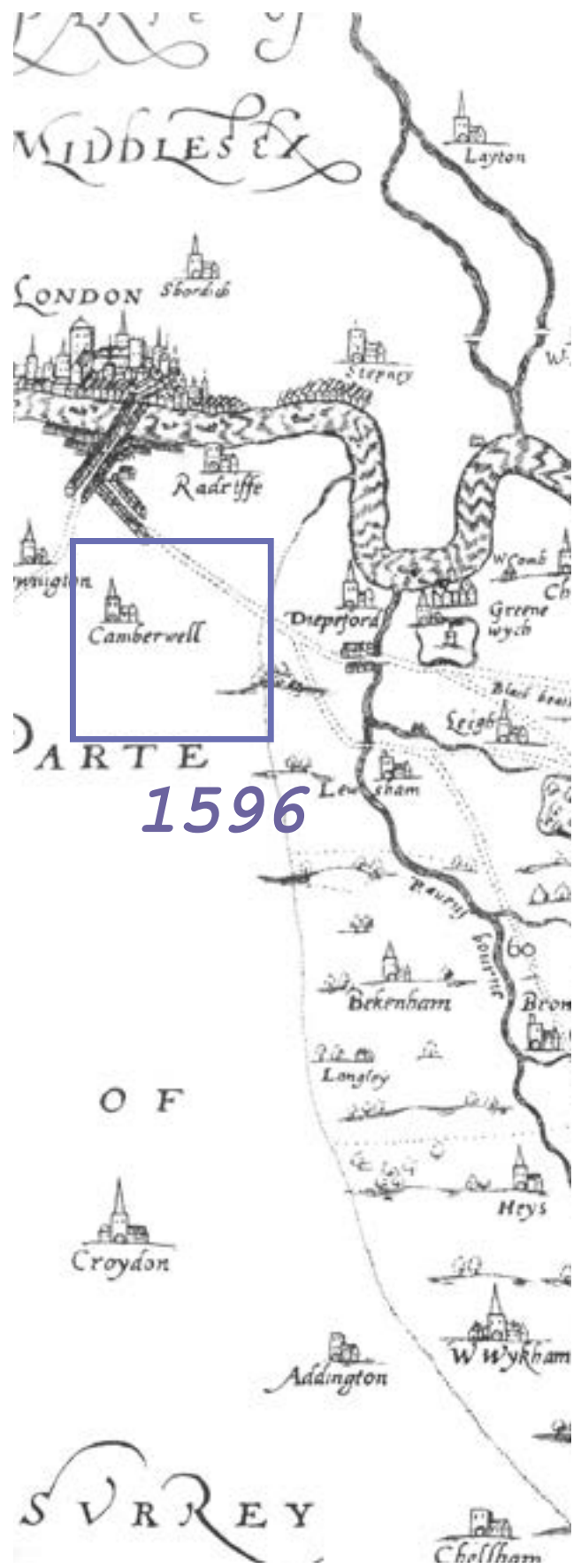


Rye Lane, London

Loading...

Data supporting the virtual world





Rye Lane, Created/Photographed in:

1804, 1905, 1815, 1810, 1815, 1828, 1810

1. Symonson's Map of Kent, 1596. Reckham is not marked, though Camberwell, Deptford and Lewisham can be seen. 2. Rocque's plan of London and Environs, sheet 7 showing srea around Dulwich, Camberwell and Peckham, 1741-45

The collected data is re-cut and reassembled into a series of visualizing histories with subjectivity.

In the virtual space, we are no longer dealing with a single expanse or uniform chronology, but a multitude of types of space and duration.

In this context, it is no longer history itself that concerns us, but the direction and expansion of our thought that history guides us toward.



3. Greenwood's (Ruff) Map of London, 1854

4. 25 inch Ordnance Survey map CIII, 1897 edition, Peckham began to develop into a thriving town.



Rye Lane, Photographed in:

1910,
Jones & Higgins'



1905,
Baptist Chapel



1930,
117~125 Rye Lane, Holdron's Arcade



1920,
135~147 Rye Lane, Holdron's Main Building

5. Map Descriptive of London Poverty, 1898-9. The Streets are Coloured According to the General Condition of The Inhabitants. As a shopping destination, Rye Lane was evaluated as "middle class", "well-to-do". 6. London County Council Bomb Damage Map, sheet 90, 1916 (updated by the LCC to 1940). The bombed areas are coloured with synthetic dyes and crayon, in colours which represent categories of damage, ranging from black to yellow.



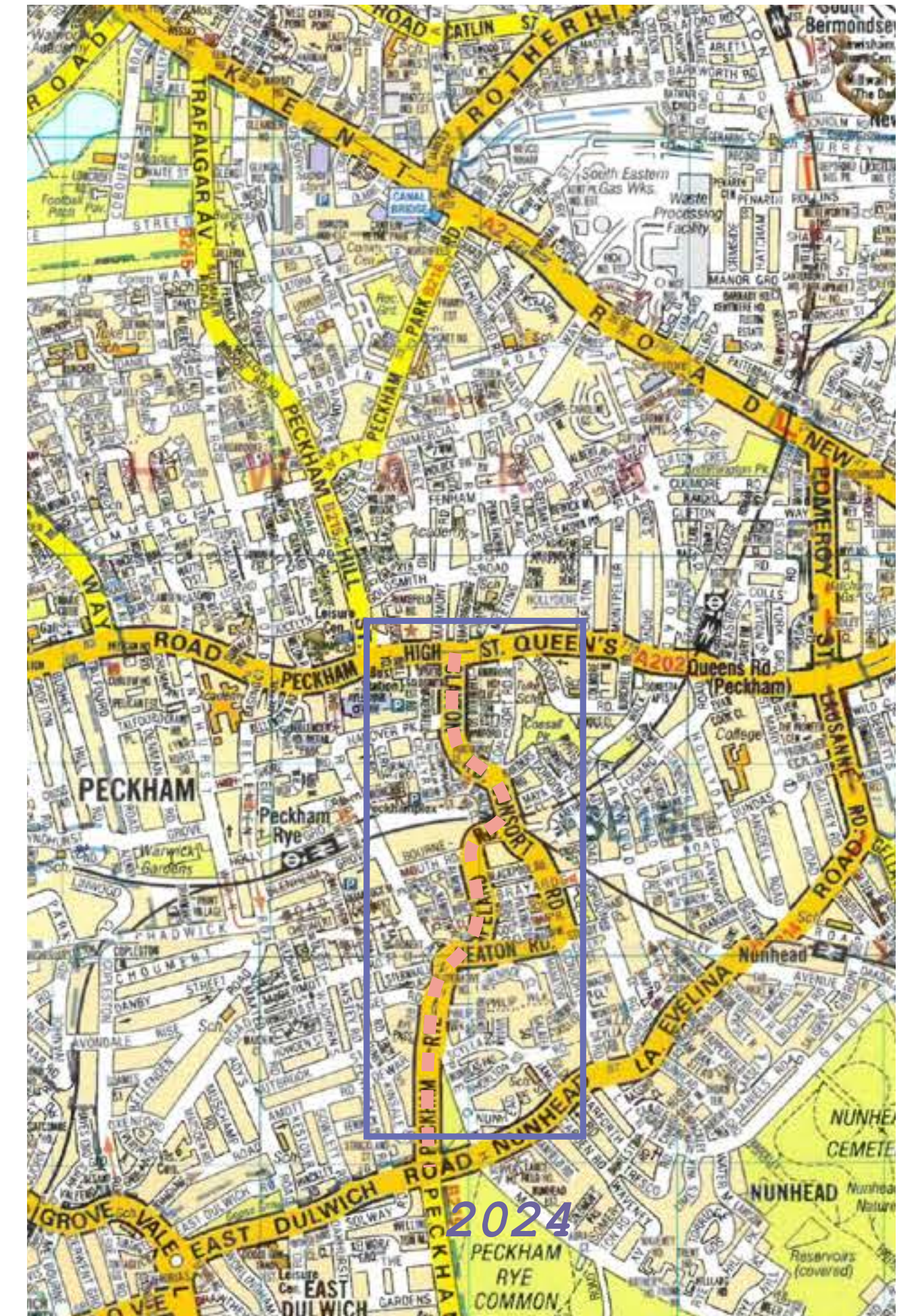
Rye Lane, 3D Scanner APP, 2024:

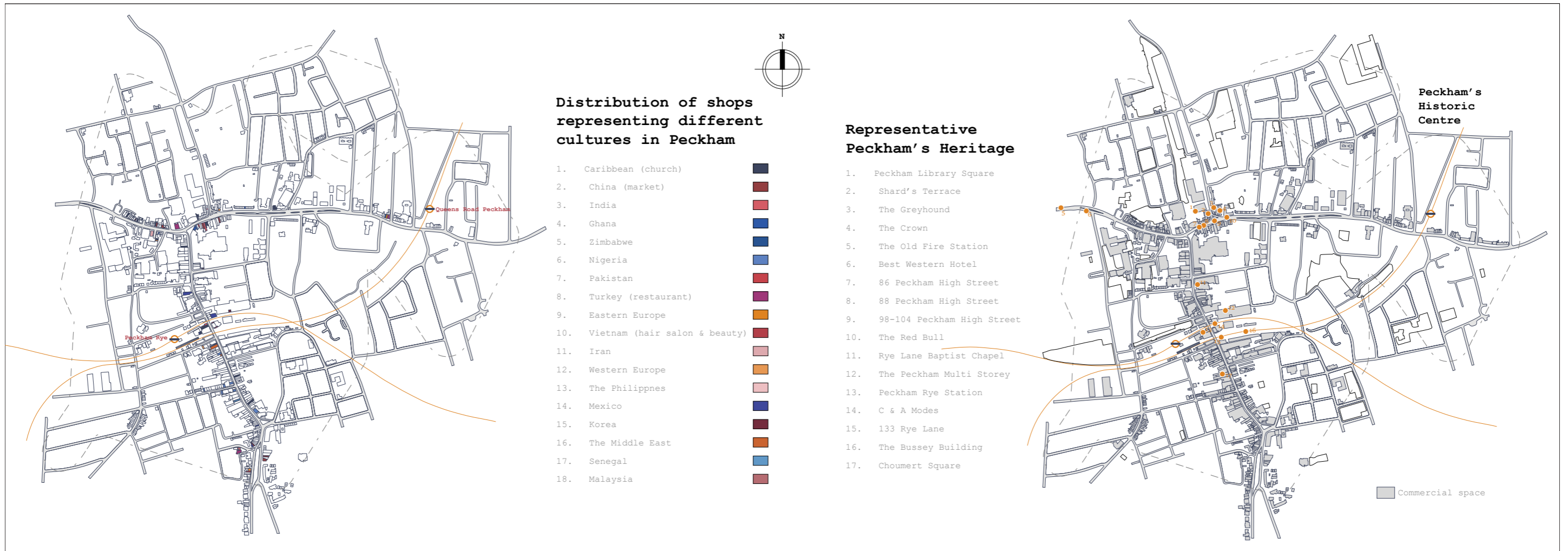
Costa Coffee,

Baptist Chapel,

117~125 Rye Lane, Mighty Pound,

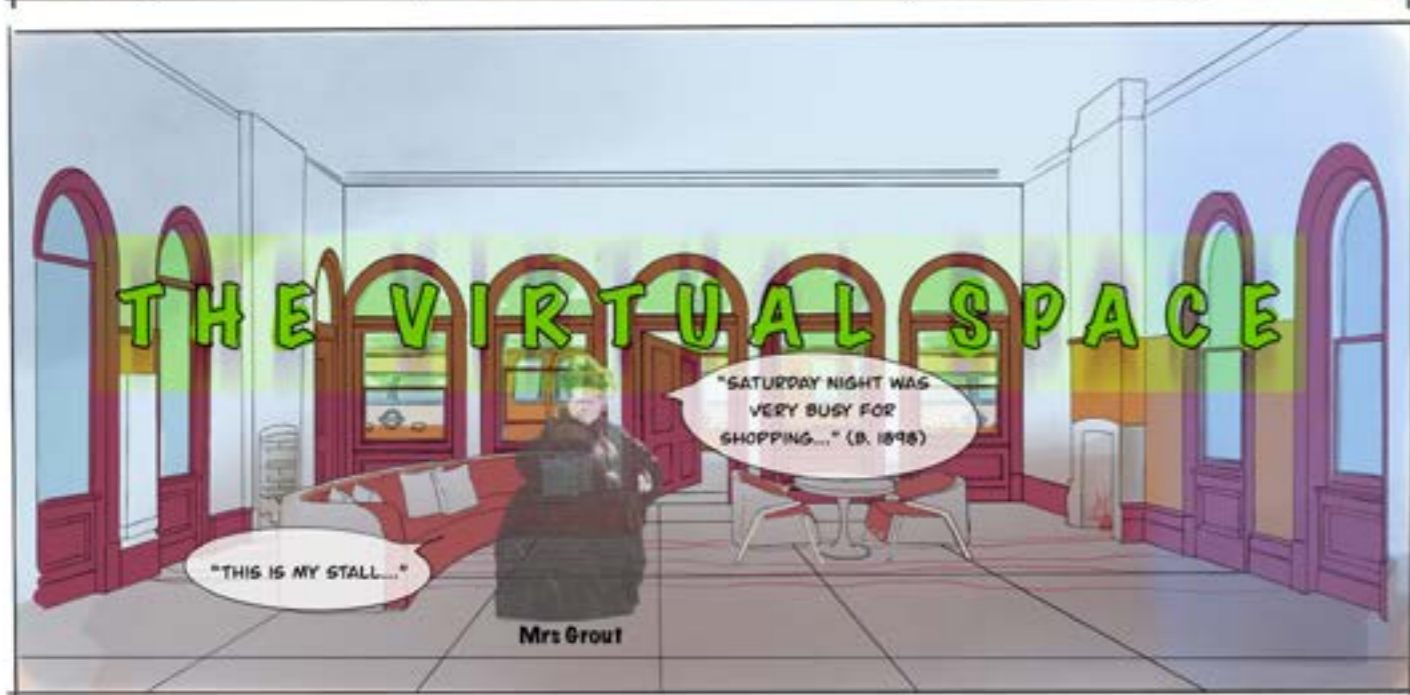
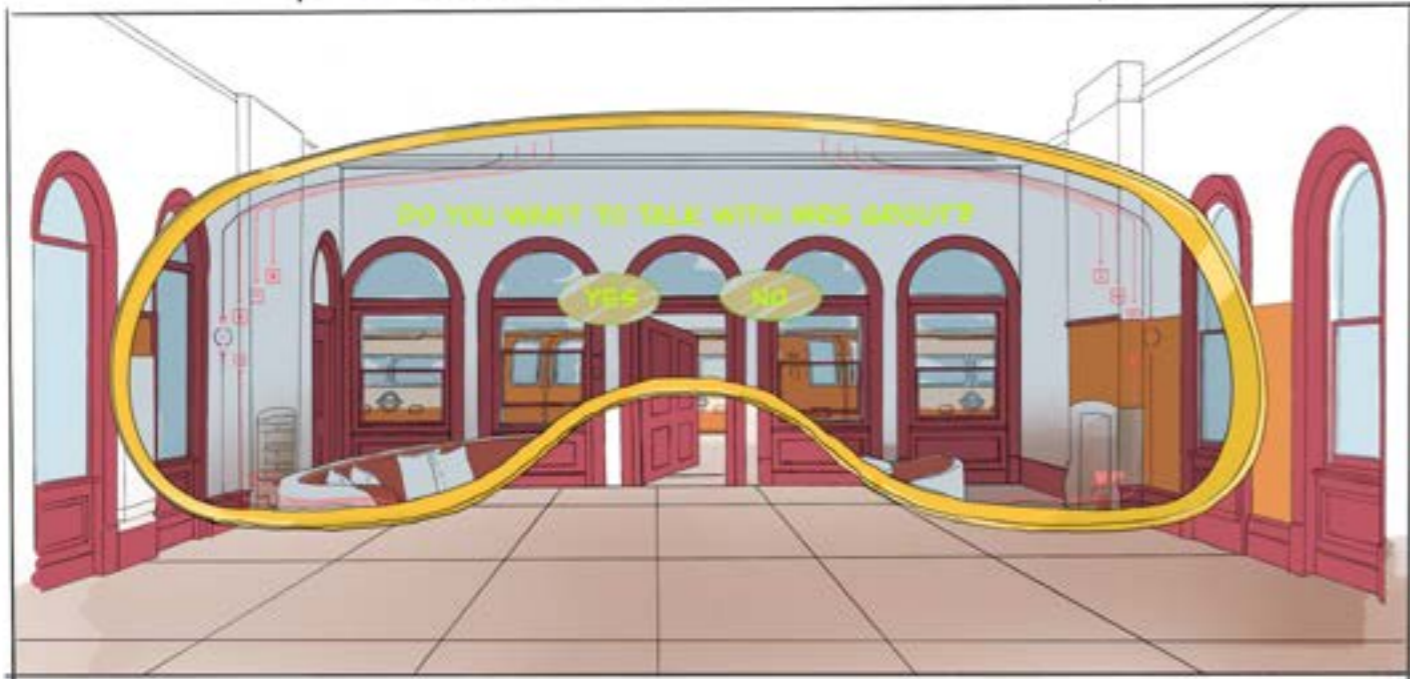
135 Rye Lane, Khan's Bargain Ltd,



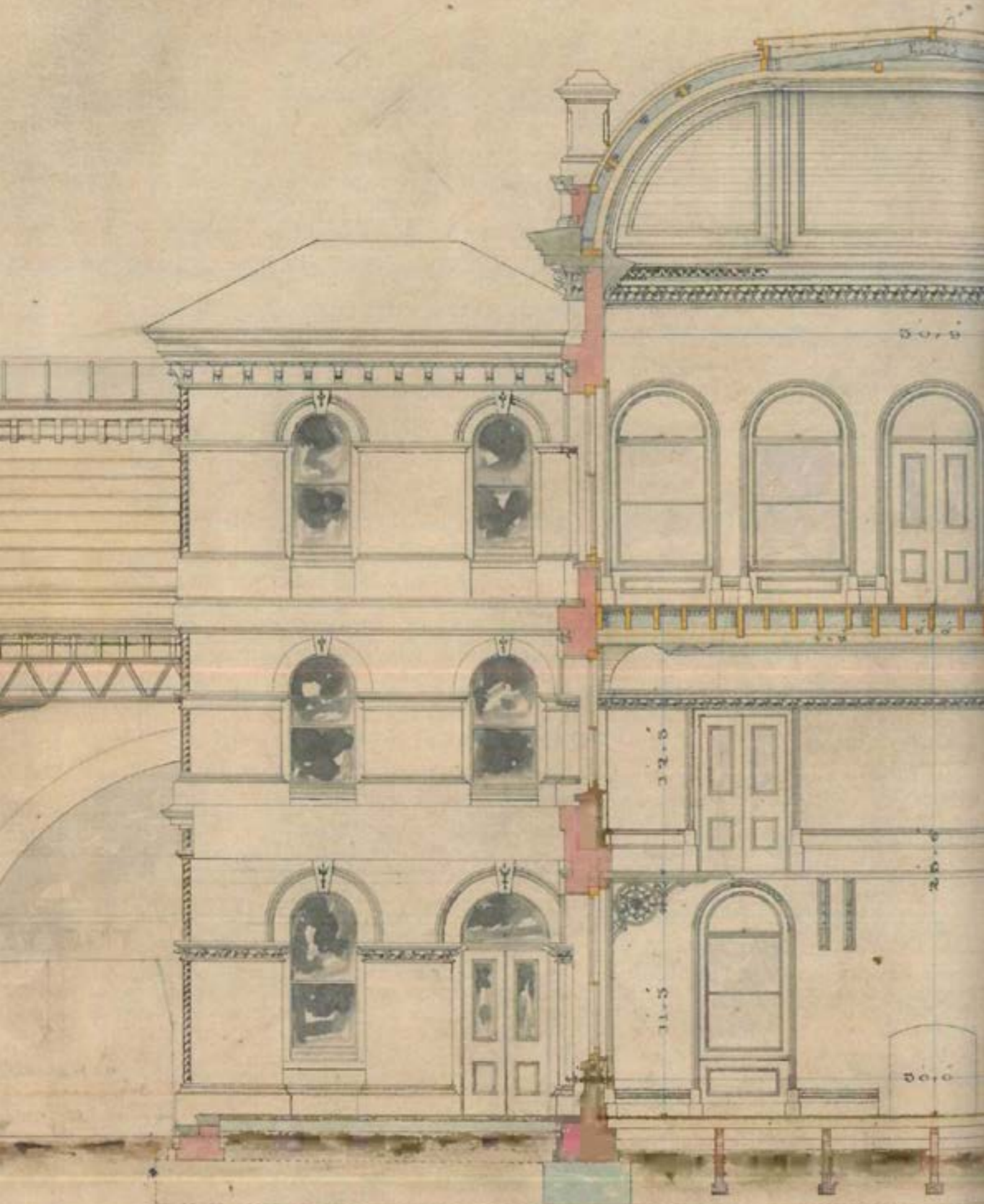


7. Premier map of London, An A-Z Publication, 2023.

8. You can feel firsthand from the map that Peckham is a diverse community ethnically and socio-economically. Rye Lane, as the commercial center of Peckham, is highly representative.



South section through Peckham Rye Station, 1865

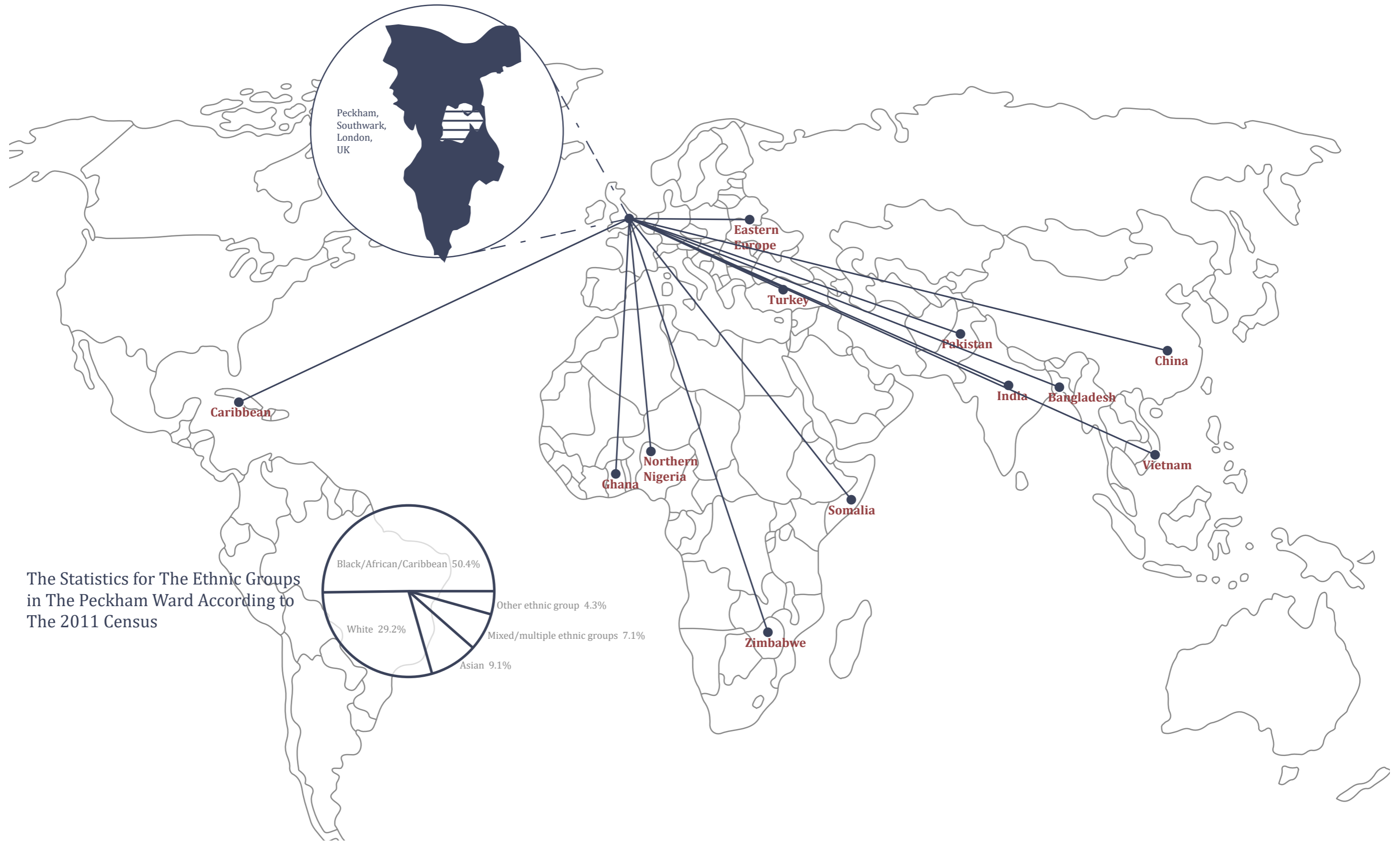


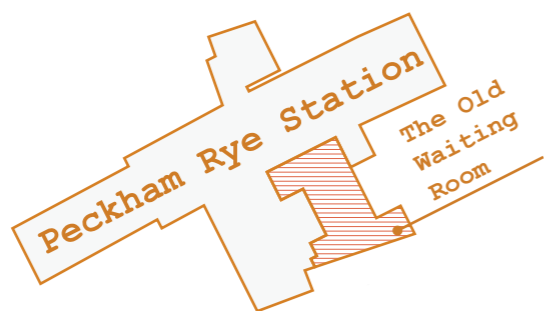
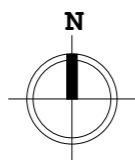
CROSS SECTION

The Physical Dimension
— Shaping Tangible Experiences of Heritage



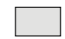
Variety of Cultures and Identities Included in Peckham

Peckham is a district in south-east London, a super-diverse area within the London Borough of Southwark. Immigration and urban diversity transform Peckham. As of 2011, the whole Peckham area had a Nigerian-born population of 5,250 people. A traditional London working-class community now coexists with communities that have their origins in the Caribbean, China, India, Ghana, Zimbabwe, Nigeria, Somalia, Pakistan, Bangladesh, Turkey, Eastern Europe and Vietnam.



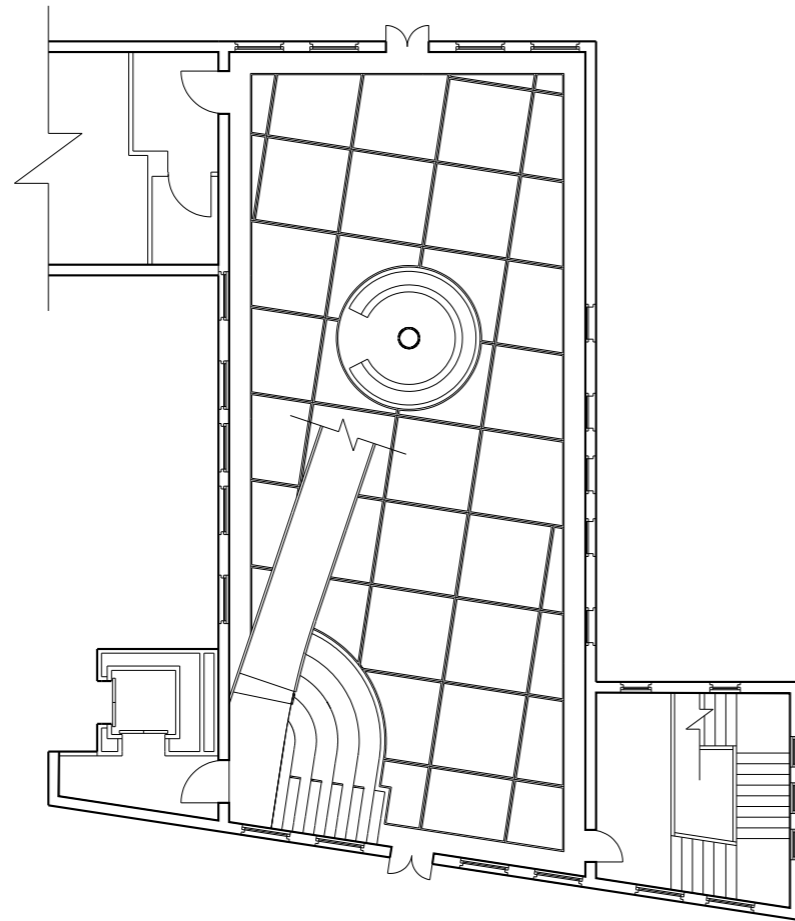
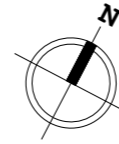


Peckham, London

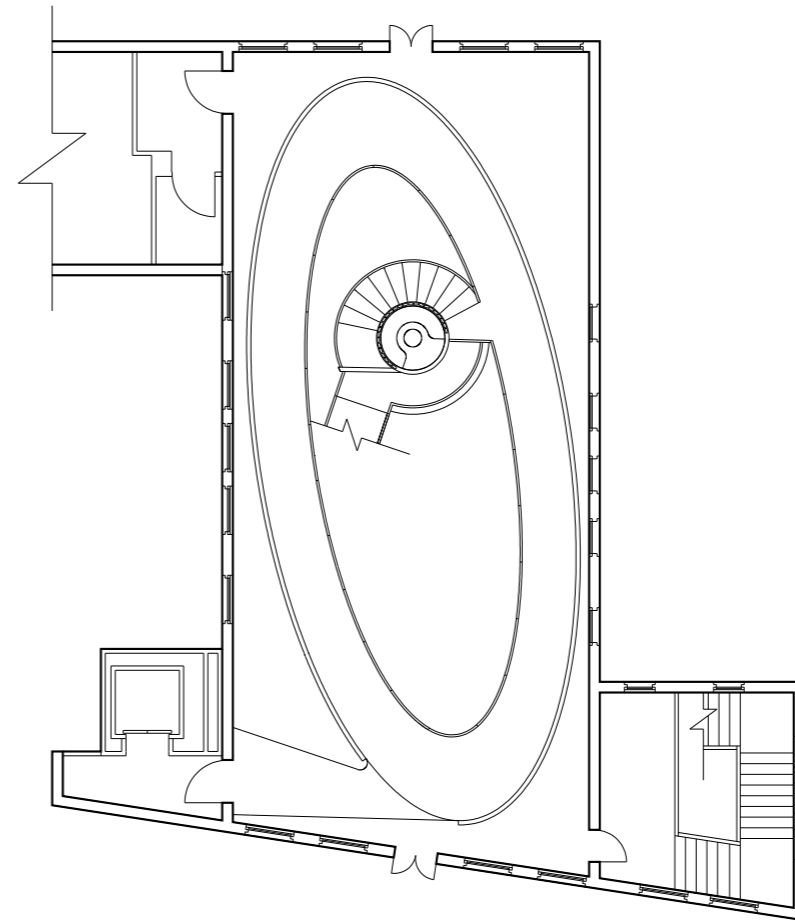
-  Peckham Rye Station
-  Commercial Space
-  Green space



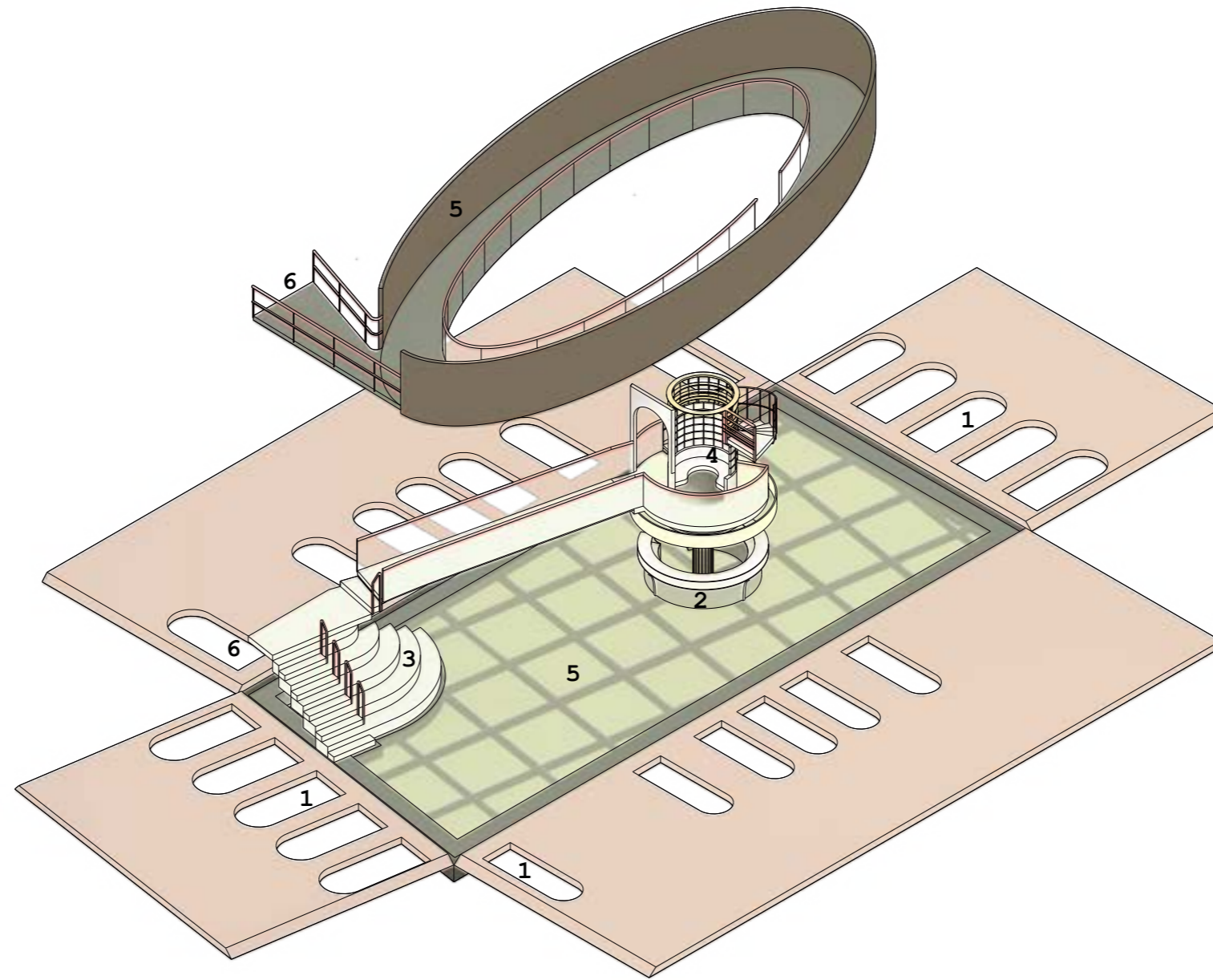
The Old Waiting Room



Ground Floor Plan



Second Floor Plan



- 1. entrance
- 2. reception
- 3. staircase area
- 4. data collection and interaction area
- 5. LED panel
- 6. elevator

Axonometric projection

