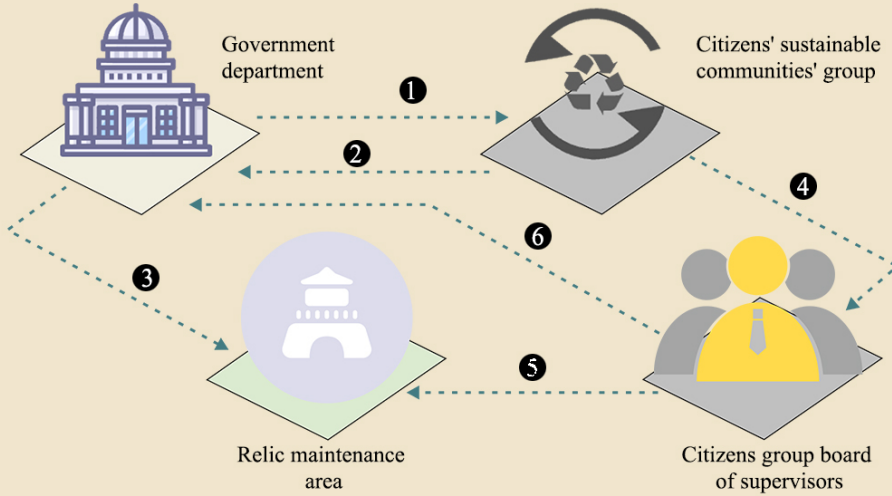
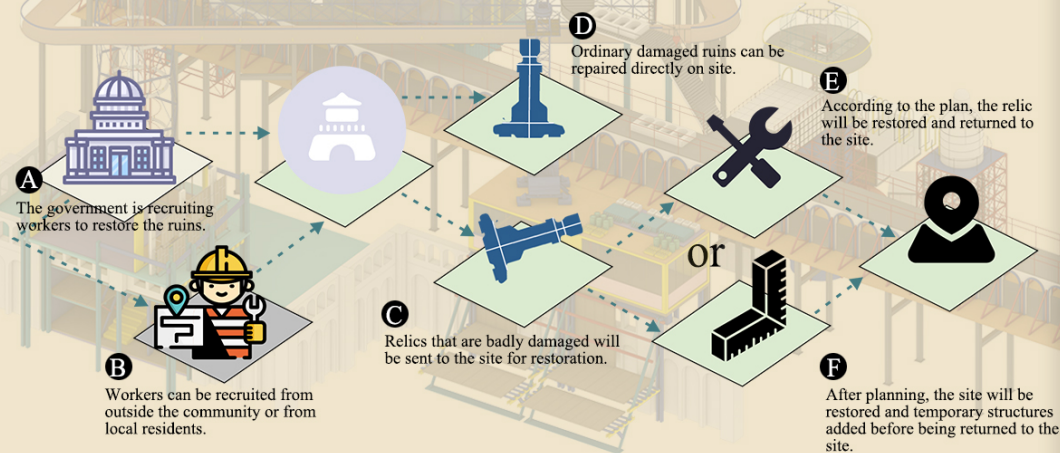


COMMUNITY MANAGEMENT STRUCTURE

RELIC MAINTENANCE AREA MANAGEMENT STRUCTURE AND RUNNING PROCESS

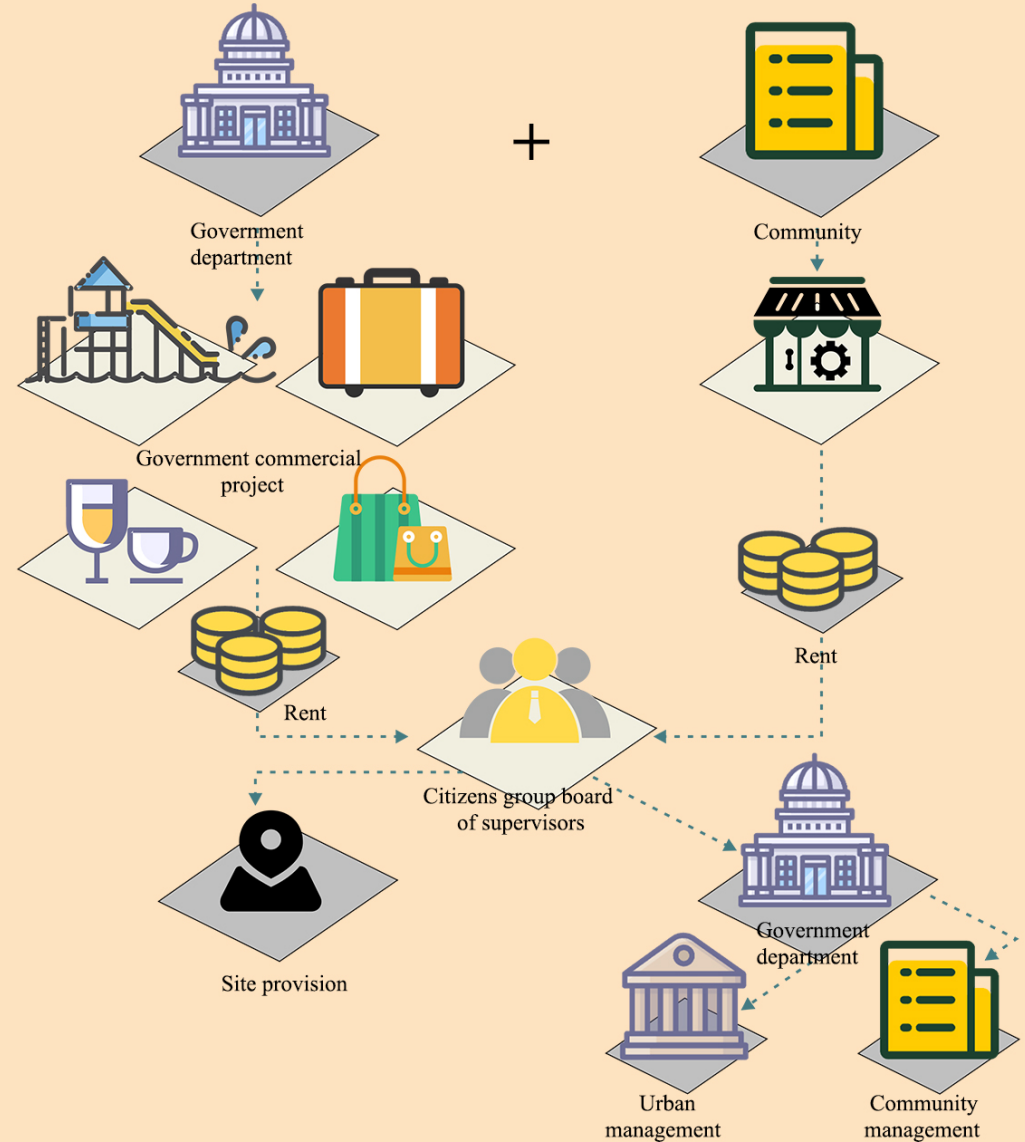


- 1 The government will then submit its proposals to the citizens' sustainable communities' group.
- 2 The citizens' sustainable communities' group will review the proposal and inform the government department to start work.
- 3 Government departments will pass on work plans to the relic maintenance area for work.
- 4 Citizens' sustainable communities' group will explain the site restoration work to citizens group board of supervisors and hope that they will supervise and protect the rights and interests of local residents, such as the safety of site transportation and construction nuisance and other problems.
- 5 The citizens group board of supervisors regularly supervises the heritage restoration department. If residents have problems with the heritage restoration work, the department will conduct internal discussion and report to the government department.
- 6



COMMUNITY MANAGEMENT STRUCTURE

COMMERCIAL AREA MANAGEMENT STRUCTURE



Community integrated commerce is a combination of government-led commerce and community-organized retail. They operate on a self-financing basis. In order to ensure the commercial reasonableness of the community, all commercial activities need to apply to the Citizens group board of supervisors and provide space rent. The Citizens group board of supervisors will arrange personnel to carry out on-site management. At the same time, these rents will be handed over to the government departments, and the relevant financial departments will arrange the use of funds, including the maintenance and development of the Crystal Palace community, urban construction, etc.

COMMUNITY MANAGEMENT STRUCTURE

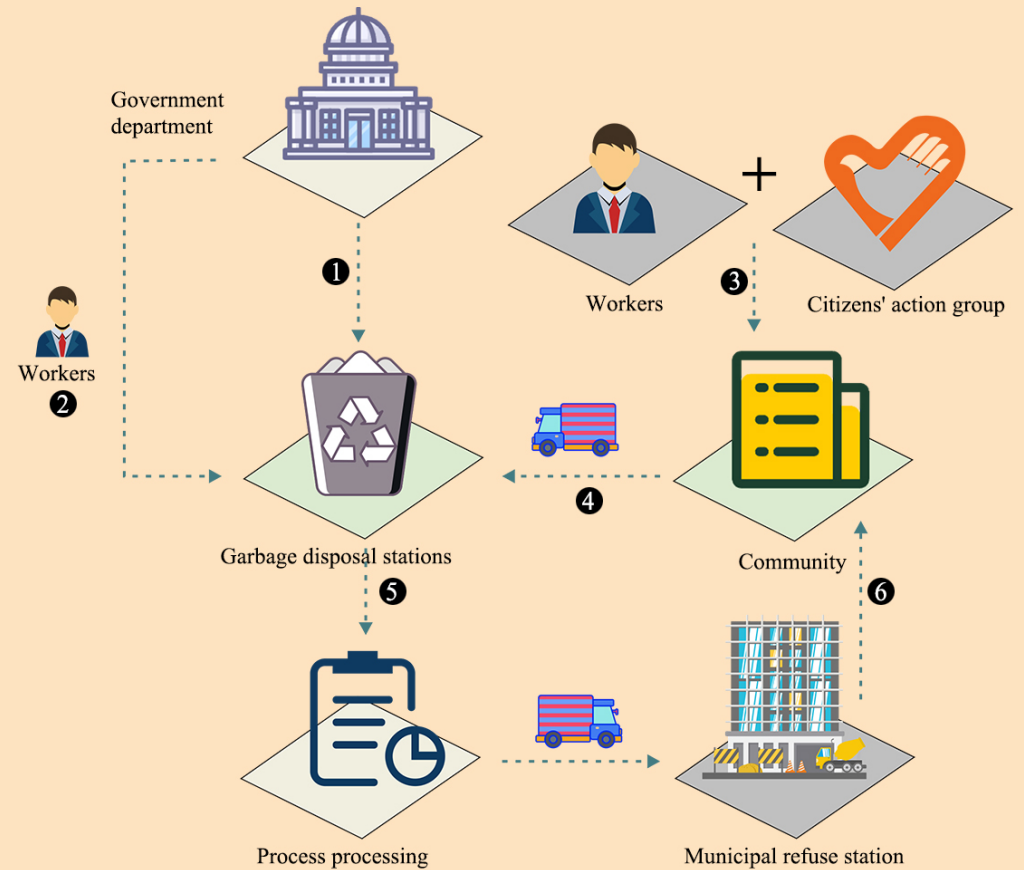
TRANSPORTATION CENTERS MANAGEMENT STRUCTURE



- 1 The government will issue tickets through the Crystal Palace community through an online platform, and these tickets will be cheaper than other ways to reach the Palace.
- 2 Visitors and residents can choose how they come to the Crystal Palace community through an online platform.
- 3 The community is allowed to drive to the community, the people who come to the community need to go through the safety inspection of government departments or community supervisors, to prevent visitors from carrying inflammable and explosive materials or other dangerous behaviors to damage the rights and interests of the community and residents. Verification will allow access to communities that would otherwise require the confiscation of dangerous items.
- 4

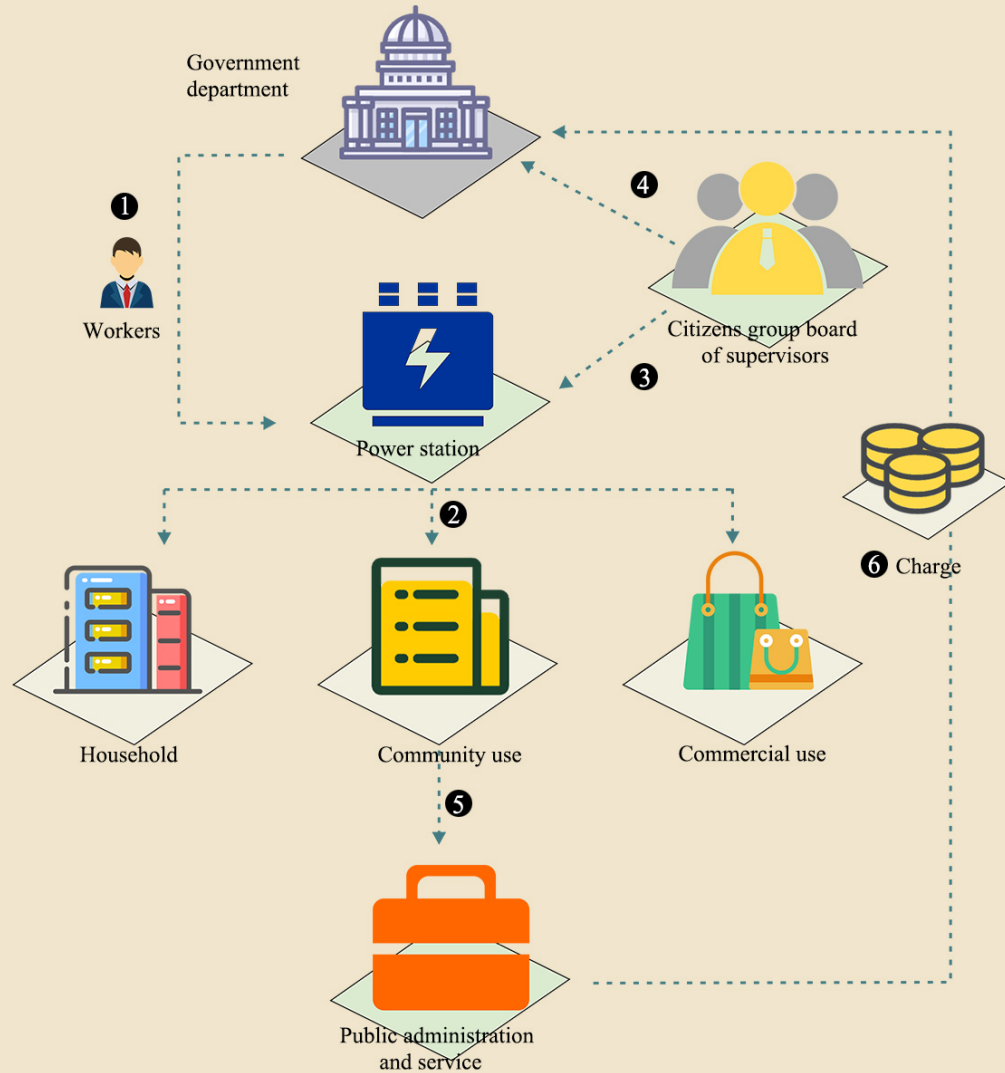
COMMUNITY MANAGEMENT STRUCTURE

GARBAGE DISPOSAL STATIONS MANAGEMENT STRUCTURE



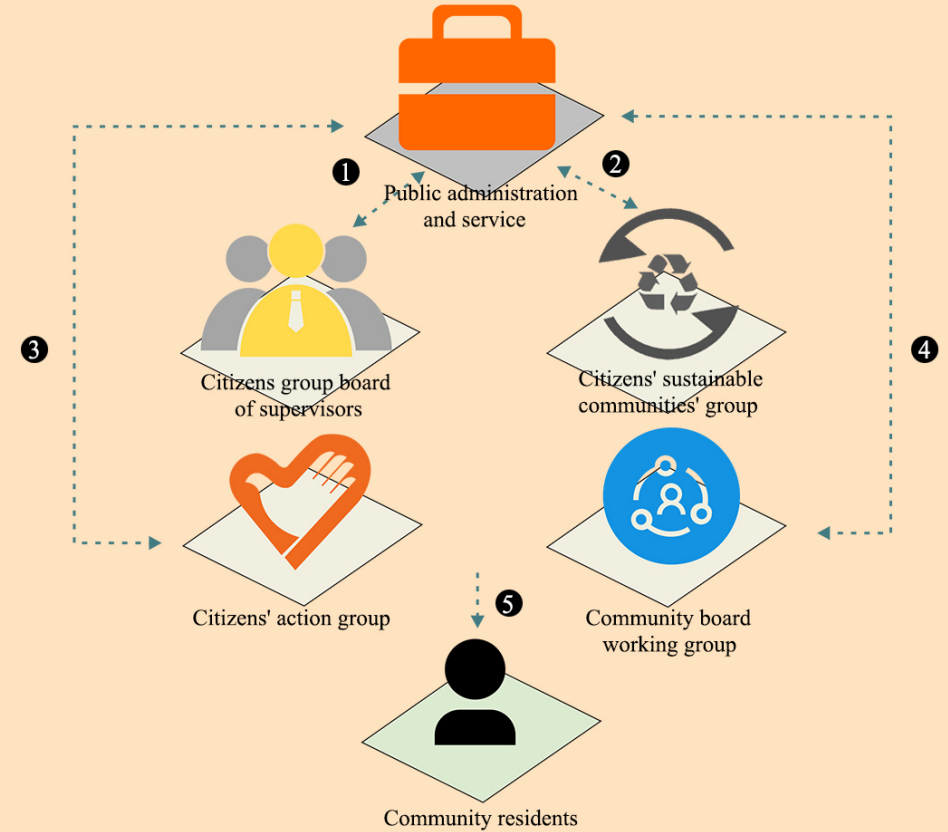
- 1 The government department will directly manage the waste disposal stations in the community, and then report to the community supervisory Board that the whole community needs to supervise the waste disposal of the community in accordance with the local waste disposal methods in London. The community supervisory board will then publicize the information.
- 2 Government departments will recruit appropriate staff to work at the processing stations.
- 3 The citizen's action team will cooperate with the work of the staff, including urging the community to separate garbage and maintaining public health in the community.
- 4 The staff will transport the sorted garbage from the community to the community's garbage disposal station.
- 5 In the garbage disposal station, the garbage will be further processed, including crushing, fine sorting, packaging, boxing and so on. The packed community garbage is sent to the city garbage station.
- 6 The vehicles that transport the garbage return to the community's garbage disposal station after they have disposed of all the garbage.

POWER STATION MANAGEMENT STRUCTURE



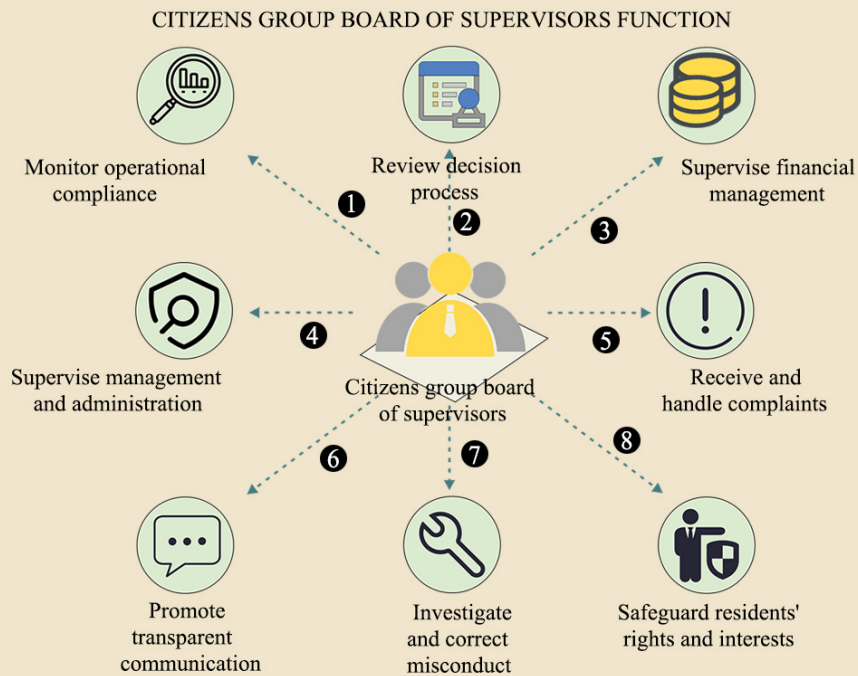
- 1 Government departments hire staff to manage power stations.
- 2 The community power station will cover the three aspects of the community's household, community use and commercial use.
- 3 The Citizens group board of supervisors will effectively supervise the power station, report the unreasonable and dangerous phenomena in the power station to the government department and request the government department to make rectification.
- 4 All parties in the community are required to pay a monthly fee for electricity to the Public administration and service.
- 5 These funds will be returned to the government's Treasury for effective management.

PUBLIC ADMINISTRATION AND SERVICE MANAGEMENT STRUCTURE



- 1 As a bridge between the government and the community, Public administration and service is mainly responsible for providing services for the convenience of the people. When Citizens group board of supervisors finds unreasonable phenomena in the community, It can be submitted to the Public administration and service for handling through petitioning and feedback.
- 2 The government will reflect the future planning plan of the community to Citizens' sustainable communities' group through Public administration and service. Citizens' sustainable communities' group can also collect residents' ideas about community development and feedback them to the government department. The final development result will be confirmed by the two departments after consultation.
- 3 In the process of community development, Citizens' action group and Public administration and service will cooperate with each other to serve local residents and help local residents solve practical problems. Such as organizing community events and projects, giving voice to vulnerable groups and crisis response and support.
- 4 The Community Board working Group coordinates, organizes, and implements specific community programs and activities to meet the needs of residents, enhance community cohesion, and improve the quality of life, and feedback to the Public administration and service.
- 5 All of these departments will serve the community residents, and the community. Try to meet the needs of local residents and let the community develop equally.

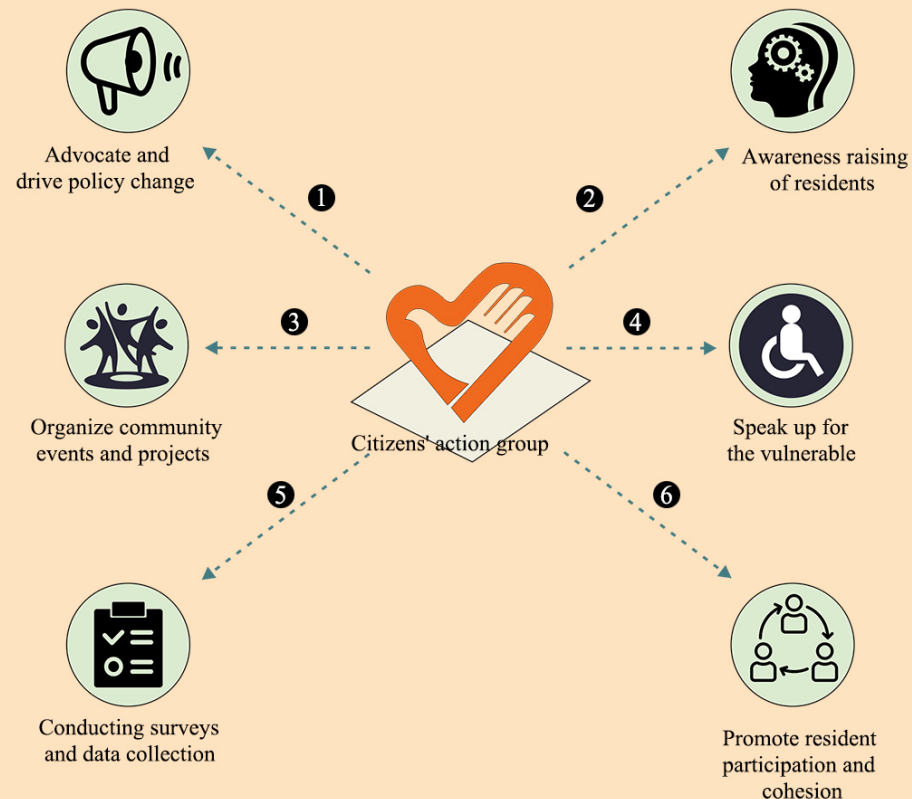
COMMUNITY MANAGEMENT STRUCTURE



- 1 The Supervisory Board is responsible for checking that the operations of the community and functional areas are in compliance with regulations, bylaws and policies. Ensure that all activities and decisions are carried out in accordance with relevant laws and regulations and in accordance with the rules and regulations of the community.
- 2 The Board of Supervisors reviews major decisions and projects made by the community or the government for the community, assessing their reasonableness and feasibility, and ensuring that the decision-making process is fair, open and in the overall interest of the community.
- 3 The Board of Supervisors has the power to review and supervise the financial statements, budget execution and use of funds of the community or organization. Its role is to ensure financial transparency and to prevent misuse or improper use of funds.
- 4 The Supervisory Board monitors the performance of the community government sector and ensures that management acts within its responsibilities and is transparent and fair in its work.
- 5 Ensure that residents' concerns are addressed and that community management is pushed to resolve problems.
- 6 Ensure that residents or members are kept up to date on important issues in the community through regular public meetings or announcements.
- 7 If any irregularities, improper practices or conflicts of interest are found, the Supervisory Board has the right to investigate and take the necessary corrective measures to ensure that there is no corruption or malpractice within the organization.
- 8 The primary task of the Board of Supervisors is to ensure that the rights and interests of community residents are not infringed, to ensure that management and operational decisions are in the best interests of residents, and to maintain the overall harmony and justice of the community.

COMMUNITY MANAGEMENT STRUCTURE

CITIZENS' ACTION GROUP FUNCTION



- 1 Citizen Action groups help solve social, economic, or environmental problems in the community through advocacy and advocacy to push the functional area or community to adopt new policies or change existing policies.
- 2 By organizing lectures, workshops, and social media campaigns, we raise public awareness of certain issues, such as environmental protection, public health, and community safety, so as to increase residents' attention to and participation in the issues.
- 3 Citizen Action groups organize cleaning activities, greening projects, volunteering and other community activities to directly improve the community environment, enhance community cohesion, and involve more residents.
- 4 Through advocacy, media coverage and public events, team members give a voice to vulnerable people in the community, ensuring that their needs and issues are addressed and addressed.
- 5 Citizen action group can conduct community surveys, interviews, or questionnaires to understand the issues facing the community, collect real data and feedback from residents, inform action plans, and drive improvements.
- 6 By encouraging residents to participate in public affairs, the group promotes the sense of belonging and responsibility of community members, so that more residents can actively participate in community development and form a positive community culture.

COMMUNITY AUXILIARY POLICE GROUP FUNCTION



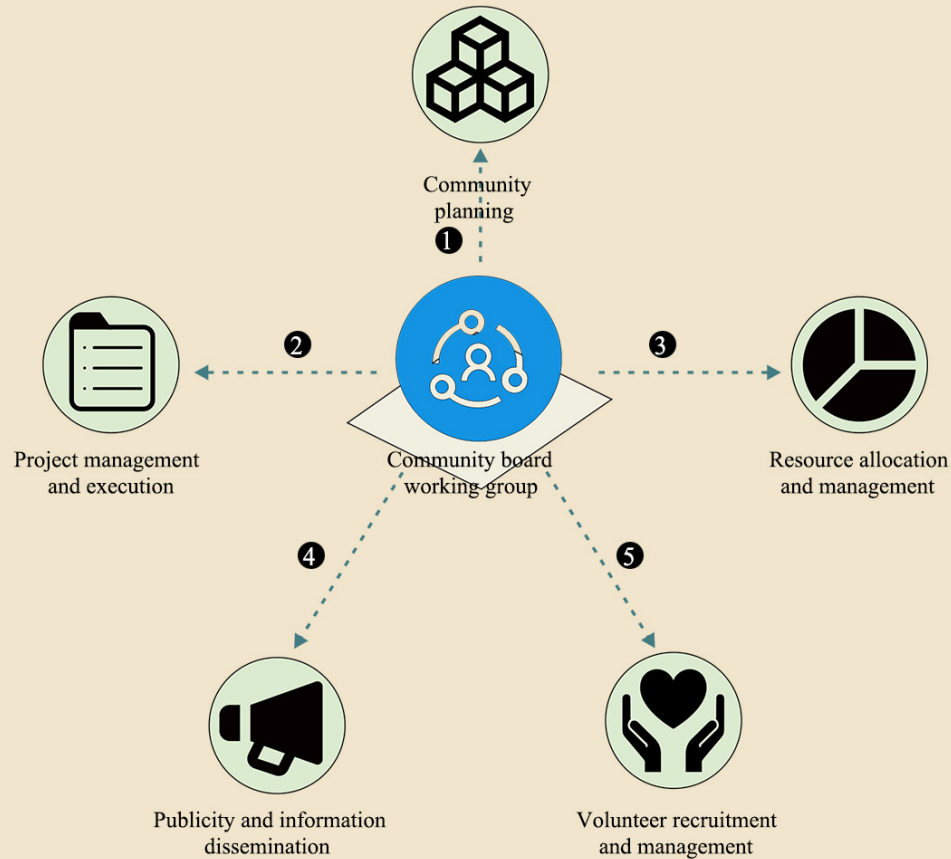
- 1** Auxiliary police group conduct daily patrols in the community to prevent and combat criminal activities and safeguard the safety of the community.
- 2** In the event of an emergency (such as fire, medical emergency, natural disaster, etc.), the auxiliary police quickly arrive at the scene and assist the professional emergency rescue force to control the situation, evacuate the crowd, protect the scene and ensure the safety of residents.
- 3** Auxiliary police members help mediate disputes between residents, coordinate to solve small conflicts in the community, avoid small conflicts escalating into serious public security incidents, and promote community harmony.
- 4** The auxiliary police force assists the urban police to carry out police work, provides population information collection, floating population management, and help for special groups, and helps to promote the refinement of community police management.
- 5** During important holidays and large-scale community activities, the auxiliary police force increased patrols and duty efforts to prevent gathering incidents and ensure the safe and orderly conduct of activities.
- 6** Auxiliary police regularly investigate the safety hazards in the community (such as aging power lines, blocked fire passages, etc.), timely report to the community and relevant departments, and promote the hidden dangers.

CITIZENS SUSTAINABLE COMMUNITIES GROUP FUNCTION



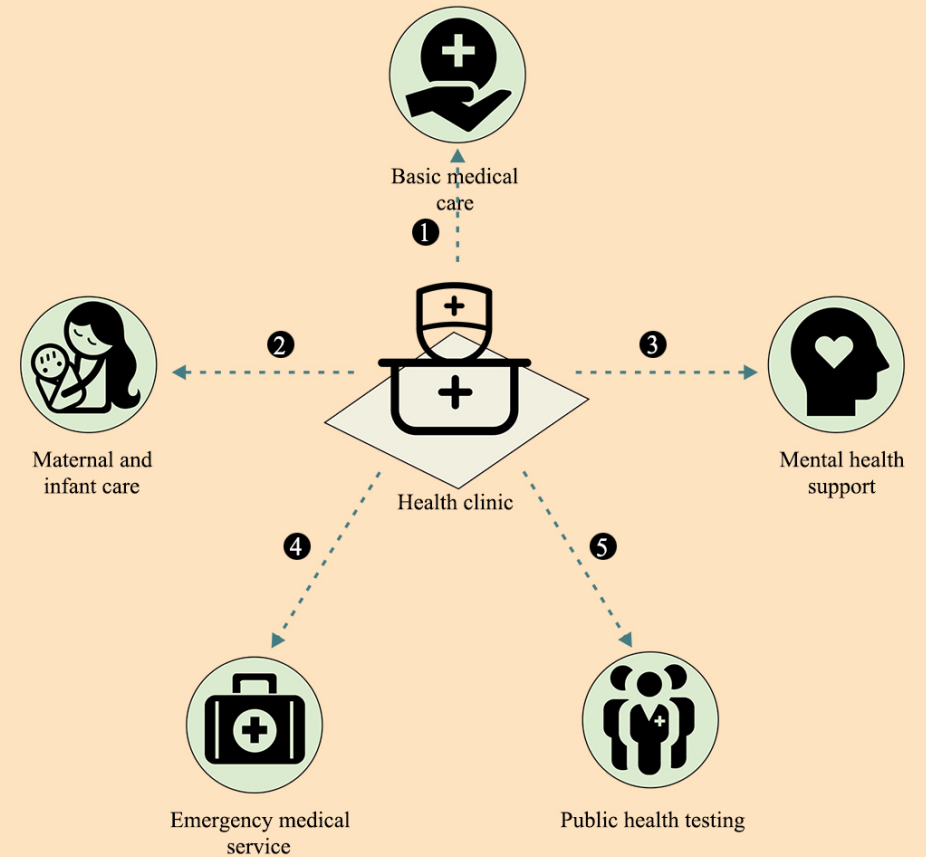
- 1** Through publicity and education, community residents are encouraged to adopt a low-carbon and environmentally friendly lifestyle, such as reducing the use of single-use plastics and promoting green travel (walking, cycling, public transport).
- 2** Regularly organize environmental protection activities, such as garbage sorting training, cleaning day, tree planting activities, environmental protection knowledge lectures, etc., to enhance residents' awareness of environmental protection.
- 3** The community and the government discuss the recycling of monuments and encourage residents to protect existing monuments.
- 4** In collaboration with government authorities, participate in the development of sustainable development plans for the community, ensure the balance between the development of the community and the protection of the environment and heritage, and support the construction of green buildings and energy efficient facilities.
- 5** Work with government environmental authorities and environmental ngos to bring in resources and expertise to enhance the implementation of sustainable development projects in the community.
- 6** Encourage and support residents to participate in sustainable development activities, establish community environmental volunteer teams, so that residents can play an active role in the community and jointly achieve sustainable goals.

COMMUNITY BOARD WORKING GROUP FUNCTION



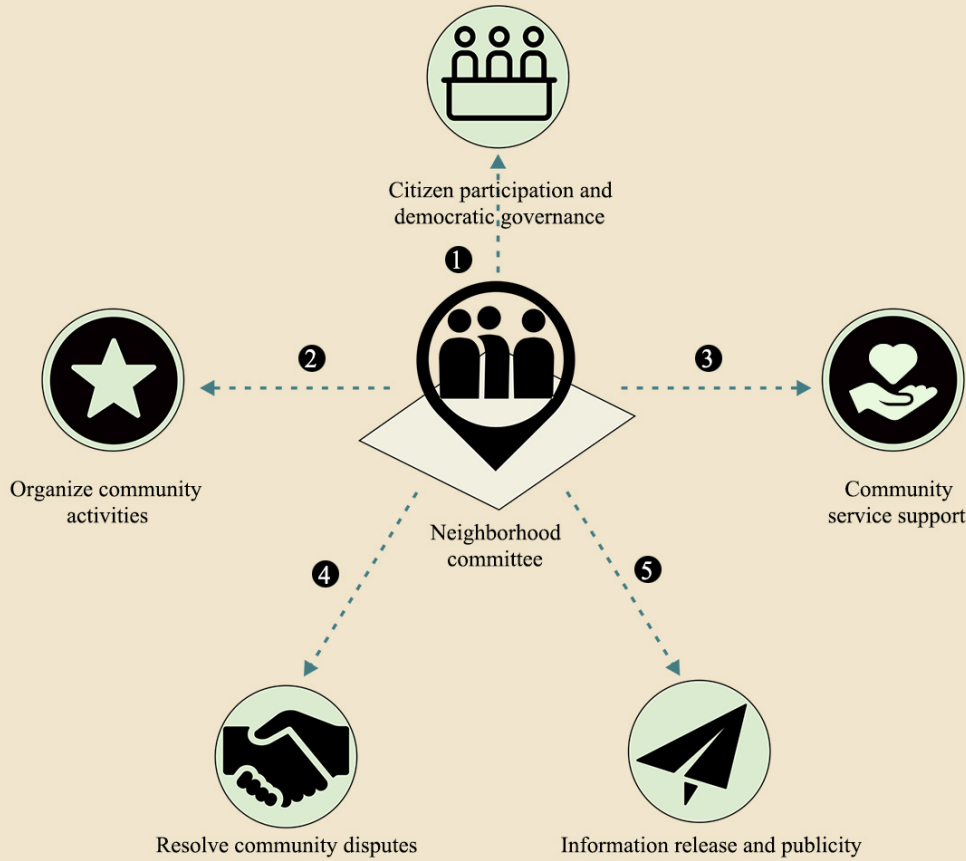
- 1** The Working Group is responsible for assisting community boards in formulating and implementing community development plans and policies to promote sustainable community development and meet the diverse needs of residents.
- 2** The working group is responsible for the planning, implementation and supervision of specific community projects, such as the maintenance of public facilities, community greening, community safety projects, etc., to ensure that the projects are completed on time and in good quality.
- 3** The working group manages and allocates community resources, including funds, equipment and space, to ensure that resources are directed to the most needed projects and activities, and to improve the efficiency of resource use.
- 4** The working group is responsible for the publicity and dissemination of community information, and communicates important information and activity notices to residents through bulletin boards, online platforms, community briefings, etc., to ensure that residents are informed of community affairs in a timely manner.
- 5** The working group is responsible for the recruitment, training and management of community volunteers, organizing volunteers to participate in various community service activities, and improving the service quality of the community.

HEALTH CLINIC FUNCTION



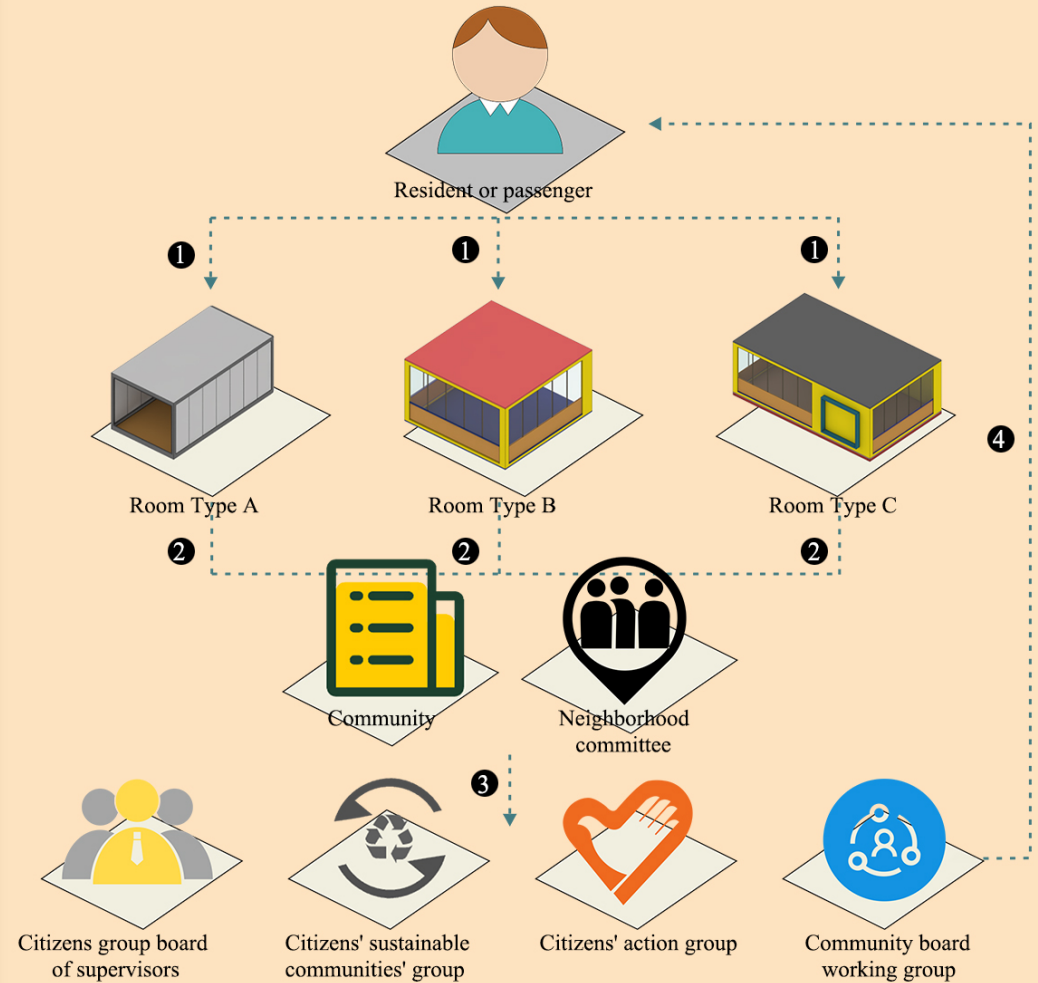
- 1** Provide diagnosis and treatment of common and chronic diseases to meet the daily medical needs of community residents.
- 2** Provide prenatal and postnatal health care services to pregnant women, including prenatal check-up, postpartum follow-up, and breastfeeding guidance, so as to promote maternal and child health.
- 3** Provide psychological counseling services, provide emotional support and psychological counseling for residents with psychological distress, and improve the overall mental health level of the community.
- 4** Provide first aid services in emergency situations, such as basic treatment of trauma and acute attacks, and provide necessary medical support as soon as possible.
- 5** Monitor the health situation of the community, regularly analyze the health data of the residents, and identify and prevent potential public health problems in a timely manner.

NEIGHBORHOOD COMMITTEE FUNCTION



- 1** Organize residents' meetings, open forums, etc., and encourage community members to participate in the discussion and decision-making of community affairs. Promote democratic governance of communities by enhancing the sense of participation and responsibility of residents.
- 2** Plan and organize community activities, such as festivals, volunteer services, education and training activities, to strengthen community cohesion and promote interaction and connection among residents.
- 3** Promote the improvement of community health, education, culture and other social services. The committee works with the Board of Supervisors of Possibility Space, the Citizen Action Group, and the Citizen Sustainability Group to provide services such as, senior care, youth activities, and community settlement management to meet the diverse needs of the community's residents.
- 4** Help residents to resolve disputes within the community, provide a fair and just mediation channel, and promote neighborhood harmony.
- 5** Release important information through bulletin boards, community websites, news bulletins and other means to publicize the progress of community activities and projects to ensure that residents are kept abreast of community developments and the latest government policies.

DWELLING DISTRICT MANAGEMENT STRUCTURE



- 1** Residents or visitors need to choose their own room type from the community's platform and submit an application.
- 2** After the application is approved, residents or visitors need to pay the fee to the community platform. At the same time, the community neighborhood committee will help residents handle the corresponding settlement process.
- 3** The community's Board of Supervisors, Sustainability groups, Citizen action groups and community working groups help residents or visitors address their needs during their stay. Short-term residents can provide feedback on the four possibility spaces.
- 4** Long-term residents and people who are actively involved in the development of these communities can apply to join the centers of strategic strength in these communities to help them build better systems.