



SHOP OWNER
(Truck shop)

- The job location is 5 minutes away from home
- There are no so many independent shops around, no competition
- There are **no green spaces**
- **Too much concrete material** used
- **No space for walking with dogs**



DOG & CAFE BARISTA
(Barkney wick cafe)

- It is affordable to buy a home with the help of the government
- It is a quiet place
- The area provides spaces for people who work in creative industries



BRAND MANAGER
(Broken planet)

- There are many creative people
- It is quiet
- There is no traffic jams
- Just a few shops
- It is a problem with car parking
- **Not so many activities**



ARCHITECT
(Planstudio architecture)

- There are many artists that are part of the community
- The job location is not far away from home
- Just **a few shops**
- **No green spaces**



Meeting points
with interviewers



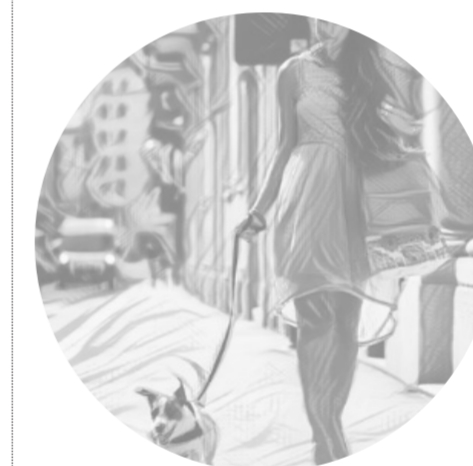
UNIVERSITY LECTURER
(Teaching philosophy)

- It is affordable to buy a home with the help of the government
- It is a quiet place
- The area provides spaces for people who work in creative industries



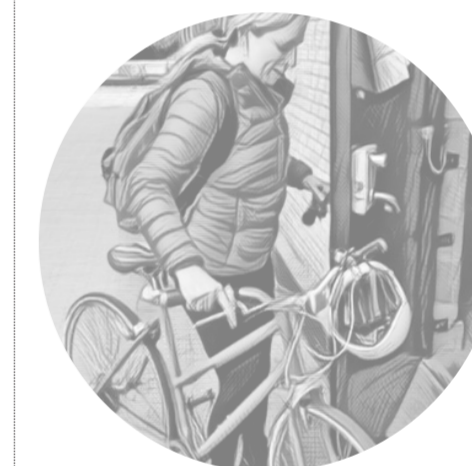
GROUP OF FAMILIES
(Women & children)

- Just a few shops
- There are **no parks**
- The school is located far away from the community
- Too many dogs on the road



RESIDENT
(Dog owner)

- There are young people that live around
- Just a few shops
- There are **no green spaces** for going out with a dog
- The nearest public transport is only the Underground
- **Anti-social behaviour**



RESIDENT
(Cyclist)

- The prices in the shops are affordable
- Just **a few shops**
- Just a few restaurants for going out, missing of a food diversity
- **Missing activities** for kids